

NBER WORKING PAPER SERIES

HELL WITH THE LID OFF:
RACIAL SEGREGATION AND ENVIRONMENTAL EQUITY
IN AMERICA'S MOST POLLUTED CITY

H. Spencer Banzhaf
William Mathews
Randall Walsh

Working Paper 32950
<http://www.nber.org/papers/w32950>

NATIONAL BUREAU OF ECONOMIC RESEARCH
1050 Massachusetts Avenue
Cambridge, MA 02138
September 2024

This work was supported by a grant from the Washington Center for Equitable Growth: "The Long-Term Evolution of Inequality: Poverty, Pollution, and Human Capital" The views expressed herein are those of the authors and do not necessarily reflect the views of the National Bureau of Economic Research.

NBER working papers are circulated for discussion and comment purposes. They have not been peer-reviewed or been subject to the review by the NBER Board of Directors that accompanies official NBER publications.

© 2024 by H. Spencer Banzhaf, William Mathews, and Randall Walsh. All rights reserved. Short sections of text, not to exceed two paragraphs, may be quoted without explicit permission provided that full credit, including © notice, is given to the source.

Hell with the Lid Off: Racial Segregation and Environmental Equity in America's Most Polluted City

H. Spencer Banzhaf, William Mathews, and Randall Walsh

NBER Working Paper No. 32950

September 2024

JEL No. H44, I15, N30, N92, Q53, R2

ABSTRACT

This study examines the relationship between racial segregation and environmental equity in Pittsburgh from 1910 to 1940. Utilizing newly digitized historical data on the spatial distribution of air pollution in what was likely America's most polluted city, we analyze how racial disparities in exposure to air pollution evolved during this period of heightening segregation. Our findings reveal that black residents experienced significantly higher levels of pollution compared to their white counterparts, and this disparity increased over time. We identify within-city moves as a critical factor exacerbating this inequity, with black movers facing increased pollution exposure. We also provide evidence of the capitalization of air pollution into housing markets. Taken as a whole, our results underscore the importance of considering environmental factors in discussions of racial and economic inequalities.

H. Spencer Banzhaf
North Carolina State University
Nelson Hall
Campus Box 8109
2801 Founders Drive
Raleigh, NC 27695
and NBER
spencer_banzhaf@ncsu.edu

Randall Walsh
Department of Economics
University of Pittsburgh
4901 WW Posvar Hall
230 S. Bouquet St.
Pittsburgh, PA 15260
and NBER
walshr@pitt.edu

William Mathews
University of Pittsburgh
WIM31@pitt.edu

The entire space lying between the hills was filled with blackest smoke, from out of which the hidden chimneys sent forth tongues of flame, while from the depths of the abyss came up the noise of hundreds of steam-hammers It is an unprofitable business, view-hunting; but if any one would enjoy a spectacle as striking as Niagara, he may do so by simply walking up a long hill to Cliff Street in Pittsburg, and looking over into hell with the lid taken off.

—James Parton, *Atlantic Monthly* (June, 1868)

1 Introduction

The initial wave of the Great Migration, 1910-1940, provided many Southern black migrants with new economic opportunities in Northern industrial centers. However, after their arrival, they faced a new set of challenges, including growing levels of racial segregation with attending inequities in housing, education, and employment (Akbar, Hickly, Shertzer, & Walsh, 2023; Bondy & Sager, 2020; Collins & Margo, 2006, 2011; Derenoncourt, Kim, Kuhn, & Schularick, 2022; Fishback, LaVoice, Shertzer, & Walsh, 2023; Massey & Denton, 1993). Given the well-documented evidence from the environmental justice literature that, today, blacks are segregated into higher-pollution areas (Banzhaf, Ma, & Timmins, 2019), it seems plausible that, as early as the Great Migration, black migrants would have been ushered into more polluted areas from the outset. Yet, to the best of our knowledge, this question has not previously been explored, probably because of the empirical challenge of needing measures of pollution from 100 years ago.

In this paper, we overcome this challenge with new archival data on the spatial distribution of air pollution in Pittsburgh between 1910 and 1939. Pittsburgh in that era was almost certainly the most polluted city in the United States and arguably one of the most polluted cities the world has ever known. To combat the evils described in the epigraph, as of 1910 the city’s Progressive-Era reformers began systematically collecting falling soot and ash in glass-lined cans at set locations and weighing the contents monthly. Leveraging these newly discovered data along with micro-level census data on individuals’ locations, we study how racial disparities in exposure to air pollution evolved between 1910 and 1940—the period of maximally increasing racial segregation in Pittsburgh. One mechanism for such disparities could be the differential sorting of

poorer blacks into more polluted areas, if they were unable to outbid richer whites for the more desirable areas (Banzhaf et al., 2019; Banzhaf & Walsh, 2008). To test for such sorting, we also obtained US Census data on housing values to see whether they are systematically lower in more polluted areas.

Exposure to air pollution would have been more than just a disamenity. A large literature documents the link between pollution exposure and a range of negative outcomes in areas including health (e.g. Currie, Graff Zivin, Mullins, & Neidell, 2014; Deryugina, Heutel, Miller, Molitor, & Reif, 2019; Schlenker & Walker, 2016), cognitive function and mental wellbeing (e.g. Bishop, Ketcham, & Kuminov, in press; Kioumourtzoglou et al., 2017; Lavy, Ebenstein, & Roth, 2014), labor productivity (e.g. Borgschulte, Molitor, & Zou, 2022; Graff Zivin & Neidell, 2013; Hanna & Oliva, 2015)) and crime (e.g. Bondy & Sager, 2020; Burkhardt et al., 2019). In an era after the introduction of modern-scale coke and steel production but before modern abatement technology, these effects would likely have been all the greater. Indeed, the city's reformers were well aware of the health and other damages caused by smoke, which motivated their study (Banzhaf & Walsh, 2024). Confirming their intuition, recent studies of the UK have found large health effects from historical exposure to industrial smog (Beach & Hanlon, 2018; Hanlon, 2024). Moreover, air pollution can have long-lasting and even inter-generational impacts, both directly and indirectly through human capital (Almond, Currie, & Duque, 2018; Colmer & Voorheis, 2020; Isen, Rossin-Slater, & Walker, 2017). Thus, historical pollution disparities could have contributed to seeding a vicious cycle of disparities in human capital, health, and exposure.

Our work triangulates on three literatures connected to environmental quality: the economic history of industrial pollution, household sorting by pollution levels, and within-city environmental disparities. Within this space, our work is closest to Heblich, Trew, and Zylberberg (2021). Taking a "macro approach," they reconstruct historic air quality in 142 English cities around the turn of the 19th century, using data on the location of industrial chimneys and an atmospheric dispersion model. They then document the correlation between parish-level air pollution and the share of low-skill workers. Importantly, they find evidence that low-skill workers lived in more polluted areas, that those spatial patterns were not present in the pre-industrial era, but that they continue to persist today.

In contrast, by focusing on the United States at the time of the Great Migration, we

examine a very different socio-economic setting, one with many first-generational European immigrants as well as black migrants from the rural South, and accordingly where racial segregation is particularly salient. Additionally, we take a “micro approach,” focusing on a single U.S. city (Pittsburgh). This focus on Pittsburgh allows us to use the unique measures of sootfall gathered between 1910 and 1939.¹ We link these measures of actual pollution to micro-level data from the full-count decadal Censuses. Thus, we are able to assess the relationship between a much richer set of demographics and pollution exposure. Moreover, we have housing prices from the Census data for 1930-40 and, for a subsample, a panel of individuals observed over time from the Census Linking Project (Abramitzky, Boustan, Eriksson, Pérez, & Myera, 2020). Because they track individual movements, these data enable us to test for patterns of mobility and market impacts from sorting.

We find that, as early as 1910, correlations between pollution, income, race and nativity had been established in a manner that likely reinforced societal inequities. Notably, we find race and nativity to be markedly more important than income for predicting pollution exposure. Furthermore, racial inequity in exposure to air pollution increased significantly between 1910 and 1940, while inequity by nativity declined. By 1940, on average, black Pittsburghers were exposed to over a one-half standard deviation more pollution than were their white counterparts of similar income, age, and marital status. We estimate this black-white disparity in air pollution to be roughly six times as large as that associated with a one standard deviation difference in income.

In contrast to twenty-first century reductions in disparities, which appear to be driven by patterns in pollution mitigation (Currie, Walker, & Voorheis, 2023), these earlier increases in disparities appear to be based on blacks “coming to the nuisance” rather than pollution coming to them. In particular, from 1910 to 1940, we find blacks moving to areas that were already polluted by 1910. Additionally, in micro data of within-city moves, we find them systematically moving to more polluted areas. In contrast, native-born whites’ movement patterns were associated with decreasing pollution. Foreign-born residents were also associated with decreasing pollution, at about the same rate as native

¹To the best of our knowledge, comparable air pollution data does not exist for any other U.S. city from this time period. The archived correspondence between the Pittsburgh researchers and activists in other cities indicates that Pittsburgh was pioneering a new endeavor. Following Pittsburgh’s lead, Cincinnati collected sootfall at 19 sites between 1930 and 1940, but we have been unable to locate records of these data. Earlier, St. Louis also attempted a similar study, but the data proved unusable and the project was abandoned.

born whites or faster. Thus, by the end of the period, a stark difference in black-white exposure emerged.

Consistent with this sorting mechanism, we also find impacts of air pollution in Pittsburgh's housing market. For 1930-1940, a one Standard Deviation increase in air pollution was associated with a 5 to 6 percent reduction in housing price/rent. Nevertheless, housing prices cannot explain the racial patterns that we observe, as black-white disparities remain even after conditioning on prices.

2 Context

On the eve of World War I, Pittsburgh was the United States' 8th largest city and ranked 9th in GDP. It especially excelled in the production of iron and steel and, as an intermediate process, the production of coke. Accordingly, it also led in the consumption of pollution-generating fossil fuels. It was second only to Chicago in annual consumption of bituminous coal (3.8 million tons vs. 5.3 million tons) and coke (1.4 million tons vs. 2.0 million tons) and led the country in annual consumption of coal gas at 16.7 billion cubic feet.² Although it consumed 30% less coal than Chicago, it was a mere 1/4 of the city's size in terms of both land area and population, making its emissions much more dense.

Pittsburgh's unique geography only added fuel to the fire. It sits at the confluence of the Allegheny and Monongahela Rivers, where they form the Ohio River. To access coal and metals by barge, Pittsburgh's industries were nestled into these river valleys. Residential areas, in contrast, were on the sides and top of steep hills rising up from the rivers. This geography has a two-fold significance for our study. First, it implies pollution patterns were exogenous to downwind demographics. That is, polluters located where they were because of where the river valleys were, not because of who lived downwind, while residents could sort in response, with richer or more privileged groups obtaining access to the cleaner high-elevation areas. Second, temperature inversions would often trap coal smoke for days at a time in the valleys. Combined with its dense emissions of smoke, these conditions created what was, at this time, almost certainly the United State's most polluted city—hence, James Parton's epigraph for Pittsburgh, "Hell

²Production and consumption figures come from the 1914 Census of Manufacturers ([U.S. Department of Commerce, 1917](#)).

with the lid taken off.”

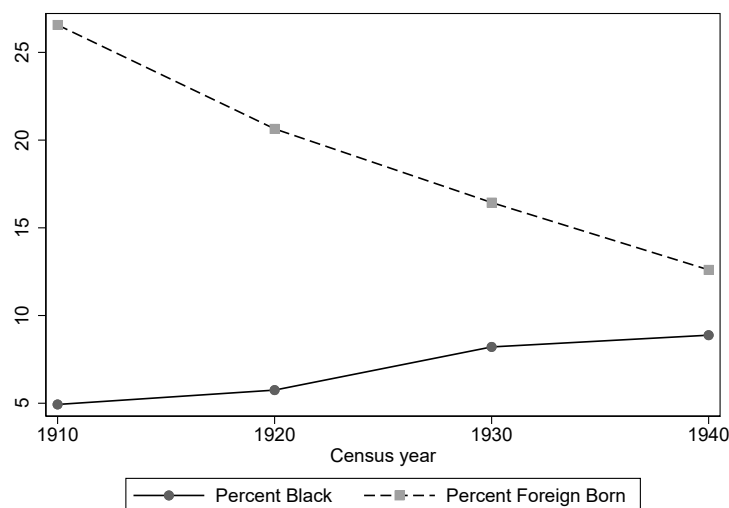
Pittsburgh’s smoke investigators, led by John O’Connor Jr., an economist, were trying to address this problem. They researched abatement technologies and lobbied for reforms. They also tried to document the extent of the problem. While collecting the sootfall data, they researched smoke’s damages, estimating concentration-response functions for various injuries and resulting monetary losses, in what was essentially an early integrated assessment model (O’Connor, 1913). They estimated damages from higher laundry bills from the soot, higher cleaning costs, damaged textiles and merchandise, and so forth. Importantly, they were convinced that the smoke problem was common knowledge to Pittsburghers. The effects were “axiomatic” or “nobody would deny” them, they would write. They also observed that people were intentionally adapting to the problem. For example, Pittsburgh was known as “the mourning town” because the men wore dark suits to avoid showing dirt. Women replaced woolens with more washable fabrics, and people used washable paints for their homes and were less likely to use wallpaper. Because they were like a “tax” that one had to pay to live in Pittsburgh, said the investigators, these nuisances kept some people away, driving up wages and putting the city at a competitive disadvantage (O’Connor, 1913).³

Moreover, according to O’Connor, people were well aware of which neighborhoods were dirtier than others, so housing demand and, hence, prices were lower in the dirtier neighborhoods. He based this conclusion on the fact that Philadelphia tax assessors decreased their assessments in the two dirtiest wards of that city, on court decisions awarding damages to injured property, and the expert opinion of Pittsburgh’s real estate firms, which would sometimes advertise property as free from smoke (O’Connor, 1913).⁴ People also understood that poorer and disadvantaged people lived in the dirtiest neighborhoods. In 1941, when Pittsburgh’s city council finally passed binding rules to reduce its smoke problem, largely by targeting home heating technologies, they wondered whether it would buy them or cost them votes in poorer neighborhoods, as the air quality improvements would come to the poor neighborhoods but the costs of the clean fuels would be regressive (Tarr & Lamperes, 1981). In summary, the contemporary wisdom was that people were sorting in response to pollution.

³For a broader discussion of the sootfall studies and estimates of damages, see [Banzhaf and Walsh \(2024\)](#).

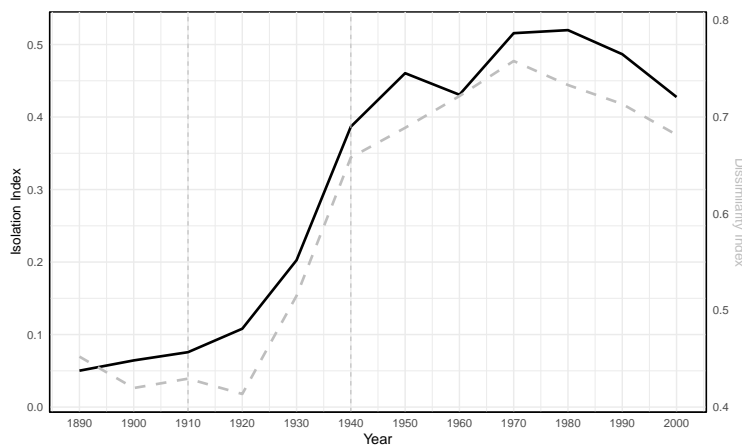
⁴Intriguingly, earlier the prestigious economist John R. Commons had proposed a survey of quality-adjusted housing costs in Pittsburgh’s different neighborhoods. He submitted smoke as one factor to consider in the quality adjustments ([Commons, 1908](#)).

Figure 1: Demographic Trends in Pittsburgh, 1910-1940



Note: This figure shows the evolution of demographic groups in Pittsburgh. The solid black line is the share of the black population and the dashed line is the share of foreign-born.

Figure 2: The Rise of Racial Segregation in Pittsburgh



Note: This graph shows the rapid increase in Pittsburgh's racial segregation between 1910 and 1940, using two measures of segregation. The solid black line is the Isolation Index and the dashed gray line is the Dissimilarity Index. (See [Shertzer, Walsh, and Logan \(2016\)](#) for a discussion of the underlying data.)

Meanwhile, like virtually every other large Northern city in the United States over the 30 years that we study, Pittsburgh experienced significant demographic change. Its population grew by over 25% between 1910 and 1940, from 533 thousand to 672 thousand. At the beginning of this period, its population was only 5% black but 27% foreign-born. Comprising the largest disadvantaged group at this time, many of these immigrants were from Eastern Europe and many did not speak English. However, over time these

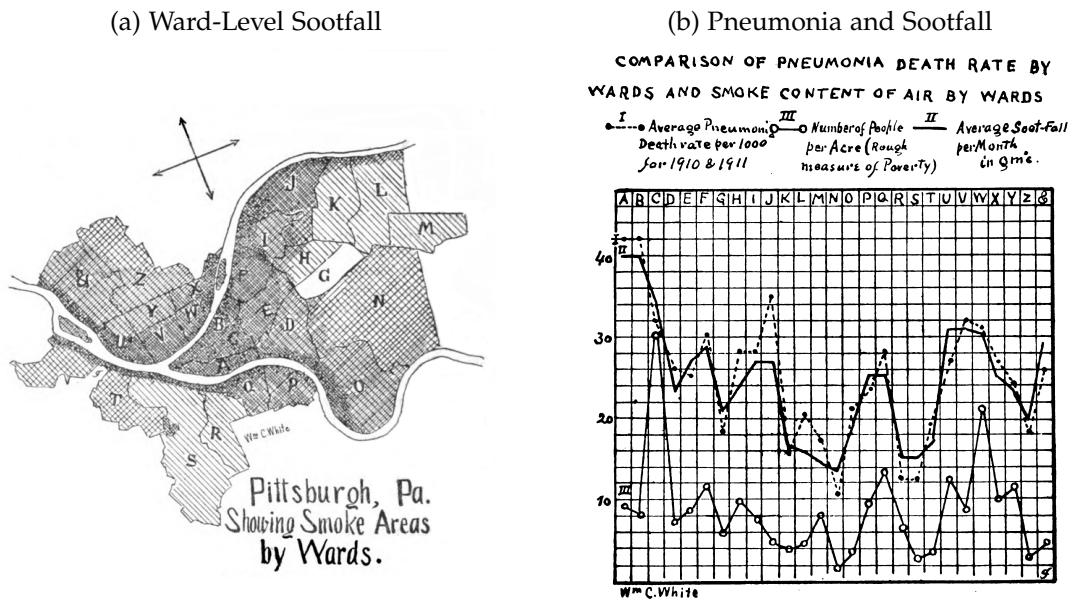
population shares converged, as European migrants assimilated and more blacks moved from the South (see Figure 1). This convergence was the result of two factors. First, during the first wave of the Great Migration, Pittsburgh's black population more than doubled, increasing from 26 thousand to 62 thousand. From 1910 to 1940, the share of blacks increased from 5% to 9%. As was typical of other other large Northern and Mid-western U.S. cities over this period, these increased rates of black migration were met with accelerating waves of white flight (see [Shertzer & Walsh, 2019](#), for a discussion). As a result, and consistent with the experience of other U.S. cities, 1910 to 1940 marked the period of maximal segregation growth for Pittsburgh. Figure 2 shows two measures of segregation over time, the isolation index and the dissimilarity index. The isolation index measures the percent black in the neighborhood of the average black resident. The dissimilarity index measures the share of the black (or white) population that would need to relocate in order for both races to be evenly distributed across a city. As shown in the figure, both measures rapidly increased from 1910-40.

Second, among whites, patterns of nationality were also changing over this time period. European immigration to the U.S. slowed drastically during World War I. Then, after a brief uptick following the war, it slowed again as a result of federal restrictions on immigration flows under the quota acts of 1921 and 1924 ([Abramitzky & Boustan, 2017](#)). Consequently, Pittsburgh's foreign-born population declined sharply over this time period, from 141 thousand in 1910 to 85 thousand in 1940. As a percent of the population, levels fell by half from 27 percent to 13 percent. Further, not only were their numbers greatly reduced, but this smaller group of foreign-born Pittsburghers would have, on average, been in the country for a longer period of time. This last point is important because, as we will show below, assimilation (speaking English) was associated with significantly reduced inequity in pollution exposure for foreign-born Pittsburghers.

3 Data

We utilize data from a several sources. Air pollution data come primarily from a novel set of "Sootfall" measurements that were collected over several decades in the city of Pittsburgh. The main sources of demographic and income data are the full-count U.S. Decennial Censuses, which we augment with data on the incomes of county employees

Figure 3: Early Sootfall Measurement in Pittsburgh



Note: Figures reproduced from: White, Charles William and C.H. Marcy, "A Study of The influences of Varying Densities of City Smoke on The Mortality From Pneumonia and Tuberculosis" in Transactions of the Fifteenth International Congress on Hygiene and Demography (1912)

taken from annual reports of the Allegheny County Controller’s Office. We also take advantage of the Census Linking Project (Abramitzky et al., 2020) to track individuals across census waves. Finally, for our hedonic analysis, we match house characteristics from current day Assessor’s records to self-reported house values and rents from the 1930 and 1940 Censuses.

3.1 Sootfall Data

Our primary measure of air pollution comes from the series of “smoke studies” introduced above. These studies were conducted by collecting ash-fall in glass-lined metal cans placed on rooftops throughout the city. The contents were weighed monthly with the results recorded in tons of soot per square mile per month.

The first study, published by White and Marcy (1912), was conducted in 1910 at the University of Pittsburgh with funding from Richard K. Mellon. The researchers collected one year’s worth of spatially delineated sootfall data during the year and re-

Table 1: Sootfall Studies

Study Sponsor/ Author	Years	Months	No. Sites	Mean (SD)
White & Marcy (1912)	1910	Annual Avg	26 Wards	69.6 (20.9)
Mellon Institute	1912-13	12	12	89.7 (42.3)
Mellon Institute	1923-24	11	12	118.6 (51.5)
Mellon Institute	1929-30	12	19	80.8 (41.3)
Works Progress Administration	1938-39	12	100	94.6 (75.9)

Note: This table summarizes the sootfall data available, including the researchers, time period studied, and number of sites. (The 1910 study reported ward-level averages rather than sites.) The table also shows the mean and standard deviation of sootfall measured in tons / mi² / mo.

ported annual averages for each of Pittsburgh’s 26 Wards. Figure 3 reproduces two key figures from their report. Panel A records the spatial distribution of sootfall in the city (with darker shading corresponding to higher levels of sootfall). Panel B reports measured sootfall levels along with Ward-Level data on pneumonia death rates and population density. This second panel highlights one main motivation for the sootfall studies, namely to assess the link between smoke and mortality.

The remaining studies reported monthly data at discrete locations. These include studies in 1912-13, 1923-24, and 1929-30 by the Mellon Institute of Research.⁵ Finally, the City of Pittsburgh’s Bureau of Smoke Regulation (part of the Department of Public Health) undertook a large scale sootfall study during the years 1938 - 1939 with support from the Works Progress Administration.

Table 1 reports the duration, scope, and organization responsible for each soot study in our data-set. For our analysis, we digitized each of these studies. Table 1 also displays the mean and standard deviation of pollution across sites within each study. Based on these raw data, in 1910 the average soot-fall in Pittsburgh was 69.6 tons per square mile per month (or 0.29 kg/m²/year), a figure which grew to 118.6 t/mi²/mo (0.50 kg/m²/yr) in 1923/1924 before falling again in future years. Furthermore, there is substantial geographic variation within each time period, with coefficients of variation ranging from 0.3 to 0.8 (see also Figure 3).

For perspective, we have calibrated these figures to modern measures of total suspended particulate pollution (TSP), using later data when modern monitors operated

⁵The Mellon institute of Research was part of the University of Pittsburgh from its inception in 1913 until 1928 when it became a not-for-profit independent research institute. It became part of Carnegie Mellon University in 1967. Data from the Mellon Institute Studies as well as the 1938 Study undertaken by Pittsburgh’s Bureau of Smoke Regulation are located in the Archives of the University of Pittsburgh (Ref# US-PPiU-ais198307).

Table 2: Regressing Sootfall on Heavy Smoke Days

	City-Wide Soot Average	Downtown Soot
Heavy Days	-0.734 (4.092)	16.47*** (5.092)
Constant	110.4*** (26.32)	123.5*** (32.21)
N	40	39
R^2	0.071	0.432
adj. R^2	-0.342	0.169

Standard errors in parentheses

* $p < 0.1$, ** $p < 0.05$, *** $p < 0.01$

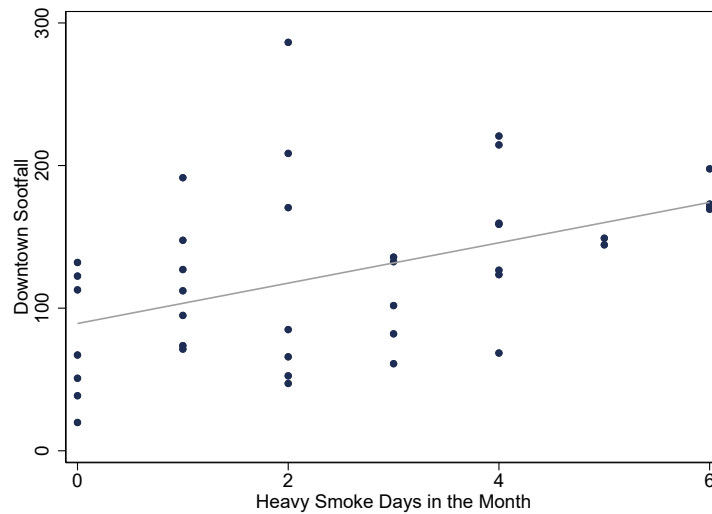
This table shows results from a regression of sootfall data on the Weather Bureau’s estimate of the number of smoky days in each month. The model includes month fixed effects and drops one extreme outlier (November, 1929).

close in time to later soot-fall studies. Based on that calibration, Pittsburgh’s air in the first quarter of the 20th century had TSP levels on the order of 300 to 500 $\mu\text{g}/\text{m}^3$, vs. roughly 30 today. These levels are much higher than 21st C. Beijing and comparable to those in London during the same period, but they are likely not as high as London at 1900, when TSP levels are estimated to have been closer to 600 $\mu\text{g}/\text{m}^3$ (Brimblecombe, 1987; Fouquet, 2011; Lam et al., 2019).

As a check on the signal provided by these data, we can compare them to time series data recorded in the U.S. Weather Bureau’s meteorological reports for downtown Pittsburgh from 1905 to 1935. Observers reported daily whether they detected light or heavy smoke from their meteorological station in downtown Pittsburgh.⁶ We aggregate these observations to the monthly level to compare them to the sootfall data. There are 41 months in which air pollution is measured by both the Mellon Institute soot studies and the U.S. Weather Bureau’s daily reports for downtown Pittsburgh. To gauge whether the sootfall data comports with the Weather Bureau’s reports, we regress monthly sootfall data on the number of heavy smoke days reported at the Pittsburgh Meteorological Station. Table 2 reports the results. In the first column, the dependent variable is the city-wide average across all sootfall stations, while in the second column we only use data from the downtown monitoring site closest to the Meteorological Station. Although we

⁶These data are taken from “United States Weather Bureau Report of the Chief.” These annual reports are available through the Carnegie Library of Pittsburgh’s Archives. Beginning in 1935, the Pittsburgh Meteorological Station moved from downtown Pittsburgh to the airport in Moon Township, outside our study area. Accordingly, we limit our smoke days comparisons to pre-1935 months with sootfall data.

Figure 4: Downtown Sootfall and Heavy Smoke Days



The figure illustrates the regression line from Table 2, Col. 2.

find no statistically significant relationship between city-wide soot averages and reports of heavy smoke downtown, we do find a very strong statistical relationship between downtown sootfall and observed smoke downtown. Here, one extra heavy smoke day is associated with an increase in sootfall rate equal to 16.47 tons per square mile per month. Moreover, the meteorological data explain 43% of the variation in the sootfall data. Figure 4 provides a scatter plot of the data underlying the regression in column 2 of Table 2. These results are consistent with the idea that sootfall measures and observed smoke are both measuring local pollution, but that there is substantial geographic variation in both, which is ignored by taking the city-wide average. We conclude that these historical sootfall data are meaningful.

3.2 Demographic Data

We merge these pollution data to demographic data from three sources, the full-count U.S. Censuses for the years 1910, 1920, 1930 and 1940; a panel of individuals linked across Census years; and income data for public employees of Allegheny County.

3.2.1 Full-Count US Census

We obtained full-count US Census demographic data from IPUMS (Ruggles et al., 2020) for all Pittsburgh residents between the years 1910 through 1940. For each year, we use the smallest possible (digitized) census geography. Specifically, for 1910-1930 we use enumeration district shapefiles originally digitized by Shertzer et al. (2016). For 1940, we use Census Tract shapefiles downloaded from the National Historical Geographic Information System. Enumeration districts designate the area that a single census enumerator could survey in a two week period, typically a handful of city blocks. On average, Pittsburgh's enumeration districts spanned 0.11 square miles and contained 1,424 residents in 1910, 0.09 square miles and 1,319 residents in 1920, and 0.1 square miles and 1,340 residents in 1930. Constituting a higher level of aggregation, Pittsburgh's Census Tracts in the 1940 Census spanned 0.29 sq miles and held 3,010 residents on average.

These IPUMS data include micro-level information about every individual in Pittsburgh. For each individual, we obtain information on race, nativity, English speaking, age, sex, home ownership, labor force participation, occupation, marital status, and relationship to head of household. For 1930 and 1940, we also obtain tenure and self-reported rent or home value, as well as income (these data were not available earlier). Because the Census doesn't report income prior to 1940, for 1910-30 we proxy for income using Occupational Income Scores. These scores have been in widespread use for thirty years. They are based on analysis of income, occupation and industry data from the 1950 census and backcast by Ruggles et al. (2020). Each point in the Occupational Income Score represents \$100 in 1950 income. Our primary estimation sample takes only household heads (male or female) as the unit of observation. These heads can be male or female, but approximately 80-85% of household heads are male during this period. However, as discussed later, our results are not sensitive to alternative sample definitions.

Approximately 108,000 to 150,000 individual household heads are included in our sample, depending on year. Summary statistics for this sample are presented in Appendix Table A.1. The table provides means and standard deviations for each variable, separately for each Census year. It confirms the patterns seen in Figure 1, including the rise in the black population over time and decline in foreign-born population.

3.2.2 Census Linking

We also utilize the Census Linking Project ([Abramitzky et al., 2020](#)) to generate linked samples of men across the 1910 and 1940 Censuses and also across the 1930 and 1940 Censuses. Following the project’s methodology, we link individuals based on their phonetically standardized name, birthplace, birth year, and race. For these linked samples, we start with the universe of men living in Pittsburgh who appear in the 1940 Census and then link backwards to the 1910 and 1930 Censuses respectively. Because the linking process relies on individuals’ full names, we are only able to link men, as women typically adopted their husband’s surname upon marriage.

We link 30,865 men between 1910 and 1940 and 66,772 men between 1930 and 1940. Because we are primarily concerned with how within-city moves contributed to patterns of pollution exposure, we further limit the samples to those men who report living in Pittsburgh for both Censuses. This further filtering leaves 13,232 men linked from 1910 to 1940 and 44,755 men linked from 1930 to 1940. Appendix Table [A.2](#) provides summary statistics for linked men in 1940, as well as the unlinked men for comparison. As seen in the table, the linked sample tends to skew somewhat toward whites and higher Occupational Income Scores.

3.2.3 Allegheny County Employee Data

As noted previously, the US Census did not begin collecting data on income until 1940, so we primarily rely on Occupational Income Scores. Although widely used in the economic history literature, Occupational Income Score is admittedly a noisy measure of income. To augment these measures and assess their validity, we also digitized data on the incomes of employees of Allegheny County (where Pittsburgh is located) taken from the 1910, 1920 and 1926 reports of the Allegheny County Controller.⁷ For the 1910 and 1920 reports, we hand-matched the individuals to Census records using their names and occupations. For 1910 (1920) we were able to uniquely match 226 (437) of the 751 (1,252) individuals included in the report to individuals in the Census living inside the City of Pittsburgh. We limit attention to individuals living inside the city because all of the sootfall stations are located within the city boundary. For these two years, we recover each individual’s residential location (Enumeration District), race, and nativity

⁷1926 was the last year for which individual salaries are reported in these reports. It is also unique in that it is the only report we could find that actually listed each individual’s address.

from their Census records. We also recover Occupational Income Score for 224 (235) of these County employees.

The 1926 reports are between Census years, so we do not attempt to match to Census records. Thus, although we have income from the employment records, we do not know other demographic information for these individuals (e.g., race and nativity). However, in this case we have actual addresses. Thus, we can still link them to our pollution measures. We successfully geocode the addresses for 1,381 of these 2,530 individuals.

Appendix Table [A.3](#) presents summary statistics for matched county employees. These data can be used as an alternative estimation sample for understanding the exposure of different demographic groups to pollution, a sample that contains actual incomes rather than Occupational Income Scores.

The 1910 and 1920 data can also be used to assess the validity of using Occupational Income Scores as a proxy for income in our other samples. We gauge this validity in the following way. First, using the Bureau of Labor Statistics CPI series, we convert the 1910 and 1920 incomes to 1950 dollars. Then, separately for 1910 and 1920, we regress each individual's actual income (as reported by the County) on their Occupational Income Score (based on the occupations reported in the IPUMS version of the Decennial Census). If (i) relative wages across incomes and occupations remained unchanged between 1910/1920 and 1950; (ii) County employees are paid market wages; and (iii) the CPI adjustments to 1950 dollars are perfect, then the estimated coefficients in this regression should equal exactly 100. Here, condition (i) is essentially the hypothesis to be tested and conditions (ii) and (iii) are conditions under which the test is valid. Table [3](#) presents the regression results. The coefficients estimates are 107.6 and 60.12 for 1910 and 1920, respectively. For both decades the estimates have a high degree of statistical significance. Taken together, these estimates suggest that Occupational Income Scores are likely to be a good proxy for income in our pollution analysis.

3.3 Housing Characteristics

Beginning in 1930, the Decennial Census collected data on self-reported housing values and rents. These values can be regressed on pollution to test whether sorting processes are leading to lower housing values in more polluted areas. To control for housing characteristics in this regression, we match the household heads' addresses from the 1930

Table 3: Regressing Income on Occupation Scores

	1910 Income	1920 Income
Occ Income Score	107.6*** (16.44)	60.12*** (6.990)
Constant	685.3 (455.1)	679.1*** (207.2)
<i>N</i>	224	235
<i>R</i> ²	0.162	0.241
adj. <i>R</i> ²	0.158	0.238

Standard errors in parentheses

* $p < 0.10$, ** $p < 0.05$, *** $p < 0.01$

This table shows results from a regression of income on occupational scores. Nominal incomes are converted to 1950 Dollars using the Bureau of Labor Statistics' CPI Series. If county employees are representative and CPI adjustments are accurate, a coefficient on Occupational Income Score close to 100 indicates a good proxy.

and 1940 censuses to the 2022 Allegheny County Assessor's roles. These data have information about the housing characteristics as of 2022. In this process, we conservatively restrict the sample to single family homes that were built before 1930/1940. This insures that we do not have any teardowns and rebuilds between the 1930-40 Census data and the observed house in 2022. Again conservatively, we also restrict the sample to addresses with a single head of household. From both sides of the match, we begin by standardizing the addresses for how type of road (i.e. street, avenue, road, etc.), numbered streets (i.e. 1st avenue) and cardinal directions are delineated. We then limit the matched sample to only those matches where the street name match was completely unambiguous. Next, we drop any match whose location as identified in the Assessor's data set lies outside its reported Enumeration District (1930) or Census Tract (1940). This step provides an evaluation of the quality of our matching procedure. For 1930, only about 4% of our matches fail this filter. For 1940, the failure rate is just under 10%. As a last step, we drop observations that have incomplete assessor's data. Statistics for the matching process are presented in Appendix Table A.4.

As shown in Appendix Table A.1, 40% of our sample are home owners in 1930, a share which falls during the Great Depression to 32% in 1940. Consistent with that trend, our final sample comprises 12,635 owner-occupied homes in 1930 and 11,345 in 1940. However, despite the fact that a majority of residents are renters, because we focus on single-family houses with observable characteristics our sample of rents is smaller, at 3773 in 1930 and 6296 in 1940.

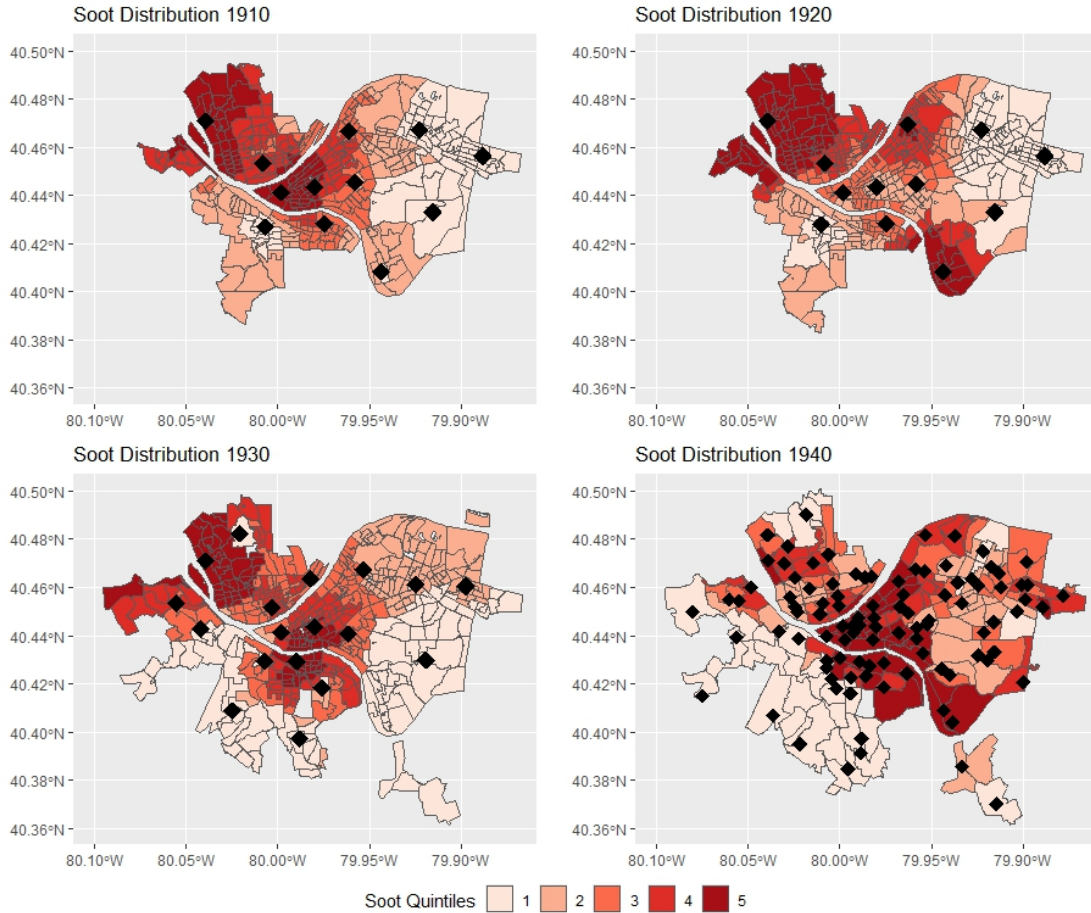
Potentially, one might be concerned about bias or measurement error in self-reported house values. However, to test this issue, [Akbar et al. \(2023\)](#) hand-matched a subset of 1930 and 1940 census data to assessor records of contemporaneous transactions. They found that self-reported house values from the U.S. Census provide an unbiased estimate of actual sale prices for 1930 and 1940. Although measurement error might still be a concern, we note that, in the context of hedonic regressions, this would be measurement error in the dependent variable. Moreover, [Banzhaf and Farooque \(2013\)](#) have found that community-level price indices constructed from more recent self-reported valuation data are highly correlated with both price indices constructed from sales and with public goods and amenities. They also found that self-reported rents are even more accurate than self-reported values, as one might expect.

3.4 Matching Pollution to Census Data

To assign pollution data to census divisions (Enumeration Districts in 1910, 1920, and 1930 and Tracts in 1940), we follow a 3-step process. First, we collapse every station in each sootfall study to an annual average, dropping missing values. Next, limiting ourselves to pollution readings within five years of a census year, we take an inverse-distance-weighted average of the three closest stations' annual average to a census division's centroid. This step potentially leaves us with multiple pollution estimates for a census division. For example, in 1910 we have pollution estimates based on both the 1910 and 1912 soot studies. Therefore, we take an average of the different estimates for every census division. Finally, individuals are assigned to the pollution at the centroid of their division, with one exception for the 1926 county employee data where we assign pollution to the individual's known address.

In [Figure 5](#) we present the interpolated spatial distribution of sootfall and the location of the individual sootfall collection stations. The interpolated data is reported in terms of within-census-year quintiles. Overall, the spatial distribution of pollution is fairly stable, with pollution levels highest along and between the rivers and lower to the southwest and in the highest elevation areas to the east. However, there is one notable exception to the stability of the data: a relative decrease in pollution that occurred in Pittsburgh's Hill District (very center of the map, between the Allegheny and Monongahela Rivers) in the 1920 interpolation. At the time, the Hill District was the heart of the city's black community. This short-lived decrease came about because pollution in the Hill District

Figure 5: Spatial Distribution of Sootfall as Attached to Census Geography



Heatmap of pollution after attachment to census geographies. Each diamond shows the location of individual sootfall stations. For 1920, 1930 and 1940, the interpolations are based solely on the 1923/24, 1929/1930 and 1938/39 studies respectively. For 1910, we report the average of the Ward-Level data for 1910 and the interpolated station data for 1912/13. We report the within Census quintiles of sootfall. For 1910 - 1930, sootfall is interpolated to the Enumeration District Level. For 1940 it is at the Census Tract level.

didn't increase as rapidly between 1910 and 1923 as it did in other parts of the city. By 1930, this differential change was gone.

To further explore the stability of pollution over time and the patterns in 1920, Table 4 shows the spatial correlation of pollution from different years. The table is constructed by interpolating each year's sootfall data to the centroids of the 1920 enumeration districts and then computing the correlation coefficients. There is clear persistence in the spatial patterns, but 1920 also stands out as an exceptional year. For example, looking at the bottom row, the correlation of the 1940 and 1920 data is much lower than the correlation between 1940 and the other years.

Based on the spatial interpolations, Appendix Tables A.1, A.2, and A.3 show aver-

Table 4: Correlation in Enumeration District Sootfall Across Time

	Sootfall 1910	Sootfall 1920	Sootfall 1930	Sootfall 1940
Sootfall 1910	1			
Sootfall 1920	0.448	1		
Sootfall 1930	0.745	0.467	1	
Sootfall 1940	0.268	0.0301	0.258	1

Note: Correlation across years and Enumeration District for sootfall as attached to the 1920 geography.

Table 5: Average Sootfall Exposure by Year and Demographic Group

	Demographic Group		
	Black	Foreign Born	White
Year			
1910	85.0	86.3	80.0
1920	108.8	116.3	116.0
1930	91.5	86.5	82.9
1940	116.3	100.0	85.9

This table shows average sootfall in each year, after its assignment to Census geographies, as experienced by different groups. Note: White includes all non-foreign-born white individuals, foreign-born includes all non-black foreign-born individuals and black includes all black individuals.

age pollution levels as assigned to individuals in the full sample, linked sample, and county employee sample, respectively. Additionally, Table 5 shows the average pollution in each year for each of three demographic groups, blacks, foreign-born, and white. Consistent with the patterns observed in modern times, in 1910, 1930, and 1940, native-born whites have lower pollution exposure on average than either blacks or foreign-born whites. However, consistent with the anomaly seen in Figure 5 and Table 4, this pattern is actually reversed in 1920, when blacks have lower pollution exposure and foreign- and native-born whites have approximately the same exposure.

4 Empirical Analysis

4.1 County Employee Sample

We begin with an evaluation of the relationship between income, demographics and air pollution in our Allegheny County employee data. These data have small sample sizes relative to the census data. However, they have the advantage of having actual incomes (vs. Occupational Income Scores). Furthermore, by focusing on a set of individuals who all work for the same employer, we can make better “apples to apples” comparisons

Table 6: Regressing Pollution on County Employee Characteristics

	1910	1910	1910	1920	1920	1920	1926
Log Annual Income	-0.355*** (0.130)		-0.336** (0.132)	0.0190 (0.119)		-0.0126 (0.121)	-0.142** (0.0640)
Black		0.399 (0.357)	0.372 (0.370)		-0.383** (0.190)	-0.371* (0.200)	
Foreign Born		0.0711 (0.199)	0.108 (0.210)		0.0646 (0.142)	0.0790 (0.150)	
Constant	6.283*** (0.922)	3.821*** (0.0484)	6.116*** (0.937)	3.857*** (0.877)	4.027*** (0.0416)	4.104*** (0.894)	5.618*** (0.482)
N	226	463	226	437	659	437	1381
R^2	0.032	0.003	0.037	0.000	0.007	0.009	0.004
adj. R^2	0.028	-0.001	0.024	-0.002	0.004	0.002	0.003

Standard errors in parentheses

* $p < 0.10$, ** $p < 0.05$, *** $p < 0.01$

Note: Pollution levels are expressed in terms of within study standard deviations.

across people.

At its core, the goal of this analysis is to identify how pollution exposure varied as a function of demographics. We do so by estimating the simple linear model presented in Equation 1 using our matched samples of county employees.

$$\text{Std. Pollution}_i = \alpha + \beta \cdot \ln[\text{income}]_i + \gamma \cdot \text{Black}_i + \delta \cdot \text{Foreign Born}_i + \varepsilon_i \quad (1)$$

Here, Std. Pollution_i is the interpolated level of pollution either at the Enumeration District centroid where individual i lived (1910 and 1920 data) or at their exact address (1926 data). For each of our three time slices, pollution levels are normalized by the standard deviation of pollution across within-year observations. Income_i is individual i 's annual income (aggregated up for hourly employees based on 40 hours/week and 50 weeks per year). Black_i identifies black employees and Foreign Born_i is an indicator of being foreign-born. Because of the small sample sizes, we focus on a limited set of demographic variables in these county employee regressions.

Results from these regressions are presented in Table 6. Columns 1-3 use the 1910 data. Column 1 regresses pollution on income, column 2 on indicators for black and foreign-born, and column 3 on all three variables. Columns 4-6 repeat this exercise with the 1920 data. Column 7 uses the data from 1926, when only income is available.

Focusing first on 1910, the point estimates indicate that a ten percent increase in

income was associated with reduced levels of pollution exposure on the order of 0.35 standard deviations, an effect which is statistically significant. Comparing columns 1 and 3, we see that controlling for race and nativity does not affect this result. Looking at columns 2 and 3, the results indicate that on average blacks and foreign-born residents bore a greater pollution burden in 1910, but that the effect is not statistically significant. This lack of significance is, at least in part, driven by limited variation in our county samples.⁸ Skipping 1920 for the moment, in 1926 income remains associated with reduced levels of pollution, with a ten percent increase in income implying a 0.14 standard deviation drop in pollution exposures, again statistically significant at conventional levels. There are no estimates on these variables for 1926 because, as discussed above, we did not match these individuals to census data.

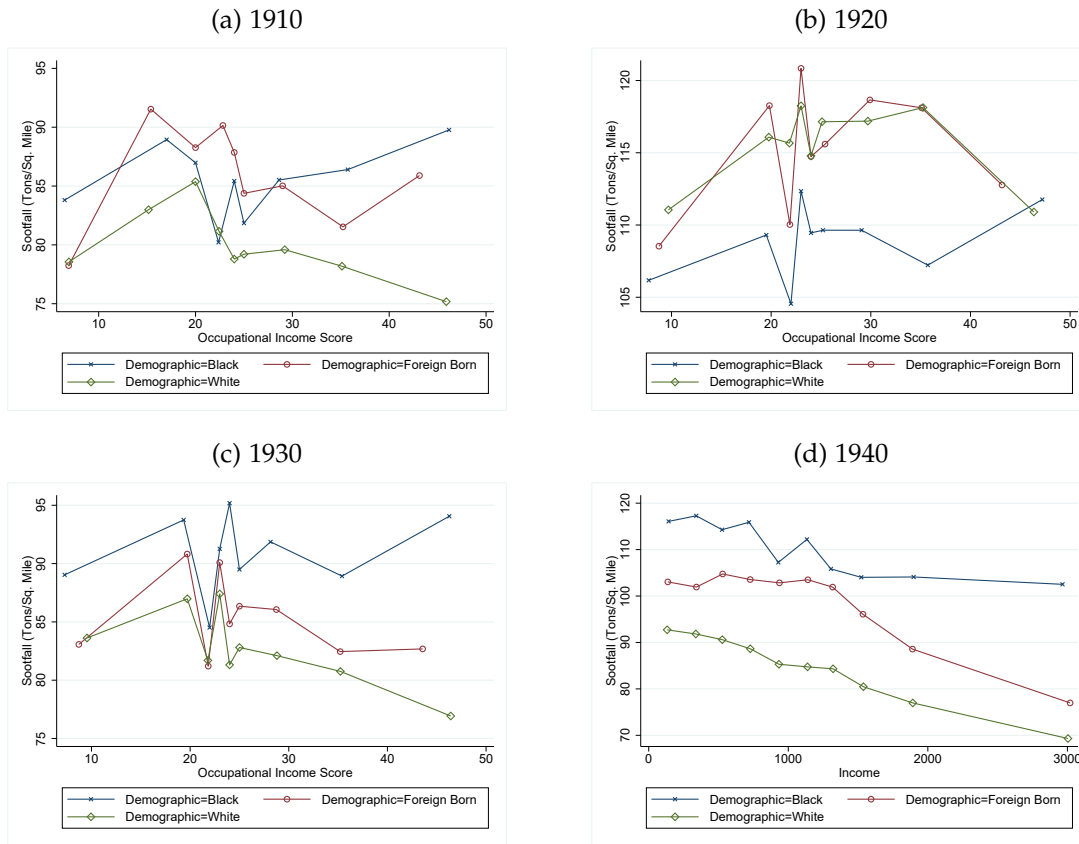
Turning to 1920 (columns 4-6) we see a different result. The estimated income effect is essentially zero and being black is now associated with lower levels of pollution exposure. As discussed previously, this result is an artifact of a temporary reversal in pollution distribution that occurred around 1920 and that temporarily moved Pittsburgh's largest black neighborhood from near the top of the pollution distribution to near the bottom. The 1920 anomaly aside, these results suggest that as early as 1910 the types of income-driven Environmental Justice (EJ) patterns that we see today were already established and could be identified even when examining the residential locations of individuals who all worked for the same employer.

4.2 Census Sample

We now turn to our main analysis based on data from the Decennial Census. Here, with a much larger sample, it becomes possible to consider a richer set of demographic characteristics and a broader range of years. However, it is now necessary to rely on Occupational Income Score as a proxy measure for income. For this analysis, we take as the unit of analysis household heads, as reported in the census. Thus, we are essentially combining outcomes for married couples (where the Census Bureau would have recorded the husband as the household head) with those for single men and women who

⁸The 1910 sample includes only 8 black employees and 27 foreign-born employees, while the 1920 sample includes 29 black employees and 54 foreign-born employees. Further, our analysis of city-wide census data (see below) finds that EJ results relative to being foreign-born are largely driven by individuals who do not speak English. Our county employee sample only includes one such foreign-born individual each in 1910 and in 1920.

Figure 6: Pollution vs. Income by Demographic Group (1910 thru 1940)



This figure reports binned means of sootfall exposure, by demographics (White, Foreign Born, Black) where the bins are constructed based on either Occupational Income Score (1910, 1920 and 1930) or income (1940). Bin boundaries were chosen to equate populations across bins. For comparison, Appendix Figure A.1 reports the 1940 results based on Occupational Income Score.

are not boarders, housed in group quarters, nor living in the home of an older relative. As discussed in Section 3.2.1, 79% to 85% of household heads are male, depending on the year. We also consider sensitivity analyses with alternative samples.

4.2.1 Patterns in the Raw Data

We begin by considering patterns in the raw data. As observed in Table 5, on average native-born whites were exposed to less pollution than black or foreign-born residents, except in 1920. To further explore these patterns and how they interact with income, we bin the data into deciles of the income distribution, then compute the average pollution experienced by each demographic group (native-born white, foreign-born, and black) in

each decile. Figure 6 displays the results. It shows that, again excepting 1920, native-born whites experience lower pollution than blacks or foreign-born—throughout the income distribution. In 1910 and 1930, whites also appear to be sorting by income, with a clear downward trend in their exposure, but this pattern does not appear to be present for other groups.⁹ This finding is consistent with the results for county employees presented in the previous sub-section, where we found exposure differences by income for that predominantly white sample. However, by 1940, we see a clear sorting pattern across demographic groups and across income within all three groups: at every decile of the income distribution, native-born whites have the lowest exposure, foreign-born higher, and blacks higher still. Moreover, within each group, exposure falls with income. These patterns suggest that the sorting process was a dynamic one that unfolded between 1910 and 1940.

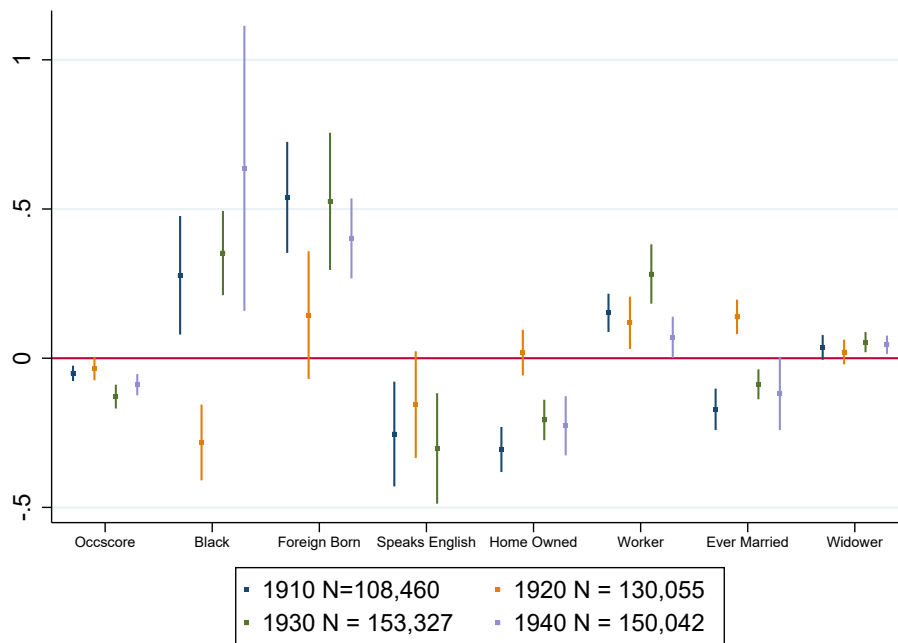
4.2.2 Cross-Sectional Regressions

We further explore these patterns with multivariate regression, expanding the model of Equation 1 to look simultaneously not only at Occupational Income Scores, black, and foreign-born, but also English-speaking, home ownership, being in the labor force, and being widowed or divorced. We also control for sex, age, and an indicator for missing occupation. We estimate these regressions separately for each year. Although actual income is available in 1940, we use only Occupational Income Scores in this regression analysis for consistency with the earlier years. Figure 7 visually presents the results. For each variable, it displays the point estimate and 95% confidence intervals, separately for each year. All coefficients and standard errors are reported in Appendix Table A.5. In all models, standard errors are computed by clustering at the Census division (enumeration districts for 1910-30 and tracts in 1940).

In all four decades, we find that higher Occupational Income Scores for the household head are associated with lower levels of pollution exposure. In 1910 and 1920, *ceteris paribus*, a one standard deviation increase in proxied income is associated with pollution exposures that are reduced by between 4 and 5 percent of a standard deviation. For 1930 and 1940, the relationship is more pronounced, ranging between 9 and 13 percent.

⁹Note the downward spikes in 1920 and 1930 at the 4th decile are for a mass in the distribution of Occupational Income Scores for low-level clerical workers such as telephone operators and typists, sandwiched between two groups of laborers.

Figure 7: Coefficient Plots from Cross-sectional Analysis with Full-Count Census



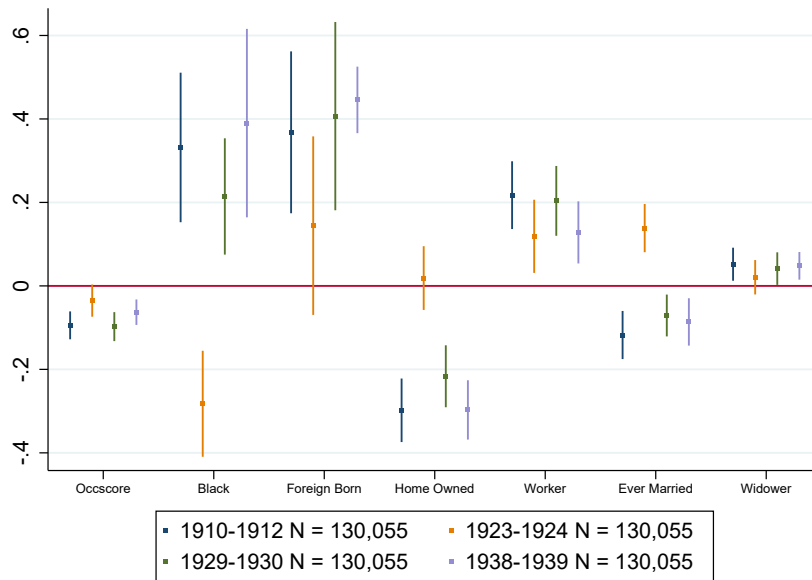
This figure reports a subset of the coefficients from estimating a version of Equation 1, expanded to include more demographic variables, on 4 separate samples (one for each decade). Household heads are the unit of observation. Pollution and income variables are standardized by within-sample standard deviations. For a complete set of results, see Appendix Table A.5.

Relative to income, with the exception of the anomaly in 1920, the results for race and nativity are much stronger. All else equal, black household heads in 1910 experience pollution levels that are 28% higher than their white counterparts. By 1940, the disparity increases to 64%. For foreign-born household heads, the penalty is relatively stable, ranging between 40 and 54 percent. Assimilation (speaking English) appears to offset roughly half of this penalty.¹⁰

Continuing to focus on 1910, 1930 and 1940, home ownership is associated with lower levels of pollution exposure as is being married. Conversely, being in the work force and/or being a widow or widower is associated with higher levels of pollution exposure. Overall these estimates suggest there was meaningful variation in pollution exposure across a range demographic characteristics. Perhaps most striking is how much larger is the estimated impact of race and nativity relative to these other characteristics, particularly given that all demographic variables are included in a single regression so these are *ceteris paribus* comparisons. And, as we explore further below, for black

¹⁰The Census didn't ask about speaking English in 1940.

Figure 8: Exploring the 1920 Pollution Anomaly



This figure reports results for four separate regressions. We fix demographics at their 1920 levels for all four regressions and only vary the pollution measures across these regressions. Thus there is one regression for each decade’s pollution levels (1910, 1920, 1930 and 1940.). Pollution and income variables are standardized by within sample standard deviations. For a complete set of results, see Appendix Table A.8.

Pittsburgher’s the relationship appears to strengthen significantly over our sample period—30 years that overlap the initial wave of the Great Migration and saw a rapid increase in racial segregation in the city.

Our conclusions are not sensitive to the sample definition using household heads. Appendix Tables A.6 and A.7 report results using only single men and single women respectively. These samples include boarders and individuals living with family members. In Subsection 4.3 below, we also discuss results with a full sample. In all cases, Occupational Income Score is negatively associated with pollution exposure, being foreign-born is positively associated with pollution, and, except for 1920, being black is also positively associated with pollution.

On the other hand, our results are more sensitive to year, with insignificant and sometimes counter-intuitive results in 1920. We have argued that, particularly for black individuals and their families, the 1920 pollution distribution is a relatively short-lived anomaly. To test this interpretation more directly, we replicate our analysis for household heads, but hold demographics constant at their 1920 levels. That is, we regress each

year’s pollution on 1920 demographics. Mechanically, the results from these regressions will be the same as those reported above in Figure 7 for 1920. However, for the other years they will be different. The idea is to test whether, in 1920, population was still sorted on long-run pollution averages, if not on actual 1920 pollution.

Figure 8 illustrates the results. (See Appendix Table A.8 for a complete report of the underlying statistics.) The figure shows that for all periods, except 1920, pollution levels were elevated in the neighborhoods where black people were concentrated in 1920. They are also higher in areas with more foreign-born, and lower in areas with higher income and higher home ownership. In other words, the reversed relationships we see in 1920 appear to be associated with a short-run change in the spatial distribution of pollution rather than a re-sorting of individuals across neighborhoods vis-a-vis pollution.

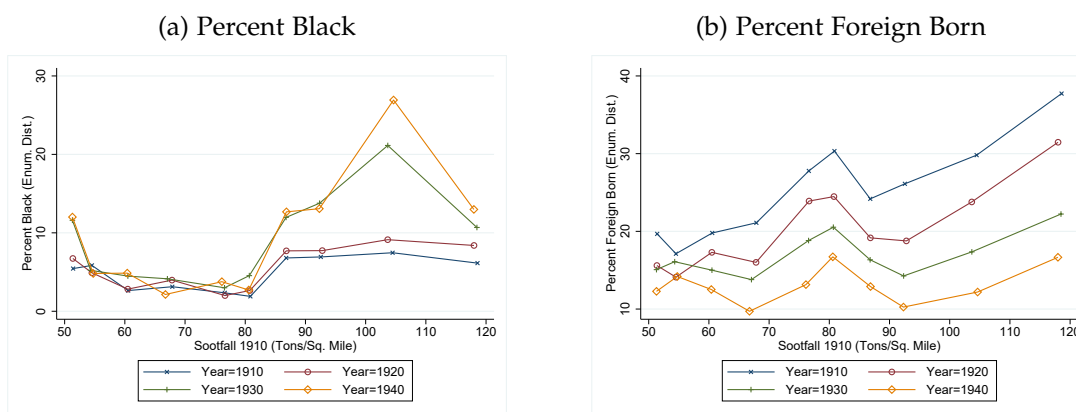
4.2.3 Dynamic Sorting on Pollution

In a somewhat similar vein, we can also look across decades to shed light on the dynamics of pollution exposure. One key finding in our analysis so far has been the fact that, as the Great Migration increased the size of Pittsburgh’s black population and the level of racial segregation increased, the correlation between race and pollution grew substantially. In general, the spatial distribution of pollution sources, and hence pollution exposure, was constrained by the basic geography of the city and the heavy reliance of its industrial base on access to the rivers. Thus, this increased correlation was likely the result of the sorting of individuals into neighborhoods rather than the systematic location of pollution sources into black neighborhoods. Although it is important to emphasize that this “sorting of individuals” was occurring in a highly discriminatory environment rife with systemic racism, particularly in housing markets, and thus shouldn’t be interpreted as representing systemic differences preferences for air quality.¹¹

As a starting point for considering sorting in response to pollution, we follow Currie et al. (2023) and create an index of how demographics have responded to lagged pollution. Specifically, for each census, we attach 1910 pollution, order the data by 1910 pollution exposure, cut it into ten bins, and calculate the percent black, percent foreign-born, and the average sootfall within each bin. Figure 9 presents the results. Looking at Panel a, we see that areas that were initially polluted in 1910 had higher black popu-

¹¹Christensen and Timmins (2022, 2023) consider the relative effects of “steering” and voluntary “sorting” today, as well as the effect of discriminatory constraints on the housing process.

Figure 9: Demographic Sorting Relative to 1910 Sootfall

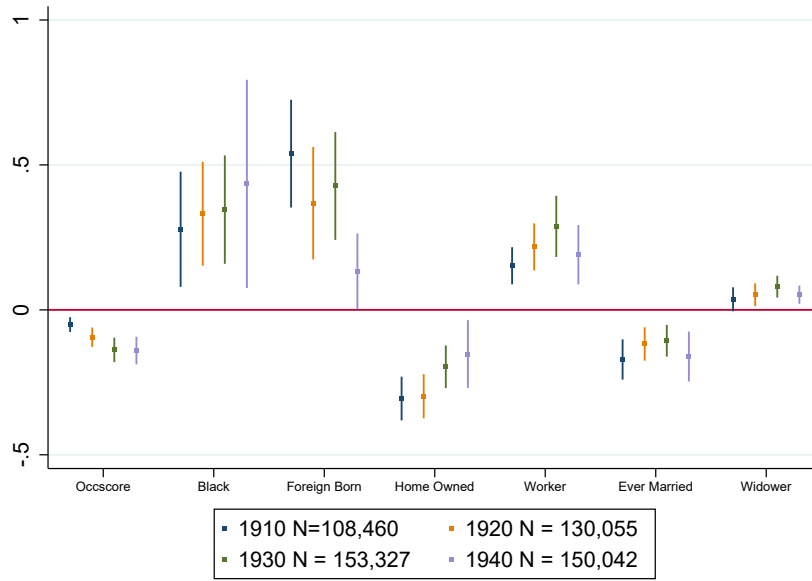


Note: This figure reports the mean Black percentage and mean Foreign Born percentage as a function of 1910 sootfall for the years 1910 through 1940. Bin-widths are chosen such that each bin has the same population.

lations in 1910, as previously noted, but now we also see that those same areas become more black over time. That is, as the Great Migration proceeded, blacks were systematically moving into the areas that were initially polluted. The fact that areas with greater 1910 pollution had more blacks in 1920 also corroborates our findings in Figures 7 and 8 that 1920 exposure was an anomaly. In Panel b, we see the opposite pattern holds for foreign-born. The most polluted areas had very high concentrations of foreign-born residents in 1910, but each subsequent decade saw a drop in their share in those areas.

To further explore how demographics adjusted over the next 30 years relative to these “initial” conditions, we regress 1910 sootfall levels on demographics in each of the four Census waves. Figure 10 displays the results and Appendix Table A.9 provides the underlying coefficients and standard errors. Confirming the trends in the raw data seen in Figure 9, Figure 10 shows that between 1910 and 1940, as the city became more racially segregated, blacks became increasingly concentrated in those areas that had been heavily polluted in 1910. This result reinforces our finding from the repeated cross-sections that the correlation between race and pollution increased over this time period and suggests that this increase was, at least in part, due to the sorting of individuals. The relationship between income and pollution also strengthens over this period. The opposite is true for nativity, where we see that over our 30 year period immigrants became less concentrated in those areas that were most polluted in 1910.

Figure 10: Dynamic Sorting of Household Heads (Dep. Var. = 1910 Sootfall)



Note: Note: We report results for four separate regressions. We fix pollution at 1910 levels for all four regressions and only vary the demographic measures across these regressions. Thus there is one regression for each decade's demographics (1910, 1920, 1930 and 1940.). Pollution and income variables are standardized by within sample standard deviations. For a complete set of results, see Appendix Table A.9.

4.3 Panel Data of Movers and Stayers

The analysis of the previous sub-section is based on repeated cross sections. However, the 1940 Census reports where residents lived five years prior, in 1935. Additionally, the Census Linking Project tracks a panel of individuals and their locations across Census waves (Abramitzky et al., 2020). These data allow us to analyze mobility patterns on an individual level.

We begin by focusing on race and nativity. We estimate the following model.

$$\begin{aligned}
 \text{Std. Pollution}_{i,1940} = & \alpha + \beta \cdot \text{Black}_i + \gamma \cdot \text{Foreign Born}_i + \delta \cdot \text{Change Nbrhd}_i \\
 & + \theta \cdot \text{Black X Chg Nbrhd}_i + \phi \cdot \text{For. Born X Chg Nbrhd}_i \quad (2) \\
 & + \mu' X_i + f(\text{income}_{i,1940}, \text{occ score}_{i,\text{lag}}) + \varepsilon_i
 \end{aligned}$$

That is, we regress pollution exposure in 1940 (expressed in standard deviations) on race (black/white), an indicator for whether the individual moved from one Pittsburgh neighborhood to another during the relevant time period (with staying being the alter-

Table 7: Sorting by Race and Pollution

	1940 Full	1940 Full	1940 - 1930	1940 - 1910	1940 - 1930	1940 - 1910
Black	0.553** (0.217)	0.271* (0.141)	0.135 (0.130)	0.0310 (0.188)	-1.128 (3.732)	-3.332 (4.953)
Foreign Born	0.366*** (0.0623)	0.346*** (0.0568)	0.288*** (0.0559)	0.153** (0.0681)	5.398*** (1.722)	2.915 (2.302)
Change Nbrhd		-0.100*** (0.0284)	-0.181*** (0.0405)	-0.368*** (0.0685)	-8.821*** (2.588)	-17.61*** (2.731)
Black X Chg Nbrhd		0.418*** (0.130)	0.307*** (0.0849)	0.441*** (0.115)	9.429*** (3.322)	19.42*** (5.213)
FB X Chg Nbrhd		0.0100 (0.0275)	-0.0972** (0.0390)	0.0347 (0.0658)	-4.256** (1.789)	-5.403* (2.858)
Income 1940	-0.0950*** (0.0157)	-0.0909*** (0.0150)				
Dep. Var.	1940 Soot	1940 Soot	1940 Soot	1940 Soot	Chg Soot Pctile	Chg Soot Pctile
Demographic Cntrls	X	X	X	X	X	X
Flex. Inc. Cntrls			X	X	X	X
N	415505	415505	44755	13232	44755	13232

Standard errors in parentheses, clustered by Census division.

* $p < 0.10$, ** $p < 0.05$, *** $p < 0.01$

Note: Pollution levels and incomes are expressed in terms of within census standard deviations. All regressions include a complete set of 1940 controls (see Appendix Table A.10 for a complete list of coefficient estimates). Columns 1 and 2 include all individuals in the 1940 census, with changes in neighborhood and/or county being based on the census' 5 year move move variable. Columns 3 and 4 match samples of men from the 1940 census to the 1930 and 1910 censuses respectively. Columns 5 and 6 use the matched samples as well, with the dependent variable being the change in pollution percentile from period 1 to period 2.

native), and an interaction between the two. We do the same for nativity.¹² We also include either controls for 1940 income (specifications 1 and 2) or flexible controls for the pattern and levels of occupational income scores in both periods (columns 3 thru 6), as well as a full suite of 1940 demographic variables, X.¹³

Table 7 presents the results for the key coefficients of interest. (See Appendix Ta-

¹²Because we only observe pollution in Pittsburgh, in all models, every individual included in the sample was living in Pittsburgh in 1940. Furthermore, they were in the region in both time periods—in Allegheny County in 1935 or in Pittsburgh in 1930 or 1910.

¹³The analyses in specifications 1 and 2 are based solely on the data from the 1940 census and, in the case of specification 2, its question about retrospective location 5 years earlier. As a result, we only observe demographic data in 1940 for this specification and can therefore use actual income in our estimation. In specifications 3 thru 6 we are linking across censuses and thus have income measures in two periods and only have actual income for the second period. Here, we switch to using Occupational Income Score and control flexibly for different patterns of labor force participation, missing Scores and levels of the Scores in each period.

ble [A.10](#) for the full set of coefficient estimates.) Columns 1-4 consider how mobility affects final exposure in 1940, and so use 1940 sootfall as the dependent variable. Columns 1 and 2 include all individuals in the 1940 Census—not just household heads—who reported living in Pittsburgh in 1940 and in Pittsburgh or the surrounding Allegheny County in 1935. This sample pools single men, single women and all married individuals. Because it differs from other samples, in column 1 we first replicate our earlier cross-sectional analysis. The results mirror those of the earlier tables. The relative importance of race and income reinforce results found in the earlier analysis—particularly demonstrating that our results on income are not sensitive to the use of actual income as opposed to Occupational Income Score (at least for 1940). In column 2, we now include an indicator for having changed neighborhoods over the last five years, as well as interactions with black and foreign-born. Native-born white non-movers are the omitted category. Thus, the coefficient on black can be interpreted as the differential exposure (relative to non-moving whites) for non-moving blacks. We find that these individuals were, on average, exposed to 0.27 standard deviations more pollution in 1940 than were their non-moving white counterparts. For non-moving foreign-born residents, the difference is 0.35 standard deviations. The marked importance of racial differences in neighborhood sorting is demonstrated by the coefficients on the interaction terms between race and changed neighborhood. Native-born whites who reported moving over the previous 5 years were exposed to roughly a tenth of a standard deviation *less* pollution than non-moving whites. The interaction for foreign-born is small and statistically insignificant, indicating that their mobility patterns were comparable to native-born whites. In contrast, blacks who reported moving in the last 5 years were exposed to 0.32 standard deviations *more* soot than were non-moving blacks (0.418-0.100). Thus, mobility widened the pollution gap: the coefficient on the interaction term indicates that differential patterns between white movers and black movers yielded an estimated movement-generated gap of an additional 0.42 standard deviations.

Columns 3 and 4 include samples of men who were successfully linked across censuses by the Census Linking Project and who report living in Pittsburgh in both periods. Column 3 uses matched census samples between 1930 and 1940 and column 4 uses 1910 to 1940.¹⁴ As discussed in Section [3.2.2](#), the requirements of the matching process leave us with a much smaller all-male sample. Because we observe occupations in 1930 and

¹⁴In these columns we define an individual as having changed neighborhoods if their 1940 census division does not intersect with their census division from the prior period.

1910, we can control flexibly for both baseline and final income as well as changes in income. In column 3, looking back over a 10 year window with our matched sample yields fairly similar results to those of column 2. Over the 10-year window, black movers were associated with 0.31 standard deviations more sootfall than non-black movers, vs. 0.42 for the 5-year window. Finally column 4 looks back to 1910. Over this 30 year period, the movement-generated gap between black and white movers is estimated to be 0.44 standard deviations. For foreign-born, moves result in less pollution, at a rate comparable to native-born whites over the entire period, but even faster than native-born whites over the decade of the 1930s. This result is consistent with the finding of Figure 10, where we find a notable drop in the partial correlation between pollution and foreign-born in 1940.

While the first four models focus solely on final pollution exposure at the end of the period (1940), we can also explore *changes* in exposure. Continuing to use the linked data, we thus regress 1940-1930 and 1940-1910 changes in sootfall exposure, respectively, on our interactions of race and mobility. Columns 5 and 6 of Table 7 present the results of this analysis. Here, the dependent variable is the change in an individual's soot exposure percentile—i.e., soot exposure percentile in 1940 minus soot exposure percentile in either 1930 or 1910. For the 1930 to 1940 period we estimate a movement-generated gap of roughly 9 percentile points for blacks, while for 1910 to 1940 we estimate a movement-generated gap of roughly 19 percentile points. For foreign-born, we again estimate that they are moving to cleaner areas even faster than native-born whites.

While the regressions in Table 7 control for income, there is still a concern that the reported results could somehow reflect inherent differences in income or wealth between black and white Pittsburghers at the time. To explore this possibility, we split the sample in half at the median income and re-estimate the models from columns 2 and 3 of Table 7.¹⁵

Table 8 reports the results. Columns 1 and 2 are based on the 1935-40 mobility question from the full-count 1940 Census. Because we don't observe incomes for 1935, this model splits the sample at the median income for 1940, which was \$1,190. Columns 3 and 4 use the linked data between the 1930 and 1940 censuses. Because we prefer to use

¹⁵Note that we omit an analysis of the 1910-1940 linked sample due to the small number of black men earning above the median income in 1910; for this linkage there are less than 100 black men in the sample. For the 1930-1940 linkage, we have 1,227 black men below and 252 black men above the median Occupational Income Score. In the 1935-1940 sample, we have 8,201 black men below the 1940 median income and 2,676 black men above the 1940 median income.

Table 8: Sorting by Race and Pollution: Income Split

	Below Median	Above Median	Below Median	Above Median
Black	0.231 (0.148)	0.275** (0.107)	0.227 (0.150)	0.233 (0.158)
Foreign Born	0.331*** (0.0603)	0.289*** (0.0626)	0.353*** (0.0708)	0.323*** (0.0603)
Changed Neighborhood	-0.0865*** (0.0302)	-0.0751*** (0.0203)	-0.187*** (0.0472)	-0.174*** (0.0449)
Black X Neighborhood	0.361*** (0.118)	0.309*** (0.106)	0.297*** (0.0880)	0.422** (0.164)
FB X Chg Nbrhd	0.0349 (0.0312)	-0.00523 (0.0260)	-0.140* (0.0728)	-0.141** (0.0613)
Annual Income	-0.104*** (0.0241)	-0.0997*** (0.0162)		
Dep. Var.	1935-1940	1935-1940	1930-1940	1930-1940
Demographic Cntrls	X	X	X	X
Flex. Inc. Cntrls			X	X
N	64426	64351	10589	9796

Standard errors in parentheses, clustered by Census division.

* $p < 0.10$, ** $p < 0.05$, *** $p < 0.01$

Note: Pollution levels are expressed in terms of within census standard deviations. For the 1935-1940 the sample is split above and below \$1,190 in 1940 income. For the 1930-1940 the sample is split above and below a 1930 Occupational Income Score of 24.

lagged income where possible, here we split the sample by 1930 Occupational Income Scores (at a median score of 24). For both samples, the results are stable across the income split. Moreover, they are remarkably consistent with the aggregate estimates in Table 7. For 1935-1940 moves, whites decrease pollution exposure by about 0.1 standard deviations in both tables, and blacks increase it by about 0.4 standard deviations relative to whites. For 1930-1940 moves, whites decrease pollution exposure by about 0.2 standard deviations in both tables, and blacks increase it by about 0.3 standard deviations relative to whites. Foreign-born residents decreased pollution at the same rate as native-born whites or faster, depending on the time period considered.

Collectively, the results of Figures 9 and 10 and Tables 7 and 8 demonstrate that systematic differences in the racial sorting of individuals and the associated increase in racial segregation that occurred in Pittsburgh over this period led to marked increases in racial inequity in exposure to pollution. In 1910, white foreign-born residents vastly outnumbered black residents, but both were segregated into higher polluted areas. Over the ensuing years of the Great Migration, both native-born whites and foreign-born res-

idents systematically moved to less polluted areas, while black residents moved to more polluted areas. These patterns resulted in a notably widened black-white difference by 1940.

4.4 The Role of Prices

We conclude our empirical analysis with an assessment of the salience of sootfall in Pittsburgh’s housing market over this period. If pollution was an aspect of housing location that was relevant to people’s location choices, it should have been capitalized into housing prices. We explore this issue here.

The Census first asks about home values and rents in 1930. Thus, our systematic analysis of the pollution-price relationship is limited to 1930 and 1940. However, even for the earlier period, there is anecdotal evidence supporting a link. As noted previously, in his study of smoke’s damages in Pittsburgh, O’Connor (1913) surveyed local real estate experts about the effect of soot on property values and rents. While a handful of responses argued that impacts were negligible or impossible to assess, the majority discussed extreme examples where property values/rents were discounted on the order of 25 to 50 percent. A typical response was that of real estate agent Edward Lang who stated, “All the property in this section (that is residence property) has depreciated fully 50% by reason of the excessive smoke nuisance.”¹⁶

For a more systemic analysis, we utilize the linked hedonic data set for 1930 and 1940 discussed in 3.3. We estimate the model presented in Equation 3 separately for owner occupied and rental units in each of 1930 and 1940,

$$\ln P_j = \alpha + \beta \cdot \text{Sootfall}_j + \Gamma' Z_j + \varepsilon_i \quad (3)$$

where P_j is either housing value or rent, respectively, in neighborhood j and Sootfall_j is normalized by its standard deviation. The vector Z_j represents housing characteristics, including indicator variables for # of bedrooms, # of bathrooms and total rooms interacted with total living space, as well as age and age², an indicator for new build, lot area and a set of neighborhood indicators. We trim for outliers at the one percent level based on rent, price, lot size and square feet of living space. When modeling sales price, we also trim at the 95% for the ratio of 2022 assessed value to 1930/1940 reported value in

¹⁶For more on the broader activities of the Mellon Institute see [Banzhaf and Walsh \(2024\)](#). The specific letter quoted here is located in the University of Pittsburgh Archives, AIS.1983.07.Ser.1.ff8.

Table 9: Hedonic Analysis (Dep. Var. = Housing Price/Rent)

	1930	1930	1940	1940	1930	1940
Tons/Sq Mile Soot	-0.0587*** (0.00688)	-0.0547*** (0.0137)	-0.0512*** (0.00641)	-0.0487*** (0.00777)	0.00502 (0.0298)	0.0463 (0.0314)
Dep. Variable	Price 1930	Rent 1930	Price 1940	Rent 1940	Price 2010-23	Price 2010-23
Observations	12635	3773	11345	6296	6369	5665
Adjusted R-squared	0.658	0.416	0.601	0.540	0.415	0.374

Standard errors in parentheses, clustered by Census division.

* $p < 0.10$, ** $p < 0.05$, *** $p < 0.01$

Note: Pollution levels are expressed in terms of within census standard deviations.

an attempt to further tease out any potentially inaccurate matches. Our results are not sensitive to this trimming.

The results from this analysis are quite robust and are presented in the first four columns of Table 9. Columns 1 and 2 present results for 1930, for asset values and rents respectively. Columns 3 and 4 do the same for 1940. On average, a one standard deviation increase in sootfall is associated with price and/or rent discounts roughly on the order of 5 to 6 percent.

Earlier, we argued that pollution and demographic compositions were not simultaneously determined, as the location of industrial facilities was largely dictated by geography. However, this raises the potential concern that these price effects are being driven by that geography, e.g. distance to the river, distance to the central business district, or elevation. But if such persistent factors, potentially correlated with pollution, were driving our results, we would expect them to continue to affect prices today. Accordingly, as a placebo test, in columns 5 and 6 we regress *recent* sales prices (from 2010-2023) on 1930 and 1940 pollution levels respectively. To address price appreciation over the 13 year period between 2010 and 2023, we add year fixed effects to the model of Equation 3. These last results show that, for modern day Pittsburgh, when sootfall is no longer a daily concern, the spatial pattern of prices no longer has a relationship with the patterns of pollution from 70+ years ago. This finding suggests that our pollution results are not driven by some correlation between sootfall and other underlying and persistent geographic patterns of location preference.

Given these findings on housing prices, it is logical to ask if the racial patterns that we measure here are being driven solely by black households choosing to live in cheaper housing, which is correlated with higher pollution levels. While we control for income

Table 10: Household Head Regressions with Price Controls

	1930	1940
Occscore	-0.0847*** (0.0153)	-0.0736*** (0.0161)
Black	0.328*** (0.0714)	0.628** (0.243)
Foreign Born	0.451*** (0.115)	0.394*** (0.0677)
Speaks English	-0.253*** (0.0936)	
Home Owned	-0.331*** (0.0488)	-0.273*** (0.0631)
Worker	0.193*** (0.0395)	0.0473 (0.0325)
Widower	0.0378** (0.0165)	0.0431*** (0.0150)
Divorced	-0.00714 (0.0340)	-0.0302 (0.0390)
Female	0.0248 (0.0190)	-0.0930*** (0.0244)
Age	0.00208*** (0.000627)	-0.00262*** (0.000789)
Missing Occ.	-0.237*** (0.0433)	-0.0691 (0.0659)
Ever Married	-0.0985*** (0.0248)	-0.124** (0.0623)
Rent	-0.00416*** (0.000797)	-0.00247*** (0.000568)
Home Value	-0.00650*** (0.00148)	-0.00752** (0.00292)
Constant	3.923*** (0.0663)	2.049*** (0.132)
Observations	148261	146296
R^2	0.060	0.086
Adjusted R^2	0.060	0.086

Standard errors in parentheses, clustered by Census division.

* $p < 0.10$, ** $p < 0.05$, *** $p < 0.01$

Note: The Table reports the coefficients from estimating a version of Equation 1, expanded to include more demographic variables, on 2 separate samples, one for 1930 and one for 1940. Household heads are taken as the unit of observation. Pollution and income variables are standardized by within sample standard deviations. Rents are monthly and home value is measured in thousands of dollars.

differences in these regressions, it is well documented that, conditional on income, black wealth levels are systematically much lower than are white wealth levels (Derenoncourt, Kim, Kuhn, & Schularick, 2023). Thus, even with income controls there could be scope for a direct effect of housing prices to drive our results. To test this channel, in Table 10 we replicate our baseline specification adding housing prices and rents to the set of controls. Consistent with the hedonic regression results, households living in housing with higher rents or home values are, *ceteris paribus*, exposed to cleaner air. Moving from the 25th to 75th percentile in rent/value is associated with lower air pollution exposures on the order of 0.03 to 0.15 standard deviations. However, inclusion of these controls only leads to very modest reductions in the estimated black coefficient (a 6.8% reduction for 1930 and a 1.1% reduction for 1940).

These final results provide clear evidence that air pollution (sootfall) was salient for Pittsburghers over the time frame we study—a result that is not surprising given the anecdotal evidence from the day. However, while pollution was salient in housing markets, our analysis also shows that the dynamic patterns of racial differences in exposure to pollution which we observe were almost certainly not just a by-product of black households choosing to buy/rent cheaper homes in general.

5 Conclusion

We explore the relationship between air pollution exposure and demographic characteristics in Pittsburgh during the period of 1910 to 1940, which witnessed a marked rise in racial segregation in Northern urban centers. Utilizing a unique and recently digitized historical panel data set on the spatial distribution of air pollution in Pittsburgh, perhaps the most polluted city in the pre-war United States, our findings reveal that race and nativity were much stronger predictors of exposure to pollution than income. Specifically, black Pittsburgh residents were exposed to significantly higher levels of pollution than their white counterparts with similar demographic characteristics. This disparity grew to roughly three quarters of a standard deviation in pollution exposure by 1940.

Our analysis further reveals that within-city moves were a key driving force behind the increasing correlations between race and pollution exposure. Relative to white non-movers, white movers experienced lower levels of pollution. However, for black residents, this relationship was reversed, with black movers being exposed to higher pollu-

tion levels than non-moving black residents. Taken together, these results suggest that the cumulative effect of moving on black-white exposure gaps was between one half to three quarters of a standard deviation in contemporaneous pollution exposure.

Meanwhile, foreign-born whites appear to have been assimilating with their native-born counterparts. While in 1910 they were segregated into more polluted areas just like black residents, over time they moved to cleaner areas at the same rate as native-born whites or even faster. This pattern is consistent with the finding of [Abramitzky, Boustan, Jácome, and Pérez \(2021\)](#) that immigrants have had high rates of upward mobility throughout US history. By 1940, black-white pollution gaps were much more stark than gaps by nativity.

We also shed light on the salience of air pollution in Pittsburgh's housing market, specifically the relationship between sootfall and housing prices in 1930 and 1940. Our analysis finds that a one standard deviation increase in sootfall was associated with both sales price and rental discounts of between 5 and 6 percent, providing perhaps the earliest systematic evidence to date of the capitalization of air pollution into housing prices. Further analysis demonstrates that these systematic differences in housing prices are not driving our main results on race, nativity and income

Our findings have important implications for the persistence of racial and economic inequalities in the United States. Taken together, they suggest that patterns of racial and economic inequality in Pittsburgh were likely reinforced by disparate exposure to air pollution. This concern is particularly significant when considering the growing evidence of the link between pollution exposure and a broad range of developmental, material, and health outcomes. While the pollution experienced in Pittsburgh were particularly acute, pollution levels were generally elevated in industrial cities across the U.S. during this time period. Given the broad prevalence of racialized housing markets across virtually all U.S. cities throughout this era, these results likely have implications that extend beyond the City of Pittsburgh.

References

- Abramitzky, R., & Boustan, L. (2017). Immigration in American economic history. *Journal of Economic Literature*, 55(4), 1311–1345.
- Abramitzky, R., Boustan, L., Eriksson, K., Pérez, S., & Myera, R. (2020). *Census Linking Project: Version 2.0 [dataset]*. (<https://censuslinkingproject.org>)
- Abramitzky, R., Boustan, L., Jácome, E., & Pérez, S. (2021). Intergenerational mobility of immigrants in the United States over two centuries. *American Economic Review*, 111(2), 560–608.
- Akbar, P., Hickly, S., Shertzer, A., & Walsh, R. (2023). Racial segregation in housing markets and the erosion of black wealth. *Review of Economics and Statistics*.
- Almond, D., Currie, J., & Duque, V. (2018). Childhood circumstances and adult outcomes: Act II. *Journal of Economic Literature*, 56, 1360-1446.
- Banzhaf, H., & Farooque, O. (2013). Interjurisdictional housing prices and spatial amenities: Which measures of housing prices reflect local public goods? *Regional Science and Urban Economics*, 43(4), 635-648.
- Banzhaf, H., Ma, L., & Timmins, C. (2019). Environmental justice: The economics of race, place, and pollution. *Journal of Economic Perspectives*, 33(1), 185-208.
- Banzhaf, H., & Walsh, R. (2008). Do people vote with their feet? An empirical test of Tiebout's mechanism. *American Economic Review*, 98(3), 843-863.
- Banzhaf, H., & Walsh, R. (2024, April). Smoke from factory chimneys: The applied economics of air pollution in the Progressive Era. *National Bureau of Economic Research WP 32328*. Retrieved from <https://www.nber.org/papers/w32328> doi: 10.3386/w32328
- Beach, B., & Hanlon, W. (2018). Coal smoke and mortality in an early industrial economy. *Economic Journal*, 128, 2652-2675.
- Bishop, K., Ketcham, J., & Kuminov, N. (in press). Hazed and confused: The effect of air pollution on dementia. *Review of Economic Studies*.
- Bondy, S., M.and Roth, & Sager, L. (2020). Crime is in the air: The contemporaneous relationship between air pollution and crime. *Journal of the Association of Environmental and Resource Economists*, 7(3), 555–585.
- Borgschulte, M., Molitor, D., & Zou, E. (2022). Air pollution and the labor market: Evidence from wildfire smoke. *National Bureau of Economic Research Working Paper*, w29952.

- Brimblecombe, P. (1987). *The Big Smoke: A History of Air Pollution in London Since Medieval Times*. London: Methuen.
- Burkhardt, J., Bayham, J., Wilson, A., Carter, B. J. D., E., O'Dell, K., ..., & Pierce, J. (2019). The effect of pollution on crime: Evidence from data on particulate matter and ozone. *Journal of Environmental Economics and Management*, 98.
- Christensen, P., & Timmins, C. (2022). Sorting or steering: The effects of housing discrimination on neighborhood choice. *Journal of Political Economy*, 133(8), 2110-2163.
- Christensen, P., & Timmins, C. (2023). The damages and distortions from discrimination in the rental housing market. *Quarterly Journal of Economics*, 138(4), 2505-2557.
- Collins, W., & Margo, R. (2006). Historical perspectives on racial differences in schooling in the United States. *Handbook of the Economics of Education*, 1, 107–154.
- Collins, W., & Margo, R. (2011). Race and home ownership from the end of the civil war to the present. *American Economic Review*, 101(3), 355–359.
- Colmer, J., & Voorheis, J. (2020). The grandkids aren't alright: The intergenerational effects of prenatal pollution exposure. *LSE Working Paper*. Retrieved from <https://eprints.lse.ac.uk/108495/>
- Commons, J. (1908). Standardization of housing investigations. *Publications of the American Statistical Association*, 11(84), 319-326.
- Currie, J., Graff Zivin, J., Mullins, J., & Neidell, M. (2014). What do we know about short- and long-term effects of early-life exposure to pollution? *Annual Review of Resource Economics*, 6, 217–247.
- Currie, J., Walker, R., & Voorheis, J. (2023). What caused racial disparities in particulate exposure to fall? New evidence from the clean air act and satellite-based measures of air quality. *American Economic Review*, 113(1), 71-97.
- Derenoncourt, E., Kim, C. H., Kuhn, M., & Schularick, M. (2022). The racial wealth gap, 1860-2020. *Working Paper*.
- Derenoncourt, E., Kim, C. H., Kuhn, M., & Schularick, M. (2023). Changes in the distribution of black and white wealth since the us civil war. *Journal of Economic Perspectives*, 37(4), 71–89.
- Deryugina, T., Heutel, G., Miller, N. H., Molitor, D., & Reif, J. (2019). The mortality and medical costs of air pollution: Evidence from changes in wind direction. *American Economic Review*, 109(12), 4178–4219.
- Fishback, P., LaVoice, J., Shertzer, A., & Walsh, R. (2023). The HOLC maps: How race and poverty influenced real estate professionals' evaluation of lending risk in the

- 1930s. *Journal of Economic History*.
- Fouquet, R. (2011). Long run trends in energy-related external costs. *Ecological Economics*, 70(12), 2380–2389.
- Graff Zivin, J., & Neidell, M. (2013). Environment, health, and human capital. *Journal of Economic Literature*, 51(3), 689–730.
- Hanlon, W. (2024). London fog: a century of pollution and mortality, 1866–1965. *Review of Economics and Statistics*, 106(4), 910-923.
- Hanna, R., & Oliva, P. (2015). The effect of pollution on labor supply: Evidence from a natural experiment in Mexico City. *Journal of Public Economics*, 122, 68–79.
- Heblich, S., Trew, A., & Zylberberg, Y. (2021). East-side story: Historical pollution and persistent neighborhood sorting. *Journal of Political Economy*, 129(5), 1508–1552.
- Isen, A., Rossin-Slater, M., & Walker, W. (2017). Every breath you take—every dollar you’ll make: The long-term consequences of the Clean Air Act of 1970. *Journal of Political Economy*, 125, 848-902.
- Kioumourtzoglou, M., Power, M., Hart, J., Okereke, O., Coull, B., Laden, F., & Weiskopf, M. (2017). The association between air pollution and onset of depression among middle-aged and older women. *American Journal of Epidemiology*, 185, 801–109.
- Lam, J. C., Han, Y., Wang, S., Li, V. O., Pollitt, M., & Warde, P. (2019). A comparative study of air pollution trends in historical London and contemporary Beijing. In M. Ozawa, J. Chaplin, M. Pollitt, D. Reiner, & P. Warde (Eds.), *In search of good energy policy* (pp. 282–304). Cambridge: Cambridge University Press.
- Lavy, V., Ebenstein, A., & Roth, S. (2014). The impact of short term exposure to ambient air pollution on cognitive performance and human capital formation. *National Bureau of Economic Research Working Paper*, w20648.
- Massey, D., & Denton, N. (1993). *American Apartheid: Segregation and the Making of the Underclass*. Cambridge: Harvard University Press.
- O’Connor, J. J. (1913). *The Economic Cost of the Smoke Nuisance to Pittsburgh, Smoke Investigation Bulletin No.4*. Pittsburgh: Institute of Industrial Research and School of Specific Industries.
- Parton, J. (1868). Pittsburgh. *Atlantic Monthly*, 70(1).
- Ruggles, S., Flood, S., Goeken, R., Grover, J., Meyer, E., Pacas, J., & Sobek, M. (2020). *IPUMS USA: Version 10.0*. <https://doi.org/10.18128/D010.V10.0>. (Minneapolis, MN: IPUMS)
- Schlenker, W., & Walker, W. (2016). Airports, air pollution, and contemporaneous health.

- Review of Economic Studies*, 83, 768–809.
- Shertzer, A., Walsh, R., & Logan, J. (2016). Segregation and neighborhood change in northern cities: New historical GIS data from 1900–1930. *Historical Methods: A Journal of Quantitative and Interdisciplinary History*, 49(4), 187–197.
- Shertzer, A., & Walsh, R. P. (2019). Racial sorting and the emergence of segregation in American cities. *Review of Economics and Statistics*, 101(3), 415–427.
- Tarr, J., & Lamperes, B. (1981). Changing fuel use behavior and energy transitions: The Pittsburgh smoke control movement, 1940–195. *Journal of Social History*, 14(4), 561-588.
- U.S. Department of Commerce. (1917). *Abstract of the Census of Manufacturers: 1914* (Tech. Rep.). Washington, DC.
- White, C. W., & Marcy, C. (1912). A study of the influences of varying densities of city smoke on the mortality from pneumonia and tuberculosis. *Transactions of the Fifteenth International Congress on Hygiene and Demography*, 14(4), 1020–1027.

A Summary Statistics and Additional Results

This appendix presents summary statistics, full sets of coefficients from regressions discussed in the main text, and additional robustness checks. Tables [A.1](#), [A.2](#), [A.3](#) show summary statistics for our primary sample of household heads; men linked between the 1910, 1930, and 1940 Censuses; and Allegheny County employees, respectively.

Table [A.5](#) corresponds with Figure [7](#) and reports the full set of coefficients of our soot-fall measure regressed on the economic and demographic characteristics of household heads. In addition to the coefficients shown in Figure [7](#), Table [A.5](#) also includes coefficients for age, sex, and an indicator variable for missing Occupation Income Scores. Age is not significantly correlated with pollution exposure in 1910 and 1930, but it displays a significant and negative correlation with pollution exposure in 1920 and 1940. The coefficient on female begins as positive and statistically significant in 1910 before losing magnitude in 1920 and 1930 and finally becoming significantly negative in 1940. The indicator for missing Occupation Income Score takes on a value of one when an individual reports participating in labor force but has an Occupation Income Score of zero assigned in the IPUMS data ([Ruggles et al. \(2020\)](#)). Including this variable partially corrects the measurement error that would otherwise attenuate the relationship between pollution exposure and Occupation Income Score.

As sensitivity analyses, Tables [A.6](#) and [A.7](#) show results from the same regression depicted in Figure [7](#) and Table [A.5](#) but vary the underlying sample. Rather than household heads, Table [A.6](#) uses single men not living with their parents or other older relatives. Table [A.7](#) uses a sample of women selected by the same criteria. Because married couples predominate in the sample of household heads, one might reasonably wonder if the results shown in Figure [7](#) are driven by factors specific to married couples. For example, individuals may prioritize spending money on living in cleaner areas after having children compared to when they were single. Running the same regression with other samples allows for a more comprehensive assessment of the relationships between pollution exposure and individual characteristics, and examining men and women separately allows for comparisons between genders.

Table [A.6](#) shows that the patterns of pollution exposure for single men are nearly identical to those of household heads. Greater income, as measured by Occupation Income Score, is associated with lower pollution. Black and foreign-born men are ex-

posed to higher levels of pollution in every year except the anomalous year of 1920, and the black-white gap grows substantially between 1910 and 1940. Speaking English reduces the pollution penalty associated with foreign-born, but the coefficients have lower statistical significance than in the sample of household heads. Table A.7 shows that single women exhibit similar patterns of pollution exposure as well after we drop women working as live-in domestic servants.¹⁷

Tables A.8 and A.9 expand on results presented Figures 8 and 10. Table A.8 provides evidence that the anomalous patterns of pollution exposure we find around 1920 emerged because of a short-term shift in the sources of air pollution rather than a re-sorting of residents. Blacks in 1920 were living in areas that had been more polluted in 1910-12 and would be again in 1929-30 and 1938-39, even though those neighborhoods were less polluted in 1923-24. Table A.9 holds pollution constant at its 1910 baseline and allows demographics to shift over time. The increasing magnitude in the black coefficient over time and the corresponding decrease in the foreign-born coefficient suggest that black residents sorted into already heavily polluted neighborhoods between 1910 and 1940 while foreign-born residents exited.

Table A.10 shows the full set of coefficients for the regressions used in Table 7. The sign and significance of coefficients for variables besides race and mover status remain broadly similar to results from A.5. For the linked samples in columns 3 through 6 we are also able to include additional controls for changes in Occupation Income Score and labor force status. Those entering the labor force tend to have higher exposure to pollution in 1940, perhaps indicative of the effect of leaving childhood homes in cleaner areas. Additionally, though the coefficient is not always statistically significant, those whose income increased between the initial Census year and 1940 experienced less pollution in 1940. This relationship suggests that individuals moved into cleaner areas as their incomes increased. Additionally, the coefficients for race and the interaction between race and mover status remaining positive and significant despite controlling for changes in income. The robustness of these coefficients provides further evidence that black residents of Pittsburgh faced barriers to entering cleaner neighborhoods that could not be overcome by increasing income.

¹⁷Women working as domestic servants varied from the rest of the population because they lived in wealthier areas with their employers despite having very low incomes.

Table A.1: Summary Statistics for Household Head Estimation Sample

	Census 1910	Census 1920	Census 1930	Census 1940
Sootfall	81.44 (20.68)	115.6 (28.04)	84.07 (22.00)	89.81 (52.55)
Occ. Income Score	19.04 (15.43)	18.38 (15.21)	19.15 (14.91)	20.75 (14.13)
Black	0.0546 (0.227)	0.0625 (0.242)	0.0832 (0.276)	0.0867 (0.281)
Foreign Born	0.431 (0.495)	0.373 (0.484)	0.312 (0.463)	0.247 (0.431)
F.Born, Spk.English	0.356 (0.479)	0.343 (0.475)	0.301 (0.459)	
Age	43.03 (12.92)	43.81 (13.12)	45.03 (13.22)	47.33 (14.14)
Female	0.146 (0.353)	0.148 (0.355)	0.155 (0.362)	0.212 (0.408)
Ever Married	0.960 (0.196)	0.958 (0.201)	0.947 (0.224)	0.927 (0.260)
Widowed/Widower	0.138 (0.345)	0.137 (0.343)	0.136 (0.343)	0.163 (0.370)
Divorced	0.00333 (0.0576)	0.00392 (0.0625)	0.00805 (0.0894)	0.0115 (0.106)
Owns Home	0.281 (0.449)	0.284 (0.451)	0.403 (0.491)	0.322 (0.467)
In Labor Force	0.873 (0.333)	0.874 (0.332)	0.861 (0.346)	0.766 (0.423)
Missing Occ Score	0.194 (0.395)	0.195 (0.396)	0.150 (0.357)	0.0114 (0.106)
Observations	108460	130055	153327	150042

Table A.2: Summary Statistics for Census Linking

	Unlinked to 1910	Linked to 1910	Unlinked to 1930	Linked to 1930
Sootfall	92.23 (54.23)	81.49 (43.67)	92.45 (54.56)	87.94 (49.71)
Occ. Income Score	15.11 (14.66)	24.77 (13.46)	15.11 (14.70)	17.92 (14.79)
Black	0.0924 (0.290)	0.0407 (0.198)	0.0929 (0.290)	0.0746 (0.263)
Foreign Born	0.136 (0.343)	0.102 (0.302)	0.136 (0.343)	0.126 (0.332)
Age	30.30 (19.48)	48.13 (13.34)	30.50 (19.86)	34.51 (17.90)
Ever Married	0.462 (0.499)	0.834 (0.372)	0.469 (0.499)	0.531 (0.499)
Widowed/Widower	0.0320 (0.176)	0.0650 (0.247)	0.0340 (0.181)	0.0318 (0.175)
Divorcee	0.00554 (0.0742)	0.00975 (0.0983)	0.00598 (0.0771)	0.00455 (0.0673)
Owns Home	0.334 (0.472)	0.453 (0.498)	0.322 (0.467)	0.430 (0.495)
In Labor Force	0.597 (0.491)	0.859 (0.348)	0.593 (0.491)	0.695 (0.461)
Missing Occ Score	0.0339 (0.181)	0.0110 (0.105)	0.0309 (0.173)	0.0424 (0.202)
Observations	260,162	13,129	228,484	44,807

Note: Table reports summary statistics of males from the 1940 census. "Female" variable is omitted because only men can be linked to earlier censuses, and "F.Born,Spk.English" variable is omitted because data was not collected on English fluency for the 1940 census.

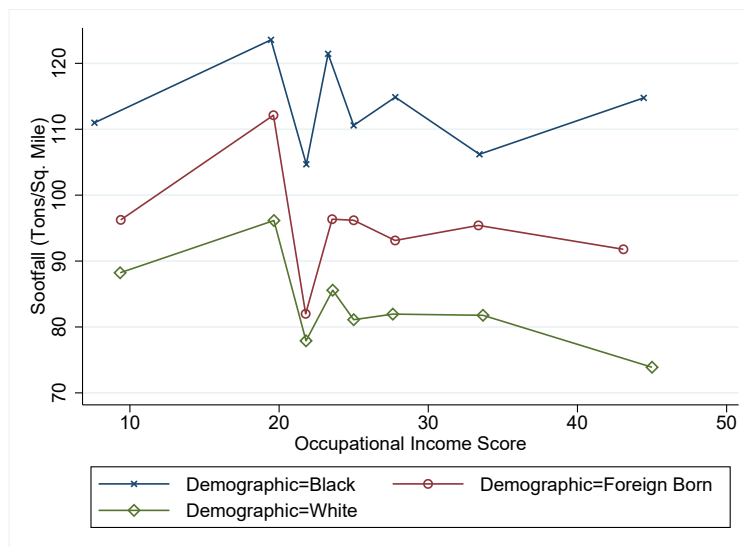
Table A.3: Summary Statistics for Matched County Employees

	Observations	Mean	SD	Min	Max
Panel A: 1910					
Sootfall	224	79.305	21.748	49.296	126.884
Annual Wage Income	224	1354.014	1024.251	300.000	9999.960
Occupation Income Score	224	25.884	9.813	6.000	62.000
Black	224	0.036	0.186	0.000	1.000
Foreign Born	224	0.121	0.326	0.000	1.000
Panel B: 1920					
Sootfall	235	112.131	27.069	75.900	202.066
Annual Wage Income	235	1706.752	789.465	660.000	7999.920
Occupation Income Score	235	28.251	8.980	15.000	80.000
Black	235	0.089	0.286	0.000	1.000
Foreign Born	235	0.102	0.303	0.000	1.000

Table A.4: Matching Statistics for Hedonic Data

	1930	1940
Census Data		
Single Head Households	154,803	173,035
Useable Addresses	74,400	75,962
Assessor's Data		
Single Family (pre 1930.1940)	66,260	83,617
Usable Addresses	65,566	82,688
Merged Data		
Strict Address Matches	19,844	22,664
Assessor's Lat/Long in E.D./Tract	19,013	20,453
Clean Hedonic Variables	16,408	17,641

Figure A.1: Pollution vs. Income by Demographic Group (1940 using Occupational Income Scores)



Note: This figure reports binned means of sootfall exposure, by demographics (White, Foreign Born, Black) for 1940 where the bins are constructed based on Occupational Income Score. Bin boundaries were chosen to equate populations across bins.

Table A.5: Pollution Exposure for Household Heads

	Census 1910	Census 1920	Census 1930	Census 1940
Occscore	-0.0508*** (0.0131)	-0.0352* (0.0196)	-0.129*** (0.0203)	-0.0886*** (0.0180)
Black	0.278*** (0.101)	-0.282*** (0.0646)	0.352*** (0.0718)	0.636*** (0.242)
Foreign Born	0.539*** (0.0946)	0.144 (0.109)	0.526*** (0.117)	0.401*** (0.0680)
Speaks English	-0.254*** (0.0893)	-0.155* (0.0909)	-0.302*** (0.0942)	
Home Owned	-0.306*** (0.0384)	0.0188 (0.0388)	-0.207*** (0.0345)	-0.226*** (0.0502)
Worker	0.152*** (0.0326)	0.119*** (0.0446)	0.282*** (0.0505)	0.0701** (0.0350)
Widower	0.0362* (0.0211)	0.0207 (0.0210)	0.0537*** (0.0172)	0.0451*** (0.0156)
Divorced	0.125* (0.0668)	-0.0551 (0.0508)	-0.0126 (0.0343)	-0.0295 (0.0392)
Female	0.103*** (0.0270)	-0.0446** (0.0191)	0.00590 (0.0194)	-0.101*** (0.0256)
Age	0.000487 (0.000686)	-0.00195*** (0.000745)	0.000834 (0.000644)	-0.00314*** (0.000812)
Missing Occ.	-0.191*** (0.0404)	-0.0934* (0.0527)	-0.341*** (0.0544)	-0.0991 (0.0675)
Ever Married	-0.171*** (0.0353)	0.138*** (0.0294)	-0.0876*** (0.0255)	-0.118* (0.0622)
Constant	3.902*** (0.0683)	4.051*** (0.0579)	3.787*** (0.0610)	1.998*** (0.128)
Observations	108460	130055	153327	150042
R^2	0.063	0.008	0.045	0.077
Adjusted R^2	0.063	0.007	0.045	0.077

Standard errors in parentheses

* $p < 0.10$, ** $p < 0.05$, *** $p < 0.01$

Note: Pollution levels and Occupation Scores are expressed in terms of within census standard deviations. SEs clustered at the Census division.

Table A.6: Pollution Exposure for Single Men

	Census 1910	Census 1920	Census 1930	Census 1940
Occscore	-0.0443*** (0.0134)	-0.0352** (0.0139)	-0.105*** (0.0138)	-0.0626*** (0.0138)
Age	0.00626** (0.00293)	0.000326 (0.000951)	0.00285*** (0.000820)	0.000446 (0.00107)
Black	0.266** (0.133)	-0.168** (0.0710)	0.362*** (0.0857)	0.773** (0.326)
Foreign Born	0.433** (0.189)	0.374* (0.191)	0.382*** (0.128)	0.426*** (0.0851)
Speaks English	-0.242 (0.207)	-0.214 (0.171)	-0.197* (0.108)	
Home Owned	-0.376*** (0.0523)	-0.0951** (0.0414)	-0.250*** (0.0385)	-0.269*** (0.0722)
Widower	-0.189** (0.0734)	0.0143 (0.0305)	-0.0941*** (0.0296)	-0.150*** (0.0533)
Divorced	-0.0187 (0.0898)	-0.0157 (0.0695)	-0.102*** (0.0387)	-0.139** (0.0607)
Worker	0.213*** (0.0780)	0.235*** (0.0604)	0.336*** (0.0565)	0.133*** (0.0370)
Constant	3.513*** (0.120)	4.130*** (0.0781)	3.960*** (0.0669)	1.676*** (0.0947)
Observations	30904	25330	27060	24298
R^2	0.076	0.021	0.059	0.128
Adjusted R^2	0.075	0.021	0.059	0.128

Standard errors in parentheses

* $p < 0.10$, ** $p < 0.05$, *** $p < 0.01$

Note: Pollution levels and Occupation Scores are expressed in terms of within census standard deviations. SEs clustered at the Census division.

Table A.7: Pollution Exposure for Single Women

	Census 1910	Census 1920	Census 1930	Census 1940
Occscore	-0.0474*** (0.0151)	0.0400** (0.0187)	-0.0704*** (0.0175)	-0.0628*** (0.0178)
Age	-0.00256 (0.00164)	-0.000379 (0.00101)	0.000472 (0.000857)	-0.00460*** (0.000982)
Black	0.276*** (0.0985)	-0.0911 (0.0811)	0.547*** (0.105)	0.805*** (0.296)
Foreign Born	0.554*** (0.0962)	0.216** (0.0973)	0.395*** (0.0975)	0.391*** (0.0634)
Speaks English	-0.375*** (0.0919)	-0.151* (0.0810)	-0.202** (0.0867)	
Home Owned	-0.231*** (0.0356)	0.0187 (0.0387)	-0.182*** (0.0356)	-0.167*** (0.0535)
Widow	0.0299 (0.0451)	0.0662* (0.0348)	0.0715** (0.0282)	0.0618** (0.0272)
Divorced	0.134** (0.0605)	0.0403 (0.0620)	0.0111 (0.0402)	-0.0347 (0.0411)
Worker	0.138** (0.0535)	-0.106** (0.0467)	0.187*** (0.0501)	0.0643 (0.0430)
Constant	4.022*** (0.144)	4.036*** (0.0625)	4.096*** (0.0695)	1.912*** (0.109)
Observations	21401	23964	30638	35049
R^2	0.048	0.004	0.036	0.086
Adjusted R^2	0.048	0.004	0.035	0.086

Standard errors in parentheses

* $p < 0.10$, ** $p < 0.05$, *** $p < 0.01$

Note: Pollution levels and Occupation Scores are expressed in terms of within census standard deviations. Live-in domestic servants are dropped from the sample. SEs clustered at the Census division.

Table A.8: Fixing 1920 Demographics

	Pollution 1910-1912	Pollution 1923-1924	Pollution 1929-1930	Pollution 1938-39
Occscore	-0.0945*** (0.0170)	-0.0352* (0.0196)	-0.0976*** (0.0177)	-0.0630*** (0.0155)
Black	0.332*** (0.0912)	-0.282*** (0.0646)	0.214*** (0.0709)	0.390*** (0.115)
Foreign Born	0.368*** (0.0987)	0.144 (0.109)	0.407*** (0.115)	0.446*** (0.0405)
Speaks English	-0.0239 (0.0842)	-0.155* (0.0909)	-0.120 (0.0962)	
Home Owned	-0.298*** (0.0387)	0.0188 (0.0388)	-0.216*** (0.0378)	-0.297*** (0.0361)
Worker	0.217*** (0.0413)	0.119*** (0.0446)	0.204*** (0.0426)	0.128*** (0.0378)
Widower	0.0519** (0.0201)	0.0207 (0.0210)	0.0414** (0.0199)	0.0481*** (0.0168)
Divorced	0.0990* (0.0521)	-0.0551 (0.0508)	0.0449 (0.0449)	-0.0307 (0.0503)
Female	0.0248 (0.0190)	-0.0446** (0.0191)	-0.00756 (0.0184)	-0.0436** (0.0202)
Age	-0.000266 (0.000644)	-0.00195*** (0.000745)	-0.000684 (0.000659)	-0.00342*** (0.000521)
Missing Occ.	-0.249*** (0.0501)	-0.0934* (0.0527)	-0.278*** (0.0516)	-0.178*** (0.0472)
Ever Married	-0.118*** (0.0293)	0.138*** (0.0294)	-0.0709*** (0.0255)	-0.0863*** (0.0289)
Constant	3.850*** (0.0580)	4.051*** (0.0579)	3.960*** (0.0581)	1.966*** (0.0678)
Observations	129287	130055	130055	130055
R^2	0.058	0.008	0.041	0.076
Adjusted R^2	0.058	0.007	0.041	0.076

Standard errors in parentheses

* $p < 0.10$, ** $p < 0.05$, *** $p < 0.01$

Note: Pollution levels and Occupation Scores are expressed in terms of within census standard deviations. SEs clustered at the Census division.

Table A.9: Fixing 1910 Pollution

	Census 1910	Census 1920	Census 1930	Census 1940
Occscore	-0.0508*** (0.0131)	-0.0945*** (0.0170)	-0.138*** (0.0215)	-0.140*** (0.0241)
Black	0.278*** (0.101)	0.332*** (0.0912)	0.346*** (0.0951)	0.434** (0.182)
Foreign Born	0.539*** (0.0946)	0.368*** (0.0987)	0.427*** (0.0946)	0.133** (0.0660)
Speaks English	-0.254*** (0.0893)	-0.0239 (0.0842)	-0.213*** (0.0758)	
Home Owned	-0.306*** (0.0384)	-0.298*** (0.0387)	-0.196*** (0.0374)	-0.152** (0.0592)
Worker	0.152*** (0.0326)	0.217*** (0.0413)	0.288*** (0.0536)	0.190*** (0.0518)
Widower	0.0362* (0.0211)	0.0519** (0.0201)	0.0800*** (0.0191)	0.0523*** (0.0160)
Divorced	0.125* (0.0668)	0.0990* (0.0521)	0.0271 (0.0457)	0.0911* (0.0511)
Female	0.103*** (0.0270)	0.0248 (0.0190)	-0.0300 (0.0214)	-0.0956*** (0.0245)
Age	0.000487 (0.000686)	-0.000266 (0.000644)	-0.000419 (0.000643)	-0.000791 (0.000850)
Missing Occ.	-0.191*** (0.0404)	-0.249*** (0.0501)	-0.372*** (0.0554)	-0.307*** (0.0706)
Ever Married	-0.171*** (0.0353)	-0.118*** (0.0293)	-0.107*** (0.0278)	-0.161*** (0.0436)
Constant	3.902*** (0.0683)	3.850*** (0.0580)	3.860*** (0.0627)	4.099*** (0.101)
Observations	108460	129287	139778	139547
R^2	0.063	0.058	0.044	0.045
Adjusted R^2	0.063	0.058	0.044	0.045

Standard errors in parentheses

* $p < 0.10$, ** $p < 0.05$, *** $p < 0.01$

Note: Pollution levels and Occupation Scores are expressed in terms of within census standard deviations. SEs clustered at the Census division.

Table A.10: Link Between Moving and Pollution Exposure (Full Results)

	1940 Full	1940 Full	1940 - 1930	1940 - 1910	1940 - 1930	1940 - 1910
Black	0.553** (0.217)	0.271* (0.141)	0.135 (0.130)	0.0310 (0.188)	-1.128 (3.732)	-3.332 (4.953)
Age	-0.00251*** (0.000919)	-0.00273*** (0.000942)	-0.00342*** (0.00113)	-0.00622*** (0.00172)	-0.0824** (0.0346)	-0.0608 (0.0584)
Foreign Born	0.366*** (0.0623)	0.346*** (0.0568)	0.288*** (0.0559)	0.153** (0.0681)	5.398*** (1.722)	2.915 (2.302)
Never Married	0.0607*** (0.0229)	0.0452* (0.0233)	0.0780*** (0.0267)	0.106*** (0.0364)	0.469 (0.937)	1.586 (1.128)
Divorced	-0.0407 (0.0375)	-0.0340 (0.0352)	0.150* (0.0835)	-0.0384 (0.0841)	2.515 (2.144)	-2.555 (3.218)
Widower	0.0280** (0.0108)	0.0281*** (0.0104)	0.0101 (0.0269)	0.0517 (0.0389)	-1.057 (1.089)	2.264 (1.426)
Working	0.0683*** (0.0144)	0.0683*** (0.0138)	0.180*** (0.0349)	0.0492 (0.0535)	-0.462 (1.206)	-4.105** (2.024)
Income 1940	-0.0950*** (0.0157)	-0.0909*** (0.0150)				
Homeowner	-0.207*** (0.0463)	-0.230*** (0.0420)	-0.234*** (0.0432)	-0.230*** (0.0465)	-3.753** (1.518)	-5.427*** (1.748)
female	-0.0769*** (0.0149)	-0.0730*** (0.0140)				
Change Nbrhd		-0.100*** (0.0284)	-0.181*** (0.0405)	-0.368*** (0.0685)	-8.821*** (2.588)	-17.61*** (2.731)
Black X Chg Nbrhd		0.418*** (0.130)	0.307*** (0.0849)	0.441*** (0.115)	9.429*** (3.322)	19.42*** (5.213)
FB X Chg Nbrhd		0.0100 (0.0275)	-0.0972** (0.0390)	0.0347 (0.0658)	-4.256** (1.789)	-5.403* (2.858)
Change in Occfnc			-0.00387*** (0.00109)	-0.00199 (0.00217)	-0.0382 (0.0377)	-0.127* (0.0751)
Enters Workforce			0.0928** (0.0408)	0.0832* (0.0481)	0.299 (1.195)	8.290*** (2.068)
Exits Workforce			0.202** (0.0985)	0.141 (0.0962)	-5.100* (2.974)	-5.204 (3.627)
Entry X Occ2nd			-0.00847*** (0.00219)	-0.00941*** (0.00214)	0.0553 (0.0633)	-0.242*** (0.0805)
Exit X Occ1st			-0.00410 (0.00304)	-0.00449 (0.00331)	0.166* (0.0960)	0.129 (0.128)
OCC1st for ChgOcc			-0.00546*** (0.00121)	-0.00354* (0.00194)	0.0108 (0.0480)	0.118* (0.0689)
Missing OCC Both			-0.198 (0.130)	0.0174 (0.218)	2.045 (6.025)	-3.567 (6.744)
Occ2nd for Missing Occ1st			-0.00187** (0.000808)	0.00310*** (0.00105)	-0.0420 (0.0305)	0.0945** (0.0451)
Occ1st for Missing Occ2nd			-0.00763*** (0.00275)	0.00217 (0.00578)	0.151 (0.133)	0.441** (0.190)
Constant	1.815*** (0.106)	1.822*** (0.113)	1.923*** (0.117)	2.525*** (0.181)	9.100** (3.889)	14.16*** (5.228)
Dep. Var.	1940 Soot	1940 Soot	1940 Soot	1940 Soot	Chg Soot Pctile	Chg Soot Pctile
N	415505	415505	44755	13232	44755	13232

Standard errors in parentheses

* $p < 0.10$, ** $p < 0.05$, *** $p < 0.01$

Note: Pollution levels and incomes are expressed in terms of within census standard deviations. Columns 1 and 2 include all individuals in the 1940 census, with changes in neighborhood and/or county being based on the census' 5 year move move variable. Columns 3 and 4 match samples of men from the 1940 census to the 1930 and 1910 censuses respectively. Columns 5 and 6 use the matched samples as well, with the dependent variable being the change in pollution percentile from period 1 to period 2. SEs clustered at the Census division.