

NBER WORKING PAPER SERIES

THE PANDEMIC'S EFFECT ON DEMAND FOR PUBLIC SCHOOLS,
HOMESCHOOLING, AND PRIVATE SCHOOLS

Tareena Musaddiq
Kevin M. Stange
Andrew Bacher-Hicks
Joshua Goodman

Working Paper 29262
<http://www.nber.org/papers/w29262>

NATIONAL BUREAU OF ECONOMIC RESEARCH
1050 Massachusetts Avenue
Cambridge, MA 02138
September 2021

This research used data structured and maintained by the MERI-Michigan Education Data Center (MEDC). MEDC data is modified for analysis purposes using rules governed by MEDC and are not identical to those data collected and maintained by the Michigan Department of Education (MDE) and/or Michigan's Center for Educational Performance and Information (CEPI). Results, information, and opinions solely represent the analysis, information and opinions of the author(s) and are not endorsed by, or reflect the views or positions of, grantors, MDE and CEPI or any employee thereof. We thank Kristen Evans for excellent research assistance. The views expressed herein are those of the authors and do not necessarily reflect the views of the National Bureau of Economic Research.

NBER working papers are circulated for discussion and comment purposes. They have not been peer-reviewed or been subject to the review by the NBER Board of Directors that accompanies official NBER publications.

© 2021 by Tareena Musaddiq, Kevin M. Stange, Andrew Bacher-Hicks, and Joshua Goodman. All rights reserved. Short sections of text, not to exceed two paragraphs, may be quoted without explicit permission provided that full credit, including © notice, is given to the source.

The Pandemic's Effect on Demand for Public Schools, Homeschooling, and Private Schools
Tareena Musaddiq, Kevin M. Stange, Andrew Bacher-Hicks, and Joshua Goodman
NBER Working Paper No. 29262
September 2021
JEL No. I20,I24

ABSTRACT

The Covid-19 pandemic drastically disrupted the functioning of U.S. public schools, potentially changing the relative appeal of alternatives such as homeschooling and private schools. Using longitudinal student-level administrative data from Michigan and nationally representative data from the Census Household Pulse Survey, we show how the pandemic affected families' choices of school sector. We document four central facts. First, public school enrollment declined noticeably in fall 2020, with about 3 percent of Michigan students and 10 percent of kindergartners using other options. Second, most of this was driven by homeschooling rates jumping substantially, driven largely by families with children in elementary school. Third, homeschooling increased more where schools provided in-person instruction while private schooling increased more where instruction was remote, suggesting heterogeneity in parental concerns about children's physical health and instructional quality. Fourth, kindergarten declines were highest among low income and Black families while declines in other grades were highest among higher income and White families, highlighting important heterogeneity by students' existing attachment to public schools. Our results shed light on how families make schooling decisions and imply potential longer-run disruptions to public schools in the form of decreased enrollment and funding, changed composition of the student body, and increased size of the next kindergarten cohort.

Tareena Musaddiq
Gerald R. Ford School of Public Policy
University of Michigan
Weill Hall
735 South State Street
Ann Arbor, MI 48109
tareenam@umich.edu

Kevin M. Stange
Gerald R. Ford School of Public Policy
University of Michigan
5236 Weill Hall
735 South State Street
Ann Arbor, MI 48109
and NBER
kstange@umich.edu

Andrew Bacher-Hicks
Boston University
Wheelock College of Education
2 Silber Way
Boston, MA 02215
abhicks@bu.edu

Joshua Goodman
Boston University
Wheelock College of Education
2 Silber Way
Boston, MA 02215
and NBER
edecjosh@bu.edu

Introduction

A long and active literature has explored parental preferences for school characteristics, such as peer quality and value-added (Abdulkadiroglu et al., 2020; Ainsworth et al., 2020, Campos and Kearns, 2021). Such characteristics are typically stable and well-defined at the time parents make such choices. The Covid-19 pandemic drastically disrupted the functioning of U.S. public schools. By the end of March 2020, all public schools in the U.S. had shifted to remote learning in response to the pandemic and stayed remote until the end of that school year. At the end of that summer, school reopening plans varied tremendously by state and school district, with some students having access to in-person instruction and others having only remote options. In many school districts, the details of those reopening plans were not clear to parents until close to the start of the 2020-2021 school year, and many such plans continued to evolve even once the school year began. The pandemic thus may have substantially altered parents' perceptions of the quality of schooling their children might experience, as well as their perceptions of the physical risk of in-person schooling.

Such disruptions may have changed parental attachment to public schools by affecting the relative appeal of alternatives such as homeschooling and private schools. To date, most research on the educational impacts of the Covid-19 pandemic has centered on its damage to student achievement (Bailey et al., 2021; Chetty et al., 2020; Engzell et al., 2021; Kuhfeld et al., 2020) and the economic implications implied by disrupted learning (Azevedo et al., 2020; Hanushek and Woessmann, 2020). We focus here on the pandemic's effects on parental choices of school sector. Pre-pandemic work has documented determinants of parental demand for private schools (Murnane and Reardon, 2018), charter schools (Walters, 2020), and homeschooling (Houston and Toma, 2003; Bhatt, 2014). Post-pandemic research focusing on school sector choices has used either aggregate district-level data on enrollment totals or self-reported data from a limited age range of students (Dee et al., 2021; Dee and Murphy, 2021; Bassok & Shapiro, 2021; Chatterji and Li, 2021).

We use state administrative data and national survey data to document the extent to which the pandemic altered families' attachment to public schooling. Student-level longitudinal data from Michigan and nationally representative data from the Census Household Pulse Survey let us observe families making other schooling choices, such as homeschooling or private schooling. Michigan's data allow us to follow the universe of public school students over time and observe them leaving for specific alternatives, but only in a single state. Prior work documenting the steep pandemic-related enrollment decline has not followed individual students so cannot distinguish the behavior of new students from those with longer attachment to specific schools. Student-level data also permits comparisons between students attending the same school pre-pandemic. The Census data allow us to generate national estimates, but only for homeschooling and without following individual students over time. Together, the two data sets paint a largely consistent picture of the pandemic's impact on public school enrollment and the appeal of alternatives to public schooling. We document four central facts.

First, public school enrollment declined noticeably in fall 2020. In Michigan, enrollment dropped by 3 percent among K-12 students and 10 percent among kindergartners. This strong age gradient appears in both overall enrollment numbers and among rates of existing public school students leaving for alternatives. Prior to the pandemic, 4 percent of Michigan public elementary schoolers would not re-enroll the following fall. On average, exit rates for such students by more than 50 percent in 2020 and were largest for the youngest students, with the share of kindergartners not returning for 1st grade almost doubling from 4 to nearly 8 percent. The increase in exit rates decreases monotonically by

grade, so much so that more students returned to Michigan public high schools during the pandemic than had in prior years. These overall and age-based patterns in total public school enrollment changes broadly match aggregate data for the nation, where overall enrollment dropped overall by 3 percent, kindergarten enrollment dropped by 13 percent, grade 1-8 enrollment dropped by 3 percent, and high school enrollment increased by 0.4 percent.¹ Ours is the first analysis we are aware of to observe school exit rates based on longitudinal student data, rather than simply compute overall enrollment changes based on aggregate student data.

Second, homeschooling rates jumped substantially in the fall of 2020, driven largely by families with children in elementary school. Movement to homeschooling accounts for the majority of Michigan's students who did not return to the public system, with movement to private schools explaining most of the rest. National data tell a similar story. In February 2020, 4.5 percent of U.S. households with school-aged children reported that at least one child was homeschooled. In fall of 2020, that rate jumped to 7.3 percent. The national data suggests that Michigan's rise in homeschooling rates was very similar to that of the nation. Our national homeschooling estimates are broadly consistent with recent analysis from the U.S. Census Bureau (Eggleston and Fields, 2021), though our analysis is the first to highlight national heterogeneity in homeschooling choice by household income and age.

Third, homeschooling increased more where schools provided in-person instruction, consistent with parents having health concerns or skepticism about remote schooling quality in areas prioritizing in-person instruction. The national data shows a larger increase in homeschooling rates in states where a higher fraction of students was offered in-person schooling. The magnitude of that relationship predicts that, compared to states offering only remote schooling, a state where every student was offered in-person instruction would see a more than doubling of homeschooling rates. Such patterns are even stronger among low-income and Black respondents, perhaps related to larger health toll of the pandemic in such communities. In Michigan, we similarly find that districts providing a fully in-person option saw higher exits for homeschooling than districts offering only remote or hybrid options. The opposite pattern appears for exit rates to private schools, which were larger among districts not offering in-person instruction. That instructional modality differentially affects the relative appeal of different public school alternatives has not been previously observed, even in the most recent and thorough analyses of pandemic-era public school enrollment declines (Dee et al., 2021; Dee & Murphy 2021).

Fourth and finally, we document stark differences in patterns of responses between kindergarten and other grades, particularly among students with existing attachment to the public schools. Kindergarten enrollment declines were concentrated among low income and Black students, while the smaller declines in other grades and for incumbent students were disproportionately among higher income and White students. These patterns highlight important differences in how families make decisions. Black and lower income households appear more responsive along the margin of initial enrollment in school systems while White and higher income families appear relatively more responsive to alternative options once already enrolled in the public school system. This

¹ This is based on preliminary Common Core of Data files from the National Center for Education Statistics, summarized here: <https://ies.ed.gov/blogs/nces/post/new-data-reveal-public-school-enrollment-decreased-3-percent-in-2020-21-school-year>.

socioeconomic pattern by grade has also been seen in Virginia but has not been widely appreciated (Bassok & Shapiro, 2021).

Our results have two broad implications. First, this work sheds light on the dynamics of schooling sector choices. Consistent with the literature on parental preferences under stable school characteristics, we find substantial heterogeneity by race and income when schooling conditions changed due to the pandemic. That low income and Black families were more likely to opt out of in-person instruction in favor of homeschooling during the Covid-19 pandemic is consistent with prior work finding that such families placed more weight on factors beyond academic achievement when making schooling decisions (Hastings et al., 2005). This result adds an additional layer to the accumulating evidence that not only did households have differential exposure to in-person educational options by race and income (Camp & Zamarro, 2020), but that they respond differently even when provided the same options. The learning implications of the shift away from in-person public education will depend on the quality of the alternatives, but emerging evidence of disproportionate economic, health, and social effects of the pandemic on historically disadvantaged communities suggests that there may be a widening of existing achievement gaps in future years.

Second, these findings imply longer-run disruptions to public schools in the form of shifts in cohort size, composition, and school funding. Because kindergarten is optional in many states (including Michigan), the large drops in kindergarten enrollment in 2020-2021 imply that students who decide to re-enter the public school system may choose to enroll in kindergarten or move directly to first grade. If choosing the former, kindergarten cohorts will be larger than normal and serve a wider range of ages than in prior years. If the latter, first grade cohorts will be larger and serve students with more heterogeneity in their incoming educational experiences. These outcomes not only imply shifts in students' incoming educational and social experiences, but also large swings in school funding. While many states made exemptions for the 2021-2022 school year to avoid drops in funding, elementary schools may be over-subscribed for the next several years due to larger-than-expected cohort sizes. Because low income and Black families were most responsive to pandemic-induced changes, swings in funding needs at these hardest hit schools may have particularly important implications for educational equity.

Evidence from Michigan

Data

We use longitudinal, student-level, administrative data from the Michigan Department of Education (MDE) and the Michigan Center for Educational Performance and Information (CEPI). Students are linked longitudinally as long as they stay in the Michigan public school system, including charter schools. The data contain information on student characteristics such as race, ethnicity, gender, eligibility for subsidized meals, school attended and enrollment status. We use data on students enrolled in grades K through 12 from Fall 2014 to Fall 2020. The Fall 2014-19 data allows us to account for any underlying trends in enrollment prior to the Covid-19 pandemic. Michigan public schools served 1.45 million students in grades K-12 at the start of the 2019-2020 school year, of which 67 percent identify as White, 18 percent as Black, 8 percent as Hispanic, and 3 percent as Asian-American. English Language Learners and Special Education students respectively comprise 6 and 14 percent of the population. Almost half (49 percent) are economically disadvantaged, either through direct certification due to participation in government assistance programs (SNAP, TANF, Medicaid),

migrant or homeless status, or through free and reduced price school meal applications based on family's income eligibility.

School districts are required to report information on student enrollment status twice in an academic year, once each in the Fall and the Spring term. For each enrollment count, districts update information on the enrollment status through an “exit code” that categorizes the student as either continuing in the Michigan public school system or, if not, specifying the alternative chosen. Exit codes can include: homeschooling, private schooling, moving out of state, or unknown status. This information is collected in October for all students who appear enrolled at the start of the school year in September. In the fall enrollment data, we can therefore identify the updated enrollment status of students who were “enrolled” at the start of the school year.

We use these exit codes to characterize the enrollment status of all students enrolled in the Michigan public schools in the prior academic year (t-1) as of October of the current year (t). For students on the roster in September of the current year, we group them into one of four categories: continuing in the Michigan public school system, exited the Michigan public school system for homeschool, exited the Michigan public school system for a private school, and exited the Michigan public school system for some other reason. For students who do not appear on the roster in September of the current year, we only know that they have not enrolled, but are unable to characterize their reason for exiting the Michigan school system.²

We combine this data with information on modality of instruction in Michigan schools during the pandemic, available on CEPI's Covid-19 dashboard. The dashboard maintains information on the modality of instruction (in person, hybrid or remote) for public school districts in Michigan for each month of the academic year 2020-2021. Since our analyses uses the Fall enrollment count, we use data on modality of instruction in schools for September 2020, the first full month of the Fall 2020 semester. For our analyses, we categorize school districts into three main categories: (1) “in person” includes districts that were operating fully in person only for all students, and districts that were operating fully in person but provided parents and students the option to receive remote instruction, (2) “remote” includes districts that were only offering remote instruction to all students, and (3) “hybrid” includes districts that were offering part remote and part in person instruction to all students, as well as districts that offered hybrid instruction to some students and fully remote to others. In Fall 2020, over half (54 percent) of the students from the Michigan public school system were enrolled in an in-person district, followed by 27 percent in remote districts and 19 percent in hybrid districts.

Results

Overall public school enrollment in Michigan decreased dramatically following Covid-19 pandemic. Figure 1 plots the average per-grade October enrollment in Michigan public schools since 2014. Before the Covid-19 pandemic, total enrollment had been declining by just under 1,000 students per grade annually, totaling about 11,000 students per year. In 2020, total enrollment dropped by 46,000 students, which is a drop of more than four times the historic trend and represents a 3 percent

² In the years prior to the COVID-19 pandemic, on average, 95.1 percent of students in the Michigan public schools returned the following year, 0.1 percent exited the system for homeschool, 0.1 percent exited the system for private school and 1.2 percent exited for “other” reasons. Students who did not appear on the roster at the start of the school year and whose reason for exit could not be determined were on average 3.5 percent of the Michigan public school population.

decline in total enrollment.³ The drop was highest in kindergarten, which experienced a 10 percent enrollment decline.⁴ Among kindergarten students, enrollment drops were highest among low income and Black students whose enrollment dropped by 11 percent and 19 percent, respectively. In other elementary school grades and middle school grades, enrollment declines in 2020 were more modest at approximately 3 percent, but still substantially higher than in prior years. Enrollment declines in high school grades, on the other hand, were largely in line with prior trends. Overall, these results show that tens of thousands of Michigan families, particularly those with kindergartners, turned to alternatives to the public school sector during Covid-19.

We find overall enrollment drops of 3-4 percent overall in all three modes of instruction, with a slightly higher drop in remote districts compared to in-person and hybrid districts, which is consistent with Dee et al. (2021).⁵ The higher drop in remote districts, however, is largely driven by the substantially higher drop in kindergarten enrollment (15 percent), compared to in-person (10 percent) and hybrid (12 percent) districts. This is consistent with parents' stronger preference to not enroll kindergartners in remote or hybrid schools, compared to in person. For middle and high schools, the drop in enrollment for in-person districts is actually higher than remote districts, previewing the patterns we find when tracking individual students over time.

Enrollment declines could be the result of increases in students leaving the public system or decreases in typical in-flows into Michigan public schools (e.g., from private schools or other states). Because only a small fraction of Michigan students enroll in the public school system prior to kindergarten (e.g., pre-K or transitional kindergarten), the large declines in kindergarten enrollment primarily reflect changes to in-flows at the first possible enrollment point into the public system. In other grades, however, the changes in enrollment are largely driven by exits among students previously enrolled in the prior grade. Figure 2 plots year-over-year public school exit rates by grade before and after the start of the pandemic. Prior to the pandemic, about 4 percent of elementary and middle school children typically did not return to the public school system the following October. This rate nearly doubled for kindergartners when the pandemic hit, with nearly 8 percent not returning for 1st grade. Other elementary grades see large increases in exit rates as well, which largely account for the overall enrollment declines in elementary grades. The magnitude of that change decreases until 8th grade, where exit rates are similar pre- and post-pandemic. Interestingly, more students returned to Michigan public high schools during the pandemic than had in prior years.

For the younger grades, most of the increase in exit rates is attributable to students leaving public schools for homeschooling. The bottom panel of Figure 2 plots year-over-year public school exit rates for those leaving specifically for homeschooling. Prior to the pandemic, only 0.1 percent of students exited for homeschooling, but this rate jumped by 1 to 2 percentage points during the Covid-19 pandemic. Younger students saw the largest increase in homeschool rates. For rising first-graders, exits to homeschooling can account for more than half ($1.9/3.4 = 56$ percent) of the total increase in exit rates. Exits to private school were similarly rare (0.1 percent) prior to the pandemic, but also saw

³ See Table A1 for tabulations of total enrollment in Michigan public schools by year, grade, poverty status, and race.

⁴ The kindergarten drop is an even more sizable (11.3 percent) when Transitional Kindergarten is included, as in Table A1. The Transitional Kindergarten program in Michigan is a state funded program designed for students who just miss the eligibility cutoff for Kindergarten enrollment but would be five years old by December 1st of the academic year. This program has been expanding over the years in terms of both the number of schools that offer it and enrollment. We exclude transitional kindergarten ("TK") students from our main analysis, though results including TK students are nearly identical.

⁵ See Table A2 for total enrollment by year, grade, and modality (in-person, remote or hybrid).

increases for grades below high school.⁶ The private school increase for rising first graders can account for one-seventh ($0.5/3.4 = 15$ percent) of the total increase in exit rates. Current and rising high school students saw very small increases in home or private schooling during the pandemic.

Post-pandemic changes in exit rates among Michigan elementary school students show substantial heterogeneity by race and English language learner status, as well as some heterogeneity by income and school districts' fall 2020 instructional mode. The top panel of Figure 3 shows that elementary schoolers' exit rates increased sharply from 4.1 to 6.4 percent. White students' exit rates nearly doubled from 3.3 to 6.2 percent, while Black and Hispanic students' exit rates each increased by only one percentage point. Asian students' exit rates actually decreased. Non-poor students' exit rates increased by 2.7 percentage points, somewhat more than the 1.9 percentage point rise for poor students. ELL students' exit rates were nearly unchanged. Special education students' exit rates increase only a bit more than those of non-special education students. Finally, exit rates in districts that offered in-person instruction jumped by 2.7 percentage points, more than the 1.9 percentage point increase in fully remote districts. This is consistent with the state-level evidence from the Household Pulse Survey presented below, in that in-person instruction was associated with a larger move away from public schools.

Most of the heterogeneity in exit rate changes is explained by differences in shifts toward homeschooling. The bottom panel of Figure 3 shows the fraction of Michigan elementary schoolers exiting for homeschooling. Pre-pandemic, 0.2 percent of White students typically left Michigan elementary schools for homeschooling. Post-pandemic, that fraction jumps to 2.0 percent. For Hispanic students, the exit rate to homeschooling increases from 0.1 percent to 0.8 percent. Black and Asian students show relatively little change. Districts with in-person instruction see a substantially larger increase in exit to homeschooling (1.7 percentage points) than fully remote districts (0.8 percentage points) or districts offering hybrid instruction (1.1 percentage points). Shifts to private schooling are substantially smaller, though White and non-poor students show the largest such changes.⁷

Strikingly, the observed heterogeneity by race and other factors occurs not just across different school districts but within districts and even within schools. We estimate heterogeneity in post-Covid exit rate changes with regression models that include school fixed effects, allowing us to compare students in the same school.⁸ The patterns are broadly consistent with the uncontrolled estimates shown in Figure 3. White and non-poor students have larger increases in exit rates even when controlling for other characteristics and making comparisons to students within the same school. Homeschooling and private schooling are the largest contributor to this heterogeneity, with other or unknown exit statuses contributing less. Non-white and ELL students experienced much smaller shifts towards these alternative schooling options during the pandemic. Families were less likely to choose homeschooling in districts offering remote or hybrid instruction compared to districts offering in person instruction. On the contrary, families were more likely to opt for private schooling if districts offered remote or hybrid instruction instead of in person instruction. This suggests caution in treating homeschooling and private schooling as equally desirable substitutes for public education.

⁶ See Figure A2 for private school results.

⁷ See Figure A3 for details.

⁸ See Table A3 for details.

National Evidence

Data

To complement our Michigan results, we present national evidence using the Household Pulse Survey (HPS) from the U.S. Census. The HPS was designed to quickly collect and disseminate data on how U.S. households were impacted by Covid. The survey began in April 2020 and has continued through the present, with results being released on a rolling basis in nearly real-time. We use the HPS to examine trends in homeschooling rates, as the HPS asks each household with school-age children whether any of those children are being homeschooled, as opposed to attending a public or private school (which are not distinguished). Respondents in early waves were asked about pre-pandemic homeschooling status as of February 2020, while those in later waves were asked about current homeschooling status. While the HPS only allows for the analysis of one alternative to the public-school sector, it has the advantage of providing a nationally representative picture of the changes in demand for homeschooling during the pandemic.

Pre-pandemic household homeschooling rates estimated from the HPS are consistent with administrative data on student-level homeschooling rates.⁹ The fraction of U.S. students being homeschooled as of 2018 was just below 4 percent, while HPS places the fraction of households with at least one homeschooled student at about 4.5 percent. These are both close in magnitude and directionally consistent, given that household-level rates of homeschooling should mechanically be higher than student-level rates because some households homeschool some but not all of their children. State-level estimates of homeschooling rates from the HPS match fairly well to administrative data from those states. States that administratively report homeschooling being more common have higher fractions of respondents reporting homeschooling in the HPS, with a correlation of just over 0.5 between the HPS and such administrative data. The HPS thus seems to measure fairly accurately the state of pre-pandemic homeschooling.

We combine the HPS data with national data on school instructional modes in the 2020-2021 school year to examine the link between in-person schooling and homeschooling rates. The in-person schooling data comes from Burbio, a private company that began systematically collecting information about school districts' learning modes during the pandemic. Every three days, Burbio collected for over 1,200 school districts publicly available data on the district's learning mode from sources such as district websites and Facebook posts. Burbio then generated weekly measures by county of the fraction of grades in each school district following an in-person, hybrid, or virtual learning mode. We aggregate these measures to the state level to connect with state-level measures of homeschooling rates from the HPS.

Results

National homeschooling rates increased dramatically in response to the pandemic. Figure 4 shows the percentage of U.S. households with school-aged children who have at least one student being homeschooled. The blue bars show the percentage based on February 2020, which provide a measure of baseline homeschooling rates, while the red bars present the homeschooling rates for the fall of 2020. In February 2020, 4.5 percent of U.S. households with school-aged children reported that at least one child was homeschooled. This rate jumped to 7.3 percent in the fall of 2020. Because

⁹ See Figure A4 for details.

homeschooling rates over the past decade have largely been constant (Eggleston and Fields, 2021; Wang, Rathbun, & Musu, 2019), this sudden change in response to Covid represents a substantial departure from recent trends. The rightmost set of bars includes only the responses to the HPS from Michigan households and shows that Michigan appears quite similar to the U.S. in terms of homeschooling. This strengthens our argument that the previously discussed results from Michigan's administrative are likely broadly in line with national trends.

The national increase in homeschooling rates shows substantial heterogeneity by race, income and age. Black household homeschooling rates nearly triple by increasing 6.1 percentage points, compared to increases of 2.1-2.5 percentage points among White, Hispanic and Asian households. Among households earning below \$50,000, homeschooling rates more than double by increasing 7.5 percentage points, compared to a 2.5 percentage point increase for households earning \$100,000 or more. This concentrated shift among low-income and Black families may be driven—at least in part—due to the disproportionate impact of the pandemic on historically disadvantaged populations (Thakur et al., 2020). Though HPS does not record children's ages, we can infer them from the age of the respondent. Consistent with our Michigan results, the households with the youngest respondents and thus on average the youngest children also show the largest shift toward homeschooling. Households headed by those 40 and under show a 3.6 percentage point increase in homeschooling rates, while those headed by respondents over 45 show a 2.1 percentage point increase.

While nearly every school across the country closed March 2020, there was substantial heterogeneity across states in schooling re-openings by the fall. States in the southeastern United States pushed to quickly re-open schools for in-person learning, while many other states across the country remained fully remote. These differences in learning modality affect the tradeoffs in households' choices between homeschooling and enrolling in the public-school system. For example, in areas where in-person instruction resumed, parents had to weigh the health costs of potential Covid exposure with the educational benefits of in-person learning.

Homeschooling rates rose more in states where more students were offered in-person or hybrid learning in fall 2020. Figure 5 presents the state-level relationship between changes in household homeschooling rates between February and fall 2020 and the fraction of students offered in-person or hybrid learning in the fall of 2020, as measured by the Burbio data. There is a distinctly positive and statistically significant relationship between these variables. On average, the predicted difference in homeschooling is 2.4 percentage points higher, or more than twice as high, in states that offered every student in-person instruction relative to states that remained fully remote. These patterns are particularly strong among low-income and Black households.¹⁰ Overall, this suggests that the added benefit of in-person instruction was not enough to outweigh the costs of returning to in-person learning amidst a pandemic, particularly among communities where health risks may have been greater.

Conclusion

By combining detailed student-level administrative data from Michigan with national survey data, we provide new insights into the determinants of families' education sector choices during the pandemic. At a high level, our main results are in line with a growing set of reports that the pandemic caused an unprecedented shift away from the public education sector, particularly for Black, low-income and kindergarten students (Bassok & Shapiro, 2021; Dee et. al., 2021, Dee & Murphy, 2021).

¹⁰ See Figures A4 and A5.

Our analysis also uncovers important, previously undocumented heterogeneity as families chose among two key alternatives to the public school sector: homeschooling and private schooling. Shifts to both of these alternative sectors increased substantially during the pandemic, though homeschooling rates disproportionately increased in districts that provided in-person instruction. Private schooling, on the other hand, increased more in districts offering remote instruction. The choice between in-person and remote schooling was among the most controversial decisions policymakers faced during the pandemic, and these divergent patterns highlight how either learning modality was likely to motivate a shift of substantial numbers of would-be public sector students to alternative educational sectors. We also document important heterogeneity along the margin of initial school enrollment in kindergarten compared to continued enrollment in older grades. Low income and Black families were relatively less likely to enroll their children in kindergarten than other groups, but higher income and White students were more likely to exit the public system in favor of alternatives. These results add important nuance to our understanding of the determinants of education sector preferences during the pandemic and contribute a unique perspective to prior work showing heterogeneous schooling preferences by race and income when school characteristics are stable (Hastings et al., 2005).

These enrollment changes have important short- and long-term implications. In the short term, policymakers and public school administrators have been fiercely debating the costs and benefits of in-person schooling. At the time of writing, policymakers are grappling with these decisions for the 2021-2022 school year amid concerns over the spread of the Delta variant of Covid-19. These results suggest that either decision—whether it be to hold remote, hybrid, or in-person instruction—will likely cause substantial continued disengagement from the public education system for some set of families.

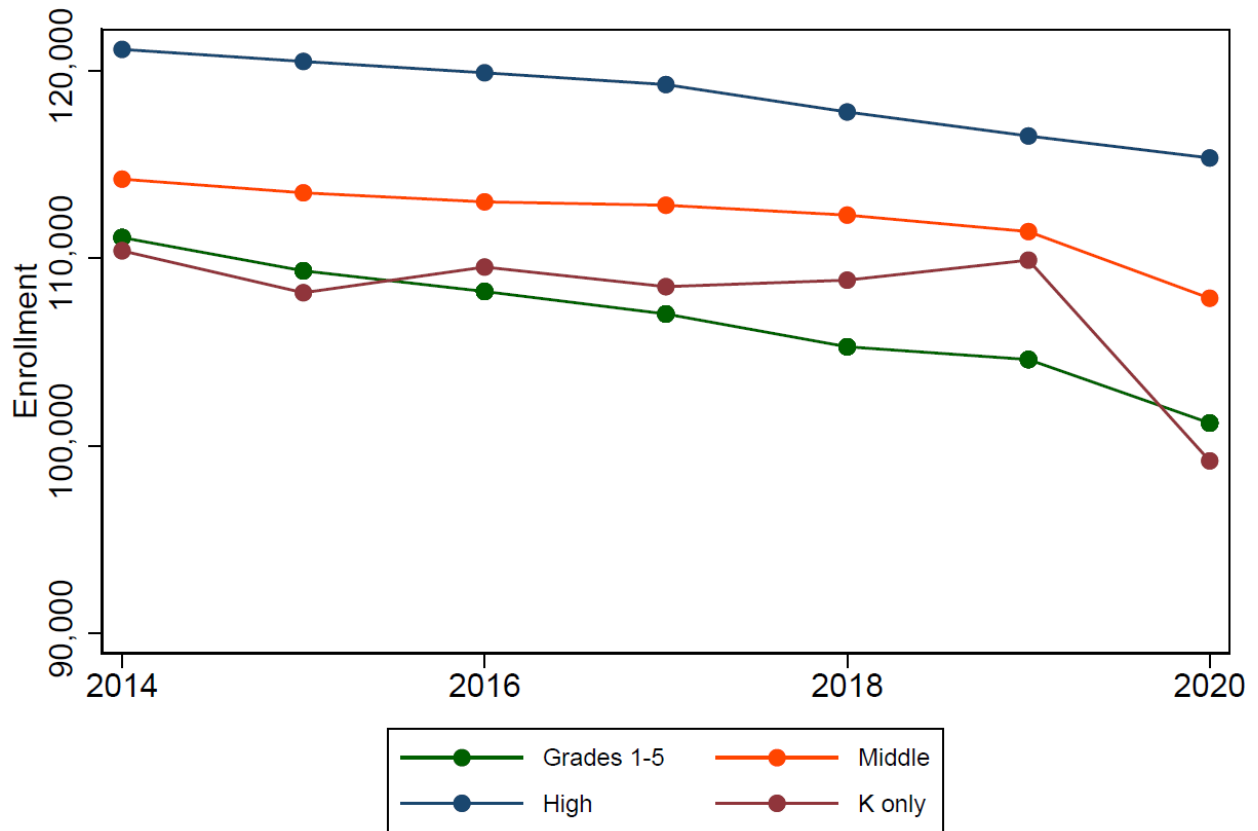
These enrollment changes also have clear longer-term fiscal implications for the public school sector and educational consequences for students. To the extent that a large percentage of students remain enrolled in alternative sectors, public school systems will face unprecedented drops in funding. Because these enrollment drops are concentrated among elementary schools serving low-income and Black students, these funding challenges will present additional consequences for equity. To the extent that students largely re-enroll in the public sector, there will be lingering implications for learning and development, driven by large shifts in cohort size, composition, and students' educational preparation. For instance, students who skip kindergarten due the pandemic and enroll directly in first grade will be the same age as their peers who enrolled in kindergarten at the traditional age, but will have had greater heterogeneity in their educational and social development. Students who delay enrollment in kindergarten, on the other hand, will be older than their peers. In addition to the developmental and pedagogical implications for managing a larger than usual and mixed age set of students, these decisions come with fiscal and organizational challenges for public schools, including staffing challenges. Because the largest shifts have occurred among lower-income and Black students, these shifts highlight the importance of attending to these challenges for educational equity.

References

- Abdulkadiroğlu, A., Pathak, P. A., Schellenberg, J., & Walters, C. R. (2020). Do parents value school effectiveness? *American Economic Review*, 110(5), 1502-39.
- Ainsworth, R., Dehejia, R., Pop-Eleches, C., & Urquiola, M. (2020). Information, preferences, and household demand for school value added. National Bureau of Economic Research Working Paper 28267.
- Azevedo, J. P., A. Hasan, K. Geven, D. Goldemberg, and S. A. Iqbal (2020). Learning losses due to Covid-19 could add up to \$10 trillion. Brookings Institution.
- Bailey, D. H., G. J. Duncan, R. J. Murnane, and N. Au Yeung (2021). Achievement gaps in the wake of Covid-19. *Educational Researcher*.
- Bassok, D. & A. Shapiro. (2021). Understanding COVID-19-era enrollment drops among early-grade public school students. Brown Center Chalkboard. Retrieved August 13, 2021 from <https://www.brookings.edu/blog/brown-center-chalkboard/2021/02/22/understanding-covid-19-era-enrollment-drops-among-early-grade-public-school-students/>
- Bhatt, R. (2014). Home is where the school is: The impact of homeschool legislation on school choice. *Journal of school choice*, 8(2), 192-212.
- Camp, A., & Zamarro, G. (2021). Determinants of Ethnic Differences in School Modality Choices during the COVID-19 Crisis. Annenberg Institute for School Reform at Brown University. EdWorkingPaper No. 21-374.
- Campos, C., & Kearns, C. (2021). The Impacts of Neighborhood School Choice: Evidence from Los Angeles' Zones of Choice. *SSRN 3830628*.
- Chatterji, P., & Li, Y. (2021). Effects of COVID-19 on school enrollment. *Economics of Education Review*, 83.
- Chetty, R., J. N. Friedman, N. Hendren, and M. Stepner (2020). Real-time economics: A new platform to track the impacts of COVID-19 on people, businesses, and communities using private sector data. NBER Working Paper 27431.
- Dee, T.S., Huffaker, E., Philips, C., & Sagara, E. (2021). The Revealed Preferences for School Reopening: Evidence from Public-School Disenrollment. CEPA Working Paper No. 21.06.
- Dee, T.S. & Murphy, M. (2021). Patterns in the Pandemic Decline of Public School Enrollment. *Educational Researcher*.
- Eggleston, C. & Fields, J. (2021). "Census Bureau's Household Pulse Survey Shows Significant Increase in Homeschooling Rates in Fall 2020," U.S. Census Bureau.
- Engzell, P., A. Frey, and M. D. Verhagen (2021). Learning loss due to school closures during the Covid-19 pandemic. *Proceedings of the National Academy of Sciences* 118(17).
- Hanushek, E. A. and L. Woessmann (2020). The economic impacts of learning losses.
- Hastings, J.S., Kane, T.J. and Staiger, D.O. (2005). Parental preferences and school competition: Evidence from a public school choice program. National Bureau of Economic Research Working Paper 11805.
- Houston Jr, R. G., & Toma, E. F. (2003). Home schooling: An alternative school choice. *Southern Economic Journal*, 920-935.

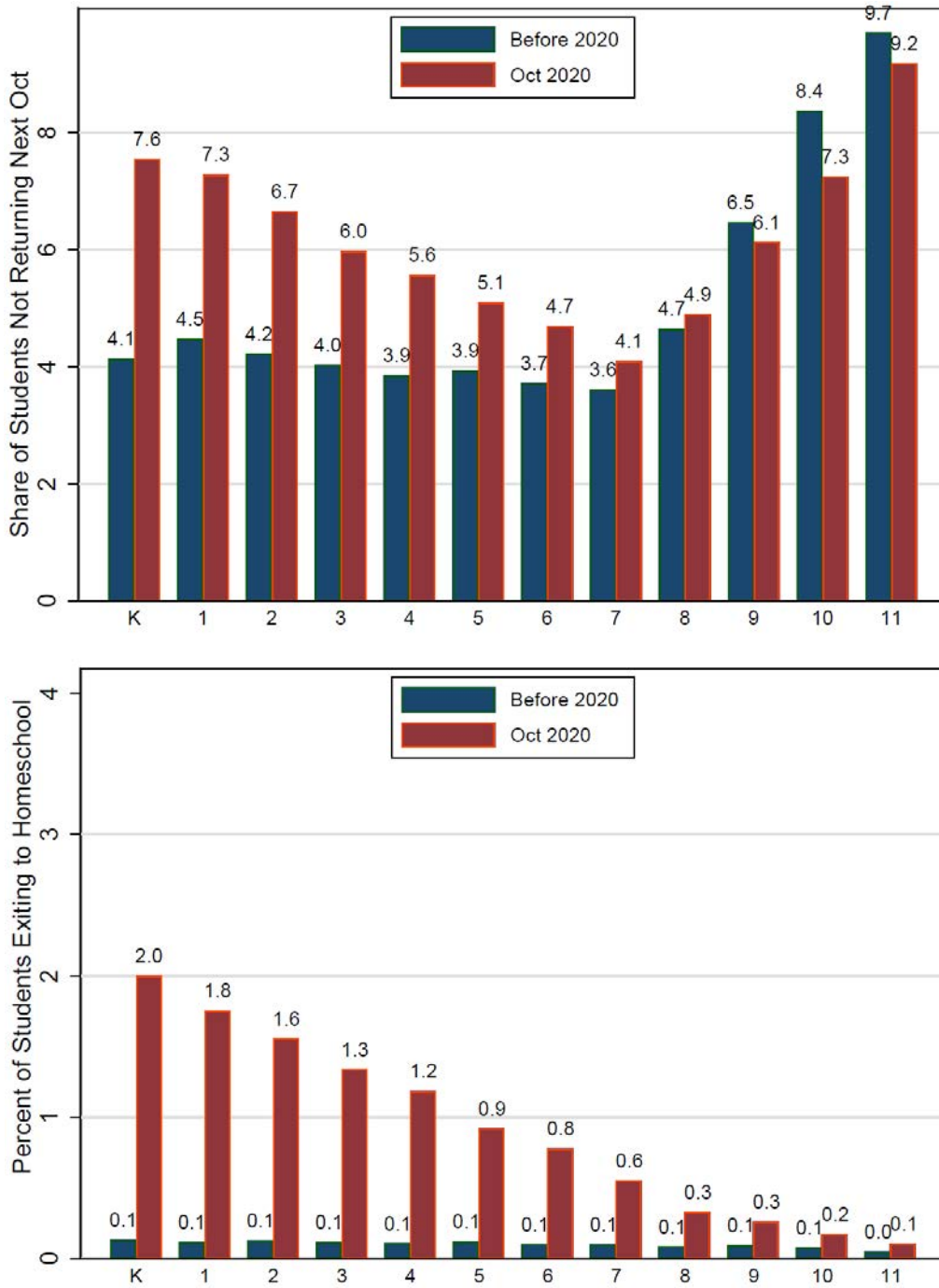
- Kuhfeld, M., J. Soland, B. Tarasawa, A. Johnson, E. Ruzek, and J. Liu (2020). Projecting the potential impacts of COVID-19 school closures on academic achievement. Annenberg Institute Working Paper 20-226.
- Murnane, R. J., & Reardon, S. F. (2018). Long-term trends in private school enrollments by family income. *AERA Open*, 4(1).
- Thakur, N., Lovinsky-Desir, S., Bime, C., Wisnivesky, J. P., & Celedón, J. C. (2020). The Structural and Social Determinants of the Racial/Ethnic Disparities in the US COVID-19 Pandemic. What's Our Role?. *American journal of respiratory and critical care medicine*, 202(7), 943-949.
- Walters, C. R. (2018). The demand for effective charter schools. *Journal of Political Economy*, 126(6), 2179-2223.
- Wang, K., Rathbun, A., and Musu, L. (2019). School Choice in the United States: 2019 (NCES 2019-106). U.S. Department of Education. Washington, DC: National Center for Education Statistics.

Figure 1
October Enrollment Per Grade in Michigan Public Schools



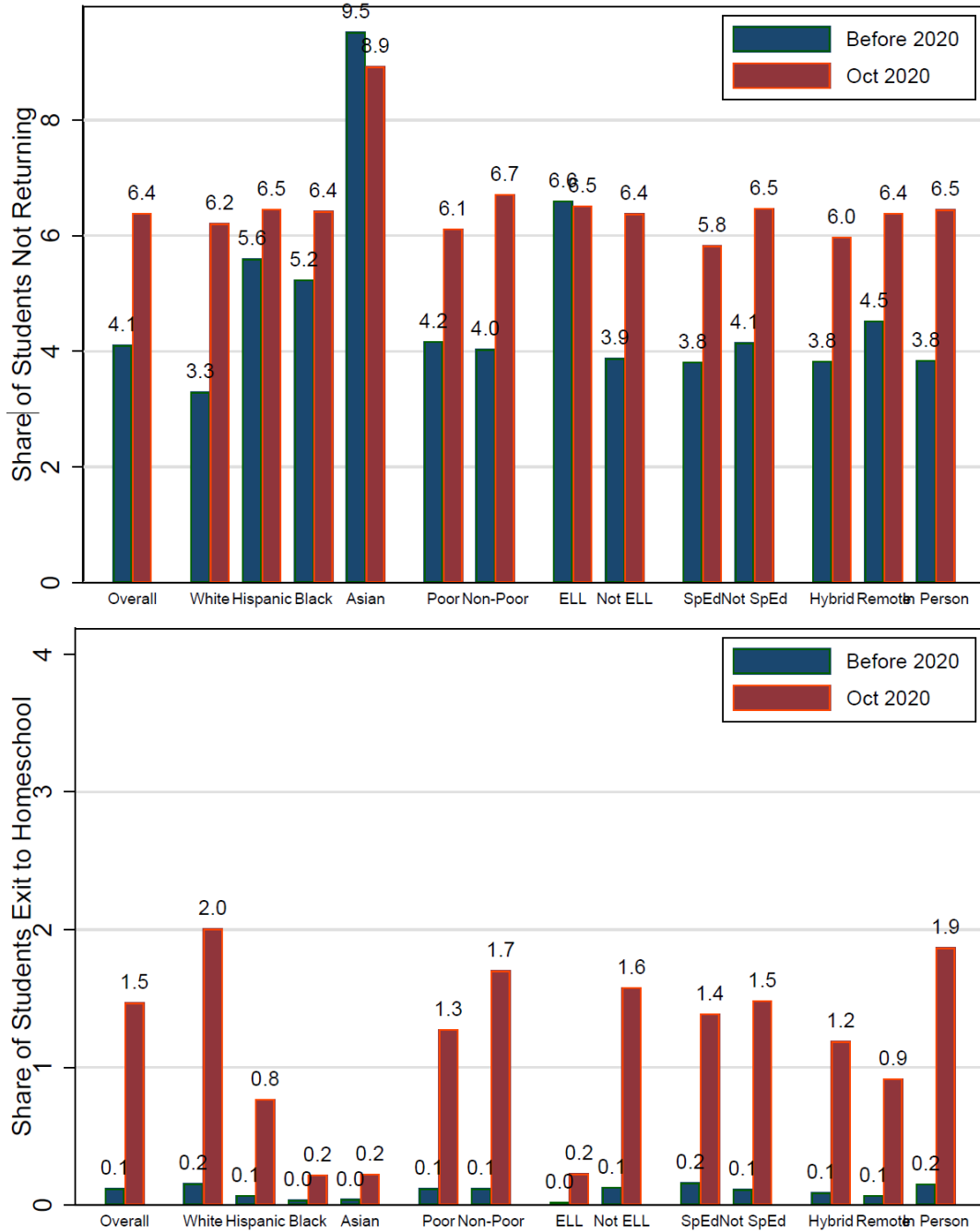
Notes: Grades 1-5 is the total enrollment in these grades divided by 5. “Middle” is enrollment in grades 6-8 divided by 3. “High” is enrollment in grades 9-12 divided by 4. K is enrollment in kindergarten, excluding transitional kindergarten and early childhood education. Source: Authors’ analysis of student-level data from State of Michigan.

Figure 2
Exit Rate from Michigan Public Schools by Grade



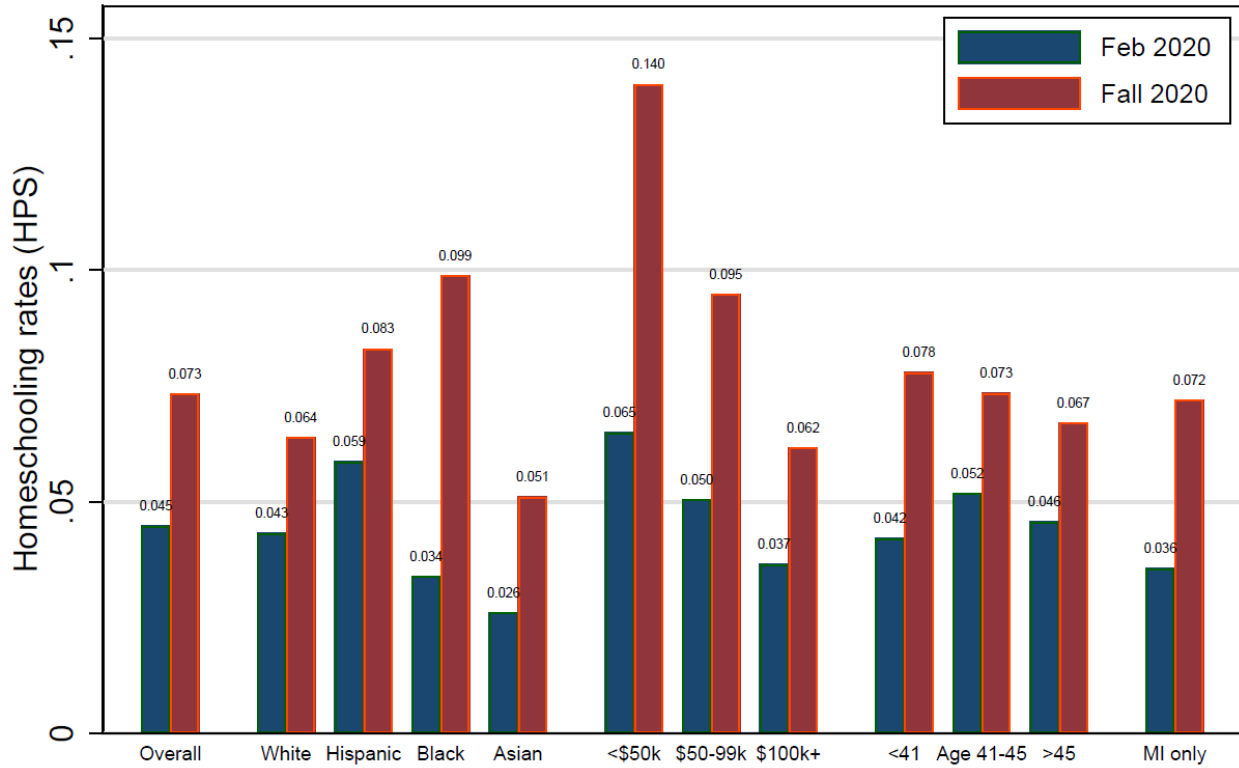
Notes: Figure plots the share of students that were enrolled in a Michigan public school in October that were not enrolled in a Michigan public school the following October (top panel) and for whom the exit status was marked as “homeschool” (bottom panel). Grade refers to base year. Sample include all K-11 students enrolled in Michigan public schools Fall 2014 to 2019, excluding students in transitional kindergarten and early childhood education.

Figure 3
Heterogeneity in Elementary Students' Exit Rate from Michigan Public Schools



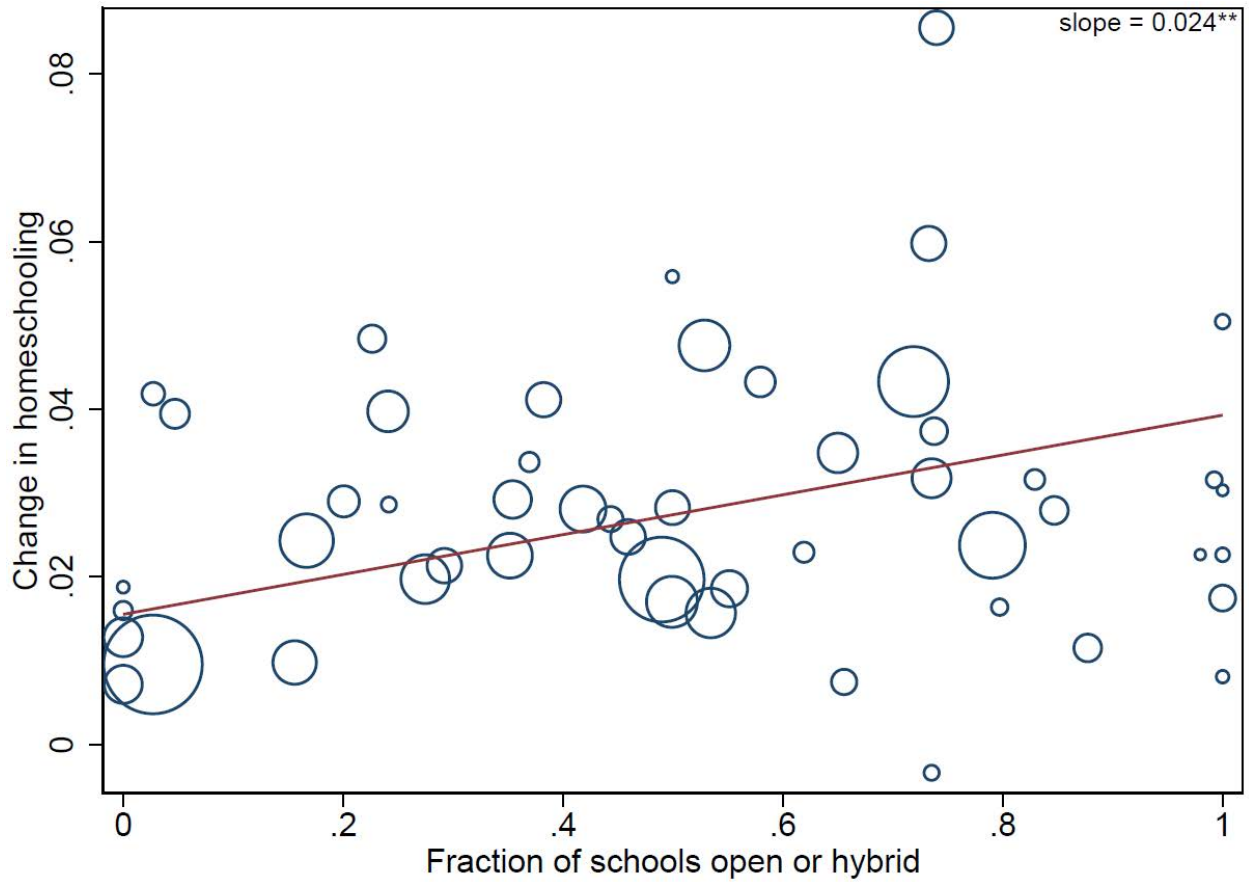
Notes: Figure plots the share of students that were enrolled in a Michigan public school in October that were not enrolled in a Michigan public school the following October (top panel) and for whom the exit status was marked as “homeschool” (bottom panel). Sample include all elementary students enrolled in Michigan public schools Fall 2014 to 2019, excluding students in transitional kindergarten and early childhood education.

Figure 4
Nationwide Changes in Household Rates of Homeschooling



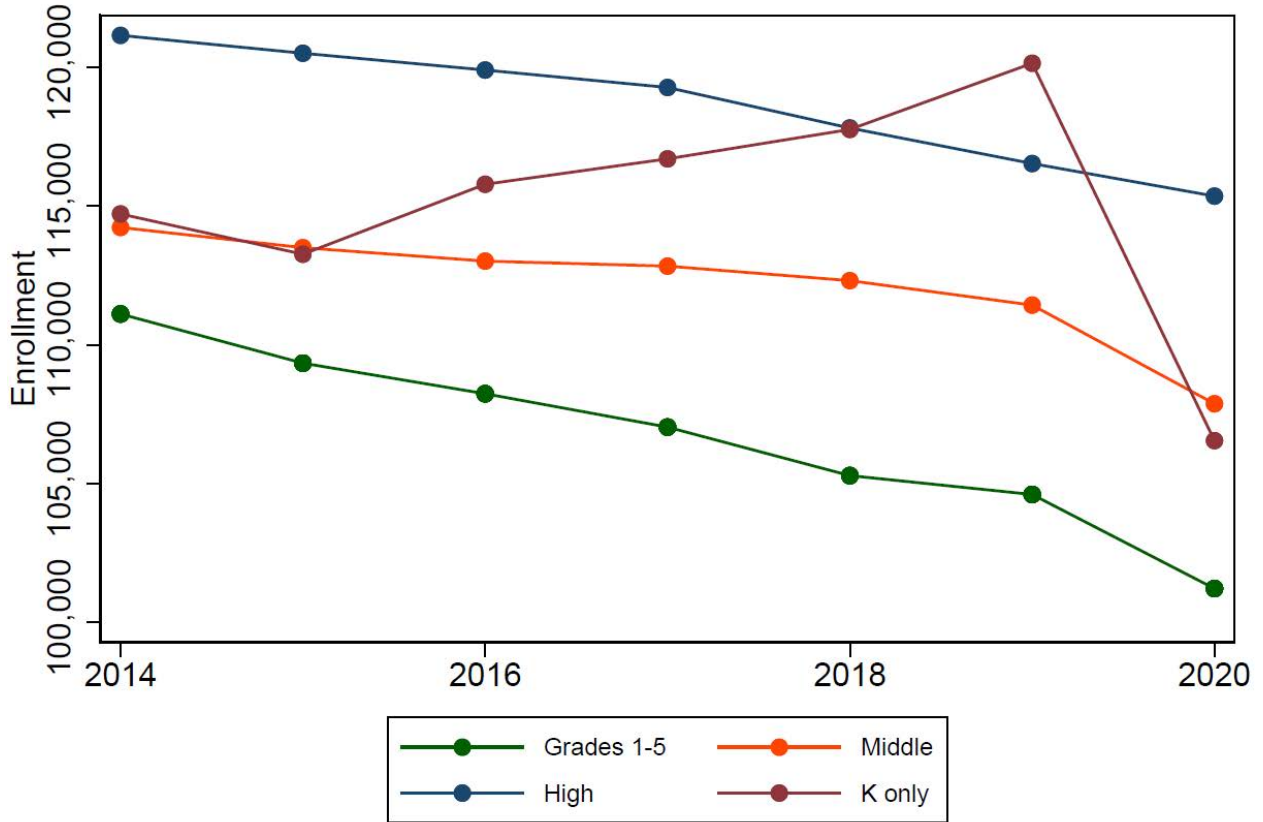
Notes: Homeschooling data come from the U.S. Census, Household Pulse Survey. The change in homeschooling compares the fall homeschooling rates (September through October 2020) to pre-pandemic rates (February 2020), weighted by population. Homeschooling rates are defined as the fraction of households with school-aged children who are homeschooling at least one of those children.

Figure 5
State-Level Homeschooling Rate Changes by Fall 2020 Learning Modality



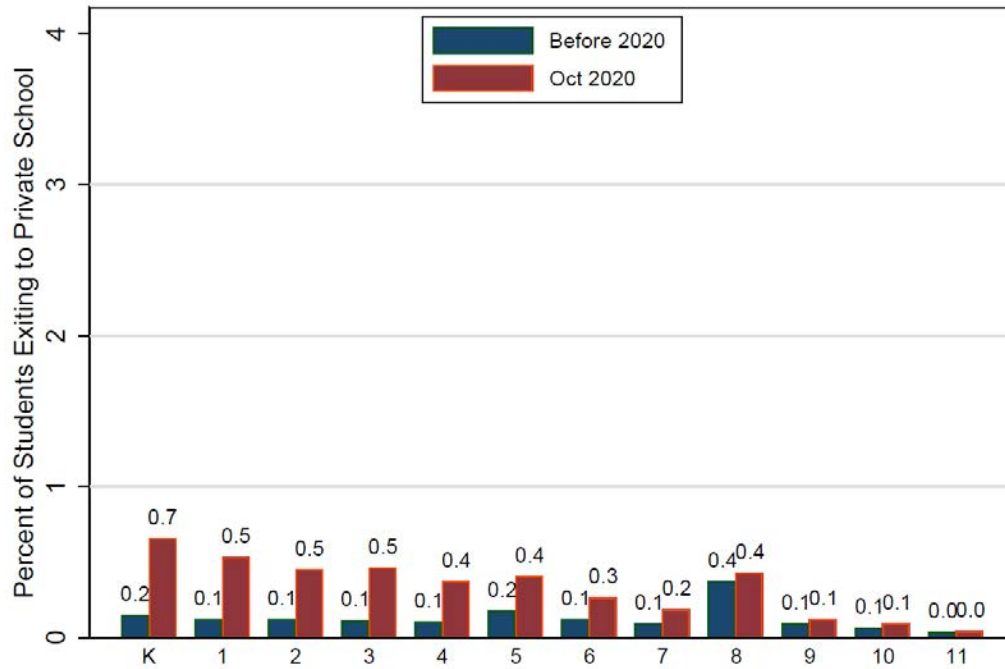
Notes: Homeschooling data come from the U.S. Census, Household Pulse Survey. The change in homeschooling compares the fall homeschooling rates (September through October 2020) to pre-pandemic rates (February 2020). Homeschooling rates are defined as the fraction of households with school-aged children who are homeschooling at least one of those children. School re-opening status comes from Burbio and is defined as of September 2020. Each state is weighted by population. * $p < 0.05$, ** $p < 0.01$, *** $p < 0.001$

Figure A1
October Enrollment Per Grade in Michigan Public Schools, With Transitional Kindergarten



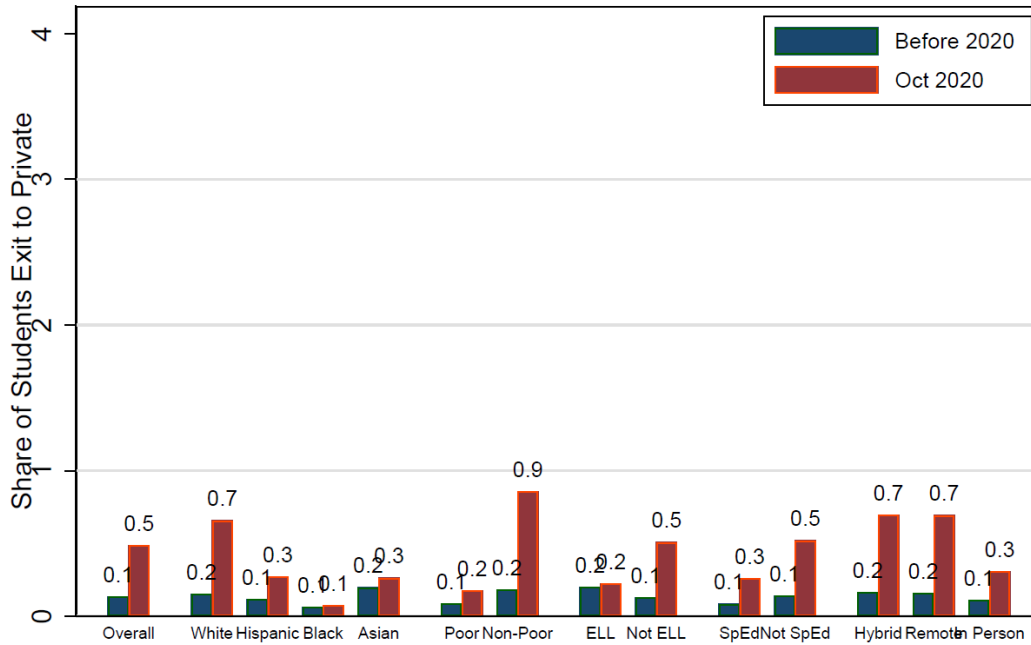
Notes: “Grades 1-5” is the total enrollment in these grades divided by 5. “Middle” is enrollment in grades 6-8 divided by 3. “High” is enrollment in grades 9-12 divided by 4. K is enrollment in K and TK. Notes: Grades 1-5 is the total enrollment in these grades divided by 5. “Middle” is enrollment in grades 6-8 divided by 3. “High” is enrollment in grades 9-12 divided by 4. K is enrollment in kindergarten or transitional kindergarten.

Figure A2
Exit Rate to Private School



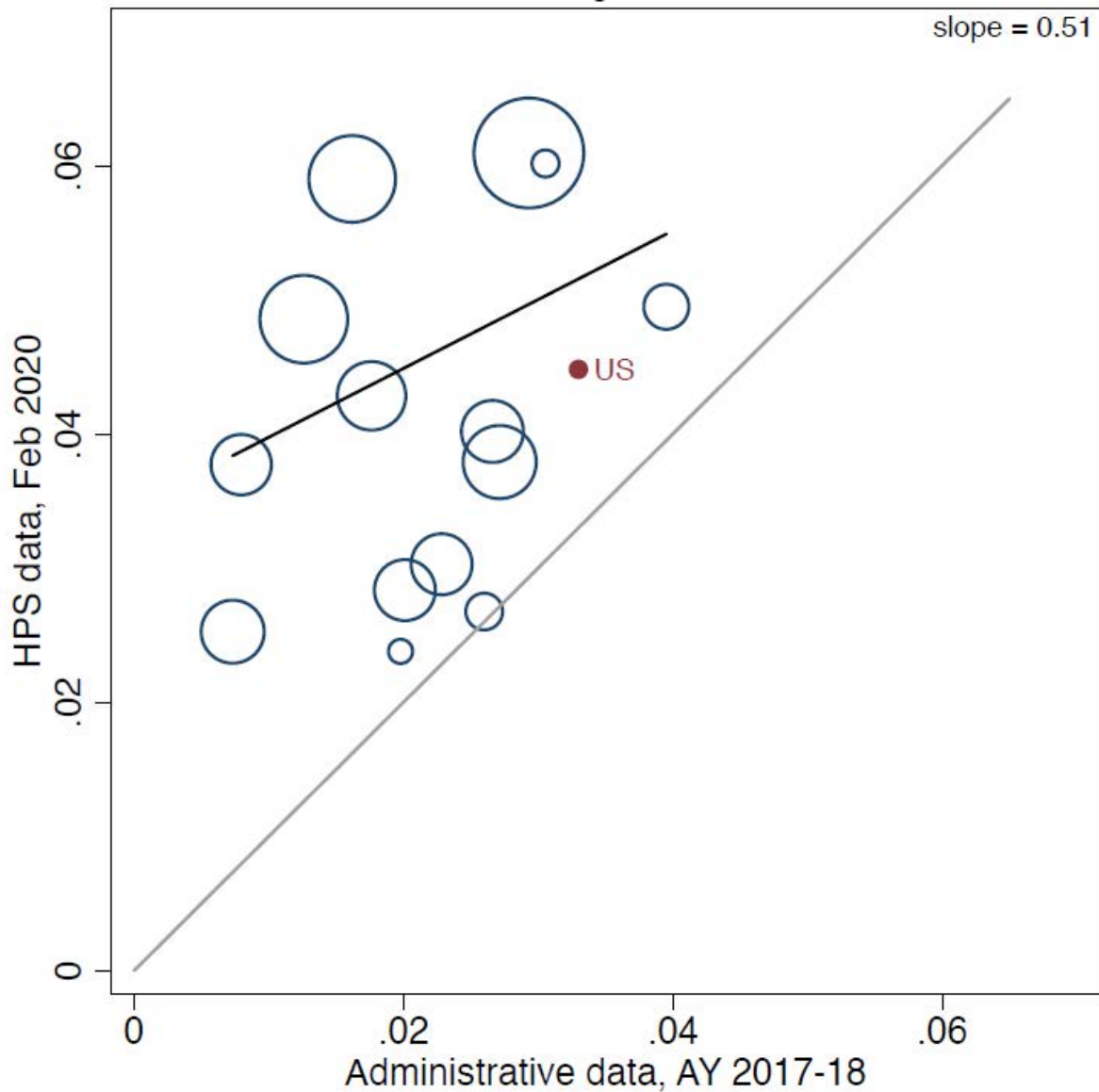
Notes: Figure plots the share of students that were enrolled in a Michigan public school in October that were not enrolled in a Michigan public school the following October and for whom the exit status was marked as “non-public school”. Grade refers to base year. Sample include all K-11 students enrolled in Michigan public schools Fall 2014 to 2019, excluding students in transitional kindergarten and early childhood education.

Figure A3
Heterogeneity in Elementary Students' Exit Rate to Private School



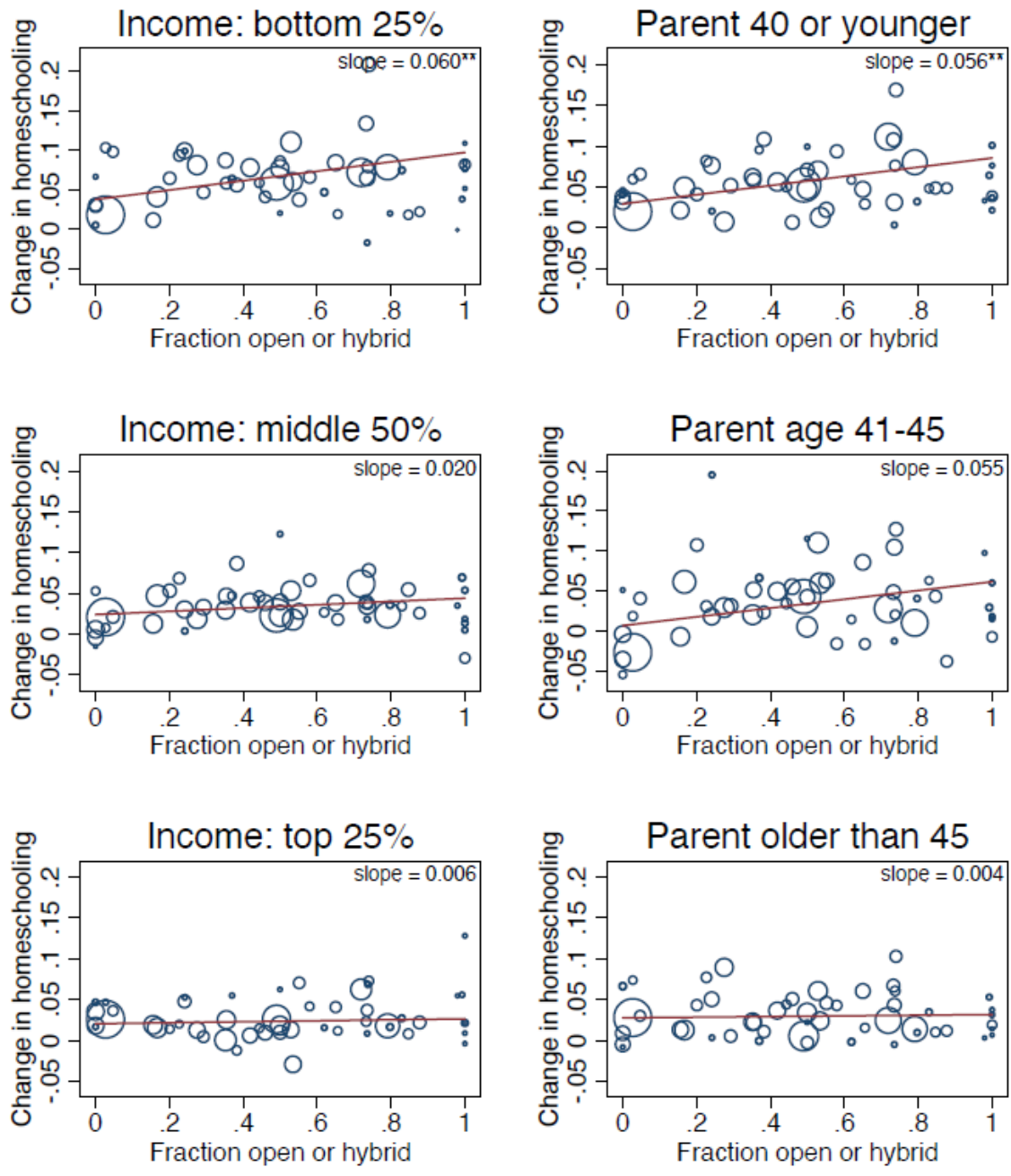
Notes: Figure plots the share of students that were enrolled in a Michigan public school in October that were not enrolled in a Michigan public school the following October and for whom the exit status was marked as “non-public school”. Sample include all elementary students enrolled in Michigan public schools Fall 2014 to 2019, excluding students in transitional kindergarten and early childhood education.

Figure A4
Comparison of State-Level Homeschooling Rates: HPS vs. Administrative Data



Notes: HPS data come from the U.S. Census, Household Pulse Survey and are based on pre-pandemic household homeschooling rates (February 2020). Administrative Data come from the 2017-18 school year and reflect student-level homeschooling rates published by each state. States are weighted by their population.

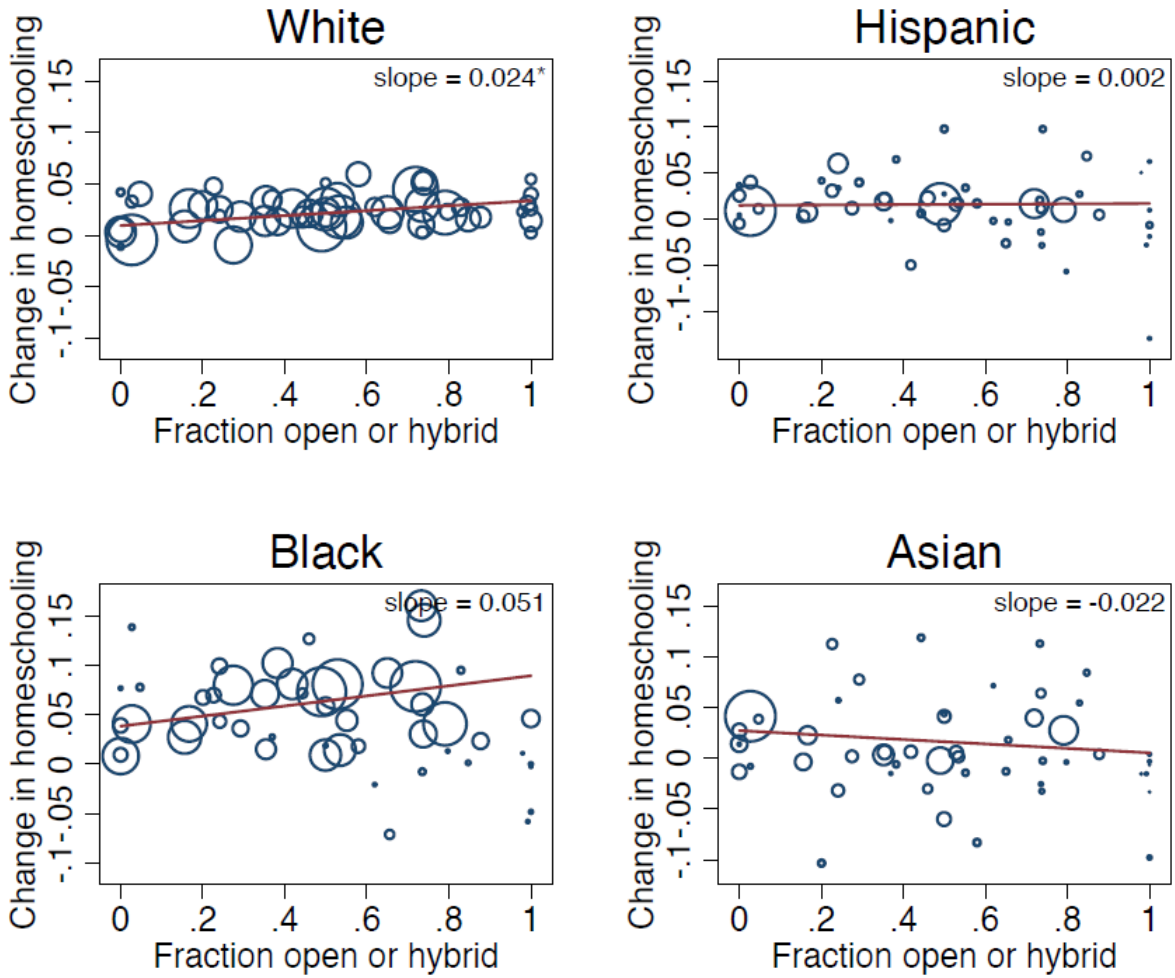
Figure A5
Heterogeneity in State-Level Homeschooling Rate Changes by Fall 2020 Learning Modality



Notes: Homeschooling data come from the U.S. Census, Household Pulse Survey. The change in homeschooling compares the fall homeschooling rates (September through October 2020) to pre-pandemic rates (February 2020). School re-opening status comes from Burbio and is defined as of September 2020. Each state is weighted by population.

* $p < 0.05$, ** $p < 0.01$, *** $p < 0.001$

Figure A6
Changes in States' Homeschooling Rates, by Fall 2020 Learning Modality and Household Race/Ethnicity



Notes: Homeschooling data come from the U.S. Census, Household Pulse Survey. The change in homeschooling compares the fall homeschooling rates (September through October 2020) to pre-pandemic rates (February 2020). School re-opening status comes from Burbio and is defined as of September 2020. Each state is weighted by population.

* $p < 0.05$, ** $p < 0.01$, *** $p < 0.001$

Table A1
Total Enrollment at Michigan Public Schools by Year, Grade, Poverty and Race

	2017	2018	2019	2020	2021	2020-21 Change	
						Number	Percent
Total	1,475,570	1,467,424	1,452,331	1,443,553	1,397,670	-45,883	-3.2%
Kindergarten	115,780	116,696	117,755	120,138	106,546	-13,592	-11.3%
Grades 1-5	541,175	535,169	526,431	523,028	506,086	-16,942	-3.2%
Middle	339,037	338,495	336,925	334,283	323,622	-10,661	-3.2%
High	479,578	477,064	471,220	466,104	461,416	-4,688	-1.0%
Poor							
Total	678,144	740,011	728,409	730,832	707,986	-22,846	-3.1%
Kindergarten	55,001	59,867	60,054	60,631	53,751	-6,880	-11.3%
Grades 1-5	274,484	292,958	286,550	285,695	276,695	-9,000	-3.2%
Middle	155,426	169,960	169,714	170,624	166,084	-4,540	-2.7%
High	191,018	213,576	208,162	209,330	208,650	-680	-0.3%
Non-Poor							
Total	797,426	727,413	723,922	712,721	689,684	-23,037	-3.2%
Kindergarten	54,536	48,624	48,786	49,273	45,451	-3,822	-7.8%
Grades 1-5	266,691	242,211	239,881	237,333	229,391	-7,942	-3.3%
Middle	183,611	168,535	167,211	163,659	157,538	-6,121	-3.7%
High	288,560	263,488	263,058	256,774	252,766	-4,008	-1.6%
Black							
Total	262,042	260,342	256,163	255,107	246,473	-8,634	-3.4%
Kindergarten	20,502	20,184	20,669	20,848	16,888	-3,960	-19.0%
Grades 1-5	100,396	99,973	98,666	98,597	95,517	-3,080	-3.1%
Middle	58,498	58,907	58,853	58,599	57,529	-1,070	-1.8%
High	82,646	81,278	77,975	77,063	76,539	-524	-0.7%
White							
Total	987,176	975,019	958,806	946,294	909,381	-36,913	-3.9%
Kindergarten	75,682	76,411	76,526	78,079	70,221	-7,858	-10.1%
Grades 1-5	351,335	344,660	336,738	332,399	318,579	-13,820	-4.2%
Middle	228,590	226,145	222,620	219,266	210,035	-9,231	-4.2%
High	331,569	327,803	322,922	316,550	310,546	-6,004	-1.9%
Hispanic							
Total	112,578	114,615	116,421	118,108	117,526	-582	-0.5%
Kindergarten	9,609	9,565	9,653	9,756	8,928	-828	-8.5%
Grades 1-5	44,148	44,354	43,957	43,960	43,419	-541	-1.2%
Middle	26,400	26,915	27,907	28,142	27,820	-322	-1.1%
High	32,421	33,781	34,904	36,250	37,359	1,109	3.1%
Asian							
Total	48,533	49,747	50,347	50,602	49,698	-904	-1.8%
Kindergarten	3,678	3,894	4,062	4,025	3,825	-200	-5.0%
Grades 1-5	18,047	18,313	18,453	18,768	18,659	-109	-0.6%
Middle	11,335	11,309	11,323	11,236	11,088	-148	-1.3%
High	15,473	16,231	16,509	16,573	16,126	-447	-2.7%

Notes: Kindergarten enrollment includes Transitional Kindergarten.

Table A2

Total Enrollment at Michigan Public Schools by Modality of Instruction in Fall 2020

	2017	2018	2019	2020	2021	2020-21 Change	
						Number	Percent
In Person							
Total	766,322	768,304	762,506	759,578	734,569	-25,009	-3.29%
Kindergarten	60,649	62,124	63,018	64,055	57,827	-6,228	-9.72%
Grades 1-5	276,980	276,301	272,823	272,791	263,434	-9,357	-3.43%
Middle	175,604	176,129	175,961	174,999	168,320	-6,679	-3.82%
High	253,089	253,750	250,704	247,733	244,988	-2,745	-1.11%
Remote							
Total	394,411	393,927	389,277	386,199	372,316	-13,883	-3.59%
Kindergarten	30,675	30,757	31,023	31,660	26,922	-4,738	-14.97%
Grades 1-5	147,790	147,256	145,130	143,914	138,416	-5,498	-3.82%
Middle	90,764	91,343	90,654	89,607	87,172	-2,435	-2.72%
High	125,182	124,571	122,470	121,018	119,806	-1,212	-1.00%
Hybrid							
Total	277,602	275,340	271,389	269,343	260,176	-9,167	-3.40%
Kindergarten	22,177	22,274	22,371	23,218	20,462	-2,756	-11.87%
Grades 1-5	104,300	102,915	100,670	99,460	96,126	-3,334	-3.35%
Middle	64,535	64,199	63,458	63,193	61,149	-2,044	-3.23%
High	86,590	85,952	84,890	83,472	82,439	-1,033	-1.24%

Notes: “In person” includes districts that were operating fully in person only for all students, and districts that were operating fully in person but provided parents and students the option to receive remote instruction. “Remote” includes districts that were only offering remote instruction to all students. “Hybrid” includes districts that were offering part remote and part in person instruction to all students, as well as districts that offered hybrid instruction to some students and fully remote to others. The overall enrollment numbers are slightly lower than the total enrollment in MI public schools in Table A1. This is because data on modality of instruction was not available for a some districts. These districts enrolled less than 2% of the MI public school students.

Table A3
Heterogeneity in Effect of COVID on Enrollment Status in Next Year Continuing Students

	Reason for Not Returning to MI Public School									
	Did Not Return		Home school		Private school		Other exit status		Unknown	
	(1)	(2)	(3)	(4)	(5)	(6)	(7)	(8)	(9)	(10)
Post COVID	0.035***		0.021***		0.006***		0.004***		0.005***	
	(0.001)		(0.001)		(0.001)		(0.001)		(0.001)	
X Black	-0.013**	-0.016***	-0.016***	-0.008***	-0.004***	-0.003***	-0.001	-0.002**	0.008	-0.003***
	(0.006)	(0.001)	(0.001)	(0.001)	(0.001)	(0.000)	(0.002)	(0.001)	(0.008)	(0.001)
X Hispanic	-0.010***	-0.009***	-0.008***	-0.005***	-0.001***	-0.001***	-0.002	-0.001	0.001	-0.001
	(0.002)	(0.002)	(0.001)	(0.001)	(0.001)	(0.000)	(0.001)	(0.001)	(0.002)	(0.001)
X Asian	-0.028***	-0.028***	-0.011***	-0.008***	-0.004***	-0.007***	0.001	-0.002	-0.013***	-0.011***
	(0.003)	(0.003)	(0.001)	(0.001)	(0.001)	(0.001)	(0.002)	(0.002)	(0.003)	(0.002)
X American Indian	-0.009	-0.005	-0.008***	-0.007**	0.000	0.001	-0.000	0.000	-0.001	0.001
	(0.006)	(0.006)	(0.003)	(0.003)	(0.001)	(0.002)	(0.002)	(0.003)	(0.003)	(0.003)
X Hawaiian	0.011	0.011	0.000	0.001	0.000	0.001	0.009	0.008	0.002	0.001
	(0.015)	(0.014)	(0.006)	(0.006)	(0.003)	(0.003)	(0.010)	(0.010)	(0.008)	(0.009)
X Poor	-0.003***	0.000	0.000	0.002***	-0.005***	-0.002***	0.001*	0.001**	0.000	-0.001
	(0.001)	(0.001)	(0.001)	(0.001)	(0.001)	(0.000)	(0.001)	(0.000)	(0.001)	(0.001)
X Special Education	-0.005***	-0.004***	-0.002***	-0.002***	-0.002***	-0.002***	-0.000	-0.001	-0.001	-0.000
	(0.001)	(0.001)	(0.001)	(0.001)	(0.000)	(0.000)	(0.001)	(0.001)	(0.001)	(0.001)
X Migrant	0.014	0.007	-0.003*	-0.007***	0.002*	-0.000	-0.011	-0.013	0.026	0.027
	(0.020)	(0.020)	(0.002)	(0.002)	(0.001)	(0.001)	(0.008)	(0.008)	(0.021)	(0.020)
X ELL	-0.021***	-0.013***	-0.010***	-0.005***	-0.003***	-0.001**	-0.004***	-0.001	-0.004***	-0.006***
	(0.003)	(0.002)	(0.001)	(0.001)	(0.001)	(0.000)	(0.001)	(0.001)	(0.001)	(0.002)
X Male	0.001**	0.001*	0.001***	0.001***	0.000*	0.000*	-0.000	-0.000	0.000	0.000
	(0.001)	(0.001)	(0.000)	(0.000)	(0.000)	(0.000)	(0.000)	(0.000)	(0.000)	(0.000)
X Hybrid (district)	-0.004		-0.005***		0.003**		0.000		-0.002	
	(0.003)		(0.001)		(0.001)		(0.001)		(0.003)	
X Remote Only (district)	-0.004		-0.005***		0.005***		0.003*		-0.007	
	(0.003)		(0.001)		(0.001)		(0.002)		(0.004)	
Constant	0.021***	0.028***	0.002***	0.004***	0.002***	0.003***	0.006***	0.008***	0.012***	0.014***
	(0.001)	(0.001)	(0.000)	(0.000)	(0.000)	(0.000)	(0.000)	(0.000)	(0.001)	(0.001)
School fixed effects	N	Y	N	Y	N	Y	N	Y	N	Y
N	3,827,059	3,883,322	3,827,059	3,883,322	3,827,059	3,883,322	3,827,059	3,883,322	3,827,059	3,883,322
R-squared	0.008	0.021	0.011	0.023	0.003	0.012	0.002	0.008	0.006	0.024

Notes: All regressions also include a linear time trend, indicators for 5 race/ethnicity categories (Black, Hispanic, Asian, Native American, Hawaiian; White is omitted), indicators for Economic disadvantage, Special Education status, Migrant status, English Language Learner, Male, Hybrid or both instruction and Remote only instruction (in-person only is omitted). Sample includes all students enrolled in Michigan elementary schools in October from 2014-2019. Status is as of October of the following year. Homeschool, private school, and other exit status are available for all students whose name is on the school roster in September. Students that do not appear on the roster in September are classified as unknown status. Sample size is smaller in odd columns because modality is not available for a small number of districts. Robust standard errors clustered by district in parentheses. *** p<0.01, ** p<0.05, * p<0.1