

NBER WORKING PAPER SERIES

RISK-TAKING AND MONETARY POLICY TRANSMISSION:
EVIDENCE FROM LOANS TO SMES AND LARGE FIRMS

Cecilia R. Caglio
R. Matthew Darst
Şebnem Kalemli-Özcan

Working Paper 28685
<http://www.nber.org/papers/w28685>

NATIONAL BUREAU OF ECONOMIC RESEARCH

1050 Massachusetts Avenue
Cambridge, MA 02138
April 2021, Revised February 2022

We would like to thank our discussants Olivier Darmouni, Mariassunta Giannetti, Luc Laeven, Yueran Ma, and David Thesmar. We thank Boragan Aruoba, Thomas Dreschel, Mark Gertler, Sasha Indarte, Chen Lian, Peter Karadi, Amir Kermani, Nobu Kiyotaki, Guillermo Ordonez, Pablo Ottonello, Pascal Paul, Jose-Luis Peydro, Adriano Rampini, John Shea, Joseph Stiglitz, Ludwig Straub, Thomas Winberry, participants at seminars at Berkeley, Columbia, Duke, MIT, AEA, ECB/CEPR-WEAREIN, NBER EFG, NBER ME and other conference and seminar attendees for useful suggestions. We thank Jacob Faber, Jacob Fahringer, Alvaro Silva, and Adam Tucker for their invaluable research assistance. Kalemli-Özcan thanks NSF Grant 2018623 for support. The views in this paper are solely those of the authors and do not reflect the views of the Federal Reserve Board of Governors, anyone in the Federal Reserve System, or the National Bureau of Economic Research.

NBER working papers are circulated for discussion and comment purposes. They have not been peer-reviewed or been subject to the review by the NBER Board of Directors that accompanies official NBER publications.

© 2021 by Cecilia R. Caglio, R. Matthew Darst, and Şebnem Kalemli-Özcan. All rights reserved. Short sections of text, not to exceed two paragraphs, may be quoted without explicit permission provided that full credit, including © notice, is given to the source.

Risk-Taking and Monetary Policy Transmission: Evidence from Loans to SMEs and Large Firms

Cecilia R. Caglio, R. Matthew Darst, and Şebnem Kalemli-Özcan

NBER Working Paper No. 28685

April 2021, Revised February 2022

JEL No. E32,E44,E52,G20,O16

ABSTRACT

Using administrative firm-bank-loan level data, we document new facts about the U.S. credit market and monetary policy transmission. Private firms that are mostly small-medium-size-enterprises (SMEs) borrow from banks and use their enterprise's continuation value as collateral. Relative to large publicly listed firms, monetary expansions increase highly levered SMEs' demand for credit and their borrowing capacity because their continuation values rise and their ability to repay debt improves. Our results imply that the effectiveness of monetary policy depends on both the firm-size distribution and the type of collateral pledged.

Cecilia R. Caglio
cecilia.r.caglio@frb.gov

R. Matthew Darst
1801 K St. NW Suite 6522
matt.darst@frb.gov

Şebnem Kalemli-Özcan
Department of Economics
University of Maryland
Tydings Hall 4118D
College Park, MD 20742-7211
and CEPR
and also NBER
kalemli@econ.umd.edu

1 Introduction

Many argue that monetary expansions aimed at stimulating the economy in the short run might lead to low productivity and financial instability in the medium run. Low interest rates impact both the level of credit and its allocation across heterogeneous firms (e.g. [Borio and Zhu, 2012](#); [Adrian and Shin, 2009](#); [Acharya and Naqvi, 2012](#); [Gopinath, Kalemli-Ozcan, Karabarbounis, and Villegas-Sanchez, 2017](#); [Asriyan, Laeven, Martin, Van der Ghote, and Vanasco, 2021](#)). For example, accommodative monetary policy can cause under-capitalized banks, seeking margin improvements, to extend loans to high default risk and/or low productivity firms. Or, easy monetary policy may relax financial constraints for less credit-worthy firms and improve their access to credit. Therefore, monetary expansions can increase credit growth, investment, and output today at the expense of corporate debt overhang, greater possibility of a financial crisis, and lower growth in the future.

Understanding how heterogeneous firms and banks respond to monetary policy is central to understanding these trade-offs. However, there is no systematic empirical investigation of monetary policy transmission in the U.S. based on a truly representative sample of heterogeneous firms and banks. We fill this gap by analyzing how borrowers and lenders with heterogeneous credit demand, credit supply, net worth, pledged collateral, and default risk, respond to changes in monetary policy. There is an extensive theoretical literature studying monetary policy transmission in heterogeneous agents macro models focusing on household heterogeneity for consumption channel (e.g. [McKay, Nakamura, and Steinsson, 2016](#); [Kaplan, Moll, and Violante, 2018](#); [Auclert, 2019](#); [Wong, 2019](#)) and firm heterogeneity for investment channel (e.g. [Ottonello and Winberry, 2020](#)). It is difficult to bring firm-side investment models to U.S. data because only large publicly listed firms are required to report their financing sources. Unfortunately, these firms are not representative of the aggregate U.S. economy as we document below.

We use a new supervisory firm-bank matched data set containing a more representative set of U.S. firms than the existing U.S. firm-level data sets that report firm financing sources.¹ Using our data set, we ask the following questions about how monetary policy transmits through heterogeneous firms: Are the effects of monetary expansions on the cost of and demand for credit the same for SMEs and large firms and for private versus publicly listed firms? What are the respective roles that credit demand and supply play in determining equilibrium credit outcomes during monetary expansions? Does the response to expansionary monetary policy differ between firms and banks conditional on default risk and/or net worth?

¹[Dinlersoz, Kalemli-Ozcan, Hyatt, and Penciakova \(2018\)](#) document the selection issues in existing firm-level data sets such as QFR, Kaufman, SBFS and others based on comparisons of matched data to Longitudinal Business Dataset (LBD) of the U.S. Census that represents the universe of U.S. firms.

Does monetary policy interact with the type of collateral pledged in determining the cost of credit and demand for loans during expansions?

The data comes from the quarterly Capital Assessments and Stress Testing Report (FR Y-14Q Report); which is collected by the Federal Reserve as part of the Comprehensive Capital Analysis and Review (CCAR) process for bank holding companies, and U.S. Intermediate Holding Companies of foreign banking organizations. The stress testing exercise covers all systemically important banks—all financial institutions with \$50 billion or more in total consolidated assets.² Moreover, the data covers approximately 70 percent of total Corporate and Industrial (C&I) loans made to U.S. firms from Q3:2012 to Q4:2019.

The data is at firm-bank-loan-quarter level and contains detailed firm and bank balance sheet data, including debt of various types and lenders. We show that SMEs borrow entirely from banks with almost no presence in the bond markets. This fact is missed in the official aggregate data. Figure 1 plots financing sources for the non-financial business sector from the Financial Accounts of the United States (known also as ‘the Flow of Funds’). Panel (a) shows the debt share for publicly listed and large private firms (such as C and S corporations), known as “non-financial corporate businesses,” an aggregate that is extensively used by researchers. The share of bank finance, shown by the line “Bank Debt” is small for these companies—around 20 percent on average. Panel (b) plots the “non-financial businesses” aggregate which includes other small private firms.³ The figure shows that the bank-finance share goes up to 30 percent. In addition, the share of market debt declines sharply. Although bank financing overall plays a small role in the aggregate data, the difference between the two panels hints at the importance of bank financing for SMEs.

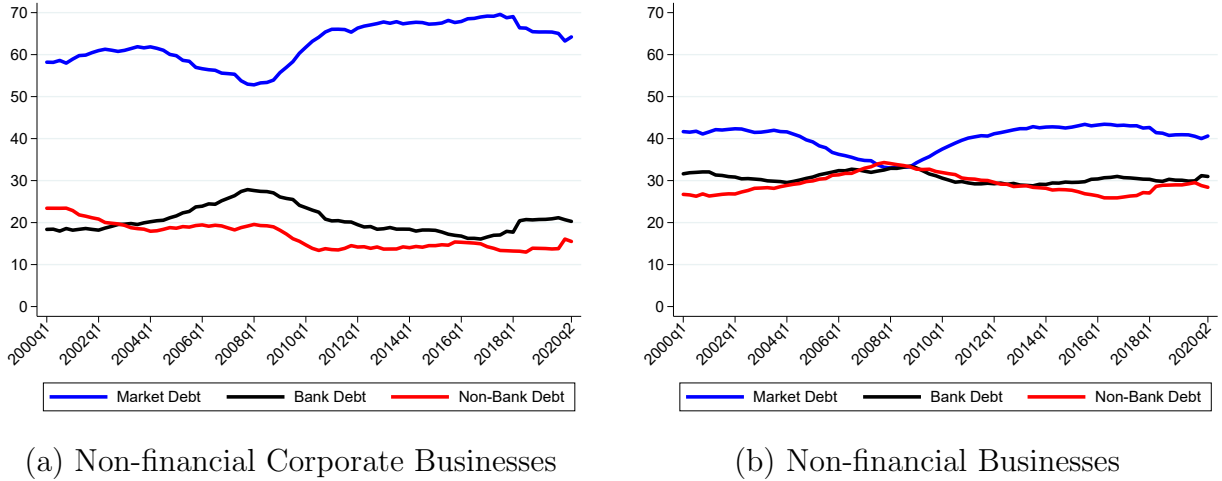
FR Y-14Q data paints a drastically different picture. Figure 2 plots the share of bank debt on firm balance sheets in the Y-14, only for private firms, to highlight the stark difference from the aggregate data that is dominated by listed firms. For large private firms, defined as firms in the upper quartile of the asset distribution, the Y-14 data matches the narrative of the aggregate data in Figure 1 (a); bank lending accounts for only 20 percent of their financing. However, financing for the remaining private firms—small and medium

²The asset threshold has changed to \$100 billion in 2019. The appendix provides a list of the financial institutions that report information for the CCAR process.

³The private firms included in the non-financial business series that are excluded from the non-financial corporate business series include, among others, partnerships and sole-proprietorships. In the Financial Accounts of the United States, liabilities for private firms both under “non-financial corporate” and “non-financial businesses” are not built from the bottom up. They are “estimates” apportioned into categories from sources than can be identified. For example, the loan liabilities in the “non-financial business” category are derived from tax data from the IRS-SOI year end bulletin, and an estimate of loan shares from FRB 2003 Survey of Small Business Finance, a survey that is discontinued. Liabilities are derived from IRS tax records as a residual category because tax returns do not require liability reporting for private firms in the U.S.

size categories—is almost exclusively bank-based. Private firms below the 75th percentile of the asset distribution have assets less than \$43 million and revenue less than \$86 million. The median firm has \$12 million in assets and \$28 million in sales. Hence, most of the Y-14 private firms, including the median firm, are SMEs.⁴

Figure 1: Non-financial Firms’ Financing in the Financial Accounts of the United States



Note: The panel (a) represents the debt share for the “non-financial corporate businesses” in the U.S. The panel (b) represents the debt share for all “non-financial businesses” in the U.S. The “Bank Debt” include Corporate and Industrial (C&I) loans and non-residential mortgages held by banks. “Non-bank Debt” includes, among others, syndicated loans held by non-banks, non-residential mortgages held by non-banks, and finance company loans. “Market Debt” comprises corporate bonds, commercial paper, and industrial revenue bonds. Source: Financial Accounts of the United States.

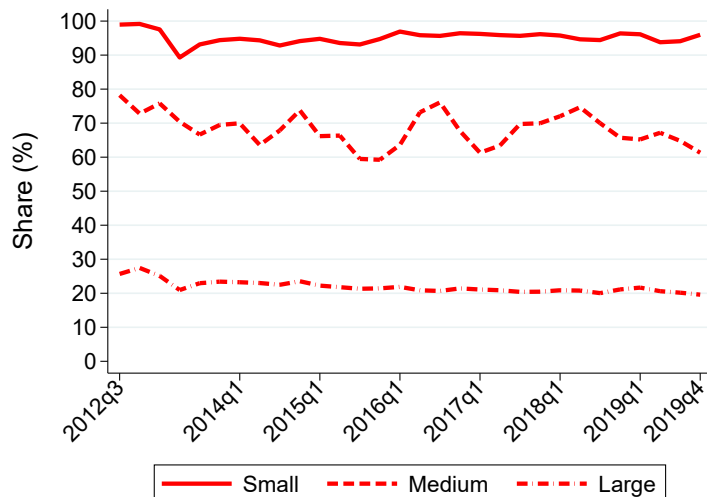
Understanding the borrowing patterns and loan terms of bank-financed SMEs are instrumental in understanding monetary policy transmission in the U.S. SMEs account for 99.8 percent of all U.S. firms, 52 percent of private sector employment and 48 percent of private sector gross output.⁵ The firms in the Y-14 data account over 60 percent of the entire U.S. corporate sector debt and almost 80 percent of the U.S. gross output.

The econometric methodology we employ is difference-in-differences. We regress two main credit outcome variables—cost and amount of credit—on measures of firm, bank, and loan heterogeneity interacted with high frequency monetary policy surprises as measured by [Gürkaynak, Sack, and Swanson \(2005\)](#) (GSS). The regressions assess the impact of a monetary policy surprise in quarter q on the credit outcomes for different firms and banks from quarter q to $q + 1$. We include bank \times quarter and firm \times quarter fixed effects sepa-

⁴In U.S., SMEs are defined as firms with less than 500 employees. There is not a well-established asset and/or revenue cut-off to define SMEs in the U.S. for all the industries. Since Y-14 data does not cover employment, we follow the OECD definition of SMEs as firms with assets less than \$10 million, and/or revenue less than \$50 million.

⁵See www.census.gov.

Figure 2: Share of Bank Debt in Non-financial Private Firms' Financing in FR Y-14



Note: The figure plots the median loan *utilization* as share of total balance sheet debt (loans and bonds) for various points in the asset-size distribution among private borrowers. See Figure 19 for median loan *commitment*. Source: FR-Y14Q H.1

rately to pin down the relative importance of credit demand versus supply. Regressions with bank \times quarter fixed effects use cross-firm variation in firm credit demand from a single bank. Regressions with firm \times quarter fixed effects use variation in credit supply from multiple banks lending to the same firm. Finally, to ease concerns of non-random matching between firms and banks, we use variation from multiple loans between a given firm-bank pair by employing firm \times bank \times quarter fixed effects—*within-firm-bank* variation—where credit outcomes are driven simultaneously by changes in loan demand and supply for a given relationship.

Heterogeneous financial frictions can be important for understanding monetary policy transmission. Gertler and Karadi (2015) argue that monetary policy can change the cost of credit through movements in risk spreads. Therefore, monetary policy may impact loan terms for firms with high default risk differently than firms with low default risk. Ottonello and Winberry (2020) show that, although expansionary monetary policy lowers the cost of credit, firms with high default risk (high leverage firms) might respond less than low default risk firms to monetary expansions due to increasing marginal costs. Alternatively, monetary expansions improve the borrowing capacity for small and low net worth borrowers (e.g. Bernanke and Gertler, 1989) with aggregate consequences (e.g. Bernanke, Gertler, and Gilchrist, 1996). The loan-level pricing and pledged collateral information provided in Y-14 allow us to zoom in on the financial friction that expansionary monetary policy relaxes: lower default risk, higher net worth, or both.⁶

⁶It is very rare to observe both the loan-level interest rates and loan-level collateral in credit registries.

We show that SMEs with higher leverage borrow more at a higher cost during monetary expansions. This is a result driven both by their higher demand for credit and larger borrowing capacity. The intuition comes from the particular type of collateral SMEs pledge: SMEs mostly borrow against collateral whose value is inextricably tied to firm operations and enterprise continuation values and not against collateral whose value is market or re-sale based such as fixed assets and real estate. SMEs that pledge earnings and operations based collateral access more credit at lower rates during normal times, and this access to credit effect is amplified during monetary expansions. Expansionary monetary policy stimulates aggregate demand and firms’ earnings, which reduces highly levered SME spreads on loans backed by collateral tied to earnings and operations. The higher cost of borrowing these leveraged SMEs pay relative to others is a result of their higher credit demand.

The impact of monetary policy in the full sample of Y-14 firms is driven by private firms, which are mostly SMEs. For large publicly listed firms, we find the opposite result. Highly levered public firms, regardless of the type of collateral they pledge, obtain less credit and pay higher spreads when pledging collateral, even during monetary expansions. “Smaller” publicly listed firms can still be subject to earnings based constraints as shown recently (e.g. [Lian and Ma, 2020](#); [Ivashina, Laeven, and Moral-Benito, 2020](#); [Drechsel, 2019](#)).⁷ Our granular data on pledged collateral shows that earnings based constraints are even more important for SMEs and central to monetary policy transmission.

Finally, we do not find any evidence of risk-taking by banks. In fact, our results suggest the opposite; highly levered banks *lend less* to risky private firms and SMEs during monetary policy expansions. The credit supply results support our interpretation that monetary expansions work through heterogeneous credit demand. We also find evidence that banks lend *less* to firms that generate loan losses due to prior non-performing loans (NPLs). Overall, our results show that credit growth under low interest rates depends crucially on firm credit demand and the earnings and operations based collateral SMEs use to borrow.

We proceed as follows. Section 2 summarizes the literature. Section 3 describes the data in detail presenting new stylized facts. Section 4 presents the empirical results on monetary policy transmission and documents risk-taking by firms and banks. Section 5 presents a primer on a potential theoretical mechanism, and Section 6 concludes.

The only other credit registry with this information, to the best of our knowledge is from an emerging market, Turkey, see [di Giovanni, Kalemli-Ozcan, Ulu, and Baskaya \(2019\)](#).

⁷This literature relies on data for large listed firms and firms who have access to bond markets. They do not focus on SMEs. The FR Y-14 data shows that the collateral pledged among small publicly listed firms is typically blanket liens and AR&I collateral as well, providing new evidence that is consistent with the findings of these papers.

2 Literature

Our paper contributes to several strands of literature. First, we contribute to the literature that studies the impact of monetary policy with a focus on financial frictions, both from the borrower and lender sides. [Bernanke and Gertler \(1989\)](#) and [Bernanke, Gertler, and Gilchrist \(1996\)](#) focus on the financial accelerator channel in representative agent new Keynesian models. Expansionary monetary policy improves net worth and reduces agency frictions, which allows low net worth (risky) borrowers to increase their access to finance. Alternatively, low interest rates reduce funding costs and the incentive to produce risky projects, which may result in less credit rationing across borrowers (e.g. [Stiglitz and Weiss, 1981](#)). Low interest rates can also induce “search-for-yield” behavior and reallocate capital toward risky borrowers (e.g. [Rajan, 2005](#)). [Adrian and Shin \(2009\)](#) show that, in response to low interest rates, large and well capitalized banks take more risk. Similarly, [Dell’Ariccia, Laeven, and Suarez \(2017\)](#) find that *high capital-low leverage* bank portfolios become more risky—higher share of risky loans—when interest rates fall. Moreover, these banks charge lower spreads on syndicated loans during expansionary policy (e.g. [Paligorova and Santos, 2017](#)). Other papers find the opposite result: *low capital-high leverage* banks lend to “riskier” borrowers who have defaulted before (e.g. [Jiménez, Ongena, Peydró, and Saurina, 2014](#); [Ioannidou, Ongena, and Peydró, 2014](#)). Our contribution to this literature is to investigate risk-taking from both sides, borrowers and lenders, focusing on heterogeneous financial frictions. We show that credit growth is driven by the borrower side during expansions, where these borrowers are risky since they are smaller firms and have high leverage that implies higher default risk. We also show why risky firms borrow more: monetary expansions relax their earnings and operations based constraints, increasing their borrowing capacity.

Second, our paper relates to the literature studying how firm heterogeneity, in terms of firm size, age and leverage, affects monetary policy transmission (e.g. [Gertler and Gilchrist, 1994](#); [Jeenas, 2019](#); [Cloyne, Ferreira, Froemel, and Surico, 2018](#); [Ottonello and Winberry, 2020](#)). The empirical results from this literature are mixed as they are based on different U.S. firm samples. Our representative sample of U.S. firms allows us to pin down the firm heterogeneity that matters for the policy transmission and document the mapping from firm heterogeneity, in terms of size, age, leverage, to firm-level financial frictions. Our results are fully consistent both with [Gertler and Gilchrist \(1994\)](#) and [Ottonello and Winberry \(2020\)](#). The former study shows the importance of small firms for policy transmission and the latter shows, although theoretically ambiguous, empirically, high leverage public firms respond less to monetary policy shocks. We find similar results for highly leveraged public firms (see Appendix Table 18), but highly levered private firms and SMEs both respond more to

monetary policy shocks, making smaller firms important for the transmission as argued by [Gertler and Gilchrist \(1994\)](#). We provide an interpretation of our results from the lens of the model of [Ottonello and Winberry \(2020\)](#) in our last section.

Third, our paper contributes to the literature highlighting the importance of financial contracts in transmitting shocks to the aggregate economy. In the models developed by [Kiyotaki and Moore \(1997\)](#) and [Kiyotaki, Moore, and Zhang \(2021\)](#), entrepreneurs borrow against fixed assets and real estate (trees). If a firm uses these assets as collateral and defaults, then lenders confiscate the assets and sell them to other buyers. Hence, the market or liquidation value of the asset determines its collateral value to lenders. In these models, entrepreneurs use collateral to generate output (fruit) but cannot borrow against future output. However, in our data, SME loans are most frequently secured by accounts receivable and inventory (AR&I) collateral and blanket liens: Firms pledge *current* fruit whose value derives from firm operations. This is because sales that firms generate combine ideas, intangible capital, marketing of products, etc. and get embedded into the value of the fruit they produce and become capitalized on the balance sheet and pledgeable as AR&I and blanket lien. We find that monetary policy not only changes the relative price of fixed assets as in traditional models, it also impacts firms' ability to produce its own assets that are used as collateral (fruit). The framework of [Benmelech and Bergman \(2012\)](#) can rationalize our findings. They argue that monetary policy, through the general equilibrium impact on aggregate demand, increases firm sales (and accounts receivable), which increases borrowing capacity.

Our results are consistent with the new literature that draws a distinction between debt secured by assets (asset based loans) and debt tied to firm cash-flows and earnings (earnings-based or going concern debt) (e.g [Lian and Ma, 2020](#); [Kermani and Ma, 2021](#)). Our contribution here is to draw on brand-new granular data on pledged collateral, which allows us to show that the firm itself *creates* its own collateral value through production rather than purchasing it as it does with land or machines. We show that the inability to separate the liquidation value of AR&I from going-concern value embedded in blanket liens is particularly important for SMEs who do not have large amounts of tangible fixed assets to pledge. We call AR&I and blanket lien collateral, 'earnings and operations based' collateral. Our results on monetary policy transmission show that these two types of collateral, AR&I and blanket liens, work in the same way in the data because their values derive from firm operations and continuation values.

Fourth, we contribute to the literature arguing that monetary policy can be less effective or less powerful during recessions and/or during a low interest rate environment (e.g [Tenreyro and Thwaites \(2016\)](#), [Kiyotaki, Moore, and Zhang \(2021\)](#).) Our contribution shows that the

power of monetary policy depends on heterogeneity in terms of firm size and the type of collateral used to secure loans, especially during monetary expansions and low interest rate periods.⁸

3 Data

We present a brief description of our data in this section and provide additional details in the Data Appendix.

3.1 Sample Construction

For each quarter, we define private firms in FR Y-14Q data as those that cannot be matched to COMPUSTAT either via 6-digit CUSIP or via tax ID (EIN). Large public firms generally report consolidated financial statements to banks. To avoid double counting of financial variables, we match our data to the Bloomberg Corporate Structure Database with EIN, when possible, or name matching. We roll up loans to subsidiaries to their parent company when banks report parent company rather than subsidiary financial information. In these cases, treating subsidiaries as separate “firms” would introduce errors in firm size and other distributional cuts of the data.⁹ The final data has 3,798,946 loan-level observations for 155,589 U.S. corporations. Importantly, the data contain nearly 153,000 unique private firms.

3.2 Coverage and Firm Representation

There are many advantages of the FR-Y14Q data. First, the data contains a broader cross-section, by both firm size and sector, of U.S corporate borrowers. Figure 3 shows the average

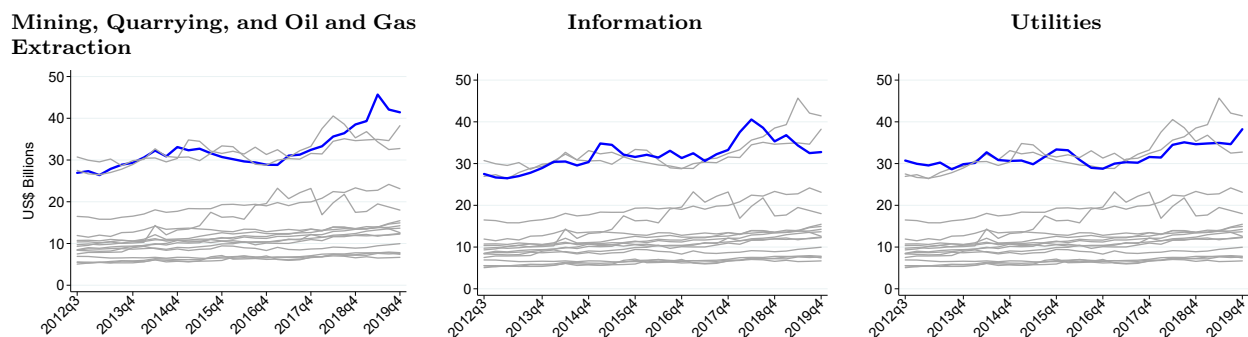
⁸Our paper also contributes to a growing literature using the FR Y-14 data. The data is used to study the impact of CDS use by banks on borrower credit risk (Caglio, Darst, and Parolin, 2019), the relationship between U.S. exchange rates and banks credit supply to foreign firms (Niepmann and Schmidt-Eisenlohr, 2018), how banks re-balance their portfolios due to losses (Bidder, Krainer, and Shapiro, 2018), how monetary policy transmits differently through credit lines versus terms loans during COVID-19 shock (Greenwald, Krainer, and Paul, 2020; Chodorow-Reich, Darmouni, Luck, and Plosser, 2020), the effect of corporate taxes on leverage (Ivanov, Pettit, and Whited, 2020), estimating the value of collateral in new loan originations (Luck and Santos, 2019), and the real effects of quantitative easing (Luck and Zimmermann, 2020), among others.

⁹Relying on the tax ID without the full corporate structure to identify unique firms in the data is also problematic because banks frequently report identical tax ids for both parent companies and their subsidiaries. This results in different balance sheet information for the same tax id because the balance sheet information is attributed to two distinct firms. For robustness in all of our regressions, we remove the loan amounts to identified subsidiaries and find that the results are qualitatively the same.

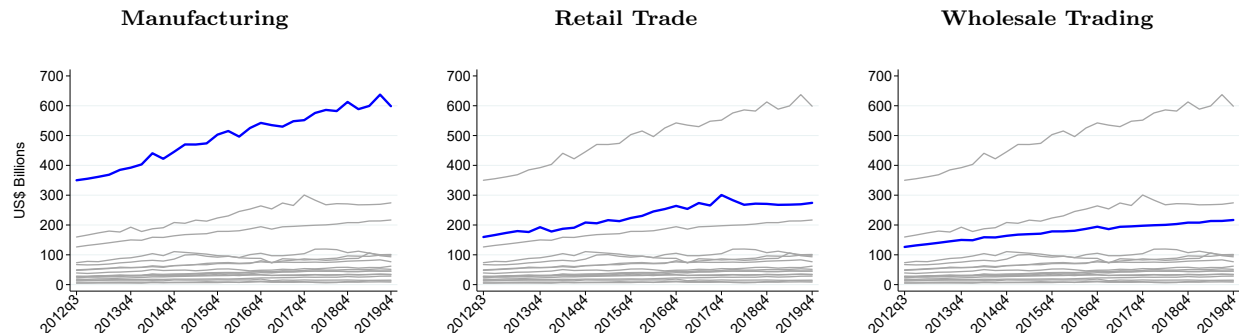
and total dollar amounts committed to each two-digit NAICS sector in Panels (a) and (b) respectively. The Figure shows that, on average, the largest loans are committed to firms in the utilities; information; and mining, quarrying, and oil and gas extraction sectors. By contrast, aggregate commitments are largest for firms in the manufacturing and wholesale and retail trade sectors, indicating that there are many small loans to a large number of businesses in these sectors.

Figure 3: Loan Commitments by Sector

Panel (a): Mean Exposure by Sector



Panel (b): Total Exposure by Sector



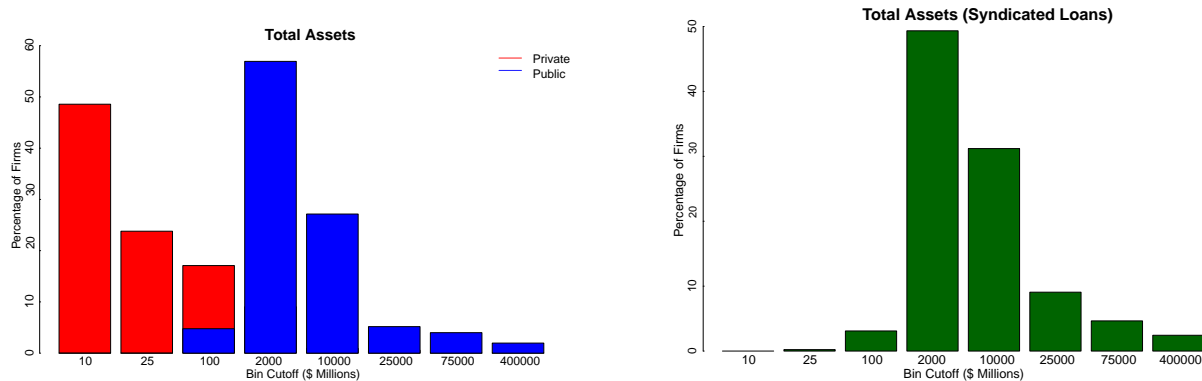
Note: Panel (a) plots the mean dollar value of loan commitments made by CCAR banks to firms by the borrower's primary 2-digit NAICS industry. Panel (b) plots the total dollar value of committed loans made by CCAR banks to firms by the borrower's primary 2-digit NAICS industry. Source: FR-Y14Q H.1.

Figure 4 shows the firm size distribution based on assets. Panel (a) shows histograms for all private firms in red bars and public firms in blue bars. Panel (b) shows the histogram for firms in our data who also borrow in syndicated loan markets.¹⁰ Two important features emerge. First, most private borrowers in our data are SMEs because they have less than \$10 million in total assets. Second, panel (b) shows that the firm size distribution of firms who

¹⁰The FR Y14 data have a syndicated loan flag that allows one to identify syndicated loans. Only 1300 firms of the nearly 155,000 private firms in our sample borrow in syndicated loan markets.

borrow in syndicated loan market is almost identical to the size distribution of public companies. This is important because it shows that the two popular data sources for syndicated loan research, LCD Dealscan and the Shared National Credit Registry (SNC) with covenant information, may not contain a representative set of U.S. corporate borrowers.¹¹

Figure 4: Firm Size Distribution: Private vs. Public Firms and Syndicated Loan Borrowers



Note: The figure shows firm size distribution based on assets, for all private firms (red bars) and public firms (blue bars), in Panel (a), and for firms in our data who also borrow in syndicated loan markets, Panel (b).

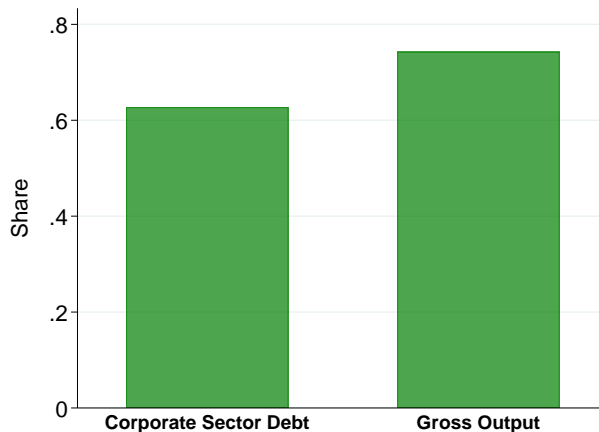
Figure 5 plots the aggregate total dollar value of liabilities in the FR Y-14 data (from firms' balance sheets including bonds and loans) as a share of the aggregate dollar value of non-financial business debt liabilities from the Financial Accounts of the United States. In terms of total liabilities, the Y-14 data covers over 60 percent of total liabilities reported in the official Financial Accounts of the U.S. during the sample period (first green bar). The second bar shows the share of Y-14 firms in U.S. output. We do the same exercise using total gross output from the Bureau of Economic Analysis output tables. The total Y-14 firms represent almost 80 percent of the U.S. economy.¹²

Finally, there are few drawbacks of the FR Y-14Q data. First, the time-series only dates back to 2012, which precludes studying issues related to the 2008 financial crisis. Second, banks update large firm balance sheet information every quarter but often update small firm balance sheet information bi-annually. Around 60 percent of the private firm balance sheet information is updated quarterly. Finally, the \$1 million loan reporting limit and absence of

¹¹To be included in SNC, firms need to borrow 20 million USD minimum from at least 3 banks. LCD Dealscan only contains information at origination and hence one cannot track the loan until its maturity.

¹²The publicly listed firms in Y-14 data account for 31 percent of the U.S. corporate debt. Not all publicly listed firms borrow from banks and hence not covered in Y-14 data. The share of U.S. corporate debt attributable to the universe of publicly listed firms is 48 percent. In terms of domestic U.S. gross output, publicly listed firms only account for 44 percent, once the foreign output is cleaned from the data. See [Dinlersoz, Kalemli-Ozcan, Hyatt, and Penciakova \(2018\)](#).

Figure 5: Coverage of Y-14 Data: Aggregate U.S. Corporate Debt and Output



Note: The first bar is corporate sector debt in Y-14 data as a share of total non-financial business debt liabilities from the U.S. Financial Accounts. The second bar shows gross output in Y14 as a share of BEA U.S. gross output.

small banks prevents one from studying the smallest establishments in the economy, which covers the remaining 30 percent of the all U.S. C&I lending.

3.3 Descriptive Statistics and New Facts

In this section, we present novel stylized facts about the U.S. credit market.

3.3.1 Banks

Table 1 shows descriptive statistics for the 39 banks subject to CCAR. Total (0.882) and short-term (0.727) bank leverage during our sample period are lower than before the financial crises due to various post-crisis regulatory reforms. The last two rows report bank charge offs, which are non-performing loan losses on banks' balance sheets. The average bank charge-off is about about \$22 million and represents on average 6 percent of a given loan, again showing that non-performing loan issues were not big during this period.

3.3.2 Firm Size and Leverage

Tables 2, 3, and 4 provide summary statistics for a number of firm balance sheet variables and loan-level information on pricing, collateral and maturity. These summary statistics suggest that financial constraints are tighter for private than public firms.

Table 2 shows that the average private firm has \$137 million in assets compared to \$10 billion for the average public firm. The average private borrower is more levered in terms of short term debt leverage and has higher sales growth and investment than the average public

firm. The average private firm does not access other financing sources than banks. They have almost no outstanding bonds, nor any other form of security outstanding—for example, commercial paper, privately placed or expired bond. By contrast, a large part of publicly listed firms have current bonds outstanding (34 percent) and almost all have issued some form of security (99 percent).

Table 3 compares firms along the size distribution and leverage dimensions. The Table shows that SMEs have average assets of \$18.5 million compared to the average large firm—defined by the upper quartile of the asset distribution—with \$1.8 billion, and have slightly higher sales growth. Large firms are more leveraged than SMEs. In general, sales growth and investment are similar among high and low leveraged firms, for all firms and for SMEs.

Finally, Table 4 shows that private borrowers pay higher interest rates on their loans than public borrowers, despite almost always collateralizing loans. Accounts receivable and inventory and blanket liens are the most common forms of collateral used by private firms.

Table 1: Summary Statistics – Bank Level

	(1) 1st Qu.	(2) Median	(3) Mean	(4) 3rd Qu.	(5) SD
Liabilities-to-Assets	0.868	0.884	0.882	0.897	0.024
Short-Term-Debt-to-Assets	0.690	0.769	0.727	0.808	0.14
Charge-off _{<i>t</i>} (millions)	0	10.415	22.618	29.295	38.887
Charge-off/Loan _{<i>t</i>}	0	2.645	5.857	7.347	10.351

Note: This table reports bank level statistics for the 39 banks that report loan and borrower information on the FR Y-14Q used in the analysis. Liabilities-to-assets use total liabilities and the short-term-debt-to-assets ratio uses only financial debt liabilities due within one year. Charge-off is the cumulative dollar value of all net charge-offs across all outstanding loans on a bank’s balance sheet. Charge-off/loan is the ratio of the cumulative charge off associated with a given loan over the remaining committed value of the loan. Source Y9C and FR Y-14Q H.1.

3.3.3 Firm Size and Collateral

Figure 6 plots the share of loans secured by some form of collateral. 90 percent of all private loans are collateralized (red solid line), compared to roughly 50 percent for public borrowers (blue solid line). Remarkably, 95 percent of all loans to smaller private firms are collateralized (red dotted line), while small public firms collateralize up to 70 percent of the loans (blue dotted line). Hence pledging collateral can be mapped one to one to firm size indicating small firms are more financially constrained than large firms.¹³

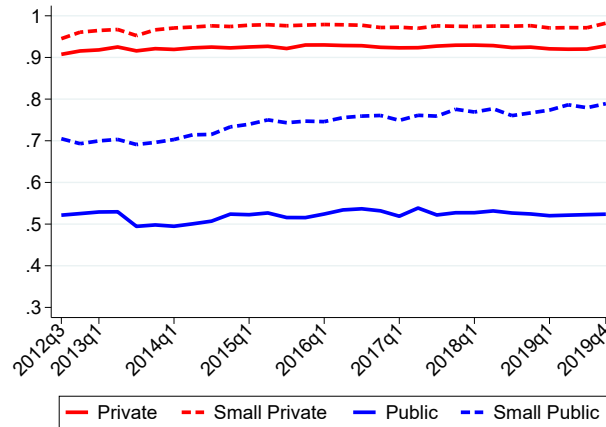
¹³Gopinath, Kalemli-Ozcan, Karabarbounis, and Villegas-Sanchez (2017) show evidence for similar size dependent collateral constraints for European firms.

Table 2: Summary Statistics – Firm Level

	(1)	(2)	(3)
	All Firms	Private Firms	Public Firms
<i>Levels (millions \$)</i>			
Fixed Assets	169.575	38.673	6298.168
Capital Expenditures	650.642	20.965	19611.266
Total Assets	419.795	137.144	10012.128
EBITDA	60.842	17.764	1518.326
<i>Ratios</i>			
Liabilities-to-Assets	0.626	0.627	0.582
Account Receivable-to-Sales	0.117	0.092	0.957
Inventory-to-Sales	0.112	0.102	0.433
Short-Term-Debt-to-Assets	0.140	0.144	0.014
Δ Fixed Assets/Fixed Assets	0.133	0.134	0.093
Sales Growth	0.017	0.350	0.313
Share of firms issuing bond	0.012	0.006	0.337
Share of firms issuing securities	0.060	0.040	0.990

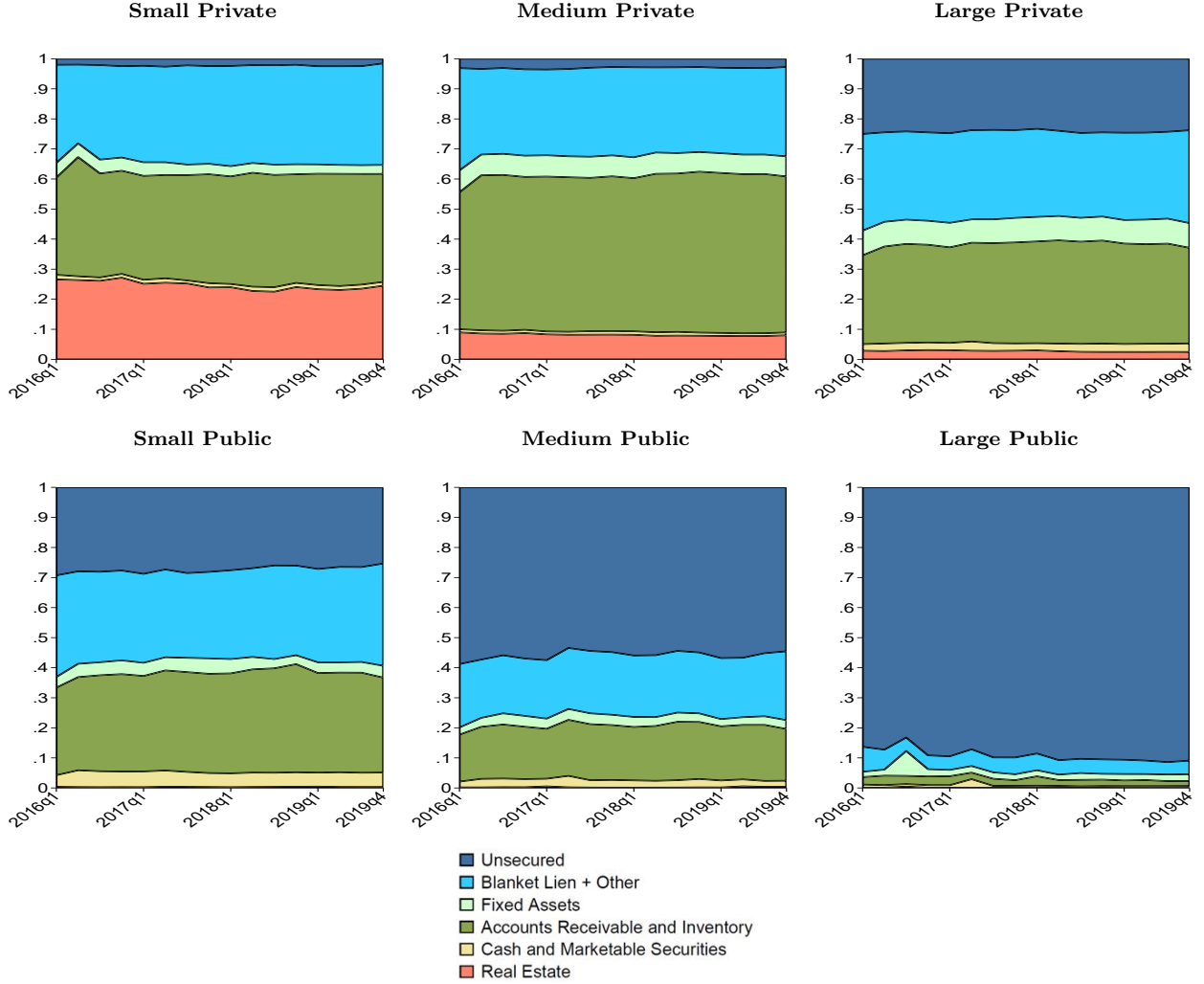
Note: This table reports mean of firm balance sheet and income statement variables by firm type. The sample includes 155,600 U.S. firms for the period 2013-2019, excluding financial and government owned firms such as utilities, and 2,043,008 firm-quarter pairs. All dollar amounts in the table are expressed in millions. Liabilities-to-Assets is defined as total liabilities over total assets while short-term-debt-to-assets is defined as total short-term financial debt over total assets. Δ fixed assets is defined as the annual change in fixed assets. Sales growth is defined as the annual percentage change in total sales. Private firm accounting and income statement data come from the FR Y-14 H.1 Schedule and are winsorized at 4 percent; public firm data are from the S&P Compustat database and are winsorized at 1 percent. Refer to Table A.1 in the Appendix for additional variable definitions.

Figure 6: Share of Loans that are Collateralized: Public vs. Private



Note: The figure reports the share of loans that are collateralized, for private (red) and public (blue) borrowers. The solid line is the share of total loans collateralized for the private and public firm samples. The dashed line represents the share of total loans that are collateralized for firms in the 25th percentile of the asset distribution (small), for both the private and public firm sample. Source: FR Y-14Q H.1

Figure 7: Collateral Types Across Firm Size Distribution by Public and Private Firms



Note: The figure plots the value share of loans secured by different collateral types over time. The different types of collateral are cash and marketable securities (yellow); accounts receivable, inventory (green); blanket liens (light blue); fixed assets (mint); real estate (salmon); and unsecured loans (dark blue). The top three panels from left to right show loan values secured by the different collateral types and unsecured for private borrowers in the bottom quartile of assets (small), between the bottom and top quartile of assets (medium), and above the top quartile of assets (large). As an example, we add up the value of all loans for firms below the bottom quartile (Total Loan Value_{ct}). We then add up the value of all loans for firms within each quartile and loan category (Total Loan Value_{ct}). The graph shows at each point in time the share of loan value accounted for each category $Share_{ct} = \text{Total Loan Value}_{ct} / \text{Total Loan Value}_t$. The bottom three panels present the same information for public borrowers. Source: FR Y14-Q H.1.

Table 3: Summary Statistics by Firm Size and Leverage – Firm Level

			All Firms		SME	
	(1) All SME	(2) Large	(3) High Leverage	(4) Low Leverage	(5) High Leverage	(6) Low Leverage
<i>Levels (millions \$)</i>						
Fixed Assets	6.647	449.472	147.622	168.480	7.404	5.922
Capital Expenditures	2.693	496.268	153.077	209.865	1.919	2.832
Total Assets	18.527	1086.888	357.883	426.988	17.711	17.990
EBITDA	2.543	157.381	56.009	65.165	2.437	2.354
<i>Ratios</i>						
Liabilities-to-Assets	0.614	0.643	0.784	0.492	0.794	0.474
Account Receivable-to-Sales	0.100	0.147	0.087	0.125	0.072	0.115
Inventory-to-Sales	0.105	0.125	0.120	0.100	0.114	0.094
Short-Term-Debt-to-Assets	0.136	0.144	0.247	0.045	0.241	0.049
Δ Fixed Assets/Fixed Assets	0.141	0.102	0.108	0.123	0.097	0.132
Sales Growth	0.363	0.318	0.361	0.371	0.373	0.373
<i>Observations</i>						
Firms	116157	55843	88882	105325	62936	78350
Firm-Quarter	1267683	766629	884048	1080736	526547	691637

Note: This table reports mean of firm balance sheet and income statement variables by firm size. See Table 2 for the definition of variables. ‘SME’ are firms with sales less than 50 million on average throughout the sample. ‘High Leverage’ firms those with leverage greater than the median leverage in the sample on average. Refer to Table A.1 in the Appendix for additional variable definitions.

Table 4: Summary Statistics – Loan Level

	(1) All Firms	(2) Private Firms	(3) Public Firms
Interest Rate (Percent)	2.80	3.00	1.90
Collateral: Fixed assets and real estate	0.243	0.266	0.14
Collateral: Cash and marketable sec	0.024	0.022	0.034
Collateral: Act. receiv. and inventory	0.284	0.308	0.172
Collateral: Blanket lien and other	0.304	0.322	0.224
Collateralized	0.854	0.916	0.567
Maturity (in years)	3.079	3.1	2.994

Note: This table reports loan-level mean of each variable. The collateral categories are the fraction of total loans collateralized by each respective category. For example, among all firms, 24 percent of all loans are collateralized by fixed assets and real estate. Collateralized is the fraction off all loans that are collateralized by any collateral category. For example, among all firms, 85.4 percent of loans are collateralized.

The FR-Y14Q data also contains granular information about the type of collateral used to secure a loan. Specifically, the banks report six collateral categories: real estate; fixed assets; cash and marketable securities; accounts receivable and inventory (AR&I); blanket liens, and other. Figure 7 shows loan shares (by value) secured by the different collateral types.¹⁴ There are several remarkable features to highlight. First, real estate collateral (in

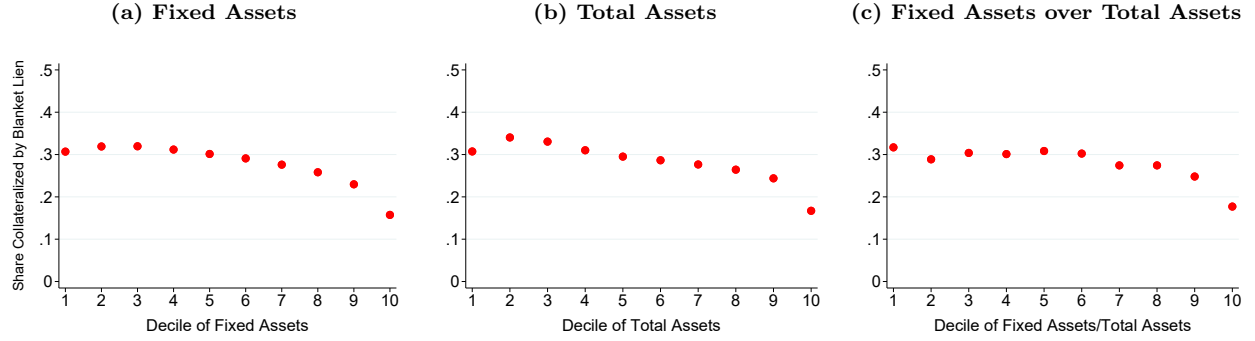
¹⁴Appendix Figure 21 shows the same figure based on number of loans instead of value.

red) is important only for the smallest private borrowers and virtually absent among public borrowers. Second, fixed assets (light green) as a fraction of all collateralized loans is not an important source of collateral and may only reflect leases (Eisfeldt and Rampini, 2008). Third, AR&I (dark green) and blanket liens (light blue) are equally important collateral sources across the firm size distribution except for the medium and large public companies. In fact AR&I and blanket lien collateral are the most important collateral for all private firms and the smallest public firms. Finally, unsecured borrowing (dark blue) increases monotonically across firm size and dominates the borrowing pattern of large public firms. Appendix Figure 20 zooms in on SMEs and shows the same collateral break down. As expected, the figure mimics the pledged collateral by small private and medium private firms, and shows that the most important form of collateral used to borrow by financially constrained SMEs are AR&I and blanket liens.

Technically, blanket liens are loans secured by all firm assets, which gives the lender a legal claim to all of a borrower’s business assets in the event of default. A loan secured by a blanket lien will cover the entire firm and all unencumbered assets not already pledged as collateral. However, if a borrower previously pledged specific asset—such as real estate and fixed assets—to secure a loan, then a future loan with a blanket lien is secured only by the firm’s remaining unencumbered assets. Accounts receivable and inventory are usually what remain after other fixed assets have been pledged.

Figure 8 shows that use of blanket liens by SMEs is due to a trade-off between lack of physical assets and a desire to borrow but being financially constrained. We plot the share of loans secured by blanket lien for each decile of the fixed assets distribution in panel (a), for each decile of total assets distribution in panel (b) and for each decile of fixed to total assets distribution in panel (c). If blanket lien collateral covers mostly fixed assets, then this relationship should be positive. The data shows that the relationship is negative; larger firms with more fixed assets use fewer blanket liens as collateral to secure funding. Table 5 shows, for the average private firm with existing collateralized loans, the share of subsequent loans secured by different collateral types. For example, the first row shows that, conditional on existing loans being collateralized by non-blanket lien, the share of new loans secured by blanket lien is 19.5 percent. More importantly, conditional on having already encumbered fixed assets and real estate, the share of additional loans secured by AR&I and AR&I and blanket liens 17.2 percent and 35 percent respectively. This evidence further indicates that blanket liens, like AR&I, secure additional loans and do not simply proxy for liens against fixed assets and real estate.

Figure 8: Relation Between Blanket Liens and Fixed Assets for Private Firms



Note: Each panel shows the share of loans secured by blanket liens across: (a) each decile of the fixed assets distribution, (b) each decile of the total assets distribution and (c) each decile of the ratio of fixed assets over total assets. The plots only consider private firms.

Table 5: Multiple Loans Secured by Different Types of Collateral for the Average Private Firm

Share of Additional Loans Collateralized by	
Blanket Lien (1)	0.1950
AR&I (2)	0.1725
AR&I and Blanket Lien (3)	0.3508
Note: (1) Firms with more than one loan and at least one non-blanket lien loan. (2) Firms with more than one loan and at least one fixed assets and real estate loan. (3) Consider firms with more than one loan and at least one fixed assets and real estate loan.	

4 Monetary Policy Transmission with Heterogeneous Firms and Banks

In this section, we map monetary policy surprise shocks to firm-bank and loan-level credit outcomes to understand the role that firm, bank, and collateral heterogeneity play in monetary policy transmission.

4.1 Measuring Monetary Policy Surprises

We estimate monetary policy surprises, denoted with ‘MP’, following the high frequency methodology of [Gürkaynak, Sack, and Swanson \(2005\)](#). In particular, we compute the sur-

prise component of a policy announcement at the monthly level as:

$$MP_t^m = \gamma_t \times (\text{ffr}_t^m - \text{ffr}_{t-\Delta t}^m); \gamma_t \equiv \frac{\tau^n}{\tau^n - \tau^d} \quad (1)$$

where m denotes the month, ffr_t is the implied Fed Funds Rate from a Federal Funds future contract at time t , and the adjustment factor, γ_t , controls for the timing of the announcement within the month. τ^n is the number of days in the month of the FOMC meeting, and τ^d is the day of the FOMC meeting.¹⁵ It is common to use a combination of current month, 3-month ahead and 6-month ahead futures. Our data begin in 2012Q4 when policy rates were operating at the zero-lower bound (ZLB). Thus, the size of the raw surprises from 1 month or 3 month futures are small, and insufficient to identify the impact of monetary policy on credit outcomes. To address this issue, we use the 6-month ahead futures contract.¹⁶ To extract the surprise component, we measure price changes of the futures 15 minutes before and 45 minutes after the FOMC.

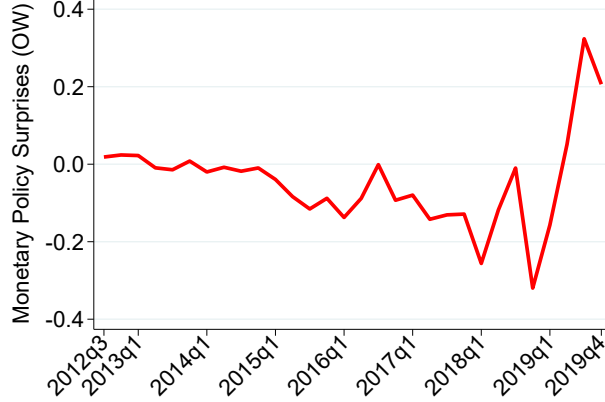
We follow [Ottonello and Winberry \(2020\)](#) and convert the surprise series to a quarterly variable using a weighted moving average of the surprises based on the number of days in the quarter after the surprise has occurred. We plot these in [Figure 9](#) below. This ensures that the surprises are weighted according to the amount of time banks and firms have to react to the changes.

When we analyse the dynamic impulse responses of credit outcomes to policy surprises via local projections, we use these quarterly surprises shown in [Figure 9](#) directly. For the OLS regressions that deliver average effects, we construct 4 and 8-quarter moving averages of the quarterly surprises. The moving average representation allows for monetary policy to have delayed and persistent effects. For example, [Romer and Romer \(2004\)](#) find that monetary policy transmits to real variables and prices with a several quarters' delay and has persistent effects over twenty quarters in the future. Hence, a moving average representation of the quarterly surprises links the surprises to the intermediate-term stance of the monetary policy. Both the surprises and the policy stance were largely expansionary during our sample period.

¹⁵Note that the multiplier becomes quite large for FOMC events at the end of the month. This could magnify measurement errors. When the adjustment factor is greater than 4, we follow [Gürkaynak, Sack, and Swanson \(2005\)](#) and replace the adjustment factor with the rate change in the following month federal futures contract without a multiplier.

¹⁶If we use price changes in 9-month ahead futures or 2-year treasuries, we obtain similar results. These results are available upon request.

Figure 9: Quarterly Monetary Policy Surprises



Note: This figure plots monetary policy surprises in percentage points following the quarterly aggregation of [Ottonello and Winberry \(2020\)](#).

4.2 Econometric Methodology

Our goal is to understand how credit demand and supply factors impact credit growth and pricing and how they interact with the contractual terms under monetary policy changes. Both demand and supply should play a role in equilibrium. Hence, we tackle this both from the firm side and from the bank side. We also investigate loan-level variation under policy changes for a given firm-bank pair.

We start with aggregating all loans between a firm and a bank to the pair level. The two dependent variables are the credit amount borrowed and interest rates paid by firm f and bank b . The demand for credit regressions allow for variation in firm-level leverage and contain bank \times quarter fixed effects to control for variation in bank credit supply. We use firm leverage as [Ottonello and Winberry \(2020\)](#) show that firm leverage is a good proxy for firm default risk, which is informative for borrowing capacity and credit costs. As we have shown above, high and low leverage firms have similar sales and investment growth, hence the impact of monetary policy on these firms' credit demand should also be similar. Thus, any difference between high and low leverage firms in terms of credit borrowed and cost of that credit should be driven by differences in their borrowing capacity that changes with monetary policy shocks with differential changes in financial frictions.

The baseline regression is the following:

$$\log \sum_{l \in \mathcal{L}(f,b,q)} Y_{f,b,q}(l) = \alpha_{f,b} + \alpha_{b,q} + \kappa \left(\mathbf{High\ Leverage\ Firm}_f \times \frac{1}{N} \sum_{k=0}^N \text{MP}_{q-k} \right) + \vartheta_{f,b,q} \quad (2)$$

where $\log \sum_{l \in \mathcal{L}(f,b,q)} Y_{f,b,q}(l)$, is either the total loan amount, \mathcal{L} , or weighted average of one plus the loan interest rate, $(1 + i_{f,b,q})$ for a given bank-firm pair, (b, f) and quarter (q) . Loan interest rates between pairs are computed as a weighted average based on the dollar value of the loan because different loans may have different rates for a given bank-firm pair. $\alpha_{f,b}$ is the firm \times bank fixed effect and $\alpha_{b,q}$ is the bank \times quarter fixed effect, which soak up the cross-sectional variation in banking relationships and time variation in differential bank credit supply. N captures either a 4 or 8-quarter moving average, indexed by k . On the left-hand side, we consider the log of total loans to allow expansionary monetary policy to create new firm entry into the credit market. A Δ log formulation (credit growth for a given firm) restricts the analysis to existing firms throughout the sample, which misses an important monetary policy objective. The interest rate contains a risk-free rate, which is typically LIBOR, plus an idiosyncratic credit spread. Time fixed effects absorb the common risk-free rate, and all remaining variation comes from the idiosyncratic risk spread in the interest rate variable.

Equation (2) is less restrictive than the standard specification used in the bank-lending channel literature. Identifying κ simply requires that banks lend to multiple firms in each quarter, which is always the case. Hence, firms are not dropped and there is no concern about the representativeness of the sample. We also use the methodology introduced by Khwaja and Mian (2008) to identify the effect of credit supply by adding firm \times quarter fixed effects. The identification comes from comparing lending by different banks to the same firm in the same quarter. Specifically, we test for credit supply effects in the following regression:

$$\begin{aligned} \log \sum_{l \in \mathcal{L}(f,b,q)} Y_{f,b,q}(l) = & \alpha_{f,b} + \alpha_{f,q} \\ & + \omega \left(\mathbf{High\ Leverage\ Bank}_b \times \frac{1}{N} \sum_{k=0}^N \text{MP}_{q-k} \right) + \vartheta_{f,b,q} \end{aligned} \quad (3)$$

Equation (3) helps determine if the results from equation (2) are misinterpreted. For example, a negative and statistically significant κ suggests that expansionary monetary policy causes high leverage firms to increase borrowing. However, the additional borrowing could be due to high leverage firms switching to high leverage banks during monetary expansions if those banks extend more credit. Our results based on the regression specification in (3) suggest this is not the case. In addition, specification (3) also allows us to test for risk-taking behavior among banks.

The leverage variable in both specifications is time-invariant to ensure that leverage is measured before the monetary policy surprise shock. Specifically, ‘High Leverage Firm/Bank’

is a dummy equal to one for firms/banks with average leverage higher than the median leverage in the sample, and zero otherwise. Moreover, we use two leverage measures: short term debt to total assets and total debt to total assets, yielding similar results.

Finally, to investigate the role of loan-specific collateral, we run:

$$\log Y_{l,f,b,q} = \alpha_{f,b,q} + \beta \text{Collateral Type}_{l,q} + \lambda(\text{Collateral Type}_{l,q} \times \text{MP}_q) + \vartheta_{l,f,b,q} \quad (4)$$

where we use loan-level quantities and interest rates without aggregating to the firm-bank pair level. This is a restrictive specification that uses firm \times bank \times quarter fixed effects, $\alpha_{f,b,q}$. Identification with triple fixed effects requires multiple loans over time for a given firm-bank pair. Over 50 percent of our firms have multiple loans from their banks. We want to capture both new and existing loans with different types of collateral. Therefore, when estimating λ , we allow collateral to vary contemporaneously with the monetary policy surprise shock and control for the direct effect through β since it cannot be absorbed by the fixed effects.

4.3 The Role of Firm Leverage in Credit Outcomes

Table 6 shows the baseline credit demand results for quantity (columns (1)-(3)) and price (columns (4)-(6)). Columns (1) and (4) show that a surprise monetary expansion leads more levered firms to borrow more at higher spreads, consistent with improved borrowing capacity and increased credit demand.¹⁷ The interpretation that the effects are demand driven is supported by two observations. First, prices and quantities move in the same rather than opposite direction. Second, including bank \times time fixed effects absorbs supply side variation and allows variation in demand to drive the results. We interpret the relatively higher cost of credit (higher spreads) for high leverage firms as purely a credit demand driven effect under the assumption that monetary expansions reduce spreads of all firms. The higher cost of credit can also simply reflect the higher default risk of these firms. It is also possible that an expansionary policy reduces spreads more for low leverage firms. Our collateral results in Section 4.5 will help sort out the exact mechanism underlying these results.

The aggregate results in columns (1) and (4) are entirely driven by private rather than public borrowers. Columns (3) and (6) show that credit demand among public firms does not respond differently to monetary policy surprises based on their leverage, though highly levered public firms borrow at lower cost, opposite of the private firm result. If these public firms respond less to monetary expansions due to their higher default risk, as shown by

¹⁷Similar results are obtained using total loan utilization rather than commitments; the coefficient is -0.7852 and a std. deviation of 0.175 on the interaction term of high leverage and MP surprises in all U.S. firms sample.

Ottonello and Winberry (2020), then it is not surprising that they borrow at lower cost, as this result would be driven by their lower demand.

Table 6: Monetary Policy and Credit Outcomes: The Role of Firm Leverage

	Quantity: $\text{Log}(\text{Loan})$			Price: $\text{Log}(1+i)$		
	(1) All	(2) Private	(3) Public	(4) All	(5) Private	(6) Public
High Leverage Firm \times MP Surprise _q	-0.4212*** (0.0772)	-0.8478*** (0.1221)	-0.0498 (0.2075)	-0.0262*** (0.0027)	-0.0395*** (0.0035)	0.0156** (0.0046)
Observations	2460475	2140482	319985	2472261	2150197	322056
Adjusted R^2	0.945	0.939	0.837	0.768	0.768	0.676
Bank \times Firm F.E.	Yes	Yes	Yes	Yes	Yes	Yes
Bank \times Time F.E.	Yes	Yes	Yes	Yes	Yes	Yes
Firm \times Time F.E.	No	No	No	No	No	No

Note: + $p < 0.1$, * $p < 0.05$, ** $p < 0.01$, *** $p < 0.001$. This table presents OLS estimates of (2) at the bank-firm level at a quarterly frequency. Interest rates are weighted by the loan shares for a given firm-bank. High Leverage Firm is a dummy equal to one for firms with leverage (measured with short-term debt) above the sample median. Double-clustered standard errors by firm and time are reported in parentheses.

To confirm the results are driven by highly leveraged SMEs rather than unobserved differences between private and public firms, we run the regression equation (2) on the full sample of Y-14 firms and cut the sample on size and leverage to show their importance. Specifically, we define a time-invariant SME dummy equal to one if the average firm’s revenue over the sample is less than \$50 million. The high leverage dummy is defined as before. The specification also includes the triple interaction term of high leverage, SME, and the monetary policy surprise.

Table 7 shows the results. The last row in the table shows that our baseline result is indeed driven by leveraged SMEs. Expansionary monetary policy raises SME borrowing capacity and credit demand. In particular, the significance of the interaction of leverage and monetary policy almost disappears moving from column (1) to (3). Column (6) shows that leveraged SMEs pay even higher spreads than leveraged large firms during monetary expansions, indicative of higher SME credit demand. Interestingly, the coefficient of the interaction between the SME dummy and monetary policy surprise indicates that SMEs borrow and pay less than large firms as a result of monetary policy easing, which suggests SMEs face tighter borrowing constraints and demand less credit in equilibrium than large firms. Overall, the results show that expansionary monetary policy has a particular effect on the borrowing capacity and credit demand of leveraged SMEs that is not *ex-ante* obvious. Section 4.5 digs deeper on financial frictions to provide further support on why leveraged SMEs credit demand and borrowing capacity expands in spite of their higher default risk.

Table 7: Monetary Policy and Credit Outcomes: The Role of Leverage and Size

	Quantity			Prices		
	(1) Log(Loan)	(2) Log(Loan)	(3) Log(Loan)	(4) Log(1+i)	(5) Log(1+i)	(6) Log(1+i)
High Leverage Firm \times MP Surprise _q	-0.4212*** (0.0772)		-0.1503+ (0.0856)	-0.0262*** (0.0027)		-0.0189*** (0.0026)
SME \times MP Surprise _q		0.5530*** (0.1012)	1.0737*** (0.1984)		0.0140*** (0.0014)	0.0288*** (0.0028)
High Leverage Firm \times SME \times MP Surprise _q			-0.7368*** (0.1633)			-0.0199*** (0.0032)
Observations	2460475	2460475	2460475	2472261	2472261	2472261
Adjusted R ²	0.945	0.945	0.945	0.768	0.767	0.768
Bank \times Firm F.E	Yes	Yes	Yes	Yes	Yes	Yes
Bank \times Time F.E	Yes	Yes	Yes	Yes	Yes	Yes

Note: + $p < 0.1$, * $p < 0.05$, ** $p < 0.01$, *** $p < 0.001$. This table presents results for the OLS regressions for bank-firm pairs using quarterly data for the all sample. The dependent variable in columns (1)-(3) is the natural logarithm of the total committed loan amount for a bank-firm pair; the dependent variable in columns (4)-(6) is the natural logarithm of one plus the nominal interest rate weighted for loan shares for a given bank-firm pair. *SME* is a dummy indicating whether a firm is a SME (less than 50 millions in net sales) or non-SME. *High Leverage Firm* is a dummy indicating whether a firm is in the “low” (= 0) or “high” (= 1) bin of firms defined by their average leverage ratio over the sample period. Double-clustered standard errors by firm and time are reported in parentheses.

4.4 Dynamic Effects of Monetary Policy on Credit Outcomes

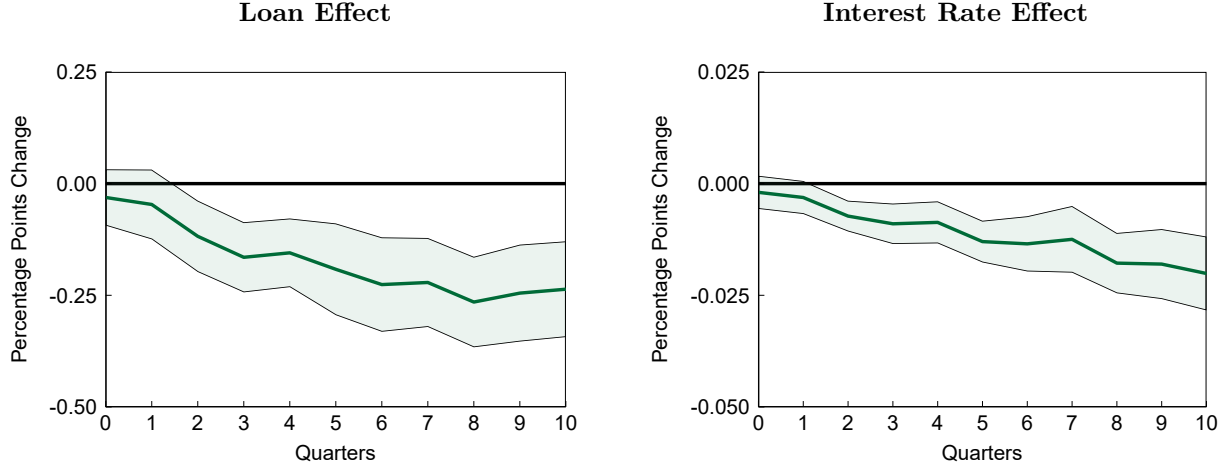
We estimate the dynamic response of credit outcomes to monetary policy surprises through the following local projections:

$$\log \sum_{l \in \mathcal{L}(f,b,q+h)} Y_{f,b,q+h}(l) = \alpha_{f,b} + \alpha_{b,q} + \kappa_h (\text{High Leverage Firm}_f \times \text{MP}_{q-k}) + \vartheta_{f,b,q+h} \quad (5)$$

Figure 10 shows the results for the full sample of firms. The expansionary effects of monetary policy on credit quantities and prices for leveraged firms are highly persistent, lasting 10 quarters. Figures 11 and 12 decompose these effects for private and public firms. The results clearly show that the overall effects are driven by private firms, both for loan quantities and prices. An expansionary (contraction) surprise leads to more (less) borrowing and higher (lower) spreads for leveraged private firms. The results for leveraged public firms are insignificant.

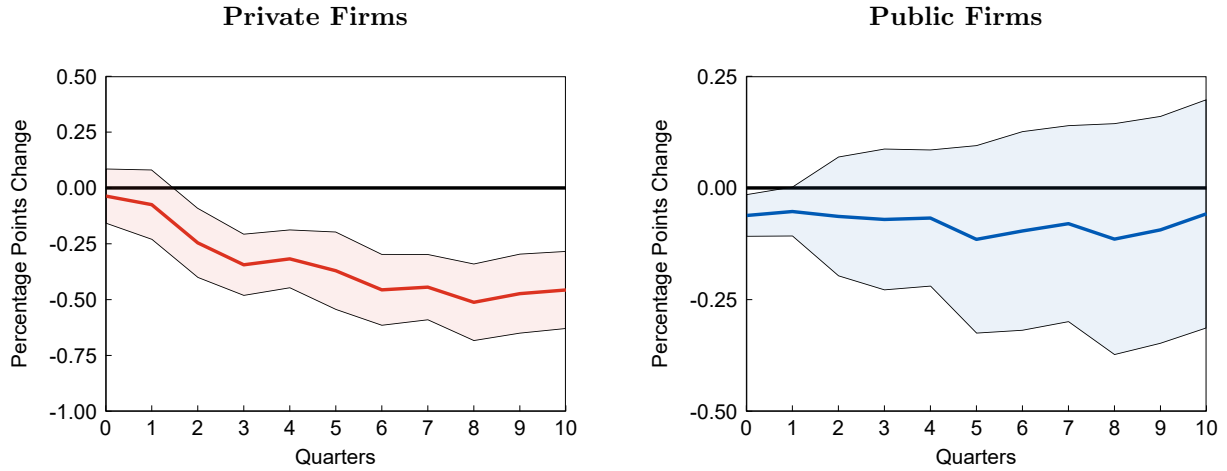
Figure 13 shows the dynamic triple interaction that include the leverage and SME dummy variables. The results are also persistent, especially on loan quantities. Highly leveraged SMEs borrow and pay more in response to expansionary monetary policy surprises over 10 quarters. In particular, a 1 basis point expansionary surprise causes high leveraged SMEs to borrow 0.4 percentage points (pp) more over 10 quarters relative to larger, safer firms. Credit spreads are 0.02 pp higher for highly levered SMEs relative to others over this period.

Figure 10: Dynamic Effects of Monetary Policy on High Leveraged Firms



Note: The figure shows the dynamics of the interaction coefficient, κ_h , between firm leverage and monetary shocks over time, over quarter h from equation (5). Black lines report 95 percent error bands.

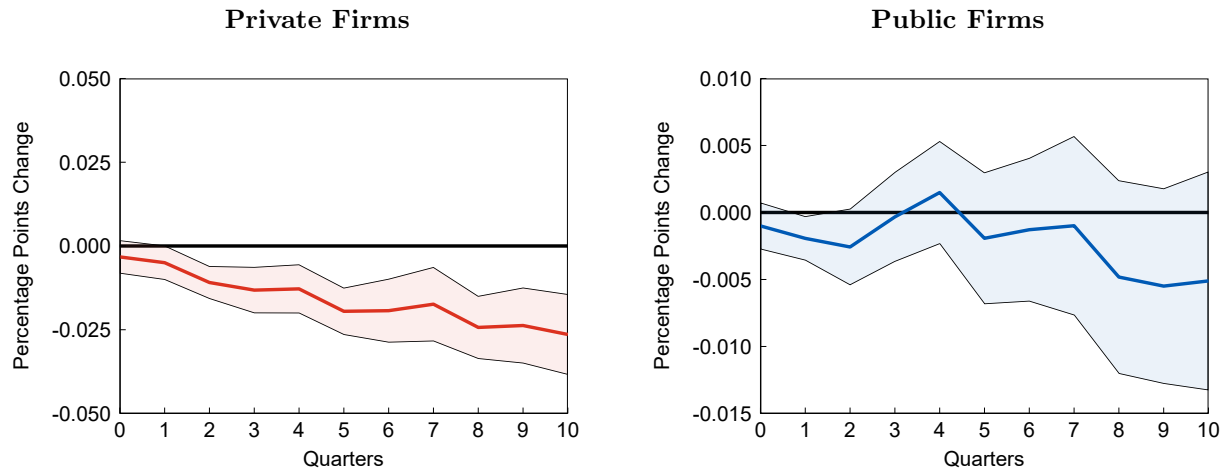
Figure 11: Dynamic Effects of Monetary Policy on Loans to High Leveraged Firms by Firm Type



Note: The figure shows the dynamics of the interaction coefficient, κ_h , between firm leverage and monetary shocks over time, over quarter h from equation (5), for private and public firms. Black lines report 95 percent error bands.

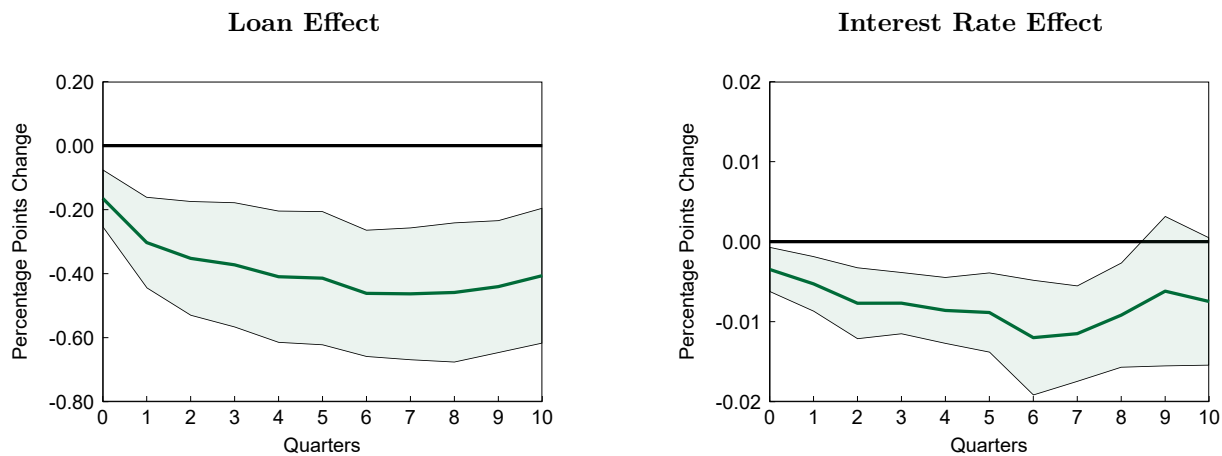
All these dynamic results are based on identified relative effects. If we want to know the aggregate time series patterns, we can simply plot the borrowing costs for different types of firms (credit growth has increased overall in this period). Figure 14 plots interest rates for the typical public and private borrower. Public firms borrow at lower interest rates, as shown by the blue line in the first chart on the left. The middle and right charts show median interest rates by loan and rate type (fixed versus floating rate loans and credit lines versus term loans) for private and public firms. Floating rate loans (dashed lines) track monetary policy rates for both borrower types. By contrast, fixed-rate loans declined both for private

Figure 12: Dynamic Effects of Monetary Policy on Interest Rates of High Leveraged Firms by Firm Type



Note: The figure shows the dynamics of the interaction coefficient, κ_h , between firm leverage and monetary shocks over time, over quarter h from equation (5), for private and public firms. Black lines report 95 percent error bands.

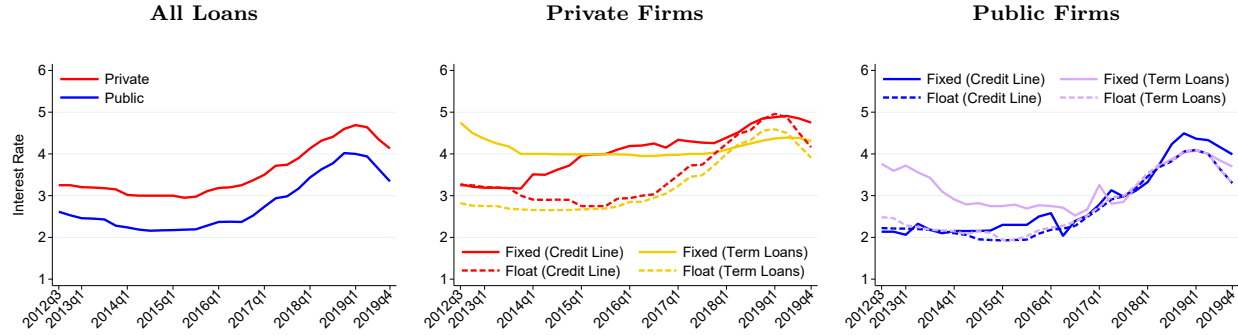
Figure 13: Dynamic Effects of Monetary Policy on High Leveraged SMEs



Note: The figure shows the dynamics of the interaction coefficient, κ_h , between firm leverage and monetary shocks over time, over quarter h from equation (5), for private and public firms. Black lines report 95 percent error bands.

firms (solid gold line) and for public borrowers (solid purple line) before increasing in 2017. Figure 15 focus on rates only for new loan originations and suggest that floating rate credit line prices rose faster during rate lift-off. This might have induced a compositional change as we show in Figure 22 in the Appendix: the share of term loans among all loans has increased nearly 7 percent while the share of floating rate loans has fallen nearly 10 percent during our sample period. In order to shield our results from such compositional effects, we use all types of loans.

Figure 14: Interest rates: Fixed versus Floating



Note: The figure plots the median interest rates (in percent). The first chart plots interest rates for all loans for private borrowers in red and public borrowers in blue. The middle chart plots median interest rate for private borrowers for different loan types and rates. Solid lines plot rate on fixed rate loans (credit lines in red and term loans in gold). The dashed lines are rate on floating rate loans (credit lines in red and term loans in gold). The right chart plots median interest rate for public borrowers for different loan types and rates. Solid lines plot rate on fixed rate loans (credit lines in blue and term loans in purple). The dashed lines are rate on floating rate loans (credit lines in blue and term loans in purple). Source: FR Y-14Q H.1.

Figure 15: Interest rates on New Originations



Note: The figure plots the median interest rate (in percent) for new loan origination broken out by credit lines, term loans with fixed versus floating rates. The chart on the left plots the various loan rates for private borrowers on the left and public borrowers on the right. The solid lines are fixed rate loans and the dashed lines are floating rate loans. Source: FR Y-14Q H.1.

4.5 The Role of Earnings & Operations Based Collateral in Credit Outcomes

The results so far show that expansionary monetary policy surprises increase the borrowing capacity of leveraged SMEs, in spite of higher default risk. In this section we explore the

mechanism. Following [Kiyotaki and Moore \(1997\)](#), many papers show that financial frictions, in the form of collateral constraints, impact monetary policy transmission and can amplify business cycle fluctuations. In this class of models, firm borrowing is collateralized by a fraction of the resale value of the capital stock in the next period. Monetary policy changes impact asset values and hence the resale value, expanding and shrinking firm borrowing capacity. However, [Lian and Ma \(2020\)](#) and [Kermani and Ma \(2021\)](#) show that the book value of publicly listed firm debt is much larger than the resale or recovery value of their assets. The collateral information reported in the FR Y-14 data allows us to test the impact of monetary policy on credit growth and pricing via *relaxation/tightening* of collateral constraints based on the different types of collateral pledged to obtain a loan.

We begin by running the regression equation (4) using a collateral dummy variable equal to one if the loan is collateralized and zero otherwise, regardless of the *type* of collateral pledged. The results highlight a stark difference in the way that pledging collateral interacts with access to and pricing of credit across firm types. Tables 8 and 9 show that for private borrowers, collateralizing a loan is associated with improved access to credit and lower prices. The opposite is true for public borrowers: collateralization is associated with lower loan amounts and higher prices. The first row in each table captures the effect of collateralizing a loan during normal times, using different sets of fixed effects. The results show that the positive (negative) association between collateral and loan quantity (price) holds regardless of which fixed effects are included. Hence, the results are robust to variation coming from demand or supply side.

To assess the impact of monetary policy on demand and supply of credit, we interact the collateral dummy variable with the policy surprises. The results are shown in the second row of Table 8 and 9. The negative coefficient of the interaction term in the first three columns of Table 8 implies that expansionary monetary policy strengthens the ‘access to finance’ effect of collateralizing loans for private firms. The negative coefficient on the interaction term for the last three columns indicates that effect of collateral in reducing prices is lower during monetary expansions. In other words, firms can pledge less collateral to lower spreads during expansions. The result should not be surprising because monetary policy narrowed spreads significantly during this period.

Table 9 shows that, for public firms, expansionary policy mitigates but does not reverse the negative relationship between collateral and credit. Moreover, expansionary monetary policy amplifies the positive relation between collateral and spreads. Public firms who pledge collateral borrow less and pay higher spreads in response to expansionary monetary policy surprises. The impact on credit spreads is stronger in the firm credit demand regression (column (4)). The interpretation is that distressed public firms pay higher spreads if their

credit demand increases. Given that most public firms borrow unsecured, the higher cost of secured credit most likely reflects the monitoring costs associated with secured debt.

Table 8: Monetary Policy and Loan Level Outcomes: Private Firms

	<i>Quantity</i>			<i>Prices</i>		
	(1) Log (Loan)	(2) Log (Loan)	(3) Log (Loan)	(4) Log (1 + i)	(5) Log (1 + i)	(6) Log (1 + i)
Collateralized _q	0.2888*** (0.0353)	0.3467*** (0.0523)	0.4181*** (0.0606)	-0.0023*** (0.0005)	-0.0045*** (0.0009)	-0.0058*** (0.0012)
Collateralized _q × MP Surprise _q	-0.9698*** (0.1719)	-2.1818*** (0.3730)	-2.3107*** (0.4394)	-0.0130*** (0.0033)	-0.0190* (0.0073)	-0.0264* (0.0105)
Observations	2984365	1563912	1371794	3128248	1564644	1377795
Adjusted R^2	0.724	0.454	0.282	0.634	0.428	0.357
Bank×Firm F.E	Yes	Yes	No	Yes	Yes	No
Bank×Time F.E	Yes	No	No	Yes	No	No
Firm×Time F.E	No	Yes	No	No	Yes	No
Bank×Firm×Time F.E	No	No	Yes	No	No	Yes

Note: ⁺ $p < 0.1$, * $p < 0.05$, ** $p < 0.01$, *** $p < 0.001$. This table presents the results of OLS regressions for the effect of collateral using loan level data at a quarterly frequency, for private firm sample. The dependent variable in columns (1) through (3) is the natural logarithm of the total committed loan amount; the dependent variable in columns (4) through (6) is the natural logarithm of the nominal real interest rates. *Collateralized_q* is a dummy variable equal to one if the loan is collateralized, and zero otherwise. Double-clustered standard errors by firm and time are reported in parentheses.

Table 9: Monetary Policy and Loan Level Outcomes: Public Firms

	<i>Quantity</i>			<i>Prices</i>		
	(1) Log (Loan)	(2) Log (Loan)	(3) Log (Loan)	(4) Log (1 + i)	(5) Log (1 + i)	(6) Log (1 + i)
Collateralized _q	-0.6190*** (0.0481)	-0.6384*** (0.0490)	-0.8910*** (0.0770)	0.0074*** (0.0006)	0.0081*** (0.0006)	0.0108*** (0.0009)
Collateralized _q × MP Surprise _q	-0.6125* (0.2575)	-0.4756 (0.3938)	-2.0066* (0.7709)	-0.0233*** (0.0050)	-0.0157* (0.0069)	-0.0092 (0.0100)
Observations	644446	634710	485440	639445	629677	481327
Adjusted R^2	0.506	0.490	0.284	0.479	0.513	0.378
Bank×Firm F.E	Yes	Yes	No	Yes	Yes	No
Bank×Time F.E	Yes	No	No	Yes	No	No
Firm×Time F.E	No	Yes	No	No	Yes	No
Bank×Firm×Time F.E	No	No	Yes	No	No	Yes

Note: ⁺ $p < 0.1$, * $p < 0.05$, ** $p < 0.01$, *** $p < 0.001$. This table presents the results of OLS regressions of the effect of collateral using loan level data at a quarterly frequency, for the public firm sample. The dependent variable in columns (1) through (3) is the natural logarithm of the total committed loan amount ; the dependent variable in columns (4) through (6) is the natural logarithm of the nominal real interest rates. *Collateralized_q* is a dummy variable equal to one if the loan is collateralized, and zero otherwise. Double-clustered standard errors by firm and time are reported in parentheses.

The next set of results replace the single collateral dummy with dummies for different collateral categories. Each dummy is equal to one when a loan is collateralized with that type

of collateral and zero otherwise. To reduce the number of the categories, we combine fixed assets with real estate collateral because they represent physical assets. The ‘unsecured’ category remains omitted.

The results are reported in Table 10 for private firms and in Table 11 for public firms. For private firms, the result that collateralizing improves access to credit at a lower price is associated with three types of collateral, regardless of fixed effects: cash, AR&I, and blanket liens. We argue that the values of these three types of collateral are inextricably linked to firm earnings and operations. During monetary expansions, the access to finance effect comes from AR&I and blanket lien collateral, though fixed assets and real estate collateral also improve access to finance in the supply regression and when using within-loan variation. In terms of spreads, pledging AR&I collateral reduces loan spreads during monetary expansions, showing the importance of operations-based collateral.

For public firms, Table 11 shows that all collateral types signal distress—less credit and higher spreads—regardless of which fixed effects are included. During monetary policy expansions, pledging cash, AR&I, and blanket liens mitigates the negative impact on loan quantities—there is no effect coming from fixed assets and real estate. That said, the total effect shows that public firms borrow less when pledging all types of collateral during expansions (relative to unsecured). Finally, the effect on spreads is amplified when pledging blanket lien and AR&I collateral. In other words, public firms pay higher spreads during monetary expansions when they pledge these types of collateral. Pledging cash, fixed assets, and real estate during monetary expansions partially mitigates the negative distress effect.

The collateral-type results suggest “collateral pecking order”. For both sets of firms, AR&I and blanket liens seem to be the most valuable collateral-types, and they work exactly the same way. Importantly, for private firms, these two types of collateral drive all the access to finance results. Why is this the case?

The values of AR&I and blanket lien collateral are both tied to firm earnings and operations in an important way that other fixed assets, such as real estate and machines, are not. In particular, the values of AR&I and blanket lien collateral are not derived from resale value or what lenders can recover in a spot market transaction, which is where the value of fixed assets and real estate lie.¹⁸ Consider one-period debt as in (Kiyotaki and Moore, 1997) where the relationship between collateral value and borrowing is determined by the

¹⁸According to the standard industry dichotomy, loans secured by AR&I are technically asset-based loans because the advance rate on the loan is based on a fraction of the book value of receivables rather than the future value of receipts. The advance rate for accounts receivable is generally much higher (up to 85 percent of book value) than the advance rate for inventory (only up to 65 percent), which largely reflects differences in the liquidity of the assets. However, most AR&I loans are tied to the “AR” rather than the “I” (See the documentation in the OCC *Comptroller’s Handbook on Asset-Based Lending*).

Table 10: The Role of Collateral: Private Firms

	Quantity			Prices		
	(1) Log (Loan)	(2) Log (Loan)	(3) Log (Loan)	(4) Log (1 + i)	(5) Log (1 + i)	(6) Log (1 + i)
Fixed assets and real estate _q	0.0362 (0.0324)	-0.0298 (0.0433)	0.0332 (0.0494)	0.0015** (0.0005)	0.0009 (0.0009)	-0.0000 (0.0012)
Cash and marketable sec. _q	0.2225*** (0.0361)	0.3331*** (0.0536)	0.3270*** (0.0713)	-0.0049*** (0.0006)	-0.0070*** (0.0010)	-0.0093*** (0.0013)
Act. receiv. and inventory _q	0.5424*** (0.0406)	0.7790*** (0.0509)	0.8924*** (0.0535)	-0.0046*** (0.0006)	-0.0082*** (0.0010)	-0.0102*** (0.0013)
Blanket lien and other _q	0.3668*** (0.0332)	0.4817*** (0.0431)	0.5787*** (0.0514)	-0.0024*** (0.0005)	-0.0046*** (0.0008)	-0.0053*** (0.0010)
Fixed assets and real estate _q × MP Surprise _q	-0.0606 (0.0811)	-1.0468*** (0.2082)	-1.1313** (0.2485)	-0.0008 (0.0017)	-0.0107* (0.0051)	-0.0178* (0.0072)
Cash and marketable sec. _q × MP Surprise _q	-0.1948 (0.1258)	-0.9140** (0.2931)	-0.7354+ (0.4310)	0.0009 (0.0026)	-0.0040 (0.0062)	-0.0054 (0.0093)
Act. receiv. and inventory _q × MP Surprise _q	-1.0223*** (0.1391)	-2.1088*** (0.3011)	-2.3031*** (0.3342)	-0.0118*** (0.0026)	-0.0135* (0.0052)	-0.0227** (0.0077)
Blanket lien and other _q × MP Surprise _q	-0.5070*** (0.1064)	-0.9747*** (0.2348)	-0.6990* (0.3015)	-0.0018 (0.0018)	-0.0105* (0.0045)	-0.0120+ (0.0065)
Observations	2650313	1362500	1192230	2781417	1365280	1199252
Adjusted R ²	0.734	0.472	0.307	0.647	0.442	0.376
Bank×Firm F.E	Yes	Yes	No	Yes	Yes	No
Bank×Time F.E	Yes	No	No	Yes	No	No
Firm×Time F.E	No	Yes	No	No	Yes	No
Bank×Firm×Time F.E	No	No	Yes	No	No	Yes

Note: + $p < 0.1$, * $p < 0.05$, ** $p < 0.01$, *** $p < 0.001$. This table presents the results of OLS regressions of the effect of collateral type using loan level data at a quarterly frequency, for the private firm sample. The dependent variable in columns (1) through (3) is the natural logarithm of the total committed loan amount ; the dependent variable in columns (4) through (6) is the natural logarithm of the nominal real interest rates. The dependent variables are dummy variables equal to one if the loan is collateralized by specific type of collateral, zero otherwise; we drop the category “Unsecured”. The coefficients for the collateral types are calculated but not displayed. Double-clustered standard errors by firm and time are reported in parentheses.

standard borrowing constraint $Rb_t \leq q_{t+1}k_{t+1}$, where Rb_t is the gross repayment amount on borrowing at time t and k_{t+1} and q_{t+1} are the holdings and price of capital in following period. The subtle but important distinction between tangible assets, such as real estate and machines, and AR&I embedded in the capital stock, k_{t+1} , is that the book value of AR&I collateral only exists because of the firm’s ability to create sales that generate the receivables and inventory. In other words, the operations of the firm combine intellectual property, managerial talent, marketing, etc. to generate sales and the receipts that serve as collateral. The firm does not purchase this collateral like machines or land, it creates it.

The inability to separate the liquidation value of AR&I from the going-concern value embedded in blanket liens is particularly important for small private borrowers who do not have large amounts of other tangible fixed assets to pledge. In these cases, blanket liens are thus close substitutes for AR&I that also give the lender additional security.¹⁹ Using

¹⁹This intuition that blanket liens and AR&I collateral are substitutes is confirmed in an interview with the CFO of a medium-sized private company, with annual sales of nearly \$70mn. They note that in their multiple loan facilities with a large bank, their working capital loans (a standard term for AR&I loans) are

Table 11: The Role of Collateral: Public Firms

	Quantity			Prices		
	(1) Log (Loan)	(2) Log (Loan)	(3) Log (Loan)	(4) Log (1 + i)	(5) Log (1 + i)	(6) Log (1 + i)
Fixed assets and real estate _q	-1.4410*** (0.0609)	-1.4400*** (0.0703)	-1.8022*** (0.0757)	0.0178*** (0.0009)	0.0174*** (0.0009)	0.0219*** (0.0011)
Cash and marketable sec. _q	-0.5642*** (0.0633)	-0.5283*** (0.0697)	-0.7002*** (0.1222)	0.0034** (0.0011)	0.0048*** (0.0011)	0.0060** (0.0020)
Act. receiv. and inventory _q	-0.1679* (0.0690)	-0.2192** (0.0756)	-0.2921* (0.1187)	0.0032*** (0.0007)	0.0036*** (0.0008)	0.0028* (0.0013)
Blanket lien and other _q	-0.3759*** (0.0483)	-0.3934*** (0.0505)	-0.5355*** (0.0913)	0.0045*** (0.0005)	0.0052*** (0.0005)	0.0073*** (0.0009)
Fixed assets and real estate _q × MP Surprise _q	1.0635* (0.4006)	0.9617+ (0.5166)	-0.3164 (0.8001)	0.0139 (0.0097)	0.0060 (0.0105)	0.0275* (0.0127)
Cash and marketable sec. _q × MP Surprise _q	-1.7177** (0.5340)	-1.6142* (0.6360)	-2.5546+ (1.4276)	0.0041 (0.0102)	0.0216+ (0.0116)	0.0760** (0.0246)
Act. receiv. and inventory _q × MP Surprise _q	-1.7494*** (0.3921)	-2.8136*** (0.5887)	-5.5757*** (1.1364)	-0.0399*** (0.0055)	-0.0287*** (0.0072)	-0.0465** (0.0134)
Blanket lien and other _q × MP Surprise _q	-0.7591* (0.3102)	-1.1205* (0.4592)	-2.2961* (0.9398)	-0.0333*** (0.0047)	-0.0226** (0.0065)	-0.0203+ (0.0116)
Observations	644446	634710	485440	639445	629677	481327
Adjusted R^2	0.538	0.523	0.339	0.491	0.525	0.398
Bank×Firm F.E	Yes	Yes	No	Yes	Yes	No
Bank×Time F.E	Yes	No	No	Yes	No	No
Firm×Time F.E	No	Yes	No	No	Yes	No
Bank×Firm×Time F.E	No	No	Yes	No	No	Yes

Note: + $p < 0.1$, * $p < 0.05$, ** $p < 0.01$, *** $p < 0.001$. This table presents the results of OLS regressions of the effect of collateral type using loan level data at a quarterly frequency, for the public firm sample. The dependent variable in columns (1) through (3) is the natural logarithm of the total committed loan amount ; the dependent variable in columns (4) through (6) is the natural logarithm of the nominal real interest rates. The dependent variables are dummy variables equal to one if the loan is collateralized by specific type of collateral, zero otherwise; we drop the category “Unsecured”. The coefficients for the collateral types are calculated but not displayed. Double-clustered standard errors by firm and time are reported in parentheses.

the trees/machines and fruit/engineers metaphor of [Kiyotaki and Moore \(1997\)](#), fixed assets and real estate are the trees or the machines that firms purchase from one another in the spot market and borrow against for production. Within the firm, managerial know-how and engineers’ ability to use tools combines with the machines to generate output or fruit. Hence, AR&I and blanket lien collateral are different from trees/machines, and *are frequently* used as collateral. Thus, the tree’s fruit is not bruised and unusable; it becomes compost providing additional nutrients to generate additional future fruit. In sum, it is not the recovery or liquidation value of AR&I that is important; it is the fact that the value cannot exist outside of firm production.²⁰

secured by a blanket lien on the firm assets, and not just the AR&I.

²⁰Based on our interviews with SME CEOs, we observe the following: Accounts receivable (AR) account for 20 percent of annual sales among firms with \$50-100 million in annual sales. When obtaining working capital loans with “AR&I” collateral, they submit weekly AR and inventory reports to the bank. This means that if they obtain a \$1 million revolver now and their AR continues to increase, then they will be eligible for a new revolver with a higher limit. Eligible AR collateral for loans is generally given 60 days in advance, which means that eligible AR collateral that is booked now must be paid within 60 days.

Based on our results shown in above tables and this narrative, we group AR&I with blanket liens in Figure 16 as ‘Earnings and Operations Based Collateral’ in light blue. The figure makes clear that, for SMEs and private firms, earnings and operations based collateral dominates all others. The category depicted in orange is real estate and fixed assets. The unsecured category stays in dark blue and cash and marketable securities is in yellow. With this grouping, we create a new dummy variable for ‘Earnings and Operations Based Collateral’ and horse-race it against ‘Asset Based Collateral’ comprising of fixed assets and real estate. We rerun our regressions with these two categories, leaving ‘unsecured’ as the omitted category.

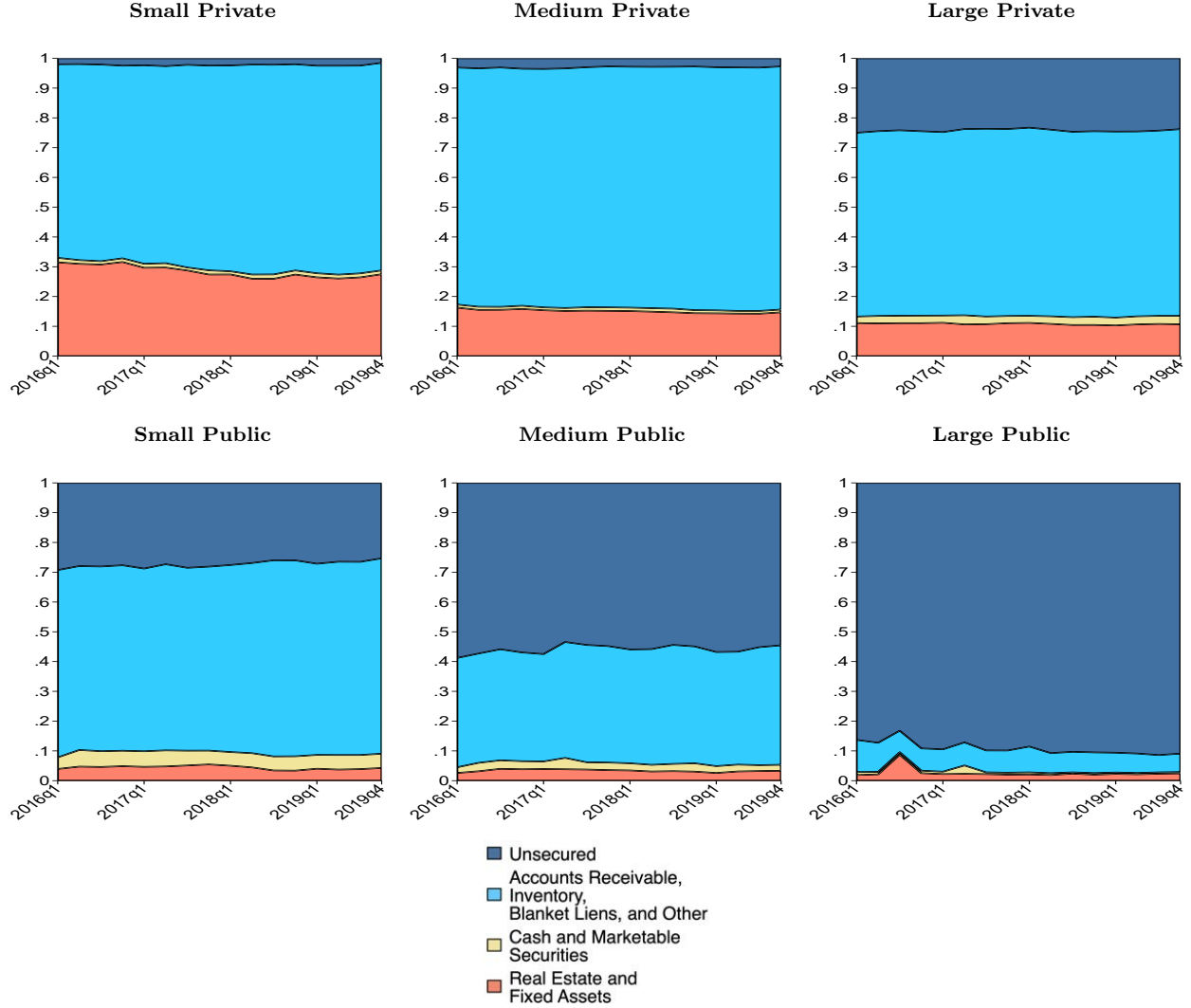
The results are shown in Tables 12 and 13 for private and public firms, respectively. The second row of Table 12 shows clearly that, among private firms, ‘Earnings and Operations Based Collateral’ drive the access to credit and pricing results. These results hold regardless of what fixed effects are included. The fourth row of the table shows that the expansionary monetary policy effects are driven by this collateral on the pricing side. ‘Asset Based Collateral’ also has an access to finance role for private firms during monetary expansions, as shown in columns (2) and (3), when bank credit supply variation is used. This is expected since these firms are financially constrained and any collateral will act as a tool for access to finance. However, the impact of ‘Earnings and Operation Based Collateral’ is stronger because smaller firms do not have sufficient quantities of fixed assets to fully relax their borrowing constraints.

The first two rows of Table 13 show that, for public firms, both types of collateral signal distress. Expansionary monetary policy ameliorates the distress problem, shown in the last row of Table 13, but does not completely reverse it and only for loan quantities when pledging ‘Earnings and Operations Based Collateral’. In terms of spreads, both during normal times and monetary expansions, public firms who pledge collateral pay higher spreads than firms who borrow unsecured, signalling distress and the cost to monitor secured claims.

The fact that the relationship between pledging collateral and spreads is the opposite for private versus public firms strengthens our argument that collateral is a measure of access to finance for private firms and signals default risk for public firms.²¹ Collateral signals default risk for public borrowers because, otherwise, they are not financially constrained, while small, private firms are. The existing empirical literature finds mixed results on the relation between collateral and spreads, which is due to using different samples of firms and banks. For example, [Berger and Udell \(1990\)](#) use bank-level data and show that collateralized

²¹Very small private firms who lack collateral cannot access credit as they are screened out of the market as in [Darst, Refayet, and Vardoulakis \(2020\)](#). Although we do not observe this extensive margin, as our data is on firms who borrow, our results show that the same intuition works at the intensive margin.

Figure 16: Collateral Type: Public vs. Private (Based on Values)



Note: The figure plots the proportion of loans by value secured by different collateral types over time. The different types of collateral are real estate and fixed assets (in red); cash and marketable securities (in yellow); accounts receivable, inventory, and blanket liens (in light blue); and unsecured loans (in dark blue). The top three panels from left to right show the proportion of loans secured by the different collateral types and unsecured for private borrowers in the bottom quartile of assets (small), between the bottom and top quartile of assets (medium), and above the top quartile of assets (large). As an example, we add up the value of all loans for firms below the bottom quartile ($Total\ Loan_t$). We then add up the value of all loans for firms within each quartile and loan category ($Total\ Loan_{ct}$). The graph shows at each point in time the share of loan value accounted for each category $Share_{ct} = Total\ Loan_{ct} / Total\ Loan_t$. The bottom three panels present the same information for public borrowers. Source: FR Y14-Q H.1.

loans have higher interest rates in the U.S. [Berger, Frame, and Ioannidou \(2016\)](#) show the same result in Bolivia. [di Giovanni, Kalemli-Ozcan, Ulu, and Baskaya \(2019\)](#) find the same negative relation as us using data on the universe of firms from Turkey. [Luck and Santos \(2019\)](#), also using FR Y-14 data, show that small firms who post collateral pay lower rates. Using publicly listed firms, [Rauh and Sufi \(2010\)](#) shows that there is a positive relation between posting collateral and being a low quality firm in distress.

Table 12: The Role of Collateral: Private Firms

	<i>Quantity</i>			<i>Prices</i>		
	(1) Log(Loan)	(2) Log(Loan)	(3) Log(Loan)	(4) Log(1+i)	(5) Log(1+i)	(6) Log(1+i)
Asset-based	0.0544 ⁺ (0.0301)	-0.0204 (0.0458)	0.0278 (0.0546)	0.0009 ⁺ (0.0005)	-0.0001 (0.0009)	-0.0010 (0.0012)
Earnings & Operations-based	0.4106*** (0.0402)	0.5765*** (0.0545)	0.6912*** (0.0608)	-0.0038*** (0.0005)	-0.0067*** (0.0009)	-0.0085*** (0.0012)
Asset-based \times MP _q	-0.1172 (0.1277)	-1.5071*** (0.3319)	-1.5839*** (0.4050)	-0.0021 (0.0031)	-0.0165* (0.0077)	-0.0260* (0.0107)
Earnings & Operations-based \times MP _q	-1.4829*** (0.2144)	-2.5766*** (0.4032)	-2.5402*** (0.4689)	-0.0173*** (0.0035)	-0.0203* (0.0074)	-0.0293* (0.0107)
Observations	2984365	1563912	1371794	3128248	1564644	1377795
Adjusted R^2	0.731	0.474	0.310	0.635	0.435	0.366
Bank \times Firm F.E.	Yes	Yes	No	Yes	Yes	No
Bank \times Time F.E.	Yes	No	No	Yes	No	No
Firm \times Time F.E.	No	Yes	No	No	Yes	No
Bank \times Firm \times Time F.E.	No	No	Yes	No	No	Yes

Note: ⁺ $p < 0.1$, * $p < 0.05$, ** $p < 0.01$, *** $p < 0.001$. This table presents the results of OLS regressions of the effect of collateral type using loan level data at a quarterly frequency, for the private firm sample. The dependent variable in columns (1) through (3) is the natural logarithm of the total committed loan amount ; the dependent variable in columns (4) through (6) is the natural logarithm of the nominal real interest rates. The dependent variables are dummy variables equal to one if the loan is collateralized by specific type of collateral, zero otherwise. “Asset Based” is a dummy variable equal to one if the collateral pledge is either Real Estate, Fixed Assets or Cash and marketable securities; “Earning and Operation Based” is equal to one if the collateral pledged is either blanket lien, account receivable and inventory or other; we drop the category “Unsecured”. The coefficients for the collateral types are calculated but not displayed. Double-clustered standard errors by firm and time are reported in parentheses.

To recap our results: First, monetary expansions relax constraints for high leverage SMEs. Second, collateral constraints relax the most for ‘Earnings and Operations Based Collateral’ despite higher default risk. Our final result shows the strong connection between these two sets of results. In particular, we run a regression among private firms using a dummy variable, ‘High Earnings and Operations Collateral’ equal to one for firms above the median in the distribution of the share of loans collateralized with earnings and operations based collateral. The results in Table 14 column (1) clearly show that higher earnings and operations collateral firms borrow more relative to other firms during expansionary monetary policy. Column (2) shows the baseline result that high leverage firms borrow more during expansions. Finally, the horse race in column (3) shows that high leverage captures most of the earnings and operations collateral effect because leverage among these firms is tied to earnings and operations based collateral.

Table 13: The Role of Collateral: Public Firms

	<i>Quantity</i>			<i>Prices</i>		
	(1) Log(Loan)	(2) Log(Loan)	(3) Log(Loan)	(4) Log(1+i)	(5) Log(1+i)	(6) Log(1+i)
Asset-based	-1.2454*** (0.0543)	-1.2489*** (0.0607)	-1.6386*** (0.0719)	0.0146*** (0.0008)	0.0148*** (0.0008)	0.0195*** (0.0010)
Earnings & Operations-based	-0.3105*** (0.0516)	-0.3421*** (0.0538)	-0.4388*** (0.0949)	0.0041*** (0.0005)	0.0048*** (0.0006)	0.0054*** (0.0009)
Asset-based \times MP _q	0.5611 (0.3421)	0.5472 (0.4600)	-0.3345 (0.7612)	0.0116 (0.0086)	0.0088 (0.0094)	0.0305* (0.0120)
Earnings & Operations-based \times MP _q	-1.3400*** (0.2895)	-1.7572*** (0.4475)	-4.0888*** (0.9127)	-0.0364*** (0.0046)	-0.0260*** (0.0064)	-0.0300** (0.0106)
Observations	644446	634710	485440	639445	629677	481327
Adjusted R^2	0.530	0.516	0.330	0.486	0.521	0.390
Bank \times Firm F.E.	Yes	Yes	No	Yes	Yes	No
Bank \times Time F.E.	Yes	No	No	Yes	No	No
Firm \times Time F.E.	No	Yes	No	No	Yes	No
Bank \times Firm \times Time F.E.	No	No	Yes	No	No	Yes

Note: ⁺ $p < 0.1$, * $p < 0.05$, ** $p < 0.01$, *** $p < 0.001$. This table presents the results of OLS regressions of the effect of collateral type using loan level data at a quarterly frequency, for the public firm sample. The dependent variable in columns (1) through (3) is the natural logarithm of the total committed loan amount ; the dependent variable in columns (4) through (6) is the natural logarithm of the nominal real interest rates. The dependent variables are dummy variables equal to one if the loan is collateralized by specific type of collateral, zero otherwise. “Asset Based” is a dummy variable equal to one if the collateral pledge is either Real Estate, Fixed Assets or Cash and marketable securities; “Earning and Operation Based” is equal to one if the collateral pledged is either blanket lien, account receivable and inventory or other; we drop the category “Unsecured”. The coefficients for the collateral types are calculated but not displayed. Double-clustered standard errors by firm and time are reported in parentheses.

Table 14: The Role of Collateral and Leverage

Dep. Var: Log(Loan)	(1)	(2)	(3)
High Earnings and Operations Collateral \times MP _q	-0.2363** (0.0843)		-0.1758* (0.0788)
High Leverage Firm \times MP _q		-1.1746*** (0.1400)	-1.1657*** (0.1376)
Observations	2140485	2140485	2140485
Adjusted R^2	0.937	0.937	0.937
Bank \times Firm FE	Yes	Yes	Yes
Direct Effect of MP _q	Yes	Yes	Yes

Note: ⁺ $p < 0.1$, * $p < 0.05$, ** $p < 0.01$, *** $p < 0.001$. This table presents the results of OLS regressions for bank-firm level at a quarterly frequency. High Leverage Firm is a dummy equal to one if the firm leverage is above the sample median and is based on short-term debt. Double-clustered standard errors by firm and time are reported in parentheses.

4.6 Risk-Taking by Banks

So far we have focused mostly on the impact of monetary policy on credit demand. Next we investigate the role of banks’ risk taking by running the standard regression in the literature shown in equation (3). Identification comes from credit supply using firms that borrow from

multiple banks.

4.6.1 The Role of Bank Leverage in Credit Outcomes

Table 15 shows that during monetary policy expansions highly levered banks supply fewer loans at lower prices, though the price effects are weak. The results are mainly driven by private firms in columns (2) and (5). Hence, the supply results for private firms are the exact opposite of the firm credit-demand regressions. Moreover, the results are also inconsistent with the supply-side risk taking channel. Risk taking by banks should manifest as more lending to smaller and less transparent private borrowers, not less. This means that low leverage banks lend more to private borrowers, consistent with other papers using U.S. data.

Table 15: Monetary Policy and Credit Outcomes: Firm-Bank Level — Bank Leverage

	Quantity: Log(Loan)			Price: Log(1+i)		
	(1) All	(2) Private	(3) Public	(4) All	(5) Private	(6) Public
High Leverage Bank \times MP Surprise _q	0.4026*** (0.1130)	0.5429*** (0.1319)	0.1605 (0.1559)	0.0069** (0.0021)	0.0066* (0.0027)	0.0059* (0.0022)
Observations	656882	349527	307355	662254	352806	309448
Adjusted R^2	0.910	0.929	0.862	0.853	0.858	0.818
Bank \times Firm F.E.	Yes	Yes	Yes	Yes	Yes	Yes
Bank \times Time F.E.	No	No	No	No	No	No
Firm \times Time F.E.	Yes	Yes	Yes	Yes	Yes	Yes

Note: + $p < 0.1$, * $p < 0.05$, ** $p < 0.01$, *** $p < 0.001$. This table presents the results of OLS regressions for bank-firm level at a quarterly frequency. Interest rates are weighted by the loan shares for a given firm-bank. Bank Leverage is based on short-term debt and it is lagged and demeaned. Double-clustered standard errors by firm and time are reported in parentheses.

The lack of risk-taking could reflect the time period of our data during which banks have been highly regulated and well capitalized. Therefore, the impact of leverage differences may be minimal. Fortunately, the Y-14 data have other dimension to identify bank risk-taking.

4.6.2 The Role of NPLs in Credit Outcomes

Each bank reports the cumulative net charge-off (or loan loss) amount for each loan that it makes. Net charge-offs represent the dollar value of non-performing loans that banks determine they will not recover in default and will have to write-down. Net charge-offs have a distinct advantage over other common measures in the literature such as default probabilities or simple delinquency dummies. Charge-offs are net of collateral confiscation, meaning they take into account the fact that loan recovery rates are, on average, 80 percent of

face value. Moreover, the losses associated with defaulted loans that are highly collateralized are generally much smaller than uncollateralized loans. Hence, net charge-offs capture this difference.

The cumulative net charge-offs are aggregated to bank-firm level and normalize by the total committed loan amount for each borrower. The charge-off ratio varies by bank-firm-quarter.

The charge-off results reported in Table 16 show a clear difference in the way that monetary policy easing impacts lending to private SMEs versus large public firms. The first column shows that private borrowers with higher charge-off rates on outstanding loans receive less credit when policy rates fall. Banks cut lending to risky private borrowers for whom they book past losses. By contrast, column (3) shows that there is no impact on credit among public firms.

Finally, note that the charge-off results identify risk-taking from the same set of bank-firm pairs as the bank leverage results above. Taken together, the results show that high-risk banks (high leverage) cut lending more in the future to risky private borrowers based on past losses (charge-offs).

Table 16: Monetary Policy and Bank Risk-Taking via Loan Losses: Firm-Bank Level

	<i>Private Firms</i>		<i>Public Firms</i>	
	(1) Log (Loan)	(2) Log (1 + i)	(3) Log (Loan)	(4) Log (1 + i)
$(\text{CCO}/\text{Loan})_{q-1}$	-0.0612 (0.0553)	-0.0001 (0.0022)	-0.2491 (0.2025)	-0.0058 (0.0052)
$(\text{CCO}/\text{Loan})_{q-1} \times \text{MP Surprise}_q$	2.8959** (0.8349)	0.0327 (0.0268)	-1.4709 (1.6931)	-0.0450 (0.0446)
Observations	310023	297044	285175	277986
Adjusted R^2	0.933	0.874	0.868	0.835
Bank \times Firm F.E	Yes	Yes	Yes	Yes
Firm \times Time F.E	Yes	Yes	Yes	Yes

Note: + $p < 0.1$, * $p < 0.05$, ** $p < 0.01$, *** $p < 0.001$. This table reports OLS estimates of alternative risk measures for banks at the bank-firm level for the private firm sample (Panel A) and the public firm sample (Panel B) using quarterly data. The dependent variable in columns (1)-(4) is the natural logarithm of the total committed loan amount for a bank-firm pair; the dependent variable in columns (5)-(8) is the natural logarithm of one plus the nominal interest rate weighted for loan shares for a given bank-firm pair. The measure of bank risk is the ratio of a bank-firm's total net charge off amount divided its committed loan amount for each firm, lagged one quarter. Each column sequentially adds different fixed effects. Standard errors are double clustered at the firm and quarter levels.

4.7 Financial Stability Risks

Overall, our results suggest that monetary policy transmission during a period of low interest rates mostly stimulates firm credit demand rather than bank credit supply. In particular, lower policy rates raise credit demand among smaller and more leveraged private companies, do not change bank credit supply, conditional on leverage, and do not increase lending to firms with prior defaults. Thus, we do not find any evidence of risk-taking behavior by banks. However, our findings do not imply there are no financial stability risks.

In this section we assess if highly levered firms that borrow more today are more likely to default in the future.

To address the question we use the same specification in [Jiménez, Ongena, Peydró, and Saurina \(2014\)](#). Specifically, we define a dummy variable equal to one if a firm has a non-performing loan with a given bank at any point in the future. A non-performing loan is one for which no payment has been made for at least 30 days and is delinquent. Thus, the variable indicates if loans to risky firms or loans by risky banks (risk captured by ex-ante time invariant leverage) are more likely to become non-performing at any point in the future. We run separate regressions for firm and bank leverage and interact leverage with the monetary policy surprise variable.

Table [17](#) contains the results for the different firm samples. Panel A is the full sample, panel B are only privately-owned firms and panel C are only publicly-owned firms. Overall, we do not find evidence of risk-taking by U.S. banks, contrary to the findings of [Jiménez, Ongena, Peydró, and Saurina \(2014\)](#) for Spanish banks. In fact, our results suggest that banks with less capital make *more prudent* loan decisions in response to expansionary monetary policy surprises. The first row in all three panels shows that the coefficients on the bank leverage and monetary surprise interaction terms are positive and statistically significant at 1 percent. These regressions include firm-time fixed effects to control for credit demand. The interpretation is that risky banks make loans that are less likely to be delinquent in the future than less risky banks. The second row reports the credit demand regressions that include bank-time fixed effects to control for supply factors. The coefficient on the interaction term of firm leverage and the monetary policy surprise is negative and statistically significant at 1 percent for private firms and 10 percent for public firms. Hence, we find that highly leveraged firms are more likely to be delinquent in the future when monetary policy is expansionary. This result suggests that low rates pose a hidden financial stability risk.

Additionally, we plot leverage growth among firms as a function of credit rating. The increase in leverage for public and private firms documented in [Figure 17](#) suggests that future delinquencies are likely to rise not only for public firms, but also for the riskiest

private borrowers.²² Figure 17 breaks down public and private firm leverage ratios by credit rating bins to investigate evolution over time: investment grade firms (AAA-A and BBB) and high yield firms (BBB and below).²³ The ratios are normalized to 1 at the beginning of our sample period. The figure shows that after the Global Financial Crisis, most of the financial leverage increase among U.S. firms is due to rapid growth in investment grade public firms. On the contrary, for private firms, financial leverage has steadily increased only for the most risky segment—high-yield equivalent borrowers (BBB and below), raising potential financial stability concerns. These results are consistent with Coimbra and Rey (2017), suggesting a trade-off between stimulating the economy and increasing the financial stability risks.

Table 17: Monetary Policy and Future Delinquency, Bank-Firm Level

	Panel A: All Firms		Panel B: Private Firms		Panel C: Public Firms	
	(1)	(2)	(3)	(4)	(5)	(6)
	Non-performing	Non-performing	Non-performing	Non-performing	Non-performing	Non-performing
High Leverage Bank \times MP Surprise _q	0.1302*** (0.0275)		0.1218** (0.0366)		0.2420*** (0.0417)	
High Leverage Firm \times MP Surprise _q		-0.0498** (0.0153)		-0.0594** (0.0164)		-0.0705+ (0.0377)
Observations	647889	2469016	342990	2150032	304899	318976
Adjusted R ²	0.699	0.647	0.710	0.636	0.699	0.700
Bank \times Firm f.e	Yes	Yes	Yes	Yes	Yes	Yes
Bank \times Time f.e	No	Yes	No	Yes	No	Yes
Firm \times Time f.e	Yes	No	Yes	No	Yes	No

Note: + $p < 0.1$, * $p < 0.05$, ** $p < 0.01$, *** $p < 0.001$. This table reports OLS estimates of the effect of MP shocks on the probability that loans become delinquent at any point in the future at the bank-firm level using quarterly data. Panel A uses all firms, panel B uses the private firm sample, and panel C uses the public firm sample. The dependent variable is an indicator variable that equals 1 if a firm has any loan outstanding that becomes delinquent for more than 30 days at any point in the future. *High leverage firm_i* is a dummy variable equal to one if the first quarter leverage of firm i is higher than the median leverage of the firms in the sample, and zero otherwise. *High leverage bank_k* is a dummy variable equal to one if the first quarter leverage of bank k is higher than the median leverage of the banks in the sample, and zero otherwise. Each column sequentially adds different fixed effects. Standard errors are double clustered at the firm and quarter levels.

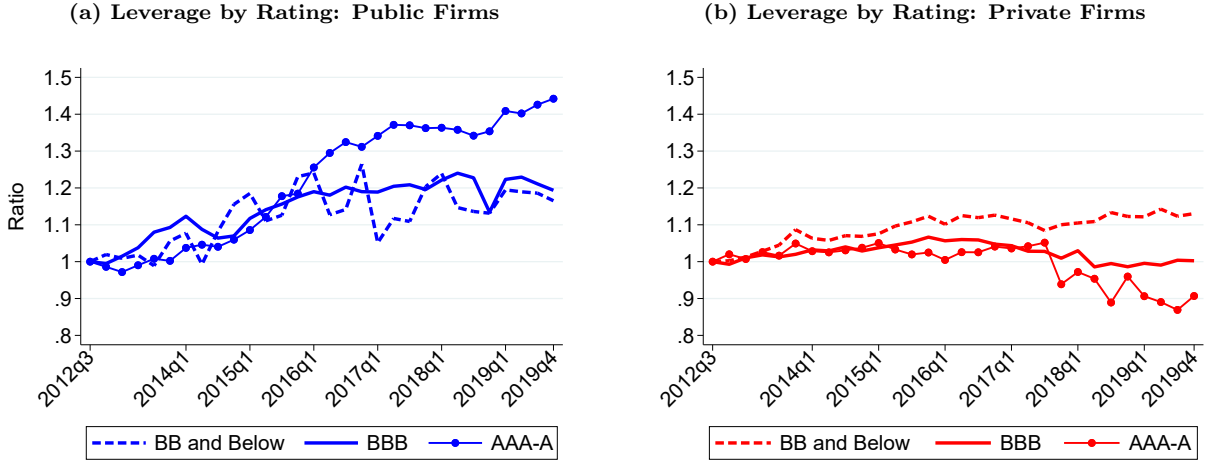
5 A Primer on the Mechanism

In this section we introduce a simple conceptual framework that can explain the new results presented in the paper. Recall that expansionary monetary policy works mostly via credit demand of private SMEs whose borrow against earnings and operations based collateral. We argue that expansionary policy increases the value of this type of collateral most among all

²²In separate analysis, we have also confirmed that leverage predicts default even conditional on non-performing loans for private firms. These results are available upon request.

²³We use the internal ratings that each BHC assigns to its borrowers in Schedule H1 of the FR Y-14 report. To compare ratings across reporting institutions, the internal rating is converted to a standardized rating scale going from AAA (very low risk of default) to D (in default).

Figure 17: Leverage Growth by Rating (Base 2012Q3)



Note: The figures plot leverage ratio—defined at the sum of short- and long-term debt over total assets—normalized to 1 the 2012Q3. The left (right) panel are the leverage ratios for public (private) borrowers. Each line is the median leverage ratio for borrowers with the specified bank provided risk-rating. Source: FR Y-14Q H.1

collateral types. We show below how this type of collateral expands the borrowing capacity of risky firms by increasing net worth and lowering default risk.

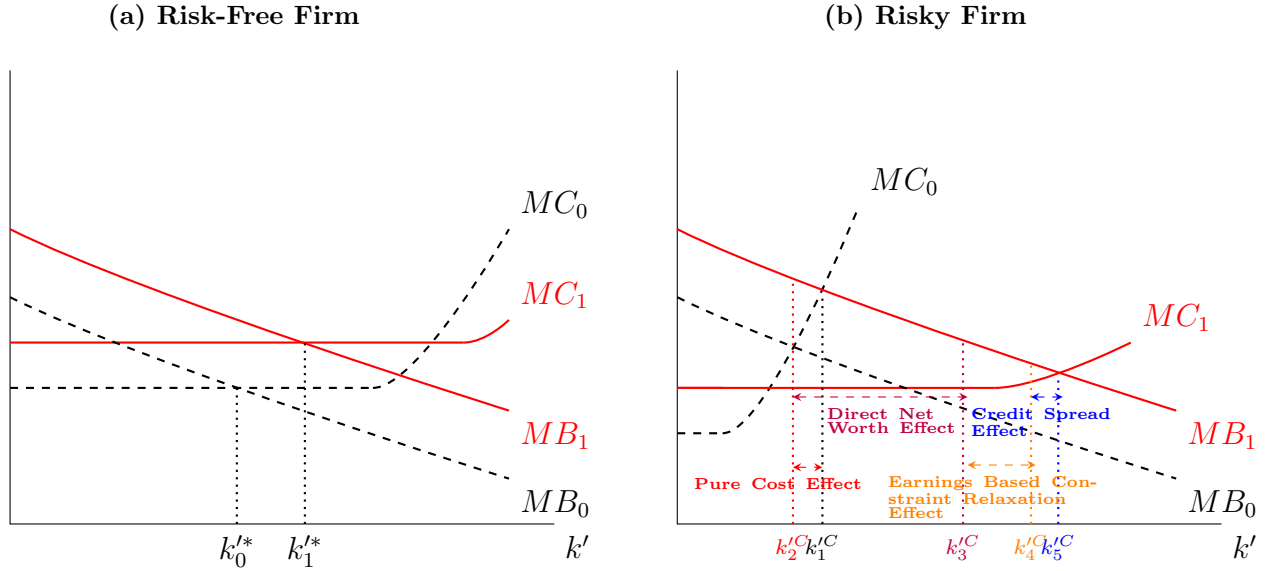
Standard macroeconomic theory conceptualizes firm financial frictions in one of two ways. The first follows [Bernanke and Gertler \(1989\)](#) and [Bernanke, Gertler, and Gilchrist \(1996\)](#). These costly-state verification models do not feature collateral constraints but feature default. Monetary policy relaxes an agency friction by increasing net worth and lowering default risk. The second framework pioneered by [Kiyotaki and Moore \(1997\)](#) introduces a collateral constraint that specifies firms may borrow up to a fraction of their capital. However, all debt in this class of models is risk-free because collateral constraints bind and firms cannot borrow more than the value of what they can repay in the future. In the micro contracting literature, there is a clear relation between pledging collateral and default risk, where high default risk firms have to pledge collateral and their debt is limited by the liquidation value of this collateral; in a default event, the re-sale value of the collateral provides insurance to the lender. [Darst and Refayet \(2018\)](#) offer a simplified 2-period model that features both endogenous default and a restriction on the value of promises firms make today based on the value of what they can produce tomorrow. However, we are not aware of any full-fledged macro model that incorporates both collateral constraints with risky debt.

Our results embed both effects. A monetary expansion relaxes SMEs collateral constraint because the constraint is based on earnings, which also improves their ability to repay, leading to lower default risk. The recent heterogeneous firm new Keynesian framework of [Ottonello and Winberry \(2020\)](#) features default, but does not have a collateral constraint. Nevertheless, a simple modification of their framework is suitable to interpret our empirical results.

Panel (a) in Figure 18 is the same as [Ottonello and Winberry \(2020\)](#), which shows that a low leverage/default risk firm operates on the flat portion of the marginal cost for investment curve. Equilibrium investment is determined by the intersection of the marginal cost and benefit curves, k_0^* . A monetary expansion, shown by the shifts to the red lines, raises both marginal cost and benefit curves. The new investment level is given by k_1^* .

Risky/high leverage firms operate on the upward sloping part of the marginal cost curve shown in panel (b). Expansionary monetary policy increases the price of capital shifting the marginal cost curve up. The movement from k_1^{C} to k_2^{C} captures this pure cost increase. Additionally, expansionary policy extends the flat portion of marginal cost curve due to a higher net worth. Higher net worth implies that firms can repay debt over a larger state-space. Moreover, expansionary policy also flattens the marginal cost curve because it increases the value of the earnings-based collateral used to secure the loan. As shown in the figure, the use of earnings and operations based collateral can amplify this effect by significantly flattening the cost curve, leading larger relative changes in risky firm investment shown by k_5^{C} . This simple modification captures the essence of our results.

Figure 18: Speculative Intuition



6 Conclusion

We use confidential supervisory data to explore how monetary policy transmits in an economy with heterogeneous firms and banks. We show that, compared to large public firms, SMEs are financially constrained, bank dependent, and post different forms of collateral to borrow.

Guided by differences in financial constraints and collateral, we then show that monetary policy transmission during normal times operates by stimulating highly leveraged SMEs credit demand rather than credit supply among risky banks. We then use granular collateral data to document the importance of earnings and operations-based collateral for monetary policy transmission. Lower policy rates relax SME collateral constraints by increasing net worth, which is tied to their borrowing, and raising their ability to repay, lowering default risk. We find no similar effects for large publicly listed firms and show that leveraged private firms/SMEs drive the results for the full sample of U.S. firms. Furthermore, we do not find evidence that low interest rates lead to risk-taking among U.S. banks. In fact, we find that more risky banks extend less credit than safe banks and cut credit to risky private firms from whom banks recognize prior loan losses. Finally, we show that there is a trade-off between stimulating the economy in the short-run and future financial stability because lower policy rate increase firm leverage at the expense of higher future default risk.

Our results stress the importance of collateral to capture risk versus access to finance as function of firm size. The relation between collateral and risk is positive for large, listed firms but negative for private firms and SMEs. Hence, posting collateral for large firms, who typically borrow unsecured, is a sign of distress. By contrast, posting collateral for SMEs is associated with higher loan quantities and lower credit spreads. In addition, SMEs mostly rely on earnings based collateral rather than fixed assets and real estate. Expansionary monetary policy makes this collateral more valuable because it stimulates aggregate demand, which raises the value of SME operations and earnings enabling additional credit growth and borrowing. This mechanism shows that the effectiveness and power of monetary policy depend on the joint distribution of firm size and the type of collateral used to obtain credit.

A recent literature argues that general equilibrium effects of firm investment are critical to understanding monetary policy transmission ([Auclert, Rognlie, and Straub, 2020](#)). Our results suggests that the effectiveness of the firm general equilibrium channel may also depend on the firm size distribution and the different types of collateral used to obtain financing to maintain and expand operations.

References

- Acharya, Viral, and Hassan Naqvi. 2012. “The Seeds of a Crisis: A Theory of Bank Liquidity and Risk Taking over the Business Cycle.” *Journal of Financial Economics* 106 (2): 349 – 366. <https://doi.org/10.1016/j.jfineco.2012.05.014>.
- Adrian, Tobias, and Hyun Song Shin. 2009. “Money, Liquidity, and Monetary Policy.” *American Economic Review* 99 (2): 600–605. [10.1257/aer.99.2.600](https://doi.org/10.1257/aer.99.2.600).
- Asriyan, Vladimir, Luc Laeven, Alberto Martin, Alejandro Van der Gote, and Victoria Vanasco. 2021. “Falling Interest Rates and Credit Misallocation: Lessons from General Equilibrium.” Working Papers 1268, Barcelona Graduate School of Economics, <https://ideas.repec.org/p/bge/wpaper/1268.html>.
- Auclert, Adrien. 2019. “Monetary Policy and the Redistribution Channel.” *American Economic Review* 109 (6): 2333–67.
- Auclert, Adrien, Matthew Rognlie, and Ludwig Straub. 2020. “Micro Jumps, Macro Humps: Monetary Policy and Business Cycles in an Estimated HANK Model ”Secured Credit Spreads and the Issuance of Secured Debt.” working paper, <http://web.stanford.edu/~aaucclert/mjmh.pdf>.
- Benmelech, Efraim, and Nittai K. Bergman. 2012. “Credit Traps.” *American Economic Review* 102 (6): 3004–32. [10.1257/aer.102.6.3004](https://doi.org/10.1257/aer.102.6.3004).
- Berger, Allen N., W. Scott Frame, and Vasso Ioannidou. 2016. “Reexamining the empirical relation between loan risk and collateral: The roles of collateral liquidity and types.” *Journal of Financial Intermediation* 26 28 – 46. <https://doi.org/10.1016/j.jfi.2015.11.002>.
- Berger, Allen N., and Gregory F. Udell. 1990. “Collateral, loan quality and bank risk.” *Journal of Monetary Economics* 25 (1): 21–42. [https://doi.org/10.1016/0304-3932\(90\)90042-3](https://doi.org/10.1016/0304-3932(90)90042-3).
- Bernanke, Ben, and Mark Gertler. 1989. “Agency Costs, Net Worth, and Business Fluctuations.” *The American Economic Review* 79 (1): 14–31, <http://www.jstor.org/stable/1804770>.
- Bernanke, Ben, Mark Gertler, and Simon Gilchrist. 1996. “The Financial Accelerator and the Flight to Quality.” *The Review of Economics and Statistics* 78 (1): 1–15, <http://www.jstor.org/stable/2109844>.
- Bidder, Rhys, John Krainer, and Adam Shapiro. 2018. “How Do Banks Cope with Loss?” frbsf economic letter, Federal Reserve Bank of San Francisco.
- Borio, Claudio, and Haibin Zhu. 2012. “Capital Regulation, Risk-taking and Monetary Policy: A Missing Link in the Transmission Mechanism?” *Journal of Financial Stability* 8 (4): 236 – 251. <https://doi.org/10.1016/j.jfs.2011.12.003>.
- Caglio, Cecilia, R. Matthew Darst, and Eric Parolin. 2019. “Half-full or Half-empty? Financial Institutions, CDS Use, and Corporate Credit Risk.” *Journal of Financial Intermediation* 40 100812. <https://doi.org/10.1016/j.jfi.2019.03.001>.
- Chodorow-Reich, Gabriel, Olivier Darmouni, Stephan Luck, and Matthew Plosser. 2020. “Bank Liquidity Provision Across the Firm Size Distribution.” Technical report.
- Cloyne, James, Clodomiro Ferreira, Maren Froemel, and Paolo Surico. 2018. “Monetary Policy, Corporate Finance and Investment.” Technical report, National Bureau of Economic Research.
- Coimbra, Nuno, and Hélène Rey. 2017. “Financial Cycles with Heterogeneous Intermediaries.” Working Paper 23245, National Bureau of Economic Research. [10.3386/w23245](https://doi.org/10.3386/w23245).
- Darst, Matthew, Ehraz Refayet, and Alexandros Vardoulakis. 2020. “Banks, Non-Banks, and Lending Standards.” *Finance and Economics Discussion Series 2020-086: Washington: Board of Governors of the Federal Reserve System*. <https://doi.org/10.17016/FEDS.2020.086>.
- Darst, R. Matthew, and Ehraz Refayet. 2018. “Credit Default Swaps in General Equilibrium: Endogenous Default and Credit-Spread Spillovers.” *Journal of Money, Credit and Banking* 50 (8): 1901–1933. <https://doi.org/10.1111/jmcb.12507>.

- Dell’Ariccia, Giovanni, Luc Laeven, and Gustavo A. Suarez. 2017. “Bank Leverage and Monetary Policy’s Risk-Taking Channel: Evidence from the United States.” *The Journal of Finance* 72 (2): 613–654. [10.1111/jofi.12467](https://doi.org/10.1111/jofi.12467).
- di Giovanni, Julian, Sebnem Kalemli-Ozcan, Mehmet Fatih Ulu, and Yusuf Soner Baskaya. 2019. “International Spillovers and Local Credit Cycles.” forthcoming *Review of Economic Studies*.
- Dinlersoz, Emin, Sebnem Kalemli-Ozcan, Henry Hyatt, and Veronika Penciakova. 2018. “Leverage over the Life Cycle and Implications for Firm Growth and Shock Responsiveness.” nber working paper no. 25226.
- Drechsel, Thomas. 2019. “Earnings-Based Borrowing Constraints and Macroeconomic Fluctuations.” Technical report.
- Eisfeldt, Andrea L., and Adriano A. Rampini. 2008. “Leasing, Ability to Repossess, and Debt Capacity.” *The Review of Financial Studies* 22 (4): 1621–1657. [10.1093/rfs/hhn026](https://doi.org/10.1093/rfs/hhn026).
- Gertler, Mark, and Simon Gilchrist. 1994. “Monetary Policy, Business Cycles, and the Behavior of Small Manufacturing Firms.” *The Quarterly Journal of Economics* 109 (2): 309–340.
- Gertler, Mark, and Peter Karadi. 2015. “Monetary Policy Surprises, Credit Costs, and Economic Activity.” *American Economic Journal: Macroeconomics* 7 (1): 44–76. [10.1257/mac.20130329](https://doi.org/10.1257/mac.20130329).
- Gopinath, Gita, Sebnem Kalemli-Ozcan, Loukas Karabarbounis, and Carolina Villegas-Sanchez. 2017. “Capital Allocation and Productivity in South Europe.” *The Quarterly Journal of Economics* 132 (4): 1915–1967. [10.1093/qje/qjx024](https://doi.org/10.1093/qje/qjx024).
- Greenwald, Daniel, John Krainer, and Pascal Paul. 2020. “The Credit Line Channel.” Technical report.
- Gürkaynak, Refet S, Brian Sack, and Eric Swanson. 2005. “Do Actions Speak Louder Than Words? The Response of Asset Prices to Monetary Policy Actions and Statements.” *International Journal of Central Banking* 1 (1): , <https://ideas.repec.org/a/ijc/ijcjou/y2005q2a2.html>.
- Ioannidou, Vasso, Steven Ongena, and José-Luis Peydró. 2014. “Monetary Policy, Risk-Taking, and Pricing: Evidence from a Quasi-Natural Experiment.” *Review of Finance* 19 (1): 95–144. [10.1093/rof/rfu035](https://doi.org/10.1093/rof/rfu035).
- Ivanov, Ivan, Luke Pettit, and Toni Whited. 2020. “Taxes Depress Corporate Borrowing: Evidence from Private Firms.” *SSRN*, <https://ideas.repec.org/a/ijc/ijcjou/y2005q2a2.html>.
- Ivashina, Victoria, Luc Laeven, and Enrique Moral-Benito. 2020. “Loan Types and the Bank Lending Channel.” NBER Working Papers 27056, National Bureau of Economic Research, Inc, <https://ideas.repec.org/p/nbr/nberwo/27056.html>.
- Jeenas, Priit. 2019. “Firm Balance Sheet Liquidity, Monetary Policy Shocks, and Investment Dynamics.” *Working Paper*.
- Jiménez, Gabriel, Steven Ongena, José-Luis Peydró, and Jesús Saurina. 2014. “Hazardous Times for Monetary Policy: What Do Twenty-Three Million Bank Loans Say about the Effects of Monetary Policy on Credit Risk-taking?” *Econometrica* 82 (2): 463–505, <http://www.jstor.org/stable/24029266>.
- Kaplan, Greg, Benjamin Moll, and Giovanni L. Violante. 2018. “Monetary Policy According to HANK.” *American Economic Review* 108 (3): 697–743. [10.1257/aer.20160042](https://doi.org/10.1257/aer.20160042).
- Kermani, Amir, and Yueran Ma. 2021. “Two Tales of Debt.” working paper, <https://cpb-us-w2.wpmucdn.com/voices.uchicago.edu/dist/7/1291/files/2017/01/TwoTalesOfDebt-v7.pdf>.
- Khwaja, Asim Ijaz, and Atif Mian. 2008. “Tracing the Impact of Bank Liquidity Shocks: Evidence from an Emerging Market.” *American Economic Review* 98 (4): 1413–42. [10.1257/aer.98.4.1413](https://doi.org/10.1257/aer.98.4.1413).
- Kiyotaki, Nobuhiro, and John Moore. 1997. “Credit Cycles.” *Journal of Political Economy* 105 (2): 211–248, <http://www.jstor.org/stable/10.1086/262072>.

- Kiyotaki, Nobuhiro, John Moore, and Shengxing Zhang. 2021. "Credit Horizons." Working Paper 28742, National Bureau of Economic Research. [10.3386/w28742](https://doi.org/10.3386/w28742).
- Lian, Chen, and Yueran Ma. 2020. "Anatomy of Corporate Borrowing Constraints*." *The Quarterly Journal of Economics* 136 (1): 229–291. [10.1093/qje/qjaa030](https://doi.org/10.1093/qje/qjaa030).
- Luck, Stephan, and Joao Santos. 2019. "The Value of Collateral in Loan Contracts." ssrn working paper, <http://dx.doi.org/10.2139/ssrn.3467316>.
- Luck, Stephan, and Tom Zimmermann. 2020. "Employment effects of unconventional monetary policy: Evidence from QE." *Journal of Financial Economics* 135 (3): 678–703. <https://doi.org/10.1016/j.jfineco.2019.07.004>.
- McKay, Alisdair, Emi Nakamura, and Jón Steinsson. 2016. "The Power of Forward Guidance Revisited." *American Economic Review* 106 (10): 3133–58.
- Niepmann, F., and T. Schmidt-Eisenlohr. 2018. "Global Investors, the Dollar, and U.S. Credit Conditions." cepr discussion paper no. 13237.
- Ottonello, Pablo, and Thomas Winberry. 2020. "Financial Heterogeneity and the Investment Channel of Monetary Policy." *Econometrica* 88 (6): 2473–2502. <https://doi.org/10.3982/ECTA15949>.
- Paligorova, Teodora, and Joao A.C. Santos. 2017. "Monetary Policy and Bank Risk-taking: Evidence from the Corporate Loan Market." *Journal of Financial Intermediation* 30 35 – 49. <https://doi.org/10.1016/j.jfi.2016.11.003>.
- Rajan, Raghuram G. 2005. "Has Financial Development Made the World Riskier?" Working Paper 11728, National Bureau of Economic Research. [10.3386/w11728](https://doi.org/10.3386/w11728).
- Rauh, Joshua D., and Amir Sufi. 2010. "Capital Structure and Debt Structure." *The Review of Financial Studies* 23 (12): 4242–4280. [10.1093/rfs/hhq095](https://doi.org/10.1093/rfs/hhq095).
- Romer, Christina D., and David H. Romer. 2004. "A New Measure of Monetary Shocks: Derivation and Implications." *American Economic Review* 94 (4): 1055–1084. [10.1257/0002828042002651](https://doi.org/10.1257/0002828042002651).
- Stiglitz, Joseph E., and Andrew Weiss. 1981. "Credit Rationing in Markets with Imperfect Information." *The American Economic Review* 71 (3): 393–410, <http://www.jstor.org/stable/1802787>.
- Tenreiro, Silvana, and Gregory Thwaites. 2016. "Pushing on a String: US Monetary Policy is Less Powerful in Recessions." *American Economic Journal: Macroeconomics* 8 (4): 43–74.
- Wong, Arnele. 2019. "Refinancing and The Transmission of Monetary Policy to Consumption." *Working Paper*. https://static1.squarespace.com/static/576576adbe659449f97e0d35/t/5ce1f9f23fdc1e00014f3d22/1558313459256/Paper_AERrevision_0519.pdf.

Appendices

A Variable Definitions

Variable	Definition
Bank leverage	It is calculated both as short-term debt as a fraction of total assets and as total liabilities as a fraction of total assets.
Firm leverage	It is calculated both as short-term debt as a fraction of total assets and as total liabilities as a fraction of total assets.
Collateral type	Real estate Fixed assets Cash and marketable securities Accounts receivable and inventory Blanket lien and others Unsecured
Probability of future default	It is dummy equal to one if the firm defaults at any point in time in the future.
Charge-offs _b	It is calculated as the maximum cumulative net charge-offs by bank weighted by the bank's commitments.
Charge-offs _f	It is calculated as the total cumulative net charge-offs by firm.
Charge-offs _l	It is calculated as the average cumulative net charge-offs by loan.

B Data Details

B.1 FR Y-14Q Schedule H.1

The FR Y-14Q report collects detailed information on bank holding companies' (BHCs), savings and loan holding companies' (SLHCs), and U.S. intermediate holding companies' (IHCs) of foreign bank organizations (FBOs) on a quarterly basis. The data are collected as part of the Federal Reserve's Comprehensive Capital Analysis and Review (CCAR) for BHCs, SLHCs and IHCs with at least \$50 billion (\$100 billion starting from 2019) in total assets.²⁴ The banks that submit FR Y-14Q data since 2012 comprise over 85 percent of the total assets in the U.S. banking sector.

For our study, we use the Wholesale Risk Schedule, or H.1. Schedule, which collects loan level data on corporate loans and leases together with corporates' balance sheets. The H.1 Schedule has two sections: (1) Loan and Obligor Description section, which collects information related to the firm and the loan itself; and (2) Obligor Financial Data section, which collects data related to the financial health (balance sheet and income statement) of the firm. Hence we also have time varying information on bank and firm balance sheets.

²⁴The assessment is conducted annually and consists of two related programs: Comprehensive Capital Analysis and Review and Dodd-Frank Act stress testing (DFAST).

Banks report details on corporate loans and leases that are either held-for-investment (HFI) or held-for-sale (HFS) in the loan book at each quarter end. Loans and leases with HFI designation are those that the bank has the “intent and ability to hold until the foreseeable future or until maturity or payoff.” Loans and leases that are HFS are those that the bank intends or expects to sell at some indefinite date in the future. Both HFI and HFS loans and leases are categorically distinct from those that are reported as trading assets. Trading assets of banks are not reported on FR Y-14 Schedule H.1 and are instead reported on Schedule B (Securities Schedule). The vast majority of loans in the FR Y-14 data (on average 98 percent by dollar amount) are designated as HFI.

The population of loans is reported at the credit facility level (loan level) and is limited to commercial and industrial loans with a committed balance greater than or equal to \$1 million.²⁵ Each facility is reported separately when borrowers have multiple facilities from the same bank. The facility level information includes total committed and utilized amounts, pricing and spread information, origination and maturity dates, and information on the value and type of underlying collateral. We use facility and loan interchangeably throughout the paper.

The total committed value of the loans reported on the H.1 Schedule as of 2019Q4 is nearly \$3.3 trillion.²⁶ To get a sense for what fraction of total U.S. C&I lending our data comprise, we compare it to what is reported by the universe of BHCs, in the aggregate form, on the FR Y-9C (schedules HC-C and HC-L). BHCs commitments in the FR Y-9C total nearly \$4.6 trillion. Thus, our data from the FR Y-14Q accounts for nearly 70 percent of all C&I equivalent lending in the U.S.²⁷

The FR Y-14Q information on the financial health of the borrowers (firm balance sheet and income statement variables) is an invaluable source of information for private firms in the U.S. as this information does not exist anywhere else.²⁸ The data also contains borrower

²⁵A credit facility is defined as a credit extension to a legal entity under a specific credit agreement, basically a loan contract.

²⁶We keep loans identified on the FR Y-9C as C&I loans domiciled in the U.S. (item 4(a)), loans to finance agricultural production (item 3), loans secured by owner-occupied real estate domiciled in the U.S. (item 1(e)(1)), and other leases (item 10(b)).

²⁷The comparisons between FR Y-14Q and FR Y-9C are not one-to-one and are complicated by at least three factors: 1) HC-C only reports utilized exposures; 2) the committed exposures reported on HC-L are aggregated differently and include loans that are not necessarily U.S. C&I loans. For example, HC-L reports total committed exposure for all C&I loans (Y-9C item 4), which includes loans to foreign addresses (item 4(b) in addition to those those domiciled in the U.S (item 4(a)). In addition, the HC-L reports the total committed amount of loans secured by real-estate (item 1), which includes various types of loans secured by real estate in addition to loans secured by owner-occupied real estate domiciled in the U.S. (item 1(e)(1)). 3) FR Y-14Q data only includes loans over \$1mn. Therefore, FR Y-14Q comparisons of the total committed loans amounts to FR Y-9C represent lower bounds of the overall amount of C&I lending done in the U.S.

²⁸Few commercial data providers, such as, Moody’s ORBIS and D&B provide some of this data but for a select set of private firms that volunteer the information. Other sources such as FED’s small business finance

identifiers such as tax identification numbers, CUSIPS, and company names and addresses. These firm identifiers allow us to match the data with other data sources to cross-check information and determine the relative importance of different sets of borrowers *e.g.* public versus private companies, SMEs versus large firms, and syndicated versus non-syndicated loans.

Bank Holding Companies subject to CCAR. The bank holding companies included in the sample are: beginning in Q3:2011 Ally Financial, Bank of America Corporation, BB&T Corporation, Bank of New York Mellon Corporation, Citigroup Incorporated, Capital One Financial Corporation, Fifth Third Bancorp, Goldman Sachs Group Incorporated, JPMorgan Chase & Co., Keycorp, Morgan Stanley, PNC Financial Services Group Incorporated, Regions Financial Corporation, Suntrust Banks Incorporated, State Street Corporation, U.S. Bancorp, Wells Fargo & Company. Beginning in Q3:2012 Comerica Incorporated, Huntington Bancshares Incorporated, HSBC North America Holdings Incorporated, M&T Bank Corporation, Northern Trust Corporation, RBC USA Holdco Corporation, Santander Holdings USA Incorporated, UnionBanCal Corporation (renamed to MUFG Americas Holding Corporation in Q3:2014), Zions Bancorporation. Beginning in Q2:2014 Discover Financial Services. Beginning in Q4:2014 BNP Paribas.

HFI, HFS, and Trading Assets. HFS loans and leases are also distinct from loans held on the trading book for market making purposes and subject to different regulatory capital requirements. Specifically, loans and leases in the trading book are reported on a separate schedule (other than Schedule H1) and typically meet the following trading activities: a) regularly under-writing or dealing in securities; interest rate, foreign exchange rate, commodity, equity, and credit derivative contracts; other financial instruments; and other assets for resale, (b) acquiring or taking positions in such items principally for the purpose of selling in the near term or otherwise with the intent to resell in order to profit from short-term price movements, and (c) acquiring or taking positions in such items as an accommodation to customers or for other trading purposes.

Data Cleaning and Sample Construction. This section describes the intensive data cleaning process needed to use the FR Y14 data for our purposes.

survey and U.S. Census Bureau's QFR data sets are also for select set of firms and not representative of the U.S. economy. See [Dinlersoz, Kalemli-Ozcan, Hyatt, and Penciakova \(2018\)](#) that goes details of the selection problems in the financial data for private firms in the U.S. and how to use U.S. Census Bureau LBD data to correct for this selection.

1. Remove from the raw loan-level data loans issued to “Individuals” and loans to foreign addresses.
2. Remove any loans to financial firms (NAICS 52); real estate REITS (NAICS 513); educational services (NAICS 611); religious, grantmaking, and civil and professional organizations (NAICS 813); and private household (NAICS 814).
3. Drop all observations for which there is no financial data reported and when total firm assets are missing or equal to 0.
4. Drop all facilities where the total value of commitments is less than \$1 million (probable errors given reporting threshold).
5. To consistently identify firms across banks with missing or different tax ids, we first apply a name cleaning algorithm to make a consistent names for firms that are the same based on string matches, zipcode, and city. For example Firm A LLC, 20002 Washington D.C, Firm A Limited Liability Corporation 20002 Washington D.C., and Firm a LLC, 20002 Washington D.C. are all treated as the same firm, etc.
6. Once we have a clean and uniform set of firm names, we can fill in missing tax ids. For observations loans where firm tax id is missing, we fill in missing observations if the bank reports a consistent tax id through any portion of the loan; for multi-bank borrowers for which one bank does not report the tax id, we use a consistent tax id reported by other banks.
7. To ensure that firm income statement and balance sheet variables are reasonable and reported in consistent units, we apply a cleaning algorithm that searches for large reporting discrepancies within and across banks over time for the same firm. We set threshold for potential misreported to be a difference in a variable either by the same bank or across different banks of either 10^3 , 10^6 , 10^9 since these are most common unit differences reported in the data. We also note that when there is miss reporting, all variables appear to be consistently miss reported in the same way, so financial ratios are correct.

Internal Consistency of Balance Sheet Information. We follow [Gopinath, Kalemli-Ozcan, Karabarbounis, and Villegas-Sanchez \(2017\)](#) to check the sensibility of our cleaning procedure by comparing the sum of variables belonging to some aggregate of their respective category:

1. The sum of tangible fixed assets, intangible fixed assets, and other fixed assets as a ratio of total fixed assets.
2. The sum of fixed assets and current assets as a ratio of total assets
3. The sum of long-term debt and other non-current liabilities as a ratio of total non-current liabilities
4. The sum of cash and securities, inventory, and accounts receivable as a ratio of current assets
5. The sum of current assets and tangible assets as a ratio of total assets
6. The sum of accounts payable, short-term debt, and current maturity long-term debt as a ratio of current liabilities
7. The sum of current liabilities, long-term debt and minority interest as a ratio of total liabilities
8. The sum of total liabilities, retained earnings, and capital expenditure as a ratio of total assets.

Information on credit facilities and reporting thresholds in FR Y-14. A credit facility is defined as any legally binding credit extension to a legal entity under a specific credit agreement. A credit facility may be secured or unsecured, term or revolving, drawn or undrawn (excluding informal advised lines). There is no materiality threshold for securities reporting at the individual obligor level. BHCs must report their securities holdings if the entire portfolio is greater than either \$5 billion or five percent of Tier 1 capital on average for the four quarters preceding the reporting quarter.

Note on Total Liabilities: Flow of Funds. Total non financial corporate liabilities reported by the Flow of Funds in the National Accounts of the U.S. (Table B.3, Series i.d. FL104190005.Q) is computed as

$$Liabilities_{total} = taxes + debtsecurities + loans + miscellaneous + FDI.$$

The following source the total liability components:

- Tax data come from Internal Revenue Service, Statement Of Income – This item is smallest line item in the total;

- Debt securities are bond data is from Mergent Fixed Income Securities Database;
- Loan data are pulled from bank call reports – These data are all U.S. chartered bank depository institutions plus foreign bank offices in the U.S. These data also include credit unions;
- Miscellaneous is a catchall category and is the largest single component. This data is the sum of private pension fund contributions from the Department of Labor, and an unidentified category, which is the largest component of miscellaneous. The unidentified category is computed as a residual category from the IRS SOI and flow of funds:

$$unidentified = total_{assets} - equity - liabilities,$$

where *liabilities* are the individual liability sub-components in the Flow of Funds;

- FDI comes from BEA

C Robustness Appendix

C.1 Tables

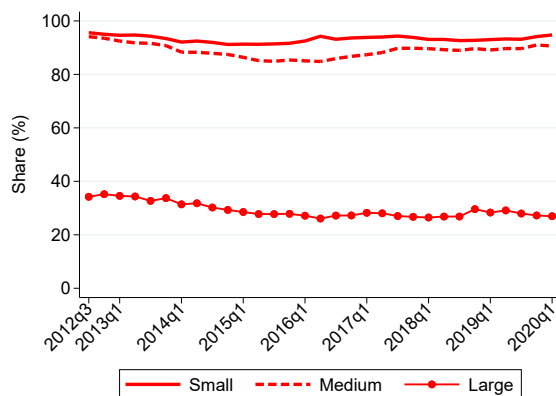
Table 18: Total Leverage: Public Firms

	Quantity: $\text{Log}(\text{Loan})$	Price: $\text{Log}(1+i)$
	(1)	(2)
High Total Leverage Firm \times MP Surprise _q	0.6014** (0.2078)	-0.0006 (0.0042)
Observations	322055	213531
Adjusted R^2	0.837	0.747
Bank \times Firm F.E.	Yes	Yes
Bank \times Time F.E.	Yes	Yes
Firm \times Time F.E.	No	No

Note: + $p < 0.1$, * $p < 0.05$, ** $p < 0.01$, *** $p < 0.001$. This table presents the results of OLS regressions for bank-firm pairs at a quarterly frequency for the public firms sample. The dependent variable in column (1) is the natural logarithm of the total committed loan amount for a bank-firm pair; the dependent variable in columns (2) is the natural logarithm of one plus the nominal interest rate weighted for loan shares for a given bank-firm pair. Total Firm Leverage is based on short-term and long-term debt and it is 1 when the firm is above the median total leverage of the sample and it is zero otherwise. Double-clustered standard errors by firm and time are reported in parentheses.

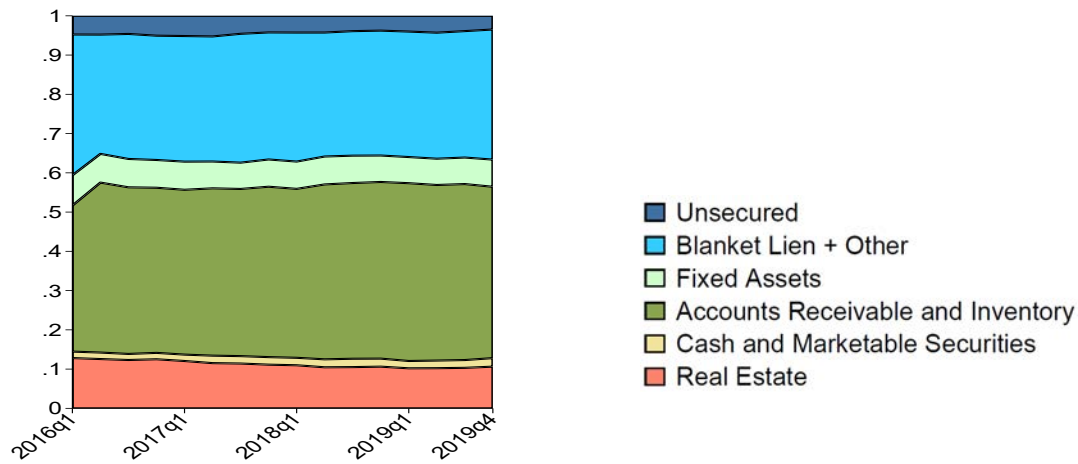
C.2 Figures

Figure 19: Share of Bank Debt in Non-Financial Private Firms' Financing in FR Y-14



Note: The figures plots the median loan commitment as share of total balance sheet debt for various points in the asset-size distribution among private borrowers. Source: FR-Y14Q H.1

Figure 20: Collateral Types among SMEs



Note: The figure plots loan values secured by different collateral types over time for SME borrowers. SMEs are defined as firms with annual sales less than \$50mn. The different types of collateral are real estate collateral (salmon); cash and marketable securities (yellow); accounts receivable, inventory (green); fixed assets (mint); blanket liens and other (light blue); and unsecured (dark blue). Source: FR Y14-Q H.1.

Figure 21: Collateral Type: Public vs. Private (Based on Number of Loans)

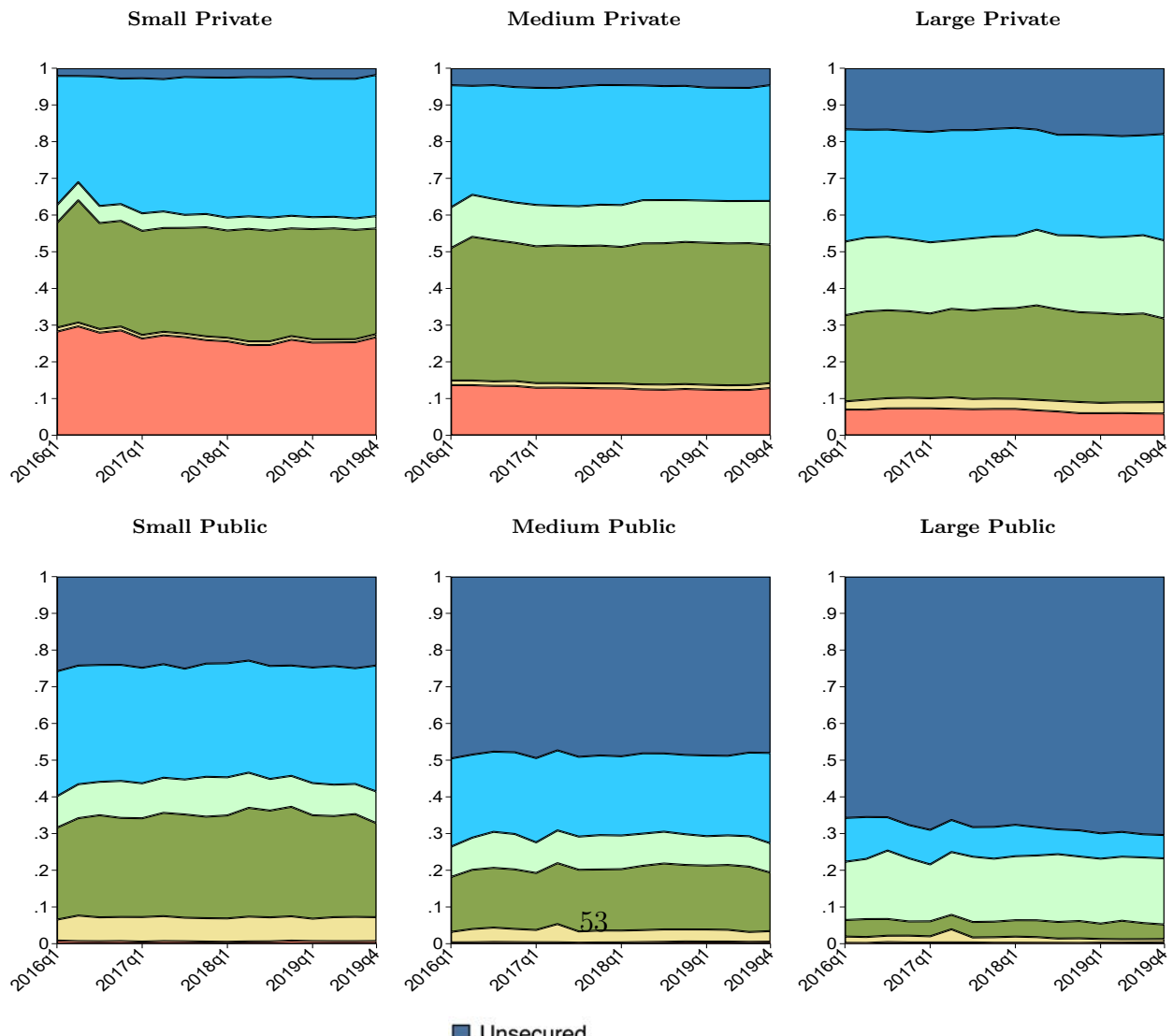
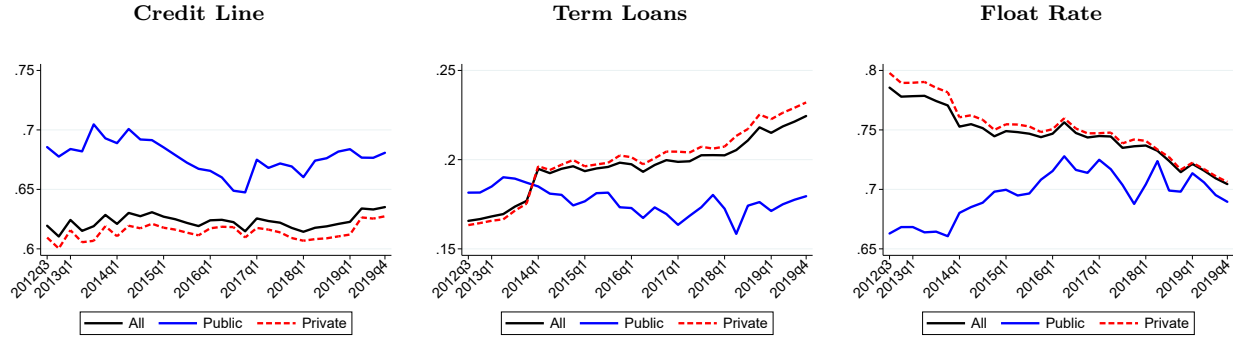


Figure 22: Loan shares: Credit Lines/Term loans and Floating/Fixed Rates



Note: The share of credit lines among all loan types in the left panel. The middle panel plots the term loans shares. The right panel plots the share of loans with floating interest rates. Source: FR Y-14Q H.1. Source: FR Y-14Q H.1.