

NBER WORKING PAPER SERIES

ELUSIVE SAFETY: THE NEW GEOGRAPHY OF CAPITAL FLOWS AND RISK

Laura Alfaro  
Ester Faia  
Ruth A. Judson  
Tim Schmidt-Eisenlohr

Working Paper 27048  
<http://www.nber.org/papers/w27048>

NATIONAL BUREAU OF ECONOMIC RESEARCH  
1050 Massachusetts Avenue  
Cambridge, MA 02138  
April 2020

The opinions expressed are those of the authors and do not necessarily reflect the view of the Board of Governors, the staff of the Federal Reserve System, or the National Bureau of Economic Research.

NBER working papers are circulated for discussion and comment purposes. They have not been peer-reviewed or been subject to the review by the NBER Board of Directors that accompanies official NBER publications.

© 2020 by Laura Alfaro, Ester Faia, Ruth A. Judson, and Tim Schmidt-Eisenlohr. All rights reserved. Short sections of text, not to exceed two paragraphs, may be quoted without explicit permission provided that full credit, including © notice, is given to the source.

Elusive Safety: The New Geography of Capital Flows and Risk  
Laura Alfaro, Ester Faia, Ruth A. Judson, and Tim Schmidt-Eisenlohr  
NBER Working Paper No. 27048  
April 2020  
JEL No. F2,F3,F4,G15

### **ABSTRACT**

Using a unique confidential data set with industry disaggregation of official U.S. claims and liabilities, we find that dollar-denominated securities are increasingly intermediated by tax havens financial centers (THFC) and by less regulated funds. These securities are risky and respond to tax rates and prudential regulations, suggesting tax avoidance and regulatory arbitrage. Issuers are mostly intangible-intensive multinationals, that can more easily move across borders. Investors require a high Sharpe ratio, suggesting search for yield. In contrast, safe treasuries are mainly held by the foreign official sector and increased with quantitative easing policies. Facts on the privately held securities are rationalized through a model where multinationals with heterogeneous default probabilities endogenously choose to shift profits to a THFC against a cost and are funded by global intermediaries with endogenous monitoring intensity. A fall in debt costs, due to an increase in global savings channeled by low regulated intermediaries, raises firms' profits. More firms can afford to enter the THFC and, as they appear elusively safer, intermediaries reduce monitoring intensity, increasing ex post risk.

Laura Alfaro  
Harvard Business School  
Morgan Hall 263  
Soldiers Field  
Boston, MA 02163  
and NBER  
lalfaro@hbs.edu

Ruth A. Judson  
Global Financial Flows Section,  
International Finance  
Federal Reserve System  
20th Street and Constitution Avenue, NW  
Washington, DC 20551  
ruth.a.judson@frb.gov

Ester Faia  
House of Finance  
Theodor Adorno Platz 3,  
Frankfurt a M 60323, Germany  
faia@wiwi.uni-frankfurt.de

Tim Schmidt-Eisenlohr  
Federal Reserve System  
20th St NW & Constitution Ave NW  
Washington, D.C. 20551  
and University of Illinois at Urbana-Champaign  
t.schmidteisenlohr@gmail.com

# 1 Introduction

The large and growing international flows of US-denominated securities have long been an important part of theoretical research. Recently some papers (reviewed in the next section) have confirmed and documented the dominance of the dollar in international flows. Yet, no paper has studied the micro origins, especially the motives and incentives, behind these flows due to a lack of reliable data with an exact quantification of the inflows and outflows across years and countries and with granular information on investors, issuers and asset type.

In this paper, we use a unique, accurate, and confidential data set derived from the Treasury International Capital (TIC) reporting system, which collects data on U.S. residents' holdings of foreign securities and on foreign residents' holdings of US securities. We find that dollar-denominated capital flows are increasingly intermediated by tax havens financial centers (THFC hereafter) and non-bank financial institutions. Figure 1 below shows this strikingly. The Figure breaks down all U.S. claims and liabilities by type of asset and, for liabilities, by type of investor (official versus private).<sup>1</sup> The growth in cross-border U.S. securities positions, mostly dollar-denominated, after the 2008 crisis is evident. U.S. private securities are mainly channelled through THFC, while U.S. treasuries are mainly held by foreign official investors.<sup>2</sup> The growth in private holdings reflects mainly holdings of equities of multinationals with affiliates abroad, while the growth in U.S. holdings of treasuries picks up in coincidence with quantitative easing policies worldwide. By exploiting the granular nature of our data set, we find that flows channeled through THFC are riskier and exhibit higher Sharpe ratios, hence it means that investors require higher returns for a given risk. This could indicate a search for yield behaviour of investors located there.

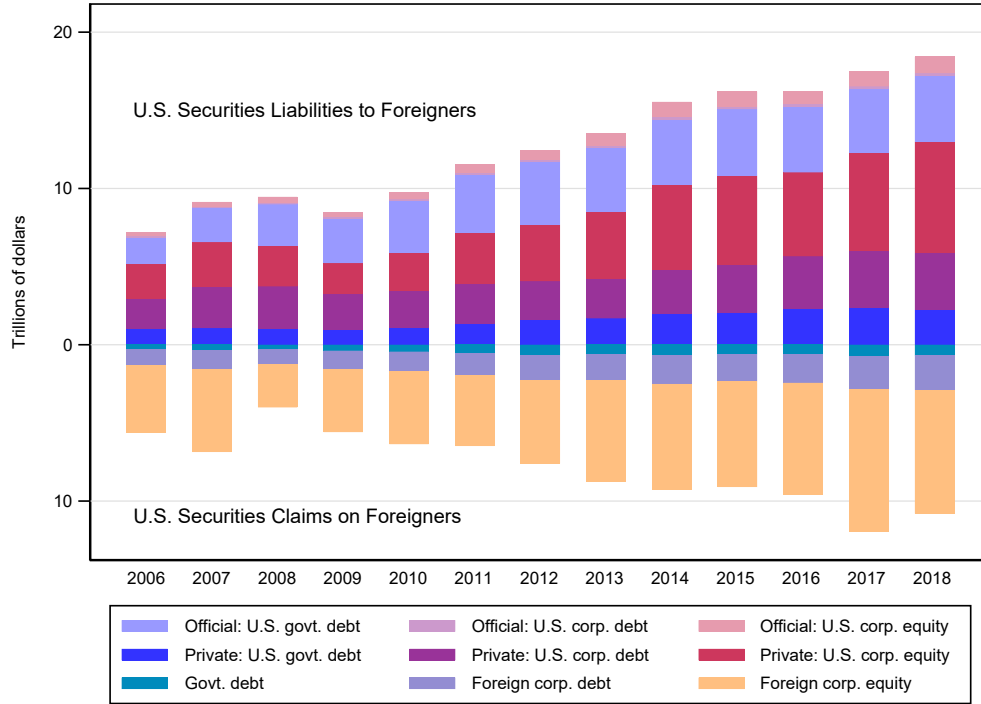
Our main finding is that the recent geographical trends of the flows, and of their heightened risk-return characteristics, are driven by tax avoidance and regulatory arbitrage, beyond the traditional global financial cycle variables, and that those motives are stronger for intangible-intensive firms. We structure our analysis as follows. We first present a set of detailed stylized facts. Next, we run an empirical analysis whereby we add indicators for corporate taxes and

---

<sup>1</sup>U.S. official securities claims are negligible (on the order of \$20 billion in 2019) and are included in TIC claims data.

<sup>2</sup>The TIC system collects data separately by country for foreign official and private investors, but break-downs by country for foreign official and private holdings are not published.

Figure 1. U.S. Liabilities and Claims



prudential regulations to the traditional set of global financial cycle variables. At last, we rationalize our results with a model featuring endogenous entry in tax havens and endogenous risk-taking.

The stylized facts provide many details on the micro origins. The increase in private U.S. claims and liabilities channelled through THFC, has been particularly marked around 2010, the year of the Dodd-Frank Act approval.<sup>3</sup> The growth has been larger for equities of multinationals or investment funds with foreign residence. Notably, the majority of U.S. equity shares in the Cayman Islands, the THFC which accounts for the largest portion of U.S. securities abroad, is in less-regulated mutual funds.<sup>4</sup> On the other side, over half (\$4.1 trillion out of \$6.7 trillion as of December 2019) of safe treasuries are held by the official

<sup>3</sup>An important caveat is that some of the increase from 2011 to 2012 represents an expansion in the reporting universe that accompanied the introduction of the TIC SLT in 2011. See Brandner and Judson (2012) and Bertaut and Judson (2014) for more details.

<sup>4</sup>We note here, and we elaborate more later, that in 2010 no important tax changes or events occurred in the THFC, but the Dodd-Frank Act was approved in the US.

sector (mostly Japan and China, other emerging markets, but also euro area) and their growth picked up at the time of quantitative easing policies.

It is important to stress that our data represent the most accurate measurement of U.S. cross-border asset positions. The confidential TIC data are based on official reporting by all significant U.S. custodians and U.S. end-investors holding securities abroad and by all significant U.S. custodians and issuers of U.S. securities held by foreigners.<sup>5</sup> Hence, contrary to data used in previous studies and extracted from industry analysts' reporting, credit agencies' reporting, or other private industry reporting, our data represent an official source with extremely granular coverage.<sup>6</sup>

Motivated by the above facts, we first revisit the empirical evidence with regard to the global cycle. Using the securities holdings data at our disposal, we run regressions with some standard global cycle variables (growth rate of the VIX, dollar exchange rate, Federal Funds Rate or shadow rate, Excess Bond Premium and the Variance Risk Premium (VRP)). First, for the official sector, holdings of equities and corporate bonds are unresponsive, while treasuries respond to risk and uncertainty indices and to the Dollar exchange rate. This confirms the large reliance of the official sector on safe assets.<sup>7</sup> On the contrary, for the private sector, only foreign holdings of equities and debt react and solely to risk and uncertainty indices, but are unresponsive to most other variables. The insignificance of most macro variables suggests that other micro motives might affect the flows.

To verify this conjecture, we run regressions on country level by adding to the list of variables two new candidates, namely indices for corporate taxes<sup>8</sup> and prudential regulation.<sup>9</sup> Private holdings of US equities and debt respond significantly to both variables, confirming tax avoidance and regulatory arbitrage channels. The response to corporate taxes might seem puzzling, given that no significant tax event was recorded for the Caribbean in our sample period. We conjecture that the expansion in the intangible-intensive economy might have allowed firms to benefit from tax avoidance. We confirm our conjecture by running industry level regressions, in which we control for an intangible-intensive index.

---

<sup>5</sup>This was done through a joint effort of the Treasury Department and the Federal Reserve

<sup>6</sup>See Chen et al. (2019) for recent remarks on this issue.

<sup>7</sup>Dollar sensitivity suggests reserve management (Alfaro and Kanczuk (2009); Alfaro et al. (2014))

<sup>8</sup>From the KPMG database

<sup>9</sup>From the Cerutti et al. (2017) database

Tax avoidance, regulatory arbitrage, and the involvement of less regulated funds suggests that private holdings might be risky. This can be verified by exploiting a unique granularity of the micro-TIC data. Our industry level flow data can be matched with industry-level risk metrics and Sharpe ratios. Assets of risky firms with intangible assets are bought mainly in tax havens; also, investors located in there require higher Sharpe ratios, requiring higher returns for a given risk, an indication of search for yield. Interestingly and surprisingly, flows channeled through emerging market economies are the safest.

The two main facts related to privately held securities, namely the increase in THFC flows and in debt risk, are rationalized through a general equilibrium model with multinationals entering THFC and funded by less-regulated global intermediaries. Firms, heterogeneous in their default probabilities, choose whether to shift profits to the THFC, paying a cost, and to enjoy a tax benefit. Firms fund their activity with risky debt obtained from global intermediaries. The latter have access to a global liquid market and, by enjoying a light regulation, can offer funds at low costs. Loan spreads are chosen based on an incentive-compatible contract and intermediaries choose their monitoring intensity endogenously. A fall in debt costs, triggered for instance by an exogenous increase in global liquidity channeled through the intermediaries, raises firms' profits. This has two contemporaneous effects. On the one side, a higher fraction of firms can afford to enter the THFC. This raises profits even further. On the other side, more profitable firms appear elusively safer and global intermediaries endogenously reduce their monitoring intensity. This in turn increases the firms' default probabilities, or their ex post risk.

The paper is organized as follows. Section 2 connects our paper to the literature. Section 3 presents the main facts. Section 4 and 5 contain the regression analysis. In section 6 we present the model.

## 2 Related Literature

The increase in foreign direct investment (FDI) in tax havens has been noted in a recent literature measuring the extent of profit shifting. Guvenen et al. (2017) and Tørsløv et al. (2018) both find, using different data sets, that much of the productivity slowdown observed

in the U.S. since 2004 can be explained by profit shifting and is larger for R&D intensive industries.<sup>10</sup> Similarly, Liu et al. (Forthcoming) document substantial profit shifting through transfer pricing by U.K. multinationals, also concentrated in the R&D-intensive sectors. Wright and Zucman (2018) examine the evolution of taxes paid by U.S. multinationals on their foreign profits since 1966 and show that an exorbitant tax privilege explains half of the U.S. cross-border return differential.<sup>11</sup>

In the international finance literature, recent papers by Lane and Milesi-Ferretti (2018) and Obstfeld (2018)) have noted the changing landscape of the capital flows geography, including the shift toward tax havens or financial centers, although their data set does not allow them to draw a clear map of the flows.<sup>12</sup> More recently, Bertaut et al. (2019) use the TIC data to document an increasing share of U.S. equity and debt claims in firms incorporated in low-tax jurisdictions and intermediated through mutual and hedge funds. Liu et al. (2019) also use TIC data to document a rapid growth in the use of CLOs, which, contrary to other safer debt-instruments, facilitate risk-recycling.

Our paper also relates to the literature documenting the increase of cross-border flows in U.S. dollar-denominated securities (see Lane and Milesi-Ferretti (2001), Obstfeld (2004), Board (2005), Forbes (2010) among others). Early works attributed the growth in dollar-denominated debt to the safe haven properties of the U.S. dollar and the specialty of Treasuries (Caballero et al. (2008), Mendoza et al. (2009), Gourinchas and Rey (2011), Maggiori (2017) among others). Recent papers (Maggiori et al. (Forthcoming), Lilley et al. (2019) or Coppola et al. (2019)) use private proprietary data from Morningstar to find that the dollar dominance might be even stronger than previously thought. The authors do not take a stand on the motives for it, though they relate to the safe-haven argument.<sup>13</sup> We also find that cross-border flows in dollar-denominated assets are increasing, and uncover new motives such as tax avoidance and regulatory arbitrage, noting that most of the private flows are actually risky. As for the outflows of U.S. Treasuries, very safe assets, we find that they

---

<sup>10</sup>See Hines (1996) for early work on this front.

<sup>11</sup>See also Curcuru et al. (2008).

<sup>12</sup>Several papers, including Antràs et al. (2009), Desai et al. (2004), assess the motives for firms' de-localization decisions, most, however, abstract from capital flows considerations.

<sup>13</sup>Bruno et al. (2018) and Avdjiev et al. (Forthcoming) question the safe-assets hypothesis for dollar-denominated securities and conjecture that global banks leverage in dollars to cover for the exposure in dollar assets.

are mainly held within the official sector and their growth coincides with quantitative easing policies.<sup>14</sup>

Finally, our paper relates to the recent literature noting measurements errors in the Balance of Payments entries due to the more complex structure of multinationals.<sup>15</sup> Bertaut et al. (2019) note that U.S. cross-border flows can be more appropriately measured based on the nationality, rather than on the residence, of the ultimate owner.

### 3 Facts

We start documenting some facts emerging from the TIC data at the country level and for different types of securities. The data are based on both the SHL/SHLA (liabilities) and SHC/SHCA (claims) surveys. These collect data on individual cross-border security holdings from custodians, end-investors, and issuers. Reporting is required by law. Appendix A describes the data in detail. The confidential TIC data, contrary to any other, provide granular information on the breakdown across countries, type of securities (treasuries, debt, equities, ABS, etc.), type of investors (official versus private) and issuers, and on the ultimate destination of the claims (equities of multinationals or of mutual funds).

The data analysis below uncovers the main trends, such as the change in the size of the flows, their main location and the securities that are most in demand. Facts and empirical results are reported for both, US holdings of foreign securities (occasionally referred to as claims) and foreign holdings of US securities (occasionally referred to as liabilities).

First, Figure 2 shows that tax havens, and in particular Cayman Islands, rank in the top 10 destinations for both U.S. claims and liabilities and that their share has increased over time with a jump around 2010.

Second, Figure 3 shows that flows, in and out, have been growing over time, particularly for equities. Debt liabilities have been growing, too.

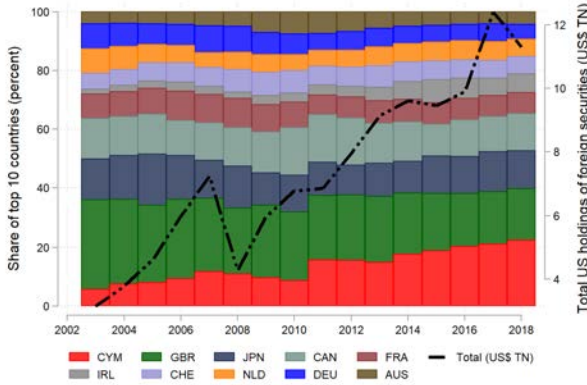
Next we examine the breakdown of the data by asset class, currency denomination and other features. We start with U.S. claims. Figure 4 shows the U.S. claims by country

---

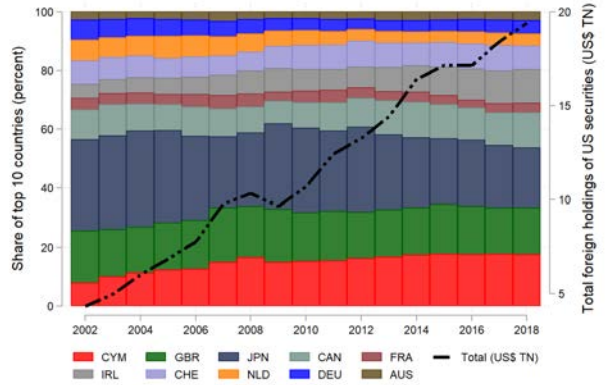
<sup>14</sup>See Alfaro and Kanczuk (2009) and Alfaro et al. (2014) for the role of reserve accumulation and the role of sovereign flows.

<sup>15</sup>See Avdjiev et al. (2018)



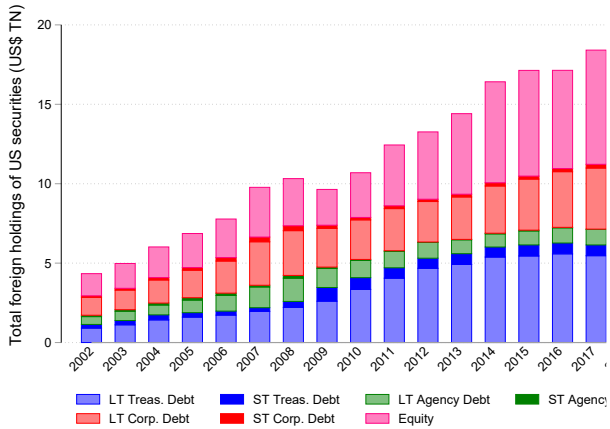


(a) Claims

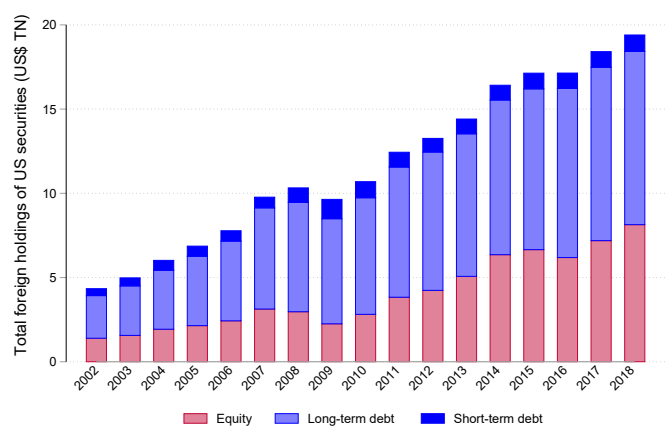


(b) Liabilities

Figure 2. U.S. Claims and Liabilities of Top 10 Countries



(a) Liabilities



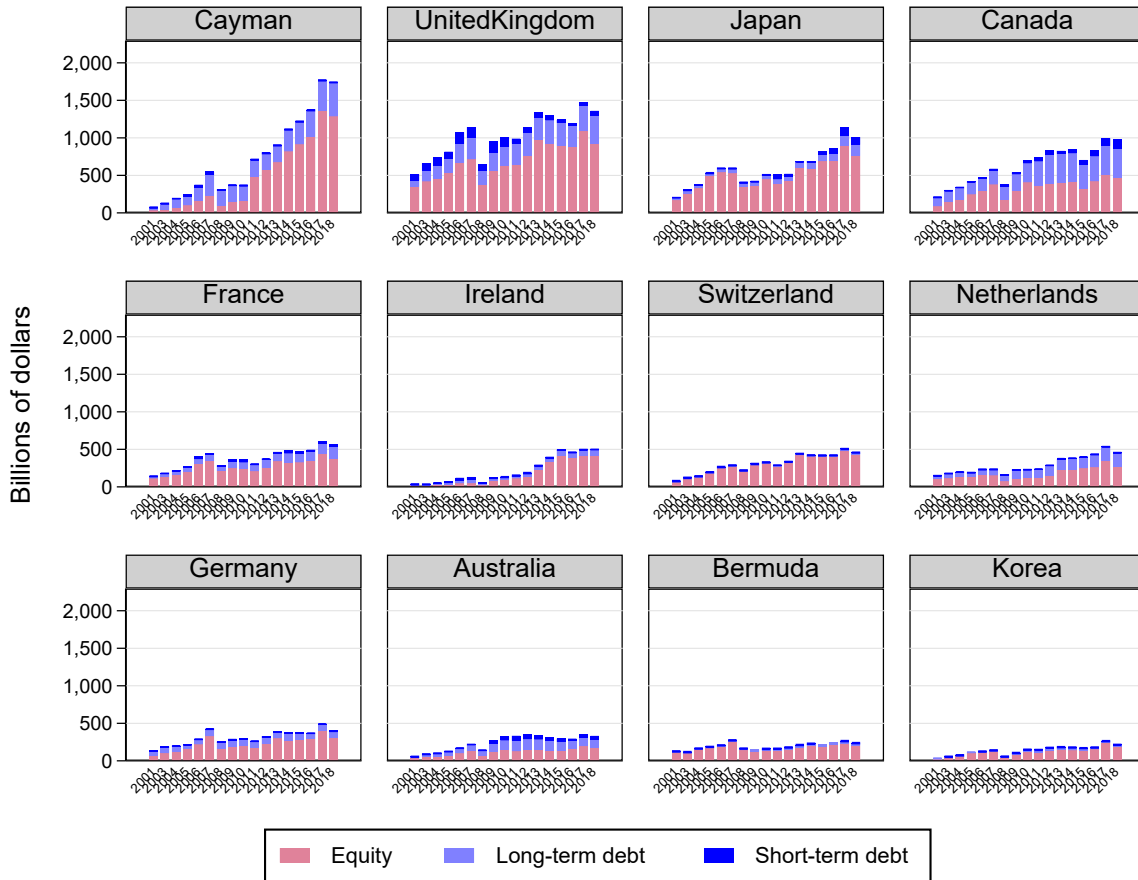
(b) Claims

Figure 3. U.S. Liabilities and Claims per Type of Securities

and security type (on a common scale), for the set of countries attracting the most U.S. investment. The unprecedented growth of securities from the Cayman Islands and other offshore centers is evident starting in 2010. Most of it is equities. The increasing share of equity in total claims emerges also from Figure 5, which shows the time series evolution of the flows.

Figure 6 breaks down the type of equities in common stocks, fund shares and others. The Cayman Islands stand alone as receiving the vast majority of U.S. inflows the form of fund shares. This reflects ownership by U.S. residents of funds (i.e. non-banks) that intermediate capital in the Cayman Islands. Similarly, figure D.1 in the Appendix shows that the holdings

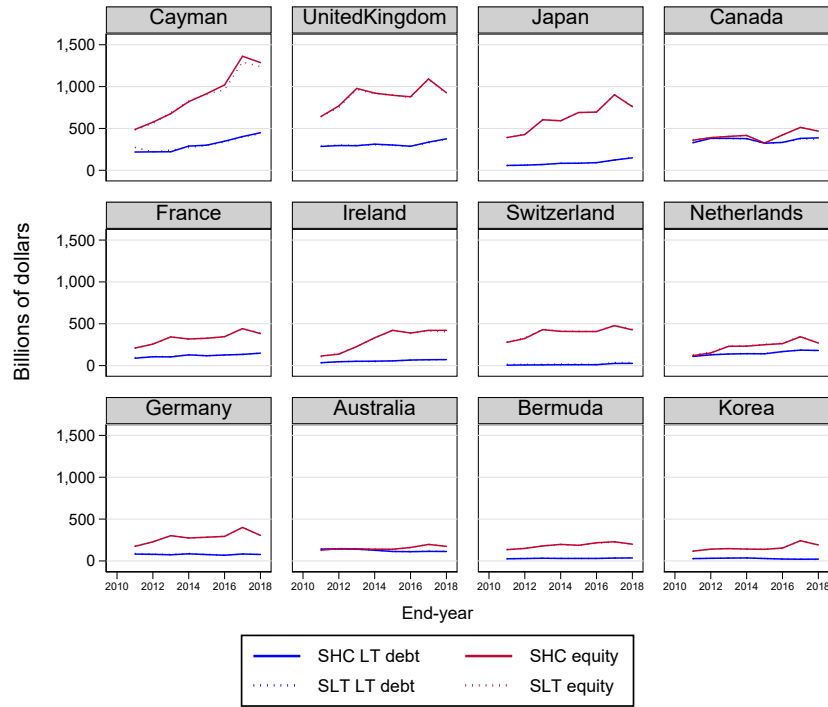
Figure 4. Market Value of U.S. Holdings of Foreign Securities



Source: TIC SHC. Data as of year-end.

of common stocks and foreign depository receipts are the largest in the Cayman Islands, too. These claims are most likely holdings of equities by affiliates of multinationals. In summary, recent data show an increase of U.S. claims towards THFC, which mainly the form of equities or corporate debt investments in multinationals or less-regulated funds intermediating from the Caribbean. In terms of currency denomination, figure 7 shows that asset holdings in THFC are all in U.S. dollars. On the contrary, in other countries (Europe or EMEs) the share of foreign currency-denomination has been increasing starting from 2012. Dollar dominance is predominant in THFC, but not in European countries.

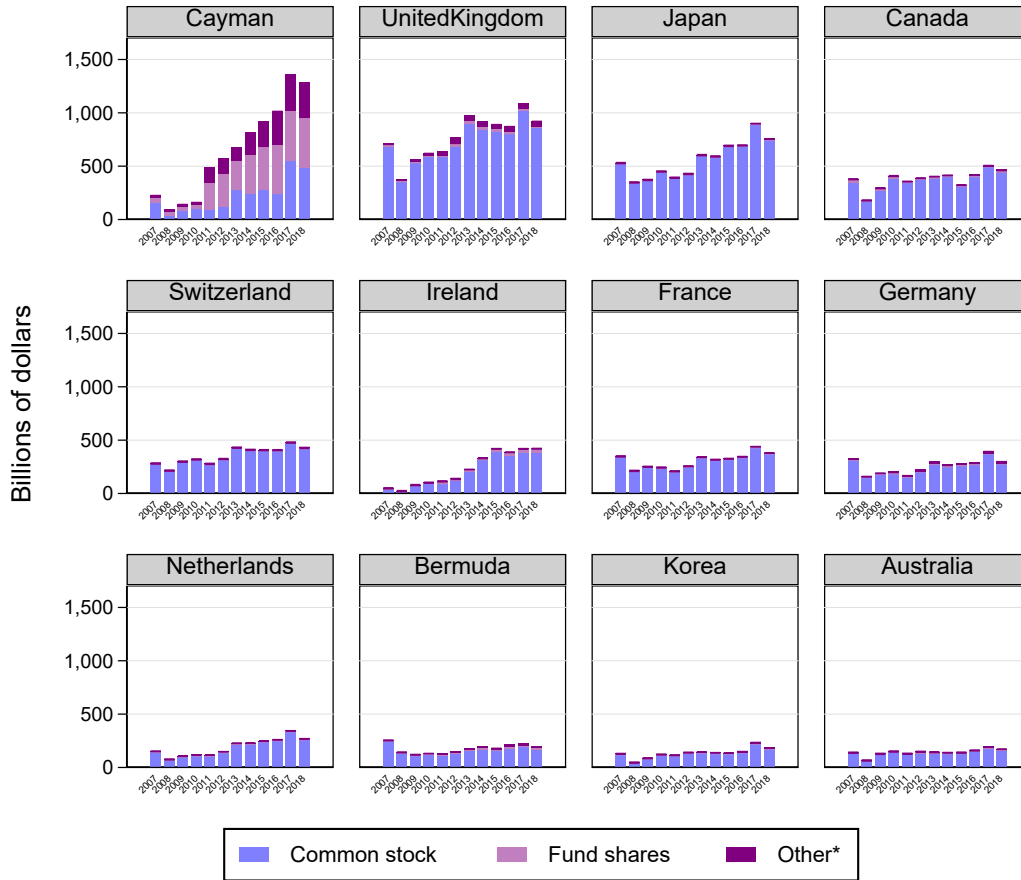
Figure 5. U.S. Holdings of Foreign Long-Term Securities



Source: TIC SHC and SLT. Data as of year-end.

Next we examine U.S. liabilities. This is an essential aspect for a country whose global imbalances have been under the microscope for long. Figure 8 shows the breakdown of foreign holdings of U.S. securities by the official and the private sectors. The most interesting aspect is the dominance of U.S. treasuries in the foreign official sector. Equities and corporate debt are instead held by private investors. The growth of the treasuries within the official sector has increased significantly at the time of quantitative easing policies. The same is visible from Figure D.2 in Appendix D. At last, likewise for claims, also U.S. liabilities privately held in the Cayman Islands are by and large in the form of equities and corporate bonds and have been growing since 2010. Figure 9 shows the breakdown of U.S. liabilities by country. Again, most of the equities are held by investors in Cayman Islands and Luxembourg, while most of the treasuries are held by Japan and increased at the time of quantitative easing. Finally, Figure 10 shows that most of the debt in the Cayman Islands is in the form of asset-backed securities (ABS). ABS are a method to recycle risk onto the market and, as

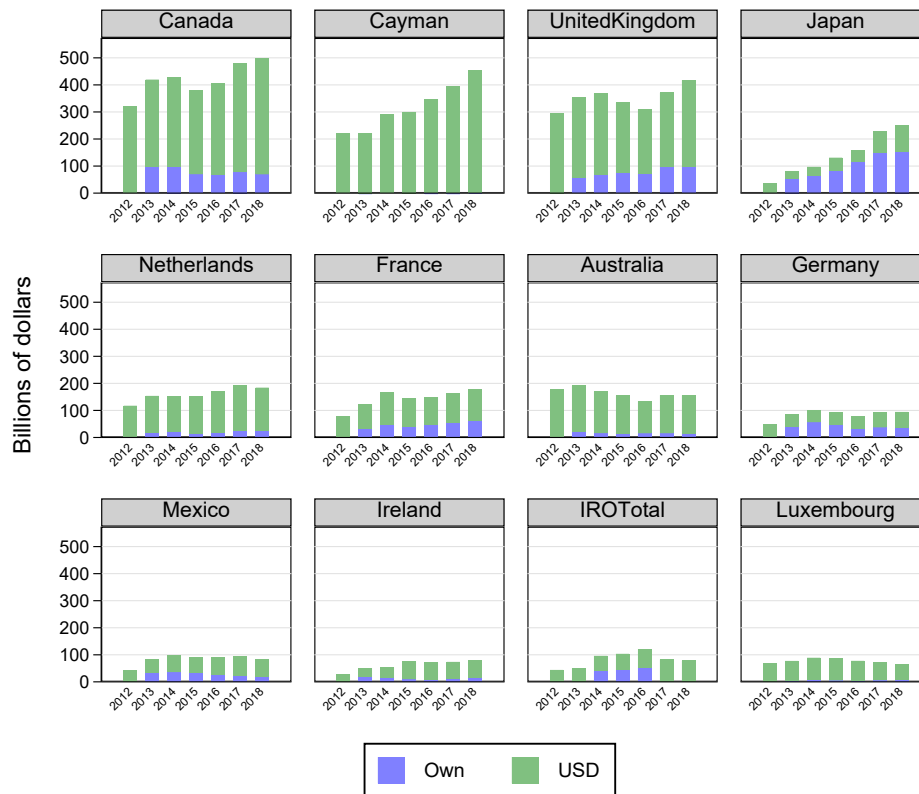
Figure 6. U.S. Holdings of Foreign Equity by Country



Source. TIC. \*Other includes fund shares and other equity.

such, they have often been linked to reduced debt monitoring and higher ex post risk. We will examine the risk profile of THFC assets in section 4.

Figure 7. U.S. Holdings of Foreign Securities by Country and Currency

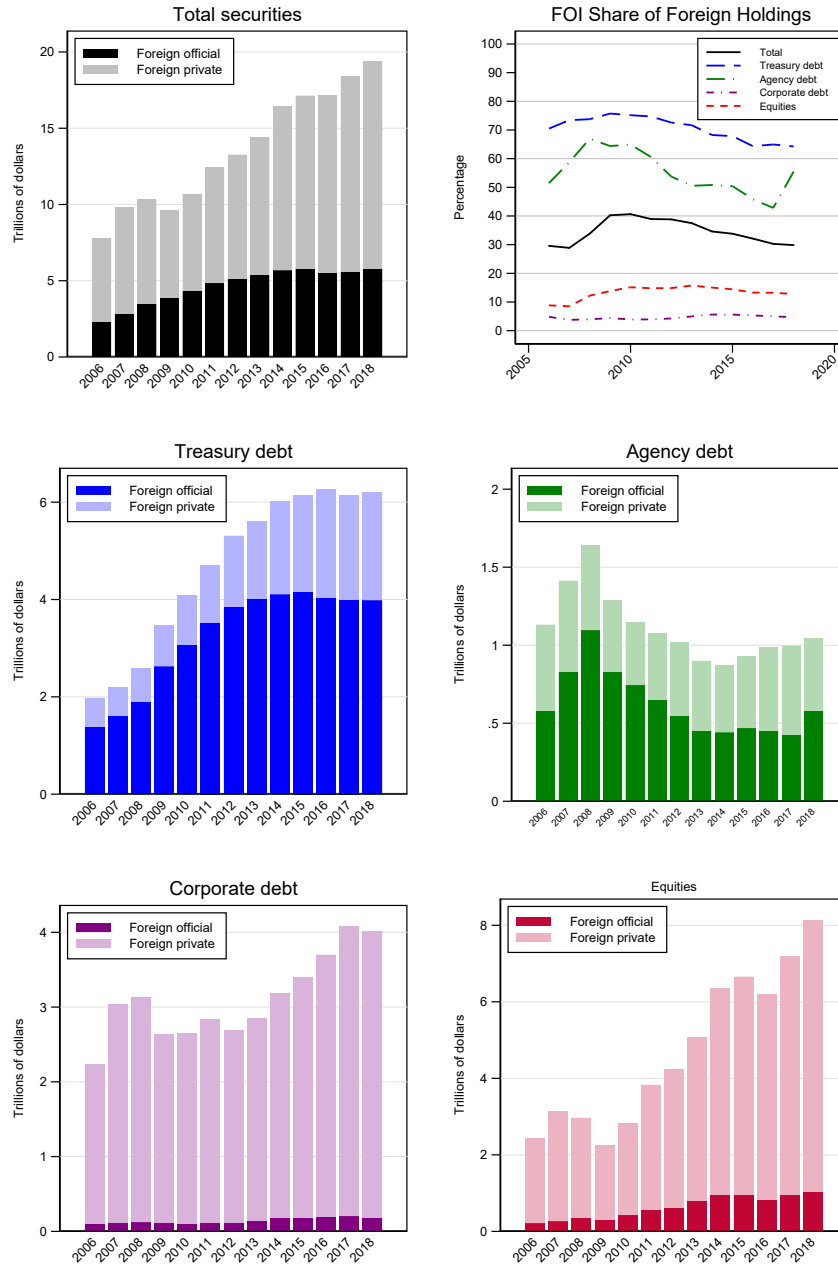


Source. TIC SHC.

## 4 Empirical Analysis - Macro and Micro Determinants of Flows

Beyond an increase in flows of U.S. securities, two main trends emerge from the previous data analysis. First, there is an increase in private U.S. claims and liabilities toward THFC. The flows have trended up mostly around 2010, a year in which most advanced economies had tightened prudential regulations. The fact that most of these flows are intermediated through less-regulated funds seems to suggest a correlation with those events. Second, one can see an increase of U.S. Treasury securities abroad, mostly held by the official sector and mostly around the dates of quantitative easing policies. These facts together suggest that a combination of macro and micro factors are behind the recent trends in flows. We start by

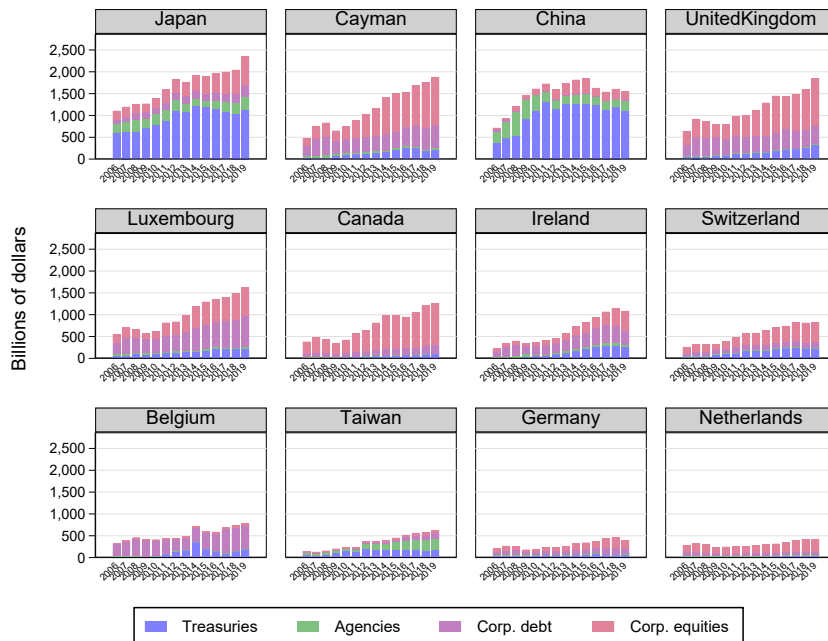
Figure 8. Foreign Official and Private Holdings of U.S. Securities



Source: TIC SHL.

examining the macro determinants, running empirical specifications with traditional global financial cycle variables. In a second step, two additional variables are considered, namely indices for corporate taxes and prudential regulations. This second set of variables captures

Figure 9. Foreign Holdings of U.S. Securities by Country



Source: TIC SHL. Data as of end-June.

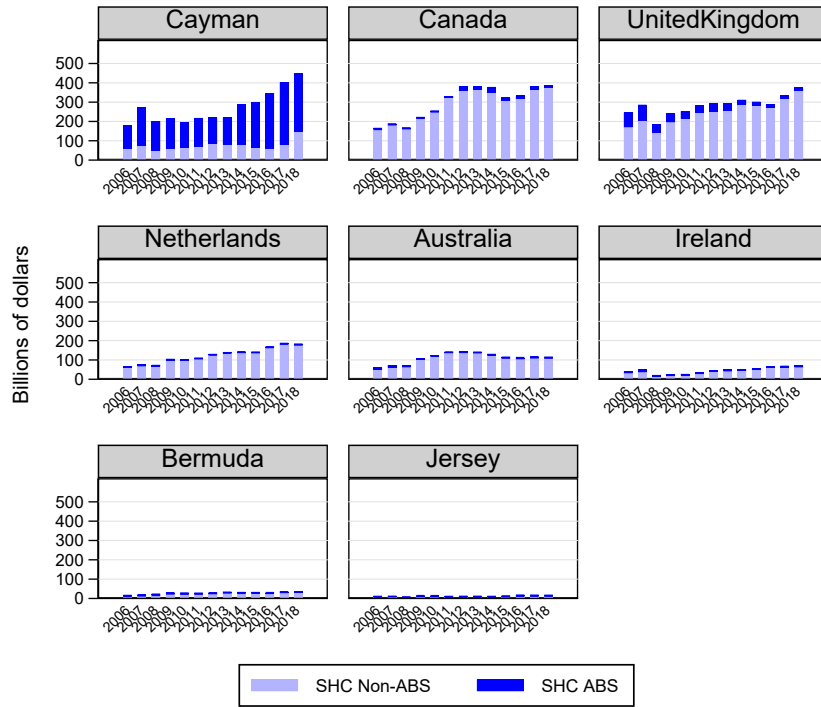
best the micro origins related to firms' and investors' incentives for international trading.

The empirical specification below revisits the classical analysis featured in the literature on the global financial cycle. Our benchmark regression specification takes the following form:

$$\Delta flow_t^{i,a} = B X_t + \epsilon_t, \quad (1)$$

where the dependent variable,  $flow_t^{i,a}$ , is the ratio of the capital flows in each asset class  $a$  (treasuries, equities or corporate bonds for U.S. liabilities; long-term debt and equities for U.S. claims) for investor type  $i$  (foreign official or foreign private for U.S. liabilities) in month  $t$  over the previous month's position for that asset class and investor.  $X_t$  is a set of macro controls, which include the growth rate of the VIX, the change in the excess bond premium (from Gilchrist and Zakrajšek (2012)), the Fed Funds rate (or the Wu-Xia shadow rate during the zero-lower-bound period), the U.S. term spread, the quarterly U.S.

Figure 10. ABS Debt and Non-ABS Debt



Source: TIC SHC.

unemployment outlook from the Survey of Professional Forecasters, the Federal Reserve Broad Dollar index, the U.S. variance risk premium (from Londono and Zhou (2017)), the 3-month Treasury basis (from Du et al. (2018)), the EMBI spread, and the oil price. The VIX is taken as a measure of risk and the VRP as a measure of uncertainty. More details on the variables' definitions are in the data Appendix.

The baseline sample for U.S. liabilities is at a monthly frequency for the years 2003 to 2018, while the baseline sample for U.S. claims is from 2002 to 2018. Monthly flows are constructed from survey reports following the procedures developed in Bertaut and Tryon (2007).

Table A1 shows results for private foreign holdings of U.S. securities. Equities and corporate debt respond to some of the global financial cycle variables, while treasuries are unresponsive. This is well in line with our previous observation that the private sector mainly holds equities and debt, hence it is plausible that these flows are the most responsive. They



seem to respond solely to the VIX, the VRP and the EMBI, both for liabilities and claims (shown in Table A3). In other words, the equity and debt demand declines when risk and uncertainty rise. Private flows seem to be unresponsive to numerous other financial cycle and macro variables. This suggest that other, rather micro determinants, might be affecting private flows — a fact that we examine in the next section.

Table A2 shows results for holdings of U.S. securities of the foreign official sector for all asset classes. In this case it is mostly treasuries which react to some of the global financial cycle variables. They fall when the VIX and the VRP rise, or when the unemployment outlook and the EMBI spread worsen. Hence, when US risk and uncertainty raise, treasuries are perceived as less safe and the official sector reduces its holdings. U.S. treasuries also respond to changes in the dollar exchange rate. This last result is in line with traditional motives of reserve management.

In light of the above findings and of the facts uncovered in section 3, we conjecture that the substantial shift in private flows toward THFC was largely driven by other factors related to issuers' and investors' incentives. The increasing flows in and out of offshore locations suggests that tax avoidance considerations and regulatory arbitrage, following the tighter regulation enacted in most advanced economies after the 2007-2008 financial crisis, are potential explanations. Hence, to the list of variables considered above we add corporate taxes<sup>16</sup> and prudential regulation indices<sup>17</sup>. For those regressions we focus on liabilities and we run them per type of securities, namely treasuries, equities and corporate bonds. When we add the new variables, we find that equities held by the private sector react significantly to corporate taxes and to prudential regulation (see Table A4), while treasuries do not respond to any. Once more, since the private sector holds mainly equities and debt, it is these asset classes that respond more to taxation and regulation. These results give clear indications that tax avoidance or regulatory arbitrage play an important role. However, for assets held by the official sector the picture is reversed (see Table A5). It is mainly treasuries that respond and primarily to the prudential regime.

---

<sup>16</sup>From the KPMG database.

<sup>17</sup>From the Cerutti et al. (2017) database.

The significance of the estimates in this new set of regressions is remarkable given the short time span at our disposal and the fact that regulations and tax codes tend to remain relatively constant over time. Still, the responsiveness to tax codes seem puzzling since, while prudential regulation has changed significantly during the sample period considered, the de facto tax code in the Caribbean had not changed much. We conjecture that the expansions in the intangible-intensive economy makes multinationals more prone to relocate and to benefit from tax avoidance. Most of their capital is made of patents and royalties that are easily movable across locations. To verify whether this hypothesis holds true, we regress the holdings of U.S equities and corporate bonds by private foreign investors on countries' tax rates at the industry level (see Table A6). Now we include an interaction term consisting of the tax rate multiplied by an index of intangible asset intensity in the regression. We find that when tax rates decrease in a country, its residents buy relatively more U.S. equities and corporate bonds in industries with an intangible asset intensity in the top quartile (column 4). Results are robust to including country-year and industry-year fixed effects (columns (5) and (6)).

## **5 The Micro Origins of Capital Flows: Tax Haven Financial Centers Invest in Riskier Firms**

The previous empirical analysis highlighted that privately issued and held flows are correlated with risk and uncertainty, more than with other variables capturing the global financial cycle. Tax avoidance and regulatory arbitrage, which are behind an upsurge in THFC flows, are also likely to be conducive to risk-taking behaviour. Motivated by these findings, we move our investigation a step further and examine the risk-return profile of flows. This provides further insights into the nature of micro incentives driving those flows.

We exploit a unique sectorial level granularity of the micro TIC data. For this purpose, we match our industry-level flow data with industry-level risk metrics and also with the corresponding Sharpe ratios. The first inform us about the origins of asset risk, which indeed seems to be of micro rather than macro or country origin. The second instead allow

us to identify the existence of investors' search for yield. Should investors intermediated through THFC require higher excess returns relative to intrinsic risk, this would indicate that appetite for yield, more than for safety, is the driving force behind these investments. A clear tendency emerges. Securities traded through THFC, in and out, are those of riskier firms that invest in intangibles and have higher Sharpe ratios. Tax havens are yield-havens more than safe-havens. Intangible-intensive firms are both more easily movable across borders, but also more geared toward a business with more uncertain returns. The collateral that they can offer against debt funding is also of more uncertain valuation compared to firms in more traditional manufacturing sectors. Interestingly, our results on investors' required returns mirror the ones found in recent studies on inequality, whereby high sophisticated and high net-wealth investors make large use of the tax-dodging industry and seek for high Sharpe ratio securities (see Tørsløv et al. (2018), Wright and Zucman (2018), Piketty (2014) or more recently Piketty and Zucman (2014) and Jordà et al. (2019)). All results are shown in the next section for liabilities, first, and claims, next.

## 5.1 U.S. Liabilities

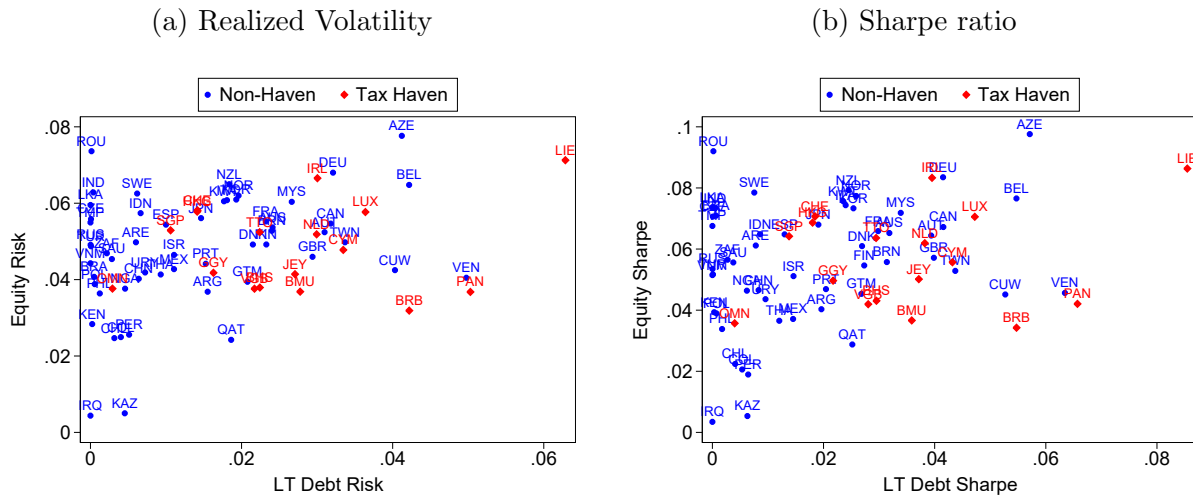
The unique granularity of our flow data allows us to shed light on which investors buy U.S. denominated assets, why they do so and through which countries they channel their investments. Throughout we use realized volatility at the industry level as our main risk metric, but results are robust to alternative risk metrics (for instance those controlling for Fama and French factors).

Panel (a) of Figure 11 shows that tax havens hold riskier U.S. debt liabilities, while no clear pattern emerges for equity. There are several reasons for which riskier firms rely on investors in THFC to buy their debt. Riskier firms find it harder to seek funding through traditional domestic banking systems, currently subject to tighter regulations. Most likely, riskier firms are those with higher investment in intangibles, which typically have more uncertain valuations. For those firms it is harder to fund their investment through traditional collateral-based intermediation. We will return to this point in section 5.3. THFC, which, as shown earlier, are populated by global mutual funds, may offer easier access to liquid investors. The investor side is not less interesting. Panel (b) of Figure 11 shows that investors

located in tax havens require higher Sharpe ratios, hence higher returns per intrinsic risk. Figure 12 confirms the positive correlation between risk and Sharpe ratios. This is a clear indication of a search-for-yield behavior. This result parallels the compelling finding of the recent literature examining the origins of wealth inequality (see Tørsløv et al. (2018), Wright and Zucman (2018), Piketty (2014) or more recently Piketty and Zucman (2014) and Jordà et al. (2019)), which finds that rich and sophisticated investors seek high Sharpe ratio securities.

The connection between the shift to tax havens and an increase in risk will be rationalized in the model that we present in section 6. In there, an increase in global saving lowers loan rates and spreads, by increasing the supply of credit. The ensuing raise in profits has two consequences. First, it raises the fraction of firms that can afford the cost to relocate in a tax haven and to benefit from the tax discounts. Second, firms appear more profitable and, because of this, global intermediaries reduce their monitoring incentives. This in turn increases ex post firms' probability of default, hence their debt risk. We will return to this mapping in section 6

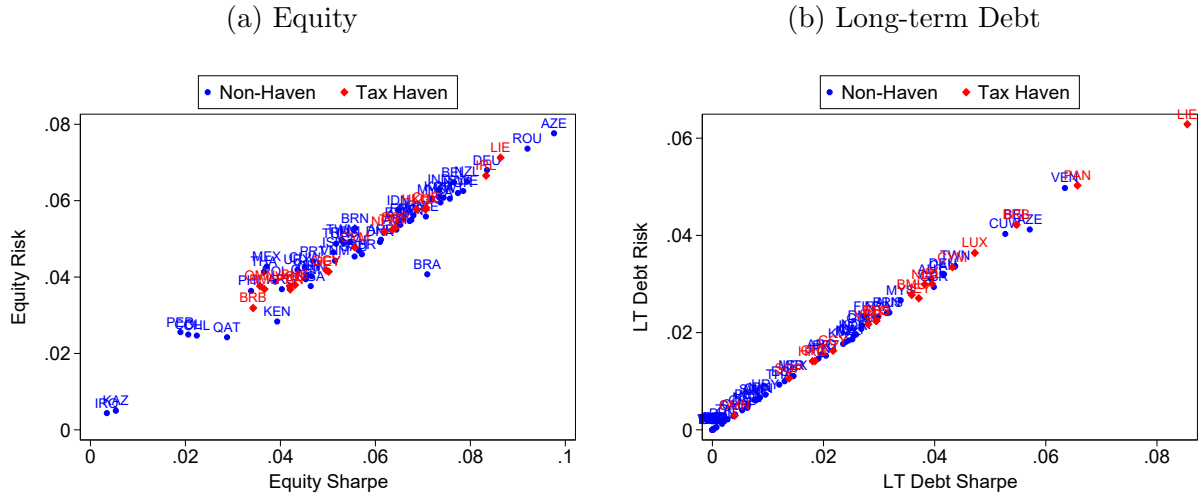
Figure 11. Realized Volatility and Sharpe Ratios for U.S. liabilities



*Notes:* This figure plots the weighted average of industry-level realized volatilities and Sharpe ratios for U.S. liabilities by holding country in 2018. The x-axes show weighted averages for foreign holdings of U.S. long-term debt and the y-axes show weighted averages for foreign holdings of U.S. equity.

For the figures presented so far we focused on 2018 as a representative year of the most recent trends. We now examine the time series trends in search of the trigger for the sharp increase in investments flows to and from THFC. Panel (b) of Figure 13 shows that the

Figure 12. Realized Volatility and Sharpe Ratios of U.S. Liabilities

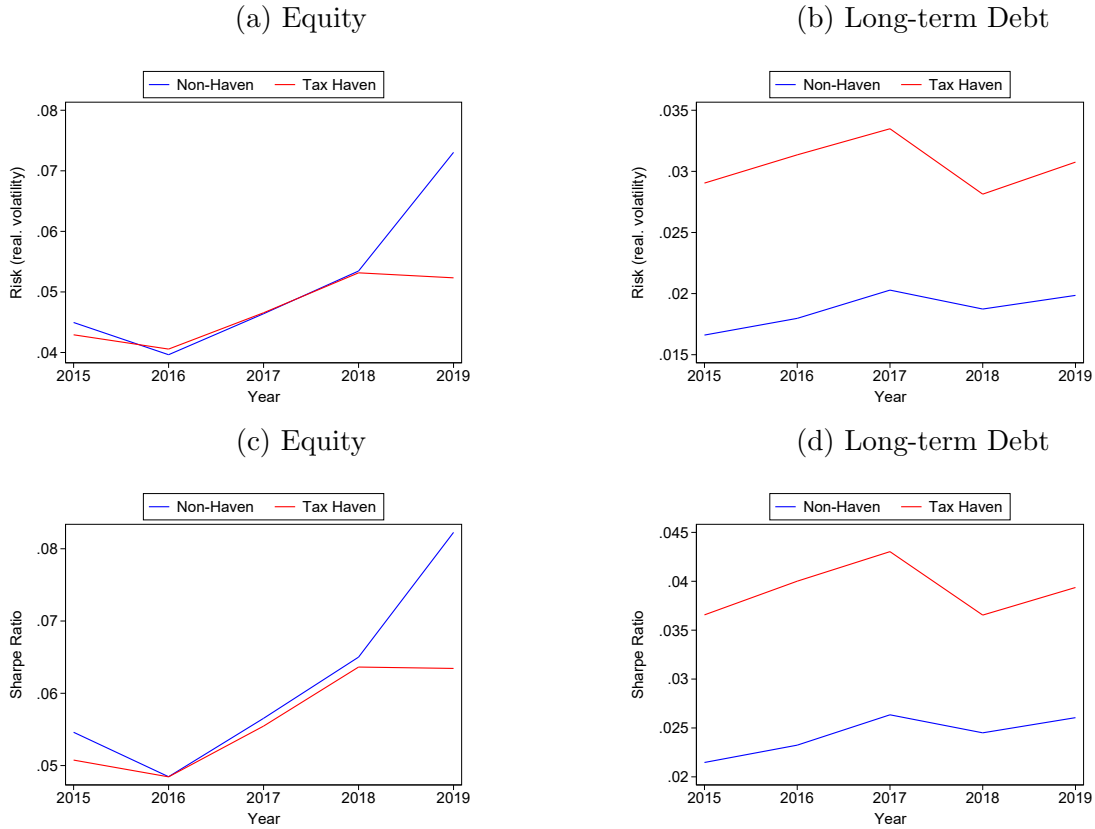


*Notes:* This figure plots the weighted average of industry-level realized volatilities and Sharpe ratios for U.S. liabilities by holding country in 2018. The x-axes show weighted averages of realized volatilities and the y-axes show weighted averages of the Sharpe ratios.

average industry risk of U.S. debt held by tax havens has been significantly and consistently higher than the risk of U.S. debt held by other countries. Similar trends are detectable for Sharpe ratios (Panel (d) of Figure 13). The demand for risky assets is unquestionably located in THFC. Despite a small decline in 2017, risk picked up again in 2018. This is interesting since it coincides with the approval of the US corporate tax cut. Riskier firms do not seem to have a desire to repatriate. As for equities (Panels (a) and (c) of Figure 13), there is no significant difference in risk and Sharpe ratios between tax havens and other countries. However, both geographical areas experienced an upsurge in average industry risk in recent years. This increase in risk may be driven by a higher growth rate of assets within riskier industries. It could also reflect search-for-yield behavior of foreign investors that may be shifting their portfolios towards riskier assets.

At last, Table 1 confirms the evidence shown in the preceding figures. Tax havens tend to hold riskier U.S. debt than other investors, with no significant difference for equity holdings. Emerging markets, in contrast, tend to invest in safer U.S. debt and safer U.S. equities.

Figure 13. Trends in Average Risk and Sharpe Ratios of U.S. liabilities



*Notes:* This figure plots the time series of the weighted average of industry-level realized volatilities and Sharpe ratios for U.S. liabilities by country type from 2015 to 2019. Panels (a) and (b) show average weighted realized volatilities. Panels (c) and (d) show average weighted Sharpe ratios.

## 5.2 U.S. Claims

THFC also play a key role in the intermediation of risky assets for U.S. investments abroad. Panels (a) and (b) of Figure 14 show that U.S. residents buy significantly riskier and higher yielding debt securities in THFC than in other countries. In parallel to our previous analysis, there is no significant difference in risk or Sharpe ratios for U.S. equity holdings abroad. These results are also reflected in the time series trends, shown in Figure 15 and Table 2.

## 5.3 Evidence on Intangibles and Risk Combined

To shed more light on the firms' characteristics that make riskier assets flow through tax havens, we further match our data set with a measure of intangibility. We rely on the

Table 1. Average Risk of U.S. Liabilities

	Real. Volatility		Sharpe Ratio	
	(1) Equity	(2) Debt	(3) Equity	(4) Debt
Tax Haven	0.00112 (0.00190)	0.0120*** (0.00215)	0.000532 (0.00237)	0.0152*** (0.00281)
Advanced Economy	-0.0000962 (0.00241)	-0.000250 (0.00161)	-0.00211 (0.00302)	-0.0000362 (0.00206)
Emerging Market	-0.00935*** (0.00217)	-0.0112*** (0.00142)	-0.0164*** (0.00262)	-0.0143*** (0.00183)
Other Countries	-0.00783** (0.00308)	-0.00668** (0.00269)	-0.0132*** (0.00384)	-0.00843** (0.00347)
Observations	352	352	352	352
$R^2$	0.158	0.141	0.169	0.139

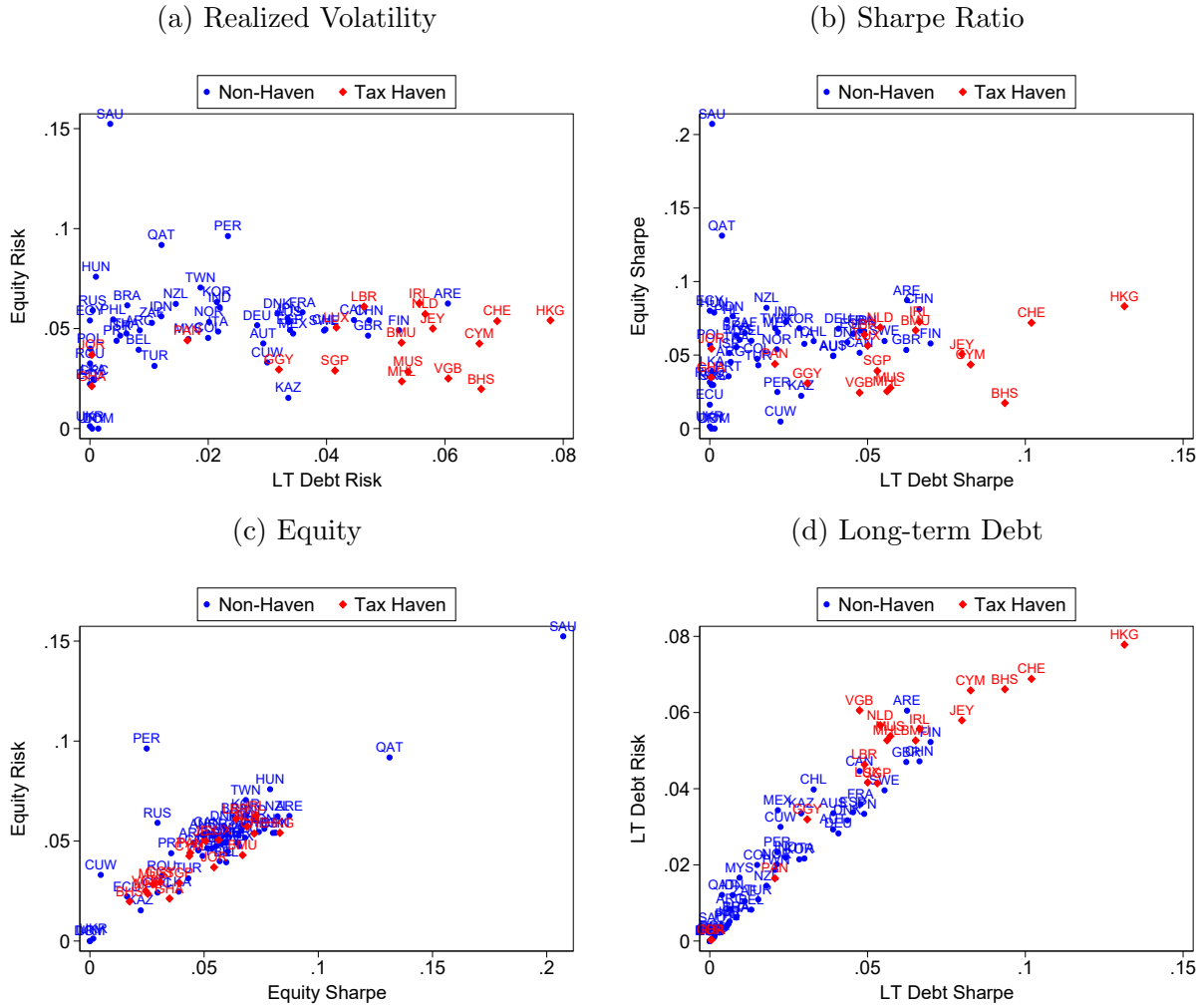
*Notes:* This table presents regression results on the weighted average risk of U.S. liabilities by country type. The dependent variable in columns (1) and (2) ((3) and (4)) is the weighted average industry-level realized volatility (Sharpe ratio) of U.S. debt and equity liabilities by holder country. The sample runs from 2015 to 2019 for 81 countries. Robust standard errors are shown in parentheses. Key: \*\*\* significant at 1%; \*\* 5%; \* 10%.

measure constructed by Peters and Thomas 2014, which combines both R&D and marketing expenditures. The recent rapid growth of the intangible-intensive economy is well-known. Less known is the strong link between intangible-intensive industries and asset-risk and most importantly between intangible risky assets and tax havens. This is illustrated in Figure 16. Firms with intangible inputs and capital hold very risky collateral, something which can prevent them from obtaining funds in the traditional banking system. Moreover, intangible-intensive firms find it easier to relocate activities or assets to THFC as there is less need of a proximity between the credit line and the plants.

## 6 A Model of Multinationals and Risky Funding

Our data have highlighted numerous facts, among which two are the most novel and relevant trends for the privately held flows. The first is the increase in flows toward tax havens and the second is a correlation between risk and the share of THFC flows. We now lay down a simple model which can rationalize these two main trends.

Figure 14. Realized Volatility and Sharpe Ratios for U.S. claims



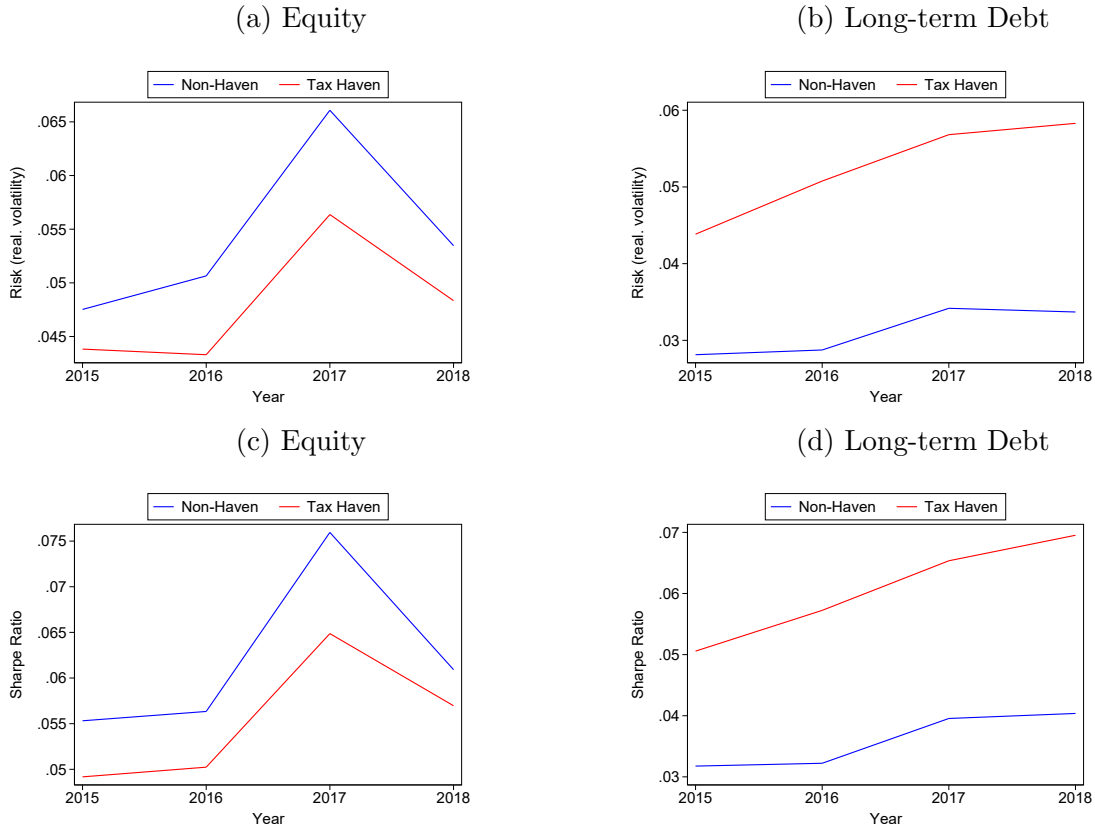
*Notes:* This figure plots the weighted average of industry-level realized volatilities and Sharpe ratios for U.S. claims by holding country in 2018. In Panels (a) and (b), the x-axes show weighted averages for U.S. holdings of foreign long-term debt and the y-axes show weighted averages for U.S. holdings of foreign equity. In Panels (c) and (d), the x-axes show weighted averages of realized volatilities and the y-axes show weighted averages of the Sharpe ratios.

In the model, multinationals, heterogeneous in their default probabilities, endogenously choose, against the payment of an entry cost, to shift profits in a THFC, where they enjoy a tax discount.<sup>18</sup> Firms fund their activity with risky debt obtained from global intermediaries. The latter have access to a global liquid market and, by enjoying a light regulation, can offer funds at low costs. Loan spreads are chosen based on an incentive-compatible contract

<sup>18</sup>Beyond our own facts, there is extensive empirical evidence on the relevance of profit shifting, see e.g. Guvenen et al. (2017) or Liu et al. (Forthcoming).

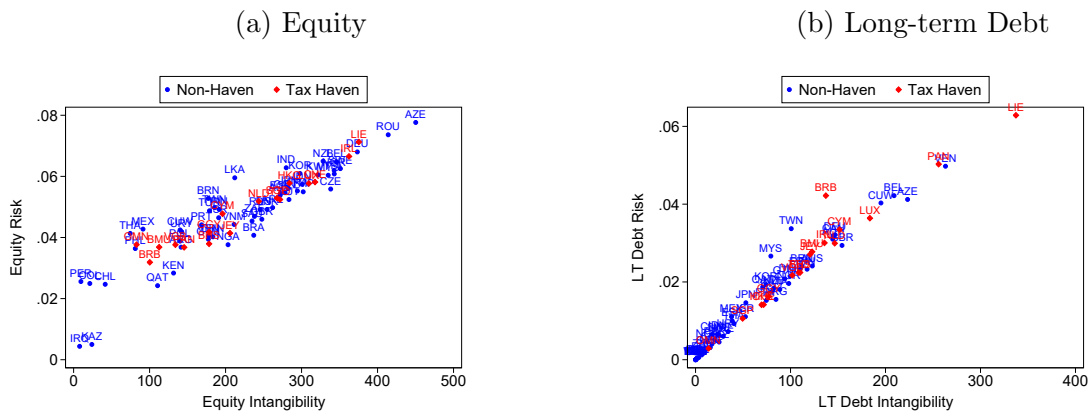


Figure 15. Trends in Average Risk and Sharpe Ratios of U.S. Claims



Notes: This figure plots the time series of the weighted average of industry-level realized volatilities and Sharpe ratios for U.S. claims by country type from 2015 to 2019. Panels (a) and (b) show average weighted realized volatilities. Panels (c) and (d) show average weighted Sharpe ratios.

Figure 16. Realized Volatility and Intangibility for U.S. liabilities



Notes: This figure plots the weighted average of industry-level realized volatilities and asset intangibility for U.S. claims by holding country in 2018. The x-axes show weighted averages of realized volatilities and the y-axes show weighted averages of asset intangibility.

Table 2. Average Risk of U.S. Claims

	Real. Volatility		Sharpe Ratio	
	(1) Equity	(2) Debt	(3) Equity	(4) Debt
Tax Haven	-0.000155 (0.00262)	0.0230*** (0.00252)	0.00293 (0.00320)	0.0312*** (0.00323)
Advanced Economy	0.00411 (0.00788)	-0.0116*** (0.00203)	-0.00439 (0.00727)	-0.0110*** (0.00247)
Emerging Market	0.00454 (0.00761)	-0.0214*** (0.00210)	-0.00206 (0.00675)	-0.0267*** (0.00266)
Other Countries	-0.00970 (0.00827)	-0.0244*** (0.00316)	-0.0256*** (0.00794)	-0.0326*** (0.00381)
Observations	264	264	264	264
$R^2$	0.246	0.330	0.267	0.418

*Notes:* This table presents regression results on the weighted average risk of U.S. claims by country type. The dependent variable in columns (1) and (2) ((3) and (4)) is the weighted average industry-level realized volatility (Sharpe ratio) for U.S. residents' claims on foreign debt or equity. The sample runs from 2015 to 2018 for 72 countries. Robust standard errors are shown in parentheses. Key: \*\*\* significant at 1%; \*\* 5%; \* 10%.

and intermediaries choose their monitoring intensity endogenously. A fall in debt costs, triggered for instance by an exogenous increase in global liquidity channeled through the intermediaries, raises firms' profits. This has two contemporaneous effects. On the one side, a higher fraction of firms can afford to enter the THFC. This raises profits even further. On the other side, more profitable firms appear elusively safer and global intermediaries endogenously reduce their monitoring intensity. This in turn increases the firms' default probability, or their ex post risk.

## 6.1 Model Structure

There are two countries, a large country,  $F$ , and a tax haven. We will continue to use the label THFC. For simplicity, we assume that firms can only produce in the large country. In the large country, there are two sectors, one producing a homogeneous good that serves as a numeraire, and one sector with heterogeneous firms producing different varieties. Firms are heterogeneous with respect to their default risk and endogenously decide whether to become multinationals. This requires opening an affiliate in the THFC. Firms have a fixed cost of entering the THFC, where they benefit from tax savings through profit shifting.

Given the heterogeneity in default probabilities, only a fraction of them opens an affiliate in the THFC. Production is funded through risky debt, whose rate is determined within an incentive compatible contract with a global intermediary. The latter chooses monitoring intensity endogenously (see Martinez-Miera and Repullo (2017)). Riskier firms pay higher credit spreads, with the latter given by the safe rate plus a premium related to the monitoring intensity. Lenders are global funds located in the THFC, which collect savings worldwide and issue corporate debt to multinationals.<sup>19</sup>

### 6.1.1 Consumers' Preferences

There is a unit mass of identical workers that share the same quasi-linear preferences over consumption of the two goods:

$$U = \alpha \ln Q + q_0 \text{ with } Q = \int_{\Omega} (q(\omega)^{\frac{\sigma-1}{\sigma}})^{\frac{\sigma}{\sigma-1}}, \quad (2)$$

where  $q(\omega)$  is the quantity consumed of variety  $\omega$ . The elasticity of substitution between varieties is given by  $\sigma > 1$ .  $Q$  is aggregate consumption of a preference weighted basket of differentiated goods. The consumption of the numeraire good is given by  $q_0$ .  $\alpha$  is a preference parameter with  $0 < \alpha < 1$ . The demand for one particular variety is:

$$q(\omega) = \frac{p(\omega)^{-\sigma}}{P^{-\sigma}} Q, \quad (3)$$

where  $p(\omega)$  is the price of variety  $\omega$ . The aggregate price index of the differentiated goods sector is  $P = \int_0^{r_h} (p(r)^{1-\sigma} dF(r))^{\frac{1}{1-\sigma}}$ , which is the price aggregator over the distribution of firms  $F(r)$ , whose support is  $[0, r_h]$  and  $Q = \frac{\alpha}{P}$ . Firms are heterogeneous in their level of risk,  $r$ , which denotes their probability of default and which is distributed according to  $F(r) = (\frac{r}{r_h})^\gamma$ .

---

<sup>19</sup>It is possible to include in the model banks operating in the large country. However, to the extent that banks are subject to regulatory requirements, they would be offering less competitive lending conditions compared to unregulated global funds. The latter can also access savings world-wide. In equilibrium, multinationals will only seek funds from the global funds located in off-shore places and banks of the large country would specialize in serving local domestic businesses.

### 6.1.2 Production of each Variety

To produce varieties each entrepreneur  $r$  has to invest in intermediate inputs. Within the firm, there are several units that assemble the intermediate inputs. The units have a productivity  $\theta_p$ , which is distributed according to  $g(\theta_p) = a\zeta(\theta_p)^{-(\zeta+1)}$  with  $a > 0$  and  $\zeta > 0$ . Each unit of intermediate input has a price  $R_p$  and each unit of the firm transforms one unit of intermediate input into  $\theta_p$  units of the final good variety. Only units for which  $\theta_p > R_p$  will operate. Hence, given an aggregate supply of intermediate inputs,  $x_p$ , we have that:

$$\int_{R_p}^{\infty} g(\theta_p) = a(R_p)^{-\zeta} = x_p, \quad (4)$$

which implies:

$$R_p = R(x_p) = \left(\frac{x_p}{a}\right)^{-\frac{1}{\zeta}}. \quad (5)$$

Investment is funded through loans whose returns are derived from the contractual agreement described in the next section. Given the return on debt,  $R_b$ , the mass of firms that operate is obtained by the condition  $R_b = R(x_p)$ . To solve the model, we will use the market clearing condition between the aggregate demand for investment and the aggregate supply of savings.

## 6.2 Firms' Pricing Decision

In the homogeneous good sector, firms produce with a constant returns to scale technology and earn zero profits. In the differentiated good sector, firms produce different varieties under monopolistic competition, funding production with debt. Firms are heterogeneous in their riskiness or probability of default,  $r$ , which determines the loan rate they pay, according to the contractual agreement derived in the next section. The probability of default implies that firms' revenues are stochastic:

$$\tilde{R} = \begin{cases} R & \text{with probability } 1 - r + m \\ 0 & \text{with probability } r - m \end{cases} \quad (6)$$

where  $R > 0$  are firms' revenues,  $r \in (0, 1)$  which is distributed according to the density  $F(r)$ , and  $m \in [0, p]$  is the bank's monitoring intensity. Monitoring reduces the default probability,

but, as we discuss later, it entails a convex cost for the lender.<sup>20</sup> Firms' costs of loans,  $R_b(r)$ , are heterogeneous and depend upon the firm's default probability. The exact relation is derived within the contractual agreement solved in the next section. Under monopolistic competition, firms optimally charge a constant mark-up over marginal cost:

$$p(r) = \frac{\sigma}{\sigma - 1} R_b(r) \quad (7)$$

Firms profits are given by expected revenues,  $(1 - r + m)p(r)q(r)$ , minus the cost of debt:

$$\pi(r) = (1 - r + m)p(r)q(r) - R_b(r) \quad (8)$$

Post-tax profits are given by  $\pi^E(r) = (1 - t)\pi(r)$ . The marginal tax rate will depend upon the location of a firm's profits, which is determined endogenously further below.

### 6.2.1 Debt Rate and Firms' Risk - The Contractual Agreement

Firms are funded by an intermediary that raises funds globally. There is a large set of risk-neutral investors and a representative risk-neutral intermediary. The latter does not necessarily represent traditional banks, but can also be thought of as a mutual fund that sells credit in the market. The intermediary extends debt to firms, but in turn, needs to raise funds from foreign investors, which are characterized by an infinitely elastic supply of funds at an expected safe return equal to  $R_S$ . Intermediary monitoring entails a convex cost,  $c(m)$ .

The firms' debt rate,  $R_b$ , is determined within an optimal contract between the intermediary and the firm on one side and the intermediary and the outside investors on the other. For this, we follow Martinez-Miera and Repullo (2017). In the optimal contract, intermediaries choose the monitoring intensity,  $m$ , as well as the rate to offer to investors to maximize the expected profit, net of returns to investors,  $R_I$ , given intermediaries' incentive

---

<sup>20</sup>Results can be easily generalized to convex cost functions.

compatibility constraint and the participation constraints of intermediaries and investors. Therefore the optimal contract reads as follows:

$$\max_{\{R^h, m\}} [(1 - r + m)(R_b - R_I) - c(m)] \quad (9)$$

subject to the intermediaries' incentive compatibility constraint:

$$m^* = \arg \max_m \{[(1 - r + m)(R_b - R_I) - c(m)]\}, \quad (10)$$

the intermediaries' participation constraint:

$$(1 - r + m^*)(R_b - R_I) - c(m) \geq 0 \quad (11)$$

and a depositor's participation constraint:

$$(1 - r + m^*)R_I \geq R^S \quad (12)$$

The incentive compatibility constraint (10) characterizes the intermediary's choice of monitoring  $m^*$ , given the rate on the intermediary's external funds,  $R_I$ , and the loan rate,  $R_b$ . The participation constraints (11) and (12) ensure that the intermediary makes profits in excess of the market outside option, and net of the monitoring cost, and that depositors get the required expected return on their investment. The contract can be solved sequentially and by backward induction. First, intermediaries choose the monitoring intensity. An interior solution to the contract is given by:

$$(R_b - R_I) - c'(m) = 0 \quad (13)$$

Given the return on deposits that satisfies depositors' participation constraint:

$$R_I = \frac{R^S}{(1 - r + m^*)} \quad (14)$$

we can re-write the intermediaries' first-order condition on the monitoring intensity as follows:

$$R_b = \frac{R^S}{(1-r+m^*)} + c'(m) \quad (15)$$

The latter allows us to determine the firms' loan rate, which will vary according to their type,  $r$ . To determine the loan rate we also assume contestability. By the latter, an intermediary lending to entrepreneurs of type  $p = 0$  sets a rate equal to the safe return,  $R_S$ , since at a lower rate it will make negative profits and at a higher rate it will be undercut by another intermediary. Similarly, for all other firms the loan rate will be set at the minimum given by equation (15). The convexity of the monitoring cost function implies that a corner solution with zero monitoring materializes when  $c''(m) - \frac{R_S}{(1-r)^2} \geq 0$ . The latter condition also determines a cut-off:

$$\hat{r} = 1 - \sqrt{\frac{R_S}{c''(m)}} \quad (16)$$

below which firms are so safe that the intermediary does not monitor them. Above the cut-off firms are monitored according to their probability of default.

### 6.2.2 Size of Operating Firms and Endogenous Internationalization

Firms which become a multinational face an entry cost,  $\varkappa$ . Whether the firm will internationalize depends upon the tax saving and its level of profits. Let us define the 'profit shifting cutoff cost level' as the cost level  $r^*$ , for which a firm is indifferent between paying taxes at home and paying taxes in the tax haven. The cut-off is determined by the following condition:

$$(1 - t_i^F) [(1 - r + m)p(r)q(r) - R_b(r)q(r)] = (1 - t_i^H) [(1 - r + m)p(r)q(r) - R_b(r)q(r)] - \varkappa \quad (17)$$

The above equation should lead to:

$$(1 - t_i^F) \left[ (1 - r + m) \left( \frac{\sigma}{\sigma - 1} - 1 \right) R_b(r) \right] = (1 - t_i^H) \left[ (1 - r + m) \left( \frac{\sigma}{\sigma - 1} - 1 \right) R_b(r) \right] - \varkappa \quad (18)$$

When substituting the expression for  $R_b = \frac{R^S}{(1-r+m^*)} + c'(m)$ , one can recover the threshold of the firm that is indifferent between opening an affiliate in the THFC or not. A fall in the debt rate reduces that threshold and thus increases the mass of firms that open an affiliate in the THFC.

### 6.2.3 A Raise in Global Savings

Global demand and supply of debt clears to satisfy the following market clearing condition:

$$F(R_S^*) = \int_0^1 R^{-1}(R_p^*) dr = w, \quad (19)$$

where  $w$  is the exogenous amount of worldwide wealth and where  $x_p = R^{-1}(R_p^*)$  is the inverse of  $R(x_p) = R_p^*$ . Since  $R'(x_p) < 0$  and since  $R_p^*$  is decreasing in  $R_S^*$  we have:

$$\frac{dR_S}{dw} = \frac{1}{F'(R_S^*)} < 0 \quad (20)$$

Hence, an increase in the supply of global savings leads to an increase in investment (visible from  $x_p = R^{-1}(R_p^*)$ ) and a fall in the loan rate per equation  $R_b = \frac{R^S}{(1-r+m^*)} + c'(m)$ . A fall in the cost of the loan increases the mass of firms that become multinationals as per equation (18). It also leads to an increase in the number of firms that are not monitored, as per equation  $\hat{r} = 1 - \sqrt{\frac{R_S}{c''(m)}}$ . Finally, a fall in the safe rate leads to a decrease in the monitoring intensity as per equation  $c''(m) - \frac{R_S}{(1-r)^2} \geq 0$ . The joint increase of non-monitored firms and the fall in monitoring intensity leads to an increase in risk. Overall, a saving glut increases the mass of multinationals and contemporaneously increase global risk.

The economic channels outlined in the model can rationalize the facts found in the data related to the joint occurrence of an increase in off-shore flows and an increase in securities' risk. An increase in global liquidity intermediated through mutual funds resident in tax havens induces firms to create an affiliate in a THFC. The increase in liquidity raises firms' profits for two reasons. First, it directly lowers loan spreads due to increased liquidity supply. Second, it lowers firms' tax bills due to increased profit shifting. The ensuing boost in profits induces global intermediaries to economize on monitoring. This in turn results in an ex post



increase of firms' default risk.

## 7 Conclusions

The U.S. global imbalances are still a fundamental fact in international finance. Their growth is even more puzzling in light of the 2007-2008 financial crisis. Using confidential and highly accurate data from U.S. residents and foreign residents holdings of U.S. dollar-denominated assets, we uncover a set of new facts, which we can summarize as follows.

Private holdings (inflows and outflows) are mainly intermediated through tax havens/ financial centers, have increased at around 2010, namely the year of the Dodd-Frank Act, and are largely intermediated by unregulated mutual funds. Furthermore, assets intermediated through tax havens are riskier and pay higher Sharpe ratios. These assets are mainly linked to firms operating in intangible-intensive sectors. The remaining bulk of the flows is represented by holdings of the official sector. The latter invested mainly in safe assets, such as treasuries, and its holdings grew at around 2012, in correspondence with the world-wide expansion of liquidity associated with quantitative easing policies.

We rationalize the connection between the growing flows of private holdings toward tax havens and the higher risk of these assets in a model which combines endogenous firms' entry into tax havens and endogenous monitoring intensity by global intermediaries. We introduce firms' heterogeneity at the level of firms' default probabilities, hence their riskiness. In the model, an increase in global savings, by reducing the cost of debt and raising firms profits, induces more of them to enter tax havens. Contemporaneously, more profitable firms appear elusively safe and this induces global intermediaries to reduce their monitoring intensity, a decision which ex post raises firms' default probability.

## References

- Alam, Zohair, Mr Adrian Alter, Jesse Eiseman, Mr RG Gelos, Mr Heedon Kang, Mr Machiko Narita, Erlend Nier, and Naixi Wang, *Digging Deeper—Evidence on the Effects of Macroprudential Policies from a New Database*, International Monetary Fund, 2019.
- Alfaro, Laura and Fabio Kanczuk, “Optimal reserve management and sovereign debt,” *Journal of International Economics*, 2009, 77 (1), 23–36.
- , Sebnem Kalemli-Ozcan, and Vadym Volosovych, “Sovereigns, upstream capital flows, and global imbalances,” *Journal of the European Economic Association*, 2014, 12 (5), 1240–1284.
- Antràs, Pol, Mihir A Desai, and C Fritz Foley, “Multinational firms, FDI flows, and imperfect capital markets,” *The Quarterly Journal of Economics*, 2009, 124 (3), 1171–1219.
- Avdjiev, Stefan, Mary Everett, Philip R Lane, and Hyun Song Shin, “Tracking the international footprints of global firms,” *BIS Quarterly Review*, 2018.
- , Wenxin Du, Catherine Koch, and Hyun Song Shin, “The dollar, bank leverage and the deviation from covered interest parity,” *American Economic Review: Insights*, Forthcoming.
- Bertaut, Carol and Ruth Judson, “Estimating U.S. Cross-Border Securities Positions: New Data and New Methods,” *Federal Reserve Board International Finance Discussion Paper*, 2014, (1113).
- , Beau Bressler, Stephanie E Curcuru et al., “Globalization and the geography of capital flows,” *FEDS Notes*, 2019.
- Bertaut, Carol C. and Ralph W. Tryon, “Monthly estimates of US cross-border securities positions,” *FRB International Finance Discussion Paper*, 2007, (910).
- Board, Federal Reserve, “The Federal Reserve in the International Sphere,” in “The Federal Reserve System: Purposes & Functions, a publication of the Board of Governors of the Federal Reserve System,” 9 ed., Wiley, June 2005.
- Bruno, Valentina, Se-Jik Kim, and Hyun Shin, “Exchange rates and the working capital channel of trade fluctuations,” in “AEA Papers and Proceedings,” Vol. 108 2018, pp. 531–36.
- Caballero, Ricardo J, Emmanuel Farhi, and Pierre-Olivier Gourinchas, “An equilibrium model of” global imbalances” and low interest rates,” *American economic review*, 2008, 98 (1), 358–93.
- Cai, Fang; Brandner Erika; and Ruth Judson, “Improving the Measurement of Cross-Border Securities Holdings: The Treasury International Capital SLT,” *Federal Reserve Bulletin*, 2012.

- Cerutti, Eugenio, Ricardo Correa, Elisabetta Fiorentino, and Esther Segallad**, “Changes in Prudential Policy Instruments—A New Cross-Country Database,” *International Journal of Central Banking*, 2017.
- Chen, Huaizhi, Lauren Cohen, and Umit Gurun**, “Don’t Take Their Word For It: The Misclassification of Bond Mutual Funds,” Technical Report, National Bureau of Economic Research 2019.
- Coppola, Antonio, Matteo Maggiori, Brent Neiman, and Jesse Schreger**, “Redrawing the Map of Global Capital Flows: The Role of Cross-Border Financing and Tax Havens,” Technical Report 2019.
- Curcuru, Stephanie E, Tomas Dvorak, and Francis E Warnock**, “Cross-border returns differentials,” *The Quarterly Journal of Economics*, 2008, *123* (4), 1495–1530.
- Desai, Mihir A, C Fritz Foley, and James R Hines**, “A multinational perspective on capital structure choice and internal capital markets,” *The Journal of Finance*, 2004, *59* (6), 2451–2487.
- Du, Wenxin, Joanne Im, and Jesse Schreger**, “The US Treasury Premium,” *Journal of International Economics*, 2018, *112*, 167–181.
- Forbes, Kristin J**, “Why do foreigners invest in the United States?,” *Journal of International Economics*, 2010, *80* (1), 3–21.
- Gilchrist, Simon and Egon Zakrajšek**, “Credit spreads and business cycle fluctuations,” *American Economic Review*, 2012, *102* (4), 1692–1720.
- Güvenen, Fatih, Raymond J Mataloni Jr, Dylan G Rassier, and Kim J Ruhl**, “Off-shore profit shifting and domestic productivity measurement,” Technical Report 23324, National Bureau of Economic Research 2017.
- Hines, James R**, “Tax policy and the activities of multinational corporations,” Technical Report, National Bureau of Economic Research 1996.
- Jordà, Òscar, Katharina Knoll, Dmitry Kuvshinov, Moritz Schularick, and Alan M Taylor**, “The rate of return on everything, 1870–2015,” *The Quarterly Journal of Economics*, 2019, *134* (3), 1225–1298.
- Lane, Philip R and Gian Maria Milesi-Ferretti**, “The external wealth of nations: measures of foreign assets and liabilities for industrial and developing countries,” *Journal of international Economics*, 2001, *55* (2), 263–294.
- and —, “The external wealth of nations revisited: international financial integration in the aftermath of the global financial crisis,” *IMF Economic Review*, 2018, *66* (1), 189–222.
- Lilley, Andrew, Matteo Maggiori, Brent Neiman, and Jesse Schreger**, “Exchange rate reconnect,” Technical Report, National Bureau of Economic Research 2019.

- Liu, Emily, Tim Schmidt-Eisenlohr et al.**, “Who Owns US CLO Securities,” Technical Report, Board of Governors of the Federal Reserve System (US) 2019.
- Liu, Li, Tim Schmidt-Eisenlohr, and Dongxian Guo**, “International transfer pricing and tax avoidance: Evidence from linked trade-tax statistics in the UK,” *Review of Economics and Statistics*, Forthcoming.
- Londono, Juan M. and Hao Zhou**, “Variance risk premiums and the forward premium puzzle,” *Journal of Financial Economics*, 2017, *124* (2), 415 – 440.
- Maggiori, Matteo**, “Financial intermediation, international risk sharing, and reserve currencies,” *American Economic Review*, 2017, *107* (10), 3038–71.
- , **Brent Neiman, and Jesse Schreger**, “International currencies and capital allocation,” *Journal of Political Economy*, Forthcoming.
- Martinez-Miera, David and Rafael Repullo**, “Search for yield,” *Econometrica*, 2017, *85* (2), 351–378.
- Mendoza, Enrique G, Vincenzo Quadrini, and Jose-Victor Rios-Rull**, “Financial integration, financial development, and global imbalances,” *Journal of Political economy*, 2009, *117* (3), 371–416.
- Obstfeld, Maurice**, “External adjustment,” *Review of World Economics*, 2004, *140* (4), 541.
- , “Twenty five years of global imbalances,” Technical Report 2018.
- Pierre-Olivier, Govillot-Nicolas Gourinchas and Helene Rey**, “Exorbitant privilege and exorbitant duty,” Working Paper 2011.
- Piketty, Thomas and Gabriel Zucman**, “Capital is Back: Wealth-Income Ratios in Rich Countries 1700–2010.,” *Quarterly Journal of Economics*, 2014, *129* (3), 1255–1310.
- Piketty, Tomas**, “Capital in the Twenty-First Century,” 2014.
- Tørsløv, Thomas R, Ludvig S Wier, and Gabriel Zucman**, “The missing profits of nations,” Technical Report 24701, National Bureau of Economic Research 2018.
- Wright, Thomas and Gabriel Zucman**, “The exorbitant tax privilege,” Technical Report 24983, National Bureau of Economic Research 2018.

# A Tables

Table A1. Aggregate Private Flows into the United States (Liabilities)

	Equity		Corporate Bonds		Treasuries	
	(1) One Variable at a Time	(2) All	(3) One Variable at a Time	(4) All	(5) One Variable at a Time	(6) All
D Log Vix	-0.609*** (0.208)	-0.213 (0.320)	-1.188*** (0.297)	-1.064* (0.597)	0.710 (1.384)	0.679 (2.062)
D Excess BP	-0.302* (0.164)	0.0621 (0.190)	-0.479 (0.411)	-0.108 (0.558)	-0.0255 (1.092)	-0.596 (1.144)
D Fed Funds R.	-0.436* (0.241)	-0.532** (0.253)	0.978** (0.422)	1.081** (0.426)	-2.150 (1.412)	-2.886* (1.539)
D Term Spread	0.0393 (0.182)	-0.0861 (0.202)	-0.296 (0.454)	-0.119 (0.531)	-0.338 (1.200)	-1.521 (1.393)
D Unempl. Outl.	-0.527 (0.436)	-0.0791 (0.591)	0.449 (1.208)	1.187 (0.864)	2.291 (2.291)	1.753 (2.140)
D Dollar	-0.130*** (0.0292)	-0.112** (0.0440)	-0.134** (0.0601)	-0.149* (0.0795)	0.0668 (0.169)	0.175 (0.214)
D VRP US	-0.00265** (0.00110)	-0.00178* (0.000906)	-0.00287* (0.00172)	0.000254 (0.00234)	-0.000959 (0.00553)	-0.00553 (0.00639)
D Treas. Basis 3y	-0.00871* (0.00484)	0.0100 (0.00745)	-0.00931 (0.0182)	0.0240 (0.0200)	0.0311 (0.0379)	0.0203 (0.0485)
D EMBI	-0.00403*** (0.00141)	-0.00279 (0.00237)	-0.00599*** (0.00227)	-0.00219 (0.00492)	0.00486 (0.00695)	-0.000475 (0.00990)
D Oil Price	0.00771 (0.00558)	-0.0134 (0.00836)	0.0107 (0.0155)	-0.0131 (0.0195)	-0.00148 (0.0426)	0.0335 (0.0507)
$N$		191		191		191
$R^2$		0.173		0.095		0.039

*Notes:* This table presents regression results on the aggregate flows into U.S. assets from abroad on monthly changes in a set of macro controls. The dependent variable is the ratio of foreign private purchases of a type of U.S. asset over the previous month's holdings of that asset by foreign private investors. Excess BP is the Excess Bond Premium. Fed Funds R. is the Federal Funds rate or the Wu-Xia shadow rate during the zero lower bound period. VRP US is the variance risk premium as in Londono and Zhou (2017). The treasury basis is from Du et al. (2018). EMBI is the EMBI spread. The sample runs at a monthly frequency from 2002 to 2018. See the data appendix for details. Robust standard errors are shown in parentheses. Key: \*\*\* significant at 1%; \*\* 5%; \* 10%.

Table A2. Aggregate Official flows into the United States (Liabilities)

	Equity		Corporate Bonds		Treasuries	
	(1) One Variable at a Time	(2) All	(3) One Variable at a Time	(4) All	(5) One Variable at a Time	(6) All
D Log Vix	-0.672 (0.474)	0.000555 (0.736)	-0.710 (0.582)	-0.854 (1.178)	-0.961** (0.387)	-0.512 (0.649)
D Excess BP	-0.418 (0.328)	-0.0954 (0.378)	-0.0864 (0.547)	0.255 (0.742)	-0.408 (0.292)	0.0860 (0.363)
D Fed Funds R.	-2.076*** (0.604)	-2.163*** (0.646)	1.214* (0.633)	1.249 (0.831)	-0.380 (0.468)	-0.181 (0.486)
D Term Spread	0.445 (0.483)	0.00748 (0.478)	-0.832 (0.737)	-0.755 (0.924)	0.323 (0.404)	0.337 (0.502)
D Unempl. Outl.	-1.533* (0.929)	-0.993 (1.097)	1.548 (1.401)	1.992 (1.509)	-1.284*** (0.498)	-0.566 (0.649)
D Dollar	-0.218*** (0.0675)	-0.138 (0.104)	-0.0959 (0.104)	-0.123 (0.164)	-0.230*** (0.0606)	-0.202** (0.0895)
D VRP US	-0.00228 (0.00214)	-0.00195 (0.00176)	-0.000975 (0.00221)	0.00151 (0.00245)	-0.00301** (0.00138)	-0.000600 (0.00202)
D Treas. Basis 3y	-0.0183 (0.0158)	-0.00706 (0.0262)	0.00414 (0.0163)	0.0388 (0.0294)	-0.0214* (0.0122)	0.00518 (0.0171)
D EMBI	-0.00384 (0.00247)	0.000419 (0.00437)	-0.00482 (0.00386)	-0.00604 (0.00896)	-0.00624*** (0.00230)	-0.000354 (0.00349)
D Oil Price	0.0280** (0.0142)	0.00840 (0.0192)	0.00213 (0.0208)	-0.00767 (0.0345)	0.0302** (0.0136)	0.000716 (0.0183)
<i>N</i>		191		191		191
<i>R</i> <sup>2</sup>		0.130		0.042		0.087

*Notes:* This table presents regression results on the aggregate flows into U.S. assets from abroad on monthly changes in a set of macro controls. The dependent variable is the ratio of foreign official purchases of a type of U.S. asset over the previous month's holdings of that asset by foreign official investors. Excess BP is the Excess Bond Premium. Fed Funds R. is the Federal Funds rate or the Wu-Xia shadow rate during the zero lower bound period. VRP US is the variance risk premium as in Londono and Zhou (2017). The treasury basis is from Du et al. (2018). EMBI is the EMBI spread. The sample runs at a monthly frequency from 2002 to 2018. See the data appendix for details. Robust standard errors are shown in parentheses. Key: \*\*\* significant at 1%; \*\* 5%; \* 10%.

Table A3. Aggregate Flows from the United States (Claims)

	Equity		Long Term Debt	
	(1) One Variable at a Time	(2) All	(3) One Variable at a Time	(4) All
D Log Vix	-0.535*** (0.160)	-0.0727 (0.198)	-0.551 (0.530)	0.933 (0.797)
D Excess BP	-0.338* (0.173)	-0.0986 (0.201)	-0.374 (0.316)	0.422 (0.282)
D Fed Funds R.	0.238 (0.206)	0.164 (0.150)	0.637 (0.479)	0.394 (0.429)
D Term Spread	-0.0178 (0.159)	-0.0514 (0.144)	-0.354 (0.484)	-0.377 (0.434)
D Unempl. Outl.	-0.549 (0.371)	-0.179 (0.256)	-1.216* (0.622)	0.122 (0.751)
D Dollar	-0.0756*** (0.0290)	-0.0329 (0.0378)	-0.301*** (0.0510)	-0.189*** (0.0668)
D VRP US	-0.00268*** (0.000580)	-0.00175** (0.000740)	-0.00323 (0.00214)	-0.000439 (0.00175)
D Treas. Basis 3y	-0.0109 (0.00721)	0.00779 (0.00686)	-0.0369*** (0.0137)	0.00509 (0.0200)
D EMBI	-0.00390*** (0.000753)	-0.00209 (0.00165)	-0.00975*** (0.00212)	-0.00868** (0.00428)
D Oil Price	0.0102 (0.00686)	-0.0000706 (0.00683)	0.0585*** (0.0157)	0.0309* (0.0182)
<i>N</i>		191		191
<i>R</i> <sup>2</sup>		0.147		0.207

*Notes:* This table presents regression results on the aggregate investment flows from U.S. residents into foreign assets on monthly changes in a set of macro controls. The dependent variable is the ratio of U.S. residents' purchases of a type of foreign asset over the previous month's holdings of that type of asset by U.S. residents. Excess BP is the Excess Bond Premium. Fed Funds R. is the Federal Funds rate or the Wu-Xia shadow rate during the zero lower bound period. VRP US is the variance risk premium as in Londono and Zhou (2017). The treasury basis is from Du et al. (2018). EMBI is the EMBI spread. The sample runs at a monthly frequency from 2003 to 2018. See the data appendix for details. Robust standard errors are shown in parentheses. Key: \*\*\* significant at 1%; \*\* 5%; \* 10%.

Table A4. Country-level Private Flows into the United States (Liabilities)

	Equity		Corporate Bonds		Treasuries	
	(1) One Variable at a Time	(2) All	(3) One Variable at a Time	(4) All	(5) One Variable at a Time	(6) All
Macro Prudential (Cerutti)	-0.778 (0.881)	0.316 (1.020)	1.638 (1.036)	0.516 (1.329)	-0.883 (3.857)	-0.730 (6.386)
Regulation (iMaPP)	-0.623*** (0.199)	-0.719*** (0.251)	0.686 (0.436)	0.556 (0.537)	-0.236 (0.724)	0.0376 (1.154)
LTV (iMaPP)	0.00547 (0.0126)	-0.0134 (0.0142)	-0.00543 (0.0137)	0.0100 (0.0142)	0.0165 (0.0429)	0.0273 (0.0571)
D Corporate Tax Rate	-0.303** (0.132)	-0.278** (0.122)	0.311* (0.180)	0.171 (0.197)	0.0986 (0.286)	0.500 (0.504)
<i>N</i>		219		220		219
<i>R</i> <sup>2</sup>		0.080		0.025		0.011

*Notes:* This table presents regression results on country-level flows into U.S. assets from abroad on a set of variables capturing regulation and taxation. The dependent variable is the ratio of foreign private purchases of a type of U.S. asset over the previous year's holdings of that asset by foreign private investors. Macro Prudential is a variable capturing prudential regulation constructed in Cerutti et al. (2017). Regulation is the cumulative sum of regulation changes and LTV is the average loan-to-value limit, both from iMaPP (Alam et al. (2019)). Corporate tax rate is the statutory corporate tax rate from KPMG. The sample runs at an annual frequency from 2012 to 2019. See the data appendix for details. Robust standard errors are shown in parentheses. Key: \*\*\* significant at 1%; \*\* 5%; \* 10%.

Table A5. Country-level Official Flows into the United States (Liabilities)

	Equity		Corporate Bonds		Treasuries	
	(1) One Variable at a Time	(2) All	(3) One Variable at a Time	(4) All	(5) One Variable at a Time	(6) All
Macro Prudential (Cerutti)	-2.393* (1.381)	-3.502 (2.492)	-1.396 (1.399)	1.618 (2.481)	-0.444 (1.689)	-1.908 (1.972)
Regulation (iMaPP)	-0.236 (0.213)	0.0690 (0.353)	-0.499* (0.277)	-0.751 (0.503)	-0.304*** (0.103)	0.0696 (0.291)
LTV (iMaPP)	0.0117 (0.0170)	0.0112 (0.0212)	0.00967 (0.0229)	-0.0240 (0.0325)	0.0257** (0.0115)	0.0311 (0.0257)
D Corporate Tax Rate	0.156 (0.269)	0.225 (0.237)	-0.190 (0.349)	-0.585** (0.288)	0.0458 (0.147)	0.518*** (0.198)
<i>N</i>		185		196		217
<i>R</i> <sup>2</sup>		0.043		0.033		0.072

*Notes:* This table presents regression results on country-level flows into U.S. assets from abroad on a set of variables capturing regulation and taxation. The dependent variable is the ratio of foreign official purchases of a type of U.S. asset over the previous year's holdings of that asset by foreign official investors. Macro Prudential is a variable capturing prudential regulation constructed in Cerutti et al. (2017). Regulation is the cumulative sum of regulation changes and LTV is the average loan-to-value limit, both from iMaPP (Alam et al. (2019)). Corporate tax rate is the statutory corporate tax rate from KPMG. The sample runs at an annual frequency from 2012 to 2019. See the data appendix for details. Robust standard errors are shown in parentheses. Key: \*\*\* significant at 1%; \*\* 5%; \* 10%.

Table A6. Tax Rates, Asset Intangibility and U.S. Capital Inflows (U.S. Liabilities)

	(1)	(2)	(3)	(4)	(5)	(6)
	Bonds	Equity	Bonds	Equity	Bonds	Equity
Tax Rate	0.00850 (0.00942)	0.00201 (0.00521)	0.00946 (0.00946)	0.00350 (0.00581)		
Tax Rate X 1st Quart. Intang.			0.00139 (0.00221)	-0.0151*** (0.00267)	0.00214 (0.00218)	-0.0155*** (0.00260)
Year FE	Yes	Yes	Yes	Yes	No	No
Industry FE	Yes	Yes	Yes	Yes	No	No
Country FE	Yes	Yes	Yes	Yes	No	No
Country-Year FE	No	No	No	No	Yes	Yes
Ind.-Year FE	No	No	No	No	Yes	Yes
Observations	9703	12352	8593	11371	8568	11368
<i>R</i> <sup>2</sup>	0.906	0.916	0.921	0.923	0.942	0.934

*Notes:* This table presents regression results on country-industry level holdings of U.S. assets by foreign private investors on the source country tax rate. The dependent variable is the stock of U.S. corporate bonds and equity held by foreign private investors. Corporate tax rate is the statutory corporate tax rate from KPMG. 1st Quart. Intang. is a dummy variable that takes the value 1 if an industry is in the top quartile in terms of asset intangibility. The sample runs at an annual frequency from 2015 to 2019. Standard errors clustered at the country-year level are shown in parentheses. Key: \*\*\* significant at 1%; \*\* 5%; \* 10%.



## **B The Treasury International Capital (TIC) Reporting System**

### **B.1 Overview**

The TIC (Treasury International Capital) system collects data on cross-border banking and securities positions and flows. These data form the basis for U.S. official balance of payments and international investment position data on portfolio investment, and are also used in the Federal Reserve’s Financial Accounts (Z.1 release) data on rest-of-world portfolio positions and flows. Reporting is legally mandated.

For securities positions and flows, the primary TIC forms are: the TIC S, which has collected data monthly on gross and net long-term securities transactions by instrument and counterparty since the late 1970s; the annual TIC surveys, which have collected data on individual securities since the early 2000s; the TIC SLT, which has collected monthly aggregate data on long-term securities positions by instrument and counterparty since late 2011; and the TIC BL-2, which has collected—along with custodial banking data—holdings of short-term securities by instrument and counterparty monthly since the late 1970s.

Responsibility for the TIC system is shared by the U.S. Treasury, the Federal Reserve Bank of New York, and the Federal Reserve Board of Governors. The Treasury oversees the TIC system and publishes a wide variety of tables and reports. The Federal Reserve Bank of New York is responsible for the primary collection and review of the data, and the Federal Reserve Board of Governors is responsible for additional data review, data adjustments, and production and dissemination of TIC tables and reports. Board of Governors staff with direct responsibility for TIC production have access to much more detailed breakdowns of the data than are available in the published data, and much of the data used in this paper relies on these unpublished breakdowns.

### **B.2 TIC Annual Surveys**

TIC annual surveys collect security-level data on U.S. residents’ debt and equity claims against foreign residents (that is, foreign securities held by U.S. residents) and on U.S. debt

and equity liabilities to foreign residents (that is, U.S. securities held by foreign residents). Liabilities surveys are conducted each year as of end-June and claims surveys are conducted each year as of end-December. Data are collected from U.S. -resident custodians, issuers, and end-investors, and reporting is mandated by law.

TIC benchmark surveys are conducted every five years (most recently in 2016 for claims and in 2019 for liabilities); in other years, the reporting panels are limited to the largest reporters and typically capture 98% or more of the benchmark reporting. The findings of these surveys are typically published ten months after each reporting date.<sup>21</sup>.

### **B.3 TIC Monthly Securities Holdings Data**

The TIC-SLT, the newest form, was introduced in late 2011 to improve timeliness and frequency of securities holdings data. While in principle it should be possible to estimate positions based on holdings in the prior period, reported transactions from the TIC-S, and estimated price changes, experience had shown that this approach applied to annual TIC survey data rarely produced position information that corresponded to the findings of the following annual TIC survey. As a result, reliable data on securities holdings were available only at a low frequency and with very long lags. In addition to providing much more timely data on securities positions, the TIC SLT allows for estimation of flows based on the change in TIC-SLT position, estimated valuation change, and any other changes. In the context of this paper, it should be noted that the introduction of the TIC SLT included a great deal of outreach to managed funds, and resulted in an increase in TIC reporting for these firms, many of which are domiciled in the Cayman Islands. As a result, increases in Cayman Islands positions between the 2011 and 2012 annual surveys include some effects from this increase in reporting.

### **B.4 Estimating securities flows from position data**

As noted above, combining TIC S data with annual survey positions and estimated price changes in order to estimate positions for the following survey rarely produce figures that

---

<sup>21</sup>TIC annual securities reports and the data collection forms are available at the Treasury's TIC website: <https://www.treasury.gov/resource-center/data-chart-center/tic/Pages/fpis.aspx>

match the following year’s survey. As a result, Bertaut and Tryon (2007) developed a method for estimating intra-year positions. Another option for estimating flows is then to calculate flows as [change in estimated position] less price change. We use these flow estimates, and their analogues based on monthly SLT data in this paper.

## **B.5 Public and Confidential Data**

As noted above, compilers of the TIC data at the Federal Reserve Board have access to more detailed breakdowns of the data than are published, and many of the calculations shown here use these confidential breakdowns. For the aggregate data, most notably we are able to separate securities liabilities (foreign holdings of U.S. securities) by country and also by type of holder—foreign official or foreign private. On the claims side, we are able to break bond positions and flows down by country and also by type of issuer—again foreign official or foreign private (nearly always corporate).

## **B.6 Direct Investment**

The TIC data do not include direct investment. The Bureau of Economic Analysis, part of the Department of Commerce, conducts a direct investment survey.

## **C Other Data Sources**

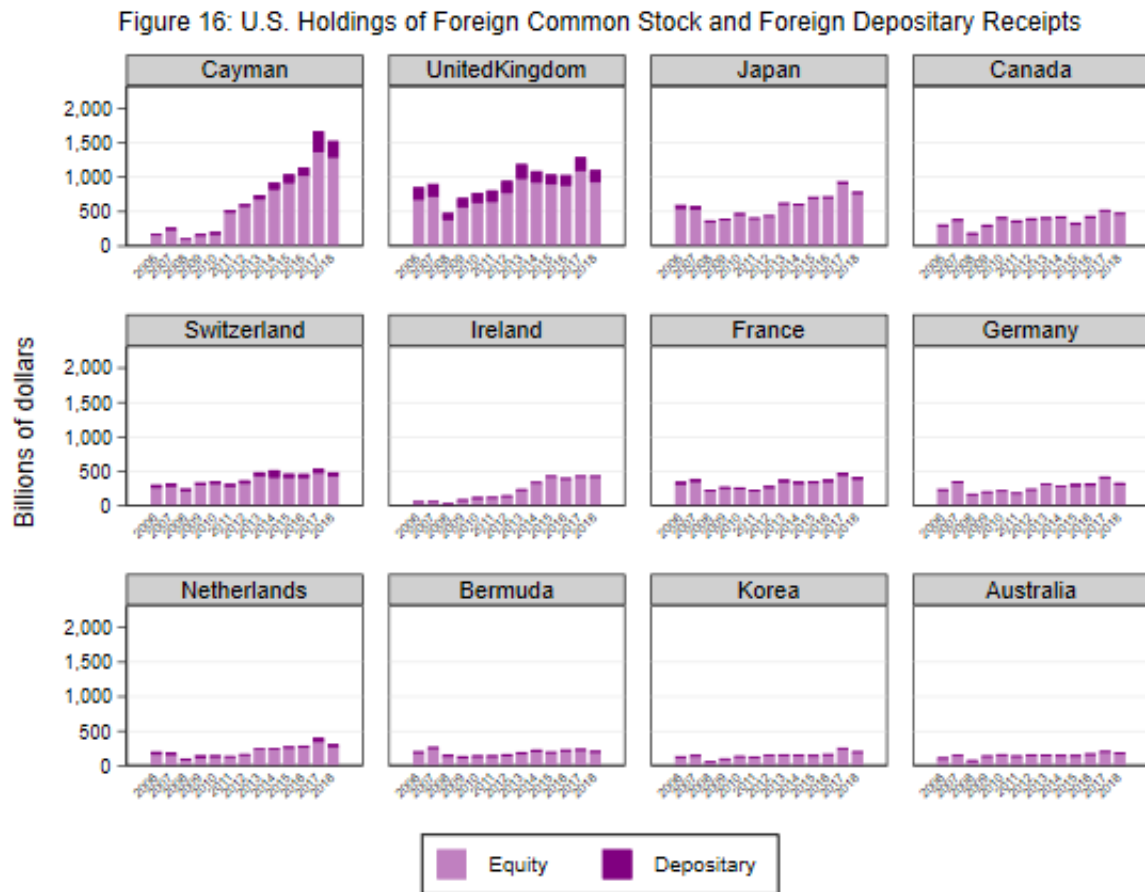
- Survey of Professional Forecasters: Information on expected unemployment rates, real GDP growth, short-term and long-term interest rates as the means of the 4-quarter ahead forecast values.
- Broad dollar index, EME and AFE dollar index: Trade-weighted dollar indices computed and published by the Federal Reserve.
- Standard macro and financial variables: Monthly values from Bloomberg and Haver.
- Excess bond premium: Downloaded from the Federal Reserve’s website: <https://www.federalreserve.gov/econresdata/notes/feds-notes/2016/updating-the-recession-risk-and->

the-excess-bond-premium-20161006.html.

- Convenience yields provided by Wenxin Du: <https://sites.google.com/site/wenxindu/data/govt-cip> and Du et al. (2018).
- Variance risk premium provided by Juan-Miguel Londono used in Londono and Zhou (2017).
- World recession probability provided by Pablo-Cuba Borda: <https://www.federalreserve.gov/econres/notes/ifdp-notes/monitoring-the-world-economy-a-global-conditions-index-20180615.htm>.

## D Additional Figures

Figure D.1. U.S. Holdings of Foreign Common Stock Foreign Depository Receipts



Source: TIC SHC

Figure D.2. Total Foreign Holdings of U.S. Securities

