

NBER WORKING PAPER SERIES

THE DECLINING LABOR MARKET PROSPECTS OF LESS-EDUCATED MEN

Ariel J. Binder  
John Bound

Working Paper 25577  
<http://www.nber.org/papers/w25577>

NATIONAL BUREAU OF ECONOMIC RESEARCH  
1050 Massachusetts Avenue  
Cambridge, MA 02138  
February 2019

We thank Charlie Brown, Gordon Hanson, Enrico Moretti, Mel Stephens, and Tim Taylor for helpful comments. Binder acknowledges research support from an NICHD training grant to the Population Studies Center at the University of Michigan (T32 HD007339). Tyler Radler provided excellent research assistance. Errors and opinions are our own. The views expressed herein are those of the authors and do not necessarily reflect the views of the National Bureau of Economic Research.

NBER working papers are circulated for discussion and comment purposes. They have not been peer-reviewed or been subject to the review by the NBER Board of Directors that accompanies official NBER publications.

© 2019 by Ariel J. Binder and John Bound. All rights reserved. Short sections of text, not to exceed two paragraphs, may be quoted without explicit permission provided that full credit, including © notice, is given to the source.

The Declining Labor Market Prospects of Less-Educated Men  
Ariel J. Binder and John Bound  
NBER Working Paper No. 25577  
February 2019  
JEL No. E24,J12,J21,J22,J23,J31

### **ABSTRACT**

Over the last half century, U.S. wage growth stagnated, wage inequality rose, and the labor-force participation rate of prime-age men steadily declined. In this article, we examine these labor market trends, focusing on outcomes for males without a college education. Though wages and participation have fallen in tandem for this population, we argue that the canonical neo-classical framework, which postulates a labor demand curve shifting inward across a stable labor supply curve, does not reasonably explain the data. Alternatives we discuss include adjustment frictions associated with labor demand shocks and effects of the changing marriage market—that is, the fact that fewer less-educated men are forming their own stable families—on male labor supply incentives.

Our observations lead us to be skeptical of attempts to attribute the secular decline in male labor-force participation to a series of separately-acting causal factors. We argue that the correct interpretation probably involves complicated feedback between falling labor demand and other factors which have disproportionately affected men without a college education.

Ariel J. Binder  
Department of Economics  
University of Michigan  
Ann Arbor, MI 48109  
USA  
ajbinder@umich.edu

John Bound  
Department of Economics  
University of Michigan  
Ann Arbor, MI 48109-1220  
and NBER  
jbound@umich.edu

A data appendix is available at <http://www.nber.org/data-appendix/w25577>

During the last 50 years, labor market outcomes for men without a college education in the United States worsened considerably. Between 1973 and 2015, real hourly earnings for the typical 25-54-year-old man with only a high school degree declined by 18.2 percent,<sup>1</sup> while real hourly earnings for college-educated men increased substantially. Over the same period, labor-force participation by men without a college education plummeted. In the late 1960s, nearly all 25-54-year-old men with only a high school degree participated in the labor force; by 2015, such men participated at a rate of 85.3 percent.

In this article, we examine secular change in the U.S. labor market since the 1960s. We have two distinct but related objectives. First, we assemble an overview of developments in the wage structure, focusing on the dramatic rise in the college wage premium. Second, we examine possible explanations for the decline in labor-force participation among less-educated men. We begin this part with a review of literature connecting declining labor market activity with declining wages in this population. While such a connection indicates a reduction in labor demand, we point out that the canonical neoclassical framework, which emphasizes a labor demand curve shifting inward across a stable labor supply curve, does not reasonably account for this development. This is because wages have not declined consistently over the sample period while labor-force participation has. Moreover, the uncompensated elasticity of labor supply necessary to align wage changes with participation changes, during periods when both were declining, is implausibly large.

We then examine two oft-discussed developments outside of the labor market: rising access to Social Security disability insurance (DI), and the growing share of less-educated men with a prison record. Rising DI program participation can account for a non-trivial share of

---

<sup>1</sup> Hourly earnings declined from \$21.40 to \$17.50. Throughout this article we adjust reported wages to 2017 prices using the Personal Consumption Expenditure deflator.

declining labor-force participation among men aged 45-54, but appears largely irrelevant to declining participation in the 25-44-year-old group. Additionally, we document that most non-participating men support themselves primarily on the income of other family members, with a distinct minority depending primarily on their own disability benefits. The literature has not progressed far enough to admit a reasonable quantification of the impact of rising exposure to prison on the labor-force participation rate, but recent estimates suggest that sizable effects are possible. We flag this as an important area for further research.

The existing literature, in our view, has not satisfactorily explained the decline in less-educated male labor-force participation. This leads us to develop a new explanation. As others have documented, family structure in the United States has changed dramatically since the 1960s, featuring a tremendous decline in the share of less-educated men forming and maintaining stable marriages. We additionally show an increase in the share of less-educated men living with their parents or other relatives. Providing for a new family plausibly incentivizes a man to engage in labor market activity: a reduction in the prospects of forming and maintaining a stable family, then, removes an important labor supply incentive. At the same time, the possibility of drawing income support from existing relatives creates a feasible labor-force exit. We suspect that changing family structure not only shifts male labor supply incentives independently of labor market conditions, but also moderates the effect of a male labor demand shock on labor-force participation. Since male earning potential is an important determinant of new marriage formation, a persistent labor demand shock which reduces male earning potential exerts an impact on male labor-force participation which operates through the marriage market.

Much prior research has addressed U.S. labor market trends over the last half century, including several recent reviews on male employment (Moffitt 2012; CEA 2016; Abraham and

Kearney 2018). Our aim is not to exhaustively review the literature, but rather to point out where we think consensus has developed and where we think important questions remain unanswered. In the synthesis that emerges, the phenomenon of declining prime-age male labor-force participation is not coherently explained by a series of separately-acting causal factors. A more reasonable interpretation, we argue, involves complex feedbacks between labor demand, family structure, and other factors which have disproportionately affected less-educated men.

## **The U.S. Wage Structure since 1970**

Prime-age men of all education levels experienced robust wage growth in the mid-1960s and early 1970s, as shown in Figure 1, which plots trends in geometric average hourly earnings by education group.<sup>2</sup> This growth ceased after 1973, with hourly earnings for all but those with advanced degrees falling for the next 20 years. After rising again for a decade starting around 1994, hourly earnings stagnated for the next decade (again, apart from those with advanced degrees). Over the last few years, hourly earnings have begun to grow again for men of all education levels. It is too early to tell whether this growth is a blip in the long-run trend or the beginning of a sustained increase. Nonetheless, for groups without a college degree, real hourly earnings were substantially lower in 2015 than they were in 1973.<sup>3</sup>

---

<sup>2</sup> We use the March supplement to the Current Population Survey throughout this paper unless otherwise specified. Following the standard definition, we consider prime-age men to be between the ages of 25 and 54. Within each education group we implement a reweighting method to hold constant the age distribution across time. We compute geometric averages by applying the exponential function to the average of log hourly earnings. An online appendix, available at [<>](#), includes details regarding data processing as well as additional figures and tables.

<sup>3</sup> The hourly earnings numbers we report represent geometric average hourly earnings for those working in the reference year. Conceptually, we might prefer the typical wage that a man might expect (including those not working). Using techniques developed by Juhn, Murphy and Topel (1991) we imputed wages for those who did not work throughout the entire reference year. Including these imputations in our calculation of wages mildly affects the trends but does not substantially alter the broad patterns across time. See Appendix Figure A1.

Substantial changes in wage dispersion are also apparent. During the 1970s, wages of college graduates fell relative to those of high school graduates; after 1980, the college wage premium increased dramatically. For example, in 1980, the average college graduate earned 1.26 times as much per hour as the average high school graduate. By 2015, this differential had widened to 1.68. The wage differential for advanced degree holders relative to high school graduates grew more sharply, from 1.41 to 2.17. Note that we are using the geometric average, which is less sensitive than the arithmetic average to outlier earners: if hourly earnings are log-normally distributed, the geometric average is the median of the distribution. Moreover, we have removed outlier earners from our calculations (see Appendix for details). Even with these adjustments to the data, we still measure a large secular increase in male wage dispersion.

A breakdown of the full sample into different demographic groups reveals similar patterns (Appendix Figure A2). For example, whites and blacks of all ages and education levels experienced strong wage growth in the mid-1960s and early 1970s. Thereafter, whites and blacks of all ages experienced substantial wage decline—especially the high school dropout populations. This was followed by robust growth for all demographic groups from 1994-2002 and then modest decline throughout the 21<sup>st</sup> century. Since the early 1990s, cumulative wage growth appears to be higher for high school dropouts than for high school graduates or those with some college education. One modest exception to these overall patterns is that secular wage fluctuations appear relatively muted for the 45-54 age group. Card and Lemieux (2001) have shown how these patterns are consistent with cohort-specific changes in relative supply, though

an alternative explanation is that older workers are more insulated from labor market change than younger workers.<sup>4</sup>

When analyzing secular change in labor market outcomes by education group, an important question is whether the underlying skill composition of education groups has remained constant over time. This may be especially relevant for the less-educated groups of interest. For example, in the late 1960s, nearly 40 percent of prime-age men had not completed high school; by the 2010s, this share had plummeted to around 10 percent. The share of prime-age men with only a high school degree has remained relatively constant over time as high school completion rates but also college participation rates have risen. It is plausible that at least a portion of observed secular declines in wages and employment among less-educated men stem from this population becoming increasingly negatively selected on labor market skills.

To assess this possibility, we compiled data from the National Longitudinal Surveys of Youth (NLSY) containing well-validated measures of cognitive and non-cognitive skills. Results and further discussion comparing the 1959-65 birth cohorts (drawn from the NLSY79) to the 1980-84 birth cohorts (drawn from the NLSY97) appear in the online appendix. Perhaps surprisingly, we document little evidence that average skill levels in the high-school-dropout and high-school-graduate populations declined between the two cohorts. Our observations are relatively consistent with the work of Altonji, Bharadwaj and Lange (2012) documenting population improvements in various skill levels between the NLSY79 and 97 cohorts.

### **Explaining Wage Dispersion**

---

<sup>4</sup> While the focus of this paper is on men, it is worth mentioning that wages for women have followed similar trends (Autor 2014), though with more overall wage growth since the late 1970s, commensurate with the narrowing of the gender wage gap (Blau and Kahn 2017).

Labor economists have drawn on the neoclassical supply-demand framework to interpret secular changes in wage dispersion. For example, the relative size of the college-educated workforce grew rapidly during the 1970s, inducing the relative wages of college graduates to fall (Freeman 1975). Since then, the relative supply of college-educated workers grew at a slower rate and their relative wages rose dramatically. These developments are consistent with an outward shift in relative demand for college-educated workers (Katz and Murphy 1992; Murphy and Welch 1992; Bound and Johnson 1992; for a longer-term perspective, Goldin and Katz 2008). Autor, Katz and Kearney (2008) attributed secular growth in the college wage premium over the 1970s-early 2000s to an outward shift in relative demand which proceeded at a constant pace until the early 1990s and then slowed somewhat.

Since 1990, a voluminous literature has analyzed potential causes of shifts in relative demand. Some initially observed that rising trade with countries with abundant supplies of less-skilled workers should put downward pressure on the relative wages of less-skilled U.S. workers (for example, Murphy and Welch 1991). Economists during the 1990s produced a range of empirical estimates of this effect, generally finding that the magnitudes were not nearly large enough to explain the entire observed decline in relative wages. According to the 1997 survey of William Cline, “a reasonable estimate...would be that the international influences [have] contributed about 20 percent of the rising wage inequality in the U.S.” Even this modest estimate was high relative to other contemporary surveys (for example, the 1995 “Symposium on Inequality and Trade” issue of this journal).

Over the last 25 years, the North American Free Trade Agreement was implemented, China joined the World Trade Organization, and the volume of trade between high and middle-income countries increased dramatically. Nonetheless, more recent studies reached the same



basic conclusion, with Katz (2008) suggesting that rising trade accounted for less than 20 percent of the increase in the college wage premium between 1980 and 2006 (see also Krugman 2008; Bivens 2007). More recently, Autor, Dorn and Hanson (2013) leveraged commuting-zone-level variation to estimate that rising import competition from China could explain roughly 25 percent of the decline in U.S. manufacturing employment between 1990 and 2007. Their estimates indicate large effects of trade on highly-exposed communities but are consistent with modest overall effects of trade on relative wages.

What explains the other 80 percent of the growth in dispersion in the U.S. wage structure? During the 1990s, a consensus arose that skill-biased technological change was a primary driver. Bound and Johnson (1992) and Katz and Murphy (1992) showed that labor reallocation across sectors could account for relatively little of the shift in the utilization of skilled labor during the 1980s. Most of the change occurred within narrowly defined sectors, suggesting a broad-based shift in demand for skilled labor unrelated to trade forces.<sup>5</sup> Berman, Bound and Grilliches (1994) and Autor, Katz and Krueger (1998) reported similar findings, while also showing that skill upgrading was most rapid within industries which invested most in computer technologies.

The “skill-based” framework succeeds in explaining the dramatic growth in wage dispersion of the 1980s. However, since the 1990s, wages of high school dropouts relative to high school graduates and those with some college have not continued to decline—if anything they have increased. Accordingly, Autor, Levy and Murnane (2002, 2003) envisioned a framework in which the production process involves several types of tasks: for example, manual,

---

<sup>5</sup> Feenstra and Hanson (1996; 1999) argued that the outsourcing of intermediate products implied that the framework used by the above authors would underestimate the role played by trade. While this point is well-taken, even after accounting for outsourcing, Feenstra and Hanson’s estimates suggested that skill-biased technological change was substantially more important than trade in explaining the rise in the relative demand for college-educated labor.

routine, and abstract. Computers substitute for labor in routine tasks but complement labor in abstract tasks, resulting in increased relative demand for labor with high cognitive skill. Autor, Katz and Kearney (2006, 2008) have also hypothesized that computers do not impact low-skill manual tasks: thus, this “task-based” framework can account for the post-1990s polarization of relative wage growth.<sup>6</sup> The task-based framework has become an enormously influential in terms of understanding which jobs are vulnerable to displacement (Acemoglu and Autor, 2011). Research following Autor, Levy and Murnane (2002, 2003) has found that routine tasks are likeliest to be moved offshore or automated (e.g. Frey and Osborne 2017) and, in general, that skill-biased technological change is fundamentally altering the nature of work (Levy and Murnane 2004; Acemoglu and Restrepo 2018).

Other factors may also have contributed to the growth in wage dispersion since 1980. Some have focused on institutional factors. For example, DiNardo, Fortin and Lemieux (1996) estimated that the decline in unionization of workers contributed close to 20 percent of the rise in the college wage premium over the 1980s, although these estimates ignore general equilibrium effects of de-unionization. While such effects in theory could cut in either direction, recent work has found positive spillover effects of unions on the wages of comparable nonunion workers (Fortin, Lemieux and Lloyd 2018). DiNardo, Fortin and Lemieux (1996) also estimated that the falling real minimum wage modestly increased the college wage premium for young men but had negligible effects for more experienced men. Subsequent research has confirmed small effects of changes in the minimum wage on the wages of low-wage workers (Lee 1999; Autor, Manning

---

<sup>6</sup> Holzer (2010) has argued that the polarization claim is oversold: while middle-skill jobs have been disappearing in some sectors, they have been stable or growing in others. A different explanation emphasizes feedback effects of the skill-based framework operating through the product market. For example, an increase in relative demand for skilled labor may raise skilled households’ demand for service-oriented products which are intensive in unskilled labor (Mazzolari and Ragusa, 2013; Murphy, 2016).

and Smith 2016). Other work has discussed the impact of the deregulation of various industries (Hirsch 1988; Rose 1987; in this journal, Fortin and Lemieux 1997).

Another factor that has received considerable attention is the assimilation of massive inflows of women and immigrant men into the U.S. labor market. As illustrated in Appendix Table A1, women and immigrant men of all education statuses and age levels have increasingly entered the U.S. labor market since 1960. However, the entry of women has been skill-biased. For example, among 35-44-year-olds, the female share of the college-educated workforce more than doubled, from 25 percent in 1960 to 51 percent in 2016. On the other hand, the female share of the high school graduate workforce increased only slightly, from 38 percent in 1960 to 41 percent in 2016. It is therefore unlikely that the entry of women into the workforce has increased the college wage premium: if anything, such a development should have exerted downward pressure.

The effect of immigration on the male wage distribution is more complicated to evaluate. Inspection of Table A1 reveals that the increase in competition from immigrant men has been modest and relatively uniform across education statuses—except for high school dropouts, where the share immigrant men increased from roughly 5 to roughly 40 percent between 1960 and 2016. The impact of this influx on native (and immigrant) labor market opportunities remains a hotly debated topic (see Card 2009; Borjas 2016; in this journal, Peri 2016). While it might seem that the large inflow of workers with less than a high school education would significantly depress high school dropouts' relative wages, there are several reasons to suspect smaller effects. First, if dropouts and high school graduates are close to perfect substitutes (as Card 2009 argued), the negative impact of this inflow will be diffused across all those with no more than a high school education. Second, if immigrants tend to specialize in certain occupations, this may

increase opportunities for workers in other occupations due to production complementarities (Peri and Sparber 2009). Third, the endogenous responses of natives to an influx of immigrants is likely to dilute the economic effects of immigration (for a fuller discussion of each of these issues, see Peri 2016). It does seem likely, however, that immigrants depress relative wages locally in occupations into which they cluster (Cortes 2008; Burstein et al. 2017).

### **Secular Stagnation**

If average wages for prime-age men had been trending upward strongly, then greater wage dispersion could have been accompanied by higher wages for all, even the less-educated. But instead, greater wage dispersion happened against a backdrop of stagnant average wage growth. As reported by the Bureau of Labor Statistics, labor productivity grew at a brisk pace of 2.8 percent per year between 1948 and 1972. Thereafter, between 1973 and 2016, productivity growth averaged only 1.4 percent per year (apart from a temporary boom from 1995 to 2004). Thus, even if real hourly earnings had kept pace with productivity, there would have been a slowdown in average wage growth. But additionally, in the last 20 years, labor's share in national income has steadily dropped (Appendix Figure A3; for explanations of this phenomenon, see Elsby et al. 2013, Karabarbounis and Neiman 2014, Autor et al. 2017), leading real hourly earnings to grow even more slowly than labor productivity. In the face of stagnant overall wage growth created by these two developments, greater wage dispersion has translated into a modest reduction in wages paid to less-skilled men.

### **The Secular Decline in Male Labor-Force Participation**

As reported by the Bureau of Labor Statistics, there has been a near-continuous decrease in the labor-force participation rate of prime-age American men, from 97.2 percent in 1960 to

88.2 percent in 2015: a cumulative decline of 9 percentage points. Considering that the population of prime-age men in 2015 was around 61.4 million, the secular decline in participation implies a cumulative loss of 5.53 million men from the prime-age workforce.<sup>7</sup>

In Figure 2 we plot the 1965-2016 evolution of the labor-force participation rate by education status, using data from the March supplement to the Current Population Survey based on individuals' reported labor-force statuses in the survey week. The solid series include all prime-age men, while the dashed series exclude foreign-born immigrants. (The CPS does not record birthplace until 1994.) This exclusion lowers measured participation for high school graduates and dramatically affects the downward trend for those without a high school diploma, reflecting increasing representation of immigrants in this segment of the population combined with their higher participation rates (Borjas 2017). The hourly earnings series presented earlier in Figure 1 are not nearly as sensitive to the exclusion of immigrants.

As in the case of earnings, we observe a dramatic rise in labor-force participation dispersion across education levels. In 1965, the difference in the participation rate between advanced degree holders and high school dropouts was 3.2 percentage points; by 2015, this difference had widened to 17.6 percentage points. Within the U.S.-born population, the difference in the participation rate between advanced degree holders and high school dropouts was a tremendous 31.5 percentage points in 2015. Clearly, most of the secular decline in prime-age male labor-force participation can be attributed to those without a college degree; we focus on this group for the remainder of the paper.

---

<sup>7</sup> Although we focus here on the labor-force participation rate, the literature has sometimes focused on the employment-to-population ratio. This statistic has also exhibited a long-run decline, but the pattern is far more cyclical (at shorter as well as slightly longer-run frequencies). Business cycle dynamics are not a focus of this paper, although it should be acknowledged that the participation rate exhibits mild cyclicity as well. This was particularly evident in the early 2000s boom (Charles, Hurst and Notowidigdo 2016), Great Recession, and subsequent recovery. At the long-run frequency of interest, cyclicity does not affect the participation rate.

Appendix Figure A4 breaks the full sample up into demographic sub-groups by race, age and education, and confirms that the same overall pattern of decline in prime-age male labor-force participation holds true within each sub-group. However, within each education status, blacks experienced larger declines than whites at all age levels. This is especially true among high school dropouts, where black participation rates tumbled by 30-40 percentage points. We also note some heterogeneity in participation trends by age: while all age groups have withdrawn from the labor force consistently over the sample period, the rate of withdrawal for young workers aged 25-34 relative to older workers increased slightly after the mid-1990s. (This is apart from high school dropouts aged 45-54, who have experienced alarmingly high rates of withdrawal from the labor-force.)

### **Is Non-Participation Temporary or Permanent?**

Does the measured labor-force participation rate reflect brief periods of non-participation experienced by a sizable share of the population, or perpetual non-participation experienced by a small share of the population? An account of how non-participation is distributed in the population provides information about the appropriate theoretical framework for examining change. For example, the canonical neoclassical labor supply framework conceives of the amount of time spent working, given an hourly wage rate, as an optimal tradeoff between income and substitution effects (Deaton and Muellbauer, 1980). This framework cannot readily shed light on the decision not to spend any time working, which represents a corner solution. However, if most men who are not participating at a given point in time will participate in the future, then the standard framework remains a useful tool to analyze (changes in) male participation behavior.

Using retrospective reports of labor-force status from the March Current Population Survey, Juhn, Murphy and Topel (1991, 2002) argued that the rise in male joblessness since the 1960s was almost entirely the result of a growing number of men withdrawing permanently from the workforce. Using contemporaneous reports of labor-force status, Coglianesi (2018) recently challenged this contention, showing that retrospective reports result in an undercount of brief non-participation spells. We continue to examine this issue by leveraging two longitudinal sources of labor-force participation data. The data come from a U.S. Census Bureau data product which links Survey of Income and Program Participation (SIPP) respondents to their earnings information from the Social Security Administration (SSA). Details are provided in the online appendix.

Using the SIPP data, we define participation as working at least one week in the given survey month, and report in the top panel of Table 1 participation transition probabilities for currently non-participating sub-groups of men with high school education or less. We consider two such groups: men who experienced a transition from participation to non-participation within the first 12 sample months, and men who began the sample period as non-participants. We observe substantial short-run spells of non-participation. Among white high school graduates who experienced a transition to non-participation, 51 percent had returned to the labor force after 3 months, and 77 percent had returned to the labor force after 12 months. Among white high school graduates who began the sample period as non-participants, 25 percent were in the labor force after 3 months and 49 percent were in the labor force after 12 months. While there are mild education and racial gradients to these estimates, we note striking consistency across demographic groups.

Using earnings histories from the SSA, which exist on a consistently-coded basis for the years 1978-2011, we are also able to construct participation transition rates over a longer-run horizon. These are shown in the second panel of Table 1. Following Coglianesse (2018), we define yearly participation as a situation in which total administrative earnings for the year exceed the threshold of one-half of the federal minimum wage times 40 hours per week times 13 weeks. We construct two similar groups of non-participants: men who experienced a transition to yearly non-participation within the first 15 years observed, and men who were non-participants in the first year observed. (Because the definition of participation differs in these short- and long-run analyses, the 12-month hazards reported in the top panel of Table 1 differ from the 1-year hazards reported in the bottom panel.) Among white high school graduates who experienced a transition to full-year non-participation, 66 percent had achieved annual participation 2 years later, and 83 percent had achieved annual participation 5 years later. Among white school graduates who entered the sample as full-year non-participants, 54 percent achieved annual participation after 2 years, and 76 percent achieved annual participation after 5 years.

These findings indicate substantial churn into and out of the labor force at long-run as well as short-run frequencies.

### **How do Jobless Men Survive?**

Another important aspect of labor market non-participation is an account of how non-participating men obtain resources. Table 2 records annual household income statistics for prime-age men with low labor-force attachment. (We define low labor-force attachment as no more than 13 weeks of employment during the reference year.) The March supplement to the Current Population Survey does not fully distinguish among relevant sources of income until



1992; thus, we consider all years from 1992 to 2017. For each education status, the top panel reports average levels of annual income, rounded to the nearest hundred and broken down by income source. This illustrates how much income the *average* man has access to and where it comes from. The bottom panel records the frequency with which each source of income accounts for the largest share of total household income, thereby illustrating *heterogeneity* in income receipt. The online appendix contains additional information on data processing and discusses some additional tabulations.

Low-participating men earn very little income: average earnings across all demographic groups are at or below \$1,300—an extremely low amount to live on for an entire year (top panels). Accordingly, only 2-3 percent of the time does the man’s own earnings account for the largest share of total household income (bottom panels). Among 45-54-year old men, own disability-related benefits are relatively important, amounting to around \$7,300 for whites and \$5,300 for blacks. Own disability benefits constitute the largest share of total household income in 25-30 percent of these cases. While this number is not small, it still represents a distinct minority; and for younger groups, own disability benefits are relatively unimportant. Across all demographic groups, income from other household members appears to be the dominant income source. This is especially true among 25-34-year-old men, where cohabitants’ income accounts for 82-86 percent of total household income on average, and some source of cohabitants’ income accounts for the largest share of household income 70-75 percent of the time. Even among 45-54-year men, some source of cohabitants’ income accounts for the largest share of household income in the majority of cases.

In tabulations not shown, we found that around 40 percent of white high school dropouts, 30 percent of white high school graduates, 53 percent of black high school dropouts and 44

percent of black high school graduates lived in households with total income below the federal poverty line. Much smaller shares, however—5-7 percent of whites and 7-10 percent of blacks—lived in extreme poverty (last row of the table). We define extreme poverty as a situation in which household members subsist on less than \$4 per day at 2017 prices, implementing a square-root equivalence scale to adjust for household size. For example, the extreme poverty threshold for a 4-person household is \$4 per day times 365 days times  $\sqrt{4}$  = \$2,920. Even smaller shares of men—around 3 percent across all groups—lived above the extreme poverty line but depended primarily on food stamps assistance (third-to-last row of the table). Thus, while living standards may not be high for these men, the income of other household members plays an effective role in keeping most of them out of extreme poverty.

It is important to reiterate that the above numbers are based on survey data. There is ample reason to believe that the reported earned income figures are underestimates, because episodic sources of income tend to be underreported (Mathiowetz, Bound and Brown 2002) or even unreported (Edin and Lein 1997; Meyer and Sullivan 2003, in this journal 2012; Bollinger et al. forthcoming). Recent work using administrative data has demonstrated that survey data understates the incomes of low-income men and overstates incidence of extreme poverty (Meyer and Mittag 2015; Meyer et al. 2018). However, this work tends to confirm the notion that men with a weak attachment to the workforce largely persist on the incomes of other household members.

## **Explaining the Decline**

Less-educated men have experienced downward trends in wages, employment and participation since the early 1970s. Therefore, in attempting to explain the latter trends, a

reasonable starting point is to ask if changes in the returns to labor market activity can account for the observed decline in labor market activity.

This interpretation of the data gained currency with the work of Juhn, Murphy and Topel (1991, 2002; see also Juhn 1992). Focusing on the period of the late 1960s thru late 1980s, these authors estimated labor supply curves from repeated cross-sectional and cross-regional data. In both cases, for less-skilled men, they found strong associations between declines in wages and declines in labor market activity, implying an uncompensated labor supply elasticity of around 0.4 for the lowest skilled group.<sup>8</sup> They interpreted their findings as reflecting labor demand shifts against a stable and upward-sloping supply curve.

We are uncomfortable with this interpretation for two reasons. The first is that it belies the conventional wisdom that the (uncompensated) labor supply curve for men is inelastic. This conventional wisdom comes from the fact that tremendous wage increases in the US, Canada, the UK and Germany between 1900 and 1970 have all been associated with *small declines* in the labor force participation of prime-age men (for international evidence, see Pencavel 1986; for US evidence, see Ruggles 2015). This notion makes economic sense: if leisure is a superior good, we would expect leisure's share in total household consumption to rise as wages rise. Second, although wages and participation for less-educated men trended downward in tandem throughout the 1970s and 80s, participation continued to decline after 1995, when wages were comparatively stable (recall Figure 1).

More recent work has also attributed secular decline in less-educated male wages and employment to declining labor demand (Autor 2011; Moffitt 2012; CEA 2016). For example,

---

<sup>8</sup> Interpreting this estimate as an uncompensated (Marshallian) labor supply elasticity, rather than as an inter-temporal (Frisch) elasticity, implies assuming that workers anticipated the wage changes they experienced to be permanent rather than temporary. Given the apparent protracted nature of local labor demand shocks in low- and medium-skill male sectors (to be discussed below), this assumption seems appropriate.

Abraham and Kearney (2018) write: “Our review of the evidence leads us to conclude that labor demand factors are the primary drivers of the secular decline in employment over the 1999 to 2016 period.” The growth of support for this connection has come from recent studies of local labor demand shocks. As mentioned earlier, Autor, Dorn and Hanson (2013) found that commuting zones with rising exposure to manufactured imports from China saw substantive declines in manufacturing employment and wages. Similarly, Charles, Hurst and Schwartz (2018) estimated that a 10 percent decline in manufacturing employment since 2000 led to an 18 percent decline in wages, a 7.9 percent decline in hours worked and a 4.6 percentage point decline in employment of less-educated men. These estimates imply an uncompensated labor supply elasticity of above 0.4.

It is important reconcile such estimates with the conventional wisdom of a small, or zero, uncompensated elasticity of labor supply. One possible reconciliation recognizes that the labor demand shocks in our period of study not only involve wage cuts, but also job losses, including mass layoffs or the closing of establishments. Displaced male workers take some time to return to the workforce (Jacobson, LaLonde and Sullivan 1993; Autor et al. 2014), in part because current local job losses are often associated with subsequent local job losses. For example, Dix-Carneiro and Kovak (2017) found that initial shocks (albeit in Brazil, not the United States) played out over an extended period partly because of the slow adjustment of capital to the initial shocks. In general, several researchers have documented the slowness of local economies to recover from economic shocks (Bartik 1991; Yagan 2017; Austin, Glaeser and Summers forthcoming).

After losing work, individuals may not easily transition into new jobs. For instance, Foote and Ryan (2015) showed that medium-skill displaced male workers tend to face few

attractive alternatives within their skill class and sector. Jaimovich and Siu (2015) captured this phenomenon in the context of a search model, in which those losing their jobs in declining sectors of the economy must consider whether to search for new work in the declining sector or invest in new skills. Such a framework can capture business cycle patterns but also secular shifts of the Beveridge curve. A parallel literature has illustrated a reluctance of workers to migrate to better labor markets (Kennan and Walker 2011; Dao, Furceri and Loungani 2017; Zabek 2018), underscoring the potential importance of migration as well as search frictions.

These dimensions of individual and local labor market adjustment following shocks strike us as key factors underlying the strong secular relationship between wages and participation seen in the 1970s, 1980s, and since 2002. Such adjustment frictions are also consistent with the fact that many spells of non-participation are not permanent (recall Table 1)—though it may take some time, most displaced individuals do return to the workforce. A labor supply framework which takes these factors seriously may help resolve the apparent inconsistency between the male labor supply behavior revealed by the historical record and that of the more recent period.

### **The Expansion of Disability Insurance**

A parallel explanation for the large increase in less-educated male joblessness, despite a comparatively small decrease in their wages, rests on factors operating outside of the labor market. An oft-examined factor is the dramatic increase in the availability and generosity of income maintenance programs targeted at people with disabilities. The largest such program is the Social Security Disability Insurance program (DI), of which we provide a brief history in the appendix. The DI rolls expanded considerably between the 1960s and early 1990s and have grown more slowly since. (For discussion in this journal, see Liebman 2015. Appendix Figure

A4 graphs trends in the population share of men receiving DI benefits by age group.)

To assess the extent to which DI expansions have impacted the male labor-force participation rate, Bound (1989) proposed the “rejected-applicant” method, which involves comparing participation behavior of those receiving DI benefits to those who applied for benefits but failed to pass the medical screening necessary to be granted benefits. In a sophisticated application of this method, Maestas, Mullen and Strand (2013) used random variation in stringency across DI case examiners to estimate that prime-age men on the margin of DI receipt have a labor-force participation rate of 40 percentage points higher than marginal beneficiaries.

Two issues arise when using this estimate to draw broader inferences about how the Social Security Disability Insurance program has impacted prime-age male labor-force participation. First, if the marginal beneficiary is healthier than the average beneficiary, then the marginal beneficiary’s work propensity may be more sensitive to benefit receipt than that of the average beneficiary. Second, estimates based on the rejected-applicant method are *conditional on having applied for benefits*. Since non-participation is necessary for eligibility, application for DI benefits itself may reduce participation. It may also affect rejected applicants’ subsequent participation behavior (Bound, 1989; Parsons, 1991; Bound 1991): rejected applicants may reapply, time spent out of work may affect rejected applicants’ job prospects, and the act of applying may permanently affect individuals’ identities.

Bound, Lindner and Waidmann (2014) attempted to circumvent these issues by arguing that the participation rate of individuals who report having a health-related work limitation but who never applied for DI benefits should be a conservative upper bound on the participation rate of both rejected and accepted applicants. Using SIPP-SSA data, they reported an employment rate differential between prime-age men with work limitations who never applied for DI benefits

and those who were awarded benefits of roughly 50 percentage points. The reported employment differential between rejected applicants and those awarded benefits was roughly 30 percentage points.

Pulling these considerations together, let us conservatively assume that the participation disincentive induced by applying for benefits outweighs the fact that the marginal beneficiary may be healthier than the average beneficiary. Under this assumption, Maestas et al.'s (2013) estimate of 0.40 times the DI participation rate lower-bounds the effect of the availability of DI benefits on the labor-force non-participation rate. On the other hand, under the assumption that the rejected applicant pool is the same size as the beneficiary pool (a slight exaggeration relative to what Bound, Lindner and Waidmann 2014 report), Bound, Lindner and Waidmann's (2014) logic yields an upper bound of  $0.50 + 0.30 = 0.80$  times the DI participation rate.

Table 3 uses March Current Population Survey data to compare prime-age male DI and labor-force participation rates, by age and education, between 1975-84 and 2008-2017.<sup>9</sup> (Decadal averages are used to reduce sampling error.) The last row of the table implements the bounding exercise just described, reporting a conservative upper bound estimate of the contribution of increased DI program participation to the concomitant rise in non-participation. Increased DI participation explains virtually none of the rise in non-participation among high school dropouts and little of the rise in non-participation among high school graduates below age 45. On the other hand, it could explain up to 25 percent of the rise in non-participation among 45-54-year-old high school graduates. In tabulations not shown, we found similar results for the "some college" group.

---

<sup>9</sup> Published data on the number of individuals receiving DI benefits do not report breakdowns by education. However, March CPS survey responses about income receipt seem to closely track published administrative statistics on DI receipt.

In addition to the roughness of this bounding exercise, we note that the growth in DI participation may be endogenous to falling labor demand. Previous work has demonstrated that adverse local labor demand shocks expand the DI rolls (Black, Daniel and Sanders 2002; Autor and Duggan 2003; Charles, Li and Stephens 2017). Rising DI participation may thus underlie some of the adjustment behavior noted above: rather than search for new work, displaced workers in relatively poor health may simply apply for DI.

### **Mass Incarceration**

The size of the U.S. prison population rose dramatically between 1970 and 2000, from roughly 0.1 percent to 0.5 percent of the total resident population (Raphael and Stoll, 2013). We have been studying the civilian, non-institutionalized male population in this paper—those incarcerated are excluded. However, as incarceration rates have grown, so has the previously-incarcerated share of the currently-non-institutionalized population. Bucknor and Barber (2016) estimated that in 2014, between 6.0 and 7.7 percent of all prime-age men had previously been incarcerated. For black men, the rates were between 19.4 and 21.9 percent; for high school dropout men, the rates were between 26.6 and 30.1 percent. Bucknor and Barber (2016) do not report cross-tabulations by education and race, but their figures suggest that potentially a substantial fraction of black male dropouts have prior prison records.

Survey data show that men with criminal records are less likely to be employed than observationally similar individuals without records. Employers report a reluctance to hire men with criminal convictions, while audit studies have found that those with criminal records are less likely to be called back for interviews (Holzer, Raphael and Stoll 2006a, 2006b; Pager 2003, 2007; Pager, Western and Bonikowski 2009). The most credible estimates of the effect of prior incarceration on employment leverage random assignment of defendants to courtrooms, judges



and prosecutors. Taking this design to data from Harris County, Texas, Mueller-Smith (2015) found that each additional year behind bars reduced post-release employment propensity by 3.6 percentage points. For felony defendants with stable pre-charge earnings, incarceration for one or more years reduced employment propensity by much larger amounts. Moreover, Mueller-Smith found prior incarceration to increase subsequent criminal activity. Harding et al. (2018) recently found comparable results using data from Michigan.

These estimates strongly support the notion that incarcerating men is likely to have significant effects on their future labor market outcomes (see also Raphael 2014). That said, there is no straightforward way to make inferences from such estimates about the impact of mass incarceration on non-institutionalized male labor-force participation. First, the estimates vary considerably across different sub-populations. Second, the statistical design delivers causal effects for the marginal, not the average, man incarcerated. Third, the estimates do not capture spillover effects of mass incarceration on local labor markets and communities.<sup>10</sup> Thus, while we do not feel comfortable using available information to even crudely estimate the effect of mass incarceration on the decline in male labor-force participation since the early 1990s, it seems likely that such effects exist and could be of sizable magnitude, especially among populations who have experienced particularly large exposure to prison (high school dropouts and blacks without any college education). We flag this as an important area for further research.

## **Feedback from the Marriage Market to Male Labor Supply**

---

<sup>10</sup> On spillover effects, two points are in order. First, recent research has found evidence of employer statistical discrimination on expected prior criminal history (Doleac and Hansen 2016; Agan and Starr, 2018). These findings suggest that, due to low-skill employers' hiring responses, rising incarceration may impact the labor market prospects of those who were not previously incarcerated but have similar observable characteristics to those who were. Second, men with outstanding warrants may be reticent to seek formal employment, as described in the ethnographic work of Goffman (2014) and supported in statistical analysis by Brayne (2014).

The above discussions frame a puzzle. On its own, falling labor demand does not sufficiently explain the secular decline in less-educated male labor-force participation—at least, not without allowing for substantial adjustment frictions in the long run as well as the short run. Rising access to disability insurance is at most a partial explanation for the 45-54-year-old group and matters quite little for younger men and for high school dropouts. Rising exposure to prison may be a significant factor for dropouts and for blacks without college education, but labor-force participation for these groups began declining decades before prison populations skyrocketed. Certainly no single explanation can sufficiently explain the decline; and even in combination, the explanations appear insufficient.

We suspect that there is another factor at play. We claim that the prospect of forming and providing for a new family constitutes an important male labor supply incentive; and thus, that developments within the marriage market can influence male labor-force participation. A decline in the formation of stable families produces a situation in which fewer men are actively involved in family provision or can expect to be involved in the future. This removes a labor supply incentive; and the possibility of drawing support from one's existing family, as shown earlier in Table 2, creates a feasible labor-force exit.

### **The Retreat from Marriage and Onset of Parental Cohabitation**

American family structure has undergone dramatic change since the 1960s, featuring a reduction in the incidence of stable two-parent households that has been concentrated in the non-college-educated population (Cherlin 2014; in this journal, Lundberg, Pollak and Stearns 2016). We summarize these changes in Table 4. Across all demographic groups without college education, the share of men currently married fell dramatically between 1970 and 2015. Currently-marrieds now make up a distinct minority of the black population without college

degree. As of 2015, only white high school graduates above age 35 were married a majority of the time, but even these groups experienced a 30-percentage-point drop in currently-married rates since 1970.<sup>11</sup> Similar changes have occurred for the some-college population.

Over the same period, the share of men living with at least one parent has risen in equally dramatic fashion. While parental co-residence was a rare event in 1970, by 2015, over one-quarter of whites and 40 percent of blacks aged 25-34 lived with a parent. Older groups experienced a smaller but still substantial rise in parental co-residence, especially considering the extremely low base rates. For example, white high school graduates aged 35-44 experienced a greater-than-threefold increase in the rate of parental co-residence, from 4 percent in 1970 to 13 percent in 2015. In tabulations not shown, we documented similar increases (though starting from higher base rates) in the shares of men cohabiting with parents *or* other adult relatives.

In this journal, Stevenson and Wolfers (2007) emphasized the contribution of a variety of important developments to the secular decline in marriage, including greater access to contraception, liberalization of family law, changes in home production technology which have reduced gains from task specialization within the household, and changes to how prospective partners match (for example, the rise of online dating). Falling stigmatism of out-of-wedlock childbearing and single motherhood are also likely relevant (Akerlof, Yellen and Katz 1996).

Others have argued that male earning potential is central to stable marriage formation. Becker (1981) popularized the “specialization-and-exchange” theory of marriage, which predicts that gains from marriage are an increasing function of the gender wage gap. Other work has

---

<sup>11</sup> Some of the measured decline in marriage has been offset by a rise in cohabitation with an unmarried partner. However, for the less-educated, cohabitation is often a transient and unstable situation. Copen, Daniels and Mosher (2013) report a median duration of cohabitations for less-educated individuals of 22-24 months, based on 2006-2010 data from the National Survey of Family Growth. Ishizuka (2018) reports similar findings in SIPP data, and also finds that cohabitations are less likely to transition into marriages for less-educated individuals. Since our underlying concept of interest is stable family formation, the focus on marriage seems warranted for this population of men.

suggested the influence of “male breadwinner norms:” even after accounting for specialization incentives, the marriage rate appears to decline when a local labor market shock makes men less likely to out-earn women (Bertrand, Kamenica and Pan 2015). A different paradigm contends that marriage occurs when the level of resources exceeds a standard associated with successful family pursuits (Easterlin 1966, 1987). Ruggles (2015) argued for the importance of declining less-educated male earnings prospects relative to those of their fathers. A variant marriage threshold is the typical living standard within a peer reference group (Gibson-Davis, Edin and McLanahan 2005; Watson and McLanahan 2011; Ishizuka 2018). In this view, rising income inequality harms the marriage prospects of below-median individuals.

### **Marriage as a Social Institution for Male Employment**

Previous work has associated marriage with a decline in irresponsible male behavior (Akerlof, 1998), such as crime (Edlund et al., 2013) and excessive drug and alcohol use (Duncan, Wilkerson and England, 2006). In the words of Lundberg, Pollak and Stearns (in this journal, 2016): “If social and economic changes have reduced the value of marriage to noncollege graduates, these changes may also be responsible for a further causal...effect on men’s behavior.”

Male participation in the labor force may also be a socially responsible activity that, like the avoidance of pathological behaviors, is intertwined with stable marriage. To the extent that the gains from marriage depend on male earnings, married men face an additional incentive to find and maintain a job. Indeed, the securing of gainful employment may even be stipulated by men’s (explicit or implicit) marital contracts with their wives. This mechanism has dynamic implications: with the expectation that they will one day marry and provide for a family, single men are incentivized to invest in their future productivity by working today. Doing so also

improves their positions in the marriage market, raising their probabilities of matching with high-quality spouses. As marriage rates, and attendant marital expectations decrease, so do these labor supply incentives.

We offer an informal assessment of this marriage market mechanism of labor supply in Table 5. We divide the population of interest into three mutually exclusive statuses: men living with at least one parent, unmarried men not living with a parent, and married men not living with a parent. We compute the decline in observed labor-force participation attributable to changes in population shares *between* these statuses versus changes in labor-force participation rates *within* each status during the period from 1970-2015. Our proposed mechanism emphasizes the contribution of shifts *between* statuses (as married men work more than unmarried men and marriage rates have declined); and declining labor-force participation *within* unmarried statuses (as expectations of stable family formation have declined among those currently unmarried). The latter process should be especially relevant for younger groups, where future marital expectations have plausibly changed the most.

As reported in the last column of Table 5, the decline in labor-force participation among those currently married accounts for a minority of the total observed decline in all demographic groups. This is especially true among blacks: the within-married component accounts for less than one-third of the total decline across all black sub-groups. We also observe the predicted age gradient: for groups of men aged 25-34, the within-married component accounts for only about one-quarter of the total change. Moreover, the 25-34 age groups have experienced almost as large a decline in labor-force participation as the older groups.

This mechanism offers an interpretation of the puzzle of the recent and disproportionate decline in labor-force participation among young males, identified by Aguiar et al. (2017). In

Appendix Table A4 we repeated the above decomposition for the population of men with 0-10 years of potential experience and not enrolled in school, considering changes from 1997-2015. For this group, observed declines in labor-force participation are largely explained by the between-status component and the within-living-with-parents component. Today's less-educated labor market entrants face increasingly small probabilities of forming their own stable families. Thus, while Aguiar et al. (2017) attribute their disproportionate withdrawal from the labor force to the rising value of leisure (stemming from innovations in video gaming technology), we suggest that a marriage-market-based fall in the value of work could be an alternative explanation.

### **Implications for the Relationship between Labor Demand and Labor Supply**

The marriage market mechanism we propose adds complexity to the relationship between male labor demand and labor supply. To the extent that male earning potential positively influences marriage, a decline in male labor demand results in fewer males forming and heading their own stable families. Thus, a male labor demand shock produces—through the marriage market—an indirect effect on male labor supply incentives and resultant labor-force participation.

The recent findings of Autor, Dorn and Hanson (2018) indicate that this indirect channel may be important. These authors found that rising local exposure to import competition from China led to local declines in the marriage rate and in the share of children living with their fathers. Thus, the large employment effects of local labor demand shocks may embed family-related effects in addition to the other adjustment frictions we have discussed. Family processes may also interact with these other adjustment frictions, for example by making men more dependent on their adult relatives and less amenable to finding a new occupation or labor market

in which to seek employment. In addition, others have argued that mass incarceration has disrupted family formation (for example, Charles and Luoh 2010; Schneider, Harknett and Stimpson 2018). These relationships further complicate the separate quantification of the various forces driving the decline in male labor-force participation.

## **Conclusion**

During the last 50 years, the earnings of prime-age men in the United States have stagnated and dispersed across the education distribution. At the same time, the labor-force participation rates of men without a college education have steadily declined. While wage and participation trends are often linked for this population, we have argued that this connection cannot solely be the result of an inward labor demand shift across a stable and elastic labor supply curve. The uncompensated labor supply elasticities implied by the twin declines of wages and participation during the 1970s, 1980s and 2000s appear too large to be plausible. Moreover, labor-force participation continued to decrease in the 1990s while wages were rising. While the increasing availability of disability benefits and the increase in the fraction of the population with prior incarceration exposure may help explain some of the participation decline, we doubt either factor can explain the bulk of the decline.

We have argued that more plausible explanations for the observed patterns involve feedbacks from male labor demand shocks, which often involve substantial job displacement, to worker adjustment frictions and to family structure. Marriage rates, and corresponding male labor supply incentives, have also fallen for reasons other than changing labor demand. We have moreover noted interactions between labor demand and disability benefit take-up, and between mass incarceration and family structure. These factors have all converged to reduce the

feasibility and desirability of stable employment, leading affected men, who may not often be eligible for disability or other benefits, to participate sporadically in the labor market and depend primarily on family members for income support. In sum, our observations lead us to be skeptical of attempts to attribute the secular decline in male labor-force participation to a series of separately-acting causal factors. We prefer an interpretation in which falling labor demand combined with other interconnected factors have led to substantially lower participation rates among men with less than a college education.



## References

- Abraham, Katharine G., and Melissa S. Kearney. 2018. "Explaining the Decline in the U.S. Employment-to-Population Ratio: A Review of the Evidence." Working Paper 24333. National Bureau of Economic Research. <https://doi.org/10.3386/w24333>.
- Acemoglu, Daron, and David Autor. 2011. "Skills, Tasks and Technologies: Implications for Employment and Earnings." In *Handbook of Labor Economics*, edited by David Card and Orley Ashenfelter, 4:1043–1171. Elsevier. [https://doi.org/10.1016/S0169-7218\(11\)02410-5](https://doi.org/10.1016/S0169-7218(11)02410-5).
- Acemoglu, Daron, and Pascual Restrepo. 2018. "Automation and New Tasks: The Implications of the Task Content of Production for Labor Demand." <https://economics.mit.edu/files/16338>
- Agan, Amanda, and Sonja Starr. 2018. "Ban the Box, Criminal Records, and Racial Discrimination: A Field Experiment." *The Quarterly Journal of Economics* 133 (1): 191–235. <https://doi.org/10.1093/qje/qjx028>.
- Aguiar, Mark, Mark Bilts, Kerwin Kofi Charles, and Erik Hurst. 2017. "Leisure Luxuries and the Labor Supply of Young Men." Working Paper 23552. National Bureau of Economic Research. <https://doi.org/10.3386/w23552>.
- Akerlof, George A. 1998. "Men Without Children." *The Economic Journal* 108 (447): 287–309. <https://doi.org/10.1111/1468-0297.00288>.
- Akerlof, George A., Janet L. Yellen, and Michael L. Katz. 1996. "An Analysis of Out-of-Wedlock Childbearing in the United States." *The Quarterly Journal of Economics* 111 (2): 277–317. <https://doi.org/10.2307/2946680>.
- Austin, Benjamin, Edward Glaeser, and Lawrence H. Summers. Forthcoming. "Saving the Heartland: Place-Based Policies in 21st Century America." *Brookings Papers on Economic Activity*.
- Autor, David H. 2014. "Skills, Education, and the Rise of Earnings Inequality among the 'Other 99 Percent.'" *Science* 344 (6186): 843–51. <https://doi.org/10.1126/science.1251868>.
- . 2011. "The Polarization of Job Opportunities in the U.S. Labor Market: Implications for Employment and Earnings." *Community Investments* 23 (2): 11–16.
- Autor, David H., David Dorn, and Gordon Hanson. 2018. "When Work Disappears: Manufacturing Decline and the Falling Marriage Market Value of Young Men." Discussion Paper 11465. IZA Institute of Labor Economics.
- Autor, David H., David Dorn, Lawrence F. Katz, Christina Patterson, and John Van Reenen. 2017. "Concentrating on the Fall of the Labor Share." *American Economic Review* 107 (5): 180–85. <https://doi.org/10.1257/aer.p20171102>.
- Autor, David H., David Dorn, and Gordon H. Hanson. 2013. "The China Syndrome: Local Labor Market Effects of Import Competition in the United States." *American Economic Review* 103 (6): 2121–68. <https://doi.org/10.1257/aer.103.6.2121>.
- Autor, David H., David Dorn, Gordon H. Hanson, and Jae Song. 2014. "Trade Adjustment: Worker-Level Evidence." *The Quarterly Journal of Economics* 129 (4): 1799–1860. <https://doi.org/10.1093/qje/qju026>.

- Autor, David H., and Mark G. Duggan. 2003. "The Rise in the Disability Rolls and the Decline in Unemployment." *The Quarterly Journal of Economics* 118 (1): 157–206. <https://doi.org/10.1162/00335530360535171>.
- Autor, David H., Lawrence F. Katz, and Melissa S. Kearney. 2006. "The Polarization of the U.S. Labor Market." *American Economic Review* 96 (2): 189–94. <https://doi.org/10.1257/000282806777212620>.
- . 2008. "Trends in U.S. Wage Inequality: Revising the Revisionists." *The Review of Economics and Statistics* 90 (2): 300–323. <https://doi.org/10.1162/rest.90.2.300>.
- Autor, David H., Lawrence F. Katz, and Alan B. Krueger. 1998. "Computing Inequality: Have Computers Changed the Labor Market?" *The Quarterly Journal of Economics* 113 (4): 1169–1213. <https://doi.org/10.1162/003355398555874>.
- Autor, David H., Frank Levy, and Richard J. Murnane. 2002. "Upstairs, Downstairs: Computers and Skills on Two Floors of a Large Bank." *ILR Review* 55 (3): 432–47. <https://doi.org/10.1177/001979390205500303>.
- . 2003. "The Skill Content of Recent Technological Change: An Empirical Exploration." *The Quarterly Journal of Economics* 118 (4): 1279–1333. <https://doi.org/10.1162/003355303322552801>.
- Autor, David H., Alan Manning, and Christopher L. Smith. 2016. "The Contribution of the Minimum Wage to US Wage Inequality over Three Decades: A Reassessment." *American Economic Journal: Applied Economics* 8 (1): 58–99. <https://doi.org/10.1257/app.20140073>.
- Bartik, Timothy. 1991. *Who Benefits from State and Local Economic Development Policies?* Kalamazoo, MI: Upjohn Press. [http://research.upjohn.org/up\\_press/77](http://research.upjohn.org/up_press/77).
- Becker, Gary S. 1981. *A Treatise on the Family*. Cambridge, MA: Harvard University Press.
- Berman, Eli, John Bound, and Zvi Griliches. 1994. "Changes in the Demand for Skilled Labor within U. S. Manufacturing: Evidence from the Annual Survey of Manufactures." *The Quarterly Journal of Economics* 109 (2): 367–97. <https://doi.org/10.2307/2118467>.
- Bertrand, Marianne, Emir Kamenica, and Jessica Pan. 2015. "Gender Identity and Relative Income within Households." *The Quarterly Journal of Economics* 130 (2): 571–614.
- Bivens, L. Josh. 2007. "The Gains from Trade: How Big and Who Gets Them?" Working Paper 280. Washington, DC: Economic Policy Institute.
- Black, Dan, Kermit Daniel, and Seth Sanders. 2002. "The Impact of Economic Conditions on Participation in Disability Programs: Evidence from the Coal Boom and Bust." *American Economic Review* 92 (1): 27–50. <https://doi.org/10.1257/000282802760015595>.
- Blau, Francine D., and Lawrence M. Kahn. 2017. "The Gender Wage Gap: Extent, Trends, and Explanations." *Journal of Economic Literature* 55 (3): 789–865. <https://doi.org/10.1257/jel.20160995>.
- Bollinger, Christopher R., Barry T. Hirsch, Charles M. Hokayem, and James P. Ziliak. Forthcoming. "Trouble in the Tails? What We Know about Earnings Nonresponse Thirty Years after Lillard, Smith and Welch." *Journal of Political Economy*.
- Borjas, George J. 2016. *We Wanted Workers: Unraveling the Immigration Narrative*. New York, NY: W. W. Norton & Company.

- . 2017. “The Labor Supply of Undocumented Immigrants.” *Labour Economics* 46 (June): 1–13. <https://doi.org/10.1016/j.labeco.2017.02.004>.
- Bound, John. 1989. “The Health and Earnings of Rejected Disability Insurance Applicants.” *American Economic Review* 79 (3): 482–503.
- . 1991. “The Health and Earnings of Rejected Disability Insurance Applicants: Reply.” *The American Economic Review* 81 (5): 1427–34.
- Bound, John, and George E Johnson. 1992. “Changes in the Structure of Wages During the 1980’s: An Evaluation of Alternative Explanations.” *American Economic Review* 82 (3): 371–392.
- Bound, John, Stephan Lindner, and Timothy Waidmann. 2014. “Reconciling Findings on the Employment Effect of Disability Insurance.” *IZA Journal of Labor Policy* 3 (11): 1–23. <https://doi.org/10.1186/2193-9004-3-11>.
- Brayne, Sarah. 2014. “Surveillance and System Avoidance: Criminal Justice Contact and Institutional Attachment.” *American Sociological Review* 79 (3): 367–391.
- Bucknor, Cherrie, and Alan Barber. 2016. “The Price We Pay: Economic Costs of Barriers to Employment for Former Prisoners and People Convicted of Felonies.” CEPR Reports and Issue Briefs. Center for Economic and Policy Research. <https://ideas.repec.org/p/epo/papers/2016-07.html>.
- Burstein, Ariel, Gordon Hanson, Lin Tian, and Jonathan Vogel. 2017. “Tradability and the Labor-Market Impact of Immigration: Theory and Evidence from the U.S.” Working Paper 23330. National Bureau of Economic Research. <https://doi.org/10.3386/w23330>.
- Card, David. 2009. “Immigration and Inequality.” *American Economic Review* 99 (2): 1–21. <https://doi.org/10.1257/aer.99.2.1>.
- Card, David, and Thomas Lemieux. 2001. “Can Falling Supply Explain the Rising Return to College for Younger Men? A Cohort-Based Analysis.” *The Quarterly Journal of Economics* 116 (2): 705–46. <https://doi.org/10.1162/00335530151144140>.
- Charles, Kerwin Kofi, Erik Hurst, and Matthew J. Notowidigdo. 2016. “The Masking of the Decline in Manufacturing Employment by the Housing Bubble.” *Journal of Economic Perspectives* 30 (2): 179–200. <https://doi.org/10.1257/jep.30.2.179>.
- Charles, Kerwin Kofi, Erik Hurst, and Mariel Schwartz. 2018. “The Transformation of Manufacturing and the Decline in U.S. Employment.” *NBER Macroeconomics Annual* 33 (May). <http://www.nber.org/chapters/c14081>.
- Charles, Kerwin Kofi, Yiming Li, and Melvin Stephens. 2017. “Disability Benefit Take-Up and Local Labor Market Conditions.” *The Review of Economics and Statistics* 100 (3): 416–23. [https://doi.org/10.1162/rest\\_a\\_00692](https://doi.org/10.1162/rest_a_00692).
- Charles, Kerwin Kofi, and Ming Ching Luoh. 2010. “Male Incarceration, the Marriage Market, and Female Outcomes.” *The Review of Economics and Statistics* 92 (3): 614–27. [https://doi.org/10.1162/REST\\_a\\_00022](https://doi.org/10.1162/REST_a_00022).
- Cherlin, Andrew J. 2014. *Labor’s Love Lost: The Rise and Fall of the Working-Class Family in America*. New York: Russell Sage Foundation.

- Cline, William R. 1997. *Trade and Income Distribution*. Washington, DC: Peterson Institute for International Economics.
- Coglianesi, John. 2018. "The Rise of In-and-Outs: Declining Labor Force Participation of Prime Age Men." [https://scholar.harvard.edu/files/coglianesi/files/coglianesi\\_2017\\_in-and-outs.pdf](https://scholar.harvard.edu/files/coglianesi/files/coglianesi_2017_in-and-outs.pdf) .
- Copen, Casey E., Kimberly Daniels, and William D. Mosher. 2013. "First Premarital Cohabitation in the United States: 2006-2010 National Survey of Family Growth." *National Health Statistics Reports* (64): 1-15.
- Cortes, Patricia. 2008. "The Effect of Low-Skilled Immigration on U.S. Prices: Evidence from CPI Data." *Journal of Political Economy* 116 (3): 381–422. <https://doi.org/10.1086/589756>.
- Council of Economic Advisers. 2016. "The Long-Term Decline in Prime-Age Male Labor-Force Participation." [https://obamawhitehouse.archives.gov/sites/default/files/page/files/20160620\\_cea\\_primeage\\_male\\_lfp.pdf](https://obamawhitehouse.archives.gov/sites/default/files/page/files/20160620_cea_primeage_male_lfp.pdf)
- Dao, Mai, Davide Furceri, and Prakash Loungani. 2016. "Regional Labor Market Adjustment in the United States: Trend and Cycle." *The Review of Economics and Statistics* 99 (2): 243–57. [https://doi.org/10.1162/REST\\_a\\_00642](https://doi.org/10.1162/REST_a_00642).
- Deaton, Angus, and John Muellbauer. 1980. *Economics and Consumer Behavior*. New York, NY: Cambridge University Press.
- DiNardo, John, Nicole M. Fortin, and Thomas Lemieux. 1996. "Labor Market Institutions and the Distribution of Wages, 1973-1992: A Semiparametric Approach." *Econometrica* 64 (5): 1001–44.
- Dix-Carneiro, Rafael, and Brian K. Kovak. 2017. "Trade Liberalization and Regional Dynamics." *American Economic Review* 107 (10): 2908–46. <https://doi.org/10.1257/aer.20161214>.
- Doleac, Jennifer L, and Benjamin Hansen. 2016. "Does 'Ban the Box' Help or Hurt Low-Skilled Workers? Statistical Discrimination and Employment Outcomes When Criminal Histories Are Hidden." Working Paper 22469. National Bureau of Economic Research. <https://doi.org/10.3386/w22469>.
- Duncan, Greg J., Bessie Wilkerson, and Paula England. 2006. "Cleaning up Their Act: The Effects of Marriage and Cohabitation on Licit and Illicit Drug Use." *Demography* 43 (4): 691–710. <https://doi.org/10.1353/dem.2006.0032>.
- Easterlin, Richard A. 1987. *Birth and Fortune*. 2nd ed. Chicago, IL: University of Chicago Press.
- . 1966. "On the Relation of Economic Factors to Recent and Projected Fertility Changes." *Demography* 3: 131–53.
- Edin, Kathryn J., and Laura Lein. 1997. *Making Ends Meet: How Single Mothers Survive Welfare and Low-Wage Work*. New York, NY: Russell Sage Foundation.
- Edlund, Lena, Hongbin Li, Junjian Yi, and Junsen Zhang. 2013. "Sex Ratios and Crime: Evidence from China." *The Review of Economics and Statistics* 95 (5): 1520–34. [https://doi.org/10.1162/REST\\_a\\_00356](https://doi.org/10.1162/REST_a_00356).
- Elsby, Michael W. L., Bart Hobijn, and Ayşegül Şahin. 2013. "The Decline of the U.S. Labor Share." *Brookings Papers on Economic Activity* 2013 (2): 1–63. <https://doi.org/10.1353/eca.2013.0016>.

- Feenstra, Robert C., and Gordon H. Hanson. 1996. "Globalization, Outsourcing, and Wage Inequality." *American Economic Review* 86 (2): 240–45.
- . 1999. "The Impact of Outsourcing and High-Technology Capital on Wages: Estimates For the United States, 1979–1990." *The Quarterly Journal of Economics* 114 (3): 907–40. <https://doi.org/10.1162/003355399556179>.
- Foote, Christopher L., and Richard W. Ryan. 2015. "Labor-Market Polarization over the Business Cycle." *NBER Macroeconomics Annual* 29 (1): 371–413. <https://doi.org/10.1086/680656>.
- Fortin, Nicole M., and Thomas Lemieux. 1997. "Institutional Changes and Rising Wage Inequality: Is There a Linkage?" *Journal of Economic Perspectives* 11 (2): 75–96. <https://doi.org/10.1257/jep.11.2.75>.
- Fortin, Nicole M., Thomas Lemieux, and Neil Lloyd. 2018. "Labor Market Institutions and the Distribution of Wages: The Role of Spillover Effects." [https://econ2017.sites.olt.ubc.ca/files/2018/12/pdf\\_paper\\_thomas-lemieux-spillovers.pdf](https://econ2017.sites.olt.ubc.ca/files/2018/12/pdf_paper_thomas-lemieux-spillovers.pdf)
- Freeman, Richard B. 1975. "Overinvestment in College Training?" *The Journal of Human Resources* 10 (3): 287–311. <https://doi.org/10.2307/145193>.
- Frey, Carl Benedikt, and Michael A. Osborne. 2017. "The Future of Employment: How Susceptible Are Jobs to Computerisation?" *Technological Forecasting and Social Change* 114 (January): 254–80. <https://doi.org/10.1016/j.techfore.2016.08.019>.
- Gibson-Davis, Christina M., Kathryn Edin, and Sara McLanahan. 2005. "High Hopes but Even Higher Expectations: The Retreat from Marriage Among Low-Income Couples." *Journal of Marriage and Family* 67 (5): 1301–12. <https://doi.org/10.1111/j.1741-3737.2005.00218.x>.
- Goldin, Claudia, and Lawrence F. Katz. 2008. *The Race between Education and Technology*. Cambridge, Massachusetts: Belknap Press.
- Harding, David J., Jeffrey D. Morenoff, Anh P. Nguyen, and Shawn D. Bushway. 2018. "Imprisonment and Labor Market Outcomes: Evidence from a Natural Experiment." *American Journal of Sociology* 124 (1): 49–110. <https://doi.org/10.1086/697507>.
- Hirsch, Barry T. 1988. "Trucking Regulation, Unionization, and Labor Earnings: 1973-85." *The Journal of Human Resources* 23 (3): 296–319. <https://doi.org/10.2307/145831>.
- Holzer, Harry J. 2010. "Is the Middle of the U.S. Job Market Really Disappearing? A Comment on the 'Polarization' Hypothesis." Center for American Progress.
- Holzer, Harry J., Steven Raphael, and Michael A. Stoll. 2006a. "How Do Employer Perceptions of Crime and Incarceration Affect the Employment Prospects of Less-Educated Young Black Men?" In *Black Males Left Behind*, edited by Ronald B. Mincy. Washington, DC: The Urban Institute Press.
- Holzer, Harry J., Steven Raphael, and Michael A. Stoll. 2006b. "Perceived Criminality, Criminal Background Checks, and the Racial Hiring Practices of Employers." *The Journal of Law and Economics* 49 (2): 451–80. <https://doi.org/10.1086/501089>.
- Ishizuka, Patrick. 2018. "The Economic Foundations of Cohabiting Couples' Union Transitions." *Demography* 55 (2): 535–57. <https://doi.org/10.1007/s13524-018-0651-1>.

- Jacobson, Louis S., Robert J. LaLonde, and Daniel G. Sullivan. 1993. "Earnings Losses of Displaced Workers." *The American Economic Review* 83 (4): 685–709.
- Jaimovich, Nir, and Henry E. Siu. 2015. "Job Polarization and Jobless Recoveries." <http://faculty.arts.ubc.ca/hsiu/work/polar20150503.pdf>
- Juhn, Chinhui. 1992. "Decline of Male Labor Market Participation: The Role of Declining Market Opportunities." *The Quarterly Journal of Economics* 107 (1): 79–121. <https://doi.org/10.2307/2118324>.
- Juhn, Chinhui, Kevin M. Murphy, and Robert H. Topel. 2002. "Current Unemployment, Historically Contemplated." *Brookings Papers on Economic Activity* 2002 (1): 79–116.
- Juhn, Chinhui, Kevin M. Murphy, and Robert H. Topel. 1991. "Why Has the Natural Rate of Unemployment Increased over Time?" *Brookings Papers on Economic Activity* 1991 (2): 75–142. <https://doi.org/10.2307/2534590>.
- Karabarbounis, Loukas, and Brent Neiman. 2014. "The Global Decline of the Labor Share." *The Quarterly Journal of Economics* 129 (1): 61–103. <https://doi.org/10.1093/qje/qjt032>.
- Katz, Lawrence F. 2008. Comment on "Trade and Wages, Reconsidered" by P. Krugman. *Brookings Papers on Economic Activity* 2008 (1): 143–149.
- Katz, Lawrence F., and Kevin M. Murphy. 1992. "Changes in Relative Wages, 1963–1987: Supply and Demand Factors." *The Quarterly Journal of Economics* 107 (1): 35–78. <https://doi.org/10.2307/2118323>.
- Kennan, John, and James R. Walker. 2011. "The Effect of Expected Income on Individual Migration Decisions." *Econometrica* 79 (1): 211–51. <https://doi.org/10.3982/ECTA4657>.
- Krugman, Paul R. 2008. "Trade and Wages, Reconsidered." *Brookings Papers on Economic Activity* 2008 (1): 103–54. <https://doi.org/10.1353/eca.0.0006>.
- Lee, David S. 1999. "Wage Inequality in the United States During the 1980s: Rising Dispersion or Falling Minimum Wage?" *The Quarterly Journal of Economics* 114 (3): 977–1023. <https://doi.org/10.1162/003355399556197>.
- Levy, Frank, and Richard J. Murnane. 2004. *The New Division of Labor: How Computers Are Creating the Next Job Market*. Princeton, NJ; New York, NY: Princeton University Press; Russell Sage Foundation.
- Lundberg, Shelly, Robert A. Pollak, and Jenna Stearns. 2016. "Family Inequality: Diverging Patterns in Marriage, Cohabitation, and Childbearing." *Journal of Economic Perspectives* 30 (2): 79–102. <https://doi.org/10.1257/jep.30.2.79>.
- Maestas, Nicole, Kathleen J. Mullen, and Alexander Strand. 2013. "Does Disability Insurance Receipt Discourage Work? Using Examiner Assignment to Estimate Causal Effects of SSDI Receipt." *American Economic Review* 103 (5): 1797–1829. <https://doi.org/10.1257/aer.103.5.1797>.
- Mathiowetz, Nancy, John Bound, and Charles Brown. 2002. "Measurement Error in Surveys of the Low-Income Population." In *Studies of Welfare Populations*, Committee on National Statistics, National Research Council.
- Mazzolari, Francesca, and Giuseppe Ragusa. 2013. "Spillovers from High-Skill Consumption to Low-Skill Labor Markets." *The Review of Economics and Statistics* 95 (1): 74–86. [https://doi.org/10.1162/REST\\_a\\_00234](https://doi.org/10.1162/REST_a_00234).

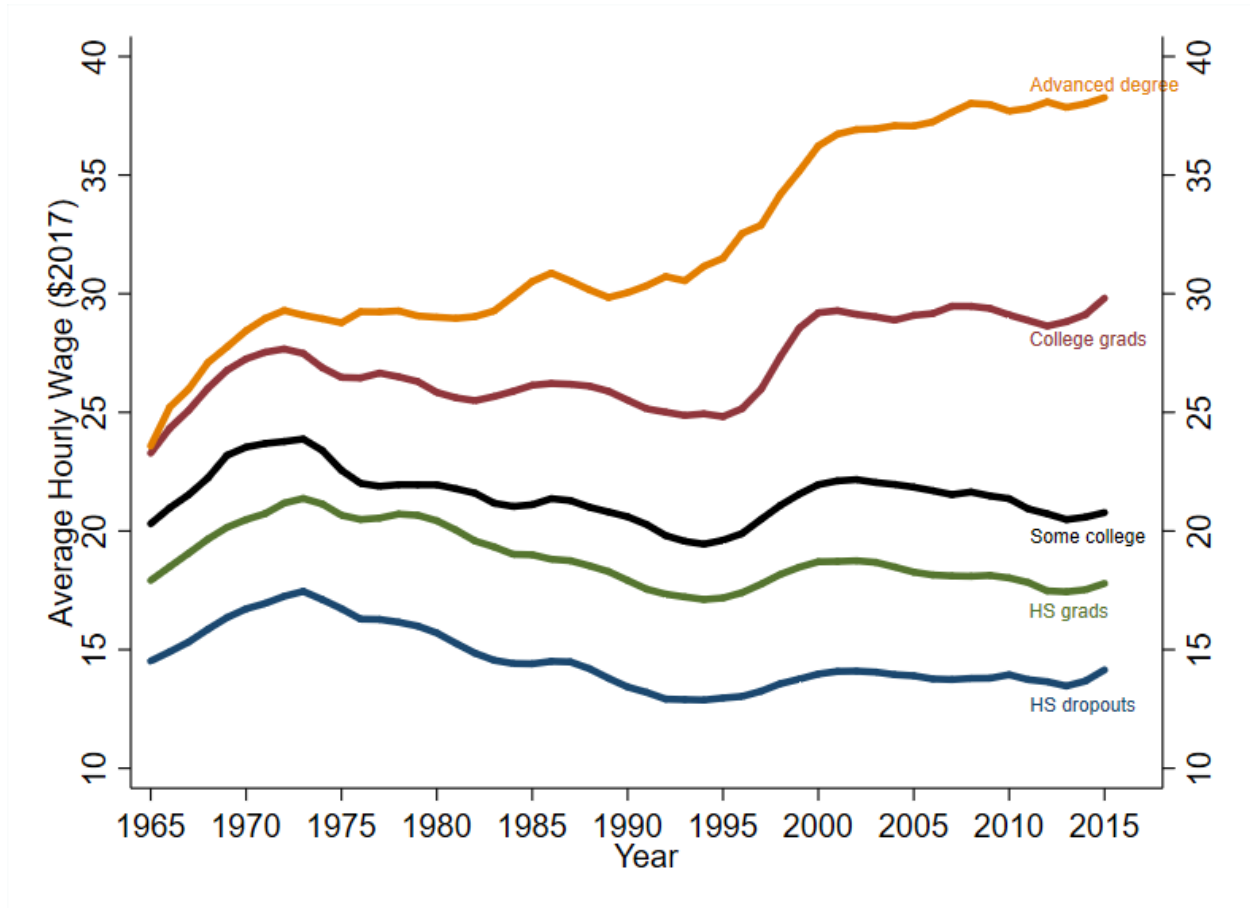
- Meyer, Bruce D., and Nikolas Mittag. 2015. "Using Linked Survey Data and Administrative Data to Better Measure Income: Implications for Poverty, Program Effectiveness and Holes in the Safety Net." Working Paper 21676. National Bureau of Economic Research. <https://www.nber.org/papers/w21676>
- Meyer, Bruce D., and James X. Sullivan. 2003. "Measuring the Well-Being of the Poor Using Income and Consumption." *The Journal of Human Resources* 38: 1180–1220. <https://doi.org/10.2307/3558985>.
- . 2012. "Identifying the Disadvantaged: Official Poverty, Consumption Poverty, and the New Supplemental Poverty Measure." *Journal of Economic Perspectives* 26 (3): 111–36. <https://doi.org/10.1257/jep.26.3.111>.
- Meyer, Bruce D., Derek Wu, Victoria Mooers, and Carla Medalia. 2018. "The Use and Misuse of Income Data and the Rarity of Extreme Poverty in the United States." Working paper.
- Moffitt, Robert A. 2012. "The Reversal of the Employment-Population Ratio in the 2000s: Facts and Explanations." *Brookings Papers on Economic Activity*, 201–64.
- Mueller-Smith, Michael. 2015. "The Criminal and Labor Market Impacts of Incarceration." <https://sites.lsa.umich.edu/mgms/wp-content/uploads/sites/283/2015/09/incar.pdf>
- Murphy, Daniel. 2016. "Welfare Consequences of Asymmetric Growth." *Journal of Economic Behavior & Organization* 126 (June): 1–17. <https://doi.org/10.1016/j.jebo.2016.02.003>.
- Murphy, Kevin M., and Finis Welch. 1991. "The Role of International Trade in Wage Differentials." In *Workers and Their Wages*, edited by Marvin H. Kosters. Washington, DC: The AEI Press.
- . 1992. "The Structure of Wages." *The Quarterly Journal of Economics* 107 (1): 285–326. <https://doi.org/10.2307/2118330>.
- Pager, Devah. 2003. "The Mark of a Criminal Record." *American Journal of Sociology* 108 (5): 937–75. <https://doi.org/10.1086/374403>.
- . 2007. *Marked: Race, Crime, and Finding Work in an Era of Mass Incarceration*. Chicago, IL: University of Chicago Press. <http://www.press.uchicago.edu/ucp/books/book/chicago/M/bo5485761.html>.
- Pager, Devah, Bart Bonikowski, and Bruce Western. 2009. "Discrimination in a Low-Wage Labor Market: A Field Experiment." *American Sociological Review* 74 (5): 777–99. <https://doi.org/10.1177/000312240907400505>.
- Parsons, Donald O. 1991. "The Health and Earnings of Rejected Disability Insurance Applicants: Comment." *The American Economic Review* 81 (5): 1419–26.
- Pencavel, John. 1986. "Labor Supply of Men: A Survey." In *Handbook of Labor Economics*, 1:3–102. Elsevier. [https://doi.org/10.1016/S1573-4463\(86\)01004-0](https://doi.org/10.1016/S1573-4463(86)01004-0).
- Peri, Giovanni. 2016. "Immigrants, Productivity, and Labor Markets." *Journal of Economic Perspectives* 30 (4): 3–30. <https://doi.org/10.1257/jep.30.4.3>.
- Peri, Giovanni, and Chad Sparber. 2009. "Task Specialization, Immigration, and Wages." *American Economic Journal: Applied Economics* 1 (3): 135–69. <https://doi.org/10.1257/app.1.3.135>.
- Raphael, Steven. 2014. *The New Scarlet Letter? Negotiating the U.S. Labor Market with a Criminal Record*. Kalamazoo, MI: W.E. Upjohn Institute.

- Raphael, Steven, and Michael A. Stoll. 2013. *Why Are So Many Americans in Prison?* Russell Sage Foundation.
- Rose, Nancy L. 1987. "Labor Rent Sharing and Regulation: Evidence from the Trucking Industry." *Journal of Political Economy* 95 (6): 1146–78. <https://doi.org/10.1086/261509>.
- Ruggles, Steven. 2015. "Patriarchy, Power and Pay: The Transformation of American Families, 1800-2015." *Demography* 52 (6): 1797–1823.
- Schneider, Daniel, Kristen Harknett, and Matthew Stimpson. 2018. "What Explains the Decline in First Marriage in the United States? Evidence from the Panel Study of Income Dynamics, 1969 to 2013." *Journal of Marriage and Family* 80 (4): 791–811. <https://doi.org/10.1111/jomf.12481>.
- Stevenson, Betsey, and Justin Wolfers. 2007. "Marriage and Divorce: Changes and Their Driving Forces." *Journal of Economic Perspectives* 21 (2): 27–52. <https://doi.org/10.1257/jep.21.2.27>.
- Watson, Tara, and Sara McLanahan. 2011. "Marriage Meets the Joneses Relative Income, Identity, and Marital Status." *Journal of Human Resources* 46 (3): 482–517. <https://doi.org/10.3368/jhr.46.3.482>.
- Yagan, Danny. 2017. "Employment Hysteresis from the Great Recession." Working Paper 23844. National Bureau of Economic Research. <https://doi.org/10.3386/w23844>.
- Zabek, Mike. 2018. "Local Ties in Spatial Equilibrium." <https://mikezabek.com/pdf/LocalTies.pdf>.



Figure 1

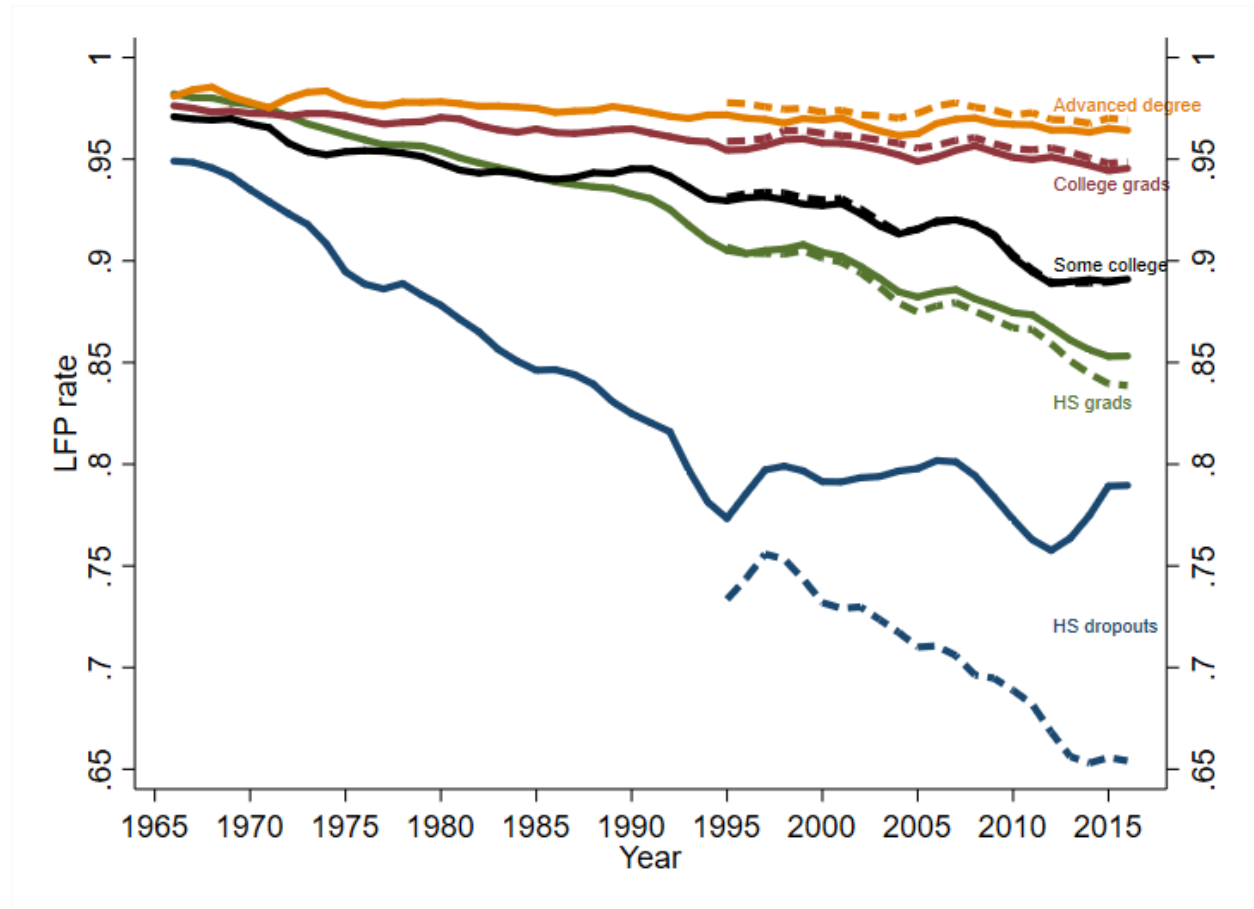
**Real Hourly Earnings by Education Status, Men Aged 25-54, 1965-2016**  
(2017 dollars)



*Source:* Authors' calculations based on the March Supplement to the Current Population Survey. Annual wage and salary income is adjusted for top-coding and converted to 2017 dollars using the Personal Consumption Expenditures deflator. Hourly earnings are computed by dividing annual earnings by total hours worked (the product of weeks worked and usual hours worked per week). Before the 1976 survey, weeks worked and usual hours worked per week are imputed using demographic information in conjunction with information on bracketed weeks worked and hours worked last week. Within each education status, a re-weighting procedure is employed to hold the age distribution constant across each year. See the online Appendix for further details. Geometric average hourly wages are computed as the exponential of the average of log hourly wages. Graph presents 3-year centered moving averages.

Figure 2

Labor-Force Participation Rates by Education Status, Males Aged 25-54, 1965-2016



Source: Authors' calculations based on the March supplement to the Current Population Survey. Dotted lines exclude foreign-born (the CPS begins tracking birthplace in 1994). Within each education status, a re-weighting procedure is employed to hold the age distribution constant across each year. See the online Appendix for further details. Graph presents 3-year centered moving averages.

Table 1

**Male Workforce Attachment over the Short and Long Run for those with High School Education or Less: Evidence from SIPP-SSA Longitudinal Data, 1978-2011**

<i>Short-run N --&gt; P transition probabilities</i>						
Group	Race	Education	1 month	3 months	6 months	12 months
Experienced a P-->N transition in first 12 panel months	Whites	Dropouts	0.18	0.45	0.63	0.72
		HS grads	0.19	0.51	0.69	0.77
	Blacks	Dropouts	0.16	0.33	0.50	0.59
		HS grads	0.15	0.38	0.57	0.66
Non-participant in first panel month	Whites	Dropouts	0.08	0.24	0.38	0.46
		HS grads	0.09	0.25	0.40	0.49
	Blacks	Dropouts	0.05	0.16	0.24	0.30
		HS grads	0.07	0.18	0.29	0.36
<i>Long-run N --&gt; P transition probabilities</i>						
Group	Race	Education	1 year	2 years	5 years	10 years
Experienced a P-->N transition in first 15 years observed	Whites	Dropouts	0.42	0.58	0.76	0.83
		HS grads	0.50	0.66	0.83	0.89
	Blacks	Dropouts	0.34	0.50	0.69	0.77
		HS grads	0.40	0.57	0.76	0.83
Non-participant in first year observed	Whites	Dropouts	0.27	0.39	0.54	0.62
		HS grads	0.43	0.54	0.72	0.81
	Blacks	Dropouts	0.29	0.38	0.51	0.57
		HS grads	0.34	0.47	0.63	0.74

*Source:* Authors' calculations based on 1984-2008 SIPP panels (top panel) and SIPP panels linked to SSA earnings records (bottom panel). Sample consists of men with 0-30 years of potential experience and not enrolled in school at the beginning of the SIPP panel window. The top panel reports the share of men who transitioned out of non-participation by the given month—1, 3, 6, or 12 months after the initial experience of non-participation. 2 groups of men are considered: those who experienced a transition to non-participation within the first 12 panel months, and those who were non-participants at the start of the panel window. The bottom panel considers the SSA earnings records of all SIPP panel respondents, over the subset of years 1978-2011 when the respondents had between 0 and 30 years of potential experience. It reports the share of men who transitioned out of non-participation by the given year—1, 2, 5, or 10 years after the initial experience of non-participation. Yearly participation is defined as having total administrative earnings for the year above a minimum threshold. 2 groups of men are considered: those who experienced a transition to non-participation within the first 15 years of observation, and those who were non-participants in the first year of observation. See main text and online Appendix for further details.

Table 2

### Household Income Characteristics of Men with Low Labor-Force Attachment by Race, Education and Age, 1992-2017

#### Panel A. High School Dropouts

	Whites			Blacks		
	25-34	35-44	45-54	25-34	35-44	45-54
<i>Average Annual Income (\$)</i>						
Own earnings	900	1,100	500	500	400	300
Total unearned income	35,000	28,300	28,400	29,200	28,300	23,500
own disability-related benefits	3,300	5,700	7,600	2,400	4,200	5,400
own other unearned income	900	1,100	1,500	400	700	900
cohabitants' total earnings	21,800	13,100	12,500	18,600	15,800	10,100
cohabitants' total unearned income	8,000	7,400	6,100	6,600	6,800	6,300
household food stamps income	1,000	1,000	700	1,200	800	800
<i>Maximal Source of Income (%)</i>						
Own earnings	3	2	2	2	2	1
Own disability-related benefits	12	23	31	10	18	27
Earnings OR unearned income from:						
parents	30	21	11	38	22	16
spouse	15	20	20	5	12	12
other HH members	25	20	21	31	31	26
HH food stamps income	4	3	3	4	3	4
Other source or tie	5	6	7	4	5	6
None (living on < \$4 per day)	6	5	5	6	7	8

#### Panel B. High School Graduates

	Whites			Blacks		
	25-34	35-44	45-54	25-34	35-44	45-54
<i>Average Annual Income (\$)</i>						
Own earnings	1,300	1,300	1,300	600	700	600
Total unearned income	43,000	35,900	36,200	36,800	29,200	27,800
own disability-related benefits	3,100	5,300	7,200	2,400	3,600	5,300
own other unearned income	1,600	2,100	3,600	800	1,300	2,200
cohabitants' total earnings	30,200	19,900	18,000	26,100	17,000	14,100
cohabitants' total unearned income	7,400	7,900	6,900	6,600	6,500	5,500
household food stamps income	700	700	500	900	800	700
<i>Maximal Source of Income (%)</i>						
Own earnings	3	3	2	2	2	2
Own disability-related benefits	9	18	25	7	14	24
Earnings OR unearned income from:						
parents	35	21	12	41	23	11
spouse	14	22	24	7	17	19
other HH members	25	19	19	29	25	23
HH food stamps income	3	3	2	2	3	3
Other source or tie	6	7	10	5	6	8
None (living on < \$4 per day)	5	7	6	7	10	10

*Source:* Authors' calculations based on the March Supplement to the Current Population Survey. Sample consists of all households in which at least one prime-age man with "low labor-force attachment" resided, defined as a man who worked no more than 13 weeks in the reference year. Households with imputed sources of income are excluded. Disability-related benefits are not fully identifiable until 1988; food stamps benefits are not identifiable until 1992; as a result, we consider the years 1992-2017. The top sub-panels record average levels of the man's household's yearly income in 2017 dollars, rounded to the nearest hundred and broken down by income source. The bottom sub-panels record the frequency with which each source of earnings accounts for the largest share of total household income. Extremely poor households which subsist on less than \$4 per day (with a square-root equivalence scale to adjust for household size), are classified as having no maximal source of income. See main text and Appendix for further detail.

Table 3

**Assessing the Effect of Greater Receipt of Social Security Disability Insurance on the Secular Decline in Male Labor-Force Participation**

		Dropouts			HS Graduates		
		25-34	35-44	45-54	25-34	35-44	45-54
SSDI	1975-84	0.030	0.046	0.076	0.009	0.014	0.027
Participation	2008-17	0.022	0.039	0.088	0.022	0.030	0.059
Rate	Change	-0.008	-0.007	0.012	0.013	0.016	0.032
LF Non-	1975-84	0.102	0.106	0.153	0.036	0.034	0.070
Participation	2008-17	0.182	0.175	0.304	0.120	0.122	0.171
Rate	Change	0.080	0.069	0.151	0.084	0.088	0.101
SSDI change / OLF change		-0.100	-0.101	0.079	0.155	0.182	0.317
Conservative upper-bound contribution of SSDI growth to non-participation growth		-4%	-4%	6%	12%	15%	25%

*Source:* Social Security Administration published reports (Social Security Disability Insurance information) and the March Supplement to the Current Population Survey (labor-force information). Decadal averages are used to reduce sampling error. (Highly) conservative upper bounds equal 0.4 times the ratio of SSDI growth to non-participation growth when SSDI growth is negative, and 0.8 times the ratio of SSDI growth to non-participation growth when SSDI growth is positive. See main text for a discussion of these upper-bound multipliers.

Table 4

**Males Living in Selected Family Arrangements by Race, Education and Age, 1970-2015**

(shares)

Race	Education	Age	Currently Married				Living with Parent			
			1970	1985	2000	2015	1970	1985	2000	2015
Whites	Dropouts	25-34	0.81	0.61	0.48	0.37	0.12	0.18	0.22	0.28
		35-44	0.86	0.75	0.59	0.51	0.06	0.09	0.14	0.17
		45-54	0.86	0.79	0.66	0.49	0.04	0.05	0.06	0.12
	HS Grads	25-34	0.83	0.63	0.53	0.38	0.10	0.14	0.16	0.25
		35-44	0.90	0.79	0.65	0.58	0.04	0.05	0.10	0.13
		45-54	0.89	0.84	0.74	0.61	0.03	0.03	0.05	0.09
Blacks	Dropouts	25-34	0.65	0.31	0.23	0.14	0.17	0.36	0.40	0.47
		35-44	0.66	0.50	0.32	0.27	0.09	0.16	0.25	0.29
		45-54	0.70	0.58	0.44	0.31	0.02	0.07	0.13	0.20
	HS Grads	25-34	0.70	0.42	0.32	0.17	0.13	0.26	0.31	0.41
		35-44	0.70	0.58	0.45	0.38	0.08	0.10	0.18	0.22
		45-54	0.75	0.67	0.53	0.46	0.06	0.06	0.11	0.12

Source: Authors' calculations based on the March Supplement to the Current Population Survey. Statistics were calculated in 5-year windows around the specified years: thus 1970 refers to 1968-72; 1985 refers to 1983-87; 2000 refers to 1998-2002; 2015 refers to 2013-17.

Table 5

**Family Structure Decompositions of Changes in the Male Labor-Force Participation Rate by Race, Education and Age**

(percentage point changes between 1970 and 2015)

Race	Education	Age	Total Change	Between	Within			within married contribution
					w/ Parent	Unmarried	Married	
All Men	Dropouts	25-34	-13.5	-4.7	-3.9	-1.4	-3.5	26%
		35-44	-11.0	-3.7	-2.1	-1.8	-3.5	32%
		45-54	-21.0	-5.5	-2.4	-4.7	-8.4	40%
	HS grads	25-34	-11.2	-3.5	-3.6	-1.3	-2.8	25%
		35-44	-11.0	-3.3	-2.2	-1.7	-3.9	35%
		45-54	-14.8	-3.6	-1.7	-3.8	-5.7	39%
Whites	Dropouts	25-34	-21.2	-6.3	-5.3	-3.7	-6.0	28%
		35-44	-23.3	-5.8	-3.5	-4.5	-9.5	41%
		45-54	-33.1	-6.5	-3.1	-8.6	-14.9	45%
	HS grads	25-34	-10.0	-2.8	-3.1	-1.5	-2.7	27%
		35-44	-10.8	-2.9	-2.4	-1.6	-3.9	36%
		45-54	-13.6	-3.2	-1.6	-3.5	-5.3	39%
Blacks	Dropouts	25-34	-31.6	-11.8	-9.9	-6.2	-3.6	11%
		35-44	-27.5	-8.1	-8.1	-6.5	-4.8	17%
		45-54	-35.5	-10.0	-4.4	-11.3	-9.8	28%
	HS grads	25-34	-18.8	-5.3	-7.0	-2.5	-4.0	21%
		35-44	-15.2	-4.2	-2.8	-3.4	-4.8	32%
		45-54	-20.5	-4.8	-2.2	-7.5	-5.9	29%

Source: Authors' calculations based on the March Supplement to the Current Population Survey. See online Appendix for detail on how the within/between decomposition was executed. LFP rates were measured in 5-year windows around the beginning and endpoints: thus 1970 refers to 1968-72; 2015 refers to 2013-2017.