

NBER WORKING PAPER SERIES

FINANCIAL CYCLES WITH HETEROGENEOUS INTERMEDIARIES

Nuno Coimbra  
Hélène Rey

Working Paper 23245  
<http://www.nber.org/papers/w23245>

NATIONAL BUREAU OF ECONOMIC RESEARCH  
1050 Massachusetts Avenue  
Cambridge, MA 02138  
March 2017

We are grateful to seminar participants at Harvard University, MIT Sloan, Chicago Booth, the Institute of International Economics in Stockholm, the New York Federal Reserve Bank, the Bank of England, the 2016 Macroeconomic Policy Conference at the Sverige Riksbank, the 2016 Banque de France Conference, the Swiss National Bank, the London School of Economics, the 2016 Annual Research Conference of the Bank for International Settlements, the Paris School of Economics, the 2016 Rennes Macroeconomics Conference, London Business School and to Thomas Philippon, Xavier Ragot, Enrico Perotti, Ralph Koijen, Benoit Mojon, Edouard Challe, Mark Gertler, Hyun Shin, Matteo Maggiori, Nobuhiro Kiyotaki, Alp Simsek, Doug Diamond, Jose Scheinkman, Alberto Martin, Roberto Chang, Leonardo Gambacorta, Torsten Persson, Per Krusell, Frederic Malherbe, Rafael Repullo and Mike Woodford for comments. We thank Rustam Jamilov for excellent research assistance. Rey thanks the ERC for financial support (ERC Advanced Grant 695722). The views expressed herein are those of the authors and do not necessarily reflect the views of the National Bureau of Economic Research.

NBER working papers are circulated for discussion and comment purposes. They have not been peer-reviewed or been subject to the review by the NBER Board of Directors that accompanies official NBER publications.

© 2017 by Nuno Coimbra and Hélène Rey. All rights reserved. Short sections of text, not to exceed two paragraphs, may be quoted without explicit permission provided that full credit, including © notice, is given to the source.

Financial Cycles with Heterogeneous Intermediaries  
Nuno Coimbra and H  l  ne Rey  
NBER Working Paper No. 23245  
March 2017  
JEL No. E32,E44,G21

**ABSTRACT**

This paper develops a dynamic macroeconomic model with heterogeneous financial intermediaries and endogenous entry. It features time-varying endogenous macroeconomic risk that arises from the risk-shifting behaviour of financial intermediaries combined with entry and exit. We show that when interest rates are high, a decrease in interest rates stimulates investment and increases financial stability. In contrast, when interest rates are low, further stimulus can increase systemic risk and induce a fall in the risk premium through increased risk-shifting. In this case, the monetary authority faces a trade-off between stimulating the economy and financial stability.

Nuno Coimbra  
Paris School of Economics  
CES-Centre d'Economie de la Sorbonne  
106-112 boulevard de l'H  pital 75647  
Paris cedex 13, FRANCE  
nuno.coimbra@psemail.eu

H  l  ne Rey  
London Business School  
Regents Park  
London NW1 4SA  
UNITED KINGDOM  
and NBER  
hrey@london.edu

# 1 Introduction

The recent crisis has called into question our modeling of the macroeconomy and of the role of financial intermediaries. It has become more obvious that the financial sector, far from being a veil, plays a key role in the transmission of shocks and in driving fluctuations in aggregate risk. The precise mechanisms by which this happens are to a large extent still unknown. In particular, the underlying forces driving endogenous systemic risk and even a precise and empirically relevant definition of systemic risk remains elusive. This is where our paper attempts to make a contribution.

Macroeconomic models have long recognized the importance of capital market frictions for the transmission and the amplification of shocks. In the literature featuring a collateral constraint (see e.g. Bernanke and Gertler (1989), Kiyotaki and Moore (1997)), agency costs between borrowers and lenders introduce a wedge between the opportunity cost of internal finance and the cost of external finance: the external finance premium. Any shock lowering the net worth of firms, households or banks can cause adverse selection and moral hazard problems to worsen, as the borrowers stake in the investment project varies, increasing the size of the external finance premium. As a result this leads to a decrease in lending and a fall in economic activity. Other recent models where financial market frictions play a key amplifying role are Mendoza (2010), Mendoza and Smith (2014), Gertler and Kiyotaki (2015), Gertler and Karadi (2011) who use a collateral constraint<sup>1</sup>; Brunnermeier and Sannikov (2014) and He and Krishnamurthy (2013) where an intermediary cannot raise more than a fixed amount of equity; Adrian and Shin (2010), Coimbra (2016) and Adrian and Boyarchenko (2015) where intermediaries face Value-at-Risk constraints. Some papers discuss endogenous fluctuations in macroeconomic risk. In Brunnermeier and Sannikov (2014), for example, the economy may spend time in suboptimal low asset price and low investment states. As a consequence of the existence of such paths, macroeconomic risk may increase and will do so in periods where asset prices tend to be depressed and financial intermediaries underinvest. Similarly, He and Krishnamurthy (2014) develop a model to quantify systemic risk, defined as the risk that financial constraints bind in the future.

This paper develops a simple general equilibrium model of monetary policy transmission with a risk-taking channel, in which systemic risk increases in periods of low volatility, low interest rate, high investment and compressed spreads, as observed during the pre-crisis period between 2003 and 2007. Unlike most of the previous literature, systemic risk is defined in terms of default risk of financial intermediaries and not

---

<sup>1</sup>See also Gertler et al. (2012), Curdia and Woodford (2010), Farhi and Werning (2016), Aoki et al. (2016).

simply the risk that financial constraints bind in the future. We provide a precise definition of systemic risk as a state that would trigger generalized solvency issues in the financial sector. In the model, financial crises tend to happen after periods of credit booms, a pattern observed in the data as documented by Gorton (1988) and Jorda et al. (2011). This is achieved by building a novel framework with a moral hazard friction due to limited liability that leads to risk-shifting in a model with a continuum of financial intermediaries heterogeneous in their Value-at-Risk constraints. The literature (for example Gertler and Kiyotaki (2015), Brunnermeier and Sannikov (2014) and He and Krishnamurthy (2013)) has traditionally modelled the financial sector as one representative bank, so that heterogeneity in financial intermediaries characteristics plays no role and information on the time variations of the cross-section of balance sheet data cannot be exploited. An important exception is Boissay et al. (2016) which feature intermediaries heterogeneous in their abilities. In their set up, low ability intermediaries become active in boom times and adverse selection plays an important role in credit collapses.<sup>2</sup>

Value-at-Risk constraints are realistic features of the regulatory environment; they are embedded in Basel II and Basel III. They also reflect the practice of internal risk management in financial intermediaries, whether as a whole or for specific business lines within financial firms.<sup>3</sup> Their heterogeneity may reflect heterogeneous risk attitudes by the boards of financial intermediaries or different implementations of regulatory constraints across institutions. Like us, Fostel and Geanakoplos (2012) emphasize financial frictions and heterogeneity in investors to generate fluctuations in asset prices. Furthermore, we assume deposit guarantees which are a widespread institutional feature.<sup>4</sup> The importance of risk-shifting by financial intermediaries for asset prices has been highlighted in a number of papers. Allen and Gale (2000) have shown that current and future credit expansion can increase risk shifting and create bubbles in asset markets, while Nuño and Thomas (2017) show that the presence of risk-shifting creates a link

---

<sup>2</sup>Their modelling strategy and ours are however very different and so are the implications of the two models. In particular in their set-up there is a backward bending demand curve for loans; not in ours. Other major differences are that they do not model monetary policy, nor do they model the cross section of banks leverage, which is a key variable for us. Another recent attempt to introduce heterogeneity using an evolutionary approach is Korinek and Nowak (2017). Kojien and Yogo (2019) develop an empirical asset pricing model with heterogeneity across investors.

<sup>3</sup>Value-at-Risk constraints to model financial intermediaries have been used in a number of papers (see for example Danielsson, Shin and Zigrand (2010), Adrian and Shin (2010), Adrian and Shin (2014) who provide microfoundations and Adrian and Boyarchenko (2015)).

<sup>4</sup>We are therefore abstracting from the important literature on bank runs (see e.g. Diamond and Dybvig (1983), Diamond and Kashyap (2016), Gertler and Kiyotaki (2015), Angeloni and Faia (2013)). Kareken and Wallace (1978) point out that an important side effect of deposit insurance is excessive risk taking.

between asset prices and bank leverage. Malherbe (2015) also presents a model with excessive build-up of risk during economic booms as the lending of an individual bank exerts a negative externality on other banks. In Martinez-Miera and Suarez (2014), bankers determine their exposure to systemic shocks by trading-off the risk-shifting gains due to limited liability with the value of preserving their capital after a systemic shock.

Different levels of leverage across financial intermediaries and the presence of risk-shifting play an important role in our model. They jointly generate heterogeneous willingness to pay for risky assets and therefore a link between aggregate risk-taking and the distribution of leverage. Our model provides therefore a different and complementary view of financial fragility from Gennaioli et al. (2012). In their model, excess risk-taking comes from a thought process bias (“local thinking”): bankers neglect to take into consideration the probability that some improbable risk materializes. Finally, although our modeling strategy is very different, our paper is related to the growing literature on the risk taking channel of monetary policy (Borio and Zhu (2012), Bruno and Shin (2015), DellAriccia et al. (2014) and Acharya and Plantin (2016)). Challe et al. (2013) describe a two-period model with heterogeneous intermediaries and limited liability which, like ours, features a link between interest rates and systemic risk.<sup>5</sup>

One important contribution of our paper is to analyse the joint dynamics of economics and financial variables in a model with risk-shifting and a pool of heterogeneous intermediaries. This generates endogenous macroeconomic risk fluctuations and movements in the risk premium. We relate the macroeconomic dynamics to the cross sectional shifts in the distribution of leverage of financial intermediaries. Another contribution is to provide an intuitive and clearly defined measure of systemic risk within a standard dynamic macroeconomic model. We now describe our model briefly.

Financial intermediaries collect deposits from households and invest and hold shares in the aggregate capital stock, which provides a risky return. Realistically, financial intermediaries have limited liability, which introduces a risk-shifting motive for investment and mispricing of risk. Deposits are guaranteed by the government. Intermediaries with a looser Value-at-Risk constraint have a higher option value of default, which will generate pricing effects of entry and exit in risky financial markets. Both the aggregate capital stock and the risk premium of the economy are determined by an *extensive margin* (which financial intermediaries lever) and an *intensive margin* (how

---

<sup>5</sup>They focus on portfolio choice and heterogeneity in equity of intermediaries while we emphasize aggregate uncertainty and differences in risk-taking. Another important difference is that, unlike them, we embed the financial sector in an otherwise standard DSGE model.

much does each lever). This is a key novel feature of the model. Having variation in the intensive and the extensive margins generates both movements in aggregate leverage and asset pricing implications which are unusual in our models but seem to bear some resemblance with reality. Contemporaneously, output and consumption vary monotonically with the interest rate while the underlying financial structure (and systemic risk) is non-monotonic. We explain here the basic economic intuition behind the workings of the model.

Our model features an endogenous non-linearity in the trade-off between monetary policy (which affects the funding costs of intermediaries) and financial stability. When the level of interest rates is high, a fall in interest rates leads to entry of less risk-taking intermediaries into the market for risky projects. The average intermediary is then less risky, so a fall in interest rates (i.e. a monetary expansion) has the effect of reducing systemic risk and expanding the capital stock. There is no trade-off in this case between stimulating the economy and financial stability. However, when interest rates are very low, a monetary expansion leads to the exit of the least risk-taking active intermediaries, which are priced out of the market by a large increase in leverage of the more risk-taking ones. This increases systemic risk in the economy despite positive effects on the aggregate capital stock, which is always increasing with a fall in interest rates. For this region, the intensive margin growth in leverage dominates the extensive margin fall as interest rates are reduced. In other words, the most risk-taking intermediaries increase their leverage so much that they more than compensate for the exit of the least risk-taking ones. There seems to be a clear trade-off between stimulating the economy and financial stability. Stimulating the economy shifts the distribution of assets towards the more risk-taking intermediaries, which have a higher default risk and increases aggregate risk-shifting. Of course, the level of the interest rate is itself an outcome of the general equilibrium model and therefore a fixed point problem has to be solved. This non-monotonicity constitutes a substantial difference from the existing literature and is a robust mechanism coming from the interplay of the two margins. It provides a novel way to model the risk-taking channel of monetary policy analysed in Borio and Zhu (2012), Challe et al. (2013) and Bruno and Shin (2015). Recent empirical evidence on the risk-taking channel of monetary policy for loan books has been provided by Dell’Ariccia et al. (2013) on US data, Jimenez et al. (2014) and Morais et al. (2015), exploiting registry data on millions of loans of the Spanish and Mexican Central Banks respectively.

There are several important advantages of this novel set up to model financial intermediation. First, it takes seriously the risk-taking channel in general equilibrium and therefore allows the joint study of the usual expansionary effect of monetary policy - via a boost in investment - and of the macroeconomic financial stability risk, which is endogenous. Monetary policy is modeled as a reduction in the real funding costs of

financial intermediaries<sup>6</sup> and an extension of the model featuring nominal variables is left for future work. Second, it is able to generate periods of low risk premium which coincide with periods of high endogenous macroeconomic risk. This happens when the market is dominated by more risk-taking intermediaries which also feature high levels of leverage. These periods also correspond to high levels of investment and inflated asset prices due to stronger risk-shifting motives. Thirdly, the model is crafted in a way such that the financial intermediation building block, although rich, can be easily inserted in a general equilibrium macroeconomic model. Fourthly, because the model introduces a simple way to model financial intermediary heterogeneity, it opens the door to a vast array of empirical tests based on microeconomic data on banks, shadow banks, asset managers, and so on<sup>7</sup>. Indeed the heterogeneity can be in principle matched in the data with actual companies or business lines within companies and with their leverage behaviours.

Section 2 of the paper describes the model. Section 3 presents the main results in partial equilibrium, thereby building intuition. Section 4 shows the general equilibrium results and the response to monetary policy shocks. Section 5 looks at some empirical evidence for the cross-sectional implications of the model. The case of financial crises with costly intermediary default is analyzed in section 6 and section 7 concludes.

## 2 The Model

The general equilibrium model is composed of a representative risk-averse household who faces an intertemporal consumption saving decision, a continuum of risk-neutral financial intermediaries, and a very simplified Central Bank and government. There are only aggregate shocks, in the form of productivity and monetary policy shocks. Given the heterogeneity in bank balance sheets that the model features, this will still lead to idiosyncratic risks of default in the intermediation sector.

### 2.1 Households and the production sector

The representative household has an infinite horizon and consumes a final good  $C_t^H$ . She finances her purchases using labour income  $W_t$  and returns from a savings portfolio. We assume that the household has a fixed labour supply and does not invest directly

---

<sup>6</sup>Any change in regulation that affects funding costs would have similar implications.

<sup>7</sup>Our model attempts to perform in macro-finance something similar to what Melitz (2003) has done in international trade by relating aggregate outcomes to underlying microeconomic heterogeneity. We are not aware of any other paper in the macro-finance literature that pursues a similar aim.

in the capital stock  $K_t$ .<sup>8</sup> It can either save using a one-to-one storage technology  $S_t^H$  and/or as deposit  $D_t^H$  with financial intermediaries at interest rate  $r_t^D$ . The return on deposits  $R_t^D \equiv 1 + r_t^D$  is risk-free and guaranteed by the government. Intermediaries use deposits, along with inside equity  $\omega_t$ , to invest in capital and storage. In Section 4 we will introduce monetary policy as a source of wholesale funding. Monetary policy will therefore affect the weighted average cost of funds for intermediaries.

The production function combines labour and capital in a typical Cobb-Douglas function. Since labour supply is fixed, we normalize it to 1. Output  $Y_t$  is produced according to the following technology:

$$Y_t = Z_t K_{t-1}^\theta \quad (1)$$

$$\log Z_t = \rho^z \log Z_{t-1} + \varepsilon_t^z \quad (2)$$

$$\varepsilon_t^z \sim N(0, \sigma_z) \quad (3)$$

where  $Z_t$  represents total factor productivity.  $\theta$  is the capital share, while  $\varepsilon_t^z$  is the shock to the log of exogenous productivity with persistence  $\rho^z$  and standard deviation  $\sigma_z$ . Let  $F(\varepsilon_t^z)$  be the cumulative distribution function (cdf) of  $\exp(\varepsilon_t^z)$ , a notation which will be convenient later. Firm maximization implies that wages  $W_t = (1 - \theta)Z_t K_{t-1}^{\theta-1}$  and returns on a unit of capital  $R_t^K = \theta Z_t K_{t-1}^{\theta-1} + (1 - \delta)$ .

The household program can be written as follows:

$$\max_{\{C_t, S_t^H, D_t^H\}_{t=0}^\infty} E_0 \sum_{t=0}^{\infty} \beta^t u(C_t^H) \quad \text{s.t.} \quad (4)$$

$$C_t^H + D_t^H + S_t^H = R_t^D D_{t-1}^H + S_{t-1}^H + W_t - T_t \quad \forall t \quad (5)$$

where  $\beta$  is the subjective discount factor and  $u(\cdot)$  the period utility function.  $T_t$  are lump sum taxes and  $S_t^H$  are savings invested in the one-to-one storage technology. Note that the return on deposits is risk-free despite the possibility of intermediary default. The reason is that deposits are guaranteed by the government, which may need to raise taxes  $T_t$  in the event intermediaries cannot cover their liabilities. Households understand that the higher the leverage of intermediaries, the more likely it is for them

---

<sup>8</sup>Given households are risk-averse and intermediaries are risk neutral (and engage in risk-shifting), relaxing the assumption households cannot invest directly would make no difference in equilibrium unless all intermediaries are active and constrained. There are also little hedging properties in the asset, since the correlation of the shock to returns with wage income is positive. In the numerical exercises, it is never the case that all intermediaries are active and constrained, so to simplify notation and clarify the household problem we assume directly that only intermediaries can invest in the risky capital stock.



to be taxed in the future. However, they do not internalize this in their individual portfolio decisions since each household cannot by itself change aggregate deposits nor the expectation of future taxes.

The return on storage is also risk-free, which implies that households will be indifferent between deposits and storage if and only if  $R_t^D = 1$ . Therefore, they will not save in the form of deposits if  $R_t^D < 1$  and will not invest in storage if  $R_t^D > 1$ . In equilibrium, the deposits rate will be bounded from below by the unity return on storage, implying that  $R_t^D \geq 1$ . In the case  $R_t^D = 1$ , the deposit quantity will be given by financial intermediary demand, with the remaining household savings being allocated to storage.

## 2.2 Financial intermediaries

The financial sector is composed of two-period financial intermediaries which fund themselves through inside equity and household deposits<sup>9</sup>. They use these funds to invest in the aggregate risky capital stock and/or in the riskless one-to-one storage technology. They benefit from limited liability. Intermediaries are risk neutral and maximize expected second period consumption subject to a Value-at-Risk constraint. To capture the diversity of risk attitudes among financial intermediaries, we assume that they are heterogeneous in  $\alpha^i$ , the maximal probability their return on equity is negative.  $\alpha^i$  is exogenously given and the key parameter in the VaR constraint. This probability varies across intermediaries and is continuously distributed according to the measure  $G(\alpha^i)$  with  $\alpha^i \in [\underline{\alpha}, \bar{\alpha}]$ .

The balance sheet of intermediary  $i$  at the end of period  $t$  is as follows:

Assets	Liabilities
$k_{it}$	$\omega_t^i$
$s_{it}$	$d_{it}$

where  $k_{it}$  are the shares of the aggregate capital stock held by intermediary  $i$ ,  $s_{it}$  the amount of storage held,  $d_{it}$  the deposit amount contracted at interest rate  $r_t^D$ , and  $\omega_t^i$  the inside equity. At the beginning of the next period,  $R_{t+1}^K$  is revealed and the net cash flow  $\pi_{i,t+1}$  is:

$$\pi_{i,t+1} = R_{t+1}^K k_{it} + s_{it} - R_t^D d_{it} \tag{6}$$

---

<sup>9</sup>We will extend the funding options to include wholesale funding, whose cost is influenced by monetary policy, in section 4. By assumption the economy does not feature an interbank market or other funding possibilities.

### 2.2.1 Value-at-Risk constraint

Financial intermediaries are assumed to be constrained by a Value-at-Risk condition. This condition imposes that intermediary  $i$  invests in such a way that the probability its return on equity is negative must be smaller than an exogenous intermediary-specific parameter  $\alpha^i$ .<sup>10</sup> The VaR constraint for intermediary  $i$  can then be written as:

$$\Pr(\pi_{i,t+1} < \omega_t^i) \leq \alpha^i \quad (7)$$

The probability that the net cash flow is smaller than starting equity must be less or equal than  $\alpha^i$ . This constraint follows the spirit of the Basel Agreements, which aim at limiting downside risk and preserving an equity cushion. Furthermore, Value-at-Risk techniques are used by banks and other financial intermediaries (for example asset managers) to manage risk internally. When binding, it also has the property of generating procyclical leverage, which can be observed in the data for some intermediaries as described in Geanakoplos (2011) and Adrian and Shin (2014) when equity is measured at book value. Using a panel of European and US commercial and investment banks Kalemli-Ozcan et al. (2012) provide evidence of procyclical leverage but also emphasize important cross-sectional variations across types of intermediaries.

In Figure (5) we also show that leverage behaves quite differently in the cross-section. Heterogeneity in the parameter of the Value-at-Risk constraint can be rationalized in different ways. It could be understood as reflecting differentiated preferences for risk-taking or differentiated implementation of regulatory requirements. For example, the Basel Committee undertook a review of the consistency of risk weights used when calculating how much capital global banks put aside for precisely defined portfolio. When given a diversified test portfolio the global banks surveyed produced a wide range of results in terms of modeled Value-at-Risk and gave answers ranging from 13 million to 33 million euros in terms of capital requirement with a median of about 18 million (see Basel Committee on Banking Supervision (2013) p.52). Some of the differences are due to different models used, some to different discretionary requirements by supervisors and some to different risk appetites, as "Basel standards deliberately allow banks and supervisors some flexibility in measuring risks in order to accommodate for differences in risk appetite and local practices" (p.7).

---

<sup>10</sup>Alternatively we could posit that the threshold is at a calibrated non-zero return on equity. There is a mapping between the distribution  $G(\alpha^i)$  and such a threshold, so for any value we could find a  $\tilde{G}(\alpha^i)$  that would make the two specifications equivalent given expected returns. We decide to use the current one as it reduces the parameter space.

### 2.2.2 Intermediary investment problem

We assume that our risk neutral intermediaries live for two periods, receiving an endowment of equity  $\omega_t^i = \omega$  in the first and consuming their net worth in the second, if it is positive. This assumption of constant equity is a simplifying assumption<sup>11</sup>, but in the data, book value equity is indeed very sticky. We show in Figure (10) in the appendix the almost one-for-one correlation between changes in the size of debt and assets at book value for a sample of banks, as well as the stickiness of book value equity. Balance sheet expansions and contractions tend to be done through changes in debt and not through movements in equity. Other papers in the literature, which feature a representative intermediary, assume that a maximum amount of equity can be raised (Brunnermeier and Sannikov (2014), He and Krishnamurthy (2014)) or that dividend payouts are costly as in Jermann and Quadrini (2012).

Net worth consumed by financial intermediary  $i$  is denoted by  $c_{it}$ .<sup>12</sup> When the net cash flow is negative,  $c_{it} = 0$  and the government repays depositors as it upholds deposit insurance. This is a pure transfer, funded by a lump sum tax on households. Hence, in our model, households are forward-looking and do intertemporal optimization while most of the action in the intermediation sector comes from heterogeneous leverage and risk-taking in the cross-section. This two-period modeling choice is made for simplicity<sup>13</sup> and allows us to highlight the role of different leverage responses across financial intermediaries.

Each intermediary will have to decide whether it participates or not in the market for risky assets or invests in the storage technology (*participating intermediary* versus *non-participating intermediary*) and, conditionally on participating whether it uses deposits to lever up (*risky intermediary*) or just invests its own equity (*safe intermediary*).

Intermediaries are assumed to be (constrained) risk-neutral price takers, operating in a competitive environment. Each maximizes consumption over the next period by picking  $k_{it}$  (investment in risky assets) and  $s_{it}$  (investment in the storage technology), under the VaR constraint, while taking interest rates on deposits  $r_t^D$  and asset return

---

<sup>11</sup>Indeed we make the opposite assumption of the literature which often assumes a representative bank and focuses on the dynamics of net worth (see e.g. Gertler and Kiyotaki (2015)). In contrast, we assume constant equity but allow for heterogeneous intermediaries.

<sup>12</sup>When intermediary  $j$  is inactive, then  $c_{jt} = \omega$  as the return of the storage technology is one.

<sup>13</sup>Other papers in the literature have used related assumptions, for example exogenous death of intermediaries in Gertler and Kiyotaki (2015) or difference in impatience parameters in Brunnermeier and Sannikov (2014).

distributions  $R_{t+1}^K(\varepsilon)$  as given. The program of each intermediary  $i$  is given by:

$$V_{it} = \max \mathbb{E}_t(c_{i,t+1}) \quad (8)$$

$$\text{s.t. } \Pr(\pi_{i,t+1} < \omega_t^i) \leq \alpha^i \quad (9)$$

$$k_{it} + s_{it} = \omega_t^i + d_{it} \quad (10)$$

$$c_{i,t+1} = \max(0, \pi_{i,t+1}) \quad (11)$$

$$\pi_{i,t+1} = R_{t+1}^K k_{it} + s_{it} - R_t^D d_{it}$$

where  $\alpha^i$  is the Value-at-Risk threshold (the maximum probability of not being able to repay stakeholders fully) and  $\pi_{i,t+1}$  the net cash flow.

Intermediaries can also choose to stay out of risky financial markets and not participate. In this case, they have the outside option of investing all their equity in the storage technology and collect it at the beginning of the next period. The value function of a non-participating intermediary investing in the outside option is:

$$V_{it}^O = V^O = \omega \quad (12)$$

### 2.2.3 Limited liability

The presence of limited liability truncates the profit function at zero, generating an option value of default that intermediaries can exploit. For a given expected value of returns, a higher variance increases the option value of default as intermediaries benefit from the upside but do not suffer from the downside. For a given choice of  $k_{it}$  and  $d_{it}$  we have that:

$$\mathbb{E}_t[\max(0, \pi_{i,t+1})] \geq \mathbb{E}_t[\pi_{i,t+1}] \quad (13)$$

with the inequality being strict whenever the probability of default is strictly positive. Deposit insurance transfers  $t_t^i$  happen when net cash flow is negative and are given by:

$$t_{t+1}^i = \max(0, -\pi_{t+1}) \quad (14)$$

The max operator selects the appropriate case depending on whether intermediary  $i$  can repay its liabilities or not. If it can, then deposits repayments are lower than return on assets and deposit insurance transfers are zero. Total intermediary consumption  $C_t^I$  and aggregate transfers/taxes  $T_t$  are given by integrating over the mass of intermediaries:

$$C_t^I = \int c_{it} dG(\alpha^i) \quad (15)$$

$$T_t = \int t_t^i dG(\alpha^i) \quad (16)$$

For now we assume default is costless in the sense that there is no deadweight loss when the government is required to pay deposit insurance. In section 6, we will drop the assumption of costless default by having a more general setup that allows for a lower return on assets held by distressed intermediaries.

### 2.3 Investment strategies and financial market equilibrium

Financial intermediaries are price takers, therefore the decision of each one depends only on the expected return on assets<sup>14</sup> and the cost of liabilities. Since the mass of each intermediary is zero, individual balance sheet size does not affect returns on the aggregate capital stock. Intermediary  $i$  will be a *participating intermediary* in the market for risky assets whenever  $V_{it} \geq V^O$ . This condition determines entry and exit into the market for risky capital endogenously.

There is however another important endogenous decision. Intermediaries which participate in the market for risky assets have to choose whether to lever up and, if they do, by how much. We will refer to the decision to lever up or not, i.e. to enter the market for deposits as the *extensive margin*. We will refer to the decision regarding how much to lever up as the *intensive margin*. Financial intermediaries which lever up are called *risky* intermediaries. Financial intermediaries which participate in the market for risky capital but do not lever up are called *safe* intermediaries.

**Proposition 2.1** *When  $\mathbb{E}[R_{t+1}^K] \geq 1$ , participating intermediary  $i$  will either lever up to its Value-at-Risk constraint or not raise deposits at all.*

Proof: See Appendix B.

Proposition 2.1 states that if the return to risky capital is higher in expectation than the return on the storage technology then whenever an intermediary decides to lever up, it will do so up to its Value-at-Risk constraint and will not invest in storage. Hence all *risky* intermediaries will be operating at their constraint.

When expected return on risky capital is smaller than return on storage:  $\mathbb{E}[R_{t+1}^K] < 1$ , it might be the case that storage is preferred to capital in equilibrium by some intermediaries. We then have equilibria in which some intermediaries invest in storage and possibly some of the most risk-taking ones leverage up a lot taking advantage of the option value of default. In what follows we focus on cases where  $\mathbb{E}[R_{t+1}^K] \geq 1$  which is always the case in our simulations.

---

<sup>14</sup>Taking into account limited liability.

### 2.3.1 Intensive margin and investment of risky intermediaries

Let  $Z_{t+1}^e \equiv \mathbb{E}_t(Z_{t+1}) = Z_t^{\theta^z}$  where  $Z_t$  is Total Factor Productivity. For a participating intermediary  $i$  deciding to lever up, the VaR condition will bind (see Proposition 2.1):

$$\Pr [\pi_{t+1}^i \leq \omega] \leq \alpha^i \quad (17)$$

Hence, after some straightforward algebra, we obtain the following:

$$\Pr \left[ e^{\varepsilon_{t+1}^z} \leq \frac{r_t^D + \delta - \frac{\omega}{k_{it}} r_t^D}{\theta Z_t^e K_t^{\theta-1}} \right] = \alpha^i \quad (18)$$

The leverage  $\lambda_{it}$  of an active intermediary is given by:

$$\lambda_{it} \equiv \frac{k_{it}}{\omega} = \frac{r_t^D}{r_t^D - \theta Z_{t+1}^e K_t^{\theta-1} F^{-1}(\alpha^i) + \delta} \quad (19)$$

where we defined leverage as assets over equity and  $F^{-1}(\alpha^i)$  as the inverse cdf of the technology shock  $e^{\varepsilon_{t+1}^z}$  evaluated at probability  $\alpha^i$ .

**Proposition 2.2** *For an intermediary  $i$ , the leverage  $\lambda_{it}$  has the following properties: it is increasing in  $\alpha^i$ , increasing in expected marginal productivity of capital  $\theta Z_{t+1}^e K_t^{\theta-1}$ . Furthermore,  $\frac{\partial \lambda_{it}}{\partial r_t^D} < 0$ ,  $\frac{\partial^2 \lambda_{it}}{\partial (r_t^D)^2} > 0$  and  $\frac{\partial^2 \lambda_{it}}{\partial r_t^D \partial \alpha^i} < 0$ .*

Proof: Immediate from Equation (19) and given the monotonicity of the cdf and the shape of  $F^{-1}(\cdot)$ .

Proposition 2.2 implies that, from the perspective of an individual intermediary (i.e. absent general equilibrium effects on  $K_t$ ), leverage will be decreasing in  $r_t^D$ . A fall in the interest rate will lead to a larger increase, the lower is the level of  $r_t^D$  to begin with. Moreover, the more risk-taking is the intermediary, the larger the increase in leverage following a fall in interest rates. Generally, intermediary leverage will also be decreasing in the volatility of productivity shocks  $\sigma_z$ . This will be true whenever  $F(\alpha_i)$  is increasing in  $\sigma_z$ , implying realistically that the probability of a negative return on equity is (ceteris paribus) increasing in the volatility of returns.

### 2.3.2 Extensive margin and endogenous leverage

We now focus on the *extensive margin* that is to say whether intermediaries who participate in risky capital markets choose to lever up using deposits or not.<sup>15</sup>

---

<sup>15</sup>Remember that intermediaries can also decide not to invest in risky capital markets and instead to use the storage technology. If they do so, then their value function is  $V^O = \omega$  given the unit return to storage.

Let  $V^L$  denote the value function of *risky* intermediaries who decide to lever up using deposits and  $V^N$  the value function of the *safe* ones who only invest their equity in the risky capital stock. We denote by  $\mathbb{E}_t^i$  the expectation of a financial intermediary taking into account limited liability (expectation truncated at zero).

$$V_{it}^L = \mathbb{E}_t^i [R_{t+1}^K k_{it} - R_t^D d_{it}] \quad (20)$$

$$V_{it}^N = \mathbb{E}_t [R_{t+1}^K] k_{it}^N + \omega - k_{it}^N \quad (21)$$

with  $k_{it}^N \in [0, \omega]$ . Since there is no risk of defaulting on deposits if you have none, there is no option value of default for non-levered intermediaries. This  $N$  group includes intermediaries who invest all their equity in capital markets ( $k_{it}^N = \omega$ ) and intermediaries who do so only partially. This occurs only if the intermediary has a sufficiently tight VaR constraint.

We can then use the condition  $V_{it}^L = V_{it}^N$  to find the cutoff value  $\alpha_t^L = \alpha_t^j$  for which intermediary  $j$  is indifferent between leveraging up or not. Above  $\alpha_t^L$  (looser Value-at-Risk constraints), all intermediaries will be levered up to their respective constraints and do not invest in storage as shown in Proposition 2.1. For any levered intermediary  $i$ , we have:

$$\mathbb{E}_t^i [k_{it} R_{t+1}^K - R_t^D d_{it}] \geq \omega \mathbb{E}_t [R_{t+1}^K] \quad (22)$$

where the left hand side is the expected payoff on the assets of intermediary  $i$  and the right hand side is the expected payoff when it invests only its equity  $\omega$  in capital markets. Using the balance sheet equation  $k_{it} = d_{it} + \omega$ , we can substitute for deposits, which leads to the following condition:

$$\mathbb{E}_t^i [k_{it} (R_{t+1}^K - R_t^D) + R_t^D \omega] \geq \omega \mathbb{E}_t [R_{t+1}^K] \quad (23)$$

For the marginal intermediary  $j$ , equation (23) holds with equality:

$$\mathbb{E}_t^j [k_{jt} (R_{t+1}^K - R_t^D) + R_t^D \omega] = \omega \mathbb{E}_t [R_{t+1}^K] \quad (24)$$

Since all *risky* intermediaries will be at the constraint, we can combine equation (24) with equation (19) evaluated at the marginal intermediary (whose Value-at-Risk parameter is  $\alpha_t^L$ ). Moreover,  $\mathbb{E}_t [R_{t+1}^K]$  is a function of  $Z_{t+1}^e$  and  $K_t$  therefore equation (24) and equation (19) jointly define an implicit function of the threshold VaR parameter  $\alpha_t^L (= \alpha^j)$  with variables  $(r_t^D, Z_{t+1}^e, K_t)$ .

Hence we have the following result:

**Proposition 2.3** *There exists a cutoff value  $\alpha_t^L$  in the distribution of Value-at-Risk parameters such that all intermediaries with Value-at-Risk constraints looser than the cut-off will use deposits to leverage up to their constraint. All intermediaries with Value-at-Risk constraints tighter than the cut-off will not leverage up. Equations (24) and (19) define an implicit function of the threshold  $\alpha_t^L = A(r_t^D, Z_{t+1}^e, K_t)$ .*

### 2.3.3 Financial market equilibrium and aggregate supply curve of deposits.

To close the financial market equilibrium, we need to use the market clearing condition. The aggregate capital stock of the economy is equal to the total investment in risky projects by all intermediaries.

$$K_t = \int_{\underline{\alpha}}^{\bar{\alpha}} k_{it} dG(\alpha^i) \quad (25)$$

The integral has potentially three main blocks corresponding to *risky* levered intermediaries (above  $\alpha_t^L$ ), *safe* intermediaries who do not lever up but invest all their equity in the capital stock (between  $\alpha_t^N$  and  $\alpha_t^L$ ) and *safe* intermediaries who invest in the capital stock only a fraction (possibly zero) of their equity, the remainder being in storage (below  $\alpha_t^N$ ).

For non-levered *safe* intermediaries who invest all their equity in capital shares, the VaR constraint is given by  $F\left(\frac{\delta K_t^{1-\theta}}{\theta Z_{t+1}^e}\right) \leq \alpha^i$ . Let  $\alpha_t^N$  be the marginal intermediary for whom the constraint binds exactly.

$$F\left(\frac{\delta K_t^{1-\theta}}{\theta Z_{t+1}^e}\right) = \alpha_t^N \quad (26)$$

As long as  $\mathbb{E}[R_{t+1}^K \geq 1]$ , then for  $\alpha^i \in [\alpha_t^N, \alpha_t^L]$ , we have that  $k_{it} = \omega$ . On the other hand, intermediaries  $\alpha^i \in [\underline{\alpha}, \alpha_t^N]$  will invest up to their VaR constraint, leading to the following asset holdings:

$$k_{it} = \frac{\omega K_t^{1-\theta}}{\theta Z_{t+1}^e F^{-1}(\alpha^i) + 1 - \delta} \quad (27)$$

By plugging in the expressions for asset purchases  $k_{it}$  and using the expression for  $\alpha_t^N$  in equation (26), equation (25) defines an implicit function of  $(\alpha_t^L, r_t^D, Z_{t+1}^e, K_t)$ . Since  $Z_{t+1}^e$  is a function of a state variable and intermediaries are price takers, this financial market clearing function together with the implicit function<sup>16</sup>  $A(r_t^D, Z_{t+1}^e, K_t)$  pin down the aggregate capital stock  $K_t$  and the marginal levered intermediary  $\alpha_t^L$ , for a given

<sup>16</sup>Extensive margin, see Proposition (2.3).



deposit rate  $r_t^D$  and expected productivity  $Z_{t+1}^e$ . Together they determine the *aggregate supply curve for deposits* as a function of deposit rates and expected productivity. In general equilibrium, the deposit rate  $r_t^D$  will be determined in conjunction with the *aggregate deposit demand curve* coming from the recursive household problem described in section 4.

### 2.3.4 Systemic Risk

Importantly, we can now give a precise and intuitive definition of systemic risk in our model.

**Definition 1: Systemic crisis and systemic risk.** A systemic crisis can be defined as a state of the world where all levered intermediaries are unable to repay in full their stakeholders (deposits and equity). Systemic risk is defined by the probability of a systemic crisis occurring and can be directly measured by the cut-off  $\alpha_t^L$ .

Since all the risk in the model is aggregate, the probability of a systemic crisis is the probability that the least risk-taking levered intermediary is distressed, which is simply given by the cut-off  $\alpha_t^L$ .<sup>17</sup> Hence in the model, a fall in  $\alpha_t^L$  (meaning that the marginal entrant has a tighter Value-at-Risk constraint) is isomorphic to a decrease in systemic risk since it is equivalent to a decrease in the probability that the entire leveraged financial sector is distressed.

## 3 Partial equilibrium results

To provide a better illustration of the financial sector mechanics in the model, we first show a set of partial equilibrium results taking as given the deposit rate before moving on to general equilibrium in section 4 where the household problem will close the model. From now on we study the properties of the model using numerical simulations.<sup>18</sup>

We begin by analysing the distribution of intermediary leverage conditional on the deposit rates  $r_t^D$  and on expected productivity  $Z_{t+1}^e$ . In Figure (1), we show an example of the cross-sectional distribution of leverage for three different values of the deposit rate. The calibration of the model is discussed in more detail in section 4.

---

<sup>17</sup>We could consider equally easily that there is a systemic crisis when a certain proportion of levered financial intermediaries are unable to repay depositors or when a certain fraction of total assets is held by distressed intermediaries.

<sup>18</sup>We performed many different calibrations but only report a few. Results (available upon request) are qualitatively robust across simulations.

In the three cases, the area below each line<sup>19</sup> is proportional to the aggregate capital stock  $K_t = \int k_{it} dG(\alpha^i)$ . The vertical line showing a large drop in leverage identifies the marginal levered intermediary  $\alpha_t^L$ . To the left of the cutoff  $\alpha_t^L$ , intermediaries are not levered, which corresponds to the more conservative VaR constraints. They are *safe* intermediaries. To the right of the cutoff, leverage and balance sheet size  $k_{it}$  increase with  $\alpha^i$ . That is, the more risk-taking is the intermediary, the larger will be its balance sheet for a given  $r_t^D$  and  $Z_{t+1}^e$ . Those are *risky* intermediaries.

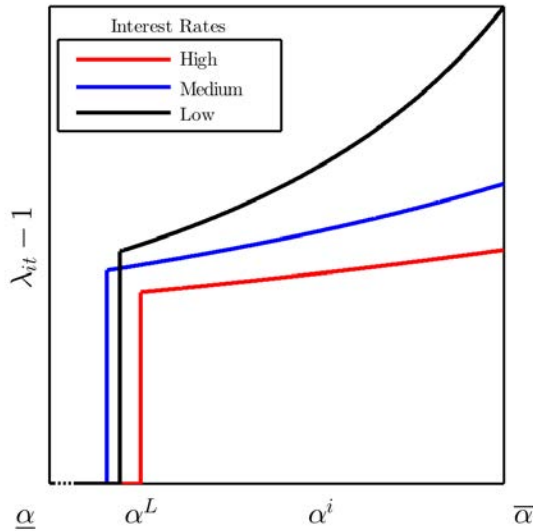


Figure 1: *Cross-sectional distribution of leverage  $\lambda_{it}$  as a function of the VaR parameter  $\alpha^i$*

The graph illustrates how the *intensive* and *extensive* margins affect leverage and the aggregate capital stock as the deposit interest rate changes. For the three cases displayed, as deposit rates fall, the *intensive* margin is always increasing. That is, for every intermediary that is levered up, the balance sheet grows when the cost of leverage falls. This is because a lower rate reduces the probability of default for a given balance sheet size, as a lower rate reduces the cost of liabilities that needs repaying next period. Intermediaries expand their balance sheet up to the new limit and levered intermediaries grow in size.

<sup>19</sup>Assuming a uniform distribution for  $G(\alpha^i)$  as in the baseline calibration. The details of the numerical method to solve the model are given in Appendix A. The fact that the financial bloc of the model is self contained taking as given the interest rate on deposits renders the solution simple. Our programmes are posted online on the websites of the authors.

Perhaps less intuitively, the effect on the *extensive* margin is ambiguous. One would expect that a fall in interest rate would lead to entry by more risk averse intermediaries. This is what happens when one goes from a high level of interest rate to a medium level of interest rate (the cutoff moves to the left). But this is no longer the case when one moves from a medium level of interest rate to a low level of interest rate: the cutoff moves to the right! Depending on the level of interest rates, a fall in interest rates can lead to more or fewer intermediaries choosing to lever up. We explain below this strong non-linearity of the effect of interest rates on systemic risk.

### 3.1 Non-linear trade-off between increased output and systemic risk

Following a fall in interest rates on deposits, intermediaries expand their asset holdings raising the aggregate capital stock. This lowers the return on risky asset holdings due to decreasing returns to capital in the aggregate. As seen in the graph above, we have very interesting asymmetries depending on the *level* of the interest rate.

When the interest rate level is high, the lower cost of liabilities reduces the probability of default for a given balance sheet size. Hence all intermediaries with a risky business model can lever more (*intensive* margin). In this case, there are also positive returns for the (previously) marginal intermediary due to the now lower cost of leverage. More intermediaries can lever up and enter the market for deposits (*extensive* margin), reducing the cutoff  $\alpha^L$ . In this case, the system becomes less risky since newly entered intermediaries have a stricter Value-at-Risk constraint. There is therefore no trade-off between using lower interest rates to stimulate investment and financial stability.

When the interest rate level is low, the *intensive* margin effect of a decrease in the interest rate is strong (see Proposition 2.2), leverage and investment are high and the curvature of the production function leads to a decrease in expected asset returns which is large enough to price out of the market the most risk averse intermediaries. The sign of the effect on  $\alpha^L$  depends on whether the fall in asset returns is stronger than the fall in the cost of liabilities. In the case of initially low interest rates, a further fall (in those rates) leads to fewer intermediaries choosing to lever up. Those intermediaries are larger and more risk-taking on average. There is therefore a clear trade-off between a lower interest rate (which corresponds in equilibrium to an expansionary monetary policy) and financial stability.

In order to gain some intuition, think of two polar cases. In the first, aggregate capital is infinitely elastic and return distributions  $R_{t+1}^K(\varepsilon)$  are fixed. In this case, a

decrease in the cost of funding can only lead to entry as the (previously) marginal intermediary will now make positive profits. The cutoff falls and there is no trade-off. In the second example, aggregate capital is fixed and returns adjust to clear the market<sup>20</sup>. If a fall in the cost of funding allows more leverage from the more risk-taking intermediaries, then it must be that the (previously) marginal intermediary no longer holds capital and returns fall enough to price him out. In this case, there is always a trade-off. In intermediate cases, the strength of the intensive margin effect is important as it determines the extent to which returns fall due to decreasing returns in the aggregate capital stock. The stronger is this effect (i.e. the more leverage increases following a fall in interest rates or the more *interest-elastic* the banks are), the more likely a trade-off will be present. As stated in Proposition 2.2, leverage increases faster as the interest rate falls (conditional on being levered). This means the *intensive* margin effect is particularly strong when interest rates are low.

Hence, as shown in Figure (1), when interest rates fall from high to medium to low, balance sheets become more heterogeneous in size and the difference between the most leveraged and the least leveraged intermediary rises. In the left panel of Figure (6) we report skewness as a function of interest rates for 3 different productivity levels. We can state the following implication of our model:

**Implication 1: Heterogeneity and skewness of leverage.** The lower is the interest rate, the more heterogeneous is leverage across intermediaries. For low level of interest rates, there is an increased concentration of assets as the most risk-taking intermediaries leverage up a lot, leading to a higher cross-sectional skewness of leverage.

In Figure (2), the left graph plots the cutoff  $\alpha_t^L$  as a function of deposit rates  $r_t^D$  for three different productivity levels, while the right graph does the same for the aggregate capital stock  $K_t$ . As we can see,  $K_t$  is monotonically decreasing with  $r_t^D$ . As expected, the lower is the interest rate, the higher will be aggregate investment and we have a standard deposit supply curve. However, the change in *financial structure* underlying the smooth response in the capital stock is non-monotonic. As we can see from the left graph, the cutoff  $\alpha_t^L$  first decreases when we go from high interest rates to lower ones and then goes up sharply as we approach zero.

**Implication 2: Trade-off between financial stability and economic activity.** When interest rates are high, a fall in interest rates leads to entry by less risk-taking

---

<sup>20</sup>In this case the price of capital will adjust, as it is no longer pinned down by the investment technology. For recent macroeconomic models in which extensive and intensive margin have interesting interactions (albeit in very different contexts) see Martin and Ventura (2015) and Bergin and Corsetti (2015).

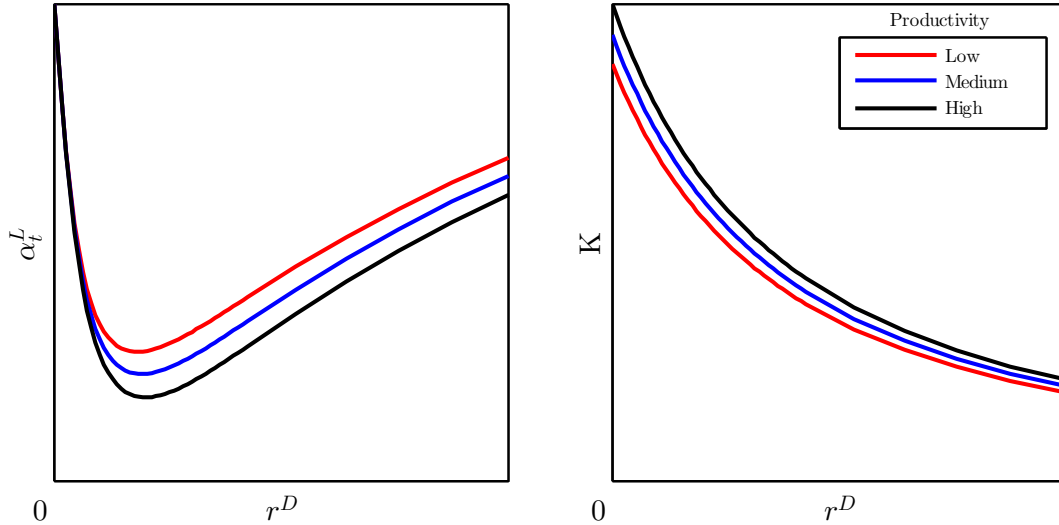


Figure 2: *Cut-off level  $\alpha_t^L$  and aggregate capital stock as a function of deposit rates  $r_t^D$*

intermediaries (a fall in the cutoff  $\alpha_t^L$ ) into levered markets. But when interest rates are low, a fall in interest rates leads to a rise in the cutoff  $\alpha_t^L$ , which means the least risk-taking intermediaries drop off the market while more risk-taking intermediaries increase their balance sheet size and leverage.

Therefore, unlike in the earlier literature, there is a potential trade-off between financial stability and monetary policy when interest rates are low, but not when they are high. The level of the interest rate matters. During a monetary expansion, the cost of liabilities is reduced and the partial equilibrium results described above follow. The fact that risk-taking intermediaries are able to lever more can increase the capital stock while still pricing out less risk-taking ones. This means that the financial sector becomes less stable, with risky assets concentrated in very large, more risk-taking financial institutions. There is also potentially large mispricing of risk<sup>21</sup>, since the active intermediaries are those who engage the most in risk-shifting. As a result, the effects of risk-shifting on investment are amplified through the change in the extensive margin.

We illustrate this point in our partial equilibrium setting by doing a 100 basis points monetary expansion for different target rates. For this experiment, we assume a very

<sup>21</sup>Defined here as the difference between the market price and the price investors would be willing to pay in the absence of limited liability.

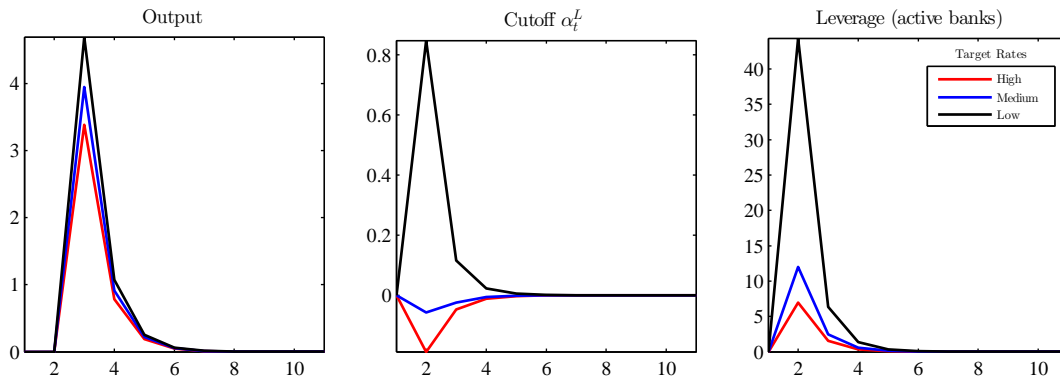


Figure 3: *Partial equilibrium IRF to a 100 basis points fall in deposit rates. Scale in percentage point deviations from the baseline*

simple monetary policy rule:

$$R_t = R_{t-1}^\nu \bar{R}^{1-\nu} \varepsilon_t^R \quad (28)$$

where  $R_t = 1 + r_t^D$  is the return on deposit or the cost of leverage for intermediaries.  $\varepsilon_t^R$  is a monetary policy shock,  $\bar{R}$  is the long-run level of interest rates and  $\nu$  the persistence of the shock, calibrated<sup>22</sup> to 0.24. For simplicity, in this simple partial equilibrium exercise, we assume that the monetary authority can directly affect the deposit rate. We relax this assumption in section 4 and show how it can be mapped into this exercise.

Results can be seen in Figure (3), plotted as percentage changes from their respective values at target rates  $\bar{R}$ .<sup>23</sup> The time period corresponds to one year and the state of the economy when the shock hits is the one corresponding to the target rates. In the left graph we see that the rise in output seems to be slightly larger when rates are low, with the rise ranging from 3.2% to 4.5%. The monotonicity of  $K_t$  with respect to  $r_t^D$  ensures, as expected, that a monetary policy expansion stimulates investment and the capital stock in all cases. The behaviour of the cutoff  $\alpha_t^L$  is, however, very differentiated. When the target rates are high, there is a small negative effect of a monetary expansion on the cutoff. That means that less risk-taking intermediaries enter risky markets and the average probability of intermediary default falls. In this case, there is no trade-off between financial stability and monetary expansion. This is definitely not the case when target interest rates are low. In that case, average leverage increases massively

<sup>22</sup>Annualized value as estimated by Curdia et al. (2015)

<sup>23</sup>Note that there is no truly dynamic aspect in the partial equilibrium model and it can be seen as a sequence of static problems. The general equilibrium model of section 4 will feature a fully dynamic household problem which affects the banking problem via demand for deposits.

by 43% and the cutoff also rises. The large increase in leverage by very risk-taking intermediaries then prices out the less risk-taking ones at the margin, raising the average probability of default among levered intermediaries. This large effect on leverage is a combination between both the intensive margin effect, and a composition effect due to exit of the most risk averse intermediaries. For intermediate levels, we see that this effect is muted, with leverage increasing slightly more than in the first case and the effects on the systemic risk (cutoff) being negative but only marginally so. This leads us to state another implication of our model regarding links between macroeconomic variables and underlying financial structures, which we believe is quite novel in the literature.

**Implication 3: Similar aggregate investment outcomes can be supported by very different underlying financial structures.**

To sum up, in some cases, lowering interest rates may well stimulate the economy but also contribute to an increase in systemic risk. This happens through a change in the composition of intermediaries. Less risk-taking intermediaries exit levered markets and decrease their asset holdings as they are priced out by more risk-taking institutions due to decreasing returns to capital. The latter use low interest rates to increase their leverage significantly. Given that risk-shifting is larger in riskier intermediaries, this also generates more risk-taking on aggregate. But these effects happen only for low levels of interest rates. At higher levels, there is no such trade-off between monetary policy and financial stability. Our framework, appropriately enriched<sup>24</sup>, should ultimately help us quantify the importance of the risk-taking channel of monetary policy.

We note that even in the absence of monetary policy, the effects described above have implications for the cyclicity of leverage, systemic risk and aggregate risk-shifting. The cyclicity of the savings behaviour and its effect on equilibrium deposit rates will also lead to cyclical movements in leverage and investment. To understand this more fully, we now close the general equilibrium model by adding the intertemporally optimizing household sector to determine the deposit rate endogenously.

## 4 General Equilibrium

In this section, we solve the model in general equilibrium by joining the household and intermediary problems. We show that the financial sector equilibrium can be easily integrated in a standard dynamic stochastic general equilibrium framework, with monetary policy and productivity shocks, as well as costly default.

---

<sup>24</sup>In particular by introducing nominal rigidities, which is left to another paper

## 4.1 Monetary policy as a change in the cost of external funds

In this section we allow intermediaries to fund themselves through wholesale funding  $l_{it}$ . We assume that the monetary authority can control the rate of wholesale funding relative to deposits, by providing funds at a spread  $\gamma_t$  from deposits.<sup>25</sup> Wholesale funding is remunerated at rate  $R_t^L = 1 + r_t^L$  and we denote the deposit rate  $r_t^D$  as before. We assume that:

$$R_t^L = R_t^D(1 - \gamma_t) \quad (29)$$

Monetary policy is exogenous, akin to a funding subsidy  $\gamma_t$  which follows a simple AR(1) process in logs.

$$\log \gamma_t = (1 - \rho^\gamma)\mu^\gamma + \rho^\gamma \log \gamma_{t-1} + \varepsilon_t^\gamma \quad (30)$$

$$\varepsilon_t^\gamma \sim N(0, \sigma_\gamma) \quad (31)$$

where  $\mu^\gamma$  is the central bank target subsidy,  $\rho^\gamma$  the subsidy's persistence and  $\varepsilon^\gamma$  are monetary policy shocks with  $\sigma_\gamma$  standard deviation.

If the central bank were to provide unlimited funds to intermediaries at this rate, they would leverage using only wholesale funding. We assume that wholesale funding is given in a fixed proportion  $\chi$  of other liabilities, which in this case are simply deposits. Total wholesale funding for intermediary  $i$  is then:

$$l_{it} = \chi d_{it} \quad (32)$$

The balance sheet of an intermediary  $i$  is then:

Assets	Liabilities
$k_{it}$	$\omega$
$s_{it}$	$d_{it}$
	$l_{it}$

Given our assumptions, we can then define  $R_t^F$  as the total cost of a unit of funding and  $f_{it}$  as total external funds of bank  $i$ .

$$R_t^F = \frac{1 + \chi(1 - \gamma_t)}{1 + \chi} R_t^D \quad (33)$$

$$f_{it} = (1 + \chi)d_{it} \quad (34)$$

We can then write the balance sheet as:

---

<sup>25</sup>The monetary authority is assumed to be a deep-pocketed institution which can always fund wholesale funding. Like deposits, wholesale funds are always repaid (by bailout if necessary). To avoid dealing with the monetary authority's internal asset management, we assume the cost of fund is a deadweight loss (or gain).



Assets	Liabilities
$k_{it}$	$\omega$
$s_{it}$	$f_{it}$

With external funds being remunerated at rate  $R_t^F$ . We obtain the same banking problem as before, replacing deposits by total funds  $f_{it}$  and the deposit rate by the unit cost of funds  $R_t^F$ . We can solve analogously as before, and map  $f_{it}$  and  $R_t^F$  easily to deposits  $d_{it}$  and their rate  $R_t^D$ . By moving  $\gamma_t$  the central bank will be able to change  $R_t^F$  as long as changes in equilibrium  $R_t^D$  do not offset perfectly the changes in the spread on the total cost of funding.

## 4.2 Solving the dynamic model

The financial sector equilibrium can be seen as a sequence of static problems given funding costs  $R_t^F$ . We can then solve for the aggregate capital stock  $K$  and cutoff  $\alpha_t^L$  as a function of  $R_t^F$  and expected productivity  $Z^e$ .

$$K = K^*(R^F, Z^e) \quad (35)$$

$$\alpha^L = \alpha^{L,*}(R^F, Z^e) \quad (36)$$

By integrating balance sheet equations, we obtain an expression for total funds  $F_t$  and deposit supply  $D_t$ :

$$F_t = \int_{\alpha_t^L}^{\bar{\alpha}} k_{it}^L dG(\alpha^i) - [1 - G(\alpha_t^L)]\omega \quad (37)$$

$$D_t = \int_{\alpha_t^L}^{\bar{\alpha}} d_{it}^L dG(\alpha^i) = \frac{F_t}{1 + \chi} \quad (38)$$

where  $F_t = \int f_{it} dG(\alpha^i)$  are total liabilities held by *leveraged* intermediaries and  $D_t$  is aggregate deposit demand. Market clearing in the deposit market requires supply and demand to be equal.

$$D_t^H = D_t \quad (39)$$

Goods market clearing requires that output is used in consumption of intermediaries and households, investment and the accumulation of storage. The investment good is the consumption good and there are no capital or investment adjustment costs<sup>26</sup>. Aggregate investment  $I_t$  is given by the law of motion of the capital stock  $K_t = (1 - \delta)K_{t-1} + I_t$ .

<sup>26</sup>We also do not constrain new capital to be larger than the stock of undepreciated capital

$$S_{t-1}^H + S_{t-1}^I + Y_t = C_t^H + C_t^I + S_t^H + S_t^I + I_t + T_t \quad (40)$$

where  $C_t^I = \int c_{it} dG(\alpha^i)$  and  $T_t = \int t_t^i dG(\alpha^i)$ . Note that taxes here are equal to the deposit insurance repayments, which require real resources.  $S_t^H$  are the holdings of storage held by households and  $S_t^I = \int s_{it} dG(\alpha^i)$  are aggregate storage holdings held by financial intermediaries at  $t$ .

**Definition 2: Equilibrium.**

Let  $\mathcal{S} = \{D_{t-1}, S_{t-1}^H, S_{t-1}^I, K_{t-1}, Z_{t-1}, \gamma_{t-1}, \varepsilon_t^z, \varepsilon_t^\gamma\}_{t=0}^\infty$  be the vector of state variables and shocks. Given a sequence of rates  $\{r_t^D\}_{t=0}^\infty$  and financial market rules  $K(\mathcal{S}), \alpha^L(\mathcal{S}), S(\mathcal{S})$ , let us define the optimal decisions of the representative household as  $C^H(\mathcal{S}), D^H(\mathcal{S}), S^H(\mathcal{S})$ .

An equilibrium is a sequence of rates  $\{r_t^D\}_{t=0}^\infty$ , and policy rules  $C^H(\mathcal{S}), D^H(\mathcal{S}), S^H(\mathcal{S}), S^I(\mathcal{S}), K(\mathcal{S}), \alpha^L(\mathcal{S})$ , such that:

- $C(\mathcal{S}), D^H(\mathcal{S}), S^H(\mathcal{S}), S^I(\mathcal{S}), K(\mathcal{S}), \alpha^L(\mathcal{S})$  are optimal given  $\{r_t^D\}_{t=0}^\infty$
- Asset and goods markets clear at every period  $t$

In equilibrium, we need to find a deposit rate which, conditional on exogenous variables and the financial sector equilibrium, is consistent with the household problem. We proceed by iterating on  $r_t^D$ , imposing the financial market equilibrium results. For a given deposit rate  $r_t^D$ , we can find the law of motion for household wealth and consumption and use the Euler equation errors to update the deposit rate. A more detailed explanation of the algorithm used for our global solution method can be seen in Appendix A.

### 4.3 Calibration

To solve the model numerically, we need to specify the period utility function, the shape of the distribution of the Value-at-Risk probabilities and calibrate the remaining parameters. Given the interaction between extensive and intensive margin effects, the mass of intermediaries in a given section of the distribution could have an important role in determining which of the two effects dominates. To highlight that the results described are not a consequence of this distribution, we assume that  $G(\alpha^i)$  is uniform between  $[0, \bar{\alpha}]$ . For the utility function, we assume a standard CRRA representation.

$$u(C) = \frac{C^{1-\psi} - 1}{1 - \psi} \quad (41)$$

Table 1: Calibration of selected parameters

Parameter	Value	Description
$\psi$	4	Risk aversion parameter
$\beta$	0.95	Subjective discount factor
$\rho^z$	0.9	AR(1) parameter for TFP
$\sigma_z$	0.028	Standard deviation of TFP shock
$\mu^\gamma$	0.023	Target spread over deposit rates
$\rho^\gamma$	0.816	Spread persistence
$\sigma_\gamma$	0.0128	Standard deviation of spread
$\frac{\chi}{1+\chi}$	0.41	Wholesale funding percentage
$\theta$	0.35	Capital share of output
$\delta$	0.1	Depreciation rate
$\omega$	0.51	Equity of intermediaries
$\bar{\alpha}$	0.1	Upper bound of distribution $G(\alpha^i)$

The calibration can be seen in Table (1). For the utility function parameters, risk aversion  $\psi$ , the subjective discount factor  $\beta$ , the TFP parameters  $\rho^z$  and  $\sigma_z$  we use standard values from the literature. Similarly for  $\theta$ , the capital share of output, and for  $\delta$  the depreciation rate of the capital stock. To calibrate the monetary policy parameters, we calculate the subsidy as the difference between the Effective Fed funds Rate and  $1/\beta$ , the long-run deposit rate. We then fit an AR(1) process to get the parameters used.

The wholesale funding percentage used to calibrate  $\chi$  was calculated from the time series mean of the cross-sectional asset-weighted average in Bankscope data<sup>27</sup> for the period 1993-2015. For the purpose of this calibration, wholesale funding was assumed to be all non-deposit liabilities of each financial intermediary.

$\bar{\alpha}$  is the probability of default of the riskiest intermediary in activity. Bali, Brown and Caglayan (2014) report that the median lifespan of a hedge fund is slightly less than 5 years, which would imply a value of approximately 0.2 for  $\bar{\alpha}$ . Using FDIC data on failed banks, we find that the median age of failed banks in the US was around 20.5 years. The full sample distribution of ages at failure can be seen in Figure (9). Given our specification of a uniform distribution and the fact that equity size is fixed in our model, we use a more conservative value of 0.1 for  $\bar{\alpha}$ . This implies an average lifespan of 10 years for the most risky of financial intermediaries and 20 years for the median

<sup>27</sup>Bankscope contains a large panel of banks balance sheet data; see Appendix C

intermediary. Although we do not believe the uniform distribution is realistic, if the underlying distribution in the data was uniform, and defaulting intermediaries replaced with identical ones, we should see higher frequencies of default for lower ages than for longer ones in a manner not too dissimilar with the FDIC data.

$\omega$  is chosen to fit average leverage at steady-state. Some of the intermediaries are leveraged and others are not, so we cannot use only Bankscope data (which contains mostly leveraged banks) to calibrate average leverage. According to the "broad measure" of Other Financial Institutions (OFIs) in the Global Shadow Banking Report (Financial Stability Board (2015)), non-levered intermediaries hold about 137 trillions of assets while banking assets are around 135 trillion. We use these figures to calculate an asset-weighted average of leverage of 7.3, which is reached by combining the Bankscope asset-weighted average leverage of 13.5 for 2015 and assuming a leverage of 1 for the OFIs. We target our calibration of  $\omega$  so the model matches this average leverage<sup>28</sup>.

#### 4.4 Monetary policy shocks

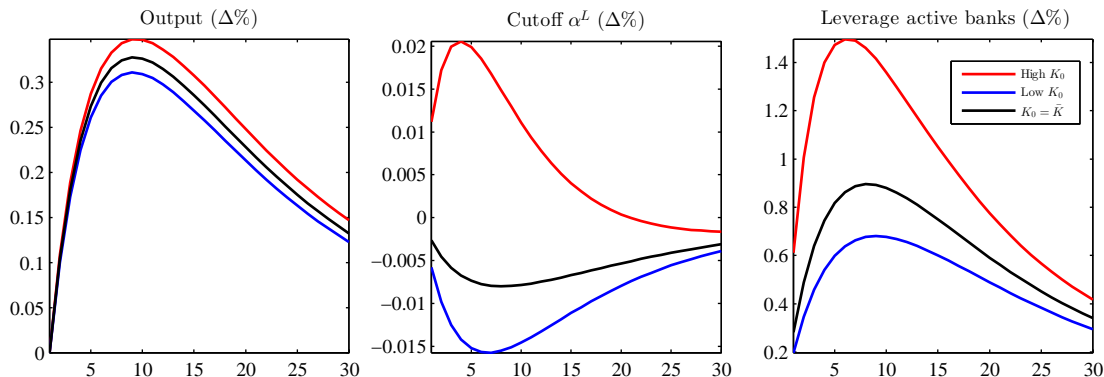


Figure 4: *Monetary policy shock of 100 basis points to  $\gamma_t$*

We now look at the impact of positive subsidy shock, which we will refer to as

<sup>28</sup>The value of  $\bar{\alpha}$ , the shape of the distribution and  $\omega$  all contribute to determine the financial sector reaction to changes in deposit rates. For that reason, we also conducted some comparative statics on both  $\bar{\alpha}$  and  $\omega$  to see how the model changes with those parameter calibrations. There is very little effect on the first moments of real variables such as output and consumption but there are changes on equilibrium leverage and systemic risk when we vary  $\omega$  and/or  $\bar{\alpha}$ . We leave for future work to perform a (technically challenging) estimation of the model where distributions  $G(\alpha)$  or of  $\omega$  could potentially be backed out from the data and focus here on understanding the mechanics of the model

an expansionary monetary policy shock. In Figure (4) we see the impact of a 100 basis points to the subsidy<sup>29</sup> in three different scenarios to illustrate the non-linear effects of monetary policy on systemic risk. Impulse response functions are expressed as deviations from the respective scenario in the absence of the shock. This monetary policy loosening decreases the funding rate of the banks as can be seen in the top right panel of Figure (11). Scenario 1 (blue line) features a low initial capital stock (corresponding to high equilibrium levels of the interest rate), where there is no trade-off between monetary policy and financial stability. Scenario 2 (red line) is for a larger capital stock (corresponding to a low level of equilibrium interest rate) where we are in the trade-off zone. Scenario 3 (black line) is at the risky steady-state<sup>30</sup>. As in Coeurdacier et al. (2011) we define the risky steady-state as the steady-state in which there are no shocks but economic agents take into account the full stochastic structure of the model when they optimize (unlike in the deterministic steady-state where they expect no shocks).

We can easily relate the general equilibrium results to the partial equilibrium intuitions developed above. In the case of a low initial capital stock (associated with a high equilibrium funding rate), a positive monetary policy shock expands output, increases aggregate leverage and at the same time it decreases systemic risk, due to the entry of less-risk taking intermediaries in deposit markets. We are in the "no trade-off zone of monetary policy" where a decrease in the interest rate increases investment and financial stability. In the case of a high initial capital stock (associated to a low funding cost for intermediaries), an expansionary shock has a larger positive effect on output and leverage but this time, risk averse intermediaries at the margin choose not to lever, reducing their balance sheet size significantly. More risk-taking intermediaries leverage a lot and financial stability is affected negatively.

**Implication 4. There exists a "trade-off zone for monetary policy" where there is a conflict between stimulus and financial stability.** This is a very different trade-off from the traditional Phillips curve which has been the benchmark model driving monetary policy analysis for many years. Aggregate economic variables such as consumption, wealth or capital behave smoothly as evidence in Figure (12) but the underlying change in financial structure supporting these macroeconomic outcomes can be significant depending on the level of the interest rate.

---

<sup>29</sup>Note that this translates in a lower reduction in the total cost of funds (see Figure (11)). This is due to the fact that the cost of funds is a composite of deposits and wholesale funds, but also due to endogenous movements in the deposit rate.

<sup>30</sup>These three scenarios were chosen to illustrate the parallel with the partial equilibrium setting, since the solution of the model is such that there is, ceteris paribus, a negative correlation between the capital stock and the funding rate as can be seen in Figure (2).

**Implication 5. The sensitivity of leverage to the cost of funding is larger for intermediaries who are in the upper range of the risk-taking distribution.** So the more concentrated is capital in this upper range, the more sensitive will aggregate leverage be to interest rate changes.

**Implication 6. The risk-premium decreases with a monetary policy loosening.** The marginal intermediary pricing the risk changes with the level of the interest rate due to the extensive margin (see Figure (11)). When the interest rate is lower, the intermediaries pricing risk are the most risk-loving ones, hence the lower risk premia. Note that risk premium is defined here as the wedge between expected return to capital and the cost of funds. The decline of the risk premium is also stronger when the level of interest rate is lower.

## 5 Empirical evidence on the cross-section of intermediary balance sheets

We do not present here a test of our model but a number of important new stylized facts on the distribution of intermediaries balance sheets over the cycle. These facts escaped the previous literature as it did not feature intermediary heterogeneity. In contrast our model has strong predictions.

**First, the model implies that the time correlation between leverage and interest rate is different across quantiles of the leverage distribution, even as aggregate leverage is monotonically decreasing with the interest rate.** In the top quantiles, leverage and interest rates are negatively related. In the bottom quantiles, some intermediaries may stop leveraging as interest rate goes down so the correlation sign may flip. For intermediaries that remain levered, Proposition 2.2 indicates that the covariance between interest rates and leverage should be larger for the most risk-taking (and most levered) intermediaries.

We use balance sheet data of financial intermediaries from Bankscope (see Appendix C) to compute leverage at the intermediary level. Leverage is defined as the ratio of assets over equity at book value. In Figure (5) we show the time series of leverage weighted by intermediary assets for different quantiles of the distribution and for the aggregate.<sup>31</sup> As can be seen in the middle and right panels, there is a very significant

---

<sup>31</sup>Results are very similar if we use instead CPI-deflated real rates, as can be seen in Figure (16). Up to 2007, the correlation between the top 1% and the real effective Fed Funds rate is -0.5 and it is

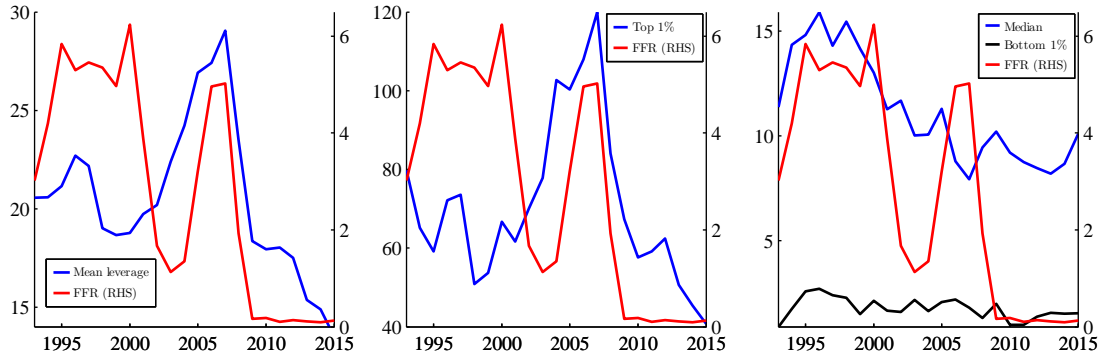


Figure 5: *Mean and selected quantiles of asset-weighted leverage of intermediaries (blue, LHS scale) and the Effective Fed Funds Rate (red, RHS scale, pp).*

heterogeneity within the financial sector in terms of time variation of leverage and its correlation with the interest rate. As predicted by the model, there is a clear dichotomy between the two parts of the distribution. The top quantile is negatively correlated with interest rates (correlation of  $-0.26$  up to 2007), with the more leveraged intermediaries increasing leverage sharply as interest rates fall to low levels in the early 2000s. This large increase in leverage is not apparent in neither the median nor the bottom 1% of the distribution where if anything there is a decrease. According to the model this is due to the less risk-taking intermediaries exiting the risky leveraged market as they are priced out by the most risk-taking ones. Aggregate leverage, shown in the left panel is also negatively correlated with interest rate (correlation of  $-0.11$  up to 2007) and increases abruptly when the rates decreased markedly, reproducing to some extent the interest rate sensitivity of the top quantile. The post-2008 period is of course very special with large state interventions and changes in regulation as well as unconventional monetary policy at the Zero Lower Bound (ZLB), all elements which are absent for our model.

**Second, low levels of the interest rate are associated with an increased skewness of leverage: risk gets concentrated in the (endogenously) larger, more risk-taking players.** This is a very distinction implication of our model. As with aggregate leverage, when rates are low, skewness is more sensitive to interest rate movements. In the left panel of Figure (6), we show the shape of cross-sectional skewness as a function of  $r_t^D$  for three different levels of productivity. It is apparent that the direct impact of productivity on skewness, although positive, seems second-order relative to the impact of interest rates<sup>32</sup>. We use the same data as before to compute the

-0.31 for the average leverage.

<sup>32</sup>In general equilibrium, productivity will also affect skewness indirectly via its impact on deposit

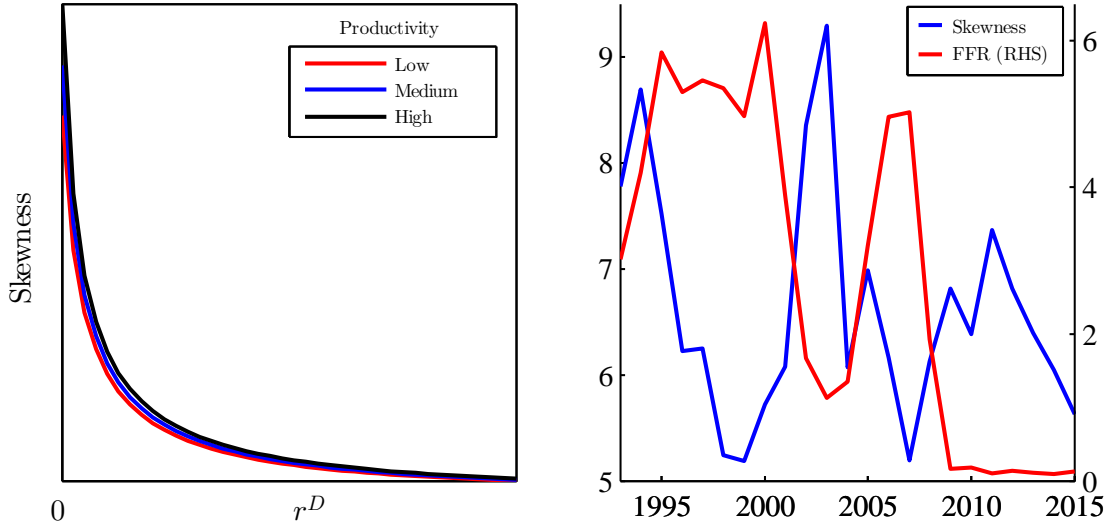


Figure 6: *Left:* Cross-sectional skewness as a function of deposit rates in the model *Right:* Time series of asset-weighted skewness of intermediary leverage (blue, LHS scale) and the Effective Fed Funds Rate (red, RHS scale) in pp.

time series of the skewness of leverage. In the right panel of Figure (6), we present the time series of asset-weighted skewness in parallel with the movements of the Effective Fed Funds Rate. There is a strong negative correlation between the Effective Fed Funds Rate and skewness as predicted by the model (correlation of -0.58 up to 2007), with a large spike in skewness as the interest rate is very low.<sup>33</sup> These results are striking and very encouraging for the mechanism of our model. We are not aware of any paper studying the distribution and skewness of leverage and linking it to monetary policy.

**Third, the model implies that in the cross-section (endogenously) larger more leveraged intermediaries make higher profits in good states of the world but are more exposed to aggregate risk.** Accordingly we analyse the returns of financial intermediaries in the run up to the crisis and look at its correlation with leverage and with the exposure to aggregate risk (measured by the world market

---

rates.

<sup>33</sup>Admittedly, the situation after 2008 when monetary policy is at the ZLB is (as explained above) quite unusual with large state interventions in the banking sector and changes in regulation, including leverage caps. Again, results are similar if we use CPI-deflated real rates instead, as can be seen in Figure (15). The correlation between skewness and the real effective Fed Funds rate is -0.45. We also computed skewness using only US bank data, results were very similar and are available on request.



beta). Figure (7) shows a positive correlation between pre-crisis betas and bank returns. We find a positive correlation between returns and leverage, confirming the results of Miranda-Agrippino and Rey (2015), who also show that the higher beta banks tended to do worse in the crisis as they were more exposed to aggregate risk.

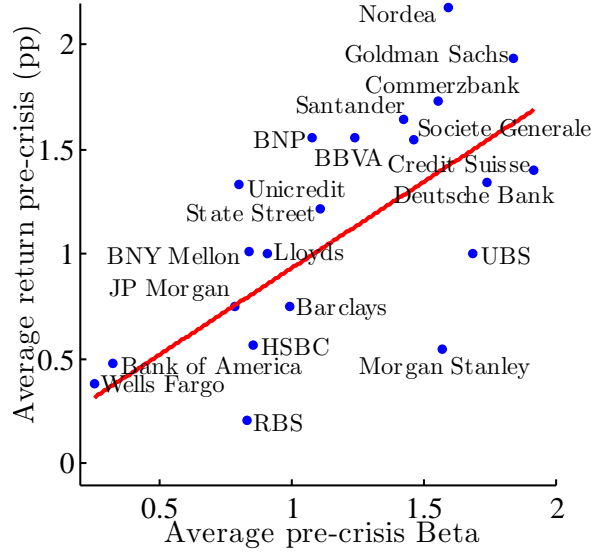


Figure 7: *Market beta and pre-crisis returns for SIFIs (Systemically Important Financial Institutions)*

Although none of this constitutes a formal test, we view those facts as supporting the relevance of the main mechanism of our model. This underlines the importance of looking at cross-sectional dynamics of the balance sheets of financial intermediaries, in order to understand macroeconomic developments.

## 6 Costly intermediary default

In this section, we relax the assumption of costless intermediary default. As in the previous section, leveraged intermediaries active in risky financial markets can potentially default on depositors if the realisation of the productivity shock is low enough. This requires intervention by the government to pay deposit insurance, which is now less benign than previously assumed as there is a deadweight loss<sup>34</sup>.

<sup>34</sup>As before, deposit guarantees will be financed by lump sum taxation of households. The welfare analysis of our set up is left for future work.

We parameterize the cost of intermediary bailouts by assuming that capital held by defaulting intermediaries suffers a proportional productivity loss  $\bar{\Delta}$  relative to the productivity of capital held by non-defaulting intermediaries. This disruption can affect financial markets in the following periods by creating an efficiency loss  $\Delta_t$  which is proportional to the mass of capital held by defaulting banks  $\mu_t^d$ .<sup>35</sup>

The loss of productivity is intermediary-specific during default (it affects only the defaulting intermediaries, not the others), but it can affect the whole economy moving forward (the allocative process of the whole economy is impaired). We call this the *crisis* state. We model the persistence of the crisis state through a Poisson process, with a constant probability  $p$  of exiting the crisis at each period. Depending on the process, variable  $\xi_t$  takes the value of one if the crisis carries on to the next period or zero if it does not. Our specification nests both the case of costless default ( $\bar{\Delta} = 0$ ) and the case where there is no disruption of financial markets in subsequent periods ( $p = 1$ ). We have:

$$\mu_t^d = \frac{\int k_{it} \mathbb{1}_{(\pi^i < 0)} dG(\alpha^i)}{K_t} \quad (42)$$

$$\Delta_t = \xi_{t-1} \max(\mu_{t-1}^d \bar{\Delta}, \Delta_{t-1}) \quad (43)$$

$$(44)$$

where the indicator function takes the value of 1 if intermediary  $i$  is in default or 0 if not. If there are also defaults during a crisis state, then the max operator ensures that the largest penalty applies going forward. Whenever the economy is in crisis, productivity for all financial intermediaries is scaled down by a factor  $\mu^d$  proportional to the percentage of total capital held by defaulting intermediaries.  $\xi_{t-1}$  is known to agents when they make their investment decisions at period  $t - 1$ , so the uncertainty on the returns on their capital investment is only on the realization of the exogenous productivity process<sup>36</sup>. This timing assumption allows us to keep tractability as the main difference in the financial sector block is that now  $Z_{t+1}^e = (1 - \Delta_t) Z_t^{\rho^z}$ . Since both  $\Delta_t$  and  $Z_t$  are state variables, we can still solve for the financial sector equilibrium as before.

This set up is tractable and allows us to parameterize crises of different severity and length. Reinhart and Rogoff (2009) presents a classic description of the characteristics

---

<sup>35</sup>For example, if defaulting intermediaries held 3% of total capital during default at  $t - 1$ , then if the crisis persists  $\Delta_t = 0.03\bar{\Delta}$ .

<sup>36</sup>There is still uncertainty on asset returns if the intermediary defaults but this is not considered in the intermediary problem due to limited liability truncating the profit functions at zero in those states.

of crises across history, and evidence that crises associated with banking crises are more severe. Borio et al. (2016) and Laeven and Valencia (2012) present empirical evidence showing that there can be substantial and long lasting productivity drops after financial crises. To calibrate these parameters we refer to the database of Laeven and Valencia (2012), setting  $p = 0.5$  to target an average crisis length of 2 years as in the data, and  $\bar{\Delta} = 0.11$  implying a maximal efficiency loss of 11% per year<sup>37</sup>.

## 6.1 Productivity shocks and financial crises

In this section we study the impact of a financial crisis on the path of the economy, following a large productivity shock. Figure (8) shows the impact of a large productivity shock in 3 possible scenarios<sup>38</sup>.

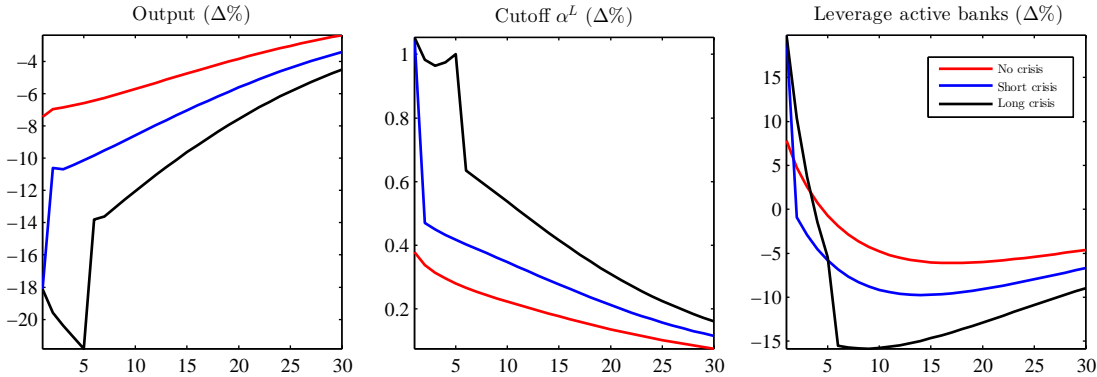


Figure 8: *Large shock to exogenous productivity*

In scenario 1 (red line) the economy at the risky steady-state is hit at period  $t$  by the largest possible shock that does not trigger any defaults. In scenarios 2 (blue line) and 3 (black line) the economy is hit with the smallest shock such that all *levered* intermediaries default. The difference between scenarios 2 and 3 is in the length of the crisis. Scenario 2 is the "lucky" scenario, where the crisis does not carry on to the next periods:  $\xi_t = 0$ . Scenario 3 is the "unlucky" scenario, where the crisis carries on for an additional 4 periods:  $\xi_s = 1$  for  $s = t$  to  $t+3$ . The length of the crisis is unknown beforehand to the agents in the economy, although as mentioned before they observe the value of  $\xi_t$  when they make their investment decisions at  $t$ . Not surprisingly, when the crisis hits there is

<sup>37</sup>In the database of Laeven and Valencia (2012), the average cumulative output loss is 23%

<sup>38</sup>Impulse response functions expressed in basis points deviations for rates or otherwise in percent deviations from the risky-steady state

a large decline in output. As productivity is low, only the intermediaries with the looser Value-at-Risk constraints can operate. The average leverage of active intermediaries first shoots up but then decreases and falls below the pre-crisis state as more intermediaries find it worthwhile to lever up when productivity improves. Note that this initial rise in leverage (in the subset of banks which are borrowing) is a pure composition effect since total sector leverage falls as evidenced in the bottom right panel of Figure (13).

The length of the crisis also has very interesting dynamic effects on financial variables, as can be seen in Figure (13). Deposit and funding rates decrease on impact as productivity drops. So does the risk premium because of the low expected return to capital. Given that households expect to exit the crisis state with probability  $p$ , when exit fails to materialize in Scenario 3 they are running down their wealth and their consumption dips down (see Figure (14)). As wealth falls, the deposit rate grows, and along with it funding costs, as it becomes more costly for the household to save and fund bank leverage. When eventually the economy exits the crisis state, household wealth is low and demand for leverage rises, leading to a jump in deposit rates to compensate households for decreased consumption today. This leads also to a higher risk premium as expected return to capital jumps up. Total leverage, which had massively declined goes up again. This effect is also present with a short crisis, but is particularly stark for the longer crisis.

## 7 Conclusion

This paper develops a novel framework for modeling a financial sector with heterogeneous financial intermediaries and aggregate risk. The heterogeneity in the Value-at-Risk constraints coupled with limited liability generates not only endogenous entry and exit in risky capital markets, but also time variation in leverage, risk-shifting and systemic risk.

The interaction between the intensive and the extensive margins of investment creates a rich set of non-linear dynamics where the level of interest rates plays a key role. When interest rates are high, a monetary expansion (defined here as a decrease in the cost of funding for intermediaries) increases both the intensive margin (the amount of leverage) and the extensive margin (which intermediaries decide to lever). The intensive margin grows because active intermediaries are able to lever more and the fall in the cost of funding leads to increased participation by less risk-taking institutions which enter levered markets. The monetary authority is able to stimulate the economy, while at the same time decreasing systemic risk.

However, when interest rates are already low, a further reduction can lead to large increases in leverage by the most risk-taking institutions, pricing out -due to decreasing aggregate returns to capital- previously active intermediaries despite the fall in the cost of funding. As before, the intensive margin grows but there is a fall in the extensive margin as intermediaries at the margin exit levered markets. Importantly, the intermediaries who stop leveraging and decrease their balance sheet size have lower probabilities of default than those that remain levered, leading to an increase in systemic risk. Hence our model, unlike the existing literature, generates a tradeoff between economic activity and financial stability depending on the level of the interest rate.

Because our framework has heterogeneity at its heart, it allows us to make use of cross-sectional data on intermediary balance sheets. For example, we derive novel implications linking the times series of the skewness of leverage and monetary policy. These implications are strikingly borne out in the data. We believe we are the first paper able to link changes in the distribution of leverage in the cross section, macroeconomic developments and fluctuations in systemic risk. We show that similar macroeconomic outcomes can be supported by very different underlying financial structures. This has important implications for the transmission of monetary policy and the sensitivity of the economy to interest rate movements.

A major advantage of our framework is that our financial block is easy to embed in a standard dynamic stochastic general equilibrium framework. The rich dynamics that arise from fluctuations in the composition of active financial intermediaries can be described simply by tracking changes in the aggregate capital stock  $K_t$  and the cutoff  $\alpha_t^L$ . We plan to extend our model to environments with sticky prices and a more complex portfolio choice on the bank side as well as to study boom and bust cycles in emerging markets. We also plan to apply it to explain the dynamics of the real estate market, using detailed data, as well as the endogenous dynamics of the VIX.

The model could also be calibrated to fit a distribution of financial intermediaries characteristics, as one could in practice back out the distribution of  $\alpha^i$  from leverage data and map it to the ergodic distribution of leverage in the model. Given the numerical integration approach, it is also possible to extend the model to have a distribution of intermediary-specific equity  $\omega^i$ . That said, allowing for time variation in equity would require the introduction of an additional state-variable in the financial sector problem which would make the solution more computationally intensive.<sup>39</sup> We leave these issues, as well as the welfare implications of our model, for future research.

---

<sup>39</sup>And having together time-varying and intermediary-specific equity could require an infinitely dimensional state-space without additional assumptions.

## References

- Acharya, Viral and Guillaume Plantin (2016) “Monetary Easing and Financial Instability,” *mimeo NYU Stern and Sciences Po*.
- Adrian, Tobias and Nina Boyarchenko (2015) “Intermediary leverage cycles and financial stability,” *Federal Reserve Bank of New York, Staff Reports 567*.
- Adrian, Tobias and Hyun S. Shin (2010) “Financial Intermediaries and Monetary Economics,” in Benjamin M. Friedman and Michael Woodford eds. *Handbook of Monetary Economics*, Vol. 3 of Handbook of Monetary Economics: Elsevier, Chap. 12, pp. 601–650.
- Adrian, Tobias and Hyun Song Shin (2014) “Procyclical Leverage and Value-at-Risk,” *Review of Financial Studies*, Vol. 27, pp. 373–403.
- Allen, Franklin and Douglas Gale (2000) “Bubbles and Crises,” *The Economic Journal*, Vol. 110, pp. 236–255.
- Angeloni, Ignazio and Ester Faia (2013) “Capital regulation and monetary policy with fragile banks,” *Journal of Monetary Economics*, Vol. 60, pp. 311–324.
- Aoki, Kosuke, Gianluca Benigno, and Nobuhiro Kiyotaki (2016) “Monetary and Financial Policies in Emerging Markets,” *mimeo, Tokyo University, London School of Economics, and Princeton University*.
- Bali, Turan G., Stephen J. Brown, and Mustafa O. Caglayan (2014) “Macroeconomic risk and hedge fund returns,” *Journal of Financial Economics*, Vol. 114, pp. 1–19.
- Basel Committee on Banking Supervision (2013) “Analysis of risk-weighted assets for market risk,” Regulatory consistency assessment programme (RCAP), Bank for International Settlements.
- Bergin, Paul R and Giancarlo Corsetti (2015) “Beyond Competitive Devaluations: The Monetary Dimensions of Comparative Advantage,” CEPR Discussion Papers 10718, C.E.P.R. Discussion Papers.
- Bernanke, Ben and Mark Gertler (1989) “Agency Costs, Net Worth, and Business Fluctuations,” *American Economic Review*, Vol. 79, pp. 14–31.
- Boissay, Frederic, Fabrice Collard, and Frank Smets (2016) “Booms and Systemic Banking Crises,” *Journal of Political Economy*, Vol. 124.

- Borio, Claudio, Enisse Kharroubi, Christian Upper, and Fabrizio Zampolli (2016) “Labour reallocation and productivity dynamics: financial causes, real consequences,” BIS Working Papers 534, Bank for International Settlements.
- Borio, Claudio and Haibin Zhu (2012) “Capital regulation, risk-taking and monetary policy: A missing link in the transmission mechanism?,” *Journal of Financial Stability*, Vol. 8, pp. 236–251.
- Brunnermeier, Markus K. and Yuliy Sannikov (2014) “A Macroeconomic Model with a Financial Sector,” *American Economic Review*, Vol. 104, pp. 379–421.
- Bruno, Valentina and Hyun Song Shin (2015) “Capital flows and the risk-taking channel of monetary policy,” *Journal of Monetary Economics*, Vol. 71, pp. 119–132.
- Challe, Edouard, Benoit Mojon, and Xavier Ragot (2013) “Equilibrium risk shifting and interest rate in an opaque financial system,” *European Economic Review*, Vol. 63, pp. 117–133.
- Coeurdacier, Nicolas, Hélène Rey, and Pablo Winant (2011) “The Risky Steady State,” *American Economic Review*, Vol. 101, pp. 398–401.
- Coimbra, Nuno (2016) “Sovereigns at Risk: a dynamic model of sovereign debt and banking leverage,” *mimeo Paris School of Economics*.
- Curdia, Vasco, Andrea Ferrero, Ging Cee Ng, and Andrea Tambalotti (2015) “Has U.S. monetary policy tracked the efficient interest rate?” *Journal of Monetary Economics*, Vol. 70, pp. 72 – 83.
- Curdia, Vasco and Michael Woodford (2010) “Credit Spreads and Monetary Policy,” *Journal of Money, Credit and Banking*, Vol. 42, pp. 3–35.
- Danielsson, Jon, Hyun Song Shin, and Jean-Pierre Zigrand (2010) “Risk Appetite and Endogenous Risk,” FMG Discussion Papers dp647, Financial Markets Group.
- Dell’Ariccia, Giovanni, Luc Laeven, and Robert Marquez (2014) “Real interest rates, leverage, and bank risk-taking,” *Journal of Economic Theory*, Vol. 149, pp. 65 – 99.
- Dell’Ariccia, Giovanni, Luc Laeven, and Gustavo Suarez (2013) “Bank Leverage and Monetary Policy’s Risk-Taking Channel; Evidence from the United States,” IMF Working Papers 13/143, International Monetary Fund.
- Diamond, Douglas W and Philip H Dybvig (1983) “Bank Runs, Deposit Insurance, and Liquidity,” *Journal of Political Economy*, Vol. 91, pp. 401–19.

- Diamond, Douglas W. and Anil K Kashyap (2016) “Liquidity Requirements, Liquidity Choice and Financial Stability,” NBER Working Papers 22053, National Bureau of Economic Research, Inc.
- Farhi, Emmanuel and Ivan Werning (2016) “A Theory of Macroprudential Policies in the Presence of Nominal Rigidities,” Working Paper 95131, Harvard University OpenScholar.
- Financial Stability Board (2015) “Global Shadow Banking Report 2015,” Technical report, Financial Stability Board.
- Fostel, Ana and John Geanakoplos (2012) “Why does bad news increase volatility and decrease leverage?,” *Journal of Economic Theory*, Vol. 147, pp. 501–525.
- Geanakoplos, John (2011) “What’s Missing from Macroeconomics: Endogenous Leverage and Default,” in *Approaches to Monetary Policy Revisited – Lesson from the Crisis, Sixth ECB Central Banking Conference*, pp. 220–238.
- Gennaioli, Nicola, Andrei Shleifer, and Robert Vishny (2012) “Neglected risks, financial innovation, and financial fragility,” *Journal of Financial Economics*, Vol. 104, pp. 452 – 468.
- Gertler, Mark and Peter Karadi (2011) “A model of unconventional monetary policy,” *Journal of Monetary Economics*, Vol. 58, pp. 17–34.
- Gertler, Mark and Nobuhiro Kiyotaki (2015) “Banking, Liquidity, and Bank Runs in an Infinite Horizon Economy,” *American Economic Review*, Vol. 105, pp. 2011–43.
- Gertler, Mark, Nobuhiro Kiyotaki, and Albert Queralto (2012) “Financial crises, bank risk exposure and government financial policy,” *Journal of Monetary Economics*, Vol. 59, pp. S17–S34.
- Gorton, Gary (1988) “Banking Panics and Business Cycles,” *Oxford Economic Papers*, Vol. 40, pp. 751–81.
- He, Zhiguo and Arvind Krishnamurthy (2013) “Intermediary Asset Pricing,” *American Economic Review*, Vol. 103, pp. 732–70.
- (2014) “A Macroeconomic Framework for Quantifying Systemic Risk,” Working Paper 19885, National Bureau of Economic Research.
- Jermann, Urban and Vincenzo Quadrini (2012) “Macroeconomic Effects of Financial Shocks,” *American Economic Review*, Vol. 102, pp. 238–71.



- Jimenez, Gabriel, Steven Ongena, JoseLuis Peydro, and Jesus Saurina (2014) “Hazardous Times for Monetary Policy: What Do TwentyThree Million Bank Loans Say About the Effects of Monetary Policy on Credit RiskTaking?,” *Econometrica*, Vol. 82, pp. 463–505.
- Jorda, Oscar, Moritz Schularick, and Alan Taylor (2011) “Financial Crises, Credit Booms, and External Imbalances: 140 Years of Lessons,” *IMF Economic Review*, Vol. 59, pp. 340–378.
- Kalemli-Ozcan, Sebnem, Bent Sorensen, and Sevcan Yesiltas (2012) “Leverage across firms, banks, and countries,” *Journal of International Economics*, Vol. 88, pp. 284–298.
- Kareken, John H and Neil Wallace (1978) “Deposit Insurance and Bank Regulation: A Partial-Equilibrium Exposition,” *The Journal of Business*, Vol. 51, pp. 413–38.
- Kiyotaki, Nobuhiro and John Moore (1997) “Credit Cycles,” *Journal of Political Economy*, Vol. 105, pp. 211–48.
- Koijen, Ralph S.J. and Motohiro Yogo, “An Equilibrium Model of Institutional Demand and Asset Prices,” *mimeo, Princeton University*.
- Korinek, Anton and Suarez Nowak (2017) “Risk-taking dynamics and financial stability,” *mimeo*.
- Laeven, Luc and Fabian Valencia (2012) “Systemic Banking Crises Database: An Update,” *International Monetary Fund, Working Papers, 12/163*.
- Malherbe, Frédéric (2015) “Optimal capital requirements over the business and financial cycles,” CEPR Discussion Papers 10387, C.E.P.R. Discussion Papers.
- Martin, Alberto and Jaume Ventura (2015) “Financial Reforms and Capital Flows: Insights from General Equilibrium,” in Ricardo J. Caballero and Klaus Schmidt-Hebbel eds. *Economic Policies in Emerging-Market Economies Festschrift in Honor of Vittorio Corbo*, Vol. 21 of Central Banking, Analysis, and Economic Policies Book Series: Central Bank of Chile, Chap. 7, pp. 109–137.
- Martinez-Miera, David and Javier Suarez (2014) “Banks’ Endogenous Systemic Risk-taking,” *mimeo*.
- Melitz, Marc J. (2003) “The Impact of Trade on Intra-Industry Reallocations and Aggregate Industry Productivity,” *Econometrica*, Vol. 71, pp. 1695–1725.

- Mendoza, Enrique G. (2010) “Sudden Stops, Financial Crises, and Leverage,” *American Economic Review*, Vol. 100, pp. 1941–66.
- Mendoza, Enrique G. and Katherine A. Smith (2014) “Financial Globalization, Financial Crises, and the External Portfolio Structure of Emerging Markets,” *Scandinavian Journal of Economics*, Vol. 116, pp. 20–57.
- Miranda-Agrippino, Silvia and Hélène Rey (2015) “World Asset Markets and the Global Financial Cycle,” NBER Working Papers 21722, National Bureau of Economic Research, Inc.
- Morais, Bernardo, Jose-Luis Peydro, and Claudia Ruiz Ortega (2015) “The international bank lending channel of monetary policy rates and quantitative easing : credit supply, reach-for-yield, and real effects,” *The World Bank Policy Research Working Paper Series*.
- Nuño, Galo and Carlos Thomas (2017) “Bank leverage cycles,” *forthcoming in American Economic Journal: Macroeconomics*.
- Reinhart, Carmen and Kenneth Rogoff (2009) *This Time Is Different: Eight Centuries of Financial Folly*: Princeton University Press, 1st edition.
- Tauchen, George and Robert Hussey (1991) “Quadrature-Based Methods for Obtaining Approximate Solutions to Nonlinear Asset Pricing Models,” *Econometrica*, Vol. 59, pp. 371–96.

## Figures

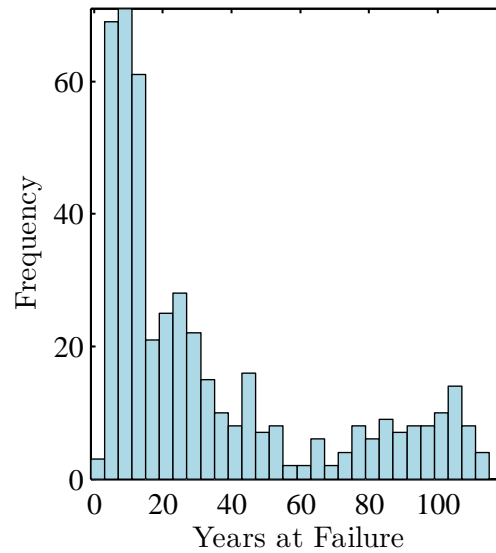


Figure 9: *Histogram of age of banks at closing date (in years). Data for failures in the US since October, 2000. Source: FDIC.*

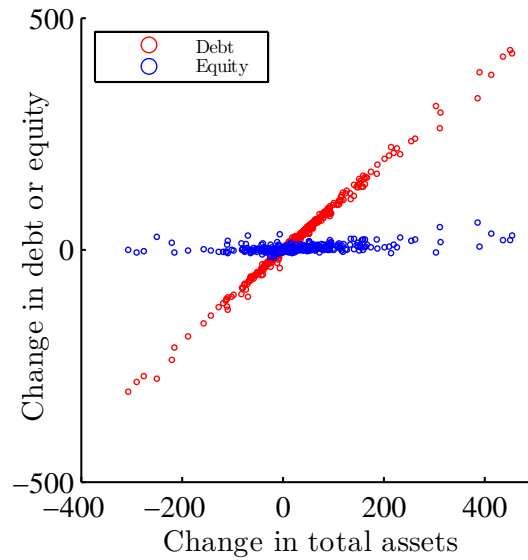


Figure 10: *Yearly changes in total asset against yearly changes in equity or debt from 1993 to 2015. Billions of USD. Source: Bankscope*

## Monetary policy shock

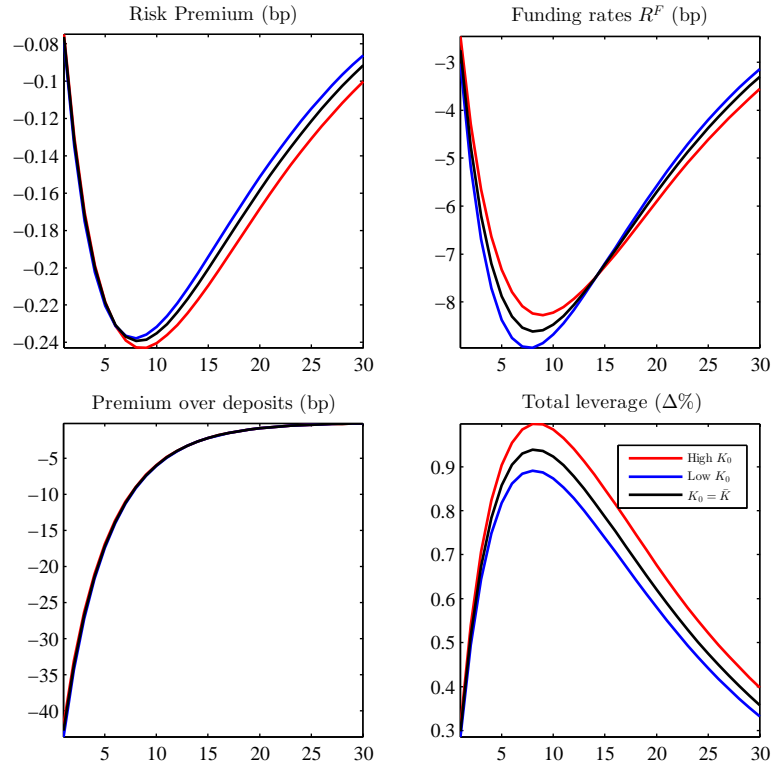


Figure 11: *Monetary policy shock of 100 basis points to  $\gamma_t$ : Financial variables*

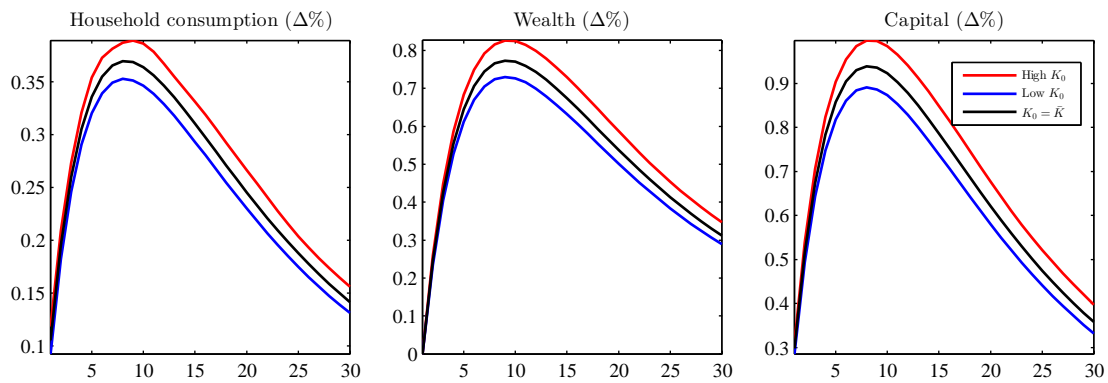


Figure 12: *Monetary policy shock of 100 basis points to  $\gamma_t$ : Real variables*

## Productivity shock

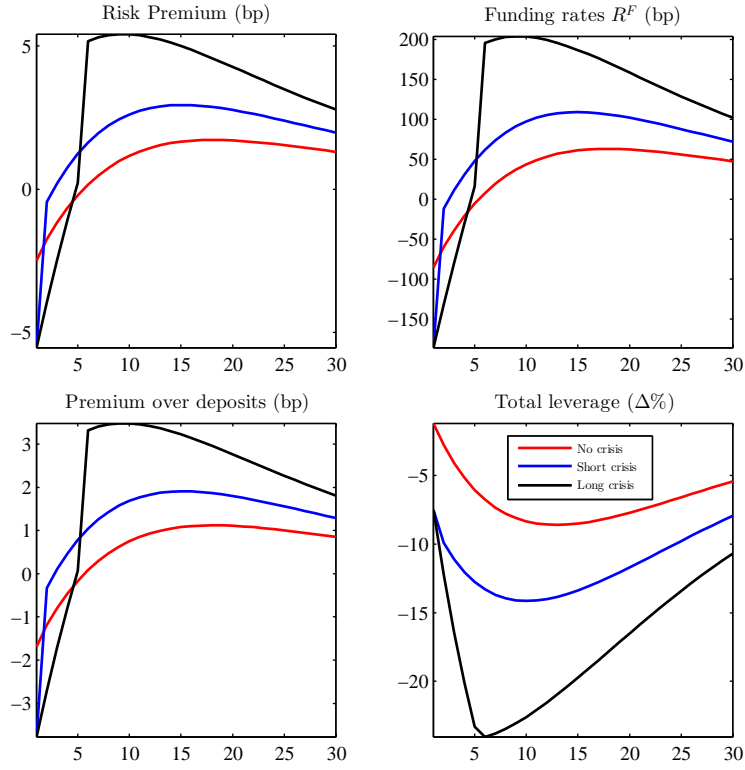


Figure 13: *Large shock to exogenous productivity: Financial variables*

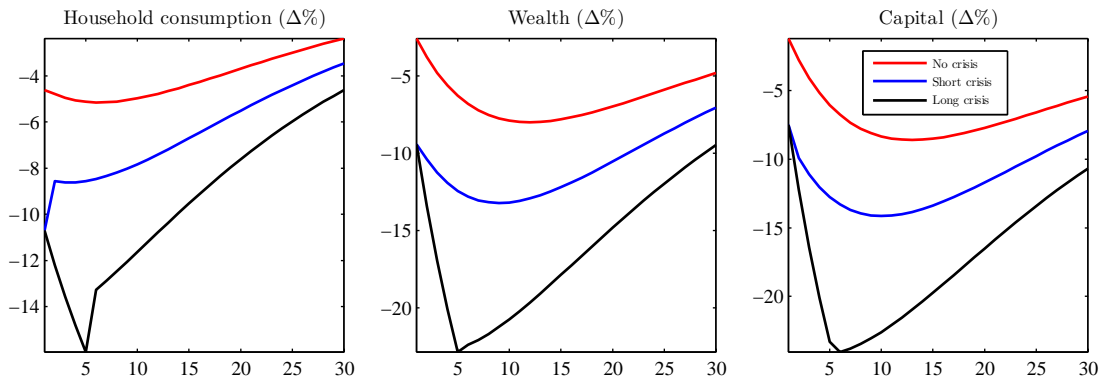


Figure 14: *Large shock to exogenous productivity: Real variables*

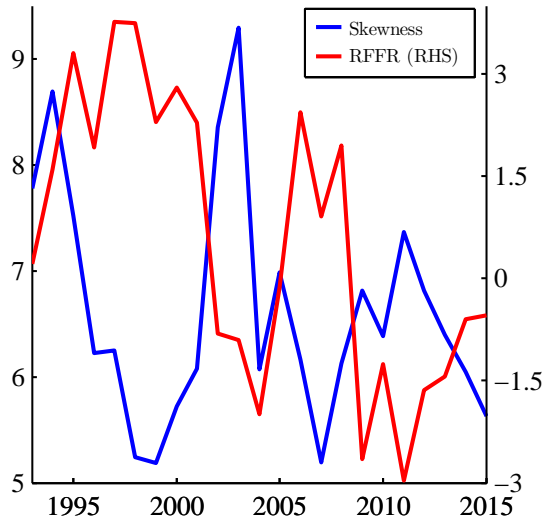


Figure 15: Time series of asset-weighted skewness of intermediary leverage (blue, LHS scale) and real (CPI deflated) Effective Fed Funds Rate (red, RHS scale) in pp.

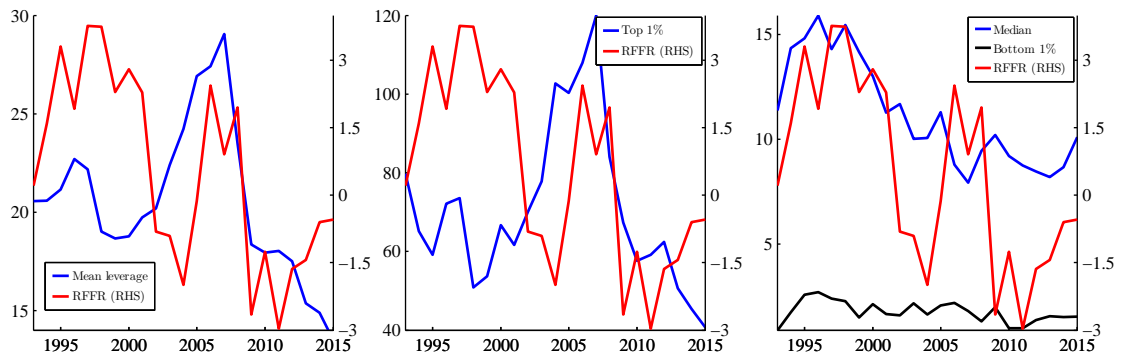


Figure 16: Mean and selected quantiles of asset-weighted leverage of intermediaries (blue, LHS scale) and real (CPI-deflated) Effective Fed Funds Rate (red, RHS scale, pp).

## Appendix A. Numerical solution method

The solution method is composed of two main blocks. The first block solves the partial equilibrium problem for a grid of points for variables  $r^f$  and  $Z^e$ . We discretize the state space using 100 nodes for  $Z^e$  and 200 for  $r^f$ . Given funding costs  $r^f$  and expected productivity  $Z^e$  we can solve jointly for equations (23) and (25), plugging in equation (19) in the latter. We also use the property that levered intermediaries never invest in storage. This gives us policy functions  $K^*(r^f, Z^e)$  and  $\alpha^{L,*}(r^f, Z^e)$ .

The second block is the recursive one. First we define the household savings problem as a function of disposable wealth  $\Omega_t$ , productivity  $\tilde{Z}_t$ , efficiency adjustment  $\Delta_t$  and monetary policy  $\gamma_t$ .

$$\Omega_t = (1 - \theta)Y_t - T_t + D_{t-1}^H + S_{t-1}^H$$

The procedure entails the following steps

1. Discretize the state space  $\mathcal{S}$  for the variables  $(\Omega, Z, \Delta, \gamma)$ . The process for  $Z$  and  $\gamma$  are approximated using a Tauchen and Hussey (1991) quadrature procedure with 11 and 7 nodes respectively. The state space for the variable  $\Omega$  is discretized using 500 nodes and we use 10 for  $\Delta$ .
2. Iterate on prices  $r^D$  and policy function  $C^*(\mathcal{S})$  starting with an initial guess  $r^D(\mathcal{S})$  for deposit prices and  $C^*(\mathcal{S})$ . For every point  $\mathcal{S}_j \in \mathcal{S}$ :
  - (a) Using the state vector and  $r_j^d$ , calculate  $r_j^f$  and  $Z_j^e$ .
  - (b) Solve for  $(K_j, \alpha_j^L)$  using  $K^*(r_j^f, Z_j^e)$  and  $\alpha^{L,*}(r_j^f, Z_j^e)$ . Back out deposit supply  $D_j$  from the balance sheet equations.
  - (c) Plug  $D_j$  in the budget constraint of the agent. Together with  $C_j = C^*(\mathcal{S}_j)$  this pins down  $S_j^H$ .
  - (d) Calculate expectations of  $(\mathcal{S}'|\mathcal{S})$  and update deposit prices and policy functions using the optimality conditions and numerical integration.
  - (e) Check for convergence. If  $\|(r'_j - r_j)\| + \|(C_j^*)' - C_j^*\|$  is smaller than a threshold value stop. Else, go back to (a) and repeat.

To numerically integrate intermediary variables, Gauss-Legendre quadrature using 51 points is used. To calculate expectations of future net disposable wealth, we also need to calculate taxes conditional on future shocks. For a given productivity draw  $Z'|Z_j$  we identify the threshold intermediary for which no bailout is needed:  $(R^K k_i - R^D d_i) = \omega$ . We can then calculate the amount  $T_t$  of taxes required by numerical integration.

## Appendix B. Proof of Proposition 2.1

When  $\mathbb{E}[R_{t+1}^K] \geq 1$ , participating intermediary  $i$  will either lever up to its Value-at-Risk constraint:  $d_{it} = \bar{d}_t^i$ , or not raise deposits at all :  $d_{it} = 0$ .

Given the option value of default and the condition  $\mathbb{E}[R_{t+1}^K] \geq 1$ , participating intermediaries will not invest in storage. The Value-at-Risk constraint bounds the maximum level of leverage of intermediary  $i$ , therefore  $d_{it} \in [0, \bar{d}_t^i]$ . The profits of intermediary  $i$  as a function of deposits are:

$$\pi_t^i(d_{it}) = \int_{\varepsilon_t^i(d_{it})}^{\infty} [R_{t+1}^K(\omega + d_t^i) - R_t^D d_t^i] dF(\varepsilon) \quad (45)$$

where  $\varepsilon_t^i$  is the max of 0 (the lower bound of the support for  $\varepsilon$ ) and the shock for which profits are zero).

$$\varepsilon_t^i(d_t^i) = \max \left( 0, \frac{\frac{R_t^D d_t^i}{\omega + d_t^i} - 1 + \delta}{\theta Z \rho^Z K_t^{\theta-1}} \right) \quad (46)$$

Taking derivatives:

$$\frac{\partial \pi_t^i}{\partial d_t^i} = \int_{\varepsilon_t^i(d_t^i)}^{\infty} (R_{t+1}^K(\varepsilon) - R_t^D) dF(\varepsilon) - \pi_t^i(\varepsilon^i) \frac{\partial \varepsilon^i}{\partial d_t^i} \quad (47)$$

**Lemma 1** *Given equations (45) and (46), then  $\pi_t^i(\varepsilon_t^i) \frac{\partial \varepsilon_t^i}{\partial d_t^i} = 0$*

This is easy to check. For any  $d_{it} \geq \frac{\omega(1-\delta)}{R_t^D - 1 + \delta}$ , then  $\pi_t^i(\varepsilon_t^i) = 0$  by definition of  $\varepsilon_t^i$ . For  $d_{it} < \frac{\omega(1-\delta)}{R_t^D - 1 + \delta}$ , then  $\varepsilon_t^i = 0$  and  $\frac{\partial \varepsilon_t^i}{\partial d_t^i} = 0$  due to the max operator.

We then have as first and second derivative:

$$\begin{aligned} \frac{\partial \pi_t^i}{\partial d_{it}} &= \int_{\varepsilon_t^i(d_t^i)}^{\infty} (R_{t+1}^K(\varepsilon) - R_t^D) dF(\varepsilon) \\ \frac{\partial^2 \pi_t^i}{\partial d_{it}^2} &= - [R_{t+1}^K(\varepsilon(d_{it})) - R_t^D] \frac{\partial \varepsilon_t^i}{\partial d_{it}} \end{aligned} \quad (48)$$

Given the monotonicity of  $R_{t+1}^K(\varepsilon)$ , then  $\forall \tilde{d}$  such that  $\frac{\partial \pi_t^i}{\partial d_{it}} \Big|_{\tilde{d}} = 0$ , it follows that  $R_{t+1}^K(\varepsilon_t^i(\tilde{d})) - R_t^D < 0$  or all elements in the integral are non-negative and it cannot be zero. Since  $\frac{\partial \varepsilon_t^i}{\partial d_{it}} > 0$ , then  $\frac{\partial^2 \pi_t^i}{\partial d_{it}^2} \Big|_{\tilde{d}} > 0$  by equation (48). If  $\tilde{d}$  exists, it must be a minimum and we therefore conclude that the maximum must be at the bounds:  $d_{it} = \arg \max \left( \pi_t(0), \pi_t^i(\bar{d}_t^i) \right)$ .



## Appendix C: Data Description

Bank balance sheet data uses annual data from the Bankscope database. Bank return data is from Datastream. Market returns were calculated using the MSCI World Index data available from Bloomberg. The Effective Federal Funds Rate is from the Federal Reserve Economic Data.

The leverage ratio is defined as the ratio of total assets to total equity, here defined as common equity. We drop negative equity from the dataset, and institutions with assets worth less than 1 million USD. We also remove institutions that have leverage larger than 1000 at least once across the sample.

For the leverage series, we compute both unweighted and weighted averages of the leverage ratio for each quarter. For the weighted average we use total assets as weights. We checked using total equity as weights and results are qualitatively unchanged. We also compute the 1st and 99th percentiles of both unweighted and weighted leverage.

For the skewness of leverage, we compute the cross-sectional standard deviation and third moment of the leverage ratio for every period. And then compute the cross-sectional sample skewness using a simple approach laid out below.

$$\begin{aligned} m_t(3) &= \frac{\sum_{i=1}^N (x_{it} - \bar{x}_t)^3}{N} \\ s_t &= \sqrt{\frac{\sum_{i=1}^N (x_{it} - \bar{x}_t)^2}{N}} \\ S_t &= \frac{m_t(3)}{(s_t)^3} \end{aligned}$$

where  $x_{it}$  is the leverage ratio of bank  $i$  in period  $t$ ,  $\bar{x}_t$  is the period-specific cross-sectional mean of leverage,  $S_t$  is the sample cross-sectional in period  $t$ ,  $s_t$  is the period-specific sample cross-sectional variance and  $m_t(3)$  the period-specific sample third central moment of the cross-section. We use this approach to the unweighted series or weighted by either total assets or total equity. We ran the same exercise using  $s_t = \sqrt{\frac{\sum_{i=1}^N (x_{it} - \bar{x}_t)^2}{N-1}}$  for robustness and there was no qualitative difference.

Year	Assets		Equity		Leverage			#Obs
	Mean	St.Dev.	Mean	St.Dev.	Mean	St.Dev.	Skewness	
1993	12419	39962	737	1930	14.71	13.77	10.67	276
1994	13725	44263	825	2179	14.81	10.95	5.47	329
1995	14638	42323	898	2200	14.33	11.16	5.73	349
1996	14278	35918	912	2109	14.82	16.26	9.48	364
1997	16778	42793	1073	2469	14.57	16.96	10.44	369
1998	18661	47154	1290	3158	13.71	10.69	5.67	392
1999	21478	64999	1526	4632	14.30	13.26	7.95	437
2000	24176	77576	1768	5599	14.04	15.11	10.79	456
2001	27648	87629	2079	6843	14.00	17.40	11.10	446
2002	28693	91765	2224	7328	14.09	25.57	13.34	458
2003	32012	103752	2414	8030	14.52	28.92	11.23	454
2004	44022	149190	3160	10731	14.58	17.96	7.65	444
2005	46877	152941	3287	10794	16.28	27.52	7.77	468
2006	56112	193439	3697	12586	15.69	24.76	8.28	422
2007	71684	245968	4458	14634	15.23	19.00	5.78	396
2008	67652	258317	4359	16032	15.59	27.13	13.73	374
2009	63755	240442	4872	17701	14.54	17.88	6.21	401
2010	66402	232329	5191	17920	12.90	11.93	4.77	448
2011	64599	235938	5318	18441	12.96	20.23	13.19	461
2012	65011	238222	5570	19317	12.51	21.56	13.29	467
2013	69559	249110	6468	22352	10.69	7.47	3.18	469
2014	70429	245651	6734	23223	10.58	7.71	4.31	475
2015	67587	228692	6923	23808	10.43	7.31	3.49	439

Table 2: Descriptive cross-sectional statistics by period (unweighted).