

NBER WORKING PAPER SERIES

CLIMATE POLICY AND LABOR MARKETS

Olivier Deschenes

Working Paper 16111

<http://www.nber.org/papers/w16111>

NATIONAL BUREAU OF ECONOMIC RESEARCH

1050 Massachusetts Avenue

Cambridge, MA 02138

June 2010

I thank Matthew Khan, Peter Kuhn, and Catherine Wolfram for their detailed comments on an earlier draft, as well as Lucas Davis and Michael Greenstone for helpful discussions. Allison Bauer provided excellent research assistance. This paper was prepared for the NBER Conference “The Design and Implementation of U.S. Climate Policy” held in Washington DC, May 13-14, 2010. The views expressed herein are those of the author and do not necessarily reflect the views of the National Bureau of Economic Research.

NBER working papers are circulated for discussion and comment purposes. They have not been peer-reviewed or been subject to the review by the NBER Board of Directors that accompanies official NBER publications.

© 2010 by Olivier Deschenes. All rights reserved. Short sections of text, not to exceed two paragraphs, may be quoted without explicit permission provided that full credit, including © notice, is given to the source.

Climate Policy and Labor Markets
Olivier Deschenes
NBER Working Paper No. 16111
June 2010
JEL No. J23,Q50

ABSTRACT

An important component of the debate surrounding climate legislation in the United States is its potential impact on labor markets. Theoretically the connection is ambiguous and depends on the sign of cross-elasticity of labor demand with respect to energy prices, which is a priori unknown. This paper provides some new evidence on this question by estimating the relationship between real electricity prices and indicators of labor market activity using data for 1976-2007. A key contribution of this analysis is that it relies on within-state variation in electricity prices to identify the models and considers all sectors of the U.S. economy rather than focusing only on the manufacturing sector. The main finding is that employment rates are weakly related to electricity prices with implied cross elasticity of full-time equivalent (FTE) employment with respect to electricity prices ranging from -0.16% to -0.10%. I conclude by interpreting these empirical estimates in the context of increases in electricity prices consistent with H.R. 2454, the American Clean Energy and Security Act of 2009. The preferred estimates in this paper suggest that in the short-run, an increase in electricity price of 4% would lead to a reduction in aggregate FTE employment of about 460,000 or 0.6%.

Olivier Deschenes
Department of Economics
2127 North Hall
University of California, Santa Barbara
Santa Barbara, CA 93106
and NBER
olivier@econ.ucsb.edu

1. Introduction:

An important component of the debate surrounding climate legislation in the United States is its potential impact on labor markets. A main concern is the displacement of jobs from the U.S. to countries without carbon pricing, especially for energy-intensive industries facing import pressure from non-regulated countries. These concerns are rooted in the long-standing debate on the effects of domestic environmental regulations on U.S. industries, although the empirical evidence regarding those effects is mixed (see e.g., Jaffe et al. 1995, Berman and Bui 2001, Greenstone 2002).

While concerns that higher energy prices will depress labor demand have received much attention in this debate, theoretically the connection is ambiguous and depends on the sign of cross-elasticity of labor demand with respect to energy prices, which is a priori unknown.¹ Evidence from studies conducted in the 1970s and 1980s indicates that energy and labor are p-substitutes, albeit weakly, suggesting that increases in energy prices lead to small *increases* in labor demand (see e.g., Hamermesh (1993) are references therein).²³ Therefore credible empirical estimates of the short-run and long-run cross-elasticities of labor demand with respect to energy prices are the key statistics required to assess the employment effects of climate policies that lead to increases in energy prices. This paper provides some new evidence on this question.

To date, most of the research on the potential effects of carbon pricing on employment has been conducted using computable general equilibrium models. The approach typically combines various aggregate data sets with sophisticated models of the U.S. economy and simulates the short-run and long-run effects of setting a price on carbon. For example, Ho, Morgenstern and Shih (2008) find that the employment effects of a \$10/ton carbon tax decline over time as the economy adjusts to the new energy prices. Taken as a whole, their analysis suggests employment effects ranging from -1% to -2%, although declines in some sectors are larger.

An alternative approach is to estimate the relationship between measures of economic activity (such as such as production and employment) and energy prices using historical data and use these estimates to predict the impact of a carbon price. In this vein, Aldy and Pizer (2009) use annual industry-level data on output, employment, and electricity prices to assess the effects of a \$10/ton tax on carbon. The advantage of this approach is that it is more transparent and does not hinge on particular assumptions about inter-sectoral and inter-temporal elasticities. Its main disadvantage is that it ignores general equilibrium effects. The findings of Aldy and Pizer suggest overall modest effects of this carbon tax, although some electricity-intensive manufacturing sectors are more severely affected.

¹ This presumes firms use other inputs in addition to labor and energy.

² Two inputs are said to be p-substitutes (p-complements) when their cross-partial elasticity of factor demand is positive (negative). So in the case of p-substitute inputs, an increase in the price of one input leads to an increase in the demand for the other.

³ There is also a long-standing macroeconomic literature on the effect of energy, and especially oil prices on economic activity (see Hamilton (2008) and Killian (2008) for recent surveys).

This paper provides new estimates of the relationship between real electricity prices and indicators of labor market activity using data for 1976-2007. While the prices of all energy sources are predicted to increase in proportion to their carbon content under carbon pricing policy, in this short article I focus only on electricity because it is the largest energy expenditure in most sectors of economy. For example, in the retail trade sector, electricity purchases correspond to roughly 2% of total production costs, but 80% of total energy costs. Thus in principle, a first-order impact channel of climate policy on labor market will be through its effect on electricity prices.

The paper contributes to the literature in two important ways. First it relies primarily on within-state variation in electricity prices for the period 1976-2007. This extends the analysis of Aldy and Pizer (2009) who utilized aggregate electricity prices for the period 1986-1994. Second, I consider all sectors of the U.S. economy (which I classify in 12 categories) rather than focusing only on the manufacturing sector. This distinction is important since the manufacturing sector now represents less than 20% of total employment in the U.S. The resulting cross-sectional and time-series variation allows me to control for unrestricted year, state, and industry shocks, as well as allowing for differential time trends across states or industry. This modeling effort is made in an attempt to minimize the confounding effects of industry-specific or state-specific permanent and/or transitory shocks that may be correlated with electricity prices. It also implicitly controls for state-specific labor demand shocks (as long they evolve 'smoothly' over time) or arbitrary year-specific shocks to labor demand (perhaps because changes in determinants of international trade such as tariffs).

The main finding is that employment rates are negatively related to real electricity prices and that the relationship is relatively weak. The cross elasticity of full-time equivalent (FTE) employment with respect to electricity prices ranges from -0.10% to -0.16%. By comparison, the average annual change in FTE employment (normalized by population) over the sample period is about 1.5%, so the fluctuations in employment caused by electricity price shocks are well within the range of the normal historical variation. The estimated elasticities are precise with confidence intervals that rule out large short-run declines in employment. Although not reported in detail here, an industry-level analysis also reveals that employment in some industries (agriculture, transportation, finance, insurance and real estate) is more responsive to changes in electricity prices. Notably these industries only make up 15% of total employment.

I then interpret these estimates in the context of predicted increases in electricity prices that are consistent with H.R. 2454, the American Clean Energy and Security Act of 2009. To this end, I use the empirical estimates to simulate the short-run employment response to higher electricity prices. The preferred estimates in this paper suggest that in the short-run, an increase in electricity price of 4% would lead to a reduction in aggregate FTE employment of about 460,000 or 0.6%.

There are several caveats to this research and its results that need to be emphasized. First, since the analysis is based on annual variation in electricity prices, it is only relevant for evaluating the short-run employment effects of a possible carbon policy. These short-run effects will be important determinants of the initial transition costs associated with a climate policy. However, the short-run response to a permanent change in electricity price caused by a carbon pricing policy will likely differ from the short-run response to transitory changes in electricity price that are measured in this paper. In addition, the long-run effects will presumably be smaller in magnitude once all the adjustments to the capital stock are made and the sectoral reallocation of labor takes place. Third, estimates based on historical data are dependent on the set of events, institutions, and regulations that applied during the period observed. As such, these estimates may not be applicable to the ‘new’ economic environment that would follow climate legislation. Fourth, the observed historical variation in electricity prices may not overlap with the higher energy prices caused by a specific carbon pricing policy, and so prediction of its effects may depend on functional form projections. Finally, this analysis does not quantify the effect of the policy incentives that could increase employment in ‘green’ sectors. In addition, many climate legislation proposals, such as H.R. 2454, contain provisions for job assistance programs aimed at workers displaced by the policy, and industry-specific subsidies designed to counter some of the added costs imposed by the policy. It is possible that such provisions will cause increases in labor demand in some sectors and this possibility is not accounted for in this analysis.

2. Conceptual Framework

A natural starting point to conceptualize the effect of energy prices on labor markets is the neoclassical theory of labor demand. In a model where labor and energy are factors of production (along with other factors), the cross-elasticity of labor demand with respect to

energy prices is given by $\eta_{LE} = s_E \times \left(\sigma_{LE} - \frac{\rho}{\rho - \theta} \right)$ where s_E is the share of energy in total

production costs, σ_{LE} is the partial elasticity of substitution between labor and energy, ρ is a measure of market power of the firm (=1 if the firm is a price-taker in the product market, and >1 if the firm is a price-maker), and θ measures the degree of homogeneity of the production function (see Cahuc and Zylberberg 2004 for derivations). The first term in the parentheses is the substitution effect (which may positive or negative in this case) and the second term is the scale effect (which declines in magnitude as the degree of market power increases). This formula has two key implications: (1) the cross-elasticity of labor demand with respect to energy prices is likely to be small since s_E is small for most industries; (2) the sign of η_{LE} will depend on whether the substitution or the scale effect dominates.

The expression above also highlights three key sources of variation in the cross elasticity of labor demand to energy price across industries. First, there are differences in energy intensity (i.e. s_E) across industries. Second, there may be differences in market power across industries that determine the degree to which firms in a sector can pass the extra costs associated with the policy to the buyers of their products (either as intermediary inputs, or as final demand). For example, sectors producing goods that face low import pressure are less likely to be affected by

carbon pricing, at least in the short run. Finally, differences in the production technology (i.e. σ_{LE}) across sectors will also contribute to differences in the responsiveness of labor demand to shocks to energy prices.

3. Data Sources and Preliminary Analysis:

A. Data

The primary data for this paper are taken from the 1977-2008 March Current Population Surveys (CPS), and covers calendar years 1976-2007.⁴ Importantly, the March CPS contains information about labor force outcomes (employment status, hours worked, weeks worked in the last year), as well as information on industry affiliation at the three-digit level. Starting in 1976, weeks of work are reported continuously, which explains the choice of the sample period. In addition, the March CPS contains demographic information including state of residence, age, gender, race, education, etc. The state of residence information will be used in conjunction with the survey year to link the CPS with the electricity price data.

The annual worker-level data are then combined with retail electricity prices from the State Energy Data System (SEDS) maintained by the Energy Information Administration. The SEDS data is detailed, and contains prices and expenditures for a dozen primary energy sources (i.e. coal, natural gas, etc), as well as 'transformed' energy sources, such as retail electricity and total energy at the state-year level. The retail electricity price data from SEDS are then merged with the micro-level CPS data by year and state of residence to construct the final samples used in the analysis.

B. Sample Construction and Key Variables:

For the purpose of this analysis, I consider individuals aged 16-65, working for pay (i.e. not self-employed), and residing in the continental United States. I then use the micro data to derive the number of full-time equivalent (FTE) workers. The approach could be extended to other measures of labor supply, such as total hours worked, number of part time workers, etc. In practice there is a tradeoff between a fine industry classification (which provides a better characterization of the production technology in which a worker is employed) and statistical precision (because of empty or small cells) and so for this paper, I consider a 12-industry classification.⁵ Full-time equivalent employment is obtained by summing annual hours worked in each state-year-industry cell, and then dividing by 2080 (40 hours per week * 52 weeks per year). In all cases, I use the CPS person weight (perwt) variable for these calculations.

C. Preliminary Analysis:

The formula for the cross elasticity of labor demand with respect to energy price highlights that a mandated carbon price is likely to have differential effects across industries, reflecting in part

⁴ These data were accessed through IPUMS (<http://cps.ipums.org/cps/>).

⁵ The industry classification are Agriculture & Natural Resources, Mining, Construction, Durable Goods, Non-Durable Goods, Transportation, Utilities, Wholesale Trade, Retail Trade, Finance, Insurance and Real Estate (FIRE), Services, and Public Administration.

differences in energy intensity. Unfortunately there are no comprehensive and comparable sources of data on electricity intensity available for each sector of the economy.⁶ Instead, I report energy shares (defined as the ratio of the value of energy inputs over the value of all intermediate inputs and employee compensation) from the Bureau of Economic Analysis 2002 Industry Accounts data.

Figure 1 reports the energy shares for each of the 12 industry categories considered in the empirical analysis below.⁷ While there are evident differences in energy shares across sectors (ranging from less than 1% in the FIRE sector to 22% in the utility sector), for most sectors, and most of the employment, the energy share is 3% or less. In fact, the FTE weighted share across the 12 sectors is 2.6%. And since electricity is one of many possible sectoral energy inputs, these shares are upper bounds on the actual electricity shares (s_E). As such, this evidence, in connection with the theoretical formula above foreshadows that the cross-elasticity of employment with respect to electricity price is likely to be small.

Figure 2 presents a first look at the connection between real electricity prices and FTE employment over the period 1976-2007. The full line shows the yearly average of residuals from a regression of real electricity prices (in \$2005 per kWh) on a quadratic time trend and unrestricted state effects. Similarly, the dashed line displays the yearly average of residuals from a regression of log FTE employment on a quadratic time trend and unrestricted state effects. The connection is remarkable: each period of higher than average electricity prices is accompanied by lower than average employment, especially in the early 1980s and late 1990s. In fact, the raw correlation between the two series is -0.77. This evidence clearly suggests the existence of a relationship between FTE employment and electricity prices. The regression analysis below will quantify and refine the magnitude of relationship by including more variables in order to control for unobserved shocks correlated with electricity price and labor demand.

4. Regression analysis:

In order to estimate the cross-elasticity of labor demand with respect to electricity prices I consider group-level regression models of the form:

$$(1) \text{Log}(Y_{st}) = \alpha_s + \alpha_t + \beta \text{Log}(P_{st}) + X_{st}\gamma + \varepsilon_{st}$$

Where Y_{st} represents employment in state s and observed in year t . The parameters α_s and α_t are fixed effects for state (s) and year (t). In some models, these fixed effects are also augmented by state-specific time trends. The key variable is P_{st} , the average retail electricity price in dollar

⁶ For example, the Manufacturing Energy Consumption Survey (MECS) contains detailed information on electricity consumption in the manufacturing sector, but by definition this covers only roughly 20% of U.S. workforce. Similarly, the Survey of Business Expenses omits the agricultural, utilities, and public administration sectors.

⁷ The BEA data appears to slightly undercount energy inputs in some of the durable and non-durable manufacturing sectors. For these two sectors I use instead energy shares computed from the 2002 MECS data.

per kWh in state s and year t (deflated to 2005 dollars). β is the parameter of central interest in this paper: it measures the percentage change in employment associated with a one percent change in real electricity prices. Table 1 below reports estimates of this cross elasticity for various specifications. The vector X_{st} contains the control variables, most importantly the size of the 16-65 population in the relevant cell. In addition to the specification in (1), I also consider alternative models where the year effects are replaced with a quadratic time trend and where industry fixed effects and industry-specific time trends are included. The last term in equation (1), ε_{st} is an error term. Throughout the paper the standard errors are corrected to allow for arbitrary within-state serial correlation.

Once the cross-elasticity of employment with respect to electricity price is estimated from (1), we can predict the impact of a particular climate policy on employment by multiplying the β coefficient by the predicted increase in electricity price. For example, the predicted change in FTE employment would be calculated as follows:

$$(2) \quad \% \Delta FTE = \hat{\beta}_{FTE} \times \Delta P$$

The credibility of this approach depends on the assumption that the estimation of equation (1) will produce unbiased estimates of the β parameter. The key assumption is that there are no residual labor demand shocks that are correlated with electricity price once we control for year, state, and industry fixed effects as well as industry-specific and state-specific time trends. This is a strong assumption, for example, it rules out state-specific labor demand shocks that do not evolve smoothly over time. Below I further discuss the limitations of the empirical estimates produced by this analysis.

(A) Cross-Elasticity of FTE Employment With Respect to Real Electricity Prices

Table 1 reports empirical estimates of the coefficient β in equation (1). In all models FTE employment and electricity prices are expressed in logs, so the reported coefficients correspond to the effect of a 1% change in electricity price on %FTE employment. Row A is based on state*year cells and ignores the variation in employment due to differences across states (and/or over time) in industry composition. Estimates in column (1) are based on models including a quadratic time trend and state fixed effects, column (2) replaces the quadratic time trend with year fixed effects and column (3) adds state-specific time trends to the specification. It is the more general model considered, and allows for differential shocks to labor demand in each state, provided that these shocks evolve smoothly enough. Estimates in Row B are based on state*year*industry cells but restrict the impact of electricity price on employment to be the same across industries. The specification of the models in columns (1)-(3) of Row B remains the same, with the exception that industry fixed-effects are included in all specifications, and industry-specific time trends are added to the models in column (3).

The estimates are negative in all specifications and statistically significant in most. This indicates that increases in electricity prices lead to reductions in FTE employment and suggest

that labor and electricity prices are p-complement. However, the cross-elasticities are relatively small: The largest point estimate in absolute magnitude is -0.156 and its 95% confidence interval ranges from -0.234 to -0.078. The preferred estimates in column (3) indicate that a 1% change in electricity price will lead to a -0.13% to -0.12% reduction in FTE employment. By comparison, the average annual change in FTE employment (normalized by population) over the sample period is about 1.5%, so the fluctuations in employment caused by electricity price shocks are well within the range of the normal historical variation.

Although not reported in Table 1, I also estimated the impact of electricity prices on FTE employment separately for each of the 12 industry categories considered. With the caveat that this analysis lacks the statistical precision of Table 1, it is notable that higher electricity prices lead to a reduction in FTE employment in most industries. The most affected industries are agriculture, transportation, and FIRE. The cross-elasticities for those three sectors are -0.426, -0.385, and -0.291, respectively and are statistically significant at the conventional level. However these are smaller industries in terms of overall employment, representing about 15% of total employment in U.S. over the sample period. There is a positive correlation between electricity prices and FTE employment in the mining and utilities sector, although the point estimates are not statistically significant.

Although not reported here, I have also considered alternative specifications of equation (1), notably to allow for nonlinearities and lagged effects of electricity prices on employment. In general, these considerations did not alter the main results significantly.⁸ It is also worth noting that the analysis presented in Table 1 could be extended to provide information about the “incidence” of electricity price shocks by examining responses specific to demographic groups or geographical areas.

(B) Implication for Climate Policy

While the estimated cross-elasticities appear small, their implications on the possible aggregate employment effects of a climate policy may be more sizable. To put this in context, I evaluate the predicted aggregate employment effects associated with an increase in electricity price similar to the increase that would be caused by a climate policy like H.R. 2454, the American Clean Energy and Security Act of 2009.

To this end, I use the estimated cross-elasticities in Row A of Table 1 to simulate the short-run employment response to an increase in electricity price of 4%. This price increase is consistent with the projections from the Energy Information Administration (2009) about future electricity prices under H.R. 2454. The resulting predicted changes in FTE employment are reported in Row C of Table 1. Across the three specifications the estimates range from reductions of 510,000 to 335,000 in FTE employment. By comparison, the average aggregate FTE employment in the sample is about 87 million. The preferred estimate in column (3) is -460,215 with a standard error of 111,567. It is worth noting that the predicted employment effects are a linear function

⁸ Blanchard and Gali (2007) report that the effect of oil prices on aggregate employment has declined over time.

of the estimated cross elasticity and therefore could be implemented for alternative scenarios regarding future electricity prices under any specific climate policy.

(C) Possible Sources of Bias in Cross-Elasticity Estimates

It is possible that the estimates reported in Table 1 are biased if there omitted factors in the regression models that are correlated with both electricity prices and labor demand. This bias would invalidate the results of this analysis, including the employment projections associated with specific climate policies.

A key issue is that within-state variation in electricity price provides the key identifying variation for the empirical analysis and within-state electricity price changes are likely to be caused by many factors, including changes in regulator behavior, capacity constraints, changes in the relative price of primary energy inputs, etc. As such, these price shocks may be caused in part by factors related to labor demand in a way that is not controlled for by the year fixed effects and state-specific time trends included in the empirical models. This could occur if the electricity pricing rule used by the utility regulators sets prices to equate average costs to average revenues. Since revenues depend on electricity sales, which may in turn depend on labor market conditions, this pricing rule may imply a reverse causality relationship from employment to electricity prices. As a consequence this would lead to biased estimates of the cross-elasticity of employment with respect to electricity prices and this bias is difficult to sign a priori.

A common solution to this problem is to rely on instrumental variables that are correlated with electricity prices but otherwise uncorrelated with labor demand. One possibility would be to use changes in relative prices of primary energy inputs used in producing electricity interacted with physical production capacity by fuel type in each state as instrumental variables for electricity prices. While a complete implementation is beyond the scope of this paper, it is an approach I am undertaking in continuing work.

4. Implications and Concluding Remarks

Taken literally, the preferred estimates in this paper suggest that in the short-run, an increase in electricity price of 4% would lead to a reduction in aggregate FTE employment of about 460,000 or 0.6%. This estimate corresponds to the first-year response to higher electricity prices assuming firms did not anticipate the rise in electricity costs and that no production subsidies are given to sectors most affected by the introduction of a price on carbon. In reality, it is probable that a carbon pricing policy will be phased in gradually and accompanied with subsidies to selected sectors. Such adjustment mechanisms should reduce some of the employment loss predicted by the approach in this paper.

By comparison, the important recession that started in December of 2007 caused the number

employed nationally to decline by 3.1 million between December 2007 and 2008.⁹ Using this recent experience as a benchmark, it appears that climate policies that lead to increases to electricity price of 3-4% will lead to significant but not unprecedented employment loss.

There are many limitations to this research and its results need to be interpreted with caution. In my view the most significant limitation is that the approach taken here is only informative about the short-run effect of transitory shocks to electricity prices, and so ignores general equilibrium effects. Information about the differential dynamic adjustment paths across industries is essential to evaluate the full extent of the implications of climate legislation on labor markets. Insights into this question can be obtained by considering dynamic general equilibrium models.

⁹ Laura A. Kelter: "Substantial job losses in 2008: weakness broadens and deepens across industries," Monthly Labor Review, March 2009.

References:

Aldy, J. and W. Pizer (2009): "The Competitiveness Impacts of Climate Change Mitigation Policies," Pew Center on Global Climate Change

Berman E., and L. Bui (2001): "Environmental Regulation and Labor Demand: Evidence from the South Coast Air Basin," *Journal of Public Economics*, 79, pp: 265-295

Blanchard O. J., and J. Gali (2007): "The Macroeconomic Effects of Oil Price Shocks: Why are the 2000s so different from the 1970s?," in: *International Dimensions of Monetary Policy*, National Bureau of Economic Research.

Cahuc P., and A. Zylberberg (2004): *Labor Economics*, MIT Press.

Energy Information Administration (2009): "Energy Market and Economic Impacts of H.R. 2454, the American Clean Energy and Security Act of 2009,"

Greenstone, M. (2002): "The Impacts of Environmental Regulations on Industrial Activity: Evidence from the 1970 and 1977 Clean Air Act Amendments and the Census of Manufactures," *Journal of Political Economy*, 110(6): pp. 1175-1219

Hamermesh, D. (1993): *Labor Demand*, Princeton University Press, Princeton NJ.

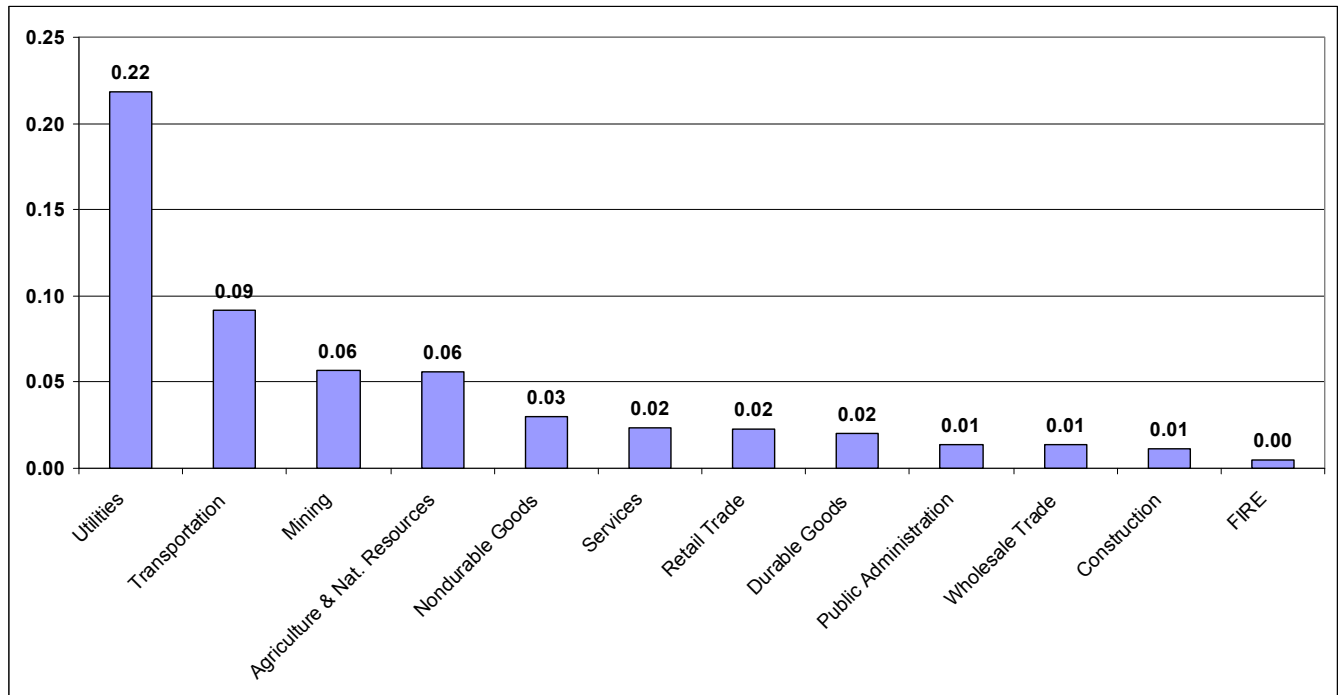
Hamilton, J. (2008): "Oil and the Macroeconomy," *The New Palgrave Dictionary of Economics*, Second Edition, eds. S. Durlauf and L. Blume, New York: Palgrave Macmillan.

Ho, M., R. Morgenstern, and J. Shih (2008): "Impact of Carbon Price Policies on U.S. Industry," Resources for the Future Discussion Paper 08-37

Jaffe, A., S. Peterson, P. Portney, and R. Stavins (1995): "Environmental Regulation and the Competitiveness of U.S. Manufacturing: What Does the Evidence Tell Us?" *Journal of Economic Literature*, 33(1): pp. 132-163

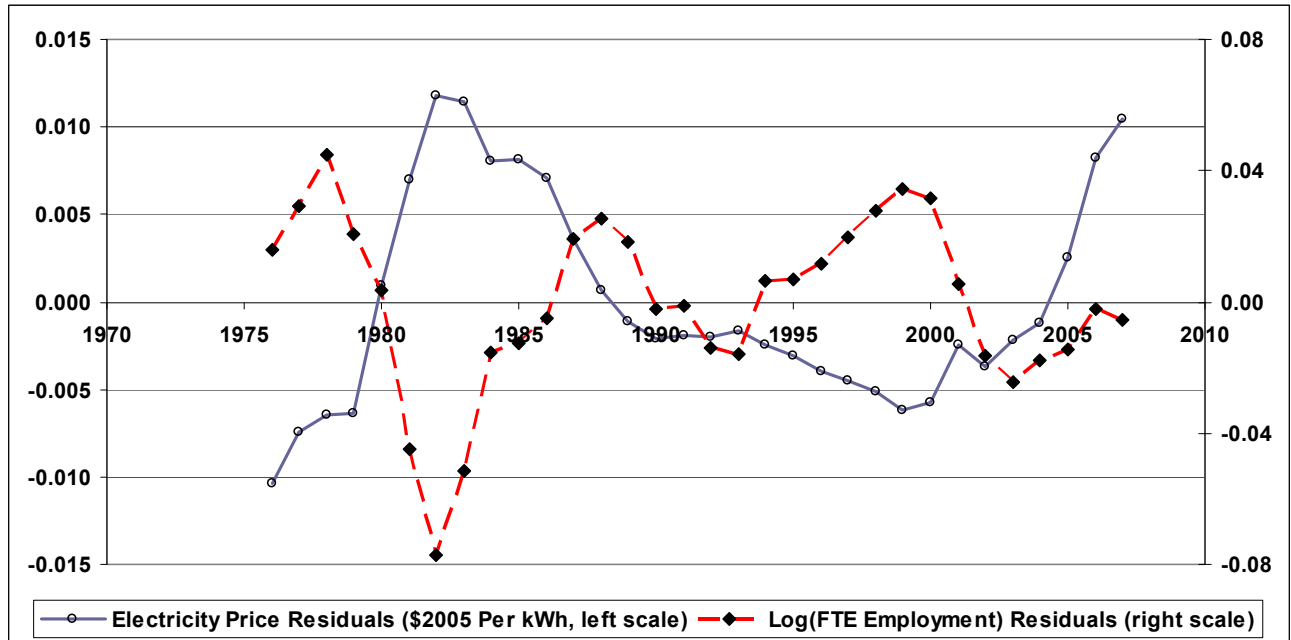
Killian L. (2008): "The Economic Effects of Energy Price Shocks," *Journal of Economic Literature*, 46(4): pp. 871-909.

Figure 1: Share of Energy in Total Production Costs, 2002



Notes: Tabulations from the Bureau of Economic Analysis 'Industry Economic Accounts' for 2002. See the text for more details.

Figure 2: Residual Relationship Between Real Electricity Prices and FTE Employment



Notes: Residuals from regressions based on 1,568 state*year observations. Each model controls for a quadratic in year and state fixed effects. Reported in the figure are the yearly averages of the residuals from these regressions. See the text for more details.

Table 1: Estimates of Cross-Elasticity of Full Time Equivalent Employment With Respect to Real Electricity Prices

	(1)	(2)	(3)
A. Based on State*Year Cells			
<i>Cross Elasticity of FTE Employment</i>	-0.147 (0.031)	-0.096 (0.036)	-0.132 (0.032)
B. Based on State*Year*12 Industry Cells			
<i>Cross Elasticity of FTE Employment</i>	-0.156 (0.039)	-0.097 (0.052)	-0.119 (0.064)
C. Predicted FTE Employment Effect of 4% Increase in Electricity Prices (based on estimates in Panel A.)	-512,513 (108,081)	-334,702 (125,513)	-460,215 (111,567)
Quadratic in Year	yes	no	no
Year Fixed Effects	no	yes	yes
State Fixed Effects	yes	yes	yes
State-Specific Time Trends	no	no	yes
Industry Fixed Effects (Panel B only)	no	no	yes
Industry-Specific Time Trends (Panel B only)	no	no	yes

Notes: Cross-elasticity estimates are from models based on 1,568 state*year cells (Row A) and 18,471 state*year*industry cells (Row B). Each model controls for the log of 16-65 population in addition to the variables listed at the bottom of the table. Predicted FTE employment effects assume a 4% increase in electricity prices are evaluated at the sample average of aggregate FTE employment in the sample period (87,162,000). The standard errors in parentheses are corrected for within-state serial correlation. See the text for more details.