

NBER WORKING PAPER SERIES

WHEN IS IT OPTIMAL TO ABANDON A FIXED EXCHANGE RATE?

Sergio Rebelo
Carlos A. Vegh

Working Paper 12793
<http://www.nber.org/papers/w12793>

NATIONAL BUREAU OF ECONOMIC RESEARCH
1050 Massachusetts Avenue
Cambridge, MA 02138
December 2006

We thank L. Goldberg, P. O. Gourinchas, M. Klein, A. Razin, and seminar participants at the NBER, Federal Reserve Bank of New York, Maryland, Princeton, and University of Pennsylvania for their comments. We are particularly grateful to R. Flood, F. Zilibotti, and two anonymous referees for their suggestions. Financial support from the National Science Foundation and UCLA Academic Senate is gratefully acknowledged. The views expressed herein are those of the author(s) and do not necessarily reflect the views of the National Bureau of Economic Research.

© 2006 by Sergio Rebelo and Carlos A. Vegh. All rights reserved. Short sections of text, not to exceed two paragraphs, may be quoted without explicit permission provided that full credit, including © notice, is given to the source.

When Is It Optimal to Abandon a Fixed Exchange Rate?

Sergio Rebelo and Carlos A. Vegh

NBER Working Paper No. 12793

December 2006, Revised September 2007

JEL No. F31

ABSTRACT

The influential Krugman-Flood-Garber (KFG) model of balance of payment crises assumes that a fixed exchange rate is abandoned if and only if international reserves reach a critical threshold value. From a positive standpoint, the KFG rule is at odds with many episodes in which the central bank has plenty of international reserves at the time of abandonment. We study the optimal exit policy and show that, from a normative stand- point, the KFG rule is suboptimal. We consider a model in which the fixed exchange rate regime has become unsustainable due to an unexpected increase in government spending. We show that, when there are no exit costs, it is optimal to abandon immediately. When there are exit costs, the optimal abandonment time is a decreasing function of the size of the fiscal shock. For large fiscal shocks, immediate abandonment is optimal. Our model is consistent with evidence suggesting that many countries exit fixed exchange rate regimes with still plenty of international reserves in the central bank's vault.

Sergio Rebelo

Kellogg Graduate School of Management

Northwestern University

Leverone Hall

Evanston, IL 60208-2001

and NBER

s-rebelo@northwestern.edu

Carlos A. Vegh

Department of Economics

Tydings Hall, Office 4118G

University of Maryland

College Park, MD 20742-7211

and NBER

vegh@econ.bsos.umd.edu

1. Introduction

Consider an open economy with a fixed exchange rate that suffers an unexpected fiscal shock. This shock consists of an increase in government expenditures that has to be financed with seignorage. When, if at all, should the fixed exchange rate regime be abandoned? Further, suppose that, with some probability, a future fiscal reform or a financial package from the International Monetary Fund (IMF) can restore the sustainability of the fixed exchange rate regime. For how long should policy makers wait for this scenario to materialize?

The decision to exit a fixed exchange rate regime is one of the most important policy issues in open-economy macroeconomics. A recent case in point is Argentina's abandonment in early 2002 of its 10-year old "Convertibility plan" that had tied the peso to the U.S. dollar at a one-to-one rate since April 1991. Most analysts agree that fixing the exchange rate was an effective strategy to eliminate runaway inflation. However, in the mid 1990s, as the fiscal situation began to deteriorate, the question of whether Argentina should abandon the fixed exchange rate began to surface with increasing frequency.¹ The IMF rescue packages of December 2000 and August 2001 bought Argentina some time but, in the end, the fixed exchange rate had to be abandoned in January 2002.

Economic theory offers surprisingly little guidance as to the optimal time to exit a fixed exchange rate regime. The dominant paradigm for understanding this issue is the model proposed by Krugman (1979) and Flood and Garber (1984), which we refer to as the KFG model. This model, which builds on work by Salant and Henderson (1978), makes two central assumptions. The first is that the root cause of the eventual abandonment of the fixed exchange rate is an unsustainable fiscal policy. The second assumption is that the central bank follows an ad-hoc exit rule, whereby the fixed exchange rate regime is abandoned only when the central bank exhausts its foreign exchange reserves and its ability to borrow.

To study the empirical plausibility of these two hypotheses, Table 1 collects

¹ See Mussa (2002) for a detailed analysis of Argentina's lax fiscal policy during the mid 1990s.

data for 51 episodes in which fixed exchange rate regimes were abandoned. Such episodes are typically referred to as “currency crises.” These episodes were selected from an updated version of Kaminsky and Reinhart’s (1999) list of crisis episodes according to the criteria outlined in Appendix 7.1. Table 1 reports the change in the exchange rate in the month in which the fixed exchange rate regime was abandoned, as well as the change in the exchange rate in the 12 months before and after the abandonment.² Table 1 also reports the rate of change in real government spending in the three years prior to the crisis and the reserve losses that occurred in the 12 months prior to the crisis.

We view the fiscal data in Table 1 as lending empirical support to the first KFG assumption. There were increases in real government spending in the three years prior to the abandonment of the peg in 80 percent (37 out of 46) of the episodes for which we have fiscal data. Therefore, fiscal shocks are plausible suspects as the root cause of the decision to abandon a fixed exchange rate.

On the other hand, we think of the reserve-loss data in Table 1 as suggesting that the second KFG assumption is empirically implausible. While the KFG model is not explicit about the critical lower bound for international reserves (is it zero? is it negative?), it is clearly in the spirit of the model that the monetary authority holds on to the peg for as long as it can. We would thus expect to see central banks exhaust their international reserves before the fixed exchange rate is abandoned. Figure 1 depicts a histogram of the fraction of initial reserves lost during the 12 months prior to the crisis. In 12 out of 51 episodes, countries had non-positive reserve losses (i.e., they gained reserves). In 38 out of the 51 episodes (or roughly 75 percent), reserve losses were less than 40 percent of initial reserves. While there were cases in which the monetary authority was willing to lose a large amount of reserves before devaluing, in most cases the peg was abandoned with plenty of ammunition left in the central bank’s coffers. In other words, the evidence suggests that the monetary authority *chooses* to devalue as opposed

²In some of the episodes included in Table 1 the exchange rate was not literally fixed but followed a crawling peg or fluctuated within a narrow band.

to *being forced* to devalue by literally exhausting its reserves and its ability to borrow. We conclude that the KFG exit rule, a critical component of the KFG model, is inconsistent with the empirical behavior of reserves in countries that have abandoned fixed exchange rates. In addition, and given that it assumes an exogenous exit rule, the KFG model is unsuitable for understanding the decision to abandon a fixed exchange rate regime.

In this paper, we study the optimal exit from a fixed exchange rate regime.³ Our analysis is in the spirit of the literature on optimal monetary and fiscal policy pioneered by Lucas and Stokey (1983). We argue that the assumption that central bankers choose the optimal time to abandon the peg generates empirical implications that are more plausible than those associated with the KFG exit rule.⁴

Our analysis is based on a standard cash-in-advance small-open-economy model, extended to incorporate rational policymakers. We first consider the case where there are no costs of abandoning the peg. In this case it is optimal to abandon the peg as soon as the fiscal shock occurs and without incurring any reserve losses. This policy is optimal independently of the level of international reserves and of whether the central bank faces a borrowing constraint.

We then consider the case in which there are costs of abandoning the peg. These exit costs can reflect, for instance, output losses or the cost of bailing out the banking system.⁵ We choose to abstract from the source of these costs and simply assume that devaluing entails some fiscal and social cost. In this case, there is a certain threshold value for the fiscal shock beyond which it is optimal to

³Lahiri and Végh (2003) and Flood and Jeanne (2005) study whether it is feasible and/or optimal to delay the abandonment of the fixed exchange rate regime (i.e., to “defend the peg”). However, they continue to assume that abandonment is governed by the KFG rule. Pastine (2002) considers an optimizing policymaker who is posited to dislike reserve losses and prefers fixed to floating exchange rates into an otherwise standard KFG model.

⁴While second-generation models of speculative attacks introduce an optimizing central banker (Obstfeld (1986)), they assume that currency crises do not have a fiscal origin.

⁵See Kaminsky and Reinhart (1999) and Gupta, Mishra, and Sahay (2007) for evidence on output and banking crises during currency crises.

abandon immediately, thus incurring no reserve losses. For fiscal shocks smaller than this threshold, the optimal exit time is a decreasing function of the size of the fiscal shock. In other words, the smaller the fiscal shock, the longer is the optimal delay.

Intuitively, the optimal exit time results from the trade off between two factors. For a given fiscal shock, delaying the abandonment of the peg reduces the present discounted value of the cost of abandoning. However, a longer delay requires a permanently higher level of inflation once the peg is abandoned. This increase in the post-abandonment rate of inflation produces a larger intertemporal distortion in consumption decisions. For large fiscal shocks, the cost of delaying (i.e., the larger intertemporal distortion) dominates because the gain from delaying is bounded by the economy's resources.

We then present some back-of-the-envelope calculations based on our model, the fiscal data in Table 1, and empirical estimates of the cost of balance of payment crises. These calculations suggest that immediate abandonment should be at least as common as delayed abandonment. Our model is therefore consistent with the observation that many pegs are abandoned when there are still plenty of international reserves at the central banks' disposal.

To study the theoretical robustness of our results, we then consider four extensions of the basic model: (i) time-varying exit costs, (ii) social, but non-fiscal, costs of abandoning the peg, (iii) more general preferences, and (iv) the case in which the exist cost depends positively on the fiscal shock itself. In every single case, our main results go through which attests to the theoretical robustness of the paper's main message.

We then consider a stochastic version of our model in which the costs of abandoning arise endogenously. There are no fiscal or social exit costs but fiscal fundamentals are random. These fundamentals are governed by a stochastic process that captures the idea that a fiscal reform is more likely to occur while the economy has a fixed exchange rate. In particular, we assume that, while the exchange rate is fixed, there may be a fiscal reform that restores the sustainability of the

fixed exchange rate.⁶ This reform arrives according to a Poisson process. Once the economy abandons the fixed exchange rate regime, there is no hope of a fiscal reform and the initial fiscal shock must be financed with seignorage revenues. There is thus an *option value* to maintaining the peg. In this context, the cost of abandoning the peg consists in giving up this option value. We show that there is a close connection, both formally and in terms of the properties of the optimal exit time, between this model and our benchmark model. In the stochastic model there is also a threshold value of the fiscal shock above which it is optimal to abandon as soon as the fiscal shock occurs. For shocks with values below this threshold, there is a negative relation between the size of the shock and the optimal exit time.

The paper proceeds as follows. Section 2 introduces the model. Section 3 derives the basic results for the deterministic case. Section 4 examines the theoretical robustness of our results. Section 5 develops and solves the stochastic version of the model. Section 6 concludes.

2. The Basic Model

Consider a standard, optimizing, small-open-economy model in which money is introduced via a cash-in-advance constraint. All agents, including the government, can borrow and lend in international capital markets at a constant real interest rate r . There is a single consumption good in the economy and no barriers to trade. The law of one price holds: $P_t = S_t P_t^*$, where P_t and P_t^* denote the domestic and foreign price level, respectively. The exchange rate, S_t , is defined as units of domestic currency per unit of foreign currency. For convenience we assume that $P_t^* = 1$; hence $P_t = S_t$.

Before the fiscal shock occurs at time $t = 0^-$, the exchange rate is fixed at a level S . For $t < 0$, the economy has a sustainable fixed exchange rate regime and the government can satisfy its intertemporal budget constraint without resorting

⁶See Flood, Bhandari, and Horne (1989) and Rigobon (2002) for analyses that also emphasize the link between fixed exchange rates and fiscal discipline.

to seignorage. At $t = 0$ the economy suffers a ‘fiscal shock’: an increase in government spending that must be financed with seignorage revenues. Generating these revenues requires abandoning the fixed exchange rate regime at some point in time. Denote by T the time at which the fixed exchange rate regime is abandoned. We wish to solve for the optimal value of T , which we denote by T^* .

2.1. Households

The representative household maximizes its lifetime utility, V , which depends on its consumption path, c_t :

$$V \equiv \int_0^\infty \log(c_t) e^{-\rho t} dt. \quad (2.1)$$

The discount factor is denoted by ρ . The household’s flow budget constraint is

$$\begin{aligned} \Delta b_t &= -(M_t - M_{t-})/S_t, & \text{if } t \in J, \\ \dot{b}_t &= r b_t + y - c_t - \dot{m}_t - \varepsilon_t m_t, & \text{if } t \notin J. \end{aligned} \quad (2.2)$$

Throughout the paper, a dot over a variable represents the derivative of that variable with respect to time. Here b_t denotes the household’s holdings of net foreign bonds that yield a real rate of return of r and y is a constant, exogenous flow of output. The variable m_t represents real money balances, defined as $m_t = M_t/P_t$, where M_t denotes nominal money holdings. The variable ε_t denotes the rate of devaluation, which coincides with the inflation rate, $\varepsilon_t = \dot{P}_t/P_t = \dot{S}_t/S_t$. To eliminate inessential dynamics, we assume that $r = \rho$.

As in Drazen and Helpman (1987), equation (2.2) takes into account the possibility of discrete changes in b_t and M_t at a finite set of points in time, J . Below we see that this set contains $t = 0$ and the time at which the peg is abandoned, T . These jumps are defined as $\Delta b_t \equiv b_t - b_{t-}$, where b_{t-} represents the limit from the left. Since at any point in time after $t = 0$, the total level of real financial assets cannot change discretely, $b_{t-} + m_{t-} = b_t + m_t$.⁷ At time $t = 0^-$, just before

⁷At $t = 0$, the total level of real financial assets may change discretely due to an unanticipated jump in the exchange rate, which changes the value of real money balances from M_{0-}/S to M_{0-}/S_0 .

the household's time zero decisions are made, agents hold an amount b_{0-} in real bonds. Their holdings of nominal money balances are M_{0-} and their real money balances are therefore $m_{0-} = M_{0-}/S$.

Consumption is subject to a cash-in-advance constraint:

$$m_t \geq c_t. \quad (2.3)$$

Since we only consider environments in which the nominal interest rate is positive, equation (2.3) will always hold with equality.

The flow budget constraint, (2.2) and the transversality condition, $\lim_{t \rightarrow \infty} e^{-rt} b_t = 0$, implies the following intertemporal budget constraint:

$$b_{0-} + y/r = \int_0^\infty (c_t + \dot{m}_t + \varepsilon_t m_t) e^{-rt} dt + \sum_{j \in J} e^{-rj} (M_j - M_{j-})/S_j. \quad (2.4)$$

This budget constraint can be further simplified by using the cash-in-advance constraint (2.3) and imposing the condition that $\lim_{t \rightarrow \infty} e^{-rt} m_t = 0$:⁸

$$b_{0-} + \frac{M_{0-}}{S_0} + y/r = \int_0^\infty c_t (1 + r + \varepsilon_t) e^{-rt} dt. \quad (2.5)$$

This expression makes clear that, as is typical of cash-in-advance models, the *effective* price of consumption is given by $1 + r + \varepsilon_t$.

The first-order condition for the household's problem is

$$1/c_t = \lambda (1 + r + \varepsilon_t), \quad (2.6)$$

where λ is the Lagrange multiplier associated with (2.5).

2.2. Government

The government collects seignorage revenues and carries out expenditures, g_t . To simplify, we assume that government spending yields no utility to the representative household. The government's flow budget constraint is given by

$$\begin{aligned} \Delta f_t &= (M_t - M_{t-})/S_t, & \text{if } t \in J, \\ \dot{f}_t &= r f_t - g_t + \dot{m}_t + \varepsilon_t m_t, & \text{if } t \notin J, \end{aligned} \quad (2.7)$$

⁸This condition is always satisfied in equilibrium since (2.3) holds as an equality.

where f_t denotes the government's net foreign assets. This flow budget constraint, together with the condition $\lim_{t \rightarrow \infty} e^{-rt} f_t = 0$, implies the following intertemporal budget constraint for the government:

$$f_{0-} + \int_0^\infty (\dot{m}_t + \varepsilon_t m_t) e^{-rt} dt + \sum_{j \in J} e^{-rj} (M_j - M_{j-}) / S_j = \Gamma_{0-}, \quad (2.8)$$

where, by definition, Γ_{0-} is the present value of government spending:

$$\Gamma_{0-} \equiv \int_0^\infty g_t e^{-rt} dt.$$

If the peg is abandoned at time zero the jump in the money supply ($M_0 - M_{0-}$) is controlled by the central bank through its choice of M_0 . In contrast, if the peg is abandoned at $T > 0$, the jump in the money supply ($M_T - M_{T-}$) is endogenously determined. Under perfect foresight, the path for the exchange rate must be continuous for all $t > 0$ to rule out arbitrage opportunities. This requirement implies that, in equilibrium, the household reduces its money holdings at time T in anticipation of the higher inflation rate for $t \geq T$.

2.3. Equilibrium Consumption

Combining the household's and government's intertemporal constraints (equations (2.4) and (2.8), respectively), we obtain the economy's aggregate resource constraint:

$$b_{0-} + f_{0-} + y/r = \int_0^\infty c_t e^{-rt} dt + \Gamma_{0-}. \quad (2.9)$$

This constraint implies that the present value of output plus the total net foreign assets in the economy must equal the present value of consumption and government expenditures.

2.4. A Sustainable Fixed Exchange Rate Regime

Before time zero, the economy is in a sustainable fixed exchange rate regime, so agents expect ε to be permanently zero. Sustainability of the peg requires that

the government's net foreign assets be sufficient to finance the present value of government expenditures; that is: $f_{0-} = \Gamma_{0-}$. Further, in the fixed exchange rate regime, equations (2.3) and (2.9) imply that consumption and real balances are given by:

$$\begin{aligned} c_{0-} &= y + rb_{0-}, \\ m_{0-} &= c_{0-}. \end{aligned} \tag{2.10}$$

Using the household's intertemporal constraint we can write consumption before time zero as:

$$c_{0-} = \frac{ra_{0-} + y}{1 + r}, \tag{2.11}$$

where $a_{0-} \equiv b_{0-} + M_{0-}/S$.

2.5. Optimal Monetary Policy

Suppose that at time 0 there is an unanticipated increase in the present value of government expenditures from Γ_{0-} to Γ_0 that must be financed with seigniorage. Clearly, the peg has to be abandoned at some point because Γ_0 cannot be intertemporally financed with $\varepsilon = 0$. What is the optimal exit time? Throughout the paper we focus on the perfect commitment solution to this question.

After the fiscal shock takes place, the aggregate constraint for the economy is

$$b_{0-} + y/r = \int_0^\infty c_t e^{-rt} dt + \Delta\Gamma, \tag{2.12}$$

where $\Delta\Gamma = \Gamma_0 - \Gamma_{0-}$ represents the increase in the present value of government expenditures. Suppose that the government could finance this extra expenditure with lump sum taxes. Consumption would be constant over time at a level given by $c_0 = c_{0-} - r\Delta\Gamma$. Since $\Delta\Gamma > 0$, the new level of consumption is lower than before. The economy has the same resources as before the fiscal shock, so the rise in government spending has to be accommodated by a fall in private consumption. Assuming, without loss of generality, that the exchange rate remains fixed at $t = 0$,

the corresponding fall in real money balances occurs through a fall in the nominal money supply at $t = 0$.

It is easy to check (see Rebelo and Végh (2006)) that the government can replicate the lump sum taxes outcome by either expanding the money supply at a constant rate from $t = 0$ on, by printing money at $t = 0$, or by combining these two strategies. So, there are multiple ways for monetary policy to achieve the optimal outcome but all these policies require that the fixed exchange rate be abandoned at time zero.

In contrast, abandoning the peg at time $T > 0$ yields a lower level of welfare than the policies just discussed. To show this result we use the following proposition.⁹

Proposition 2.1. *Once the fixed exchange rate regime is abandoned at time $T > 0$, it is optimal to expand the money supply at a constant rate, ε_T . The optimal path for money growth, conditional on abandonment at time T , is thus:*

$$\begin{aligned} \varepsilon_t &= 0, & \text{for } 0 \leq t < T \\ \varepsilon_t &= \varepsilon_T, & \text{for } t \geq T \end{aligned} \quad (2.13)$$

We now show that any positive ε_T generates an intertemporal distortion on consumption. The value of ε_T has to satisfy the government's intertemporal budget constraint, (2.8), which can be written as:

$$\frac{\varepsilon_T m_T}{r} e^{-rT} = \Delta\Gamma + \frac{M_{0-} - M_0}{S} + \frac{M_0 - M_T}{S} e^{-rT}. \quad (2.14)$$

The term $(M_{0-} - M_0)/S + [(M_0 - M_T)/S]e^{-rT}$ represents the net reserve losses incurred by the government as the household rearranges its money balances while the exchange rate is fixed in response to the changes in the path for inflation.

The first-order condition for the household's problem, (2.6), implies that consumption is constant within the subperiods $0 < t < T$ and $t \geq T$. Let us denote

⁹To prove this proposition solve the planner's problem for an economy with no cash-in-advance constraint. Then show that the cash-in-advance economy with constant ε can replicate the solution to the planner's problem. See Rebelo and Xie (1999) for details of a closed economy version of this result.

by c^1 and c^2 the level of consumption in the periods $0 < t < T$ and $t \geq T$, respectively. Using equations (2.10), (2.12), and the cash-in-advance constraint, (2.3), we can show that, independently of the form of the momentary utility function and the value of T , the net reserve loss incurred by the government is given by:

$$\frac{M_{0-} - M_0}{S} + \frac{M_0 - M_T}{S} e^{-rT} = r\Delta\Gamma. \quad (2.15)$$

Using this result, we can rewrite the government budget constraint (2.14) as:

$$\frac{\varepsilon_T m_T}{r} e^{-rT} = \Delta\Gamma(1 + r). \quad (2.16)$$

This equation implies that $\varepsilon_T > 0$. The first-order condition for the household's problem, (2.6), implies that $c^2 < c^1$. Since the present value of resources that are available for consumption is independent of T , this non-flat path of consumption results in lower welfare compared to the case where the peg is abandoned at time zero.

The net reserve loss described in (2.15) is a cost that the government incurs when the abandonment of the fixed exchange rate regime is either delayed or, in the case of immediate abandonment, if real money balances fall through a reduction in nominal money balances. However, since this cost represents a transfer from the government to households, it is not a cost to the economy as a whole. As a result, this cost does not affect the optimal exit time. The next section considers the case in which there are social costs associated with the abandonment of the peg.

3. Exit Costs

In this section we introduce costs of abandoning the fixed exchange regime into our model. We assume that when the fixed exchange rate is abandoned, the government incurs a fiscal cost of ϕ which also represents a social loss for the economy as a whole. This exit cost can be given several interpretations. First, it can reflect a fall in output and tax revenues following the abandonment of the

peg. Second, since banking crises are typically a by-product of currency crises (Kaminsky and Reinhart (1999)), these costs can stem from bailing out domestic banks (Burnside, Eichenbaum and Rebelo (2004)). Third, these costs can result from bailing out foreign creditors. A devaluation can make it optimal for domestic firms to default on foreign loans that had been guaranteed by the government. In these circumstances, a devaluation creates a fiscal liability for the government.¹⁰

We proceed by setting up the Ramsey problem, starting with the condition that guarantees that the Ramsey solution is implementable as a competitive equilibrium.

3.1. The Implementability Condition

We need to distinguish between two cases: $T = 0$ and $T > 0$. If the fixed exchange rate is abandoned at $T = 0$, the government sets a constant, positive rate of devaluation ε_0 from time zero onwards. Given this policy, first-order condition (2.6) indicates that consumption is constant over time and, from (2.5), this constant level, denoted by \bar{c} , is given by

$$\bar{c} = \frac{ra_0 + y}{1 + r + \varepsilon_0}, \quad (3.1)$$

where $a_0 \equiv b_{0-} + M_{0-}/S_0$. We assume, without loss of generality, that the exchange rate remains constant ($S_0 = S$) when the abandonment occurs at time 0. This assumption implies that $a_0 = a_{0-}$. Solving for ε_0 , we obtain:

$$\varepsilon_0 = \frac{ra_0 + y}{\bar{c}} - (1 + r). \quad (3.2)$$

This equation is the implementability condition when $T = 0$.

The optimal path for ε_t , conditional on the peg being abandoned at $T > 0$, is given by equation (2.13) in Proposition 2.1. The consumer's first-order condition (2.6) implies that the levels of consumption within each subperiod ($0 < t < T$ and $t \geq T$) are constant. As before, denote these constant levels of consumption

¹⁰We develop this interpretation in a previous version of this paper, available upon request.

by c^1 and c^2 , respectively. Using this notation, we can rewrite the household's intertemporal constraint (2.5) as:

$$a_0 + y/r = \frac{c^1(1+r)}{r}(1 - e^{-rT}) + \frac{c^2(1+r+\varepsilon_T)}{r}e^{-rT}. \quad (3.3)$$

Since equation (2.6) implies that $c^1(1+r) = c^2(1+r+\varepsilon_T)$, the values of c^1 and c^2 are given by

$$c^1 = \frac{ra_0 + y}{1+r}, \quad (3.4)$$

$$c^2 = \frac{ra_0 + y}{1+r+\varepsilon_T}. \quad (3.5)$$

Equation (3.4) has two implications. First, c^1 is determined by the household's problem (recall that $a_0 = a_{0-}$) and so it is *not* a choice variable for the Ramsey planner. Second, c^1 is equal to c_{0-} (see (2.11)).

Equation (3.5) is the implementability condition for the case of $T > 0$, which can be re-written as:

$$\varepsilon_T = \frac{ra_0 + y}{c^2} - (1+r). \quad (3.6)$$

3.2. Government's Budget Constraint

We can write the government's budget constraint, (2.8), as:

$$\frac{\varepsilon_0 m_0}{r} = \Delta\Gamma + \phi + \frac{M_{0-} - M_0}{S}, \quad \text{if } T = 0, \quad (3.7)$$

$$\frac{\varepsilon_T m_T}{r} e^{-rT} = \Delta\Gamma + \phi e^{-rT} + \frac{M_{0-} - M_0}{S} + \frac{M_0 - M_T}{S} e^{-rT}, \quad \text{if } T > 0, \quad (3.8)$$

where m_0 and m_T denote the real money balances associated with \bar{c} and c^2 , respectively. The exit cost, ϕ , is included in this constraint since it is a fiscal cost that the government incurs at time T . Notice that, as T tends to zero, constraint (3.8) reduces to (3.7) indicating that the government's budget constraint is (right-hand) continuous at $T = 0$.

Using the cash-in-advance constraint, the implementability conditions (3.2) and (3.6), and taking into account that $c_1 = c_{0-}$, we can rewrite the government's budget constraint as

$$\frac{c_{0-} - \bar{c}}{r} = \Delta\Gamma + \phi, \quad T = 0, \quad (3.9)$$

$$\frac{e^{-rT}}{r}(c_{0-} - c^2) = \Delta\Gamma + \phi e^{-rT}, \quad T > 0. \quad (3.10)$$

Again, since c^2 converges to \bar{c} as T tends to zero, constraint (3.10) tends to (3.9), which enables us to just use constraint (3.10) below for all $T \geq 0$.

3.3. The Ramsey Problem

Taking into account that $c^1 = c_{0-}$, we can rewrite the household's lifetime utility (2.1) as

$$V = \frac{\log(c_{0-})}{r}(1 - e^{-rT}) + \frac{\log(c^2)}{r}e^{-rT}. \quad (3.11)$$

The Ramsey planner then chooses $\{c^2, T\}$ to maximize the household's lifetime utility, (2.1), subject to constraint (3.10) and a non-negativity constraint on T .¹¹ Once the optimal value of c^2 has been determined, we can use (3.6) to determine the value of ε for any $t \geq 0$.

The first-order condition with respect to c^2 can be written as:¹²

$$\frac{1}{c^2} = \lambda. \quad (3.12)$$

The Kuhn-Tucker condition with respect to T is given by:

$$\begin{aligned} \log(c_{0-}) - \log(c^2) + \lambda[r\phi - (c_{0-} - c^2)] &\leq 0, & T > 0, \\ \{\log(c_{0-}) - \log(c^2) + \lambda[r\phi - (c_{0-} - c^2)]\} &= 0, & T = 0. \end{aligned} \quad (3.13)$$

¹¹Note that since the RHS of constraint (3.10) is always non-negative, then $c^2 \leq c_{0-}$. In addition – and to ensure that c^2 is always positive – we restrict parameter values such that the condition $\phi + e^{rT}\Delta\Gamma < c^1/r$ is always satisfied.

¹²To obtain conditions (3.12) and (3.13), we have divided by e^{-rT} . This term is different from zero since T must be finite. Otherwise, given that $\Delta\Gamma > 0$, the government's intertemporal constraint (3.10) would be violated.

The optimal exit time is characterized by the following proposition, which includes the case of $\phi = 0$ discussed in the previous section as a special case.

Proposition 3.1. *The optimal exit time, T^* , is given by:*

<i>Optimal Exit Time</i>	<i>Low $\Delta\Gamma$ $\Delta\Gamma < c_{0-}/er$</i>	<i>High $\Delta\Gamma$ $\Delta\Gamma \geq c_{0-}/er$</i>
<i>Low ϕ ($0 \leq \phi \leq \phi^*$)</i>	$T^* = 0$	$T^* = 0$
<i>Intermediate ϕ ($\phi^* < \phi < \phi^{**}$)</i>	$T^* > 0$	$T^* = 0$
<i>High ϕ ($\phi \geq \phi^{**}$)</i>	$T^* = 0$	$T^* = 0$

Proof. See Appendix 7.2.

According to this proposition, delaying is optimal only when the fiscal shock is low ($\Delta\Gamma < c_{0-}/er$) and ϕ takes on an intermediate value. In all other cases, it is optimal to abandon immediately. To understand the intuition underlying this result, it is useful to rewrite the Kuhn-Tucker condition, (3.13), using (3.12), as:

$$\underbrace{\frac{r\phi}{c^2}}_{\text{benefit of delaying}} \leq \underbrace{\left(\frac{c_{0-}}{c^2} - 1\right) - \log\left(\frac{c_{0-}}{c^2}\right)}_{\text{cost of delaying}}. \quad (3.14)$$

Since $c^2 < c_{0-}$, the term labeled “cost of delaying” is always positive and captures the intertemporal distortion associated with delaying. Of course, even if abandonment were immediate, this term is positive because of the negative wealth effect resulting from higher government spending. But delaying increases this term further because the intertemporal distortion becomes larger as c^2 becomes smaller. The benefit of delaying is the flow saving, $r\phi$, relative to post-crisis consumption, c^2 . This benefit results from reducing the present discounted value of the cost of abandonment. If the cost of delaying is larger than the benefit of delaying, then

immediate abandonment is optimal.¹³

When $\Delta\Gamma \geq c_{0-}/er$, the intertemporal distortion introduced by delaying is so large that it dominates the benefit of delaying for any admissible ϕ . To see this, notice that as $\Delta\Gamma$ increases, c^2 converges to zero. As a result, both the benefit of delaying and the cost of delaying become arbitrary large. However, the cost of delaying prevails because $r\phi < c_{0-}$ and hence the *net* benefit of delaying tends to $-\infty$. In other words, the fact that the benefit of delaying is bounded relative to c_1 explains why the cost of delaying prevails.

When $\Delta\Gamma < c_{0-}/er$, the intertemporal distortion imposed by abandoning the peg for some $T > 0$ is smaller and therefore the decision comes down to a trade-off between the costs and benefits of delaying. Clearly, if $\phi = 0$, there are no benefits from delaying and immediate abandonment is optimal. For small values of ϕ , the benefits are still small relative to the intertemporal distortion that needs to be imposed and immediate exit is still optimal. There is some threshold level of ϕ , ϕ^* , beyond which the benefit of delaying becomes large enough to warrant a delayed exit. For values of ϕ larger than ϕ^{**} , that is values of ϕ close to the maximum admissible value, once again both the cost of delaying and the benefit of delaying become arbitrarily large but the cost of delaying dominates. The intuition is analogous to the one just discussed.

3.3.1. Some illustrative calculations

The table in proposition 3.1 shows that delaying the abandonment and incurring some reserve losses is optimal in only one out of six possible cases. However, the proposition says nothing about the empirical relevance of each of the six cases. We now provide some back-of-the-envelope calculations to illustrate the predictions of our model for T^* using empirically-plausible values of the cost of abandoning (ϕ) and the fiscal shock ($\Delta\Gamma$). While admittedly crude, these calculations shed light on how often it is optimal to abandon immediately. The choice of values

¹³It is important to keep in mind that admissible values of ϕ are bounded from above since c^2 must be positive (see Appendix 7.2 for details).

for ϕ and $\Delta\Gamma$ is far from trivial and forces us to make some stark connections between the model and reality. For the fiscal shock we focus our attention on the 37 episodes underlying Table 1 for which there was a positive increase in government spending during the three years before the crisis. We compute $\Delta\Gamma$ by assuming that there is a once-and-for-all increase in (annual) government spending equivalent to the (geometric) average of the increase in the three-year period before the crisis. For example, for the Argentinean crisis of June 1970, the increase in real government spending during the three years prior to the crisis was 15.9 percent. The corresponding geometric average is 5.0 percent per year. Assuming that the annual real interest rate is four percent, a once-and-for-all increase of 5.0 percent in government spending implies a present discounted value of 131.1 percent. Hence $\Delta\Gamma$ takes the value 1.311. We follow the same procedure for each of the other 36 episodes.

We choose values of ϕ based on the existing literature. Using a sample of 195 crises in 91 countries, Gupta, Mishra, and Sahay (2007) compute empirical estimates of the output costs entailed by currency crises. They report that the average output fall that can be attributed to crisis episodes in the 1970s, 1980s, and 1990s is, respectively, 3.0, 1.1, and 0.8 percent. Hutchinson and Neuberger (2001) focus exclusively on emerging markets and examine 51 crises in 24 countries over the period 1975-1997. They conclude that, controlling for other factors, a crisis leads to output falls of between five and eight percent. Based on these studies, we consider values of ϕ ranging from one to eight percent. Table 2 reports the percentage of cases (among the 37 episodes of Table 1) for which $T^* = 0$. For example, for $\phi = 0.01$, $T^* = 0$ for 59 percent of the cases and $T^* > 0$ for the remaining 41 percent. For $\phi = 0.08$ immediate abandonment is optimal in eight

percent of the cases.¹⁴

Table 2. T^* for various values of ϕ

	ϕ			
	0.01	0.03	0.05	0.08
$T^* = 0$	59	27	14	8
$T^* > 0$	41	73	86	92

We thus conclude that the model predicts immediate abandonment for a broad range of values of ϕ , which is consistent with the evidence shown above indicating that many countries have abandoned exchange rate pegs with still plenty of international reserves in their coffers.¹⁵

3.4. Properties of the Optimal Policy

We can now analyze how the values of T^* , post-abandonment inflation, and reserve losses depend on ϕ and $\Delta\Gamma$ for the admissible range of parameter values. Formal proofs are relegated to Appendices 7.3 and 7.4.

Figure 2 shows the behavior of the optimal values of T , ε , and the reserve loss as a function of ϕ for a *small* fiscal shock ($\Delta\Gamma < c_{0-}/er$). Panel A shows the behavior of the optimal exit time. Up to $\phi = \phi^*$, it is optimal to abandon immediately. In the region in which $T^* > 0$, the value of T^* is a non-monotonic function of ϕ . For values of ϕ larger than ϕ^{**} , it again becomes optimal to abandon immediately.

Panel B of Figure 2 shows that the optimal inflation rate (ε) is always an increasing function of ϕ (i.e., for $T^* = 0$ and $T^* > 0$).

Finally, Panel C in Figure 2 illustrates the behavior of the loss of reserves, which equals $c_{0-} - c^2$, at the time of abandonment. Since c_{0-} is independent of T and ϕ , the reserve loss when $T^* > 0$ depends only on the behavior of c^2 . The

¹⁴These calculations assume that the elasticity of intertemporal substitution is 0.30, which is consistent with the estimated reported in Reinhart and Végh (1995).

¹⁵Of course, even when $T^* > 0$ there are many cases in which the reserve losses are small. Hence, the cases of immediate abandonment constitute a lower bound for instances of abandonment with small or no reserve losses.

reserve loss is an increasing function of ϕ . When $T^* = 0$ there are of course no reserve losses.

Figure 3 illustrates the behavior of T , ε , and the loss of reserves as a function of the fiscal shock for a given value of ϕ .¹⁶ Panel A shows that, when $T^* > 0$, the optimal exit time is a decreasing function of the fiscal shock. In other words, the larger the fiscal shock the sooner it is optimal to abandon the peg. Intuitively, a larger fiscal shock requires a higher inflation rate once the peg is abandoned, which imposes a larger intertemporal distortion. As a result, it is optimal to abandon earlier to reduce the intertemporal distortion. When the value of the fiscal shock reaches $\Delta\Gamma^*(\equiv c_{0-}/er)$, it becomes optimal to abandon immediately.

The rate of inflation after the regime is abandoned does not depend on $\Delta\Gamma$ whenever $T^* > 0$. This property reflects two opposing forces that cancel each other out. First, for a given T , a larger fiscal shock tends to increase the inflation rate. Second, since T^* falls as the fiscal shock increases, the inflation rate falls. In this case of logarithmic preferences, these two effects exactly cancel each other out. When it is optimal to abandon immediately (i.e., for $\Delta\Gamma \geq \Delta\Gamma^*$), the inflation rate is an increasing function of the fiscal shock. When $\Delta\Gamma = 0$, it is not optimal to abandon the peg and hence the optimal inflation rate is zero.

We conclude by discussing the effects of introducing a borrowing constraint on the government. To simplify we consider the case in which government expenditure is constant at a level g_{0-} before the fiscal shock and at a level $g_0 > g_{0-}$ after the fiscal shock. Suppose that there is a binding borrowing constraint that dictates that $f_t \geq \bar{f}$. It can be shown that lifetime utility, V , is an increasing function of T for values of T below the optimal. Once the regime is abandoned, f_t becomes constant, $f_t = f_T$ for $t \geq T$. The value of f_T is a decreasing function of T . Thus, whenever $T^* > 0$, a borrowing constraint forces the economy to abandon the fixed exchange rate regime before T^* . In this situation we can think of central bankers as following the KFG abandonment rule, since they maintain the regime

¹⁶The given value of ϕ is $(c_{0-}/r)(1 - 2/e)$. As shown in Appendix 7.4, the Kuhn-Tucker condition is exactly equal to zero for this value of ϕ .

for as long as possible and, at the time of abandonment, exhaust their ability to borrow. In general, however, appealing to the presence of a borrowing constraint does not justify the KFG exit rule since, when $T^* = 0$, borrowing constraints have no impact on the decision to exit the fixed exchange rate.

4. Model Extensions

In order to assess the theoretical robustness of our key results, we explore in this section several extensions of the basic model analyzed in Section 3.

4.1. Time-Varying Exit Costs

Consider the case in which the exit cost, ϕ , varies over time. On the one hand, the exit cost can decline over time if postponing the abandonment of the peg gives firms time to prepare for the change in regime by changing prices or hedging exchange rate risk. On the other hand, the costs associated with a currency crisis can increase with the post-crisis rate of inflation. To simplify we assume that ϕ_t grows at a constant rate δ that can be positive or negative:

$$\phi_t = \phi e^{\delta t}. \quad (4.1)$$

Here ϕ_t is the cost of abandoning the peg at time t , ϕ is a positive constant, and δ is the rate at which the cost changes over time.

The consumer's problem remains the same as in Section 3. The government's budget constraint now reads as:

$$\frac{e^{-rT}}{r}(c_{0-} - c^2) = \Delta\Gamma + \phi e^{-(r-\delta)T}, \quad T \geq 0. \quad (4.2)$$

The first-order condition for the Ramsey problem, (3.12), remains valid and the Kuhn-Tucker condition is given by:

$$\log\left(\frac{c_{0-}}{c^2}\right) - \left[\frac{c_{0-}}{c^2} - 1 - \frac{(r-\delta)\phi e^{\delta T}}{c^2}\right] \leq 0. \quad (4.3)$$

The following proposition generalizes the results in Proposition 3.1.

Proposition 4.1. *If $\delta \geq r$, it is optimal to abandon at $T = 0$ for any value of $\Delta\Gamma > 0$. If $\delta < r$ the optimal exit time, T^* , is given by:*

Optimal Exit Time	Low $\Delta\Gamma$	High $\Delta\Gamma$
	$\Delta\Gamma < \frac{c_{0-}}{r} \left(e^{\frac{\delta-r}{r}} - \frac{\delta}{r} \right) - \delta$	$\Delta\Gamma \geq \frac{c_{0-}}{r} \left(e^{\frac{\delta-r}{r}} - \frac{\delta}{r} \right) - \delta$
Low ϕ ($0 \leq \phi \leq \phi^*$)	$T^* = 0$	$T^* = 0$
Intermediate ϕ ($\phi^* < \phi < \phi^{**}$)	$T^* > 0$	$T^* = 0$
High ϕ ($\phi \geq \phi^{**}$)	$T^* = 0$	$T^* = 0$

Proof. Start with expression (4.3) and proceed in exactly the same way as in Proposition 3.1 (see Appendix 7.2).

When $\delta = r$, the present discounted value of the exit cost is independent of T , so there is no benefit from delaying. If $\delta > r$, delaying increases the present discounted value of the exit cost. In both of these cases, it is optimal to abandon right away. When $\delta < r$, delaying reduces the present discounted value of the exit costs, so delaying can be optimal.

To illustrate the effect of different values of δ , Figure 4 plots T^* as a function of the fiscal shock ($\Delta\Gamma$) for three values of δ ($\delta = 0$, $\delta = 0.03$, and $\delta = -0.03$).¹⁷ The $\delta = 0$ case is the case studied in Section 3. When δ is negative ($\delta = -0.03$), the threshold value of $\Delta\Gamma$ beyond which it is optimal to abandon right away is larger than that for the $\delta = 0$ case. The opposite is true when δ is positive ($\delta = 0.03$).

The intuition for these results can be explained using equation (4.3), which can be rewritten as:

$$\underbrace{\frac{(r - \delta)\phi e^{\delta T}}{c^2}}_{\text{benefit of delaying}} \leq \underbrace{\left(\frac{c_{0-}}{c^2} - 1 \right) - \log \left(\frac{c_{0-}}{c^2} \right)}_{\text{cost of delaying}}. \quad (4.4)$$

For $\delta = 0$, this condition reduces to (3.14). The cost of delaying is the same as before. The benefit of delaying captures the flow saving, now given by $(r - \delta)\phi e^{\delta T}$

¹⁷Parameter values for Figure 4 are $r = 0.037$, $a_0 = -0.35$, $y = 1$, and $\phi = 0.002$.

which, in light of (4.1), can also be written as $(r - \delta)\phi_t$. Compare the $\delta = 0$ case with the $\delta < 0$ case. When $\delta < 0$ the flow saving from delaying for an additional moment for a *given* ϕ_t is higher for the $\delta = 0$ case. This effect calls for an additional delay. However, a negative δ implies that, all else equal, the *current* cost of devaluing, $\phi e^{\delta T}$, is smaller than it would be in the $\delta = 0$ case. By making the flow saving smaller, this effect calls for a smaller delay. For small values of T (and in particular around $T = 0$), the first effect dominates, which implies that the threshold value beyond which it is optimal to abandon immediately is a decreasing function of δ , as illustrated in Figure 4 (notice that the threshold is the largest for $\delta = -0.03$ and the smallest for $\delta = 0.03$). When comparing $\delta = -0.03$ and $\delta = 0$, this first effect continues to dominate up to the value of $\Delta\Gamma$ corresponding to point A in Figure 4. Below this point the second effect dominates and, for a given fiscal shock, T is smaller for $\delta = -0.03$ than for $\delta = 0$.¹⁸

4.2. The Exit Cost is Not a Fiscal Cost

So far we have assumed that the exit cost ϕ is both a fiscal cost and a social cost. One could think that the fiscal nature of the exit cost drives our main results since delaying the abandonment reduces the exit cost that has to be financed by the fiscal authority. To show that our results do not depend on the exit cost being a fiscal cost, we briefly discuss a version of the model presented in Section 3 in which the cost of abandonment, θ , is a reduction in the economy's endowment and does not enter the government's budget constraint. This cost can be interpreted as a loss in output that occurs when the peg is abandoned.

Formally, the only modification to the model of Section 3 is in the household's intertemporal constraint which is now given by

$$b_{0-} + \frac{M_{0-}}{S_0} + \frac{y}{r} - \theta e^{-rT} = \int_0^\infty c_t(1 + r + \varepsilon_t)e^{-rt}dt. \quad (4.5)$$

Here $y/r - \theta e^{-rT}$ is the present discounted value of the endowment *net* of the

¹⁸See Rebelo and Vegh (2006) for a discussion of the behavior of T^* as a function of the cost of abandonment, ϕ .

cost of abandoning the peg. Households take T as given, so they view θe^{-rT} as exogenous to their decisions. However, the Ramsey planner takes the exit cost into account.

The main complication introduced by this formulation is that the Ramsey planner's problem is not continuous in T at time zero. The reason is that c^1 depends on T since the term θe^{-rT} affects the household's budget constraint. Therefore, c^1 is a choice variable for the Ramsey planner when $T > 0$ but not when $T = 0$. We thus opted to solve the model numerically by first computing T^* analytically assuming that the solution is interior and then comparing the value of V associated with this solution with the value of V for $T^* = 0$.

We verified that our main results hold for a wide range of parameters. Figure 5 shows that T^* falls with the fiscal shock until a certain threshold, beyond which it is optimal to abandon immediately. In Rebelo and Végh (2006), we also illustrate T^* as a function of the cost of abandonment, θ , and show how, as in the model of Section 3, it is optimal to abandon immediately for small values of θ . Beyond a certain threshold of θ , the optimal time of abandonment is an increasing function of θ .

Intuitively, even though θ is not a fiscal cost, it still has fiscal repercussions. An increase in θ reduces c^2 , which is the tax base for the post-crisis inflation tax. Increasing T raises households' wealth, and hence c^2 , which increases tax revenues for a given post-crisis inflation rate. This effect needs to be traded-off against the fact that delaying implies a higher post-crisis devaluation rate and hence a larger intertemporal distortion.

4.3. Non-Unitary Elasticity of Intertemporal Substitution

Up to this point, we have assumed that momentary utility is logarithmic. Consider the more general case in which utility is given by:

$$V \equiv \int_0^\infty \frac{c_t^{1-1/\sigma} - 1}{1 - 1/\sigma} e^{-\rho t} dt, \quad (4.6)$$

where $\sigma > 0$ denotes the intertemporal elasticity of substitution. When σ is different from one, the Ramsey planner's problem is discontinuous at $T = 0$ because the level of consumption before abandonment (c^1) differs from the initial level of consumption (c_0). We therefore solved the model numerically.

The results that we obtained for a very wide range of parameters are qualitatively the same as those discussed in Section 3 for the logarithmic case.¹⁹ In particular, it is still the case that T^* is a decreasing function of the fiscal shock until certain threshold value beyond which $T^* = 0$. For interior solutions, a lower (higher) elasticity of substitution increases (decreases) $T^* > 0$ because it implies a smaller (larger) intertemporal distortion for any given inflation rate. Similarly, there is a certain threshold value of ϕ below which $T^* = 0$. Above this threshold, T^* is an increasing function of ϕ . Further, for a given value of ϕ , the smaller (larger) is the intertemporal elasticity of substitution, the higher (lower) is T^* because the lower (larger) is the impact on utility of a given rate of post-crisis inflation. Hence, it is optimal to delay more.

4.4. The Exit Cost Increases with the Fiscal Shock

So far we have assumed that the exit cost is independent of the fiscal shock. However, one can imagine scenarios in which the exit cost depends positively on the fiscal shock. We now analyze this case and show that our main results continue to hold.

Suppose that the cost of abandoning the peg is given by:

$$\phi_t = \phi_0 + \alpha \Delta \Gamma,$$

for some $\alpha > 0$. For simplicity, we analyze the case in which $\phi_0 = 0$. (When $\phi_0 > 0$, the same results go through since the presence of a positive cost of exiting when $\Delta \Gamma = 0$ reinforces the results described below.)

The consumer's problem remains the same as in Section 3. The Kuhn-Tucker

¹⁹See Rebelo and Vegh (2006) for a more detailed discussion.

condition for the Ramsey planner becomes:

$$\underbrace{\frac{r\alpha\Delta\Gamma}{c^2}}_{\text{benefit of delaying}} \leq \underbrace{\left(\frac{c_0^-}{c_2} - 1\right) - \log\left(\frac{c_0^-}{c_2}\right)}_{\text{cost of delaying}}. \quad (4.7)$$

This equation is analogous to equation (3.14). We now show that, as in the case discussed in Section 3, there is a threshold value of the fiscal shock beyond which it is optimal to abandon immediately.

Proposition 4.2. *For any given $\alpha > 0$, there is a threshold value of $\Delta\Gamma$, $\Delta\Gamma^*$, such that for any $\Delta\Gamma \geq \Delta\Gamma^*$, it is optimal to abandon immediately.*

Proof. See Appendix 7.6 in Rebelo and Végh (2006).

For a sufficiently large fiscal shock, both the cost and benefit of delaying become arbitrary large, but the former dominates and hence it is optimal to abandon right away. The intuition parallels the discussion following equation (3.14) in Section 3. In other words, the key is that the flow saving is bounded relative to c^1 and, hence, for large fiscal shocks, the cost of delaying dominates and immediate abandonment is optimal.

Finally, we also show (see Appendix 7.7 of Rebelo and Végh (2006)) that when the solution is interior the optimal T is a decreasing function of the fiscal shock.

5. Stochastic Fiscal Reform

In sections 3 and 4 we study the optimal monetary policy in models where there are both fiscal and social costs of abandoning the fixed exchange rate regime. We now consider an economy where these costs are absent but where government spending is stochastic. As in the previous sections, we assume that before time zero the fixed exchange rate regime was sustainable, so the government's net foreign assets were sufficient to finance the present value of government spending. At time zero the economy learns that the present value of government spending has increased by $\Delta\Gamma$. The new element introduced in this section is that while the exchange

rate is fixed (after time zero but before the peg is abandoned) there can be a reduction in government spending that makes the peg, once again, sustainable. This expenditure reduction occurs according to a Poisson process with arrival rate λ . If the peg is abandoned, the increase in government spending becomes permanent and has to be financed with seignorage revenues. There is thus an option value of holding on to the peg. This formulation captures in a simple way the idea that a fixed exchange rate regime exerts pressure on the fiscal authorities to enact reforms to make the peg sustainable. This pressure disappears once the exchange rate floats. An alternative interpretation is that the country can receive a bailout transfer from abroad that pays for the increase in government spending and renders the peg sustainable. This external bailout arrives according to a Poisson process.

The size of the fiscal reform or of the external bailout that has to occur to make the fixed exchange rate regime sustainable depends, naturally, on the path of government spending. If the reform occurs at time t , the present value of government spending from time t on has to be reduced to a value Γ_t given by:

$$\Gamma_t = f_0 e^{rt} - e^{rt} \int_0^t g_s e^{-rs} ds. \quad (5.1)$$

Expression (5.1) implies that if there has been no new spending between time zero and time t , all that is necessary to make the peg sustainable is to cancel the plans for new government spending in the future. However, if new spending has already taken place in the time interval up to time t the government needs to reduce the present value of government spending below its level before the fiscal shock.

The optimal policy consists in choosing the time T at which the fixed exchange rate regime is abandoned, if a fiscal reform has not materialized in the meantime. A higher value of T makes a fiscal reform more likely. However, the longer the horizon T , the larger the intertemporal consumption distortion that the government has to introduce if the reform does not occur.

The Time When Reform Occurs We start by characterizing the case in which a fiscal reform has just occurred making the fixed exchange rate sustainable. Consumption is constant and its level, which we denote by c^* , can be computed using the household's budget constraint:

$$b + y/r = c^*/r + (c^* - m).$$

Here b and m denote the levels of net foreign assets and real balances that households had in the period where the reform took place. The term $(c^* - m)$ represents the jump in real balances that occurs when agents learn that the fixed exchange rate regime has become sustainable. Lifetime utility is given by:

$$V^*(b + m) = \frac{\log [(rb + rm + y)/(1 + r)]}{r}.$$

The $t \geq T$ Regime Suppose that we have reached time T and a reform has not occurred. The fixed exchange rate regime is abandoned and the growth rate of money rises to a level ε such that the government's intertemporal budget constraint is satisfied. Consumption is constant at a level which we denote by c^2 . This level can be computed using the household's budget constraint:

$$b + y/r = c^2(1 + \varepsilon)/r + (c^2 - m), \tag{5.2}$$

where $(c^2 - m)$ represents the jump in real balances that takes place at time T in response to a permanent increase in inflation from zero to ε . Using (5.2) to solve for c^2 , we can compute lifetime utility at time T :

$$V(b + m, T) = \frac{\log [(rb + rm + y)/(1 + r + \varepsilon)]}{r}. \tag{5.3}$$

The value function (5.3) bears a simple relation with the value function associated with the reform regime:

$$V(b + m, T) = V^*(b + m) - \frac{\log(p)}{r},$$

where p is given by

$$p \equiv \frac{1 + r + \varepsilon}{1 + r}. \quad (5.4)$$

The fact that $r = \rho$ and that inflation is constant means that for any time period $t \geq T$ the value function coincides with $V(b + m, T)$:

$$V(b + m, t) = V(b + m, T) \text{ for } t \geq T.$$

The Regime for $t \leq T$ and No Reform The optimality equation for the household's problem during this period is:

$$\begin{aligned} rV(b + m, t) = & \max_{c^1} \{ \log(c^1) + V_2(b + m, t) + \\ & [r(b + m) + y - c^1(1 + r)]V_1(b + m, t) + \\ & \lambda[V^*(b + m) - V(b + m, t)] \}. \end{aligned}$$

The first order condition with respect to consumption (c^1) is:

$$1/c^1 = V_1(b + m, t)(1 + r).$$

It is easy to verify that the value function has the form:

$$V(b + m, t) = \frac{\log[(rb + rm + y)/(1 + r)]}{r} - \frac{e^{-(\lambda+r)(T-t)} \log(p)}{r}. \quad (5.5)$$

This equation has a simple interpretation. Consider first an economy in which a fiscal reform has no chance of occurring ($\lambda = 0$) and which will switch to the floating regime with certainty at time T . Since utility declines by $\log(p)/r$ at time T , lifetime utility at time t would be:

$$\frac{\log[(rb + rm + y)/(1 + r)]}{r} - \frac{e^{-r(T-t)} \log(p)}{r}. \quad (5.6)$$

Our value function is similar to (5.6) but the discount factor applied to $\log(p)/r$ incorporates λ to reflect the fact that there is an ongoing probability of a fiscal reform until time T .

5.1. Optimal Monetary Policy

At time zero, when the economy learns that there has been an increase in the present value of government spending, the lifetime utility of the household declines from $V^*(b + m)$ to $V(b + m, 0)$ (given by equation (5.5)).

The central bank chooses T , the maximum length of time that it is optimal to wait for a fiscal reform to occur. If the economy reaches time $T > 0$ without a fiscal reform, the central bank has to print money to satisfy the government's intertemporal budget constraint. Since it is optimal to choose a constant growth rate of money, the government's present value resource constraint is:

$$\frac{\varepsilon c^2}{r} e^{-rT} + (c^1 - m_{0-}) + (c^2 - c^1) e^{-rT} = \Delta\Gamma. \quad (5.7)$$

There are no stochastic elements in this equation. This constraint is only relevant when the economy reaches time T without a fiscal reform, in which case all uncertainty has been resolved. Since the economy is in a sustainable fixed exchange rate regime at $t = 0^-$, $m_{0-} = c^1$. Hence, $c^1 = c_{0-}$. Using this fact, and the equation $c^2 = c^1/p$ together with (5.4) we can rewrite (5.7) as:

$$p = \frac{c_{0-}/r}{c_{0-}/r - \Delta\Gamma e^{rT}}. \quad (5.8)$$

This equation defines p as a function of T .

The optimal policy can be characterized by maximizing $V(b + m, 0)$, given by (5.5), with respect to T , subject to (5.8). The optimal value of T is given by:

$$\log\left(\frac{c_{0-}}{c^2}\right) - \left(\frac{c_{0-}}{c^2} - 1\right) + \frac{\lambda}{r + \lambda} \frac{r \Delta\Gamma e^{rT}}{c^2} \leq 0. \quad (5.9)$$

This equation holds with equality whenever $T^* > 0$. Equation (5.9) is similar to the one that characterizes the case in which the exit cost is increasing with the fiscal shock (see equation (4.7)). The term e^{rT} reflects the fact that, as time passes, the size of the fiscal reform has to increase in order to restore the sustainability of the fixed exchange rate.

The optimal abandonment time is characterized by the following proposition.

Proposition 5.1. *For every finite positive value of λ , there is a threshold value for the present value of government spending, Γ^* , such that for $\Gamma_0 > \Gamma^*$ it is optimal to abandon the peg at time zero ($T = 0$), while for $\Gamma_0 \leq \Gamma^*$ it is optimal to delay abandoning the peg ($T \geq 0$). The value of Γ^* is increasing in λ .*

Proof: See Appendix 7.5.

The intuition for this proposition is similar to that of the case in which the exit cost is increasing with the fiscal shock. Take ϕ as given and evaluate (5.9) for $T = 0$:

$$\log\left(\frac{c_{0-}}{c^2}\right) + 1 + \frac{c_{0-}}{c^2} \left(\frac{\lambda}{r + \lambda} \frac{r\Delta\Gamma}{c_{0-}} - 1 \right) \leq 0, \quad (5.10)$$

If (5.10) takes on a negative value it is optimal to choose $T = 0$. Since the fiscal cost cannot exceed the wealth of the economy, $r\Delta\Gamma < c_{0-}$, and the coefficient on c_{0-}/c^2 is negative. For a given ϕ , as $\Delta\Gamma$ increases c^2 converges to zero, while c_{0-} remains constant. As a result, c_{0-}/c^2 becomes arbitrarily large and the left-hand side of (5.10) converges to $-\infty$.²⁰ Since the flow saving of delaying is bounded relative to c_{0-} , the cost of delaying dominates and immediate abandonment is optimal for large values of $\Delta\Gamma$. The fact that Γ^* is increasing in λ is also intuitive: it means that when the reform arrival rate is higher, the range of fiscal shocks for which it is optimal to delay abandoning the peg is larger.

6. Conclusion

Versions of the Krugman-Flood-Garber currency crisis model are widely used to study the abandonment of fixed exchange rate regimes. This class of models assumes that the central bank follows a mechanical exit rule: a peg is abandoned if and only if international reserves reach a critical lower bound. From a positive standpoint the KFG rule is at odds with many episodes in which the central bank

²⁰It should be clear that in this case $T = 0$ is the global optimum. In order for c^2 to be positive, it must be the case that $\Delta\Gamma e^{rT} < c_{0-}/r$, so for any $T > 0$ the left-hand side of (5.9) converges to $-\infty$.

has plenty of international reserves at the time of abandonment. From a normative standpoint, our analysis suggests that the KFG rule is suboptimal.

We characterize the optimal exit strategy in a model in which the fixed exchange rate regime has become unsustainable due to an unexpected increase in the present value of government spending. We show that when there are no exit costs, it is optimal to abandon immediately. When there are exit costs, the optimal abandonment date is a decreasing function of the size of the fiscal shock. In particular, immediate abandonment is optimal for large fiscal shocks.

In this paper, we have studied a basic monetary model where the only impact of inflation is to distort intertemporal consumption allocations. This analysis provides us with a point of departure to study richer environments in which tax revenue and the cost of financing public debt are endogenous and where monetary policy may affect the level of economic activity.

References

- [1] Burnside, C., Eichenbaum, M., and Rebelo, S. (2004), “Government Guarantees and Self-Fulfilling Speculative Attacks”, *Journal of Economic Theory*, 119: 31-63.
- [2] Drazen, A. and Helpman, E. (1987), “Stabilization with Exchange Rate Management”, *The Quarterly Journal of Economics*, 102, 835-855.
- [3] Flood, R. and Garber, P. (1984), “Collapsing Exchange Rate Regimes: Some Linear Examples”, *Journal of International Economics*, 17: 1–13.
- [4] Flood, R. and O. Jeanne (2005), “An Interest Rate Defense of a Fixed Exchange Rate?”, *Journal of International Economics*, 66: 471-484.
- [5] Flood, R., Bhandari, J.S., and Horne, J. (1989), “Evolution of Exchange Rate Regimes”, *IMF Staff Papers*, 36: 810-835.
- [6] Gupta, P., Mishra, D., and Sahay, R. (2007), “Behavior of Output during Currency Crises”, *Journal of International Economics*, 72: 428-450.
- [7] Hutchison, M. and Neuberger, I. (2001), “Output Costs of Currency and Balance of Payments Crises in Emerging Markets,” mimeo (UCSC).
- [8] Kaminsky, G. and Reinhart, C. (1999), “The Twin Crises: The Causes of Banking and Balance-of-Payments Problems”, *American Economic Review*, 89: 473-500.
- [9] Krugman, P. (1979), “A Model of Balance of Payments Crises”, *Journal of Money, Credit and Banking*, 11: 311–25.
- [10] Lahiri, A., and Végh, C.A. (2003), “Delaying the Inevitable: Interest Rate Defense and BOP Crises”, *Journal of Political Economy* 111: 404-424.

- [11] Lucas, R. and Stokey, N. (1983), “Optimal Fiscal and Monetary Policy in an Economy without Capital”, *Journal of Monetary Economics*, 12: 55-93.
- [12] Mussa, M. (2002), *Argentina and the Fund: From Triumph to Tragedy* (Washington, DC: Institute for International Economics).
- [13] Obstfeld, M. (1986), “Rational and Self-Fulfilling Balance-of-Payments Crises”, *American Economic Review*, 76: 72–81.
- [14] Pastine, I. (2002), “Speculation and the Decision to Abandon a Fixed Exchange Rate Regime”, *Journal of International Economics*, 57: 197-229.
- [15] Rebelo, S., and Végh, C.A. (2006), “When Is It Optimal to Abandon a Fixed Exchange Rate?”, mimeo, University of Maryland.
- [16] Rebelo, S. and Xie, D. (1999), “On the Optimality of Interest Rate Smoothing”, *Journal of Monetary Economics*, 43: 263-282.
- [17] Reinhart, C., and Végh, C.A. (1995), “Nominal Interest Rates, Consumption Booms, and Lack of Credibility: A Quantitative Examination”, *Journal of Development Economics*, 46: 357-378.
- [18] Rigobon, R. (2002), “Disinflation and Fiscal Reform: A Neoclassical Perspective”, *Journal of International Economics* 58: 265-297.
- [19] Salant, S. and D. Henderson (1978), “Market Anticipation of Government Policy and the Price of Gold,” *Journal of Political Economy* 86: 627-48.

7. Appendices

7.1. Episode selection

Our original sample consists of the 96 currency crisis episodes identified in Kaminsky and Reinhart (1999) and updates. Since the selection criteria used by Kaminsky and Reinhart is based on a weighted average of reserve losses and changes in the exchange rate, we chose a sub-sample based exclusively on changes in the exchange rate. Specifically, we chose those episodes in which the devaluation in the month of abandonment is at least 10 percent and that meet one of the following criteria: (a) there was a fixed exchange rate (or a negative rate of change in the exchange rate) for at least 12 months before the devaluation; and (b) devaluation in the 12 months following and including the month of abandonment is at least twice as large as the devaluation in the previous 12 months.

7.2. Proof of Proposition 3.1

We first outline some preliminary steps that consist in expressing the Kuhn-Tucker condition solely as a function of the parameters. We then let $\Delta\Gamma > 0$ and $T = 0$ and show the following: 1) If $\phi = 0$, it is optimal to abandon right away; 2) if $\Delta\Gamma \geq c_{0-}/er$, it is optimal to abandon right away regardless of the value of ϕ ; and 3) if $\Delta\Gamma < c_{0-}/er$, whether the solution is interior or not depends on the value of ϕ .

7.2.1. Preliminaries

Our starting point is the Kuhn-Tucker condition (3.14) which, using the government budget constraint, (3.10), can be expressed as:

$$\log\left(\frac{c_{0-}}{c_{0-} - r(e^{rT}\Delta\Gamma + \phi)}\right) - \left[\left(\frac{c_{0-}}{c_{0-} - r(e^{rT}\Delta\Gamma + \phi)} - 1\right) - \frac{r\phi}{c_{0-} - r(e^{rT}\Delta\Gamma + \phi)}\right] \leq 0.$$

To simplify notation, let:

$$p(T, \phi, \Delta\Gamma) \equiv \frac{c_{0-}}{c_{0-} - r(e^{rT}\Delta\Gamma + \phi)}, \quad p_\phi = \frac{rp^2}{c_{0-}}.$$

Then define:

$$\Psi(T, \phi, \Delta\Gamma) \equiv \log(p) - (p - 1) + \frac{r\phi p}{c_{0-}}. \quad (7.1)$$

This expression implies:

$$\Psi_\phi(T, \phi, \Delta\Gamma) = \frac{p_\phi}{c_{0-}}(c_{0-} - \phi r - 2re^{rT}\Delta\Gamma). \quad (7.2)$$

We need to impose bounds on ϕ and $\Delta\Gamma$ to ensure that c^2 is positive. Equation (3.10) implies:

$$c^2 = c_{0-} - r(e^{rT}\Delta\Gamma + \phi) > 0. \quad (7.3)$$

For a given $\Delta\Gamma$, ϕ is bounded by:

$$\phi < \frac{c_{0-}}{r} - e^{rT}\Delta\Gamma. \quad (7.4)$$

For a given ϕ , $\Delta\Gamma$ is bounded by: $\Delta\Gamma < e^{-rT}(c_{0-}/r - \phi)$.

7.2.2. $\phi = 0$ case

We now show that if $\phi = 0$, it is always optimal to abandon at time 0 for any strictly positive fiscal shock. Evaluate (7.1) at $\phi = T = 0$ to obtain $\Psi(0, 0, \Delta\Gamma > 0) = \log(p) - (p - 1) < 0$.

7.2.3. Case $\Delta\Gamma \geq c_{0-}/er$

We now show that if $\Delta\Gamma \geq c_{0-}/er$, then it is optimal to abandon at time 0 regardless of the value of ϕ . To this end, we need to consider two sub-cases.

Case a: $\Delta\Gamma > c_{0-}/2r$. Evaluate expression (7.2) at $T = 0$ to obtain $\Psi_\phi(0, \phi, \Delta\Gamma) = (p_\phi/c_{0-})(c_{0-} - \phi r - 2r\Delta\Gamma) < 0$ since $\Delta\Gamma > c_{0-}/2r$. Hence, $\Delta\Gamma > c_{0-}/2r$ is a sufficient condition for $\Psi_\phi < 0$. Recall that $\Psi(0, 0, \Delta\Gamma > 0) < 0$. The Kuhn-Tucker condition is thus always negative and the solution is always a corner solution at $T = 0$.

Case b: $c_{0-}/er \leq \Delta\Gamma \leq c_{0-}/2r$. In this case, notice that Ψ_ϕ becomes zero for a value of ϕ which we denote by ϕ^{\max} , given by $\phi^{\max} = c_{0-}/r - 2\Delta\Gamma$.²¹ Now evaluate p at ϕ^{\max} to obtain: $p(0, \phi^{\max}, \Delta\Gamma) \equiv c_{0-}/r\Delta\Gamma$. Using this expression, evaluate Ψ at ϕ^{\max} to obtain $\Psi(0, \phi^{\max}, \Delta\Gamma) = \log[p(0, \phi^{\max}, \Delta\Gamma)] - 1$. Hence $\Psi(0, \phi^{\max}, \Delta\Gamma = c_{0-}/er) = 0$ and $\Psi(0, \phi^{\max}, \Delta\Gamma > c_{0-}/er) < 0$. The solution is $T^* = 0$ (a boundary solution for $\Delta\Gamma = c_{0-}/er$ and a corner solution for $\Delta\Gamma > c_{0-}/er$).

7.2.4. Case $\Delta\Gamma < c_{0-}/er$

We now show that if $\Delta\Gamma < c_{0-}/er$, the Kuhn-Tucker condition as a function of ϕ has two roots, which we denote by ϕ^* and ϕ^{**} , with $\phi^* < \phi^{**}$.

Notice that if $\Delta\Gamma < c_{0-}/er$, then: $p(0, \phi^{\max}, \Delta\Gamma) \equiv c_{0-}/r\Delta\Gamma > e$. This inequality implies that: $\Psi(0, \phi^{\max}, \Delta\Gamma < c_{0-}/er) > 0$. Since we know that $\Psi(0, 0, \Delta\Gamma < c_{0-}/er) < 0$, by continuity it follows that ϕ^* exists. To establish existence of the second root, ϕ^{**} , we now show that the limit of $\Psi(T, \phi, \Delta\Gamma)$ as ϕ approaches the upper bound given in (7.4) is $-\infty$. This limit is given by:

$$\lim_{\phi \rightarrow \frac{c_{0-}}{r} - \Delta\Gamma} \Psi(T, \phi, \Delta\Gamma) = \log(p) - (p - 1) + \frac{r\phi p}{c_{0-}}.$$

Since $p \rightarrow \infty$ as $\phi \rightarrow c_{0-}/r - \Delta\Gamma$, we need to collect terms in p to evaluate the resulting coefficient:

$$\lim_{\phi \rightarrow \frac{c_{0-}}{r} - \Delta\Gamma} \Psi(T, \phi, \Delta\Gamma) = 1 + \log(p) + p \left(-1 + \frac{r\phi}{c_{0-}} \right).$$

The coefficient on p is always negative because, from (7.4), $\phi < c_{0-}/r$. Hence, the limit is $-\infty$. It follows that for $\phi^* < \phi < \phi^{**}$, the solution is interior ($T^* > 0$), whereas for $0 \leq \phi \leq \phi^*$ and $\phi \geq \phi^{**}$ (with an upper bound given by $\phi < c_{0-}/r - \Delta\Gamma$), the solution is $T^* = 0$.

So far we have established that for some ranges of parameter values, we have “local” corner solutions (i.e., around $T = 0$). To show that these corner solutions

²¹It is easy to check that the second-order condition is satisfied.

are also global (i.e., that they hold for any T), it is enough to show that for any given ϕ and $\Delta\Gamma$, $\Psi(T, \phi, \Delta\Gamma)$ is strictly decreasing in T for any $T \geq 0$. This is indeed true as this derivative can be shown to be given by $-p_T r \Delta\Gamma e^{rT} / c_{0-} < 0$ (since, as can be easily verified, $p_T > 0$).

7.3. Behavior of T , ε , and Reserve Loss as a Function of ϕ .

Behavior of T . Take as given $\Delta\Gamma \in (0, c_{0-}/er)$ and consider the ranges for ϕ (established above) for which the solution for T is interior. In that case, $\Psi(T^*, \phi, \Delta\Gamma) = 0$ implicitly defines T^* as a function of ϕ (notice that $\Psi_{T^*} < 0$). Totally differentiating,

$$\frac{dT^*}{d\phi} = \frac{\Psi_{\phi} c_{0-}}{p_T r \Delta\Gamma e^{rT}},$$

where the behavior of Ψ_{ϕ} has been derived above. Hence, T is an increasing function of ϕ for $\phi \in [\phi^*, \phi^{\max})$ and a decreasing function for $\phi \in [\phi^{\max}, \phi^{**})$. For all other values of ϕ , the value of $T^* = 0$, as established above. Figure 2, Panel A, shows T^* as a function of ϕ .

Behavior of ε . For the range of interior solutions – and taking into account that $p = (1 + r + \varepsilon) / (1 + r)$ – it follows from (7.1) that:

$$\frac{d\varepsilon}{d\phi} = \frac{r(1+r)p^2}{c_{0-} \log(p)} > 0.$$

When $T^* = 0$, ε is also an increasing function of ϕ , as can be easily checked. Figure 2, Panel B, illustrates the optimal ε as a function of ϕ . Clearly, at $\phi = \phi^* = \phi^{**}$, this function need not be differentiable.

Behavior of loss of reserves. By definition, the reserve loss at T is equal to $c_{0-} - c^2$. Since c_{0-} is independent of both T and ϕ , we just need to check the behavior of c^2 as a function of ϕ for interior solutions (naturally, for $T = 0$, the reserve loss is zero). Since $c^2 = c_{0-}/p$, it follows that:

$$\frac{dc^2}{d\phi} = -\frac{c_{0-}}{p^2(1+r)} \frac{d\varepsilon}{d\phi} < 0.$$

Hence, the reserve loss is an increasing function of ϕ when the solution is interior (see Figure 2, Panel C).

7.4. Behavior of T , ε , and the Loss of Reserves as a Function of $\Delta\Gamma$

Behavior of T We now derive the behavior of the optimal values of T , ε , and the loss of reserves as a function of $\Delta\Gamma$ for a given $\phi \in (\phi^*, \phi^{**})$. As shown above, the solution is interior for $\Delta\Gamma \leq c_{0-}/er$. In this range, setting (7.1) to zero yields:

$$\frac{dT}{d\Delta\Gamma} = -\frac{p_{\Delta\Gamma}}{p_T} < 0.$$

Further, recalling the expression for c^2 from (7.3) and taking into account that, at an interior optimum, p and hence c^2 do not depend on T , it follows that

$$\lim_{\Delta\Gamma \rightarrow 0} T = \infty.$$

For any $\Delta\Gamma \geq c_{0-}/er$, the solution is $T = 0$, as shown above. In Figure 3, and without loss of generality, the given value of ϕ has been taken to be $\phi = (c_{0-}/r)(1 - 2/e)$. It can be checked that $\Psi[(c_{0-}/r)(1 - 2/e); c_{0-}/er] = 0$ and hence in Panel A, $T(\Delta\Gamma^* = c_{0-}/er) = 0$.

Behavior of ε From (7.1), it follows that when the solution is interior, p and hence ε are fully determined by ϕ and are therefore independent of $\Delta\Gamma$. Hence, for $0 < \Delta\Gamma < c_{0-}/er$, the optimal ε does not depend on $\Delta\Gamma$.²² For $\Delta\Gamma \geq c_{0-}/er$, T^* is zero. In that case – as can be easily checked – ε is an increasing function of $\Delta\Gamma$. (See Panel B in Figure 3.)

²²For $\Delta\Gamma = 0$, the optimal ε is zero since $T^* = \infty$, i.e. the peg is never abandoned.

Behavior of the loss of reserves Finally, consider the reserve loss ($\equiv c_{0-} - c^2$). Clearly, for $\Delta\Gamma \geq c_{0-}/er$, the reserve loss is zero since the peg is abandoned right away. For $0 < \Delta\Gamma < c_{0-}/er$, the reserve loss equals $c_{0-}(p-1)/p > 0$. Since p is independent of $\Delta\Gamma$ when the solution is interior, then the reserve loss is also independent of $\Delta\Gamma$ in this range.

7.5. Proof of Proposition 5.1

It is useful to define the function $K(p)$ as $K(p) \equiv (1-p)r + (r+\lambda)\log(p)$. Equation (5.9) can be re-written as: $K(p) \leq 0$. This function is concave and, for $\lambda > 0$, it intersects the x-axis twice, at $p = 1$ and at a value of p greater than 1 which we denote by p^* . The maximum value of $K(p)$ is achieved for $p = (r+\lambda)/r$. To check whether $T = 0$ is optimal we can set $T = 0$ in (5.8) to compute the value of p that would be consistent with the government budget constraint if the peg was abandoned immediately. We denote this value of p by p^0 :

$$p^0 = \frac{c_{0-}/r}{c_{0-}/r - (\Delta\Gamma + m_{0-} - c_{0-})}.$$

Using the fact that $b_{0-} + m_{0-} + y/r = c_{0-}(1+r)/r$ we can rewrite this expression as:

$$p^0 = \frac{c_{0-}/r}{b_{0-} + y/r - \Delta\Gamma}.$$

We can then use this expression for p^0 to evaluate the Kuhn-Tucker condition. If $K(p^0) < 0$, $T = 0$ is optimal, otherwise $T > 0$ is optimal. The variable p^0 is an increasing function of $\Delta\Gamma$ which takes the value 1 when $\Delta\Gamma = 0$ (in this case there is no expenditure shock at time zero and the regime continues to be sustainable). The value of p^0 converges to infinity as $\Delta\Gamma \rightarrow b_{0-} + y/r$. This limiting value of $\Delta\Gamma$ is such that government spending exhausts all the resources of the economy. Define $\Delta\Gamma^*$ as the value of $\Delta\Gamma$ such that $p^0 = p^*$. Then for $\Delta\Gamma > \Delta\Gamma^*$, $K(p^0) < 0$ so it is optimal to abandon immediately. For $\Delta\Gamma < \Delta\Gamma^*$, $K(p^0) > 0$ and $T^* > 0$. Finally, it is easy to see that p^* is an increasing function of λ . This property implies that $\Delta\Gamma^*$ is also an increasing function of λ .

Table 1. Currency crises episodes

Country	Date	Change in exch. rate (in %)	Loss of reserves (in %)	Change in real gov spending (in %)	Change in exch. rate 12 months before (in %)	Change in exch. rate 12 months after (in %)
Argentina	Jun 70	14.3	7.3	15.9	0.0	17.7
	Jun 75	160.0	75.6	3.9	100.0	1,301.7
	Feb 81	11.3	53.3	35.7	22.1	393.6
	Apr 89	386.7	15.8	34.0	200.0	29,324.8
Bolivia	Jan 02	40.1	45.9	13.7	0.0	232.2
	Nov 82	358.3	-33.3	24.0	76.2	358.3
	Nov 83	155.1	-32.1	36.8	358.3	2,483.4
	Sep 85	1421.3	24.1	-29.9	1,282.2	2,605.7
Brazil	Feb 83	38.6	50.8	-16.4	104.8	292.3
	Jul 89	42.6	-19.1	106.8	680.4	3,917.2
	Oct 91	38.7	11.9	-17.1	452.0	1,276.6
Chile	Jan 99	64.1	34.1	24.4	8.3	48.0
	Set 72	66.6	60.4	NA	0.0	900.0
	Dec 74	28.2	66.2	NA	100.0	400.0
Finland	Jun 82	19.1	15.6	20.4	0.0	62.4
	Oct 82	13.7	16.9	16.0	8.2	16.7
	Sep 92	16.3	10.1	33.3	-8.3	50.4
Indonesia	Nov 78	50.6	3.6	12.6	0.0	51.1
	April 83	37.8	54.1	27.3	7.8	42.3
	Sep 86	44.3	8.9	9.5	1.2	44.9
Israel	Nov 74	42.9	24.1	NA	0.0	66.7
	Nov 77	47.6	-11.1	NA	23.0	78.6
	Oct 83	31.5	2.3	NA	119.2	530.2
Malaysia	Aug 97	12.4	15.8	15.1	5.4	57.2
Mexico	Sep 76	58.7	39.0	16.8	0.0	82.9
	Feb 82	67.7	27.7	82.7	13.8	277.6
	Dec 94	54.4	75.0	13.2	10.8	121.8
Norway	May 86	12.2	-3.5	20.5	-22.1	-3.6
Peru	Jun 76	44.4	54.5	17.8	16.3	73.4
	Oct 87	25.9	49.2	6.3	13.9	1,473.3
	Sep 88	657.6	42.8	-17.5	107.6	10,719.9
Philippines	Feb 70	46.7	-29.9	15.0	0.3	63.3
	Oct 83	27.3	80.7	0.4	26.6	63.6
	Jul 97	15.4	7.4	17.1	0.7	59.5
Spain	Feb 76	11.3	0.4	2.3	6.3	15.1
	Jul 77	22.0	15.7	-9.4	2.5	13.2
Sweden	Aug 77	11.5	13.4	20.0	-2.0	3.7
	Oct 82	18.2	-5.7	13.9	12.3	24.3
	Nov 82	18.8	-49.7	13.5	-5.4	41.1
Turkey	Nov 84	17.7	-38.8	21.2	0.0	15.3
	July 97	24.3	23.2	33.9	1.7	64.1
	Aug 70	65.1	-84.1	17.8	0.0	65.1
Uruguay	Jan 80	100.0	28.0	-9.4	40.0	155.0
	Mar 84	21.2	53.3	3.7	98.8	126.3
	Feb 01	36.1	6.4	58.7	21.2	93.0
Venezuela	Mar 72	99.6	-119.4	14.1	0.0	241.1
	Nov 82	38.7	37.4	44.1	18.4	176.3
	Feb 84	74.4	-40.0	-19.0	0.2	74.4
	Dec 86	93.3	37.2	13.5	0.0	93.3
	Mar 89	154.3	35.7	-9.8	0.0	197.3
	Dec 95	70.6	22.1	-3.2	0.0	178.1

Source: Authors' calculations based on data from *International Financial Statistics* (IFM)

Figure 1. Histogram of reserve losses

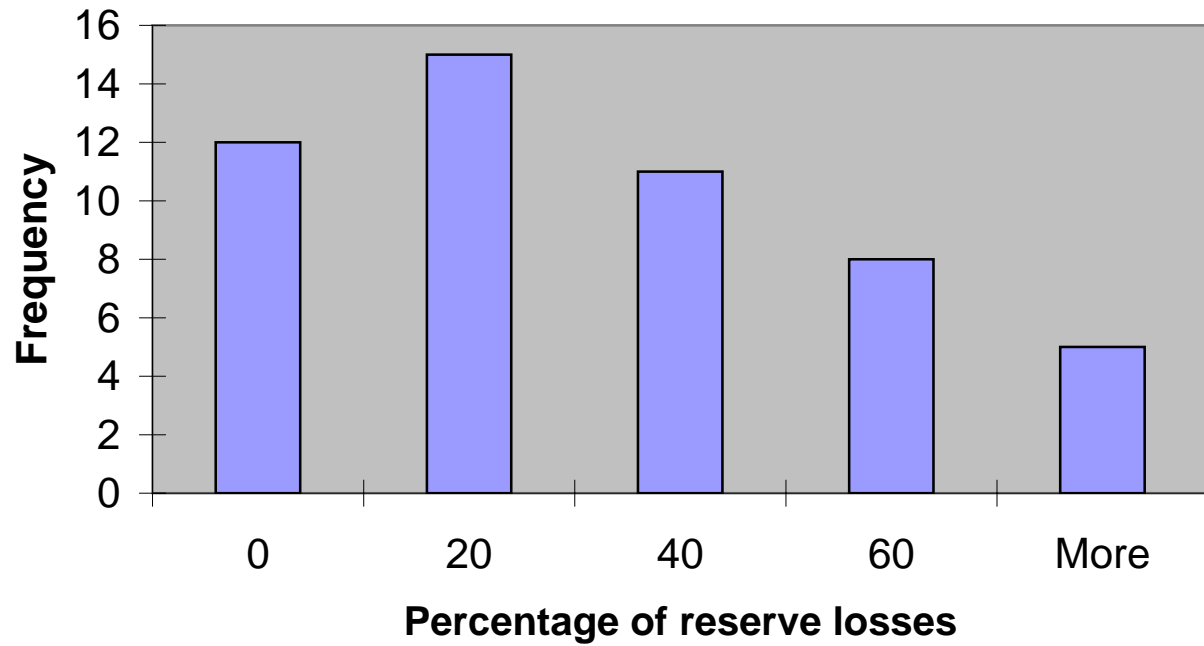


Figure 2. Optimal policy as a function of cost of abandoning

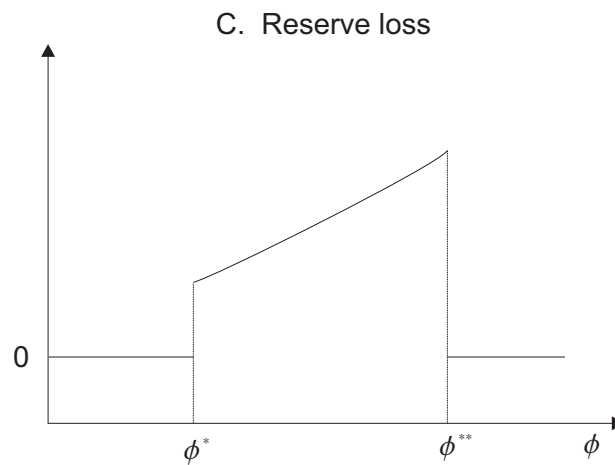
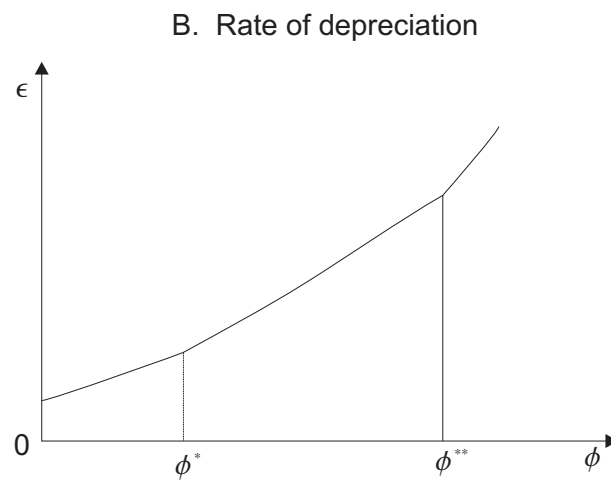
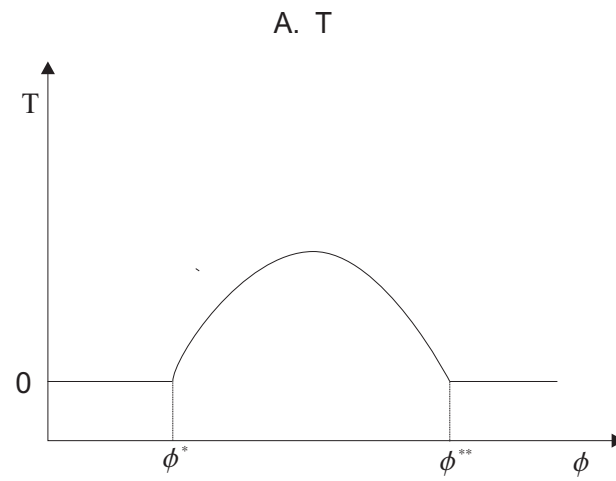


Figure 3. Optimal policy as a function of the fiscal shock

