

This PDF is a selection from an out-of-print volume from the National Bureau of Economic Research

Volume Title: The Purchase of Medical Care Through Fixed Periodic Payment

Volume Author/Editor: Pierce Williams, assisted by Isabel C. Chamberlain

Volume Publisher: NBER

Volume ISBN: 0-87014-019-1

Volume URL: <http://www.nber.org/books/will32-1>

Publication Date: 1932

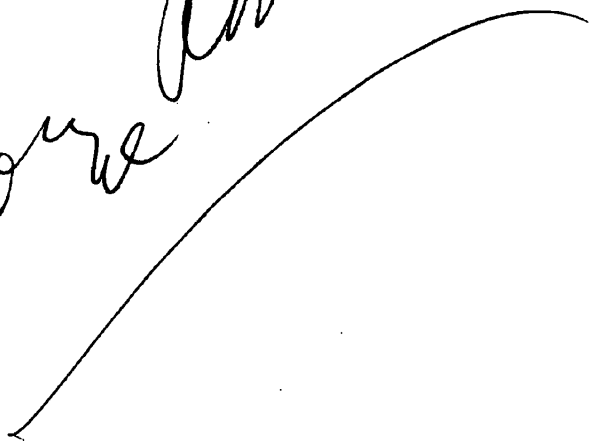
Chapter Title: Front matter to "The Purchase of Medical Care Through Fixed Periodic Payment"

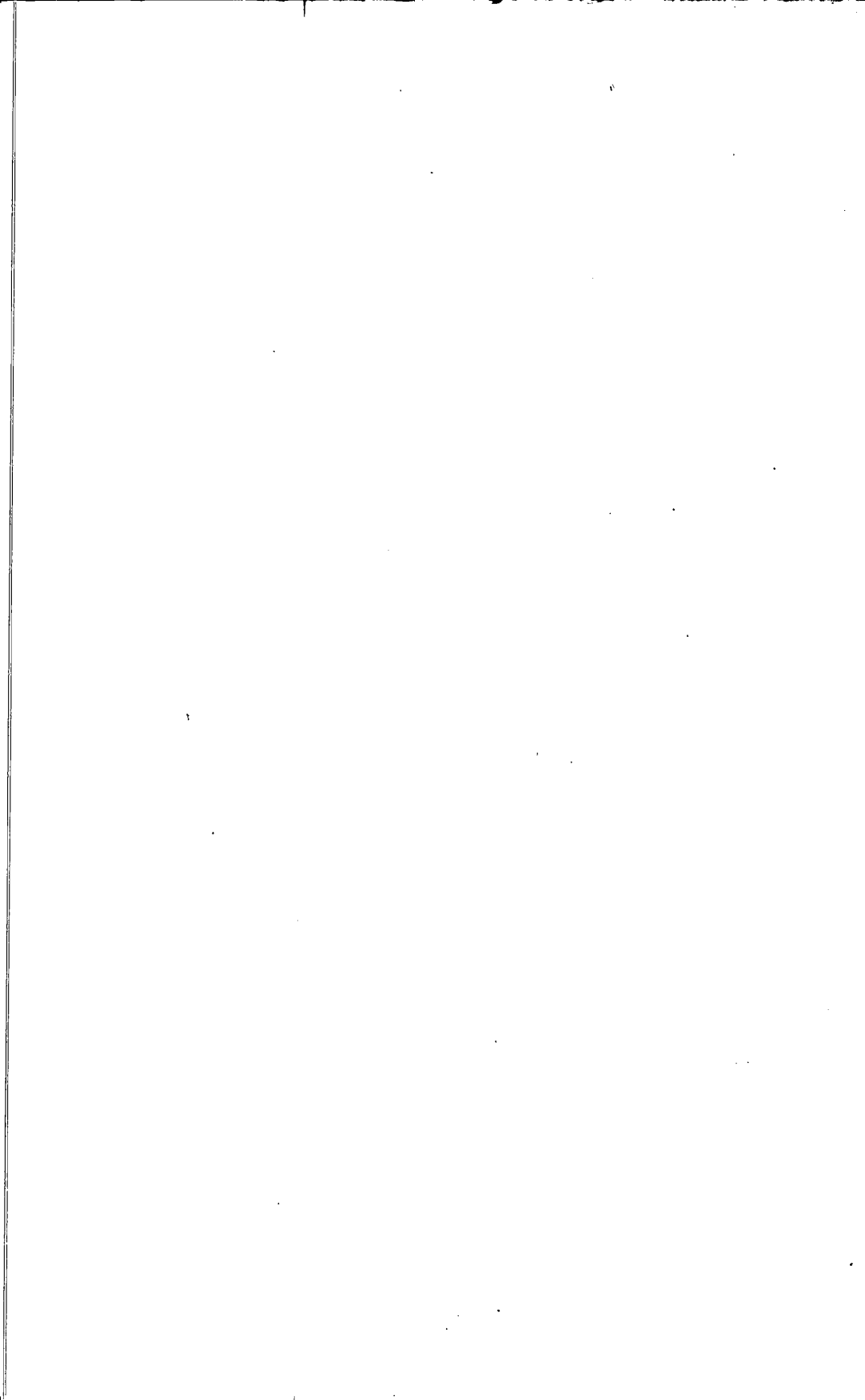
Chapter Author: Pierce Williams

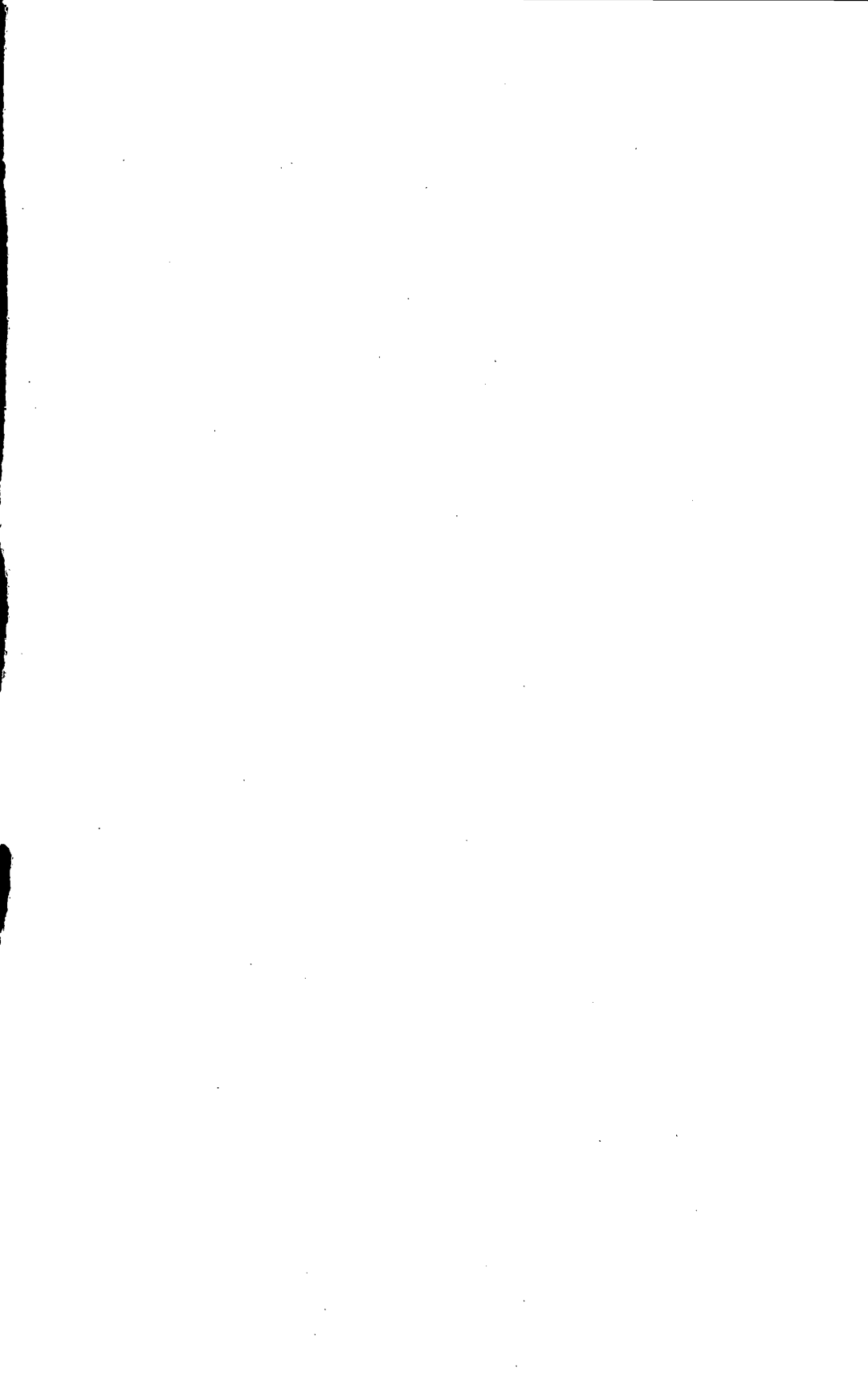
Chapter URL: <http://www.nber.org/chapters/c6502>

Chapter pages in book: (p. -23 - -14)

George Owen







National Bureau of Economic Research, Inc.

51 MADISON AVENUE, NEW YORK

Publications in the order of their issue

- INCOME IN THE UNITED STATES (1921).**
By WESLEY C. MITCHELL, WILLFORD I. KING, FREDERICK R. MACAULAY AND OSWALD W. KNAUTH
Volume I. A summary of an Investigation of the Amount and Distribution of Income in the United States, 1909-1919. 152 pages, \$1.58.
Volume II. Details. 440 pages, \$5.15.
- DISTRIBUTION OF INCOME BY STATES IN 1919 (1923).**
By OSWALD W. KNAUTH. 32 pages.
- BUSINESS CYCLES AND UNEMPLOYMENT (1923).**
By the staff of the Bureau with 16 collaborators.
Results of an investigation made for the President's Conference on Unemployment. 405 pages, \$4.10.
- EMPLOYMENT, HOURS, AND EARNINGS IN PROSPERITY AND DEPRESSION (1923).**
By WILLFORD I. KING.
Supplements Business Cycles and Unemployment. 147 pages, \$3.10.
- THE GROWTH OF AMERICAN TRADE UNIONS, 1880-1923 (1924).**
By LEO WOLMAN. 170 pages, \$2.50.
- INCOME IN THE VARIOUS STATES. ITS SOURCES AND DISTRIBUTION, 1919, 1920, AND 1921 (1925).**
By MAURICE LEVEN AND WILLFORD I. KING. 306 pages, \$3.50.
- BUSINESS ANNALS (1926).**
By WILLARD L. THORP AND WESLEY C. MITCHELL. 384 pages, \$2.50.
- MIGRATION AND BUSINESS CYCLES (1926).**
By HARRY JEROME. 256 pages, \$2.50.
- BUSINESS CYCLES: THE PROBLEM AND ITS SETTING (1927).**
By WESLEY C. MITCHELL, 512 pages, \$5.
- THE BEHAVIOR OF PRICES (1927).**
By FREDERICK C. MILLS, 598 pages, \$7.
- TRENDS IN PHILANTHROPY (1928).**
By WILLFORD I. KING. 78 pages, \$1.75.
- RECENT ECONOMIC CHANGES (1929).**
An investigation by a special staff of the National Bureau of Economic Research, Inc., for the President's Committee on Recent Economic Changes. An analysis of post-war developments in American economic life (1922-1928). 2 volumes, 900 pages, \$7 per set.
- INTERNATIONAL MIGRATIONS, VOL. I, STATISTICS (1929).**
Compiled by IMRE FERENCZI and edited by WALTER F. WILLCOX, 1,112 pages, \$7.
- THE NATIONAL INCOME AND ITS PURCHASING POWER (1930).**
By WILLFORD I. KING. 394 pages, \$5.
- CORPORATION CONTRIBUTIONS TO ORGANIZED COMMUNITY WELFARE SERVICES (1930).**
By PIERCE WILLIAMS AND FREDERICK E. CROXTON. 347 pages, \$2.
- PLANNING AND CONTROL OF PUBLIC WORKS (1930).**
By LEO WOLMAN. 294 pages, \$2.50.
- INTERNATIONAL MIGRATIONS, VOL. II, INTERPRETATIONS (1931).**
By a Group of Scholars in Different Countries. Edited by WALTER F. WILLCOX. 715 pages, \$5.
- THE SMOOTHING OF TIME SERIES (1931).**
By FREDERICK R. MACAULAY. 172 pages, \$2.
- THE PURCHASE OF MEDICAL CARE THROUGH FIXED PERIODIC PAYMENT (1932).**
By PIERCE WILLIAMS. 320 pages, \$3.

PUBLICATIONS
OF THE
NATIONAL BUREAU OF ECONOMIC RESEARCH, INCORPORATED

NUMBER

20

THE PURCHASE OF MEDICAL CARE
THROUGH FIXED PERIODIC PAYMENT

National Bureau of Economic Research, Inc.

Incorporated under the Membership Corporation Laws of the State of New York, Jan. 29, 1920.

ITS ORGANIZATION AND PURPOSES

THE National Bureau of Economic Research was organized in 1920 in response to a growing demand for exact and impartial determinations of facts bearing on economic, social, and industrial problems.

It seeks not only to find facts and make them known, but to determine them in such manner and under such supervision as to make its findings carry conviction to Liberal and Conservative alike.

Entire control of the Bureau is vested in a Board of twenty-one directors, representing universities, learned and scientific societies, financial, industrial, agricultural, commercial, labor, and technical organizations.

Rigid provisions in the Charter and By-Laws guard the Bureau from becoming a source of profit to its members, directors, or officers and from becoming an agency for propaganda. No report of the Research Staff may be published without the approval of the Directors, and any Director who dissents from any finding approved by a majority of the Board may have such dissent published with the majority report.

The Officers and Directors are as follows:

HARRY W. LAIDLER, *Chairman of the Board*

OSWALD W. KNAUTH, *President*

JOSEPH H. WILLITS, *Vice-President*

GEORGE E. ROBERTS, *Treasurer*

PIERCE WILLIAMS, *Executive Director*

Directors at Large

OSWALD W. KNAUTH, Executive Vice-President, R. H. Macy and Company, New York.

HARRY W. LAIDLER, Executive Director, The League for Industrial Democracy, New York

L. C. MARSHALL, Institute for the Study of Law, Johns Hopkins University, Baltimore.

GEORGE O. MAY, Member of the Firm of Price, Waterhouse and Company, New York.

ELWOOD MEAD, United States Commissioner of Reclamation, Washington, D. C.

SHEPARD MORGAN, Vice-President, Chase National Bank.

GEORGE SOULE, Director, The Labor Bureau, Inc.

N. I. STONE, Industrial and Financial Consultant, New York.

MATTHEW WOLL, President, Union Labor Life Insurance Company.

Directors by University Appointment

THOMAS S. ADAMS, Professor of Political Economy, Yale University.

EDWIN F. GAY, Professor of Economic History, Harvard University.

HARRY JEROME, Professor of Economics, University of Wisconsin.

HARRY ALVIN MILLIS, Professor of Economics, University of Chicago.

WESLEY C. MITCHELL, Professor of Economics, Columbia University.

JOSEPH H. WILLITS, Professor of Industry, and Director, Department of Industrial Research, Wharton School of Finance and Commerce, University of Pennsylvania

Directors by Appointment of Other Representative Organizations

HUGH FRAYNE, American Federation of Labor

DAVID FRIDAY, American Economic Association

LEE GALLOWAY, American Management Association

GEORGE E. ROBERTS, American Bankers Association

MALCOLM C. RORTY, American Statistical Association

A. W. SHAW, National Publishers Association

ROBERT B. WOLF, American Engineering Council

Research Staff

EDWIN F. GAY, *Director*

MEREDITH B. GIVENS

SIMON KUZNETS

FREDERICK R. MACAULAY

WESLEY C. MITCHELL, *Director*

FREDERICK C. MILLS

WILLARD L. THORP

PIERCE WILLIAMS

LEO WOLMAN

THE PURCHASE OF
Medical Care
THROUGH FIXED PERIODIC PAYMENT

by

PIERCE WILLIAMS

of the staff of the

NATIONAL BUREAU OF ECONOMIC RESEARCH
INCORPORATED

assisted by

ISABEL C. CHAMBERLAIN

New York

NATIONAL BUREAU OF ECONOMIC RESEARCH, INC.

1932

COPYRIGHT, 1932, BY
NATIONAL BUREAU OF ECONOMIC RESEARCH, INC.

All rights reserved

FIRST PRINTING, JUNE, 1932

PRINTED IN THE UNITED STATES OF AMERICA
BY J. J. LITTLE & IVES COMPANY, NEW YORK

RELATION OF THE DIRECTORS
TO
THE ECONOMIC WORK OF THE BUREAU

- 1—The object of the Bureau is to ascertain and to present to the public important economic facts and the interpretation thereof in a scientific and impartial manner, free from bias and propaganda. The Board of Directors is charged with the responsibility of ensuring and guaranteeing to the public that the work of the Bureau is carried out in strict conformity with this object.
- 2—The Directors shall appoint one or more directors of research chosen upon considerations of integrity, ability, character, and freedom from prejudice, who shall undertake to conduct economic researches in conformity with the principles of the Bureau.
- 3—The director or directors of research shall submit to the members of the Board, or to its executive committee when such is constituted and to which authority has been delegated by the Board, proposals in respect to researches to be instituted; and no research shall be instituted without the approval of the Board, or of its executive committee.
- 4—Following approval by the Board, or its executive committee, of a research proposed, the director or directors of research shall as soon as possible submit to the members of the Board, by written communication, a statement of the principles to be pursued in the study of the problem and the methods to be employed; and the director or directors of research shall not proceed to investigate, study, and report in detail, until the plan so outlined has been approved by the Board or the executive committee thereof.
- 5—Before the publication of the results of an inquiry the director or directors of research shall submit to the Board a synopsis of such results, drawing attention to the main conclusions reached, the major problems encountered and the solutions adopted, the nature of the sources from which the basic facts have been derived, and such other information as in their opinion shall have a material bearing on the validity of the conclusions and their suitability for publication in accordance with the principles of the Bureau.
- 6—A copy of any manuscript proposed to be published shall also be submitted to each member of the Board, and every member shall be entitled, if publication be approved, to have published also a memorandum of any dissent or reservation he may express, together with a brief statement of his reasons therefor, should he so desire. The publication of a volume does not, however, imply that each member of the Board of Directors has read the manuscript and passed upon its validity in every detail.
- 7—The results of any inquiry shall not be published except with the approval of at least a majority of the entire Board and a two-thirds majority of all those members of the Board who shall have voted on the proposal within the time fixed for the receipt of votes on the publication proposed; such limit shall be 45 days from the date of the submission of the synopsis and manuscript of the proposed publication, except that the Board may extend the limit in its absolute discretion, and shall upon the request of any member extend the limit for a period not exceeding 30 days.
- 8—A copy of this memorandum shall, unless otherwise determined by the Board, be printed in each copy of every work published by the Bureau.

Resolution Adopted Oct. 25, 1926.

