

This PDF is a selection from an out-of-print volume from the National Bureau of Economic Research

Volume Title: Commodity Flow and Capital Formation, Volume 1

Volume Author/Editor: Simon Kuznets

Volume Publisher: NBER

Volume ISBN: 0-87014-033-7

Volume URL: <http://www.nber.org/books/kuzn38-1>

Publication Date: 1938

Chapter Title: Part II: Annual Output of Finished Commodities, in Current and 1929 Prices

Chapter Author: Simon Kuznets

Chapter URL: <http://www.nber.org/chapters/c4743>

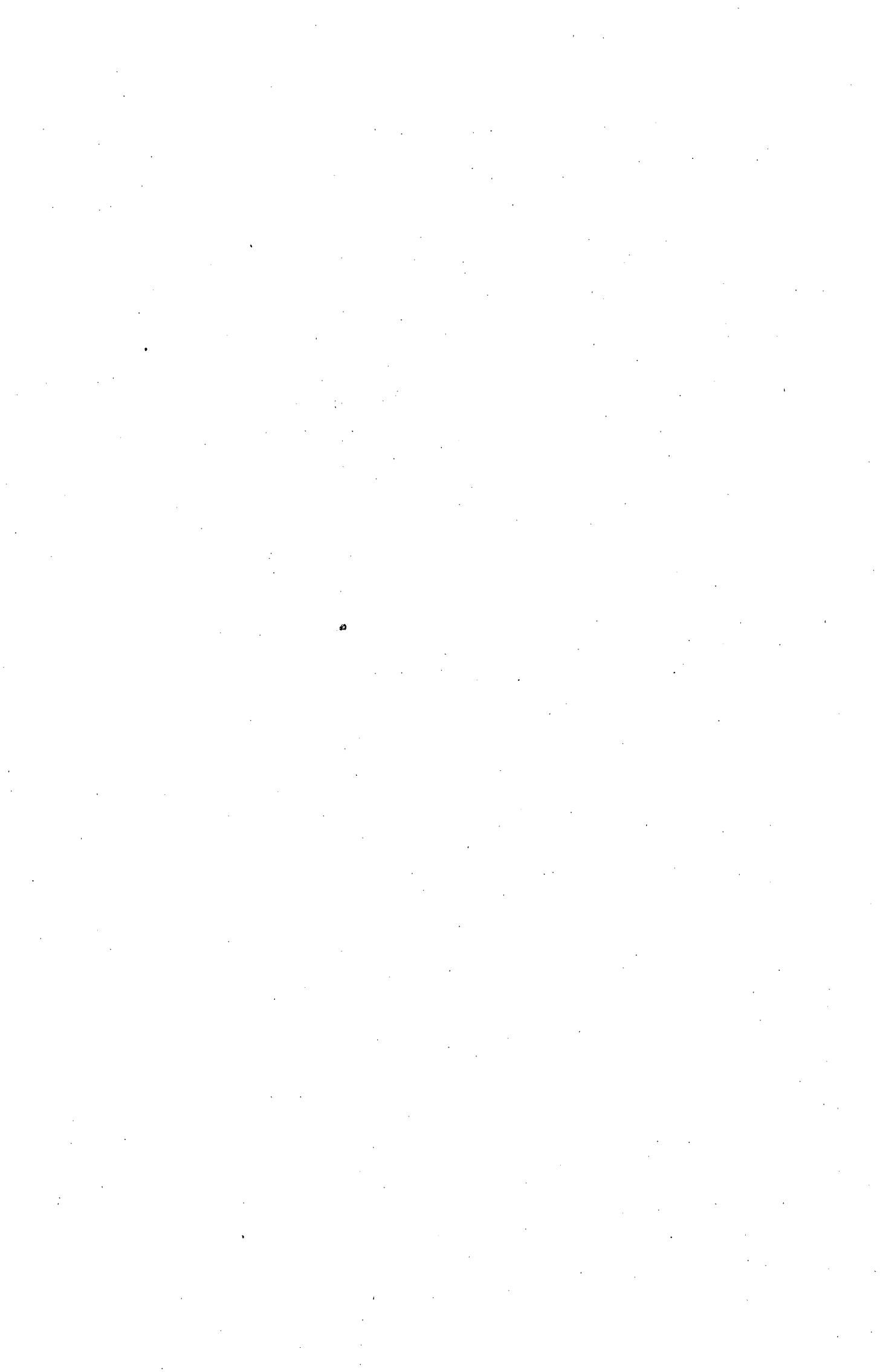
Chapter pages in book: (p. 119 - 160)

PART II

ANNUAL OUTPUT OF FINISHED COMMODITIES,
IN CURRENT AND 1929 PRICES

Preface

1 Output of Finished, Non-Manufactured Commodities	121
2 Output of Finished Manufactures and Servicing for Intercensal Years	122
3 Adjustment for Imports and Exports	123
4 Adjustment for Price Changes	123
Basic Tables II—1 to II—7	127—159



PART II
ANNUAL OUTPUT OF FINISHED COMMODITIES,
IN CURRENT AND 1929 PRICES

P R E F A C E

THE statistical analysis in Part I yielded for each odd year in the period the value of output, by minor commodity groups, of finished manufactured commodities, as well as of total output of construction materials, of other unfinished manufactured commodities, and of servicing and repairs rendered by manufacturing establishments. The data relating to construction materials are now segregated for separate treatment and are not referred to again until Part VI, which is devoted to the derivation of the estimates of the volume of construction. The estimated output of unfinished manufactured products is not used again in the analysis, except as a subsidiary item in Part VII. The value of servicing and repairs is analyzed further in Part II, but is not utilized again until Part V. The estimate of the output of finished manufactured commodities, however, constitutes the departure point for further detailed study in Parts II-V, an analysis which by supplementing and refining the information contained in Part I finally yields annual estimates of the flow of finished goods to ultimate consumers, at the cost to them in either current or constant prices.

To this transition from odd-year values of the output of finished manufactured commodities in manufacturers' current prices to the annual values of the flow of finished products to ultimate consumers at the cost to them in either current or constant prices, the analysis in Part II contributes several distinct steps. First, the output of the small group of finished commodities that do not pass through the manufacturing process is estimated. Second, the output of finished manufactured commodities, by minor commodity groups, and the value of servicing are estimated for the intercensal years. Third, the domestic output of finished commodities is adjusted for imports and exports, yielding the volume of finished commodities, pro-

duced or imported, destined for domestic consumption. Finally, an attempt is made to adjust the result obtained in step three for changes in prices. These four steps result in an annual estimate, in both current and constant producers' prices, of the flow of finished commodities, by minor commodity groups, destined for domestic consumption.

I OUTPUT OF FINISHED, NON-MANUFACTURED COMMODITIES

Only a few commodities reach the ultimate consumer without first passing through the manufacturing process: fruits and vegetables, dairy and poultry products, the products of fisheries, and coal. The inclusion of these commodities in our estimates was advisable for two reasons. First, it was desirable to supplement our estimates in order to obtain the total of finished commodities flowing to ultimate consumers.¹ Second, the later parts of this study, which deal with distributive margins, are based upon a comparison of the value of finished products when they leave the producing establishments with their value as they pass through the distributive channels to their ultimate consumers. Non-manufactured finished commodities, like finished manufactures, pass through the channels of wholesale and retail trade and cannot always be segregated from the latter at that stage. Hence, to assure the comparability of the value of output with that of the flow to ultimate consumers at the cost to them, it was necessary to add to the output of finished manufactured products, at manufacturers' prices, the output of finished, non-manufactured commodities, at producers' prices.

Each group of non-manufactured commodities

¹ Some of the less important non-manufactured finished commodities, such as flowers, non-manufactured ice, and game, could not be included, for lack of data.

that contains a finished part represents a mixed commodity item, and must, therefore, be subjected to an analysis similar to that carried through in Table I-3. The unfinished parts of the products of farms and fisheries were segregated on the basis of the value of materials consumed in manufacturing; the finished part was then obtained as a remainder. For anthracite and bituminous coal the part going to ultimate consumers was evaluated directly, on the basis of the estimate for 1923 provided by the Bureau of Mines. The allocation of the mixed commodity groups in Table II-1 was approximate, a qualification especially important for bituminous and anthracite coal, since they, by themselves, constitute a distinct minor commodity subgroup.

2 OUTPUT OF FINISHED MANUFACTURES AND SERVICING FOR INTERCENSAL YEARS

The total output of finished manufactured commodities, as estimated by minor commodity groups in Part I, is available only for Census of Manufactures years. Consequently our second task was to estimate the corresponding totals for the intercensal years, and by adding the few finished, non-manufactured commodities arrive at an annual series of the total output of finished commodities. Similarly, the volume of servicing and repairs rendered by manufacturing establishments had to be interpolated.

If the estimate of intercensal year values by minor commodity groups is to be more than a guess, data are needed that shed some light on the annual changes in manufacturing output for a fairly large number of specific branches of the manufacturing industry. At this point two minor commodity groups distinguished in Part I had to be abandoned—6b, miscellaneous perishable products, and 8, personal furnishings—and the value of their output distributed among the other commodity groups. These two groups could not be retained in the subsequent analysis partly because no basis for intercensal year estimates was available for them, partly because it would have been impossible to follow them through the distributive channels (in Part III):

The apportionment, among the other groups, of the items in the two abandoned commodity classes, and the effect on the totals for the former are shown in detail in Table II-2 and Note A to it. Since both the miscellaneous perishable and personal furnishings groups were of relatively small absolute size, and their totals were distributed among a fair number of absolutely large

commodity groups, the effect on most of the latter was quite small. In 1929 the resulting percentage additions in these other commodity groups were as follows: group 2, 0.4; 3, 1.4; 7, 17.2; 12, 2.1; 13, 25.9; 19, 1.9; 20, 55.3; 22, 1.7. Thus, significant increases occurred in the totals for dry goods and notions; toys, games, and sporting goods; and portable household appliances and other supplies. In the last two groups this increase meant a considerable addition of commodities with an average life somewhat shorter than that characterizing the commodities that had heretofore been included.

The data used in the estimates of the values for intercensal years are summarized in Note A to Table II-3, which indicates the exact basis of the estimate for each minor commodity group for each year. For years since 1926 general reliance was placed upon the gross income data for manufacturing corporations, reported annually in Statistics of Income for major and minor groups of manufacturing industries. For earlier years Pennsylvania and Massachusetts state census data were used, as well as the results of a special tabulation of corporate income tax returns by R. C. Epstein. In addition, several special indexes were used. The attempt throughout was to obtain interpolating indexes that were specific and as equal as possible in scope to the minor commodity groups. Where a selection among several interpolation indexes was possible, we chose the index that followed most closely the movement of the Census totals. Since frequent basing points were available in the form of the totals for the Census years, and the interpolation was thus confined to obtaining the value of the middle year in each set of three, the possible errors in these intercensal year estimates could not be appreciable.

For servicing and repairs rendered by manufacturing establishments the estimate of intercensal year values was based upon the interpolated values of output of the most closely related minor commodity groups. Thus, for servicing of consumers' durable commodities the annual estimate of output of passenger cars and auto parts was used as an interpolation index; for servicing producers' durable, except railroad repair shops, the combined output of industrial machinery, locomotives and railroad cars, and shipbuilding. Only for the volume of servicing rendered by railroad repair shops was a special interpolation index used, based on the maintenance-of-equipment expenditures as reported by the Interstate Commerce Commission. The resulting annual estimates

OUTPUT OF FINISHED COMMODITIES

imates of the output, by minor commodity groups, of finished manufactured products, and of the volume of servicing and repairs are brought together in Table II-3.

3 ADJUSTMENT FOR IMPORTS AND EXPORTS

The estimates obtained so far were of the domestic output of finished commodities, while the eventual aim was to study the flow of finished commodities to ultimate domestic consumers. The source of such a flow may be outside the country's industrial system, the commodities coming in as imports; on the other hand, some part of the domestic output of finished commodities may go abroad. It was therefore necessary to pass from the domestic output of finished commodities to the flow of finished commodities destined for domestic consumption, a transition that was accomplished by adjusting the value of domestic output for imports and exports.

In this adjustment we do not, of course, deal with total imports and exports. To every minor commodity group, the value of imports of finished commodities alone must be added. From every minor commodity group the value of finished exports alone must be subtracted; this value includes, however, total exports of mixed commodity items. Finished exports and imports were segregated for 1929, entailing a detailed analysis of the commodity breakdown of the statistics on foreign trade; the full details of the resulting classification are given in Table III-2.²

Since the adjustment for imports and exports is to be applied to the value of domestic output when measured in manufacturers' or producers' prices, the values of imports and exports must be in comparable prices. It was assumed that imports, flowing primarily to wholesalers, are in prices comparable to producers' prices in this country. But most exports are in terms of prices charged by wholesalers, and for our purpose, are overvalued to the extent of the margins added by exporting wholesalers. While it is difficult to say that wholesalers' prices are the basis of valuation for all finished commodities exported, and while for some finished commodities the export price may be lower than the domestic price, it seemed most reasonable to assume that on the whole the export values were in terms of prices charged by wholesalers, and should therefore be scaled downward

by the spread between prices charged by producers and by wholesalers. Such spreads were estimated for each minor commodity group on the basis of operating expenses shown for 1929 in the *Census of Distribution: Wholesale Trade*. The exact magnitude of the adjustment may be seen by comparing the adjusted export values (Table II-4) with the unadjusted export values (Table III-2). The total scaling down amounted in 1929 to 246 million dollars, out of a total 2,069 million of exports of finished commodities.

Imports and exports were adjusted for in detail for 1929 alone. Table II-4 shows the magnitude of the net balance, both absolute and as a percentage of total domestic output for each minor commodity group. For the groups in which this percentage in 1929 was in excess of 10 the net balance of imports and exports for other years was measured by addition and subtraction of the single commodity values included in each group, with the result that the ratio of the net balance to domestic output was allowed to vary from year to year. In other groups, where the percentage of the net balance to domestic output was in 1929 less than 10, it was considered permissible to apply to the domestic value of output in other years a constant percentage adjustment equal to that for 1929. The only exception was for food products and passenger cars, both because of the large absolute magnitude of the adjustments involved and their variability in percentage terms over time.

This adjustment for imports and exports yielded annual estimates of the value, by minor commodity groups, of finished commodities produced and imported, destined for domestic consumption (Table II-5).

4 ADJUSTMENT FOR PRICE CHANGES

The most important step in the attempt to measure the flow of finished commodities and of servicing in constant prices was to construct indexes that would show changes in producers' prices for each minor commodity group and each type of servicing so far distinguished. This involved: (a) the choice of the appropriate price data; (b) their combination into indexes, entailing the choice of weights and base year; (c) the adjustment of values for those minor commodity groups for which no specific price indexes could be constructed.

(a) A basic decision in the selection of price data involved the choice between the wholesale price series collected and published by the Bureau of Labor Statistics and the prices that could be de-

² This table was placed in Part III because it bears directly upon the derivation of distributive margins in 1929.

rived from the Census of Manufactures itself. The character of the Bureau of Labor Statistics wholesale price data is well known. Prices could be obtained from the Census of Manufactures whenever it reported both the value and quantity of output of a given commodity for more than one year. By dividing the dollar value by the number of quantity units, we computed several such price series.

At first glance the measures derived from the Census of Manufactures appear a better gauge of changes in prices charged by manufacturers than do the wholesale prices published by the Bureau of Labor Statistics, since the former are taken directly from the records of manufacturing enterprises and the latter are collected also from trade journals and other sources, and may in many cases represent prices charged or quoted by wholesalers. However, further analysis dispels this impression. First, the movement of prices derived from the Census may reflect changes in quality, which are especially frequent among finished commodities; consequently, the adjustment for changes in these prices will not allow the movement of output to reflect changes in quality. For example, the Census may show for two successive years the same quantity of pairs of shoes produced, but the quality of the shoes may have risen. Other conditions being equal, the dollar value of output will rise from the first to the second year, and the price derived from the Census will show the same rise. The application of this price in the adjustment for price changes will indicate a constant output, during the time that there has actually been an expansion in output, since although the same number of units has been turned out, their average quality has risen. The price quotations of the Bureau of Labor Statistics, on the contrary, being for one and the same specific commodity, will in this case show no rise, and the application of these prices to the dollar volume will show an increase of output in terms of constant prices, a true reflection of the expansion in the physical volume of production. In some cases, it is true, the Bureau of Labor Statistics indexes fail to measure properly the price changes of a qualitatively standard commodity. But the attempt is made, whereas by definition, the price measures derived from the Census reflect changes in quality.

Thus, even when prices derivable from Census data are available, they are less suitable for our purposes than Bureau of Labor Statistics quotations, whenever the commodity in question may

be undergoing changes in quality that are not reflected in the quantity reports of the Census. Moreover, the Census prices are available only for Census years, and then only for a few commodities. The second limitation is, of course, largely due to the difficulty of a quantity count for qualitatively heterogeneous commodities. Consequently, indexes based on Census data would have made possible the adjustment of dollar values for only a few minor commodity groups. For these reasons, it was decided to use Bureau of Labor Statistics wholesale price data, supplementing them by such other price series as seemed to be needed and were available.

The fact that Bureau of Labor Statistics quotations may refer to prices charged by wholesalers rather than to those charged by manufacturers or producers is not, from our point of view, a serious defect. The use made of the price indexes demands that they shall be faithful gauges of the *movement* of prices charged by manufacturers rather than of their *absolute magnitude* at any given time. In view of the relatively small spread between manufacturers' and wholesalers' prices and the relative stability of distributive margins for most finished commodities, it may be assumed that the movement of wholesalers' prices offers a good approximation to the movement of prices charged by producers.³

After deciding to use primarily Bureau of Labor Statistics wholesale price data, we next had to choose specific price series, or group and sub-group indexes that would reflect the price changes for the several minor commodity groups of our classification. The indexes chosen are described in detail in Note A to Table II-6. They are appreciably more satisfactory after than before 1926, owing to the greater quantity of price data in the later period. In the absence of price data for important groups of producers' durable goods (industrial machinery, electrical machinery, locomotives and railroad cars) in Bureau of Labor Statistics publications, the movement of prices was studied from Interstate Commerce Commission data.

(b) The decision to use Bureau of Labor Statistics data in no way predetermined the selection of weights and of the base year. The most appropriate weights are the quantities of finished

³ See Part IV. This, of course, does not dispose of another possible defect of the reported prices, i.e., that they are prices quoted rather than actually charged. Statistical analysis can do little to remedy this defect, which, however, should be taken into consideration in interpreting the results of the adjustment for price changes.

OUTPUT OF FINISHED COMMODITIES

manufactured commodities produced and imported, destined for domestic consumption. Fortunately, the weights used by the Bureau of Labor Statistics itself are fairly good approximations to these ideal weights. Their character appears clearly from the following description in its latest comprehensive bulletin on wholesale prices (*Wholesale Prices, 1931*, Bul. 572, Washington, 1933): "In compiling the index numbers the individual items were weighted according to the importance of each article in the country's market. The weighting factors for 1930 and 1931 were based on the census of manufactures data as compiled by the Bureau of the Census for the years 1925 and 1927, and, in cases where the census of manufactures data were not available, other official or dependable private sources were used. Beginning with January, 1932, weighting factors based upon the census years 1927 and 1929 were employed. However, in the case of farm products and for agricultural commodities included in the foods group, the 3-year average 1927-1929 was used in determining the weighting factors" (p. 1).⁴

It might have been possible, by dint of considerable labor, to refine the weighting system of the Bureau of Labor Statistics, using more recent Census data and segregating finished from unfinished manufactured products more carefully. But experience indicates that the effect of weights on the price indexes can easily be exaggerated. In our own computation comparison of price indexes for 1929 based on 1927-29 and on 1923-25 weights reveals but slight differences. The Bureau of Labor Statistics reported a similar lack of effect when weights were shifted from a 1909 to a 1919 base (*Wholesale Prices, 1890-1923*, Bul. 367, Appendix E, pp. 230-4). We therefore decided to use the weights based on the Census data for 1927-29, as used and reported by the Bureau of Labor Statistics; and to use the 1923-25 weights for those indexes for the years before 1926 for which there was no exact counterpart in the later half of the period.

The final choice to be made before the specific price indexes could be computed was that of the base year. Since Census data for manufacturing, distribution of sales of manufactured products, distributive trades, and contract construction, were available for 1929, and it is, therefore, the basic year in this study, it was thought best to re-

tain the identity of the dollar totals for 1929, when expressed in both current and constant prices. Hence, 1929 was chosen as the base year for which the price level was to be taken as 100. Also, since in most groups the price level moved little from 1925 to 1929, prices in 1929 were approximately at the level characterizing the middle three or the middle five years of the entire period, 1919-33. Of course, no unwarranted importance should be attached to the assumption that prices in 1929 were at the level of 100, and certainly no attribution of normality. Such a misinterpretation of basing points of time, unfortunately too common, would of course be equally erroneous whether our base year was 1929, any other single year, or any specific set of years.

Table II-6 brings together all the group price indexes that it was possible to construct, and its notes indicate the coverage. In several minor commodity groups the coverage is fairly complete; in others it runs below 50 per cent; in still others it is perilously narrow. The attempt was made to construct specific price indexes for as many minor commodity groups as possible, since a specific index of even limited coverage is preferable to a price index whose area of coverage had but an indirect relation to the area represented by the minor commodity group.

(c) Nevertheless, there are still a few minor commodity groups for which no specific price index, no matter how narrow in coverage, could be constructed. Table II-7 shows, for those minor commodity groups for which specific price indexes could be computed, the dollar values adjusted for price changes; and the combined value by the four major commodity classes in both 1929 and current prices. The difference between the combined total of these minor groups in current prices and the comparable complete total for each major commodity class is the dollar value, in current prices, for which no specific price indexes could be computed. On the whole, the preponderant part of each major commodity class total could be adjusted for price changes with the help of specific price indexes. The percentages so adjusted range from 94 to 96 for the perishable class; from 96 to 97 for semidurable; from 72 to 80 for consumers' durable; and from 56 to 63 for producers' durable. But, high as these percentages are, they still leave in each major commodity class some minor commodity groups for which no specific price indexes could be computed.

In the absence of such specific price gauges it

⁴ See also the special release by the Bureau of Labor Statistics in March 1935: *Quantity Weighting Factors Used in Calculating Index Numbers, 1890-1934*.

PART II

was thought best to apply the combined price index for the corresponding major commodity class. These commodity-class price indexes were derived by dividing the combined value, in current prices, of all the minor commodity groups for which specific price indexes were available, by their combined value in 1929 prices. The resulting four indexes are given in Table II-7, which shows also the results of their application in the adjustment of values for the few minor commodity groups for which no specific price indexes could be presented in Table II-6. The adjustment is obviously crude, and not much reliance should be placed upon its results.

Finally, we should note the adjustment for price changes in the value of servicing and re-

pairs rendered by manufacturing establishments. For values of consumers' durable servicing, the bulk of which is rendered in connection with passenger cars, the price index that was applied in the adjustment of the dollar volume of passenger cars and auto parts was used. To adjust the value of production of railroad repair shops a special price index, obtained from Interstate Commerce Commission data, was used (Table II-6). For the other values in the producers' durable class the general price index for the major class of producers' durable commodities was used. The adjusted values of servicing and repairs, i.e., the values in 1929 prices, are given in Table II-7, together with the adjusted values of finished commodities.

Table II—1

ANNUAL OUTPUT OF NON-MANUFACTURED COMMODITIES THAT GO IN PART TO ULTIMATE CONSUMERS,
1919-1933

This table, in five parts, each devoted to a separate group of products, provides estimates, at prices charged by producers, of the value of finished farm products, fish and coal that go to ultimate consumers.

Comments on the table will be found in the Preface to Part II, Section 1.

Table II-1

NON-MANUFACTURED COMMODITIES, PARTLY FINISHED

a Value of Unfinished and Finished Fruits and Vegetables at Farm Prices

(millions of dollars)

	1919	1920	1921	1922	1923	1924	1925	1926	1927	1928	1929	1930	1931	1932	1933
1 Cash income received by farmers for fruits and vegetables ¹	1,747	1,705	1,379	1,410	1,526	1,333	1,686	1,585	1,500	1,293	1,338	1,225	883	646	695
2 Gross income from fruits and vegetables, crop year ²	1,769 ³	1,726	1,542	1,394	1,468	1,450	1,510	1,636	1,542	1,468					
3 Line 2 on a calendar year base															
4 Percentage that line 1 is of line 3	83.62	(average of 1924, 1925 and 1926)				83.01	84.11	85.74	87.03	88.08					
5 Estimated cash income received for fruits and vegetables	1,479	1,443	1,289	1,166	1,228	1,187	1,270	1,370	1,342	1,293	1,338	1,225	883	646	695
6 Cost of materials in canning and preserving industry	359		238		299		386		355		462		322		268
7 Index of line 6, 1929 = 100	77.7		51.5		64.7		83.5		76.8		100.0		69.7		58.0
8 Fruits, vegetables and nuts used in mfg. ⁴															
9 Line 7 x line 8	240		159		200		258		237		309		215		179
10 Ratio of line 9 to line 5	.1623	.1428	.1234	.1432	.1629	.1830	.2031	.1898	.1766	.2038	.2309	.2372	.2435	.2506	.2576
11 Estimated value of fruits and vegetables used in mfg., line 5 x line 10	240	206	159	167	200	217	258	260	237	264	309	291	215	162	179
12 Estimated value of fruits and vegetables destined for sale to domestic consumers, line 5 - line 11	1,239	1,238	1,130	999	1,028	970	1,012	1,110	1,105	1,029	1,029	934	668	484	516

b Value of Unfinished and Finished Dairy and Poultry Products at Farm Prices

(millions of dollars)

	1919	1920	1921	1922	1923	1924	1925	1926	1927	1928	1929	1930	1931	1932	1933
1 Cash income received for dairy products ¹						1,475	1,557	1,598	1,685	1,797	1,844	1,631	1,300	991	984
2 Cash income received for poultry and eggs ¹						662	753	822	753	848	886	756	577	426	410
3 Total, line 1 + line 2						2,137	2,310	2,420	2,438	2,645	2,730	2,387	1,877	1,417	1,394
4 Gross income from dairy and poultry products, crop year ²	3,598	3,502	2,877	2,957	3,315	3,258	3,589	3,775	3,630	3,840	3,840	2,387	1,877	1,417	1,394
5 Line 4 on a calendar year base	3,646	3,550	3,190	2,917	3,136	3,286	3,424	3,682	3,702	3,755	3,755	2,387	1,877	1,417	1,394

Table II-1 (Continued)

	1919	1920	1921	1922	1923	1924	1925	1926	1927	1928	1929	1930	1931	1932	1933
6 Percentage that line 3 is of line 4	66.07	(average of 1924, 1925 and 1926)				65.03	67.46	65.73	65.86	70.82					
7 Estimated cash income received for dairy and poultry products	2,409	2,545	2,108	1,927	2,072	2,137	2,310	2,420	2,438	2,645	2,730	2,387	1,877	1,417	1,394
8 Estimated cash income received for dairy products ⁶	1,626	1,583	1,423	1,301	1,399	1,475	1,557	1,598	1,685	1,797	1,844	1,631	1,300	991	984
9 Estimated cash income received for poultry and eggs ⁶	783	762	685	626	673	662	753	822	753	848	886	756	577	426	410
10 Cost of materials in butter, cheese, and condensed and evaporated milk industries ⁴	1,066		738		955		974		1,058		1,066		680		458
11 Milk and cream used in mfg.											1,911				
12 Ratio of line 11 to line 10	911		631		816		832		904		.8546		581		391
13 Line 10 x line 12	.5603	.5018	.4434	.5134	.5834	.5589	.5844	.5354	.5365	.5152	.4940	.4704	.4469	.4222	.3974
14 Ratio of line 13 to line 8 ⁵															
15 Estimated value of dairy products used in mfg., line 8 x line 14	911	794	631	668	816	824	832	856	904	926	911	767	680	418	458
16 Estimated value of dairy products destined for sale to domestic consumers, line 8 - line 15	715	789	792	633	583	651	725	742	781	871	933	864	620	573	526
17 Value of eggs used in mfg. ⁴											67				
18 Ratio of line 17 to line 9											.0756				
19 Estimated value of eggs used in mfg., line 9 x line 18	59	58	52	47	51	50	57	62	57	64	67	57	44	32	31
20 Estimated value of poultry and eggs destined for sale to domestic consumers, line 9 - line 19	724	704	633	579	622	612	696	760	696	784	819	699	533	394	379

¹ Estimates of Cash Income from Farm Marketings, Monthly, 1924-34 (March 1934, U.S. Department of Agriculture, Bureau of Agricultural Economics. The 1933 data have since been revised.

² Yearbook of Agriculture, 1930, p. 992, Table 526.

³ Based on crop year relationship between 1919 and 1920.

⁴ Materials Used in Manufactures, 1929, Table 23, p. 45.

⁵ For the intercensal years arithmetic averages of the adjoining Census years were used.

⁶ The years prior to 1924 are based on the average proportions for 1924 to 1926, 67.5% and 32.5% respectively.

Table II-1 (Continued)
 c Value of Finished and Unfinished Products of Fisheries at Producers' Prices
 (thousands of dollars)

	1919	1920	1921	1922	1923	1924	1925	1926	1927	1928	1929	1930	1931	1932	1933
1 Total domestic production ¹ (excl. Alaska)											105,970	96,593	67,301	47,702	
2 Value of fish landed at 3 eastern ports ²	7,548	8,227	5,723	5,466	7,051	6,993	8,116	9,058	9,404	10,849	13,052	12,786	9,249	6,084	6,851
3 Value of fish landed at Seattle ³			2,202	2,215	2,630	2,719	2,956	3,599	3,621	3,147	4,029	3,462	2,308	1,798	2,443
4 Line 2 + line 3			7,925	7,681	9,681	9,712	11,072	12,657	13,025	13,996	17,081	16,248	11,557	7,882	9,294
5 Ratio of line 1 to line 4			6,004	(average of 1929 - 1932)							6,204	5,945	5,823	6,052	
6 Estimated domestic produc- tion	58,105 ³	63,331 ³	47,582	46,117	58,125	58,311	66,476	75,993	78,202	84,032	105,970	96,593	67,301	47,702	53,903
7 Value of fish consumed in mfg. ⁴											20,006				
8 Cost of materials in canned and preserved fish industry	53,994		22,022		31,052		39,194		42,892		52,240		28,404		25,812
9 Ratio of line 7 to line 8			8,434		11,893		15,011		16,428		20,006		10,879		9,886
10 Line 8 x line 9	20,680		.1773	.1910	.2046	.2152	.2258	.2180	.2101	.1994	.1888	.1752	.1616	.1725	.1834
11 Ratio of line 10 to line 6 ⁵		.2666													
12 Estimated value of fish consumed in mfg.	20,680	16,884	8,434	8,808	11,893	12,549	15,011	16,566	16,428	16,756	20,006	16,923	10,879	8,229	9,886
13 Estimated value of fish destined for sale to domes- tic consumers, line 6 - line 12	37,425	46,447	39,148	37,309	46,232	45,762	51,465	59,427	61,774	67,276	85,964	79,670	56,422	39,473	44,017

¹ Statistical Abstract, 1931, Table 729, and Fishery Industries of the U.S., 1921, p. 117; 1932, p. 165; 1933, p. 25.

² Statistical Abstract, 1924, Tables 607, 608; 1926, Tables 665, 666; 1931, Tables 731, 732; 1933, Tables 649, 650; 1924, Tables 657, 658.

³ Based on average ratio, 1929-32, of line 1 to line 2, 7.698.

⁴ Materials Used in Manufactures, 1929, Table 23.

⁵ For the intercensal years, averages of the adjoining Census years were computed.

d Cost to Domestic Consumers of Bituminous Coal

	(1)	(2)	(3)	(4)	(5)	(6)
	Total consumption (thousands of net tons) ¹	Amount destined for domestic consumers (thousands of net tons)	Retail price per net tons ³ (dollars)	Cost to consumers (2) x (3) (thousands of dollars)	Average sales realization at mine per net ton ¹ (dollars)	Mine value of bituminous coal destined for domestic consumers (2) x (5) (thousands of dollars)
1919	481,658	61,652	8.00	493,216	2.49	153,513
1920	508,595	65,100	11.26	733,026	3.75	244,125
1921	391,849	50,157	10.68	535,677	2.89	144,954
1922	426,915	54,645	10.21	557,925	3.02	165,028
1923	518,993	66,400 ²	10.33	685,912	2.68	177,952

Table II-1 (Continued)

	(1) Total consumption (thousands of net tons) ¹	(2) Amount destined for domestic consumers (thousands of net tons)	(3) Retail price per net ton ³ (dollars)	(4) Cost to consumers (2) x (3) (thousands of dollars)	(5) Average sales realization at mine per net ton ⁴ (dollars)	(6) Mine value of bituminous coal destined for domestic consumers (2) x (5) (thousands of dollars)
1924	484,004	61,953	9.18	568,729	2.20	136,297
1925	499,193	63,897	9.07	579,546	2.04	130,350
1926	532,581	68,170	9.33	636,026	2.06	140,430
1927	499,801	63,975	9.28	593,688	1.99	127,310
1928	498,828	63,850	8.97	572,734	1.86	118,761
1929	519,555	66,503	8.65	588,552	1.78	118,375
1930	454,990	58,239	8.83	514,250	1.70	99,006
1931	371,869	47,599	8.33	396,500	1.54	73,302
1932	306,917	39,285	7.71	302,887	1.31	51,463
1933	321,748	41,184	7.65	315,058	1.34	55,187

e Cost to Domestic Consumers of Anthracite Coal

	(1) Shipments of domestic sizes (thousands of net tons) ⁴	(2) Amount destined for domestic consumers (thousands of net tons)	(3) Average retail price per net ton ⁶ (dollars)	(4) Cost to consumers (2) x (3) (thousands of dollars)	(5) Average sales realization at mine per net ton, ^{4,7} domestic sizes ^{4,7} (dollars)	(6) Mine value of shipments destined for domestic consumers (2) x (5) (thousands of dollars)
1919	55,537	49,539	11.86	587,533	5.37	266,024
1920	54,256	48,396	14.99	725,456	6.46	312,638
1921	58,146	51,866	15.20	788,363	6.60	342,316
1922	32,131	28,661	15.09	432,494	6.94	198,907
1923	58,697	52,344 ⁵	15.41	806,621	7.35	384,728
1924	56,576	50,466	15.35	774,653	7.37	371,934
1925	38,305	34,168	15.25	521,062	7.41	253,185
1926	54,096	48,254	15.47	746,489	7.73	373,003
1927	48,999	43,707	15.15	662,161	7.44	325,180
1928	46,218	41,226	15.02	619,215	7.22	297,652
1929	46,142	41,159	14.99	616,973	7.14	293,875
1930	42,508	37,917	14.92	565,722	7.05	267,315
1931	35,438	31,611	14.76	466,578	6.87	217,168
1932	29,097	25,955	13.82	358,698	6.09	158,066
1933	27,755	24,757	13.07	323,574	5.78	143,095

Table II-1 (Concluded)

- 1 Mineral Resources of the United States, Pt. II, 1930, pp. 616, 647; 1931, pp. 425, 427, and Statistical Appendix to Minerals Yearbook, 1932-33, p. 374; 1934, p. 283.
- 2 Mineral Resources, 1925, Pt. II, p. 478. Although it is known that the proportion of bituminous coal used for household purposes has been gradually increasing, sufficiently accurate data are not available to make possible any allowance for proportionate changes. Consequently, the 1923 percentage was used for all years.
- 3 These prices are annual averages of monthly quotations as reported by the U.S. Bureau of Labor Statistics in its Retail Price bulletins. In those years in which quotations for one month or more were lacking, an average of the available months was used.
- 4 Mineral Resources of the United States, Pt. II, 1926, p. 574; 1928, pp. 571, 572; 1930, pp. 726, 727, 731 and Statistical Appendix to Minerals Yearbook 1934, pp. 342, 345.
- 5 Special estimate made by Bureau of Mines. See Mineral Resources, 1925, Pt. II, pp. 478. All other years estimated by use of the 1923 percentage relationship between columns (2) and (1), 89.2.
- 6 These are average annual prices based on the monthly quotations for stove and chestnut anthracite (weighted equally) as reported by the U.S. Bureau of Labor Statistics in its Retail Price bulletins. In those years in which one month or more was missing, an average of the available months was used.
- 7 These data are not strictly comparable from year to year owing to slight variations in the method of compilation by the Bureau of Mines.

Table II—2

ADJUSTED TOTALS FOR SEVERAL MINOR COMMODITY
GROUPS, REARRANGED FOR INTERPOLATION AND
SUBSEQUENT ANALYSIS, CENSUS YEARS, 1919-1933

For comments upon this table see the Preface to Part II, Section 2.

Table II-2

ADJUSTED TOTALS FOR SEVERAL MINOR COMMODITY GROUPS

(thousands of dollars)

Minor Commodity Group	1919	1921	1923	1925	1927	1929	1931	1933
2 Cigars, cigarettes and tobacco Original total Adjusted total	1,004,020 1,015,535	1,053,327 1,060,436	1,048,006 1,057,691	1,094,736 1,102,096	1,165,428 1,172,674	1,246,929 1,252,466	1,157,621 1,163,001	913,879 917,069
3 Drug, toilet and household preparations Original total Adjusted total	761,216 775,800	624,027 636,137	776,933 794,749	862,908 880,264	942,403 957,536	1,096,556 1,112,272	906,484 918,791	722,575 731,664
6b All other misc, perishable Original total Adjusted total ¹	154,804	74,478	91,626 Distributed among groups 13, 20 and 22.	90,069	96,193	98,718	70,678	56,285
7 Dry goods and notions Original total Adjusted total	993,585 1,093,290	719,500 808,008	1,001,379 1,119,151	926,245 1,052,839	854,273 994,146	831,979 975,266	473,133 558,910	441,834 504,353
8 Personal furnishings Original total Adjusted total ²	136,617	117,218	159,017 Distributed among groups 2, 3, 7, 12, 19.	164,046	175,787	178,691	115,560	83,216
12 Misc. house furnishings Original total Adjusted total	360,590 369,485	305,610 313,772	417,698 429,474	452,221 462,818	445,669 457,305	470,268 482,191	287,870 297,983	243,690 251,389
13 Toys, games and sporting goods Original total Adjusted total	232,503 347,716	146,718 188,597	198,005 253,923	182,754 233,801	198,384 253,191	226,084 284,718	151,247 191,373	101,138 135,541
19 China and household utensils Original total Adjusted total	172,909 174,827	145,596 146,927	212,672 214,640	214,590 216,729	206,089 208,208	245,835 248,063	166,811 168,794	134,818 135,507
20 Portable household electric appliances and other supplies Original total Adjusted total	33,583 71,565	34,072 65,557	52,992 87,235	58,818 96,879	59,882 99,946	68,873 106,985	42,504 72,622	31,589 53,126
22 Musical instruments Original total Adjusted total	256,468 258,077	176,390 177,524	227,993 229,458	184,049 185,010	186,786 188,108	118,571 120,543	51,637 52,071	25,528 25,873

[134]

¹ Distributed as follows: ammunition, fireworks and photographic supplies to 13; dry batteries and filament lamps to 20; phonograph needles to 22.

² Distributed as follows: pipes to 2; bathing caps, druggists' rubber sundries and rubber gloves to 3; handkerchiefs, desk sets, etc., miscellaneous leather goods, pocketbooks, hard-rubber goods, combs and hairpins, cigar lighters, and umbrellas to 7; toothbrushes and toilet brushes to 12; safety razors to 19.

Table II—3

ANNUAL OUTPUT OF FINISHED PRODUCTS BY MINOR
COMMODITY GROUPS, 1919-1933

This table combines the values of finished manufactured commodities and servicing shown for Census years in Tables I—4 and I—6 with the values of finished non-manufactured commodities shown annually in Table II—1. The data used to estimate the output of finished manufactured commodities and servicing in the intercensal years are described in Note A following the table.

Comments on the table will be found in the Preface to Part II, Section 2.

Table II-3

OUTPUT OF FINISHED PRODUCTS
(thousands of dollars)

Minor Commodity Group	1919	1920	1921	1922	1923	1924	1925	1926	1927	1928	1929	1930	1931	1932	1933
Perishable															
1 Food and kindred products	13,805,053	13,963,915	9,616,410	9,494,167	10,265,269	10,692,103	11,560,562	12,043,123	11,764,136	12,149,390	12,636,280	11,306,793	8,743,984	6,756,303	7,065,053
a Manufactured	11,069,628	11,166,468	7,022,262	7,245,858	7,986,037	8,413,341	9,076,097	9,371,696	9,120,362	9,398,114	9,769,316	8,730,123	6,866,542	5,265,830	5,600,036
b Non-manufactured	2,715,425	2,777,447	2,594,148	2,248,309	2,279,232	2,278,762	2,484,465	2,671,427	2,643,774	2,751,276	2,866,964	2,576,670	1,877,422	1,490,473	1,465,017
2 Cigars, cigarettes and tobacco	1,015,535	1,203,880	1,060,436	1,009,148	1,057,691	1,080,737	1,102,096	1,135,127	1,172,674	1,176,945	1,252,466	1,149,822	1,163,001	1,013,720	917,069
3 Drug, toilet and household preparations	775,800	877,441	636,137	708,781	794,749	819,805	880,264	895,062	957,336	1,051,537	1,112,272	1,009,340	918,791	718,623	731,664
4 Magazines, newspapers, stationery and supplies, and misc. paper products	636,139	951,227	650,186	693,645	778,764	792,104	848,973	872,892	894,794	926,506	979,814	918,538	806,717	680,666	645,526
5 Fuel and lighting products	1,150,119	1,687,568	1,253,571	1,316,245	1,363,068	1,346,134	1,446,269	1,820,066	1,474,736	1,645,103	1,730,686	1,481,650	1,084,382	1,080,986	944,256
a Fuel and lighting products, manufactured and petroleum	730,582	1,130,805	766,301	952,310	800,388	837,903	1,062,724	1,306,633	1,022,246	1,228,690	1,318,436	1,115,329	773,912	871,457	745,974
b Coal	419,537	1,556,763	487,270	363,935	562,680	508,231	383,535	513,433	452,490	416,413	412,250	366,321	290,470	209,629	198,282
6 Misc. perishable commodities	64,237	69,452	53,869	56,108	64,189	62,371	69,322	73,677	74,469	84,903	85,174	78,961	68,650	63,468	57,741
a Caskets and coffins	14,311,921	15,419,273	10,189,191	10,665,850	11,481,818	12,006,261	13,039,466	13,655,087	13,241,881	13,866,695	14,517,478	13,002,113	10,597,613	8,613,964	8,698,010
Total Manufactured	3,154,962	3,334,210	3,061,418	2,612,244	2,841,912	2,786,993	2,868,000	3,184,860	3,096,264	3,167,689	3,279,214	2,942,991	2,167,892	1,700,002	1,663,299
Total Non-manufactured	17,446,883	18,753,483	13,270,609	13,278,094	14,323,730	14,793,254	15,907,466	16,839,947	16,338,145	17,034,384	17,796,692	15,945,104	12,765,505	10,313,966	10,361,309
Total Perishable	1,093,290	1,213,891	808,008	898,551	1,119,151	905,897	1,052,839	1,010,932	994,146	952,589	975,266	703,386	558,910	397,968	504,383
Semidurable															
7 Dry goods and notions	1,930,967	2,146,097	1,575,484	1,779,947	1,976,392	1,705,875	1,862,170	1,870,176	1,889,589	1,837,860	1,827,731	1,471,788	1,148,450	865,459	958,284
9 Clothing and furnishings, men's and boys'	1,933,622	2,157,202	1,703,017	1,995,642	2,260,398	1,941,101	2,177,961	2,209,443	2,373,531	2,450,674	2,591,448	2,217,283	1,877,393	1,272,000	1,266,267
10 Clothing, women's, misses' and children's, and furs and dresses, and other	1,257,489	1,371,752	955,964	995,610	1,131,126	1,064,470	1,047,492	1,076,747	1,080,434	1,077,711	1,084,714	862,569	706,916	547,757	598,615
11 Shoes and other	369,485	442,972	313,772	347,788	429,474	408,990	462,818	502,849	457,305	463,178	482,191	402,982	297,983	217,062	251,369
12 Misc. house furnishings	347,716	312,559	188,597	199,114	253,923	227,372	233,801	247,573	253,191	271,256	284,718	238,512	191,373	136,713	135,541
13 Toys, games and sporting goods	589,660	732,425	348,982	362,268	375,822	412,177	598,656	664,910	620,211	594,485	472,361	363,450	294,961	209,806	212,162
14 Tires and tubes	7,522,229	8,376,898	5,893,824	6,578,920	7,546,286	6,665,862	7,435,937	7,582,630	7,668,407	7,647,753	7,718,429	6,259,970	5,076,006	3,646,765	3,926,841
Total Semidurable	527,056	644,200	486,003	523,888	609,408	645,600	654,762	669,611	654,370	656,672	625,380	449,617	347,714	213,452	234,822
Consumers' Durable															
15 Household furniture	145,890	183,349	109,211	135,239	197,145	186,566	200,595	196,376	200,305	159,254	189,638	134,327	108,299	70,935	73,878
16 Stoves, ranges and water heaters	109,822	181,840	88,285	114,703	135,209	146,113	179,714	225,366	214,982	239,711	268,741	223,726	198,068	115,129	152,798
17 Heavy household appliances incl. mechanical refrigerators	325,974	437,312	286,367	367,094	477,211	429,743	468,670	456,335	449,457	480,579	492,027	305,383	282,888	191,427	237,707
18 House furnishings (durable)	174,827	232,123	146,927	147,791	214,640	163,377	216,729	245,977	208,208	250,122	248,063	178,306	168,794	125,614	135,507
19 China and household utensils	71,565	88,339	65,537	63,664	87,235	84,551	96,879	107,362	99,946	101,438	106,985	89,219	72,622	40,480	53,126
20 Portable household electric appliances and other supplies															

	1919	1920	1921	1922	1923	1924	1925	1926	1927	1928	1929	1930	1931	1932	1933
21 Radio apparatus and equipment	15,124	18,084	12,920	28,594	53,422	147,856	178,473	219,341	192,683	317,012	388,476	244,734	164,230	100,006	104,028
22 Musical instruments	256,077	281,721	177,324	200,219	229,458	190,225	185,010	201,640	188,108	159,123	120,543	111,368	52,071	37,532	25,873
23 Jewelry, silverware, clocks and watches	306,307	293,313	211,459	237,947	287,574	269,058	286,338	286,502	286,562	288,116	288,490	207,290	150,395	93,112	100,073
24 Printing and publishing: books	132,699	144,916	128,256	129,261	155,279	150,063	154,991	160,822	178,163	185,941	199,015	180,403	146,438	106,457	95,312
25 Luggage	64,864	72,056	47,051	48,473	63,810	53,245	61,231	61,203	60,750	62,605	64,801	41,063	27,062	16,966	17,594
26 Passenger cars	1,365,577	1,792,635	1,147,410	1,596,346	2,278,231	2,034,034	2,523,804	2,679,418	2,174,719	2,557,230	2,799,737	1,643,172	1,123,556	636,513	757,009
27 Auto-parts and accessories	282,574	313,403	169,470	243,440	355,793	337,247	444,269	440,191	419,814	411,660	407,584	336,067	273,083	211,944	228,247
28 Motorcycles, bicycles and accessories	40,426	41,872	18,060	16,758	27,020	21,508	20,555	20,654	17,323	20,445	18,273	15,043	11,544	6,510	10,161
29 Pleasure-craft	14,195	14,995	9,546	6,291	12,366	14,281	15,285	22,770	18,108	17,698	26,723	25,094	17,072	9,487	4,911
30 Ophthalmic products and surgical and orthopedic appliances	59,459	69,280	47,570	49,667	59,257	49,615	47,581	47,632	50,779	49,719	53,252	49,341	41,180	32,733	39,954
31 Monuments and tombstones	44,150	63,793	46,930	47,619	65,564	66,443	66,785	63,831	61,913	60,970	63,635	54,938	43,550	25,705	20,846
Total Consumers' Durable	3,938,586	4,873,181	3,196,526	3,956,994	5,289,122	4,989,485	5,801,671	6,105,231	5,476,190	6,018,295	6,361,363	4,279,091	3,228,566	2,024,002	2,291,786
Producers' Durable															
32 Industrial machinery and equipment	166,612	154,543	83,851	80,018	114,541	133,169	139,343	144,830	124,702	138,623	154,384	114,985	86,220	46,479	45,590
a Engines and turbines	30,236	37,315	24,758	26,764	33,367	30,873	34,884	36,865	35,172	37,006	43,042	35,664	22,772	12,279	12,694
b Gas machines, gas and water meters	229,634	298,231	94,143	129,673	181,655	122,669	188,496	212,826	189,535	277,257	386,663	227,568	140,767	71,031	76,400
c Machine tools and accessories	62,034	97,483	50,619	45,769	67,459	63,674	92,511	107,956	102,073	105,236	124,830	100,112	65,412	33,498	34,761
d Pumps and pumping equipment	128,582	155,245	123,712	101,129	137,724	108,287	120,187	113,660	112,109	106,383	127,618	78,961	68,854	36,974	63,780
e Textile machinery	109,466	108,228	75,528	81,958	136,812	139,827	146,938	159,361	151,696	157,310	175,790	143,118	86,033	34,831	27,033
f Construction material machinery	81,961	96,384	61,027	89,101	109,430	83,639	91,905	122,030	108,517	115,470	138,359	102,208	39,044	25,892	31,663
g Mining machinery	320,144	353,964	240,620	236,533	307,296	282,486	333,331	348,049	330,146	361,477	396,949	282,568	199,058	113,354	117,444
h Factory machinery	537,751	584,521	341,569	381,240	511,830	436,271	454,112	482,339	462,511	509,161	662,727	545,041	336,414	192,215	208,714
i General and misc. machinery	1,667,450	1,864,894	1,094,027	1,172,185	1,600,114	1,400,715	1,601,707	1,727,916	1,616,461	1,807,923	2,210,362	1,630,225	1,047,574	568,053	618,079
Subtotal, Minor Group 32	446,914	540,796	393,300	402,193	580,129	633,501	643,971	751,871	718,918	872,119	976,832	701,252	480,291	196,993	182,396
33 Electrical appliances, industrial and commercial	668,173	573,076	350,114	237,893	440,202	362,941	455,421	525,484	514,304	560,802	621,195	521,047	226,912	96,096	103,722
34 Farm machinery, tractors and wagons	164,288	175,210	116,198	134,543	183,394	185,043	204,814	207,461	212,763	227,163	233,602	173,287	118,276	79,795	81,121
35 Office and misc. machinery and equipment	1,646	2,748	2,466	2,771	3,777	3,605	4,202	5,732	7,059	7,470	8,821	7,744	5,861	4,090	5,472
a Office and store equipment	44,618	63,562	54,088	50,154	67,997	75,832	89,056	99,630	98,217	113,378	113,137	97,189	70,835	45,316	44,740
b Vending machines	13,852	16,963	12,620	10,909	14,849	14,303	17,888	19,217	20,327	21,692	22,636	21,403	14,307	7,458	5,914
c Signs	1,028	1,418	1,169	1,119	1,566	2,235	3,561	4,718	5,485	5,997	5,481	4,558	3,032	2,014	2,064
d Soda-water apparatus	225,432	259,901	166,541	199,476	271,373	280,878	319,521	336,958	343,851	375,601	393,677	304,181	212,311	139,673	139,311
e Theatrical scenery	102,868	138,555	118,462	140,270	206,399	235,271	242,043	248,481	255,262	252,050	295,967	208,636	155,563	76,810	72,057
Subtotal, Minor Group 35	612,768	625,726	354,616	297,788	444,484	524,643	592,178	644,484	655,494	670,590	739,748	395,818	85,443	41,814	16,952
36 Office and store furniture and fixtures	1,003,070	592,333	208,878	51,815	33,737	36,868	37,417	52,460	39,219	37,931	56,676	61,206	47,631	26,280	13,517
37 Locomotives and railroad cars	379,728	379,668	180,784	246,132	337,871	343,276	427,954	425,052	373,207	410,446	623,135	417,708	273,174	137,539	179,302
38 Ships and boats															
39 Business motor vehicles															

Table II-3 (Concluded)

	1919	1920	1921	1922	1923	1924	1925	1926	1927	1928	1929	1930	1931	1932	1933
40 Aircraft	12,363	9,326	6,289	8,894	11,498	11,177	10,856	17,885	20,291	52,455	61,474	34,833	32,950	19,831	23,133
41 Professional and scientific equipment	83,421	102,032	67,518	71,349	88,341	90,156	103,372	104,731	118,302	123,790	145,223	124,096	73,605	48,247	49,071
42 Carpenters' and mechanics' tools	143,948	154,103	75,321	95,679	125,962	117,202	121,778	121,731	115,513	143,377	136,622	107,559	58,678	33,367	52,465
43 Durable containers	66,752	130,356	53,910	55,971	74,940	74,764	74,701	91,970	89,304	96,739	107,869	96,173	68,966	45,937	81,188
44 Misc. subsidiary durable equipment	228,139	221,199	133,064	167,159	204,842	117,870	203,328	201,037	195,998	180,093	231,985	184,155	115,610	79,502	91,671
Total Producers' Durable	5,641,006	5,611,965	3,222,824	3,146,804	4,682,083	4,319,254	4,634,247	5,070,060	4,756,124	5,183,916	6,230,785	4,776,869	2,878,708	1,509,152	1,622,864
Repairs and Servicing															
Servicing of consumers' durable commodities	42,001	46,501	25,203	32,076	42,516	33,980	37,775	52,035	56,707	55,014	50,362	36,845	30,601	14,698	13,816
Servicing of producers' durable commodities	1,857,091	2,155,061	1,580,812	1,555,377	1,928,244	1,662,434	1,646,257	1,718,933	1,632,598	1,584,792	1,654,169	1,331,937	943,134	648,160	643,807
a Work done in road repair shops	1,342,711	1,661,013	1,249,427	1,262,402	1,494,344	1,323,092	1,321,865	1,337,281	1,262,008	1,207,487	1,243,130	999,998	732,349	521,781	500,446
b All other servicing of producers' durable	514,380	494,068	331,385	292,975	433,900	339,342	324,372	381,652	370,590	377,305	411,039	331,939	210,785	126,379	143,361
Total Repairs and Servicing	1,899,092	2,201,562	1,606,015	1,587,453	1,970,760	1,696,414	1,684,032	1,770,968	1,689,305	1,639,806	1,704,531	1,368,782	973,735	662,858	657,623
Recapitulation															
Perishable	17,446,883	18,753,483	13,270,609	13,278,094	14,323,730	14,793,254	15,907,486	16,839,947	16,338,145	17,034,384	17,796,692	15,945,104	12,765,505	10,313,966	10,361,309
Semidurable	7,522,229	8,376,898	5,693,824	6,578,920	7,546,286	6,665,882	7,435,937	7,562,630	7,688,407	7,847,753	7,718,429	6,259,970	5,076,006	3,646,765	3,926,841
Consumers' Durable, Total	3,980,567	4,919,082	3,221,729	3,989,070	5,331,638	5,023,465	5,839,446	6,157,286	5,532,897	6,073,309	6,411,725	4,315,936	3,259,167	2,038,700	2,305,602
a Output of Commodities	3,938,586	4,873,181	3,196,526	3,956,994	5,289,122	4,989,485	5,801,671	6,105,231	5,476,190	6,018,295	6,361,363	4,279,091	3,228,566	2,024,002	2,291,786
b Repairs and Servicing	42,001	46,501	25,203	32,076	42,516	33,980	37,775	52,035	56,707	55,014	50,362	36,845	30,601	14,698	13,816
Producers' Durable, Total	7,498,097	7,767,046	4,803,036	4,702,161	6,610,327	5,981,688	6,280,504	6,768,993	6,388,722	6,768,708	6,984,954	6,108,826	3,821,842	2,157,312	2,266,671
a Output of Commodities	5,641,006	5,611,965	3,222,824	3,146,804	4,682,083	4,319,254	4,634,247	5,050,060	4,756,124	5,183,916	6,230,785	4,776,869	2,878,708	1,509,152	1,622,864
b Repairs and Servicing	1,857,091	2,155,081	1,580,212	1,555,377	1,928,244	1,662,434	1,646,257	1,718,933	1,632,598	1,584,792	1,654,169	1,331,937	943,134	648,160	643,807
Grand Total	36,447,796	39,817,109	27,189,798	28,548,265	33,811,981	32,464,299	35,463,373	37,348,636	35,928,171	37,524,154	39,811,800	32,629,836	24,922,520	18,156,743	18,860,423
a Output of Commodities	34,548,704	37,615,527	25,563,783	26,960,812	31,841,221	30,767,875	33,779,341	35,577,868	34,238,866	35,884,348	38,107,269	31,261,064	23,948,785	17,493,885	18,202,800
b Repairs and Servicing	1,899,092	2,201,582	1,606,015	1,587,453	1,970,760	1,696,414	1,684,032	1,770,968	1,689,305	1,639,806	1,704,531	1,368,782	973,735	662,858	657,623

OUTPUT OF FINISHED COMMODITIES

Note A to Table II—3

DATA EMPLOYED IN ESTIMATING OUTPUT OF FINISHED MANUFACTURED
COMMODITIES FOR INTERCENSAL YEARS

Four principal sources were utilized in the construction of indexes on which to base the intercensal year estimates, the last two of the four usually being combined into one index or sample:

1. R. C. Epstein and F. M. Clark, *A Source Book for the Study of Industrial Profits* (Department of Commerce, 1932). This volume provides sales figures from 1919 to 1928 for 2,046 manufacturing corporations classified into 74 minor groups.
2. *Statistics of Income*, 1926 to 1933. This annual publication of the Bureau of Internal Revenue provides gross income data for all manufacturing corporations by major and minor industrial groups.
3. *Reports on Productive Industries . . . of the Commonwealth of Pennsylvania*, 1919 to 1933. These annual reports provide a complete annual census of manufactures for the State of Pennsylvania.
4. *Principal Data Relative to Manufactures in Massachusetts*, 1919 to 1933. Another state census available annually.

In addition to these four principal sources special supplementary sources were used whenever available. In the following notes arranged by minor commodity groups the principal sources are designated Epstein, Statistics of Income and Pennsylvania-Massachusetts. Unless other dates are given, reference to Epstein or Pennsylvania-Massachusetts will assume utilization for the intercensal years 1920, 1922, 1924 and 1926, and reference to Statistics of Income, utilization for 1928, 1930 and 1932. All special sources are described in detail both as to origin and dates covered. The notes, however, reveal only the final choice for each commodity group. Before the final choice was made, as many interpolating indexes as could be assembled for each commodity group were carefully compared. That index was then chosen which seemed most closely to approximate the movement of the related commodity group during the census years.

MINOR COMMODITY GROUP	BASIS OF INTERPOLATION FOR INTERCENSAL YEARS
Perishable	
1	Pennsylvania-Massachusetts and Statistics of Income
2	Epstein and Statistics of Income
3	Pennsylvania-Massachusetts and Statistics of Income
4	Massachusetts, all years
5a	Quantity production of gasoline, reported by Bureau of Mines, multiplied by average annual price at Oklahoma refinery, reported by Bureau of Labor Statistics. Used for all years
6a	Pennsylvania-Massachusetts, all years
Semidurable	
7	Pennsylvania-Massachusetts and Statistics of Income
9	Pennsylvania-Massachusetts and Statistics of Income
10	Pennsylvania-Massachusetts and Statistics of Income
11	Pennsylvania-Massachusetts and Statistics of Income
12	Pennsylvania-Massachusetts, all years
13	Pennsylvania-Massachusetts, all years
14	Epstein, 1920. For other years, shipments of all tires and tire sundries as reported by the Rubber Manufacturers' Association
Consumers' Durable	
15	Pennsylvania-Massachusetts and Statistics of Income
16	Pennsylvania-Massachusetts and Statistics of Income
17	Retail sales of refrigerators, washing machines, and

MINOR COMMODITY GROUP	BASIS OF INTERPOLATION FOR INTERCENSAL YEARS
	vacuum cleaners reported in the annual statistical issues of <i>Electrical Merchandising</i> . Used for all years
18	Pennsylvania-Massachusetts and Statistics of Income
19	Pennsylvania only, all years
20	Epstein, 1920 and 1922. New orders for electrical goods reported in the <i>Survey of Current Business</i> , other years
21	Pennsylvania-Massachusetts sample for musical instruments, 1920 and 1922; for all other years retail sales data reported in the annual statistical issues of <i>Radio Retailing</i>
22	Epstein and Pennsylvania-Massachusetts for 1928, 1930 and 1932
23	Pennsylvania-Massachusetts and Statistics of Income
24	Epstein and Statistics of Income
25	Pennsylvania-Massachusetts, all years
26	Passenger car production reported in <i>Facts and Figures of the Automobile Industry</i> , the annual statistical compendium of the National Automobile Manufacturers' Association, all years
27	Passenger car production, 1920, 1922 and 1924. Average of three indexes, shipments of automobile accessories to wholesalers, shipments of replacement parts and shipments of service equipment, weighted equally as of January 1925 (reported in <i>Survey of Current Business</i>), 1926, 1928, 1930 and 1932
28	Annual number of motorcycles produced compiled by the Department of Commerce, multiplied by the average export price reported annually in <i>Foreign Commerce and Navigation</i> , all years
29	Pennsylvania-Massachusetts, all years
30	Pennsylvania-Massachusetts, all years
31	Monumental stone sold or used by producers as reported by the Bureau of Mines, all years

Producers' Durable	
32a	Epstein and Statistics of Income
b	Epstein and Statistics of Income
c	Indexes of new orders for and shipments of machine tools as reported in the <i>Survey of Current Business</i> , all years
d	Shipments of steam, power and centrifugal pumps reported in the <i>Survey of Current Business</i> , all years
e	Massachusetts, all years
g	Epstein and Statistics of Income
h	Epstein and Statistics of Income
i	Epstein and Statistics of Income
33	Epstein and Statistics of Income
34	Annual production of farm equipment reported by the Bureau of the Census, all years except 1932; Statistics of Income, 1932
35a	Epstein and Statistics of Income
b	Epstein and Statistics of Income
c	Massachusetts, all years
d	Pennsylvania, all years
e	Same as 35c
36	Pennsylvania, all years
37	Pennsylvania, 1920 and 1922; expenditures on equipment by Class I Railways as reported by the Bureau of Railway Economics, all remaining years

PART II

MINOR COMMODITY GROUP	BASIS OF INTERPOLATION FOR INTERCENSAL YEARS	MINOR COMMODITY GROUP	BASIS OF INTERPOLATION FOR INTERCENSAL YEARS
38	Pennsylvania-Massachusetts, all years	Servicing	
39	Motor truck production reported in <i>Facts and Figures of the Automobile Industry</i> , all years	Consumers' Durable	Output of passenger cars and auto parts and accessories shown in Table II—3, all years
40	For 1920, 1922 and 1924, straight line interpolation between Census years; for other years annual production of airplanes and parts reported in <i>Air Commerce Bulletin</i> , April 1935	Producers' Durable	
41	Pennsylvania-Massachusetts, all years	a Work done in railroad repair shops	Cost of maintaining equipment of Class I Steam Railways reported annually in <i>Statistics of Railways</i> , all years
42	Pennsylvania-Massachusetts, all years	b Other repairs and servicing	Output of industrial machinery, locomotives and railroad cars, and ships and boats shown in Table II—3, all years
43	Pennsylvania, all years		
44	Pennsylvania-Massachusetts, all years		

Table II—4

IMPORTS AND EXPORTS OF FINISHED COMMODITIES AND
PERCENTAGE OF NET BALANCE TO TOTAL OUTPUT,
MINOR COMMODITY GROUPS, 1929

The list of specific commodities included under each Minor Group is given in Table III—2. The values of exports in Table II—4 are at producers' prices, excluding the wholesalers' gross margins possibly included in the export values as reported. For discussion see the Preface to Part II, Section 3.

Table II-4

IMPORTS AND EXPORTS OF FINISHED COMMODITIES, 1929
(thousands of dollars)

(1) Minor Commodity Group	(2) Total Output	(3) Imports	(4) Exports	(5) Net Balance (3) - (4)	(6) Percentage of Net Balance to Total Output (5) ÷ (2)
Perishable					
1 Food and kindred products	12,636,280	237,543	481,838	-244,295	1.9
2 Cigars, cigarettes and tobacco	1,252,465	8,956	17,779	-8,823	0.7
3 Drug, toilet and household preparations	1,112,272	16,482	52,886	-36,404	3.3
4 Magazines, newspapers, stationery and supplies, and misc. paper products	979,814	5,257	28,659	-23,402	2.4
5a Fuel and lighting products, manufactured and petroleum products	1,318,436	5,926	82,720	-76,794	5.8
5b Coal	412,250				
6a Misc. perishable: caskets and coffins	85,174	none	no correction necessary ¹	-	-
Semidurable					
7 Dry goods and notions	975,266	66,055	96,024	-29,969	3.1
9 Clothing and furnishings, men's and boys'	1,827,731	20,261	22,104	-1,843	0.1
10a Clothing, women's, misses' and children's	2,431,027	69,230	12,677	56,553	2.3
10b Furs and fur goods	160,421	952	710	242	0.2
11 Shoes and other footwear	1,084,714	18,467	21,259	-2,792	0.3
12 Miscellaneous house furnishings	482,191	26,263	6,584	19,679	4.1
13 Toys, games and sporting goods	284,718	22,789	27,771	-4,982	1.7
14 Tires and tubes	472,361	110	34,650	-34,540	7.3
Consumers' Durable					
15 Household furniture	625,380	7,430	6,586	844	0.1
16 Stoves, ranges and water heaters	189,638	none	4,601	-4,601	2.4
17a Washing machines, sewing machines, etc.	142,828	359	8,046	-7,687	5.4
17b Domestic refrigerators, mechanical	123,913	none	7,459	-7,459	5.9
18 House furnishings (durable)	492,027	45,075	3,558	41,517	8.4
19 China and household utensils	248,063	34,472	4,127	30,345	12.2
20 Portable household electric appliances and other supplies	106,985	1,624	8,998	-7,374	6.9
21 Radio apparatus and equipment	388,476	176	22,648	-22,472	5.8
22 Musical instruments	120,543	5,802	12,621	-6,819	5.7
23 Jewelry, silverware, clocks and watches	288,490	120,182	5,973	114,209	39.6
24 Printing and publishing: books	199,015	2,336	9,071	-6,735	3.4
25 Luggage	64,801	6,126	645	5,481	8.5
26 Passenger cars	2,799,537	1,505	234,292	-232,787	8.3
27 Auto-parts and accessories	407,584	57	no correction necessary ²	-3,680	20.1
28 Motorcycles, bicycles and accessories	18,273	303	3,737	-3,434	1.8
29 Pleasure-craft	26,723		788	-485	
30 Ophthalmic products and surgical and orthopedic appliances	53,252	233	1,371	-1,138	2.1
31 Monuments and tombstones	63,635	none	none	-	-

Table II-4 (Concluded)

(1)	(2)	(3)	(4)	(5)	(6)
Minor Commodity Group	Total Output	Imports	Exports	Net Balance (3) - (4)	Percentage of Net Balance to Total Output (5) ÷ (2)
Producers' Durable					
32 Industrial machinery and equipment	2,210,362	28,849	222,057	-193,208	8.7
33 Electrical appliances, industrial and commercial	976,832	1,579	41,814	-40,235	4.1
34a,c Farm machinery and wagons	424,198	9,989	60,952	-50,963	12.0
34b Tractors	196,997	none	49,646	-49,646	25.2
35a Office and store equipment	233,602	159	46,722	-46,563	19.9
35b Vending machines	8,821	none	248	-248	2.8
35c Signs	113,137	none	none	-	-
35d Soda-water apparatus	22,636	none	464	-464	2.0
35e Theatrical scenery	5,481	none	none	-	-
36 Office and store furniture and fixtures	295,967	none	7,306	-7,306	2.5
37 Locomotives and railroad cars	379,748	none	23,672	-23,672	6.2
38 Ships and boats	56,676	none	none	-	-
39 Business motor vehicles	623,135	none	112,306	-112,306	18.0
40 Aircraft	61,474	1,815	7,301	-5,486	8.9
41 Professional and scientific equipment	145,223	6,657	10,050	-3,393	2.3
42 Carpenters' and mechanics' tools	136,622	1,701	13,746	-12,045	8.8
43 Durable containers	107,889	2,470	none	2,470	2.3
44 Misc. subsidiary durable equipment	231,985	3,692	6,638	-2,946	1.3

¹ See Table II-1, d and e.

² See Table I-3, Note C.

Table II—5

ANNUAL VALUE OF FINISHED COMMODITIES DESTINED
FOR DOMESTIC CONSUMPTION, MINOR COMMODITY
GROUPS, 1919-1933

The values in this table are the same as in Table II—3 except for the adjustments for exports and imports. Unless otherwise noted, the adjustments for imports and exports are based on the percentage of net balance to total output established for 1929 in Table II—4.

Table II-5
 VALUE OF FINISHED COMMODITIES DESTINED FOR DOMESTIC CONSUMPTION
 (thousands of dollars)

Minor Commodity Group	1919	1920	1921	1922	1923	1924	1925	1926	1927	1928	1929	1930	1931	1932	1933
Perishable															
1 Food and kindred products	12,214,524	13,173,282	9,182,202	9,132,838	9,913,611	10,363,038	11,251,870	11,790,523	11,536,908	11,926,334	12,391,985	11,143,296	8,643,342	6,718,792	7,043,145
2 Cigars, cigarettes and tobacco	1,008,426	1,195,453	1,053,013	1,002,084	1,050,287	1,073,172	1,094,381	1,127,181	1,164,465	1,168,706	1,243,643	1,141,773	1,154,860	1,006,624	910,650
3 Drugs, toilet and household preparations	750,431	848,749	615,335	685,604	768,761	792,997	851,479	865,793	926,031	1,017,152	1,075,868	976,335	888,747	695,317	707,739
4 Magazines, newspapers, stationery and supplies, and misc. paper products	620,935	928,493	634,647	677,087	760,152	773,173	828,683	852,030	873,408	904,363	956,412	896,585	787,436	664,398	630,098
5 Fuel and lighting products	1,107,599	1,621,755	1,208,972	1,260,821	1,316,485	1,297,368	1,384,418	1,744,020	1,415,241	1,573,593	1,653,892	1,416,738	1,019,340	1,030,267	900,840
a. Fuel and lighting products, mfd. and petroleum	688,062	1,064,992	721,702	896,886	753,805	789,137	1,000,883	1,230,587	962,751	1,157,180	1,241,642	1,050,417	728,870	820,738	702,558
b. Coal	419,537	556,763	487,270	363,935	562,680	508,231	363,535	513,433	452,490	416,413	412,250	366,321	290,470	209,569	198,282
6a. Misc.: caskets and coffins	64,237	69,452	53,869	56,108	64,189	62,371	69,322	73,677	74,469	84,903	85,174	78,961	68,650	63,468	57,741
• Total Perishable	15,766,152	17,837,194	12,748,038	12,814,522	13,873,485	14,362,119	15,480,153	16,453,224	15,990,522	16,675,051	17,406,974	15,653,688	12,562,375	10,178,866	10,250,213
Semidurable															
7 Dry goods and notions	1,059,726	1,176,625	783,202	870,965	1,064,793	878,086	1,020,517	979,896	963,626	923,345	945,297	681,792	541,751	385,750	488,898
9 Clothing and furnishings, men's and boys'	1,829,036	2,143,951	1,573,909	1,778,167	1,974,416	1,704,169	1,860,308	1,868,306	1,887,699	1,836,022	1,825,888	1,470,316	1,147,302	864,594	957,326
10 Clothing, women's, misses' and children's, and furs and fur goods	1,975,968	2,204,445	1,740,313	2,039,347	2,308,901	1,983,611	2,225,658	2,257,830	2,425,511	2,504,344	2,648,243	2,265,841	1,918,508	1,299,857	1,293,998
11 Shoes and other footwear	1,254,220	1,368,185	953,478	993,021	1,128,185	1,061,702	1,044,769	1,073,947	1,077,625	1,074,909	1,081,922	860,326	705,078	546,333	597,258
12 Misc. house furnishings	384,560	461,045	326,574	361,978	446,997	425,667	481,701	523,365	475,963	482,076	501,870	419,424	310,141	225,918	261,646
13 Toys, games and sporting goods	341,631	307,089	185,297	195,630	249,479	223,393	229,709	243,240	248,760	266,509	279,736	234,338	188,024	134,321	133,169
14 Tires and tubes	546,556	678,885	323,471	335,786	348,349	382,047	555,080	616,305	574,874	551,023	437,921	336,882	273,418	194,469	196,653
Total Semi-durable	7,491,697	8,340,225	5,886,244	6,574,894	7,542,120	6,658,685	7,417,742	7,562,869	7,654,059	7,638,233	7,720,777	6,268,919	5,084,222	3,651,242	3,928,948
Consumers' Durable															
15 Household furniture	527,741	645,037	486,635	524,569	610,200	646,439	655,613	670,491	655,221	657,526	626,224	450,202	348,166	213,729	235,127
16 Stoves, ranges and water heaters	142,345	178,894	106,557	131,953	192,354	182,032	195,721	191,604	195,438	155,384	185,037	131,063	105,667	69,211	72,083
17 Heavy household appliances incl. mechanical refrigerators	103,628	171,584	83,306	108,234	127,583	137,872	169,578	212,655	202,857	226,191	253,595	211,108	166,897	108,656	144,124
18 House furnishings (durable)	353,496	474,221	310,536	398,077	517,488	466,013	508,226	494,850	487,391	521,140	533,544	331,157	306,764	207,583	257,769
19 China and household utensils	196,208	260,512	164,896	165,566	240,890	183,358	243,235	276,060	233,672	280,712	278,408	200,113	169,438	140,977	152,080
20 Portable household electric appliances and other supplies	66,634	82,252	61,022	59,278	81,225	78,725	90,204	99,965	93,060	94,449	99,611	83,072	67,618	37,691	49,466

	1919	1920	1921	1922	1923	1924	1925	1926	1927	1928	1929	1930	1931	1932	1933
21 Radio apparatus and equipment	14,250	16,992	12,173	26,941	50,334	139,291	168,157	206,663	181,546	298,689	366,004	230,588	154,758	94,226	98,015
22 Musical instruments	243,470	265,776	167,476	188,887	216,471	179,456	174,558	190,416	177,461	150,117	115,724	105,065	49,124	36,406	24,409
23 Jewelry, silverware, clocks and watches	427,632	583,229	263,063	327,026	388,063	363,900	384,315	398,868	387,643	396,273	402,699	263,766	178,794	108,554	116,014
24 Printing and publishing	128,214	140,018	121,989	124,892	130,707	144,991	149,752	155,366	172,141	179,656	192,280	174,305	141,488	102,859	92,090
25 Luggage	70,351	78,152	51,032	52,574	69,208	57,750	66,411	66,381	65,869	67,901	70,282	44,537	29,351	18,401	19,082
26 Passenger cars	1,292,559	1,628,275	1,115,450	1,546,095	2,188,767	1,922,517	2,340,180	2,504,326	1,967,840	2,294,954	2,566,950	1,538,016	1,074,111	603,235	725,288
27 Auto-parts and accessories	282,574	313,403	169,470	243,440	355,793	337,247	444,269	440,191	419,814	411,660	407,594	326,067	273,083	211,944	228,247
28 Motorcycles, bicycles, and accessories	33,109	30,390	14,322	12,500	21,665	17,241	15,401	15,638	13,016	16,001	14,593	12,492	10,151	5,961	9,572
29 Pleasure-craft	13,938	14,724	9,373	6,177	12,142	14,003	15,008	22,358	17,780	17,378	26,238	24,640	16,763	9,315	4,822
30 Ophthalmic products, and surgical and orthopedic appliances	58,187	67,797	46,552	48,604	58,478	48,553	46,563	46,613	49,692	48,655	52,114	48,285	40,299	32,053	39,099
31 Monuments and tombstones	44,150	63,793	46,930	47,619	65,564	66,443	66,785	63,831	61,913	60,970	63,635	54,938	43,550	25,705	20,846
Total Consumers' Durable	3,998,676	4,815,049	3,230,802	4,012,732	5,326,932	4,985,833	5,733,956	6,056,286	5,382,374	5,877,636	6,252,522	4,229,414	3,215,992	2,025,448	2,288,133
Producers' Durable															
32 Industrial machinery and equipment	1,468,071	1,651,788	922,822	1,085,240	1,510,912	1,303,761	1,486,386	1,606,767	1,476,027	1,644,055	2,017,154	1,457,840	938,238	525,764	577,057
33 Electrical appliances, commercial, industrial and farm machinery, tractors and wagons	428,501	518,515	377,096	385,623	556,228	607,401	617,439	720,894	689,299	836,188	936,597	672,360	460,503	188,877	174,881
34 Office and miscellaneous machinery and equipment	604,515	496,443	312,373	214,744	399,745	334,492	395,942	462,706	449,024	475,681	520,586	444,666	187,560	89,587	95,550
a Office and store equipment	141,239	141,290	99,231	118,972	164,000	161,652	174,826	175,709	174,385	185,116	187,059	136,816	96,792	67,180	67,699
b Vending machines	1,600	2,671	2,397	2,693	3,671	3,504	4,084	5,571	6,861	7,260	8,573	7,528	5,696	3,975	5,318
c Signs	44,618	63,562	54,088	50,134	67,987	75,632	88,056	99,850	98,217	113,379	113,137	97,189	70,835	45,316	44,740
d Soda-water apparatus	13,568	16,615	12,361	10,685	14,349	14,010	17,521	18,823	19,910	21,247	22,172	20,964	14,014	7,305	5,793
e Theatrical scenery	1,028	1,418	1,169	1,119	1,566	2,295	3,561	4,718	5,485	5,897	5,481	4,558	3,032	2,014	2,064
Subtotal, Minor Group 35	202,053	225,556	169,246	183,603	251,573	257,093	289,048	304,651	304,658	332,899	336,402	267,053	190,369	125,790	125,614
36 Office and store furniture and fixtures	100,327	135,133	115,536	136,805	201,301	229,460	236,085	242,344	248,957	245,824	288,661	203,483	151,721	74,913	70,277
37 Locomotives and railroad cars	574,593	586,743	332,523	279,236	662,649	501,337	367,745	416,793	333,347	253,732	356,076	361,782	80,120	39,209	15,896
38 Ships and boats	1,003,070	592,333	208,878	51,815	33,737	36,868	37,417	52,460	39,219	37,931	56,676	61,206	47,631	26,290	13,517
39 Business motor vehicles	344,303	332,892	170,448	237,183	321,809	323,445	389,619	377,237	302,334	318,287	510,829	372,973	246,994	125,527	159,038
40 Aircraft	9,957	8,679	6,097	8,780	11,490	10,868	10,849	17,591	19,367	51,070	55,968	28,807	30,028	14,058	16,472
41 Professional and scientific equipment	81,469	99,644	65,938	69,679	86,274	88,046	100,953	102,280	115,534	120,893	141,630	121,192	71,683	47,118	47,923
42 Carpenters' and mechanics' tools	120,621	128,701	62,126	87,819	115,396	106,413	109,649	110,166	104,201	131,587	124,577	99,794	53,852	31,037	49,139
43 Durable containers	68,281	133,341	55,145	57,253	76,656	76,466	76,412	94,076	91,349	96,954	110,359	93,375	70,545	46,969	83,047
44 Misc. subsidiary equipment	225,242	218,390	131,374	165,036	202,241	175,611	200,746	198,494	193,509	177,806	229,039	181,816	114,142	78,492	90,507
Total Producers' Durable	5,251,003	5,128,158	2,929,562	2,962,796	4,430,011	4,051,261	4,318,170	4,706,449	4,367,025	4,724,907	5,684,774	4,371,347	2,643,576	1,413,651	1,518,918

Table II-5 (Concluded)

	1919	1920	1921	1922	1923	1924	1925	1926	1927	1928	1929	1930	1931	1932	1933
Recapitulation															
Perishable	15,766,182	17,637,194	12,748,038	12,814,522	13,873,485	14,362,119	15,480,143	16,453,224	15,990,522	16,675,051	17,406,974	15,653,688	12,562,375	10,178,866	10,250,213
Semidurable	7,491,697	8,540,225	5,886,244	6,574,894	7,542,120	6,658,685	7,417,742	7,562,889	7,654,058	7,638,233	7,720,777	6,268,919	5,094,222	3,651,242	3,928,948
Consumers' Durable	3,998,676	4,815,059	3,230,802	4,012,732	5,326,932	4,985,833	5,733,956	6,056,286	5,382,374	5,877,636	6,252,522	4,229,414	3,215,992	2,025,448	2,286,133
Producers' Durable	5,231,003	5,128,158	2,929,562	2,962,796	4,430,011	4,051,261	4,318,170	4,706,449	4,367,025	4,724,907	5,684,774	4,371,547	2,643,576	1,413,651	1,518,918
Total, Finished Commodities	32,487,528	36,120,636	24,794,646	26,364,944	31,172,548	30,057,898	32,950,021	34,778,848	33,393,979	34,915,827	37,065,047	30,523,368	23,506,165	17,269,207	17,966,212

¹Corrections for exports were based on the actual values for each year; for imports the 1929 percentage correction was used.

²Corrections for imports were based on the actual values for each year; for exports the 1929 percentage correction was used.

Table II—6

**INDEXES OF WHOLESALE PRICES OF FINISHED PRODUCTS,
BY MINOR COMMODITY GROUPS, 1919–1933**

The indexes are in terms of the prices for 1929 as 100. Their derivation from the price data collected by the United States Bureau of Labor Statistics is described in Note A following this table. Additional comments will be found in the Preface to Part II, Section 4.

Table II-6

INDEXES OF WHOLESALE PRICES, 1929=100

Minor Commodity Group	1919	1920	1921	1922	1923	1924	1925	1926	1927	1928	1929	1930	1931	1932	1933
Perishable															
1 Food and kindred products	129.6	137.5	90.7	87.7	92.8	91.1	100.3	100.1	96.8	101.1	100.0	90.6	74.7	61.1	60.6
2 Cigars, cigarettes and tobacco	111.8	119.4	117.0	116.6	116.6	103.1	101.9	101.9	101.9	100.3	100.0	100.6	98.0	94.2	84.5
3 Drugs, toilet and household preparations	144.1	153.4	120.5	105.9	107.8	107.1	109.3	112.3	107.0	101.1	100.0	96.5	86.8	76.5	73.0
4 Magazines, newspapers, stationery and supplies, and misc. paper products								no data							
5 Fuel and lighting products															
a Fuel and lighting products, mfd. and petroleum products	164.0	224.0	138.9	147.3	128.2	119.5	127.2	132.1	103.0	104.8	100.0	86.0	65.5	70.3	68.3
b Coal				no data				no data							
6a Misc: Caskets and coffins								104.1	103.9	102.2	100.0	96.8	91.1	83.4	88.1
Semidurable															
7 Dry goods and notions	145.2	184.0	100.6	105.8	119.5	117.4	116.7	105.4	102.9	105.7	100.0	88.2	73.0	61.9	76.3
9 Clothing and furnishings, men's and boys'	137.3	179.9	116.4	116.4	122.1	120.6	117.1	110.9	105.9	103.2	100.0	95.9	84.9	70.4	80.0
10 Clothing, women's, misses', and children's, and furs and fur goods	148.6	197.6	124.4	123.8	125.9	118.4	114.6	114.4	105.6	103.5	100.0	89.9	72.4	56.5	64.9
11 Shoes and other footwear	126.7	142.1	104.9	92.3	93.2	92.6	94.5	94.1	96.5	103.4	100.0	96.0	88.1	81.0	84.9
12 Misc. house furnishings	145.8	169.6	105.1	105.2	121.8	127.7	119.0	106.7	100.2	100.7	100.0	90.0	73.2	62.2	76.1
13 Toys, games and sporting goods								no data							
14 Tires and tubes	383.8	426.6	328.3	211.8	200.8	169.8	180.8	183.5	137.4	116.3	100.0	94.1	84.4	75.4	77.2
Consumers' Durable															
15 Household furniture	121.0	174.7	137.0	120.9	123.2	113.8	110.4	105.5	103.0	101.9	100.0	98.9	92.5	78.5	79.0
16 Stoves, ranges and water heaters	84.4	100.7	97.0	94.9	105.4	102.7	100.8	99.4	99.5	95.8	100.0	98.0	91.7	76.1	73.9
17 Heavy household appliances, incl. mechanical refrigerators				no data											
18 House furnishings (durable)	109.8	140.7	115.5	99.0	108.8	104.4	108.7	107.3	113.6	102.4	100.0	93.0	88.9	77.1	76.0
19 China and household utensils	97.2	111.5	111.2	95.1	113.2	113.1	105.9	102.0	103.0	100.8	100.0	98.3	84.1	75.6	79.6
20 Portable household electric appliances and other supplies									100.4	99.1	100.0	99.1	99.7	99.4	100.7
21 Radio apparatus and equipment								no data							
22 Musical instruments								no data							
23 Jewelry, silverware, clocks and watches								no data							
24 Printing and publishing: books								no data							
25 Luggage	142.4	142.4	132.7	126.2	100.5	100.5	99.3	92.7	97.7	102.4	100.0	99.4	87.9	76.4	72.0
26 Passenger cars	128.5	144.9	129.3	105.1	98.0	96.9	95.0	90.2	92.4	96.4	100.0	94.2	89.2	88.9	87.9
27 Auto-parts and accessories								passenger car index used							
28 Motorcycles, bicycles and accessories								passenger car index used							
29 Pleasure-craft								no data							
30 Ophthalmic products, and surgical and orthopedic appliances								no data							
31 Monuments and tombstones								no data							
Producers' Durable															
32 Industrial machinery and equipment	104.9	110.3	104.2	91.4	96.3	97.3	97.3	97.8	98.2	99.1	100.0	92.7	87.7	82.2	82.2
33 Electrical appliances, industrial and commercial	102.4	113.2	106.2	93.0	102.9	100.7	96.9	95.8	97.6	98.9	100.0	92.5	84.1	76.8	76.3
34 Farm machinery, tractors and wagons	120.2	114.7	127.3	98.4	98.6	102.8	101.1	102.0	102.0	101.0	100.0	98.4	95.4	91.6	89.5

TABLE 11-0 (Continued)

Minor Commodity Group	1919	1920	1921	1922	1923	1924	1925	1926	1927	1928	1929	1930	1931	1932	1933
35 Office and misc. machinery and store equipment	115.3	166.4	130.5	115.2	117.4	108.4	no data	no data	100.5	100.4	100.0	99.9	94.2	87.3	80.0
36 Office and store furniture and fixtures	129.2	142.8	99.4	87.3	106.7	97.8	105.2	100.5	98.5	93.3	100.0	99.5	91.3	82.3	81.9
37 Locomotives and railroad cars				no data			92.8	93.7	104.1	96.7	100.0	93.1	86.9	84.5	76.5
38 Ships and boats							no data	113.6							
39 Business motor vehicles							no data	no data							
40 Aircraft							no data	no data							
41 Professional and scientific equipment	116.6	127.7	104.7	92.5	99.6	101.7	101.3	102.0	100.0	100.0	100.0	98.4	94.7	92.8	91.6
42 Carpenters' and mechanics' tools				no data				100.0	100.0	100.0	100.0	98.5	84.8	77.8	77.1
43 Durable containers								no data							
44 Misc. subsidiary durable equipment															
Servicing															
Servicing of producers' durable: work done in railroad repair shops	129.0	142.5	99.5	87.6	106.5	97.8	93.0	93.5	98.4	93.5	100.0	99.5	91.4	82.3	82.3

Note A to Table II—6

DERIVATION OF PRICE INDEXES

Most of the indexes used were derived from the wholesale price data of the U. S. Bureau of Labor Statistics. Marked revision and addition of new series by the Bureau made necessary the splitting of all derived indexes into two overlapping periods, 1919-29 and 1926-33. The later period usually provided more indexes for each particular group, thus yielding samples of more complete coverage. In the construction of the indexes for both periods the following procedure was adopted:

1. The Bureau of Labor Statistics indexes as reported were assigned to the different groups and subgroups of perishable, semidurable, consumers' durable and producers' durable commodities. Naturally many individual indexes could not be utilized since they represented unfinished commodities.
2. The indexes assigned to each group or subgroup were weighted, summated and then divided by the sum of the weights in order to obtain composite weighted indexes. For 1926-33 the weights used were those in Table 7, *Bulletin No. 572*, U. S. Bureau of Labor Statistics. These weights were also used for the earlier period when the commodities treated were identical with those utilized in the later period. When the two sets of commodities were not identical, weights for the earlier period were obtained from *Bulletin 493*, Appendix B, U. S. Bureau of Labor Statistics.
3. Each composite index was then put on a 1929 base. That computed for the earlier period was used for 1919-25 after the level had been adjusted on the basis of a comparison of the two 1926 index numbers. This adjustment was made on the assumption that the index computed for 1926-33 was better since it included more commodities.

The following notes indicate the composition of the indexes utilized for the minor commodity groups; describe indexes used other than those derived from the data of the Bureau of Labor Statistics; and comment upon the coverage of the indexes. Coverage must be measured very roughly since the Bureau of Labor Statistics data are usually prices for certain standard grades of articles, and therefore do not really provide complete coverage. For example, the price index of mirrors, plate glass, beveled, 12 x 24 inches, each, does not necessarily correspond to a price index of all mirrors. In the rough estimates of coverage given below, however, it has been assumed that the presence of an article in a Bureau of Labor Statistics index provides total coverage for that article.

Perishable

- 1 *Foods and kindred products*: The BLS index for foods, was used without alteration. Since it includes several non-manufactured foods as well as a wide variety of manufactured foods and food products, it undoubtedly affords almost complete coverage.
- 2 *Cigars, cigarettes, tobacco*: For 1926-33 the BLS indexes for cigarettes, cigars, plug tobacco, smoking tobacco, snuff and safety matches were utilized. In the earlier years, a much poorer coverage was obtained since only two BLS indexes were available, plug and smoking tobacco.
- 3 *Drugs, toilet and household preparations*: The BLS subgroup index for drugs and pharmaceuticals, together with all available individual indexes for soaps, were weighted and combined. The resultant composite index seems to represent a coverage of from 40 to 50 per cent.

5a *Fuel and lighting products, manufactured and petroleum products*: For 1926-33 the following BLS indexes were utilized: by-product coke, New Jersey; fuel oil, Pennsylvania; gasoline, California, North Texas, Oklahoma and Pennsylvania; kerosene, standard and water white; regular matches; oil, neutral, Gulf

coastal and Pennsylvania. For the earlier period such of the above indexes as were then available were used. The coverage is fairly complete.

5b *Coal*: Quantity figures were multiplied by the 1929 price index. See Table II—1, d and e.

6a *Caskets and coffins*: For 1926-33 the BLS indexes of casket metal and wood covered, were used. No data were available prior to 1926.

Semidurable

7 *Dry goods and notions*: For 1926-33 the BLS subgroup indexes for cotton goods and woolen and worsted goods, together with the separate index for cotton thread, were weighted and combined. During the earlier period the cotton and woolen and worsted group indexes were used after the subtraction of cotton blankets, hosiery and underwear, and of woolen blankets and underwear from the respective groups. The final composite index probably represents a coverage varying from 40 to 50 per cent.

9 *Clothing and furnishings, men's and boys'*: For 1926-33 the BLS subgroup index for clothing, plus the separate indexes for men's cotton and silk hosiery, cotton underwear, woolen underwear, and gloves were utilized, providing an approximate coverage of 85 per cent. In the earlier period the estimated coverage drops to about 15 per cent since only the indexes for hosiery, underwear and gloves were available.

10 *Clothing, women's, misses' and children's, and furs and fur goods*: The BLS indexes for women's cotton and silk hosiery, cotton underwear, and gloves were weighted and combined, giving a coverage of about 15 per cent. The adequacy of the index is roughly corroborated by the BLS retail cost of living index for all clothing.

11 *Shoes and other footwear*: The BLS subgroup index for boots and shoes was used. A coverage of about 90 per cent is indicated.

12 *Miscellaneous house furnishings*: For 1926-33 the BLS indexes for blankets, comforters, table oilcloth, pillowcases, shade sheets, tablecloths and mirrors were weighted and combined. A probable coverage of about 40 per cent was thus secured. Prior to 1926 the indexes for blankets were alone available, reducing the coverage to not much more than 10 per cent.

14 *Tires and tubes*: The BLS subgroup index for tires and tubes was used without change. In the earlier years this index was apparently less representative and indicated levels extraordinarily high as compared with those in later years. Such data as exist on the average value of tires (total production value divided by total quantity produced) do not reveal such violent movements when put in the form of an index, although they do reveal movement in the same direction.

Consumers' Durable

15 *Household furniture*: The BLS subgroup index of furniture was used after the removal of the several types of office furniture. The coverage is almost complete.

16 *Stoves, ranges and water heaters*: The BLS indexes for radiation and for coal, gas and oil stoves were weighted and combined. Prior to 1926 the stove indexes alone were available. The probable coverage ranges from 30 to 70 per cent.

17 *Heavy household appliances*: The BLS indexes for sewing machines, vacuum cleaners, washing machines and electrical

OUTPUT OF FINISHED COMMODITIES

ironers were used for 1926-33. No satisfactory data were available for the earlier period.

18 *House furnishings*: For 1926-33 the BLS indexes for carpets, linoleums, felt-base floor coverings, bed springs and mattresses were weighted and combined. A coverage of about 70 per cent was attained. In the earlier period only the indexes for carpets were available, reducing the estimated coverage to about 40 per cent.

19 *China and household utensils*: The BLS indexes for knives and forks, dinner sets, nappies, pitchers, plates, teacups and saucers, and tumblers were weighted and combined. The coverage approximates 25 per cent; but the resultant index appears somewhat unsatisfactory, especially during the recent depression years.

25 *Luggage*: The BLS indexes for suitcases and traveling bags were weighted and combined.

26 *Passenger cars*: The BLS index for passenger cars was utilized, providing complete coverage.

27 *Auto-parts and accessories*: Lack of more comparable indexes compelled the use of the passenger car index.

28 *Motorcycles, bicycles and accessories*: The passenger car index was again utilized because of the lack of more appropriate indexes.

Producers' Durable

32 *Industrial machinery and equipment*: Lack of more satisfactory data on industrial machinery compelled the use of railroad construction indexes as presented by the Engineering Section of the Bureau of Valuation, Interstate Commerce Commission, in a mimeographed release, January 19, 1934. As an index of industrial machinery, two of the railroad maintenance of road accounts were utilized, roadway machines (no. 37), and shop machinery (no. 44). These were weighted and combined on the basis of the weights used by the Engineering Section in its compilation of a general index.

33 *Electrical machinery*: As for industrial machinery railroad indexes given in the Interstate Commerce Commission release were weighted and combined. The following accounts were used: telephone and telegraph lines (no. 26), power transmission systems (no. 31), power distribution systems (no. 32), power line poles and fixtures (no. 33), underground conduits (no. 34), power plant machinery (no. 45), and power substation apparatus (no. 46).

34 *Farm machinery*: The revised BLS index for farm machinery, as reported in the *Monthly Labor Review*, August 1935, was used.

36 *Office and store furniture and fixtures*: For 1926-33 the BLS indexes for four types of office furniture: armchairs, side; armchairs, swivel; desks, flat top; and desks, typewriter, were weighted and combined. For the earlier period the index computed for household furniture was used.

37 *Locomotives and railroad cars*: The Interstate Commerce Commission railroad maintenance indexes were used (see Group 32 above). Four accounts were weighted and combined: steam locomotives (no. 51), other locomotives (no. 52), freight-train cars (no. 53), and passenger-train cars (no. 54).

39 *Business motor vehicles*: For 1926-33 the BLS index for trucks, weighted average price of $\frac{3}{4}$ to $3\frac{1}{2}$ tons capacity, f.o.b. was utilized. No data were available for the earlier period.

42 *Carpenters' and mechanics' tools*: For 1926-33 the following BLS indexes were weighted and combined: augers, axes, chisels, files, hammers, hatchets, planes, saws and vises. A similar combination was utilized for the earlier period. Coverage is probably fairly complete.

43 *Durable containers*: The BLS index for steel barrels was used, giving an estimated coverage of about 40 per cent. No data were available prior to 1926.

Servicing of producers' durable, work done in railroad repair shops: The Interstate Commerce Commission index for the maintenance of all railway equipment was used.

Table II—7

ANNUAL VALUE OF FINISHED COMMODITIES AND SERV-
ICING DESTINED FOR DOMESTIC CONSUMPTION,
IN 1929 PRICES, MINOR COMMODITY GROUPS,
1919-1933

The values in this table correspond to those in Table II—5 except that they are in terms of 1929 price levels instead of price levels of the current year. This table shows also the derivation of price indexes for those residual parts of the major commodity groups for which no specific price indexes were available.

Table II-7
VALUES DESTINED FOR DOMESTIC CONSUMPTION, IN 1929 PRICES
(thousands of dollars)

Minor Commodity Group	1919	1920	1921	1922	1923	1924	1925	1926	1927	1928	1929	1930	1931	1932	1933
Perishable															
1 Food and kindred products	9,424,787	9,580,576	10,123,707	10,413,726	10,682,770	11,375,453	11,218,215	11,778,744	11,918,293	11,796,572	12,391,985	12,299,444	11,570,739	10,996,366	11,622,351
2 Cigars, cigarettes and tobacco	901,991	1,001,217	900,011	859,420	900,761	1,040,904	1,073,975	1,106,164	1,142,753	1,165,210	1,243,643	1,134,963	1,178,429	1,068,603	1,077,692
3 Drug, toilet and household preparations	520,771	553,291	510,651	647,407	713,136	740,427	779,029	770,964	865,450	1,006,085	1,075,868	1,011,746	1,023,902	908,911	969,505
5 Fuel and lighting products	882,999	936,868	979,186	910,792	1,079,919	1,130,969	1,144,555	1,397,454	1,360,654	1,512,186	1,653,892	1,595,807	1,423,208	1,422,905	1,278,708
a Fuel and lighting products, manufactured and petroleum products	419,550	475,443	519,584	608,884	587,991	660,365	786,858	931,557	934,710	1,104,179	1,241,642	1,221,415	1,112,779	1,167,479	1,028,635
b Coal	463,449	461,425	459,602	301,908	491,928	470,603	357,697	465,877	425,944	408,007	412,250	374,392	310,429	235,426	250,073
6a Miscellaneous: cases and coffins	11,730,548	12,071,952	12,513,555	12,831,345	13,376,586	14,287,753	14,215,774	15,053,306	15,358,824	15,563,128	16,365,388	16,123,531	15,271,635	14,472,906	15,013,796
Total, Above Groups Comparable Total in Current Prices (from Table II-5)	15,080,980	16,839,249	12,059,522	12,081,347	13,049,144	13,526,575	14,582,148	15,601,194	15,117,114	15,770,688	16,450,562	14,757,103	11,774,939	9,514,468	9,620,115
1000 Price Indexes	128.6	139.5	96.4	94.2	97.6	94.7	102.6	103.2	98.4	101.3	100.0	91.5	77.1	65.7	64.1
Final Price Index	128.6	139.5	96.4	94.2	97.6	94.7	102.6	103.2	98.4	101.3	100.0	91.5	77.1	65.7	64.1
Percentage of Comparable Total in Current Prices to Total Perishable (Table II-5)	95.7	94.4	94.6	94.3	94.1	94.2	94.2	94.4	94.5	94.6	94.0	94.3	93.7	93.5	93.9
Total, Residual Minor Groups Adjusted by Final Price Index	532,369	714,948	713,769	777,816	844,010	881,755	874,661	825,610	887,610	892,757	956,412	979,874	1,021,318	980,819	982,992
Total Perishable	12,262,917	12,786,900	13,227,324	13,609,161	14,220,596	15,169,508	15,090,435	15,949,691	16,246,434	16,455,885	17,406,974	17,103,405	16,292,953	15,453,725	15,996,788
Semidurable															
7 Dry goods and notions	729,839	639,470	778,531	823,218	907,777	747,944	874,479	929,693	936,468	873,553	945,297	773,007	742,125	623,183	640,758
9 Clothing and furnishings, men's and boys'	1,404,979	1,191,746	1,352,155	1,527,635	1,617,048	1,413,075	1,588,649	1,684,676	1,782,520	1,779,091	1,625,888	1,533,176	1,351,357	1,288,116	1,196,658
10 Women's clothing, shoes and furs and fur goods	1,329,723	1,115,610	1,398,965	1,647,292	1,834,711	1,675,347	1,942,110	1,973,628	2,296,885	2,419,656	2,648,243	2,520,402	2,649,873	2,300,632	1,993,834
11 Shoes and other footwear	989,913	962,833	908,940	1,075,862	1,210,499	1,146,546	1,105,576	1,141,283	1,116,710	1,039,564	1,081,922	896,173	800,316	674,485	703,484
12 Misc. house furnishings	263,759	271,943	310,727	344,086	366,933	333,341	404,791	480,501	475,013	478,725	501,870	466,027	423,890	363,212	343,819
14 Tires and tubes	142,406	159,139	98,529	158,539	176,481	222,986	307,013	355,861	416,394	473,799	457,821	358,004	323,955	257,916	254,732
Total, Above Groups Total (excl. Group 14)	4,860,619	4,340,641	4,847,847	5,576,632	6,110,509	5,541,251	6,222,618	6,555,642	7,026,000	7,064,388	7,441,041	6,546,789	6,291,316	5,447,544	5,133,285
14} Group	4,718,213	4,181,502	4,749,318	5,418,093	5,937,028	5,316,253	5,915,605	6,219,781	6,607,606	6,590,589	7,003,220	6,188,785	5,967,361	5,169,628	4,878,553
Comparable Total in Current Prices (from Table II-5)	6,603,510	7,354,251	5,377,476	6,043,478	6,944,282	6,053,245	6,632,953	6,703,344	6,830,424	6,820,696	7,003,220	5,697,699	4,622,780	3,322,452	3,599,126

	1919	1920	1921	1922	1923	1924	1925	1926	1927	1928	1929	1930	1931	1932	1933
Price Index															
Percentage of Comparable Total in Current Prices to Total Semidurable (Table II-5)	140.0	175.9	113.2	111.5	117.0	113.9	112.1	107.8	103.4	103.5	100.0	92.1	77.5	64.0	73.8
Residual Minor Group Adjusted by Final Price Index	88.1	88.2	91.4	91.9	92.1	90.9	89.4	88.6	89.2	89.3	90.7	90.9	90.9	91.0	91.6
Total Semidurable	244,022	174,582	163,690	175,453	213,230	196,131	204,914	225,640	240,580	257,497	279,736	254,439	242,612	209,877	180,446
Consumers' Durable	5,104,641	4,515,223	5,011,537	5,752,085	6,323,739	5,737,382	6,427,532	6,781,282	7,266,580	7,321,885	7,720,777	6,801,228	6,533,928	5,657,421	5,313,731
15 Household furniture	436,150	369,226	355,208	433,887	495,292	568,048	593,852	635,527	636,137	645,266	626,224	455,209	376,396	272,286	297,629
16 Stoves, ranges and water heaters	168,655	177,650	109,853	139,044	182,499	177,246	194,168	192,761	196,420	162,196	185,037	133,738	115,231	90,947	97,541
17 Heavy household appliances, incl. mechanical refrigerators	321,936	337,044	268,862	402,098	475,632	446,373	467,549	461,184	473,195	517,004	533,544	336,884	364,761	274,581	323,830
18 House furnishings (durable)	201,860	233,643	148,288	174,412	212,800	162,120	229,684	270,647	232,741	283,261	278,408	201,930	190,008	141,828	151,023
19 China and household utensils	49,404	54,882	38,457	41,659	68,864	57,463	66,878	71,608	67,440	66,310	70,282	44,806	33,391	24,065	26,503
25 Luggage	1,005,882	1,123,723	862,684	1,471,070	2,233,436	1,984,022	2,463,347	2,776,415	2,129,697	2,380,637	2,566,950	1,632,713	1,204,160	678,555	825,129
26 Passenger cars	219,902	216,289	131,087	231,627	363,054	348,036	467,652	488,017	454,344	427,033	407,584	346,143	306,147	238,407	259,667
27 Auto-parts and accessories	25,766	20,973	11,077	11,893	22,107	17,783	16,212	17,337	14,087	16,599	14,593	13,261	11,380	6,705	10,890
28 Motorcycles, bicycles and accessories	2,429,555	2,533,430	1,925,496	2,905,690	4,053,684	3,761,101	4,499,343	4,913,496	4,382,632	4,719,196	4,882,622	3,391,682	2,811,707	1,868,277	2,181,849
Total, Above Groups	2,898,373	3,608,864	2,418,898	3,075,074	4,196,365	3,812,597	4,469,056	4,659,531	4,241,138	4,631,449	4,682,622	3,244,755	2,523,628	1,579,677	1,643,372
Comparable Total in Current Prices (from Table II-5)	119.3	142.5	125.6	105.8	103.5	101.4	99.3	94.8	96.9	98.1	100.0	95.7	89.8	84.6	84.5
Price Indexes	120.2	143.6	126.5	106.6	104.3	102.1	100.0	95.5	96.9	98.1	100.0	95.7	89.8	84.6	84.5
Final Price Index (linked)	72.5	75.0	75.0	76.6	78.9	76.5	77.9	76.9	78.9	78.9	74.9	76.7	78.5	78.0	80.6
Percentage of Comparable Total in Current Prices to Total Consumers' Durable (Table II-5)	901,193	820,277	630,991	862,895	1,063,863	1,126,893	1,236,991	1,239,895	1,178,965	1,270,323	1,316,305	1,028,903	771,006	526,916	526,345
Total Consumers' Durable	3,330,748	3,353,707	2,556,487	3,768,585	5,117,547	4,887,994	5,736,334	6,339,441	5,561,597	5,989,519	6,252,522	4,420,585	3,582,713	2,395,193	2,708,194
Service of consumers durable (passenger car index used for price adjustment)	32,686	32,092	19,492	30,520	43,384	35,067	39,763	57,688	61,371	57,068	50,362	39,114	34,306	16,533	15,718
Total Consumers' Durable (incl. servicing)	3,363,434	3,385,799	2,575,979	3,799,105	5,160,931	4,923,061	5,776,097	6,397,129	5,622,968	6,046,587	6,302,884	4,459,699	3,617,019	2,411,726	2,723,912

Table II-7 (Continued)

	1919	1920	1921	1922	1923	1924	1925	1926	1927	1928	1929	1930	1931	1932	1933
Producers' Durable															
32 Industrial machinery and equipment	1,389,496	1,497,541	885,626	1,187,352	1,568,964	1,339,939	1,527,632	1,642,911	1,503,082	1,658,986	2,017,154	1,572,643	1,069,827	639,616	702,016
33 Electrical appliances, industrial and commercial	418,458	459,052	355,081	414,848	540,552	603,179	637,192	752,499	706,249	845,488	936,597	726,876	547,566	245,934	229,202
34 Farm machinery, tractors and wagons	502,924	432,819	245,383	218,236	405,421	325,381	391,634	453,833	440,220	470,971	520,586	451,896	196,604	97,802	106,760
36 Office and store furniture and fixtures	87,014	81,210	88,533	118,754	171,466	211,679	224,396	241,138	247,718	244,845	288,661	203,687	161,063	85,811	87,846
37 Locomotives and rail-road cars	444,731	410,884	334,530	319,858	621,039	512,615	396,277	444,816	338,423	271,953	356,076	363,600	87,755	47,642	19,409
39 Business motor vehicles															
42 Carpenters' and mechanics' tools	103,449	100,784	59,337	94,939	115,859	104,634	108,439	108,006	104,201	131,587	124,577	101,417	56,866	33,445	53,645
43 Durable containers	2,956,072	2,981,290	1,968,490	2,353,787	3,423,301	3,097,427	3,285,570	3,643,003	3,721,669	4,051,033	4,243,651	3,920,607	2,487,087	1,359,200	1,514,484
Total, Above Groups															
Comparable Totals in Current Prices (from Table II-5)	3,296,628	3,517,323	2,122,476	2,189,467	3,446,231	3,082,864	3,213,426	3,559,670	3,694,538	4,004,308	4,243,651	3,711,273	2,189,523	1,121,903	1,224,855
Price Indexes	111.5	118.0	107.8	93.0	100.7	99.5	97.8	97.7	99.3	98.8	100.0	94.7	88.0	82.5	80.9
Final Price Index (linked)	113.1	119.7	109.3	94.3	102.1	100.9	99.2	99.1	99.3	98.8	100.0	94.7	88.0	82.5	80.9
Percentage of Comparable Total in Current Prices to Total Producers' Durable (Table II-5)	63.2	68.7	72.5	73.9	77.8	76.1	74.4	75.6	84.6	84.8	74.7	84.9	82.8	79.4	80.7
Total, Residual Minor Groups Adjusted by Final Price Index	1,671,037	1,309,241	718,079	787,391	922,750	918,085	1,062,973	681,601	677,227	729,351	819,935	697,016	515,969	353,635	363,452
Total Producers' Durable	4,627,109	4,280,531	2,686,569	3,141,178	4,346,051	4,015,512	4,348,443	4,750,755	4,398,696	4,780,384	5,664,774	4,617,623	3,003,056	1,712,835	1,877,936
Servicing of Producers' Durable a work done in rail-road repair shops (adjusted by I.C.C. index of cost of maintaining equipment, see Table II-6)	1,040,961	1,165,623	1,255,706	1,441,098	1,403,140	1,352,855	1,421,382	1,430,247	1,282,528	1,291,430	1,243,130	1,005,023	801,257	633,999	608,075
All other (adjusted by final index) Durable (incl. servicing)	454,801	412,755	303,188	310,684	424,976	336,315	326,988	385,118	373,202	361,888	411,039	350,516	239,528	153,187	177,208
Total Producers' Durable (incl. servicing)	6,122,771	5,868,909	4,245,463	4,892,960	6,174,167	5,704,682	6,096,813	6,566,120	6,054,626	6,453,702	7,338,943	5,973,162	4,043,841	2,500,021	2,663,219

Table II-7 (Concluded)

	1919	1920	1921	1922	1923	1924	1925	1926	1927	1928	1929	1930	1931	1932	1933
Recapitulation															
Perishable	12,262,917	12,766,900	13,227,324	13,609,161	14,220,596	15,169,508	15,090,435	15,949,691	16,246,434	16,455,885	17,406,974	17,103,405	16,292,953	15,453,725	15,996,788
Semidurable	5,104,641	4,515,223	5,011,537	5,752,085	6,323,759	5,737,382	6,427,532	6,781,282	7,266,580	7,321,885	7,720,777	6,801,228	6,533,928	5,657,421	5,313,731
Consumers' Durable (incl. servicing)	3,353,454	3,385,799	2,575,979	3,799,105	5,160,931	4,923,061	5,776,097	6,397,129	5,622,968	6,046,587	6,502,884	4,459,699	3,617,019	2,411,726	2,723,912
Consumers' Durable Servicing of Pro- ducers' Durable	3,330,748	3,353,707	2,556,487	3,766,585	5,117,547	4,887,994	5,736,334	6,339,441	5,561,597	5,989,519	6,252,522	4,420,585	3,582,713	2,396,193	2,708,194
Servicing of Con- sumers' Durable	32,666	32,092	19,492	30,520	43,394	35,067	39,763	57,688	61,371	57,069	50,362	39,114	34,306	16,533	15,718
Producers' Durable (incl. servicing)	6,122,771	5,868,909	4,245,463	4,892,960	6,174,167	5,704,662	6,096,813	6,566,120	6,054,626	6,453,612	7,538,943	5,973,162	4,043,841	2,500,021	2,663,219
Producers' Durable Servicing of Pro- ducers' Durable	4,627,108	4,290,531	2,686,569	3,141,178	4,346,051	4,015,512	4,348,443	4,750,755	4,398,896	4,780,384	5,684,774	4,617,623	3,003,056	1,712,635	1,877,936
	1,495,662	1,578,378	1,558,894	1,751,782	1,826,116	1,689,170	1,748,370	1,815,365	1,655,730	1,673,318	1,654,169	1,355,539	1,040,785	787,186	785,283
Total Finished Commodities	25,325,415	24,946,361	23,481,917	26,271,009	30,007,933	29,810,596	31,602,744	33,821,169	33,473,507	34,547,673	37,065,047	32,942,841	29,412,650	25,219,174	25,896,649
Total Finished Commodities (incl. servicing)	26,853,763	26,556,831	25,060,303	28,033,311	31,879,433	31,534,633	33,390,877	35,694,222	35,190,608	36,278,059	38,769,578	34,337,494	30,487,741	26,022,893	26,697,650

Minor Group 14 was excluded from the totals used in estimating the major group price index because of the extreme variations in the tire and tube price index.

