

Farming Under Weather Risk: Adaptation, Moral Hazard, and Selection on Moral Hazard

September 16, 2017

Hsing-Hsiang Huang
Oak Ridge Institute for Science and Education
at the U.S. Environmental Protection Agency

Michael R. Moore
University of Michigan

Abstract [long version]: Farmers in the American Midwest decide on agricultural land use (cropping pattern) and crop insurance in springtime after observing pre-plant precipitation. We examine cropping-pattern adaptation to pre-plant precipitation as a natural experiment. In tandem with the weather experiment, we also exploit a quasi-experiment created by a federal program that sharply reduced insurance deductibles to examine both risk-taking in cropping pattern as a moral hazard of insurance and selection of insurance coverage in response to the risk-taking. Using a 2001-2014 panel of high-resolution spatial data on land use and weather, we present evidence of heterogeneous adaptation in cropping pattern across the large agricultural states of Illinois, Iowa, Nebraska, and North Dakota. We also find evidence of heterogeneous risk-taking in cropping pattern during the federal program in 2009-2011, with farmers in Nebraska and North Dakota much more responsive to pre-plant precipitation in both their adaptation and risk-taking than farmers in Illinois and Iowa. Using a 2001-2014 panel of county-level data on crop insurance expenditures, we find limited evidence of selection on moral hazard in insurance expenditures in response to pre-plant precipitation. Farmers in Illinois and Iowa increase (decrease) the rate of insurance expenditures on corn when they increase (decrease) corn acres. They do so to a lesser degree with soybeans. The interaction of adaptation, moral hazard, and selection on moral hazard provides new insight into incentives, hidden actions, and hidden information in major cropland and insurance markets.

* Huang: hsihuang@umich.edu. Moore: micmoore@umich.edu. For valuable comments, we thank Gloria Helfand, Ryan Kellogg, Mike McWilliams, Wolfram Schlenker, and participants at the NBER conference Understanding Productivity Growth in Agriculture, the Association of Environmental and Resource Economists' 2016 Annual Summer Conference, and the 2016 Heartland Environmental and Resource Economics Workshop. Joshua Woodward provided excellent comments as the discussant at the NBER conference. We are grateful to Wolfram Schlenker for generously sharing weather data and to Peter Brody-Moore for outstanding research assistance.

Farming Under Weather Risk: Adaptation, Moral Hazard, and Selection on Moral Hazard

As the climate system continues to warm, episodes of drought and extreme precipitation are more likely to occur in North America (Christensen et al. 2013). Questions about changes in local temperature and precipitation events have been a practical concern to most of society (Brooks, 2013). Agricultural productivity and profitability are of particular importance due to their direct connection to weather (e.g., Deschênes and Greenstone 2007; Fisher et al. 2012; Moore and Lobell 2014). Extreme weather events – including excessive heat, drought, and precipitation – are known to cause harmful impacts on crop yields (Schlenker and Roberts 2009; Lobell et al. 2014; Urban et al. 2015). According to the “smart farmer” hypothesis (Mendelsohn, et al. 1994), however, farmers adapt to weather variation, and can adapt to climate change, to mitigate these impacts. Yet we know little about the mechanism(s) of adaptation: is it through crop choice, deployment of farm labor, or timing of production activities? Another possibility is that farmers manage weather risk through crop insurance. As with all insurance markets, crop insurance raises the prospect of market failure through adverse selection and moral hazard. The limited evidence on crop insurance suggests that, when treated with extreme heat, production areas with higher levels of insurance generated lower crop yields, i.e., insurance may create a moral-hazard incentive for less adaptation (Annan and Schlenker 2015). Once again, the mechanisms underlying this outcome remain unstudied.

In this paper, we study farmers’ crop choice and crop insurance takeup in response to pre-plant precipitation from the perspectives of adaptation, moral hazard, and selection on moral hazard. Crop choices are analyzed as land use, hereafter labelled *cropping pattern*, or how many acres of cropland are allocated to various crops. Cropping pattern is a possible adaptive strategy to pre-plant precipitation as crops vary in their physiological requirements for water (Anderson et al. 2012). At the same time, cropping pattern is potentially susceptible to the moral-hazard incentive of insurance. In addition to deciding on cropping pattern in early spring (Haigh et al. 2015), farmers in the U.S. Midwest make crop insurance decisions by a March 15 deadline for corn and soybeans. Insurance is purchased by crop-specific acreage, and farmers decide on what percentage of yield to insure up to a maximum of 85% of the crop’s historical average yield (where 85% coverage translates into a 15% deductible). Our variable for pre-plant precipitation includes precipitation from October 1 of the previous year through the March 15 insurance deadline. Our identification strategy relies on exogenous variation in this variable, i.e., interannual variation in pre-plant precipitation is plausibly random within a given spatial unit, as with other weather variables (Dell et al. 2014).

In tandem with the weather experiment, we exploit a quasi-experiment created by a federal agricultural policy from 2009 to 2011 – the Supplemental Revenue Assistance Payments (SURE) program – to examine moral hazard in cropping pattern and selection on moral hazard in insurance takeup. The SURE program augmented private crop insurance (at no charge to the farmer) with what was termed a “shallow loss” provision (Glauber 2013), i.e., a provision to insure against relatively small reductions in crop yields that normally are part of the deductible. The provision substantially reduced deductibles on crop insurance, to 10% (Shields 2010; USDA 2009), thereby increasing the

incentive for moral hazard in farmer decision-making (Smith and Watts 2010).¹ From the vantage point of an insurance agent, a farmer's hidden action was not merely planting a particular crop. Rather, it was planting a particular crop under conditions of extreme pre-plant precipitation. By interacting the SURE program and pre-plant precipitation, we estimate the treatment effect of SURE's reduced deductibles on cropping pattern to generate evidence on moral hazard.

Selection on moral hazard is the idea that an individual's selection of insurance coverage is affected by the expected behavioral response to the coverage (Einav et al. 2013). Einav et al. show, for example, that individuals with a greater behavioral response to a health insurance contract purchase greater coverage. The issue in our study is whether farmers who increase (decrease) a crop's acreage under the SURE program purchase higher (lower) insurance coverage on the crop; this is moral hazard followed by selection on moral hazard. Higher coverage, notably, will generate a larger payout for a given crop yield. We investigate insurance takeup in a similar way to cropping pattern. By interacting the program and pre-plant precipitation, we estimate the treatment effect of SURE's reduced deductibles on insurance takeup to generate evidence on selection on moral hazard.

We investigate these topics using data from four large agricultural states in the U.S. Midwest: Illinois, Iowa, Nebraska, and North Dakota. Illinois and Iowa are included in their entirety, while only the rainfed-agricultural regions of North Dakota and Nebraska are included (i.e., irrigated agriculture is excluded as in Schlenker et al. 2005). We apply high-resolution spatial data on land use (crops) and weather.² We apply county-level data on insurance takeup and prepare county-level weather data to match the insurance data. Insurance takeup is measured using farmers' expenditures on insurance premiums, as in Deryugina and Kirwan (2016). The study spans 2001 to 2014. With SURE being a short-lived program from 2009-2011, both the beginning and end of the program are subject to analysis. A key question is: after program termination, does cropping-pattern adaptation to pre-plant precipitation return to its pre-program status? To implement this, we interact pre-plant precipitation with both the policy change in 2009 and its termination after 2011.

We estimate piecewise linear regressions, by state and crop, to allow for heterogeneous effects of pre-plant precipitation across states. Illinois and Iowa are dominated by corn and soybean production, whereas several crops are planted in North Dakota and Nebraska, which suggests that farmers in the latter states may have more options for crop substitution. Previous research has found a strong nonlinearity in the relationship between precipitation during the growing season and crop yields (Schlenker and Roberts 2009; Annan and Schlenker 2015; Burke and Emerick 2015). The piecewise linear approach, following Schlenker and Roberts (2009) and Burke and Emerick (2015), allows us to identify the effects of both a risk of water deficit and a risk of excess water on farmers' cropping pattern and insurance takeup responses to pre-plant precipitation.³ In this setting of exogenous variation in pre-plant precipitation, unobserved characteristics of farms and farmers may

¹ Deductibles are a well-known feature of insurance policy design for reducing moral hazard, i.e., reducing the incentive provided by insurance for risk-taking in relation to an uncertain outcome (Varian 1992).

² With Minnesota and South Dakota included, the study area would encompass a block of six contiguous states. They are not included, however, because their high-resolution cropland data do not begin until 2006.

³ Both drought and excess precipitation are frequent entries in the Causes of Loss database on crop insurance claims, which is maintained by USDA's Risk Management Agency (<http://www.rma.usda.gov/data/cause.html>).

be correlated with both cropping pattern and pre-plant precipitation. For instance, in a semi-arid area that typically experiences low precipitation as part of its climate, farmers may have adjusted in various ways (e.g., with farm machinery or tillage practices) to the higher probability of low precipitation. We control for this time-invariant unobserved heterogeneity with fixed effects. By using fine-scale spatial data, we pair a panel of crop-level land uses with pre-plant precipitation for 2001-2014 at a one-square-mile level, containing 640 acres. These one-square-mile blocks of farmland, called *sections*, tend to have only one or a few owners per section according to the Public Land Survey System (PLSS).⁴ We employ section fixed effects in the land-use regressions, as in Holmes and Lee (2012).⁵ We employ county fixed effects in the insurance takeup regressions.

Our results show heterogeneity across states in cropping-pattern adaptation to pre-plant precipitation in 2001-2007.⁶ Farmers in North Dakota and Nebraska are much more responsive than in Iowa and Illinois. When pre-plant precipitation is too little or too much, they plant fewer acres in corn, which is relatively water-sensitive, and more acres in soybeans, grassland, and/or wheat. In Illinois, although farmers are less responsive, the adaptation effects nevertheless are statistically significant for their three crops (corn, soybean, and grassland). Iowa appears to combine the ideal climatic and soil conditions for growing corn and soybeans such that they are optimal choices under a wide range of pre-plant precipitation conditions.

During the SURE regime in 2009-2011, farmers in all four states changed cropping pattern in response to SURE's reduced deductibles. Farmers in North Dakota and Nebraska planted more acres in corn and fewer acres in wheat, soybeans, and grassland crops when facing extreme pre-plant precipitation. Although less responsive in magnitude, statistically significant effects were also found for corn and soybeans in Illinois and Iowa. Moral hazard under the SURE program provides a clear explanation for this risk taking in cropping pattern. Farmers apparently were substituting crop insurance for adaptation as a means of managing risk.

Notably, after the program's termination in 2012-2014, farmers largely reversed course, returning cropping patterns close to the original, pre-program patterns of 2001-2007.

We find limited evidence of selection on moral hazard in expenditures on crop insurance premiums in response to pre-plant precipitation. In both Iowa and Illinois, the SURE treatment effects for both corn insurance premiums and corn acres have the same sign and (in seven of eight cases) are highly statistically significant. That is, farmers are increasing (decreasing) insurance expenditures on corn when they increase (decrease) corn acres. The results for expenditures on soybean insurance premiums in both Iowa and Illinois are somewhat weaker, as they follow soybeans acres in sign and

⁴ A section contains four quarter sections of 160 acres apiece. The quarter section is the land unit that was distributed for free under the 1862 Homestead Act to individuals who agreed to settle and farm the land. It is the original foundation of private ownership. We do not use quarter section as the analytical unit because it does not cover all parts of North Dakota and Iowa.

⁵ In addition to accounting for unobserved heterogeneity at a fine scale, using the section as the spatial unit of analysis takes advantage of high-resolution weather data, thus avoiding the problem of generating aggregated precipitation variables with relatively small variation. We discuss this further in the Data subsection in Section 3.

⁶ We omit data from 2008 in generating the main results as there is some ambiguity about whether the SURE program was operating prior to the March 15 deadline for crop insurance decisions in 2008.

significance on one side of the precipitation thresholds, but not both sides, in the piecewise linear regressions. Precipitation varies more spatially than does temperature, such that the use of county-level data on pre-plant precipitation in the insurance regressions may explain these few differences across the acreage and insurance results. Insurance regressions are not estimated for Nebraska and North Dakota as the crop insurance data are problematic for those states.⁷

Our paper is related to three strands of literature: adaptation to weather variation and climate change; risk-taking behavior as a moral hazard of insurance; and selection on moral hazard in insurance coverage. A growing literature addresses adaptation to climate change by economic agents in various sectors, e.g., agriculture, energy consumption, and human health.⁸ As in our paper, most of this research uses historical data to estimate the impact of extreme weather as a basis to understand prospective adaptation to future climate change. In the agricultural sector, negative effects on crop yields are caused by extreme heat during the growing season (Schlenker and Roberts 2009), drought (Lobell et al. 2014), and extremely wet planting conditions (Urban et al. 2015). Our study differs in three regards: (i) it examines cropping pattern as a mechanism of adaptation⁹ instead of crop yield as an outcome of adaptation; (ii) it focuses on an intermediate-run production perspective by analyzing the cropping pattern decision, in contrast to the very-short-run (growing season) and short-run (planting-growing season) perspectives of the studies above; and (iii) it uses high-resolution spatial data on land use and weather instead of relying solely on county-level data.

Our paper is also related to the extensive empirical literature on moral hazard in insurance markets (see, e.g., Einav et al. 2010; Finkelstein 2015). In the agricultural sector, Weber et al. (2016) review research related to moral hazard in the crop insurance market. Two studies reach contrary conclusions on the topic. Weber et al. (2016) find no evidence of moral hazard with respect to crop productivity, crop specialization, and input use, while Roberts et al. (2011) find such evidence with respect to crop yield. Deryugina and Kirwan (2016) find that expectations of agricultural disaster aid affect the crop insurance decision, a type of moral hazard. Our study is most similar to Annan and Schlenker (2015), who are the first to connect the two topics of adaptation to weather and moral hazard in insurance. They find that crop insurance gives farmers a disincentive to reduce damage to crop yields from extreme heat. Insurance thus perversely makes farmers less responsive to the weather (moral hazard).

A key feature of our paper is the study of moral hazard's hidden action – for instance, planting corn after experiencing extreme pre-plant precipitation – instead of the outcome of the hidden action.

⁷ Annan and Schlenker (2015) describe these problems with the crop insurance data. We discuss this in more detail in the Data subsection in Section 3.

⁸ Related literature includes: Deschênes and Greenstone (2007); Schlenker and Roberts (2009); Fisher et al. (2012); and Urban et al. (2015) on agriculture; Davis and Gertler (2015) and Mansur et al. (2008) on energy consumption; and Barreca et al. (2016) and Deschênes and Greenstone (2011) on human health.

⁹ Our research is similar to Kala (2014), Khanal et al. (2017), Miller (2014), and Rosenzweig and Udry (2014), all of which study farmer adaptation to expected precipitation during the growing season in the context of developing economies. Our research also relates to recent studies that conduct randomized controlled trials to elicit the effect of rainfall insurance programs on Indian farmers' response to pre-plant weather risk (Cole et al. 2014; Mobarak and Rosenzweig 2014). Our results are consistent with their findings that a risk management program induces farmers to switch to production of riskier crops.

Other research, in contrast, commonly assesses an outcome of the action instead of the action itself. For example, Einav et al. (2013) study the response in health insurance utilization to increased insurance coverage as a form of moral hazard; they do not study individuals' efforts in maintaining their health.¹⁰ Similarly, Annan and Schlenker (2015) examine the effect of crop insurance coverage on crop yield; they do not study farmers' reduction in input use as the mechanism for explaining lower yield.¹¹ In our case, data on pre-plant precipitation are not recorded in an insurance contract. Thus the choice of which crop to grow, conditional on pre-plant precipitation, is not observed by the insurance company. From the vantage point of the analyst, our unique dataset translates this choice from an unobservable to an observable at a high degree of spatial resolution, the PLSS section.

Lastly, our paper is related to research by Einav et al. (2013), who conduct the first study of selection on moral hazard. Moral hazard and adverse selection are conventionally analyzed as distinct phenomena of insurance markets, but Einav et al. connect the two by investigating an individual's selection of insurance coverage dependent on the expected behavioral response to the coverage. Here, we complement our focus on moral hazard in cropping pattern by examining the effect of pre-plant precipitation on crop insurance takeup, i.e., whether crop insurance coverage shifts in response to SURE's reduced deductibles in the same way as cropping pattern. This is a new perspective on adverse selection in the crop insurance market. Adverse selection is no longer considered to be a major concern in this market due to risk adjustment in contract pricing, i.e., setting insurance premiums based on farm-level data on historical crop yields and insurance claims (Du et al. 2017).¹² Our research reconsiders the possibility of adverse selection in crop insurance based on asymmetric information about how pre-plant precipitation affects cropping pattern. In doing so, we follow Einav et al.'s (2013) recommendation for research into selection on moral hazard in a context other than health insurance.

The interdependent topics of adaptation, moral hazard, and selection on moral hazard relate to significant public policy issues. Understanding farmers' adaptation to weather risk is essential for designing government programs to efficiently deal with the risk (Mendelsohn 2000). The importance and cost of these programs might only increase given that episodes of extreme weather are likely to increase under a changing climate.

The rest of the paper proceeds as follows. Section 2 describes relevant background. Section 3 describes the empirical strategy and data. Section 4 reports preliminary material on the effect of pre-

¹⁰ Einav et al. (2013) write of the "abuse of terminology" related to the notion of moral hazard used in the literature on health insurance. They note that moral hazard should refer to a hidden action that would affect an individual's health status. Beginning with Arrow (1963), however, "moral hazard" has instead referred to the responsiveness of health care spending to insurance coverage. Only by assumption does health care spending relate directly to health status and moral-hazard behavior. In this general context, Einav et al (2013) follow convention by defining moral hazard as the price elasticity of demand for health care rather than as a hidden action that would affect health status.

¹¹ Annan and Schlenker (2015) argue that an increase in insurance coverage caused a decrease in yield as a consequence of unobserved moral-hazard behavior. They rule out, albeit indirectly, that the lower yield is due to insuring lower quality land through the crop insurance market.

¹² Risk adjustment – the standard approach to mitigating adverse selection – is executed by setting insurance premiums based on observable characteristics of the buyer that predict his or her insurance claims (Einav et al., 2013).

plant precipitation on crop yields; this sets the stage for the main results. Section 5 presents the main regression results on land use, including adaptation and moral hazard in response to pre-plant precipitation. Section 6 presents the main regression results on crop insurance takeup and how it relates to land use, i.e., selection on moral hazard. Section 7 describes robustness checks on the land-use results. Section 8 offers concluding remarks.

2 Background

2.1 Precipitation and crop growth in the Midwest

Crops need water to grow. The amount of water available for crop growth in rainfed agriculture depends on the interaction between precipitation and the water-holding capacity of soil. In the Midwest, the amount of rainfall is usually favorable and the soil is deep with a high water-holding capacity such that cultivated crops can grow without irrigation. Compared to other crops, corn is sensitive to water stress (Steduto et al. 2012). Anderson et al. (2012) compare the sensitivity of crop growth to water inputs and report that corn's average sensitivity to water is greater than the sensitivity of other major crops in the region (soybeans, wheat, and alfalfa). Thus, when farmers expect extreme precipitation, they may substitute other crops for corn.¹³

Precipitation both prior to the growing season and during the growing season is important for crop growth, as this total supply provides the water to crops. Relative to growing-season precipitation, pre-plant precipitation provides three distinct influences on farmers' cropping pattern decisions. First, pre-plant precipitation can affect root growth. Precipitation from October through April is important in this region for recharging soil moisture. By recharging soil, pre-plant precipitation is then available as water to enhance root growth during the growing season (Neild and Newman 1990).

Second, pre-plant precipitation can affect crop growth through indirect mechanisms. For example, Iowa experienced exceptionally warm winters in 2011 and 2012. The resulting lower pre-plant precipitation affected insect ecology and water quality, which contributed to poor crop production in those years (Al-Kaisi et al. 2013). At the other extreme, excess pre-plant precipitation can increase the risk of seedling diseases. Farmers may extend the planting period in response to excess pre-plant precipitation, but this increases the risk of foregoing yield in the late summer (Steduto et al. 2012; Urban et al. 2015).

Third, pre-plant precipitation can affect farmers' expectation of total water available for crop growth. In this region, positive (negative) snowfall anomalies in winter are associated with wetter (drier) than normal conditions during the summer (Quiring and Kluver 2009). Our precipitation data also support this relationship. Thus, the realized lower (higher) precipitation prior to the growing season signals to farmers a higher likelihood of experiencing drier (wetter) conditions for crop growth.

¹³ In Table 2 of Anderson et al. (2012), the index of water-use efficiency (WUE) is compared across major U.S. crops. The WUE index is a proxy for a crop's average sensitivity to water. The index for corn is set at 1.0 as a benchmark. The indices of other major crops in our study region are: 0.65 for soybeans, 0.71 for wheat, and 0.43 for alfalfa. The smaller values indicate that, relative to corn, growth of these crops is less sensitive to water input.

2.2 Crop insurance

Since the 1980s, the U.S. government has relied on two policy tools, crop insurance and *ad hoc* crop disaster payments, to help farmers recover from financial losses due to natural disasters (Chite 2008). Two advantages of crop insurance, according to policymakers, are its ability to replace costly disaster payments and to assist more producers. Relative to disaster payments, insurance is also viewed as providing lower incentives for moral hazard and for planting crops on marginal lands (Glauber and Collins 2002).¹⁴ To increase participation rates, subsidy provisions for crop insurance thus were included in major legislative programs in 1980, 1994, and 2000, with the expectation of reducing reliance on disaster payments (Shields and Chite 2010).

The crop insurance market blends private incentives and government intervention.¹⁵ On the demand side, farmers purchase insurance by crop and pay premiums adjusted to their own historical crop yields and insurance claims. Farmers select either yield-based insurance or revenue-based insurance, where the latter includes both yield and crop price provisions. Farmers also select coverage levels. These range in five-unit intervals from 55% to 85%, and in some regions only to 75%, for yield coverage and the yield provision of revenue-based insurance. The percentages are relative to a benchmark of 100% of the farm's historical average yield of the crop. For the price provision, coverage levels range in five-unit intervals from 60% to 100%. These percentages are relative to a 100% benchmark set by the expected market price, as determined on futures markets. A larger coverage level naturally translates into a higher premium for insuring a given acreage of a crop. A larger coverage level also translates into a smaller deductible, i.e., the deductible equals 100% minus the coverage percent.

Here, we study the demand side of crop insurance using expenditures on premiums as the outcome variable. In 2014, farmers paid \$3.79 billion in premiums to insure 294 million acres of crops (Shields 2015). Nationally, this covered the vast majority of planted acreage of corn (87%), soybeans (88%), and wheat (84%).

The supply side of the crop insurance market relies on private insurance companies operating with substantial government intervention. Nineteen companies sell crop insurance to farmers, yet they function under the purview of USDA's Risk Management Agency and its Federal Crop Insurance Corporation (FCIC). The FCIC strictly limits the type of policies that can be sold, and it derives formulas for premium rates that are developed in the context of the federal government's subsidy provisions. In 2014, the crop-insurance subsidy totaled \$6.27 billion. Thus, the farmer-paid premiums of \$3.79 billion (38%) plus the \$6.27 billion in subsidy (62%) equaled the gross insurance premiums, \$10.06 billion. Both private and public expenditures on crop insurance are substantial.

¹⁴ Deryugina and Kirwan (2016) examine the relationship between crop insurance and disaster payments. They find that expected disaster payments affect producers' crop insurance decisions.

¹⁵ Shields (2015) provides an excellent introduction to crop insurance, including its type of products, institutional setting, and historical experience in the United States. We rely on this for many of the details here.

2.3 The Supplemental Revenue Assistance Payments program

The crop insurance program, by the mid-2000s, had failed to replace disaster payments despite substantial growth in its participation rates.¹⁶ To further promote crop insurance, the U.S. Congress authorized a new program in the 2008 Farm Bill, the Supplemental Revenue Assistance Payments program (Shields 2010). The SURE program supplemented crop insurance by compensating producers for so-called shallow losses, i.e., losses that were part of a policy's deductible. To be eligible for a SURE payment, a farmer needed to purchase insurance on all planted crops. Then to qualify for a payment, the farm: (i) had to be located in a federally declared disaster county or a county bordering a disaster county, or (ii) had to suffer a crop loss that exceeded 50% of expected yield. In its formula, the SURE payment increased with the farmer's insured coverage level.

Previous research has argued that the SURE program was likely to encourage moral hazard in farmer decision-making by both reducing the deductible at which payments began and converting to a whole-farm revenue approach. First, SURE payments were initiated when a crop suffered a yield loss of 10% or more, i.e., farmers could insure 90% of their expected yield when SURE payments were combined with insurance indemnities (Glauber 2013; Smith and Watts 2010). This contrasts with the typical maximum of 85% coverage of expected yield under crop insurance. This substantial reduction of deductibles under SURE created incentives for risk taking in crop choice and production. Empirically, Bekkerman et al. (2012) find that the SURE program markedly increased insurance participation rates, measured by the ratio of net insured acres to total planted acres at the county level.

Second, SURE payments were based on a whole-farm revenue approach whereas, prior to 2008, payments were based on crop-specific losses. To take advantage of SURE payments, farmers might eliminate crops from their rotations, thereby reducing the diversity inherent in a portfolio of crops (Shields 2010). Growing a single crop might increase the chance that a farm would drop below its guaranteed revenue threshold at which program payments were triggered. Therefore, changes in crop-choice decisions could be evidence of response to the program's incentives.

Payments to farmers were substantial under the SURE program. Bekkerman et al. (2012) report that \$2.11 billion in SURE payments were made for low production in 2008, which is about five times higher than the Congressional Budget Office's original estimated annual payments under the program, \$425 million (CBO 2011). The U.S. Government Accountability Office reports total SURE payments of \$2.52 billion for fiscal years 2008-2012 (USGAO 2014).

The SURE program ran for only a short time, 2008 through 2011. The program's timeline suggests that farmers did not make 2008 planting decisions with information about the program. At the same time, farmers later received SURE payments for 2008 crop losses. We excluded 2008 from the main analysis because of this ambiguity about program timing relative to farmer decision-making.

¹⁶ The U.S. Congress continued to establish *ad hoc* disaster assistance primarily through emergency supplemental appropriations. Thirty-nine acts established disaster payments to farmers between 1989 and 2007, and such payments were provided every year during this period (Chite 2010).

3 Empirical Strategy

This section includes three parts: a simple conceptual motivation of land-use and insurance decision-making under weather risk; description of the econometric models for studying land use, insurance take-up, and crop yield; and description of the data.

3.1 Conceptual motivation

We motivate the econometric analysis of land use and insurance take-up with a simple stylized example that considers farmer decision-making faced with growing-season weather risk. It begins with conditions prior to the SURE program, and continues with an extension to the SURE program. For sake of illustration, we consider a farmer's choice to plant wheat or corn on a North Dakota farm.

Pre-SURE program. March 15 is the deadline for purchasing crop insurance. The farmer will purchase insurance in any case in our example; but because the insurance is crop specific, the insurance decision is, in fact, the decision on which crop to grow, wheat or corn.

The farmer observes pre-plant precipitation on March 15. Pre-plant precipitation is the signal for soil moisture conditions in early May (the window for planting) and for precipitation during the growing season. Here we posit that pre-plant precipitation is relatively low on March 15, and this signal creates conditional probabilities of two precipitation outcomes for the planting and growing seasons. Only two outcomes are considered for ease of exposition.

State of nature 1: adequate precipitation for growing both wheat and corn (at probability p_1)

State of nature 2: adequate precipitation for growing wheat, but low precipitation for growing corn (at probability $(1 - p_1)$).

Profit is generated from allocating cropland either to wheat (W) or corn (C). Expected profit, by crop, encompasses profit (π) under the two states of nature. These are

$$E\pi^W = p_1\pi_1^W + (1 - p_1)\pi_2^W,$$

and

$$E\pi^C = p_1\pi_1^C + (1 - p_1)\pi_2^C.$$

We posit that, given the relatively low pre-plant precipitation, the expected profit from growing wheat exceeds the expected profit from growing corn, or

$$E\pi^W > E\pi^C.$$

The farmer thus allocates cropland to wheat, not corn, given corn yield's sensitivity to water input. In extrapolating to our empirical analysis, we expect wheat acres to increase, and corn acres to decrease, as pre-plant precipitation decreases to a level of water deficit in North Dakota. The farmer also purchases crop insurance for wheat, not corn.

SURE program. In the hypothetical, the SURE program reduces the deductible on crop insurance; farms with yield losses in the 75-90% range of historical yields now qualify for SURE payments. We suppose, on the farm considered here, that corn yield is below 90% of historical yield in state of nature 2. Conventional profit from corn is now augmented with a SURE payment, with the new profit designated as $\pi_2^{C'}$. With $\pi_2^{C'} > \pi_2^C$, we posit that corn production now generates higher expected profit than wheat, or

$$E\pi^{C'} = p_1\pi_1^C + (1 - p_1)\pi_2^{C'} > E\pi^W.$$

The farmer changes crops, now allocating cropland to corn, not wheat. This illustrates the moral hazard created by the SURE program: the farmer is taking a risk on corn. The farmer also purchases crop insurance for corn, not wheat. Once again extrapolating to the empirical analysis, we expect the program to increase corn acres and decrease wheat acres – relative to pre-program levels – over the range of relatively low pre-plant precipitation levels. In addition, we expect insurance coverage to increase on corn, reflecting selection on moral hazard. These are the type of treatment effects expected from the SURE program.

3.2 Piecewise linear regression models

Our study area includes four major agricultural states in the Midwest: the entire states of Iowa and Illinois and the regions east of the 100th meridian in North Dakota and Nebraska that rely on rainfed farming. The study encompasses 2001-2014. By beginning in 2001, we avoid the period prior to the major change in crop insurance policy (substantially increasing premium subsidies) that was enacted in 2000 with the Agricultural Risk Protection Act. We span the SURE program years, 2009-2011, which enables analysis of the post-program period as part of the research design. By ending in 2014, we avoid a new supplemental insurance program that was enacted in the Agricultural Act of 2014 and implemented in 2015.

In the analysis, we exploit random year-to-year variation in pre-plant precipitation as a natural experiment. Pre-plant precipitation operates as a continuous treatment variable, with the treatment intensity varying across the observed range of pre-plant precipitation. In tandem with the weather experiment, we utilize the SURE program's shock to insurance deductibles as a quasi-experiment. The identifying assumption of the estimation strategy for SURE treatment effects is that local pre-plant precipitation shocks are exogenous to the policy changes in 2009 and 2012. We find no evidence that our pre-plant precipitation variable and the policy changes are correlated. More generally, it is unlikely that annual pre-plant precipitation caused a policy change such as the SURE program, or that the SURE program caused a change in pre-plant precipitation.

Land-use regressions. Previous research has demonstrated a strong nonlinearity in the relationship between precipitation during the growing season and crop yield outcomes (Annan and Schlenker 2015; Burke and Emerick 2015; Schlenker and Roberts 2009). These findings – that both water shortage and water excess affect yield negatively – motivate our approach to investigating whether farmers adjust cropping pattern based on realized pre-plant precipitation. Many of the previous studies use higher order terms of precipitation to capture the nonlinear effect. However, using these

functional forms in a panel setting means that a unit-specific mean re-enters the estimation, raising omitted variables concerns, as identification in the panel models is no longer limited to location-specific variation over time (McIntosh and Schlenker 2006). We instead use a piecewise linear approach, following Schlenker and Roberts (2009) and Burke and Emerick (2015). This allows us to identify the effects of both risks – water shortage and water excess – on farmers’ cropping pattern response to pre-plant precipitation. Our use of high-resolution spatial data on land use and weather facilitates estimation of a flexible model that can detect nonlinearities and thresholds in the effect of pre-plant precipitation on land allocation to crops.

We model log planted acres of a crop in section i and year t ($cropacre_{it}$) as a piecewise linear function of pre-plant precipitation with a threshold (or kink) at p_0 . The effect of the new SURE program in 2009 on cropping pattern adaptation to precipitation risk is identified with the interaction term between our pre-plant precipitation variable $prec_{it}$ and a policy dummy $d09_t$ equal to 1 if the year is 2009 to 2011. Similarly, the effect of the termination of the SURE program on cropping pattern adaptation to precipitation risk is identified with the interaction term between $prec_{it}$ and a policy dummy $d12_t$ equal to 1 if the year is 2012 or later. We estimate the fixed effects model:

$$\begin{aligned}
cropacre_{it} = & \alpha + \beta_1 prec_{it;p < p_0} + \beta_2 prec_{it;p < p_0} d09_t + \beta_3 prec_{it;p < p_0} d12_t \\
& + \beta_4 prec_{it;p > p_0} + \beta_5 prec_{it;p > p_0} d09_t + \beta_6 prec_{it;p > p_0} d12_t \\
& + \gamma temp_{it} + \mathbf{X}\theta + \mu_i + \delta_t + t + t^2 + \epsilon_{it}
\end{aligned} \tag{1}$$

where the variable $prec_{it;p < p_0}$ is the difference between pre-plant precipitation and p_0 interacted with an indicator variable for pre-plant precipitation being below the threshold p_0 . $prec_{it;p > p_0}$ is similarly defined for pre-plant precipitation above the threshold. We allow the data to determine p_0 by looping over all possible thresholds and selecting the model with the lowest sum of squared residuals. The variable $temp_{it}$ is the average pre-plant temperature from October 1 to March 15. \mathbf{X} is a vector of control variables, include planting-season precipitation and temperature, and crop futures price. The μ_i are section fixed effects that control for unobserved time-invariant characteristics that affect cropland use, such as climate and soil quality. Because the PLSS aligns with patterns of farm ownership and management, the section fixed effects can also control for unobserved farmer characteristics such as management skills and risk perception (Holmes and Lee 2012). Year fixed effects δ_t account for unobserved common year-specific effects across sections, such as crop prices, and statewide and national policies, such as crop insurance premiums and biofuel policy. Similar to Annan and Schlenker (2015), we include a quadratic time trend, which is common to a state, to control for trends in agricultural technologies (such as seed types or drainage capital) that might affect yields and related land-use decisions.

The parameters of interest are the set of β . β_1 and β_4 provide estimates of how farmers’ crop acreage decisions respond to pre-plant precipitation prior to the SURE program, both below and above the threshold, respectively; these parameters estimate adaptation. β_2 and β_5 provide estimates of the SURE treatment effects, or how farmers *change* their response to pre-plant precipitation under the SURE program; these parameters estimate moral hazard. Hence, $\beta_1 + \beta_2$ and $\beta_4 + \beta_5$ provide

estimates of how farmers respond to pre-plant precipitation under the SURE program below and above the threshold, respectively. β_3 and β_6 provide estimates of how farmers *change* their response after the SURE program relative to during the program. $\beta_1 + \beta_2 + \beta_3$ and $\beta_4 + \beta_5 + \beta_6$ provide estimates of how farmers respond to pre-plant precipitation after the SURE program, both below and above the threshold, respectively. These parameters once again estimate adaptation.

Equation (1) is estimated by crop and by state for Illinois, Iowa, Nebraska, and North Dakota.

An important note with respect to the SURE treatment effects (β_2 and β_5) is that we do not observe purchase of crop insurance at the section level. That is, when observing land use in a section, we do not know whether the crops are insured. Insurance participation rates are quite high in general, with almost 90 percent of U.S. corn, soybean, and wheat acres covered by insurance. Nevertheless, the implication is that the estimated treatment effects are underestimates of the true effects.

Lastly, an ambiguity arises with observations from 2008. The SURE program was part of a policy enacted on May 22, 2008, so it is unlikely that farmers could have included information about the program in insurance and planting decisions by March 15 of 2008. Nevertheless, we exclude observations from 2008 from our main analysis, and then include them in the pre-program period in a robustness check.

Insurance take-up regressions. We estimate crop insurance take-up using the same structure of a piecewise linear function. We model log insurance premiums per planted acre of a crop in county c and year t ($premiums_{ct}$) as a piecewise linear function of total pre-plant precipitation with a threshold at p_0 . Here we apply the actual value of the threshold p_0 from the land-use regression as a way to gauge whether the SURE treatment effect on insurance take-up follows the SURE treatment effect on land use (selection on moral hazard). We estimate the fixed effects model:

$$\begin{aligned}
premiums_{ct} = & \alpha + \beta_1 prec_{ct;p < p_0} + \beta_2 prec_{ct;p < p_0} d09_t + \beta_3 prec_{ct;p < p_0} d12_t \\
& + \beta_4 prec_{ct;p > p_0} + \beta_5 prec_{ct;p > p_0} d09_t + \beta_6 prec_{ct;p > p_0} d12_t \\
& + \gamma temp_{ct} + \mathbf{X}\theta + \mu_c + \delta_t + t^2 + \epsilon_{ct}
\end{aligned} \tag{2}$$

where μ_c are county fixed effects that control for unobserved time-invariant characteristics that affect insurance take-up, such as expected disaster payments in the county or the historical probability of a county being declared a disaster county. Other variables are defined as in equation (1).

The outcome variable in each insurance regression is specified as a rate, premiums divided by total planted acres, and not simply premiums.¹⁷ To demonstrate selection on moral hazard, farmers need to purchase better insurance coverage when, for example, they are increasing acreage in a crop after being treated with the SURE program. With the county-level data, this requires showing increases in insurance coverage per acre of a crop, i.e., the rate of insurance must be increasing. Thus, the

¹⁷ Deryugina and Kirwan (2016) use premiums as their outcome variable, arguing that it captures both the intensive margin (choice of a discrete coverage level) and extensive margin (insured acres) of crop insurance. Annan and Schlenker (2015) use the rate of insurance, insured acres divided by total planted acres.

parameters of interest are the SURE treatment effects, β_2 and β_5 , and how they compare to the respective β_2 and β_5 for a particular crop from the land-use regressions.

Equation (2) is estimated for corn and soybean insurance premiums by state for Illinois and Iowa.

Crop yield regressions. We estimate crop yield regressions while once again using the same structure of a piecewise linear function. We model log crop yield in county c and year t ($cropyl_{ct}$) as a piecewise linear function of pre-plant precipitation with a threshold at p_0 . We estimate the fixed effects model:

$$\begin{aligned} cropyl_{ct} = & \alpha + \beta_1 prec_{ct;p < p_0} + \beta_2 prec_{ct;p < p_0} d09_t + \beta_3 prec_{ct;p < p_0} d12_t \\ & + \beta_4 prec_{ct;p > p_0} + \beta_5 prec_{ct;p > p_0} d09_t + \beta_6 prec_{ct;p > p_0} d12_t \\ & + \gamma temp_{ct} + \mathbf{X}\theta + \mu_c + \delta_t + t^2 + \epsilon_{ct} \end{aligned} \quad (3)$$

where \mathbf{X} is a vector of variables for weather during the planting and growing seasons that serve as controls. We allow the data to determine p_0 by looping over all possible thresholds and selecting the model with the lowest sum of squared residuals. Other variables are defined as in equation (2).

Equation (3) is estimated for corn and soybean yields using data pooled across Illinois, Iowa, and eastern North Dakota. Once again, the parameters of interest are the set of β , and they are interpreted in a similar way as the β in equation (1). These parameters show the estimated effects of pre-plant precipitation on crop yields.

3.3 Data

The unit of analysis for studying land use is the PLSS section, which is a 1-by-1 mile square piece of land. We use a GIS data layer to define sections (ESRI 2015). By state, the number of sections includes: Illinois 45,372; Iowa 50,020; Nebraska 14,426; and North Dakota 27,151 (Table 1). Sections in eastern North Dakota and eastern Nebraska with irrigated land are excluded.¹⁸ Following Schlenker et al. 2005, the analysis focuses solely on rainfed farming.

The unit of analysis for studying insurance takeup and crop yield is the county. By state, the number of counties includes: Illinois 102; Iowa 99; and North Dakota 28. The county-level statistical analysis excludes eastern Nebraska because of its preponderance of irrigated agriculture; almost two-thirds of PLSS sections in eastern Nebraska rely on irrigation.

Land-use data. The land-use data are from the National Agricultural Statistics Service's Cropland Data Layer (CDL) program, which provides high-resolution geospatial data on crops planted and other types of land cover for the United States.¹⁹ For the four states, we constructed a balanced panel

¹⁸ Data on the sections with irrigated agriculture are from the 250-m scale irrigation map in 2007 from the Moderate Resolution Imaging Spectroradiometer (MODIS) Irrigated Agriculture Dataset for the United States (MIrAD-US). See Brown and Pervez (2014) for documentation.

¹⁹ Donaldson and Storeygard (2016) highlight the CDL as an example of high-resolution satellite data with promising potential for application in economics.

of planted acres by crop within the 640-acre PLSS sections for 2001-2014 (2002-2014 for Nebraska). The section-level data are generated by summing over the CDL grids within each section.

Table 1 presents summary statistics for mean acreage by state for corn, soybeans, spring wheat, and grassland, averaged over the sections and study period. The most common crops in North Dakota are spring wheat and soybeans, which sum to 228 acres per section. Corn is the most common crop in Illinois and Iowa, with soybeans also grown at high levels. Grassland is a major type of land cover in all four states, especially in North Dakota and Nebraska. Grassland is a single land-cover category, not a crop. Since CDL data are less reliable for differentiating among several land cover types – including alfalfa, fallow/idle cropland, unmanaged grassland, pasture, and hay – these land covers are combined into a single *grassland* category.

Figure 1 displays acreages of major types of cropland use across years. On average, acreages of corn and soybeans in North Dakota are larger after 2012 than from 2009-2011, which are larger than those before 2008. The differences could be driven by the price effects of biofuel policy, which we control for with year fixed effects. Acreages of corn and soybeans are relatively stable across the three periods in other states. Grassland acreage decreases after 2008 in all states, especially in North Dakota, where it decreases over time for the entire study period.

Weather data (section level). The weather data are an updated version of those used in Schlenker and Roberts (2009), which consist of daily precipitation and maximum and minimum temperatures at 4-by-4 kilometer grid cells in the U.S. for 1950-2014. For each cell, pre-plant precipitation is the accumulated precipitation from October 1 in the previous year to March 15 in the current year, i.e., precipitation from the end of the previous growing season through the deadline for purchasing crop insurance. Pre-plant temperature is computed by averaging daily-average temperature over the same period. Planting-season precipitation is the accumulated precipitation from March 16 to May 31 for Iowa, Illinois, and Nebraska, and from March 15 to June 15 for North Dakota. Planting-season temperature is the average of daily temperatures over these same periods. To match the spatial delineation of the land-use data, these four data series are converted to the section level by averaging each series over the intersected cells.

Using the section as the unit of analysis takes advantage of the high-resolution precipitation data. While temperature is a large-scale weather event, precipitation tends to be a micro-scale weather event, i.e., precipitation intrinsically varies more spatially because local vegetation and geography can affect it. Use of aggregated weather data may result in small variation in precipitation variables.²⁰

Mean pre-plant precipitations in North Dakota and Nebraska are 127.99 mm and 156.29 mm, respectively, which is substantially lower than the 226.37 mm of Iowa and 380.52 mm of Illinois (Table 1). Illinois also has relatively larger variation in pre-plant precipitation. Using the raw data, Figure 2 presents different forms of the nonlinear relationship between pre-plant precipitation and

²⁰ Mearns et al. (2001) and Fezzi and Bateman (2015) show that climate impact studies that use aggregated precipitation data to analyze a large spatial scale (such as county level or country level) may fail to capture the high variation of precipitation and thus may underestimate its importance.

corn acreage for each state during the three periods: before 2008, 2009-2011, and 2012-2014. In North Dakota, for example, relatively low pre-plant precipitation occurred during 2001-2007 and after 2012, while relatively high pre-plant precipitation occurred during 2009-2011, as can be seen in Panel (A). In Illinois and Iowa, Figure 2 shows that the relationships between pre-plant precipitation and corn acreage are somewhat similar across the three periods. In North Dakota, and Nebraska, in contrast, the relationships between pre-plant precipitation and corn acreage during 2009-2011 appear very different to those during the other two periods.

One concern with the land-use regressions is that the section and year fixed effects can absorb a significant amount of the variation in the pre-plant precipitation variables (Fisher et al. 2012). Following Fisher et al. (2012), we explore how much of the variation is absorbed by the fixed effects. The Appendix reports results showing that substantial residual variation exists to implement our approach (Table A1). This conclusion is reinforced by the standard errors on the various estimated coefficients on the pre-plant precipitation variable in the (subsequent) land-use regressions.

Weather data (county level). We also use the same raw data to produce county-level weather data for the crop insurance regressions and the yield regressions. For the crop insurance regressions, the four county-level weather variables are: pre-plant precipitation, pre-plant temperature, planting-season precipitation, and planting-season temperature. Their summary statistics are reported for the states with insurance regressions, Illinois and Iowa (Table 1).

County-level weather data are also produced for the yield regressions for the relevant states: Illinois, Iowa, and eastern North Dakota. Seven variables are developed: pre-plant precipitation, pre-plant temperature, planting-season precipitation, planting-season temperature, growing-season precipitation, growing-season temperature, and the daily maximum temperatures during July. Summary statistics for the three-state region are reported in the Appendix (Table A2).

Insurance data. County-level administrative data on insurance premiums are from USDA's Risk Management Agency (RMA). We use the dollar value of premiums paid by farmers.²¹ These data cover corn and soybeans in Illinois and Iowa. Our dependent variable in the insurance regressions is premiums divided by total planted acres of the respective crop, or dollars per acre. County-level data on total planted acres are from USDA's National Agricultural Statistics Service (NASS). Summary statistics are reported in Table 1.

We exclude North Dakota from the state-based analysis of insurance premiums. With only 28 counties, eastern North Dakota presents challenges for obtaining accurate regression estimates. More important, the crop insurance data are of questionable quality in North Dakota. The data were first questioned by Annan and Schlenker (2015), who were concerned with data on total planted acres. To understand this further, we display data on insured acres from RMA versus planted acres from NASS (Figure 3). Beginning in 2008 and continuing through 2014, the number of insured acres

²¹ Premiums paid by farmers are relevant for decision-making, while the premium subsidy paid by the federal government is not.

equaled and, in several years, greatly exceeded planted acres for corn and soybeans in the state. For this reason, we do not estimate insurance take-up regressions for the crops in North Dakota.²²

Futures price data. National data on futures prices for corn, soybeans, and wheat are from USDA's Risk Management Agency. They represent monthly average prices for February of the current growing season. These are the prices used in the formulas for revenue-based insurance of these respective crops. Thus, futures price variables may help to explain both land-use and insurance decisions.

Yield data. County-level data on crop yields of corn and soybeans in bushels per acre are from USDA's NASS. Summary statistics are reported in the Appendix for the study region of Illinois, Iowa, and eastern North Dakota (Table A2). Wheat yield is not studied as wheat is not one of our crops in Illinois and Iowa. Similarly, grassland is not studied; grassland is an amalgamation of land covers and so does not have related yield data.

4 Preliminaries: Does Pre-plant Precipitation Affect Crop Yield?

We begin with preliminary analysis that examines the effect of pre-plant precipitation on crop yields. The intent is to establish that pre-plant precipitation affects crop yields, i.e., that there is an empirical justification for farmers to include pre-plant precipitation in decision-making. We pool the county-level data for 2001-2014 across three states: Illinois, Iowa, and North Dakota (with North Dakota limited to counties in the eastern part of the state).²³ Pooling the data across states is appropriate with yield regressions.²⁴ We apply equation (3) to estimate piecewise linear regressions for corn yield and soybean yield, using the common structure in our approach to assessing effects before, during, and after the SURE program. In addition to pre-plant precipitation and pre-plant temperature, other weather variables (just described above) are included as controls. The Appendix describes the variables and full results in more detail.

The results show that pre-plant precipitation affects crop yields, with small but significant effects in most cases. Begin with corn yields (Table A3 and Figure A2 in the Appendix). Below the precipitation threshold, the effect of pre-plant precipitation is positive and highly significant in the

²² The difference between planted acres and insured acres could be explained by "acres prevented from planting" before the planting deadline under the crop insurance program. Additional research on this topic is needed to understand the incentive that crop insurance provides not to plant acres, and how that interacts with pre-plant weather.

²³ We exclude our study counties in Nebraska from the analysis of crop yields due to the high rate of irrigation in eastern Nebraska. In these counties, 63.4% of the sections are in irrigated agriculture and 36.6% are in rainfed agriculture. This preponderance of irrigation skews the county-level data on crop yields.

²⁴ Pooling the data across states is appropriate with yield regressions but not land-use regressions. With land use, individual farms typically grow more than one crop each season, and multiple crops are competing to be selected for planting in any given field. This competition can vary across states, e.g., corn competes with wheat for land use in North Dakota, but does not compete with wheat in Iowa. This implies a multi-output technology with tradeoffs that may differ from state-to-state, such that state-specific regressions may be warranted. Yield, in contrast, implies a single-output technology that depends primarily on agronomic considerations in the short run, such that pooling data across states is defensible. Empirically, several studies apply data pooled across states when examining the effect of extreme weather on crop yield (e.g., Schlenker and Roberts 2009; Lobell et al. 2014; Urban et al. 2015).

pre-SURE phase of 2001-2007; and positive but insignificant in the post-SURE phase of 2011-2014. Above the threshold, pre-plant precipitation exerts negative and highly significant effects in both the pre- and post-SURE phases.

Turn next to soybean yields. Below the precipitation threshold, the effect of pre-plant precipitation is negative and highly significant in the pre-SURE phase; and negative but insignificant in the post-SURE phase. Above the threshold, pre-plant precipitation exerts negative and significant effects in both the pre- and post-SURE phases.

With the SURE program, the respective *changes* in corn yields and soybean yields are positive, with three of four estimated coefficients highly significant on variables that interact the SURE program with pre-plant precipitation (Table A3 and Figure A2 in the Appendix). This is interesting per se, as it counters intuition that risk-taking during the SURE program will lead to productivity losses. In a separate study, we are investigating soil quality as a possible mechanism to explain this. Farmers might have grown corn and soybeans on land with higher quality soil during the SURE program.

To summarize: the two yield regressions provide empirical support for the idea that farmers consider pre-plant precipitation in land-use and insurance take-up decision-making.

5 Results I: Adaptation and Moral Hazard in Land Use

Results from the land-use regressions (equation (1)) are reported in three subsections. The first discusses the main estimation results for a single crop, corn, which is recognized as a water-sensitive crop, and a major crop, in the Midwest. The second discusses results for a single state, North Dakota, which has a diversity of crops and land allocations. The third discusses results for the other three crops and states.

Prior to reporting results, we first explain why we do not pool the data and estimate a single regression for each crop that encompasses the four states. After all, the section fixed effects account for several time-invariant unobservables at the section level, such as soil quality, climate factors, and farm management skills. But our focus on cropping pattern – and the various crop substitutions that result in substantially different acres allocated to a particular crop across states – provides one rationale for the state-level analysis. We can observe this heterogeneity in the average cropland allocations in a section and how those allocations vary across states (Figure 1).

A second factor favoring state-level regressions is the heterogeneity across states in pre-plant precipitation thresholds. In the piecewise linear approach, we allow the data for a state to determine each crop's threshold by looping over all possible thresholds based on equation (1), and then selecting the model with the lowest sum of squared residuals. As an example, the thresholds of pre-plant precipitation for corn vary widely across states: 100 mm in North Dakota, 370 mm in Iowa, 395 mm in Illinois, and 135 mm in Nebraska (Table 2). With different thresholds, the piecewise linear functions vary substantially across states. Figure 4 illustrates this using the regression results for corn.

Overall, we estimate 13 land-use regressions for the four crops across the four states. The effects of pre-plant precipitation are captured in 77 estimated coefficients, with 51 of these reflecting the interaction with the SURE program and post-SURE program. Of the 77 estimates, 52 are statistically significant, i.e., pre-plant precipitation exerts meaningful causal effects on agricultural land use.

5.1 The effect of pre-plant precipitation on corn acres

The regression results for corn show economically and statistically significant responses to pre-plant precipitation in the study states (Table 2). Farmers in states with relatively poorer natural capital in their climate and soil conditions²⁵ were more responsive – these are North Dakota and Nebraska. Farmers in Iowa and Illinois, in contrast, were less responsive to both pre-plant precipitation and the interaction of pre-plant precipitation with the SURE program.

North Dakota: farmers are quite responsive to both pre-plant precipitation and its interaction with the SURE program. Column (1) of Table 2 reports the results for corn in North Dakota. Before the policy change in 2009, a 1 mm decrease in pre-plant precipitation below the threshold decreases corn acreage by 1.0 percent, while a 1 mm increase in pre-plant precipitation above the threshold decreases corn acreage by 0.6 percent. The results imply that farmers adapted to abnormal pre-plant precipitation by planting fewer acres in corn. This adaptation strategy was adopted even though the crop insurance program was in place. The program had created moral hazard problems even before 2009 (Roberts et al. 2011).

Under the SURE program in 2009 to 2011, we do not obtain a statistically significant effect below the threshold, perhaps because there are relatively few observations below the threshold in North Dakota during this period. However, above the threshold, a 1 mm increase in pre-plant precipitation actually *increases* corn acreage by 0.3 percent, which is the sum of the coefficients -0.006 and 0.009. The result suggests that farmers chose to grow corn despite the risk of excess precipitation, implying that the program introduced moral hazard into land-use decisions in North Dakota.

Results from after the program's termination in 2012 only strengthen this perspective. Here, a 1 mm increase in pre-plant precipitation *deceases* corn acreage by 0.7 percent, which is derived as the sum of -0.006, 0.009, and -0.010. Notice that the effect returns to a similar slope as before the SURE program was enacted, i.e., the increase of the corn acreage function due to the new policy in 2009 was virtually offset by the decrease due to termination of the policy in 2012. This lends credibility to the interpretation of the SURE program exerting a causal effect.

Figure 4 illustrates the piecewise-linear estimation results for North Dakota in Panel (A). Before 2009, corn acreage increases linearly up to the endogenous threshold of pre-plant precipitation (100 mm) and then decreases linearly above that threshold; the green dashed line depicts this inverted-V-shaped effect. Under the SURE policy, the relationship changes substantially, as shown by the red

²⁵ The Appendix describes data on soil quality at the section level across the four states. Illinois and Iowa have relatively high soil quality, while Nebraska has the poorest soil quality. Soil quality in North Dakota approaches that of Illinois and Iowa.

dashed line. However, after the program's termination, the relationship returns to virtually the original inverted-V-shaped effect of pre-2009; this is the blue dashed line in the figure.

Nebraska: farmers are responsive to pre-plant precipitation. Like North Dakota, farmers in Nebraska shows responsiveness in corn acres as a function of pre-plant precipitation (column (4) of Table 2 and Panel (D) of Figure 4). Before the policy change in 2009, a 1 mm decrease in pre-plant precipitation below the threshold decreases corn acreage by 0.9 percent. After the policy change in 2009, the estimated coefficient of 0.012 shows a substantial increase in corn acres, such that a 1 mm decrease now increases acreage by 0.3 percent. Farmers thus are willing to risk corn production in the face of a water deficit, apparently due to the risk protection of the SURE program. Following the program's termination, farmers return to fewer corn acres when faced with pre-plant precipitation below the threshold.

Above the threshold in Nebraska, we find a similar pattern to North Dakota's result both before 2009 and during the SURE program. But the estimates are smaller, and we find no evidence about corn acreage change after termination of the SURE program. The results suggest that above the threshold, corn acreage in Nebraska is not as sensitive to the program changes as in North Dakota.

Iowa and Illinois: farmers are generally less responsive to pre-plant precipitation and its interaction with the SURE program. Relative to North Dakota and Nebraska, farmers are less responsive in corn acres in Iowa and Illinois, states in which both mean pre-plant precipitation and soil quality are much higher (Table 2 and Figure 4). Before 2009, the estimated coefficients on pre-plant precipitation are not statistically significant in Iowa. Iowa appears to combine the ideal climatic and soil conditions for growing corn such that it is the optimal choice under a range of pre-plant precipitation conditions. In Illinois, the coefficient is statistically significant and indicates a small 0.1 percent decrease in acres given a 1 mm increase in pre-plant precipitation above the threshold. Though small, some adaptation is occurring in Illinois.

Three of four treatment effects are statistically significant under the SURE program, and three of four treatment effects are also significant in the post-SURE period. The SURE effect above the threshold in Iowa is similar in magnitude to that in North Dakota; a 1 mm increase in pre-plant precipitation increases corn acreage by 0.6 percent. After program termination in 2012, the decrease in the corn acreage function offsets this effect. Farmers reverse course, once again supporting the idea that the SURE program generates a causal effect.

The pairing of high quality soils and plentiful precipitation for corn growth characterizes much of the natural capital that underlies the production technology for agriculture in Illinois and Iowa. Consequently, corn is not a marginal crop as a function of pre-plant precipitation in these two states.

5.2 Cropping pattern in North Dakota

We return to the perspective of cropping pattern in describing results for North Dakota's diverse mix of corn, grassland land cover, soybeans, and spring wheat.²⁶ Table 3 reports regression results and Figure 5 graphs the piecewise linear functions. We learned that North Dakota farmers are responsive in corn acres: in the pre-2009 period, corn acres decrease as pre-plant precipitation decreases (increases) below (above) the threshold. What substitutes for corn during this period? Below the threshold, soybean acres increase substantially as precipitation decreases. Wheat, however, responds like corn, and grassland acres show no effect. Above the threshold, all three crops respond positively to pre-plant precipitation in substituting for corn. In fact, eleven of twelve estimated coefficients above the threshold are statistically significant.

When treated with the SURE program, corn acres shift upward while wheat, soybeans, and grassland acres generally shift downward as a function of pre-plant precipitation above the thresholds.

Termination of the SURE program generated several statistically significant responses both above and below the precipitation thresholds. Above the thresholds, the acreage relationships for corn, grassland, and wheat returned toward the pre-program relationship. This was also the case for wheat below the threshold.

Overall, in response to pre-plant precipitation, farmers in North Dakota show adaptation through cropping pattern followed by moral hazard in cropping pattern under the SURE program.

5.3 Other crops and states

The other main results include grassland land covers and soybeans in states other than North Dakota. In general, grassland acres show statistically significant but small responses to pre-plant precipitation as an adaptation strategy in Iowa, Illinois, and Nebraska (Table 4). Nebraska and Illinois show similar patterns here of adapting to precipitation extremes by changing grassland acres. These effects are quite small, with estimated coefficients in the 0.001 to 0.003 range in absolute value.

Soybean acres show similarly small responses to pre-plant precipitation, and with fewer estimated coefficients being statistically significant (Table 5). Like corn, soybeans are not a marginal crop as a function of pre-plant precipitation in Iowa. However, soybeans are part of the cropping pattern response to the SURE program in both Iowa and Illinois. Farmers substitute away from soybeans below the thresholds in Iowa and Illinois; and above the threshold in Iowa. Following the program's termination, farmers return to their pre-program response to precipitation above the thresholds in Iowa and Illinois. In Nebraska, there is substitution toward soybean acres, both below and above the threshold, in response to the SURE program.

²⁶ Note that the type of wheat grown in North Dakota is spring wheat, not winter wheat. Spring wheat is planted during the normal spring planting season, and thus its acreage may be influenced by pre-plant precipitation.

6 Results II: Selection on Moral Hazard in Insurance Takeup

We use equation (2) to estimate insurance takeover regressions for two crops in two states: corn and soybeans in Illinois and Iowa.²⁷ In the piecewise linear regressions, the threshold values for pre-plant precipitation are taken from the land-use regressions for the respective crops and states. For example, the threshold of 370 mm from the corn acres regression in Iowa is applied as the threshold in the comparable insurance regression. Table 6 reports the results and Figure 6 graphs the results as a function of pre-plant precipitation.²⁸

In studying selection on moral hazard, the question is whether SURE's treatment effect on crop insurance premiums per planted acre follows the sign and significance of the treatment effect on crop acres.²⁹ The results for corn provide reasonably strong supporting evidence. First, for corn acres in Iowa, the SURE treatment effect is negative and significant below the threshold; and positive and significant above the threshold (Table 2). Corn insurance premiums follow the same pattern of treatment effects: negative and significant below; and positive and significant above (Table 6). In addition, the magnitudes of the estimated coefficients are quite similar across the two regressions. Second, for corn acres in Illinois, the treatment effect is positive and significant below the threshold; and positive but insignificant above the threshold (Table 2). Corn insurance premiums show roughly the same pattern: the treatment effects are positive and statistically significant both below and above the threshold. Moreover, the magnitudes of the estimated coefficients are quite similar across these two regressions.

The results for soybeans provide mixed evidence, with supporting evidence in each state on one side, but not both sides, of the respective thresholds. First, for soybeans acres in Iowa, the SURE treatment effect is negative and significant both below and above the threshold (Table 5). Soybean insurance premiums follow the same pattern below the threshold, but they are positive and significant above the threshold (Table 6). Second, for soybeans acres in Illinois, the treatment effect is negative and significant below the threshold; and positive and significant above the threshold. The treatment effects for soybean insurance premiums, in contrast, are positive and significant below the threshold and insignificant above the threshold.

We conclude, overall, that the results show limited evidence of selection on moral hazard. The county-level data on insurance premiums and weather may be a limiting factor in producing results that accord more closely to the soybean acreage results generated with section-level data.

²⁷ As mentioned above, insurance regressions are not estimated for crops in Nebraska and North Dakota due to issues in the county-level data that are not present in the section-level data.

²⁸ The estimated coefficients on the variables for futures prices for corn and soybeans lend credibility to the overall results on insurance takeover. These prices serve directly as parameters of revenue-based crop insurance. When insurance pays out, indemnity increases in futures price. The four estimates are positive and highly significant.

²⁹ We study land use and insurance takeover as concurrent decisions that reveal moral hazard and selection on moral hazard. In contrast, Einav et al. (2013) develop a two-period model with selection of insurance coverage in the first period and health care utilization in the second period.

7 Robustness Checks

In this section, we explore the sensitivity of our land-use regression results to three different modeling choices.

Removing sections that have zero acres of a crop during the study period. The first robustness check examines whether the results change if observations are removed from the small number of sections that have zero acres of a crop during the entire study period. As shown in columns with (a) in Table 7, the estimated effects of pre-plant precipitation on corn acreage under the different policy regimes are almost the same as our main results reported in Table 2. This is not surprising because the shares of the sections with zero corn acres during the study period are very small in each of the four states. The same conclusion applies for the other crops in the four states.

Treating 2008 as a control year. The second robustness check examines whether the results are sensitive to inclusion of observations from 2008 as part of the pre-program period, i.e., expanding the period to 2001-2008 rather than 2001-2007.³⁰ In columns with (b) in Table 7, we observe that the estimated effects of pre-plant precipitation on corn acreage under the different policy regimes are similar to our main results reported in Table 2. The same conclusion applies for the other crops in the four states.

Including potentially endogenous variables. The third robustness check examines potential endogenous variables that may be correlated with both pre-plant precipitation and cropping pattern decisions. These variables include an interaction term between pre-plant precipitation and pre-plant temperature; aggregated precipitation from April through September of the previous growing season; and average temperature during the same previous growing season. As reported in columns with (c) in Table 7 for corn, the coefficients of our pre-plant precipitation variables under different policy regimes retain the same sign with similar magnitudes and statistical significance when compared to our main estimation results, as reported in Table 2. One minor exception is Illinois, where three estimated coefficients change from significant to insignificant, although they remain quite small in magnitude. For the other crops in the four states, the sign, magnitude, and significance are similar to the main results.

8 Conclusion

This paper develops a cohesive analysis of adaptation, moral hazard, and selection on moral hazard in farmer decision-making in response to pre-plant precipitation. The focus on pre-plant precipitation as a natural experiment created an opportunity to study both cropping pattern and crop

³⁰ Alternatively, we could have included observations from 2008 as part of the treatment period (2009-2011) since the SURE program was enacted on May 22, 2008. We did not do this for two reasons. First, that date is appreciably after the normal planting time in this region. Second, the program was the most complex that USDA's Farm Service Agency had ever undertaken, such that it took some time to educate farmers about the program (Shields 2010).

insurance as part of an intermediate-run production frame. Prior to the SURE program, we find considerable heterogeneity in adaptation in cropping pattern, with farmers in Nebraska and North Dakota much more responsive than farmers in Illinois and Iowa. Adaptation is a form of self-insurance in the lexicon of Ehrlich and Becker (1972), whereby choice of cropping pattern reduces the size of a prospective loss without changing the probability of extreme precipitation outcomes (as an artifact of the natural experiment).

The SURE program's shock to insurance deductibles created an opportunity to study moral hazard in cropping pattern and selection on moral hazard in crop insurance coverage. With cropping pattern, the finding continues that farmers in Nebraska and North Dakota are more responsive than in Illinois and Iowa. Following the program's termination, farmers largely reverted to the pre-program cropping pattern, lending credibility to a causal interpretation of the program's impact. With insurance expenditures, the analysis covers Illinois and Iowa, where farmers increase (decrease) the rate of expenditure on corn when they increase (decrease) corn acres. They do so to a lesser degree with soybeans. This demonstrates a complementarity between risk taking in land use and insuring the risk in the crop insurance market. This complementarity constitutes a specific form of adverse selection in an insurance market. To our knowledge, ours is the first study of selection on moral hazard in an insurance market other than health insurance.

The use of high-resolution spatial data on land use and weather – with the PLSS section as the unit of analysis for land use – created new insight into the mechanisms of adaptation and moral hazard. Cropping pattern and agricultural land use have long been conjectured as an important mechanism of adaptation to weather risk and climate change, and here we provide strong empirical support for the conjecture. Further insight comes with the link to moral hazard as a hidden action: the relationship between cropping pattern and pre-plant precipitation is neither observed by the insurance agent nor recorded in the insurance contract. The spatial data translated this relationship from an unobservable to an observable for the econometric analysis. Lastly, the hidden action on cropping pattern under the SURE program translates into hidden information in the crop insurance market. Insurance companies, unwittingly, may be insuring different risks than those represented by farms' historical crop yields.

Evidence about farmers' adaptation to weather risk is essential for understanding the impact of climate change – after all, climate change is a change in weather risk. Agriculture is of particular importance due to its related impacts on economic growth, migration, and human conflict.³¹ Looking to the future, the major climate vulnerability for the Midwestern agricultural sector is risk of excess precipitation (Andresen et al., 2012). Widespread flooding events already occur over much of the region, and excessive rainfall events occur during the summer. While regional climate projections for end-of-century come with substantial uncertainty, the projections include increased precipitation, increased extreme precipitation, and little change or even a small decrease in summer precipitation (Winkler et al., 2012). Research is needed to investigate the effect of both existing and future

³¹ Related literature includes, for example, Dell et al. (2012) and Burke et al. (2015) on economic growth; Feng et al. (2010) and Hornbeck (2012) on migration; and Miguel et al. (2004) and Hsiang et al. (2013) on human conflict.

climate change on land-use change in the globally significant Midwest agricultural sector as well as in other major agricultural regions of the world.

A challenge for public policymakers is to design efficient risk-management policies in a setting of climate change. Policies need to encourage efficient adaptation and, thus, must account for perverse incentives for risk taking provided by government insurance programs. Although the SURE program ended in 2011, the Agricultural Act of 2014 reconstituted a similar program to cover shallow losses that are typically part of the insurance deductible. Again designed to supplement crop insurance, this program – the Agriculture Risk Coverage program – created incentives for risk-taking in crop choice and production. Research is needed on this new program following the approach developed here, as program payments in 2015 were quite large, \$5.9 billion (USDA 2017). More generally, research is needed to understand the interrelationship among adaptation, moral hazard, and selection on moral hazard across the range of sectors linked directly to weather and climate change.

References

- Al-Kaisi, Mahdi M., Roger W. Elmore, Jose G. Guzman, H. Mark Hanna, Chad E. Hart, Matthew J. Helmers, Erin W. Hodgson, Andrew W. Lenssen, Antonio P. Mallarino, Alison E. Robertson, and John E. Sawyer.** 2013. "Drought Impact on Crop Production and the Soil Environment: 2012 Experiences from Iowa." *Journal of Soil and Water Conservation*, 68: 19-24.
- Anderson, Soren, Chenguang Wang, and Jinhua Zhao.** 2012. "Let Them Eat Switchgrass? Modeling the Displacement of Existing Food Crops by New Bioenergy Feedstocks." Michigan State University, Department of Economics, Working Paper.
- Andresen, Jeff, Steve Hilberg, Ken Kunkel.** 2012. Historical Climate and Climate Trends in the Midwestern USA. In *U.S. National Climate Assessment Midwest Technical Input Report*. J. Winkler, J. Andresen, J. Hatfield, D. Bidwell, and D. Brown, coordinators.
http://glisa.msu.edu/docs/NCA/MTIT_Historical.pdf.
- Annan, Francis, and Wolfram Schlenker.** 2015. "Federal Crop Insurance and the Disincentive to Adapt to Extreme Heat." *American Economic Review*, 105(5): 262-266.
- Arrow, Kenneth.** 1963. "Uncertainty and the Welfare Economics of Health Care." *American Economic Review* 53(5): 941-973.
- Barreca, Alan, Karen Clay, Olivier Deschênes, Michael Greenstone, and Joseph S. Shapiro.** 2016. "Adapting to Climate Change: The Remarkable Decline in the US Temperature-Mortality Relationship over the Twentieth Century." *Journal of Political Economy*, 124(1): 105-159.
- Bekkerman, Anton, Vincent H. Smith, and Myles J. Watts.** 2012. "The SURE Program and Incentives for Crop Insurance Participation: A Theoretical and Empirical Analysis." *Agricultural Finance Review*, 72(3): 381-401.
- Brooks, Harold E.** 2013. "Severe Thunderstorms and Climate Change." *Atmospheric Research*, 123(1): 129-138.
- Brown, Jesslyn F., and Md Shahriar Pervez.** 2014. "Merging Remote Sensing Data and National Agricultural Statistics to Model Change in Irrigation Agriculture." *Agricultural Systems*, 127: 28-40.
- Burke, Marshall and Kyle Emerick.** 2016. "Adaptation to Climate Change: Evidence from US Agriculture." *American Economic Journal: Economic Policy*, 8(3): 106-140.
- Burke, Marshall, Solomon M. Hsiang, and Edward Miguel.** 2015. "Global Non-Linear Effect of Temperature on Economic Production." *Nature*, 527: 235-239.
- Chite, Ralph M.** 2008. "Crop Insurance and Disaster Assistance in the 2008 Farm Bill." Congressional Research Service, CRS Report RL34207.
- Chite, Ralph M.** 2010. "Emergency Funding for Agriculture: A Brief History of Supplemental Appropriations, FY1989-FY2009." Congressional Research Service, CRS Report RS31095.
- Christensen, J.H., K. Krishna Kumar, E. Aldrian, S.-I. An, I.F.A. Cavalcanti, M. de Castro, W. Dong, P. Goswami, A. Hall, J.K. Kanyanga, A. Kitoh, J. Kossin, N.-C. Lau, J. Renwick, D.B. Stephenson, S.-P. Xie and T. Zhou.** 2013. "Climate Phenomena and their Relevance for Future Regional Climate Change," in Stocker, T.F., D. Qin, G.-K. Plattner, M. Tignor, S.K. Allen, J.

- Boschung, A. Nauels, Y. Xia, V. Bex and P.M. Midgley, eds., *Climate Change 2013: The Physical Science Basis. Contribution of Working Group I to the Fifth Assessment Report of the Intergovernmental Panel on Climate Change*. Cambridge University Press.
- Cole, Shawn, Xavier Gine, and James Vickery.** 2014. “How Does Risk Management Influence Production Decisions? Evidence from a Field Experiment.” Harvard Business School Working Paper, No. 13-080.
- Congressional Budget Office,** “CBO March 2011 Baseline for CCC and FCIC,” March 18, 2011 (unpublished).
- Davis, Lucas W., and Paul J. Gertler.** 2015. “Contribution of Air Conditioning Adoption to Future Energy Use under Global Warming.” *Proceedings of the National Academy of Sciences*, 112(19): 5962-5967.
- Dell, Melissa, Benjamin F. Jones, and Benjamin A. Olken.** 2012. “Temperature Shocks and Economic Growth: Evidence from the Last Half Century.” *American Economic Journal: Macroeconomics*, 4(3): 66-95.
- Dell, Melissa, Benjamin F. Jones, and Benjamin A. Olken.** 2014. “What do We Learn from the Weather? The New Climate-Economy Literature.” *Journal of Economic Literature*, 52(3): 740-798.
- Deryugina, Tatyana, and Barrett Kirwan.** 2016. “Does the Samaritan’s Dilemma Matter? Evidence from U.S. Agriculture.” National Bureau of Economic Research, Working Paper 22845.
- Deschênes, Olivier, and Michael Greenstone.** 2007. “The Economic Impacts of Climate Change: Evidence from Agricultural Output and Random Fluctuations in Weather.” *American Economic Review*, 97(1): 354-385.
- Deschênes, Olivier, and Michael Greenstone.** 2011. “Climate Change, Mortality, and Adaptation: Evidence from Annual Fluctuations in Weather in the US.” *American Economic Journal: Applied Economics*, 3: 152-185.
- Donaldson, Dave, and Adam Storeygard.** 2016. “The View from Above: Applications of Satellite
- Du, Xiaodong, Hongli Feng, and David A. Hennessy.** 2017. “Rationality of Choices in Subsidized Crop Insurance Markets,” *American Journal of Agricultural Economics*, forthcoming.
- Ehrlich, Isaac, and Gary S. Becker.** 1972. “Market Insurance, Self-Insurance, and Self-Protection.” *Journal of Political Economy*, 80(4): 623-648.
- Einav, Liran, Amy Finkelstein, Stephen P. Ryan, Paul Schrimpf, and Mark R. Cullen.** 2013. “Selection on Moral Hazard in Health Insurance.” *American Economic Review*, 103(1): 178-219.
- Einav, Liran, Amy Finkelstein, and Jonathan Levin.** 2010. “Beyond Testing: Empirical Models of Insurance Markets,” *Annual Review of Economics* 2(1): 311-336.
- ESRI.** 2015. ArcGIS, version 10.1. Environmental Systems Research Institute, Redlands, CA, USA.
- Feng, Shuaizhang, Alan B. Krueger, and Michael Oppenheimer.** 2010. “Linkages among Climate Change, Crop Yields and Mexico-US Cross-Border Migration.” *Proceedings of the National Academy of Sciences of the United States*, 107(32): 14257-14262.

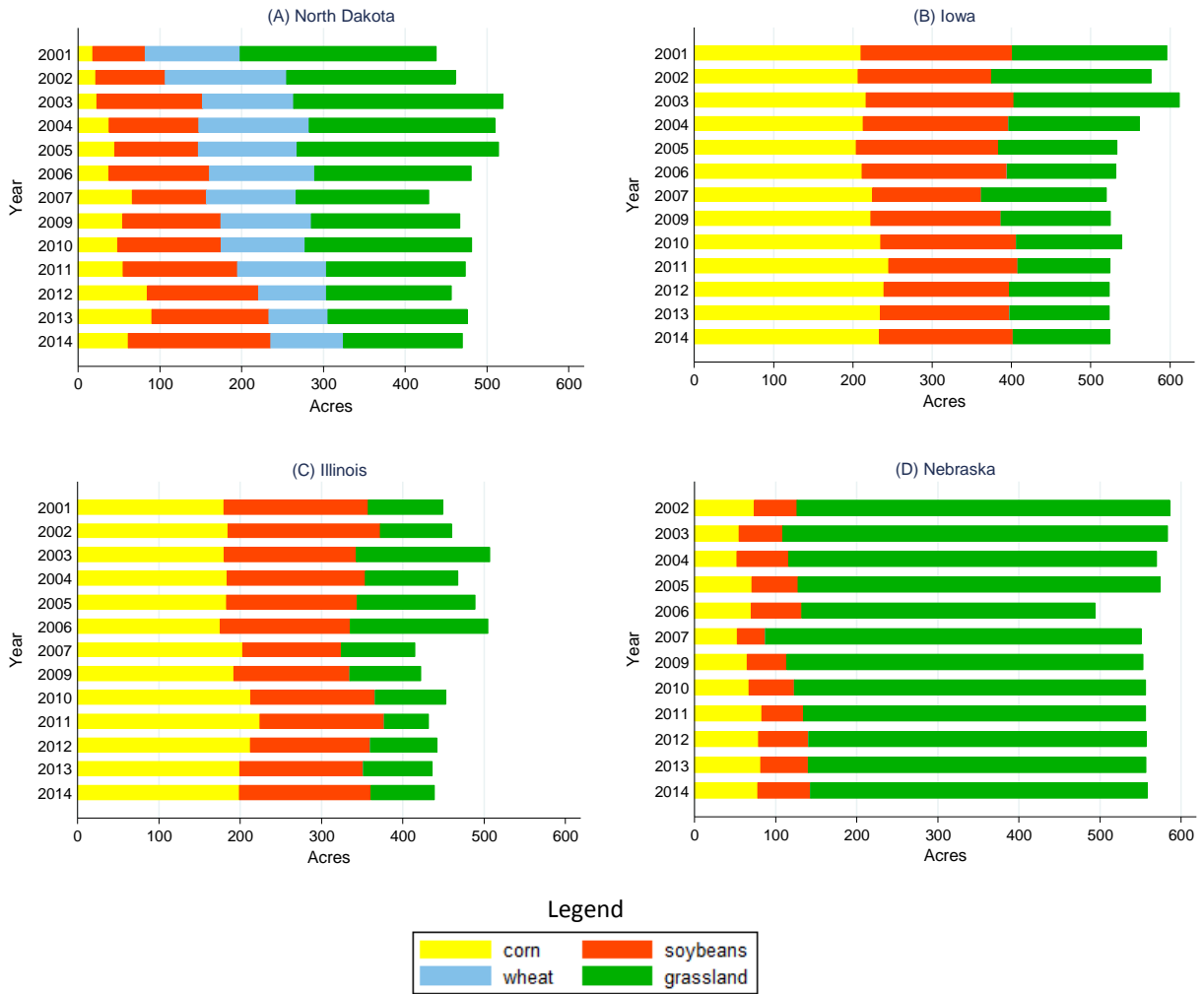
- Fezzi, Carlo, and Ian Bateman.** 2015. "The Impact of Climate Change on Agriculture: Nonlinear Effects and Aggregation Bias in Ricardian Models of Farmland Values." *Journal of the Association of Environmental and Resource Economics*, 2(1): 57-92.
- Finkelstein, Amy.** 2015. *Moral Hazard in Health Insurance* (New York: Columbia University Press).
- Fisher, Anthony C., W. Michael Hanemann, Michael J. Roberts, and Wolfram Schlenker.** 2012. "The Economic Impacts of Climate Change: Evidence from Agricultural Output and Random Fluctuations in Weather: Comment." *American Economic Review*, 102(7): 3749-3760.
- Glauber, Joseph W.** 2013. "The Growth of the Federal Crop Insurance Program," *American Journal of Agricultural Economics* 95(2): 482-488.
- Glauber, Joseph W. and Keith J. Collins.** 2002. "Crop Insurance, Disaster Assistance, and the Role of the Federal Government in Providing Catastrophic Risk Protection, *Agricultural Finance Review*, 62(2): 81-101.
- Haigh, Tonya, Eugene Takle, Jeffrey Andresen, Melissa Widhalm, J Stuart Carlton, and Jim Angel.** 2015. "Mapping the Decision Points and Climate Information Use of Agricultural Producers across the U.S. Corn Belt." *Climate Risk Management*, 7: 20-30.
- Holmes, Thomas J., and Sanghoon Lee.** 2012. "Economies of Density versus Natural Advantage: Crop Choice on the Back Forty." *Review of Economics and Statistics*, 94(1): 1-19.
- Hornbeck, Richard.** 2012. "The Enduring Impact of the American Dust Bowl: Short- and Long-run Adjustments to Environmental Catastrophe." *American Economic Review*, 102(4): 1477-1507.
- Hsiang, Solomon M., Marshall Burke, and Edward Miguel.** 2013. "Quantifying the Influence of Climate on Human Conflict." *Science*, 341: 1235367.
- Kala, Namrata.** 2014. "Ambiguity Aversion and Learning in a Changing World: The Potential Effects of Climate Change from Indian Agriculture." Yale University, Working Paper.
- Khanal, Aditya R., Ashok K. Mishra, and Madhusudan Bhattarai.** 2017. "Assessing the Impact of Weather Risk on Land Use Intensity: A Nonstationary and Dynamic Panel Modeling Approach." *Land Economics*, 93(1): 40-58.
- Lobell, David B., Michael J. Roberts, Wolfram Schlenker, Noah Braun, Bertis B. Little, Roderick M. Rejesus, and Graeme L. Hammer.** 2014. "Greater Sensitivity to Drought Accompanies Maize Yield Increase in the U.S. Midwest." *Science* 344(6183): 516-519.
- Mansur, Erin T., Robert Mendelsohn, and Wendy Morrison.** 2008. "Climate Change Adaptation: A Study of Fuel Choice and Consumption in the US Energy Sector." *Journal of Environmental Economics and Management*, 55: 175-193.
- McIntosh, Craig T. and Wolfram Schlenker.** 2006. Identifying Non-Linearities in Fixed Effects Models." University of California, San Diego, School of International Relations and Pacific Studies, Working Paper.
- Mearns, L.O., W. Easterling, C. Hays, and D. Marx.** 2001. "Comparison of Agricultural Impacts of Climate Change Calculated from High and Low Resolution Climate Change Scenarios: Part I. The Uncertainty Due to Spatial Scale." *Climatic Change*, 51: 131-172.

- Mendelsohn, Robert.** 2000. "Efficient Adaptation to Climate Change." *Climatic Change*, 45: 583-600.
- Mendelsohn, Robert, William D. Nordhaus, and Daigee Shaw.** 1994. "The Impact of Global Warming on Agriculture: A Ricardian Analysis." *American Economic Review*, 84(4): 753-771.
- Miguel, Edward, Shanker Satyanath, and Ernest Sergenti.** 2004. "Economic Shocks and Civil Conflict: An Instrumental Variables Approach." *Journal of Political Economy*, 112(4): 725-753.
- Miller, Benjamin M.** 2014. "Does Validity Fall from the Sky? Observant Farmers and the Endogeneity of Rainfall." University of California, San Diego, Department of Economics, Working Paper.
- Mobarak, Ahmed Mushfiq, and Mark R. Rosenzweig.** 2014. "Risk, Insurance and Wages in General Equilibrium." National Bureau of Economic Research, Working Paper 19811.
- Moore, Frances C., and David B. Lobell.** 2014. "Adaptation Potential of European Agriculture in Response to Climate Change," *Nature Climate Change* 4: 610-614.
- Neild, Ralph E. and James E. Newman.** 1990. "Growing Season Characteristics and Requirements in the Corn Belt." Purdue University, Cooperative Extension Service. National Corn Handbook-40.
- Quiring, Steven M. and Daria B. Kluver.** 2009. "Relationship between Winter/Spring Snowfall and Summer Precipitation in the Northern Great Plains of North America." *Journal of Hydrometeorology*, 10: 1203-1217.
- Roberts, Michael J., Erik O'Donoghue, and Nigel Key.** 2011. "Separating Moral Hazard from Adverse Selection: Evidence from the U.S. Federal Crop Insurance Program." University of Hawaii, Manoa, Department of Economics, Working Paper.
- Rosenzweig, Mark R. and Christopher Udry.** 2014. "Rainfall Forecasts, Weather, and Wages over the Agricultural Production Cycle." *American Economic Review: Papers & Proceedings*, 104(5): 278-283.
- Schlenker, Wolfram, W. Michael Hanemann, and Anthony C. Fisher.** 2005. "Will U.S. Agriculture Really Benefit from Global Warming? Accounting for Irrigation in the Hedonic Approach." *American Economic Review*, 95(1): 395-406.
- Schlenker, Wolfram, and Michael J. Roberts.** 2009. "Nonlinear Temperature Effects Indicate Severe Damages to U.S. Crop Yields under Climate Change." *Proceedings of the National Academy of Sciences of the United States*, 106(37): 15594-15598.
- Shields, Dennis A.** 2010. "A Whole-Farm Crop Disaster Program: Supplemental Revenue Assistance Payments (SURE)." Congressional Research Service, CRS Report RS40452.
- Shields, Dennis A.** 2015. "Federal Crop Insurance: Background." Congressional Research Service, CRS Report R40532.
- Shields, Dennis A. and Ralph M. Chite.** 2010. "Agricultural Disaster Assistance." Congressional Research Service, CRS Report RS21212.
- Smith, Vincent H., and Myles J. Watts.** 2010. "The New Standing Disaster Program: A SURE Invitation to Moral Hazard Behavior." *Applied Economic Perspectives and Policy*, 32(1): 154-169.
- Steduto, Pasquale, Theodore C. Hsiao, Elias Fereres, and Dirk Raes.** 2012. *Crop Yield Response to Water*. Rome, Italy: Food and Agriculture Organization of the United Nations.

- Urban, Daniel W., Michael J. Roberts, Wolfram Schlenker, and David B. Lobell.** 2015. “The Effect of Extremely Wet Planting Conditions on Maize and Soybean Yields.” *Climatic Change*, 130: 247-260.
- USDA, Farm Service Agency.** 2009. Supplemental Revenue Assistance Payments (SURE) Program: Backgrounder, https://www.fsa.usda.gov/Internet/FSA_File/sure_bkgder_122309.pdf, accessed April 14, 2017.
- USDA, Farm Service Agency.** 2017. 2015 ARC/PLC Payments, <https://www.fsa.usda.gov/Assets/USDA-FSA-Public/usdfiles/arc-plc/pdf/2015%20arc%20plc%20payments%20feb%202017.pdf>, accessed April 16, 2017.
- U.S. Government Accountability Office,** “USDA Farm Programs: Farmers Have Been Eligible for Multiple Programs and Further Efforts Could Help Prevent Duplicative Payments,” July 2014, GAO-14-428.
- Varian, Hal R.** 1992. *Microeconomic Analysis. Third Edition.* New York: W.W. Norton and Company.
- Weber, Jeremy, Nigel Key, and Erik O’Donoghue.** 2016. “Does Federal Crop Insurance Make Environmental Externalities from Agriculture Worse?” *Journal of the Association of Environmental and Resource Economists*, 3(3): 707-742.
- Winkler, Julie A., Raymond W. Arritt, Sara C. Pryor.** 2012. Climate Projections for the Midwest: Availability, Interpretation and Synthesis. In *U.S. National Climate Assessment Midwest Technical Input Report*. J. Winkler, J. Andresen, J. Hatfield, D. Bidwell, and D. Brown, coordinators. http://glisa.msu.edu/docs/NCA/MTIT_Future.pdf.

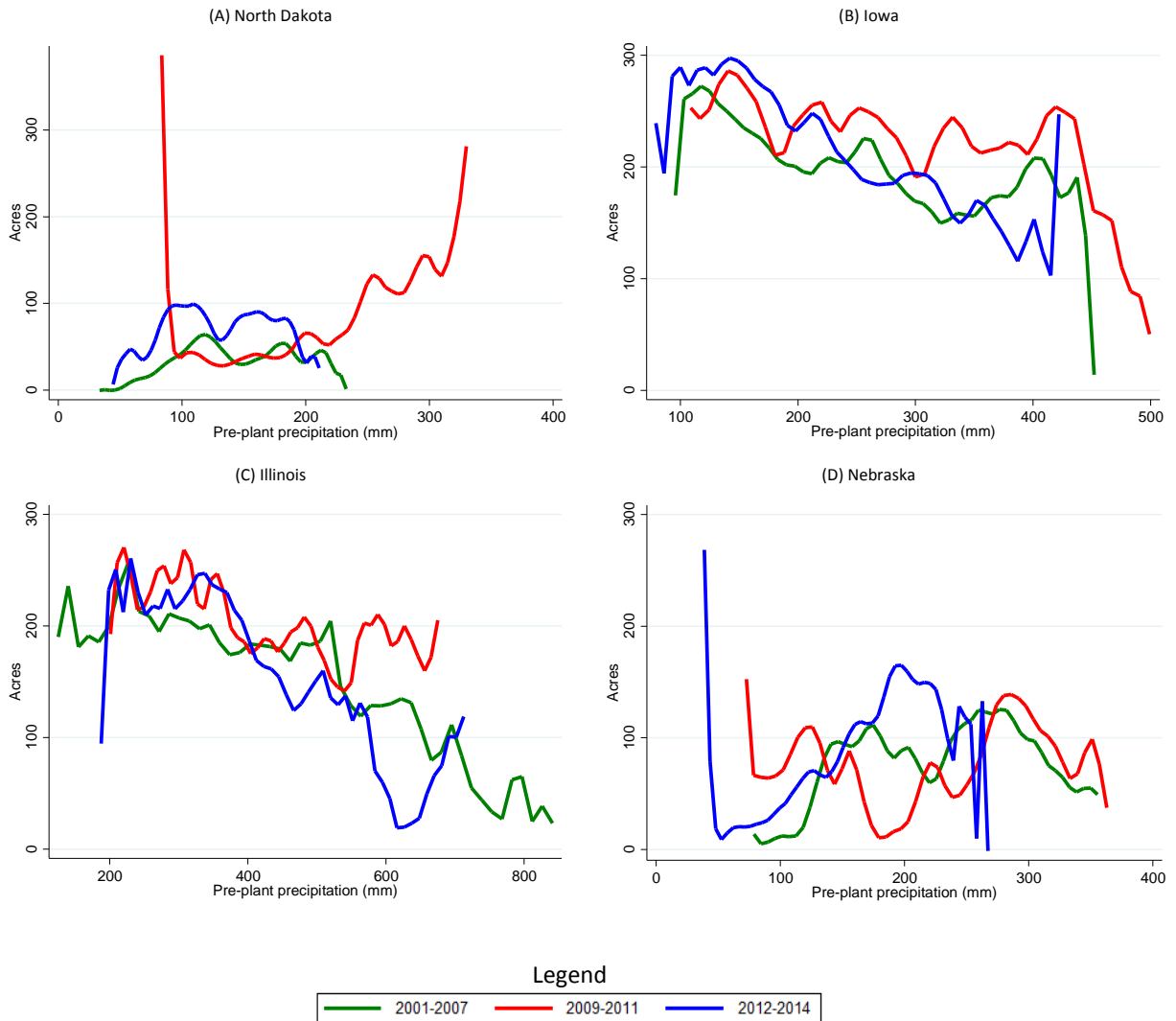
Figures

Figure 1: Average Cropland and Grassland Acres at the Section Level



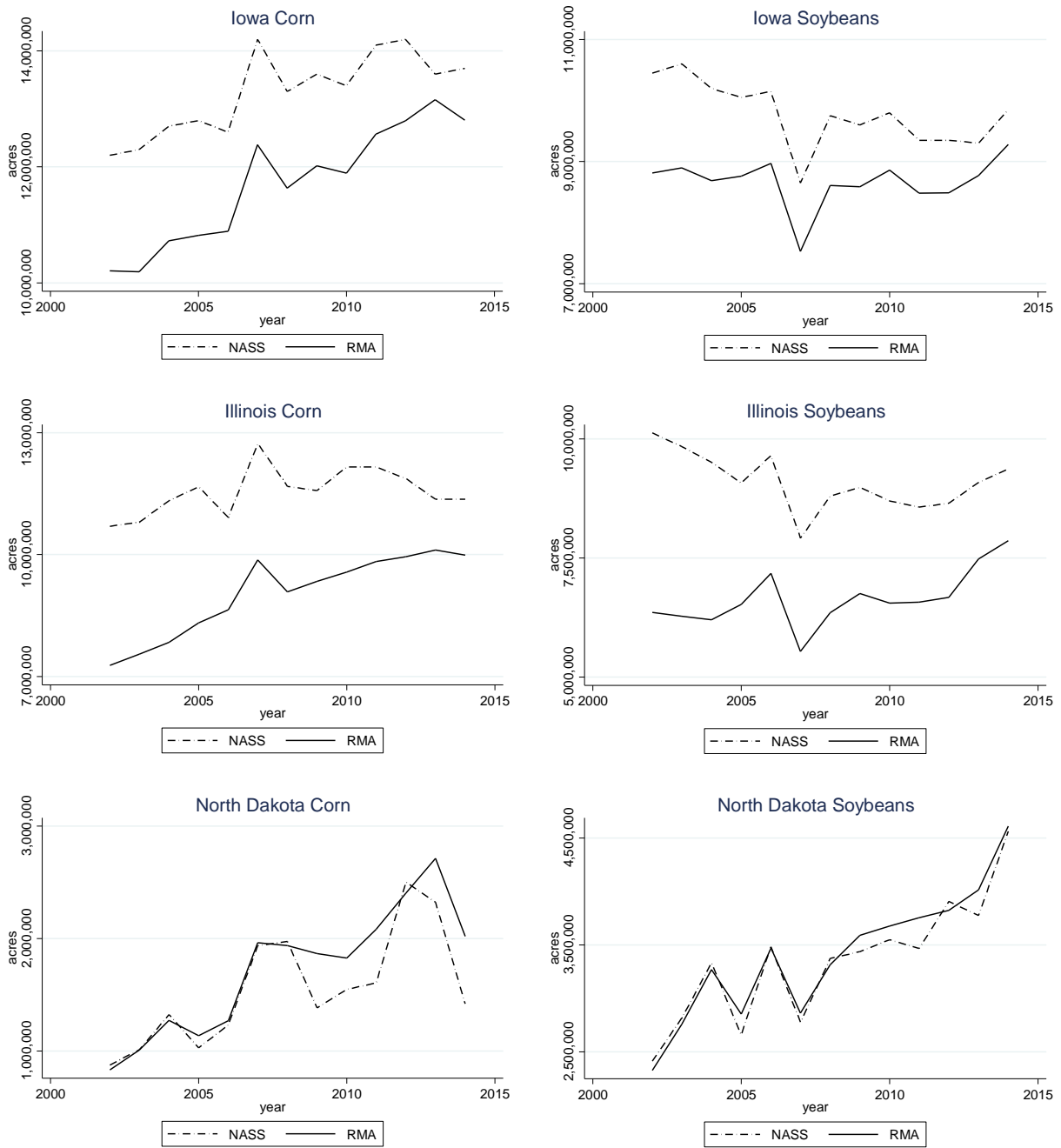
Notes: The graphs display acreages of major types of cropland use across years. Data at the section level are extracted from the Cropland Data Layer. Panels (A)-(D) use non-irrigated PLSS sections.

Figure 2: Relationship between Corn Acres and Pre-Plant Precipitation



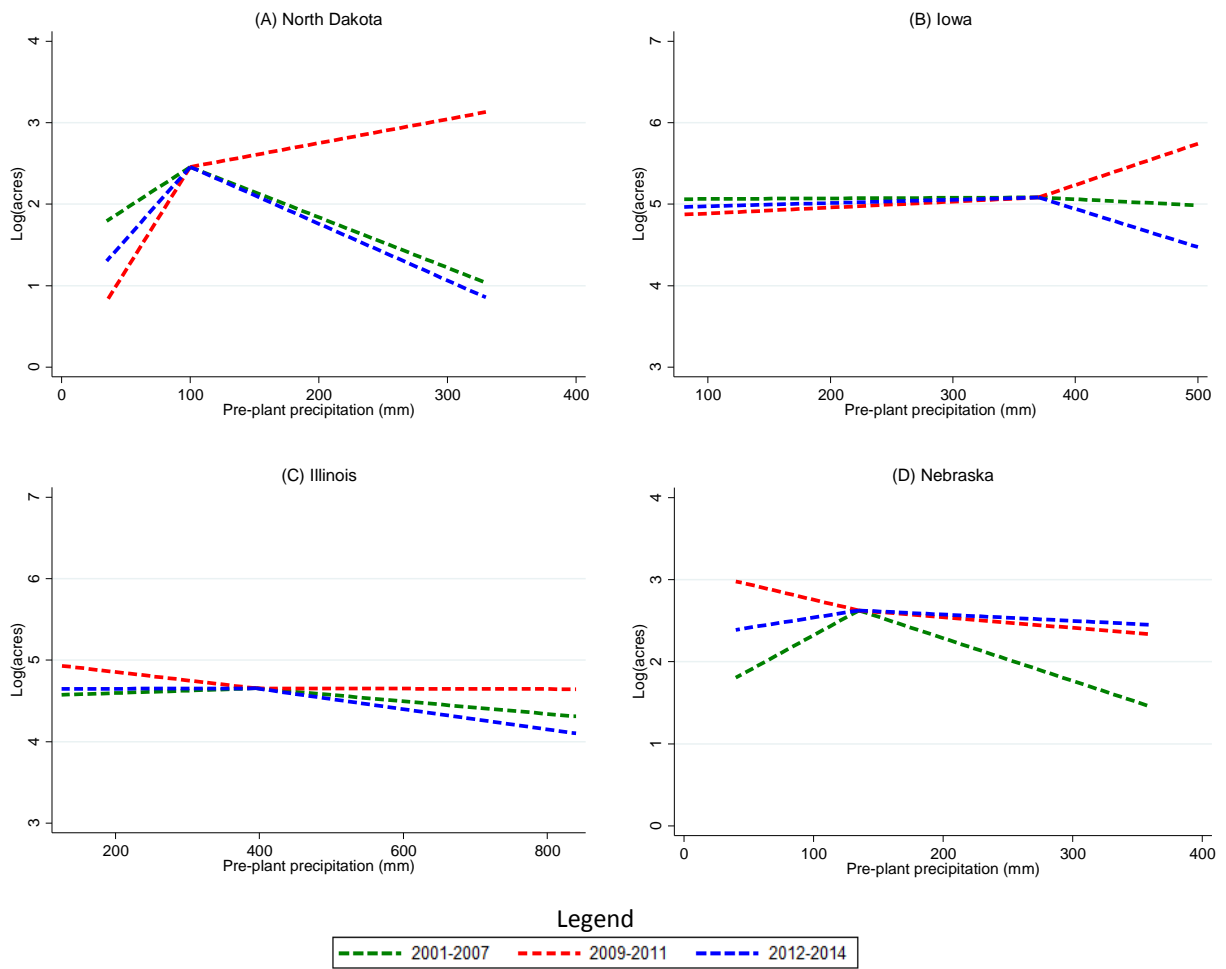
Notes: These plots are generated by Kernel-weighted local polynomial smoothing with the settings: kernel = epan2, degree = 3, and bandwidth = 20. Data at the section level are extracted from the Cropland Data Layer and Schlenker and Roberts (2009) weather data. Panels (A)-(D) use non-irrigated PLSS sections. Pre-plant precipitation is in millimeters.

Figure 3: Comparison of Planted Acres (NASS) and Insured Acres (RMA)



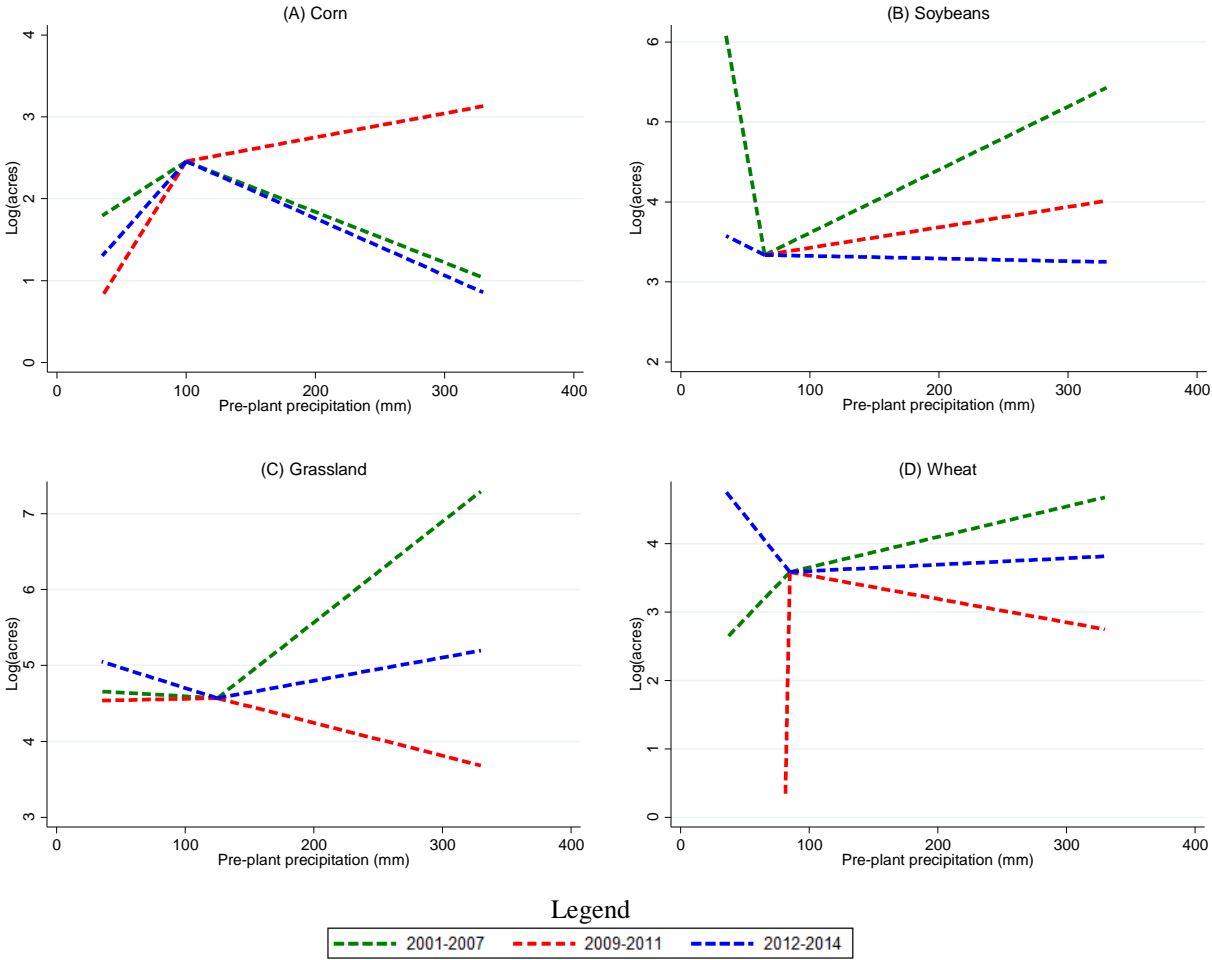
Notes: The graphs display planted acres and insured acres for corn and soybeans across years by state. Planted acres are data from the National Agricultural Statistics Service (NASS). Insured acres are data from the Risk Management Agency (RMA)'s Summary of Business Reports and Data. Data for North Dakota only include 28 counties east of the 100th meridian.

Figure 4: Predicted Effects of Pre-plant Precipitation on Corn Acres; by Policy Regime



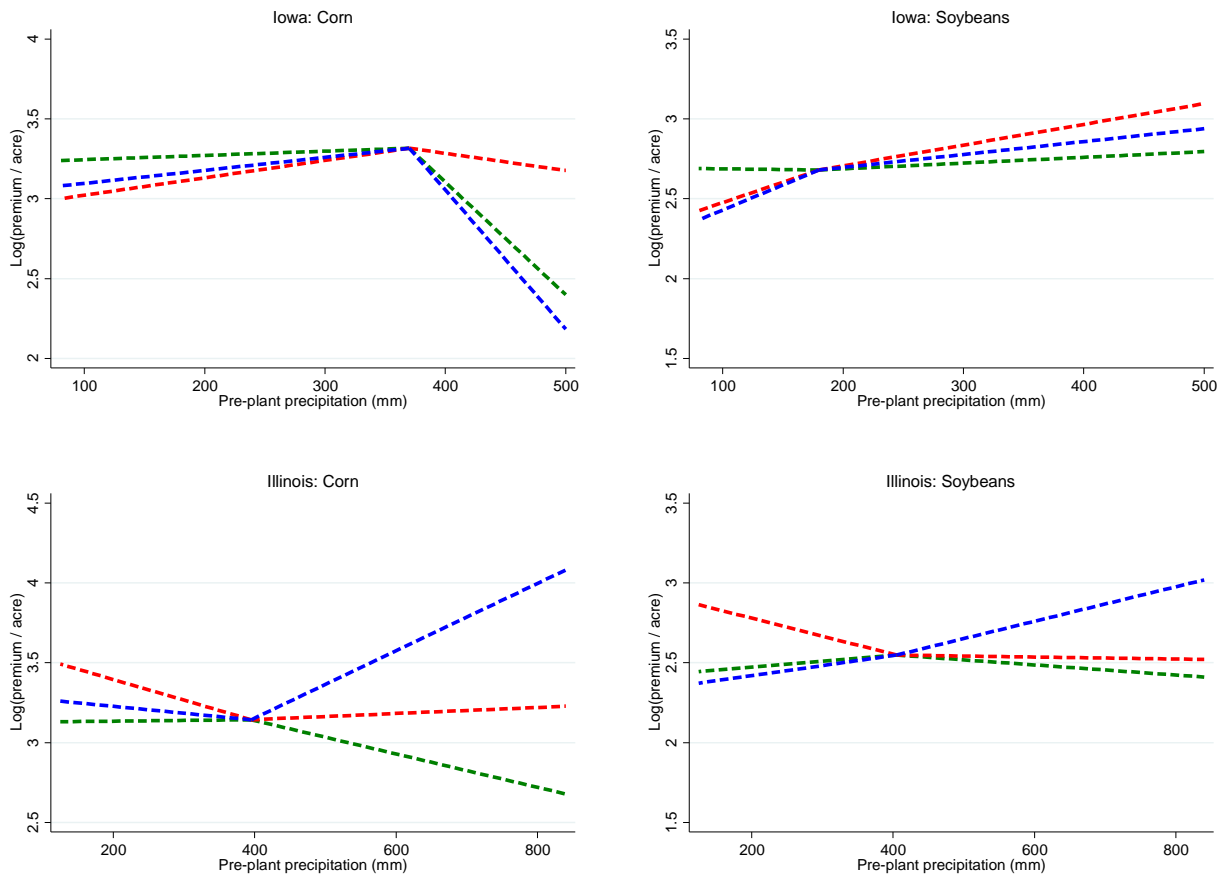
Notes: The graphs display the predicted means of log(corn acres) in the sections as a function of pre-plant precipitation. Panels (A)-(D) use non-irrigated PLSS sections. Pre-plant precipitation is in millimeters.

Figure 5: Predicted Effects of Pre-plant Precipitation on Cropland Acres in North Dakota; by Policy Regime



Notes: The graphs display the predicted means of log(crop acres) in the sections as a function of pre-plant precipitation. Pre-plant precipitation is in millimeters.

Figure 6: Predicted Effects of Pre-plant Precipitation on Crop Insurance Premiums; by Policy Regime



Notes: The graphs display the predicted means of log(premium / acre) in the counties as a function of pre-plant precipitation. Pre-plant precipitation is in millimeters.

Tables

Table 1: Summary Statistics

<i>Panel (A): Section-level variables for land-use regressions</i>							
	Unit	North Dakota			Iowa		
		Mean	Median	S.D.	Mean	Median	S.D.
Corn acreage ^a	acre	49.51	6.75	88.29	222.85	222.30	134.61
Soybeans acreage ^a	acre	118.74	71.10	132.80	170.63	162.23	116.05
Spring wheat acreage ^a	acre	110.49	72.13	120.68	0.10	0	1.79
Grassland acreage ^a	acre	196.52	149.85	172.58	151.82	111.83	131.21
Pre-plant precipitation ^b	mm	127.99	122.04	47.49	226.37	218.53	67.36
Pre-plant temperature ^b	Celsius	-6.19	-6.55	2.24	-0.65	-0.68	2.13
Planting precipitation ^b	mm	152.07	148.41	47.01	251.71	240.75	70.17
Planting temperature ^b	Celsius	7.12	7.43	2.21	11.04	11.03	1.85
Sections			27,151			50,020	
Observations			352,963			650,260	
<i>Panel (B): County-level variables for insurance demand regressions</i>							
	Unit	Iowa			Illinois ^f		
		Mean	Median	S.D.	Mean	Median	S.D.
Corn insurance premiums ^d	1,000 \$	3,982	3,361	2,625	3,567	2,589	3,223
Soybean insurance premiums ^d	1,000 \$	1,814	1,591	1,153	1,558	1,217	1,281
Corn premiums per acre ^e	\$/acre	31.05	29.44	17.10	29.79	28.79	17.93
Soybean premiums per acre ^e	\$/acre	18.94	16.94	10.31	17.16	15.67	11.15
Pre-plant precipitation ^b	mm	226.93	218.50	67.57	389.16	366.63	114.88
Pre-plant temperature ^b	Celsius	-0.36	-0.37	2.18	3.17	3.20	2.37
Planting precipitation ^b	mm	252.08	240.06	69.65	267.56	250.42	96.31
Planting temperature ^b	Celsius	11.67	11.64	1.89	14.04	14.10	2.03
Counties			99			102	
Observations			1,287			1,291	

Notes: ^aAuthors' calculations with the Cropland Data Layer, 2001-2014.

^bAuthors' calculations with Schlenker and Roberts (2009) weather data, 2001-2014.

^cAuthors' calculations with the Soil Survey Geographic (SSURGO) database. Larger values indicate poorer soil quality. See the Appendix for our calculation of weighted land capability at the section level.

^dAuthors' calculations with the Risk Management Agency's Summary of Business Reports and Data, 2001-2014.

^ePremiums divided by planted acres by crop. Data on planted acres are from the National Agricultural Statistics Service.

^fThe number of observations for corn in Illinois is 1,285. Summary statistics of pre-plant and planting precipitation and temperature for the sample of corn in Illinois are very similar to the values reported here using the 1,291 observations from the soybeans sample in Illinois.

Table 2: Land-use Estimation Results for Corn

	(1)	(2)	(3)	(4)
	North Dakota	Iowa	Illinois	Nebraska
Pre-plant precipitation below threshold	-0.010** (0.004)	-0.000 (0.000)	-0.000 (0.000)	-0.009*** (0.003)
Pre-plant precipitation below threshold × after 2008	-0.015 (0.041)	-0.001** (0.000)	0.001*** (0.000)	0.012*** (0.003)
Pre-plant precipitation below threshold × after 2011	0.008 (0.042)	0.000 (0.000)	-0.001** (0.000)	-0.006*** (0.002)
Pre-plant precipitation above threshold	-0.006*** (0.002)	-0.001 (0.003)	-0.001*** (0.000)	-0.005*** (0.001)
Pre-plant precipitation above threshold × after 2008	0.009*** (0.002)	0.006** (0.003)	0.001 (0.000)	0.004*** (0.001)
Pre-plant precipitation above threshold × after 2011	-0.010*** (0.003)	-0.010*** (0.003)	-0.001*** (0.000)	0.001 (0.001)
Pre-plant temperature	-0.389** (0.151)	-0.068*** (0.023)	0.013 (0.049)	-0.099* (0.056)
Pre-plant temperature squared	-0.019*** (0.005)	-0.004** (0.002)	0.001 (0.003)	-0.015** (0.007)
Planting precipitation	-0.004 (0.003)	0.001 (0.000)	-0.000 (0.001)	-0.004*** (0.001)
Planting precipitation squared	0.000 (0.000)	-0.000* (0.000)	0.000 (0.000)	0.000*** (0.000)
Planting temperature	-0.047 (0.132)	0.171*** (0.035)	-0.000 (0.062)	0.019 (0.087)
Planting temperature squared	0.004 (0.007)	-0.006*** (0.001)	0.004** (0.002)	0.002 (0.003)
Corn futures price	0.628*** (0.213)	0.192*** (0.034)	0.038 (0.032)	0.157*** (0.042)
Observations	352,963	650,260	589,836	173,112
R-squared	0.158	0.027	0.026	0.090
Number of PLSS sections	27,151	50,020	45,372	14,426
Threshold of pre-plant precipitation	100	370	395	135

Notes: Dependent variable in all regressions is the log of corn acres. Regressions estimated using piecewise linear functional form with the fixed effects estimator. Regressions include section fixed effects, year fixed effects, and a quadratic time trend that is common to the state. Regressions (1)-(4) use non-irrigated PLSS sections. Standard errors are clustered at the county level and shown in parentheses. Significance levels are indicated by *** 1%, ** 5%, * 10%.

Table 3: Land-use Estimation Results for North Dakota

	(1)	(2)	(3)	(4)
	Corn	Soybeans	Grassland	Wheat
Pre-plant precipitation below threshold	-0.010** (0.004)	0.092*** (0.031)	0.001 (0.002)	-0.020*** (0.004)
Pre-plant precipitation below threshold × after 2008	-0.015 (0.041)	- (-)	-0.001 (0.004)	-0.911*** (0.056)
Pre-plant precipitation below threshold × after 2011	0.008 (0.042)	-0.084** (0.037)	0.006 (0.005)	0.954*** (0.058)
Pre-plant precipitation above threshold	-0.006*** (0.002)	0.008*** (0.001)	0.013*** (0.002)	0.004** (0.002)
Pre-plant precipitation above threshold × after 2008	0.009*** (0.002)	-0.005*** (0.002)	-0.018*** (0.003)	-0.008*** (0.002)
Pre-plant precipitation above threshold × after 2011	-0.010*** (0.003)	-0.003 (0.002)	0.007** (0.003)	0.004** (0.002)
Pre-plant temperature	-0.389** (0.151)	0.521** (0.195)	-0.357*** (0.128)	0.542*** (0.079)
Pre-plant temperature squared	-0.019*** (0.005)	0.025*** (0.008)	-0.003 (0.003)	0.017*** (0.005)
Planting precipitation	-0.004 (0.003)	-0.001 (0.003)	0.005* (0.003)	0.003 (0.003)
Planting precipitation squared	0.000 (0.000)	0.000 (0.000)	-0.000* (0.000)	-0.000 (0.000)
Planting temperature	-0.047 (0.132)	0.014 (0.122)	-0.316*** (0.108)	-0.118 (0.116)
Planting temperature squared	0.004 (0.007)	-0.019*** (0.005)	0.020*** (0.003)	0.006 (0.005)
Crop-specific futures price	0.628*** (0.213)	-0.061 (0.065)	-0.219** (0.098)	0.069 (0.052)
Observations	352,963	352,963	352,963	352,963
R-squared	0.158	0.165	0.359	0.162
Number of PLSS sections	27,151	27,151	27,151	27,151
Threshold of pre-plant precipitation	100	65	125	85

Notes: Dependent variable in all regressions is the log of acres. Regressions estimated using piecewise linear functional form with the fixed effects estimator. Regressions include section fixed effects, year fixed effects, and a quadratic time trend. Standard errors are clustered at the county level and shown in parentheses. Significance levels are indicated by *** 1%, ** 5%, * 10%.

Table 4: Land-use Estimation Results for Grassland

	(1)	(2)	(3)	(4)
	North Dakota	Iowa	Illinois	Nebraska
Pre-plant precipitation below threshold	0.001 (0.002)	-0.002* (0.001)	0.002*** (0.000)	0.003* (0.001)
Pre-plant precipitation below threshold × after 2008	-0.001 (0.004)	0.005*** (0.001)	0.000 (0.001)	-0.004* (0.002)
Pre-plant precipitation below threshold × after 2011	0.006 (0.005)	0.002 (0.001)	-0.002** (0.001)	0.004*** (0.001)
Pre-plant precipitation above threshold	0.013*** (0.002)	-0.002*** (0.000)	0.001* (0.000)	0.003*** (0.000)
Pre-plant precipitation above threshold × after 2008	-0.018*** (0.003)	0.000 (0.001)	0.000 (0.000)	-0.002*** (0.001)
Pre-plant precipitation above threshold × after 2011	0.007** (0.003)	0.001*** (0.000)	-0.000 (0.001)	-0.001 (0.001)
Pre-plant temperature	-0.357*** (0.128)	0.141*** (0.027)	-0.057 (0.083)	0.024 (0.024)
Pre-plant temperature squared	-0.003 (0.003)	-0.005*** (0.001)	0.001 (0.003)	-0.000 (0.004)
Planting precipitation	0.005* (0.003)	0.000 (0.000)	-0.003*** (0.001)	-0.000 (0.000)
Planting precipitation squared	-0.000* (0.000)	0.000 (0.000)	0.000*** (0.000)	-0.000 (0.000)
Planting temperature	-0.316*** (0.108)	-0.458*** (0.051)	0.096 (0.075)	-0.095** (0.043)
Planting temperature squared	0.020*** (0.003)	0.010*** (0.001)	-0.005** (0.002)	-0.004*** (0.001)
Corn futures price	-0.219** (0.098)	0.048*** (0.015)	-0.549*** (0.099)	0.096*** (0.027)
Observations	352,963	650,260	589,836	173,112
R-squared	0.359	0.295	0.344	0.183
Number of PLSS sections	27,151	50,020	45,372	14,426
Threshold of pre-plant precipitation	125	170	435	140

Notes: Dependent variable in all regressions is the log of grassland acres. Regressions estimated using piecewise linear functional form with the fixed effects estimator. Regressions include section fixed effects, year fixed effects, and a quadratic time trend that is common to the state. Regressions (1)-(4) use non-irrigated PLSS sections. Standard errors are clustered at the county level and shown in parentheses. Significance levels are indicated by *** 1%, ** 5%, * 10%.

Table 5: Land-use Estimation Results for Soybeans

	(1)	(2)	(3)	(4)
	North Dakota	Iowa	Illinois	Nebraska
Pre-plant precipitation below threshold	0.092*** (0.031)	0.001 (0.001)	0.000* (0.000)	-0.006*** (0.001)
Pre-plant precipitation below threshold × after 2008	- (0.002)	-0.004*** (0.001)	-0.001* (0.000)	0.005** (0.002)
Pre-plant precipitation below threshold × after 2011	-0.084** (0.037)	-0.000 (0.001)	-0.000 (0.000)	0.000 (0.002)
Pre-plant precipitation above threshold	0.008*** (0.001)	0.001 (0.000)	-0.001*** (0.000)	-0.001 (0.001)
Pre-plant precipitation above threshold × after 2008	-0.005*** (0.002)	-0.002*** (0.000)	0.001** (0.000)	0.002** (0.001)
Pre-plant precipitation above threshold × after 2011	-0.003 (0.002)	0.002*** (0.001)	-0.002*** (0.000)	0.001 (0.001)
Pre-plant temperature	0.521** (0.195)	-0.004 (0.019)	-0.091*** (0.035)	-0.179*** (0.035)
Pre-plant temperature squared	0.025*** (0.008)	-0.006*** (0.001)	-0.005*** (0.002)	-0.017*** (0.005)
Planting precipitation	-0.001 (0.003)	-0.000 (0.001)	0.000 (0.001)	-0.003*** (0.001)
Planting precipitation squared	0.000 (0.000)	0.000 (0.000)	0.000 (0.000)	0.000*** (0.000)
Planting temperature	0.014 (0.122)	0.088** (0.039)	-0.127** (0.055)	0.080 (0.070)
Planting temperature squared	-0.019*** (0.005)	0.003*** (0.001)	0.009*** (0.002)	0.004* (0.002)
Soybeans futures price	-0.061 (0.065)	0.051** (0.025)	0.070*** (0.016)	-0.014 (0.015)
Observations	352,963	650,260	589,836	173,112
R-squared	0.165	0.073	0.083	0.079
Number of PLSS sections	27,151	50,020	45,372	14,426
Threshold of pre-plant precipitation	65	180	405	140

Notes: Dependent variable in all regressions is the log of soybeans acres. Regressions estimated using piecewise linear functional form with the fixed effects estimator. Regressions include section fixed effects, year fixed effects, and a quadratic time trend that is common to the state. Regressions (1)-(4) use non-irrigated PLSS sections. Standard errors are clustered at the county level and shown in parentheses. Significance levels are indicated by *** 1%, ** 5%, * 10%.

Table 6: Estimation Results for Crop Insurance Takeup

	(1)	(2)	(3)	(4)
	Iowa		Illinois	
	Corn	Soybeans	Corn	Soybeans
Pre-plant precipitation below threshold	-0.000 (0.000)	0.000 (0.000)	-0.000 (0.000)	-0.000** (0.000)
Pre-plant precipitation below threshold × after 2008	-0.001** (0.000)	-0.003*** (0.001)	0.001*** (0.000)	0.001*** (0.000)
Pre-plant precipitation below threshold × after 2011	0.000 (0.000)	-0.001 (0.001)	-0.001* (0.000)	-0.002*** (0.000)
Pre-plant precipitation above threshold	-0.007*** (0.001)	0.000** (0.000)	-0.001*** (0.000)	-0.000*** (0.000)
Pre-plant precipitation above threshold × after 2008	0.006*** (0.001)	0.001*** (0.000)	0.001*** (0.000)	0.000 (0.000)
Pre-plant precipitation above threshold × after 2011	-0.008*** (0.003)	-0.000 (0.000)	0.002*** (0.001)	0.001** (0.000)
Pre-plant temperature	-0.038** (0.015)	-0.101*** (0.018)	0.014 (0.035)	-0.060* (0.032)
Pre-plant temperature squared	-0.004*** (0.001)	-0.005*** (0.001)	-0.005*** (0.001)	-0.006*** (0.001)
Planting precipitation	0.001*** (0.000)	0.001*** (0.000)	0.001* (0.000)	0.000 (0.000)
Planting precipitation squared	-0.000** (0.000)	-0.000*** (0.000)	0.000 (0.000)	0.000 (0.000)
Planting temperature	-0.008 (0.026)	0.032 (0.024)	0.150*** (0.038)	0.161*** (0.054)
Planting temperature squared	0.001 (0.001)	-0.001 (0.001)	-0.004*** (0.001)	-0.003** (0.002)
Corn/soybeans futures price	0.334*** (0.030)	0.201*** (0.015)	0.129*** (0.026)	0.115*** (0.012)
Observations	1,287	1,287	1,285	1,291
R-squared	0.956	0.966	0.915	0.936
Number of counties	99	99	102	102
Threshold of pre-plant precipitation	370	180	395	405

Notes: Dependent variable in all regressions is the log of crop insurance premiums per planted acre. Regressions estimated using piecewise linear functional form with the fixed effects estimator. Regressions include county fixed effects, year fixed effects, and a quadratic time trend. Standard errors are clustered at the county level and shown in parentheses. Significance levels are indicated by *** 1%, ** 5%, * 10%.

Table 7: Robustness Checks for Corn across States

	North Dakota			Iowa			Illinois			Nebraska		
	(1a)	(1b)	(1c)	(2a)	(2b)	(2c)	(3a)	(3b)	(3c)	(4a)	(4b)	(4c)
Pre-plant precipitation below threshold	-0.010** (0.004)	-0.009** (0.003)	-0.010** (0.004)	-0.000 (0.000)	0.000* (0.000)	-0.000 (0.000)	-0.000 (0.000)	-0.000 (0.000)	-0.000 (0.000)	-0.009*** (0.003)	-0.007** (0.003)	-0.009*** (0.003)
Pre-plant precipitation below threshold × after 2008	-0.015 (0.041)	-0.016 (0.040)	-0.011 (0.039)	-0.001** (0.000)	-0.001*** (0.000)	-0.001** (0.000)	0.001*** (0.000)	0.001** (0.000)	0.001 (0.000)	0.012*** (0.003)	0.010*** (0.003)	0.012*** (0.003)
Pre-plant precipitation below threshold × after 2011	0.008 (0.042)	0.008 (0.042)	0.004 (0.040)	0.000 (0.000)	0.000 (0.000)	0.000 (0.000)	-0.001** (0.000)	-0.001* (0.000)	-0.000 (0.000)	-0.006*** (0.002)	-0.005*** (0.002)	-0.006** (0.002)
Pre-plant precipitation above threshold	-0.006*** (0.002)	-0.006*** (0.002)	-0.005 (0.004)	-0.001 (0.003)	0.000 (0.001)	-0.001 (0.003)	-0.001*** (0.000)	-0.001** (0.000)	-0.000 (0.000)	-0.005*** (0.001)	-0.004*** (0.001)	-0.005*** (0.001)
Pre-plant precipitation above threshold × after 2008	0.009*** (0.002)	0.009*** (0.002)	0.008*** (0.002)	0.006** (0.003)	0.004*** (0.001)	0.006* (0.003)	0.001 (0.000)	0.001* (0.000)	0.001 (0.001)	0.004*** (0.001)	0.002*** (0.001)	0.004*** (0.001)
Pre-plant precipitation above threshold × after 2011	-0.010*** (0.003)	-0.010*** (0.003)	-0.010*** (0.003)	-0.010*** (0.003)	-0.009*** (0.003)	-0.010*** (0.003)	-0.001*** (0.000)	-0.001*** (0.000)	-0.001*** (0.001)	0.000 (0.001)	0.001 (0.001)	0.000 (0.001)
Pre-plant temperature	-0.388** (0.152)	-0.415*** (0.139)	-0.414*** (0.140)	-0.068*** (0.023)	-0.058** (0.023)	-0.103*** (0.030)	0.014 (0.049)	0.014 (0.049)	0.051 (0.046)	-0.102* (0.056)	-0.114** (0.055)	-0.046 (0.084)
Pre-plant temperature squared	-0.019*** (0.005)	-0.020*** (0.005)	-0.015** (0.006)	-0.004** (0.002)	-0.002 (0.002)	-0.004** (0.002)	0.001 (0.003)	0.001 (0.003)	0.004 (0.003)	-0.016** (0.007)	-0.013* (0.007)	-0.017** (0.007)
Planting precipitation	-0.004 (0.003)	-0.003 (0.002)	-0.006* (0.003)	0.001 (0.000)	0.000 (0.000)	0.000 (0.000)	-0.000 (0.001)	0.000 (0.001)	-0.000 (0.001)	-0.004*** (0.001)	-0.004*** (0.001)	-0.004*** (0.001)
Planting precipitation squared	0.000 (0.000)	0.000 (0.000)	0.000 (0.000)	-0.000* (0.000)	-0.000 (0.000)	-0.000 (0.000)	0.000 (0.000)	-0.000 (0.000)	0.000 (0.000)	0.000*** (0.000)	0.000*** (0.000)	0.000*** (0.000)
Planting temperature	-0.049 (0.133)	-0.048 (0.126)	-0.011 (0.131)	0.171*** (0.035)	0.125*** (0.030)	0.194*** (0.036)	-0.001 (0.062)	0.031 (0.064)	0.009 (0.062)	0.017 (0.087)	0.098 (0.075)	-0.054 (0.123)
Planting temperature squared	0.004 (0.007)	0.004 (0.007)	0.003 (0.007)	-0.006*** (0.001)	-0.004*** (0.001)	-0.006*** (0.001)	0.004** (0.002)	0.003* (0.002)	0.004** (0.002)	0.002 (0.003)	-0.001 (0.002)	0.003 (0.004)
Corn futures price	0.628*** (0.213)	-0.236 (0.172)	0.330 (0.209)	0.192*** (0.034)	0.018 (0.026)	0.104*** (0.035)	0.038 (0.032)	0.009 (0.039)	0.088*** (0.031)	0.157*** (0.043)	0.164** (0.070)	0.232*** (0.031)
Observations	352,235	380,114	352,963	650,104	700,280	650,260	588,068	635,208	589,836	172,056	187,538	173,112
R-squared	0.158	0.147	0.159	0.027	0.027	0.027	0.026	0.033	0.030	0.091	0.086	0.094
Number of PLSS sections	27,095	27,151	27,151	50,008	50,020	50,020	45,236	45,372	45,372	14,338	14,426	14,426
Threshold of pre-plant precipitation	100	100	100	370	370	370	395	395	395	135	135	135

Notes: Dependent variable in all regressions is the log of acres. Regressions estimated using piecewise linear functional form with the fixed effects estimator. Regressions include section fixed effects, year fixed effects, and a quadratic time trend that is common to the state. Columns with (a) drop the sections having zero acres of the crop planted over our sample period. Columns with (b) include observations in 2008 as a control year. Columns with (c) include potential endogenous variables, including aggregated precipitation and average temperature in the prior growing season from April to September, and the interaction term between pre-plant precipitation and temperature. Standard errors are clustered at the county level and shown in parentheses. Significance levels are indicated by *** 1%, ** 5%, * 10%.

Appendix **(For Online Publication)**

In the appendix, we (i) provide additional detail on the data and variables in the analysis; (ii) analyze the residual variation in the section-level pre-plant precipitation variables after controlling for fixed effects; and (iii) report on the variables and output from the yield regressions for corn and soybeans.

Data

Section 3 of the main text provides the primary description of the data and variables. We provide supplemental details here.

PLSS sections. The Public Land Survey System imposed a grid of squares on the acquired lands of the early United States. The Fifth Principal Meridian was planned in 1815 to govern the grid for Illinois, Iowa, Nebraska, and North Dakota. We use a GIS data layer for the PLSS (ESRI 2015). The 1-by-1 mile section grid scale facilitates comparison of grids across years when the grid spacing of the cropland data changed from 56 m to 30 m in 2006. The grid scale also makes tractable the analysis of local precipitation impacts.

Land use. The Cropland Data Layer (CDL) program provides raster-formatted geospatial data on crops planted and other non-agricultural types of land cover for the United States. Each grid corresponds to a specific crop or type of land cover. The CDL's land cover classifications include over 50 crops and come with a spatial resolution of 30 m or 56 m. Our study area covers the four states that have a relatively long panel of annual CDL data in the Midwest. We intersect CDL data with the PLSS sections using the Python language for ArcGIS, and calculate acres for each crop planted within a section as an aggregation of the CDL grids within the section. Since CDL data before 2006 are less reliable (with the spatial resolution of 56 m), we focus on crops with high classification accuracy, ranging from 85% to 95%, including corn, soybeans, and spring wheat. In addition, since CDL data are less reliable for differentiating among several land cover types – including alfalfa, fallow/idle cropland, unmanaged grassland, pasture, and hay – these land covers are combined into a single *grassland* land cover category.

Weather. The weather data are an updated version of those used in Schlenker and Roberts (2009), which consists of daily precipitation and maximum and minimum temperatures at 4-by-4 kilometer grid cells for the entire United States for 1950-2014. We compute weather variables by starting at the cell level and then aggregating to either the section level or the county level. These weather data cells are intersected with the PLSS sections using the Python language for ArcGIS.

Soil quality. The soil-quality data provide a useful perspective on the intrinsic quality of cropland across the states of Illinois, Iowa, Nebraska, and North Dakota. We do not describe these data in the main text as they are not used in the regressions (instead relying on section fixed effects to control for soil quality). Nevertheless, they help to explain the greater diversity of cropping pattern in Nebraska and North Dakota relative to Illinois and Iowa.

The soil-quality data are from USDA’s Soil Survey Geographic (SSURGO) database. This spatially high-resolution database provides 10-by-10 meter grid cells for the entire United States. We extract data on land capability classification and calculate area-weighted average land capability for each section. Land capability classification shows the suitability of soils for most kinds of field crops. The criteria used in grouping the soils involve the landscape location, slope of the field, depth, texture, reactivity of the soil, erosion hazard, wetness, rooting-zone limitations, and climate, which are associated with both soil water-holding capacity and farmers’ cropping pattern decisions. Class 1 and Class 2 are defined as *good quality soils* for cropping. Class 3 and Class 4 are *moderate quality soils* that have severe limitations for cropping and/or require careful conservation practices. *Poor quality soils* in Class 6, Class 7, and Class 8 have very severe limitations that make them generally unsuitable for cultivation.

Figure A1 displays the distribution of weighted land capability for our sample in the four states. Overall, Illinois and Iowa have a large share of good quality and moderate quality soils and only a small amount of poor quality soils. North Dakota has a large share of moderate quality soils, but no good quality soils with weighted land capability less than 2. Nebraska similarly does not have any good quality soils with weighted land capability less than 2, and it has a substantial amount of poor quality soils.

The summary statistics for weighted land capability at the section level follow.

	<u>Mean</u>	<u>Median</u>	<u>S.D.</u>
Illinois	2.77	2.61	1.01
Iowa	2.74	2.59	0.83
Nebraska	5.52	5.45	1.15
North Dakota	3.03	2.68	1.05

These numbers reinforce the more detailed data in Figure A1. Illinois and Iowa have the highest quality soil for their cropland, followed closely by North Dakota. Nebraska’s cropland has the poorest quality soil of these four states by a substantial margin.

Variation in Pre-plant Precipitation: Do fixed effects absorb a significant amount of the variation in the section-level variables?

Our empirical approach relies on interannual variation in pre-plant precipitation after controlling for section and year fixed effects. A concern with this approach is that the fixed effects can absorb a significant amount of the variation in the precipitation variables. Following Fisher et al. (2012), we explore how much of the variation is absorbed by the fixed effects. Table A1 summarizes regressions of pre-plant precipitation against three sets of fixed effects: an intercept, section fixed effects, and section and year fixed effects. The table reports three items: R^2 ; the standard deviation of the residual pre-plant precipitation variation not absorbed by the fixed effects in millimeter equivalent; and the fraction of residuals with an absolute value larger than 10 mm.

In North Dakota, for example, the standard deviation of pre-plant precipitation is 47.5 mm without fixed effects. After including section and year fixed effects, the remaining variation of 21.1 mm

provides enough residual variation to implement our semi-parametric approach. Of note, the same conclusion applies in the other three states, i.e., the variation in the pre-plant precipitation variables remains substantial after accounting for fixed effects.

Yield Regressions: Summary Statistics and Output

Section 4 of the main text reports on the yield regressions for corn and soybeans. The purpose of the yield regressions is to establish that pre-plant precipitation affects crop yield, thus making pre-plant precipitation a valid factor in farmer decision-making. As reported in the main text, the regressions accomplish this purpose.

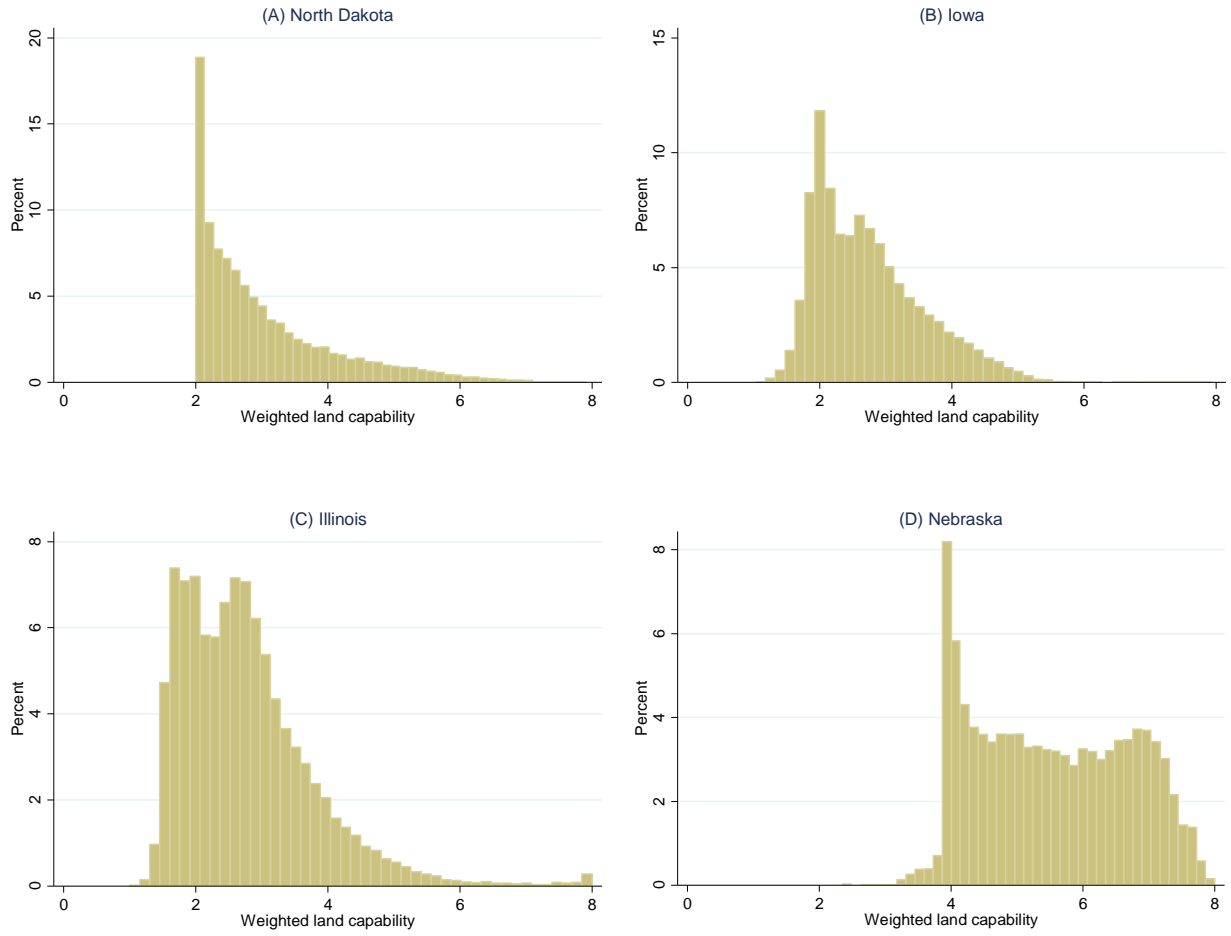
Since the yield regressions are only preliminary to the land-use and insurance takeup regressions, we report in the appendix on the summary statistics of the variables for the yield regressions (Table A2) and the regression results (Table A3). The data are county-level panel data for 2001-2014 that are pooled for Illinois, Iowa, and eastern North Dakota. Corn yield has 2,903 observations and soybean yield has 2,931 observations, both over 229 counties. The regressors primarily are weather variables. Precipitation and temperature variables are developed for each of the three phases of the crop production cycle: pre-planting season, planting season, and growing season. In addition, a variable is developed for the daily-average maximum temperature in July. These variables are guided, in part, by prior research on crop yield; Schlenker and Roberts (2009) study the effect of growing-season temperature on crop yield, and Urban et al. (2015) study the effect of extremely wet planting conditions on crop yield.

The main text reports on the results, which show small but (in most cases) statistically significant effects of pre-plant precipitation. The SURE treatment effects, in particular, are positive and significant in three of four cases (Table A3). These are contrary to expectations; in a separate paper, we are investigating whether farmers planted corn and soybeans on land with higher quality soils during the SURE program as a possible mechanism to explain these results. Figure A2 graphs the piecewise linear functions for these two regressions.

The other weather variables, in large part, exert the expected effects on yield, as informed by the prior research (Schlenker and Roberts 2009; Urban et al. 2015). Planting-season precipitation has a significant, negative effect on corn yield. Both precipitation and temperature during the growing season (June-August) have positive, significant effects on corn yields and soybean yields. All four response functions are quadratic, with negative, small in absolute value, and significant estimated coefficients on the squared terms of the growing-season weather variables in both the corn and soybean regressions. High maximum temperatures in July have a negative effect on corn yield.

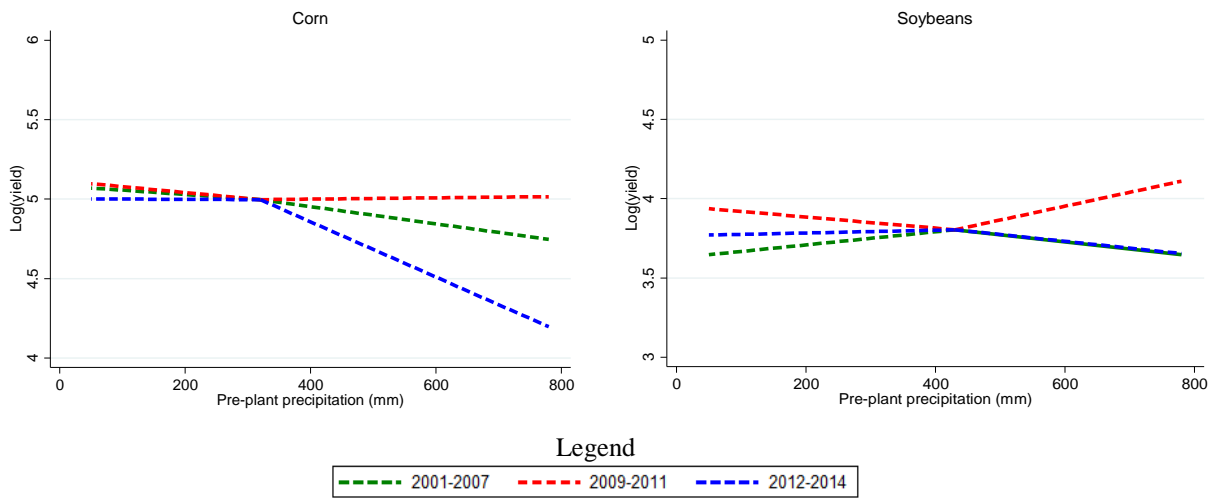
Appendix Figures

Figure A1: Land Capability Class



Notes: The histograms display the percentage of sections belonging to a class of weighted land capability. Weighted land capability is calculated by the authors with the Soil Survey Geographic (SSURGO) database. Larger values indicate poorer soil quality. Panels (A)-(D) use rainfed (non-irrigated) PLSS sections.

Figure A2: Predicted Effects of Pre-plant Precipitation on Crop Yield; by Policy Regime



Notes: The graphs display the predicted means of log(yield) in the counties in the states of Illinois, Iowa, and North Dakota (east of the 100th meridian) as a function of pre-plant precipitation. Pre-plant precipitation is in millimeters.

Appendix Tables

Table A1: Variation of Pre-Plant Precipitation under Various Sets of Fixed Effects

		(1)	(2)	(3)
		R^2	σ_e	$ e > 10\text{mm}$
North Dakota	No FE	-	47.5 mm	83.8%
	Section FE	0.116	44.7 mm	86.4%
	Section FE + year FE	0.802	21.1 mm	57.8%
Iowa	No FE		67.4 mm	91.7 %
	Section FE	0.270	57.5 mm	87.0 %
	Section FE + year FE	0.832	27.6 mm	73.4 %
Illinois	No FE		108.6 mm	93.2 %
	Section FE	0.419	82.8 mm	89.7 %
	Section FE + year FE	0.784	50.4 mm	83.6 %
Nebraska	No FE		52.1 mm	85.9 %
	Section FE	0.177	47.3 mm	83.1 %
	Section FE + year FE	0.779	24.5 mm	67.2 %

Notes: This table summarizes regressions of section-level pre-plant precipitation on various sets of fixed effects to assess how much variation is absorbed by the fixed effects (FE). Column (1) reports the R^2 s of the regressions. Column (2) reports the standard deviation of the residuals (remaining pre-plant precipitation variation) in millimeters. Column (3) reports the fraction of the observations having a residual larger than 10 mm.

Table A2: Summary Statistics of Variables for Yield Regressions

	Unit	Corn		Soybeans	
		Mean	S.D.	Mean	S.D.
Yield	bushels/acre	151.57	32.75	44.55	9.27
Pre-plant precipitation, accumulated	mm	287.36	131.73	286.38	131.64
Pre-plant temperature, daily average	Celsius	0.59	3.60	0.53	3.68
Planting-season precipitation, daily average	mm	3.57	1.35	3.85	1.38
Planting-season temperature, daily average	Celsius	13.70	2.03	17.41	2.35
June-August precipitation, monthly average	mm	102.38	36.30	102.11	36.30
June-August temperature, monthly average	Celsius	24.79	1.84	24.77	1.87
Maximum temperature in July, daily average	Celsius	29.52	2.31	29.50	2.34
Counties		229		229	
Observations		2,903		2,931	

Notes: Data represent three states: Illinois, Iowa, and the counties east of the 100th meridian in North Dakota. Yield variables are authors' calculations using data from National Agricultural Statistics Service. Weather variables are authors' calculations using data from Schlenker and Roberts (2009).

Table A3: Regression Estimates of Crop Yield

	Corn		Soybeans	
Pre-plant precipitation below threshold	0.0003***	(0.0001)	-0.0004***	(0.0001)
Pre-plant precipitation below threshold × after 2008	0.0001	(0.0002)	0.0008***	(0.0001)
Pre-plant precipitation below threshold × after 2011	-0.0004*	(0.0002)	-0.0004***	(0.0001)
Pre-plant precipitation above threshold	-0.0005***	(0.0001)	-0.0004***	(0.0001)
Pre-plant precipitation above threshold × after 2008	0.0006***	(0.0001)	0.0013***	(0.0002)
Pre-plant precipitation above threshold × after 2011	-0.0018***	(0.0003)	-0.0013***	(0.0002)
Pre-plant temperature	0.0858***	(0.0101)	0.0188***	(0.0067)
Planting-season precipitation	-0.0067**	(0.0028)	0.0004	(0.0024)
Planting-season temperature	-0.0011	(0.0084)	0.0082	(0.0075)
June-August precipitation	0.0049***	(0.0004)	0.0046***	(0.0003)
June-August precipitation, squared	-0.0000***	(0.0000)	-0.0000***	(0.0000)
June-August temperature	0.6237***	(0.0708)	0.5150***	(0.0512)
June-August temperature, squared	-0.0130***	(0.0014)	-0.0113***	(0.0010)
Maximum temperature in July	-0.1007***	(0.0084)	-0.0058	(0.0073)
Observations	2,903		2,931	
R-squared	0.741		0.712	
Number of counties	229		229	
Threshold of pre-plant precipitation	320		430	

Notes: Dependent variable in all regressions is the log of crop yield. Regressions estimated using piecewise linear functional form with the fixed effects estimator. Regressions include state-by-year fixed effects, county fixed effects, year fixed effects, and a quadratic time trend. Standard errors are clustered at the county level and shown in parentheses. Significance levels are indicated by *** 1%, ** 5%, * 10%.