

NBER WORKING PAPER SERIES

OPTIMAL REGULATION OF FINANCIAL INTERMEDIARIES

Sebastian Di Tella

Working Paper 23586

<http://www.nber.org/papers/w23586>

NATIONAL BUREAU OF ECONOMIC RESEARCH

1050 Massachusetts Avenue

Cambridge, MA 02138

July 2017

I'd like to thank Andres Schneider, Andy Skrzypacz, Peter DeMarzo, Pablo Kurlat, Yuliy Sannikov, Bob Hall, Martin Schneider, Monika Piazzesi, V.V. Chari, Chad Jones, Chris Tonetti, Florian Scheuer, Eric Madsen, Alex Bloedel, Javier Bianchi, Fernando Alvarez, Takuo Sugaya, Victoria Vanasco, Mike Harrison, and Peter Kondor. e- mail: [sditella@stanford.edu](mailto:sditella@stanford.edu). A previous version of this paper circulated with the title "Optimal Financial Regulation and the Concentration of Aggregate Risk". The views expressed herein are those of the author and do not necessarily reflect the views of the National Bureau of Economic Research.

NBER working papers are circulated for discussion and comment purposes. They have not been peer-reviewed or been subject to the review by the NBER Board of Directors that accompanies official NBER publications.

© 2017 by Sebastian Di Tella. All rights reserved. Short sections of text, not to exceed two paragraphs, may be quoted without explicit permission provided that full credit, including © notice, is given to the source.

Optimal Regulation of Financial Intermediaries  
Sebastian Di Tella  
NBER Working Paper No. 23586  
July 2017  
JEL No. E44,G01

### **ABSTRACT**

I characterize the optimal financial regulation policy in an economy where financial intermediaries trade capital assets on behalf of households, but must retain an equity stake to align incentives. Financial regulation is necessary because intermediaries cannot be excluded from privately trading in capital markets. They don't internalize that high asset prices force everyone to bear more risk. The socially optimal allocation can be implemented with a tax on asset holdings. I derive a sufficient statistic for the externality/optimal policy in terms of observable variables, valid for heterogeneous intermediaries and asset classes, and arbitrary aggregate shocks. I use market data on leverage and volatility of intermediaries' equity to measure the externality, which co-moves with the business cycle.

Sebastian Di Tella  
Stanford University  
Graduate School of Business  
655 Knight Way  
Stanford, CA 94305  
and NBER  
sditella@stanford.edu

# Optimal Regulation of Financial Intermediaries

Sebastian Di Tella\*

Stanford GSB

June 2017

## Abstract

I characterize the optimal financial regulation policy in an economy where financial intermediaries trade capital assets on behalf of households, but must retain an equity stake to align incentives. Financial regulation is necessary because intermediaries cannot be excluded from privately trading in capital markets. They don't internalize that high asset prices force everyone to bear more risk. The socially optimal allocation can be implemented with a tax on asset holdings. I derive a sufficient statistic for the externality/optimal policy in terms of observable variables, valid for heterogeneous intermediaries and asset classes, and arbitrary aggregate shocks. I use market data on leverage and volatility of intermediaries' equity to measure the externality, which co-moves with the business cycle.

## 1 Introduction

Financial intermediaries trade capital assets on behalf of households. However, excessive risk taking by financial intermediaries can create macro instability and lead to financial crises. As a result, there is a great interest in the regulation of financial intermediaries, especially after the financial crisis in 2007. But what are the right policy instruments, and what is the optimal way to use them? In this paper I propose a model of optimal financial regulation. I show that the optimal allocation can be implemented with a tax on asset holdings and I derive a simple formula that allows us to use market data to guide policy.

I use a macroeconomic model of financial crises based on Brunnermeier and Sannikov (2014), He and Krishnamurthy (2012), and Di Tella (2013), where financial intermediaries trade capital on behalf of households but must retain an equity stake to align incentives. The main contribution of this paper is to characterize the optimal financial regulation policy in this environment. The equity constraint is derived from a moral hazard problem with hidden trade: intermediaries can

---

\*I'd like to thank Andres Schneider, Andy Skrzypacz, Peter DeMarzo, Pablo Kurlat, Yuliy Sannikov, Bob Hall, Martin Schneider, Monika Piazzesi, V.V. Chari, Chad Jones, Chris Tonetti, Florian Scheuer, Eric Madsen, Alex Bloedel, Javier Bianchi, Fernando Alvarez, Takuo Sugaya, Victoria Vanasco, Mike Harrison, and Peter Kondor. e-mail: sditella@stanford.edu. A previous version of this paper circulated with the title "Optimal Financial Regulation and the Concentration of Aggregate Risk".

divert investment returns. Hidden trade is an important feature of the environment. Because an intermediary's job is precisely to buy and sell capital assets, he cannot be excluded from privately trading in this market. This is the ultimate source of inefficiency in this economy.<sup>1</sup> In contrast to previous papers, I don't put any constraints on private contracts. I compare the competitive equilibrium where agents can write complete *long-term* contracts, with the best allocation that can be achieved by a social planner facing the same informational frictions. An advantage of this mechanism design approach is that I don't need to commit to an arbitrary set of policy instruments – I let the model guide the choice of policy instrument.

Hidden trade creates an externality because the private benefit of diverting investment returns depends on the market value of capital assets. Intermediaries don't internalize that by demanding capital and bidding up its price, they worsen the moral hazard problem for everyone else. As a result, asset prices are too high and intermediaries must take too much idiosyncratic risk. A social planner would rather reduce asset prices, even at the cost of less investment, in order to reduce intermediaries' exposure to risk. The socially optimal allocation can be implemented as a competitive equilibrium with a tax on asset holdings that internalizes the externality without distorting other decisions (e.g., debt/equity margin).

A central concern of financial regulation policy is preventing the excessive concentration of aggregate, or systemic, risk on financial intermediaries. I allow for arbitrary aggregate shocks, and show that the unregulated competitive equilibrium may indeed feature a financial amplification channel, with financial losses concentrated on the balance sheets of intermediaries. In contrast to a large part of the literature, this is not the result of incomplete markets: intermediaries optimally choose this risk exposure. In the empirically relevant case with relative risk aversion greater than one, the competitive equilibrium concentrates financial losses on intermediaries after aggregate shocks that reduce the cost of delivering utility to them, relative to households. Essentially, intermediaries are willing to take large financial losses when they expect large excess returns looking forward, i.e. during downturns or financial crises. However, private contracts correctly measure the cost of delivering utility to intermediaries, so the allocation of aggregate risk is efficient. A planner who could only regulate intermediaries' exposure to aggregate risk would choose not to interfere. He can only improve the allocation by dealing with the externality. This is a feature of long-term contracts that does not hold with short-term contracts. Of course, the allocation of aggregate risk in the unregulated competitive equilibrium and the planner's allocation might very well be different. In this sense intermediaries might be excessively exposed to aggregate risk, creating an inefficient financial amplification channel.<sup>2</sup> But there is no need to regulate intermediaries' exposure to aggregate risk. Once the tax on asset holdings internalizes the externality, there is no need for further regulation (e.g. bailouts, stress tests, etc.).

---

<sup>1</sup>It is well known that hidden trade can be a source of inefficiency (see for example Farhi et al. (2009) and Kehoe and Levine (1993)). The contribution in this paper is to characterize the optimal financial regulation policy in a widely used and policy-relevant model of financial crises.

<sup>2</sup>In Section 7 I show that this is indeed the case for uncertainty shocks, for example.

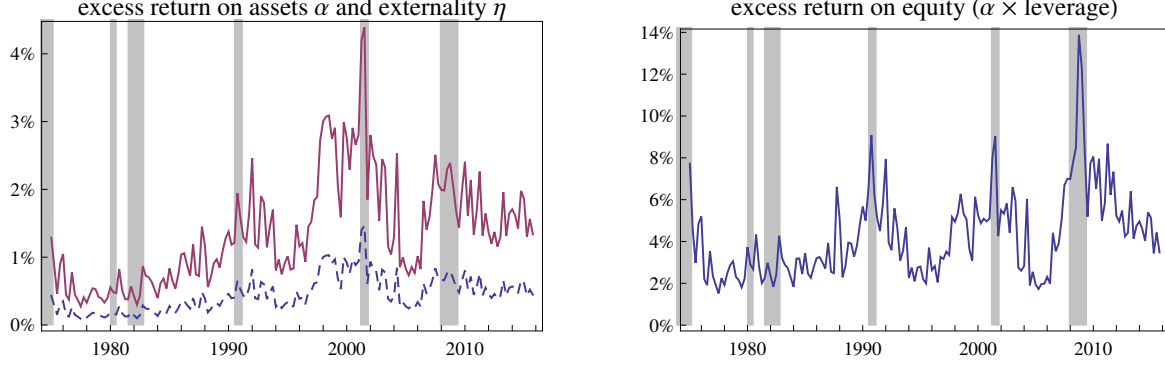


Figure 1: *Left*: intermediaries' risk-adjusted expected excess return on assets  $\alpha$  (dashed) and externality  $\eta$  (solid); *Right*: intermediaries' risk-adjusted expected excess return on equity  $\alpha \times \text{leverage}$ .

We can use market data to measure the externality and guide optimal policy. The unregulated competitive equilibrium has Marginal cost of capital = Marginal value of capital, as usual. However, because of the externality produced by hidden trade, the planner's FOC for investment is actually Marginal cost of capital  $\times (1 + \eta_t)$  = Marginal value of capital. Higher investment requires higher asset prices, which worsen the moral hazard problem. The externality  $\eta_t \geq 0$  measures this additional marginal cost of capital, and admits a simple sufficient statistic representation in terms of equilibrium observables

$$\eta_t = \alpha_t \epsilon_t \quad (1)$$

Here  $\alpha_t$  is intermediaries' equilibrium risk-adjusted expected excess return on assets, and  $\epsilon_t$  the technologically given elasticity of the cost of capital. This expression is true for any equilibrium allocation (not just the optimal allocation), after any history and for any type of aggregate shock hitting the economy. It has a simple interpretation. If we want to raise investment, asset prices (equal to the marginal cost of capital) will have to increase by  $\epsilon_t$  percent. As a result, intermediaries will have to increase the value of their asset holdings, exposing them to more idiosyncratic risk. In equilibrium, the excess return  $\alpha_t$  compensates intermediaries for the idiosyncratic risk they must take when holding capital, so  $\eta_t = \alpha_t \epsilon_t$  measures the additional marginal cost of capital coming from intermediaries' larger exposure to idiosyncratic risk. We can implement the optimal allocation by setting the present value of the tax on asset holdings (relative to the market value of assets) equal to the externality,  $T_t/q_t = \eta_t$ .<sup>3</sup> Intuitively, this reduces the market price of capital, internalizing the externality.

Expression (1) allows us to measure the externality using market data without having to specify many structural features of the model. The model also provides a simple endogenous formula for the excess return  $\alpha_t$  in terms of intermediaries' leverage and idiosyncratic risk, which may be easier

<sup>3</sup>The optimal policy will in general require a time-varying tax rate, but it can be implemented by continuously adjusting the tax rate to target the present value  $T_t$ .

to measure and allows us to understand how the externality is affected by aggregate shocks. As we would expect, the equilibrium excess return  $\alpha_t$  is large when intermediaries' idiosyncratic risk and leverage are high, or when financial constraints are tight, e.g., during financial crises.

I build a time series for the model-predicted excess return  $\alpha_t$  and the externality  $\eta_t$  using CRSP/Compustat data. Figure 1 shows the resulting time series for the baseline calibration. The average externality is 1.36%, and it can go up to 4.39% during downturns when the excess return on assets  $\alpha_t$  is large. To put this in context, a 1.36% reduction in the marginal cost of capital corresponds to a reduction in the investment share of GDP of roughly 1.36 percentage points (e.g. from 20% to 18.64% of GDP). The model also yields an average excess return on equity ( $\text{leverage}_t \times \alpha_t$ ) for financial intermediaries of 4.26%, which also spikes during downturns – up to 13.88% at the peak of the financial crisis.<sup>4</sup>

An important practical question for regulators is how different intermediaries and different asset classes should be treated (e.g. how should we risk-weight different assets?). To address this issue, I extend the baseline model to incorporate heterogeneous intermediaries and asset classes. The optimal allocation can still be implemented with taxes on asset holdings. Each asset class has its own tax, but we do not discriminate between intermediaries. The sufficient statistic (1) is true for each asset class, and tells us how each class should be treated. Regulators should not be directly concerned with the risk of each asset class, or even their systemic risk. Rather, for each asset class  $j$ , the average excess return  $\alpha_{j,t}$  contains all the relevant information (along with the elasticity  $\epsilon_j$ ), and reflects both the asset class' risk and the place it occupies on intermediaries' balance sheets.

Finally, it is worth contrasting the tax on assets with capital requirements, which are a common component of financial regulation policy in practice. The tax makes assets less attractive, but doesn't affect the debt/equity margin. Intermediaries have private reasons for preferring a certain debt and equity mix, related to insiders' incentives, and the planner doesn't need to interfere. In contrast, capital requirements penalize the use of debt, so they unnecessarily interfere in this margin. To the extent that distorting the debt/equity margin is costly for intermediaries, capital requirements also act as a tax on assets, but only indirectly. As a result, while capital requirements could be used in a welfare improving way by a social planner, they are not the optimal policy instrument in this environment.<sup>5</sup>

I use a continuous-time setup with Epstein-Zin preferences and arbitrary aggregate shocks that allows me to connect results with asset pricing literature. A methodological contribution of the paper consists of characterizing optimal dynamic contracts in this environment with recursive EZ preferences and arbitrary prices or exogenous shocks. The competitive equilibrium and the social planner's allocation can be characterized with a system of PDEs. I illustrate all the theoretical results with a fully solved numerical example. I show the procedure in the Online Appendix.

---

<sup>4</sup>This is the gross alpha on equity, before fees. In the model outside investors don't get any excess return.

<sup>5</sup>Capital requirements may be justified if government bailouts create incentives for banks to take too much risk (Chari and Kehoe (2013)). In this environment there is no reason for bailouts, however.

## 1.1 Literature review

I use an environment similar to Brunnermeier and Sannikov (2014), Di Tella (2013), He and Krishnamurthy (2012), and He and Krishnamurthy (2013), where financial intermediaries trade capital on behalf of households but must retain an equity stake for incentive reasons.<sup>6</sup> Whereas these papers' main contribution is a positive explanation of financial crises, the main contribution of this paper is the characterization of the optimal regulation policy in this environment. In order to understand the efficiency of the competitive equilibrium and the scope for financial regulation, it is important that we don't impose any ad-hoc constraints on the contract space. In contrast to this literature, I allow private agents to write complete, long-term contracts with full commitment. While technically more involved, long-term contracts play an important role in the welfare and policy analysis. In contrast, most of these papers feature incomplete short-term contracts, where intermediaries are not allowed to share aggregate risk. A planner can therefore improve the competitive allocation by either completing the market, or by redistributing wealth through asset prices. However, financial markets provide ample opportunities for financial intermediaries to hedge aggregate risk. Di Tella (2013) does allow contingent contracts and shows that the competitive equilibrium may nonetheless feature a financial amplification channel. The mechanism behind the financial amplification channel here is a generalized version of the mechanism in that paper. However, Di Tella (2013) still looks only at short-term contracts, and this turns out to be crucial for the purpose of financial regulation, which is the focus of this paper. Private short-term contracts do not internalize that giving intermediaries more wealth can relax the risk sharing problem, so a planner that can only regulate intermediaries' exposure to aggregate risk can improve the competitive allocation, even though private agents are free to share aggregate risk. Long-term contracts eliminate this source of inefficiency. In addition, as it turns out, optimal long-term contracts are renegotiation-proof.

The ultimate source of inefficiency in this environment is that financial intermediaries' activity in capital markets cannot be easily monitored. It is well known that hidden trade has the potential to introduce inefficiency into a competitive equilibrium, as in Farhi et al. (2009) or Kehoe and Levine (1993), because a social planner may be able to indirectly affect the equilibrium price in the hidden market and relax the incentive constraints.<sup>7</sup> The contribution of this paper is to characterize the resulting externality and optimal policy in a widely used and policy-relevant class of models of financial crises.

A different strand of the literature emphasizes incomplete markets as a source of inefficiency (see Hart (1975), Geanakoplos and Polemarchakis (1986), Stiglitz (1982), Geanakoplos et al. (1990)). In Lorenzoni (2008) and Korinek (2012), more productive agents are unable to obtain enough insurance

---

<sup>6</sup>More generally, this paper fits into the literature on financial amplification channel going back to Kiyotaki and Moore (1997) and Bernanke et al. (1999).

<sup>7</sup>It is worth clarifying the role of decentralized contracts: if all agents in the economy could get together and write one large contract, we would obtain efficiency – this is in fact the planner's problem. The competitive equilibrium is inefficient in the sense that the planner's allocation cannot be decentralized with a competitive market without any policy intervention.

against downturns, so the marginal rates of substitution don't equalize. Raising the equilibrium price of assets that more productive agents hold is a way of transferring resources to them. He and Kondor (2014) and Davila et al. (2012) also feature this source of inefficiency. Here I assume complete contracts/markets, so this source of inefficiency is absent. In this line, Rampini and Viswanathan (2010) study an economy with borrowing constraints derived from a limited commitment problem, but allow complete financial markets. Credit constrained firms may decide to forgo insurance against aggregate shocks in order to obtain more funds to invest up front. Since financial markets are complete, however, this aggregate risk sharing is efficient. Alvarez and Jermann (2000) derive borrowing constraints from a limited commitment problem. Since there is no restriction on contracts, and no hidden trade, the competitive equilibrium is efficient.

Inefficiency can also arise when financial frictions have prices in them, since private agents may not internalize how their actions affect those constraints through prices, such as in Bianchi (2011) and Bianchi and Mendoza (2011), and Gersbach and Rochet (2012). Farhi and Werning (2013) instead look at economies with nominal rigidities, where prices are fixed but Keynesian aggregate demand effects create a scope for regulation. In most of this literature the planner's policy instruments are restricted. In contrast, here I characterize the best allocation that can be achieved by a social planner facing the same informational frictions. This allows me to use the model to guide the choice of policy instrument. In general, when the inefficiency is caused by a price, ideally we would want to use an instrument that affects the price and as few other things as possible, to the extent such an instrument is available.

The contractual setting is related to the partial equilibrium settings in Sannikov (2008), DeMarzo and Sannikov (2006), He (2011), DeMarzo et al. (2012), and Biais et al. (2007). In particular, I use the same contractual setting as in Di Tella and Sannikov (2014) who characterize optimal contracts in a stationary environment where agents have access to hidden savings. A methodological contribution of this paper consists of characterizing optimal dynamic contracts in this environment with recursive EZ preferences and arbitrary prices or exogenous shocks. I rule out hidden savings, but the impact of hidden savings on the optimal financial regulation policy seems like a fruitful avenue for future research.

## 2 The model

I build on the models of financial crises in Brunnermeier and Sannikov (2014), Di Tella (2013), He and Krishnamurthy (2012), and He and Krishnamurthy (2013). The main difference is that I allow agents to write fully contingent long-term contracts, and I consider arbitrary aggregate shocks that can affect any feature of the environment.



## 2.1 Setting

**Technology.** The economy is populated by a continuum of households and financial intermediaries, identical in every respect except that intermediaries can trade capital on behalf of households. There are two goods, consumption and capital. Denote by  $k_t$  the aggregate “efficiency units” of capital in the economy, and by  $k_{i,t}$  the individual holdings of intermediary  $i$ , where  $t \in [0, \infty)$  is time. Capital can be costlessly reallocated between intermediaries, so  $k_{i,t}$  will be a choice variable. However, capital is exposed to both aggregate and intermediary-specific idiosyncratic risk. If an intermediary holds  $k_{i,t}$  units of capital, he gets a “capital quality” shock<sup>8</sup>

$$d\Delta_{i,t} = \sigma_t k_{i,t} dZ_t + \nu_t k_{i,t} dW_{i,t}$$

where  $Z$  is an aggregate  $d$ -dimensional brownian motion, and  $W_i$  is an idiosyncratic brownian motion for each intermediary  $i$ .<sup>9</sup> Here  $Z$  represents an aggregate TFP shock, and  $W_i$  the outcome of intermediary  $i$ ’s idiosyncratic activity.<sup>10</sup>

Capital produces a flow of consumption goods  $ak_t$ . In addition, competitive investment firms use capital to produce a flow of new capital  $g_t k_t$  at a cost  $\iota_t(g_t)k_t$  in consumption goods, where  $\iota'_t \geq 0$  and  $\iota''_t \geq 0$ . As a result of investment and shocks, the aggregate capital stock  $k$  follows the law of motion

$$\frac{dk_t}{k_t} = g_t dt + \sigma_t dZ_t$$

where the idiosyncratic shocks  $W_i$  have been aggregated away.

We can let several features of the environment, such as  $\sigma_t$ ,  $\nu_t$ ,  $\iota_t(\cdot)$ , or  $\phi_t$  introduced below, depend on the history of aggregate shocks  $Z$ . To this end introduce an exogenous aggregate state of the economy  $Y_t \in \mathbb{R}^n$ , with law of motion

$$dY_t = \mu_Y(Y_t)dt + \sigma_Y(Y_t)dZ_t$$

We can later specify how this aggregate state affects the economy, e.g.  $\nu_t = \nu(Y_t)$  for uncertainty shocks, or  $\iota_t(g) = \iota(g; Y_t)$  for shocks to investment technology. Notice that  $Y$  is driven by the same  $Z$  we called a TFP shock above, but this is wlog because  $Z$  and  $Y$  can be multidimensional. TFP shocks to  $k$  may or may not be correlated with shocks to other features of the environment.

---

<sup>8</sup>In other words, while  $k_{i,t}$  is a choice variable, the cumulative change in the capital stock for which intermediary  $i$  is responsible up to time  $t$  is  $\int_0^t d\Delta_{i,t}$ .

<sup>9</sup> $Z$  and  $\{W_i\}_{i \in \mathbb{I}}$  are all mutually independent and admit an exact law of large numbers. See Sun (2006) for details.

<sup>10</sup>For example, if two intermediaries invest \$1 they will obtain different returns depending on their precise investment strategies.

**Preferences.** Both intermediaries and households have Epstein-Zin preferences with the same discount factor  $\rho$ , risk aversion  $\gamma$ , and elasticity of intertemporal substitution  $\psi$ :

$$U_t = \mathbb{E}_t \left[ \int_t^\infty f(c_u, U_u) du \right] \quad (2)$$

where the EZ aggregator takes the form

$$f(c, U) = \frac{1}{1 - 1/\psi} \left\{ \frac{c^{1-1/\psi}}{[(1-\gamma)U]^{\frac{\gamma-1/\psi}{1-\gamma}}} - \rho(1-\gamma)U \right\}$$

I will focus on the case where relative risk aversion is larger than log:  $\gamma > 1$ , and elasticity of intertemporal substitution is larger than two:  $\psi > 2$ .<sup>11,12</sup>

**Markets and investment.** There is a complete financial market with risk-free rate  $r$  and price  $\pi$  for aggregate risk  $Z$ . Idiosyncratic risks  $W_i$  are tradable but have zero price in the financial market since they can be aggregated away. Let  $Q$  be the equivalent martingale measure associated with  $r$  and  $\pi$ .

There is a competitive market for capital with price  $q > 0$  with law of motion

$$\frac{dq_t}{q_t} = \mu_{q,t} dt + \sigma_{q,t} dZ_t$$

Investment firms rent capital from intermediaries to produce new capital. Their profit maximization yields Tobin's  $Q$

$$l'_t(g_t) = q_t$$

and a rental price for capital  $r_t^k = q_t g_t - \iota_t(g_t)$ .<sup>13</sup>

Prices  $q$ ,  $r$ ,  $\pi$  depend on the history of aggregate shocks  $Z$  and are determined in equilibrium.

**Tax on asset holdings.** I will later show that the planner's optimal allocation can be implemented with a tax on assets, so it is useful to introduce it at this point. An intermediary who holds capital worth  $q_t k_{i,t}$  must pay a tax flow  $\tau_t^k q_t k_{i,t}$ , where  $\tau^k$  may depend on the history of aggregate shocks  $Z$ . As a result the government raises a flow  $\tau_t^k q_t k_t$ , which can be distributed back to agents

---

<sup>11</sup>It is natural to focus on the case with elasticity of intertemporal substitution greater than 1, especially when studying economies with stochastic volatility. The further restriction to  $EIS > 2$  is required to ensure the existence of the competitive equilibrium. See the discussion below on hidden savings. The empirical literature on the EIS is mixed. Several authors find an EIS less than 1 (Hall (1988), Vissing-Jorgensen (2002)) while others an EIS of 1.5, 2, or even larger (Campbell and Beeler (2009), Bansal et al. (2014), Gruber (2013), Mulligan (2002)).

<sup>12</sup>For applications it might be useful to introduce retirement among intermediaries, which arrives with Poisson intensity  $\theta$ , in order to obtain a stationary distribution. I allow for this in the Online Appendix. For simplicity we can focus on  $\theta = 0$ .

<sup>13</sup>Investment firms choose  $k$  and  $g$  to maximize profits,  $\max_{g,k} (q_t g - \iota_t(g) - r_t^k) k$ . Constant returns to scale imply zero profits in equilibrium, so it doesn't matter who owns them.

via lump-sum transfers. The present value of transfers is  $T_t k_t$

$$T_t = \frac{1}{k_t} \mathbb{E}_t^Q \left[ \int_t^\infty e^{-\int_t^u r_m dm} \tau_u^k q_u k_u du \right] \quad (3)$$

These transfers are part of private agents' aggregate wealth  $(q_t + T_t)k_t$ . In the unregulated economy, we simply take  $\tau^k = 0$  and therefore  $T = 0$ . It should be stressed that I am not restricting the planner to this policy instrument, but rather finding that the optimal allocation can be implemented this way.

**Households' problem.** Households are all identical and have homothetic preferences, so we may consider the problem faced by a representative household. It starts with some wealth  $w_0$  (derived from its initial ownership of capital and government transfers) and chooses a stream of consumption  $c_h$  to maximize utility subject to the budget constraint

$$V_0 = \max_{c_h} U(c_h)$$

$$st : \quad \mathbb{E}^Q \left[ \int_0^\infty e^{-\int_0^t r_m dm} c_{h,t} dt \right] \leq w_0$$

This is equivalent to choosing  $c_h$  and the exposure of wealth to aggregate risk  $\sigma_w$  to maximize utility subject to a dynamic budget constraint

$$\frac{dw_t}{w_t} = (r_t + \sigma_{w,t} \pi_t - \tilde{c}_{h,t}) dt + \sigma_{w,t} dZ_t$$

and a solvency constraint  $w_t \geq 0$ , where  $\tilde{c}_{h,t} = c_{h,t}/w_t$ .<sup>14</sup> Implicit in the second formulation is the fact that since idiosyncratic risks  $W_i$  have price zero in equilibrium, it is wlog that households will never choose to be exposed to them.

**Intermediaries' contracts.** Each intermediary would like to borrow from and share risk with the market, but he faces a moral hazard problem with hidden trade: he can secretly steal capital for a private benefit. The contractual environment is developed in detail in the Online Appendix. In this section I drop the  $i$  subindex to avoid clutter.

Formally, the intermediary starts with net worth  $n_0 > 0$  which he gives up in exchange for a full commitment contract  $\mathcal{C} = (c, k)$  that specifies his consumption stream  $c$  and the capital he will manage  $k$ . Both can depend on the history of aggregate shocks  $Z$  and his observable return  $R$ .<sup>15</sup> Faced with a contract  $\mathcal{C}$ , the intermediary privately chooses a stealing plan  $s \geq 0$ , also contingent

<sup>14</sup>The link is  $w_t = \mathbb{E}_t^Q \left[ \int_t^\infty e^{-\int_t^u r_m dm} c_{h,u} du \right]$  and  $\sigma_{w,t} w_t$  is the loading on  $Z$  of  $w_t$  thus defined.

<sup>15</sup>In principle the contract could also depend on other intermediaries' returns, but this is never optimal.

on the history of  $Z$  and  $R$ . As a result, the observed return per dollar  $q_t k_t$  invested in capital is<sup>16</sup>

$$dR_t = \left( \frac{a - \iota_t(g_t)}{q_t} + g_t + \mu_{q,t} + \sigma_t \sigma'_{q,t} - \tau_t^k - s_t \right) dt + (\sigma_t + \sigma_{q,t}) dZ_t + \nu_t dW_t$$

The principal doesn't observe the stealing  $s$ , so he doesn't know if bad returns  $R$  are due to stealing or just bad luck  $W$ .

The intermediary keeps a fraction  $\phi_t \in (0, 1)$  of the stolen funds  $\phi_t q_t k_t s_t$ , which can also depend on the history of aggregate shocks  $Z$ . He adds them to his consumption (he doesn't have access to hidden savings) so his utility is  $U(c + \phi q k s)$ . Hidden trade is playing a crucial role here, allowing the intermediary to transform stolen capital into consumption goods through markets.<sup>17</sup> Buying and selling capital assets is essential for what intermediaries do, so it's difficult to monitor their activity. Stealing can represent a variety of misbehavior. For example, an intermediary can undersell assets, hurting the principal and benefiting a third party who then shares the spoils (this is the essence of "late trading"). In Section 2.3 I provide concrete examples of the type of intermediary misbehavior that stealing is meant to capture.

In this environment it is always optimal to implement no stealing in equilibrium,  $s = 0$ .<sup>18</sup> A contract  $\mathcal{C} = (c, k)$  is *incentive compatible* if

$$0 \in \arg \max_s U(c + \phi q k s) \quad (4)$$

Let  $\mathbb{IC}$  be the set of incentive compatible contracts. An incentive compatible contract is *optimal* if it minimizes the cost of delivering utility to the agent:

$$J_0(u_0) = \min_{(c,k) \in \mathbb{IC}} \mathbb{E}^Q \left[ \int_0^\infty e^{-\int_0^t r_m dm} (c_t - q_t k_t \alpha_t) dt \right]$$

*s.t.*  $U(c) \geq u_0$

where  $\alpha_t \equiv \frac{a - \iota_t(g_t)}{q_t} + g_t + \mu_{q,t} + \sigma_t \sigma'_{q,t} - \tau_t^k - r_t - (\sigma_t + \sigma_{q,t}) \pi_t$  is the risk-adjusted expected excess return on capital (determined in equilibrium).<sup>19</sup> We pin down the initial utility with a break even condition. An intermediary with net worth  $n_0$  can buy a contract with cost  $J_0(u_0) = n_0$ , and get utility  $u_0$ . At any point in time  $t$ , denote by  $J_t$  the continuation cost of the contract.

**Implementation with an equity constraint.** The optimal contract can be implemented as a constrained portfolio problem with  $n_t = J_t$  as the intermediary's net worth. The intermediary

<sup>16</sup>Notice the total dividend flow from holding capital is the output  $a$  plus the rent  $r_t^k = q_t g_t - \iota_t(g_t)$ .

<sup>17</sup>If the intermediary didn't have access to hidden trade, stealing capital wouldn't give him any private benefit, and there wouldn't be a moral hazard problem.

<sup>18</sup>The standard argument applies: if the agent is stealing in equilibrium it's better to just give him what he steals and have him not steal instead. See DeMarzo and Sannikov (2006) or DeMarzo and Fishman (2007) for example.

<sup>19</sup>In the context of investment funds, this is the "gross alpha" on assets. Here in equilibrium intermediaries appropriate all the excess returns, so outside investors only get the market rate of return (zero "net alpha" on equity). See Berk and Green (2004). Other financial institutions also have an implicit "alpha".

raises outside equity  $e_t$  and debt  $d_t$  to invest in capital:  $q_t k_t = n_t + e_t + d_t$ . He must keep at least a fraction  $\tilde{\phi}_t = \frac{n_t}{n_t + e_t}$  of the total equity for incentive reasons (i.e. “skin in the game”), and the contract specifies his compensation  $\tilde{c}_t = c_t/n_t$ , but he is free to choose how much to invest in capital  $k$  and the exposure to aggregate risk  $\sigma_{n,t}$ . Since he wants to minimize his exposure to idiosyncratic risk, and he can get aggregate risk in other ways, the retained equity constraint is always binding. Debt yields the risk-free rate  $r$  and outside equity yields a return  $r + \sigma_{n,t}\pi_t$  and volatility  $\sigma_{n,t}dZ_t + \frac{q_t k_t}{n_t + e_t}\nu_t dW_t$ . As a result the intermediary’s net worth follows the dynamic budget constraint

$$dn_t = (r_t n_t + q_t k_t \alpha_t - c_t + \sigma_{n,t} n_t \pi_t)dt + \sigma_{n,t} n_t dZ_t + \tilde{\phi}_t q_t k_t \nu_t dW_t \quad (5)$$

The intermediary chooses  $k$  and  $\sigma_n$  to maximize  $U(\tilde{c}n)$  subject to (5) and  $n_t \geq 0$ . Lemma 3 in Section 1.4 of the Online Appendix formalizes implementation and shows this scheme implements the optimal contract.

## 2.2 Competitive Equilibrium

Take as given the initial capital stock  $k_0$  and the initial distribution of wealth for intermediaries  $\{\theta_i > 0\}_{i \in \mathbb{I}}$ , such that  $\int_{\mathbb{I}} \theta_i di < 1$  (the rest belongs to the representative household).

**Definition.** A competitive equilibrium is a set of aggregate processes: price of capital  $q$ , value of transfers  $T$ , risk-free interest rate  $r$ , price of aggregate risk  $\pi$ , growth rate  $g$ , and the aggregate capital stock  $k$ ; a contract  $\mathcal{C}_i = (c_i, k_i)$  for each intermediary; and a consumption stream  $c_h$  for the representative household, such that

- i. The representative household’s consumption and intermediaries’ contracts are optimal, with initial wealth  $n_{i,0} = \theta_i(q_0 + T_0)k_0$  and  $w_0 = (q_0 + T_0)k_0(1 - \int_{\mathbb{I}} \theta_i di)$
- ii. Investment is optimal  $\iota'_t(g_t) = q_t$
- iii. The value of transfers  $T$  satisfies (3)
- iv. Market clearing

$$\int_{\mathbb{I}} c_{i,t} di + c_{h,t} = (a - \iota_t(g_t))k_t$$

$$\int_{\mathbb{I}} k_{i,t} di = k_t$$

- v. Aggregate capital satisfies the law of motion

$$\frac{dk_t}{k_t} = g_t dt + \sigma_t dZ_t$$

## 2.3 Discussion of assumptions

Financial intermediaries should be interpreted as the insiders who run financial institutions that invest capital on behalf of households, and who must retain an equity stake for incentive reasons. They could represent different types of financial intermediaries such as hedge funds, PE or VC funds, broker/dealers. Commercial banks are *sui generis*. To the extent that they are involved in extending credit (mortgages, business loans, etc.), they fit into the framework in this paper. However, commercial banks are also in the business of providing liquidity and enjoy deposit insurance or implicit bailouts. This is not included in the model and might require specific regulation (Chari and Kehoe (2013)). As is common in the literature, in the model intermediaries hold physical capital, while in reality they hold financial claims on firms and households that actually hold capital. The focus here is on the relationship between these intermediaries and their outside investors, so I abstract from the relationship between intermediaries and final users of capital. In the baseline model I consider only a single type of financial intermediary and homogenous capital, but a central concern for regulators is how to treat different types of financial institutions and different asset classes. In Section 6 I extend the framework to address these issues.

Equity stakes for insiders are a common financial arrangement designed to align insiders' incentives with outside investors'. He and Krishnamurthy (2013) report an average equity ownership of officers and directors in the finance, insurance, and real estate sectors of 17.4%. Hedge funds, PE and VC typically charge a management fee of 2% on assets under management (AUM), plus a "carried interest" of 20% of capital gains (above a watermark or hurdle rate).<sup>20</sup> Mutual fund directors and managers usually have their own wealth invested in the fund or bonuses that depend on the fund performance (Chen et al. (2008) and Ma et al. (2015)).

The private diversion of funds can represent several forms of misbehavior. Churning, front-running, market timing, late trading, and bid-ask spread manipulation are important concerns for mutual and hedge funds. PE and VC funds may overpay or undersell firms, and they also charge large and obscure portfolio-company fees. They all involve benefiting some privileged investors, insiders, or third parties at the cost of investors, usually by letting them trade at stale prices or with inside information, in exchange for a quid pro quo (for example, fee-generating "sticky assets").<sup>21</sup>

---

<sup>20</sup>Notice even the 2% already embodies an equity stake, because good returns increase AUM and therefore fees. The 20% is designed to provide strong incentives. Ackermann et al. (1999) finds that this does indeed improve performance, raising the Sharpe ratio by 0.15.

<sup>21</sup>The 2003 mutual fund scandal is a salient example. BoA's Nations Fund allegedly allowed late trading by privileged investors. Mutual funds shares are priced at 4pm, but these privileged investors were allowed to buy after 4pm at those stale prices. This allowed them to buy fund shares when the value of the assets was higher than the price, hurting the other investors. They then shared the spoils with the mutual fund management by depositing "sticky assets" in fee-generating funds from the same family. See Zitzewitz (2003) for a more detailed explanation of late trading and an empirical analysis of its relevance.

The same scandal involved accusations of front-running (allowing privileged clients or partners to benefit from the price impact of large movements in the fund portfolio) that led to the resignation of the chairman of Strong Mutual Funds. Fund families may also favor some funds at the expense of others; see Gaspar et al. (2006). Lack (2012) describes how hedge funds may manipulate the bid-ask spread.

Portfolio-company fees account for transactions, advisory and monitoring, consulting, etc. They are levied directly on the acquired firms, so the fund investors never see them. They only notice lower returns on their investment. In

Hidden trade is essential in all these examples. Since financial intermediaries' job is to buy and sell capital assets, it is difficult to determine if they are doing the right trades or at the right prices.<sup>22</sup> In the model intermediaries steal capital and trade it for consumption goods. If they couldn't trade capital there wouldn't be a moral hazard problem (they don't value capital by itself, only consumption). Contrast this with a factory worker who may also use or manage very valuable capital, like a forklift. He too may have a moral hazard problem that may impact the value of the capital. But since their job does not involve buying and selling capital, there is no hidden trade problem. Note that while intermediaries ability to trade capital for consumption goods is very important, the presence of spot markets vs. futures markets is not. Everything in this model fits into an Arrow-Debreu intertemporal framework.

I allow agents to write complete, long-term contracts. It is important that we don't impose any ad-hoc constraints on private contracts in order to understand the efficiency properties of the competitive equilibrium. In particular, contracts can be made contingent on all observable variables, including all aggregate shocks. This is also realistic – in practice financial markets provide ample opportunities for intermediaries to hedge aggregate risk. Long term contracts make sense when thinking of contracts between financial institutions and their insiders. In addition, they provide a clean contractual environment which makes comparisons with the social planner's allocation straightforward. As it turns out, optimal long-term contracts are renegotiation-proof, and the distinction between short- and long-term contracts is important for the efficiency of the competitive equilibrium.

Finally, an intermediary's idiosyncratic risk  $W_i$  represents the risk associated with their specific investment activity. For example, if two hedge funds invest a dollar in stocks, they will obtain different returns depending on their specific trading strategy. The idiosyncratic risk  $W_{i,t}$  is not the risk in each of the assets they buy, since they may diversify or hedge, but rather the idiosyncratic risk in their overall investment strategy which reflects their skill, information, or luck. Likewise, PE or VC funds must pick some firms/startups to invest in based on their business analysis or private information, and are therefore exposed to idiosyncratic risk. Commercial banks that issue mortgages and business loans are very diversified with respect to the risk of each of those loans. But they are exposed to idiosyncratic risk that reflects their business strategy: e.g. some banks may have a large exposure to the Miami real estate market, others to the auto industry, or they may differ in their securitization strategies, etc., so that two banks will generally get different returns.

---

addition, PE and VC funds have incentives to postpone shutting down worthless investments to continue collecting management fees. See Ang (2014), pages 610-612 and Phalippou (2009).

<sup>22</sup>It may seem surprising then that in the model  $k$  is contractible. While the contract knows that the intermediary has assets worth  $q_t k_t$ , it can't tell exactly what trades the intermediary is doing, or if these trades are the right ones. In addition, as it turns out, under the optimal contract the intermediary has no incentives to deviate on the  $k$  margin, so there is no need to actually monitor him there (see Lemma 3 in the Online Appendix).

### 3 Solving the competitive equilibrium

#### 3.1 Recursive formulation

**Optimal contracts.** Intermediaries' optimal contracts are recursive in their continuation utility  $U_{i,t}$ . Drop the  $i$  subscript to simplify notation. We can use Lemma 1 in the Online Appendix to write the law of motion of an intermediary's continuation utility

$$dU_t = -f(c_t, U_t)dt + \sigma_{U,t}dZ_t + \tilde{\sigma}_{U,t}dW_t \quad (6)$$

This can be interpreted as a promise keeping constraint. If the intermediary has been promised utility  $U$ , this must be delivered by consumption  $c$ , either today or in the future. His continuation utility can be exposed to both aggregate risk  $Z$  and idiosyncratic risk  $W$ . Exposing the intermediary to idiosyncratic risk  $W$  is costly because he is risk averse and the market doesn't price idiosyncratic risk (the first best has full insurance against idiosyncratic risk), but it is necessary for incentive reasons. If the intermediary steals, he adds  $\phi q k s$  to his consumption, but bad returns are more likely to be observed, conditional on the observable aggregate shock. To deter him from stealing, the optimal contract must give him lower continuation utility after bad outcomes are observed. Lemma 2 in the Online Appendix shows that, for the parameter values  $\gamma > 1$  and  $\psi > 1$ , the contract  $\mathcal{C} = (c, k)$  is incentive compatible if and only if

$$0 \in \arg \max_{s \geq 0} f(c_t + \phi_t q_t k_t s, U_t) - \tilde{\sigma}_{U,t} \frac{s}{\nu_t} - f(c_t, U_t)$$

Taking FOC we obtain

$$\tilde{\sigma}_{U,t} \geq \partial_c f(c_t, U_t) \phi_t q_t k_t \nu_t = \frac{c_t^{-1/\psi}}{((1-\gamma)U_t)^{\frac{\gamma-1/\psi}{1-\gamma}}} \phi_t q_t k_t \nu_t \geq 0 \quad (7)$$

The IC constraint will be binding in the optimal contract. We can also verify that if contract  $\mathcal{C} = (c, k)$  is incentive compatible, so is a scaled up version of it  $\mathcal{C}' = (\kappa c, \kappa k)$ . In consequence, the cost function of the optimal contract takes the form

$$J_t = \xi_t ((1-\gamma)U_t)^{\frac{1}{1-\gamma}} \quad (8)$$

Thanks to homothetic preferences, the optimal contract is linear in the utility of the intermediary measured in consumption units  $x_t = ((1-\gamma)U_t)^{\frac{1}{1-\gamma}}$  (up to a constant). The endogenous process  $\xi$  captures the stochastic investment opportunities facing the intermediary, and tells us what is the cost of delivering utility  $x$  to him. It depends only on the history of aggregate shocks  $Z$  and follows the law of motion

$$\frac{d\xi_t}{\xi_t} = \mu_{\xi,t}dt + \sigma_{\xi,t}dZ_t \quad (9)$$



which must be determined in equilibrium. The HJB equation associated with the optimal contract is

$$r_t J_t dt = \min_{c, k, \sigma_U} (c - q_t k \alpha_t) dt + \mathbb{E}_t^Q [dJ_t] \quad (10)$$

We can use Ito's lemma together with (6) and (9) to expand the last term. Since expectations are taken under the equivalent martingale measure  $Q$ , it is useful to write  $Z_t = Z_t^Q - \int_0^t \pi_u du$ , where  $Z^Q$  is a Brownian motion under  $Q$ . We can normalize the controls  $c_t = \hat{c}_t x_t$ ,  $k_t = \hat{k}_t x_t$ , and  $\sigma_{U,t} = \sigma_{x,t}(1 - \gamma)U_t$ . Intermediaries get consumption and capital proportional to their continuation utility measured in consumption units  $x$ , i.e. they all get the same  $\hat{c}$ ,  $\hat{k}$ , and  $\sigma_x$ . The HJB equation then takes the following form<sup>23</sup>

$$\begin{aligned} r_t \xi_t = & \min_{\hat{c}, \hat{k}, \sigma_x} \hat{c} - q_t \hat{k} \alpha_t + \xi_t \left\{ \frac{1}{1 - \frac{1}{\psi}} (\rho - \hat{c}^{1-1/\psi}) - \sigma_x \pi_t \right. \\ & \left. + \mu_{\xi,t} - \sigma_{\xi,t} \pi_t + \frac{1}{2} \gamma \sigma_x^2 + \frac{1}{2} \gamma \left( \hat{c}^{-1/\psi} \phi_t q_t \hat{k} \nu_t \right)^2 + \sigma_{\xi,t} \sigma_x \right\} \end{aligned} \quad (11)$$

It is easy to see from (10) that the intermediary's net worth  $n_t = J_t = \xi_t x_t$  follows the law of motion (5). In fact, Lemma 3 in the Online Appendix shows that the optimal contract can be implemented with a constrained portfolio problem. The intermediary must retain an equity stake  $\frac{n_t}{n_t + e_t} = \tilde{\phi}_t$ , and his compensation out of his net worth is specified by  $\tilde{c}_t = c_t/n_t$ . Both depend on the history of returns  $R$  and aggregate shocks  $Z$ . The intermediary is free to choose how much to invest in capital  $k$  and his exposure to aggregate shocks  $\sigma_n$ . The retained equity stake  $\tilde{\phi}_t$  is given by

$$\tilde{\phi}_t = \xi_t \hat{c}_t^{-1/\psi} \phi_t = \xi_t^{1-1/\psi} \left( \frac{c_t}{n_t} \right)^{-1/\psi} \phi_t \quad (12)$$

The intermediary's equity stake provides incentives to deter misbehavior, but forces him to keep a fraction  $\tilde{\phi}_t$  of the idiosyncratic risk from his capital. Note that with long-term contracts the principal can relax the equity constraint,  $\tilde{\phi}_t < \phi_t$ , and improve the idiosyncratic risk sharing problem by front loading the agent's consumption. A large  $\hat{c}_t$  reduces the private benefit of stealing, as shown in the IC constraint (7). This allows private contracts some flexibility on the equity constraint, and is also the reason why the intermediary cannot be allowed to choose his compensation on his own.<sup>24</sup>

Finally, notice that the optimal contract is renegotiation-proof. After any history, the continuation contract is the cheapest way of delivering the promised utility to the intermediary. If there was a cheaper incentive compatible contract that delivered at least as much utility, we could scale it down to deliver the same utility, at an even lower cost. And because it delivers the same utility, it would

<sup>23</sup>Existence of the optimal contract requires  $\psi > 2$ . This is related to the assumption of no hidden savings. Once we assume this, the objective function in the HJB is convex, and the FOC are sufficient for optimality. The Online Appendix provides a verification theorem.

<sup>24</sup>In the setting with short-term contracts in Di Tella (2013), we get the same characterization with  $\tilde{\phi}_t = \phi_t$  because contracts cannot front-load the intermediary's consumption. If we further assume that aggregate risk cannot be traded, we get the contractual setting in Brunnermeier and Sannikov (2014) or He and Krishnamurthy (2012), where  $\sigma_{n,t} n_t = q_t k_t \phi_t (\sigma_t + \sigma_{q,t})$ .

not affect incentives. Lemma 4 in the Online Appendix formalizes this result. The counterpart of this result is that the planner's allocation will also be renegotiation proof, as we'll see in Section 4.

**Households' problem.** Households have a value function

$$V_t(w_t) = \frac{(\zeta_t w_t)^{1-\gamma}}{1-\gamma}$$

where  $\zeta$  captures their endogenously stochastic investment possibilities. It depends only on the history of aggregate shocks  $Z$  with law of motion

$$\frac{d\zeta_t}{\zeta_t} = \mu_{\zeta,t}dt + \sigma_{\zeta,t}dZ_t \quad (13)$$

which we must find in equilibrium. Analogously to intermediaries, we can interpret  $\zeta^{-1}$  as the cost of delivering utility  $h_t = ((1-\gamma)V_t)^{\frac{1}{1-\gamma}}$  measured in consumption units to households.

After some algebra, the associated HJB equation for  $\zeta$  is

$$\frac{\rho}{1-1/\psi} = \max_{\tilde{c}_h, \sigma_w} \frac{\tilde{c}_h^{1-1/\psi}}{1-1/\psi} \zeta_t^{1/\psi-1} + r_t + \sigma_w \pi_t - \tilde{c}_h + \mu_{\zeta,t} - \frac{\gamma}{2} \sigma_{\zeta,t}^2 - \frac{\gamma}{2} \sigma_w^2 + (1-\gamma) \sigma_{\zeta,t} \sigma_w \quad (14)$$

**Value of transfers.** Since  $T$  only depends on the history of aggregate shocks  $Z$ , we can write

$$\frac{dT_t}{T_t} = \mu_{T,t}dt + \sigma_{T,t}dZ_t \quad (15)$$

In equilibrium  $T$  must satisfy a no-arbitrage pricing equation

$$\frac{q_t \tau_t^k}{T_t} + \mu_{T,t} + g_t + \sigma_t \sigma'_{T,t} - r_t = (\sigma_{T,t} + \sigma_t) \pi_t \quad (16)$$

**Recursive equilibrium.** Since contracts are linear in  $x_{i,t}$ , and the economy is scale invariant to the level of capital  $k_t$ , we can use

$$X_t = \frac{\int_{\mathbb{I}} x_{i,t} di}{k_t}$$

as an endogenous aggregate state variable.  $X_t$  captures the aggregate utility promised to intermediaries (normalized by  $k_t$ ), and is the same endogenous aggregate state variable that the planner's problem will use, which makes comparisons straightforward. Market clearing conditions can be written:

$$\tilde{c}_h(q_t + T_t - \xi_t X_t) + \hat{c}_t X_t = a - \iota_t(g_t) \quad [consumption\ goods] \quad (17)$$

$$\hat{k}_t = \frac{1}{X_t} \quad [capital] \quad (18)$$

Using Ito's lemma and the equilibrium conditions  $\hat{k}_t X_t = 1$  and  $q_t = \iota'_t(g_t)$ , we get a law of motion for  $X_t$

$$\frac{dX_t}{X_t} = \mu_{X,t} dt + \sigma_{X,t} dZ_t \quad (19)$$

$$\begin{aligned} \mu_{X,t} &= \frac{\rho}{1 - 1/\psi} - \frac{\hat{c}_t^{1-1/\psi}}{1 - 1/\psi} + \frac{\gamma}{2} \sigma_{x,t}^2 + \frac{\gamma}{2} (\hat{c}_t^{-1/\psi} \phi_t \frac{\iota'_t(g_t) \nu_t}{X_t})^2 - g_t - \sigma_t \sigma_{x,t} + \sigma_t^2 \\ \sigma_{X,t} &= \sigma_{x,t} - \sigma_t \end{aligned}$$

We look for an equilibrium with state variables  $X_t$  and  $Y_t$ , where equilibrium objects such as  $q$ ,  $T$ ,  $\xi$ ,  $\zeta$  are functions of  $(X, Y)$ . Recall that several features of the environment, such as  $\nu_t$ ,  $\sigma_t$ ,  $\iota_t(g)$ , or  $\phi_t$  are already functions of the exogenous state variable  $Y_t$ . In addition, for this to work it must be the case that taxes also share the same state variables, i.e.  $\tau_t^k = \tau^k(X_t, Y_t)$ . This will be the case both for the unregulated competitive equilibrium and for the implementation of the optimal allocation. We can then use Ito's lemma to transform equilibrium conditions into a system of second order PDEs. The Online Appendix shows the solution method in detail.

### 3.2 Asset prices and financial amplification channel

Intermediaries' FOC with respect to  $\hat{k}$ , together with  $n_t = \xi_t x_t$ , and the market clearing condition for capital gives us a pricing equation for capital

$$\underbrace{\frac{a - \iota_t(g_t)}{q_t} + g_t + \mu_{q,t} + \sigma_t \sigma'_{q,t} - (r_t + \tau_t^k) - (\sigma_t + \sigma_{q,t}) \pi_t}_{\text{risk-adjusted expected excess return} \equiv \alpha_t} = \underbrace{\gamma \frac{q_t k_t}{n_t} (\tilde{\phi}_t \nu_t)^2}_{\text{id. risk premium}} \quad (20)$$

Although the market price of idiosyncratic risks  $\{W_i\}$  is zero (they can be aggregated away), capital must pay a premium for this risk. Because of the moral hazard problem, intermediaries must be exposed to idiosyncratic risk proportionally to the value of capital they manage, as in (7). This is costly because intermediaries are risk averse, so they will demand a premium for holding capital.<sup>25</sup> A large excess return  $\alpha_t$  implies a low price of capital, and therefore low investment and growth through  $\iota'_t(g_t) = q_t$ .<sup>26</sup>

Financial conditions affect the economy through equation (20). During periods of instability with high idiosyncratic risk  $\nu_t$ , or when financial frictions are tight (high  $\tilde{\phi}_t$ ), capital must yield a large excess return  $\alpha_t$ . In addition, if after a bad aggregate shock financial losses are concentrated on the balance sheets of intermediaries ( $n_t$  falls proportionally more than  $q_t k_t$ ), intermediaries will require an even larger excess return on capital  $\alpha_t$ . This creates a financial amplification channel that further depresses investment and asset prices.

<sup>25</sup>As we would expect, the premium on idiosyncratic risk vanishes if there is no moral hazard ( $\phi_t = 0$ , which implies  $\tilde{\phi}_t = 0$ ) or no idiosyncratic risk ( $\nu_t = 0$ ).

<sup>26</sup>This is the case with EIS  $\psi > 1$ , which we focus on. With EIS  $< 1$  an income effect dominates: agents feel poorer in certainty equivalent terms, so they try to accumulate more capital, leading to high  $q_t$  (the risk-free rate  $r$  falls to satisfy (20)). In the special case with EIS=1, the price of capital is constant to clear the consumption goods market.

But why would financial losses be concentrated on the balance sheets of intermediaries? Since agents are perfectly free to share aggregate risk, the market equalizes the ratio of marginal utility of wealth between intermediaries and households, i.e. the volatility of  $\frac{\xi_t^{\gamma-1} n_t^{-\gamma}}{\zeta_t^{1-\gamma} w_t^{-\gamma}}$  is zero. To understand what this implies about how financial gains or losses are shared between households and intermediaries, consider the marginal rate of substitution between intermediaries' and households' utilities (measured in consumption units)

$$\Lambda_t = \xi_t \zeta_t$$

with endogenous law of motion  $\frac{d\Lambda_t}{\Lambda_t} = \mu_{\Lambda,t} dt + \sigma_{\Lambda,t} dZ_t$ . If we increase an intermediary's utility by  $\Delta x$ , the cost of his contract increases by  $\xi_t \Delta x$ . With this money a household could obtain utility  $\Delta h_t = \xi_t \zeta_t \Delta x$ . The MRS  $\Lambda_t$  is therefore the cost of intermediaries' utility in terms of foregone utility by households, both measured in consumption units. The only difference between intermediaries and households is that intermediaries can obtain an excess return  $\alpha_t$  by investing in capital and taking on idiosyncratic risk. The cost of intermediaries' utility  $\Lambda_t$  is therefore low when they expect large excess returns on capital  $\alpha_t$  looking forward.

We can now use the FOCs for  $\sigma_x$  and  $\sigma_w$ , as well as  $n_t = \xi_t x_t$  to obtain an expression for the exposure to aggregate risk of intermediaries relative to households:

$$\sigma_{n,t} - \sigma_{w,t} = \frac{\gamma - 1}{\gamma} \sigma_{\Lambda,t} \quad (21)$$

Here we have two opposing effects. On the one hand, there is a *substitution effect*: intermediaries should have more net worth when the cost of intermediaries' utility  $\Lambda_t$  is low in order to get more "bang for the buck". But there is also an *income effect*: intermediaries need more net worth in order to achieve any given utility level when the cost of their utility  $\Lambda_t$  is high. *In the empirically relevant case with risk aversion  $\gamma$  greater than one, financial losses are concentrated on intermediaries' balance sheets after aggregate shocks that reduce the cost of providing utility to them  $\Lambda$ .* Essentially, intermediaries are willing to take large financial losses up front if they expect large excess returns  $\alpha_t$  looking forward (so  $\Lambda_t$  is low). This is the same mechanism as in Di Tella (2013), but for general aggregate shocks.

We can also think of aggregate risk sharing in terms of utility. Using  $n_t = \xi_t x_t$ , and  $w_t = \zeta_t^{-1} h_t$ , we obtain

$$\sigma_{x,t} - \sigma_{h,t} = -\frac{1}{\gamma} \sigma_{\Lambda,t} \quad (22)$$

*Utility losses are concentrated on households after aggregate shocks that reduce the cost of intermediaries' utility  $\Lambda_t$ .* This means that for the relevant case with  $\gamma > 1$ , if financial losses are disproportionately concentrated on the balance sheets of intermediaries, e.g. during a financial crisis, it is households who suffer disproportionate losses in utility terms.

Of course,  $\alpha_t$  and  $\Lambda_t$  are endogenous equilibrium objects whose behavior depends on the type of aggregate shocks hitting the economy. In Section 7 I show that uncertainty shocks that raise idiosyncratic risk  $\nu_t$  create a financial amplification channel with financial losses concentrated on

the balance sheets of intermediaries.<sup>27</sup> In general, the economy might be hit by several different types of aggregate shocks at the same time. Equations (21) and (22) allow us to understand why aggregate risk may be concentrated even if there are no limits to aggregate risk sharing, and to study the welfare and policy implications for arbitrary aggregate shocks.

**Understanding the MRS  $\Lambda_t$  better.** Since  $\Lambda$  plays an important role in the allocation of aggregate risk, it is worth studying in more detail.  $\Lambda$  correctly measures the marginal rate of substitution between intermediaries' and households' utility (in consumption units), taking into account that giving consumption to intermediaries helps relax the IC constraint (7). To understand this better, look at the FOC for intermediaries' consumption  $\hat{c}$

$$\xi_t \hat{c}_t^{-1/\psi} + \underbrace{\xi_t \frac{\gamma}{\psi} (\phi q_t \hat{k}_t \nu_t)^2 \hat{c}_t^{-2/\psi-1}}_{\text{front-loading}} = 1 \quad (23)$$

The first term captures the standard intertemporal tradeoff, while the second term captures the fact that by front-loading the intermediary's consumption, we can reduce the marginal utility of consumption and therefore make stealing less attractive, as shown in the IC constraint (7). This is reflected in the expression for the intermediary's equity stake  $\tilde{\phi}_t = \xi_t \hat{c}_t^{-1/\psi} \phi_t < \phi_t$ . If we ignored the second term, we would get  $\tilde{\phi}_t = \phi_t$ . In contrast, the FOC for households' consumption

$$\tilde{c}_{h,t}^{-1/\psi} \zeta_t^{1/\psi-1} = 1 \quad (24)$$

features only the standard consumption smoothing tradeoff. Putting the FOC for  $\hat{c}$  and  $\tilde{c}_h$  together, and using  $\hat{c}_{h,t} = c_t/h_t$  (analogous to  $\hat{c}_t = c_t/x_t$  for intermediaries), we obtain:

$$\Lambda_t = \frac{\hat{c}_{h,t}^{-1/\psi}}{\hat{c}_t^{-1/\psi} + \frac{\gamma}{\psi} (\phi_t \nu_t (g_t) \frac{\nu_t}{X_t})^2 \hat{c}_t^{-2/\psi-1}} \quad (25)$$

The numerator is the marginal utility of households' consumption (in consumption units),  $\hat{c}_h^{-1/\psi} = \partial_{c_h} h_t$ . The denominator captures the marginal utility for intermediaries consumption  $\hat{c}^{-1/\psi}$  plus the benefit of relaxing the IC constraint. This implies that while the ratio of marginal utility of wealth  $\frac{\xi_t^{\gamma-1} n_t^{-\gamma}}{\zeta_t^{1-\gamma} w_t^{-\gamma}}$  is equalized across aggregate states, this is not true for the ratio of marginal utility of consumption  $\frac{\partial_c f(c_t, U_t)}{\partial_c f(c_{h,t}, V_t)}$ , as would be the case in a standard model with complete markets. This is because incentives to distort the consumption smoothing margin to improve idiosyncratic risk sharing depend on the aggregate state of the economy (if they were invariant to aggregate shocks,  $\frac{\partial_c f(c_t, U_t)}{\partial_c f(c_{h,t}, V_t)}$  would actually be equalized across aggregate states). This feature of long term contracts plays an important role in the welfare analysis, since private contracts internalize the relative value of relaxing the IC constraints across aggregate states.

<sup>27</sup>This coincides with results in Di Tella (2013).

## 4 Planner's Problem

In this section I characterize the best allocation that can be achieved by a social planner who faces the same informational frictions as the market. Hidden trade creates an externality: intermediaries don't internalize that by demanding capital and bidding up its price, they force others to bear more idiosyncratic risk. The socially optimal allocation can be implemented by a tax on assets.

### 4.1 Setting

Consider a social planner who faces the same informational frictions as private agents in the market. He can a) control households' consumption; b) give consumption and capital to intermediaries to manage, but they can secretly divert it; c) give capital and consumption goods to investment firms and order them to deliver a flow of new capital. As in the competitive equilibrium, intermediaries and firms have access to hidden trade in capital.<sup>28</sup> An intermediary with a flow of stolen capital  $k_{i,t}s_{i,t}$  can sell it to a firm at a competitive black market price  $\tilde{q}_t$ . The firm will produce less new capital and present the stolen capital to the planner, so that the hidden trade is not detected.

To formalize this, consider an investment firm that receives an order to use  $k_t$  units of capital and  $\iota_t(g_t)k_t$  consumption goods to deliver a flow of new capital  $g_t k_t$ . It can instead buy a flow of stolen capital  $k_t s$  and do actual investment  $k_t \iota_t(\tilde{g})$  in order to maximize its surplus consumption (that it rebates to its owners)

$$\begin{aligned} \max_{s, \tilde{g}} \quad & \iota_t(g_t)k_t - \iota_t(\tilde{g})k_t - \tilde{q}_t s k_t \\ \text{st :} \quad & (\tilde{g} + s)k_t = g_t k_t \end{aligned}$$

Optimality implies  $\tilde{q}_t = \iota'_t(\tilde{g})$ , so to implement investment rate  $g_t$  and no stealing in equilibrium,  $s_t = 0$ , the black market price of capital must be

$$\tilde{q}_t = \iota'_t(g_t) \tag{26}$$

Notice this is precisely the equilibrium price of capital in the competitive equilibrium, which is consistent with this environment.

A plan  $\mathcal{P} = (c_h, g, k, \{c_i, k_i\}_{i \in [0,1]})$  is a consumption stream for the representative household  $c_h$  and a growth rate  $g$  and aggregate capital  $k$ , which can depend on the history of aggregate shocks  $Z$ ; and consumption and capital  $(c_i, k_i)$  for each intermediary  $i$ , which can depend also on his history of idiosyncratic outcomes. Faced with a feasible plan  $\mathcal{P}$ , each intermediary chooses a stealing plan  $s_i$  and gets consumption  $\tilde{c}_i = c_i + \phi \tilde{q}_t k_i s_i$ . As in the private problem, it is optimal to implement no stealing always,  $s_i = 0$ . A plan  $\mathcal{P}$  is *feasible* if it satisfies the aggregate consistency conditions

$$c_{h,t} + \int_{\mathbb{I}} c_{i,t} di = (a - \iota_t(g_t))k_t \tag{27}$$

---

<sup>28</sup>See Farhi et al. (2009) or Kehoe and Levine (1993).

$$\int_{\mathbb{I}} k_{i,t} = k_t \quad (28)$$

and aggregate capital follows the law of motion

$$dk_t = g_t k_t dt + \sigma_t k_t dZ_t \quad (29)$$

A feasible plan is *incentive compatible* if choosing  $s_i = 0$  is optimal for every intermediary:

$$0 \in \arg \max_s U(c_i + \phi'(g)k_i s) \quad (30)$$

This IC constraint is the same as the IC in private contracts (4), except that the planner internalizes that by controlling  $g$  he can relax the moral hazard problem. This is the source of inefficiency in this model. Let  $\mathbb{ICP}$  be the set of incentive compatible plans. Given initial utility levels for each intermediary  $\{u_i^0\}_{i \in [0,1]}$ , an incentive compatible plan  $\mathcal{P}$  is *optimal* if it maximizes households' utility subject to delivering utility  $u_i^0$  to each intermediary:

$$\begin{aligned} & \max_{\mathcal{P} \in \mathbb{ICP}} U(c_h) \\ & st : \quad U_i(c_i) = u_i^0 \end{aligned}$$

## 4.2 A recursive formulation of the planner's problem

Just as in the competitive equilibrium, we look for an optimal mechanism that is recursive in the continuation utility of intermediaries  $\{U_i\}_{i \in \mathbb{I}}$  and the aggregate state variables. Each intermediary's utility still follows the law of motion given by (6), and the IC constraint is like (7) with  $q_t$  replaced by  $\tilde{q}_t = \iota'_t(g_t)$

$$\tilde{\sigma}_{U,i,t} \geq f_c(c_{i,t}, U_{i,t}) \phi_t \iota'_t(g_t) k_{i,t} \nu_t = \frac{c_{i,t}^{-1/\psi}}{((1-\gamma)U_{i,t})^{\frac{\gamma-1/\psi}{1-\gamma}}} \phi_t \iota'_t(g_t) k_{i,t} \nu_t \geq 0 \quad (31)$$

and it will be binding in the optimal allocation.

Introduce  $x_{i,t} = ((1-\gamma)U_{i,t})^{\frac{1}{1-\gamma}}$  as in the private contract, with  $c_{i,t} = \hat{c}_{i,t} x_{i,t}$  and  $k_{i,t} = \hat{k}_{i,t} x_{i,t}$ , and  $\sigma_{U,i,t} = \sigma_{x,i,t} (1-\gamma)U_{i,t}$ . We can verify that, just as in the private contract, the planner will choose the same  $\hat{c}_{i,t} = \hat{c}_t$ ,  $\hat{k}_{i,t} = \hat{k}_t$ , and  $\sigma_{x,i,t} = \sigma_{x,t}$  for all intermediaries. The planner's problem must be recursive in the same endogenous state variable as the competitive equilibrium  $X_t = \frac{\int_{\mathbb{I}} x_{i,t} di}{k_t}$  which captures the aggregate continuation utility of intermediaries, and the exogenous state variable  $Y$ . From the consistency conditions (27) and (28) we obtain  $c_{h,t} = (a - \iota_t(g_t) - \hat{c}_t X_t) k_t$  and  $\tilde{k}_t = X_t^{-1}$ . Thanks to homothetic preferences and the linear technology, the planner's value at time  $t$  then takes the following power form

$$\frac{(S_t k_t)^{1-\gamma}}{1-\gamma}$$

for some process  $S_t$  which depends only on the history of aggregate shocks  $Z$ .  $S_t$  captures the planner's value (households' utility) in consumption units, normalized by capital:  $S_t = \frac{((1-\gamma)V_t)^{\frac{1}{1-\gamma}}}{k_t} = \frac{h_t}{k_t}$ . It is analogous to intermediaries' continuation utility  $X_t = \frac{\int_1 x_{i,t} di}{k_t}$ . Likewise, define  $\hat{c}_{h,t} = c_{h,t}/h_t$ , analogous to  $\hat{c}_t = c_t/x_t$  for intermediaries. We look for a value function  $S$  and the policy functions  $\hat{c}$ ,  $g$ , and  $\sigma_x$ , all functions of  $(X, Y)$ , and the law of motion of  $X$  is given by (19). The HJB equation associated to the planner's problem is

$$\frac{\rho}{1-1/\psi} = \max_{g, \hat{c}, \sigma_x} \frac{(a - \iota(g) - \hat{c}X)^{1-1/\psi}}{1-1/\psi} S^{1/\psi-1} + \mu_S + g - \frac{\gamma}{2}\sigma_S^2 - \frac{\gamma}{2}\sigma^2 + (1-\gamma)\sigma_S\sigma \quad (32)$$

where  $\mu_S$  and  $\sigma_S$  are obtained from Ito's lemma on  $S(X, Y)$ . The planner's problem boils down to solving a second order PDE for  $S(X, Y)$ . The Online Appendix describes the procedure in detail.

The planner's allocation is renegotiation-proof. The only way of delivering more utility to intermediaries is to reduce the utility of the household, conditional on the exogenous aggregate state  $Y$ . In other words,  $S'_X(X, Y) < 0$  for all  $(X, Y)$ . Intuitively, the planner can always reduce intermediaries' consumption and increase households'. This gives more utility to households (the planner's objective function), and increases intermediaries' promised utility  $X$  (see (19)). If  $S'_X(X, Y) > 0$  the planner would benefit from this deviation.<sup>29</sup> This is the planner's counterpart of the renegotiation-proofness of private contracts.

### 4.3 Externality

Hidden trade creates an externality in the competitive equilibrium. Because intermediaries cannot be prevented from trading capital, the private benefit of stealing depends on the value of capital,  $q_t = \iota'_t(g_t)$ . The social planner is willing to give up investment/growth  $g_t$  in order to reduce the private benefit of stealing and therefore relax the constraints on idiosyncratic risk sharing. This is reflected in the FOC for  $g$ :

$$\underbrace{\hat{c}_{h,t}^{-1/\psi} \iota'_t(g_t)}_{\partial_{c_h}(Sk)} (1 + \eta_t) = \underbrace{S_t + \Lambda_t X_t}_{\partial_k(Sk)} \quad (33)$$

with

$$\eta_t = \frac{\Lambda_t X_t}{\hat{c}_{h,t}^{-1/\psi}} \gamma (\hat{c}_t^{-1/\psi} \phi_t \frac{\nu_t}{X_t})^2 \iota''_t(g) \quad (34)$$

Here  $\Lambda = -S_X$  is the MRS between intermediaries' and households' utility (recall in the competitive equilibrium we had  $\Lambda = \xi\zeta$ ). The rhs of (33) captures the marginal benefit of having more capital, as we would expect. The first term on the lhs captures the marginal utility cost of reducing households' consumption to increase investment. The second term  $\eta_t$  captures the externality. Higher investment

---

<sup>29</sup> As we'll see below, the FOC (37) establishes  $S'_X = -\Lambda = \frac{\hat{c}_{h,t}^{-1/\psi}}{\hat{c}_t^{-1/\psi} + \frac{\gamma}{\psi} (\phi_t \iota'_t(g_t) \frac{\nu_t}{X_t})^2 \hat{c}_t^{-2/\psi-1}} > 0$ .



increases the marginal cost of capital  $\iota'_t(g_t)$  and therefore raises the private benefit of stealing. The planner realizes that if he wants to raise investment, he must expose intermediaries to more idiosyncratic risk, as in (31). Since they must be compensated for the risk, households need to give up more consumption. As a result, the actual marginal cost of producing more capital (in consumption units) is  $\iota'_t(g_t)(1 + \eta_t)$ .

Private agents in the competitive equilibrium don't internalize this tradeoff between investment and idiosyncratic risk sharing. They don't realize that when they demand capital and bid up its price, they create a moral hazard problem for everyone else. We can obtain an analogous equation for the competitive equilibrium from  $\iota'_t(g_t) = q_t$ ,  $S_t = \zeta_t(q_t + T_t - \xi_t X_t)$ , and the FOC for  $\tilde{c}_h$ :

$$\hat{c}_{h,t}^{-1/\psi} \iota'_t(g_t) \left(1 + \frac{T_t}{q_t}\right) = S_t + \Lambda_t X_t \quad (35)$$

The rhs  $S_t + \Lambda_t X_t = \hat{c}_{h,t}^{-1/\psi} (q_t + T_t)$  correctly measures the marginal value of capital in the competitive equilibrium allocation<sup>30</sup>  $\partial_k(Sk)$ , and  $\hat{c}_{h,t}^{-1/\psi}$  measures the marginal utility of households' consumption  $\partial_{c_h}(Sk)$ , so efficiency requires  $T_t/q_t = \eta_t$ . Notice that if the function  $\iota_t(g_t)$  was linear, the planner wouldn't be able to affect the price of capital by distorting  $g_t$ , so there would be no externality,  $\eta_t = 0$ .<sup>31</sup>

The externality captured in equation (33) is the only source of inefficiency. The FOC for  $\sigma_x$  yields after some algebra

$$\sigma_{x,t} - \sigma_{h,t} = -\frac{1}{\gamma} \sigma_{\Lambda,t} \quad (36)$$

as in the competitive equilibrium, and from the FOC for  $\hat{c}$  we obtain<sup>32</sup>

$$\Lambda_t = \frac{\hat{c}_{h,t}^{-1/\psi}}{\hat{c}_t^{-1/\psi} + \frac{\gamma}{\psi} (\phi_t \iota'_t(g_t) \frac{\nu_t}{X_t})^2 \hat{c}_t^{-2/\psi-1}} > 0 \quad (37)$$

which coincides with equation (25) in the competitive equilibrium. Private contracts internalize that giving intermediaries more consumption relaxes the equity constraint and improves idiosyncratic risk sharing. This means that the debt/equity margin is efficient, and private contracts evaluate the MRS between intermediaries' and households' utility  $\Lambda$  correctly. As a result, the allocation of aggregate

---

<sup>30</sup>If we integrate (20) and use (3), we get

$$q_t + T_t = \mathbb{E}_t^Q \left[ \int_t^\infty e^{-\int_t^s r_u du} (a - \iota_s(g_s) - \xi_s \gamma (\hat{c}_s^{-1/\psi} \phi_s \nu_s q_s)^2 \hat{k}_s) e^{\int_t^s (g_u - \frac{1}{2} \sigma_u^2) du + \int_t^s \sigma_u^2 dZ_u} \right]$$

Suppose we get an extra unit of capital and want to keep the whole process for  $g$  and  $x$  unchanged. The extra capital produces consumption net of investment  $a - \iota_s(g_s)$ . However, since intermediaries hold more capital, they must be exposed to more idiosyncratic risk. To keep  $x$  unchanged, we need to give them more consumption  $\xi_s \gamma (\hat{c}_s^{-1/\psi} \phi_s \nu_s q_s)^2 \hat{k}_s$ , where  $\xi_s$  already takes into account that the extra consumption also helps to partially offset the increase in idiosyncratic risk. What remains can be added to households' consumption, and the discounted expectation under  $Q$  correctly evaluates it in terms of current consumption.

<sup>31</sup>The intuition is the same as in Kehoe and Levine (1993).

<sup>32</sup> $\Lambda_t > 0$  implies  $S'_X < 0$ , so the planner's optimal allocation is renegotiation proof: we can only give more utility to households by giving less utility to intermediaries.

risk is efficient: if we fix the process for investment in the competitive equilibrium and we allow the planner to only modify consumption  $\hat{c}$  and the allocation of aggregate risk  $\sigma_x$ , he would choose not to. This is an important feature of the competitive equilibrium with long term contracts. In models with incomplete aggregate risk sharing, the MRS is not equalized across aggregate states, and the allocation of aggregate risk is inefficient.<sup>33</sup> Even with complete aggregate risk sharing, short term contracts, such as in Di Tella (2013), don't internalize how giving intermediaries more wealth/consumption can improve idiosyncratic risk sharing, so they evaluate the MRS between intermediaries' and households' utility  $\Lambda$  as the ratio of marginal utility of consumption  $\hat{c}_{h,t}^{-1/\psi}/\hat{c}_t^{-1/\psi}$ . If the wedge between this and the correct MRS is correlated with aggregate shocks, the allocation of aggregate risk is inefficient and the competitive equilibrium can be improved by a planner who only regulates the allocation of aggregate risk.<sup>34</sup>

Of course, if we compare the competitive equilibrium with the planner's optimal allocation, we will in general find different MRS  $\Lambda$ , simply because the allocations are different, i.e. for the same states  $(X, Y)$  there is a wedge  $\Lambda^{SP}/\Lambda^{CE} \neq 1$ . If this wedge is correlated with aggregate shocks, the allocation of aggregate risk in the competitive equilibrium and planner's allocation will be different:  $(\sigma_x - \sigma_h)^{CE} - (\sigma_x - \sigma_h)^{SP} = -\frac{1}{\gamma}(\sigma_\Lambda^{CE} - \sigma_\Lambda^{SP})$ . We can interpret this as an inefficient financial amplification channel, e.g. intermediaries are taking too much aggregate risk in the competitive equilibrium compared to the planner's allocation. In Section 7 I show this is in fact the case for uncertainty shocks that increase idiosyncratic risk  $\nu_t$ . However, the analysis in this section shows that even in this case there is no inefficiency in the FOC for aggregate risk sharing. The planner can only improve the allocation by dealing with the externality in (33), and once this is done there is no need to further regulate intermediaries' risk taking decisions.

#### 4.4 Optimal policy

We can implement the optimal allocation as a competitive equilibrium with a tax on assets.<sup>35</sup> If an intermediary holds  $q_t k_{i,t}$  in capital, he must pay a tax flow  $\tau_t^k q_t k_t$  to the government.<sup>36</sup>

**Proposition 1.** *The planner's optimal allocation  $\mathcal{P}$  can be implemented as part of a competitive equilibrium with a tax on asset holdings  $\tau^k$ . To implement the optimal allocation, we need to set the present value of taxes relative to the market value of capital  $T_t/q_t = \eta_t$ .*

The tax  $\tau^k$  reduces the equilibrium price of capital, as seen in the pricing equation (20). The planner is in fact using the tax  $\tau^k$  to force agents to internalize the externality, so the planner's FOC (33) and the competitive equilibrium condition (35) align. This requires  $T_t/q_t = \eta_t$ , where  $T_t k_t$  is the

<sup>33</sup>This is the case, for example, in Brunnermeier and Sannikov (2014), He and Krishnamurthy (2012, 2014).

<sup>34</sup>This means that even if price of capital is technologically fixed,  $\iota'_t = \bar{q}$ , the competitive equilibrium with short-term contracts is still inefficient.

<sup>35</sup>Notice that while trading in capital markets cannot be controlled by the planner, intermediaries' asset holdings are observable and contractible.

<sup>36</sup>The policy instrument is not unique: we could also implement the optimal allocation with other instruments that reduce asset prices without distorting other private incentives.

present value of taxes. Intuitively, the present value of future taxes reduces the equilibrium market value of capital  $q_t$ , internalizing the externality  $\eta_t$ . To balance the budget, the planner distributes the tax proceeds via lump-sum transfers, which are part of private agents' total wealth  $(q_t + T_t)k_t$  (with complete markets this is equivalent to giving agents a government asset worth  $T_t k_t$ ). The next section provides a sufficient statistic representation of the externality  $\eta_t$  in terms of equilibrium observables.

**Policy intervention vs. financial amplification channel.** It may seem surprising that the optimal policy intervention consists of taxing capital to reduce its equilibrium price, when lower asset prices are typically considered part of the financial amplification channel that creates financial crisis (e.g. fire sales). In fact, the setting here features precisely this type of financial amplification channel, as explained in Subsection 3.2. The resolution to this puzzle lies in the endogenous response of intermediaries' net worth.

To fix ideas, consider a reduced-form equity constraint that restricts idiosyncratic risk sharing. Intermediaries' are otherwise free to raise debt and share aggregate risk. Since intermediaries must retain at least a  $\tilde{\phi}_t$  equity share, their exposure to idiosyncratic risk is

$$\tilde{\sigma}_{i,n,t} \geq \tilde{\phi}_t \frac{q_t k_{i,t}}{n_{i,t}} \nu_t \quad (38)$$

The essence of the financial amplification channel in this environment is as follows. Suppose a bad aggregate shock hits the economy and the value of assets  $q_t k_{i,t}$  falls; and suppose these financial losses are disproportionately concentrated on the balance sheets of intermediaries. As a result, intermediaries' net worth  $n_{i,t}$  falls proportionally more than  $q_t k_{i,t}$ , and the constraint tightens. Intermediaries must be exposed to more idiosyncratic risk for the same capital, which drives up the required excess return on capital  $\alpha_t$  (see equation (20)), further reducing asset prices  $q_t$  and tightening the constraint even more in a feedback loop.

In contrast, the social planner is taxing capital to reduce its equilibrium price  $q_t$ , but rebates the tax proceeds to agents. This allows him to reduce  $q_t k_t$  without affecting  $n_t$ . This clearly relaxes the constraint – intermediaries are exposed to less idiosyncratic risk. The price of capital is still lower, so in both cases investment will fall. But here instead of tighter constraints that increase idiosyncratic risk, we get relaxed constraints and less idiosyncratic risk. It is this tradeoff between investment and risk sharing that the externality  $\eta_t$  in equation (33) captures.

The previous argument also shows how robust the intuition is. As long as intermediaries face an equity constraint that forces them to retain idiosyncratic risk as in (38), and the planner is able to use a tax or other such instrument to reduce the equilibrium price of capital  $q_t$  independently of intermediaries' net worth  $n_t$ , it will be advantageous to do so. This is true even if the equity stake  $\tilde{\phi}_t$  is an endogenous object (in fact, this is the case in this paper).<sup>37</sup> Of course, if we just assume

---

<sup>37</sup>Here the contract can relax the equity stake  $\tilde{\phi}_t$  by distorting the intertemporal consumption path, as discussed in Subsection 3.1 and equation (12) in particular. Reducing the price of capital  $q_t$  while keeping  $n_t$  constant improves

the reduced-form equity constraint we can't be sure that the policy intervention is consistent with the underlying contractual environment (is it a valid intervention?) or that it is optimal. The mechanism design approach in this paper allows us to see that it is indeed a valid intervention, and it is optimal.

In many models *aggregate* risk sharing is incomplete, so in addition to the externality studied here the MRS doesn't equalize across aggregate states. The planner may therefore also wish to somewhat raise the price of capital in states of the world where the constraint is very tight, as a way of transferring wealth to intermediaries in those states (indirectly improving aggregate risk sharing).<sup>38</sup> But with complete aggregate risk sharing this is never necessary. If the planner wants to affect how aggregate risk is shared, he can simply regulate intermediaries' exposure to aggregate risk without distorting the price of capital. As it turns out, there is no reason to do this here because long-term contracts correctly evaluate the MRS  $\Lambda$ , as explained in Section 4.3.

**Tax on assets vs. capital requirements.** It is useful to distinguish the tax on asset holdings from capital requirements, which are a common component of financial regulation policy in practice. The tax on assets penalizes intermediaries for large asset holdings, but doesn't affect the equity vs. debt margin. Intermediaries have private reasons to prefer debt or equity, and the planner doesn't need to interfere. Capital requirements, instead, impose minimum equity levels proportional to asset holdings:  $(n_t + e_t) \geq \lambda_t q_t k_t$ . They impose a penalty on issuing debt, but not equity, so they distort the debt/equity margin. To the extent that distorting this margin is costly, they also act as a penalty on assets, but only indirectly. In this environment, however, there is no reason to distort the debt/equity margin, so capital requirements are not optimal.

Capital requirements are often justified on the grounds that debt creates incentives for risk-shifting behavior by equity holders. However, outside equity holders don't have any moral hazard problem in this environment, so their incentives are not important. What matters is insiders' incentives, and private contracts correctly take them into account. The inefficiency in this economy does not arise from privately inefficient contracts, but rather from an externality that makes privately optimal contracts socially inefficient. Alternatively, if the government cannot commit to not bailout financial institutions such as banks, this creates incentives for excessive risk taking and may justify the use of capital requirements. This is the case in Chari and Kehoe (2013) for example. In this environment there is no need for bailouts, either ex-ante or ex-post.

**Time-consistency of optimal policy.** We established in Section 4.2 that the planner's allocation is renegotiation-proof in the sense that the only way of delivering more utility to households is to reduce intermediaries' utility, conditional on the exogenous aggregate state  $Y$  (in other words,  $S'_X < 0$ ). This means optimal policy is time-consistent. The planner cannot obtain a Pareto

---

risk sharing for a given equity stake  $\tilde{\phi}_t$ , or we can reduce the distortions in intertemporal consumption and still get the same idiosyncratic risk (or a little bit of both).

<sup>38</sup>See Lorenzoni (2008) and Davila (2015).

improvement from deviating from his plan after any history. Of course, if he prefers households over intermediaries, he has incentives to expropriate them and transfer their wealth to households. But he can't deviate and make everyone better off.

## 5 A sufficient statistic for the externality and optimal policy

We can obtain a simple sufficient statistic for the externality in terms of equilibrium observables.

**Proposition 2.** *For any competitive equilibrium, the externality satisfies the following expression:*

$$\eta_t = \alpha_t \epsilon_t \quad (39)$$

where  $\epsilon_t = \frac{\iota_t''(g_t)}{\iota_t'(g_t)}$  is the semi-elasticity of the price of capital with respect to investment/growth.

The formula (39) is true after any history, for any type of aggregate shocks, and it has a simple interpretation. The externality comes about from an un-internalized tradeoff between investment/growth and idiosyncratic risk sharing. The planner realizes that if he wants more investment he must raise the price of capital, and this results in worse idiosyncratic risk sharing. The semi-elasticity  $\epsilon_t$  captures the marginal effect of increasing  $g$  on the price of capital  $\iota'(g)$ , while  $\alpha_t$  measures the marginal cost of exposing intermediaries to more idiosyncratic risk. Recall that  $\alpha_t$  is the risk-adjusted expected excess return on capital, which compensates intermediaries for the idiosyncratic risk they must retain if they invest an extra dollar in capital. Taking them together we obtain the marginal cost of increasing  $g$  coming from idiosyncratic risk, in terms of reduced consumption for households. Expression (39) uses endogenous objects which may of course be affected by policy. However, it is always correctly measuring the size of the externality for any competitive allocation (for example, without taxes  $\tau^k = 0$ , or for the optimal taxes).

The model also provides an expression for the risk-adjusted expected excess return on capital  $\alpha_t$ . From the pricing equation for capital (20) we obtain

$$\alpha_t = \gamma \frac{q_t k_t}{n_t} (\tilde{\phi}_t \nu_t)^2 \quad (40)$$

We can use this expression to understand how the externality (and optimal policy) responds to aggregate shocks. If we take  $\epsilon$  as technologically fixed, the externality is larger after aggregate shocks that endogenously lead to weaker balance sheets for intermediaries (larger  $\frac{qk}{n}$ ), tighter financial frictions  $\tilde{\phi}$ , or more idiosyncratic risk  $\nu_t$  - or equivalently, aggregate shocks that raise the risk-adjusted expected excess return  $\alpha_t$ , e.g. downturns and financial crises. Optimal policy should therefore respond with higher taxes on assets after these aggregate shocks.

Do we really want to raise the tax on assets (and reduce their price  $q_t$ ) precisely during a financial crisis? This is not as counterintuitive as it may sound at first. We use the tax to improve risk sharing, and we definitely want to improve risk sharing during a crisis. The main problem during a crisis

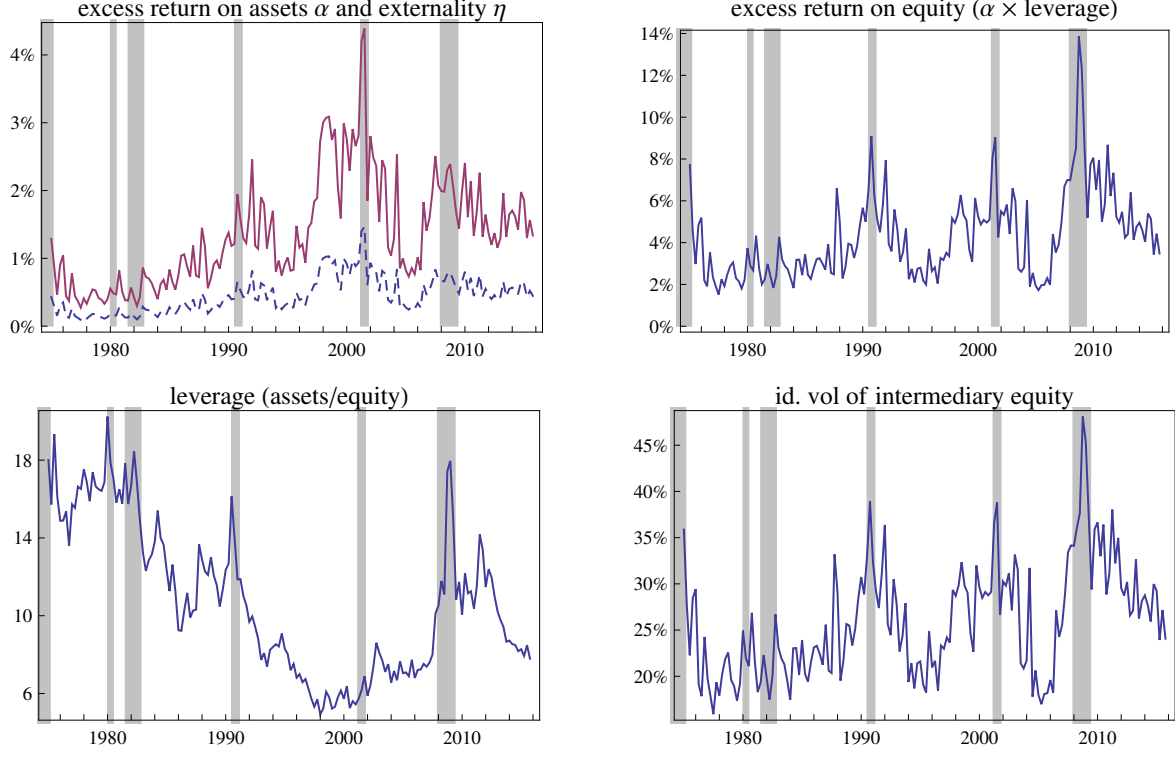


Figure 2: *Top left*: risk-adjusted expected excess return on assets  $\alpha$  (dashed) and externality  $\eta$  (solid); *Top right*: risk-adjusted expected excess return on equity  $\alpha \times \text{leverage}$ ; *Bottom left*: leverage; *Bottom right*: Idiosyncratic volatility of intermediary equity.

is that risk is very high; low asset prices merely reflect this. Keep in mind that under the optimal policy capital is only a fraction of total wealth  $(1+T/q)qk$ ; while  $qk$  may go down with higher taxes,  $T/q$  goes up to compensate. In the numerical example in Section 7 the volatility of total wealth is lower under the implementation of the planner's allocation. In addition, a time varying tax fixes incentives for the allocation of aggregate risk. By improving risk sharing and reducing excess returns during downturns, it corrects incentives for excessive exposure to aggregate risk ex-ante. Intuitively, intermediaries are not that interested in taking large financial losses during downturns if their excess returns are going to be taxed away in that state. Raising the tax on assets during a financial crisis can help avoid the crisis in the first place.<sup>39</sup>

## 5.1 Quantitative analysis

We can use market data to get a sense of the size of the externality. Since equation (39) is true after any history, and for any type of aggregate shocks, we can use it to compute the time varying externality if we have a time series for the risk adjusted expected excess return on assets  $\alpha_t$ . Alternatively, equation (40) gives us an expression for  $\alpha_t$  within the model, in terms of observables. Fix

<sup>39</sup>But remember that the optimal allocation is renegotiation-proof. The planner is not going out of his way to punish intermediaries ex-post to provide the right incentives ex-ante: it is always fixing incentives looking forward.

	baseline model	high CRRA $\gamma$	tight equity constraint $\tilde{\phi}$	high elasticity of investment cost $\epsilon$
CRRA $\gamma$	3	10	3	3
equity stake $\tilde{\phi}$	20%	20%	50%	20%
elasticity $\epsilon$	3	3	3	6
leverage $\frac{\text{assets}}{\text{total equity}}$	10.8			
id. vol. intermediary eq.	25.95%			
excess return $\alpha$	0.45%	1.51%	1.13%	0.45%
$\alpha \times \text{leverage}$	4.26%	14.21%	10.65%	4.26%
externality $\eta$	1.36%	4.52%	3.39%	2.71%

Table 1: Average values for the baseline and alternative specifications

the semi-elasticity of the cost of capital  $\epsilon = 3$  and a constant insiders' equity stake  $\tilde{\phi} = 20\%$ , both from He and Krishnamurthy (2014). The calibration of insider's retained equity stake  $\tilde{\phi} = 20\%$  is based on the common 2/20 compensation scheme for hedge funds, PE, and VC funds; and from the fact that the average equity ownership of officers and directors in the finance, insurance, and real estate sectors is 17.4%.<sup>40</sup> Set the relative risk aversion  $\gamma = 3$ . We can extend the analysis in He et al. (2015) to measure leverage in the financial sector at market values

$$\text{leverage}_t = \frac{\sum_i (\text{market equity}_{i,t} + \text{book debt}_{i,t})}{\sum_i \text{market equity}_{i,t}}$$

I use CRSP/Compustat data with SIC codes 60-67, and use quarterly data from 1975q1 to 2015q1. Notice that in the model  $\text{leverage}_t = \frac{q_t k_t}{n_t + e_t} = \frac{q_t k_t}{n_t} \tilde{\phi}_t$ . Figure 2 shows the resulting time series. The average leverage in the data is 10.8, and goes up during downturns. It was also relatively low between 1993 and 2006, and spiked during the financial crisis in 2008.

For the idiosyncratic risk of financial intermediaries I follow Herskovic et al. (2016). I run the regression

$$\Delta \ln(\text{market equity}_{i,t}) = \beta_0 + \beta_1 FF_{1,t} + \beta_2 FF_{2,t} + \beta_3 FF_{3,t} + \varepsilon_{i,t}$$

for every year, using monthly data (again for SIC codes 60-67), where  $FF_n$  are the Fama-French factors (market, HML, SMB). Idiosyncratic volatility is then computed as the standard deviation of residuals for each quarter, and annualized to obtain a series  $\nu_{equity,t}$  for the volatility of equity. Notice that in the model the volatility of total equity corresponds to  $\nu_{equity,t} = \text{leverage}_t \times \nu_t$ . Figure 2 shows the resulting time series. The average volatility in the data is 25.95%. It goes up during downturns, especially during the financial crisis in 2008.

I compute the risk-adjusted expected excess return on assets  $\alpha$  predicted by the model,  $\alpha_t = \gamma \tilde{\phi} \frac{\nu_{equity,t}^2}{\text{leverage}_t}$ , and the size of the externality  $\eta_t$ .<sup>41</sup> Figure 2 shows the results. The average excess

<sup>40</sup>The retained equity stake is unlikely to be constant. In fact, the model predicts that it should become smaller during periods of financial distress. With more data we could in principle build a time series for insiders' equity stake  $\tilde{\phi}_t$  and incorporate it into the analysis in a straightforward way.

<sup>41</sup>In the next Section I extend the framework to incorporate heterogeneous intermediaries and asset classes.

return on assets  $\alpha_t$  is 0.45%, and the average externality  $\eta_t$  is 1.36%. They were particularly high during the dot com boom and spiked during the crash, reaching 1.46% and 4.39% respectively. They then came down and spiked up again during the financial crises in 2007, reaching roughly 0.8% and 2.39%, and remained elevated since then. It is striking that, according to the model, the externality was higher during the dot com crash than during the financial crisis. The reason is that although the idiosyncratic volatility on equity was higher during the crisis, so was the financial sectors' leverage. The unlevered idiosyncratic volatility on assets  $\nu$ , which matters for the excess return  $\alpha$ , was actually higher during the dot com crash. I also compute the excess return on equity,  $\text{leverage}_t \times \alpha_t$ , with an average of 4.26%. It goes up during downturns and spikes during the financial crisis, reaching 13.88% in 2008. This is the result of not only a high excess return on assets  $\alpha$ , but also very high leverage. Table 1 summarizes results and reports alternative specifications for high CRRA  $\gamma$ , tight equity constraints  $\tilde{\phi}$ , and high elasticity of the cost of investment  $\epsilon$ .

Is an average externality of 1.36% large or small? To put it in context, consider the required reduction in the investment share of GDP,  $I/Y$ , to reduce the marginal cost of capital by 1.36%. Assuming  $K/Y = 3$  (Jones (2015)) and  $\epsilon = 3$ , we can use Tobin's  $q$  to obtain a reduction in  $I/Y$  of 1.36 percentage points (e.g. from 20% to 18.64% of GDP). The externality computed here corresponds to an average across all asset classes. It is useful to get a sense of the overall quantitative importance of the mechanism. However, the externality is likely to vary significantly across asset classes. Some assets may require very high taxes, while others barely anything. Section 6 extends the framework to heterogenous intermediaries and asset classes.

## 5.2 Implementation of the optimal allocation.

To implement the optimal allocation we must set  $T_t/q_t = \eta_t$ . Intuitively, the present value of future taxes  $T_t$  reduces the equilibrium market value of capital  $q_t$ . This makes investment less attractive and internalizes the externality, equating the planner's FOC (33) and the CE equilibrium condition (35). While Proposition 2 provides a simple expression for the externality in terms of observable variables, it does not specify exactly how the tax on assets  $\tau_t^k$  or capital requirements should be set. In general, a time-varying tax  $\tau_t^k$  will be required. We can recover the optimal tax  $\tau_t^k$  from equation (16)

$$\tau_t^k = \eta_t \left( r_t - \mathbb{E}_t^Q \left[ \frac{d(\eta_t q_t k_t)}{\eta_t q_t k_t} \right] \right) \quad (41)$$

$$= \eta_t ((r_t + \sigma_t \pi_t - g_t) - \mu_{\eta,t} - \mu_{q,t} - \sigma_{\eta,t} \sigma_{q,t} + (\pi_t - \sigma_t)(\sigma_{\eta,t} + \sigma_{q,t})) \quad (42)$$

In a steady state ( $\mu_\eta = \mu_q = \sigma_\eta = \sigma_q = 0$ ) we would get a constant tax

---

Here I am assuming a common idiosyncratic volatility on equity  $\nu_{equity}$ , so we can write  $\alpha = \sum_i \alpha_i \frac{q_t k_{i,t}}{q_t k_t} = \sum_i \gamma \tilde{\phi} \frac{\text{market equity}_{i,t}}{\text{market equity}_{i,t} + \text{book debt}_{i,t}} \nu_{equity,t}^2 \frac{\text{market equity}_{i,t} + \text{book debt}_{i,t}}{\sum_i \text{market equity}_{i,t} + \text{book debt}_{i,t}} = \gamma \tilde{\phi} \frac{\nu_{equity,t}^2}{\text{leverage}_t}$ .



$$\tau^k = \eta(r + \sigma\pi - g)$$

If we have a structural model that gives us the stochastic process for  $r$ ,  $\pi$ ,  $q$ ,  $g$ , and  $\alpha$ , we can use (41) to actually set the optimal tax  $\tau_t^k$ . For example, if we calibrate  $r + \sigma\pi = 7\%$  to match the average stock market return,  $g = 2\%$ , and  $\eta = 1.36\%$ , we obtain a tax  $\tau^k \approx 7 bp$ .

In practice, however, it may be easier to follow a market based approach. The planner can securitize the revenue from the tax on assets  $\tau^k q k$ , and let financial markets price it at  $T_t k_t$ . It can then measure  $T$ ,  $q$ , and  $\eta$ , and adjust  $\tau_t^k$  continuously to make sure  $T_t/q_t = \eta_t$  as measured by (39).

## 6 Heterogenous assets and intermediaries

A practical concern for regulators is how to treat different asset classes (e.g. appropriate risk weighting), and different intermediaries. To address this issue, we can extend the model to incorporate heterogenous asset classes and intermediaries. The main conclusions in the baseline model go through. The sufficient statistic formula (39) is valid for each asset class, and can be used to determine regulation policies at a more desegregated level. I develop the setting in detail in the Appendix.

Suppose there are  $F \geq 1$  types of intermediaries, and  $J \geq 1$  asset classes. Assets may differ in their investment technology  $\iota_{j,t}(g_{j,t})$  or their exposure to aggregate risk  $\sigma_{j,t}$ . Each type of intermediary may be able to deal with each asset class differently, i.e. they get different idiosyncratic risk  $\nu_{i,j,t}$ , moral hazard  $\phi_{i,j,t}$ , or output flow  $a_{i,j,t}$ . Intermediary  $i$  gets observable return  $R_{i,j,t}$  per dollar invested in asset  $j$

$$dR_{i,j,t} = \left( \frac{a_{i,j,t} - \iota_{j,t}(g_{j,t})}{q_{j,t}} + g_{j,t} + \mu_{q,j,t} + \sigma_{j,t}\sigma'_{q,j,t} - \tau_{j,t}^k - s_{i,j,t} \right) dt + (\sigma_{j,t} + \sigma_{q,j,t})dZ_t + \nu_{i,j,t}dW_{i,j,t}$$

where  $W_{i,j}$  is an intermediary and asset class-specific idiosyncratic shock. Because the intermediary can secretly divert returns for asset class  $j$ , he must keep an exposure  $\tilde{\sigma}_{n,i,j,t} = \tilde{\phi}_t \nu_{i,j,t} \frac{q_{j,t} k_{i,j,t}}{n_{i,t}}$  to  $W_{i,j}$ , with  $\tilde{\phi}_{i,j,t} = \xi_{i,t} \hat{c}_{i,t}^{-1/\psi} \phi_{i,j,t}$ .<sup>42</sup> As a result, we obtain the following asset pricing equation for each asset class  $j$ :

$$\underbrace{\frac{a_{i,j,t} - \iota_{j,t}(g_{j,t})}{q_{j,t}} + g_{j,t} + \mu_{q,j,t} + \sigma_{j,t}\sigma'_{q,j,t} - (r_t + \tau_{j,t}^k) - (\sigma_{j,t} + \sigma_{q,j,t})\pi_t}_{\text{risk-adjusted excess return} \equiv \alpha_{i,j,t}} = \underbrace{\gamma \frac{q_{j,t} k_{i,j,t}}{n_{i,t}} (\tilde{\phi}_{i,j,t} \nu_{i,j,t})^2}_{\text{id. risk premium}}$$

for all  $(i, j)$  pairs such that  $k_{i,j,t} > 0$ . Intermediaries will invest more heavily in assets for which they are better suited (low  $\phi_{i,j,t}$  and  $\nu_{i,j,t}$ , or high  $a_{i,j,t}$ ). Reorganizing, we get  $a_{i,j,t} - \gamma \frac{q_{j,t} k_{i,j,t}}{n_{i,t}} (\tilde{\phi}_{i,j,t} \nu_{i,j,t})^2 q_{j,t}$

<sup>42</sup>Notice that because the asset specific risks  $\{W_{i,j}\}$  are independent there is some diversification. The total idiosyncratic volatility for intermediary  $i$  is  $\sqrt{\sum_j (\tilde{\phi}_{i,j,t} \nu_{i,j,t} \frac{q_{j,t} k_{i,j,t}}{\sum_j q_{j,t} k_{i,j,t}})^2 \left( \frac{\sum_j q_{j,t} k_{i,j,t}}{n_{i,t}} \right)}$ , so that even if  $\tilde{\phi}_{i,j,t} = \tilde{\phi}_{i,t}$  and  $\nu_{i,j,t} = \nu_{i,t}$ , we get less idiosyncratic volatility than  $\tilde{\phi}_{i,t} \nu_{i,t} \left( \frac{\sum_j q_{j,t} k_{i,j,t}}{n_{i,t}} \right)$ .

constant for all intermediaries who hold the asset. The market allocates assets to equalize the marginal benefit from output net of the cost of idiosyncratic risk. This is exactly what the planner would do, so there is no inefficiency in the allocation of assets across intermediaries. This also means that we can implement the optimal allocation with asset specific taxes  $\tau_{j,t}^k$  which treat all intermediaries the same.

But how should different asset classes be treated? The externality now takes into account how increasing the marginal cost of capital of class  $j$ ,  $\iota'_{j,t}(g_j)$ , tightens the idiosyncratic risk sharing problem of every type of intermediary:

$$\eta_{j,t} = \alpha_{j,t} \epsilon_{j,t} \quad (43)$$

where  $\alpha_{j,t} = \sum_i \alpha_{i,j,t} \frac{q_{j,t} k_{i,j,t}}{q_{j,t} k_{j,t}}$  is the value-weighted average risk-adjusted expected excess return on asset class  $j$  across all intermediaries, and  $\epsilon_{j,t} = \frac{\iota''_{j,t}(g_{j,t})}{\iota'_{j,t}(g_{j,t})}$  the semi-elasticity of  $q_{j,t}$  with respect to  $g_{j,t}$ . The excess return  $\alpha_{j,t}$  measures the cost, from idiosyncratic risk, of raising the value of assets of class  $j$ , while  $\epsilon_{j,t}$  measures how much we must raise asset values to increase the growth rate  $g_{j,t}$ . Expression (43) measures the externality for any competitive equilibrium, even if we are not implementing the planner's optimal allocation. The optimal policy must set the value of the tax on each asset class equal to the externality in that class,  $T_{j,t}/q_{j,t} = \eta_{j,t}$ .

**Proposition 3.** *With heterogenous assets classes and intermediaries, the planner's optimal allocation  $\mathcal{P}$  can be implemented with an asset-specific tax on asset holdings  $\{\tau_j^k\}$  that treats all intermediaries the same. The optimal tax internalizes the externality  $T_{j,t}/q_{j,t} = \eta_{j,t}$  satisfying (43) in equilibrium.*

Equation (43) tells us how regulators should treat different asset classes. Regulators don't need to concern themselves with the riskiness of each asset class, or even their systemic risk. Instead, the average excess return  $\alpha_{j,t}$  contains all the relevant information, and reflects both the riskiness of the asset class and the place it occupies on intermediaries' balance sheets.

We can use an appropriately modified version of equation (41) to set  $\tau_{j,t}^k$ , and use the same market based implementation in Section 5. To measure the externality on all capital, analogous to expression (39) in the previous section, we need to take into account the correlation between the excess return  $\alpha_{j,t}$  and the semi-elasticity  $\epsilon_{j,t}$ :

$$\frac{\sum_j \eta_{j,t} q_{j,t} k_{j,t}}{\sum_j q_{j,t} k_{j,t}} = \alpha_t \epsilon_t + \sum_j (\alpha_{j,t} - \alpha_t) (\epsilon_{j,t} - \epsilon_t) \frac{q_{j,t} k_{j,t}}{\sum_j q_{j,t} k_{j,t}}$$

where  $\alpha_t = \sum_j \alpha_{j,t} \frac{q_{j,t} k_{j,t}}{\sum_j q_{j,t} k_{j,t}} = \sum_i \alpha_{i,t} \frac{\sum_j q_{j,t} k_{i,j,t}}{\sum_j q_{j,t} k_{j,t}}$  is the value-weighted excess return on all capital (which can be measured across asset classes or across intermediaries), and  $\epsilon_t = \sum_j \epsilon_{j,t} \frac{q_{j,t} k_{j,t}}{\sum_j q_{j,t} k_{j,t}}$  is the value-weighted semi-elasticity of the price of capital with respect to growth. The first term on the rhs corresponds to the one in equation (39). The second term captures the value-weighted covariance between excess return  $\alpha_{j,t}$  and semi-elasticity  $\epsilon_{j,t}$ . In the special, but salient, case where

$\alpha_{j,t}$  and  $\epsilon_{j,t}$  are uncorrelated, we recover expression (39).

## 7 A numerical example

We can illustrate the theoretical results with a numerical example. The economy is hit only by uncertainty shocks that increase idiosyncratic risk  $\nu_t$ , which is the only exogenous state variable,  $Y_t = \nu_t$ , and follows an autoregressive process

$$\underbrace{d\nu_t}_{dY_t} = \underbrace{\beta(\bar{\nu} - \nu_t)}_{\mu_Y(Y_t)} dt + \underbrace{\sqrt{\nu_t}\sigma_\nu}_{\sigma_Y(Y_t)} dZ_t$$

As a convention, I will take  $\sigma_\nu < 0$ , so that we may think of  $Z$  as a “good” shock that drives idiosyncratic risk  $\nu_t$  down.

**Parameter values:** *Preferences:*  $\gamma = 5$ ,  $\psi = 5$ ,  $\rho = 0.1$ ,  $\theta = 0.01$ ; *technology:*  $a = 1$ ,  $\sigma = 0$ ,  $\iota(g) = (\exp(\epsilon(g + \delta)) - 1)\kappa/\epsilon$ ,  $\delta = 0.1$ ,  $\epsilon = 3$ ,  $\kappa = 4$ ; *moral hazard:*  $\phi = 0.25$ ; *uncertainty shock:*  $\beta = 0.1$ ,  $\bar{\nu} = 0.25$ ,  $\sigma_\nu = -0.17$ .

**Competitive equilibrium vs. social planner** Figure 3 shows that the social planner can deliver more utility to households  $S$  for any level of utility for intermediaries  $X$ . He achieves this by reducing asset prices  $q$ , which improves idiosyncratic risk sharing  $\tilde{\sigma}_n$ . This allows him to deliver utility to intermediaries at a lower cost, but requires lower investment and growth (investment has the same shape as  $q$ ). In both the unregulated competitive equilibrium and the planner’s allocation, asset prices  $q$  (and therefore investment) are lower when experts’ continuation utility  $X$  is low, and when idiosyncratic risk  $\nu$  is high. It is costly to provide incentives to intermediaries when capital is very risky relative to their continuation utility, so capital is less attractive. With  $EIS > 1$ , it is optimal to reduce investment. Notice that we can always relax the retained equity share  $\tilde{\phi}$  and improve idiosyncratic risk sharing by distorting the intertemporal consumption margin, and this is more attractive when  $X$  is low and  $\nu$  high. But the planner already improves risk sharing by reducing the price of capital, so his incentives to distort intertemporal consumption are weaker. As a result,  $\tilde{\phi}$  is larger under the planner’s allocation, and intermediaries’ exposure to idiosyncratic risk  $\tilde{\sigma}_n$  doesn’t fall as much as it would had we kept the retained equity share  $\tilde{\phi}$  unchanged.

Figure 4 shows the externality  $\eta$  produced by hidden trade. It is larger when idiosyncratic risk  $\nu$  is large and intermediaries’ utility  $X$  is low. When intermediaries are highly exposed to idiosyncratic risk the marginal cost of further increasing this exposure by raising investment and the price of capital is very large. The externality  $\eta$  can be computed both for the unregulated competitive equilibrium and the social planner’s allocation; it is a local concept that measures the wedge between the private and social FOC at any allocation (in the implementation of the planner’s allocation it is internalized by a tax on assets). The sufficient statistic (39),  $\eta = \alpha\epsilon$ , is valid in both

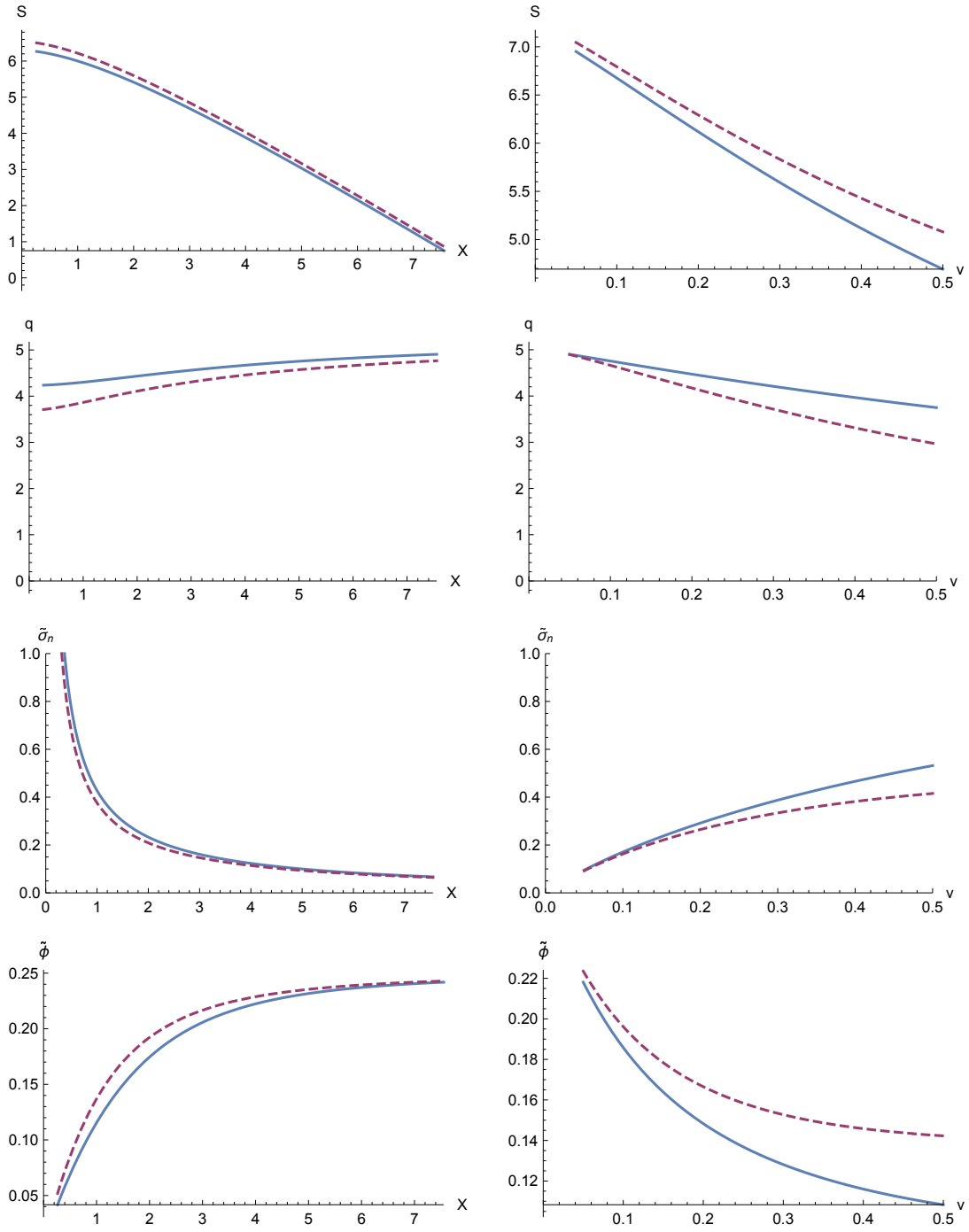


Figure 3: Households' utility  $S$ , price of capital  $q$ , intermediaries' idiosyncratic risk  $\tilde{\sigma}_n$ , and the retained equity share  $\tilde{\phi}$ , as functions of  $X$  for a fixed  $\nu = 0.25$  (left), and as functions of  $\nu$  for a fixed  $X = 1.29$  (right). Solid line is the CE, dashed line is the SP.

allocations. Since  $\epsilon$  is constant, intermediaries' excess return  $\alpha$  has the same shape as  $\eta$ . In this numerical solution, it is remarkable how similar  $\eta$  and  $\alpha$  are in both allocations. To understand this, it is useful to write  $\alpha = \gamma \tilde{\sigma}_n \tilde{\phi} \nu$ . While intermediaries' idiosyncratic risk  $\tilde{\sigma}_n$  is smaller in the planner's allocation, the retained equity stake  $\tilde{\phi}$  is larger, as explained above. As a result, while idiosyncratic risk sharing improves,  $\alpha$  is roughly unchanged.

Figure 4 also shows the MRS between intermediaries' and households' utility  $\Lambda$ . In the unregulated competitive equilibrium it is larger when intermediaries' utility  $X$  is higher and idiosyncratic risk  $\nu$  lower. To understand this, recall from expression (25) for  $\Lambda$  that giving more consumption to intermediaries gives them more utility both directly,  $\hat{c}_t^{-1/\psi}$ , and indirectly by relaxing the IC constraints and improving idiosyncratic risk sharing,  $\frac{\gamma}{\psi} (\phi_t \iota_t (g_t) \frac{\nu_t}{X_t})^2 \hat{c}_t^{-2/\psi-1}$ . This second effect is small when  $X$  is large and  $\nu$  low, because risk sharing is already relatively good. As a result, the MRS  $\Lambda$  is larger under these conditions.

This is also the reason why  $\Lambda$  is larger under the social planner's allocation. Since the planner already relaxes the IC constraint by distorting investment, the benefit of giving intermediaries more consumption is smaller, and the cost of giving them more utility is therefore larger. In fact, this also explains why the difference between the MRS  $\Lambda$  along the unregulated competitive equilibrium and the social planner's allocation is larger when idiosyncratic risk  $\nu$  is high, a fact that will play an important role in the allocation of aggregate risk. Intuitively, when intermediaries are more exposed to idiosyncratic risk the planner's intervention is more potent. If idiosyncratic risk is very small, the planner's intervention barely matters, so the MRS  $\Lambda$  is similar. It is important to remember that we are dealing with "slopes", rather than "levels". Households do get more utility under the social planner's allocation as can be seen in Figure 3. But the *marginal* cost of giving more utility to intermediaries is larger.

Figure 4 also shows how uncertainty shocks produce a financial amplification channel. After idiosyncratic risk  $\nu$  goes up, the price of capital  $q$  falls and financial losses are concentrated on the balance sheets of intermediaries,  $\sigma_n - \sigma_w > 0$ . As explained in Section 3.2, this drives the required excess return on capital  $\alpha$  further up, depressing asset prices and investment even more.

To understand why financial losses are concentrated on intermediaries, look at the behavior of the MRS  $\Lambda$ . With  $\gamma > 1$ , the FOC for aggregate risk sharing (21) says that financial losses are concentrated on intermediaries after aggregate shocks that reduce the cost of providing utility to them (shocks that reduce  $\Lambda$ ). This happens after a bad uncertainty shock, as can be seen in Figure 4 and was explained above.

Although there is no externality associated with the FOC for aggregate risk sharing, this concentration of aggregate risk is excessive. In the social planner's allocation, financial losses are less concentrated on the balance sheets of intermediaries,  $(\sigma_n - \sigma_w)^{CE} > (\sigma_n - \sigma_w)^{SP}$ . The reason for this is that the marginal cost of delivering utility to intermediaries  $\Lambda$  doesn't go down as much after an uncertainty shock in the planner's allocation. As explained above, the planner responds to higher risk  $\nu$  by lowering the price of capital  $q$  to relax the IC constraint and improve idiosyncratic

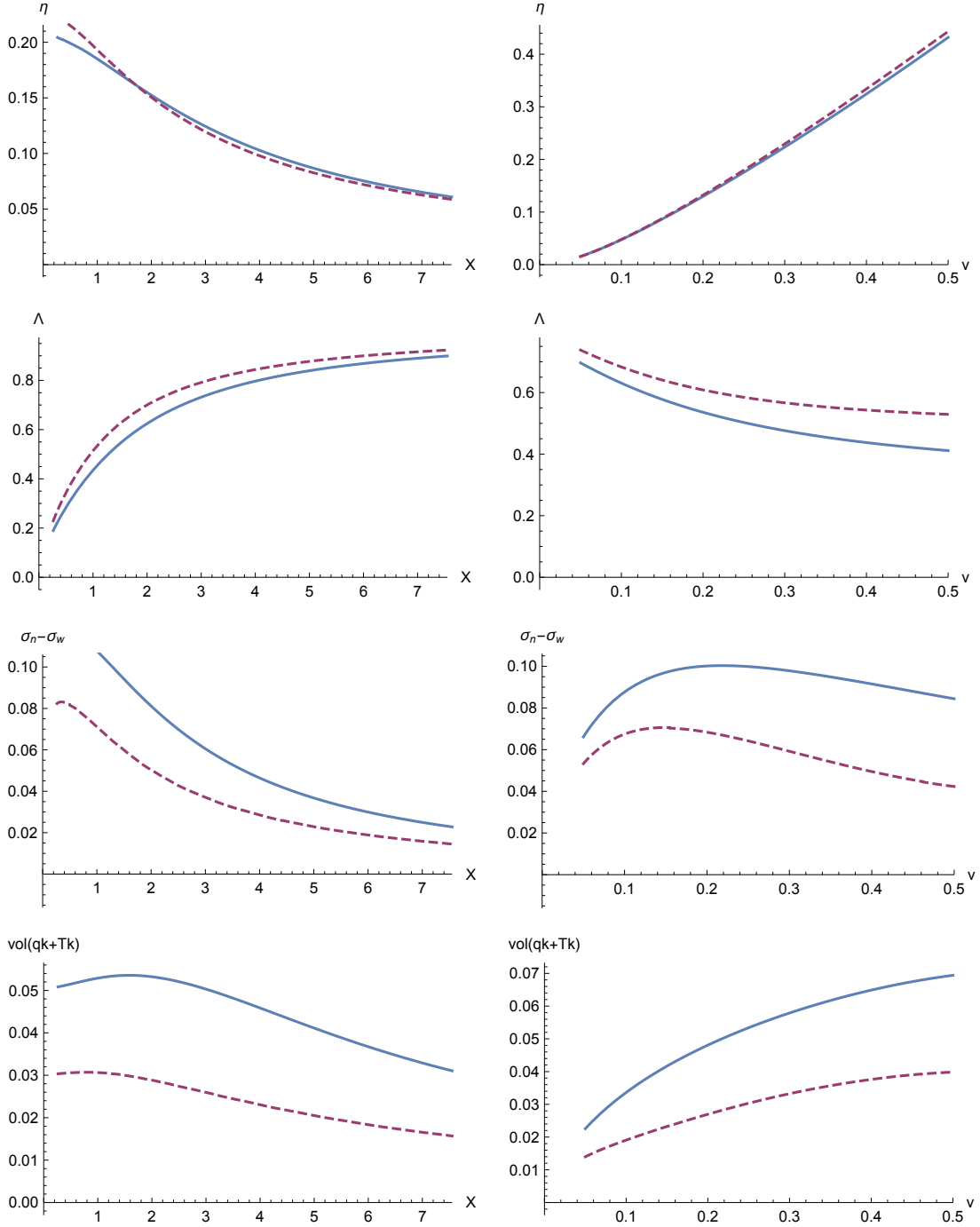


Figure 4: Externality  $\eta$ , MRS between intermediaries' and households utility  $\Lambda$ , concentration of financial risk  $\sigma_n - \sigma_w$ , and volatility of total wealth  $vol(qk + Tk)$ , as functions of  $X$  for a fixed  $\nu = 0.25$  (left), and as functions of  $\nu$  for a fixed  $X = 1.29$  (right). Solid line is the CE, dashed line is the SP.

risk sharing. Giving them more consumption still improves their risk sharing (by distorting their intertemporal consumption smoothing), but this is less valuable because idiosyncratic risk sharing is better than in the competitive equilibrium. As a result, the financial amplification channel is weaker in the implementation of the planner’s problem. Finally, notice that while the value of capital  $q$  is more sensitive to uncertainty shocks in the planner’s allocation, the volatility of total wealth  $qk + Tk$  is smaller. The larger taxes are rebated lump-sum to households, and go up in value when the value of capital falls, attenuating total financial losses.

## 8 Conclusion

In this paper I propose a model of optimal financial regulation where financial intermediaries trade capital assets on behalf of households, but must retain an equity stake for incentive reasons. This is a commonly observed financial arrangement, and widely used in models of financial crises. Financial regulation is necessary in this environment because intermediaries cannot be excluded from privately trading in capital markets. Private intermediaries don’t internalize that when they demand assets and bid up their price they force others to bear more idiosyncratic risk. A social planner would prefer to reduce asset prices, even at the cost of less investment, in order to improve risk sharing and reduce the cost of providing incentives to intermediaries.

The socially optimal allocation therefore requires a tax on assets. In fact, the externality admits a simple sufficient statistic representation that allows us to measure it using market data. I find the externality represents 1.36% of the market value of assets on average, but it spikes during downturns and financial crises, where it can reach 4.39%. While these are average values across all assets, the formula is valid for each asset class, and can be used to determine how different asset classes should be treated.

The competitive equilibrium may feature an inefficient financial amplification channel, in the sense that intermediaries may have an excessive exposure to aggregate risk compared to the socially optimal allocation. However, there is no need to directly regulate intermediaries’ exposure to aggregate risk. Once the hidden trade externality is internalized, privately optimal contracts correctly allocate aggregate risk. Likewise, while the planner wants to tax intermediaries for their asset holdings, it doesn’t want to distort the equity/debt margin (e.g. doesn’t want to use capital requirements).

## References

- Ackermann, Carl, Richard McEnally, and David Ravenscraft**, “The Performance of Hedge Funds: Risk, Return, and Incentives,” *The Journal of Finance*, 1999, *54* (3), 833–874.
- Alvarez, Fernando and Urban J Jermann**, “Efficiency, equilibrium, and asset pricing with risk of default,” *Econometrica*, 2000, *68* (4), 775–797.
- Ang, A.**, *Asset Management*, Oxford University Press, 2014.
- Bansal, R., D. Kiku, I. Shaliastovich, and A. Yaron**, “Volatility, the Macroeconomy, and Asset Prices,” *Journal of Finance*, 2014.
- Berk, J. and R. Green**, “Mutual Fund Flows and Performance in Rational Markets,” *Journal of Political Economy*, December 2004, *112* (6), 1269–1295.
- Bernanke, B., M. Gertler, and S. Gilchrist**, “The Financial Accelerator in a Quantitative Business Cycle Framework,” in J.B. Taylor and M. Woodford, eds., *Handbook of Macroeconomics*, Vol. 1, Elsevier, 1999, chapter 21, pp. 1341–1393.
- Biais, B., T. Mariotti, G. Plantin, and J.C. Rochet**, “Dynamic security design: convergence to continuous time and asset pricing implications,” *Review of Economic Studies*, 2007, *74*, 345–390.
- Bianchi, J.**, “Overborrowing and Systemic Externalities in the Business Cycle,” *American Economic Review*, December 2011, *101* (7).
- Bianchi, Javier and Enrique G Mendoza**, “Overborrowing, Financial Crises and ‘Macro-Prudential’ Policy?,” *IMF Working Papers*, 2011, pp. 1–53.
- Brunnermeier, M. and Y. Sannikov**, “A Macroeconomic Model with a Financial Sector,” *American Economic Review*, 2014, *104* (2), 379–421.
- Campbell, J. and J. Beeler**, “The Long-Run Risks Model and Aggregate Asset Prices: An Empirical Assessment,” *NBER*, 2009.
- Chari, Varadarajan V and Patrick J Kehoe**, “Bailouts, time inconsistency, and optimal regulation,” Technical Report, National Bureau of Economic Research 2013.
- Chen, QI, ITAY GOLDSTEIN, and WEI JIANG**, “Directors’ Ownership in the U.S. Mutual Fund Industry,” *The Journal of Finance*, 2008, *63* (6), 2629–2677.
- Davila, E.**, “Dissecting Fire Sale Externalities,” April 2015. working paper - NYU Stern.
- Davila, J., J. Rios-Rull, J. Hong, and P. Krusell**, “Constrained efficiency in the neoclassical growth model with uninsurable idiosyncratic shocks,” *Econometrica*, November 2012, *80*(6), 2431–2467.



- DeMarzo, P. and M. Fishman**, “Optimal Long Term Financial Contracting,” *Review of Financial Studies*, 2007, *20*, 2079–127.
- **and Y. Sannikov**, “Optimal Security Design and Dynamic Capital Structure in a Continuous-Time Agency Model,” *The Journal of Finance*, 2006, *61* (6), pp. 2681–2724.
- **, Z. He, M. Fishman, and N. Wang**, “Dynamic Agency Theory meets the Q-Theory of Investment,” 2012. forthcoming.
- Farhi, E., M. Golosov, and A. Tsyvinski**, “A Theory Liquidity and Regulation of Financial Intermediation,” *The Review of Economic Studies*, 2009, *76*, 973–992.
- Farhi, Emmanuel and Iván Werning**, “A theory of macroprudential policies in the presence of nominal rigidities,” Technical Report, National Bureau of Economic Research 2013.
- Gaspar, JOSÉ-MIGUEL, Massimo Massa, and Pedro Matos**, “Favoritism in mutual fund families? Evidence on strategic cross-fund subsidization,” *The Journal of Finance*, 2006, *61* (1), 73–104.
- Geanakoplos, J. and H Polemarchakis**, “Existence, regularity, and constrained suboptimality of competitive allocations when the asset market is incomplete,” *Essays in honor of Keneth J. Arrow*, 1986.
- Geanakoplos, John, Michael Magill, Martine Quinzii, and Jacques Dreze**, “Generic inefficiency of stock market equilibrium when markets are incomplete,” *Journal of Mathematical Economics*, 1990, *19* (1-2), 113–151.
- Gersbach, Hans and Jean-Charles Rochet**, “Aggregate investment externalities and macroprudential regulation,” *Journal of Money, Credit and Banking*, 2012, *44* (s2), 73–109.
- Gruber, J.**, “A Tax-Based Estimate of the Elasticity of Intertemporal Substitution,” *Quarterly Journal of Economics*, June 2013, *3* (1).
- Hall, B.**, “Intertemporal Substitution in Consumption,” *Journal of Political Economy*, 1988, *96* (2).
- Hart, O.**, “On the optimality of equilibrium when the market structure is incomplete,” *Journal of Economic Theory*, 1975, *11* (3), 418–443.
- He, Z.**, “Dynamic compensation contracts with private savings,” *Review of Financial Studies*, 2011.
- **and A. Krishnamurthy**, “A Model of Capital and Crises,” *Review of Economic Studies*, 2012, *79* (2), 735–777.
- He, Z and A. Krishnamurthy**, “A Macroeconomic Framework for Quantifying Systemic Risk,” January 2014. working paper.

- and **P. Kondor**, “Inefficient Investment Waves,” 2014. NBER working paper.
- He, Zhiguo and Arvind Krishnamurthy**, “Intermediary asset pricing,” *The American Economic Review*, 2013, *103* (2), 732–770.
- , **Bryan T Kelly, and Asaf Manela**, “Intermediary Asset Pricing: New Evidence from Many Asset Classes,” *Available at SSRN 2662182*, 2015.
- Herskovic, Bernard, Bryan Kelly, Hanno Lustig, and Stijn Van Nieuwerburgh**, “The common factor in idiosyncratic volatility: Quantitative asset pricing implications,” *Journal of Financial Economics*, 2016, *119* (2), 249–283.
- Jones, Charles I**, “The facts of economic growth,” Technical Report, National Bureau of Economic Research 2015.
- Kehoe, T. and D. Levine**, “Debt-Constrained Asset Markets,” *The Review of Economic Studies*, 1993, *60*, 865–888.
- Kiyotaki, N. and J. Moore**, “Credit Cycles,” *Journal of Political Economy*, 1997, *105*, 211–248.
- Korinek, A.**, “Systemic Risk-Taking: Amplification Effects, Externalities, and Regulatory Responses,” May 2012. Working Paper, University of Maryland.
- Lack, Simon**, “The Hedge Fund Mirage: The Illusion of Big Money and Why It’s Too Good to Be True,” *CFA Institute Conference Proceedings Quarterly*, 2012, *29* (4), null.
- Lorenzoni, G.**, “Inefficient Credit Booms,” *Review of Economic Studies*, July 2008, *75*(3), 809–833.
- Ma, Linlin, Yuehua Tang, and Juan-Pedro Gómez**, “Portfolio manager compensation in the US mutual fund industry,” *Finance Down Under 2014 Building on the Best from the Cellars of Finance*, 2015.
- Mulligan, C.**, “Capital, Interest, and Aggregate Intertemporal Substitution,” December 2002. NBER Working Paper 9373.
- Phalippou, Ludovic**, “Beware of venturing into private equity,” *The Journal of Economic Perspectives*, 2009, *23* (1), 147–166.
- Rampini, A. and S. Viswanathan**, “Collateral, risk management, and the distribution of debt capacity,” *Journal of Finance*, 2010, *65*, 2293–2322.
- Sannikov, Y.**, “A Continuous- Time Version of the Principal: Agent Problem,” *The Review of Economic Studies*, 2008, *75* (3), pp. 957–984.
- Stiglitz, Joseph E**, “The inefficiency of the stock market equilibrium,” *The Review of Economic Studies*, 1982, *49* (2), 241–261.

- Sun, Yeneng**, “The exact law of large numbers via Fubini extension and characterization of insurable risks,” *Journal of Economic Theory*, 2006, *126* (1), 31–69.
- Tella, S. Di**, “Uncertainty Shocks and Balance Sheet Recessions,” *Forthcoming Journal of Political Economy*, August 2013.
- **and Y. Sannikov**, “Optimal asset management contracts with hidden savings,” Feb 2014. Working paper, Stanford GSB and Princeton University.
- Vissing-Jorgensen, A.**, “Limited Asset Market Participation and the Elasticity of Intertemporal Substitution,” *Journal of Political Economy*, 2002, *110* (4), 825–853.
- Zitzewitz, Eric**, “How widespread is late trading in mutual funds?,” 2003.

# Appendix

In the first part of this Appendix I provide proofs for Propositions 1 and 2, which correspond to the baseline model. In the second part I extend the baseline model to include heterogenous asset classes and intermediaries, as in Section 6, and I provide the proof of Proposition 3. For simplicity I don't consider retirement, as in the baseline model in the paper. Proofs can be easily extended to incorporate retirement.

## Omitted proofs in the baseline model

### Proof of Proposition 1

Consider an optimal plan  $\mathcal{P}$  and the associated value function  $S$  and policy functions  $\hat{c}$ ,  $g$ ,  $\sigma_x$  and the law of motion of the endogenous state,  $\mu_X$  and  $\sigma_X$ , all functions of  $(X, Y)$ . We can build a recursive equilibrium using the same law of motion  $\mu_X$  and  $\sigma_X$ . From the FOC for growth we get

$$q = \iota'(g) \quad (44)$$

From the FOC for households' consumption we get  $\zeta = \left( \frac{a - \iota(g) - \hat{c}X}{S} \right)^{-1/\psi} = \hat{c}_h^{-1/\psi}$  and from intermediaries' FOC for  $\hat{c}$  we get  $\xi = \left( \hat{c}^{-1/\psi} + \frac{\gamma}{\psi} \left( \frac{\phi q \nu}{X} \right)^2 \hat{c}^{-2/\psi-1} \right)^{-1}$ , where we have used  $\hat{k} = X^{-1}$ . Notice that we get by construction  $\xi \zeta = \Lambda = -S_X$ , from the planner's optimality condition (37). From  $S = \zeta(q + T - \xi X)$  we get  $T = \frac{S}{\zeta} - q + \xi X$ .

We can use the representative households' HJB to pin down  $r$ , and from the FOC for  $\sigma_w$  we pin down  $\pi$ , as follows. Define  $w = (q + T - \xi X)k$ , and obtain an expression for  $\sigma_w$ . We then set  $\pi = \gamma \sigma_w - (1 - \gamma) \sigma_\zeta$ , and  $r$  so that households' HJB is satisfied. We are in effect choosing  $r$  and  $\pi$  so that  $(a - \iota(g) - \hat{c}X)k = c_h$  is the optimal choice of consumption for the household, and their wealth  $w = (q + T - \xi X)k$ . Intermediaries' FOC for  $\sigma_x$  will be satisfied automatically, because the planner's optimality condition for aggregate risk sharing (36) coincides with the competitive equilibrium's (22). Since the FOC for  $\hat{c}$  is satisfied by construction, we just need to set  $\tau^k$  so that the FOC for  $\hat{k}$  is satisfied:

$$\frac{a - \iota(g)}{q} + \mu_q + g + \sigma' \sigma_q - (r + \tau^k) - \pi(\sigma + \sigma_q) = \gamma \xi (\hat{c}^{-1/\psi} \phi \nu)^2 \frac{q}{X} \quad (45)$$

Now we want to prove that  $\xi$  will satisfy intermediaries' HJB equation. For this we will use the planner's HJB equation (32). Multiply by  $S$  on both sides, take the derivative with respect to  $X$  using the envelop theorem, and divide throughout by  $S_X$  to obtain

$$\frac{\rho}{1 - \frac{1}{\psi}} = \frac{(a - \iota(g) - \hat{c}X)^{1 - \frac{1}{\psi}}}{1 - \frac{1}{\psi}} \frac{1}{\psi} S^{\frac{1}{\psi} - 1} - \frac{(a - \iota(g) - \hat{c}X)^{-\frac{1}{\psi}} S^{\frac{1}{\psi}}}{S_X} \hat{c} + \left( g - \frac{\gamma}{2} \sigma^2 \right)$$

$$\begin{aligned}
& + \frac{S_{XY}}{S_X} \mu_Y + \frac{S_{XX}}{S_X} \mu_X X \\
& + \mu_X - \gamma(\hat{c}^{-\frac{1}{\psi}} \phi \frac{\iota'(g)}{X} \nu)^2 + \frac{1}{2} \frac{S_{XY}}{S_X} \sigma_Y^2 + \frac{1}{2} \frac{S_{XX}}{S_X} (\sigma_X X)^2 + \frac{S_{XX}}{S_X} \sigma_X^2 X + \frac{S_{XXY}}{S_X} \sigma_X X \sigma_Y \\
& + \frac{S_{XY}}{S_X} \sigma_X \sigma_Y + (1 - \gamma) \sigma \left( \frac{S_{XX}}{S_X} \sigma_X X + \frac{S_{XY}}{S_X} \sigma_Y \right) + (1 - \gamma) \sigma \sigma_X \\
& - \gamma \left( \frac{S_X}{S} \sigma_X X + \frac{S_Y}{S} \sigma_Y \right) \left( \frac{S_{XX}}{S_X} \sigma_X X + \frac{S_{XY}}{S_X} \sigma_Y + \sigma_X \right) + \frac{\gamma}{2} \left( \frac{S_X}{S} \sigma_X X + \frac{S_Y}{S} \sigma_Y \right)^2 \quad (46)
\end{aligned}$$

Now use  $-\xi\zeta = S_X$  to obtain

$$\begin{aligned}
\frac{S_{XX}}{S_X} &= \frac{\xi_X}{\xi} + \frac{\zeta_X}{\zeta}, \quad \frac{S_{XY}}{S_X} = \frac{\xi_Y}{\xi} + \frac{\zeta_Y}{\zeta}, \quad \frac{S_{XXX}}{S_X} = \frac{\zeta_{XX}}{\zeta} + 2 \frac{\xi_X}{\xi} \frac{\zeta_X}{\zeta} + \frac{\xi_{XX}}{\xi}, \\
\frac{S_{XY}}{S_X} &= \frac{\zeta_{YY}}{\zeta} + 2 \frac{\zeta_Y}{\zeta} \frac{\xi_Y}{\xi} + \frac{\xi_{YY}}{\xi}, \quad \frac{S_{XXY}}{S_X} = \frac{\zeta_{XY}}{\zeta} + \frac{\xi_Y}{\xi} \frac{\zeta_X}{\zeta} + \frac{\xi_X}{\xi} \frac{\zeta_Y}{\zeta} + \frac{\xi_{XY}}{\xi}
\end{aligned}$$

Now plug this into (46), use the definition of  $\mu_X$  and the FOC for  $\hat{c}$  in the private contract (which we already know holds), and simplify to obtain

$$\begin{aligned}
0 &= \frac{\frac{1}{\psi}}{1 - \frac{1}{\psi}} \tilde{c}_h^{1 - \frac{1}{\psi}} \zeta^{\frac{1}{\psi} - 1} + \mu_\xi + \mu_\zeta - \frac{1}{\psi} \frac{\hat{c}^{1 - \frac{1}{\psi}}}{1 - \frac{1}{\psi}} + \frac{\gamma}{2} \sigma_X^2 - \gamma \left( \frac{1}{2} - 1/\psi \right) (\hat{c}^{-\frac{1}{\psi}} \phi \frac{\iota'(g)}{X} \nu)^2 \\
&+ \sigma_\xi \sigma_\zeta + \sigma_X (\sigma_\xi + \sigma_\zeta) + (1 - \gamma) \sigma (\sigma_\xi + \sigma_\zeta) \\
&- \gamma \sigma_S (\sigma_\xi + \sigma_\zeta + \sigma_X) + \frac{\gamma}{2} \sigma_S^2
\end{aligned}$$

Now from household's HJB and using  $\sigma_w = \sigma_S - \sigma_\zeta + \sigma$  we get

$$\frac{\rho}{1 - \frac{1}{\psi}} = \frac{1}{\psi} \frac{\tilde{c}_h^{1 - \frac{1}{\psi}}}{1 - \frac{1}{\psi}} \zeta^{\frac{1}{\psi} - 1} + r + \frac{\gamma}{2} (\sigma_S - \sigma_\zeta + \sigma)^2 + \mu_\zeta - \frac{\gamma}{2} \sigma_\zeta^2$$

which we plug into our expression. After some algebra using  $\sigma_S = \sigma_X + \frac{1}{\gamma}(\sigma_\xi + \sigma_\zeta)$  and  $\sigma_x = \sigma_X + \sigma$ , as well as the FOC for  $\hat{c}$  and  $\sigma_x$ , we get

$$\begin{aligned}
& \gamma \xi (\hat{c}^{-\frac{1}{\psi}} \phi \frac{\iota'(g)}{X} \nu)^2 - \hat{c} \\
& + \xi \left\{ r + \frac{\hat{c}^{1 - \frac{1}{\psi}}}{1 - \frac{1}{\psi}} - \frac{\rho}{1 - \frac{1}{\psi}} - \frac{\gamma}{2} (\hat{c}^{-\frac{1}{\psi}} \phi \frac{\iota'(g)}{X} \nu)^2 - \mu_\xi + \sigma_x \pi + \sigma_\xi \pi - \frac{\gamma}{2} \sigma_x^2 - \sigma_\xi \sigma_x \right\} = 0
\end{aligned}$$

Because  $\tau^k$  is chosen so that the pricing equation for capital holds we get

$$\gamma \xi (\hat{c}^{-\frac{1}{\psi}} \phi \frac{\iota'(g)}{X} \nu)^2 = \frac{q}{X} \left( \frac{a - \iota(g)}{q} + \mu_q + g + \sigma' \sigma_q - (r + \tau^k) - \pi(\sigma + \sigma_q) \right)$$

and plugging this in, we obtain experts' HJB.

Finally, we just need to check that the pricing equation for taxes is satisfied. First, use the planner's HJB and households' HJB to obtain a version of the dynamic budget constraint of the household. Write  $S = \zeta(q + T - \xi X)$ ,  $w = (q + T - \xi X)k$ , and then

$$\begin{aligned} & q\mu_q + T\mu_T - \xi X(\mu_\xi + \mu_X + \sigma_\xi \sigma_X) + g(q + T - \xi X) + \sigma(q\sigma_q + T\sigma_T - \xi X(\sigma_\xi + \sigma_X)) \\ &= r(q + T - \xi X) + \pi(q\sigma_q + T\sigma_T - \xi X(\sigma_\xi + \sigma_X) + \sigma(q + T - \xi X)) - \tilde{c}_h(q + T - \xi X) \end{aligned}$$

Multiply experts' HJB by  $X$  to obtain

$$\begin{aligned} & a - \iota(g) - \hat{c}X + q(g + \mu_q + \sigma\sigma_q - (r + \tau^k) - (\sigma + \sigma_q)\pi) \\ & + \xi X \left\{ r + \frac{1}{1 - \frac{1}{\psi}}(\hat{c}^{1 - \frac{1}{\psi}} - \rho) - \frac{\gamma}{2}\sigma_x^2 - \frac{\gamma}{2}(\hat{c}^{-\frac{1}{\psi}}\phi\frac{\iota(g)}{X}v)^2 + \sigma_x(\pi - \sigma_\xi) - \mu_\xi + \sigma_\xi\pi \right\} = 0 \end{aligned}$$

Combining these two expressions, and using the definition of  $\mu_X$ ,  $\sigma_X$ , and  $\tilde{c}_h = \frac{a - \iota(g) - \hat{c}X}{q + T - \xi X}$  we get the pricing equation for taxes.

Comparing the planner's optimality condition for  $g$  (33) with the equilibrium condition (35) we obtain  $T_t/q_t = \eta_t$ . This completes the proof.

## Proof of Proposition 2

Use expression (34) for  $\eta$

$$\eta_t = \frac{\Lambda_t X_t}{\hat{c}_{h,t}^{-1/\psi}} \gamma(\hat{c}_t^{-1/\psi} \phi_t \frac{\nu_t}{X_t})^2 \iota_t''(g)$$

Use  $\zeta_t = \hat{c}_{h,t}^{-1/\psi}$  and  $\Lambda_t = \xi_t \zeta_t$  to get

$$\eta_t = \xi_t X_t \gamma(\hat{c}_t^{-1/\psi} \phi_t \frac{\nu_t}{X_t})^2 \iota_t''(g)$$

$$\eta_t = \frac{1}{\xi_t X_t} \gamma(\xi_t \hat{c}_t^{-1/\psi} \phi_t \nu_t)^2 \iota_t''(g)$$

Now use  $\tilde{\phi}_t = \xi_t \hat{c}_t^{-1/\psi} \phi_t$ , and multiply and divide by  $\iota_t'(g_t)$  to get

$$\eta_t = \frac{\iota_t'(g_t)}{\xi_t X_t} \gamma(\tilde{\phi}_t \nu_t)^2 \frac{\iota_t''(g)}{\iota_t'(g_t)}$$

Now recall  $q_t = \iota_t'(g_t)$ , and  $X_t = \int_{\mathbb{I}} x_{i,t} di$ , so  $\xi_t X_t = n_t/k_t$ . Plug this in to get

$$\eta_t = \frac{q_t k_t}{n_t} \gamma(\tilde{\phi}_t \nu_t)^2 \frac{\iota_t''(g)}{\iota_t'(g_t)}$$

Finally, recall  $\alpha_t = \frac{q_t k_t}{n_t} \gamma (\tilde{\phi}_t \nu_t)^2$  and the definition  $\epsilon_t = \frac{\iota_t''(g)}{\iota_t'(g_t)}$  to get

$$\eta_t = \alpha_t \epsilon_t$$

This completes the proof.

## Heterogenous asset classes and intermediaries

Each intermediary has continuation utility

$$dU_{i,t} = -f(c_{i,t}, U_{i,t})dt + \sigma_{U,i,t}dZ_t + \sum_j \tilde{\sigma}_{U,i,j,t}dW_{j,t} \quad (47)$$

The incentive compatibility constraint requires that we expose the intermediary to idiosyncratic risk in each of his asset classes

$$\tilde{\sigma}_{U,i,j,t} \geq \partial_c f(c_{i,t}, U_{i,t}) \phi_{i,t} q_{j,t} k_{i,j,t} \nu_{i,j,t} = \frac{c_{i,t}^{-1/\psi}}{((1-\gamma)U_{i,t})^{\frac{\gamma-1/\psi}{1-\gamma}}} \phi_{i,j,t} q_{j,t} k_{i,j,t} \nu_{i,j,t} \geq 0 \quad (48)$$

The process  $\xi_i$  depends on intermediary  $i$ 's type (we get one process  $\xi$  for each intermediary type). The HJB equation must then be adjusted slightly

$$\begin{aligned} r_t \xi_{i,t} = & \min_{\hat{c}, \hat{k}, \sigma_x} \hat{c} - \sum_j q_{j,t} \hat{k}_j \alpha_{i,j,t} + \xi_{i,t} \left\{ \frac{1}{1 - \frac{1}{\psi}} (\rho - \hat{c}^{1-1/\psi}) - \sigma_x \pi_t \right. \\ & \left. + \mu_{\xi,i,t} - \sigma_{\xi,i,t} \pi_t + \frac{1}{2} \gamma \sigma_x^2 + \sum_j \frac{1}{2} \gamma \left( \hat{c}^{-1/\psi} \phi_{i,j,t} q_{j,t} \hat{k}_j \nu_{i,j,t} \right)^2 + \sigma_{\xi,i,t} \sigma_x \right\} \end{aligned} \quad (49)$$

The FOC for each  $\hat{k}_j$  gives us the asset pricing equation for capital for all  $(i, j)$  such that  $\hat{k}_{i,j,t} > 0$ ,

$$\underbrace{\frac{a_{i,j,t} - \iota_{j,t}(g_{j,t})}{q_{j,t}} + g_{j,t} + \mu_{q,j,t} + \sigma_{j,t} \sigma'_{q,j,t} - (r_t + \tau_{j,t}^k) - (\sigma_{j,t} + \sigma_{q,j,t}) \pi_t}_{\text{risk-adjusted excess return} \equiv \alpha_{i,j,t}} = \underbrace{\gamma \frac{q_{j,t} k_{i,j,t}}{n_{i,t}} (\tilde{\phi}_{i,j,t} \nu_{i,j,t})^2}_{\text{id. risk premium}} \quad (50)$$

where  $\tilde{\phi}_{i,j,t} = \xi_{i,t} \hat{c}_{i,t}^{-1/\psi} \phi_{i,j,t}$ . Note that now the intermediary might have to keep different equity stakes for each asset class. If  $\phi_{i,j,t} = \phi_{i,t}$  for all  $j$ , the equity stake is common across asset classes, and we can implement the optimal contract with an equity constraint. Otherwise, we need an incentive scheme that treats the returns on different asset classes differently.

The FOC for investment in each asset class is

$$\begin{aligned} \iota'_{j,t}(g_{j,t}) &= q_{j,t} \\ \implies \hat{c}_{h,t}^{-1/\psi} \iota'_{j,t}(g_{j,t}) (1 + T_{j,t}/q_{j,t}) &= \hat{c}_{h,t}^{-1/\psi} (q_{j,t} + T_{j,t}) \end{aligned} \quad (51)$$

Since front-loading consumption can relax the equity constraint across asset classes, the FOC for  $\hat{c}$  is now

$$\xi_{i,t}\hat{c}_{i,t}^{-1/\psi} + \xi_{i,t} \sum_j \frac{\gamma}{\psi} (\phi_{i,j,t} q_{j,t} \hat{k}_{i,j,t} \nu_{i,j,t})^2 \hat{c}_{i,t}^{-2/\psi-1} = 1 \quad (52)$$

Since households' FOC for consumption is unchanged, we get the MRS  $\Lambda_{i,t} = \xi_{i,t} \zeta_t$

$$\Lambda_{i,t} = \frac{\hat{c}_{h,t}^{-1/\psi}}{\hat{c}_{i,t}^{-1/\psi} + \sum_j \frac{\gamma}{\psi} (\phi_{i,j,t} \nu_{j,t} (g_{j,t}) \hat{k}_{i,j,t} \nu_{i,j,t})^2 \hat{c}_{i,t}^{-2/\psi-1}} \quad (53)$$

and the FOC for aggregate risk sharing yields

$$\sigma_{x,i,t} - \sigma_h = -\frac{1}{\gamma} \sigma_{\Lambda_{i,t}} \quad (54)$$

The logic is the same as in the baseline model; optimal contracts give more utility to an intermediary when the cost of his utility  $\Lambda_{i,t}$  is low.

It is still the case that every intermediary of each type gets the same policy function  $\hat{c}_f$ ,  $\hat{k}_{f,j}$  and  $\sigma_{x,f}$  for each  $f = 1 \dots F$ . We now have more endogenous state variables: for each intermediary type  $f = 1 \dots F$  we have  $X_{f,t} = \frac{\int_{\mathbb{I}_f} x_{i,t} di}{k_t}$ ; and for each asset class  $j = 1 \dots J$  we have  $\theta_{j,t} = \frac{k_{j,t}}{k_t}$ , where  $k_t = \sum_j k_{j,t}$  is the total capital stock:

$$\frac{dk_t}{k_t} = \underbrace{\sum_j g_{j,t} \theta_{j,t} dt}_{g_t} + \underbrace{\sum_j \sigma_{j,t} \theta_{j,t} dZ_t}_{\sigma_t}$$

Each intermediary type has aggregate wealth  $n_{f,t} = \xi_{f,t} X_{f,t} k_t$ , and the representative households' wealth is  $w_t = (\sum_j (q_{j,t} + T_{j,t}) \theta_{j,t} - \sum_f \xi_{f,t} X_{f,t}) k_t$ . Total output from each asset class is  $a_{j,t} k_{j,t} = \sum_f (a_{f,j,t} \hat{k}_{f,j,t} X_{f,t}) k_t$ . Market clearing conditions must be adjusted

$$\tilde{c}_{h,t} w_t + \sum_f \hat{c}_{f,t} X_{f,t} = \sum_j ((a_{j,t} - \nu_{j,t} (g_{j,t})) \theta_{j,t}) \quad (55)$$

$$\sum_f \hat{k}_{f,j,t} X_{f,t} = \theta_{j,t} \quad (56)$$

The law of motion of each  $X_f$  must be adjusted:

$$\mu_{X,f,t} = \frac{\rho}{1 - 1/\psi} - \frac{\hat{c}_{f,t}^{1-1/\psi}}{1 - 1/\psi} + \frac{\gamma}{2} \sigma_{x,f,t}^2 + \sum_j \frac{\gamma}{2} (\hat{c}_{f,t}^{-1/\psi} \phi_{f,j,t} \hat{k}_{f,j,t} \nu'_{j,t} (g_{j,t}) \nu_{f,j,t})^2 - g_t - \sigma_t \sigma_{x,f,t} + \sigma_t^2$$

$$\sigma_{X,f,t} = \sigma_{x,f,t} - \sigma_t$$



and the law of motion of each  $\theta_j$  is

$$d\theta_{j,t} = \theta_{j,t} (g_{j,t} - g_t + \sigma_t(\sigma_{j,t} - \sigma_t)) dt + \theta_{j,t} (\sigma_{j,t} - \sigma_t) dZ_t$$

The social planner has the same laws of motion. His value function takes the form  $\frac{(S(X,\theta,Y)k)^{1-\gamma}}{1-\gamma}$ . We must adjust his HJB equation, and also allow him to choose how to allocation assets to intermediaries:

$$\frac{\rho}{1-1/\psi} = \max_{g_j, \hat{c}_f, \hat{k}_{f,j}, \sigma_{x,f}} \frac{\left( \sum_j ((a_{j,t} - \iota_{j,t}(g_{j,t}))\theta_{j,t}) - \sum_f \hat{c}_f X_f \right)^{1-1/\psi}}{1-1/\psi} S^{1/\psi-1} \quad (57)$$

$$+ \mu_S + g - \frac{\gamma}{2} \sigma_S^2 - \frac{\gamma}{2} \sigma^2 + (1-\gamma)\sigma_S\sigma \quad (58)$$

where  $\mu_S$  and  $\sigma_S$  are obtained from Ito's lemma on  $S(X, \theta, Y)$ .

The FOC for  $\hat{c}_f$  and  $\sigma_{f,t}$  are the same as in the competitive equilibrium. We get equations (53) and (54), where  $\Lambda_{f,t} = -S'_{X_f}$ . The FOC for  $g_j$  is

$$\underbrace{\hat{c}_{h,t}^{-1/\psi} \iota_{j,t}(g_{j,t})(1 + \eta_{j,t})}_{\partial_{c_h}(Sk)} = S_t + \underbrace{\sum_f \Lambda_{f,t} X_{f,t} + \left( S'_{\theta_j} - \sum_m \theta_{m,t} S'_{\theta_m} \right)}_{\partial_{k_j}(Sk)} \quad (59)$$

$$\eta_{j,t} = \sum_f \frac{\Lambda_{f,t} X_{f,t}}{\hat{c}_h^{-1/\psi} \theta_{j,t}} \gamma (\hat{c}_{f,t}^{-1/\psi} \phi_{f,j,t} \hat{k}_{f,j,t} \nu'_{f,j,t}(g_{j,t}) \nu''_{j,t}(g_{j,t})) \quad (60)$$

Comparing this FOC with (51) we see that  $\eta_{j,t}$  captures the externality related to asset class  $j$ , analogous to the case with homogeneous capital and intermediaries. Here when the planner raises the marginal cost of capital, it affects idiosyncratic risk sharing for all intermediaries that hold that asset.

The FOC for  $\hat{k}_{f,j}$  is

$$\hat{c}_{h,t}^{-1/\psi} a_{f,j,t} - \Lambda_{f,t} \gamma (\hat{c}_{f,t}^{-1/\psi} \phi_{f,j,t} \nu'_{j,t}(g_{j,t}) \nu_{f,j,t})^2 \hat{k}_{f,j,t} = \lambda_{j,t}$$

where  $\lambda_{j,t}$  is the Lagrange multiplier on the constraint (56). Using  $\Lambda_{f,t} = \xi_{f,t} \zeta_t = \xi_{f,t} \hat{c}_{h,t}^{-1/\psi}$ , the definition of  $\tilde{\phi}_{f,j,t}$  and  $q_{j,t} = \iota_{j,t}(g_{j,t})$  in the competitive equilibrium, we get that all intermediaries who hold asset of class  $j$  must have the same

$$a_{i,j,t} - \gamma \frac{q_{j,t} k_{i,j,t}}{n_{i,t}} (\tilde{\phi}_{i,j,t} \nu_{i,j,t})^2 q_{j,t}$$

which is exactly what the competitive equilibrium does according to the pricing equation (50). So we see that  $\eta_{j,t}$  is still the only source of inefficiency in the economy. All other optimality conditions for the planner are satisfied.

### Proof of Proposition 3

The proof follows the same lines as the proof of Proposition 1. To establish that each intermediary's HJB holds, we now take derivatives on the planner's HJB equation with respect to each  $X_f$  (instead of a single  $X$  as before). Notice that  $S_t = S(\{X_f\}, \{\theta_j\}, Y)$ , so the law of motion of the  $\theta$ 's must be taken into account when computing  $\mu_S$  and  $\sigma_S$ . Also, now we don't have  $\hat{k} = X^{-1}$ . Instead,  $\hat{k}_{f,j}$  are controls for the planner, so the envelope theorem allows us to ignore it when taking derivatives with respect to  $X_f$ ; but  $X_f$  appears in the formula for  $a_{j,t}\theta_{j,t} = \sum_f \left( a_{f,j,t} \hat{k}_{f,j,t} X_{f,t} \right)$  and each of the (56) constraints (for each  $j$ ). Once this is taken into account, we obtain essentially the same formulas, extended to account for heterogenous asset classes and intermediaries.

To establish the validity of the sufficient statistic (43) for each asset class, we follow the proof of Proposition 2. but using expression (60):

$$\eta_{j,t} = \sum_f \frac{\Lambda_{f,t} X_{f,t}}{\hat{c}_{h,t}^{-1/\psi} \theta_{j,t}} \gamma(\hat{c}_{f,t}^{-1/\psi} \phi_{f,j,t} \hat{k}_{f,j,t} \nu_{f,j,t})^2 \iota''_{j,t}(g_{j,t})$$

Use  $\zeta_t = \hat{c}_{h,t}^{-1/\psi}$  and  $\Lambda_{f,t} = \xi_{f,t} \zeta_t$  to get

$$\begin{aligned} \eta_{j,t} &= \sum_f \frac{\xi_{f,t} X_{f,t}}{\theta_{j,t}} \gamma(\hat{c}_{f,t}^{-1/\psi} \phi_{f,j,t} \hat{k}_{f,j,t} \nu_{f,j,t})^2 \iota''_{j,t}(g_{j,t}) \\ \eta_{j,t} &= \sum_f \frac{X_{f,t} \hat{k}_{f,j,t}}{\xi_{f,t} \theta_{j,t}} \gamma(\xi_{f,t} \hat{c}_{f,t}^{-1/\psi} \phi_{f,j,t} \nu_{f,j,t})^2 \hat{k}_{f,j,t} \iota'_{j,t}(g_{j,t}) \frac{\iota''_{j,t}(g_{j,t})}{\iota'_{j,t}(g_{j,t})} \\ \eta_{j,t} &= \sum_f \frac{X_{f,t}}{\theta_{j,t}} \hat{k}_{f,j,t} \gamma(\xi_{f,t} \hat{c}_{f,t}^{-1/\psi} \phi_{f,j,t} \nu_{f,j,t})^2 \frac{\hat{k}_{f,j,t} \iota'_{j,t}(g_{j,t})}{\xi_{f,t}} \frac{\iota''_{j,t}(g_{j,t})}{\iota'_{j,t}(g_{j,t})} \end{aligned}$$

Now use  $\tilde{\phi}_{f,j,t} = \xi_{f,t} \hat{c}_{f,t}^{-1/\psi} \phi_{f,j,t}$ ,

$$\eta_{j,t} = \sum_f \frac{k_{f,j,t}}{k_{j,t}} \gamma(\tilde{\phi}_{f,j,t} \nu_{f,j,t})^2 \frac{q_{j,t} k_{f,j,t}}{n_{f,t}} \frac{\iota''_{j,t}(g_{j,t})}{\iota'_{j,t}(g_{j,t})}$$

Notice that for any  $f$  such that  $\hat{k}_{f,j,t} > 0$  we have  $\alpha_{f,j,t} = \gamma(\tilde{\phi}_{f,j,t} \nu_{f,j,t})^2 \frac{q_{j,t} k_{f,j,t}}{n_{f,t}}$ . Multiply and divide by  $q_{j,t} = \iota'_{j,t}(g_{j,t})$  to get:

$$\eta_{j,t} = \sum_f \frac{q_{j,t} k_{f,j,t}}{q_{j,t} k_{j,t}} \alpha_{f,j,t} \epsilon_{j,t} = \alpha_{j,t} \epsilon_{j,t}$$

where  $\alpha_{j,t} = \sum_f \frac{q_{j,t} k_{f,j,t}}{q_{j,t} k_{j,t}} \alpha_{f,j,t}$  is the value-weighted risk-adjusted expected excess return that intermediaries obtain on assets of class  $j$ .