

NBER WORKING PAPER SERIES

WHO SUFFERS DURING RECESSIONS?

Hilary W. Hoynes  
Douglas L. Miller  
Jessamyn Schaller

Working Paper 17951  
<http://www.nber.org/papers/w17951>

NATIONAL BUREAU OF ECONOMIC RESEARCH  
1050 Massachusetts Avenue  
Cambridge, MA 02138  
March 2012

We thank David Autor and Timothy Taylor for helpful editorial guidance. We also received valuable input from Marianne Bitler, Mary Daly, Nicole Fortin and Jean Roth. Doug Miller thanks the Center for Health and Wellbeing at Princeton University for support. The views expressed herein are those of the authors and do not necessarily reflect the views of the National Bureau of Economic Research.

NBER working papers are circulated for discussion and comment purposes. They have not been peer-reviewed or been subject to the review by the NBER Board of Directors that accompanies official NBER publications.

© 2012 by Hilary W. Hoynes, Douglas L. Miller, and Jessamyn Schaller. All rights reserved. Short sections of text, not to exceed two paragraphs, may be quoted without explicit permission provided that full credit, including © notice, is given to the source.

Who Suffers During Recessions?

Hilary W. Hoynes, Douglas L. Miller, and Jessamyn Schaller

NBER Working Paper No. 17951

March 2012

JEL No. J11,J21

**ABSTRACT**

In this paper we examine how business cycles affect labor market outcomes in the United States. We conduct a detailed analysis of how cycles affect outcomes differentially across persons of differing age, education, race, and gender, and we compare the cyclical sensitivity during the Great Recession to that in the early 1980s recession. We present raw tabulations and estimate a state panel data model that leverages variation across US states in the timing and severity of business cycles. We find that the impacts of the Great Recession are not uniform across demographic groups and have been felt most strongly for men, black and Hispanic workers, youth, and low education workers. These dramatic differences in the cyclical sensitivity across demographic groups are remarkably stable across three decades of time and throughout recessionary periods and expansionary periods. For the 2007 recession, these differences are largely explained by differences in exposure to cycles across industry-occupation employment.

Hilary W. Hoynes  
Department of Economics  
University of California, Davis  
One Shields Ave.  
Davis, CA 95616-8578  
and NBER  
hwhoynes@ucdavis.edu

Jessamyn Schaller  
University of California, Davis  
Department of Economics  
One Shields Avenue  
Davis, CA 95616-8578  
jschaller@ucdavis.edu

Douglas L. Miller  
University of California, Davis  
Department of Economics  
One Shields Avenue  
Davis, CA 95616-8578  
and NBER  
dlmiller@ucdavis.edu

The Great Recession generated large reductions in employment, earnings and income for workers and families in the United States. The seasonally adjusted unemployment rate increased from 5 percent in December 2007 to 9.5 percent in June 2009, the start and end of the recession according to the National Bureau of Economic Research (at <http://www.nber.org/cycles.html>). From 2007 to 2010, median real family income fell by 6 percent and the poverty rate increased to from 12.5 percent to 15.1 percent (DeNavas-Walt et al. 2011). The recovery since June 2009 has been slow relative to historical averages. In the more than two and a half years since the official start of the recovery, the unemployment rate has fallen by just over a percentage point - reaching 8.3 percent in February 2012. The effects of the Great Recession, however, are not experienced equally by all workers. National statistics can obscure dramatic differences in the severity of the cyclical impacts for different groups. For example, a recent analysis of labor market data shows that men experienced significantly larger job loss in the Great Recession compared to women while in the recovery, male employment is picking up more rapidly (Kochhar 2011).

We begin this paper with an overview of cyclical fluctuations in unemployment rates and employment from 1979 through 2011. Using national time series data, we compare the Great Recession to earlier recessions in terms of its severity, duration, and subsequent recovery. We then go on to use individual level data from January 1979 through December 2011 from the Current Population Survey Merged Outgoing Rotation Group (CPS-MORG) to measure and illustrate how unemployment and employment have changed in the Great Recession for persons of different ages, educational attainment, race, and gender. After establishing the basic descriptive findings, we estimate a state-panel data model to measure

the responsiveness of different groups to the state-month unemployment rate. The labor market outcomes we analyze are the groups' employment and unemployment.

Our findings are summarized as follows. First, the labor market decline in the Great Recession is both deeper and longer than the early 1980s recession. Second, the impacts of the Great Recession have been felt most strongly for men, black and Hispanic workers, youth, and low-education workers. Third, these dramatic differences in the cyclicalities across demographic groups are remarkably stable across three decades of time and across recessionary periods versus expansionary periods. Fourth, the differences across demographic groups during the 2007 recession to a large extent are explained by variation in the groups' exposure to cycles across industry-occupation.

Our study builds on a large existing literature in labor economics and macroeconomics on how business cycles affect outcomes for workers and families, including our own prior work (Bitler and Hoynes 2010; Hoynes 2000; Hoynes, Hines and Krueger 2001; Stevens et al. 2011). Our study makes several contributions to this existing literature. First, our primary focus is identifying differences in the cyclicalities across demographic groups. Second, we present the results of statistical tests for differences in the cyclicalities both across groups (for a given time period) and over time (for a given group). Third, by using data through the end of 2011 we highlight the results for the Great Recession, and compare them to the early 1980s recession. Finally, we compare the recovery periods following the two most severe recessions in our time frame: the recessions of the earlier 1980s and the 2007-09 recession.

Overview of Labor Market Fluctuations Since 1979

The U.S. economy from 1979 to 2011 has seen five recessions: six months from January 1980 to July 1980; 16 months from July 1981 to November 1982; eight months from July 1990 to March 1991; eight months from March 2001 to November 2001; and 19 months from December 2007 to June 2009. We follow a common practice of combining the back-to-back 1980 and 1981 recessions and the graphs therefore compare four cycles: 1980, 1990, 2001, and 2007. To put the labor market dimension of these recessions in context, consider Figures 1 and 2. Following the standard definitions, the percent unemployed is among those in the labor force, while the percent employed is among the entire population. We analyze both to capture different margins of behavior.

When discussing the monthly unemployment rate for this and all subsequent analyses in the paper we present seasonally adjusted measures, which remove the typical variation that takes place within calendar year. In Figure 1, we plot the percentage point increase in the unemployment rate for these four business cycles by the number of months since the official start of the recession. The paths of the unemployment rate after the 1991 and 2001 recessions were quite similar. After the 1980-1982 recessions, unemployment was slower to rise (which may be the result of combining two back-to-back recessions), but after about 48 months, the unemployment rate had dropped sharply. In contrast, the 2007 recession exhibits the steepest and largest increase in the unemployment rate among the four recessions. The unemployment rate rose from 5 percent in December 2007 to a high of 10.1 in October 2009. While the recession officially ended in July 2009, the unemployment rate has remained high, at 9.1 percent in August 2011. As of December 2011 (the last data point), unemployment rates are

slightly higher than at a similar point of the 1980 recession; however a comparison to the 1981 recession separately would show much higher unemployment for the current recession at this point in the recovery.

Figure 2 highlights the relatively weak recovery of 2010-2011 by looking at aggregate monthly employment (seasonally adjusted). This figure shows the percent change in employment compared with the employment level of the first month of each of the four recessions. The magnitude of the fall in the employment level is comparable in the 1980, 1991, and 2001 recessions; and employment falls much more severely in the 2007 recession. In the timing of the recovery of job growth, by 48 months since the beginning of the 2007 recession (where our data end), employment had returned to its pre-recession level in the three previous cycles. We are far from that in the Great Recession.

Many earlier studies have examined the effect of business cycles on labor market outcomes. Research on the Great Recession has confirmed that, across demographic groups, the decline in labor market outcomes since 2007 has been worse than any recession in the postwar period (Goodman and Mance, 2011). As in previous recessions, evidence suggests that the effects of the recent downturn have been born disproportionately by racial and ethnic minorities and by male, younger, and less-educated workers (Elsby et al. 2010; Farber 2011; Kochhar et al. 2011; Sierminska and Takhtamanova 2011; Verick 2009). However, by contrast with previous recoveries, employment growth patterns have favored men since the official end of the recession in June 2009 (Kochhar 2011). Since the recent recovery has been sluggish relative to previous recoveries, much attention has been paid to the possibility of increased structural unemployment due to job mismatch and the unprecedented extension of

unemployment insurance benefits to 99 weeks (as discussed in this symposium by Daly et al.; see also Howell and Azizoglu 2011; Reich 2010; Rothstein 2011).

In this paper, we investigate the differential impacts of these factors across demographic groups. The approach we take is most similar to that of Hines, Hoynes and Krueger (2001) who use annual data from the March Current Population Survey for 1976-1996 to examine the impact of cycles on employment, hours, earnings, and income. They adopt a state panel approach where the effects of the business cycle are identified by variation in the timing and severity of cycles across states. They explore differences across education groups (finding greater sensitivity for less educated) and test for a structural break in sensitivity in 1990 (finding none), as well as examining effects of business cycles on wage growth, health and work injuries, and government finances. As described below, we also use a state panel model in our analysis. We expand on their work by examining monthly data through December 2011, which enables a detailed analysis of the Great Recession and the start of the current recovery. Further, we examine differences across race, gender, age, and education groups and richly test for differences across groups and over time.

#### Raw Changes by Group and Comparisons across 1980 and 2007 Recessions

We begin with a snapshot of the labor market outcomes by demographic group in May 2007, on the eve of the Great Recession. Table 1 shows the employment, unemployment, hours and earnings of individuals by age, race, sex, and education. Employment, hours and earnings are higher for men, whites, prime age workers and those with higher education levels. The

opposite pattern is found for unemployment. These differences can be substantial. For example, less than half of individuals with no high school degree are working at the peak of the business cycle in 2007, compared to 86 percent of college graduates. Fifty-nine percent of black women are working, compared to 71 percent of white women.

For this comparison, and for much of what follows, we utilize individual-level data from the Current Population Survey (CPS) Merged Outgoing Rotation Group (MORG) covering the period from January 1979 to December 2011.<sup>1</sup> The CPS is a representative monthly household survey conducted by the U.S. Bureau of Labor Statistics that collects information on unemployment, labor force participation, and demographic characteristics of the population. The MORG is a subset of the full CPS sample, with detailed information for 25,000 or more individuals per month, including their employment status, weekly work hours and usual weekly earnings, as well as the age, education, race, ethnicity, and gender of each recipient. We collapse the MORG into cells based on state, year-month, and demographic group. Our demographic groups are defined by single year of age, gender, race/ethnicity (white, black, Hispanic, other)<sup>2</sup> and education (less than high school, high school, some college, college

---

<sup>1</sup> We obtain the CPS-MORG extracts from the National Bureau of Economic Research: <http://www.nber.org/morg/annual/>. Our sample includes individuals aged 16 to 60. We drop those over age 60 to abstract from retirement decisions; we also drop the small number of observations missing ethnicity, which are all pre-2002.

<sup>2</sup> White, black and other races are all non-Hispanic. Because of small population shares, we do not present results for the “other” race group. For the remainder of the paper we will refer to these as “race” groups even though they are more accurately race/ethnicity groups. By “single year of age” we mean, for example, that 18 year olds are a separate group from 19 year olds.



graduate or more).<sup>3</sup> For each cell, we calculate the percent employed and the percent unemployed using the CPS-provided weights.

Next we turn to exploring the “raw” changes in labor market outcomes for these groups during the 2007 recession and comparing them to the changes in the recessionary episodes of the early 1980s. Here, we define the recessions by identifying the low and high points of the seasonally adjusted national unemployment rate; the subsequent high to low points of the unemployment rate identifies the recovery. Our qualitative conclusions are unchanged if we use the National Bureau of Economic Research dating. However, for present purposes we prefer using the unemployment rates to date the cycles because the NBER dating depends in substantial part on GDP growth and labor market measures tend to lag changes in GDP. Thus for 2007, we have the recession of May 2007 to October 2009 and the recovery of October 2009 to December 2011 (the last month in our data). For the 1980 cycle, we have the recession of May 1979 to November 1982 and the recovery of November 1982 to January 1985 (we use 27 months of recovery to match the data availability for the current recovery).

In the first two columns of Table 2, we show peak-to-trough changes in the unemployment rate for the race/sex, age and education subgroups over the 1980 and 2007 recessions. To construct this table (and all subsequent calculations using the Current Population Survey) we first compute monthly unemployment rates for each demographic group from the Current Population Survey Merged Outgoing Rotation Group data. We then carry out a seasonal adjustment to this data, regressing each time series on a set of month dummies (with

---

<sup>3</sup> Beginning in January 1992, the Bureau of Labor Statistics and the Census Bureau changed the focus of the Current Population Survey educational-attainment question from years of attainment to degree-receipt. We follow the matching procedure outlined in Jaeger (1997) to create categories that are comparable over time. However, the redesign of the education question creates a discontinuity in the categorization of educational attainment for which we cannot fully correct.

December omitted), and using the constant and residuals from this regression to create the adjusted series. Bold typeface in the table indicates groups for which the difference between peak-to-trough changes in labor market outcomes in the two recessions is statistically significant at the 5% level.

In the 2007 recession, the demographic groups who have high baseline unemployment rates (Table 1) also had the greatest increase in unemployment (Table 2) over the recession. Men had larger increases than women; blacks and Hispanics had larger increases than whites; youth had larger increases than the middle aged; and low education groups were also hit the hardest.

Comparing the 2007-2009 recession to the 1980s recession, several patterns emerge. First, for most groups, the increase in unemployment is greater in the more recent recession (although only statistically significantly different for high school graduates and college graduates). The largest increases (relative to the 1980s recession) are for Hispanic women and those with a high school degree. The exceptions include black men, Hispanic men, and those with less than a high school degree, all groups that experienced a smaller increase in unemployment rates compared to the 1980s recession. However, over time the educational distribution has shifted toward the higher educational categories— so although all but the least-educated did worse, on average people have moved into the better-faring groups.

The final two columns of Table 2 show results focusing on changes (in percentage point terms) in the employment rate. The patterns across groups are fairly similar to those of the unemployment rate: men, black and young workers, and low education groups all experienced greater reductions in employment in the current recession. However, comparing the two

recessions presents a noticeably different pattern than the one for the unemployment rate. For all groups except Hispanic men, the employment rate fell more during the recent recession than during 1980s (and statistically significantly so for whites, those ages 25-44, high school graduates and those with some college). One possible reason for this difference is that the 1980s recession occurred while women's labor force participation rates were undergoing a secular increase; that increase leveled out (and even slightly reversed) at the start of the twenty-first century (as discussed in this journal by Juhn and Potter 2006). For example, white women experienced *increases* in employment rates during the 1980s recession, but decreases during the current recession. The 1980s increases were likely driven by the secular increase in women's labor force participation rates, thus masking any business cycle sensitivity.

#### A Regression Approach for Potentially Confounding Factors

The crude changes over time across recessions are informative about the cross-group and cross-recession patterns, but they are also limited. Cross-group comparisons may be confounded by changes in other determinants of labor market success. For example, if the composition of low education groups is shifting over time to racial, ethnic, or age groups that fare worse in the labor market, then the measured change over time for low education groups will be confounded with those changes. If there are non-recession based changes in labor market patterns over time—like the increase in women's labor market participation—then these will also be wrapped up in the measured changes. To address these issues, we turn to a regression-adjusted measure of sensitivity to business cycles. We seek to use differences in the

timing and intensity of state-level movement in unemployment rates to estimate how different demographic groups are affected by business cycle swings.

Again, we use the Current Population Survey (CPS) Merged Outgoing Rotation Group (MORG) data from January 1979 to December 2011. As noted already, we collapse the MORG into cells based on state, year-month, and the demographic groups (race/sex x age x education) described earlier. Also, we supplement this data with national and state unemployment statistics compiled from the Current Population Survey by the Bureau of Labor Statistics (2011a, 2011b).

As a starting point, we estimate a regression in which the dependent variable  $y$  is the unemployment rate for a particular group, defined by the demographic cell  $g$  for that group, (race/sex x age x education), state  $s$ , and time (year-month)  $t$ . Our regression equation takes the form:

$$(1) \quad y_{gst} = \beta_{major-group} UN_{st} + RaceSex_g + Age_g + Educ_g + \alpha_s + \delta_t + year_t \gamma_s + \varepsilon_{gst}$$

We estimate this equation for each *major* [demographic] *group*, such as black men, white women, those without a high school degree, those with a college degree or more, those 18 years of age, 19 years of age, and so on. On the right-hand side of each equation,  $UN_{st}$  is the state unemployment rate in month-year  $t$ ,  $RaceSex_g$ ,  $Age_g$ , and  $Educ_g$  are group-specific intercepts, and we include state ( $\alpha_s$ ) and year-month ( $\delta_t$ ) fixed effects and state-specific time trends ( $\gamma_s$ ). The coefficient of interest is  $\beta_{major-group}$ , which gives the sensitivity of the group (e.g. white men) to the to the state unemployment rate<sup>4</sup>. We use the Current Population

---

<sup>4</sup> We estimate this model separately by major demographic group, with the unit of observation being subgroup by state by year-month cells. For example, when we estimate the model for white men, there are 180 observations

Survey population weights for each cell, and we conduct statistical inference clustering on U.S. states.<sup>5</sup>

This regression analysis embodies several changes to our analysis, compared to the raw differences presented in the previous section. First, it changes the source of variation used to estimate the sensitivity to the business cycle. The raw changes in the previous section were driven by national changes over time; specifically, comparing labor market outcomes by group between the peak and trough of a recession. Instead, here our coefficients are based on panel fixed effect estimates. We include state fixed effects, which remove variation that is purely driven by cross-state difference. We also include time fixed effects, which remove variation common to a point in time and control for flexible national time trends. Doing so protects our estimates from being driven by secular changes in demographic patterns such as changes in women’s attachment to the labor market. After controlling for the fixed effects, we are left with variation that is driven by how the timing and severity of the business cycle affects states differently. When a state enters a recession (or recovery) earlier than the national average, or when a state’s change in overall unemployment is greater than the national average, that variation is used to identify the coefficients in our regression.

Another feature of the regression analysis, compared to the raw changes above, is that we can control for demographic characteristics, thereby statistically adjusting for any

---

(45 age categories by 4 education categories) for each state-year-month. In this example, the RaceSex<sub>g</sub> dummies are dropped from the regression; the Age<sub>g</sub> and Educ<sub>g</sub> dummies control for compositional shifts within white men.<sup>5</sup> Our approach is similar in spirit to equation 7 and Table 2 in (Blanchard et. al., 1992), who examine US states’ responsiveness to the overall US business cycle. We differ from their approach in that we use state-year-demographic group variation, and we examine responsiveness by specific demographic groups to overall state-year variation. By regressing state-specific labor market outcomes on the overall unemployment rate, Blanchard et. al. note, “Here, obviously, the proper weighted average of coefficients [across states] is equal to one; of interest is the distribution of [group-specific coefficients] across [groups].” Here, we too are interested in the descriptive findings for the differences in effects of cycles across demographic groups.

differences in the composition of groups. For example, the group of workers with less than a high school degree is becoming more Hispanic over time. The raw differences for education groups, shown above, may in part reflect such changes in composition. A final important difference between the two approaches is that the regression results are not only estimated over the recession periods, but instead are estimated using data from both contractions and expansions.

To begin, we estimate this regression separately for each of our major demographic groups. For example, we estimate it for all 16 year olds, and preserve the coefficient  $\beta_{16}$  (for this regression the age dummies are excluded from the estimation). We then estimate the regression for 17 year-olds, and so on. After estimating for each age, we re-estimate the equation separately for each of our six main race/sex groups, and for our four education categories. The results are presented in Figures 3 and 4.

Figure 3 shows the results of the series of regression estimates for each single year of age. Each point on the graph represents estimates from a separate regression: the x-axis gives the person's age and on the y-axis we plot the estimated coefficient and the 95 percent confidence interval. For example, the first point on the graph is interpreted as "when a state year experiences a percentage point higher unemployment rate, 16 year-olds in that state experience a 2.8 percentage point higher unemployment rate." Figure 3 shows that the labor market cycle hits especially hard for youth, with responsiveness for 16-19 year olds more than twice that of those in their mid-20s. The coefficients continue to decline, at a more modest rate, until ages in the mid-50s.

In Figure 4 we present results from stratifying on race-sex demographic groups and on education. The results here suggest that the unemployment rate of men is more responsive to business cycle movements than the unemployment rate for women; that the response for blacks is greater than for Hispanics, for whom in turn the labor market response is higher than for whites; and that low-education groups are more responsive than high-education groups. The differences are large: an increase of one percentage point in the state unemployment rate leads to almost a two percentage point increase in unemployment for workers with less than a high school degree compared to less than a half a percentage point increase for those with a college degree. The unemployment rate of black men has almost double the responsiveness to the business cycle of white men's unemployment rate, and the unemployment rate of black women almost triples the responsiveness of that of white women.

These results are qualitatively similar to the raw changes presented earlier. This correspondence is remarkable, for three reasons. First, the two models are estimated using fundamentally different sources of variation: that is, state versus national cycles. Second, the model controls for time trends for each subgroup. Third, the regression model is estimated over the full 1979-2011 time period, rather than just during the 2007 or 1980s recessions.

We then carry out a parallel regression exercise, but this time using the employment rate, rather than the unemployment rate, as our left-hand-side dependent variable. In Figure 5 we consider the sensitivities of the age-specific employment rate to the overall state-month unemployment rate. The interpretation of the coefficients is similar to that discussed above; for example, a one percentage point increase in the state unemployment rate leads to a 1.7 percentage point reduction in the employment rate for 16 year olds. The patterns here are

similar to Figure 3: the youngest are the most responsive, and by-age cyclical declines with age.

Figure 6 shows estimates of the impact of the overall state-month unemployment rate on the employment rate by race-sex and education groups. The patterns for the race/sex groups are somewhat different for employment compared to the unemployment rate in Figure 4. It is still the case that white individuals are less responsive than their black counterparts, women are less responsive than are men, and higher education groups less responsive than lower education groups. (In reading the graph, note that as one moves up the y-axis the sensitivity gets closer to 0 and is therefore less sensitive). However, in contrast to Figure 4, here the gender differences in responsiveness are much greater. The gender differences are large enough to dominate the race differences, so that the three least responsive groups (among the 6 race/sex groups) are the women. For this measure Hispanic women are the least responsive of all the demographic groups. It can be shown that the cyclical responsiveness of the employment rate, the unemployment rate, and the labor force participation rate are related through an adding-up identity. The larger gender differences for cyclical responsiveness of the employment rate is consistent with women being more likely to act as added workers (labor force increasing in recessions) and men being more likely to act as discouraged workers (labor force decreasing in recessions). Hispanic women, with their high rates of marriage (compared to the other groups) may be most likely to behave as added workers; hence the very large widening for Hispanics.

One potential limitation of our specification is that the time dummies throw away a large portion of the national macro cycle. We have re-estimated equation (1) without the year-



month dummies, and present results from this in figures in an on-line appendix available with this paper at <http://e-jep.org>. The results are very similar to those in Figures 3-6. The exception to this is that women's employment appears to be more responsive when the year-month dummies are omitted. This is exactly the demographic group and the outcome variable that reflects the concerns discussed above about bias due to long-run demographic trends. As such we present the models with year-month dummies in this paper.

Taken as a whole, these regression results largely reinforce the simple over-time patterns: men, nonwhites, youth, and those with lower education levels are the most responsive to cycles. Given the important differences in these two methodological approaches discussed above, we are impressed by the similarity of the findings. We interpret this as evidence of the robustness of the patterns that we document.

#### Did Cyclical Responses Differ in the Great Recession?

We can use a variation of our regression model to explore whether the Great Recession is different from earlier business cycle patterns. In particular, as above in our analysis of raw changes, we compare the Great Recession to the early-1980s recession. In so doing, we focus on two additional questions. First, for each demographic group, is the pattern of business cycle responsiveness in the Great Recession similar to what it was in the back-to-back recessionary episodes of the early 1980s? Second, how do the responses to the recoveries compare across the demographic groups?

To ask these questions, we again implement a regression model. We start with equation (1) but instead of estimating one equation for each major demographic group, we pool groups continuing to identify different demographic responses across major demographic group ( $\beta_{major-group} UR_{st}$ ). In this pooled model we also allow for each major demographic groups' responsiveness to vary depending on the time period. Specifically, we expand  $\beta_{major-group} UR_{st}$  and include the unemployment rate impacts for three periods (the 1980s cycle, the 2007 cycle, and the middle period). For each major demographic group, we then test for equality of coefficients across the two recessions, and equality of coefficients across the two recoveries (testing whether  $\beta_{major-group}^{1980} = \beta_{major-group}^{2007}$ ).

To implement this regression, the periods are from May 1979 to November 1982 for the recessionary period of the early 1980s and from May 2007 to October 2009 for the 2007 recession, based on the minimum to maximum of the national (seasonally adjusted) unemployment rate. We pool all race/sex demographic groups—that is, we looked separately at the 14 categories of white men and women, black men and women, Hispanic men and women, four age groups (16-19, 20-24, 25-44, and 45-60), and four education groups (less than high school, high school grad only, some college, and college graduate).<sup>6</sup> The detailed findings of these regressions, along with some additional statistical tests, are presented in an on-line appendix available with this paper at <http://e-jep.org>. Here, we summarize the main qualitative conclusions.

---

<sup>6</sup> This pooled regression is more restrictive than the stratified regressions behind Figures 3-6, because it imposes identical time dummies and state fixed effects for all demographic groups. In order to preserve the flexibility of the pooled regressions, we include as control variables group-specific quadratic time trends and group-specific state fixed effects. These controls allow us to recover similar coefficients to the stratified models.

First comparing the responsiveness of unemployment rates for different demographic subgroups in the recession of the 1980s and the Great Recession, the across-group patterns are similar to those of the stratified regression (Figures 3 and 4). The responsiveness of the unemployment rates of men, Hispanics, youth and those with lower education levels are higher in both recessions, while the unemployment rates of women, prime-aged workers, and higher education groups are less responsive. For each of the race/sex groups, the cyclical responsiveness is very similar across recession periods, and we cannot reject the hypothesis of equality across the 1980 and 2007 recessions for any of these groups.<sup>7</sup> We do find that the Great Recession has statistically significantly larger impacts for older workers, and for each education category. The magnitude of the change is small, however: for example, the coefficient for those aged 45-60 increases from 0.70 in the 1980s recession to 0.85 in the 2007 recession. Our main punch line is thus reinforced: the Great Recession is deeper than previous recessions, but otherwise is affecting groups more or less similarly.

The story is somewhat different when we consider the responsiveness of the unemployment rate for different demographic groups in the recoveries following the 1980s and the 2007-2009 recessions. The cyclical responsiveness for the race/sex groups is significantly lower for the Great Recession, suggesting a weaker responsiveness to the recovery. For example, for black women the coefficient is 1.58 in the 1980s recovery and 1.34 in the 2007 recovery. For the age

---

<sup>7</sup> In an alternative specification in which we pooled together all men as a group, we did find that the cyclical responsiveness in the Great Recession for men is statistically significantly higher than in the 1980s recession, although the magnitude of the over-time differences is fairly small.

and education comparisons, the patterns for the 1980s recovery and the current recovery are relatively comparable.<sup>8</sup>

### What Explains the Differences Across Demographic Groups?

One likely explanation for these persistent differences in the impacts of cycles across demographic groups derives from the variation in cyclicality across industries. Construction and manufacturing are more cyclical industries while services and government are less cyclical. Furthermore, many of the demographic groups that exhibit larger cyclical variation (men, those with lower education levels, minorities) are more likely to be employed in the industries with greater exposure to cycles. As an illustration of the importance of industry in the context of demographic comparisons, Figure 7 presents a scatterplot of the percent decline in industry employment between the peak and trough of the current recession (for 52 industry groups). We show the difference in the severity of the labor market shock on the y-axis and on the x-axis is the share male in the industry (measured at the peak). We have added a bivariate regression line for guidance.<sup>9</sup> As the figure shows, the higher the share male in the industry, the larger the employment decline in the current recession. This appears to be an industry effect (as opposed

---

<sup>8</sup> Given that we are regressing group specific unemployment rates on the state aggregate unemployment rate, one might expect that the average across demographic subgroups (appropriately weighted by population shares) should average to 1. This is not necessarily the case because our group outcome measures come from our MORG sample where we limit the sample to those 16-60. The cycle measure, the state unemployment rate, is the aggregate unemployment rate published by BLS (Bureau of Labor Statistics 2011).

<sup>9</sup> The percent change in employment is calculated between May 2007 and October 2009 and we collapse the data to industry using the “2-digit” NAICS industry codes. The regression line is calculated using a weighted regression, with industry employment at the peak as the weights. There are a total of 52 industries and while we include all observations to calculate the regression line, in the figure we drop the few observations outside the -50%, +50% range on the y-axis to improve the scaling.

to a “male” effect), because the employment pattern persists if we decompose the employment loss into the loss for women and the loss for men.

To explore this further, we create a “predicted” peak-to-trough change in the employment rate (May 2007 to October 2009) for each demographic group. Specifically, we follow Bartik (1991) and create predicted changes in the employment level for each demographic group by multiplying the group’s share of total employment in 10 industry-by-3 occupation cells at the peak (May 2007) by the U.S.-wide peak-to-trough change in total industry-occupation employment and summing across industry-occupations. The difference between the actual and predicted changes can be interpreted as the demographic group-specific component of employment loss that operates above (or below) the direct effect of being in cyclical industry-occupations.<sup>10</sup>

We present the results in Table 3, where we present the predicted change in the employment rate (column 2), the actual change in the employment rate (column 3), and the employment rate at the peak (column 1, repeated from Table 1).

The results in Table 3 show that the difference in the cyclicalities between men and women is explained almost completely by the gender differences in the industry-occupation of employment. The male employment rate is predicted to decrease by 7.4 percentage points slightly larger than the observed decline of 7.1 percentage points. The female employment rate is predicted to drop by 3.0 percentage points just below the observed 3.4 percentage point

---

<sup>10</sup>Using detailed industry codes in the CPS-MORG, we group observations into 10 major industries: (1) Agriculture, Forestry and Fishing (2) Mining (3) Construction (4) Manufacturing (5) Transportation Warehousing, and Utilities (6) Wholesale Trade (7) Retail Trade (8) Finance, Insurance, Real Estate and Information (9) Services and (10) Public Administration. Within each industry, observations are grouped into three occupational categories: managerial, clerical/services, and blue collar. We create regression-based seasonally adjusted data series for each group-industry-occupation prior to performing this analysis.

decline. Interestingly, the Great Recession has larger impacts than predicted for blacks, young workers, and more educated workers. On the other hand, whites, older workers, and less educated workers experienced smaller declines than predicted. For example, older workers (45-60) experienced a 3.3 percentage point reduction in their employment rate, two percentage points lower than their predicted decline. College educated workers experienced a 4.6 percentage point decline in their employment rate compared to the predicted decline of 3.2 percentage points. The largest discrepancies between predicted and actual change are for youth, especially for teens. For this group, their industry/occupation mix predicts a loss of 1.6 percentage points of employment; the actual loss was 7.3 points. We speculate that this may reflect the dynamics of hiring and separations during the recession. Workers with job tenure were able to lower their rate of quits, but those starting without jobs (such as youth) may have been hit hardest by the large drop in hiring rates (Davis et al 2012).

## Conclusion

The labor market decline during Great Recession and its aftermath has been both deeper and longer than the early 1980s recession—indeed, the longest and deepest since the Great Depression. The labor market effects of the Great Recession have not been not uniform across demographic groups. Men, blacks, Hispanics, youth, and those with lower education levels experience more employment declines and unemployment increases compared to women, whites, prime aged workers, and those with high education levels. However, these dramatic differences in the cyclicity across demographic groups have been remarkably stable

since at least the late 1970s and across recessionary periods versus expansionary periods. These gradients persist despite the dramatic changes in the labor market over the past 30 years, including the increase in labor force attachment for women, Hispanic immigration, the decline of manufacturing, and so on.

The general tone of these findings might be surprising given much emphasis in the press on the “man-cession”—that is, the greater effect that the Great Recession has had on men (see, for example “As Layoffs Surge, Women May Pass Men in Job Force”, *New York Times*, Feb. 6, 2009, “Jobs Market: Men, Hit Hardest in Recession, are Getting Work Faster Than Women”, *Washington Post*, July 6, 2011). Our analysis shows that men, across recessions and recoveries, experience more cyclical labor market outcomes. This is largely the result of their higher propensity to be employed in highly cyclical industries such as construction and manufacturing. On the other hand, women are more likely to be employed in less cyclical industries such as services and public administration. More generally, much of the difference in the effect of cycles across groups during the 2007 recession is explained by being at greater exposure to the fluctuations due to the industries and occupations that they are employed in.

Although overall the 2007-2009 recession appears similar to the 1980s recession, it did have somewhat greater responsiveness for women’s employment, and for the youngest and oldest workers. Further, we do find evidence of a “he-recovery;” and the extent to which the current recovery is being experienced more by men than women (compared to the 1980s recovery) is largely due to a drop in women’s cyclical employment during the current recovery.

Despite these various distinctions, the overarching picture is one of stability in the demographic patterns of response to the business cycle over time. Who loses in the Great

Recession? The same groups who lost in the recessions of the 1980s, and who experience weaker labor market outcomes even in the good times. Viewed through the lens of these demographic patterns across labor markets, the Great Recession is different from business cycles over the three decades earlier in size and length, but not in type.



## Acknowledgements

We thank David Autor and Timothy Taylor for helpful editorial guidance. We also received valuable input from Marianne Bitler, Mary Daly, Nicole Fortin and Jean Roth. Doug Miller thanks the Center for Health and Wellbeing at Princeton University for support.

## References

- Acs, Gregory and Douglas Wissoker. 1991. "The Impact of Local Labor Markets on the Employment Patterns of Young Inner-City Males." Mimeo, Urban Institute.
- Autor, David H., Lawrence F. Katz, and Melissa S. Kearney. 2008. "Trends in U.S. Wage Inequality: Revising the Revisionists." *The Review of Economics and Statistics*, 90(2): 300-323.
- Bartik, Timothy J. 1991. "Who Benefits from State and Local Economic Development Policies?" W.E. Upjohn Institute for Employment Research. Kalamazoo Michigan.
- Bartik, Timothy J. 1993a. "The Effects of Local Labor Markets on Individual Labor Market Outcomes for Different Demographic Groups and the Poor." W.E. Upjohn Institute Working Paper 93-23.
- Bartik, Timothy J. 1993b. "Economic Development and Black Economic Success." Upjohn Institute Technical Report No. 93-001.
- Bartik, Timothy J. 1994 "The Effects of Metropolitan Job Growth on the Size Distribution of Family Income." *Journal of Regional Science*, 34(4):483-501.
- Bartik, Timothy J. 1996. "The Distributional Effects of Local Labor Demand and Industrial Mix: Estimates Using Individual Panel Data." *Journal of Urban Economics*, 40(2):150-178.
- Biddle, Jeff, and Daniel S. Hamermesh. 2011 "Cycles of Wage Discrimination." NBER working paper No. 17326.
- Bils, Mark. 1985. "Real Wages over the Business Cycle: Evidence from Panel Data." *Journal of Political Economy*, 93(4): 666-689.
- Bitler, Marianne and Hilary Hoynes. 2010. "The State of the Safety Net in the Post-Welfare Reform Era." *Brookings Papers on Economic Activity*, Fall 2010, pp. 71-127.
- Blanchard, Olivier J. and Lawrence F. Katz. 1992. "Regional Evolutions." *Brookings Papers on Economic Activity*, 1:1992.
- Blank, Rebecca. 1989. "Disaggregating the Effect of the Business Cycle on the Distribution of Income." *Economica*, 56:141-163.
- Blank, Rebecca. 1990 "Why are Wages Cyclical in the 1970s?" *Journal of Labor Economics*, 8(1):16-47.

Blank, Rebecca. 1993. "Why Were Poverty Rates So High in the 1980s?" In *Poverty and Prosperity in the Late Twentieth Century*, eds. Dimitri Papadimitriou and Edward Wolff. New York: St. Martin's Press.

Blank, Rebecca and Alan Blinder. 1986. "Macroeconomics, Income Distribution, and Poverty." In *Fighting Poverty: What Works and What Doesn't*, ed. Sheldon Danziger and Daniel Weinberg. Cambridge, MA: Harvard University Press.

Blank, Rebecca and David Card. 1993. "Poverty, Income Distribution and Growth: Are They Still Related?" *Brookings Papers on Economic Activity*, 2:1993.

Bound, John and Richard Freeman. 1992. "What Went Wrong? The Erosion of Relative Earnings and Employment Among Young Black men in the 1980s" *The Quarterly Journal of Economics*, 107:201-232.

Bound, John and Harry Holzer. 1993. "Industrial Shifts, Skill Levels, and the Labor Market for White and Black Males". *The Review of Economics and Statistics*, 75(3): 387-396.

Bound, John and Harry Holzer. 1995. "Structural Changes, Employment Outcomes, and Population Adjustments Among Whites and Blacks: 1980-1990." *Institute for Research on Poverty Discussion Paper #1057-95*.

Bureau of Economic Analysis. 2011. *Personal Consumption Expenditures: Chain Type Price Index*. Obtained from the Federal Reserve Economic Data (FRED) on 9/9/11.  
<http://research.stlouisfed.org/fred2/series/PCECTPI>

Bureau of Labor Statistics. 2011. *Local Area Unemployment Statistics from the Current Population Survey*. <http://www.bls.gov/lau/>, accessed 8/15/11.

Bureau of Labor Statistics. 2012a. *Labor Force Statistics from the Current Population Survey*. <http://www.bls.gov/cps/>, accessed 2/20/12.

Bureau of Labor Statistics. 2012b. *Current Employment Statistics - CES (National)*. <http://www.bls.gov/ces/>, accessed 2/20/12.

Cain, Glen and Ross Finnie. 1990. "The Black-White Difference in Youth Employment: Evidence from Demand Side Factors." *Journal of Labor Economics*, 8:S364-95.

Cutler, David M. and Lawrence F. Katz. 1991. "Macroeconomic Performance and the Disadvantaged." *Brookings Papers on Economic Activity*, 1:1991, 1-74.

Daly, Mary, Bart Hobijn, and Rob Valletta. 2011. "The Recent Evolution of the Natural Rate of Unemployment." *Journal of Economic Perspectives*, forthcoming.

Davis S.J., R. Jason Faberman, and John Haltiwanger, 2012. "Labor Market flows in the cross section and over time." *Journal of Monetary Economics* 59, 1–18.

Deaton, Angus. 2011. "The financial crisis and the well-being of Americans," The Hicks Lecture, Oxford, May 16th, 2011.

DeNavas-Walt, Carmen, Bernadette D. Proctor, and Jessica C. Smith. 2011. Current Population Reports, P60-239, Income, Poverty, and Health Insurance Coverage in the United States: 2010, U.S. Census Bureau, U.S. Government Printing Office, Washington, DC.

Elsby, Michael, Bart Hobijn, and Aysegul Sahin. 2010. "The Labor Market in the Great Recession." *Brookings Papers on Economic Activity*, 2:2010, 1-48.

Farber, Henry. 2011. "Job Loss in the Great Recession: Historical Perspective from the Displaced Workers Survey, 1984-2010." NBER Working Paper No. 17040.

Freeman, Richard. 1982. "Economic Determinants of Geographic and Individual Variation in the Labor Market Position of Young Persons." In *The Youth Labor Market Problem: Its Nature, Causes, and Consequences*, ed. R Freeman and D. Wise. Chicago: University of Chicago Press.

Freeman, Richard. 1991a. "Labour Market Tightness and the Mismatch Between Demand and Supply of Less-Educated Young Men in the United States in the 1980s." In *Mismatch and Labour Mobility*, ed. P. Schioppa. Cambridge: Cambridge University Press.

Freeman, Richard. 1991b. "Employment and Earnings of Disadvantaged Young Men in a Labor Shortage Economy." In *The Urban Underclass*, ed. C. Jencks and Peterson. Washington DC: Brookings Institution Press.

Freeman, Richard. 2001. "The Rising Tide Lifts...?" NBER Working Paper 8155.

Freeman, Richard and William Rodgers III. 2000. "Area Economic Conditions and the Labor Market Outcomes of Young Men in the 1990s Expansion", in Robert Cherry and William Rodgers III, eds., *Prosperity for All*, New York: Russell Sage Foundation, pp. 50-87.

Goodman, Christopher J. and Steven M. Mance. 2011. "Employment loss and the 2007-09 recession: an overview." *Monthly Labor Review*. 134 (4): 3-12.

Hines, James, Hilary Hoynes and Alan Krueger. 2001. "Another Look at Whether a Rising Tide Lifts all Boats." In *The Roaring Nineties: Can Full Employment Be Sustained*, Alan Krueger and Robert Solow, editors. Russell Sage Foundation: New York.

Holzer, Harry J. 1991. "Employment, Unemployment, and Demand Shifts in Local Labor Markets." *The Review of Economics and Statistics*, 73(1): 25-32.

Howell, David R. and Bert M. Azizoglu. 2011. "Unemployment Benefits and Work Incentives: The U.S. Labor Market in the Great Recession." Political Economy Research Institute, Working Paper No. 257.

Hoynes, Hilary W. 2000. "The Employment and Earnings of Less Skilled Workers Over the Business Cycle", in *Finding Jobs: Work and Welfare Reform*, edited by Rebecca Blank and David Card. Russell Sage Foundation: New York, pp. 23-71.

Irwin, Neil and Brady Dennis. 2011. "Jobs Market: Men, Hit Hardest in Recession, are Getting Work Faster Than Women." *The Washington Post*. July 6, 2011.

Juhn, Chinhui and Simon Potter. 2006. "Changes in Labor Force Participation in the United States." *Journal of Economic Perspectives*, 20 (3): 27-46.

Keane, Michael, Robert Moffitt and David Runkle. 1988. "Real Wages over the Business cycles: Estimating the Impact of Heterogeneity with Micro Data." *Journal of Political Economy* 96:1232-1266.

Kochhar, Rakesh. 2011. "In Two Years of Economic Recovery, Women Lost Jobs, Men Found Them," *Pew Social & Demographic Trends*, Washington, D.C.

Kochhar, Rakesh, Richard Fry, and Paul Taylor. 2011. "Wealth Gaps Rise to Record Highs Between Whites, Blacks, and Hispanics." *Pew Social & Demographic Trends*, Washington, D.C.

National Bureau of Economic Research (2011). "U.S. Business Cycle Expansions and Contractions." <http://www.nber.org/cycles.html>, accessed 9/1/2011.

Rampell, Catherine. 2009. "As Layoffs Surge, Women May Pass Men in Job Force." *The New York Times*, February 6, 2009.

Reich, Michael. 2010. "High Unemployment after the Great Recession: Why? What Can We Do?" *Center on Wage and Employment Dynamics Policy Brief*.

Rothstein, Jesse. 2011. "Unemployment and Job Search in the Great Recession," NBER Working Paper No. 17534.

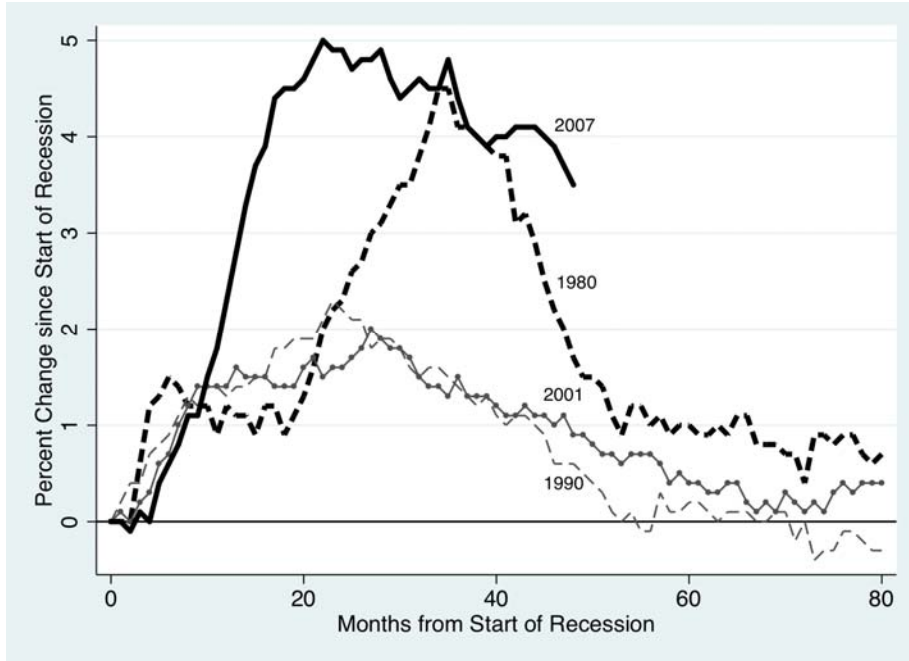
Sierminska, Eva, and Yelena Takhtamanova. 2011. "Job Flows, Demographics, and the Great Recession," in: *Who Loses in the Downturn? Economic Crisis, Employment, and Income Distribution*, Immervoll, Peichl, Tatsiramos and Polachek, Eds. *Research in Labor Economics*, Vol. 32: 115-154.

Solon, Gary, Robert Barsky, and Jonathan Parker. 1994. "Measuring the Cyclicity of Real Wages: How Important Is Composition Bias?" *Quarterly Journal of Economics* 109(1): 1-26.

Stevens, Ann Huff, Douglas L. Miller, Marianne Page, and Mateusz Filipski. 2011. "The Best of Times, the Worst of Times: Understanding Pro-cyclical Mortality," NBER Working Paper No. 17657.

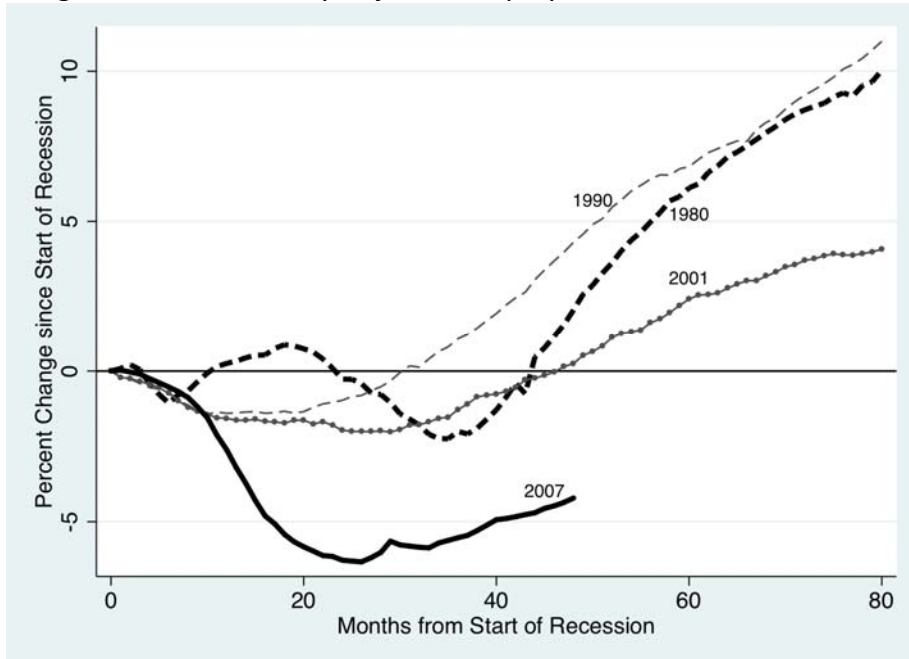
Verick, Sher. 2009. "Who is Hit Hardest During a Financial Crisis? The Vulnerability of Young Men and Women to Unemployment in and Economic Downturn." Institute for the Study of Labor (IZA) Discussion Paper No. 4359.

Figure 1: US Seasonally Adjusted Unemployment Rate, Months Since Peak



Source: Current Population Survey (Bureau of Labor Statistics (2012a)). Labor market peaks come from NBER (2011). 1980 recession combines the recessions beginning in 1/80 and 7/81 into one cycle.

Figure 2: US Seasonally Adjusted Employment, Months Since Peak



Source: Current Employment Statistics (Bureau of Labor Statistics (2012b)). Labor market peaks come from NBER (2011). 1980 recession combines the recessions beginning in 1/80 and 7/81 into one cycle.

Figure 3: Impact of State Unemployment Rate on Group Unemployment Rate, by Single Year of Age

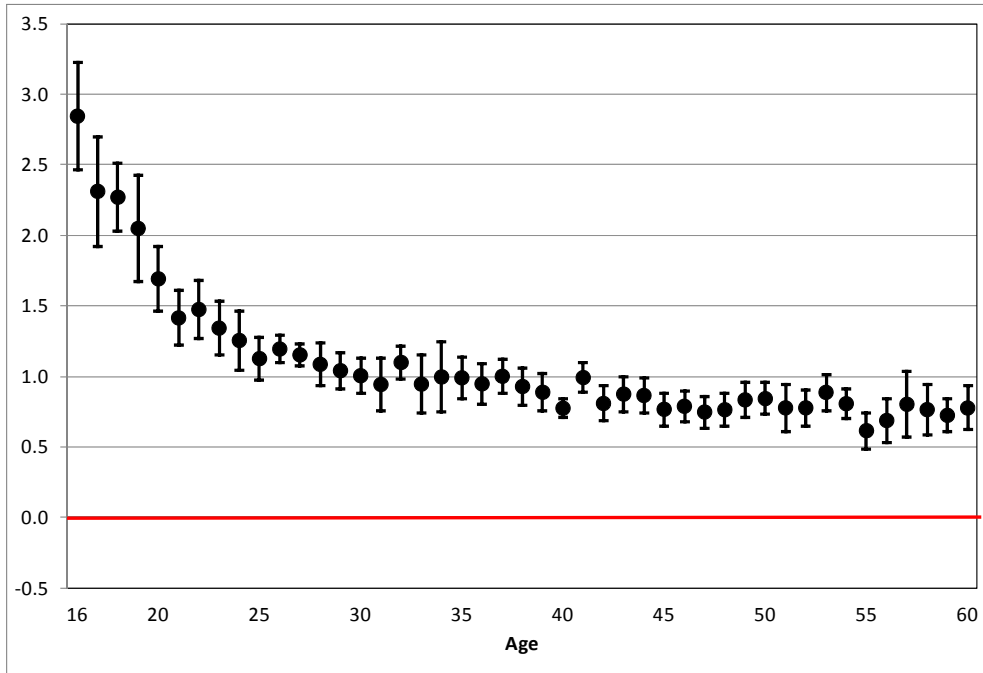
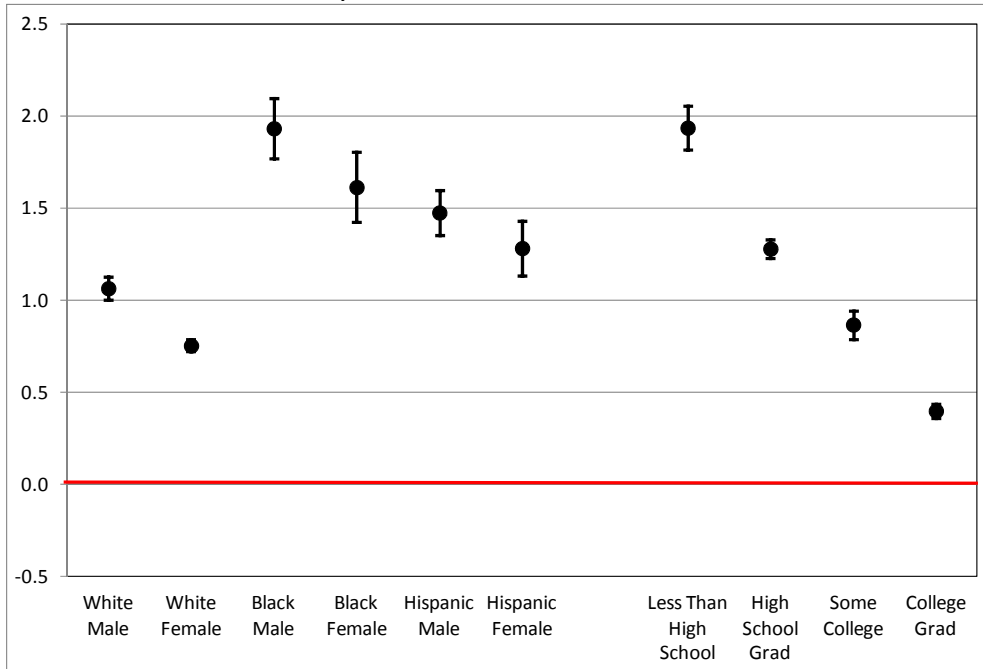


Figure 4: Impact of State Unemployment Rate on Group Unemployment Rate, by Race/Sex, and Education



Source: Authors' tabulations of the MORG for 1/1979-12/2011. Each point is the estimate on state unemployment rate from a separate regression (along with the 95% confidence interval) for a given demographic group. The model also includes fixed effects for demographic group, state, and year-month, as well as state linear time trends. See text for details.



Figure 5: Impact of State Unemployment Rate on Group Employment Rate, by Single Year of Age

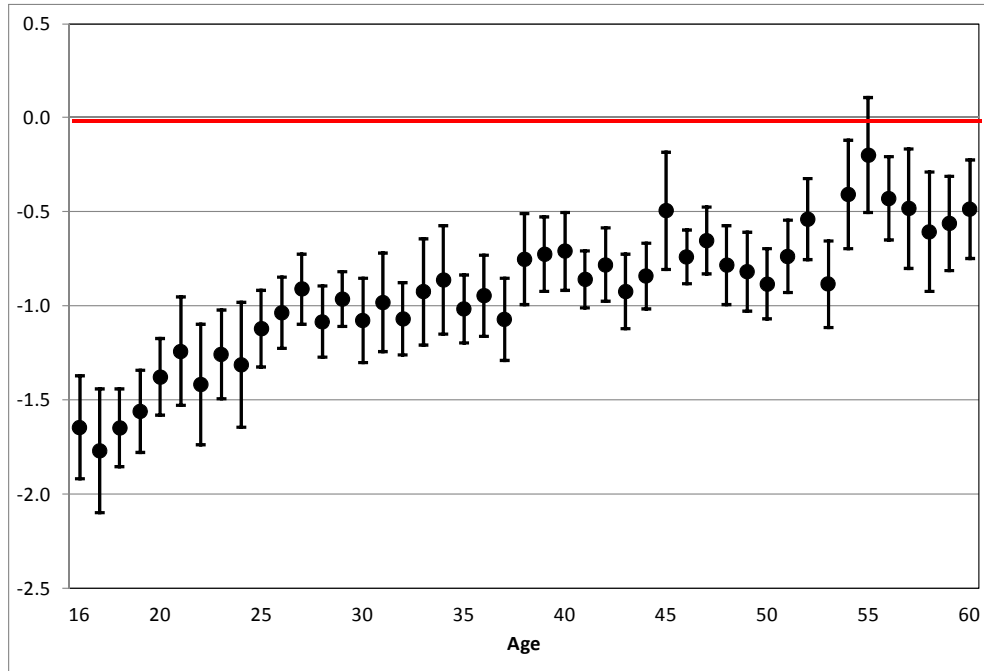
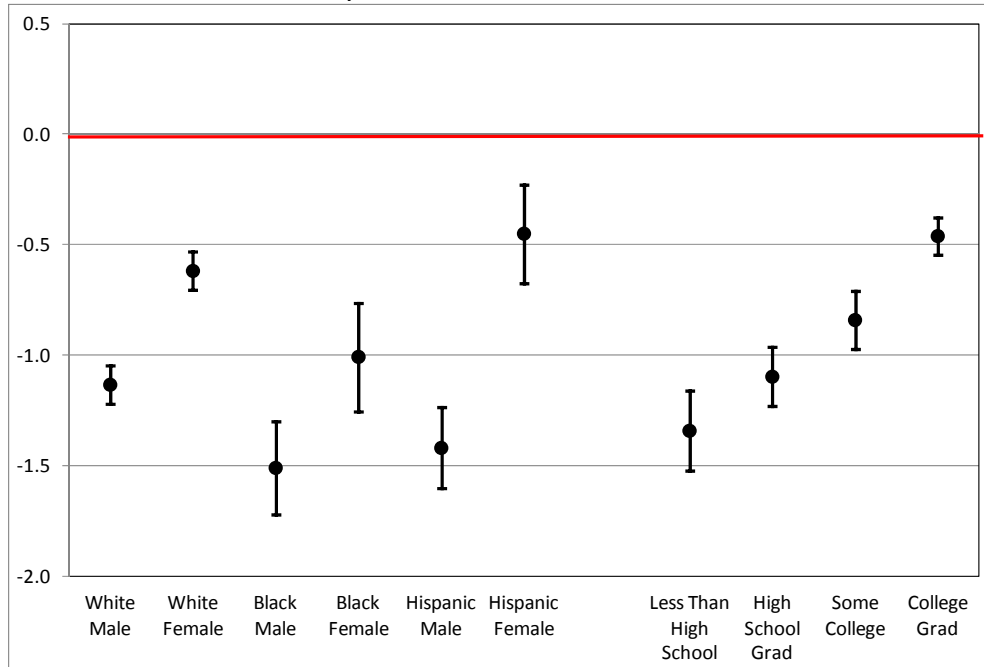
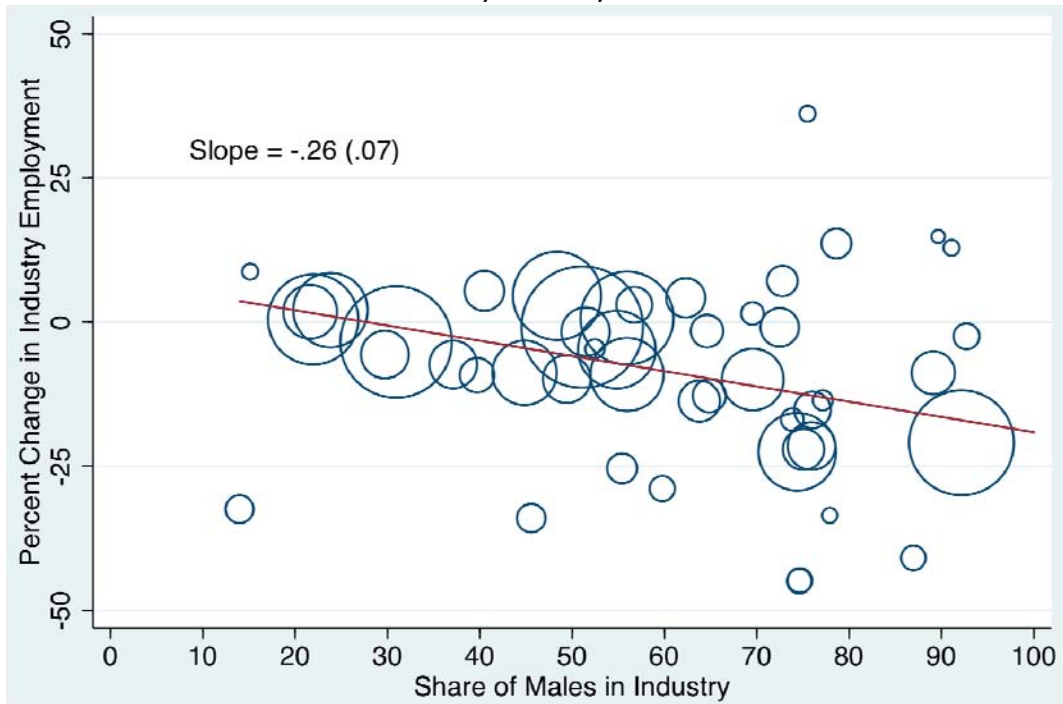


Figure 6: Impact of State Unemployment Rate on Group Employment Rate, By Race/Sex and Education



Source: Authors' tabulations of the MORG for 1/1979-12/2011. Each point is the estimate on state unemployment rate from a separate regression (along with the 95% confidence interval) for a given demographic group. The model also includes fixed effects for demographic group, state, and year-month, as well as state linear time trends. See text for details.

Figure 7: Percent Change in Employment over 2007 Recession Versus Share Male, by Industry



Source: Authors' tabulations of CPS-MORG. Observations are weighted by total industry employment in May 2007 (the start of the recession). Industry classification is based on 2-digit sectors from the 2002 North American Industry Classification System (NAICS).

Table 1: Labor Market Outcomes by Race, Gender, Education, and Age, May 2007

|                | Employment<br>Rate | Unemployment<br>Rate | Usual Weekly<br>Earnings<br>(2010\$) | Hours Last<br>Week |
|----------------|--------------------|----------------------|--------------------------------------|--------------------|
| White Men      | 81                 | 3.6                  | \$830                                | 34                 |
| White Women    | 71                 | 3.2                  | 499                                  | 25                 |
| Black Men      | 66                 | 9.1                  | 448                                  | 26                 |
| Black Women    | 59                 | 6.5                  | 401                                  | 24                 |
| Hispanic Men   | 79                 | 6.2                  | 524                                  | 32                 |
| Hispanic Women | 58                 | 4.9                  | 298                                  | 20                 |
| Age 16 to 19   | 33                 | 14.4                 | 69                                   | 8                  |
| Age 20 to 24   | 68                 | 6.4                  | 306                                  | 23                 |
| Age 25 to 44   | 81                 | 3.7                  | 679                                  | 32                 |
| Age 45 to 60   | 75                 | 3.3                  | 707                                  | 30                 |
| Less than HS   | 48                 | 10.1                 | 187                                  | 16                 |
| HS Grad        | 72                 | 5.4                  | 306                                  | 28                 |
| Some College   | 76                 | 3.6                  | 545                                  | 29                 |
| College Grad   | 86                 | 1.6                  | 1,039                                | 35                 |

Source: Authors' tabulations of CPS-MORG.

Table 2: Peak to Trough Changes in Unemployment and Employment Rates by Group, 1980 and 2007 Recessions

|                | Peak-to-Trough Changes in Unemployment Rate |                      | Peak-to-Trough Changes in Employment Rate |                      |
|----------------|---|----------------------|---|----------------------|
|                | May 1979 to Nov 1982                        | May 2007 to Oct 2009 | May 1979 to Nov 1982                      | May 2007 to Oct 2009 |
| White Men      | 5.79  | 6.47                 | <b>-4.79</b>                              | <b>-7.34</b>         |
| White Women    | 3.73  | 3.59                 | <b>1.92</b>                               | <b>-2.81</b>         |
| Black Men      | 11.91                                       | 9.50                 | -8.41                                     | -9.02                |
| Black Women    | 4.79  | 5.73                 | -0.85                                     | -6.14                |
| Hispanic Men   | 10.23                                       | 6.09                 | -10.94                                    | -6.25                |
| Hispanic Women | 3.63  | 6.46                 | -0.56                                     | -4.97                |
| Age 16 to 19   | 10.55                                       | 10.86                | -6.99                                     | -7.79                |
| Age 20 to 24   | 8.05  | 8.76                 | -5.39                                     | -8.69                |
| Age 25 to 44   | 5.29  | 5.78                 | <b>-2.05</b>                              | <b>-5.90</b>         |
| Age 45 to 60   | 3.57  | 3.89                 | -0.82                                     | -2.93                |
| Less than HS   | 10.83                                       | 8.12                 | -5.95                                     | -8.72                |
| HS Grad        | <b>5.96</b>                                 | <b>8.28</b>          | <b>-3.37</b>                              | <b>-7.99</b>         |
| Some College   | 3.64  | 5.17                 | <b>-0.02</b>                              | <b>-4.72</b>         |
| College Grad   | <b>1.75</b>                                 | <b>2.84</b>          | -1.35                                     | -2.15                |

Source: Authors' tabulations of CPS-MORG. Peak-to-trough dated using minimum and maximum seasonally adjusted US unemployment rates. Bold typeface indicates groups for which the difference between peak-to-trough changes in labor market outcomes in the two recessions is statistically significant at the 5% level. This significance test was implemented by a simple difference-in-differences regression as follows: using data for the four time periods 5/79, 11/82, 5/07 and 10/09, we regressed group-specific employment for each major demographic group on indicator variables for (1) 2007 recession (5/07 or 10/09), (2) trough periods (11/82 or 10/09), and (3) 2007 trough (10/09). The test is based on the statistical significance (at the 5% level) of indicator (3) for the 2007 trough.

Table 3: Actual and Predicted Percentage Point Change in Employment Rate, by group

|              | Employment Rate<br>May 2007 | May 2007 to October 2009 |               |
|--------------|-----------------------------|--------------------------|---------------|
|              |                             | Predicted<br>Change      | Actual Change |
| Men          | 81                          | -7.4                     | -7.1          |
| Women        | 71                          | -3.0                     | -3.4          |
| White        | 66                          | -5.1                     | -4.7          |
| Black        | 59                          | -4.8                     | -6.9          |
| Hispanic     | 58                          | -6.4                     | -6.3          |
| Age 16 to 19 | 33                          | -1.6                     | -7.3          |
| Age 20 to 24 | 68                          | -5.0                     | -8.3          |
| Age 25 to 44 | 81                          | -6.0                     | -5.5          |
| Age 45 to 60 | 85                          | -5.3                     | -3.3          |
| Less than HS | 48                          | -5.7                     | -4.8          |
| HS Grad      | <b>72</b>                   | -7.1                     | -6.7          |
| Some College | 76                          | -4.9                     | -6.6          |
| College Grad | 86                          | -3.2                     | -4.6          |

Source: Authors' tabulations of CPS-MORG. We create predicted changes in the employment level for each demographic group by multiplying the group's share of total employment in 30 industry-occupation cells at the peak (May 2007) by the U.S.-wide peak-to-trough change in total industry-occupation employment and summing across industry-occupation. The difference between the actual and predicted changes can be interpreted as the group-specific component of employment loss that operates above (or below) the direct effect of being in cyclical industry-occupations. The cells are defined by 10 industries by three occupations (managerial, clerical/services, and "blue collar").

Table A1: Impact of State Unemployment Rate on Group Unemployment Rate

|                | Estimates Across Recessions |                |                      | Estimates Across Recoveries |                |                      |
|----------------|-----------------------------|----------------|----------------------|-----------------------------|----------------|----------------------|
|                | 1980s                       | 2007           | p-value for equality | 1980s                       | 2007           | p-value for equality |
| White Men      | 1.09<br>(0.03)              | 1.14<br>(0.07) | 0.47                 | 1.13<br>(0.04)              | 0.98<br>(0.03) | 0.00***              |
| White Women    | 0.76<br>(0.03)              | 0.76<br>(0.05) | 0.99                 | 0.76<br>(0.03)              | 0.62<br>(0.03) | 0.00***              |
| Black Men      | 2.00<br>(0.09)              | 2.00<br>(0.14) | 0.99                 | 2.14<br>(0.09)              | 1.90<br>(0.10) | 0.01***              |
| Black Women    | 1.45<br>(0.07)              | 1.39<br>(0.09) | 0.54                 | 1.57<br>(0.07)              | 1.38<br>(0.06) | 0.00***              |
| Hispanic Men   | 1.59<br>(0.06)              | 1.72<br>(0.08) | 0.22                 | 1.69<br>(0.06)              | 1.45<br>(0.05) | 0.00***              |
| Hispanic Women | 1.40<br>(0.05)              | 1.33<br>(0.05) | 0.38                 | 1.31<br>(0.05)              | 1.19<br>(0.05) | 0.10*                |
| Age 16 to 19   | 2.11<br>(0.11)              | 2.24<br>(0.11) | 0.17                 | 2.04<br>(0.09)              | 2.19<br>(0.12) | 0.08*                |
| Age 20 to 24   | 1.51<br>(0.04)              | 1.54<br>(0.05) | 0.41                 | 1.47<br>(0.04)              | 1.42<br>(0.04) | 0.28                 |
| Age 25 to 44   | 0.97<br>(0.03)              | 1.10<br>(0.05) | 0.01**               | 1.02<br>(0.03)              | 0.99<br>(0.03) | 0.20                 |
| Age 45 to 60   | 0.70<br>(0.02)              | 0.85<br>(0.04) | 0.01***              | 0.78<br>(0.03)              | 0.80<br>(0.03) | 0.93                 |
| Less than HS   | 1.74<br>(0.06)              | 2.01<br>(0.09) | 0.00***              | 1.83<br>(0.04)              | 1.86<br>(0.09) | 0.76                 |
| HS Grad        | 1.21<br>(0.03)              | 1.40<br>(0.04) | 0.00***              | 1.23<br>(0.02)              | 1.31<br>(0.03) | 0.04**               |
| Some College   | 0.80<br>(0.04)              | 0.97<br>(0.04) | 0.01***              | 0.83<br>(0.03)              | 0.90<br>(0.06) | 0.44                 |
| College Grad   | 0.37<br>(0.03)              | 0.53<br>(0.04) | 0.01***              | 0.39<br>(0.02)              | 0.42<br>(0.03) | 0.58                 |

Source: Authors' tabulations of CPS-MORG for 1/1979-12/2011. Each panel presents estimates from pooled regression across demographic groups (e.g. the 4 age groups) and three periods (1980s recession, 2007 recession, rest of period). The regression includes the state unemployment rate, and the impact of the state unemployment rate is allowed to vary across the three periods and the demographic groups (e.g. 4 age groups). The model also includes fixed effects for demographic group, state and year-month and state linear time trends, as well as quadratic time trends and state fixed effects for each demographic subgroup.

Table A2: Impact of State Unemployment Rate on Group Employment Rate

|                       | Estimates Across Recessions |                 |                      | Estimates Across Recoveries |                 |                      |
|-----------------------|-----------------------------|-----------------|----------------------|-----------------------------|-----------------|----------------------|
|                       | 1980s                       | 2007            | p-value for equality | 1980s                       | 2007            | p-value for equality |
| <b>White Men</b>      | -0.88<br>(0.08)             | -1.03<br>(0.14) | 0.21                 | -1.00<br>(0.06)             | -0.87<br>(0.07) | 0.29                 |
| <b>White Women</b>    | -0.48<br>(0.07)             | -0.50<br>(0.11) | 0.81                 | -0.59<br>(0.05)             | -0.33<br>(0.06) | 0.01***              |
| <b>Black Men</b>      | -1.56<br>(0.10)             | -1.53<br>(0.18) | 0.80                 | -1.58<br>(0.09)             | -1.42<br>(0.11) | 0.19                 |
| <b>Black Women</b>    | -1.07<br>(0.10)             | -1.24<br>(0.15) | 0.19                 | -1.21<br>(0.08)             | -1.15<br>(0.10) | 0.60                 |
| <b>Hispanic Men</b>   | -1.52<br>(0.09)             | -1.68<br>(0.13) | 0.16                 | -1.59<br>(0.08)             | -1.46<br>(0.08) | 0.40                 |
| <b>Hispanic Women</b> | -0.67<br>(0.11)             | -0.90<br>(0.13) | 0.12                 | -0.90<br>(0.10)             | -0.70<br>(0.09) | 0.02**               |
| <b>Age 16 to 19</b>   | -1.44<br>(0.08)             | -1.69<br>(0.14) | 0.05**               | -1.64<br>(0.08)             | -1.55<br>(0.07) | 0.45                 |
| <b>Age 20 to 24</b>   | -1.29<br>(0.11)             | -1.32<br>(0.14) | 0.74                 | -1.25<br>(0.07)             | -1.26<br>(0.06) | 0.63                 |
| <b>Age 25 to 44</b>   | -0.80<br>(0.06)             | -0.88<br>(0.12) | 0.48                 | -0.84<br>(0.04)             | -0.73<br>(0.07) | 0.33                 |
| <b>Age 45 to 60</b>   | -0.34<br>(0.06)             | -0.61<br>(0.13) | 0.02**               | -0.60<br>(0.04)             | -0.48<br>(0.07) | 0.29                 |
| <b>Less than HHS</b>  | -1.14<br>(0.10)             | -1.48<br>(0.17) | 0.01***              | -1.32<br>(0.08)             | -1.31<br>(0.15) | 0.93                 |
| <b>HS Grad</b>        | -0.94<br>(0.08)             | -1.13<br>(0.12) | 0.10*                | -1.01<br>(0.05)             | -0.98<br>(0.06) | 0.81                 |
| <b>Some College</b>   | -0.61<br>(0.09)             | -0.74<br>(0.11) | 0.26                 | -0.70<br>(0.06)             | -0.68<br>(0.05) | 0.86                 |
| <b>College Grad</b>   | -0.25<br>(0.07)             | -0.32<br>(0.12) | 0.56                 | -0.28<br>(0.04)             | -0.15<br>(0.05) | 0.14                 |

Source: Authors' tabulations of CPS-MORG for 1/1979-12/2011. Each panel presents estimates from pooled regression across demographic groups (e.g. the 4 age groups) and three periods (1980s recession, 2007 recession, rest of period). The regression includes the state unemployment rate, and the impact of the state unemployment rate is allowed to vary across the three periods and the demographic groups (e.g. 4 age groups). The model also includes fixed effects for demographic group, state, and year-month, state linear time trends, as well as quadratic time trends and state fixed effects for each demographic subgroup.

Figure A1: Impact of State Unemployment Rate on Group Unemployment Rate, by Single Year of Age (No Year-Month Fixed Effects)

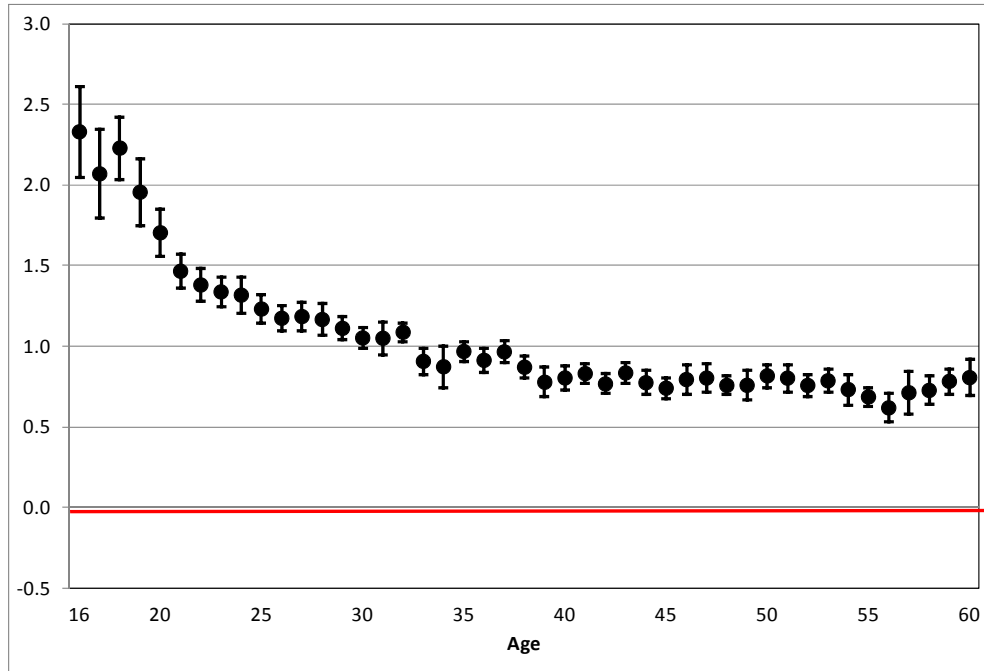
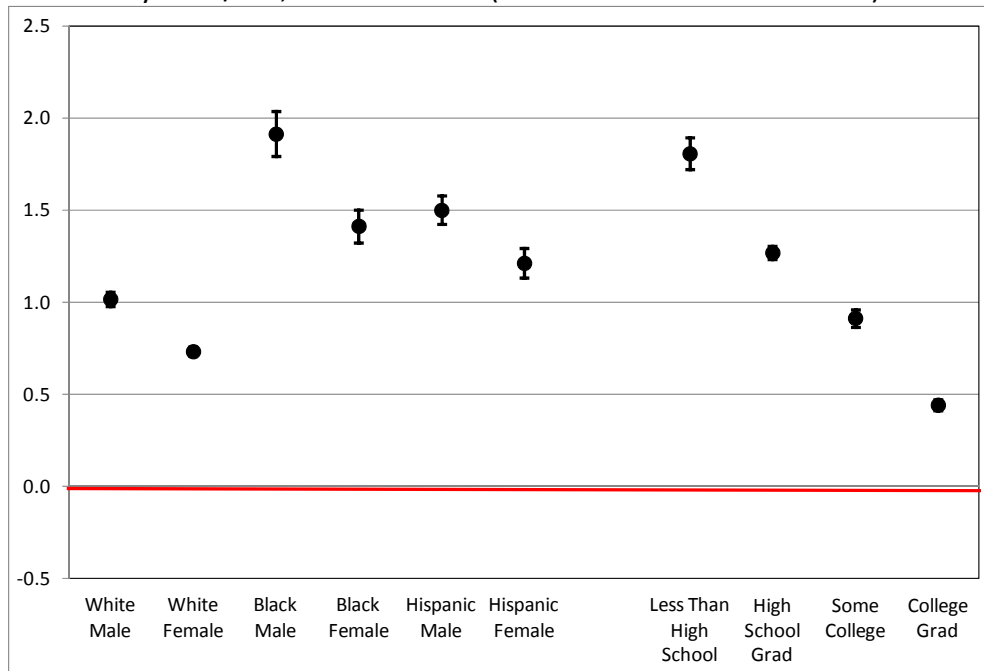


Figure A2: Impact of State Unemployment Rate on Group Unemployment Rate, by Race/Sex, and Education (No Year-Month Fixed Effects)



Source: Authors' tabulations of CPS-MORG for 1/1979-12/2011. Each point is the estimate on state unemployment rate from a separate regression (along with the 95% confidence interval) for a given demographic group. The model also includes fixed effects for demographic group, and state, as well as state linear time trends.



Figure A3: Impact of State Unemployment Rate on Group Employment Rate, by Single Year of Age (No Year-Month Fixed Effects)

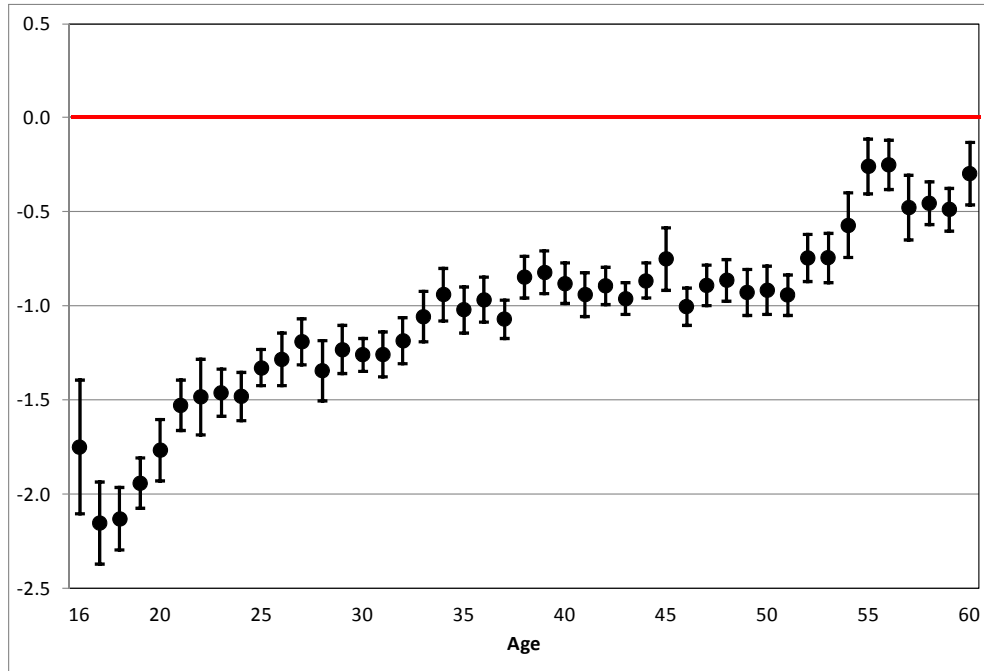
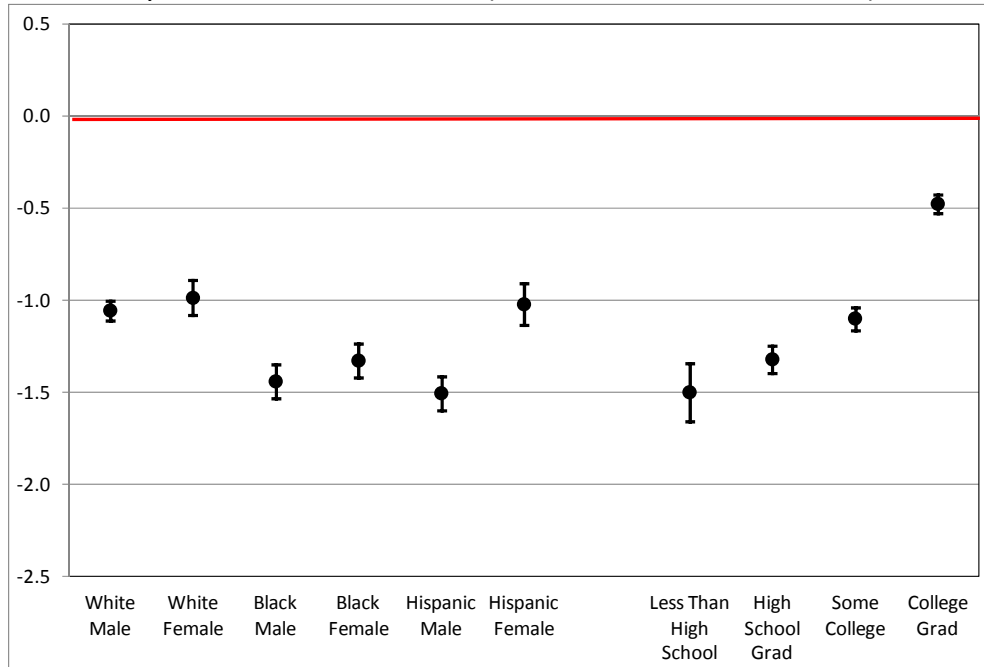


Figure A4: Impact of State Unemployment Rate on Group Employment Rate, By Race/Sex and Education (No Year-Month Fixed Effects)



Source: Authors' tabulations of CPS-MORG for 1/1979-12/2011. Each point is the estimate on state unemployment rate from a separate regression (along with the 95% confidence interval) for a given demographic group. The model also includes fixed effects for demographic group, and state, as well as state linear time trends.