

This PDF is a selection from an out-of-print volume from the National Bureau of Economic Research

Volume Title: International Migrations, Volume I: Statistics

Volume Author/Editor: Walter F. Willcox

Volume Publisher: NBER

Volume ISBN: 0-87014-013-2

Volume URL: <http://www.nber.org/books/fere29-1>

Publication Date: 1929

Chapter Title: Front matter, preface, tables of content

Chapter Author: Walter F. Willcox

Chapter URL: <http://www.nber.org/chapters/c5125>

Chapter pages in book: (p. 1 - 46)

INTERNATIONAL MIGRATIONS

VOLUME I
STATISTICS

COMPILED ON BEHALF OF THE
INTERNATIONAL LABOUR OFFICE, GENEVA

WITH

INTRODUCTION AND NOTES

By

IMRE FERENCZI

AND EDITED ON BEHALF OF THE
NATIONAL BUREAU OF ECONOMIC RESEARCH

By

WALTER F. WILLCOX

NEW YORK
NATIONAL BUREAU OF ECONOMIC
RESEARCH, Inc.

1929

Copyright, 1929, by
NATIONAL BUREAU OF ECONOMIC RESEARCH, INC.
All rights reserved

First printing, May, 1929

PRINTED IN THE UNITED STATES OF AMERICA BY
THE MESSENGER PRESS, ST. ALBANS, VT.

PREFACE

The present volume has grown out of the appointment in 1924 by the Social Science Research Council of a Committee on the scientific aspects of human migration, a subject of great and growing interest in the United States upon which further studies supported by an adequate subvention were thought to be needed. Previous American work in this field has been done mainly through official channels which have necessarily influenced its character and conclusions, or through private associations, often of a propagandist tendency, or by single scholars whose time and resources were narrowly limited.

This Committee approved an initial project for a statistical study of international migration and entrusted its preparation to the National Bureau of Economic Research which asked the writer to organize and direct the enquiry. It has fallen into two parts: first, the preparation of the present volume containing international migration statistics from the beginning of the record in each country through 1924 and, secondly, the preparation of a series of interpretative studies of migration statistics written by scholars in different countries. Both volumes aim to be international and objective in dealing with a problem upon which judgments, national and individual, differ widely.

To further the project by enlisting international co-operation, the writer visited Geneva where he fortunately obtained the support of the International Labour Office. That Office through its Migration Section ably headed by Professor Louis Varlez had already done important pioneer work in improving current migration statistics. Under authorization of the peace treaties it had established or was in a position quickly to establish direct and cordial relations with the offices in all countries responsible for migration statistics past or present, a matter the importance of which persons familiar with the leisurely and circumlocutory way in which routine correspondence between governments is often handled will be quick to appreciate. The International Labour Office was thus in a favorable position to push its researches back into the pre-war period.

The preparation of this volume was entrusted to that Office under an agreement that the net cost should be borne by the National

10.00

Bureau of Economic Research. The office at the request of the writer placed Dr. Imre Ferenczi in immediate charge of the work. While he had been acting chief of the Migration Section he had prepared and brought out the report on "Mouvements Migratoires 1920-23" which by a fortunate coincidence came from the press on the very day on which the writer arrived in Geneva and the excellence of which immediately roused his admiration. Dr. Ferenczi is to be regarded as the author of this book and particularly of the Introduction and Notes; the relation of the undersigned to it has been that of adviser, editor and liaison agent between the National Bureau of Economic Research in New York and the International Labour Office in Geneva. In that capacity he has carefully followed its progress and is glad to commend the conscientious care and expert knowledge shown in its preparation. It is far more than a mere compilation of known and available migration statistics. Much material hitherto unknown has been disinterred and much energy, persistence and organizing ability have gone into its preparation within a period of ten months. Evidence to support this conclusion will be found throughout the volume but especially in Dr. Ferenczi's introduction and notes.

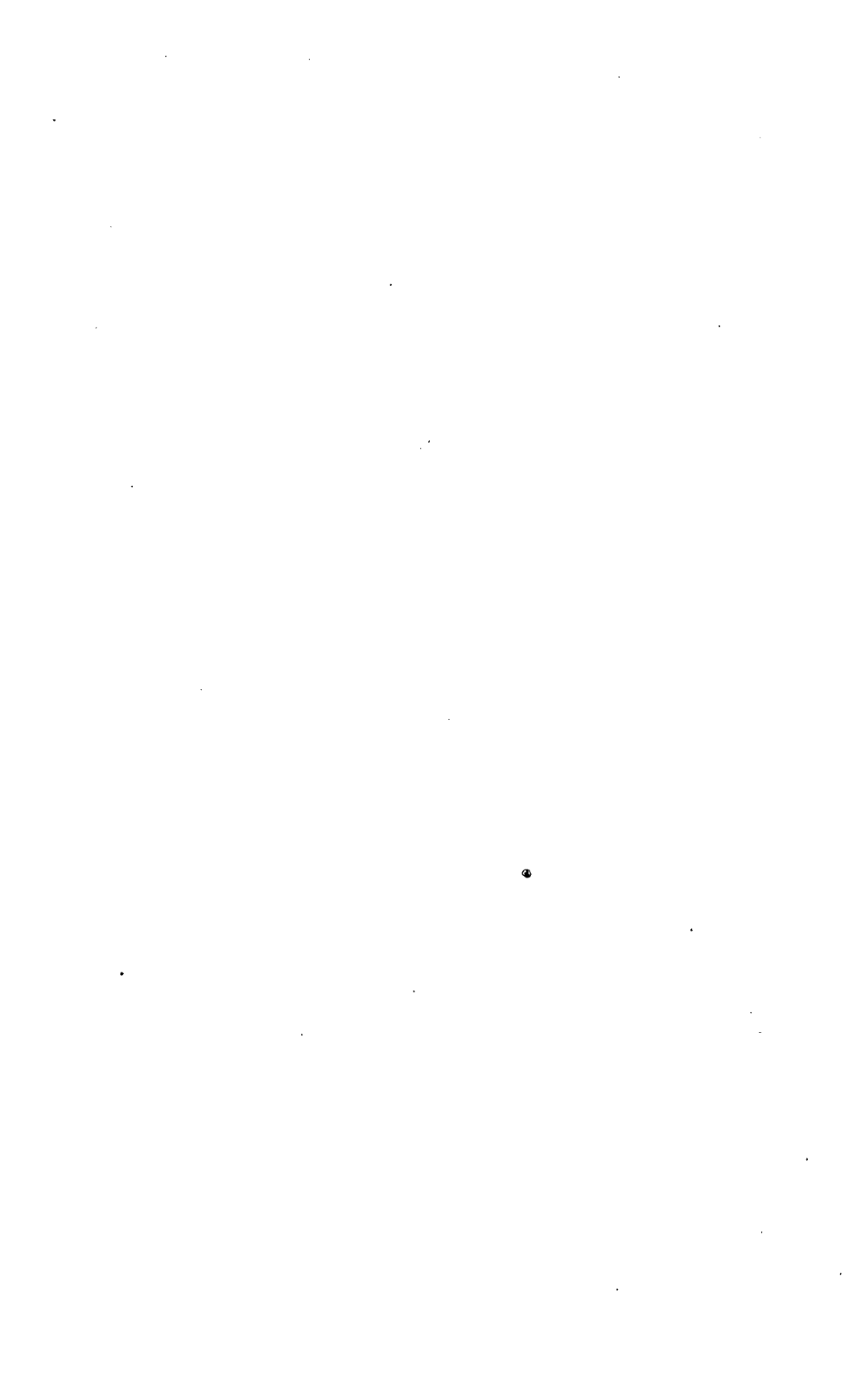
WALTER F. WILLCOX.

RESOLUTION

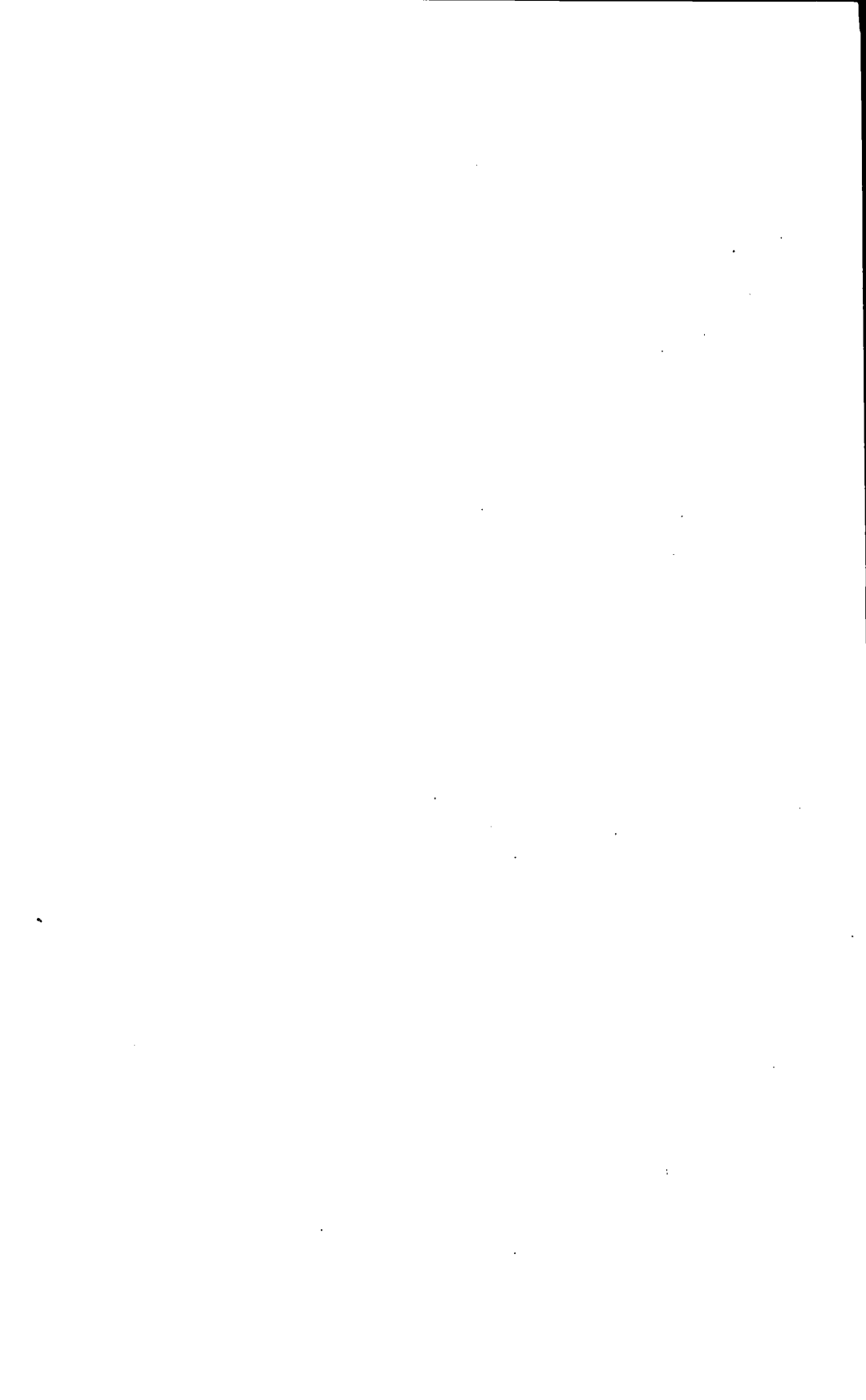
ON THE RELATION OF THE DIRECTORS TO THE ECONOMIC WORK OF THE BUREAU

- 1—The object of the Bureau is to ascertain and to present to the public important economic facts and the interpretation thereof in a scientific and impartial manner, free from bias and propoganda. The Board of Directors is charged with the responsibility of ensuring and guaranteeing to the public that the work of the Bureau is carried out in strict conformity with this object.
- 2—The Directors shall appoint one or more directors of research chosen upon considerations of integrity, ability, character, and freedom from prejudice, who shall undertake to conduct economic researches in conformity with the principles of the Bureau.
- 3—The director or directors of research shall submit to the members of the Board, or to its executive committee when such is constituted and to which authority has been delegated by the Board, proposals in respect to researches to be instituted; and no research shall be instituted without the approval of the Board, or of its executive committee.
- 4—Following approval by the Board, or its executive committee, of a research proposed, the director or directors of research shall as soon as possible submit to the members of the Board, by written communication, a statement of the principles to be pursued in the study of the problem and the methods to be employed; and the director or directors of research shall not proceed to investigate, study, and report in detail, until the plan so outlined has been approved by the board or the executive committee thereof.
- 5—Before the publication of the results of an inquiry the director or directors of research shall submit to the Board a synopsis of such results, drawing attention to the main conclusions reached, the major problems encountered and the solutions adopted, the nature of the sources from which the basic facts have been derived, and such other information as in their opinion shall have a material bearing on the validity of the conclusions and their suitability for publication in accordance with the principles of the Bureau.
- 6—A copy of any manuscript proposed to be published shall also be submitted to each member of the Board, and every member shall be entitled if publication be approved, to have published also a memorandum of any dissent or reservation he may express, together with a brief statement of his reasons therefore, should he so desire. The publication of a volume does not, however, imply that each member of the Board of Directors has read the manuscript and passed upon its validity in every detail.
- 7—The results of any inquiry shall not be published except with the approval of at least a majority of the entire Board and a two-thirds majority of all those members of the Board who shall have voted on the proposal within the time fixed for the receipt of votes on the publication proposed; such limit shall be 45 days from the date of the submission of the synopsis and manuscript of the proposed publication, except that the Board may extend the limit in its absolute discretion, and shall upon the request of any member extend the limit for a period not exceeding 30 days.
- 8—A copy of this memorandum shall, unless otherwise determined by the Board, be printed in each copy of every work published by the Bureau.

Adopted Oct. 25, 1926.



INTERNATIONAL MIGRATIONS



CONTENTS

	PAGE
PREFACE (Walter F. Willcox)	7
INTERNATIONAL MIGRATION STATISTICS (I. FERENCZI)	
INTRODUCTION	
History and Conduct of the Inquiry	53
Collection of the Materials	56
Elaboration of the Materials	65
GENERAL INTRODUCTION TO THE NATIONAL TABLES	67
GENERAL INTRODUCTION TO THE INTERNATIONAL TABLES,	72
List of Countries Included	76
GENERAL INTRODUCTION TO THE HISTORICAL SURVEY	78
PART I. PROLETARIAN MASS MIGRATION, 19TH AND 20TH CENTURIES	
INTRODUCTION	81
INTERCONTINENTAL EMIGRATION ACCORDING TO NATIONAL STATISTICS:	
<i>Europe:—</i>	
Austria-Hungary	89
Balkan States	93
Belgium	96
British Isles	97
France	105
Germany	114
Italy	122
The Netherlands	125
Poland	126
Portugal	128
Russia	129
Scandinavia	131
Spain	132
Switzerland	136
<i>Asia:—</i>	
British India	140
Intercontinental movements	142
Intercontinental destinations	143
China	148
Volume according to Chinese port statistics	150
Continental destinations	152
Intercontinental destinations	155
Japan	160
Intercontinental destinations	161
Continental destinations	164
Sex	165

MIGRATIONS ACCORDING TO INTERNATIONAL STATISTICS:	PAGE
INTERCONTINENTAL MOVEMENTS—	
VOLUME AND DIRECTION:	
From Immigration statistics	167
From Emigration statistics	183
Significance of countries of transit	187
Movements from important countries of emigration	189
Returning emigrants; net emigration and immigration; migration and population	196
SEX AND AGE	210
OCCUPATIONS	215
CONTINENTAL MIGRATIONS	223
PART II. STATISTICS OF MIGRATION	
INTERNATIONAL TABLES	229
Notes to International Tables	349
NATIONAL TABLES	357
BIBLIOGRAPHY	1085
INDEX	1087

LIST OF TABLES

LIST OF INTERNATIONAL TABLES

TABLE	PAGE
1. Intercontinental emigration of citizens 1846 to 1924	230
(a) Absolute figures	
2. Intercontinental emigration of citizens 1846 to 1924	232
(b) Percentages (Europe only)	
3. Continental emigration of citizens 1876 to 1924	233
4. Intercontinental emigration of aliens 1846 to 1924	234
5. Continental emigration of aliens 1896 to 1924	235
6. Intercontinental immigration of aliens 1821 to 1924	236
(a) Absolute figures	
7. Intercontinental immigration of aliens 1901 to 1924	239
(b) Percentages (America only)	
8. Continental immigration of aliens 1881 to 1924	239
9. Intercontinental immigration of citizens 1876 to 1924	240
10. Continental immigration of citizens 1886 to 1924	240
11. Intercontinental emigration of citizens by country of future residence. 1866 to 1924	241
(a) Absolute figures	
12. Intercontinental emigration of citizens by country of future residence 1866 to 1924	251
(b) Percentages	
13. Immigration of aliens by country of last residence . . . 1821 to 1924	261
(a) Absolute figures	
14. Immigration of aliens by country of last residence . . . 1821 to 1924	274
(b) Percentages	
15. Intercontinental immigration of citizens by country of last last residence 1876 to 1924	288
(a) Absolute figures	
16. Intercontinental immigration of citizens by country of last residence 1876 to 1924	291
(b) Percentages	
17. Continental emigration of citizens by country of future residence 1876 to 1924	294
(a) Absolute figures	
18. Continental emigration of citizens by country of future residence 1876 to 1924	295
(b) Percentages	
19. Distribution of emigrant citizens by sex and age 1851 to 1924	296
(a) Absolute figures	
20. Distribution of emigrant citizens by sex and age 1851 to 1924	303
(b) Percentages	
21. Distribution of emigrant aliens by sex and age 1851 to 1924	310
(a) Absolute figures	
22. Distribution of emigrant aliens by sex and age 1851 to 1924	314
(b) Percentages	

TABLE	PAGE
23. Distribution of immigrant aliens by sex and age . . . 1841 to 1924 (a) Absolute figures	318
24. Distribution of immigrant aliens by sex and age . . . 1841 to 1924 (b) Percentages	323
25. Distribution of immigrant citizens by sex and age . . . 1876 to 1924 (a) Absolute figures	328
26. Distribution of immigrant citizens by sex and age . . . 1876 to 1924 (b) Percentages	331
27. Distribution of intercontinental emigrant citizens by occu- pations 1871 to 1924 (a) Absolute figures	334
28. Distribution of intercontinental emigrant citizens by occu- pations 1871 to 1924 (b) Percentages	338
29. Distribution of intercontinental immigrant citizens by occupations 1891 to 1924 (a) Absolute figures	340
30. Distribution of intercontinental immigrant citizens by occupations 1891 to 1924 (b) Percentages	341
31. Distribution of immigrant aliens by occupations . . . 1856 to 1924 (a) Absolute figures	342
32. Distribution of immigrant aliens by occupations . . . 1856 to 1924 (b) Percentages	344
33. Distribution of emigrant aliens by occupations . . . 1908 to 1924 (a) Absolute figures	346
34. Distribution of emigrant aliens by occupations . . . 1908 to 1924 (b) Percentages	347
35. Migrants in transit (European countries) outgoing . . . 1856 to 1924 (a) Absolute figures	348
36. Migrants in transit (European countries) outgoing . . . 1856 to 1924 (b) Percentages	348
Footnotes to International Tables	349-356

LIST OF NATIONAL TABLES

17

NORTH AMERICA

NORTHERN

CANADA

TABLE	PAGE
I. Immigration (cabin and other passengers) through the ports of Quebec and Montreal, by countries of origin, 1816-80	360
II. Immigration to Canada, by country of last residence, 1881-1900	361
III. Distribution of immigrants (steerage) through Quebec and Montreal, by sex and age, 1832-43	361
IV. Distribution of cabin and steerage passengers landed and of passengers in transit for the United States through Quebec and Montreal, by sex, age and occupation, 1842-67	362
V. Settlers and immigrants in transit, 1866-91	363
VI. Distribution of immigrants to Canada, by nationality, July 1, 1900 to March 31, 1920	364
VII. Total immigration (calendar years), 1903-20	366
VIII. Distribution of immigrants, by nationality (calendar years), 1920-24	367
IX. Distribution of immigrants, by sex and age, 1920-24	368
X. Chinese immigration, 1886-1924	368

New Brunswick, Nova Scotia and Prince Edward Island

XI. Immigrants landed, 1842-66	369
--	-----

MIQUELON AND SAINT PIERRE

I. Distribution of free immigrants, by sex and age, 1884	371
--	-----

NEWFOUNDLAND AND LABRADOR

I. Immigrants landed, 1842-65	372
II. Immigration and emigration, 1903-13	372
III. Immigration and emigration, 1903-24	372

UNITED STATES

IMMIGRATION

I. Distribution of alien passengers admitted, by nationality, 1820-68	377
II. Distribution, by country of origin or nationality, of immigrant aliens admitted (fiscal years ended June 30), 1869-98	384

LIST OF NATIONAL TABLES

TABLE	PAGE
III. Admission of immigrant aliens, by country of last residence (fiscal years ended June 30), 1899-1924	389
IV. Immigration of aliens (calendar years), 1833-42 and 1851-1924	394
V. Distribution of immigrant aliens admitted, by sex (fiscal years), 1820-50	395
VI. Distribution of immigrant aliens by sex (calendar years), 1851-1924	396
VII. Distribution of total number of passengers arrived 1820-67, and of immigrant aliens 1868-1924, by age	397
VIII. Distribution of total number of passengers arrived 1820-67 and of immigrant aliens 1868-1924, by occupation	399
IX. Distribution of passengers arrived, by sex and country of birth, 1820-55	401
IXa. Distribution of immigrant aliens (fiscal years ended June 30), by sex and country of origin or nationality, 1869-98	418
X. Distribution of immigrant aliens admitted, by sex and race or people, 1899-1924	432
XI. Distribution of immigrant aliens admitted, by age and race or people, 1899-1924	444
XII. Distribution of immigrant aliens admitted, by occupation and race or people, 1899-1924	[450]
XIII. Distribution of immigrant aliens admitted, by race or people and country of last residence, 1899-1924	460

EMIGRATION

XIV. Total passengers departed for foreign countries and distribution by sex and age of passengers other than cabin, 1868-1902	471
XV. Emigration of aliens by country of future residence, 1908-24	472
XVI. Distribution of emigrant aliens departed, by sex and age, 1908-24	474
XVII. Distribution of emigrant aliens departed, by sex (calendar years), 1908-24	474
XVIII. Distribution of emigrant aliens departed, by occupation, 1908-24	475
XIX. Distribution of emigrant aliens departed, by sex and race or people, 1908-24	476
XX. Distribution of emigrant aliens departed, by race or people and country of future residence, 1908-24	479
XXI. United States citizens permanently departed, by principal countries of future permanent residence (fiscal years ended June 30) 1918-24	482
XXII. United States citizens permanently departed (calendar years), 1920-24	482
XXIII. Distribution by principal races or peoples of immigrant aliens admitted from Austria-Hungary, 1899-1910	483
XXIIIa. idem from Austria, 1910-24	483
XXIIIb. idem from Hungary, 1910-24	484
XXIV. idem from Belgium, 1899-1924	485
XXV. idem from France, 1899-1924	485
XXVI. idem from Czechoslovakia, 1920-24	486
XXVII. idem from Germany, 1899-1924	486

LIST OF NATIONAL TABLES

19

TABLE	PAGE
XXVIII. Distribution by principal races or peoples of immigrant aliens admitted from Italy, 1899-1924	486
XXIX. idem from Poland, 1920-24	487
XXX. idem from Portugal, 1899-1924	487
XXXI. idem from Rumania, 1899-1924	487
XXXII. idem from Russia and Finland, 1899-1924	488
XXXIII. idem from the Serb, Croat and Slovene State, 1920-24	489
XXXIV. idem from Switzerland, 1899-1924	489
XXXV. idem from Turkey in Europe, 1899-1924	489
XXXVI. idem from the United Kingdom, 1899-1924	490
XXXVII. idem from Turkey in Asia, 1899-1924	491
XXXVIII. idem from British North America, 1899-1924	492
XXXIX. idem from Mexico, 1899-1924	493
XL. idem from the West Indies, 1899-1924	493
XLI. Distribution by principal races or peoples of emigrant aliens departed for Austria-Hungary, 1908-09	494
XLIa. idem for Austria, 1910-24	494
XLIb. idem for Hungary, 1910-24	495
XLII. idem for Czechoslovakia, 1920-24	496
XLIII. idem for Germany, 1908-24	496
XLIV. idem for Italy, 1908-24	496
XLV. idem for Portugal, 1908-24	497
XLVI. idem for Rumania, 1908-24	497
XLVII. idem for Russia and Finland, 1908-24	497
XLVIII. idem for the Serb, Croat and Slovene State, 1920-24	498
XLIX. idem for Switzerland, 1908-24	498
L. idem for Turkey, 1908-24	498
LI. idem for British North America, 1908-24	499

SOUTHERN

MEXICO

I. Distribution of immigrant aliens by sex and age, 1909-1910	501
II. Distribution of immigrants, by occupation and sex, 1909	501
III. Distribution of immigrants, by country of last residence, 1909	502
IV. Distribution of immigrant aliens, by nationality, 1909-1924	503
V. Distribution of emigrant aliens, by nationality, 1911-1924	504
VI. Distribution of immigrants, by occupation, 1922-1924	505

CENTRAL AMERICA

AND

WEST INDIES AND BERMUDAS

BRITISH WEST INDIES

I. Immigrants introduced into the West Indian Colonies, by country of origin and colony of immigration, 1834-72	506
---	-----

LIST OF NATIONAL TABLES

TABLE	PAGE
Ia. Return of immigrants introduced, by country of origin and colonies of immigration, since abolition of slavery, 1834-72	510
II. Immigrants and liberated Africans introduced into the West Indian Colonies, by colony of immigration, 1873-75	514
III. Immigrants into the West Indies, by country of origin, 1873-75	514
IV. Immigrants, liberated Africans and Kroomen returned to their own countries from the British West Indian Colonies, 1843-72	514
<i>Bahamas</i>	
V. Immigration and emigration of aliens (contract laborers), 1906-15	515
VI. Distribution of emigrant and immigrant citizens from and into Florida, by sex, 1911-15	515
<i>Barbados</i>	
VII. Immigration and emigration, 1909-24	515
<i>Bermuda</i>	
VIII. Immigration and emigration, 1904-24	516
<i>British Guiana</i>	
IX. Immigration, by country of last residence, 1868-81	516
X. Emigration, by country of future residence, 1869-81	517
XI. Immigration from India of indentured immigrants (coolies), by sex, and other immigrants, 1882-1900	517
XII. Emigration to the East Indies (coolies), by sex, 1882-1900	518
XIII. Immigrants and emigrants from and to all countries and indentured East Indians, 1900-24	518
XIV. Distribution of immigrants and emigrants, by sex and nationality or race, 1924	519
<i>Jamaica</i>	
XV. Immigration and emigration, 1900-24	519
<i>Trinidad and Tobago</i>	
XVI. Total number of coolies introduced into and sent away from Trinidad at the public expense, 1871-1900	520
XVII. Immigration and emigration of indentured East Indians, 1900-24	520
XVIII. Immigration and emigration, total and United Kingdom, 1918-23	520
CUBA	
I. Distribution of immigrant aliens admitted, by sex, 1901-24	523
II. Distribution of immigrant aliens admitted, by age, 1911-24	523

LIST OF NATIONAL TABLES

21

TABLE	PAGE
III. Distribution of immigrant aliens admitted, by occupation, 1911-24	524
IV. Distribution of immigrant aliens admitted, by nationality, 1901-24	525
V. Immigrant aliens admitted, by country of departure, 1904-1924,	529
GUADELOUPE	
I. Migration movement of the East Indian population, 1854-83	534
II. Passengers arrived at Guadeloupe from Europe and departed from Guadeloupe to Europe, 1923-24	534
MARTINIQUE	
I. Distribution of extra-European immigrants in 1883	535
II. Distribution of immigrants, by sex and nationality, 1923-24	535
III. Distribution of emigrants, by sex, age and country of destination, 1923-24	536
SOUTH AMERICA	
NORTH COAST	
DUTCH GUIANA	
I. Immigration of aliens, by country of last residence, and emigration of aliens, 1853-1924	537
II. Distribution of Javanese immigrants and emigrants, by sex, age and occupation, 1923	537
VENEZUELA	
I. Immigration and emigration, 1919-21, 1924	538
EAST COAST	
ARGENTINA	
I. Distribution, by sex, of immigrant aliens, by sea, 1857-1924	539
II. Distribution, by age, of immigrant aliens, by sea (decades), 1857-1924	540
IIa. Distribution, by sex and age, of immigrant aliens, by sea, 1921-24	541
III. Distribution, by occupation, of immigrant aliens, by sea, (decades), 1857-1924	541
IIIa. Distribution, by occupation, of immigrant aliens, by sea, 1921-24	542
IV. Emigration of aliens, by sea, 1871-1924	542
V. Distribution, by nationality, of immigrant and emigrant aliens, by sea, 1857-1924	543
VI. Arrivals and departures of second and third class passengers, by river shipping, 1867-1924	547

LIST OF NATIONAL TABLES

BRAZIL

TABLE	PAGE
I. Distribution of immigrants admitted, by nationality, 1820-1907	549
II. idem. 1908-24	551
III. Distribution of immigrant aliens admitted at Rio de Janeiro and Santos, by sex, age and occupation, 1890-1913	553
IV. Distribution of immigrants admitted, by sex, 1920-22	554
V. Distribution of immigrants, by age and occupation, 1922	554
VI. Distribution of emigrants departed via Rio de Janeiro and Santos, by nationality, 1899-1907	555
VII. Emigration via Rio de Janeiro and Santos, by country of destination, 1904-12	556
VIII. Distribution of second and third class emigrants departed, by nationality, 1920-21	556

PARAGUAY

I. Distribution of immigrants, by nationalities, 1881-1906 and 1922-23	559
Ia. Immigrants (chiefly aliens), 1907-23	561
II. Distribution of immigrants (chiefly aliens) by sex and age, 1881-1906	561
IIa. Distribution of immigrant aliens, by sex and age, 1922-23	562
III. Distribution of immigrants (chiefly aliens), by occupation, 1881-1906, 1922-23	562

URUGUAY

I. Passengers inward and outward (citizens and aliens) by foreign ocean commerce at the Port of Montevideo (all classes) 1835-42, 1866-1923	566
Ia. Movement of passengers by foreign ocean and river commerce through all ports, 1893-1924	568
II. Distribution of immigrants who applied for work at the Commissariat-General of Immigration, by sex, age and occupation, 1867-90	569
IIa. Distribution of passengers inward by foreign ocean commerce at the Port of Montevideo (all classes), by sex and age, 1879-1901 and 1913-21	570
III. Distribution of passengers inward by foreign ocean commerce at the Port of Montevideo (all classes), by occupation, 1879-1921	571
IV. Distribution of passengers inward at the Port of Montevideo, by nationality, 1835-42	571
IVa. Passengers inward by foreign ocean commerce at the Port of Montevideo (all classes) and distribution of immigrants who applied for work at the Commissariat-General of Immigration, by nationality, 1867-90	572
IVb. Distribution of passenger aliens inward by foreign ocean commerce at the Port of Montevideo (all classes) by nationality, 1879-1921	573

LIST OF NATIONAL TABLES

23

TABLE	PAGE
V. Distribution of immigrants housed at the immigrants hostelry at Montevideo by nationality, 1908-24	574
VI. Distribution of passengers outward by foreign ocean commerce at the Port of Montevideo (all classes), by sex and age, 1879-1921	575
VII. Distribution of passengers outward by foreign ocean commerce at the Port of Montevideo (all classes) by occupation, 1879-1921	576
VIII. Distribution of passengers alien outward by foreign ocean commerce at the Port of Montevideo (all classes), by nationality, 1879-1921	577
IX. Intercontinental and continental immigration and emigration of workers, 1920-21	578
IXa. Distribution of immigrant and emigrant workers, by country of origin and destination, 1920-21	578
IXb. idem by sex and age, 1920-21	578
IXc. idem by occupation, 1920-21	579
IXd. idem by nationality, 1920-21	580

WEST COAST

CHILE

I. Immigration of aliens, 1850-1910	582
II. Distribution, by sex, age, nationality and occupation, of immigrants admitted in 1909	583
III. Passengers arrived and departed by sea, 1908-24	583
IV. Passengers arrived and departed by the Trans-Andes Railway, 1913-23	584

EUROPE

NORTHWESTERN AND CENTRAL

AUSTRIA

PRE-WAR AUSTRIA

(a) PERMIT STATISTICS

I. Emigration, by province, 1819-84	588
II. Distribution of authorized and unauthorized emigrants, by sex and age, 1830-54	589
III. Distribution of emigrants, by sex and age, 1850-84	590
IV. Immigration, by province, 1819-54	591
V. Distribution of immigrants, by sex and age, 1830-54	592

(b) PORT STATISTICS

VI. Intercontinental emigration of citizens, by port of embarkation, 1871-1913	593
VII. Intercontinental emigration (figures available from all ports of embarkation), by country of destination, 1871-1910	594

LIST OF NATIONAL TABLES

TABLE	PAGE
VIII. Distribution of emigrants via Hamburg and Bremen, by sex, 1890-1910	595
IX. Distribution of emigrants through the Ports of Hamburg and Bremen, by age, 1890-1910	595
X. Distribution of emigrants through the Ports of Hamburg and Bremen, by occupation, 1890-1910	596
(c) FRONTIER STATISTICS	
XI. Continental emigration (seasonal) totals according to the records of the frontier police, 1906-11	596
(d) PASSPORT STATISTICS	
XII. Emigrants and immigrants from Bosnia and Herzegovina (Emigrants, fugitives and returned emigrants), 1883-1905	596
XIII. Number of emigrants from Bosnia and Herzegovina to America according to passports issued, 1904-13	597
POST-WAR PASSPORT STATISTICS	
XIV. Distribution of emigrant citizens to extra-European countries, by sex and age, 1921-24	597
XV. Distribution of emigrant citizens to extra-European countries, by occupation, 1921-24	597
XVI. Intercontinental emigration of citizens by country of destination, 1921-24	598
XVII. Distribution of emigrants to extra-European countries, by occupation and country of destination, 1921-24	599
BELGIUM	
I. STATISTICS OF COMMUNAL REGISTERS	
I. Emigration and immigration, 1841-91	603
II. Distribution of emigrant citizens to extra European countries, by sex, age and occupation, 1884-1924	604
III. Intercontinental emigration of citizens, by country of destination, 1884-1924	605
IV. Distribution of emigrant citizens to European countries, by sex and occupation, 1884-1924	606
V. Continental emigration of citizens, by country of destination, 1884-1924	607
VI. Distribution of immigrant citizens from extra-European countries, by sex and occupation, 1884-1924	608
VII. Intercontinental immigration of citizens by country of origin, 1884-1924	609
VIII. Distribution of immigrant citizens from European countries, by sex and occupation, 1884-1924	610
IX. Continental immigration of citizens, by country of origin, 1884-1924	611
X. Continental and intercontinental immigration and emigration of aliens, 1884-1924	612

LIST OF NATIONAL TABLES

25

II. STATISTICS OF THE PORT OF ANTWERP

TABLE	PAGE
XI. Emigration, likewise immigration, through the Port of Antwerp, 1843-1924	613
XII. Direct and indirect emigration, via Antwerp, 1890-1924	614
XIII. Distribution of emigrant citizens to extra-European countries through the Port of Antwerp, by sex, age and country of destination, 1885-1924	615
XIV. Distribution of emigrant citizens to extra-European countries through the Port of Antwerp, by occupation, 1886-1924	616
XV. Distribution of emigrant aliens direct to extra-European countries through the Port of Antwerp, by nationality, and their total indirect inter-continental emigration through this port, 1886-1924	617

BRITISH ISLES

HISTORICAL TABLES

I. Intercontinental emigration from the Port of London, by sex, age and country of destination, 1635	625
II. Emigration, by sex, age, and country of destination, 1774-76	626
III. Scotland. Intercontinental emigration, by sex, age, and country of future residence, 1774-75	626

STATISTICS OF INTERCONTINENTAL PASSENGERS

IV. Passengers to extra-European countries, by country of destination, 1815-1924	627
IVa. Emigrants to British West Indies and the Cape of Good Hope, 1821-40	630
IVb. Emigration to the several Australian colonies, 1838-75	631
IVc. Emigration to British North America, by country of destination, 1842-75	632
V. Passengers outward, by sex and age, 1843-76	633
VI. Passenger citizens outward, by sex and age, 1877-1912	634
VII. Adult passenger citizens to extra-European countries, by occupation and sex, 1857, 1867, and 1877-1911	635
VIII. Passenger citizens outward to extra-European countries, by country of destination, 1853-1924	636
IX. Inward movement of passengers (including transmigrants) from extra-European countries, 1854-74	637
X. Inward movement of passenger citizens from extra-European countries, 1876-1924	638
XI. Passengers inward (citizens) from extra-European countries, by sex and age, 1877-1913	639
XII. Passengers inward from extra-European countries, citizens by country of departure and aliens (totals only), 1870-1924	640
XIII. Excess of outward over inward passengers (passengers of British nationality), 1870-1924	641

LIST OF NATIONAL TABLES

STATISTICS OF INTERCONTINENTAL MIGRANTS

TABLE	PAGE
XIV. Emigrant citizens to extra-European countries, 1912-24	641
XV. Emigrant citizens to extra-European countries, by sex and age, 1912-24	642
XVI. Emigrant citizens, 18 years of age and over, to extra-European countries, by occupation and sex, 1912, 1913 and 1921-24	643
XVII. Emigrant citizens to extra-European countries of future permanent residence, 1912-24	644
XVIII. Emigrants (British subjects), 18 years of age and over, to non-European countries, by occupation, sex and country of future permanent residence, 1921-24	645
XIX. Immigrant citizens from extra-European countries, 1912-24	647
XX. Immigrant citizens from extra-European countries, by sex and age, 1912-24	648
XXI. Immigrant citizens, 18 years of age and over, from extra-European countries, by occupation and sex, 1912, 1913 and 1921-24	649
XXII. Immigrant citizens from extra-European countries, by country of last permanent residence, 1912-24	650
XXIII. Immigrant citizens, 18 years of age and over, from extra-European countries, by occupation, sex and country of last permanent residence, 1924	651
XXIV. Immigration and emigration of aliens from and to extra-European countries, by sex and age, 1912-15	652
XXV. Immigration and emigration of aliens from and to extra-European countries, by country of last and future permanent residence, 1912-13	652
XXVI. Immigration and emigration of aliens from and to extra-European countries, by occupation and sex, 1912-13	653

PASSENGERS TO AND FROM THE CONTINENT OF EUROPE

XXVII. Passenger movement between the British Isles and European countries, 1890-1924	654
XXVIII. Aliens arrived from Europe (excluding transmigrants), by sex and age, 1891-1905	655
XXIX. Passenger movement between the British Isles and European countries, distinguishing British and aliens, 1906-13 and 1921-24	655
XXX. Aliens landed holding permits issued by the Ministry of Labour, classified by nationality, sex and age, 1921-24	656
XXXI. Intercontinental transmigrants and migrants in transit, 1921-1924	657

CZECHOSLOVAKIA

I. Intercontinental emigration of citizens, by country of future residence (port statistics), 1922-24	660
II. Distribution of emigrant citizens to extra-European countries, by sex and age (port statistics), 1924	660

LIST OF NATIONAL TABLES

27

TABLE	PAGE
III. Distribution of emigrant citizens to extra-European countries, by occupation (port statistics), 1924	660
IV. Emigration of citizens to all parts, by country of future residence (passport statistics), 1920-21	660
V. Distribution of emigrants to extra-European countries, by sex and age (passport statistics), 1924	661
VI. Distribution of emigrants to extra-European countries, by occupation (passport statistics), 1922-24	661
VII. Intercontinental emigration of citizens, by country of future residence (passport statistics), 1922-24	661
VIII. Distribution of emigrant citizens to European countries, by sex and age, 1924	662
IX. Distribution of emigrants to European countries, by occupation, 1922-24	662
X. Continental emigration of citizens, by country of future residence, distinguishing seasonal emigrants without passports from emigrants with individual passports, 1922-24	663
XI. Distribution of emigrants, by sex and age (passport statistics), 1922-24	664
XII. Immigration, by country of origin, 1922-24	664

DENMARK

I. Distribution of emigrants to non-European countries, by sex and age, 1869-1924	667
II. Distribution of male emigrants, 15 years of age and over, by occupation, 1872-1924	669
III. Emigration, by country of destination, 1869-1924	670

FRANCE

PORT STATISTICS

I. Distribution of emigrants from French ports, by nationality, 1837-39 and 1856-91	677
II. Emigration through the Port of Le Havre, 1837-91	678
III. Distribution of emigrant citizens, by sex and age, 1865-91	678
IV. Distribution of emigrant citizens, by age, 1878-91	679
V. Distribution of emigrant citizens, by occupation, 1878-91	679
VI. Intercontinental emigration of citizens, 1892-1924	680

PASSPORT STATISTICS

VII. Emigration of citizens to foreign countries and to Algeria, 1853-64	680
VIII. Distribution of emigrant citizens, by sex and age, 1857-77	681
IX. Distribution of emigrant citizens, by occupation, sex and age, 1857-77	682
X. Distribution of emigrant citizens to Algeria, by sex and age, 1857-64	682

LIST OF NATIONAL TABLES

TABLE	PAGE
XI. Distribution of emigrant citizens to Algeria, by occupation, sex and age, 1857-64	683
XII. Distribution of alien laborers who entered France, by nationality and occupation, 1920-24	683
XIII. Distribution, by nationality, of alien laborers who left France, 1920-24	684

GERMANY

1. PERMIT STATISTICS

I. Emigration from Germany (statistics of authorized and clandestine emigration supplied by the various States), 1836-70	691
--	-----

2. PORT STATISTICS

II. Emigration of citizens and aliens through German ports (Hamburg and Bremen), 1832-70	692
IIa. Emigration through Bremen (direct) and through Hamburg (direct and indirect), 1832-70	693
III. Emigration via Hamburg and Bremen, by country of destination, 1832-70	694
IIIa. Direct emigration through Hamburg, by country of destination, 1836-70	695
IV. Emigration of citizens through German and foreign ports, 1844-54	696
V. Distribution of emigrants via Hamburg, by sex and age, 1855-70	696
VI. Volume of intercontinental emigration of citizens, 1871-1924	697
VII. Distribution of emigrant citizens, by sex and age, 1871-1924	698
VIII. Emigration of citizens, by country of destination, 1871-1924	700
IX. Distribution of emigrant citizens, by occupation and sex, 1899-1924	702
X. Volume of alien intercontinental transit migration (outgoing movement), 1871-1924	703
XI. Alien emigration through German ports, by country of origin, 1871-1924	704
XII. Alien emigration through German ports, by country of destination, 1871-1924	706

3. IDENTIFICATION CARD STATISTICS

XIII. Continental migration of alien workers, 1910-24	708
---	-----

HUNGARY

STATISTICS OF PRE-WAR HUNGARY

(a) PERMIT STATISTICS OF IMMIGRANTS

I. Immigration (transit by Vienna), 1768-71	713
II. idem, 1784-86	714

LIST OF NATIONAL TABLES

29

TABLE	PAGE
III. Immigration (newly arrived families), 1784 (end half-year) to 1787 (three quarters)	714
IV. Occupations, 1785-86	715
(b) STATISTICS OF FOREIGN PORTS	
V. Intercontinental emigration of citizens, 1871-1913	716
VI. Intercontinental emigration of citizens, by country of destination: Hamburg statistics, 1871-84; Hamburg and Bremen statistics, 1892-1913	717
VII. Distribution of emigrant citizens to extra-European countries through the Port of Hamburg, by sex, 1871-84	718
(c) PASSPORT STATISTICS	
VIII. Emigration, by country of destination, 1899-1913	718
IX. Distribution of emigrants (heads of families and separate persons) to America, by occupation, 1905-07, 1911-13	718
X. Distribution of emigrants from Hungary proper to America, by sex, 1901-13	719
XI. Distribution of emigrants (heads of families and separate persons) from Hungary proper to America, by age (triennial totals only), 1905-07, 1911-13	719
XII. Distribution of emigrants from Hungary proper to Europe, by sex, 1904-13	719
XIII. Distribution of emigrants (heads of families and separate persons) to Germany, Rumania and other countries (excluding America), by age, 1905-13	720
XIV. Distribution of emigrants (heads of families and separate persons) from Hungary proper to Europe, by occupation, 1905-07, 1911-13	720
XV. Emigration and immigration of citizens, by constituent parts of the Kingdom, 1899-1913	720
XVI. Distribution of emigrant citizens, by constituent parts of the Kingdom and by sex, 1899-1913	721
XVII. Distribution of emigrant citizens (heads of families and separate per- sons), by constituent parts of the Kingdom and by age, 1905-13	722
XVIII. Distribution of emigrant citizens (heads of families and separate per- sons), by occupation, 1905-13	723
XIX. Distribution of emigrant citizens, by language, 1905-13	723
XX. Distribution of emigrant citizens, by language and country of desti- nation (quadrennial totals), 1910-13	724
XXI. Immigration of citizens, by country of last residence, 1901-13	725
XXII. Immigration of citizens from America, by constituent parts of the Kingdom, 1899-1913	725
XXIII. Distribution of immigrant citizens returned, by sex, 1905-13	725
XXIV. Distribution of immigrant citizens returned (heads of families and separate persons), by age, 1907-13	726

LIST OF NATIONAL TABLES

TABLE	PAGE
XXV. Distribution of immigrant citizens returned (heads of families and separate persons), by occupation, 1907-13	726
XXVI. Distribution of immigrant citizens, by language, 1905-13	726
XXVII. Immigration of aliens, by country of origin, 1907-15	726
XXVIII. Immigration of aliens, by language (race), 1907-15	727

STATISTICS OF POST-WAR HUNGARY
(Transport contracts)

XXIX. Distribution of emigrants to extra-European countries, by age, 1921-24	727
--	-----

IRISH FREE STATE (IRELAND)

I. Distribution of emigrants (native) to Great Britain, British Colonies and foreign countries, by sex, 1851-1921	730
II. Emigration of natives, by country of destination, 1876-1921	731
III. Distribution of emigrants (natives and others not distinguished), by age, 1856-1920	732
IV. Distribution of emigrants and immigrants of Saorstát nationality, by sex and age, 1923-24	734
V. Distribution of adult emigrants and immigrants (over 18 years of age) of Saorstát nationality, by occupation and sex, 1924	734
VI. Emigration and immigration (Saorstát nationality), by country of future or last residence, 1923-24	735
VII. Distribution of immigrant and emigrant aliens, by sex and age, during the nine months ended 31 December, 1924	735
VIII. Immigration and emigration of aliens, by country of last or future residence during the nine months ended 31 December, 1924	735

NETHERLANDS

I. Emigration of citizens through Dutch ports, 1831-81	740
II. Intercontinental emigration of citizens, by sex and age, 1831-56	740
III. Emigration through Dutch ports to United States ports, 1843-53	740
IV. Emigration through Dutch ports, distinguishing citizens and aliens, 1867-1924	741
V. Distribution of citizens emigrated through Dutch ports by sex, age and country of destination, 1882-1924	742
VI. Distribution of emigrant citizens, by sex and destination, 1865-1924 [743]	744
VII. Distribution of immigrants, by sex and country of origin, 1865-1924	744
VIII. Official registration and cancellation in the population registers, by sex, 1879-1905	745
IX. Continental emigration and immigration of laborers, 1811	746

NORWAY

I. Intercontinental emigration of citizens, 1821-65	747
II. Distribution of emigrant citizens to non-European countries, by sex and age, 1866-1924	748

LIST OF NATIONAL TABLES

31

TABLE	PAGE
III. Distribution of male emigrant citizens over 15 years of age to non-European countries, by occupation, 1871-1924	751
IV. Intercontinental emigration, by country of future residence, 1867-1924	[752]
V. Distribution of alien immigrants (including a small percentage of citizens), by sex and age, 1918-24	753
VI. Distribution of immigrants, by occupation and sex, 1918-24	753
VII. Immigration, by country of last residence, 1916-1924	754

SWEDEN

I. Emigration, by country of future residence, 1871-1924	756
II. Distribution of emigrants, by sex and age, 1851-1924	757
III. Distribution of emigrants, by occupation, 1891-1924	759
IV. Immigration, by country of last residence, 1876-1924	760
V. Distribution of immigrants, by sex and age, 1875-1924	761
VI. Distribution of immigrants, by occupation, 1891-1924	762

SWITZERLAND

I. Intercontinental emigration (citizens and aliens distinguished), 1868-1924	764
II. Distribution of emigrants to extra-European countries, by sex, 1887-1924	764
III. Distribution of emigrants to extra-European countries, by sex and age, 1887-1924	765
IV. Distribution of emigrants to extra-European countries, by occupation and sex, 1882-1924	767
V. Intercontinental emigration, by country of future residence, 1871-1924	769

NORTHEASTERN EUROPE

DANZIG

I. Intercontinental emigration of citizens, 1921-23	772
II. Alien migrants in transit to extra-European countries, 1920-24	772

ESTONIA

I. Number of persons who crossed the frontiers, 1920-24	773
II. Distribution of intercontinental and continental emigrant citizens, by sex and age, 1924	773
III. Distribution of intercontinental and continental emigrant citizens, by occupation, 1924	774
IV. Emigration, by country of destination, 1924	774
V. Distribution of intercontinental and continental emigrant citizens, by race or people, 1924	774

LIST OF NATIONAL TABLES

FINLAND		PAGE
TABLE		
I.	Distribution of emigrants to extra-European countries, by sex and age, 1882-1924	776
II.	Distribution of emigrants, by occupation, 1893-1924	777
III.	Intercontinental emigration, by country of destination and sex, 1882-1917	779
IV.	Distribution of immigrant citizens, by sex and age, 1894-1916, and totals, 1894-1924	780
V.	Distribution of immigrant citizens, by country of last residence and sex, 1894-1916	781
VI.	Departures and arrivals, according to the returns of the shipping companies, 1894-1924	781
VII.	Indirect statistics. Immigration into the United States by sex, 1872-1898	782
LATVIA		
I.	Arrivals and departures, by country of origin and destination, 1919-24	783
II.	Immigration from Russia, by groups of migrants, 1919-24	783
III.	Emigration to Russia, by groups of migrants, 1919-23	783
IV.	Arrivals from Russia en route to other countries, 1919-24	784
V.	Arrivals from various countries en route to Russia, 1919-24	784
LITHUANIA		
(No direct tables obtained.)		
POLAND		
CONGRESS POLAND		
I.	Permanent emigration from Congress Poland, 1890-1903	787
II.	Permanent emigration from Congress Poland, by country of destination, 1904 and 1908-13	787
III.	Distribution of permanent emigrants from Congress Poland, by sex, occupation and country of destination, 1909-13	788
IV.	Distribution of permanent emigrants from Congress Poland, by religion, 1909-13	788
V.	Temporary emigration from Congress Poland, by country of destination, 1890-1913	789
POLISH REPUBLIC		
VI.	Distribution of emigrants from the Polish Republic to extra-European countries, by occupation, 1922-23	789
VII.	Intercontinental emigration from the Polish Republic, by country of future residence, 1920-24	789
VIII.	Distribution of emigrants from the Polish Republic to European countries, by sex, age and occupation, 1924	790
IX.	Continental emigration from the Polish Republic, by country of future residence, 1920-24	790
X.	Intercontinental immigration of citizens into the Polish Republic, 1920-24	790

LIST OF NATIONAL TABLES

33

RUSSIA

TABLE	PAGE
I. Citizen and Alien Passengers with Passports Outward and Inward across the Frontier of Russia during the Imperial Period (1828-1915)	794
Ia. Citizen and Alien Passengers Movement. Balance Inward and Outward (1828-1915)	796
II. Citizen and Alien Passengers Outward and Inward across the frontier of Russia during the Imperial Period, with Short Dated Cards (1875-1915)	797
III. Distribution of Alien Passengers with Passports Outward and Inward across the Frontier of Russia during the Imperial Period, 1828-1915 (by nationality)	798
IV. Distribution of Alien Passengers Outward and Inward across the Frontier of Russia during the Imperial Period, with Short Dated cards by nationality (1875-1915)	804
V. Distribution of Citizen and Alien Passengers with Passports, outward and inward across the Frontier of Russia during the Imperial Period by sex (1884-1915)	805
VI. Citizen and Alien Passengers, with Short Dated Cards, Outward and Inward across the frontier of Russia, during the Imperial Period, by sex, (1884-1915).	806
VII. Intercontinental emigration, according to German port statistics, 1871-1924	807
VIII. Intercontinental emigration, by country of destination, according to German port statistics, 1871-1924	808
IX. Seasonal (8-month) emigrants to Germany, by sex, 1898-1913	810
X. Seasonal (8-month) immigrants from Germany, by sex, 1901-1913	810

SOUTHWESTERN EUROPE

ITALY

PORT STATISTICS

I. Emigration to America, 1856-73	817
-----------------------------------	-----

STATISTICS OF CARPI

II. Emigration of citizens, 1869-76	817
III. Distribution of citizen emigrants, by sex, 1871-76	817
IV. Distribution of citizen emigrants, by age, 1872-76	818
V. Distribution of citizen emigrants, by occupation, 1869-76	818
VI. Emigration of citizens, by country of destination, 1869-76	819

LIST OF NATIONAL TABLES

STATISTICS OF THE DIREZIONE GENERALE DELLA STATISTICA		PAGE
TABLE		
VII.	Emigration of citizens to non-European and Mediterranean countries, 1876-1920	820
VIII.	Distribution of citizen emigrants, by sex and age, 1876-1914	820
VIIIa.	Distribution of citizen emigrants, by sex and age, 1915-20	821
IX.	Distribution of citizen emigrants (permanent and temporary distinguished), by sex and age, 1876-1903	822
X.	Distribution of citizen emigrants over 14 years of age (permanent and temporary distinguished), by occupation, 1876-1903	823
Xa.	idem (cont.), 1904-15	826
Xb.	Distribution of citizen emigrants, 15 years of age and over, by occupation, 1916-20	827
XI.	Emigration of citizens, by country of destination, 1876-1920	828
XII.	Distribution of citizen emigrants, by occupation and country of destination, 1915-20	832
STATISTICS OF THE COMMISSARIATO GENERALE DELL' EMIGRAZIONE		
XIII.	Intercontinental emigration of citizens by country of destination, 1902-24	835
XIV.	Distribution of citizen emigrants to extra-European countries, by sex and age, 1921-24	835
XV.	Distribution of citizen emigrants over 15 years of age to extra-European countries, by occupation, 1921-24	835
XVI.	Distribution of citizen emigrants to European countries, by sex and age, 1921-24	836
XVII.	Distribution of citizen emigrants over 15 years of age to European countries, by occupation, 1921-24	836
XVIII.	Continental emigration of citizens, by country of destination (according to the schedules detached from the emigrants' passports), 1921-24	837
XIX.	Continental emigration of citizens, by country of destination (corrected table, in accordance with additional information), 1921-24	837
STATISTICS OF THE DIREZIONE GENERALE DELLA STATISTICA		
XX.	Intercontinental immigration distinguishing citizens and aliens and first and second class passengers, 1884-1920	838
XXI.	Intercontinental immigration (third class passengers), by country of last residence, 1884-1920	839
STATISTICS OF THE COMMISSARIATO GENERALE DELL' EMIGRAZIONE		
XXII.	Immigration of citizens, by country of last residence, 1921-24	840
XXIII.	Distribution of citizen immigrants from extra-European countries, by sex and age, 1921-24	840
XXIV.	Distribution of citizen immigrants from European countries, by sex and age, 1921-24	841
XXV.	Alien migrants in transit to and from extra-European countries, 1920-24	841

LIST OF NATIONAL TABLES

35

PORTUGAL

I. PASSPORT STATISTICS

TABLE		PAGE
I.	Distribution of citizen emigrants, by sex, age and country of future residence, 1855-1921	844
II.	Distribution of citizen emigrants, by sex and age, 1913-21	845
III.	Emigration of citizens to America, by country of future residence, 1913-21 and 1923-24	845

II. PORT STATISTICS

IV.	Emigration and immigration of citizens (third class passengers embarked and disembarked at Portuguese ports), 1919-24	845
V.	Distribution of citizen emigrants of all classes embarked at Oporto and Lisbon, by sex, destination and occupation, 1919-24	846
VI.	Distribution of citizen immigrants of all classes, disembarked at Lisbon and Oporto, by sex, country of embarkation and occupation, 1920-24	846

SPAIN

I.	Passengers outward and inward by sea, 1882-1923	849
II.	Passengers outward by sea, by country of destination, 1882-1923	850
III.	Passengers inward by sea, by country of origin, 1882-99, 1914-23	856
IV.	Distribution of emigrants to extra-European countries, by sex and age, 1909-24	859
V.	Distribution of emigrants to extra-European countries, by occupation, 1920-22	859
VI.	Intercontinental emigration, by country of destination, 1909-24	860
VII.	Distribution of immigrants from extra-European countries, by sex and age, 1916-24	861
VIII.	Distribution of immigrants from extra-European countries, by occupation, 1920-22	861
IX.	Intercontinental immigration, by country of origin, 1916-24	861

SOUTHEASTERN EUROPE

BULGARIA

I.	Permanent emigration, by families and by persons classified by sex and age, 1893-1902	864
II.	Distribution of permanent emigrants, by sex and occupation, 1893-1902	865
III.	Distribution of permanent emigrants, by sex, religion and country of destination, 1893-1902	866

LIST OF NATIONAL TABLES

TABLE	GREECE	PAGE
I.	Intercontinental emigration of citizens, 1913, 1920-21	869
II.	Distribution of emigrants, by sex, nationality and country of destination, 1923	869
MALTA AND GOZO		
I.	Distribution of Maltese emigrants, by sex, age, occupation and country of destination, 1911/12-1924/5	871
II.	Distribution of Maltese immigrants, by sex, age, occupation and country of last residence, 1920/21-1924/5	873
RUMANIA		
I.	Intercontinental emigration and immigration of citizens, 1920-24	875
II.	Intercontinental emigration and immigration of citizens, by country of future or last residence, 1922-24	875
III.	Continental immigration and emigration of aliens, 1920-24	876
IV.	Continental immigration and emigration of aliens, by country of last or future residence, 1922-24	876
V.	Distribution of emigrants, by occupation, 1923-24	877
VI.	Distribution of immigrants, by occupation, 1923-24	877
SERB, CROAT AND SLOVENE STATE		
A		
PRE-WAR SERBIA		
I.	Passengers inward and outward, by country of origin or destination, 1860-75	879
II.	Citizen passengers outward and inward across the frontier, 1889-1908	880
III.	Alien passengers inward and outward across the frontier, by nationality, 1889-1908	880
SERB, CROAT AND SLOVENE STATE		
IV.	Distribution of citizen emigrants to extra-European countries, by sex and age, 1919-24	882
V.	Distribution of citizen emigrants to extra-European countries, by occupation and sex, 1921-24	882
VI.	Distribution of citizen emigrants to extra-European countries by race or people, 1921-24	883
VII.	Intercontinental emigration of citizens, by country of destination, 1919-24	883
VIII.	Intercontinental immigration of citizens, 1919-24	884
IX.	Distribution of alien emigrants, by sex and age, 1924	884
X.	Distribution of alien emigrants to extra-European countries, by occupation and sex, 1924	884
XI.	Emigration of aliens, by country of destination, 1923-24	885
XII.	Immigration of aliens, by country of last residence, 1923-24	885

LIST OF NATIONAL TABLES

37

B

TABLE	PAGE
XIII. Immigration from Yugoslavia into extra-European countries, by destination, 1899-1924	886
XIV. Emigration to Yugoslavia from the United States, 1908-24	887

TURKEY

I. Immigration from Turkey into extra-European countries, by destination, 1820-1924	889
II. Emigration to Turkey from extra-European countries, 1891-1924	892

ASIA

WESTERN

PALESTINE

(British Mandate)

I. Distribution of immigrants, by sex, age and religion, 1922-24	894
II. Distribution of immigrants, by religion, sex and occupation, 1922-24	895
III. Distribution of Jewish wage-earners who entered Palestine, by occupation, 1924	896
IV. Distribution of immigrants, by religion and country of origin, 1922-24	897
V. Distribution of citizen and alien emigrants, by religion, 1922-24	899

SYRIA

(No direct Tables)	899
------------------------------	-----

SOUTHERN AND SOUTHEASTERN

BRITISH INDIA

I. Distribution of citizen emigrants to extra-Asiatic countries, by sex and age, 1842-70	902
II. Distribution of citizen emigrants, by sex, 1870-1923	902
III. Distribution of citizen emigrants, by sex and age, 1923 and 1924	903
IV. Distribution of citizen emigrants, by country of future residence, 1842-1924/5	904

LIST OF NATIONAL TABLES

TABLE	PAGE
V. Distribution of citizen emigrants, by country of future residence, distinguishing also skilled and unskilled, 1923 and 1924	906
VI. Distribution of citizen immigrants, by sex, 1878/9-1921/2	906
VII. Distribution of immigrant citizens, by country of last residence, 1923 and 1924	907

BRITISH MALAYA

FEDERATED MALAY STATES

(a) *Negeri Sembilan*

I. Distribution of immigrants and emigrants, by nationality, 1900	909
---	-----

(b) *Perak*

II. Distribution of immigrants and emigrants, by nationality and sex, 1900	909
--	-----

(c) *Selangor*

III. Distribution of Chinese immigrants and emigrants, by sex, 1891-1900	909
--	-----

FEDERATED MALAY STATES, OTHER MALAY STATES AND STRAITS SETTLEMENTS

IV. Arrivals at Penang from Madras and Negapatam, by destination, 1923-24	910
V. Arrivals at Penang of Indians from Madras and Negapatam, by sex and age, 1923-24	911
VI. Departures from Penang for Southern India, by age, 1923-24	911

STRAITS SETTLEMENTS

I. Immigration and emigration of aliens, 1900-24	913
II. Chinese immigrants and emigrants to and from Singapore and Penang, 1881-1915	913
III. Chinese immigrants to Malacca, 1891-1912	914

CEYLON

I. Immigration from and emigration to India, 1878-1900	915
II. Immigration from and emigration to India, 1911-24	915
III. Immigration from and emigration to India (Indian coolies only), 1900-24	915

LIST OF NATIONAL TABLES

39

DUTCH EAST INDIES

TABLE		PAGE
I.	Distribution of immigrants, by nationality, 1923	917
II.	Number of permits for admittance, 1915-24	917
III.	Emigration and immigration of coolies, by country of future or last residence, 1923-24	918

FRENCH INDO-CHINA

(Cochin China)

I.	Distribution of European immigrants and repatriated persons, by nationality, 1879-83	919
II.	Chinese immigration and emigration, 1879-83	920

KARIKAL

I.	Distribution of English and French passengers embarked and disembarked, by sex and nationality, 1913-24	921
----	---	-----

PONDICHERRY

I.	Distribution of passengers disembarked from the packet-boats of the Messageries Maritimes Shipping Company, by nationality, 1916-24	922
II.	Distribution of passengers embarked on the packet-boats of the Messageries Maritimes Shipping Company, by nationality, 1916-24	922

PHILIPPINE ISLANDS

I.	Distribution of immigrant aliens, by sex and age, 1910-24	923
II.	Distribution of immigrant aliens, by occupation, 1910-24	923
III.	Distribution of emigrant aliens, by sex and age, 1910-24	924
IV.	Distribution of emigrant aliens, by occupation, 1910-24	924

SIAM

I.	Arrivals and departures, Port of Bangkok and southern frontier, 1918/19-1923/24	925
II.	Arrivals and departures at the Port of Bangkok, by sex, 1922/23-1923/24	925
III.	Arrivals and departures at the Port of Bangkok, by nationality, 1922/23-1923/24	925
IV.	Arrivals and departures across the southern frontier, 1922/23-1923/24	925

EASTERN ASIA

CHINA

I.	Emigration of indentured laborers (citizens), by ports of embarkation, 1845-73	927
----	--	-----

LIST OF NATIONAL TABLES

TABLE	PAGE
II. Distribution of intercontinental emigrants from Hongkong, by sex and country of destination, 1859-61	928
III. Emigration and immigration through Hongkong, 1900-24	928
IV. Intercontinental emigration through Macao, by country of destination, 1856-73	928
V. Passengers inward to and outward from Amoy, 1876-1901	929
VI. Chinese passengers outward from Amoy, 1902-17.	929
VII. Passengers (Chinese) inward to and outward from Kiungchow, 1876-1901	930
VIII. Passengers (Chinese) inward to and outward from Swatow, 1876-1901	931

JAPAN

I. Distribution of passenger citizens outward, by country of destination, 1868-1924	934
II. Distribution of passenger citizens outward, by occupation, 1884-1924	937
III. Distribution of emigrant citizens, by country of future residence, 1898-1924	938
IV. Distribution of emigrant citizens, by sex and by the principal countries of future residence, 1898-1924	939
V. Immigrant citizens (third class passengers) from certain countries, by country of last residence, 1908-24	940
VI. Immigration and emigration of Japanese into and from Formosa, 1898-1908	940
VII. Emigration of citizens from Korea, 1911-24	940

OCEANIA

AUSTRALIA

Commonwealth

I. Net immigration (excess of arrivals over departures) of the Commonwealth, by sex and States, 1860-1919	947
II. Arrivals from and departures to the United Kingdom and all parts, 1904-17	950
III. Distribution of arrivals, by country of last residence, 1918-24	950
IV. Distribution of arrivals, by sex and age, 1904-24	951
V. Distribution of arrivals, by nationality, 1902-24	952
VI. Distribution of departures, by country of future residence, 1918-24	955
VII. Distribution of departures, by sex and age, 1904-24	956
VIII. Departures of persons of non-European race, 1920-24	956
IX. Assisted immigrants arriving in each State, 1913-24	957
X. Distribution of assisted immigrants, by sex and age, 1907-24	957
XI. Distribution of assisted immigrants, by occupation, 1913-24	958

LIST OF NATIONAL TABLES

41

NEW SOUTH WALES

TABLE	PAGE
I. Arrivals by sea, classified by sex and age, 1825-28 and 1829-97	960
II. Arrivals by sea, classified by sex, 1898-1920	961
III. Arrivals by sea, classified by country of origin, 1900-23	962
IV. Departures by sea, classified by sex, 1843-1920	963
V. Departures by sea, classified by sex and age, 1843, 1869-97	964
VI. Departures by sea, classified by country of destination, 1900-23	965
VII. Chinese immigration and emigration, 1859-1919	966
VIII. Immigrants at the public expense and assisted immigrants, by sex and age, 1832-99	967
IX. Assisted immigrants, by sex, 1906-23	968

QUEENSLAND

I. Distribution of immigrants from extra-Australasian countries, by sex and age, 1860-63	970
II. Distribution of immigrants from Europe, by sex, age and nationality, from the Census of 1864 to May 17, 1871	970
III. Arrivals and departures by sea, 1860-1900	971
IV. Distribution of arrivals, by sex and age, 1862-1907	972
V. Distribution of arrivals, by sex, 1908-23	972
VI. Arrivals, by country of last residence, 1870-1924	973
VII. Distribution of departures, by sex, 1908-23	975
VIII. Distribution of departures, by sex and age, 1862-1907	975
IX. Departures, by country of destination, 1870-1924	976

SOUTH AUSTRALIA

I. Arrivals and departures by sea, 1836-1900	979
II. Distribution of arrivals, by sex and age, 1851-1924	980
III. Distribution of arrivals, by sex, age and country of last residence, 1851-1924	981
IV. Distribution of departures, by sex and age, 1851-1920	983
V. Distribution of departures, by sex, age and country of future residence, 1851-1924	985
VI. Immigrants at public expense and assisted immigrants, by sex, 1851-1885 and 1911-1915	987

TASMANIA

I. Arrivals and departures by sea, 1833, 1847-1919	988
II. Arrivals and departures by sea, classified by sex, 1909-1919	989

VICTORIA

I. Arrivals by sea, classified by sex, 1837-1924	990
II. Arrivals by sea, classified by country of last residence, 1865-1916	991
III. Arrivals and departures, classified by age, 1844-50, 1873-96	992

LIST OF NATIONAL TABLES

TABLE	PAGE
IV. Departures by sea, classified by sex, 1841-1924	993
V. Departures by sea, classified by country of future residence, 1865-1916	994
VI. Colored immigration and emigration, 1861, 1866, 1873-75, 1886-1923	995
VII. Assisted immigrants, by sex, 1838-60	996
VIII. Assisted immigrants, 1861-85	996

WESTERN AUSTRALIA

I. Arrivals and departures by sea, 1829-1924	998
--	-----

NEW ZEALAND

I. Distribution of immigrants, by sex and age, 1853-1924	1000
II. Distribution of immigrants, by sex and country of origin, 1853-1924	1002
III. Immigration, distinguishing assisted immigration and Chinese, from the United Kingdom, Australian Commonwealth and other places, 1870-1924	1004
IV. Distribution of emigrants, by sex and age, 1853-1924	1005
V. Distribution of emigrants, by sex and country of destination, 1853-1919	1007
VI. Emigration, by country of destination, distinguishing Chinese, 1870-1919	1009
VII. New arrivals of settlers, by sex and age, 1921-24	1010
VIII. New arrivals of settlers, by occupation, 1921-24	1010
IX. New arrivals of settlers, by sex and country of last residence, 1921-24	1011
X. Permanent departures of New Zealand residents, by sex and age, 1921-24	1012
XI. Permanent departures of residents, by occupation, 1921-24	1012
XII. Permanent departures of residents, by sex and country of future residence, 1921-24	1013
XIII. Arrivals and departures of persons of extra-European race, by race, 1912-24	1014

FIJI

I. Distribution of Polynesian and Indian laborers introduced into Fiji, by sex or nationality, 1879-1900	1015
II. Distribution of Polynesian and Indian laborers sent away from Fiji, by sex or nationality, 1879-1900	1015
III. Immigration and emigration, 1920-24	1016

NEW CALEDONIA

I. European immigration, by nationality and repatriation, 1879-83	1017
II. Distribution of immigrants, by sex, age, race and nationality, 1897-1924	1018

LIST OF NATIONAL TABLES

43

TABLE	PAGE
III. Distribution of emigrants, by sex, age, race and nationality, 1897-1924	1019
IV. Distribution of immigrants, by occupation, 1897-1924	1020
V. Distribution of emigrants, by occupation, 1897-1924	1021

HAWAII

I. Distribution of immigrants, by sex, age and nationality (fiscal years ended June 30), 1907-24	1022
II. Distribution of emigrants by sex, age and nationality (fiscal years ended June 30), 1911-24	1023

NAURU

(Australian Mandate)

I. Distribution of immigrants, by race or nationality, 1922-24	1024
II. Distribution of emigrants, by race or nationality, 1922-24	1024

NEW GUINEA

(Australian Mandate)

I. Distribution of emigrants, by sex, nationality and country of future residence, 1923-24	1025
II. Distribution of immigrants, by sex, nationality and country of last residence, 1923-24	1026

WESTERN SAMOA

(New Zealand Mandate)

I. Distribution of immigrants, by race or people, 1920-24	1027
II. Distribution of emigrants, by race or people, 1920-24	1027

AFRICA

MEDITERRANEAN

ALGERIA

I. Passengers inward by sea, by country, 1893-1924	1028
II. Passengers outward by sea, by country, 1893-1924	1029
III. Natives embarked for and returned from France, 1923 and 1924	1029

TUNIS

I. Distribution of immigrant aliens, by nationality, 1903-24	1031
II. Distribution of emigrant aliens, by nationality, 1903-24	1032

LIST OF NATIONAL TABLES

EGYPT		PAGE
TABLE		
I.	Arrivals, 1873-77	1033
II.	Departures, 1873-77	1033

MOROCCO

I.	Distribution of alien immigrants through Casablanca, by nationality, 1916-24	1035
II.	Distribution of emigrants through Casablanca, by nationality, 1916-24	1036
III.	Distribution of alien emigrants, by nationality, 1920-24	1037

OTHER AFRICA

BASUTOLAND

I.	Emigration of natives, 1907-24	1038
II.	Distribution of emigrant natives with labor passes, by country of destination and occupation, 1907-08 and 1908-09	1038

KENYA

East Africa Protectorate

I.	Passengers inward and outward, by race, 1908/09-1913/14	1039
----	---	------

Colony and Protectorate of Kenya

II.	Distribution of immigrants, by sex and race, 1920-24	1039
-----	--	------

Kenya, Uganda and Tanganyika Territory combined

III.	Distribution of immigrants and emigrants, by race, 1923-24	1039
------	--	------

MAURITIUS

I.	Immigrants into Mauritius, by country of origin, 1834-75	1040
II.	Distribution of Indian immigrants arrived and departed, by sex, 1834-1920	1041
III.	Total and Indian indentured immigration and total emigration, by country, 1900-24	1043
IV.	Distribution of Indian immigrants, by sex and age, 1860-1920	1044
V.	Distribution of Indian emigrants, by sex and age, 1860-1909	1045
VI.	Distribution of immigrants and emigrants, by sex and race, 1923-24	1046

NYASALAND

I.	Distribution of emigrants and immigrants (natives and aliens), by races, 1912/13-1924	1048
II.	Aliens in transit, outward and inward, 1923-1924	1048

LIST OF NATIONAL TABLES

45

TABLE	SAINT HELENA	PAGE
I.	Immigration and emigration, 1900-24	1049
SEYCHELLES		
I.	Arrivals and departures, 1900-1924	1050
SOMALILAND		
I.	Distribution of emigrants and immigrants, by race, 1908-12	1050
SOUTH AFRICA		
<i>Natal</i>		
I.	Immigration (European and coolie) and emigration, 1880-1900	1052
II.	Arrivals from and departures to the United Kingdom and all countries, 1900-12	1053
<i>Cape of Good Hope</i>		
III.	Arrivals from and departures to the United Kingdom and all countries, 1900-12	1053
<i>Orange Free State and Transvaal</i>		
IV.	Immigration into Orange Free State and the Transvaal, 1903-07	1054
<i>Union of South Africa</i>		
V.	Arrivals and departures and new arrivals, 1910-22	1054
VI.	Distribution of new arrivals, by sex and age, 1913-24	1054
VII.	Distribution of new arrivals, by occupation and sex; (a) by sea, 1913-17; (b) by land and by sea, 1918-23	1055
VIII.	Distribution of new arrivals, by nationality, 1913-23	1057
IX.	Distribution of new arrivals, by race, 1913-23	1058
X.	Distribution of new arrivals, by occupation and country of last residence, 1918-23	1059
XI.	Distribution of permanent departures by sea, by sex, 1918-24	1061
XII.	Distribution of permanent departures, by occupation and sex, 1918-22	1061
XIII.	Distribution of permanent departures, by occupation and country of future residence, 1918-22	1062
XIV.	Distribution of immigrants by sea and land intending permanent residence, by sex and race, 1924	1064

LIST OF NATIONAL TABLES

TABLE	PAGE
XV. Distribution of emigrants by sea and by land relinquishing domicile, by sex and race, 1924	1064
XVI. Distribution of Europeans assuming and relinquishing domicile, by sex and age, 1924	1064
XVII. Distribution of Europeans assuming and relinquishing domicile, by occupations, 1924	1065
XVIII. Distribution of European immigrants and emigrants, by nationality, 1924	1065
XIX. Distribution of extra-Europeans assuming and relinquishing domicile, by sex and age, 1924	1066
XX. Distribution of non-Europeans assuming and relinquishing domicile, by birthplace, 1924	1066

SOUTHERN RHODESIA

I. Distribution of immigrants, by nationality or race, 1915-1924	1067
II. Distribution of immigrants, by sex, age and nationalities, 1922 and 1924	1068
III. Distribution of immigrants, by occupation and sex, 1922 and 1924	1069

SWAZILAND

I. Emigration of natives, 1907/08-1924	1070
--	------

TANGANYIKA

(British Mandate)

I. Distribution of immigrants, by races, 1920-24	1070
--	------

MADAGASCAR

I. Distribution of immigrants, by sex, age and nationality, 1921-24	1071
II. Distribution of immigrants, by occupation, 1921-24	1071
III. Distribution of emigrants, by sex, age and nationality, 1921-24	1072
IV. Distribution of emigrants, by occupation, 1921-24	1073

FRENCH SOMALI COAST

I. Emigration of citizens (laborers), 1920-24	1074
II. Distribution of immigrants disembarked at the Port of Jibuti with intention to settle, by nationality, 1920-24	1074
III. Distribution of departures from Jibuti, by nationality, 1920-24	1074

LIST OF NATIONAL TABLES

47

TABLE	ANGOLA	PAGE
I.	Distribution of arrivals (aliens), by nationality and sex, 1923 and 1924	1075
II.	Distribution of departures (aliens), by nationality and sex, 1923 and 1924	1076
AZORES		
I.	Distribution of emigrants (citizens), by sex and age and according to passports issued, 1913-21 and 1923-24	1077
II.	Emigration of citizens, by country of future residence according to passports issued 1913-21 and 1923-24	1077
III.	Distribution of third class emigrant and immigrant citizens, by sex, 1924	1077
IV.	Distribution of passengers of all classes (citizens) embarked and disembarked in the ports of Horta, Ponta Delgada, Heroismo, by sex and destination or place of embarkation, 1924	1078
CAPE VERDE ISLANDS		
I.	Distribution of emigrants, by sex and country of destination (excluding indentured laborers), 1912-20	1079
II.	Distribution of emigrants, by sex, age and country of destination (including indentured laborers), 1912-19	1079
III.	Distribution of emigrants by sex, age, and future residence, 1923-24	1080
MADEIRA		
I.	Distribution of emigrant citizens, by sex and age, according to passports issued, 1913-21 and 1923-24	1081
II.	Emigration of citizens, by countries of destination, according to passports issued, 1913-21 and 1923-24	1081
III.	Distribution of third class emigrant and immigrant citizens, by sex, 1924	1081
IV.	Distribution of passengers of all classes (citizens) embarked and disembarked in the Port of Funchal, by sex, place of destination or embarkation and occupation, 1924	1082
CAMEROON (French Mandate)		
I.	Continental migration of natives and intercontinental migration of Europeans, 1923	1083
TOGO (French Mandate)		
I.	Continental emigration of natives, 1923-24	1083



LIST OF DIAGRAMS

DIAGRAM	PAGE
1 Intercontinental immigration of aliens into America and into the United States alone from 1821 to 1924, in quinquennial averages.....	169
2 Quinquennial averages of intercontinental immigration of aliens to Argentina, Brazil, Canada, Cuba, United States and Victoria (Australia) from 1821 to 1924 as far as figures are available.....	171
3 Intercontinental immigration of aliens into Argentina, Brazil, Canada and the United States, as percentage of the total immigration into these countries from 1856 to 1924 in quinquennial averages.....	173
4 Distribution of alien immigrants (United States), by regions of last residence (Eastern and Southern Europe, Western and Northern Europe, British North America, Mexico, other countries), from 1821 to 1924.	176
5 Total intercontinental emigration of citizens from European countries from 1846 to 1924 and total intercontinental immigration of citizens into European countries (repatriation) from 1886 to 1924, in quinquennial averages.....	183
6 Intercontinental emigration of citizens from European countries with over 50,000 emigrants per annum from 1846 to 1924 as far as direct or indirect statistics are available, in quinquennial averages.....	184
7 Intercontinental emigration of citizens from European countries with under 50,000 emigrants per annum from 1846 to 1924 as far as direct or indirect statistics are available, in quinquennial averages.....	186
8 Intercontinental emigration of citizens, percentage distribution of the average annual emigration from Europe over the various countries of emigration from 1846 to 1924, in quinquennial periods.....	188
9 Distribution of European emigrant citizens, by countries of future residence, from 1891 to 1924.....	190
10 Comparative table of emigration and immigration statistics concerning migration between certain countries of Europe and the United States. . .	[194]
11 Intercontinental emigration and immigration of citizens of various European countries as far figures for both movements are available in quinquennial averages.....	199
12 Intercontinental immigration and emigration of aliens (United States, Australia and Argentina), in quinquennial averages.....	203
13 Distribution of alien immigrants (United States), by sex, from 1831 to 1924, in quinquennial averages.....	208
14 Immigrants in three age categories as percentage of all alien immigrants to the United States from 1868 to 1924, in quinquennial averages.....	213
15 Distribution of alien immigrants (United States), by occupations, from 1821 to 1924.....	216
16 Distribution of alien immigrants (United States), by occupations, from 1899 to 1924.....	219

