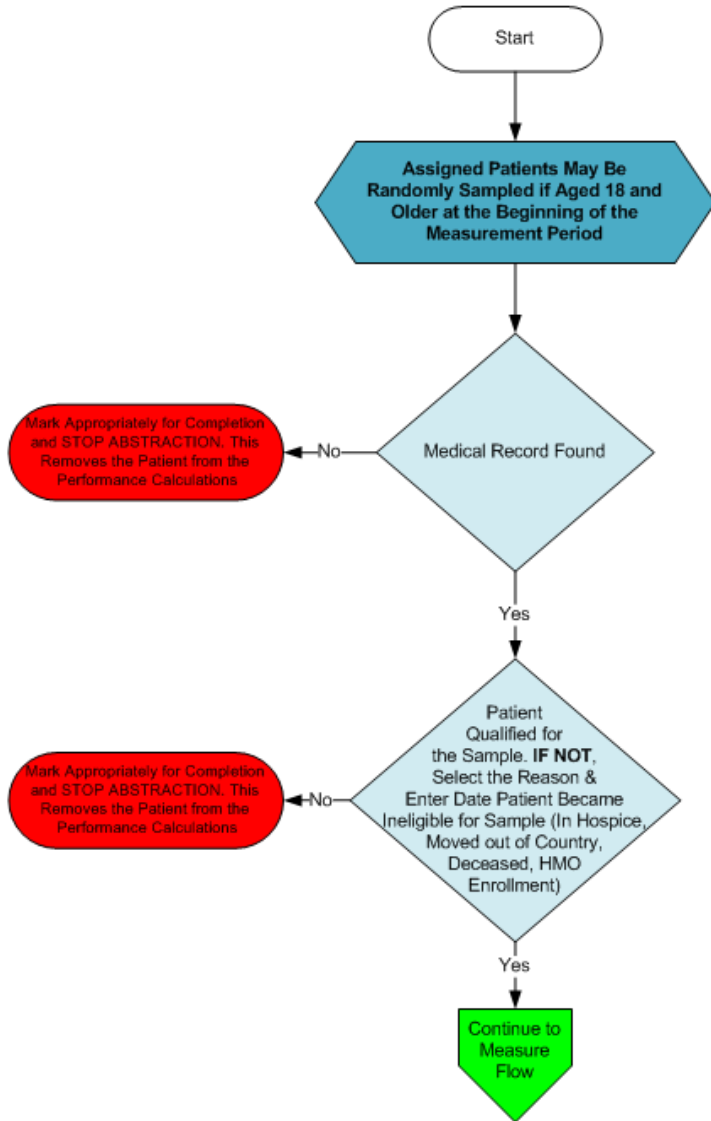


Patient Confirmation Flow for IVD

For 2013, confirmation of the "Medical Record Found", or indicating the patient is "Not Qualified for Sample" with a reason of "In Hospice", "Moved out of Country", "Deceased", or "HMO Enrollment", will only need to be done **once** per patient. For module or measure specific reasons a patient is "Not Confirmed" or excluded for "Other CMS Approved Reason", please refer to the associated Data Guidance.

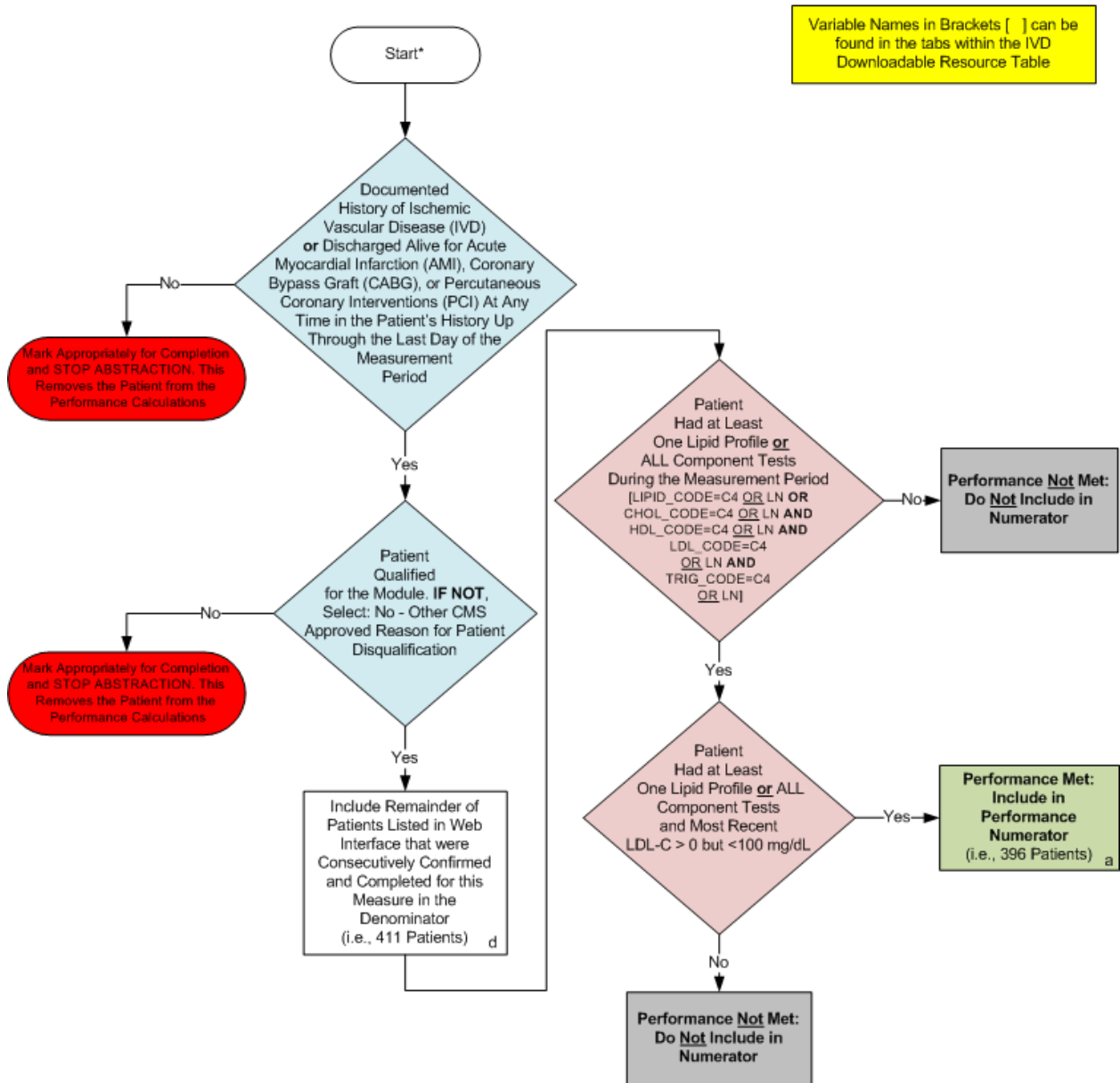


Patient Confirmation Flow for IVD

For 2013, confirmation of the “Medical Record Found”, or indicating the patient is “Not Qualified for Sample” with a reason of “In Hospice”, “Moved out of Country”, “Deceased”, or “HMO Enrollment”, will only need to be done **once** per patient. For module or measure specific reasons a patient is “Not Confirmed” or excluded for “Other CMS Approved Reason”, please refer to the associated Data Guidance.

1. Start IVD Patient Confirmation Flow. Assigned patients may be randomly sampled if aged 18 and older at the beginning of the measurement period.
2. Check to determine if Medical Record can be found
 - a. If no, Medical Record not found, mark appropriately for completion and stop abstraction. This removes the patient from the performance calculations. Stop processing.
 - b. If yes, Medical Record found, continue processing.
3. Check to determine if Patient Qualified for the sample
 - a. If no, the patient does not qualify for the sample, select the reason why and enter the date the patient became ineligible for sample. For example; In Hospice, Moved out of Country, Deceased, HMO Enrollment. Mark appropriately for completion and stop abstraction. This removes the patient from the performance calculations. Stop processing.
 - b. If yes, the patient does qualify for the sample, continue to the 2013 GPRO-IVD measure flows.

2013 GPRO IVD-1 (NQF 0241): Performance Calculation Rate for Ischemic Vascular Disease (IVD): Complete Lipid Profile and Low Density Lipoprotein (LDL-C) Control
 This flow applies to PQRS GPRO Web Interface and ACO GPRO Web Interface



SAMPLE CALCULATION:

Performance Rate=

$$\frac{\text{Performance Met (a=396 Patients)}}{\text{Eligible Denominator (d=411 Patients)}} = \frac{396 \text{ Patients}}{411 \text{ Patients}} = 96.35\%$$

CALCULATION MAY CHANGE PENDING PERFORMANCES MET ABOVE

*See Data Guidance for further instructions to report this measure v1.2

2013 GPRO IVD-1 (NQF 0241): Performance Calculation Rate for Ischemic Vascular Disease (IVD): Complete Lipid Profile and Low Density Lipoprotein (LDL-C) Control

This flow applies to PQRS GPRO Web Interface and ACO GPRO Web Interface

Variable names can be found in the tabs within the IVD Downloadable Resource Table.
See Data Guidance for further instructions to report this measure.

1. Start processing 2013 GPRO IVD-1 (NQF 0241) Flow for the patients that qualified for sample in the IVD Patient Confirmation Flow.
2. Check to determine if the patient has a documented history of Ischemic Vascular Disease (IVD) or Discharged alive for Acute Myocardial Infarction (AMI), Coronary Bypass Graft (CABG), or Percutaneous Coronary Interventions (PCI) at any time in the patient's history up through the last day of the measurement period.
 - a. If no, the patient does not have a documented history of Ischemic Vascular Disease (IVD) or Discharged alive for Acute Myocardial Infarction (AMI), Coronary Bypass Graft (CABG), or Percutaneous Coronary Interventions (PCI) at any time in the patient's history up through the last day of the measurement period, mark appropriately for completion and stop abstraction. This removes the patient from the performance calculations. Stop processing.
 - b. If yes, the patient does have a documented history of Ischemic Vascular Disease (IVD) or Discharged alive for Acute Myocardial Infarction (AMI), Coronary Bypass Graft (CABG), or Percutaneous Coronary Interventions (PCI) at any time in the patient's history up through the last day of the measurement period, continue processing.
3. Check to determine if the patient qualified for the module
 - a. If no, the patient did not qualify for the module select: No – Other CMS Approved Reason for patient disqualification. Mark appropriately for completion and stop abstraction. This removes the patient from the performance calculations. Stop processing.
 - b. If yes, the patient does qualify for the module, the patient will be included in the eligible denominator for performance rate calculations. Note: Include remainder of patients listed in the Web Interface that were consecutively confirmed and completed for this measure in the denominator. For the sample performance rate calculation in the flow these patients would fall into the 'd' category (eligible denominator, i.e. 411 patients). Continue processing.
4. Check to determine if the patient had at least one lipid profile **or** all component tests during the measurement period. Variable Names: LIPID_CODE=C4 OR LN **OR** CHOL_CODE=C4 OR LN **AND** HDL_CODE=C4 OR LN **AND** LDL_CODE=C4 OR LN **AND** TRIG_CODE=C4 OR LN.
 - a. If no, the patient did not have at least one lipid profile **or** all component tests during the measurement period, performance is not met and should not be included in the numerator. Stop processing.
 - b. If yes, the patient did have at least one lipid profile **or** all component tests during the measurement period, continue processing.
5. Check to determine if the patient had at least one lipid profile **or** all component tests during the measurement period **and** the most recent LDL-C is greater than zero but less than 100 mg/dL.

- a. If no, the patient did not have at least one lipid profile **or** all component tests during the measurement period **and** most recent LDL-C greater than zero, but less than 100 mg/dL, performance is not met and should not be included in the numerator. Stop processing.
- b. If yes, the patient had at least one lipid profile **or** all component tests during the measurement period **and** the most recent LDL-C is greater than zero, but less than 100 mg/dL, performance is met and the patient will be included in the Numerator. For the sample performance rate calculation in the flow these patients would fall into the 'a' category (numerator, i.e. 396 patients). Stop processing.

Sample Calculation

Performance Rate Equals

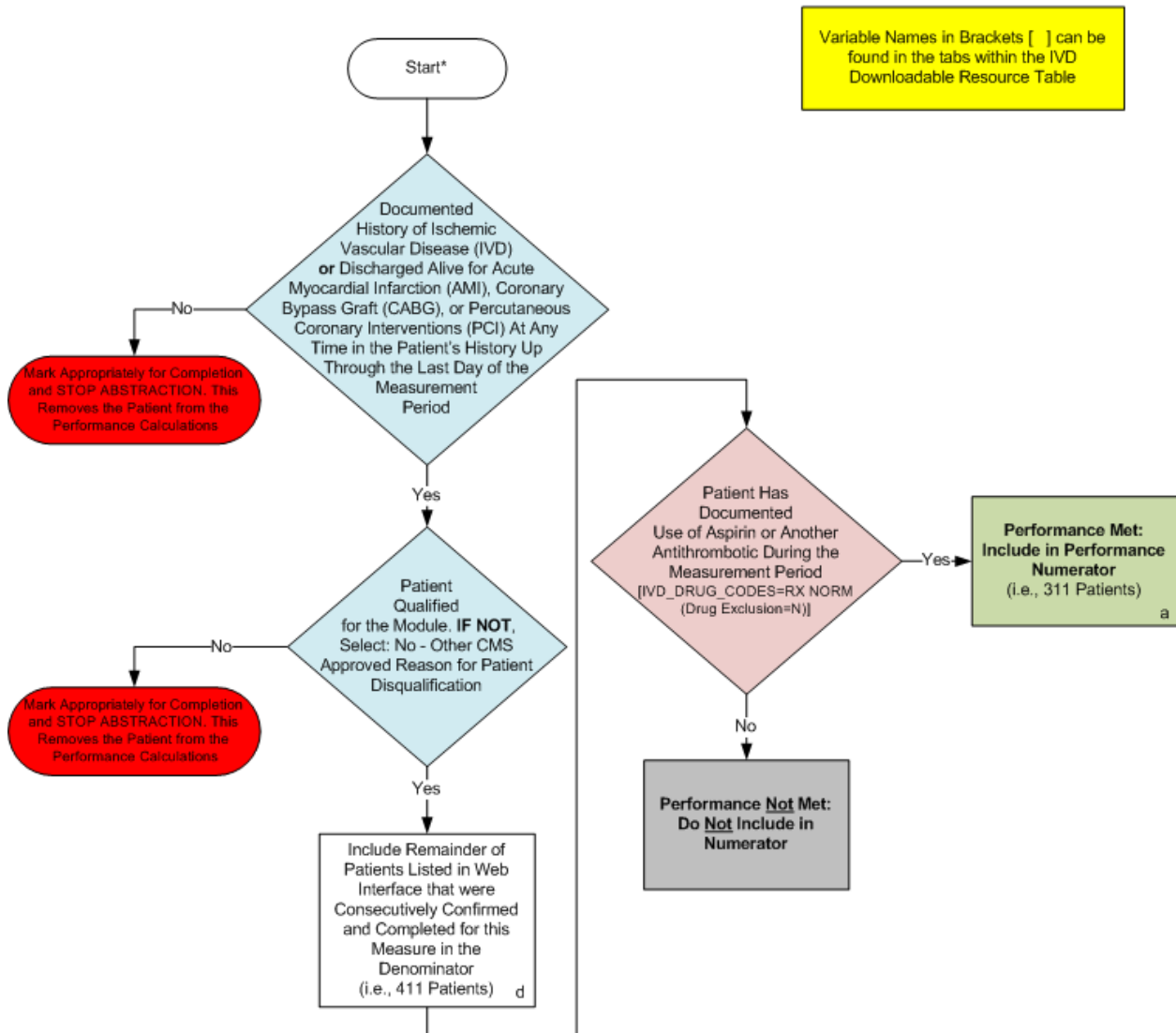
Performance Met is category 'a' in the measure flow (396 patients)

Eligible Denominator is category 'd' in measure flow (411 patients)

396 (Performance Met) divided by 411 (Eligible Denominator) equals a performance rate of 96.35 percent

Calculation May Change Pending Performance Met

2013 GPRO IVD-2 (NQF 0068): Ischemic Vascular Disease (IVD): Use of Aspirin or Another Antithrombotic
 This flow applies to PQRS GPRO Web Interface and ACO GPRO Web Interface



SAMPLE CALCULATION:

Performance Rate=

$$\frac{\text{Performance Met (a= 311 Patients)}}{\text{Eligible Denominator (d= 411 Patients)}} = \frac{311 \text{ Patients}}{411 \text{ Patients}} = 75.67\%$$

CALCULATION MAY CHANGE PENDING PERFORMANCE MET ABOVE

*See Data Guidance for further instructions to report this measure

2013 GPRO IVD-2 (NQF 0068): Ischemic Vascular Disease (IVD): Use of Aspirin or Another Antithrombotic

This flow applies to PQRS GPRO Web Interface and ACO GPRO Web Interface

Variable names can be found in the tabs within the IVD Downloadable Resource Table.

See Data Guidance for further instructions to report this measure.

1. Start processing 2013 GPRO IVD-2 (NQF 0068) Flow for the patients that qualified for sample in the IVD Patient Confirmation Flow.
2. Check to determine if the patient has a documented history of Ischemic Vascular Disease (IVD) or Discharged alive for Acute Myocardial Infarction (AMI), Coronary Bypass Graft (CABG), or Percutaneous Coronary Interventions (PCI) at any time in the patient's history up through the last day of the measurement period.
 - a. If no, the patient does not have a documented history of Ischemic Vascular Disease (IVD) or Discharged alive for Acute Myocardial Infarction (AMI), Coronary Bypass Graft (CABG), or Percutaneous Coronary Interventions (PCI) at any time in the patient's history up through the last day of the measurement period, mark appropriately for completion and stop abstraction. This removes the patient from the performance calculations. Stop processing.
 - b. If yes, the patient does have documented history of Ischemic Vascular Disease (IVD) or Discharged alive for Acute Myocardial Infarction (AMI), Coronary Bypass Graft (CABG), or Percutaneous Coronary Interventions (PCI) at any time in the patient's history up through the last day of the measurement period, continue processing.
3. Check to determine if the patient qualified for the module
 - a. If no, the patient did not qualify for the module select: No – Other CMS Approved Reason for patient disqualification. Mark appropriately for completion and stop abstraction. This removes the patient from the performance calculations. Stop processing.
 - b. If yes, the patient does qualify for the module, the patient will be included in the eligible denominator for performance rate calculations. Note: Include remainder of patients listed in the Web Interface that were consecutively confirmed and completed for this measure in the denominator. For the sample performance rate calculation in the flow these patients would fall into the 'd' category (eligible denominator, i.e. 411 patients). Continue processing.
4. Check to determine if the patient has documented use of Aspirin or Another Antithrombotic during the measurement period. Variable Names: IVD_DRUG_CODES=RXNORM (drug exclusion=N).
 - a. If no, the patient did not have a documented use of Aspirin or Another Antithrombotic during the measurement period, performance is not met and should not be included in the numerator. Stop processing.
 - b. If yes, the patient did have a documented use of Aspirin or Another Antithrombotic during the measurement period, performance is met and the patient will be included in the numerator. For the sample performance rate calculation in the flow these patients would fall into the 'a' category (numerator, i.e. 311 patients). Stop processing.

Sample Calculation

Performance Rate Equals

Performance Met is category 'a' in the measure flow (311 patients)

Eligible Denominator is category 'd' in measure flow (411 patients)

311 (Performance Met) divided by 411 (Eligible Denominator) equals a performance rate of 75.67 percent

Calculation May Change Pending Performance Met