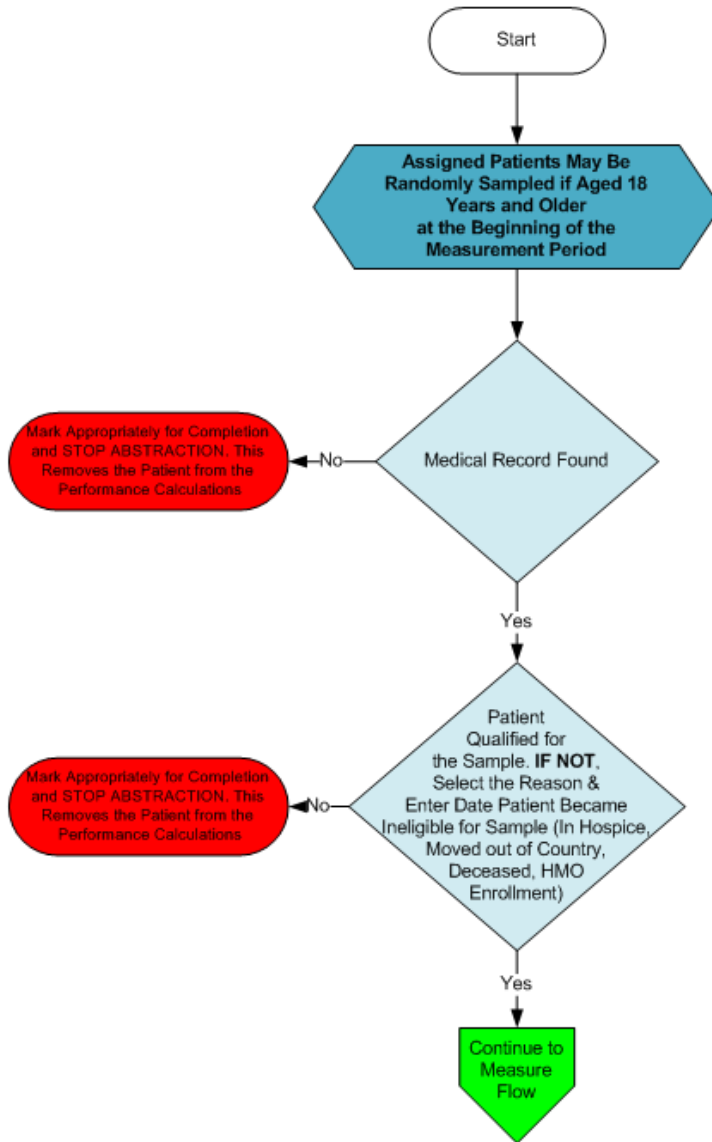


# Patient Confirmation Flow for HF-6

For 2013, confirmation of the "Medical Record Found", or indicating the patient is "Not Qualified for Sample" with a reason of "In Hospice", "Moved out of Country", "Deceased", or "HMO Enrollment", will only need to be done **once** per patient. For module or measure specific reasons a patient is "Not Confirmed" or excluded for "Other CMS Approved Reason", please refer to the associated Data Guidance.



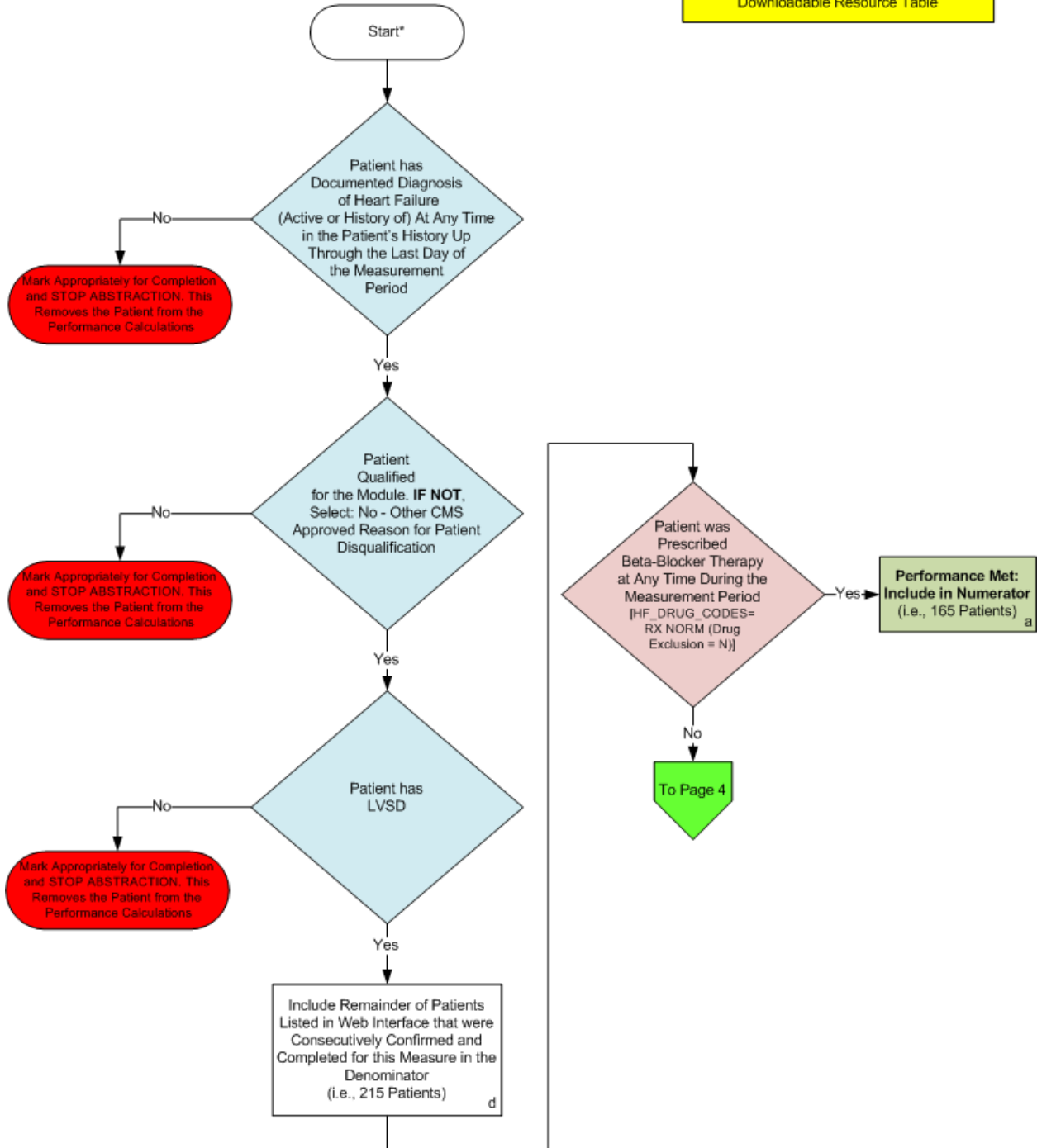
### Patient Confirmation Flow for HF-6

For 2013, confirmation of the “Medical Record Found”, or indicating the patient is “Not Qualified for Sample” with a reason of “In Hospice”, “Moved out of Country”, “Deceased”, or “HMO Enrollment”, will only need to be done **once** per patient. For module or measure specific reasons a patient is “Not Confirmed” or excluded for “Other CMS Approved Reason”, please refer to the associated Data Guidance.

1. Start HF-6 Patient Confirmation Flow. Assigned patients may be randomly sampled if aged 18 years or older at the beginning of the measurement period.
2. Check to determine if Medical Record can be found
  - a. If no, Medical Record not found, mark appropriately for completion and stop abstraction. This removes the patient from the performance calculation.
  - b. If yes, Medical Record found, continue processing.
3. Check to determine if the Patient Qualified for the sample
  - a. If no, the patient does not qualify for the sample, select the reason why and enter the date the patient became ineligible for sample. For example; In Hospice, Moved out of Country, Deceased, HMO Enrollment. Mark appropriately for completion and stop abstraction. This removes the patient from the performance calculations. Stop processing.
  - b. If yes, the patient does qualify for the sample; continue to the 2013 GPRO-HF-6 measure flow.

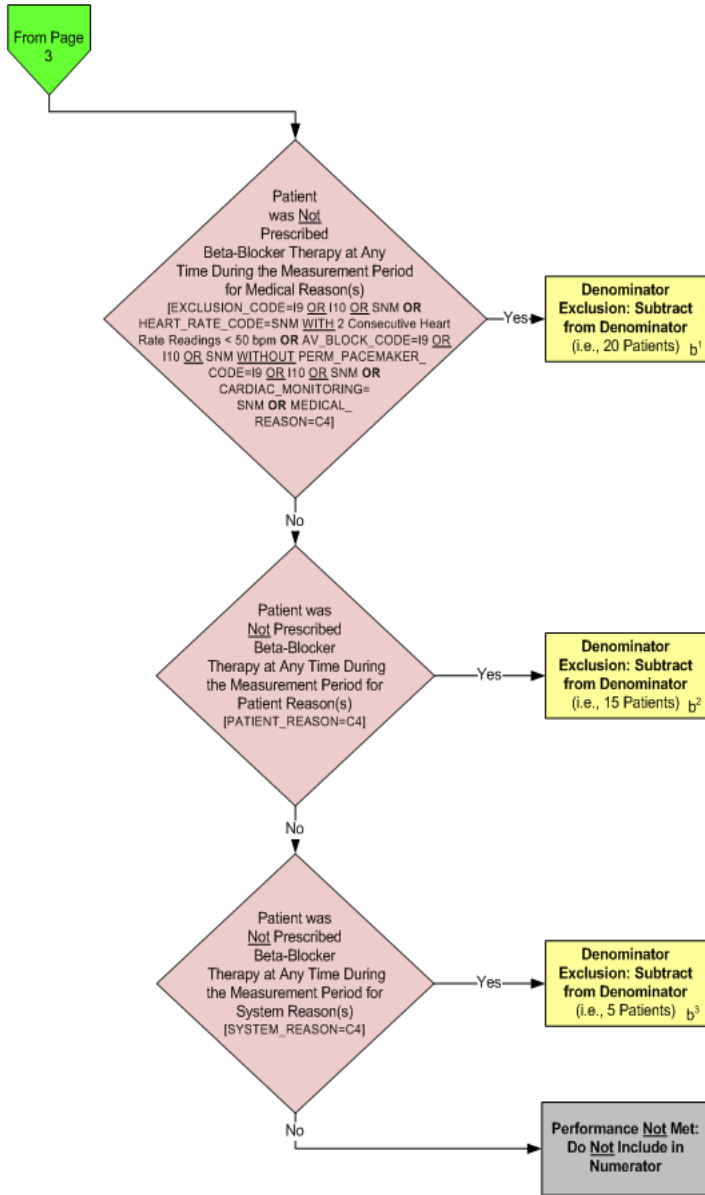
2013 GPRO-HF-6 (NQF 0083): Heart Failure: Beta-Blocker Therapy for Left Ventricular Systolic Dysfunction (LVSD)  
 This flow applies to PQRS GPRO Web Interface and ACO GPRO Web Interface

Variable Names in Brackets [ ] can be found in the tabs within the HF Downloadable Resource Table



\*See Data Guidance for further instructions to report this measure

2013 GPRO-HF-6 (NQF 0083): Heart Failure: Beta-Blocker Therapy for Left Ventricular Systolic Dysfunction (LVSD)  
 This flow applies to PQRS GPRO Web Interface and ACO GPRO Web Interface



**SAMPLE CALCULATION:**

Performance Rate=  $\frac{\text{Performance Met (a = 165 Patients)}}{\text{Eligible Denominator (d=215 Patients) - Denominator Exclusion (b¹ = 20 Patients - b² = 15 Patients - b³ = 5 Patients)}} = \frac{165 \text{ Patients}}{175 \text{ Patients}} = 94.29\%$

CALCULATION MAY CHANGE PENDING PERFORMANCES MET ABOVE

\*See Data Guidance for further instructions to report this measure

2013 GPRO-HF-6 (NQF 0083): Heart Failure: Beta-Blocker Therapy for Left Ventricular Systolic Dysfunction (LVSD)  
*This flow applies to PQRS GPRO Web Interface and ACO GPRO Web Interface*

Variable names can be found in the tabs within the HF Downloadable Resource Table.  
See Data Guidance for further instructions to report this measure.

1. Start processing 2013 GPRO-HF-6 (NQF 0083) Flow for the patients that qualified for sample in the HF-6 Patient Confirmation Flow.
2. Check to determine if the patient has a documented diagnosis of Heart Failure (active or history of), at any time in the patient's history up through the last day of the measurement period.
  - a. If no, the patient does not have a documented diagnosis of Heart Failure (active or history of), at any time in the patient's history up through the last day of the measurement period, mark appropriately for completion and stop abstraction. This removes the patient from the performance calculations. Stop processing.
  - b. If yes, the patient does have documented diagnosis of Heart Failure (active or history of), at any time in the patient's history up through the last day of the measurement period, continue processing.
3. Check to determine if the patient qualified for the module
  - a. If no, the patient did not qualify for the module select: No – Other CMS Approved Reason for patient disqualification. Mark appropriately for completion and stop abstraction. This removes the patient from the performance calculations. Stop processing.
  - b. If yes, the patient does qualify for the module, continue processing
4. Check to determine if the patient has LVSD
  - a. If no, the patient does not have LVSD, mark appropriately for completion and stop abstraction. This removes the patient from the performance calculations. Stop processing.
  - b. If yes, the patient does have LVSD, the patient will be included in the eligible denominator for performance rate calculations. Note: Include remainder of patients listed in the Web Interface that were consecutively confirmed and completed for this measure in the denominator. For the sample performance rate calculation in the flow these patients would fall into the 'd' category (eligible denominator, i.e. 215 patients). Continue processing.
5. Check to determine if the patient was prescribed Beta-Blocker Therapy at any time during the measurement period. Variable Names: HF\_DRUG\_CODES=RXNORM (drug exclusion=N).
  - a. If yes, the patient was prescribed Beta-Blocker Therapy at any time during the measurement period, performance is met and the patient will be included in the numerator. For the sample performance rate calculation in the flow these patients would fall into the 'a' category (numerator, i.e. 165 patients). Stop processing.
  - b. If no, the patient was not prescribed Beta-Blocker Therapy at any time during the measurement period, continue processing.
6. Check to determine if the patient was NOT prescribed Beta-Blocker Therapy at any time during the measurement period for medical reason(s). Variable Names: EXCLUSION\_CODE=I9 OR I10 OR SNM OR HEART\_RATE\_CODE=SNM WITH 2 Consecutive Heart Rate Readings < 50 bpm OR AV\_BLOCK\_CODE=I9 OR

I10 OR SNM WITHOUT PERM\_PACEMAKER\_CODE=I9 OR I10 OR SNM OR CARDIAC\_MONITORING=SNM  
OR MEDICAL\_REASON=C4.

- a. If yes, the patient was Not prescribed Beta-Blocker Therapy at any time during the measurement period for medical reason(s), this is a denominator exclusion and the case should be subtracted from the eligible denominator. For the sample performance rate calculation in the flow these patients would fall into the 'b' category (denominator exclusion, i.e. 20 patients). Stop processing.
  - b. If no, the patient was Not prescribed Beta-Blocker Therapy at any time during the measurement period for medical reason(s), continue processing.
7. Check to determine if the patient was Not prescribed Beta-Blocker Therapy at any time during the measurement period for patient reason(s). Variable Names: PATIENT\_REASON=C4
- a. If yes, the patient was Not prescribed Beta-Blocker Therapy at any time during the measurement period for patient reason(s), this is a denominator exclusion and the case should be subtracted from the eligible denominator. For the sample performance rate calculation in the flow these patients would fall into the 'b' category (denominator exclusion, i.e. 15 patients). Stop processing.
  - b. If no, the patient was Not prescribed Beta-Blocker Therapy at any time during the measurement period for patient reason(s), continue processing.
8. Check to determine if the patient was Not prescribed Beta-Blocker Therapy at any time during the measurement period for system reason(s). Variable Names: SYSTEM\_REASON=C4
- a. If yes, the patient was Not prescribed Beta-Blocker Therapy at any time during the measurement period for System Reason(s), this is a denominator exclusion and the case should be subtracted from the eligible denominator. For the sample performance rate calculation in the flow these patients would fall into the 'b' category (denominator exclusion, i.e. 5 patients). Stop processing.
  - b. If no, the patient was Not prescribed Beta-Blocker Therapy at any time during the measurement period for system reason(s), performance is not met and should not be included in the numerator. Stop processing.

### Sample Calculation

Performance Rate Equals

Performance Met is category 'a' in the measure flow (165 patients)

Eligible Denominator is category 'd' in measure flow (215 patients)

Denominator Exclusion is category 'b' in measure flow (40 patients)

165 (Performance Met) divided by 175 (Eligible Denominator minus Denominator exclusions) equals a performance rate of 94.29 percent

Calculation May Change Pending Performance Met