

NBER WORKING PAPER SERIES

COMPETING FOR CAPITAL:
AUDITING AND CREDIBILITY IN FINANCIAL REPORTING

Raphael Boleslavsky
Bruce I. Carlin
Christopher Cotton

Working Paper 23273
<http://www.nber.org/papers/w23273>

NATIONAL BUREAU OF ECONOMIC RESEARCH
1050 Massachusetts Avenue
Cambridge, MA 02138
March 2017

We are grateful to Daniel Andrei, Ana Babus, Gadi Barlevy, Ray Ball, Tony Bernardo, Taylor Begley, Amil Dasgupta, Shaun Davies, Mike Fishman, Henry Friedman, Willie Fuchs, Simon Gervais, Barney Hartman-Glaeser, Sam Hartzmark, David Hirshleifer, Jack Hughes, Peter Kondor, Doron Levet, Stefan Lewellen, William Mann, Justin Murfin, Martin Oehmke, Stavros Panageas, Daniel Paravisini, Kelly Shue, Sheridan Titman, and seminar participants at the University of Chicago, London Business School, London School of Economics, Chicago Federal Reserve Bank, University of Maryland, University of Texas, University of Toronto, UCLA, Arizona State University, University of Alberta, University of Pittsburgh, and participants at the 2016 Western Finance Association Meeting. The views expressed herein are those of the authors and do not necessarily reflect the views of the National Bureau of Economic Research.

NBER working papers are circulated for discussion and comment purposes. They have not been peer-reviewed or been subject to the review by the NBER Board of Directors that accompanies official NBER publications.

© 2017 by Raphael Boleslavsky, Bruce I. Carlin, and Christopher Cotton. All rights reserved. Short sections of text, not to exceed two paragraphs, may be quoted without explicit permission provided that full credit, including © notice, is given to the source.

Competing for Capital: Auditing and Credibility in Financial Reporting
Raphael Boleslavsky, Bruce I. Carlin, and Christopher Cotton
NBER Working Paper No. 23273
March 2017
JEL No. D43,G3

ABSTRACT

When self-interested agents compete for scarce resources, they often exaggerate the promise of their activities. As such, principals must consider both the quality of each opportunity and each agent's credibility. We show that principals are better off with less transparency because they gain access to better investments. This is due to a complementarity between the agents' effort provision and their ability to exaggerate. As such, it is suboptimal for principals to prevent misreporting, even if doing so is costless. This helps explain why exaggeration is ubiquitous during allocation decisions: money management, analyst coverage, private equity fundraising, and venture capital investments.

Raphael Boleslavsky
University of Miami
Department of Economics
School of Business Administration
5250 University Drive
Coral Gables, FL 33146
r.boleslavsky@miami.edu

Christopher Cotton
Queen's University
Department of Economics
Kingston, Ontario K7L 3N6
cotton@econ.queensu.ca

Bruce I. Carlin
Anderson Graduate School of Management
UCLA
110 Westwood Plaza, Suite C413
Los Angeles, CA 90095-1481
and NBER
bruce.carlin@anderson.ucla.edu

“Entrepreneurs tend to exaggerate. They exaggerate the success of their business when talking to startup investors. They exaggerate the market potential of their products to find distribution partners. They exaggerate the soundness of their strategy to recruit employees.”

–*Asheesh Advani, Founder of CircleLending and CEO of Covestor*¹

“Valuations, while always important, take on greater significance during the period of (interim private equity) fund marketing... Because investors and potential investors often question the valuations of active holdings, managers may exaggerate the performance or quality of these holdings.”

–*Bruce Karpati, Chief, SEC Enforcement Division Asset Management Unit*²

1 Introduction

Financial exaggeration is ubiquitous when individuals or organizations compete for scarce resources. This is because the state of the art in financial reporting grants marked discretion to forecasters³ and every competitor has an incentive to put his best foot forward when trying to persuade a decision-maker to choose his opportunity. Some examples include private equity firms competing for interim funding, corporations attracting analyst coverage, divisions within a firm jockeying for resources, and investment firms competing for capital flows. As such, any decision-maker is rightfully skeptical because she needs to rely on agents for information who themselves are affected by what is communicated (Milgrom and Roberts, 1986). In response, agents may benefit from measures that enhance the credibility of reports, for example by allowing ex post auditing. However, not all reports are equally credible - some agents may allow unfettered access to auditors, while others obfuscate by allowing only partial access, or by hiring auditors that are biased in their favor.

Therefore, competition for resources occurs on two dimensions: the quality of the opportunity that is developed and the credibility with which reporting reflects hidden information. In this paper, we characterize the interaction of these considerations during resource allocation. We study a model of endogenous credibility in which a decision-maker is tasked with allocating a scarce resource, but has limited commitment ability⁴ and faces a conflict of interest when she receives information from agents who realize a private benefit from acquiring the resource. We compare settings in which the principal has access to a technology that allows her to perfectly audit agents ex post to those in which the credibility of the reports are left to the discretion of the competing agents. We show that when agents choose to have less credibility, they have higher incentives to make better investments. This in fact makes the decision-maker better off: she would rather cope

¹See <http://www.entrepreneur.com/howto/startyourbiz.html> or <http://www.entrepreneur.com/article/197224>.

²See Barber and Yasuda (2016), who study interim performance reporting during private equity fundraising.

³For example, the discounted cash flow (DCF) method leaves its exact structure and its inputs unspecified: the length of the forecast period, the discount factor, the terminal growth rate, and the forecasted inputs, to name a few.

⁴For this reason, the Revelation Principle cannot be invoked in our analysis. Violations of the Revelation Principle that are linked to managerial misreporting in practice may arise due to limited communication, limited ability to contract, or limited commitment (Arya, Glover, and Sunder, 1998).

with less transparency because she gains access to better investment prospects. So, even if she could costlessly monitor the value of projects before allocating the scarce resource, it may be optimal to commit *not* to monitor. This may provide a rationale for why we often observe an empirical lack of credibility in many settings and even a tolerance for it, especially when rational Bayesian financial institutions are present.⁵

Critical to this result is a key difference between the information structure of allocation decisions and standard agency theory: effort provision is observable⁶ and outcomes are unobservable, which makes reporting necessary. When facing less trustworthy information, a decision-maker relies more on her prior beliefs that a project has been successful and therefore puts more weight on observable investments in quality when making her choice. Anticipating this, agents compete by increasing their observable investments and the decision-maker is better off coping with less transparency because she gains access to better investment prospects.

To see this simply, consider the following example. Suppose a decision-maker needs to allocate a scarce, indivisible resource to one of two agents. Before making the allocation, each agent i can employ publicly observable effort $q_i \in [0, 1]$ at a cost $\frac{q_i^2}{2}$ that affects the expected value of a project that uses the resource as an input. A high-type project arises with probability q_i . The decision-maker values selecting a high-type project at $V = 1$ and other projects at zero. Each agent has a private benefit of receiving the resource equal to one and no other source of revenue. Following their effort choices, each agent privately observes his outcome and makes a report to the decision-maker. In turn, the decision-maker allocates the resource to the agent with the highest likelihood of having a high-type project and settles ties with random allocation. First, consider a setting in which the agent's reports always accurately reveal their realized type (i.e., full information). Each agent chooses an effort level to maximize his payoff $q_i(1 - q_j) + \frac{1}{2}(q_i q_j + (1 - q_i)(1 - q_j)) - \frac{q_i^2}{2}$. Given this, each agent employs effort $q_i = \frac{1}{2}$ and the decision-maker's expected payoff is $1 - (1 - q_i)(1 - q_j) = \frac{3}{4}$. Second, consider a setting in which the agents always exaggerate and claim their project is high-type, even when it is not. Because reports are unreliable, the decision-maker's posterior belief equals the expected value of the project given each agent's observable investment q_i . The decision-maker awards the resource to the agent that undertakes the greatest investment. Internalizing this, the agents compete to have a higher expected type than their opponent and choose $q_i = 1$ in equilibrium.⁷ The decision-maker is assured to receive a payoff equal to one and is better off with less reliable information.

While this simple example illustrates the interaction between investment quality and transparency, it says nothing about endogenous credibility. We characterize this in several model varia-

⁵ For example, it is generally accepted that firms can rely on the more-subjective narrative portion of their accounting reports to engage in impression management (e.g. Merkle-Davies and Brennan, 2007).

⁶In the paper, we study publicly observable effort provision. As will be better appreciated later, these economic forces are also likely to survive in settings where signals about effort are sufficiently precise.

⁷Note that when both agents choose $q_i = 1$, both agents payoffs are zero. Given that the other agent invests $q_j = 1$, any deviation $0 \leq q_i < 1$, ensures that project i is not selected, and hence, generates a payoff that is weakly negative. Thus no such deviation is profitable. Note further that no other symmetric pure strategy equilibrium exists because an agent can always benefit by increasing his quality by a small amount. Also, no asymmetric pure strategy equilibrium exists either because the agent with the higher quality can benefit by reducing his quality by a small amount.

tions. In our base model, after two identical agents select the quality of their investment technology, they each choose an auditor who determines the credibility associated with their reports. Without an auditor, each agent would always report a good outcome and therefore, his report would have no credibility whatsoever. But, with an auditor that has power to (partially) curb misreporting, each agent can commit to be truthful, at least some of the time. The better the auditor, the more credible the report that a decision-maker receives. As such, each agent's credibility choice drives how much exaggeration arises, which depends on an important tradeoff: exaggeration increases the probability that the decision-maker receives a good report, but it also makes the decision-maker treat a good report with greater skepticism.

In the base model, each agent selects the same quality in equilibrium, generating a valuable project with the same probability. If the marginal cost of quality for the agents is low, they invest more to develop high quality projects, so that projects are likely to be valuable. In this case, agents are more concerned with avoiding the decision-maker's skepticism than with concealing bad outcomes, and the agents select reporting policies that perfectly reveal project value. However, if the marginal cost of quality is high, then agents invest less. Here, concealing a bad outcome becomes a more significant concern for the agents, and the degree of credibility is determined by a mixed strategy.

If a less adept auditor is chosen and the reports are not perfectly credible, the decision-maker may be persuaded to allocate the resource to a lower value project. The decision-maker could eliminate this inefficiency by requiring that the agents report truthfully or by auditing all reports perfectly *ex post* (full monitoring). However, this turns out to be suboptimal *ex ante* because it induces the agents to invest less in developing a more productive technology. A complementarity exists between investment quality and exaggerated reporting. Indeed, higher investment quality reduces the decision-maker's skepticism, which in turn allows agents to exaggerate more without undermining the credibility of his good report. With a higher marginal cost of quality, the ability to exaggerate is more valuable. Thus, the incentive to invest is stronger when exaggeration is allowed. As such, we show that it is better for the decision-maker to cope with some *ex post* inefficiency in order to increase the probability that a high-value project exists. Furthermore, because the decision-maker is indifferent between monitoring and not when the marginal cost of quality is low, we show that it is weakly suboptimal for the decision-maker to require truthful reporting (i.e., to fully monitor the reports), even if doing so is costless.

Following this, we analyze an extension in Section 3 in which the conflict of interest between the parties is not as severe. Here, each agent still prefers that the decision-maker invests in his project, but if the decision-maker does so, the payoff to the decision-maker and agent are identical. As we discuss in the paper, such preference alignment may arise with profit sharing and no private benefits, or if reputational concerns are important to the agents. In this case, the equilibrium financial reporting strategies perfectly reveal project values. Compared to full monitoring, there are higher levels of quality and better expected payoffs to the decision-maker. However, the comparison with the main model when exaggeration is allowed is equivocal. If the cost of quality is sufficiently high, dealing with strongly biased agents and coping with exaggeration leads to higher investment quality and superior expected payoffs to the decision-maker.

We then incorporate two extensions into the model in Section 4, in which agents are *ex ante* asymmetric. First, with two agents competing, we allow one agent’s marginal cost of quality to be higher than the other’s. This might arise in a corporation in which two divisions compete within an internal capital market, but one division is stronger than the other. Not surprisingly, whether or not the decision-maker monitors reports, equilibrium investment in quality is asymmetric, whereby the stronger agent invests more in quality. Also, consistent with the complementarity described above, when exaggeration is allowed the agent who chooses the higher quality technology exaggerates his project’s value more than his competitor.⁸ Thus, the agent with the more productive technology is less likely to communicate that he has generated a low value project. However, while the complementarity between exaggeration and quality increases both agents’ investments, the effect is actually stronger for the weaker agent. The relative increase in quality (compared to full monitoring) is higher for the weaker agent: allowing financial exaggeration generates a relatively larger increase in the weaker agent’s investment.

Subsequently, we consider a continuum of heterogeneous agents. This extension yields several novel implications. First, when the resource is very scarce, reporting by all agents is fully-informative, even if exaggerated reporting is permitted. However, when the resource is in higher supply, exaggeration becomes part of the equilibrium. Second, when exaggeration arises, the highest skilled agents provide the least credible reports, whereas lower skilled agents produce less quality, but compensate with more truthful reporting.⁹ This latter finding helps us understand the interaction of skill and transparency in investment markets. Ostensibly, higher skilled people work at hedge funds. Indeed, hedge fund managers are known to use more sophisticated financial instruments and more complex securities than mutual fund managers (e.g., Fung and Hsieh, 1997; Koski and Pontiff, 1999; Bookstaber, 2003). Hedge funds are also more opaque than mutual funds (Brown and Goetzmann, 2003). Our analysis therefore provides insights into the industrial organization of money management markets.¹⁰

The findings in our paper also apply to other empirical settings, including private equity fundraising, venture capital allocation, investment in internal capital markets, and earnings management. We detail these applications in Section 5, along with a discussion of the related literature.

2 Model with Two Symmetric Agents

A decision-maker has an indivisible, scarce resource that she wishes to allocate to one of two agents. Each agent invests in a production technology that yields a positive NPV project. As such, absent any further information, the decision-maker prefers to participate rather than sit out. However,

⁸Technically, this is because the stronger agent’s distribution function in the mixed strategy first-order stochastically dominates the weaker agent.

⁹Interestingly, in equilibrium these effects exactly offset: the expected quality of projects run by highly able agents, and the expected quality of projects run by less able agents—conditional on receiving the resource—is identical.

¹⁰This is distinct from Gervais and Strobl (2012), who posit that money managers tradeoff between signaling their skill versus giving away secrets via transparency. In their framework, high and low skill agents form hedge funds, whereas medium skill agents form mutual funds. In our framework, there is a separation between two groups: high skill agents with no transparency and lower skill agents with better reporting.

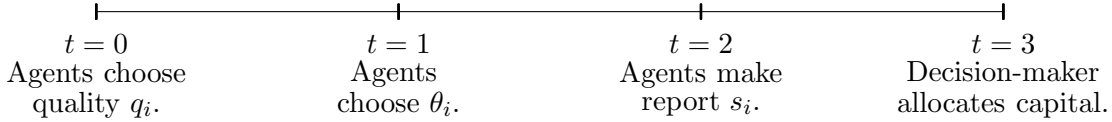


Figure 1: At $t = 0$, each agent chooses the quality of their production technology, q_i . At $t = 1$, each agent chooses their reporting policy. Then, at $t = 2$, each agent realizes their type τ_i and makes a report to the decision-maker $s_i \in \{G, B\}$. Finally, at $t = 3$, the decision-maker allocates her capital to one of the projects.

her goal is to pick the better opportunity, whereas each agent strictly wishes to attract the resource for his own use.

Figure 1 illustrates the timing of the game. At $t = 0$, each agent $i \in \{a, b\}$ simultaneously chooses the quality of his production technology, which we denote as $q_i \in [0, 1]$. Given this investment, agent i 's eventual project will have a high value ($\tau_i = H$) with probability q_i and low value ($\tau_i = L$) with probability $1 - q_i$. Examples of investment in q_i might be the intensity of an agent's R&D efforts or the skill of his management team. Investment in q_i is associated with a convex cost

$$C(q_i) = \frac{q_i^2}{\rho}.$$

Investment is publicly observable, but unverifiable and therefore not contractible.¹¹

At $t = 1$, each agent simultaneously chooses a reporting policy $\theta_i \in [0, 1]$, which determines the credibility with which financial projections are communicated to the decision-maker. Define $s_i = H$ ($s_i = L$) to be a report by the agent that his project is high (low) type. Assume that each agent always reports $s_i = H$ when he has a valuable project ($s_i = H$ whenever $\tau_i = H$). However, if an agent has a low-type project, he still reports $s_i = H$ with probability θ_i . As such,

$$\Pr(s_i = H | \tau_i = H) = 1 \text{ and } \Pr(s_i = H | \tau_i = L) = \theta_i. \tag{1}$$

If $\theta_i = 0$, then reporting is fully transparent. The greater the value of θ_i , the less informative is the report.

The agents' choice of θ_i is observable and chosen before the agent himself knows the value of his project. It is meant to capture a commitment to verification by an auditor. Because each agent has a private benefit to secure the scarce resource, they would like to report $s_i = H$ as often as possible after learning their type, even if they realized it was in fact a low-type project (i.e., exaggerate). However, the choice of θ_i restricts how often an agent can get away with it. As such, if an agent reports $s_i = H$ and the project survives an audit by a monitor that is known to be more careful, the decision-maker can be more confident about that opportunity.

A related interpretation of θ might be the degree to which financial information can obfuscated. In an alternative model in which a decision-maker has a cost of sorting out financial projections,

¹¹For now, the agents are ex ante identical. In Section 4, we consider what happens when $\rho_a > \rho_b$.

$\theta = 0$ makes it easy to contrast high- and low-type projects, whereas $\theta = 1$ makes this impossible and an intermediate value of θ obfuscates project quality in a way that induces suboptimal decision-making.

At $t = 2$ each agent privately observes the value of his project $\tau_i \in \{H, L\}$ and makes a report $s_i \in \{H, L\}$ consistent with (1). Finally, at $t = 3$, the decision-maker allocates the resource and then learns the outcome.

Each agent's project is worthless without the scarce resource. The agent who persuades the decision-maker to choose his project receives a payoff normalized to one. The other agent receives zero. If the decision-maker invests in a high value project, she receives a payoff normalized to one. Otherwise, her payoff is zero. Given this, the decision-maker's expected payoff of allocating the resource to project i is equal to the posterior probability that $\tau_i = H$, given the available information—the investment q_i , the level of credibility θ_i , and the report s_i . It is sequentially rational for her to assign the resource to the project that she believes is more likely to be high. If she holds the same beliefs about each project, then we assume that she randomizes fairly between them. Once the allocation is made, the true type of the project is revealed and the payoffs are realized.

This set-up focuses on an environment in which contracts are either infeasible or illegal, forcing the decision-maker to rely on competition to generate both investment quality and transparency. This type of limitation arises naturally when the underlying variables are observable by the decision-maker, but unverifiable in court. Understanding the quality of the agent's production technology or the accuracy of the reporting technology may require specialized expertise that the court does not possess. Furthermore, in a number of natural applications, contracts are explicitly prohibited. For example, the decision-maker may be a money manager with a fiduciary duty to her client and the two agents are mutual funds who would like to attract capital. The mutual funds can window-dress the value of their investments, but it may be illegal for them to pay the money manager a side payment in order to attract capital. The payoff to a fund is positive if it attracts capital and the payoff is positive for the money manager if her client enjoys a high return. Another application is the market for analyst coverage. Equity analysts choose which corporations to follow and enjoy positive payoffs when they follow more successful firms. Likewise, corporations compete for this coverage because they receive benefits from attention in financial markets. Contracts between analysts and firms in this setting are not only infeasible, but also illegal.

3 Equilibrium Characterization

3.1 Monitoring Benchmark

Suppose that financial reporting must be truthful (i.e., $\theta_i = \theta_j = 0$) so that the decision-maker is perfectly informed. When each agent selects his production technology, he anticipates that $\Pr(\tau_i = H) = q_i$ and $\Pr(\tau_i = L) = 1 - q_i$. For fixed investment levels (q_a, q_b) , the expected payoffs are

$$u_a(q_a, q_b) = q_a(1 - q_b) + \frac{1}{2}(q_a q_b + (1 - q_a)(1 - q_b)) - \frac{q_a^2}{\rho} = \frac{1}{2}(1 + q_a - q_b) - \frac{q_a^2}{\rho}$$

$$u_d(q_a, q_b) = 1 - (1 - q_a)(1 - q_b).$$

By inspection, the marginal benefit of improving quality for either agent is independent of the other agent's choice and each agent's investment level satisfies the first order condition: $1/2 = 2q_i/\rho$. Therefore, at $t = 0$, each agent has a dominant strategy to choose $q_i = \rho/4$ and is equally likely to receive the resource. The associated expected payoffs are

$$u_i = \frac{1}{2} - \frac{\rho}{16} \quad \text{and} \quad u_d = 1 - (1 - \frac{\rho}{4})^2 = \frac{\rho}{2} - \frac{\rho^2}{16}. \quad (2)$$

In what follows, we will compare these quantities to when there is less transparency.

3.2 Equilibria with (Possibly) Less Transparency

We solve for the Perfect Bayesian Equilibria of the game and proceed by backward induction. We first characterize the equilibrium choices of θ_i for each agent given the quality of investments (q_i, q_j) made at $t = 0$. Following that, we analyze the symmetric Nash equilibrium in quality (q^*, q^*).

If agent i chooses investment level q_i at $t = 0$ and reporting policy θ_i at $t = 1$, then the probability that a project is reported as high-type ($s_i = H$) is

$$r_i = q_i + \theta_i(1 - q_i).$$

The decision-maker's updated belief that a project with $s_i = H$ is in fact $\tau_i = H$ is

$$g_i = \frac{q_i}{q_i + \theta_i(1 - q_i)} = \frac{q_i}{r_i}.$$

An agent's choice of θ_i involves a simple tradeoff: increasing θ_i increases the probability that the decision-maker gets a good report, but causes the decision-maker to view good signals with greater skepticism.

If θ_i and θ_j are such that $g_i > g_j$, then the decision-maker will invest in project i whenever both projects are reported to be high-types. In this case, agent i receives the resource whenever he gets a good realization, regardless of the other agent's draw, and will also receive the resource with probability $\frac{1}{2}$ when both agents report $s_i = L$. Therefore, following the investment decisions (q_i, q_j) at $t = 0$, agent i 's expected payoff as a function of (θ_i, θ_j) is:

$$u_i(\theta_i, \theta_j | q_i, q_j) = \begin{cases} r_i(1 - r_j) + \frac{1}{2}(1 - r_i)(1 - r_j) & \text{if } g_i < g_j \\ r_i + \frac{1}{2}(1 - r_i)(1 - r_j) & \text{if } g_i > g_j \\ r_i(1 - \frac{1}{2}r_j) + \frac{1}{2}(1 - r_i)(1 - r_j) & \text{if } g_i = g_j. \end{cases} \quad (3)$$

We make two observations about best responses. First, given g_j , agent i always prefers to select a θ_i for which g_i is marginally higher than g_j , rather than for which $g_i = g_j$. This means that an equilibrium involving $g_i = g_j$ is possible only at $g_i = g_j = 1$ (i.e., $\theta_i = \theta_j = 0$). Second, notice that among all financial reporting policies for which $g_i < g_j$, agent i prefers $g_i = q_i$ (i.e., $\theta_i = 1$).¹²

¹²If $g_i < g_j$ then project i will be selected for certain if and only if his reported type is high and j 's is low; otherwise project i will either not be chosen, or the decision-maker will randomize. By choosing an uninformative reporting policy, agent i assures that its reported type will be high, and therefore guarantees that its project will be selected if the other agent's reported type is low. Therefore, if an asymmetric pure strategy equilibrium exists, then one agent must play an uninformative strategy. However, because of an open set issue, the best response to an uninformative policy is undefined.

Taken together, these observations suggest that the equilibrium of the sub-game at $t = 1$ is either a fully-revealing pure strategy equilibrium $\theta_i = \theta_j = 0$, or a mixed strategy equilibrium.¹³

Proposition 1. *Suppose that $q_a + q_b \geq 1$. Then, the unique Nash equilibrium is fully-revealing, $\theta_a = \theta_b = 0$, with payoffs to agent i of*

$$u_i(q_i, q_j) = \frac{1}{2}(1 + q_i - q_j) - \frac{q_i^2}{\rho}. \quad (4)$$

If $q_a + q_b < 1$, a mixed strategy equilibrium exists in which there is financial exaggeration. In this case, the expected payoffs to the agents are

$$u_i(q_i, q_j) = \frac{q_i}{q_i + q_j} - \frac{q_i^2}{\rho} \quad (5)$$

and the higher quality technology leads to more exaggeration (i.e., θ_a first-order stochastically dominates θ_b in the mixed strategies).

According to Proposition 1, if $q_a + q_b \geq 1$, then $\theta_a = \theta_b = 0$. Otherwise, there is lower transparency and financial exaggeration is part of the equilibrium. This inequality can be understood as follows. Suppose that agent b always tells the truth and consider agent a 's best response. If $\tau_b = L$ and $\tau_a = H$, then there is no gain to dishonesty. Agent a gets the resource anyway. If $\tau_b = H$ and $\tau_a = L$, dishonesty is futile: the decision-maker allocates the resource to agent b because his probability of having a high-type project is one. The only state in which exaggeration has a potential benefit or cost is when $\tau_a = \tau_b$. If $\tau_a = \tau_b = L$, then exaggeration is beneficial to agent a ; no matter how much he exaggerates, a good report will ensure that his project looks better than project b (which is surely type L). However, if $\tau_a = \tau_b = H$, then exaggeration hurts agent a . In this case, $\theta_a > 0$ causes the decision-maker to be skeptical of project a , and makes her more likely to allocate the resource to project b .

The probability that $\tau_a = \tau_b = H$ is $q_a q_b$ and the probability that $\tau_a = \tau_b = L$ is $(1 - q_a)(1 - q_b)$. If $q_a + q_b \geq 1$, then $q_a \geq 1 - q_b$ and $q_b \geq 1 - q_a$. This means, in turn, that $q_a q_b \geq (1 - q_a)(1 - q_b)$. Therefore, $q_a + q_b \geq 1$ implies that it is more likely for the agents to both get a high-type outcome than for them to both get a low-type. In this case, the expected cost of exaggeration is higher than its benefit, and the agents report truthfully. Intuitively, when good outcomes are likely, both agents would rather avoid the skepticism of the decision-maker. In contrast, when $q_a + q_b < 1$, or equivalently $q_a q_b < (1 - q_a)(1 - q_b)$, the expected benefit of exaggeration is higher than its cost. In such case, bad outcomes are more likely and it is better for each agent to exaggerate in order to make his project look more attractive.

Lemmas A2-A3 in the appendix characterize the unique mixed strategy equilibrium with exaggeration that arises when $q_a + q_b < 1$. According to Proposition 1, the agent with a higher quality production technology exaggerates more-aggressively. This implies that there is a complementarity

¹³The mixed strategy equilibrium requires that agents select policies without perfectly anticipating the other agent's choices, and that adjusting one's policy is infeasible after $t = 1$.

between investment in a production technology and financial exaggeration. The more an agent invests in his production technology, the more optimistic the decision-maker is about his project's quality. Thus, the agent can exaggerate to a larger degree, while maintaining the decision-maker's perception that the project is higher quality. Exaggeration is valuable to the agent, because it reduces the probability with which the decision-maker observes a bad report. Thus, the agent with the more productive technology exaggerates more in equilibrium, and expects a higher equilibrium payoff.

Based on Proposition 1, the payoff to each agent then depends on their relative investment in quality:

$$u_i(q_i, q_j) = \begin{cases} \frac{q_i}{q_i+q_j} - \frac{q_i^2}{\rho} & \text{if } q_i + q_j \leq 1 \\ \frac{1}{2}(1 + q_i - q_j) - \frac{q_i^2}{\rho} & \text{if } q_i + q_j > 1 \end{cases}$$

This payoff function is continuous everywhere and is differentiable everywhere except for possibly $q_i = 1 - q_j$.¹⁴ The non-differentiability arises when the investment levels change the equilibrium from one of full disclosure to one in which exaggeration is present. Despite this non-differentiability, characterizing the symmetric equilibria of the game is straightforward.

Proposition 2. *The symmetric Nash equilibrium of the investment game is as follows:*

(i) *Suppose that $\rho > 2$. Then, $q_a = q_b = \frac{\rho}{4}$ at $t = 0$ and $\theta_a = \theta_b = 0$ at $t = 1$.*

(ii) *Suppose that $\rho \leq 2$. Then, $q_a = q_b = \frac{\sqrt{2\rho}}{4}$ at $t = 0$ and the agents engage in financial exaggeration at $t = 1$.*

According to Proposition 2, the cost of investment affects the agents' tendency to exaggerate if given the opportunity to do so. When ρ is sufficiently high, $C(q_i)$ is lower and less convex, making it easier for the agents to invest in quality. In this case, the agents do not exaggerate because they find it better to avoid the decision-maker's skepticism. Given symmetry in equilibrium, the inequality in Proposition 1 may be written as $q^* + q^* \geq 1$, or $q^* \geq \frac{1}{2}$. Substituting $q^* = \frac{\rho}{4}$ yields $\rho \geq 2$, which is true by assumption. Therefore, when the marginal cost of quality is sufficiently low, the decision-maker can rely on the agents to tell the truth.

When ρ is lower, making $C(q_i)$ higher and more convex, the agents tend to exaggerate the performance of their projects. In this case, the agents are more constrained and invest less. Revisiting the inequality in Proposition 1, $q^* < \frac{1}{2}$, which means that exaggeration is part of the equilibrium. In this case, the agents are more concerned with concealing bad outcomes than with the decision-maker's skepticism. However, as we show in the next corollary, investment by the agents is higher with exaggeration than without it. In essence, the ability to exaggerate relaxes the constraint imposed by the high cost function and introduces a complementarity between investment and misreporting.

¹⁴While it is not the focus of our paper, it is interesting to note that the mixed strategy equilibrium of the financial reporting stage generates a payoff function of the "ratio-form" commonly used in the study of contests (Tullock 1980).

Corollary 1. *Suppose that $\rho \leq 2$. Then, in a symmetric equilibrium, there is more investment in quality when exaggeration is allowed than in the fully-informative benchmark.*

This result can be appreciated by comparing the quality choices in Proposition 2 to those in the fully-revealing benchmark. Indeed, exaggeration leads to higher quality if

$$\frac{\sqrt{2\rho}}{4} \geq \frac{\rho}{4},$$

or $\rho \leq 2$. This implies that the ability to exaggerate allows for a complementarity between investment in project quality and future financial exaggeration. If the marginal cost of investment in quality is sufficiently high, then it might be preferable for a decision-maker to allow agents to misreport. We explore this formally in the next proposition.

Proposition 3. *(Decision-maker's Payoff) Suppose that $\rho < 2$. If no exaggeration is allowed, the payoff to the decision-maker is*

$$u_p^{NE} = \frac{\rho}{2} - \frac{\rho^2}{16}. \quad (6)$$

If exaggeration is allowed, the payoff to the decision-maker is

$$u_p^{EX} = \begin{cases} \frac{19}{12} \frac{\sqrt{2\rho}}{4} & \text{if } \rho \leq \frac{8}{9} \\ \frac{1}{12(\frac{\sqrt{2\rho}}{4})^2} (1 - 9\frac{\sqrt{2\rho}}{4} + 27(\frac{\sqrt{2\rho}}{4})^2 - 8(\frac{\sqrt{2\rho}}{4})^3) & \text{if } \frac{8}{9} \leq \rho \leq 2. \end{cases} \quad (7)$$

For all values of $\rho < 2$, $u_p^{EX} > u_p^{NE}$.

According to Proposition 3, the decision-maker is strictly better off allowing the agents to exaggerate for $\rho < 2$. For $\rho > 2$ there is truth-telling anyway, so monitoring is irrelevant. Hence, monitoring the agents is always weakly worse for the decision-maker.

3.3 Preference Alignment

So far, we have only considered a setting in which there is a strong conflict of interest between the agents and the decision-maker. The agent who is chosen receives a fixed payoff, irrespective of whether the outcome is high or low. Now, let us reconsider the analysis when the agent receives a payoff if the decision-maker accepts his project *and* it turns out to be a high type. This type of payoff might reflect the agent's reputational concerns, or a split of surplus between the decision-maker and agent if the project is successful.

The set-up is unchanged from Section 2 except that an agent receives a benefit only when his project is funded and $\tau = H$. It is easy to show that $\theta_i = 0$ is a weakly dominant strategy for each agent. This is because the agent's payoff when $\tau = L$ is zero, no matter what type of reporting strategy is chosen. Given this, calculating the equilibrium investment levels is straightforward. The expected payoff to each agent is

$$u_i(q_i, q_j) = q_i \left(1 - \frac{q_j}{2}\right) - \frac{q_i^2}{\rho}.$$

Since this function is strictly concave in q_i , the best response for agent i is defined by the following first order condition that is linear in the choices of each agent:

$$\left(1 - \frac{q_j}{2}\right) - \frac{2q_i}{\rho} = 0.$$

Solving yields $q = \frac{2\rho}{\rho+4}$.

Now, we can compare this level of investment to those in the base model. First, consider the case of full monitoring. The agents always invest more when the conflict of interest is mild:

$$\frac{2\rho}{\rho+4} > \frac{\rho}{4} \iff \rho < 4.$$

This is not surprising because in both scenarios, the agents tell the truth. However, when a low-type project does not generate a payoff for the agent, there is an additional incentive to avoid bad realizations¹⁵.

We can now contrast this when exaggeration is allowed, which introduces a tradeoff for the decision-maker. On one hand, as we showed before, financial exaggeration increases the incentives to invest in quality because prior beliefs play a role in evaluation. At the same time, in the base case, the agent may benefit even when his project is low value, which lowers the incentive to invest in quality. It turns out that for small values of ρ , investment is higher in the base case with exaggeration. To see this,

$$\frac{2\rho}{\rho+4} < \frac{\sqrt{2\rho}}{4} \iff \rho < 12 - 8\sqrt{2} \approx 0.69.$$

This increase in investment can also generate a higher payoff to the decision-maker. To make the comparison, note that exaggeration in the base case can only be better if investment is higher, which happens when $\rho < 0.69 < 8/9$. Hence, we need only compare the payoffs for low values of ρ . Comparing these payoffs yields that exaggeration with a more severe conflict of interest is preferred whenever:

$$1 - \left(1 - \frac{2\rho}{\rho+4}\right)^2 < \frac{19}{12} \frac{\sqrt{2\rho}}{4} \iff \rho < \hat{\rho} \approx 0.504.$$

Given this, if ρ is sufficiently small, the payoff to the decision-maker is higher when there is no monitoring and there exists a more severe conflict of interest. In this case, preference alignment actually decreases the decision-maker's surplus.

3.4 Uninformative Reporting

One assumption that may appear critical to the results in this paper is whether the agents can actually commit to a particular reporting technology without changing it once they observe the outcome τ_i . In what follows, we relax this assumption. Not surprisingly, this leads to a cheap talk scenario in which both agents have a weakly dominant strategy to lie when they get a low value. The decision-maker internalizes this and realizes that the reports are uninformative. However, as

¹⁵The cost parameter ρ is bounded by 4, assuring that the probability q_i is maximized at one.

we show shortly, this leads to an even higher investment in quality. Indeed, the results in the paper imply that the decision-maker typically prefers less information, not more. In the limit, if the decision-maker were to ignore reports altogether, she is strictly better off.¹⁶ Given this, the results in the paper are robust to different timing and modeling assumptions.

Suppose that the reports given by the agents are completely uninformative. Then, the game between the agents is essentially a full-information, all-pay auction with a symmetric, convex cost of bidding, and a bid cap. Each agent simultaneously chooses $q_i \in [0, 1]$. The agent with the higher value of q receives a payoff of one, but both agents lose their investments, $C_i(q_i) = \frac{q_i^2}{\rho_i}$.

Proposition 4. (*Uninformative Reporting*)

i. Suppose that $\rho \geq 2$. Then $q_i = q_j = 1$ is the unique equilibrium.

ii. If $1 < \rho < 2$, then there exists a unique mixed strategy Nash equilibrium in which

$$q_i = \begin{cases} Q \sim F(x) = \frac{x^2}{2-\rho} & \text{with probability } \frac{2}{\rho} - 1 \\ 1 & \text{with probability } 2(1 - \frac{1}{\rho}) \end{cases}$$

iii. If $\rho \leq 1$, there exists a unique mixed strategy Nash equilibrium in which

$$q_i \sim F(x) = \frac{x^2}{\rho}.$$

For all ρ , the payoff to the decision-maker is higher with uninformative reporting than with strategic exaggeration or with full monitoring.

This result arises because q is publicly observable and there is no other information to judge the situation. However, it does alleviate the concern that the main findings of this paper are simply special to the specifics of the posed model.

4 Asymmetric Agents

Now, we consider heterogeneous agents. We first start by considering our base model with two agents that have different marginal costs of investing in quality. Following that, we extend the analysis to consider a continuum of types.

¹⁶We show below that uninformative reporting generates a higher payoff for the decision-maker than the equilibrium with exaggerated (but informative) reports when the agents are symmetric. This ranking may reverse when the agents are asymmetric. Analytical results that support this latter finding are available from the authors.

4.1 Two Heterogenous Agents

Let us suppose that the cost of quality for the two agents is such that

$$R_a < \rho_b < \rho_a < 2, \quad (8)$$

where R_a is a constant that is defined analytically in the Appendix.¹⁷ Thus, while one agent has a higher investment cost, the weaker agent's cost is still above a certain threshold, so that the asymmetry is not too large. The following proposition characterizes the equilibrium of the game.

Proposition 5. (*Asymmetric Agents*) *Suppose that (8) holds. Then, there exists an equilibrium with exaggeration and*

$$q_a^* = \frac{\sqrt{2\rho_a(\rho_a + \rho_b)\sqrt{\rho_a\rho_b} - 4\rho_a^2\rho_b}}{2(\rho_a - \rho_b)} \quad q_b^* = \sqrt{\frac{\rho_b}{\rho_a}}q_a^*. \quad (9)$$

Further,

$$\frac{q_b^*}{\rho_b} > \frac{q_a^*}{\rho_a}. \quad (10)$$

According to Proposition 5, $q_b^* < q_a^*$, which is not surprising given that $\rho_b^* < \rho_a^*$. Based on our characterization in Proposition 1, agent a will be more inclined than the weaker agent b to exaggerate his performance at $t = 1$. However, this has an interesting effect on both agents at $t = 0$. Higher expected exaggeration leads agent a to invest more in quality at $t = 0$, which is consistent with our previous results. However, agent b has an even higher relative incentive to increase quality due to this heightened competition when exaggeration is present.

To see this, let us compare the ratio of each agent's quality choice with exaggeration q_i^* to their choice under full monitoring $\frac{\rho_i}{4}$.

$$\frac{q_a^*}{\frac{\rho_a}{4}} < \frac{q_b^*}{\frac{\rho_b}{4}} \Rightarrow \frac{q_a^*}{\rho_a} < \frac{\sqrt{\frac{\rho_b}{\rho_a}}q_a^*}{\rho_b} \Rightarrow \frac{\rho_b}{\rho_a} < \sqrt{\frac{\rho_b}{\rho_a}}, \quad (11)$$

which is always the case. Given this, there is a spill-over effect of exaggeration. When the stronger agent will be expected to invest more in quality and exaggerate, this causes the weaker one to work harder. Monitoring may not only be suboptimal because it lowers effort provision, but it may also remove a complementarity between asymmetric agents.

4.2 Continuum of Heterogeneous Agents

Now, consider a continuum of agents who have a marginal cost of quality ρ_i that is distributed according to a continuously differentiable distribution function $F(\cdot)$ on the support $[0, 1]$ with $\mu \equiv E[\rho_i] \leq \frac{1}{2}$. Assume that each agent's cost of quality is $\frac{q_i^2}{2\rho_i}$. The decision-maker has the capacity to allocate the resource to a fraction x of the projects from the population.

¹⁷Setting this lower bound on ρ_b implies an upper bound on the cost of quality for agent b and assures that a pure strategy equilibrium exists.

4.2.1 Fully Informative Benchmark

Depending on the size of x , there are two cases to consider. For small x , the decision-maker chooses a fraction of projects with good reports (i.e., rations the scarce resource to a subset). For larger x , the decision-maker allocates the resource to all high-quality projects and a fraction of lower quality projects.

Proposition 6. (*Full Information*)

i. Suppose that $x < \mu$. Then, the decision-makers's expected payoff is x and each agent's investment in quality is $\sqrt{\frac{x}{\mu}}\rho_i$. Both are increasing in x .

ii. Suppose that $x > \mu$. The decision-maker's payoff is

$$u_d = \left(1 - \frac{1}{2\mu} \left(2\mu - 1 + \sqrt{1 - 4\mu(1-x)}\right)\right) \mu \quad (12)$$

and each agent's investment in quality is

$$q_i = \left[1 - \frac{1}{2\mu} \left(2\mu - 1 + \sqrt{1 - 4\mu(1-x)}\right)\right] \rho_i. \quad (13)$$

Both are decreasing in x .

Figure 2 plots the decision-maker payoff as a function of x for $\mu = \frac{1}{3}$ and $\mu = \frac{1}{2}$. For $x < \mu$, the agents compete vigorously for the scarce resource. As the decision-maker has more capacity, the probability of receiving the resource increases. Given this, agent investment increases and the expected payoff to the decision-maker rises. However, once the resource becomes sufficiently less scarce and lower quality projects will be picked as well, the incentives for the agents to compete relax. As x gets large, agent investment decreases and the expected payoff to the decision-maker decreases. In what follows, we compare this outcome under full information to what arises under decreased transparency.

4.2.2 Equilibria with (Possibly) Less Transparency

The decision-maker is still willing to allocate resources to a fraction x of the agents. But, since there is imperfect information, there will now exist a threshold belief G such that each agent only receives the resource if the decision-maker's posterior belief about his quality $g_i = \frac{q_i}{q_i + \theta_i(1-q_i)}$ surpasses the threshold. In any equilibrium, the measure of projects at or above G equals x . Note that at G , all projects must also be accepted, because otherwise an epsilon deviation would generate a posterior belief marginally above G and lead to acceptance with probability one. Hence, rationing can occur in equilibrium only if $G = 1$, which reduces to the previous case.

The following proposition characterizes the equilibrium for $\rho_i \sim U[0, 1]$.

Proposition 7. *Uniform Distribution and Exaggeration*

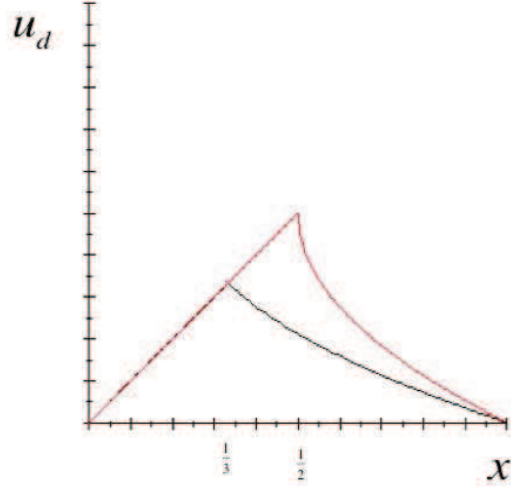


Figure 2: THE DECISION MAKER'S PAYOFF FOR $\mu = 1/2$ (RED) AND $\mu = 1/3$ (BLACK) AS A FUNCTION OF THE RESOURCE'S ABUNDANCE, x .

- i. Suppose that $x < \frac{1}{2}$. Then, there is fully-informative reporting, decision-makers's payoff is x , and each agent's investment in quality is $\sqrt{\frac{x}{\mu}}\rho_i$.*
- ii. Suppose that $x > \frac{1}{2}$. Then, there is exaggeration and the decision-maker's payoff is*

$$x\sqrt{2(1-x)}, \tag{14}$$

which is strictly higher than with the fully-informative benchmark. Agents with $\rho_i < 2(1-x)$ invest $q_i = \frac{\rho_i}{\sqrt{2(1-x)}}$ whereas the remainder invest $q_i = \sqrt{2(1-x)}$.

According to Proposition 7, when resources are sufficiently scarce (i.e., $x < \frac{1}{2}$), truth-telling is part of the equilibrium. The decision-maker's payoff and the investment in quality is the same as in the fully informative benchmark. However, when the resource is less scarce, the decision-maker's payoff is higher without monitoring. As in Section 3, this arises because of a complementarity between exaggeration and quality. In Figure 3, we superimpose the decision-maker's payoff on the graph in Figure 2 with $\mu = \frac{1}{2}$. Below $x = \frac{1}{2}$, the decision-maker's payoff is the same. Above $x = \frac{1}{2}$, the decision-maker's payoff is larger with exaggeration.

Equally as interesting is the optimal behavior of the agents when resources are less scarce. High-ability agents put in sufficient effort, but give completely uninformative reports to the decision-maker. Lower ability agents exert less effort, but offer more honesty to compensate. This equilibrium outcome has implications for the industrial organization of financial markets. For example,

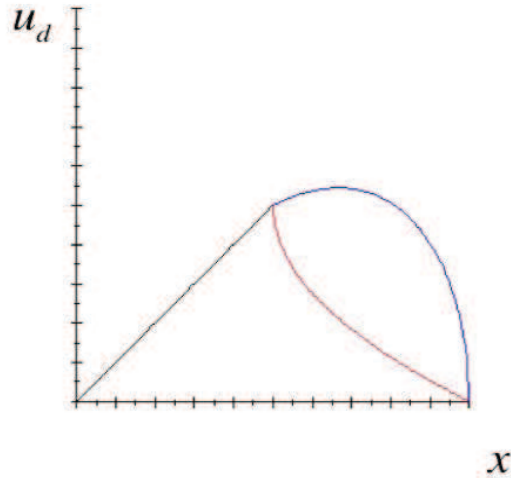


Figure 3: THE DECISION MAKER'S PAYOFF AS A FUNCTION OF THE RESOURCE'S ABUNDANCE, x UNDER FULL INFORMATION AND FINANCIAL EXAGGERATION. FOR $x < 1/2$, THESE ARE IDENTICAL. FOR $x > 1/2$ THE PAYOFF WITH FINANCIAL EXAGGERATION (BLUE) IS HIGHER THAN UNDER FULL INFORMATION (RED).

consider skill and transparency in the investment management industry. The model would predict that high skill agents would form less transparent funds, whereas lower skilled agents would work at more transparent funds. Indeed, this is consistent with the co-existence of hedge funds and mutual funds.

5 Applications and Related Literature

There are many empirical settings in which decision-makers are faced with the challenge that we study in this paper and need to be skeptical about the information that they receive from people who themselves are affected by this information (Milgrom and Roberts, 1986). For example, this arises when private equity (PE) fund managers compete for capital from investors. Some PE fund managers have been shown to manipulate their reported net asset values (NAV's) when they market their funds to investors. Brown, Gredil, and Kaplan (2015) find that some PE fund managers inflate NAV's when investors choose whether to commit funds to subsequent funds managed by the same firm. Likewise, Barber and Yasuda (2016) show that some general partners time interim fundraising to coincide with periods in which NAV's have been artificially managed. The authors show that these GP's report performance peaks during fundraising and experience erosions in performance afterwards.

The economic forces in our paper also apply to agency conflicts when entrepreneurs compete

for venture capital (e.g., Sahlman, 1990). These may be managed strategically with sequential investments (Gompers, 1995), syndication (Lerner, 1994), or convertible securities. However, this literature has focused on conflicts that arise after an entrepreneur develops an opportunity and on conflicts that involve two parties: an investor and an entrepreneur. Our paper adds to this literature because we address the conflicts that may arise *before* development occurs, and also analyze how a venture capitalist optimally chooses among multiple opportunities. As we show, surprisingly, in some cases a venture capitalist may wish to commit to forego some future control in order to increase the competition from potential suitors. To our knowledge, we are the first to consider this implication.

Our analysis also applies to internal capital markets in corporations. Starting with Williamson (1975) and Donaldson (1984) and then later with Stein (1997), it has long been recognized that agents who run divisions within firms compete for resources as top management seeks to allocate them to the best opportunities.¹⁸ As Stein (1997) points out, “there is a tendency for these agents to overstate their investment prospects”. In turn, this may lead to efficiency losses as in Scharfstein and Stein (2000) who analyze divisional rent-seeking. Our paper contributes to this literature by taking a step back and considering the level of competition that takes place in the first place. As we show, allowing exaggeration actually heightens the intensity of competition. So, if the CEO of a firm were to fully monitor his divisional managers, which may be reasonable in some cases, his allocation decisions would be more accurate and efficient, but his own personal payoff would be lower. Further, if the CEO were faced with the problem of getting a weaker division to not give up because of their relative inferiority, allowing exaggeration may help to improve effort provision.

Last, our work applies to a large literature on earnings management and reporting quality. As Beyer, Cohen, Lys and Walther (2010) note, accounting reporting plays two roles: it allows capital providers to evaluate return potential before they invest and it allows them to monitor the use of their capital *ex post*. Accordingly, reporting quality takes a central role because information asymmetry and agency problems frequently arise in corporate settings. For example, CEO pay is directly linked to earnings management (e.g., Bergstresser and Philippon, 2006): earnings management is more pronounced when more of the CEO’s pay is tied to stock performance and during years of high accruals, CEO’s exercise unusually large numbers of options and sell large quantities of stock. When earnings reporting takes place, the Revelation Principle frequently fails to hold (Arya, Glover, and Sunder, 1998) and reporting quality may vary cross-sectionally as well as in the time series (Dechow, Ge, and Schrand, 2010).

Our paper is related to theoretical work on information production and disclosure. However, our approach is distinct from what is typically considered in the literature on Bayesian persuasion (Kamenica and Gentzkow, 2011; Boleoslavsky and Cotton, 2015). Typically in that literature, agents choose the process by which public evidence is generated, with minimal restrictions on the structure of possible signals. In contrast, in our model agents choose the level of access to auditors, whose sole role is to detect financial exaggeration, whereby a low quality project is reported as good. As such, our setting is more natural for studying issues related to credibility and reporting in a

¹⁸As such, the investment of the divisions is strongly related to the cash flows generated by the rest of the firm (Lamont, 1996; Shin and Stulz, 1996).

financial context. ¹⁹

A theoretical contribution of our paper is that we simultaneously consider two types of incentives faced by agents in a competitive environment: the incentive for agents to invest in improving the distribution of project quality and the incentive to make exaggerated reports of realized project quality. This distinguishes our work from several existing, but related papers. For example, it is well established in the career concerns literature that more monitoring can discourage effort (e.g. Dewatripont, et al 1999 and Holmstrom 1999). Similarly, Taylor and Yildirim (2011) and Coate and Loury (1993) consider how decision maker access to information about an agents type affects the agents decision to invest in quality. In the contracting literature, it is also well established that a principal may want to commit to imperfect monitoring technologies, as doing so leads to more favorable actions taken by agents (e.g. Cremer 1995, Sappington 1986, 1991). Along this same line, our work contributes to a large body of work that implies that people may be better off ignoring information or by committing not to collect it (e.g. Hirshleifer 1971; Morris and Shin 2002).²⁰

Another large literature has focused on a biased agents incentive to report a verifiable state that has already been realized – for example, product quality or a firms fundamental value - without explicitly considering incentives for agents to invest ex ante to improve the state. The early strand of literature (Grossman and Hart 1980; Grossman 1981; Milgrom 1981; Milgrom and Roberts 1986) argues that those with relatively good news will always prefer to disclose it, inducing a cascade in which all news is revealed. Subsequent literature (e.g. Verrechia 1983; Dye 1985; Matthews and Postlewaite 1985) establishes a variety of conditions under which full disclosure fails. Incentives to disclose information in a competitive environment are analyzed by Carlin, Davies, and Iannacone (2012), who find that competition may, paradoxically, reduce incentives for agents to disclose relevant information. Che and Kartik (2009) consider an agent’s incentive to search for verifiable information, which he may subsequently report or withhold. In addition to the difference mentioned previously, this literature also assumes that information is verifiable: the agent may withhold a report of the state, but if he sends one it must be true. In contrast, our analysis is built around the idea of exaggerated reporting: the agent always reports good news in the good state, but he may choose a reporting policy that sometimes reports good news in the bad state.

6 Conclusion

For decades, financial economists have focused on ways to mitigate the agency problems that arise between shareholders and managers, investors and entrepreneurs, and lenders and borrowers.

¹⁹Boleslavsky and Cotton (2015) develop a general Bayesian persuasion model of school competition. Like our model, Boleslavsky and Cotton (2015) offers the opportunity for schools to invest in quality and then choose grading policies. But, schools are given much more discretion in altering signals, while in the current paper auditors only have one role: to curb exaggeration. This simplification allows for analysis beyond work by Boleslavsky and Cotton (2015). In particular, we consider limited conflict of interest between the agents and the decision-maker, heterogeneous agents, and an industry structure where a continuum of agents compete for resources.

²⁰See Bikhchandani, Hirshleifer, and Welch (1992), Teoh (1997), Burguet and Vives (2000), Angeletos and Pavan (2007), and Amador and Weill (2012), among others.

Whether due to adverse selection or moral hazard, agency conflicts are ubiquitous in corporate finance as an important determinant of firm size, capital structure, corporate governance, and firm value. Generally, the field has viewed perfect monitoring as a panacea, as long as it is not too costly.

In this paper, we show that this is not the complete story. If agents forecast that they will have the opportunity to hide information or act in their own self-interest, it is possible that they will invest more effort to develop strong projects when they anticipate this. In our model, agents compete for resources, which in some cases leads them to exaggerate the outcome of their projects. Knowing this, they work harder to win, which benefits the decision-maker who allocates the capital. In such cases, having less information may benefit the decision-maker.

Our findings, then, can be viewed as a more general contribution. Indeed, one can think of many settings to apply this analysis besides financial markets: marriage markets, education, litigation, and elections, to name a few. Investigating these settings is the subject of future research.

References

- Alonso, Ricardo and Odilon Camara 2014. Bayesian Persuasion With Heterogeneous Priors. Forthcoming, *Journal of Economic Theory*.
- Alonso, Ricardo and Odilon Camara 2015. Persuading Voters. Forthcoming, *American Economic Review*.
- Amador, Manuel, and Pierre-Olivier Weill. 2012. Learning from Private and Public Observations of Others Actions. *Journal of Economic Theory* 147: 910-940.
- Angeletos, George-Marios, and Alessandro Pavan. 2007. Efficient Use of Information and Social Value of Information. *Econometrica* 75: 1103-1142.
- Arya, Anil, Glover, Jonathan, and Sunder, Shyam. 1998. Earnings Management and the Revelation Principle. *Review of Accounting Studies* 3: 7-34.
- Barber, Brad, and Yasuda, Ayako. 2016. Interim Fund Performance and Fundraising in Private Equity. Working paper, University of California at Davis.
- Bergstresser, Daniel, and Thomas Philippon. 2006. CFO Incentives and Earnings Management. *Journal of Financial Economics* 80: 511-529.
- Beyer, Anne, Daniel A. Cohen, Thomas Z. Lys, and Beverly R. Walther. 1992. The Financial Reporting Environment: Review of the Recent Literature. *Journal of Accounting and Economics* 50: 296-343.
- Bikhchandani, Sushil, David Hirshleifer, and Ivo Welch. 1992. A Theory of Fads, Fashion, Custom, and Cultural Change as Informational Cascades. *Journal of Political Economy* 100: 992-1026.
- Boleslavsky, Raphael, and Christopher Cotton. 2015. Grading Standards and Education Quality. *American Economic Journal: Microeconomics* 7: 248-279.
- Boleslavsky, Raphael, and Christopher Cotton. 2014. Limited Capacity in Project Selection: Competition Through Evidence Production. *mimeo, University of Miami*.
- Bookstaber, Richard. 2003. Hedge Fund Existential. *Financial Analysts Journal* 59: 19-23.
- Brocas, I. and Carrillo, J.D. 2007. Influence through Ignorance. *RAND Journal of Economics* 38: 931-947.
- Brocas, I., Carrillo, J.D., and Palfrey, T. 2012. Information Gatekeepers: Theory and Experimental Evidence. *Economic Theory* 51: 649-676.

- Brown, Greg, Gredil, Oleg, and Steven Kaplan. 2015. Do Private Equity Funds Game Returns?. Working paper, University of Chicago.
- Brown, Stephen, and William Goetzmann. 2003. Hedge Funds with Style. *Journal of Portfolio Management* 29: 101-112.
- Burguet, Roberto, and Xavier Vives. 2000. Social Learning and Costly Information Acquisition. *Economic Theory* 15: 185-205.
- Carlin, Bruce, Davies, Shaun, and Iannaccone, Andrew. 2012. Competition, Comparative Performance, and Market Transparency. *American Economic Journal: Microeconomics* 4: 202-237, 2012.
- Che, Yeon-Koo, and Kartik, Navin. 2009. Opinions as Incentives. *Journal of Political Economy* 117:815-860.
- Coate, Stephen, and Loury, Glenn. 1993. Will Affirmative-Action Policies Eliminate Negative Stereotypes?. *American Economic Review* 83: 1220-1240.
- Cremer, J. 1995 Arms Length Relationships. *Quarterly Journal of Economics* 110: 275-295.
- Dechow, Patricia, Weili Ge, and Catherine Schrand. 2010. Understanding Earnings Quality: A Review of the Proxies, Their Determinants, and Their Consequences. *Journal of Accounting and Economics* 50: 344-401.
- Dewatripont, M., Jewitt, I. and Tirole, J. 1999. The economics of career concerns, Part I: Comparing information structures. *Review of Economic Studies* 66: 183-198.
- Donaldson, Gordon. 1984. Managing Corporate Wealth. Praeger Publishers, New York.
- Dye, Ronald A. (1985). Disclosure of Nonproprietary Information. *Journal of Accounting Research* 23, 123-145.
- Fung, William, and David Hsieh, 1997. Empirical Characteristics of Dynamic Trading Strategies: The Case of Hedge Funds. *Review of Financial Studies* 10: 275-302.
- Gentzkow, Matthew and Emir Kamenica. 2015. Competition in Persuasion. Working Paper, University of Chicago.
- Gervais, Simon, and Gunter, Strobl. 2016. The Industrial Organization of Money Management. Working paper, Duke University.
- Gompers, Paul. 1995. Optimal Investment, Monitoring, and the Staging of Venture Capital. *Journal of Finance* 50: 1461-1489.

- Grossman, Sanford J. (1981). The Informational Role of Warranties and Private Disclosure about Product Quality. *Journal of Law and Economics* 24, 461-483.
- Grossman, S. J. and Hart, O. D. (1980). Disclosure Laws and Takeover Bids. *Journal of Finance* 35, 323-334.
- Gul, Faruk and Pesendorfer, Wolfgang. (2012). The War of Information. *Review of Economic Studies* 79, 707-734.
- Hirshleifer, Jack. 1971. The Private and Social Value of Information and the Reward to Inventive Activity. *American Economic Review* 61: 561-574.
- Holmstrom, B. 1999. Managerial Incentive Problems: A Dynamic Perspective. *Review of Economic Studies* 66: 169-182.
- Kamenica, Emir, and Gentzkow, Matthew. 2011. Bayesian Persuasion. *American Economic Review* 101: 2590-2615.
- Kolotin, Anton, and Ming Li and Tymofiy Mylovanov and Andriy Zapechelnuk. 2015. Persuasion of a Privately Informed Receiver. Working Paper, University of Pittsburgh.
- Koski, Jennifer Lynch, and Jeffrey Pontiff. 1999. How Are Derivatives Used? Evidence from the Mutual Fund Industry. *Journal of Finance* 54: 791-816.
- Lerner, Josh. 1994. The Syndication of Venture Capital Investments. *Financial Management* 23: 16-27.
- Matthews, Steven, and Postlewaite, Andrew. 1985. Quality Testing and Disclosure. *RAND Journal of Economics* 16: 328-340.
- McCloskey, Donald, and Klamler, Arjo. 1995. One Quarter of GDP is Persuasion. *American Economic Review, Papers and Proceedings of the Hundredth and Seventh Annual Meeting of the American Economic Association* pp. 191-195.
- Merkel-Davies, Doris and Brennan, Niamh. 2007. Discretionary Disclosure Strategies in Corporate Narratives: Incremental Information or Impression Management?. *Journal of Accounting Literature* 27: 116-196.
- Milgrom, Paul R. (1981). Good News and Bad News: Representation Theorems and Applications. *The Bell Journal of Economics* 12, 380-391.
- Milgrom, Paul, and Roberts, John. 1986. Relying on the Information of Interested Parties. *RAND Journal of Economics* 17: 18-32.

- Morris, Stephen, and Hyun Song Shin. 2002. Social Value of Public Information. *American Economic Review* 92: 1521-1534.
- Sahlman, W. 1990. The Structure and Governance of Venture Capital Organizations. *Journal of Financial Economics* 27: 473-524.
- Scharfstein, David, and Stein, Jeremy. 2000. The Dark Side of Internal Capital Markets: Divisional Rent-Seeking and Inefficient Investment. *Journal of Finance* 55: 2537-2564.
- Sappington, David. 1986. Commitment to Regulatory Bureaucracy. *Information Economics and Policy* 2: 243-258.
- Sappington, David. 1991. Incentives in principal-agent relationships. *The Journal of Economic Perspectives* 5: 45-66.
- Stein, Jeremy. 1997. Internal Capital Markets and the Competition for Corporate Resources. *Journal of Finance* 52: 111-133.
- Taneva, Ina. 2015. Information Design. Working Paper, University of Edinburgh.
- Taylor, Curtis, and Yildirim, Huseyin. 2011. Subjective Performance and the Value of Blind Evaluation. *Review of Economic Studies* 78: 762-794.
- Teoh, Siew Hong. 1997. Information Disclosure and Voluntary Contributions to Public Goods. *RAND Journal of Economics* 28: 385-406.
- Tullock, G. 1980. Efficient Rent Seeking. In: Buchanan, J., Tollison, R., Tullock, G. (eds.) *Toward a Theory of the Rent-Seeking Society*. College Station: Texas A&M University Press.
- Verrecchia, Robert. 1983. Discretionary Disclosure. *Journal of Accounting and Economics* 5: 179-194.
- Williamson, Oliver E. 1975. *Markets and Hierarchies: Analysis and Antitrust Implications*. Collier Macmillan Publishers, Inc. New York.

Appendix A

Proof of Proposition 1.

The proof follows from Lemmas A1-A3. At the reporting stage, investments (q_a, q_b) with $q_a \geq q_b$ are taken as given, because these were chosen in the previous stage. Agents simultaneously choose (θ_a, θ_b) , their level of exaggeration. The posterior belief that a project with a bad report is high quality is 0, since no high quality projects receive bad reports. The posterior belief, g_i , that project i is high quality given a good report ranges from $g_i = q_i$ when $\theta_i = 1$ to $g_i = 1$ when $\theta_i = 0$. For all levels of report inflation $\theta_i \in [0, 1]$, Bayes' rule provides a one-to-one mapping between θ_i and g_i , with $g_i = q_i / (q_i + (1 - q_i)\theta_i)$, and $\partial g_i / \partial \theta_i < 0$. When characterizing the equilibrium of the reporting stage, we work with the choice of g_i directly for convenience. If an agent chooses g_i , the probability with which the posterior is equal to g_i is equal to q_i / g_i . Therefore the expected payoff of agent i is given by:

$$u_i(g_i, g_j) = \begin{cases} \frac{q_i}{g_i}(1 - \frac{q_j}{g_j}) + \frac{1}{2}(1 - \frac{q_i}{g_i})(1 - \frac{q_j}{g_j}) & \text{if } g_i < g_j \\ \frac{q_i}{g_i} + \frac{1}{2}(1 - \frac{q_i}{g_i})(1 - \frac{q_j}{g_j}) & \text{if } g_i > g_j \\ \frac{q_i}{g_i}(1 - \frac{1}{2}\frac{q_j}{g_j}) + \frac{1}{2}(1 - \frac{q_i}{g_i})(1 - \frac{q_j}{g_j}) & \text{if } g_i = g_j \end{cases}$$

Lemma A1. *If $q_b \geq 1 - q_a$ then the unique Nash equilibrium of the second stage game is $g_a = g_b = 1$.*

Proof. If agent j chooses $g_j=1$, then the best possible deviation from $g_i = 1$ is $g_i = q_i$. By choosing this deviation, agent i assures that if the other agent's project receives an L and is thus revealed to be low-type, agent i payoff is 1. Thus, $g_a = g_b = 1$ is a Nash equilibrium if and only if for each agent i

$$q_i(1 - \frac{q_j}{2}) + \frac{1}{2}(1 - q_i)(1 - q_j) \geq 1 - q_j \leftrightarrow q_i + q_j \geq 1$$

Thus, the equilibrium of the second stage is fully revealing if and only if $q_b \geq 1 - q_j$ ■

Lemma A2. *If $\frac{1}{2}(1 - q_a) < q_b < 1 - q_a$ then the mixed strategy Nash equilibrium is as follows:*

$$g_a = \begin{cases} q_a & \text{with prob } 1 - \phi_1 - \phi_2 = 1 - \frac{2q_b}{q_b + q_a} \\ G \sim F(x) = \frac{x^2 - q_a^2}{4(1 - q_b)(1 - q_a - q_b)} & \text{with prob } \phi_1 = (\frac{2q_b}{q_b + q_a})(1 - \frac{q_a + 2q_b - 1}{q_b(q_a + q_b)}) \\ 1 & \text{with prob } \phi_2 = (\frac{2q_b}{q_b + q_a})\frac{q_a + 2q_b - 1}{q_b(q_a + q_b)} \end{cases}$$

$$g_b = \begin{cases} G \sim F(x) = \frac{x^2 - q_a^2}{4(1-q_b)(1-q_a-q_b)} & \text{with prob } \lambda = 1 - \frac{q_a + 2q_b - 1}{q_b(q_a + q_b)} \\ 1 & \text{with prob } 1 - \lambda = \frac{q_a + 2q_b - 1}{q_b(q_a + q_b)} \end{cases}$$

Proof. Note, all probabilities are positive and sum to one, and the density of G is given by $f(x) = x/(2(1-q_b)(1-q_a-q_b))$. The support of G is $[q_a, 2-q_a-2q_b]$, and for the parameters of the proposition, the top of the support is in $[0, 1]$. To show that the proposed strategies constitute a mixed strategy Nash equilibrium, we verify that each agent is indifferent among all pure strategies inside the support and that no pure strategy outside the support delivers a better expected payoff against the mixed strategy of the other player.²¹

Agent b 's expected payoff from pure strategy p in the support of its mixed strategy:

$$u_b = \begin{cases} \frac{q_b}{p}(1 - \phi_1 \int_p^{2-q_a-2q_b} f(s) \frac{q_a}{s} ds - \phi_2 q_a) + \frac{1}{2}(1 - E[\frac{q_a}{g_a}])(1 - \frac{q_b}{p}) & \text{if } p \in [q_a, 2 - q_a - 2q_b] \\ q_b(1 - \frac{\phi_2 q_a}{2}) + \frac{1}{2}(1 - E[\frac{q_a}{g_a}])(1 - q_b) & \text{if } p = 1 \end{cases}$$

Substitution and simplification gives:

$$u_b = \begin{cases} \frac{q_b}{p} \frac{q_b^2 + pq_a}{(q_a + q_b)^2} + \frac{1}{2} \left(\frac{2q_b^2}{(q_a + q_b)^2} \right) (1 - \frac{q_b}{p}) & \text{if } p \in [q_a, 2 - q_a - 2q_b] \\ q_b \left(1 - \frac{q_a}{2} \left(\frac{2q_b}{q_b + q_a} \right) \frac{q_a + 2q_b - 1}{q_b(q_a + q_b)} \right) + \frac{1}{2} \left(\frac{2q_b^2}{(q_a + q_b)^2} \right) (1 - q_b) & \text{if } p = 1 \end{cases}$$

Further simplification gives $u_b = q_b/(q_a + q_b)$ in both cases. Thus all pure strategies in the support of b 's mixed strategy give the same expected payoff. Choosing any pure strategy $\hat{g} \in (2 - q_a - 2q_b, 1)$ is dominated by choosing $g = 2 - q_a - 2q_b$, because the probability of winning is the same for both pure strategies, but g is more likely to generate a good realization. It is also straightforward to verify that choosing q_b is dominated by the equilibrium mixed strategy. Thus all pure strategies in the support of b 's mixed strategy give the same expected payoff against a 's mixed strategy, and no strategy outside the support gives b a higher payoff. Thus, b 's mixed strategy is a best response to a 's mixed strategy.

A symmetric analysis applies to agent a . Simplifying the utility function gives $u_a = q_a/(q_a + q_b)$, and by a symmetric argument as above, one can show that a mixed strategy is a best response to b 's mixed strategy. ■

²¹We follow a similar approach in the proof to the next lemma as well. Alternative derivation of the equilibrium from the indifference conditions, which also shows uniqueness, is available for both equilibrium cases upon request.

Lemma A3. If $q_b \leq \frac{1}{2}(1 - q_a)$ then the mixed strategy Nash equilibrium is as follows:

$$g_a = \begin{cases} q_a & \text{with probability } 1 - \phi = 1 - \frac{2q_b}{q_b + q_a} \\ G \sim F(x) = \frac{x^2 - q_a^2}{4q_b(q_a + q_b)} & \text{with probability } \phi = \frac{2q_b}{q_b + q_a} \end{cases}$$

$$g_b = G \sim F(x) = \frac{x^2 - q_a^2}{4q_b(q_a + q_b)}$$

Proof. Note, all probabilities are positive and sum to one, and the density of G is given by $f(x) = x/(2q_b(q_a + q_b))$. The support of G is $[q_a, q_a + 2q_b]$, and for the parameters of the proposition, the top of the support is in $[0, 1]$. As before, we establish indifference between all pure strategies played with positive probability, and show that no pure strategy outside of the mixing distribution results in higher expected payoffs.

Consider agent b 's expected payoff from a pure strategy $p \in [q_a, q_a + 2q_b]$ in the support of its mixed strategy:

$$u_b = \frac{q_b}{p} (1 - \phi \int_p^{q_a + 2q_b} f(s) \frac{q_a}{s} ds) + \frac{1}{2} (1 - E[\frac{q_a}{g_a}])(1 - \frac{q_b}{p})$$

Substitution and simplification gives:

$$u_b = \frac{q_b}{p} (1 - \frac{2q_b}{q_a + q_b} q_a \frac{q_a + 2q_b - p}{2q_b(q_a + q_b)}) + \frac{1}{2} (1 - \frac{2q_b}{q_a + q_b} \frac{q_a}{(q_a + q_b)} - (1 - \frac{2q_a}{q_a + q_b}))(1 - \frac{q_b}{p})$$

Further simplification gives $u_b = q_b/(q_a + q_b)$. Following the same argument as in the proof to the previous lemma, one can show that b mixed strategy is a best response to a 's mixed strategy.

Consider agent a 's expected payoff from a pure strategy p in the support of its mixed strategy:

$$u_a = \frac{q_a}{p} (1 - \int_p^{q_a + 2q_b} f(s) \frac{q_b}{s} ds) + \frac{1}{2} (1 - E[\frac{q_b}{g_a}])(1 - \frac{q_a}{p}) \quad \text{if } p \in [q_a, q_a + 2q_b]$$

Substitution and simplification gives $u_a = q_b/(q_a + q_b)$. Following the same argument as before, one can show that a mixed strategy is a best response to b 's mixed strategy. ■

Proof of Proposition 2.

Proof. Consider a symmetric pure strategy Nash equilibrium $q_i = q_j = q \leq 1/2$. Because $q \leq 1/2$, $q \leq 1 - q$. Therefore, over the region $q_i \leq 1 - q$, selecting $q_i = q$ must be optimal. Hence,

a necessary condition for (q, q) to constitute a Nash equilibrium with $q \leq 1/2$ is the following stationarity condition:

$$\left. \frac{d}{dq_i} \left(\frac{q_i}{q_i + q} - \frac{q_i^2}{\rho} \right) \right]_{q_i=q} = 0 \iff 2q_i^3 + 4qq_i^2 + 2q^2q_i - q\rho \Big|_{q_i=q} = 0 \iff 8q^3 - q\rho = 0 \quad (\text{A1})$$

Note that over the region $q_i < 1 - q$ the payoff function is strictly concave in q_i , and thus this first order condition defines a maximum over this region. Because $q = 0$ cannot be an equilibrium, the only positive value of q satisfying this necessary condition that could arise in equilibrium is

$$q^* = \frac{\sqrt{2\rho}}{4}$$

To be consistent with the initial assumption that $q \leq 1/2$, it must be that $\rho \leq 2$. Thus, for $\rho \leq 2$ selecting q^* as a response to q^* dominates any other possible value of $q_i < 1 - q^*$. To show that investment level q^* constitutes the unique symmetric equilibrium, profitable deviations above $1 - q^*$ must be ruled out. Note that for $q_i > 1 - q^*$, the derivative of agent i 's payoff function is

$$\frac{d}{dq_i} \left(\frac{1}{2}(1 + q_i - q^*) - \frac{q_i^2}{\rho} \right) = \frac{1}{2} - \frac{2q_i}{\rho}$$

For $q_i > 1 - q^*$

$$\frac{1}{2} - \frac{2q_i}{\rho} < \frac{1}{2} - \frac{2(1 - q^*)}{\rho} = \frac{\rho + \sqrt{2\rho} - 4}{2\rho} \leq 0 \text{ for } \rho \leq 2$$

Hence, when $\rho \leq 2$, no deviations above $1 - q^*$ are profitable.

Next, consider a symmetric pure strategy equilibrium $q_i = q_j = q > 1/2$. Because $q > 1/2$, $q > 1 - q$. Therefore, over the region $q_i > 1 - q$, selecting $q_i = q$ must be optimal. Hence, a necessary condition for (q, q) to constitute a Nash equilibrium with $q > 1/2$ is the following stationarity condition:

$$\left. \frac{d}{dq_i} \left(\frac{1}{2}(1 + q_i - q_j) - \frac{q_i^2}{\rho} \right) \right]_{q_i=q} = 0 \iff \frac{1}{2} = \frac{2q}{\rho} \quad (\text{A2})$$

Note that over the region $q_i > 1 - q$ the payoff function is strictly concave in q_i , and thus this first order condition defines a maximum over this region. Thus, the only positive value of q satisfying this necessary condition that could arise in equilibrium is

$$q^* = \frac{\rho}{4}$$

To be consistent with the initial assumption that $q > 1/2$, it must be that $\rho > 2$. Thus, for $\rho > 2$ selecting q^* as a response to q^* dominates any other possible value of $q_i > 1 - q^*$. To show that investment level q^* constitutes the unique symmetric equilibrium, profitable deviations below $1 - q^*$ must be ruled out. Note that for $q_i < 1 - q^*$, the agent's payoff function is strictly concave, and thus has no more than one peak. The derivative of agent i 's payoff function is

$$\frac{d}{dq_i} \left(\frac{q_i}{q_i + q^*} - \frac{q_i^2}{\rho} \right) = \frac{q^*}{(q_i + q^*)^2} - \frac{2q_i}{\rho}$$

For $q_i < 1 - q^*$ the derivative is larger than at $q_i = 1 - q^*$. Hence, for $q_i < 1 - q^*$,

$$\frac{q^*}{(q_i + q^*)^2} - \frac{2q_i}{\rho} > q^* - \frac{2(1 - q^*)}{\rho} > 0 \text{ for } \rho > 2$$

Hence, when $\rho > 2$, no deviations below $1 - q^*$ are profitable. ■

Proof of Corollary 1.

Proof. In the fully-revealing benchmark, $q^* = \frac{\rho}{4}$. When exaggeration is allowed, $q^* = \frac{\sqrt{\rho}}{2\sqrt{2}}$.

$$q^* = \frac{\sqrt{\rho}}{2\sqrt{2}} > q^* = \frac{\rho}{4},$$

iff

$$\rho < 2.$$

■

Proof of Proposition 3.

Proof. First, we begin with the decision-maker's payoff for symmetric investments $q_a = q_b = q$. Because we consider symmetric agents, the equilibrium of the investment stage will also be symmetric. This calculation will therefore facilitate the comparison of decision-maker payoff under exaggeration to the decision-maker payoff in the no exaggeration benchmark. Given the posterior belief realizations of (g_a, g_b) generated by the equilibrium mixed strategies, define $g_m = \max[g_a, g_b]$

and $g_n = \min[g_a, g_b]$. The decision-maker's expected payoff for a particular combination of (g_m, g_n) is given by

$$u_p(g_m, g_n) = g_m \frac{q}{g_m} + (1 - \frac{q}{g_m}) g_n \frac{q}{g_n} = q(2 - \frac{q}{g_m}) \quad (\text{A3})$$

If the agent with the less-inflated disclosure policy, and higher posterior g_m , generates a good report, then the decision-maker will accept that project, giving the decision-maker a payoff of g_m . This event occurs with probability $\frac{q}{g_m}$ (the first term in expression (A3)). If the project with higher g_i generates a bad report, then the decision-maker knows for sure that the project is low quality. In this instance, if the more-inflated project generates a good report, (probability $\frac{q}{g_n}$) the decision-maker accepts it, giving the decision-maker an expected payoff of g_n . Thus, the decision-maker's ex ante expected payoff in this equilibrium is equal to

$$u_p^* = E[q(2 - \frac{q}{g_m})] = q(2 - qE[\frac{1}{g_m}]) \quad (\text{A4})$$

In order to calculate the decision-maker's ex ante expected payoff in this equilibrium, we need to determine the expected value of the inverse of the maximum order statistic from the equilibrium mixed strategies, $E[\frac{1}{g_m}]$. We consider three cases in turn:

Case I: $q \leq \frac{1}{3}$. When $q_a = q_b = q \leq \frac{1}{3}$, the equilibrium mixed strategy of each agent is to randomize over support $[q, 3q]$ using distribution function $F(x) = \frac{x^2 - q^2}{8q^2}$ with corresponding density $f(x) = \frac{x}{4q^2}$. The expectation in question, $E[\frac{1}{g_m}]$, is therefore²²

$$\int_q^{3q} 2(\frac{1}{x})(\frac{x^2 - q^2}{8q^2}) \frac{x}{4q^2} dx = \frac{5}{12q}$$

Thus, when $q \leq 1/3$ the decision-maker's ex ante equilibrium expected payoff is

$$q(2 - q\frac{5}{12q}) = (\frac{19}{12})q$$

Case II: $\frac{1}{3} \leq q \leq \frac{1}{2}$. Here, the equilibrium mixed strategy of each agent is as follows. With probability $\phi = \frac{3q-1}{2q^2}$ choose $g = 1$. With probability $1 - \phi$ randomize over support $[q, 2 - 3q]$

²²The density of the maximum order statistic g_m is $2f(x)F(x)$

using distribution function $F(x) = (x^2 - q^2)/(4(1 - q)(1 - 2q))$ with corresponding density $f(x) = x/(2(1 - q)(1 - 2q))$. Thus, $E[\frac{1}{g_m}]$ equals

$$1 - (1 - \phi)^2 + (1 - \phi)^2 \int_q^{2-3q} 2\left(\frac{1}{x}\right)\left(\frac{x^2 - q^2}{4(1 - q)(1 - 2q)}\right)\left(\frac{x}{2(1 - q)(1 - 2q)}\right)dx = \frac{1}{12q^4}(32q^3 - 27q^2 + 9q - 1).$$

Thus for $\frac{1}{3} \leq q \leq \frac{1}{2}$ the decision-maker expected payoff simplifies to

$$(1 - 9q + 27q^2 - 8q^3)/(12q^2)$$

Case III: $q \geq \frac{1}{2}$. In this case, agents use fully revealing grading strategies in the second stage and the decision-maker's ex ante equilibrium expected payoff is

$$2q - q^2$$

Summarizing, in a subgame in which $q_a = q_b = q$, the decision-maker's ex ante expected payoff when financial exaggeration is possible is equal to:

$$u_p^* = \begin{cases} \frac{19}{12}q & \text{if } q \leq \frac{1}{3} \\ (1 - 9q + 27q^2 - 8q^3)/(12q^2) & \text{if } \frac{1}{3} \leq q \leq \frac{1}{2} \\ 2q - q^2 & \text{if } q > \frac{1}{2} \end{cases} \quad (\text{A5})$$

Now, we can consider the payoff to the decision-maker for different values of $\rho < 2$. Substituting into (A5) yields (7). Taking the difference between (6) and (7) yields

$$\begin{aligned} & 1 - (1 - \frac{\rho}{4})^2 - \frac{19}{12}\frac{\sqrt{2\rho}}{4} & \text{if } \rho \leq \frac{8}{9} \\ & 1 - (1 - \frac{\rho}{4})^2 - \frac{1}{12(\frac{\sqrt{2\rho}}{4})^2}(1 - 9\frac{\sqrt{2\rho}}{4} + 27(\frac{\sqrt{2\rho}}{4})^2 - 8(\frac{\sqrt{2\rho}}{4})^3) & \text{if } \frac{8}{9} \leq \rho \leq 2 \end{aligned}$$

Plotting these payoff functions clearly shows that when investment is endogenous, the decision-maker's evaluator payoff is higher when exaggeration is allowed. ■

Proof of Proposition 4.

Proof. First consider that $\rho \geq 2$. Suppose that agent j chooses $q_j = 1$. All pure strategies $q_i \in (0, 1)$ lead to payoff zero. Because investment is costly, and given agent j 's strategy, the best deviation from $q_i = 1$ is $q_i = 0$. Thus, provided

$$\frac{1}{2} - \frac{1}{\rho} \geq 0 \leftrightarrow \rho \geq 2$$

$q_i = 1$ is a best response to $q_j = 1$, and full investment is the unique equilibrium.

Now, consider that $1 < \rho < 2$. Under the parameter range in the proposition, all values we claim are probabilities are in $[0, 1]$ and sum to one. Also, $F(x)$ is increasing on the support of Q which is $[0, \sqrt{2-\rho}]$. To show that the proposed strategies constitute a mixed strategy Nash equilibrium, we verify that each agent is indifferent among all pure strategies inside the support and that no pure strategy outside the support delivers a better expected payoff against the mixed strategy of the other player. A derivation of the equilibrium from the indifference conditions, which also shows uniqueness, is available upon request.

Consider agent i 's expected payoff from a pure strategy p in the support of its mixed strategy:

$$u = \begin{cases} 0 & \text{if } p = 0 \\ (\frac{2}{\rho} - 1)F(p) - \frac{p^2}{\rho} & \text{if } p \in [0, \sqrt{2-\rho}] \\ 1 - \frac{2(1-\frac{1}{\rho})}{2} - \frac{1}{\rho} & \text{if } p = 1 \end{cases}$$

Substituting and simplifying gives:

$$u_\beta = \begin{cases} 0 & \text{if } p = 0 \\ (\frac{2}{\rho} - 1)\frac{p^2}{2-\rho} - \frac{p^2}{\rho} = 0 & \text{if } p \in [0, \sqrt{2-\rho}] \\ 1 - \frac{2(1-\frac{1}{\rho})}{2} - \frac{1}{\rho} = 0 & \text{if } p = 1 \end{cases}$$

Thus all pure strategies in the support of agent i 's mixed strategy give the agent expected payoff zero. Choosing any pure strategy $\hat{q} \in (\sqrt{2-\rho}, 1)$ is dominated by choosing $q = \sqrt{2-\rho}$, because the probability of winning is the same for both pure strategies, but q is less costly. Thus all pure strategies in the support of i 's mixed strategy give the same expected payoff against j 's mixed strategy, and no strategy outside the support gives i a higher payoff.

Now, consider that $\rho \leq 1$. To show that the proposed strategies constitute a mixed strategy Nash equilibrium, we verify that each agent is indifferent among all pure strategies inside the support and that no pure strategy outside the support delivers a better expected payoff against the mixed strategy of the other player. A derivation of the equilibrium from the indifference conditions, which also shows uniqueness, is available upon request.

Consider agent i 's expected payoff from a pure strategy p in the support of its mixed strategy:

$$u = \begin{cases} 0 & \text{if } p = 0 \\ F(p) - \frac{p^2}{\rho} & \text{if } p \in [0, \sqrt{\rho}] \end{cases}$$

Substituting and simplifying gives that in both cases $u = 0$. Thus all pure strategies in the support of agent i mixed strategy give the agent expected payoff zero. Choosing any pure strategy $\hat{q} \in (\sqrt{\rho}, 1)$ is dominated by choosing $q = \rho$, because the probability of winning is the same for both pure strategies, but q is less costly. Thus all pure strategies in the support of i mixed strategy give the same expected payoff against j mixed strategy, and no strategy outside the support gives i a higher payoff.

Finally, we can compare payoff comparisons for all three cases. If $\rho > 2$, uninformative reporting is clearly optimal since the unique equilibrium involves $q_i = q_j = 1$. We consider the other two cases in turn and show that uninformative reporting is preferred to either strategic reporting or fully-revealing reporting. In order to make this calculation, we need to know the evaluator payoff in the absence of reporting.

Case: $1 \leq \rho \leq 2$ Observe that

$$E[Q^{(2)}] = 2 \int_0^{\sqrt{2-\rho}} \left(\frac{2x}{2-\rho}\right)\left(\frac{x^2}{2-\rho}\right)(x)dx = \frac{4}{5}\sqrt{2-\rho}$$

Where $Q^{(2)}$ represents the maximum of two draws of Q . The decision-maker's expected payoff is therefore

$$1 - \left(\frac{2}{\rho} - 1\right)^2 + \left(\frac{2}{\rho} - 1\right)^2 E[Q^{(2)}] = \frac{4}{5\rho^2}((2-\rho)^{\frac{5}{2}} - 5(1-\rho))$$

Case: $\rho \leq 1$ Observe that the decision-maker's expected payoff is given by:

$$E[Q^{(2)}] = 2 \int_0^{\sqrt{\rho}} \left(\frac{2x}{\rho}\right)\left(\frac{x^2}{\rho}\right)(x)dx = \frac{4}{5}\sqrt{\rho}$$

A simple plot reveals that both of these payoffs dominate both fully-revealing and strategic reporting derived earlier in the paper. ■

Proof of Proposition 5.

Proof. Here we consider the model in which the agents' development costs are not identical, where $\rho_a > \rho_b$. If $\rho_a < 2$ and ρ_b is not too small, then a pure strategy equilibrium exists in the investment stage, which can be explicitly characterized. Consider the possibility of an equilibrium in which $q_a + q_b < 1$. Ruling out profitable deviations for agent i that are inside $[0, 1 - q_j]$ requires that the following system of first order conditions holds:

$$\frac{q_b}{(q_a + q_b^2)} - \frac{2q_a}{\rho_a} = 0 \quad \frac{q_a}{(q_a + q_b^2)} - \frac{2q_b}{\rho_b} = 0$$

The only solution of this system in which both investments are positive is

$$q_a = \frac{\sqrt{2\rho_a(\rho_a + \rho_b)\sqrt{\rho_a\rho_b} - 4\rho_a^2\rho_b}}{2(\rho_a - \rho_b)} \quad q_b = \sqrt{\frac{\rho_b}{\rho_a}}q_a$$

and these are local maxima. The term inside the radical is always positive:

$$2\rho_a(\rho_a + \rho_b)\sqrt{\rho_a\rho_b} - 4\rho_a^2\rho_b > 0 \iff (\rho_a + \rho_b)^2\rho_a^3\rho_b - 4\rho_a^4\rho_b^2 > 0 \iff \rho_1^3\rho_2(\rho_1 - \rho_2)^2 > 0$$

Next note that if $\rho_a < 2$ then $q_a < 1/2$ and therefore $q_a + q_b < 1$. Indeed,

$$\begin{aligned} \frac{\sqrt{2\rho_a(\rho_a + \rho_b)\sqrt{\rho_a\rho_b} - 4\rho_a^2\rho_b}}{2(\rho_a - \rho_b)} &< \frac{1}{2} \iff \\ \sqrt{2\rho_a(\rho_a + \rho_b)\sqrt{\rho_a\rho_b} - 4\rho_a^2\rho_b} &< (\rho_a - \rho_b) \iff \\ 2\rho_a(\rho_a + \rho_b)\sqrt{\rho_a\rho_b} - 4\rho_a^2\rho_b &< (\rho_a - \rho_b)^2 \iff \\ 4(\rho_a + \rho_b)^2\rho_a^3\rho_b &< (4\rho_a^2\rho_b + (\rho_a - \rho_b)^2)^2 \iff \\ 4(\rho_a + \rho_b)^2\rho_a^3\rho_b - (4\rho_a^2\rho_b + (\rho_a - \rho_b)^2)^2 &< 0 \iff \\ -(\rho_a - \rho_b)^2((\rho_a - \rho_b)^2 + 4\rho_a^2\rho_b(2 - \rho_a)) &< 0 \iff \end{aligned}$$

To complete the characterization, we show that when q_b is sufficiently close to q_a , no deviations in the range $[1 - q_j, 1]$ are optimal for player i . In this region, each player's payoff function is

$$\frac{1}{2}(1 + q_i - q_j) - \frac{q_i^2}{\rho_i}$$

with derivative

$$\frac{1}{2} - \frac{2q_i}{\rho_i} = \frac{4(\frac{\rho_i}{4} - q_i)}{2\rho_i}$$

Hence if $q_i > \rho_i/4$ for both $i = a, b$, then each player's payoff function is decreasing in this region (when the other player plays his part of the strategy) and therefore no deviation in this interval could be beneficial. Observe first that if $q_a > \rho_a/4$ then $q_b > \rho_b/4$. Indeed,

$$q_a > \rho_a/4 \Rightarrow q_a \sqrt{\frac{\rho_b}{\rho_a}} > \sqrt{\frac{\rho_b}{\rho_a}} \rho_a/4 \Rightarrow q_b > \frac{\sqrt{\rho_a \rho_b}}{4} > \frac{\rho_b}{4}$$

Hence, $q_a > \rho_a/4$ is sufficient to rule out global deviations. For $\rho_a < 2$, this condition is satisfied whenever

$$\rho_b > R_a \equiv \frac{\rho_a^2 - 16\rho_a + 32 + (4\sqrt{2}\rho_a - 16\sqrt{2})\sqrt{2 - \rho_a}}{\rho_a}$$

$R_a < \rho_a$ for $\rho_a < 2$. Hence for $R_a < \rho_b < \rho_a < 2$, the investment levels above constitute an equilibrium.

■

Proof of Proposition 6.

Proof. Let us start with the case in which there is rationing among high-type projects. Conditional on being $\tau_i = H$, define $\phi < 1$ to be the probability of being accepted. Each agent's optimal quality choice is calculated as

$$\phi q_i - \frac{q_i^2}{2\rho} \rightarrow q_i = \phi \rho_i.$$

Given this, the overall measure of good projects developed is

$$\int_0^1 \phi \rho_i f(\rho_i) d\rho_i = \phi \mu.$$

For consistency ϕ must be the share of acceptable projects among those that are good

$$\phi = \frac{x}{\phi \mu} \rightarrow \phi = \sqrt{\frac{x}{\mu}}$$

and to be consistent with rationing, it must be that $x \leq \mu$. Hence, actual measure of good projects in this case is $\phi \mu = \sqrt{x\mu}$. Since only x are accepted, the decision-maker's payoff equals x . Each

agent's investment in quality is calculated as

$$q_i = \phi \rho_i = \sqrt{\frac{x}{\mu}} \rho_i.$$

By inspection, each agent's effort is increasing in the x .

Now, suppose that the decision-maker accepts all projects with $\tau_i = H$ and a ϕ fraction of the projects with $\tau_i = L$. Each agent's optimal quality choice is calculated as

$$q_i + \phi(1 - q_i) - \frac{q_i^2}{2\rho} \rightarrow q_i = (1 - \phi) \rho_i.$$

Given this, the overall measure of good projects developed is

$$\int_0^1 (1 - \phi) \rho_i f(\rho_i) d\rho_i = (1 - \phi) \mu.$$

and overall measure of bad projects developed is

$$1 - (1 - \phi) \mu.$$

For consistency ϕ must be the share of projects accepted among those that are bad

$$\begin{aligned} \phi &= \frac{x - (1 - \phi) \mu}{1 - (1 - \phi) \mu} \rightarrow \\ \phi_1 &= \frac{1}{2\mu} \left(2\mu - 1 + \sqrt{1 - 4\mu(1 - x)} \right) \\ \phi_2 &= \frac{1}{2\mu} \left(2\mu - 1 - \sqrt{1 - 4\mu(1 - x)} \right) \end{aligned}$$

Since $\mu < \frac{1}{2}$, $\phi = \phi_1$. Since all good projects are accepted, the decision-maker payoff is equal to the measure of good projects:

$$(1 - \phi) \mu = \left(1 - \frac{1}{2\mu} \left(2\mu - 1 + \sqrt{1 - 4\mu(1 - x)} \right) \right) \mu.$$

Each agent's investment in quality is calculated as

$$q_i = \left[1 - \frac{1}{2\mu} \left(2\mu - 1 + \sqrt{1 - 4\mu(1 - x)} \right) \right] \rho_i.$$

By inspection, both the decision-maker's payoff and each agent's quality choice is decreasing in x .

■

Proof of Proposition 7.

Proof. Suppose $G < 1$ and no rationing at G . An agent with ρ_i has a payoff payoff

$$\frac{q_i}{G} - \frac{q_i^2}{2\rho}$$

from choosing $q_i < G$ and payoff $1 - \frac{G^2}{2\rho}$ from choosing $q_i = G$. The former case is equivalent to putting in less effort, but making up for it by exaggerating less. The latter case is equivalent to choosing $\theta = 1$ (i.e., an uninformative signal), but investing sufficient quality to get the resource.

Among the agents who choose $q_i < G$,

$$\begin{aligned} q_i &= \frac{\rho_i}{G} \\ u_i &= \frac{\frac{\rho_i}{G}}{G} - \frac{\left(\frac{\rho_i}{G}\right)^2}{2\rho_i} = \frac{\rho_i}{2G^2}. \end{aligned}$$

Since $q_i < G$, it follows that $\rho_i < G^2$. Note it is easy to check that for $\rho_i < G^2$, investing ρ_i/G is preferred to deviating:

$$\begin{aligned} \frac{\rho_i}{2G^2} &> 1 - \frac{G^2}{2\rho_i} \\ \frac{\rho_i}{2G^2} - \left(1 - \frac{G^2}{2\rho_i}\right) &= \frac{1}{2G^2\rho_i} (\rho_i - G^2)^2 > 0 \end{aligned}$$

If $\rho_i > G^2$, then the optimal quality is G . Hence, all types with $\rho_i < G^2$ prefer to exert effort less than G and then give a more informative signal, whereas types with $\rho_i > G^2$ exert effort G and always claim to have a good outcome. Hence, mass of agents with projects that exactly hit threshold G is equal to

$$\int_{\rho_L}^{G^2} \frac{\left(\frac{\rho_i}{G}\right)}{G} f(\rho_i) d\rho_i + (1 - F(G^2)).$$

Because no rationing is possible at G , unless G is 1, it must be that if there is no rationing in equilibrium, then :

$$\int_{\rho_L}^{G^2} \frac{\rho_i}{G^2} f(\rho_i) d\rho_i + (1 - F(G^2)) = x,$$

and if rationing, then $G = 1$, and hence,

$$\mu < \int_{\rho_L}^{\min\{\rho_H, 1\}} \rho_i f(\rho_i) d\rho_i.$$

Now, let us consider that $\rho \sim U [0, 1]$. In that case $x < \frac{1}{2}$ implies that the equilibrium is fully revealing, but $x > \frac{1}{2}$ implies that G solves

$$\int_0^{G^2} \frac{\rho_i}{G^2} d\rho_i + (1 - G^2) = x \rightarrow G = \sqrt{2(1 - x)}$$

The decision-maker's expected payoff is therefore the measure of projects that attain threshold G , i.e. x , multiplied by the expected payoff of each project, G i.e. decision-maker payoff is

$$x\sqrt{2(1 - x)}. \tag{A6}$$

Now, let us compare the decision-maker's payoff with full revelation versus exaggeration when $x > \frac{1}{2}$. Substituting $E[\rho_i] = \frac{1}{2}$ into (12) yields

$$u_d = \frac{1}{2}[1 - \sqrt{(2x - 1)}].$$

Comparing that to (A6) for $E[\rho_i] = \frac{1}{2}$, the decision-maker's payoff is higher with exaggeration if

$$F(x) = x\sqrt{2(1 - x)} - \frac{1}{2}[1 - \sqrt{(2x - 1)}] > 0. \tag{A7}$$

It is easy to show that $F(x) = 0$ for $x = \frac{1}{2}$ and $x = 1$. Further, $F'(x) > 0$ for $x \in [\frac{1}{2}, \frac{2}{3}]$ and $F''(x) < 0$ for all $x \geq \frac{1}{2}$. Therefore, (A7) holds. ■