

NBER WORKING PAPER SERIES

IMPLICATIONS OF HETEROGENEITY IN PREFERENCES, BELIEFS AND ASSET
TRADING TECHNOLOGIES FOR THE MACROECONOMY

YiLi Chien
Harold L. Cole
Hanno Lustig

Working Paper 20328
<http://www.nber.org/papers/w20328>

NATIONAL BUREAU OF ECONOMIC RESEARCH
1050 Massachusetts Avenue
Cambridge, MA 02138
July 2014

We would like to thank the SED for giving us the opportunity to present our new aggregation result and our heterogeneous belief findings as part of the plenary lecture in Seoul Korea in June of 2013. The views expressed herein are those of the authors and do not necessarily reflect the views of the National Bureau of Economic Research.

NBER working papers are circulated for discussion and comment purposes. They have not been peer-reviewed or been subject to the review by the NBER Board of Directors that accompanies official NBER publications.

© 2014 by YiLi Chien, Harold L. Cole, and Hanno Lustig. All rights reserved. Short sections of text, not to exceed two paragraphs, may be quoted without explicit permission provided that full credit, including © notice, is given to the source.

Implications of Heterogeneity in Preferences, Beliefs and Asset Trading Technologies for
the Macroeconomy

YiLi Chien, Harold L. Cole, and Hanno Lustig

NBER Working Paper No. 20328

July 2014

JEL No. E21,E44,G11,G12

ABSTRACT

This paper extends the methodology developed in Chien, Cole and Lustig (2011 & 2012) (hereafter CCL2011 and CCL2012, respectively) to analyze and compute the equilibria of economies with heterogeneous agents who have different asset trading technologies and are subject to both aggregate and idiosyncratic income risk. The different asset trading technologies, which are designed to replicate the portfolio behavior seen in the data, fall into two classes. Active traders manage the composition of their portfolios among a given set of assets in addition to choosing how much to save. Passive traders take their portfolio composition as given and choose only how much to save. There can be a wide variety of different cases within each classes. For active traders, the trading technology varies depending on the set of assets that they can use, while for passive traders it varies with the specific portfolio composition rule. In CCL2011 and CCL2012, all of our agents had to have the same CRRA flow utility functions, discount rates, and beliefs. In this extension, this restriction is relaxed greatly extending the set of economies to which our method applies. This richer degree of heterogeneity allows the model to match a number of key features of the data.

YiLi Chien
Research Division
Federal Reserve Bank of St. Louis
P.O. Box 442
St. Louis, MO 63166-0442
yilichien@gmail.com

Hanno Lustig
UCLA Anderson School of Management
110 Westwood Plaza, Suite C413
Los Angeles, CA 90095-1481
and NBER
hlustig@anderson.ucla.edu

Harold L. Cole
Economics Department
University of Pennsylvania
3718 Locust Walk
160 McNeil Building
Philadelphia, PA 19104
and NBER
colehl@sas.upenn.edu

Implications of Heterogeneity in Preferences, Beliefs and Asset Trading Technologies for the Macroeconomy*

YiLi Chien, Harold Cole and Hanno Lustig[†]

first version June 2013

revised July 14, 2014

Abstract

This paper analyzes and computes the equilibria of economies with large numbers of heterogeneous agents who have different asset trading technologies, preferences, and beliefs. We illustrate the value of our method by using it to evaluate the implications of these heterogeneities through several quantitative exercises.

1 Introduction

This paper extends the methodology developed in Chien, Cole, and Lustig (2011) and Chien, Cole, and Lustig (2012) (hereafter CCL2011 and CCL2012, respectively) to analyze and compute the equilibria of economies with heterogeneous agents who have different asset trading technologies and are subject to both aggregate and idiosyncratic income risk. The different asset trading technologies, which are designed to replicate the portfolio behavior seen in the data, fall into two classes. *Active traders* manage the composition of their portfolios among a given set of assets in addition to choosing how much to save. *Passive traders* take their portfolio composition as given and choose only how much to save. There can be a wide variety of different cases within each classes. For active traders, the trading technology varies depending on the set of assets that they can use, while for passive traders

*We would like to thank the SED for giving us the opportunity to present our new aggregation result and our heterogeneous belief findings as part of the plenary lecture in Seoul Korea in June of 2013.

[†]Chien: Research Division, Federal Reserve Bank of St. Louis, P.O. Box 442, St. Louis, MO 63166-0442; yilichien@gmail.com. Cole: University of Pennsylvania, 3718 Locust Walk Philadelphia, PA 19104; colehl@sas.upenn.edu. Lustig: UCLA Anderson School of Management, 110 Westwood Plaza, Los Angeles, CA 90095; hlustig@anderson.ucla.edu.

it varies with the specific portfolio composition rule. In CCL2011 and CCL2012, all of our agents had to have the same CRRA flow utility functions, discount rates, and beliefs. In this extension, this restriction is relaxed greatly extending the set of economies to which our method applies. This richer degree of heterogeneity allows the model to match a number of key features of the data.

To compute and characterize equilibria, we use a recursive multiplier method and analytic aggregation results with respect to consumption shares and the stochastic discount factor that rely on a single cross-sectional moment of the multiplier distribution. As a result, we can compute equilibria with an iterative method in which we guess and recover a transition rule for the updating of this moment. These iterations do not require computation of "market clearing prices" since we know them analytically as a function of the updating rule. Instead, we simply solve the analog of a dynamic programming problem for each type of agent with respect to their individual multipliers to determine their individual multiplier updating rule. The only input into this problem is the stochastic discount rate implied by the conjectured updating rule for the key cross-sectional multiplier moment. We then pass individual agent's multiplier updating rules through a stochastic panel of aggregate and individual shocks to determine the implied updates of the key cross-sectional multiplier moment. If we recover the same updating rule we conjectured, then we have solved for an equilibrium of our economy. Otherwise, we use the implied updating rule to modify our conjectured rule and continue to iterate on the aggregate multiplier transition rule.

In CCL2011 and CCL2012, we relied on the homogeneity of the inverse of the marginal utility of consumption when all households have common CRRA preferences, discount rates, and beliefs. In our extension, we create a parallel economy of reference traders who have common CRRA preferences, discount rates, beliefs, and a mapping rule that maps our standard household's multiplier into a multiplier for the reference traders such that their consumptions are equal history-state-by-history-state if state prices are the same. All of our aggregation results hold in the parallel economy. Our extended methodology takes advantage of this by using a guess and recover method for the transition rule for the key cross-sectional moment of the reference economy multipliers. We use the regular economy to determine updating rule for traders individual multipliers, given the state prices implied by the transition rule for the key moment of the reference trader's multiplier distribution. We then use these individual updating rules to determine the realized individual multipliers in a stochastic panel. We map these multipliers into the multipliers for our reference traders and then determine the cross-sectional moment and updated transition rule in the parallel economy. The new procedure essentially adds one small step to the original algorithm. However, the set of economies that can be handled includes any for which we can construct

a multiplier mapping rule for the reference traders, which turns out to be a very broad set.

Our methodology is well suited to exploring the implications of a rapidly growing literature on household finance that studies the portfolio decisions of households for the macroeconomy. This literature finds that many households do not use asset markets as our standard theory would predict: Both the extent of the assets they use and how they use them differ in important ways (see Guiso and Sodini (2012) for a survey of this literature). First, many households do not use all of the available assets. Second, even households that hold equities make very few adjustments in their financial positions. Third, many households that do adjust their portfolios seem to do so in a backward-looking manner that leads them to systematically mistime the market. These empirical findings suggest that many households are either completely unresponsive to variations in the pricing of risk or they respond in the wrong direction. This pattern of asset usage by households is potentially important since it creates a form of market segmentation that can have wide ranging implications for many aspects of our models' predictions such as household consumption behavior, the distribution of wealth, and most directly, asset prices.

CCL2011 and CCL2012 used this methodology to impose portfolio behavior on passive households in the model to evaluate its impact. We found that having a large number of investors who invest only in low-risk / low-return portfolios means that other investors must take on more risk, particularly aggregate risk. We also found that having a large number of investors who invest in equities very passively, allowing the equity share in their portfolios to rise and fall with excess returns on equity, means that the equity investments of other traders who do adjust their equity positions must move in a counter-cyclical manner, rising when the price of risk is high and falling when it is low. We found that the concentration of aggregate risk through equities on a small number of active traders has the potential to generate both a high and a highly volatile market price of risk (MPR), which has been a challenge for our asset pricing models (see Lettau and Ludvigson (2010)). Also, having a large number of households that do not use assets well can explain their failure to smooth their consumption to the degree that the richness of actual financial markets would allow. Finally, the fact that households realize very different returns on their investments can explain the distribution of wealth: both the fact that it is highly skewed relative to income and that equity investment is highly correlated with wealth.

We apply this new methodology to several quantitative experiments. In the first set of experiments, we examine the impact of different attitudes toward the future derived through either belief heterogeneity or patience. We consider two forms of belief heterogeneity that lead to overweighting of recent events or recency bias in forming their beliefs. Disagreements of this sort seem natural in a world in which the stationarity of the mechanism generating

our data is not obvious. We examine the implications of this recency bias for the behavior of our actively trading households because belief differences are likely important both in terms of their overall savings behavior and their portfolio decisions. The active traders with some form of recency bias become more (less) optimistic about the likelihood of a good growth shock precisely when the price of risk is rising (falling); their investment behavior is less responsive to the price of risk, forcing the standard active traders to have large counter-cyclical aggregate risk exposure. This leads the recency-bias active traders to mistime the market and substantially increases the counter-cyclical volatility of the MPR. This mechanism is complementary to the mechanisms explored in CCL2011 and CCL2012 because it involves a different set of traders and a similar cyclical concentration of risk for the standard active traders. In addition, the inclusion of active traders with reduced patience has very little impact on asset prices because these reduced-patience traders take very similar portfolio positions as the standard active traders. The major impact of reduced patience is on their overall wealth level, which falls because of the reduction in their precautionary motive to save.

In the second set of experiments, we examine the role of difference in the attitude toward future fluctuations in consumption derived through different degrees of risk aversion (RA), or the intertemporal rate of substitution (IES), or both. To undertake this experiment, we extend our methodology to include recursive preferences. We then compare the implications of changing these two preference factors for the asset pricing, portfolio, and wealth implications of our model. We find that changes in the IES have very little impact on either overall asset prices or the savings and portfolio decisions of our active traders. In contrast, changes in the degree of risk aversion matter greatly. Increased willingness by some of our active traders to absorb aggregate risk leads to a reduction in the extent to which our standard active traders must absorb aggregate risk and, consequently, a reduction in its price.

One striking finding of our experiments is that households with incorrect beliefs, low discount factors, or higher degrees of risk aversion do not become economically negligible. In fact, they remain large and important throughout. The reason for this is twofold. First, the presence of idiosyncratic risk and net wealth bounds implies that these households have large precautionary saving motivations at low wealth levels. Second, the low risk-free rate exerts a downward force on household wealth. The combination of these factors leads to an ergodically stable wealth distribution for our economy. Moreover, if the standard active traders became economically completely dominant, then asset prices would have to reflect this, which would lead to a low price of risk and a high risk-free rate. This, in turn, would make the other trading technologies more effective and the consequence of incorrect beliefs less substantial. Hence, prices end up adjusting so that these standard active households

never become dominant. However, in our belief experiments the right tail of the wealth distribution consists of active traders with the correct beliefs.

The paper proceeds as follows. After a brief literature review, we lay out our model and develop our aggregation results. We do this by constructing a recursive multiplier that serves as the individual's state. Armed with our revised aggregation result, we turn next to our quantitative experiments.

2 Literature Review

The use of cumulative multipliers in solving equilibrium models was pioneered by Marcet and Marimon (1992), Marcet and Marimon (1999) and Kehoe and Perri (2002). See also Cole and Kubler (2012), and Messner, Pavoni, and Sleet (2012) for extensions and further developments of these methods.

Our use of measurability constraints to capture portfolio restrictions is similar to that in Aiyagari, Marcet, Sargent, and Seppala (2002), while the aggregation result extends that in Chien and Lustig (2010) to an incomplete markets environment. In continuous-time finance, Basak and Cuoco (1998) and Cuoco and He (2001) provide a computationally efficient algorithm for computing equilibria in environments with a large number of agents subject to both idiosyncratic risk and aggregate risk and heterogeneity in trading opportunities. Recently, Brumm and Kubler (2013) have used recursive multipliers to construct an existence proof and characterize the equilibria in OLG economies. Our paper is related to work by Krusell and Smith (1998) who have an aggregation result for a production economy in which capital is the only traded asset.

Our quantitative results are related to several literatures. One of our main findings is that because of idiosyncratic risk and net wealth constraints households do not become economically negligible despite having incorrect beliefs, or being more myopic, or having high risk aversion. In fact the precautionary motive is so strong that households with incorrect beliefs but sophisticated asset portfolio/trading rule end up having more wealth than the average household who is using a less sophisticated rule. These results are the flip side of results like Sandroni (2000) or Blume and Easley (2006) who showed the individual's with incorrect beliefs will become economically negligible in a Pareto-efficient economy because they will asymptotically put zero weight on outcome paths that are consistent with the correct stochastic process. These results are consistent with those of Tsyrennikov, Sargent, and Cogley (2013) who show agents with Bayesian learning die out in complete markets vs. agents who know the law of motion for the exogenous shocks, but not when the only asset is a bond. However, Borovicka (2013) has shown analytically that agents with incorrect beliefs

can survive with recursive preferences in which the level of risk aversion is above the IES.

In terms of asset pricing, we find that having agent's who overweight recent data tends to magnify cyclical fluctuations in the pricing of risk. This is because the Sharpe ratio is counter-cyclical in our model, as it is in the data. Hence, a sequence of bad shocks both drive up the Sharpe ratio and down probability that our Bayesian agents assign to probability of getting a good shock. This dampens their responsiveness to fluctuations in the true Sharpe ratio and ends up making it rise by more to make the rational agents demand more risky assets. Our feedback effect works very differently than Long, Shleifer, Summers, and Waldman (1990) because the increase in volatility is not coming from the tendency of traders who excessively optimistic bidding up prices. Instead, our traders have different beliefs about the law of motion for the shocks which induce them to have more stable portfolio behavior. This forces the equity share of the rational traders to become more counter-cyclical and thereby induces greater fluctuations in the market price of risk.

We also examine the impact of having households who are more myopic. This turns out to have relatively small affects since these households act as if they have a lower wealth target coming from the reduce impact of the net wealth constraint on precautionary savings. However, their portfolio decisions are similar which leads to only a modest increase in their consumption volatility but essentially no change in the market price of risk or its volatility. In a related vein, Cvitanic, Jouini, Malamud, and Napp (2011) derive analytic characterizations of an exchange economy with differing beliefs, risk aversion and time preference, and show that asymptotically prices are determined by the agents how place the most value on consumption in those states. (See also Ross, Westerfield, Wang, and Kogan (2011), Beker and Espino (2011) and Beker and Espino (2013).)

In terms of the role of recursive preferences and the differing affects of risk aversion and the IES on asset pricing and consumption, we find that increasing the IES modestly increases the volatility of a household's consumption but does to change their portfolios. Hence, adding in these households has almost no affect on the market price of risk or its volatility. However, adding in households with lower risk aversion has large affects because it changes their portfolio behavior and through that asset prices. The price of risk falls substantially while its volatility rises. Bhamra and Uppal (2013) examine analytically the impact of changes in risk aversion and the IES in a three period partial equilibrium model. They also find that risk aversion is important for portfolio behavior. (See also Bhamra and Uppal (2006).)

3 Model

This is an endowment economy with a single, nonstorable consumption good in each period. Time is discrete, infinite, and indexed by $t = 0, 1, 2, \dots$. The first period, $t = 0$, is a planning period in which financial contracting takes place. There are a unit measure of households that come in a finite set of household types indexed by $i \in \{1, \dots, I\}$. These household types differ in terms of their preferences, beliefs, and asset trading technologies. All households have additively separable utility functions over consumption with constant discount rates. The aggregate amount of the endowment good is stochastic, and household endowments are subject to both aggregate and idiosyncratic shocks. Asset markets are complete, and both a stock and a risk-free bond are traded. A household's portfolio selection is limited by its trading technology.

3.1 Endowments and Shocks

There are two kinds of shocks. The first is an aggregate growth rate shock $z_t \in Z$. The second is an idiosyncratic household-specific income shock $\eta_t \in N$ in period t . We assume that Z and N are finite. The variable z^t denotes the history of aggregate shocks and η^t denotes the history of idiosyncratic shocks. The history state for a household is (z^t, η^t) .

The aggregate per capita supply of the endowment good is given by $Y_t(z^t)$ and evolves according to

$$Y_t(z^t) = e^{z_t} Y_{t-1}(z^{t-1}), \quad (1)$$

with $Y_0(z^0) = 1$. A household's endowment of this good comes in the form of two Lucas fruit trees. The first tree yields *diversifiable income* $(1 - \gamma)Y_t(z^t)$. The household is free to trade claims directly on this income and hence it forms the basis for a positive net supply of financial wealth. The second tree yields *non-diversifiable income* $\gamma Y_t(z^t)\eta_t$ and is subject to the household's idiosyncratic income shock. We assume that the household cannot directly trade away its claim to non-diversifiable income; hence, its ability to hedge its idiosyncratic risk will depend on whether its asset trading technology allows it to trade claims that are conditional on η_t . For simplicity, we assume that all households face the same stochastic process for idiosyncratic shock. We assume that the expected value of η_t is 1 and that the law of large numbers applies. So, these idiosyncratic income shocks average out in the population. Thus the per capita supply of non-diversifiable income is $\gamma Y_t(z^t)$, and γ is the overall share of income that is non-diversifiable.

We use $\pi(z^t, \eta^t)$ to denote the unconditional probability of state (z^t, η^t) being realized. In a slight abuse of notation, we also use $\pi(\eta^t)$ to denote the unconditional probability of

personal history η^t . Since we can appeal to the law of large numbers, $\pi(\eta^t)$ also denotes the fraction of agents in state z^t that have drawn an idiosyncratic history η^t . The events are first-order Markov and, continuing our pattern of notation abuse, we assume that the conditional probability of (z^{t+1}, η^{t+1}) is given by

$$\pi(z^{t+1}, \eta^{t+1} | z^t, \eta^t) = \pi(z_{t+1} | z_t) \pi(\eta_{t+1} | \eta_t, z_{t+1}). \quad (2)$$

Thus, we allow the distribution of idiosyncratic shocks to depend on the aggregate shock, but not the reverse.

We introduce some additional notation to deal with the timing on the event tree: $z^{t+1} \succ z^t$ or $\eta^{t+1} \succ \eta^t$ means that the left-hand-side node is a successor node to the right-hand-side node. We denote by $\{z^\tau \succ z^t\}$ the set of successor aggregate histories for z^t , including those many periods in the future; we do the same for $\{\eta^\tau \succ \eta^t\}$. When we use \succeq , we include the current nodes z^t or η^t in the set.

3.2 Preferences

Households come in a variety of types which indexed by i . A household of type i has a flow utility function $u^i(c)$, where u^i is strictly concave and differentiable. We also assume that the marginal utility of consumption is continuous and monotonic, so it is invertible. Households discount future utility at a constant but potentially type-specific rate, β_i . The measure of type i households is given by μ_i . The households are expected utility maximizers; however, we allow their beliefs to differ from the true probabilities. A household of type i has preferences over stochastic consumption sequences given by

$$\sum_{t \geq 1, (z^t, \eta^t)}^{\infty} (\beta_i)^t u^i(c_t) \tilde{\pi}^i(z^t, \eta^t),$$

where $\tilde{\pi}^i(z^t, \eta^t)$ denotes the probabilities that agent i assigns to state (z^t, η^t) .¹ We assume that $\tilde{\pi}^i(z^t, \eta^t)$ is separable between z^t and η^t , as in (2), and that all agents have common beliefs about the agent's personal outcomes η^t given by the actual probabilities $\pi(\eta_{t+1} | \eta_t, z_{t+1})$. However, agents may differ with respect to the aggregate probabilities, with $\tilde{\pi}^i(z_{t+1} | z_t)$ denoting agent i 's aggregate beliefs.²

¹It is straightforward to add preference shocks to our model.

²Without this assumption of common beliefs about idiosyncratic risk, we cannot price this risk in the simple manner assumed in equation (3).

3.3 Asset Markets

Households trade assets in securities markets that reopen every period. A wide range of assets can be traded, including one-period Arrow securities, a risk-free bond, and a levered equity claim. So, asset markets are complete, but restrictions on a household's ability to use these assets may render it incomplete from its perspective. We denote the price of a unit claim to the final good in aggregate state z^{t+1} acquired in aggregate state z^t by $Q_t(z_{t+1}, z^t)$. We take the price of a unit claim in state (z^{t+1}, η^{t+1}) to be

$$Q((z_{t+1}, \eta_{t+1}), (z^t, \eta^t)) = Q_t(z_{t+1}, z^t)\pi(\eta_{t+1}|\eta_t, z_{t+1}). \quad (3)$$

If a trader can hedge his idiosyncratic risk, then this price is implied by arbitrage, while if not it is an innocuous assumption since he will care only about the aggregate state price $Q(z_{t+1}, z^t)$.

Starting from aggregate state-contingent Arrow bond prices, we can back out the aggregate present-value prices recursively as follows:

$$\tilde{P}(z^t) = Q(z_t, z^{t-1})Q(z_{t-1}, z^{t-2}) \cdots Q(z_1, z^0)Q(z_0).$$

From the present-value price $\tilde{P}(z^t)$, we can construct the state prices as

$$P(z^t) = \frac{\tilde{P}(z^t)}{\pi(z^t)}.$$

Consistent with (3), we let $\tilde{P}(z^t, \eta^t) = \tilde{P}(z^t)\pi(\eta^t|z^t)$.³ Finally, we let $m(z^{t+1}|z^t) = P(z^{t+1})/P(z^t)$ denote the stochastic discount factor that prices any random payoffs.

In addition to state-contingent bonds, we split the aggregate diversifiable income stream, $(1 - \gamma)Y_t(z^t)$, into payments on a risk-free debt and an equity claim. For simplicity, the bonds are taken to be one-period risk-free bonds. Since we assume a constant leverage ratio ψ , the supply of one-period non-contingent bonds $B_t^s(z^t)$ in each period needs to adjust such that

$$B_t^s = \psi [(1 - \gamma)V_t[\{Y\}] - B_t^s],$$

where $V_t[\{Y\}](z^t)$ denotes the value of a claim to aggregate income in node z^t . The payout to bond holders is given by $R_t^f(z^{t-1})B_{t-1}^s(z^{t-1}) - B_t^s(z^t)$, where $R_t^f(z^{t-1})$ is the risk-free rate between $t - 1$ and t in node z^{t-1} . The payments to shareholders, $D_t(z^t)$, are then determined

³The state price is independent of the realization of the idiosyncratic history.

residually as follows:

$$D_t = (1 - \gamma)Y_t - R_t^f(z^{t-1})B_{t-1}^s + B_t^s.$$

In our model, the supply of shares is constant and all equity payouts come exclusively in the form of dividends. We denote the value of the equity claim as $V_t[\{D\}](z^t)$. $R_t^e(z^t)$ denotes the gross return on the dividend claim between $t - 1$ and t . A trader who invests a fraction $\psi/(1 + \psi)$ in bonds and the rest in debt is holding the market portfolio. Note that both equities and the risk-free bond are in positive net supply because they add up to a claim to diversifiable wealth.

3.4 Asset Trading Technologies

Our households face different asset trading technologies that take the form of portfolio restrictions and net wealth constraints. Portfolio restrictions fix the relative amounts that the household can invest in certain groups of assets. As a result, a household can choose only how much to invest in such an asset group. Since the relative shares within a group will determine the return on the total amount invested in the group, given the asset returns within the group, each group in effect becomes a single asset from the perspective of a restricted household. The total number of groups available to a household, along with their possibly state-contingent returns, will then determine the extent to which it can allocate financial wealth tomorrow across states of the world.

To ensure that the stochastic discount factor is uniquely determined, at least with respect to the aggregate shock, we assume that a positive measure of our agents can freely trade an aggregate state-contingent bond. This implies that the return on any traded asset can be expressed in terms of the return on an Arrow security as a result of arbitrage. Hence, we can simply think of all households as trading the state-contingent Arrow securities subject to a linear portfolio restriction.

We denote by $b^i[(z^t, \eta^t), (z_{t+1}, \eta_{t+1})]$ the number of state contingent bonds purchased in state (z^t, η^t) and paying off one unit in state $([z^t, z_{t+1}], [\eta^t, \eta_{t+1}])$ by a household of type i . We denote the *vector* of bond positions acquired in state (z^t, η^t) by $b_{z_{t+1}, \eta_{t+1}}^i[(z^t, \eta^t)]$. (We use this notation whenever we convert a function into a conditional vector.) A household's trading technology implies a savings choice $\sigma(z^t, \eta^t)$ that has the same dimension as the number of asset groups among which the trader can choose. Their savings technology implies a matrix $\mathcal{A}^i(z^t)$ of asset group returns between z^t and $z^{t+1} \succ z^t$, which is of dimension $\#[Z \times N] \times \#\sigma(z^t, \eta^t)$ (i.e., the dimension of shocks \times the dimension of the number of asset choices). The portfolio restrictions of these restricted households can be expressed as the

requirement that

$$b_{z_{t+1}, \eta_{t+1}}^i [(z^t, \eta^t)] = \mathcal{A}^i(z^t) \times \sigma(z^t, \eta^t).^4$$

This linear restriction can encompass a wide range of standard cases.

Active traders have multiple groups and hence have genuine portfolio allocation decisions. Two examples of this class of traders are complete and aggregate-complete traders. *Complete traders* can freely trade Arrow securities; the dimension of $\sigma(z^t, \eta^t)$ is $\# [Z \times \Theta]$ and $\mathcal{A}^i(z^t) = I$. For *aggregate-complete traders* who can trade only in aggregate state contingent bonds, $\sigma(z^t, \eta^t)$ has dimension $\#Z$, and $\mathcal{A}^i(z^t) = 1$ for those row elements that correspond to a particular realization of the aggregate shock z_{t+1} . This leads to a collection of linear restrictions of dimension $\#Z$ for each (z^t, η^t) that have the form

$$b^i [(z^t, \eta^t), (z_{t+1}, \eta_{t+1})] - \sigma(z_{t+1}, z^t, \eta^t) = 0,$$

where $\sigma(z_{t+1}, z^t, \eta^t)$ denotes the aggregate state contingent bond position chosen at state (z^t, η^t) .

For active traders who can choose between a risk free bond and a stock portfolio, then $\sigma(z^t, \eta^t)$ has two elements, with the first being, say, investment in stocks and the second being purchases of bonds. $\mathcal{A}^i(z^t)$ is a matrix with two columns, where the first column is the stock return $R_{t+1}^e(z^{t+1})$ for the corresponding aggregate state and the second column is the risk-free rate $R_{t+1}^f(z^t)$. They have a restriction of the form

$$b^i [(z^t, \eta^t), (z_{t+1}, \eta_{t+1})] - \sigma^e(z^t, \eta^t) R_{t+1}^e(z^{t+1}) + \sigma^b(z^t, \eta^t) R_{t+1}^f(z^t) = 0,$$

where $\sigma^e(z^t, \eta^t)$ and $\sigma^b(z^t, \eta^t)$ denote for equity and bond investments at (z^t, η^t) .⁵

Passive traders have only one group, so there is no allocation decision, only an overall savings decision. We refer to these investors as *passive* since they do not actively manage their portfolios. Two examples of this class of traders are nonparticipants and fixed-portfolio traders. For *nonparticipant traders* who can trade only a risk-free bond, $\sigma(z^t, \eta^t)$ has dimension 1 and $\mathcal{A}^i(z^t)$ is a vector whose elements equal the risk-free rate $R_{t+1}^f(z^t)$. This leads to

⁴To be clear, we can also write this expression as

$$b^i [(z_{t+1}, \eta_{t+1})(z^t, \eta^t)] = \mathcal{A}_{(z_{t+1}, \eta_{t+1})}^i(z^t) \times \sigma(z^t, \eta^t),$$

which is the vector of realized returns for each asset in state (z^{t+1}, η^{t+1}) times the investment in each asset, summed up.

⁵In the quantitative analysis, we restrict attention to the case in which z_t takes on two values. In this case, spanning implies that our aggregate-complete traders are equivalent to equity-and-bond traders.

a series of linear restrictions of dimension 1 for each (z^t, η^t) with the form

$$b^i [(z^t, \eta^t), (z_{t+1}, \eta_{t+1})] - R_{t+1}^f(z^t)\sigma(z^t, \eta^t) = 0.$$

For *fixed-portfolio traders* whose restrictions imply that they hold a portfolio with fixed value shares of stocks and bonds, then $\sigma(z^t, \eta^t)$ has dimension 1 and $\mathcal{A}^i(z^t)$ is a vector whose elements equal the state-contingent returns on that portfolio $R_{t+1}^p(z^{t+1})$. In this case, the restrictions implied by $\mathcal{A}^i(z^t)$ take the form

$$b^i [(z^t, \eta^t), (z_{t+1}, \eta_{t+1})] - R_{t+1}^p(z^{t+1})\sigma(z^t, \eta^t) = 0.$$

Net-Wealth Constraints: Our traders also face a net-wealth constraint, which puts a lower bound on the value of their financial position at (z^t, η^t) of $\underline{D}_t^i(z^t)$, or

$$b^i [(z^t, \eta^t), (z_{t+1}, \eta_{t+1})] \geq \underline{D}_t^i(z^t) \text{ for all } (z^t, \eta^t) \text{ and } (z_{t+1}, \eta_{t+1}). \quad (4)$$

This net-wealth constraint plays an important role in the quantitative analysis since it prevents any traders from trading away all of his wealth. Note that since this constraint is on net-wealth, it does not directly restrict how negative a trader's bond position can be. In the quantitative analysis, we find it useful to scale the net-wealth constraint by aggregate output because output in this economy is nonstationary.

3.5 The Savings Function

It is convenient to pose the trader problems in terms of feasible consumption sequences $\{c^i(z^t, \eta^t)\}$. For that reason, we define the continuation net-savings function. This allows us to express our portfolio restrictions and net-wealth restrictions in terms of restrictions on the continuation consumption allocation.

Denote the *continuation net-savings* out of non-tradable income in state (z^t, η^t) for a trader of type i by $\mathcal{S}^i(z^t, \eta^t)$, where

$$\mathcal{S}^i(z^t, \eta^t) = \sum_{\tau \geq t} \sum_{(z^\tau, \eta^\tau) \succeq (z^t, \eta^t)} \tilde{P}(z^\tau, \eta^\tau) [\gamma Y(z^\tau)\eta_\tau - c^i(z^\tau, \eta^\tau)].$$

Since the present-value budget constraint from state (z^t, η^t) onward is given by ⁶

$$\mathcal{S}^i(z^t, \eta^t) + b^i(z^t, \eta^t)\tilde{P}(z^t, \eta^t) = 0,$$

⁶Note that $\mathcal{S}^i(z^t, \eta^t) < 0$ represents positive net saving.

this means that we can directly map restrictions on $b^i(z^t, \eta^t)$, the household's beginning of period financial wealth, into $\mathcal{S}^i(z^t, \eta^t)$, the present-value of its continuation net-savings. To see this, let $\mathcal{S}_{z_{t+1}, \eta_{t+1}}^i(z^t, \eta^t)$ denote the vector of continuation values conditional on the vector of history states that can follow from (z^t, η^t) or $(z^{t+1}, \eta^{t+1}) \succ (z^t, \eta^t)$. Then we can express our portfolio restriction in terms of net savings as

$$-\mathcal{S}_{z_{t+1}, \eta_{t+1}}^i[(z^t, \eta^t)] = [\mathcal{A}^i(z^t) \times \sigma(z^t, \eta^t)] \circ [\tilde{P}_{z_{t+1}, \eta_{t+1}}(z^t, \eta^t)].^7 \quad (5)$$

We can also express the net wealth constraint as

$$\mathcal{S}^i[(z^t, \eta^t), (z_{t+1}, \eta_{t+1})] \leq \underline{D}_t^i(z^t) \text{ for all } (z^t, \eta^t) \text{ and } (z_{t+1}, \eta_{t+1}).$$

This in turn allows us to reformulate our traders' problems solely in terms of consumption sequences.

3.6 Trader i 's Problem

We exploit the equivalence between the sequential choice problem and the present-value problem to formulate our trader's problem as a time-zero choice problem. Let χ denote the multiplier on the present-value budget constraint. Let $\nu(z^t, \eta^t)$ denote the multiplier on the trader's portfolio restrictions, and let $\nu_{z_{t+1}, \eta_{t+1}}(z^t, \eta^t)$ denote the vector collection of successor $\nu(z^{t+1}, \eta^{t+1})$ conditional on the history states (z^t, η^t) . Let $\varphi(z^t, \eta^t)$ denote the multiplier on the debt constraint. With this notation, the saddle point problem of trade i can be stated as

$$\begin{aligned} L = & \max_{\{c^t, \sigma^i\}} \min_{\{\chi, \nu, \varphi\}} \sum_{t=1}^{\infty} (\beta_i)^t \sum_{(z^t, \eta^t)} u^i(c^i(z^t, \eta^t)) \tilde{\pi}^i(z^t, \eta^t) \\ & + \chi^i \left\{ \sum_{t \geq 1} \sum_{(z^t, \eta^t)} \tilde{P}(z^t, \eta^t) [\gamma Y(z^t) \eta_t - c^i(z^t, \eta^t)] + \varpi(z^0) \right\} \\ & + \sum_{t \geq 1} \sum_{(z^{t-1}, \eta^{t-1})} \nu_{z_t, \eta_t}^i(z^{t-1}, \eta^{t-1}) \times \left\{ -[\mathcal{A}^i(z^{t-1}) \times \sigma^i(z^{t-1}, \eta^{t-1})] \circ \left[\tilde{P}_{z_t, \eta_t}(z^{t-1}, \eta^{t-1}) \right] \right\} \\ & + \sum_{t \geq 1} \sum_{(z^t, \eta^t)} \varphi^i(z^t, \eta^t) \left\{ \underline{D}_t^i(z^t) \tilde{P}(z^t, \eta^t) - \mathcal{S}^i(z^t, \eta^t) \right\}. \end{aligned} \quad (6)$$

The first constraint is the standard present-value budget constraint. We start each house-

⁷The symbol "o" denotes element-by-element multiplication, which will result in each asset position for state (z^{t+1}, h^{t+1}) being multiplied by the present value price $\tilde{P}(z^{t+1}, h^{t+1})$.

hold out symmetrically by endowing them with a claim to diversifiable income, $\varpi(z^0)$. There is no consumption in period 0; however, households use this period to trade their claims into consumption consistent with their trading technology as dictated by their measurability and borrowing constraints. The second constraint is the household's measurability constraint, which dictates that each period the household's continuation net savings, and hence its beginning of period net wealth, be consistent with the realized returns in z^t as given by $\mathcal{A}^i(z^{t-1})$ and asset investment choices in the prior period $\sigma^i(z^{t-1}, \eta^{t-1})$. This asset investment choice is chosen optimally, but its only role is to dictate how net savings, $\mathcal{S}_{z^t, \eta^t}^i(z^{t-1}, \eta^{t-1})$, can vary across realized states. This is because the present value budget constraint already requires overall consumption spending to be consistent with the household's overall wealth. The final constraint is the net wealth limit, which caps the extent to which wealth can be transferred across states by forcing the present value of net savings in that state not to be too high, and hence the net asset position too low.

This is a standard convex programming problem – the constraint set is still convex, even with the measurability conditions and the solvency constraints. The first order conditions are necessary and sufficient. The first-order condition for consumption is given by

$$\beta_i^t u^i(c^i(z^t, \eta^t)) \tilde{\pi}^i(z^t, \eta^t) - \left\{ \chi^i + \sum_{(z^\tau, \eta^\tau) \succeq (z^t, \eta^t)} [\nu^i(z^\tau, \eta^\tau) - \varphi^i(z^\tau, \eta^\tau)] \right\} \tilde{P}(z^t, \eta^t) = 0.$$

This condition is common to all traders irrespective of their trading technology because differences in their trading technology do not affect how $c(z^t, \eta^t)$ enters the objective function or the constraints. However, it does vary depending on their utility function, discount rate and beliefs.

To economize on notation, define the recursive multiplier

$$\zeta^i(z^t, \eta^t) = \chi^i + \sum_{(z^\tau, \eta^\tau) \succeq (z^t, \eta^t)} [\nu^i(z^\tau, \eta^\tau) - \varphi^i(z^\tau, \eta^\tau)].$$

Note that this implies that $\zeta_0 = \chi$ and that ζ evolves over time as follows for all $t \geq 1$:

$$\zeta^i(z^t, \eta^t) = \zeta^i(z^{t-1}, \eta^{t-1}) + \nu^i(z^t, \eta^t) - \varphi^i(z^t, \eta^t). \quad (7)$$

Given this notation, we can rewrite this first-order condition for consumption in terms of the state price $P(z^t)$ as

$$\beta_i^t u^i(c(z^t, \eta^t)) \tilde{\pi}^i(z^t, \eta^t) = \zeta^i(z^t, \eta^t) P(z^t) \pi(z^t, \eta^t). \quad (8)$$

The first order condition with respect to $\sigma(z^t, \eta^t)$ is specific to a trading technology. For active aggregate-complete traders, their conditions are given by

$$\sum_{\eta^{t+1} \succ \eta^t} \nu(z^{t+1}, \eta^{t+1}) \pi(\eta_{t+1} | z^{t+1}, \eta_t) P(z^{t+1}) = 0, \text{ for all } z^{t+1} \quad (9)$$

For passive fixed-portfolio traders, their conditions are

$$\sum_{(z^{t+1}, \eta^{t+1}) \succ (z^t, \eta^t)} \nu(z^{t+1}, \eta^{t+1}) R^p(z^{t+1}) \pi(z^{t+1}, \eta^{t+1}) P(z^{t+1}) = 0, \quad (10)$$

The recursive rule (7); the two first order conditions, (8) and (9) or (10); the measurability condition with respect to net savings, (5); and the net-wealth constraint written in terms of net savings determine the updating rule for our recursive multiplier.

3.7 The Reference Consumer, Consumption Shares, and Asset Prices

We construct a reference consumer for each household and a mapping from the household's recursive multiplier to a Negishi-type weight for the reference consumer in a static allocation problem that will lead him to consume the same level of consumption as the household given the state prices. These reference consumers have identical CRRA utility functions, discount rates, and beliefs. As a result, we are able to exploit an aggregation result along the lines of CCL2011 and CCL2012. To do so, we express the reference consumer's consumption share in terms of his Negishi weight and a single moment of the overall weight distribution in that aggregate state z^t . Given this, we are able to derive an expression for the stochastic discount factor that depends only on the aggregate growth rate of output and the updating of this single moment of the weight distribution.

We start by constructing an allocation problem for all traders. In this problem, the state contingent price of output is $P(z^t)$ and each reference agent has identical CRRA flow utility $\bar{u}(c)$, the same discount rate β , common beliefs π , and a Negishi weight $1/\bar{\zeta}^i(z^t, \eta^t)$. (In an abuse of language, we refer to $\bar{\zeta}^i(z^t, \eta^t)$ as the Negishi weight even though it is actually its inverse.) The static allocation problem is given by

$$\sum_i \left\{ \beta^t \sum_{(z^t, \eta^t)} \frac{1}{\bar{\zeta}^i(z^t, \eta^t)} \bar{u}(\bar{c}(z^t, \eta^t)) \pi(z^t, \eta^t) - P(z^t) \bar{c}(z^t, \eta^t) \right\} \mu_i.$$

The first-order condition for consumption is then given by

$$\frac{\beta^t(\bar{c}(z^t, \eta^t))^{-\bar{\alpha}}}{P(z^t)} = \bar{\zeta}(z^t, \eta^t),$$

where $\bar{\alpha}$ is the common risk-aversion rate for the reference trader. Then, note that if we set

$$\bar{\zeta}^i(z^t, \eta^t) : \left(\frac{\bar{\zeta}^i(z^t, \eta^t)P(z^t)}{\beta^t} \right)^{-1/\bar{\alpha}} = u'^{-1} \left(\frac{\zeta^i(z^t, \eta^t)\pi(z^t, \eta^t)P(z^t)}{\beta_i^t \tilde{\pi}^i(z^t, \eta^t)} \right), \quad (11)$$

then both the type i trader and the reference consumer with recursive multiplier $\bar{\zeta}^i(z^t, \eta^t)$ would make the same consumption choice (given the same price $P(z^t)$). In essence, this mapping rule indicates the appropriate "change in variables" to allow us to recover our aggregation results in this richer environment.

Remark 1. *This mapping takes a very simple form in case where $u^i(c^i(z^t, \eta^t))$ is CRRA and $\pi(z^t, \eta^t) = \tilde{\pi}^i(z^t, \eta^t)$. In this case, our mapping rule becomes*

$$\left(\frac{\bar{\zeta}^i(z^t, \eta^t)P(z^t)}{\beta^t} \right)^{-1/\bar{\alpha}} = \left(\frac{\zeta^i(z^t, \eta^t)P(z^t)}{\beta_i^t} \right)^{-1/\alpha_i},$$

where α_i is the CRRA coefficient for type i .

Assume that we constructed the social planning weight for each type of trader as dictated by (11). Then, note that since aggregate consumption is the sum of individual consumptions, it is given by

$$C(z^t) = \sum_i \left\{ \sum_{z^t, \eta^t} \left(\frac{\bar{\zeta}^i(z^t, \eta^t)P(z^t)}{\beta^t} \right)^{-1/\bar{\alpha}} \pi(z^t, \eta^t) \right\} \mu_i.$$

Note next that the consumption share of the type i reference consumer is given by

$$\frac{c^i(z^t, \eta^t)}{C(z^t)} = \frac{\bar{\zeta}^i(z^t, \eta^t)^{-1/\bar{\alpha}}}{\sum_i \left\{ \sum_{z^t, \eta^t} \bar{\zeta}^i(z^t, \eta^t)^{-1/\bar{\alpha}} \pi(z^t, \eta^t) \right\} \mu_i}.$$

Hence, the consumption share of the consumer is determined solely by the ratio of his social planning weight raised to the $-1/\bar{\alpha}$ relative to the average of this ratio in the population. Define this average as

$$h(z^t) = \sum_i \left\{ \sum_{z^t, \eta^t} \bar{\zeta}^i(z^t, \eta^t)^{-1/\bar{\alpha}} \pi(z^t, \eta^t) \right\} \mu_i. \quad (12)$$

This is our first aggregation result, where we have transformed our recursive multipliers in "weights" that we can use to construct consumption shares.

Assume that we had constructed the reference multipliers at all dates and states, and note that for each reference type

$$\frac{\beta \frac{(c^i(z^{t+1}, \eta^{t+1}))^{-\bar{\alpha}}}{P(z^{t+1})}}{\frac{(c^i(z^t, \eta^t))^{-\bar{\alpha}}}{P(z^t)}} = \frac{\bar{\zeta}^i(z^{t+1}, \eta^{t+1})}{\bar{\zeta}^i(z^t, \eta^t)}.$$

If we substitute consumption by using the prior result on consumption shares, we derive

$$\beta \frac{\left(\frac{\bar{\zeta}^i(z^{t+1}, \eta^{t+1})^{-1/\alpha} C(z^{t+1})}{h(z^{t+1})} \right)^{-\bar{\alpha}}}{\frac{P(z^{t+1})}{P(z^t)}} = \frac{\bar{\zeta}^i(z^{t+1}, \eta^{t+1})}{\bar{\zeta}^i(z^t, \eta^t)},$$

which simplifies to

$$\frac{P(z^{t+1})}{P(z^t)} = \beta \left(\frac{h(z^{t+1})}{h(z^t)} \right)^{\bar{\alpha}} \left(\frac{C(z^{t+1})}{C(z^t)} \right)^{-\bar{\alpha}}. \quad (13)$$

This is our second aggregation result, and leads to the following proposition.

Proposition 1. *Relative state prices in this economy are determined by the growth rate of aggregate consumption and the $-1/\bar{\alpha}$ population average of the reference Negishi weight.*

This result implies that we can think of the equilibrium of our economy in terms of a simple fixed point. If $H(z^{t+1}) = h(z^{t+1})/h(z^t)$ is the updating rule implied by the reference recursive multipliers, then prices are given by (13). Given the prices, when we construct the updating rule for $\zeta^i(z^t, \eta^t)$ and thereby for $\bar{\zeta}^i(z^t, \eta^t)$, the resulting values of

$$\sum_i \left\{ \sum_{z^t, \eta^t} \bar{\zeta}^i(z^t, \eta^t)^{-1/\alpha} \pi(z^t, \eta^t) \right\} \mu_i$$

must satisfy (12).

Remark 2. *Our aggregation results are fairly general. For example, we could have*

1. *assumed a finite of traders of each type,*
2. *allowed for preference shocks, θ_t , so that flow utility becomes $\theta_t u^i(c_t)$,*
3. *included an additively separate disutility of labor, so flow utility is $u^i(c_t) - v^i(l_t)$, or*
4. *as we shall show in one of our quantitative exercises below, assumed recursive utility.*

3.8 Computational Algorithm

Here we discuss how to construct a computational algorithm to compute an equilibrium of our model. The algorithm involves several steps. First, a law of motion for the updating of the multiplier moment ratio, $H(z^{t+1}) = h(z^{t+1})/h(z^t)$, is posited. Note that this updating rule is with respect to the cross-sectional moment of the reference traders. Given this updating rule, we can determine relative state prices $Q(z^{t+1}) = P(z^{t+1})/P(z^t)$ using (13). Second, we solve for the household's savings function and multiplier updating rule for the standard traders. Third, we map the sequences of household multipliers into the implied sequences of reference traders' multipliers and compute the implied updating rule for their multiplier moment. Fourth, we compare our original guess of $H(z^{t+1})$ with its realized value; if they are the same, we have an equilibrium and if not, we need to iterate on $H(z^{t+1})$ in some fashion. To simplify, we assume preferences are CRRA (though they may differ in terms of their degree of risk aversion). Remember that our agent's beliefs differ only with respect to the aggregate state's evolution.

To describe step 2 in more detail, note that we can recursively represent the savings functions as

$$\begin{aligned} \mathcal{S}^i(\zeta, \eta_t, z^t) &= [\gamma \eta_t Y(z^t) - c^i(\zeta, z^t)] \\ &+ \beta_i \sum_{(z_{t+1}, \eta_{t+1} | z^t, \eta^t)} \mathcal{S}^i(\zeta_{t+1}(z_{t+1}, \eta_{t+1}), \eta_{t+1}, z^{t+1}) Q_t(z_{t+1}, z^t) \pi(\eta_{t+1} | \eta_t, z^t), \end{aligned}$$

where

$$\beta_i^t u'(c^i(\zeta, z^t)) \frac{\tilde{\pi}^i(z^t, \eta^t)}{\pi(z^t, \eta^t)} = \zeta P(z^t).$$

To close the system we need to specify how the household's recursive multiplier ζ is updated.

The updating of the individual's multiplier $\zeta_{t+1}^i(z_{t+1}, \eta_{t+1})$,

$$\zeta_{t+1}^i(z_{t+1}, \eta_{t+1}) = \zeta_t^i + \nu^i(z_{t+1}, \eta_{t+1}) - \varphi^i(z_{t+1}, \eta_{t+1})$$

must be consistent with our (i) saving's measurability condition (5), (ii) net wealth constraint 4, and (iii) optimality condition (9 or 10). To satisfy (i) and (ii), there must exist $\sigma^i(z^t, \eta^t)$

$$-\mathcal{S}_{z_{t+1}, \eta_{t+1}}^i(\zeta_{t+1}^i(z_{t+1}, \eta_{t+1}), z^t) = [\mathcal{A}^i(z^t) \times \sigma^i(z^t, \eta^t)] \circ \left[\tilde{P}_{z_{t+1}, \eta_{t+1}}(z^t, \eta^t) \right],$$

where $\mathcal{S}_{z_{t+1}, \eta_{t+1}}^i(\zeta_{t+1}^i(z_{t+1}, \eta_{t+1}), z^t)$ is a conditional vector and $\zeta_{t+1}^i(z_{t+1}, \eta_{t+1})$ is understood

to vary with this conditioning, and

$$\underline{D}_{t+1}^i(z^{t+1})\tilde{P}(z^{t+1}, \eta^{t+1}) - \mathcal{S}^i(\zeta_{t+1}^i(z_{t+1}, \eta_{t+1}), \eta_{t+1}, z^{t+1}) \geq 0.$$

For example, to satisfy (iii) for passive fixed portfolio traders, it must be the case that

$$\sum_{(z^{t+1}, \eta^{t+1}) \succ (z^t, \eta^t)} [\zeta_{t+1}^i(z_{t+1}, \eta_{t+1}) - \zeta_t^i] R^p(z^{t+1}) \pi(z^{t+1}, \eta^{t+1}) P(z^{t+1}) = 0$$

if the net-wealth bound does not bind. To satisfy (iii) for an aggregate-complete trader it must be the case that

$$\zeta_{t+1}^i(z_{t+1}, \eta_{t+1}) = \zeta_t^i + \nu^i(z^{t+1}, \eta^{t+1})$$

if the net-wealth bound does not bind. If the net-wealth bound binds, then $\zeta_{t+1}^i(z_{t+1}, \eta_{t+1})$ must be such that it satisfies the bound and the bound multiplier $\varphi^i(z^{t+1}, \eta^{t+1})$ and portfolio-restrictions multiplier $\nu^i(z^{t+1}, \eta^{t+1})$ are chosen so that the updating rule and (9) or (10) are jointly satisfied. The outcome of step 2 is an operator $T^i(\zeta_t, \eta_t, z^t) = \zeta_{t+1}^i(z_{t+1}, \eta_{t+1}, \zeta_t)$, that gives the law of motion for the recursive multiplier ζ for a household of type i .

In the third step, we compute the implied sequence of multipliers $\{\zeta_t^i(z^t, \eta^t)\}_{t=0}^\infty$ for each of our types. We then use our mapping rule (11) to map these sequences into sequences of weights for our reference traders $\{\tilde{\zeta}_t^i(z^t, \eta^t)\}_{t=0}^\infty$. Then we can compute the implied values of the key moment of the distribution in each state (z^t, η^t) using (12), and thereby complete third step by computing the implied value of $H(z^{t+1}) = h(z^{t+1})/h(z^t)$.

This computation is simplified by first stationarizing the economy, and second making a key assumption. The law of motion $H(z^{t+1})$ depends in principle on the either history z^{t+1} . However, we have found that a sufficiently long but finite history allows computation of the equilibrium with a very high degree of accuracy. Let j denote the length of the utilized history and let $\mathbf{z} \in Z^j$ denote an element of these j -period histories. Then the moment updating and relative state prices – $H(\mathbf{z}, \mathbf{z}')$ and $Q(\mathbf{z}, \mathbf{z}')$ – are simply functions of the history transition. In addition, the saving function $\mathcal{S}^i(\zeta, \eta, \mathbf{z})$ and multiplier updating rule $T^i(\zeta, \eta, \mathbf{z})$ are functions of the aggregate history state, the current idiosyncratic shock, and the recursive multiplier ζ . Hence, computing them amounts to a simple fixed point operation.

In sum, our algorithm works by first positing $H^0(\mathbf{z}, \mathbf{z}')$ for all $\mathbf{z}, \mathbf{z}' \in Z^j$ and $\Pr(\mathbf{z}'|\mathbf{z}) > 0$ (i.e., positive probability history transitions). Then it works as follows:

1. Draw a long sample of aggregate shocks $\{z_t\}$ and a corresponding large panel of idiosyncratic shocks $\{\eta_t^{ij}\}$, where i corresponds to the trader's type and j distinguishes

among traders of a given type. The proportions of trader types is determined by μ_i . Construct the implied history state sequence $\{\mathbf{z}_t\}$ from $\{z_t\}$.

2. Construct the sequence of relative prices $Q^0(\mathbf{z}, \mathbf{z}')$ for each positive probability finite history transition using $H^0(\mathbf{z}, \mathbf{z}')$ and the pricing rule (13).
3. For each type i , use the stationary first-order conditions and savings function $\mathcal{S}^i(\eta, \mathbf{z}, \eta_t)$, along with the budget constraint and measurability conditions to construct the transition rule for their recursive multiplier $T : \zeta' = T^i(\eta, \zeta, \mathbf{z}, \mathbf{z}')$.⁸
4. Use $T^i(\eta, \zeta, \mathbf{z}, \mathbf{z}')$ and (11) to construct the implied sequence of reference recursive multiplier $\{\bar{\zeta}_t^{ij}\}$ for the panel. Note that these reference multipliers correspond one-to-one with the consumption share of each agent. We therefore take the ratio of the actual average consumption share and one as a measure of the allocation error (and hence of the accuracy of our approximation).
5. Construct the panel of implied reference weights and use them to estimate $H^{n+1}(\mathbf{z}, \mathbf{z}')$. If \mathbf{z} takes on a small set of values this can be done using simple conditional means.
6. If the accuracy is high and $\|H^{n+1}(\mathbf{z}, \mathbf{z}') - H^n(\mathbf{z}, \mathbf{z}')\|$ is small, stop. Otherwise, return to the second step with a new guess for H .

4 Baseline Model

The parameter setup of our baseline model is similar to that of CCL2011. Our baseline model operates at annual frequency. We set the value of the coefficient of relative risk aversion α to 5 and the time discount factor β to 0.95. These preference parameters allow us to match the collateralizable wealth to income ratio in the data when the tradable or collateralizable income share $1 - \gamma$ is 10%.

The aggregate shock process of our model is governed by a two state Markov chain and is largely calibrated to match the moments of consumption growth data used in Mehra and Prescott (1985). The average consumption growth rate is 1.8% and the standard deviation is 3.16%. The elements of the discretized process for aggregate shocks are $\{0.9602, 1.0402\}$. Since U.S. recessions occur less frequently than expansions, we set 27% of realizations as low aggregate consumption growth states and hence 73% are high growth states. Unlike Mehra

⁸In section 7, we consider recursive preferences. With recursive preference, both the recursive savings function and the appropriate ratio of future utility to expect future utility must be constructed. This ratio is denoted by $M(\eta', \zeta', \mathbf{z}, \mathbf{z}')$. See section 7 for details.

and Prescott (1985), we assume i.i.d. consumption growth, so the first-order autocorrelation coefficient of aggregate consumption growth is zero.

We calibrate the idiosyncratic income process as in Storesletten, Telmer, and Yaron (2007), except that we eliminate the counter-cyclical variation of labor income risk. Hence, the variance of labor income risk is constant in our model, which together with i.i.d. assumption of aggregate shock implies that all propagation is internally generated. The Markov process for the log of the labor income shock, $\log \eta$, has a standard deviation of 0.71 and its autocorrelation is 0.89. We also use a two-state discretization for idiosyncratic risk. The elements of the discretized process for η are $\{0.3894, 1.6106\}$.

Equity in our model is simply a leveraged claim to diversifiable income. Following Abel (1999) and Bansal and Yaron (2004), we set the leverage parameter ψ to 3 so the variance of the growth rate of dividends is closer to the data. We set the net wealth constraint at zero, which means that households cannot borrow against their idiosyncratic income.

We consider three types of trading technologies that can be easily ranked in terms of their sophistication. The first and most sophisticated are *aggregate-complete* active traders who can trade (i) Arrow bonds conditional on aggregate growth shocks and (ii) equity and risk-free debt claims. The second and least sophisticated are *nonparticipants* –, that is, passive traders who hold only risk-free bonds. The third technology is that of the *diversified* traders, who are passive traders who hold debt and equity claims in the same fixed proportion as existed in the market. The diversified traders are following the standard advice of holding the market and will earn a higher return than the nonparticipants to the extent that the economy exhibits an equity premium, which it will. That is why we rank the sophistication of their trading technology between that of the other two types.

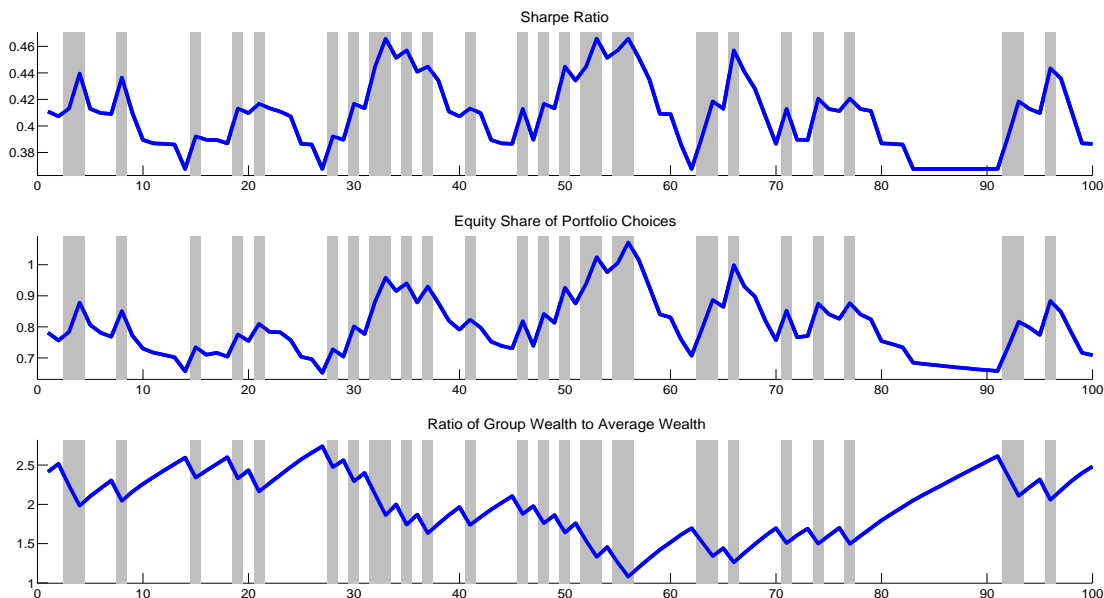
In the most recent Survey of Consumer Finances, around 50% of households reported owning stocks directly or indirectly. Therefore, the fraction of passive traders with zero equity holding (non-participants) is calibrated to 50%. In order to deliver a large equity premium, a small fraction of active traders need to bear the residual aggregate risk created by non-participants. This leads us to set the share of active traders to 10%. We set the share of passive traders who hold both equities and debt to 40%.

4.1 Baseline Results

We begin by computing the equilibrium outcomes for our baseline economy. Table 1 reports the results. The average value of the MPR of 0.40 and the risk-free rate of 1.93% are very close to what financial economists estimate in the data. The low volatility of the risk-free rate also agrees well with the data.

Figure 1 shows several plots of the dynamics of our baseline economy for a fixed 100 period simulation interval. Low aggregate growth rate realizations are in the grey shaded panes. A plot of the Sharpe ratio (shown in the first panel) indicates that the Sharpe ratio (and the MPR) are counter-cyclical, as they are in the data. However, the volatility of the MPR is much lower than commonly estimated.

Figure 1: Baseline Case



As would be expected, since the active traders have the most sophisticated trading technology, they earn the highest return on their investments, with an excess return of 4.64%. The diversified traders have an excess return of 1.45%. The nonparticipants, with the least sophisticated trading technology, by construction have no excess return. The active traders earn higher returns by taking more risk, as indicated by a much more volatile excess return: The standard deviation of their excess return is 12.08, while that of the diversified traders is only 3.80. The active traders achieve their high and volatile returns by heavily investing in risky assets, with equities making up 79% of their portfolios on average. Moreover, their equity exposure is very tightly connected to cyclical fluctuations in the pricing of risk; as a result, the correlation of their equity share and the Sharpe ratio on equities is 0.94.

The differences in investment returns affects the wealth distribution. The active traders accumulate more than twice as much wealth per capita as the average individual. The

Table 1: Baseline Results

| Asset Pricing | | Consumption and Wealth | |
|-----------------------------------|--------|--------------------------------|--------|
| $\frac{\sigma(m)}{E(m)}$ | 0.408 | $E(W_z/W)$ | 2.149 |
| $Std(\frac{\sigma_t(m)}{E_t(m)})$ | 2.782 | $E(W_{div}/W)$ | 1.033 |
| $E(R_f)$ | 1.926 | $E(W_{np}/W)$ | 0.836 |
| $\sigma(R_f)$ | 0.056 | $\sigma(W_z/W)$ | 0.574 |
| $E(R_z^W - R_f)$ | 4.638 | $\sigma(W_{div}/W)$ | 0.027 |
| $E(R_{div}^W - R_f)$ | 1.448 | $\sigma(W_{np}/W)$ | 0.098 |
| $\sigma(R_z^W - R_f)$ | 12.080 | $\sigma(\Delta \log(C_z))$ | 6.990 |
| $\sigma(R_{div}^W - R_f)$ | 3.798 | $\sigma(\Delta \log(C_{div}))$ | 3.631 |
| $E(\omega_z)$ | 0.790 | $\sigma(\Delta \log(C_{np}))$ | 2.552 |
| $\sigma(\omega_z)$ | 0.105 | $\sigma(\Delta \log(c_z))$ | 10.781 |
| $corr(\omega_z, SR)$ | 0.938 | $\sigma(\Delta \log(c_{div}))$ | 12.186 |
| accuracy (max % allocation error) | 0.375 | $\sigma(\Delta \log(c_{np}))$ | 12.958 |

average wealth level of diversified traders is close to average per capita wealth, while the nonparticipants on average have only 84% of per capita wealth.

When we turn to consumption, the agents with the most sophisticated trading technology have the lowest standard deviation of consumption growth, , denoted by $\sigma(\Delta \log(c_i))$, while those with the least sophisticated technology have the highest. In Table 1, the standard deviation of individual consumption growth is 10.8 for the active traders, 12.2 for the diversified traders, and 13.0 for the nonparticipants. However, when we look at the volatility of average consumption for a trader-type, denoted by $\sigma(\Delta \log(C_i))$ for traders of type i , the results are reversed. The standard deviation of the growth rate of average consumption for the active traders is 7.0, for diversified is 3.6, and for the nonparticipants it is 2.6. This is because averaging removes the impact idiosyncratic income shocks and thereby reveals that the agents with the more sophisticated trading technology are using this technology to take on more aggregate risk. Hence, their consumption fluctuations are driven more by aggregate shocks, while the reverse is true of the nonparticipants whose trading technology shields them more from aggregate risk.

The first panel of Figure 1 shows a plot of the conditional Sharpe ratio for a fixed simulation interval. In this plot, the gray bars indicate negative growth rate realizations while the white bars indicate positive realizations. One can see from the plot that the

price of risk is counter-cyclical, just as in the data, though not as much as in the data. In addition, the second and third panels of Figure 1 show plots of the average equity share and the average wealth to per-capita wealth ratio for active traders for our fixed simulation interval. It indicates that the average equity exposure is counter-cyclical, while the wealth ratio is pro-cyclical. These plots indicate the fundamental dynamics driving asset pricing in our baseline economy. The active traders absorb the aggregate risk created by investors who hold low risk assets. They do this by holding large amounts of the equity claims and low amounts of risk-free debt. At certain points, their average holdings are greater than 100%, indicating that they are shorting the risk-free security to meet its demand. At the same time, high realizations of the aggregate growth rate shock lead them to become relatively rich, while low realizations lead to the reverse. When they are relatively poor, the active traders are induced to hold large amounts of equity by a high Sharpe ratio. These fluctuations in the relative wealth of the active traders and the resulting price they demand to bear the amount of aggregate risk being pushed at them by the market leads to the aggregate dynamics in the model. If all of our traders were either active traders or passive traders who held the market, then there would be no dynamics in the stationarized economy. As a result, each group would simply "hold the market" in their portfolios and have a constant and identical consumption share. These outcomes are very similar to results reported in our earlier work; in particular CCL2011, where we discuss them in greater detail.

5 Belief Heterogeneity

In this section, we consider belief heterogeneity with respect to the aggregate shock z_t . A natural issue with respect to forming beliefs about the aggregate shock is how much to rely on the full-time series history. This is because it is unclear how strong a stationarity assumption to impose and statistically it can be difficult to determine whether and when a structural break in a time series has occurred, especially if it is fairly recent. In forecasting models, it is common practice to allow for the possibility of structural breaks by (i) using a moving window in the estimation, (ii) explicitly allowing for parameter drift, or (iii) down-weighting older observations (See Clements and Hendry (2006)). Procedures such as these lead to parameter estimates that are more responsive to recent data than to older data and suggest that this greater responsiveness can have a rational basis. We therefore allow for some traders who put more weight on recent data in forming their beliefs.

To keep things relatively simple, we assume that the operative data generating mechanism is always taken to be first-order Markov. Given this, and a belief that a structural break has occurred, a forecaster needs to use the recent data to form appropriate beliefs about the

new transition probability matrix. Two approaches present themselves.

The first approach is to use the recent data to form the MLE estimate of the transition matrix, and then couple this with a probabilistic view of the likelihood of a transition from the long-run data generating mechanism to this new data generating mechanism. To keep things tractable, we will assume that these agents only consider the possibility of a break a fixed number of periods in the past. Because the possible break will be recent, and the data will not be very informative about the likelihood of a break, we will assume that they have a fixed probability as to a break. We will refer to the agents who act in this fashion as having "volatile beliefs". The volatile-belief agents are implicitly allowing for a wide range of possible new regimes (equal to the set of all possible outcomes since the series break). But, at the same time they are ignoring parameter uncertainty and simply switching from the former MLE estimate to the new MLE estimate as their alternative to the long-run estimate as they accumulate new data. Note that our volatile-belief agents nest our rational agents, since they can be thought of as volatile-belief agents who put zero weight on the MLE estimate and weight 1 on the ergodic estimate.

The second approach is to view the data within a Bayesian perspective where one allows for several (here two) possible new transition matrices and then uses the recent data to appropriately weight these new outcomes. As in the literature, we will refer to these different transitions matrices as regimes and assume that switches between them are unobserved. We will also require that these transition matrices and the agent's overall beliefs about how we switch from one regime to another is consistent with long-run facts from the data. As a result, these agent's beliefs will nest the ergodic if we assume appropriate i.i.d. probabilities for the regimes. We will refer to agents who form beliefs in this fashion as "Bayesian regime-switchers". Note that unlike the volatile-belief agents, the Bayesian regime-switchers are not using the data to directly infer the nature of the operative transition matrix. Instead, they are using the data to infer which of the possible data transition matrices are operative.

Both the Volatile-belief and Bayesian regime-switchers become more (less) optimistic about future realizations of the aggregate growth rate z_t after seeing a large (small) number of recent high growth occurrences. This leads them to become more (less) optimistic about future income, dividend and equity price growth since all of these outcomes are associated with high z_t realizations. Their optimism does not rely on a misunderstanding of the equilibrium relationships implied by the model, nor does it rely on some sort of implicit bubble in asset prices. Rather, it stems from optimism with respect to the fundamentals that drive the model. Conditional on a sequence of high aggregate growth shocks, the outcomes are completely in line with their expectations, moreover they also correctly anticipate that if instead a sequence of low growth are realized what will result. They simply miss-estimate

the likelihood of these different outcomes relative to the ergodic data generating device. As a result, they are aware of their conditional risks. This distinguishes our approach from that of Long, Shleifer, Summers, and Waldman (1990) or Barberis, Greenwood, Jin, and Shleifer (2013), whose traders rely on short-term price extrapolation.

We focus on the impact of belief heterogeneity with respect to our active traders who are choosing not only how much to save but also their portfolio holdings. We do this because fluctuations in beliefs about the future realization of z_{t+1} are likely to affect both these decisions and therefore the impact of belief heterogeneity is maximized.

5.1 Volatile Aggregate Belief Traders

5.1.1 Definition

Definition 1. *A trader with volatile beliefs (VB) believes with probability κ the current aggregate transition $z_t \rightarrow z_{t+1}$ is governed by $\pi(z_{t+1}|z^t)$ and with probability $1 - \kappa$ it is governed by a new Markov transition matrix about which he has a uninformative prior. Conditional on the occurrence of a shift in the transition matrix, his best estimate of the new transition matrix would be the empirically observed transition frequencies since the assumed potential shift date $t - j$. Let $\Pi(\cdot|\cdot; z_{t-j}^t)$ denote these conditional transition frequencies for the history z_{t-j}^t . Then, the trader's conditional probability distribution over z_{t+1} would be given by*

$$\tilde{\pi}(z_{t+1}|z^t) = \kappa\pi(z_{t+1}|z^t) + (1 - \kappa)\Pi(z_{t+1}|z_t; z_{t-j}^t).^9$$

The volatility of beliefs is governed by the parameter κ . With $\kappa = 1$, these traders rely solely on the ergodic transition probabilities and have stable beliefs that do not vary over time. With $\kappa = 0$, they are using a rolling window that completely ignores older data. With $\kappa \in (0, 1)$, traders with VB down weight older data through the use of two tiers: older than j years and j years or less.

5.1.2 Volatile Belief Experiment

The first experiment involves giving half of our active traders slightly volatile beliefs. We set the belief parameter to $\kappa = 0.75$, which implies that 75% of the probability mass is placed upon the ergodic transition matrix, while the remaining 25% is placed on the observed transition frequencies during the past 5 years. The results are reported in the second column of Table 2 and in Figure 2.

The first and second columns of Table 2 show that the average MPR and the average risk-free rate change little. However, the volatility of the MPR increases by a factor of 3. The

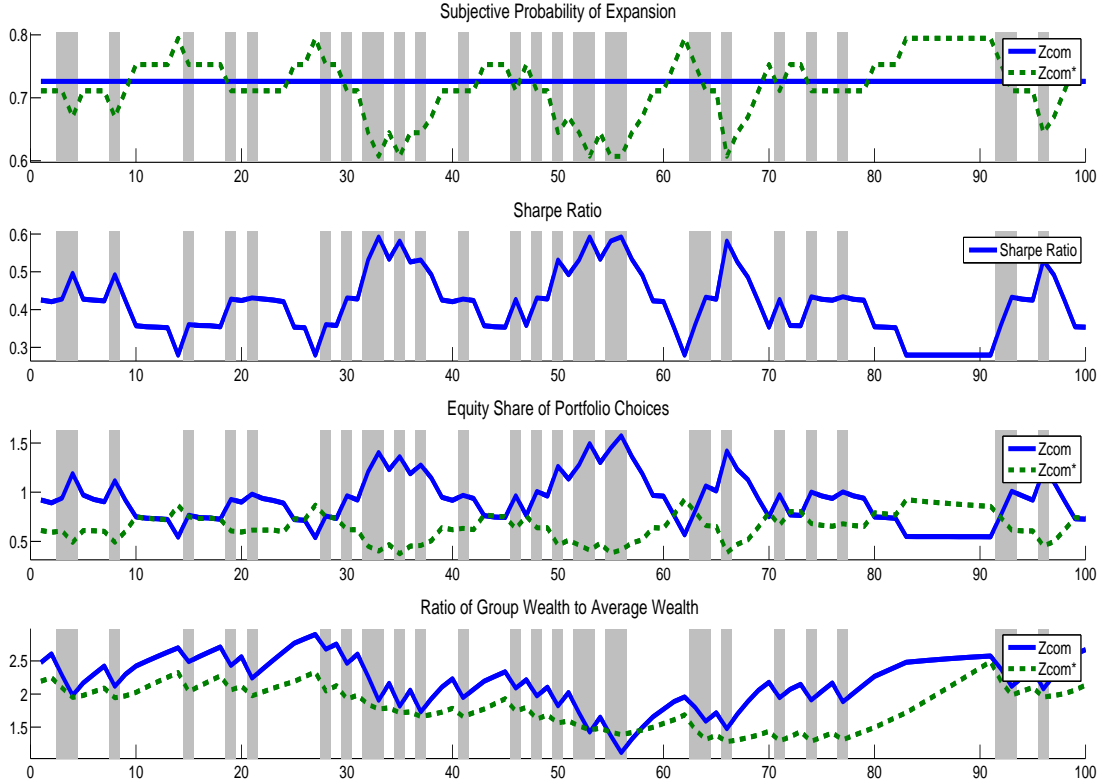
Table 2: Results of Heterogeneous Belief and Low-Patience Cases

| Cases | Baseline | Volatile Belief | BRS Belief | Low Patience |
|-----------------------------------|----------|-----------------|---------------|-----------------|
| Z^* -com feature | | $\kappa = 0.75$ | $\rho = 0.85$ | $\beta = 0.925$ |
| Fraction of Traders | | | | |
| Z com | 10% | 5% | 5% | 5% |
| Z^* com | 0% | 5% | 5% | 5% |
| Asset Pricing | | | | |
| $\frac{\sigma(m)}{E(m)}$ | 0.408 | 0.419 | 0.417 | 0.416 |
| $Std(\frac{\sigma_t(m)}{E_t(m)})$ | 2.782 | 8.574 | 9.267 | 2.782 |
| $E(R_f)$ | 1.926 | 2.037 | 2.040 | 1.975 |
| $\sigma(R_f)$ | 0.056 | 0.401 | 0.472 | 0.076 |
| Wealth Returns | | | | |
| $E(R_z^W - R_f)$ | 4.638 | 5.115 | 5.039 | 4.852 |
| $E(R_{z^*}^W - R_f)$ | NA | 3.299 | 3.504 | 5.150 |
| $\sigma(R_z^W - R_f)$ | 12.080 | 13.107 | 13.037 | 12.384 |
| $\sigma(R_{z^*}^W - R_f)$ | NA | 9.302 | 9.822 | 13.147 |
| $E(W_z/W)$ | 2.149 | 2.396 | 2.357 | 2.384 |
| $E(W_{z^*}/W)$ | NA | 1.880 | 1.864 | 1.561 |
| $\sigma(W_z/W)$ | 0.574 | 0.544 | 0.545 | 0.675 |
| $\sigma(W_{z^*}/W)$ | NA | 0.476 | 0.483 | 0.401 |
| Portfolio Choices | | | | |
| $E(\omega_z)$ | 0.790 | 0.900 | 0.878 | 0.822 |
| $E(\omega_{z^*})$ | NA | 0.663 | 0.699 | 0.872 |
| $\sigma(\omega_z)$ | 0.105 | 0.257 | 0.255 | 0.113 |
| $\sigma(\omega_{z^*})$ | NA | 0.139 | 0.148 | 0.120 |
| $corr(\omega_z, SR)$ | 0.938 | 0.982 | 0.978 | 0.914 |
| $corr(\omega_{z^*}, SR)$ | NA | -0.974 | -0.867 | 0.943 |
| Consumption | | | | |
| $\sigma(\Delta \log(C_z))$ | 6.990 | 7.152 | 7.118 | 7.118 |
| $\sigma(\Delta \log(C_{z^*}))$ | NA | 6.955 | 7.004 | 7.059 |
| $\sigma(\Delta \log(c_z))$ | 10.781 | 10.463 | 10.517 | 10.648 |
| $\sigma(\Delta \log(c_{z^*}))$ | NA | 11.059 | 11.197 | 12.528 |
| Computation Accuracy | | | | |
| Max allocation error (%) | 0.375 | 0.284 | 0.256 | 0.384 |

Note: BRS: Bayesian regime-switching beliefs

increased volatility in asset prices widens the gap of the excess returns among our traders. The average excess return of the standard active traders rises to 5.1%, while that of the VB traders falls to 3.3%. The lower excess return for the VB traders is due in part to the fact that their average equity share is much lower than in the benchmark case. At the same time, this forces the average equity share of the standard active traders to rise to 0.90. Note also

Figure 2: Volatile Belief Experiment



Note: The shaded areas indicate recessions.

that the average equity share of the VB traders is more stable, with a standard deviation of 0.14, while that of the standard active traders is higher at 0.26. When we compute the Sharpe ratio using the ergodic probabilities, we find that the correlation of their equity share with the Sharpe ratio is the mirror image of the normal active traders: -0.974 vs. $+0.982$. Thus, the VB traders are systematically mistiming the market and this also depresses the excess return on their portfolio. At the same time, the standard deviation of their excess return is also substantially lower than that of the standard active traders: 9.3% vs. 13.1%. However, the fact that their equity share is more stable means that the extent to which they move their equity share the wrong direction is not that large.

The differences in returns leads to differences in wealth accumulation and consumption for our two types of active traders. The average ratio of the per capita wealth of our standard active traders to overall per capita wealth is 2.4 and that of the VB traders is 1.9, while the

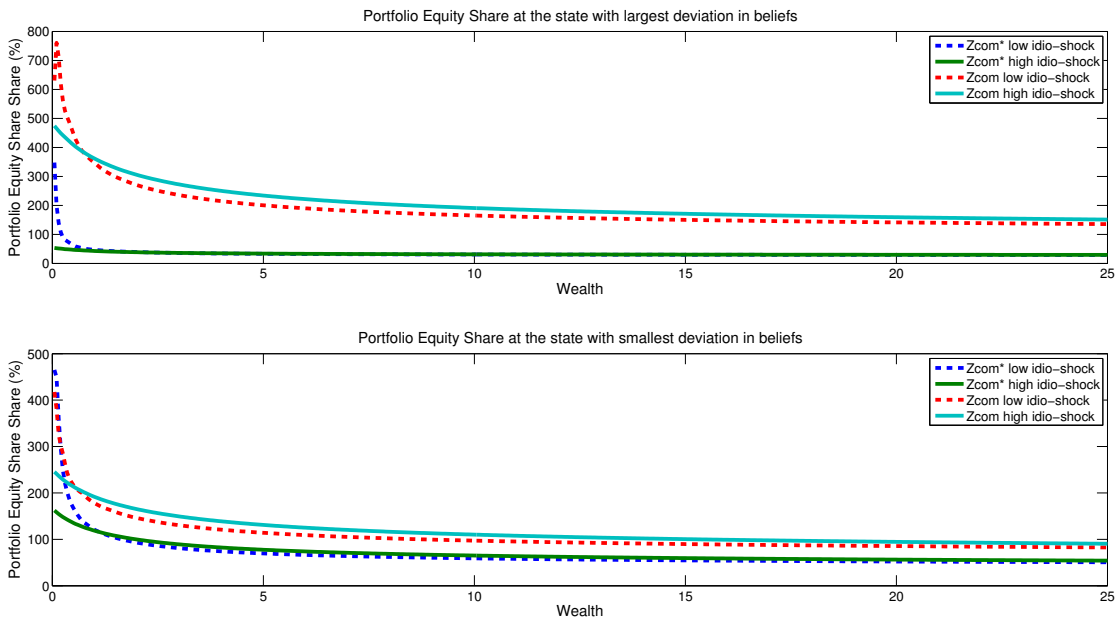
standard deviation of this ratio is 0.54 and 0.48, respectively. Interestingly, the standard deviations of consumption growth are both very similar, which indicates a similar degree of overall consumption smoothing. In addition, the volatility of the ratio of group average consumption to per capita consumption are also very similar, which indicates that their exposure to aggregate risk is very close.

To better understand the dynamics in this first experiment, we display some key series from the same fixed interval in the simulation panel in Figure 2. The first panel shows the probability that the two types of active traders assign to the event that the next period aggregate growth rate shock is high. Because we assume that the growth rate shocks are i.i.d., this probability is constant for our normal active traders but pro-cyclical for our VB active traders. However, the fluctuations are fairly modest, staying between 0.80 and 0.60 and often near the 0.72 ergodic probability. The second panel shows the conditional Sharpe ratio, which indicates that the VB traders' probability and the Sharpe ratio are strongly negatively correlated. This negative correlation means that the pricing of risk and the likelihood of a good outcome are moving in opposite directions for these traders, which simultaneously explains the low and stable equity shares for them relative to the normal active traders in the third panel. It is interesting to note that the VB traders appear to exhibit momentum trading: Their equity share rises after a series of good shocks/returns and falls when the reverse is true. The final panel shows how the per capita wealth levels for these two types of traders (relative to the average per capita wealth) evolve. It is easy to see that the VB traders have lower and smoother wealth levels.

To get more perspective on individual level behavior, we also examined how the trader's policy rules vary with wealth. In Figure 3 we plot the equity share as a function of wealth for both the rational and the volatile-belief types. We do this for two history states, one where beliefs are very close and one where they are very far apart. First, both types of traders have the highest equity share at wealth levels very near the lower bound, and they decline with wealth. This is because, with zero financial wealth, aggregate risk exposure is coming solely through the individual's non-tradeable income, and the exposure level is equivalent to holding the market. To put this another way, exposure to aggregate risk is highly rewarded. At high wealth levels, the trader's aggregate risk level is essentially determined by his financial portfolio composition which is skewed towards equities, while at low wealth levels the exposure to aggregate risk coming through income is more important. Thus, at low income level the individual actually holds more equities in his financial portfolio to offset the lower aggregate risk exposure coming through his non-tradeable income. The gap in equity exposure is largest in the state in which there is the largest belief disagreement. In this state, the low probability that the volatile-belief type attaches to a high aggregate

shock substantially dampens his equity investment, especially at low wealth levels.

Figure 3: Portfolio Equity Share



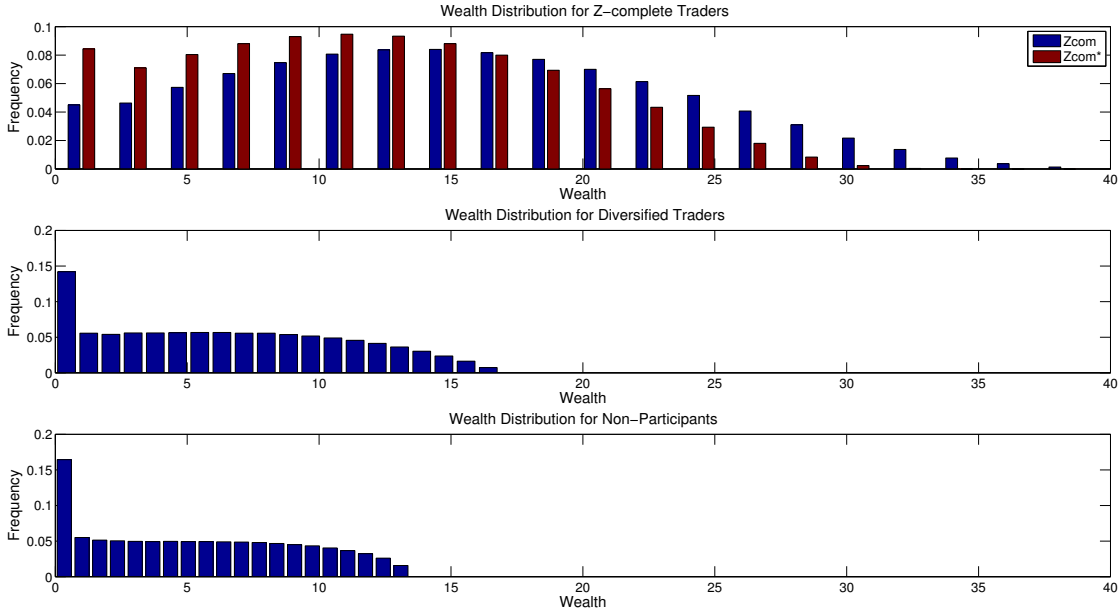
In Figure 4 we plotted the ergodic wealth distribution by type. For the active traders, the wealth distributions look roughly log-normal and are similar except in the right tail. Only the rational active traders become extremely wealthy, where that is taken to be a wealth level more than 30 times aggregate income. The wealth distributions for the two types of passive traders look different from each other and from the active traders. Both traders have large masses of individuals near the net wealth bound of 0, and this is particularly pronounced for non-participants. Also, the upper limit on their wealth is much lower than for the active traders; again this more pronounced for non-participants.

5.2 Bayesian Regime-Switching Beliefs

5.2.1 Definition

Here we consider an environment where some households assume that the aggregate growth shock $\{z_t\}$ follows a simple regime-switching process. Just as in the baseline calibration, the observed growth rate takes on two values, $z_t \in \{z_h, z_l\}$, where $z_h > z_l$. The households believe that with evolution of the growth rate is governed by a two state process in which

Figure 4: Wealth Distribution by Type



the probability of the high growth rate is π_h in the high regime and π_l in the low regime, where $\pi_h > \pi_l$. The regime state, $s_t \in \{h, l\}$, follows a simple Markov transition process, with the probability that $s_{t+1} = s_t$ is ρ , and hence the probability of a switch is $1 - \rho$. We assume that the regime cannot be observed, only the realized sequence of growth rates z^t . These households use the observed history to infer the probability of the regime being high or low. Using Bayes' rule, these probabilities have a simple recursive relationship. We therefore refer to such households as having Bayesian regime-switching beliefs (BRS). This recursive relationship leads households to place less weight on distant observations. The rate at which this weight declines with time is slower the closer ρ is to 1 and steeper the closer ρ is to 0.5.

Here we construct the recursive relationship that governs a BRS household's belief that the regime is high. Denote the probability of a high growth state conditional on z^t by $\omega_t = \Pr(s_t = h | z^t)$. We want to derive a simple recursive relationship to allow us to update ω_{t+1} given ω_t and z_{t+1} .

Starting from Bayes rule,

$$\begin{aligned}
p(s_{t+1}|z^{t+1}) &= p(s_{t+1}|z_{t+1}, z^t) = \frac{p(z_{t+1}|s_{t+1})p(s_{t+1}|z^t)}{p(z_{t+1}|z^t)} \\
&= \frac{p(z_{t+1}|s_{t+1}) \sum_{s_t} p(s_{t+1}, s_t|z^t)}{\sum_{s_t} p(z_{t+1}, s_t|z^t)} \\
&= \frac{p(y_{t+1}|s_{t+1}) \sum_{s_t} p(s_{t+1}|s_t)p(s_t|z^t)}{\sum_{s_t} p(z_{t+1}|s_t, z^t)p(s_t|z^t)}.
\end{aligned}$$

Rewriting yields

$$\begin{aligned}
\omega_{t+1} &= \frac{\pi_h [\rho\omega_t + (1 - \rho)(1 - \omega_t)]}{\pi_h [\rho\omega_t + (1 - \rho)(1 - \omega_t)] + \pi_l [(1 - \rho)\omega_t + \rho(1 - \omega_t)]} \text{ if } z_{t+1} = z_h, \text{ and} \\
\omega_{t+1} &= \frac{(1 - \pi_h) [\rho\omega_t + (1 - \rho)(1 - \omega_t)]}{(1 - \pi_h) [\rho\omega_t + (1 - \rho)(1 - \omega_t)] + (1 - \pi_l) [(1 - \rho)\omega_t + \rho(1 - \omega_t)]} \text{ if } z_{t+1} = z_l.
\end{aligned}$$

Using this simple recursion, we can compute the implied probability that the regime is h , and this probability summarizes the relevant history for forecasting s_{t+1} in a single statistic. This statistic will increase in the frequency of high draws. By manipulating the probability ρ , we are in essence playing around with the volatility of beliefs. For $\rho = 1$ or $\rho = 0.5$, we have completely stationary beliefs, while for $0.5 < \rho < 1$, there is a dependence on past history, which makes beliefs vary across the realization of past aggregate shocks.

Formally, because the regime-switching model has a great deal of structure, one should be able to test it and reject it if the data were generated by an i.i.d. process for z_t . To overcome this objection, we find it useful to think of the data as only recently being determined by the regime-switching model. In this case, our version of regime-switching is something of a hybrid between the volatile-belief model and a true regime-switching model. This interpretation is consistent with our truncation of the data used in the recursion.

5.2.2 Bayesian Regime-Switching Belief Experiment

This experiment involves giving half of our active traders Bayesian regime-switching belief. To maintain tractability, we assume that the households use only the most recent j observations in forming their beliefs.¹⁰ We set the belief parameters as $\rho = 0.85$, $\pi_h = 0.9$, and $\pi_l = 0.552$. Given this setting, we find that the beliefs of BRS traders are fairly close to those of VB traders. Therefore, their behavior is also fairly close, and hence the results of this experiment are quite similar. The asset pricing results are almost identical. (See Table

¹⁰Because we only use a finite history and assume the ergodic distribution as a starting point for the recursion, our BRS trader makes forecast errors relative to a Bayesian updater who used the whole history. These errors averaged 2 percentage points in our simulation panel.

2) Similarly, traders with BRS beliefs earn a lower return on their wealth and end up poorer than our standard active traders with correct beliefs. However, the return of BRS traders is higher than for either type of passive trader and they end up much richer as a result. The consumption and portfolio behaviors of BRS traders are very similar to those of VB traders.

5.2.3 When the "Crazy"-Types Are Right

The BRS traders have a single model of the stochastic generating process that is consistent with long-run moments from the data. (It is only inconsistent with short-run correlations.) The VB traders have in effect multiple models, none of which need be consistent with the long-run moments from the data. It therefore seems natural to use the BRS data generating device to examine its implications. This turns out to be fairly easy. We simply change the stochastic process generating the aggregate shocks, $\{z_t\}$, redraw the aggregate shocks for our panel, and recompute the equilibrium. Because our finite aggregate history accurately summarize the internal dynamics, the updating rule for the multiplier moment ratio, H , is very similar to the BRS or VB experiment, and the major change is to the transition probabilities for our finite aggregate histories. Because the aggregate shocks now exhibit positive persistence, the main impact of this change in the transition probabilities is to increase the likelihood of more extreme history states with a large number of either high or low shocks.

We do two experiments with the BRS aggregate stochastic process. In the first, half of active traders and all passive traders are standard (i.e., they assume that z_t is generated by our i.i.d. version of Mehra and Prescott (1985) while half of the active traders are VB traders. In the second experiment, we change half of our active trader to have BRS traders, while keeping the rest standard. The results are reported in Table 3. As before, the two experiments yield similar outcomes despite the change in the aggregate shock process. (Note that we are computing the conditional Sharpe ratio using the ergodic probabilities.)

The greater frequency of sustained high or low growth shock realizations leads to more frequent large swings in the beliefs of our VB and BRS traders. This (i) modestly reduces the negative correlation of their group average equity investment share with the conditional Sharpe ratio and (ii) slightly reduces the volatility of their average equity share but leaves their portfolio behavior largely unchanged. The impact on asset prices is fairly modest, though there is a slight increase in volatility of the pricing of risk. With respect to realized returns, those of the standard active traders fall slightly, whereas those of the VB and BRS traders rise very slightly. This leads the average ratio of standard active trader wealth to per capita wealth to fall slightly, while that of VB and BRS traders rises slightly. This in turn leads to a slight increase in the volatility of the standard active trader's volatility

of consumption growth and a decrease in the nonstandard trader's. At the same time, the impact the lower (higher) wealth levels decreases (increases) the impact of aggregate fluctuations on consumption.

6 Less Patient Traders

This quantitative experiment involves lowering the discount rate for half of our active traders from 0.95 to 0.925, thereby making them less patient (LP) than the normal active traders. Surprisingly, this change has little impact on the outcomes at either the aggregate or the individual level. The last column of Table 2 shows the results.

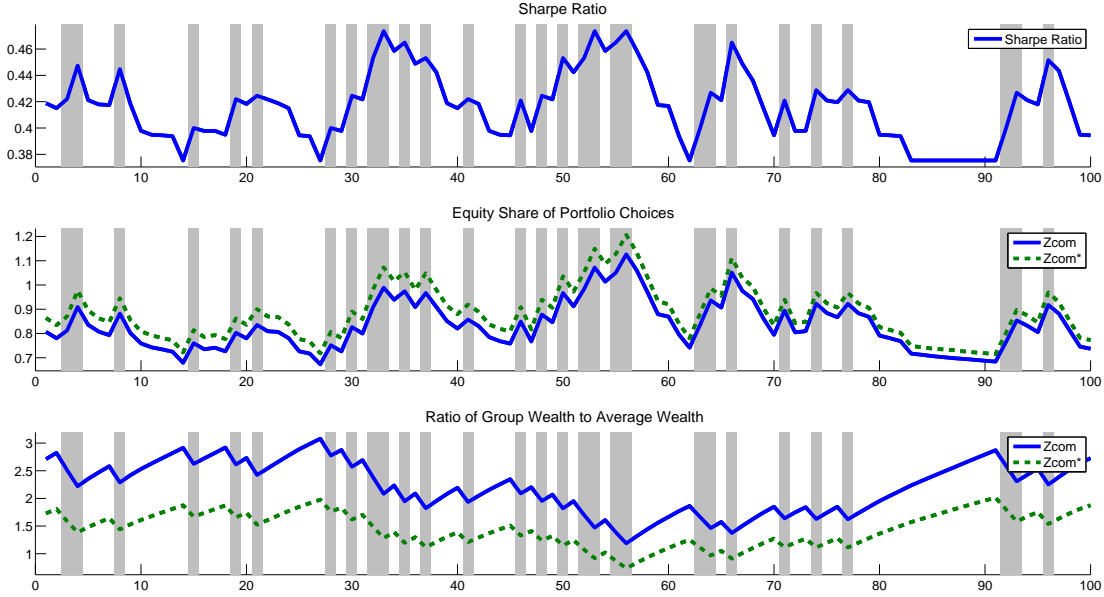
At the aggregate level, asset prices were virtually unchanged relative to the baseline model. At the individual level, the two types of active traders had very similar average equity shares, similar volatility in their equity shares, and a similar correlation of their equity share and the Sharpe ratio. The LP traders had a lower and less volatile per capita wealth, and their consumption growth rate was more volatile. However, the volatility of the average growth rate of consumption for the two groups was very similar, reflecting the fact that they had similar exposure to aggregate risk. The similarity in the outcomes of the two types of traders and the level differences in wealth can be seen clearly in the second and third panels of Figure 5.

To understand what is occurring here, note the following. The fact that both type of traders have similar exposure to idiosyncratic risk and the same borrowing constraint leads to similar demands for precautionary saving. However, differences in patience imply differences in the extent to which the low risk-free rate leads to a downward drift in the per capita wealth. As a result, the point at which the two forces offset is lower for the LP traders and hence their average wealth level is also lower.

7 Risk Aversion versus Intertemporal Elasticity Substitution

In this section, we indicate how our methodology can be extended to allow for recursive preferences that distinguish between the degree of risk aversion (RA) and the intertemporal elasticity of substitution (IES). We then use this extension to examine the implications of these variations for our economy.

Figure 5: Less Patient Traders



Note: The shaded areas indicate recessions.

7.1 Recursive Preferences

To extend our methodology to allow for households with different recursive preferences, assume that a type i household has recursive preferences along the lines of Epstein and Zin (1989) and these preferences are given by

$$V_t = [(1 - \beta)c_t^{1-\rho} + \beta (\mathcal{R}_t V_{t+1})^{1-\rho}]^{\frac{1}{1-\rho}},$$

where \mathcal{R}_t denotes the operator

$$\mathcal{R}_t V_{t+1} = \left\{ \sum_{(z^t, \eta^t) \preceq (z^{t+1}, \eta^{t+1})} V_{t+1}(z^{t+1}, \eta^{t+1})^{1-\alpha} \tilde{\pi}(z^{t+1}, \eta^{t+1} | z^t, \eta^t) \right\}^{\frac{1}{1-\alpha}}.$$

With these preferences, ρ controls the substitutability between consumption today and future utility as measured by V_{t+1} , and α controls the willingness to have future utility vary across states of the world tomorrow (i.e., risk). To economize on notation, we do not index ρ , α , and β by i ; however, it should be understood that they can differ with the trader's type.

We can replace the objective in Trader i 's problem (6) with this objective. We can then

Table 3: Results of Heterogeneous Belief under Bayesian Shock Process

| Cases | Baseline | Volatile Belief | BRS Belief |
|-----------------------------------|----------|-----------------|---------------|
| Z^* -com feature | | $\kappa = 0.75$ | $\rho = 0.85$ |
| Fraction of Traders | | | |
| Z com | 10% | 5% | 5% |
| Z^* com | 0% | 5% | 5% |
| Asset Pricing | | | |
| $\frac{\sigma(m)}{E(m)}$ | 0.408 | 0.421 | 0.424 |
| $Std(\frac{\sigma_t(m)}{E_t(m)})$ | 3.617 | 10.052 | 10.755 |
| $E(R_f)$ | 1.932 | 2.084 | 2.093 |
| $\sigma(R_f)$ | 0.107 | 0.486 | 0.560 |
| Wealth Returns | | | |
| $E(R_z^W - R_f)$ | 4.608 | 4.874 | 4.791 |
| $E(R_{z^*}^W - R_f)$ | NA | 3.724 | 3.805 |
| $\sigma(R_z^W - R_f)$ | 12.112 | 13.717 | 13.677 |
| $\sigma(R_{z^*}^W - R_f)$ | NA | 9.267 | 9.423 |
| $E(W_z/W)$ | 2.176 | 2.095 | 2.026 |
| $E(W_{z^*}/W)$ | NA | 2.171 | 2.210 |
| $\sigma(W_z/W)$ | 0.670 | 0.549 | 0.556 |
| $\sigma(W_{z^*}/W)$ | NA | 0.622 | 0.630 |
| Portfolio Choices | | | |
| $E(\omega_z)$ | 0.799 | 0.927 | 0.924 |
| $E(\omega_{z^*})$ | NA | 0.701 | 0.718 |
| $\sigma(\omega_z)$ | 0.155 | 0.354 | 0.342 |
| $\sigma(\omega_{z^*})$ | NA | 0.109 | 0.139 |
| $corr(\omega_z, SR)$ | 0.940 | 0.969 | 0.970 |
| $corr(\omega_{z^*}, SR)$ | NA | -0.886 | -0.736 |
| Consumption | | | |
| $\sigma(\Delta \log(C_z))$ | 6.901 | 7.085 | 7.114 |
| $\sigma(\Delta \log(C_{z^*}))$ | NA | 6.848 | 6.849 |
| $\sigma(\Delta \log(c_z))$ | 10.782 | 11.009 | 11.178 |
| $\sigma(\Delta \log(c_{z^*}))$ | NA | 10.510 | 10.467 |
| Computation Accuracy | | | |
| Max allocation error (%) | 0.445 | 0.309 | 0.319 |

determine the first-order condition by recursive constructing of the derivative of V_t with respect to $c(z^t, \eta^t)$ as

$$\frac{\partial V_t}{\partial c_{t+1}(z^{t+1}, \eta^{t+1})} = V_t^\rho (1 - \beta) M_{t+1} c_{t+1}^{-\rho} \tilde{\pi}(z^{t+1}, \eta^{t+1} | z^t, \eta^t),$$

where

$$M_{t+1}(z^{t+1}, \eta^{t+1}) = \beta \left(\frac{V_{t+1}(z^{t+1}, \eta^{t+1})}{\mathcal{R}_t V_{t+1}} \right)^{\rho - \alpha}.$$

By backward induction, we get

$$\frac{\partial V_0}{\partial c_{t+1}(z^{t+1}, \eta^{t+1})} = V_0^\rho \mathcal{M}_{t+1}(z^{t+1}, \eta^{t+1}) (1 - \beta) c_{t+1}(z^{t+1}, \eta^{t+1})^{-\rho} \pi(z^{t+1}, \eta^{t+1}),$$

where

$$\mathcal{M}_{t+1}(z^{t+1}, \eta^{t+1}) = \prod_{(z^\tau, \eta^\tau) \preceq (z^{t+1}, \eta^{t+1})} M_\tau(z^\tau, \eta^\tau).$$

With these results, we can write the first-order condition for our trader's consumption $c_t(z^t, \eta^t)$ as

$$\begin{aligned} & V_0^\rho \mathcal{M}_t(z^t, \eta^t) (1 - \beta) c_t(z^t, \eta^t)^{-\rho} \tilde{\pi}(z^t, \eta^t) \\ &= \zeta(z^t, \eta^t) P(z^t) \pi(z^t, \eta^t). \end{aligned} \quad (14)$$

The recursive rule for the multiplier ζ is still (7), and the first order condition with respect to $\sigma(z^t, \eta^t)$ is still given by (9) or (10).

The mapping between the type i trader and his reference trader is easy to compute and is given by solving the following equation for $\bar{\zeta}(z^t, \eta^t)$:

$$c_t(z^t, \eta^t) = \left[\frac{\zeta(z^t, \eta^t) P(z^t) \pi(z^t, \eta^t)}{V_0^\rho \mathcal{M}_t(z^t, \eta^t) (1 - \beta) \tilde{\pi}(z^t, \eta^t)} \right]^{-1/\rho} = \left[\frac{\bar{\zeta}(z^t, \eta^t) P(z^t)}{\beta^t} \right]^{-1/\bar{\alpha}}. \quad (15)$$

Note that this mapping trick carries through even with different beliefs across traders.

7.2 Quantitative Experiments

We can now use our model as a laboratory to examine the implication of different RA and IES. We consider three quantitative experiments. The first experiment lowers the risk aversion (RA) for half of our active traders from 5 to 2.5. The second experiment increases the intertemporal elasticity of substitution (IES) from 0.2 to 0.4. The third experiment combines both of these shifts by changing the exponential coefficient within standard CRRA preferences from 5 to 2.5. The results are reported in Table 4.

The findings for these experiments are shown below:

1. Changes in the IES have a very modest impact. Asset prices and portfolio behavior are largely unchanged.

Table 4: Risk Aversion versus Intertemporal Elasticity of Substitution

| Cases | Baseline | Lower RA | Higher IES | Low RA and High IES |
|---|----------|----------|------------|---------------------|
| Fraction of Traders | | | | |
| Z complete: $\gamma = 5, IES = 1/5$ | 10% | 5% | 5% | 5% |
| Z^* complete: $\gamma = 2.5, IES = 1/5$ | 0% | 5% | 0% | 0% |
| Z^* complete: $\gamma = 5, IES = 1/2.5$ | 0% | 0% | 5% | 0% |
| Z^* complete: $\gamma = 2.5, IES = 1/2.5$ | 0% | 0% | 0% | 5% |
| Asset Pricing | | | | |
| $\frac{\sigma(m)}{E(m)}$ | 0.408 | 0.312 | 0.403 | 0.300 |
| $Std(\frac{\sigma(m)}{E(m)})$ | 2.782 | 3.712 | 2.670 | 3.406 |
| $E(R_f)$ | 1.926 | 2.397 | 1.993 | 2.469 |
| $\sigma(R_f)$ | 0.056 | 0.120 | 0.075 | 0.146 |
| Wealth Returns | | | | |
| $E(R_z^W - R_f)$ | 4.638 | 2.723 | 4.596 | 2.464 |
| $E(R_{z^*}^W - R_f)$ | NA | 6.521 | 4.863 | 6.457 |
| $\sigma(R_z^W - R_f)$ | 12.080 | 9.414 | 12.149 | 8.865 |
| $\sigma(R_{z^*}^W - R_f)$ | NA | 22.547 | 12.858 | 23.251 |
| $E(W_z/W)$ | 2.149 | 1.470 | 2.122 | 1.421 |
| $E(W_{z^*}/W)$ | NA | 1.623 | 1.929 | 1.577 |
| $\sigma(W_z/W)$ | 0.574 | 0.194 | 0.563 | 0.174 |
| $\sigma(W_{z^*}/W)$ | NA | 0.952 | 0.499 | 0.884 |
| Portfolio Choices | | | | |
| $E(\omega_z)$ | 0.790 | 0.615 | 0.809 | 0.598 |
| $E(\omega_{z^*})$ | NA | 1.469 | 0.855 | 1.559 |
| $\sigma(\omega_z)$ | 0.105 | 0.137 | 0.111 | 0.131 |
| $\sigma(\omega_{z^*})$ | NA | 0.374 | 0.126 | 0.423 |
| $corr(\omega_z, SR)$ | 0.938 | 0.986 | 0.926 | 0.986 |
| $corr(\omega_{z^*}, SR)$ | NA | 0.906 | 0.921 | 0.893 |
| Consumption | | | | |
| $\sigma(\Delta \log(C_z))$ | 6.990 | 5.458 | 6.900 | 5.274 |
| $\sigma(\Delta \log(C_{z^*}))$ | NA | 9.599 | 7.247 | 10.156 |
| $\sigma(\Delta \log(c_z))$ | 10.781 | 11.549 | 10.813 | 11.621 |
| $\sigma(\Delta \log(c_{z^*}))$ | NA | 17.775 | 11.053 | 17.466 |
| Computation Accuracy | | | | |
| Max allocation error (%) | 0.375 | 0.777 | 0.359 | 0.703 |

2. Changes in RA have a big impact. The pricing of risk falls sharply, though its variability rises. This is driven by the increased willingness of our low RA traders to absorb aggregate risk, which in turn leads to their earning higher excess returns. However, the reduction in their precautionary motive to save leads them to accumulate less wealth. Combined with their more aggressive portfolio behavior, this leads to an increase in both

their individual consumption volatility and their group average consumption volatility as measured by the standard deviation of the growth of consumption.

3. Changing the CRRA coefficient generates results consistent with the individual component changes. Because changing the IES does very little, the results look very similar to the RA results.

8 Conclusion

We develop aggregation results for an economy with heterogeneous preferences and beliefs, as well as different portfolio trading restrictions. These aggregation results allows us to readily compute the equilibria of our economy when there are many agents and many types, and when these agents face both idiosyncratic and aggregate income risk. To develop this aggregation result, we exploit an analytic trick in which we construct a "twin planning economy" in which appropriately chosen planning weights result in the twin's consumption being identical to that in the original economy given the same history state and state price for consumption. Using this construction we are able to derive the appropriate change of variables to recover the aggregation results that we previously derived for economies with homogenous preferences and identical beliefs. This analytic trick is fairly general. As one illustration of this, we consider recursive preferences along the lines of Epstein and Zin (1989) to evaluate the impact of different attitudes toward risk and willingness to intertemporally substitute.

One general finding in all our experiments is that traders who have incorrect beliefs, are more myopic, or earn lower returns because of higher risk aversion do not become economically irrelevant over time. The combination of their net wealth bound and their exposure to idiosyncratic risk leads to a strong precautionary motive to save, and this makes them economically important in the long run. The flip side of this finding is that the low average value of the stochastic discount factor exerts a downward drift on traders' wealth, which prevents traders who have rational beliefs, are more patient, or earn higher returns because of lower risk aversion from accumulating wealth without bound. Instead, it is primarily the level of their average excess returns and the strength of their precautionary saving motive that determine how rich these traders are on average. Higher average returns and a stronger precautionary motive do raise average wealth but only to a limited degree.

A second general finding is that anything that forces a subset of our active traders to absorb more aggregate risk while not lowering their risk aversion leads to an increase in the average price of risk. Additionally, greater cyclical fluctuations in their wealth relative to the

extent of aggregate risk they are absorbing leads to greater cyclical volatility in the pricing of risk.

References

- ABEL, A. B. (1999): “Risk Premia and Term Premia in General Equilibrium,” *Journal of Monetary Economics*, 43, 3–33.
- AIYAGARI, S. R., A. MARCET, T. J. SARGENT, AND J. SEPPALA (2002): “Optimal Taxation without State-Contingent Debt,” *Journal of Political Economy*, 110(6), 1220–1254.
- BANSAL, R., AND A. YARON (2004): “Risks for the Long Run: A Potential Resolution of Asset Pricing Puzzles,” *The Journal of Finance*, 59, 1481–1509.
- BARBERIS, N., R. GREENWOOD, L. JIN, AND A. SHLEIFER (2013): “X-CAPM: An Extrapolative Capital Asset Pricing Model,” .
- BASAK, S., AND D. CUOCO (1998): “An Equilibrium Model with Restricted Stock Market Participation,” *Review of Financial Studies*, 11(2), 309–341.
- BEKER, P. F., AND E. ESPINO (2011): “The dynamics of efficient asset trading with heterogeneous beliefs,” *Journal of Economic Theory*, 146(1), 189–229.
- BEKER, P. F., AND E. ESPINO (2013): “Too Good to Be True: Asset Pricing Implications of Pessimism,” The Warwick Economics Research Paper Series (TWERPS).
- BHAMRA, H. S., AND R. UPPAL (2006): “The role of risk aversion and intertemporal substitution in dynamic consumption-portfolio choice with recursive utility,” *Journal of Economic Dynamics and Control*, 30(6), 967–991.
- BHAMRA, H. S., AND R. UPPAL (2013): “Asset Prices with Heterogeneity in Preferences and Beliefs,” CEPR Discussion Papers.
- BLUME, L., AND D. EASLEY (2006): “If You’re so Smart, why Aren’t You Rich? Belief Selection in Complete and Incomplete Markets,” *Econometrica*, 74(4), 929–966.
- BOROVICKA, J. (2013): “Survival and long-run dynamics with heterogeneous beliefs under recursive preferences,” Working Paper, New York University.
- BRUMM, J., AND F. KUBLER (2013): “Applying Negishis method to stochastic models with overlapping generations,” Working Papers, University of Zurich.
- CHIEN, Y., H. COLE, AND H. LUSTIG (2011): “A Multiplier Approach to Understanding the Macro Implications of Household Finance,” *Review of Economic Studies*, 78(1), 199–234.

- CHIEN, Y., H. COLE, AND H. LUSTIG (2012): “Is the Volatility of the Market Price of Risk Due to Intermittent Portfolio Rebalancing?,” *American Economic Review*, 102(6), 2859–96.
- CHIEN, Y., AND H. LUSTIG (2010): “The Market Price of Aggregate Risk and the Wealth Distribution,” *Review of Financial Studies*, 23(4), 1596–1650.
- CLEMENTS, M. P., AND D. F. HENDRY (2006): *Forecasting with Breaks* chap. 12, pp. 605–657, Handbook of Economic Forecasting. Elsevier, North Holland.
- COLE, H., AND F. KUBLER (2012): “Recursive Contracts, Lotteries and Weakly Concave Pareto Sets,” *Review of Economic Dynamics*, 15(4), 479–500.
- CUOCO, D., AND H. HE (2001): “Dynamic Aggregation and Computation of Equilibria in Finite-Dimensional Economies with Incomplete Financial Markets,” *Annals of Economics and Finance*, 2(2), 265–296.
- CVITANIC, J., E. JOUINI, S. MALAMUD, AND C. NAPP (2011): “Financial Markets Equilibrium with Heterogeneous Agents,” *Review of Finance*, 16(1), 285–321.
- EPSTEIN, L., AND S. ZIN (1989): “Substitution Risk Aversion and the Temporal Behavior of Consumption and Asset Returns: A Theoretical Framework,” *Econometrica*, 57, 937–968.
- GUISSO, L., AND P. SODINI (2012): “Household Finance: An Emerging Field,” CEPR Discussion Papers.
- KEHOE, P. J., AND F. PERRI (2002): “International Business Cycles with Endogenous Incomplete Markets,” *Econometrica*, 70(3), 907–928.
- KRUSELL, P., AND A. SMITH (1998): “Income and Wealth Heterogeneity in the Macroeconomy,” *Journal of Political Economy*, 6, 867–896.
- LETTAU, M., AND S. LUDVIGSON (2010): “Measuring and Modelling Variation in the Risk-Return Trade-off,” in *Handbook of Financial Econometrics*, ed. by Y. Ait-Sahalia, and L. P. Hansen. Elsevier Science B.V., North Holland, Amsterdam.
- LONG, J. B. D., A. SHLEIFER, L. H. SUMMERS, AND R. J. WALDMAN (1990): “Noise Trader Risk in Financial Markets,” *Journal of Political Economy*, 98, 703–738.
- MARCET, A., AND R. MARIMON (1992): “Communication, commitment, and growth,” *Journal of Economic Theory*, 58(2), 219–249.

- (1999): “Recursive Contracts,” working paper Universitat Pompeu Fabra.
- MEHRA, R., AND E. PRESCOTT (1985): “The Equity Premium: A Puzzle,” *Journal of Monetary Economics*, 15(2), 145–161.
- MESSNER, M., N. PAVONI, AND C. SLEET (2012): “Recursive Methods for Incentive Problems,” *Review of Economic Dynamics*, 15(4), 501–525.
- ROSS, S., M. WESTERFIELD, J. WANG, AND L. KOGAN (2011): “Market Selection,” Working Papers, Social Science Research Network.
- SANDRONI, A. (2000): “Do Markets Favor Agents Able to Make Accurate Predictions?,” *Econometrica*, 68(6), 1303–1342.
- STORESLETTEN, K., C. TELMER, AND A. YARON (2007): “Asset Pricing with Idiosyncratic Risk and Overlapping Generations,” *Review of Economic Dynamics*, 10(4), 519–548.
- TSYRENNIKOV, V., T. SARGENT, AND T. COGLEY (2013): “Wealth Dynamics in a Bond Economy with Heterogeneous Beliefs,” *Economic Journal*, forthcoming.

A Appendix

A.1 Stationarizing the Economy

There are two issues with respect to stationarizing our economy. First, aggregate output is subject to growth rate shocks and hence is not stationary over time. This implies that the individual's consumption and wealth are also nonstationary, as are equity prices. To deal with this first issue, we express real quantities in terms of aggregate output. Second, the presence of net-wealth constraints implies that the individual's recursive multipliers are nonstationary. For this reason, normalize $h_t = 1$ each period. This implies that $\zeta_t^{-1/\alpha}$ is the individual's consumption share given this normalization.

For any agent with CRRA preferences, we can readily express his normalized payoff (given $Y_t = 1$) in terms of his consumption share. This allows us to construct a stationary analog to our economy. Assume that

$$u^i(c^i(z^t, \eta^t)) = \frac{c^i(z^t, \eta^t)^{1-\alpha_i}}{1-\alpha_i},$$

and let $\hat{c}^i(z^t, \eta^t) = c^i(z^t, \eta^t)/C(z^t)$ denote the individual's consumption share. Then

$$\begin{aligned} \sum_{t=1}^{\infty} (\beta_i)^t \sum_{(z^t, \eta^t)} u^i(c^i(z^t, \eta^t)) \tilde{\pi}^i(z^t, \eta^t) &= \beta_i \sum_{(z^1, \eta^1)} u^i(z_1 \hat{c}^i(z^1, \eta^1)) \tilde{\pi}^i(z^1, \eta^1) \\ &\quad + \sum_{t=2}^{\infty} (\beta_i)^t \sum_{(z^t, \eta^t)} u^i(c^i(z^t, \eta^t)) \tilde{\pi}^i(z^t, \eta^t), \\ &= \beta_i \sum_{(z^1, \eta^1)} u^i(z_1 \hat{c}^i(z^1, \eta^1)) \tilde{\pi}^i(z^1, \eta^1) \\ &\quad + \sum_{(z^2, \eta^2)} (\beta_i)^2 C(z^1)^{1-\alpha_i} u^i(z_2 \hat{c}^i(z^2, \eta^2)) \tilde{\pi}^i(z^2, \eta^2) \\ &\quad + \sum_{t=3}^{\infty} (\beta_i)^t \sum_{(z^t, \eta^t)} u^i(c^i(z^t, \eta^t)) \tilde{\pi}^i(z^t, \eta^t). \end{aligned}$$

Continuing in this fashion, we get that

$$\sum_{t=1}^{\infty} (\beta_i)^t \sum_{(z^t, \eta^t)} u^i(c^i(z^t, \eta^t)) \tilde{\pi}^i(z^t, \eta^t) = \sum_{t=1}^{\infty} \sum_{(z^t, \eta^t)} \beta_i (z^{t-1}) u^i(z_t \hat{c}^i(z^t, \eta^t)) \tilde{\pi}^i(z^t, \eta^t),$$

where

$$\beta_i (z^{t-1}) = (\beta_i)^t C(z^{t-1})^{1-\alpha_i},$$

and take $C(z^0) = 1$. Note that this normalization does depend upon the CRRA coefficient of the individual's preferences, but is independent of his probabilities or his preference shock. We can exploit this change in variables to express the individual's f.o.c. (8) as

$$(\beta_i)^t u'(z_t \hat{c}(z^t, \eta^t)) \tilde{\pi}^i(z^t, \eta^t) = \hat{\zeta}^i(z^t, \eta^t) P(z^t) \pi(z^t, \eta^t),$$

where $\hat{\zeta}^i(z^t, \eta^t) = \zeta^i(z^t, \eta^t) / [C(z^{t-1})^{1-\alpha_i}]$. The transformed version of our law of motion for the recursive multiplier, (7), is

$$\hat{\zeta}^i(z^t, \eta^t) = \hat{\zeta}^i(z^{t-1}, \eta^{t-1}) / (z_{t-1})^{1-\alpha_i} + \hat{\nu}^i(z^t, \eta^t) - \hat{\varphi}^i(z^t, \eta^t),$$

where $\hat{\nu}^i(z^t, \eta^t) = \nu^i(z^t, \eta^t) / [C(z^{t-1})^{1-\alpha_i}]$ and $\hat{\varphi}^i(z^t, \eta^t) = \varphi^i(z^t, \eta^t) / [C(z^{t-1})^{1-\alpha_i}]$. The transformed version of (10) is simply

$$\sum_{\eta^{t+1} \succ \eta^t} \hat{\nu}(z^{t+1}, \eta^{t+1}) R(z^{t+1}) \pi(z^{t+1}, \eta^{t+1}) P(z^{t+1}) = 0.$$

The individual's net saving function can also be made stationary and expressed in terms of the consumption share:

$$\hat{\mathcal{S}}^i(z^t, \eta^t) = \frac{\mathcal{S}^i(z^t, \eta^t)}{Y(z^t)} = \sum_{\tau \geq t} \sum_{(z^\tau, \eta^\tau) \succeq (z^t, \eta^t)} \tilde{P}(z^\tau, \eta^\tau) [\gamma \eta_\tau - \hat{c}^i(z^\tau, \eta^\tau)] \left[\prod_{j=t+1}^{\tau} z_j \right].$$

And, finally, the the analog of the mapping rule (11) is given by

$$\bar{\zeta}^i(z^t, \eta^t) : \left(\frac{\bar{\zeta}^i(z^t, \eta^t) P(z^t)}{\beta^t C(z^{t-1})^{1-\alpha}} \right)^{-1/\alpha} = u'^{-1} \left(\frac{\zeta^i(z^t, \eta^t) \pi(z^t, \eta^t) P(z^t)}{(\beta_i)^t C(z^{t-1})^{1-\alpha_i} \tilde{\pi}^i(z^t, \eta^t)} \right). \quad (16)$$