

NBER WORKING PAPER SERIES

SOMETHING IN THE WATER:
CONTAMINATED DRINKING WATER AND INFANT HEALTH

Janet Currie
Joshua S. Graff Zivin
Katherine Meckel
Matthew J. Neidell
Wolfram Schlenker

Working Paper 18876
<http://www.nber.org/papers/w18876>

NATIONAL BUREAU OF ECONOMIC RESEARCH
1050 Massachusetts Avenue
Cambridge, MA 02138
March 2013

Currie thanks the John D. and Catherine T. MacArthur Foundation and the Environmental Protection Agency (RE: 83479301-0) for supporting this research. Katherine Meckel thanks the National Science Foundation for dissertation support. The views expressed herein are those of the authors and do not necessarily reflect the views of the National Bureau of Economic Research.

At least one co-author has disclosed a financial relationship of potential relevance for this research. Further information is available online at <http://www.nber.org/papers/w18876.ack>

NBER working papers are circulated for discussion and comment purposes. They have not been peer-reviewed or been subject to the review by the NBER Board of Directors that accompanies official NBER publications.

© 2013 by Janet Currie, Joshua S. Graff Zivin, Katherine Meckel, Matthew J. Neidell, and Wolfram Schlenker. All rights reserved. Short sections of text, not to exceed two paragraphs, may be quoted without explicit permission provided that full credit, including © notice, is given to the source.

Something in the Water: Contaminated Drinking Water and Infant Health

Janet Currie, Joshua S. Graff Zivin, Katherine Meckel, Matthew J. Neidell, and Wolfram Schlenker
NBER Working Paper No. 18876

March 2013

JEL No. I12,Q51,Q53

ABSTRACT

This paper provides estimates of the effects of in utero exposure to contaminated drinking water on fetal health. We examine the universe of birth records and drinking water testing results for the state of New Jersey from 1997 to 2007. Our data enable us to compare outcomes across siblings who were potentially exposed to differing levels of harmful contaminants from drinking water while in utero. We find small effects of drinking water contamination on all children, but large and statistically significant effects on birth weight and gestation of infants born to less educated mothers. We also show that those mothers who were most affected by contaminants were the least likely to move between births in response to contamination.

Janet Currie
Princeton University
316 Wallace Hall
Princeton, NJ 08544
and NBER
jcurrie@princeton.edu

Joshua S. Graff Zivin
University of California, San Diego
9500 Gilman Drive, MC 0519
La Jolla, CA 92093-0519
and NBER
jgraffzivin@ucsd.edu

Katherine Meckel
Department of Economics
Columbia University
420 W 118th St
New York NY 10027
meckel@nber.org

Matthew J. Neidell
Department of Health Policy and Management
Columbia University
722 W 168th Street, 6th Floor
New York, NY 10032
and NBER
mn2191@columbia.edu

Wolfram Schlenker
Agricultural and Resource Economics
University of California at Berkeley
329 Giannini Hall
Berkeley, CA 94720
and NBER
schlenker@berkeley.edu

Health at birth is predictive of important child outcomes including educational attainment and adult earnings. Hence, economists are increasingly concerned with understanding the impacts of conditions during pregnancy on birth outcomes (Almond and Currie, 2010, 2011; Black et al. 2007; Case and Paxson, 2008; Currie, 2011). Exposure to environmental pollution during pregnancy is a common source of potential fetal health shocks. Recent research shows that, even at levels below current air quality standards, air pollution can harm fetal health as measured by the incidence of low birth weight and prematurity (Currie and Neidell, 2005; Currie, Neidell, and Schneider, 2009). Drinking water contamination is another, potentially important, source of in utero exposure to pollution. A recent series of articles in *The New York Times* (c.f. Duhigg, 2009) have highlighted lapses in drinking water quality throughout the U.S., suggesting that contamination of drinking water may be relatively common.

This paper provides estimates of the effects of in utero exposure to contaminated drinking water on fetal health. To do this, we examine the universe of birth records and drinking water testing results for the state of New Jersey from 1997 to 2007. Our data enable us to compare outcomes across siblings who were potentially exposed to differing levels of harmful contaminants from drinking water while in utero. We find small effects of drinking water contamination on all children, but large and statistically significant effects on birth weight and gestation of infants born to less educated mothers. We also show that those mothers who were most affected by contamination were the least likely to move between births in response to contamination.

Our paper highlights several methodological issues relevant to the study of a broad range of fetal and infant health effects. First, women who are exposed to pollutants differ in observable ways from those who are not, and may also differ in unobservable ways. These

differences must be accounted for, or they will bias the estimated effects of potential exposure. Second, mothers can take action to protect themselves and their children from harmful exposures, such as moving away from pollution sources. Our results are consistent with previous literature which suggests that the more educated are more likely to take these protective actions (Graff Zivin, Neidell, and Schlenker, 2011; Currie, 2011). Third, babies with longer gestation have a longer window in which they could have been exposed to a harmful contaminant. Since, other things being equal, babies with longer gestations have better outcomes, estimation methods that do not take account of the longer exposure window are biased against finding an effect. Since we follow mothers over time, we explicitly examine moving and use mother fixed effects in order to deal with omitted variables bias,¹ and use an instrumental variable constructed assuming gestation of nine months to deal with the mechanical correlation between gestation length and exposures.

The paper proceeds as follows. The next section provides a review of related literature; Section 3 discusses the data; Section 4 discusses the empirical framework; Section 5 presents the results; and Section 6 concludes.

2. Background Literature

b) The Impact of Air Pollution of Infant Health

Much of the growing literature about pollution and health has focused on the impact of air pollution on fetal health. The reason for examining fetal health is that, unlike adults, fetuses have a relatively short window in which they could be exposed to pollutants, so one can more

¹ Note that this strategy does not account for changes in water consumption patterns in response to water quality violations (Graff Zivin, Neidell, and Schlenker, 2011). This does not introduce a bias per se but changes the interpretation of estimates, so that our estimates reflect the effect of contamination net of avoidance behavior. See Graff Zivin and Neidell (2013) for more details.

confidently draw a connection between a contemporaneous pollution source and an adverse health outcome. In contrast, adults have been exposed to many pollutants over the course of a lifetime, and it may be difficult to connect current health problems with recent exposures. The reason for focusing on air pollution is that most developed countries have established systems of air quality monitoring stations, so that pollution data is readily available.

Cross-sectional differences in ambient air pollution have been shown to be correlated with other determinants of fetal health. In particular, fetuses exposed to higher levels of air pollution are more likely to be African-American or Hispanic and tend to have less educated mothers (Currie, 2011). Failing to account for these relationships leads to upwardly biased estimates of the effects of pollution. Epidemiological studies typically have few (if any) controls for these potential confounders.²

Chay and Greenstone (2003a, 2003b) address the problem of omitted variables by focusing on "natural experiments" provided by the implementation of the Clean Air Act of 1970 and the recession of the early 1980s. Both the Clean Air Act and the recession induced sharper reductions in air-borne particulates in some counties than in others, and they use this exogenous variation in levels of air pollution at the county-year level to identify its effects. They estimate that a one unit decline in particulates caused by the implementation of the Clean Air Act (or recession) led to between five and eight (four and seven) fewer infant deaths per 100,000 live births. They also find some evidence that the decline in Total Suspended Particles (TSPs) led to reductions in the incidence of low birth weight. However, only TSPs were measured at that time, so that they could not study the effects of other pollutants. And the levels of particulates studied

² There are some important exceptions. For example, Parker et al. (2008) study a natural experiment caused by the closure and reopening of a steel mill in a valley in Utah, and find that the closure reduced preterm birth.

by Chay and Greenstone (2003a, 2003b) are much higher than those prevalent today; for example, PM10 (particulate matter of 10 microns or less) levels have fallen by nearly 50 percent from 1980 to 2000.

Several recent studies consider natural experiments at more recently-encountered pollution levels. For example, Currie, Neidell, and Schmieder (2009) focus on a sample of mothers who lived near pollution monitors, and showed that babies exposed to higher levels of carbon monoxide (CO) *in utero* (which comes largely from vehicle exhaust) suffered reduced birth weight and gestation length relative to siblings, even though ambient CO levels were generally much lower than current Environmental Protection Agency (EPA) standards.³ The estimates suggest that moving from an area with high levels of CO to one with low levels of CO would have an effect larger than getting a woman who was smoking ten cigarettes a day during pregnancy to quit.⁴ Moreover, CO exposure increases the risk of death among newborns by 2.5 percent. The negative effects of CO exposure are five times greater for smokers than for non-smokers, and there is some evidence of negative effects of exposure to ozone and particulates among infants of smokers. Coneus and Spiess (2012) adopt similar methods using German data, and also find large effects of CO on infant health.

Currie and Walker (2011) exploit the introduction of electronic toll collection devices (E-ZPass) in New Jersey and Pennsylvania. Since much of the pollution produced by automobiles occurs when idling or accelerating back to highway speed, electronic toll collection greatly

³ This study builds on an earlier paper by Currie and Neidell (2005) that imputed pollution levels at the zip code level.

⁴ The standard for eight hour CO concentrations is nine parts per million (ppm). The mean in our sample is 1.6ppm, but some areas had levels around four. Moving from an area with 4ppm to one with 1ppm in the third trimester would reduce low birth weight by 2.5 percentage points, while going from ten to zero cigarettes per day would reduce the incidence of low birth weight by 1.8 percentage points.

reduces auto emissions in the vicinity of a toll plaza. They compare mothers near toll plazas to those who live near busy roadways but further from toll plazas and find that E-ZPass increases birth weight and gestation. They obtain similar estimates when they follow mothers over time and compare siblings born before and after adoption of E-ZPass. E-ZPass reduced CO by about 40 percent in the vicinity of toll plazas, and also reduced concentrations of many other pollutants found in vehicle exhaust. These reductions reduce the incidence of low birth weight by about one percentage point in the two kilometers surrounding the toll plaza, and by as much as 2.25 percentage points in areas immediately adjacent to the toll plaza.⁵

b) Evidence Regarding the Impact of Water Pollution

Congress passed the Safe Drinking Water Act (SDWA) in 1974 to safeguard public health by enabling the federal regulation of the national drinking water supply. This Act requires that the Environmental Protection Agency set health-based standards for common contaminants and oversee the enforcement of these standards. Amended in 1986 and 1996 to strengthen and extend the original rules, SDWA remains the major federal law concerning the nation's drinking water.

The SDWA applies to all of the more than 160,000 public water systems in the United States. These systems provide water to almost all Americans at some time in their lives.⁶ Water for public water systems is drawn from underground wells or surface water sources, including rivers and lakes, and passes through treatment facilities before reaching distribution systems.

⁵ In contrast to the results reported below, they did not find any impact of E-ZPass adoption on the demographic composition of births in the immediate vicinity of the toll plazas in the three years before and after adoption. It is possible that mothers did not realize the health benefits associated with adoption.

⁶ These regulations do not apply to private wells or bottled water. For more information, see: <http://water.epa.gov/lawsregs/guidance/sdwa/basicinformation.cfm>.

Under the guidelines set forth by the SDWA, testing for contamination is performed by a third party. Maximum Contaminant Limits (MCL) are set as the stricter of state and federal requirements and concentrations over these limits incur violations. Testing guidelines, including frequency, location, and follow up actions, are determined by contaminant type, the size of the population served and other parameters.⁷

Compared to air pollution, there has been relatively little investigation of the health effects of water pollution in rich countries such as the United States. Unlike air pollution, data on water pollution are more difficult to obtain and less conducive to estimating health effects. For example, although water quality is continuously monitored at all public water systems, the only reported data is when violations occur, and it is only accessible on a large scale basis by filing a Freedom of Information Act.

There are a number of threats to drinking water in the U.S., including improper disposal of chemicals, animal and human wastes, pesticides, and naturally occurring substances such as radon and arsenic that make understanding the impacts of water quality important for policy. While these substances are indeed routinely monitored, it appears that there are many violations of Safe Drinking Water Act standards. According to Duhigg (2009), 20% of U.S. water treatment systems had violated provisions of the act over the past five years. While many of these violations involved failure to report test water or to report test results accurately, there are also many water systems with illegal concentrations of chemicals such as arsenic and radioactive elements.

⁷ An explanation of the complex testing rules by contaminant type is beyond the scope of this article. For more information, see: www.nj.gov/dep/watersupply/dws_monitor.html.

This paper provides the first quasi-experimental examination of the effects of water pollution on infant health.

c) The Importance of Avoidance Behavior

Another issue that affects the measurement of the effects of pollution is avoidance behavior. People take actions ranging from changes in daily activities to moving house in order to reduce exposures to harmful pollutants. If people act to minimize their exposure, then the potentially harmful effects of pollution may be understated by estimation procedures that do not take these actions into account. A growing body of evidence suggests changes in daily actions effectively reduce exposure to pollution, whether from poor levels of air quality (Neidell, 2009) or mercury levels in fish (Shimshack et al., 2007).

Most relevant to this study, Graff Zivin, Neidell, and Schlenker (2011) find that drinking water violations reduce the consumption of bottled water using purchase data from a national grocery chain. They find that violations increase bottled water consumption by 17 to 22 percent, depending on the contaminant responsible for the violation. They also find that wealthier households are more likely to respond to chemical violations. While we are unable to control for this and other contemporaneous avoidance behaviors, we will exploit this heterogeneity to investigate whether the effects of contamination are higher in children from lower SES families.

With respect to mobility, Banzhaf and Walsh (2008), using California data from the decennial Census, find that high income families tend to move away from highly polluted areas. Currie (2011) and Currie and Walker (2011) use continuous Vital Statistics Natality data to look specifically at the responses of pregnant women to either changes in local pollution levels, or to changes in information about pollution levels. For example, Currie (2011) shows that following the announcement that a Superfund site has been cleaned up, the share of white, college-educated

mothers living in the area immediately surrounding the site increases while the share of African-American, high school dropout mothers declines. Conversely, when new information is released about hazardous emissions of heavy metals at an industrial plant, the area immediately surrounding the plant becomes less “white” and less college-educated. These analyses suggest that pregnant mothers can respond relatively rapidly to perceived changes in environmental threats, but that it is primarily white college-educated women who do so. Since we follow mothers over time, we can explore whether water quality affects their decision to move.

3. Data and Summary Statistics

Our analysis relies on four sources of data: New Jersey vital statistics natality records (birth certificates) for the years 1997 to 2007, records of drinking water violations for New Jersey from 1997 to 2007, temperature and precipitation statistics, and a map of drinking water service areas in New Jersey. As described in the next section, precise information on the mother’s location of residence from the birth certificates enables us to match these datasets together.

Our first data source is birth certificate data obtained from the Vital Statistics Division of the New Jersey Department of Health and Human Services. These data include a record for every birth and each record has information about the infant’s health at birth including birth weight and gestational age as well as maternal characteristics such as race, education, and marital status. We were able to obtain a confidential version of the data which included the longitude and latitude of the mother’s residence. Siblings were also matched to each other in the birth sample using mother’s full maiden name, race and birth date, father’s information, and social security numbers

where available.⁸

The second data source contains data on testing requirements, reporting requirements, and water quality from the New Jersey Department of Environmental Protection (NJ DEP), which collects records of violations of drinking water MCLs. In this study, we use data on violations of MCLs only. There are many other violations which have to do with reporting requirements. The violations data include the start and end date of the testing period during which the violation was recorded, the contaminant name, testing site, name of the water system, and characteristics of the water system, including the size of the population served.⁹ We omit these since it is unclear whether these violations pose a health threat.

We divided contaminants that posed a potential threat to human health into two categories. The first category, which we label “any chemical contaminant,” includes: 1,2-dichloroethane; antimony; arsenic; barium; benzene; beryllium; cadmium; carbon tetrachloride; dichloromethane; gross alpha, including radon and uranium; gross alpha, excluding radon and uranium; haloacetic acids (haa5); iron; lead and copper rule violations; manganese; mercury; nitrate; selenium; styrene; thm; tetrachloroethylene; thallium; trichloroethylene; combined radium (-226 & -228); and combined uranium. The second category, which we label “any

⁸ This matching was done on site in Trenton, and then all identifiers were stripped from the data. Given that we have a fixed time window, there are siblings we cannot find because the sibling was born either before the start of our window or after the end of our window. One way to assess the accuracy of our matching algorithm is to look for second and higher birth-order children where the “date of last live birth” is in our time window, and see if we can find these births. We would not expect to find all of them since some women will have moved from other states between births. For this group of children we are able to find 79% of previous births, giving us some confidence in our matching algorithm.

⁹ We also focus our sample on community water systems. Community water systems pipe water for human consumption to at least 15 service connections used year-round, or one that regularly serves at least 25 year-round residents. Other types of water systems include transient non-community and non-transient, non-community. These other types of water systems supply water to people for short periods of time and include gas station, campgrounds, schools, office buildings, and hospitals.

contaminant,” is broader and includes bacterial contaminants due to coliform from fecal matter and other sources in addition to all contamination in our first “any chemical contaminant” category.

The third data source is a digitized map of the community water service areas from the New Jersey Department of Environmental Protection (DEP) (Carter et al., 2004).¹⁰ This map was originally created to enable long-term water supply planning, and to aid in emergency management during drought. The map, reproduced as Figure 1, contains the coordinates of the boundaries of all community service areas, which change little over time.

Our subsample of all community water districts for 1997-2007 which have non-missing geographic information includes 488 systems. The smallest serves 22 people (Triple Brook Mobile Home Park), while the largest serves 773,163 (Hackensack Water Company, which serves several towns in Northeastern NJ). The mean number of people served per water district is 19,011, while the median is 4,012.

Of this sample, 135 water districts have MCL violations during our time period. The smallest district with a violation serves 40 people, while the largest serves 314,900. The mean number served in the subsample with violations is 30,062.

The final source of data is daily temperature statistics for each 2.5 by 2.5 mile square in the state of New Jersey. Construction of this data follows Schlenker and Roberts (2006). Using this data, we construct, for each square: the average and absolute maximum and minimum daily temperature; the percentage of days with temperature below 0 C and above 29.4 C; and the percentage of days with precipitation and average daily precipitation. This data will help us

¹⁰ This map was developed using New Jersey Department of Environmental Protection Geographic Information System digital data, but this secondary product has not been verified by NJDEP and is not state-authorized.

control for fluctuations in weather that might affect exposure as well as infant health; for example, when it is hotter, people may drink more tap water, but heat is also related to birth weight (Deschenes et al, 2009).

As discussed above, the birth data include the longitude and latitude of the mother's residence. Combining this data with the NJ DEP drinking water map using ArcGIS software,¹¹ we are able to match births to the water systems that serve their residences. Births that do not match to our map are dropped from our sample as these residences utilize private wells and we have no information about their water quality.

We then merge the violation history of each water system into our matched data. We create two types of indicators. The first pair measures whether there were chemical or any violations that occurred during the child's actual gestation period, and the second measures whether there were chemical or any violations during the 39 weeks following each infant's conception. The exposure variables based on a fixed gestation length of 39 weeks will be used as instrumental variables for the actual exposure measures in order to correct for the mechanical correlation between gestation length and the probability of exposure described above.

We match the weather data to each birth by the location of the mother's residence. To do this, we calculate the centroid of each 2.5 by 2.5 mile square and assign each mother to her closest centroid. Then, we calculate averages of the daily weather statistics in the given centroid over each mother's gestational period.

Of the original sample of 1,283,598, 1,044,355 could be matched to a water district. Those outside water districts rely on wells, which are not systematically tested. Deleting "one

¹¹ ESRI 2011. ArcGIS Desktop: Release 10. Redlands, CA: Environmental Systems Research Institute.

child” families resulted in 529,565 observations. Finally, we deleted observations with missing data on birth weight and gestation, as well as their siblings which left 521,978 observations.

Table 1 provides summary statistics for the control variables used in our analysis. The first row shows that 8% of infants were potentially exposed to drinking water contamination due to violations of MCLs in utero. Of these, 84% were exposed to chemical violations. The most common chemical violations are from combined radium, TTHM, and gross alpha, each of which make up roughly 20% of the chemical violations. The most common sources of chemical exposure during the in-utero period are TTHM, haloacetic acids, and coliform, affecting 2.95%, 1.46%, and 1.43% of births, respectively.

Table 1 also shows the same statistics for those potentially exposed to violations. Infants exposed to any contamination are more likely to be low birth weight (birth weight less than 2,500 grams) and/or preterm (gestation less than 37 weeks) than the average infant, and that infants exposed to chemical contamination of drinking water in utero are particularly likely to have one of these negative outcomes. However, the rest of the table suggests that these relationships may not be causal: Infants exposed to contamination *in utero* tend to have mothers who are younger, less educated, and less likely to be married than other mothers. They are also much more likely to be African-American or Hispanic than the average mother in New Jersey. All of these factors except Hispanic ethnicity are independently associated with poorer birth outcomes. It will be important to control for these and other potential differences in our estimation.

4. Empirical Methods

Table 1 shows that there are observable differences between pregnant women who live in water districts with violations, and those who do not. We will estimate models with mother fixed effects in order to control for all factors, observed and unobserved, that are constant between mothers. These models take the form:

$$\text{Outcome}_{iwmt} = \beta_0 + \beta_1 * \text{CNTM}_{iwmt} + \theta' X_{iwmt} + \eta' \text{TEMP}_{iwmt} + \alpha_m + \gamma_t + \varepsilon_{iwmt} \quad (1)$$

for each infant i , born in year-month t , in water system w , to mother m . The outcomes we consider include low birth weight and prematurity. CNTM_{iwmt} is an indicator of contamination—either “any chemical contamination” or “any contamination.” X_{iwmt} is the following vector of indicators: mother's age: 19-24, 25-34, 35+, missing; mother's race: non-Hispanic White, non-Hispanic black, Hispanic, missing race; mother's education: less than high school, some college, college or more, education missing; risk factors for the pregnancy; maternal smoking; parity indicators; mother is married, marital information is missing; child is male, sex of child is missing. TEMP_{iwmt} is a vector of weather controls including: maximum daily temp; minimum daily temp; percent of days in which the daily maximum is above 29.4 C; percent of days in which daily minimum is below 0 C; average daily precipitation; percent of days in which precipitation is over 0.) The α_m are a vector of mother fixed effects, while the γ_t are a vector of year*month of birth effects. The key coefficient is β_1 , which measures the effects of exposure to drinking water contamination on the outcome of interest.

While mother fixed effects control for all fixed characteristics of mothers, location is not necessarily a constant, because women may move in response to contamination in their water districts. If contaminants exceed maximum contaminant level (MCL) standards, the purveyor of

the local drinking water system must notify the NJ DEP of the violation and notify customers within 24-hours if the contaminant poses an immediate health threat (which primarily involves microorganisms and nitrates) and within 30 days for other health threats.

If a mother moves because of contamination, revealed preference arguments suggest that she preferred her first location to the available options in the absence of contamination. Suppose a mother experiences drinking water contamination in pregnancy 1, and moves to a new location where she does not experience contamination. In this situation, the estimated effect of experiencing contamination during pregnancy 1 will be biased towards zero because the outcome of pregnancy 1 will be compared to the outcome of pregnancy 2, in which the woman did not experience a contamination but was residing in a suboptimal location.

In order to gauge the extent to which our estimates may be biased by endogenous maternal mobility, we estimate a series of models of the probability that a woman who was exposed to contamination during one pregnancy has moved by the time she has a subsequent pregnancy.¹² These models take the following form:

$$\text{Moved}_{2wmt} = \beta_0 + \beta_1 * \text{CNTM}_{1wmt} + \theta' \text{X}_{1wmt} + \eta' \text{TEMP}_{1wmt} + \gamma_t + \varepsilon_{iwmt} \quad (2)$$

where Moved refers to whether the mother had moved to a different water system by the time of the second birth. The other variables are defined in the same way as above, but are measured as of the time of the first birth. Given prior literature suggesting differential responses by mothers with different characteristics, we also estimate models that include interactions of the variable

¹² Note that the first birth observed in the data may not be the mother's first born child. This is why it is still necessary to control for parity.

CNTM with maternal characteristics including education, race, ethnicity, age, and whether there are risk factors for the pregnancy.

Finally, to account for the potential endogeneity of gestation, we estimate models instrumenting CNTM using a “full term gestation” instrument that measures whether the fetus would have been exposed to contamination had the pregnancy lasted the full term.

5. Results

Table 2 shows estimates of our models of maternal mobility. The first panel shows estimates using the “any chemical” measure, while the second panel shows estimates using the “any contaminants” measure. The first column suggests that there is only weak evidence overall that mothers who are exposed to contaminated drinking water during the first pregnancy are likely to have moved by the time of the next birth. The coefficient on “any chemicals” is not statistically significant, while the coefficient on “any contaminant” is significant at the 90% level of confidence.

However, the remaining columns of Table 2 suggest that this overall result may mask heterogeneity in the responses across mothers. When we allow the response to vary with maternal characteristics, the results suggest that mothers who are less educated are less likely than other mothers to move in response to contamination, while older mothers are more likely to move. There is also suggestive evidence that black and Hispanic mothers are less likely to move though these interactions are not statistically significant. These estimates suggest that we should expect to see larger estimated health effects for minority and less educated women because these women are less likely to take measures to avoid pollution, including moving.

Table 3 shows our main results for the estimated effects of exposure to contaminated drinking water on low birth weight and prematurity. The table is arranged to show the effects of changes in specification on our estimates. Column (1) shows that in an Ordinary Least Squares regression without mother fixed effects, and without any correction for the mechanical correlation between gestation length and exposure, exposure to contaminated drinking water appears to have little effect on birth outcomes. Column (2) shows, however, that when we instrument actual contamination using the contamination that would have been experienced had gestation lasted exactly 39 weeks, the estimated effect rises by an order of magnitude, though it is still imprecisely estimated. The first stage regressions corresponding to Table 3 are shown in Appendix Table 1. Column (3) demonstrates that controlling for omitted characteristics of the mother by including mother fixed effects increases the size of the estimated effect.

Finally, column (4) shows the estimated effect when we make both these corrections. There is now a statistically significant effect of contamination on the incidence of low birth weight. Both the first and the second panel suggest that the incidence of low birth weight rises by 0.0032 for exposure to any contaminant and 0.0034 for exposure to a chemical contaminant, an increase of 6% relative to the mean incidence of low birth weight in the full sample.

Columns (5) through (8) show the results of estimating the same types of models for prematurity. Column (5) shows that the naïve OLS estimate is actually negative, suggesting that exposure to contaminated drinking water reduces prematurity. Columns (6) and (7) demonstrate that either using the instrumental variables strategy or including mother fixed effects reduces the estimate to statistical insignificance. Finally, column (8) shows that when we adopt both of these corrections, the estimated effect is positive, though still imprecisely estimated.

As discussed above, it is likely that we will find larger effects in subsets of the population

who are less likely to take measures to avoid contaminated drinking water. This hypothesis is tested in Table 4, which shows interactions of the contamination variable with the same maternal characteristics explored in Table 2, using the IV-FE model.¹³ The main effect of contamination is generally positive, suggesting that contaminated drinking water increases low birth weight as in Table 3. The interaction terms are only statistically significant for mothers with high school or less (though they are also large in magnitude for black mothers), indicating that it is the less educated who are most likely to suffer negative health effects. The point estimate of 0.0098 on any chemical contamination represents a large percentage increase over the baseline incidence of low birth weight in the less educated mothers in our sample: 14.55% on a baseline of .0673. This point estimate is slightly greater than that on “any contamination” suggesting that chemicals in the water have more harmful effects than exposure to fecal coliform.

Table 5 shows the same exercise for prematurity. The main effects do not suggest any overall effect. The interactions again indicate strong negative effects on less educated mothers, and in this specification we also see effects for black mothers.

6. Conclusions

Mounting evidence links harms suffered *in utero* to outcomes later in life. Economists have begun to see the fetal period as one that shapes the trajectory of one’s schooling, earnings, and health. Special attention should therefore be paid to harmful substances to which pregnant women might be exposed. While a good deal of recent research focuses on the effects of air pollution on fetal health, there has been little attention to the potential harm caused by contaminated drinking water.

¹³ Larger effects may also exist for these subsets of the population because of poorer maternal health that is more susceptible to the effects of contamination.

This paper provides a first quasi-experimental investigation of the effects of contaminated drinking water on fetal health, and highlights several methodological issues that bedevil the measurement of these effects. First, we show that the women who live in areas with contaminated water supplies differ from other women in ways that one would expect to be correlated with worse fetal health. It is therefore important to control for these differences. Second, women may respond to contaminated water by moving elsewhere. We show that more educated women are more likely to vote with the feet. Third, there is a mechanical positive correlation between length of gestation and the probability of being exposed to most fetal health insults. We show that correcting for this bias can have an important impact on the estimated magnitude of the effect. Fourth, there is good reason to expect effects to differ by socioeconomic status. Just as they are more likely to move, more educated women are more likely to take measures to protect themselves and their children from contaminated water.

We find that living in a water district with contaminated water during pregnancy is associated with an increase in low birth weight of 14.55% among less educated mothers. Similarly, potential exposure to contaminated water increases the incidence of prematurity by 10.3% among less educated mothers. Since not every mother in an affected water district is likely to be exposed to contaminated water, these estimates suggest large negative effects among those women who are actually exposed to water contaminated by chemicals during pregnancy.

References

Almond D and Currie J. 2011a. "Human Capital Development Before Age Five," in Orley Ashenfleter and David Card (Eds.), *The Handbook of Labor Economics*, 4b. Amsterdam: Elsevier Science B.V.

Almond D and Currie J. 2011b. "Killing Me Softly: The Fetal Origins Hypothesis." *Journal of Economic Perspectives*, Vol. 25(3): 153-172.

Banzhaf, S. and R Walsh (2008) "Do People Vote with Their Feet? An Empirical Test of Tiebout," *American Economic Review*, American Economic Association 98(3): 843-63

Black SE, Devereux PJ, and Salvanes KG. "From the Cradle to the Labor Market? The Effect of Birth Weight on Adult Outcomes." *Quarterly Journal of Economics* 2007; 122(1); 409-439.

Carter, Weg, August, Bradley, Yucel and Todd. 2004. "1998 New Jersey Public Community Water Purveyor Service Areas." NJDEP Division of Science, Research and Technology & Pennoni Associates, Inc. Trenton, NJ.

Case A and Paxson C. "Stature and Status: Height, Ability, and Labor Market Outcomes." *Journal of Political Economy* 2008; 116(3); 499-532.

Coneus K, Spiess CK. "Pollution exposure and child health: evidence for infants and toddlers in Germany." *Journal of Health Economics* 2012 Jan;31(1):180-96.

Currie J. "Inequality at Birth: Some Causes and Consequences." *American Economic Review* 2011; 101(3):1-22.

Currie, J and Neidell M. "Air Pollution and Infant Health: What Can We Learn From California's Recent Experience?" *Quarterly Journal of Economics* 2005; 120(3): 1003-1030.

Currie J, Neidell M, and Schneider JF. "Air Pollution and Infant Health: Lessons from New Jersey." *Journal of Health Economics* 2009; 28(3); 688-703.

Olivier Deschenes, Michael Greenstone and Jonathan Guryan. "The Economic Impacts of Climate Change: Evidence from Agricultural Output and Random Fluctuations in Weather." *American Economic Review Papers and Proceedings*, May 2009, 99(2): 211-17.

Duhigg, Charles. "Millions in U.S. Drink Contaminated Water," *The New York Times*, Dec. 7, 2009. http://www.nytimes.com/2009/12/08/business/energy-environment/08water.html?pagewanted=all&_r=0

Graff Zivin, Joshua and Matthew Neidell (2013). "Environment, Health, and Human Capital." Mimeo, Columbia University.

Graff Zivin, Joshua, Matthew Neidell and Wolfram Schlenker (2011). "Water Quality Violations and Avoidance Behavior: Evidence from Bottled Water Consumption." *American Economic Review: Papers and Proceedings*, 101(3).

Neidell, M. Air Pollution, Health, and Socio-Economic Status: The Effect of Outdoor Air Quality on Asthma Exacerbation in Children, *Journal of Health Economics*, 23(6), 2004.

Graff Zivin, Joshua and Matthew Neidell (2009). "Days of Haze: Environmental Information Disclosure and Intertemporal Avoidance Behavior." *Journal of Environmental Economics and Management*, 58(2).

Schlenker W, Roberts MJ (2006) Nonlinear Effects of Weather on Corn Yields. *Rev Agr Econ* 28:391-398.

Shimshack, Jay Michael Ward, and Tim Beatty. 2007. Mercury Advisories: Information, Education, and Fish Consumption. *Journal of Environmental Economics and Management* 53(2): 158-79.

Figure 1: New Jersey Water Districts

(State Boundary Shown for Reference Only)

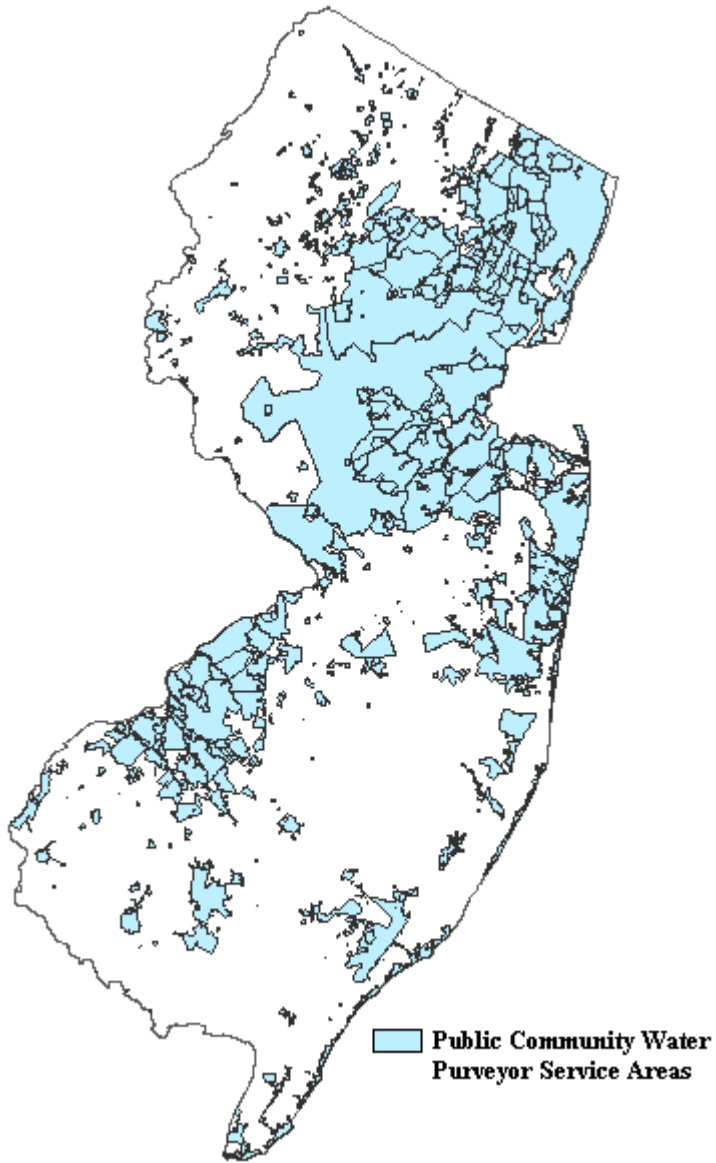


Table 1: Sample Means for All Mothers and Those Potentially Exposed

	All	Any Contam.	Any Chem.
# of Observations	521978	42256	35557
Low Birthweight	0.0521 (0.0003)	0.0578 (0.0011)	0.0613 (0.0013)
Preterm (<37 wks)	0.0739 (0.0004)	0.0776 (0.0013)	0.0811 (0.0014)
<i>Mom's Age:</i>			
<19	0.0336 (0.0002)	0.0461 (0.0010)	0.0519 (0.0012)
19-24	0.2029 (0.0006)	0.2753 (0.0022)	0.3017 (0.0024)
25-34	0.5699 (0.0007)	0.5256 (0.0024)	0.5091 (0.0027)
35+	0.1935 (0.0005)	0.1530 (0.0018)	0.1372 (0.0018)
<i>Mom's Race:</i>			
African-American	0.1691 (0.0005)	0.2235 (0.0020)	0.2474 (0.0023)
Hispanic	0.2317 (0.0006)	0.3310 (0.0023)	0.3589 (0.0025)
Non-Hisp White	0.5166 (0.0007)	0.4011 (0.0024)	0.3566 (0.0025)
<i>Mom's Education:</i>			
No HS Diploma	0.1521 (0.0005)	0.2407 (0.0021)	0.2685 (0.0024)
HS	0.2780 (0.0006)	0.2405 (0.0023)	0.3302 (0.0025)
Some College	0.4228 (0.0007)	0.3498 (0.0023)	0.3237 (0.0025)
College or Adv.	0.1308 (0.0005)	0.0806 (0.0013)	0.0657 (0.0013)
Mother Smokes	0.0774 (0.0004)	0.0917 (0.0014)	0.0952 (0.0016)
Mother is Married	0.6950 (0.0006)	0.5728 (0.0024)	0.5311 (0.0026)

Note: Standard errors in parentheses.

Table 2: Effects of Contamination During First Birth on the Probability of Moving Before Second Birth

<i>Interaction:</i>	High School						
	None	or Less	Black	Hispanic	Over 35	Teen Mom	Smoking
A: Any Chem.	0.0098 (0.0076)	0.0248+ (0.0137)	0.0133 (0.0103)	0.0176 (0.0108)	0.0049 (0.0076)	0.0120 (0.0083)	0.0094 (0.0077)
* Mom has CHAR		-0.0266+ (0.0142)	-0.0176 (0.0225)	-0.0211 (0.0154)	0.0474** (0.0152)	-0.0244 (0.0182)	0.0048 (0.0188)
B: Any Contam.	0.0123+ (0.0066)	0.0265** (0.0108)	0.0155+ (0.0086)	0.0178** (0.0089)	0.0088 (0.0066)	0.0139** (0.0069)	0.0120+ (0.0066)
* Mom has CHAR		-0.0276** (0.0123)	-0.0174 (0.0206)	-0.0167 (0.0147)	0.0307** (0.0146)	-0.0198 (0.0177)	0.0042 (0.0167)
# Observations	189705	189705	189705	189705	189705	189705	189705

Notes: The sample consists of women who had two births in New Jersey between 1997-2007.

The dependent variable is an indicator equal to 1 if the mother moved between the first and second births in the sample. The key independent variable is contamination during the first pregnancy. Exposure to contaminants during pregnancy is instrumented with potential exposure during the 39 weeks following conception. All regressions include year*month fixed effects and the following indicators measured at first birth: Mother's age (19-24, 25-34, 35+, missing); mother's race: (non-Hispanic White, non-Hispanic Black, Hispanic, missing); mother's education (<12, 12, some college, college+, n mother smoked; risk factors for the pregnancy parity; mother married, married missing, child male, weather controls.

Robust standard errors are clustered on the water system.

+ p<0.10 ** p<0.05 *** p<0.001

Table 3: Effects of Drinking Water Contamination on Low Birth Weight and Prematurity

	(1)	(2)	(3)	(4)	(5)	(6)	(7)	(8)
	LBW	LBW	LBW	LBW	Premature	Premature	Premature	Premature
Any Chem.	-0.0001 (0.0012)	0.0016 (0.0012)	0.0018 (0.0017)	0.0034** (0.0017)	-0.0042*** (0.0014)	-0.0008 (0.0014)	-0.0015 (0.0019)	0.0021 (0.0019)
Any Contam.	-0.0006 (0.0011)	0.0012 (0.0011)	0.0016 (0.0015)	0.0032** (0.0015)	-0.0041*** (0.0013)	-0.0004 (0.0013)	-0.0015 (0.0017)	0.0024 (0.0017)
# Observations	521978	521978	521978	521978	521978	521978	521978	521978
Full-Gestation IV		x		x		x		x
Mom FE			x	x			x	x
Year*Month FE	x	x	x	x	x	x	x	x
Cluster SE on Mom			x	x			x	x

Notes: The sample consists of births matched to at least one sibling. Exposure to contaminants during pregnancy is instrumented with potential exposure during the 39 weeks following conception. All regressions include year*month fixed effects and the following indicators: Mother's age (19-24, 25-34, 35+, missing); mother's race: (non-Hispanic White, non-Hispanic Black, Hispanic, missing); mother's education (<12, 12, some college, college+, missing); mother smoked; risk factors for the pregnancy parity; mother married, married missing, child male, weather controls.

+ p<0.10 ** p<0.05 *** p<0.001

Table 4: Effects on Low Birth Weight for Mothers with Different Characteristics

(Models with Mother Fixed Effects and 39 Weeks IV)

<i>Mom Char.:</i>	HS or Less	Black	Hispanic	Over 35	Teen Mom	Smoking
Any Chem.	-0.0010 (0.0021)	0.0018 (0.0018)	0.0033+ (0.0020)	0.0034+ (0.0018)	0.0035** (0.0017)	0.0032+ (0.0017)
* Mom Char	0.0098** (0.0034)	0.0075 (0.0048)	0.0003 (0.0037)	0.0009 (0.0075)	-0.0101 (0.0197)	0.0067 (0.0124)
Any Contam.	-0.0003 (0.0019)	0.0021 (0.0016)	0.0033+ (0.0018)	0.0031** (0.0016)	0.0033** (0.0015)	0.0029+ (0.0015)
* Mom Char	0.0085** (0.0031)	0.0057 (0.0046)	-0.0001 (0.0035)	0.0018 (0.0062)	-0.0043 (0.0194)	0.0105 (0.0110)
# Observations	521978	521978	521978	521978	521978	521978

See Table 3 notes. Mother characteristics are measured as of the first birth. Robust standard errors are clustered on the mother.

Table 5: Effects on Prematurity for Mothers with Different Characteristics

(Models with Mother Fixed Effects and 39 Weeks IV)

<i>Mom Char.</i>	HS or Less	Black	Hispanic	Over 35	Teen Mom	Smoking
Any Chem.	-0.0020 (0.0024)	-0.0003 (0.0020)	0.0023 (0.0022)	0.0024 (0.0020)	0.0021 (0.0019)	0.0014 (0.0019)
* Mom Char	0.0090** (0.0038)	0.0111** (0.0052)	-0.0005 (0.0042)	-0.0044 (0.0089)	-0.0029 (0.0246)	0.0192 (0.0122)
R-squared	0.0000	-0.0000	-0.0000	-0.0000	-0.0000	-0.0000
Any Contam.	-0.0005 (0.0022)	0.0005 (0.0018)	0.0028 (0.0020)	0.0027 (0.0018)	0.0024 (0.0017)	0.0018 (0.0017)
* Mom Char	0.0068+ (0.0035)	0.0097+ (0.0049)	-0.0015 (0.0039)	-0.0056 (0.0075)	-0.0084 (0.0239)	0.0166 (0.0109)
R-squared	-0.0000	-0.0000	-0.0000	-0.0000	-0.0000	-0.0000
# Observations	521978	521978	521978	521978	521978	521978

See Table 3 notes. Mother characteristics are measured as of the first birth. Robust standard errors are clustered on the mother.

Table 5: Effects on Prematurity for Mothers with Different Characteristics

(Models with Mother Fixed Effects and 39 Weeks IV)

<i>Mom Char.</i>	HS or Less	Black	Hispanic	Over 35	Teen Mom	Smoking
Any Chem.	-0.0020 (0.0024)	-0.0003 (0.0020)	0.0023 (0.0022)	0.0024 (0.0020)	0.0021 (0.0019)	0.0014 (0.0019)
* Mom Char	0.0090** (0.0038)	0.0111** (0.0052)	-0.0005 (0.0042)	-0.0044 (0.0089)	-0.0029 (0.0246)	0.0192 (0.0122)
R-squared	0.0000	-0.0000	-0.0000	-0.0000	-0.0000	-0.0000
Any Contam.	-0.0005 (0.0022)	0.0005 (0.0018)	0.0028 (0.0020)	0.0027 (0.0018)	0.0024 (0.0017)	0.0018 (0.0017)
* Mom Char	0.0068+ (0.0035)	0.0097+ (0.0049)	-0.0015 (0.0039)	-0.0056 (0.0075)	-0.0084 (0.0239)	0.0166 (0.0109)
R-squared	-0.0000	-0.0000	-0.0000	-0.0000	-0.0000	-0.0000
# Observations	521978	521978	521978	521978	521978	521978

See Table 3 notes. Mother characteristics are measured as of the first birth. Robust standard errors are clustered on the mother.

Appendix Table 1: First Stage Regressions Corresponding to Table 3

	(2)	(4)	(6)	(8)
2nd Stage Outcome:	LBW	LBW	Premature	Premature
1st Stage Outcome:				
Chem In 39 Wks.	0.9960*** (0.0001)	0.9960*** (0.0004)	0.9960*** (0.0001)	0.9960*** (0.0004)
1st Stage Outcome:				
Contam. In 39 Wks.	0.9956*** 0.000105	0.9955*** (0.0004)	0.9956*** 0.000105	0.9955*** (0.0004)
# Observations	521978	521978	521978	521978
Full-Gestation IV	x	x	x	x
Mom FE		x		x
Year*Month FE	x	x	x	x
Cluster SE on Mom		x		x

Notes: Column numbers refer to the analagous column numbers in Table 3.