

NBER WORKING PAPER SERIES

INDIVIDUAL PRICE ADJUSTMENT ALONG THE EXTENSIVE MARGIN

Etienne Gagnon
David López-Salido
Nicolas Vincent

Working Paper 18213
<http://www.nber.org/papers/w18213>

NATIONAL BUREAU OF ECONOMIC RESEARCH
1050 Massachusetts Avenue
Cambridge, MA 02138
July 2012

This research was conducted with restricted access to Bureau of Labor Statistics (BLS) data. The views in this paper are solely the responsibility of the authors and should not be interpreted as reflecting the views of the Board of Governors of the Federal Reserve System, any other person associated with the Federal Reserve System, or the BLS. We thank Ben Malin and Randal Verbrugge for their support with BLS micro data, as well as Mike Woodford, Jeff Campbell, Gita Gopinath, Anil Kashyap, and Ed Nelson for their insightful comments. Christine Garnier and Andrew Giffin provided superb research assistance. Nicolas Vincent acknowledges financial support from the Fonds québécois de la recherche sur la société et la culture. We are grateful to the SymphonyIRI Group for the scanner data. As a condition of use, SymphonyIRI reviews all papers using their data to check that the data are not described in a misleading fashion. However, all analyses in this paper based on SymphonyIRI Group, Inc. data reflect the work and conclusions of the authors, not SymphonyIRI Group, Inc.

NBER working papers are circulated for discussion and comment purposes. They have not been peer-reviewed or been subject to the review by the NBER Board of Directors that accompanies official NBER publications.

© 2012 by Etienne Gagnon, David López-Salido, and Nicolas Vincent. All rights reserved. Short sections of text, not to exceed two paragraphs, may be quoted without explicit permission provided that full credit, including © notice, is given to the source.

Individual Price Adjustment along the Extensive Margin
Etienne Gagnon, David López-Salido, and Nicolas Vincent
NBER Working Paper No. 18213
July 2012
JEL No. E31,E32

ABSTRACT

Firms employ a rich variety of pricing strategies whose implications for aggregate price dynamics often diverge. This situation poses a challenge for macroeconomists interested in bridging micro and macro price stickiness. In responding to this challenge, we note that differences in macro price stickiness across pricing mechanisms can often be traced back to price changes that are either triggered or cancelled by shocks. We exploit observed micro price behavior to quantify the importance of this margin of adjustment for the response of inflation to shocks. Across a range of empirical exercises, we find strong evidence that changes in the timing of price adjustments contribute significantly to the flexibility of the aggregate price level.

Etienne Gagnon
Federal Reserve Board
20th and C Streets, N.W.
Washington, DC 20551
etienne.gagnon@frb.gov

Nicolas Vincent
HEC Montreal
Montreal, Quebec
Canada
nicolas.vincent@hec.ca

David López-Salido
Federal Reserve Board
20th and C Streets, N.W.
Washington, DC 20551
david.lopez-salido@frb.gov

1 Introduction

Over the past decade, economists have devoted substantial efforts to documenting basic facts about consumer micro price behavior, an endeavor made possible by the increased availability of large datasets.¹ A salient finding is that firms employ a rich variety of pricing strategies. In some sectors, such as energy, air travel, or fresh produce, firms adjust prices frequently, whereas in others, such as newspapers, health services, or maintenance activities, firms adjust prices infrequently. Even at the level of universal product codes (UPC), researchers have found variation across firms in the magnitude and frequency of price adjustments. And while sales and promotions are a defining feature of the way items are marketed to consumers in retail trade, temporary price discounts are uncommon in several other sectors.

Many macroeconomists had hoped that the new micro evidence would shorten the list of pricing mechanisms used in macroeconomic applications by revealing which mechanisms have empirical support and which ones do not. The variety of new micro facts has instead stimulated researchers to introduce several new mechanisms and to refine existing ones.² In retrospect, this outcome was probably unavoidable. As has long been recognized in the field of industrial organization (e.g., Carlton [1989]), product markets differ along several dimensions that influence pricing strategies. These dimensions include the number of buyers and sellers, the degree of product homogeneity, the durability of items, the presence of long-term relationships between buyers and sellers, the role of advertisement and information, the firm's price discrimination motives, and the ability to hold inventories. This heterogeneity would be immaterial to macroeconomists if all pricing mechanisms implied similar effects of aggregate shocks on inflation and output. Unfortunately, the choice of a particular mechanism is often consequential in macroeconomic applications. For instance, models matching the same average frequency and size of price changes can vary greatly in the speed of aggregate shock pass-through (see Golosov and Lucas [2007] for an illustration). The variety of facts and pricing mechanisms thus underscores the importance of identifying key features of micro price behavior that are important for aggregate adjustment and that macro models

¹Initial empirical work using sectoral data by Carlton (1986), Cecchetti (1986), Lach and Tsiddon (1992), and Kashyap (1995) has been followed by the work on consumer prices of Bils and Klenow (2004), Baharad and Eden (2004) for Israel, and several euro-area national studies summarized in Dhyne *et al.* (2005). For recent literature surveys, see Mackowiak and Smets (2008) and Klenow and Malin (2011).

²The list of pricing strategies and relevant frictions includes menu-cost models (e.g., Barro [1972] and Sheshinski and Weiss [1977]), the Calvo (1983) model, fixed-duration contracts (Taylor [1980]), infrequent information (e.g., Mankiw and Reis [2002]), rational inattention (e.g., Sims [2003]), uncertain and sequential trade (e.g., Eden [1994]), fair pricing (Rotemberg [2011]), price points (e.g., Levy *et al.* [2011]), search models (e.g., Head *et al.* [forthcoming]), price plans (Burstein [2006] and Alvarez, Lippi, and Paciello [2011]), reference prices (Eichenbaum, Jaimovich, and Rebelo [2011]), and price discrimination (e.g., Varian [1980]).

should aim to reproduce.

In this paper, we seek to connect micro and macro price stickiness by distinguishing between price adjustments that are *determined ahead* of shocks and those that are either *triggered or cancelled* by shocks. This distinction offers a natural way of contrasting popular time-dependent models, for which the timing of all price changes is predetermined, and state-dependent models, for which the timing of price changes can respond to shocks. In practice, asserting whether a price adjustment is predetermined or not, or should have occurred when it did not, is a challenging task. However, we argue that one can go a long way in deriving the aggregate implications of micro price stickiness by focusing on the *initial* response to aggregate shocks and by studying the determinants of individual price adjustments. The key finding of our empirical implementation is that some shocks alter the timing of individual price changes in ways that contribute significantly to the flexibility of the aggregate price level. One immediate implication is that pricing models abstracting from variation in the timing of price changes are missing an important channel of macroeconomic adjustment.

We formalize the distinction between predetermined price adjustments and those triggered or cancelled by shocks using the generalized *Ss* model developed by Caballero and Engel (1993a, 1993b, and 1999). The model is consistent with lumpy and infrequent price adjustments, a key empirical feature that we seek to reproduce, and has the added benefit of encompassing several pricing mechanisms commonly used in macroeconomic applications. Following Caballero and Engel (2007, henceforth “CE”), we then decompose the initial inflation response to an aggregate shock as the sum of an intensive margin and an extensive margin. The *intensive margin* captures the contribution of predetermined price adjustments and is connected to the observed frequency of price changes. The *extensive margin* captures the contribution of price adjustments that are triggered or cancelled by the shock. It is at the heart of many debates about how item-level price stickiness translates into aggregate price stickiness, and is the key statistic that our paper aims to quantify.

The extensive margin depends on what we call the *individual reset price*; that is, the posted price that a firm would set if granted a *one-time* opportunity to adjust it for free, with all constraints otherwise remaining in place (including the possibility that the posted price will not change for some time). If individual reset prices were observed, one could assess the role of the extensive margin by studying how deviations of posted prices from individual reset prices are distributed and how these deviations influence price adjustment decisions. However, partial identification is possible by noting that, in a broad class of models, firms *reveal* their individual reset price whenever they adjust their posted price. The history of price adjustments can therefore provide a benchmark for the path of individual reset prices. Individual price changes can also reveal the amount of price pressure having accumulated

between adjustment periods, making the distribution of price changes an informative object about underlying inflation.

We next show how one can use variation in the shape of the distribution of nonzero price changes to derive lower bounds on the importance of adjustment along the extensive margin. If the timing of all price changes was predetermined, then an inflationary shock would simply create additional price pressure on items. As a result, the distribution of individual price changes would shift laterally by an amount equivalent to the extra pressure. Our procedure compares the observed distribution to an estimate of the distribution that would have prevailed in the absence of the shock. Any evidence that the two distributions differ by more than a translation is attributed to the extensive margin. We apply our procedure to the study of three macroeconomic shocks whose timing and size are rather well identified: the sudden devaluation of the Mexican peso in late 1994 and the hikes in the Mexican value-added tax (VAT) in April 1995 and January 2010. Our results point to substantial price level flexibility that was due primarily to changes in the timing of price adjustments.

The extensive margin can be especially important in the presence of a selection effect by which items having accumulated much price pressure are especially likely to have the timing of their adjustment altered by shocks. Such a selection effect was highlighted in the work of Caplin and Spulber (1987) and Golosov and Lucas (2007), and later clarified in CE, as the root of the lack of intrinsic persistence in standard menu-cost models. In the absence of a selection effect, the accumulation of aggregate price pressure should lead to a rise in the average size of individual price changes. To check whether this is the case empirically, we use the massive repricing of items created by the Mexican VAT hike in April 1995 to compute the distribution of consumer price changes in an environment dominated by aggregate reset price inflation. We find no drift in the average price change even as large amounts of aggregate reset price inflation accumulate, consistent with strong selectivity.

We find more direct support for a selection effect by studying how price adjustment decisions relate to deviations from the price of local competitors, which we use as a proxy for the individual reset price. We undertake this task using the IRI Marketing database, a very large (and relatively new to macroeconomists) dataset of weekly scanner prices from grocery stores and drugstores across the United States. The exceptional sample coverage makes it possible to track prices of identical items across multiple competing outlets. We follow Campbell and Eden (2010) in calculating the deviation from the average price of local competitors at the UPC-market level. After accounting for permanent differences across stores, we find somewhat limited dispersion in the level of prices within local markets. Some of that dispersion is due to firms choosing prices away from those of their local competitors,

which cautions against interpreting all forms of price dispersion as evidence of resource misallocations. We also find support for an adjustment probability that increases in our proxy of the (absolute) deviation. Like the limited price dispersion, this finding is consistent with a selection effect. Finally, we use our estimates of the distribution of deviations and of the probability of a price change conditional on the deviation to compute the extensive margin directly from the micro data. This exercise again points to an economically important role of changes in the timing of price adjustments for price level flexibility.

The paper is organized as follows. Section 2 presents our conceptual framework, highlights the importance of price adjustments triggered or cancelled by shocks in connecting micro and macro price stickiness, and discusses their identification. Section 3 proposes a method for bounding the importance of the extensive margin and applies it to the study of three macroeconomic shocks. Section 4 uncovers evidence of a selection effect in micro price adjustment by first analyzing the distribution of price changes as price pressure builds up, and then by estimating the adjustment hazard. Section 5 offers some concluding remarks.

2 Conceptual Framework

We use a variant of the generalized Ss model developed in a series of papers by Caballero and Engel (1993a, 1993b, and 1999) to formalize the link between changes in the timing of individual price adjustments and macro price flexibility. The main appeal of this sticky-price framework is that it encompasses several pricing mechanisms commonly used in macroeconomic applications and can incorporate real rigidities.

2.1 Economic Environment

We assume that time is discrete and that the length of the time intervals match that of price collection. The economy is populated by a continuum of firms indexed by $i \in [0, 1]$. Each firm produces a single item sold directly to consumers. Due to the presence of nominal rigidities, the *posted price*, $p_{i,t}$, may deviate from the target price, $p_{i,t}^*$, between price adjustment periods (all prices are in natural logs). The object $p_{i,t}^*$ corresponds to the posted price chosen by a firm granted a *one-time* opportunity to adjust it freely, with all constraints otherwise remaining in place, including the possibility that the new price may be sticky in subsequent periods. In choosing $p_{i,t}^*$, the firm takes into account how today's posted price impacts profitability in the current and future periods; therefore, it generally differs from the price that maximizes current-period profits.³ We will refer to $p_{i,t}^*$ as the firm's *individual reset*

³The concept of a price that maximizes current-period profits—either in a partial equilibrium or in a frictionless general equilibrium environment—and the concept of a price that maximizes the present

price. Our terminology highlights the connection between $p_{i,t}^*$ and the posted price chosen by the firm when resetting it. It also ties in with the idea of aggregate *reset price inflation* studied by Bills, Klenow, and Malin (forthcoming), who recover the component of innovations to individual reset prices that is common across items under specific pricing assumptions.

Because the individual reset price is a forward-looking object, it can be a complicated function of how the economy is expected to evolve over time, and how that evolution impacts future price adjustment decisions. In our benchmark specification, we assume that innovations to $p_{i,t}^*$ are described by

$$\Delta p_{i,t}^* = \pi_t^* + \nu_{i,t}, \tag{1}$$

where π_t^* is aggregate reset price inflation and $\nu_{i,t}$ is a mean-zero idiosyncratic component that is *iid* across firms and over time. Our specification of $\nu_{i,t}$ introduces a random-walk element in individual reset prices. We make no particular assumption regarding the process describing the aggregate component of individual reset prices, except that its innovations, π_t^* , are common across items. For consistency, we also impose that firms share the same price-setting mechanism, to be described shortly. These simplifying assumptions are unlikely to hold in reality. For instance, differences in price stickiness, real rigidities, or item durability can lead to heterogeneous responses to aggregate shocks.⁴ We partially address this concern in our empirical implementation by considering relatively homogenous groups of products.

The decision to change the posted price is made after observing the shocks and aggregate variables in the period. We define the deviation from the individual reset price as $x_{i,t} = p_{i,t-1} - p_{i,t}^*$, where $p_{i,t-1}$ is the firm's posted price inherited from the previous period. Following CE, we postulate that the probability of observing a price change is a time-invariant smooth function of the deviation from the individual reset price, $\Lambda(x_{i,t})$, called the “adjustment hazard function.” The model gives rise to infrequent and lumpy price adjustments, which is a central feature of consumer price data that we seek to reproduce.⁵

One appealing aspect of postulating a smooth adjustment hazard function is that forecasting individual price adjustments is typically a difficult task, as periods marked by frequent price changes are sometimes followed by long spells of inaction (and vice-versa) with no apparent change in economic conditions. The adjustment hazard captures this randomness by

discounted stream of profits at times overlap in the work of Caballero and Engel. In a menu-cost model, these concepts coincide when innovations to the frictionless optimal price follows a random walk with no drift and firms set prices under certainty equivalence. Departure from either of these assumptions breaks the equivalence between the two concepts.

⁴Barsky, House, and Kimball (2007) and Gopinath and Itskhoki (2010) highlight this heterogeneity in the presence of differences in durability and the degree of real rigidities, respectively.

⁵Woodford (2008 and 2009) provides micro-foundations for a smooth adjustment hazard increasing in the absolute size of the deviation.

leaving some uncertainty regarding the timing of adjustments. Its dependence on $x_{i,t}$ allows for the possibility that large deviations, which are suboptimal from the point of view of profit maximization, are more likely than small ones to trigger price adjustments. The function can also embed asymmetries in the response to positive and negative deviations that some authors argue could play a role in explaining apparent differences in the response of aggregate inflation to positive and negative shocks (e.g., Caballero and Engel [1993b]). In what follows, we treat the adjustment hazard as a function of $x_{i,t}$ alone. All results carry through if we instead consider $\Lambda(x_{i,t}, \epsilon_{i,t})$, where $\epsilon_{i,t}$ is a vector of idiosyncratic states that influence the adjustment probability but otherwise have no impact on how a firm's individual reset price responds to an aggregate shock (e.g., month-specific and duration-specific dummies capturing seasonal patterns and duration dependence, respectively).⁶

2.2 Price Adjustment along the Intensive and the Extensive Margins

Given the above assumptions, consumer price inflation can be expressed as

$$\pi_t = - \int x \Lambda(x) f_t(x) dx, \tag{2}$$

where $f_t(x)$ is the density of deviations from individual reset prices prevailing at the beginning of period t . Consider the impact on inflation of an aggregate shock to π_t^* taking place immediately before price adjustment decisions. For now, we assume that the shock, Δm , is fully passed through to individual reset prices, thus ruling out real rigidities. We shall return to the implications of real rigidities shortly. The shock shifts the distribution of deviations from individual reset prices by $-\Delta m$, resulting in observed inflation

$$\pi_t(\Delta m) = - \int (x - \Delta m) \Lambda(x - \Delta m) f_t(x) dx. \tag{3}$$

⁶In theory, the adjustment hazard could depend on aggregate conditions beyond their influence on $x_{i,t}$. Most notably, Sheshinski and Weiss (1977) prove that the width of the Ss band increases with steady-state inflation in a menu-cost model without idiosyncratic shocks. This effect is much weaker in models with idiosyncratic shocks, however, consistent with the empirical evidence. Gagnon (2009) reports that the average absolute size of price adjustments was little impacted by the burst in inflation that accompanied the Mexican Peso crisis. Similarly, Wulfsberg (2009) uncovers no apparent change in the absolute size of price adjustments in Norway as trend inflation fell from around 10 percent in the mid-1970s to 2 percent in the mid-1990s. Both studies note a rise in the average absolute size since the late 1990s but it is difficult to attribute this rise to changing aggregate conditions.

Taking a first-order Taylor series expansion of $\pi_t(\Delta m)$ around $\Delta m = 0$, rearranging terms, and taking the limit as $\Delta m \rightarrow 0$, one obtains

$$F_t^{macro} = \lim_{\Delta m \rightarrow 0} \frac{\Delta \pi_t}{\Delta m} = \underbrace{\int \Lambda(x) f_t(x) dx}_{\text{intensive margin } (\mathcal{A}_t)} + \underbrace{\int x \Lambda'(x) f_t(x) dx}_{\text{extensive margin } (\mathcal{E}_t)}. \quad (4)$$

The above statistic captures the share of an (infinitesimal) aggregate shock to individual reset prices passed-through to posted prices upon impact. CE refer to this object as the *index of macroeconomic flexibility*, which they denote F_t^{macro} . This index has two components. The intensive margin, \mathcal{A}_t , captures the contribution of items whose posted price would have been adjusted *absent the shock*. These items respond to the shock by altering the size of their price adjustment. The extensive margin, \mathcal{E}_t , captures the inflation contribution of items whose price adjustment is either *triggered or cancelled* by the occurrence of the shock, as hinted by the presence of $\Lambda'(x)$.⁷

We note several aspects of equation (4) that are useful in understanding the nature of the two margins and in assessing their empirical importance. First, the intensive and the extensive margins are functions of deviations from individual reset prices, which are typically unobserved. Under the assumptions made thus far, however, firms *reveal* their individual reset price whenever they adjust their posted price. Moreover, the size of price changes corresponds to the amount of price pressure that has cumulated since the last price adjustment. We call these two implications of our framework the *revelation principle*. This principle will play a central role in our empirical strategy, which is laid out in section 3.

Second, the intensive margin has a strong connection to observables. To see this, notice that integrating the adjustment hazard over the distribution of deviations gives the observed frequency of price changes. In low-inflation environments, the fraction of adjusting prices typically does not vary much due to offsetting movements in the number of price increases and price decreases (see Klenow and Kryvtsov [2008] and Gagnon [2009]). For these environments, the average frequency of price changes, \overline{fr} , offers a reasonable approximation of

⁷It should be noted that CE’s usage of the terms “intensive” and “extensive” margins differs from that popularized by Klenow and Kryvtsov (2008). The latter define the extensive margin as the frequency of price changes and the intensive margin as the average size of (nonzero) price changes. These definitions are motivated by Klenow and Kryvtsov’s investigation of how variation in the number of prices changes contributes to inflation dynamics. In contrast with these authors, who seek to explain the *level* of inflation, CE are only interested in the *boost* to inflation due to the aggregate shock. And while the extensive margin in Klenow and Kryvtsov’s decomposition is a function of all price changes, the extensive margin in equation (4) depends only on the subset whose timing is altered by the shock. For example, a shock resulting in the simultaneous cancelling of a price decrease and triggering of a price increase would impact inflation solely through the intensive margin under Klenow and Kryvtsov’s decomposition because it leaves the number of price adjustments unchanged. The same shock would instead operate entirely through the extensive margin under CE’s decomposition. To avoid any confusion, our terminology follows exclusively that of CE.

the intensive margin, \mathcal{A}_t . Appendix B provides estimates of the average frequency of price changes for the U.S. CPI and IRI Marketing scanner database. The extensive margin is more difficult to relate to observables because disentangling items whose price adjustment is either triggered or cancelled by the shock from items whose price adjustment is predetermined is a challenging task. That said, in section 3, we will show how one can use changes in the *shape* of the distribution of price changes to bound its macroeconomic importance.

Third, the decomposition offers an intuitive way of distinguishing between popular time-dependent models, for which the timing of all price changes is predetermined, and state-dependent models, for which the timing of price changes can be impacted by shocks. In time-dependent models such as the popular Calvo (1983) model and fixed-duration contracts (Taylor 1980), by construction $F_t^{macro} = fr_t$. More generally, the frequency of price changes is a lower bound on the index of macroeconomic flexibility because the extensive margin is typically positive.

Fourth, there need not be many price changes triggered or cancelled by a shock for the extensive margin to be a major contributor to the inflation response. In the presence of a *selection effect* by which items with much price pressure are especially likely to have their adjustment either triggered or cancelled by the shock, a small number of items revising the timing of their price adjustment can have a large impact on inflation. For example, if a 1-percent shock to π_t^* induces a firm to raise its price by 10 percent rather than keep it constant (thus releasing pressure accumulated from a variety of sources since its last price adjustment), then the impact of that single price change on inflation will be as large as that of 10 predetermined price changes increasing their size by an extra percentage point. Caplin and Spulber (1987) and Golosov and Lucas (2007) trace the lack of intrinsic persistence in standard menu-cost models to this selection effect.

Fifth, the shape of the distribution of deviations, $f_t(x)$, also affects the magnitude of the selection effect. If $f_t(x)$ is large in regions where $|x|$ is large and the adjustment hazard is steep, then the extensive margin will be important. That said, identifying the distribution of deviations over time can be challenging due to its dependence on the history of shocks, especially in periods of elevated macroeconomic instability. To circumvent this difficulty, our analysis refrains from characterizing the full dynamic process of inflation, focusing instead on the initial response to shocks for which a reasonable estimate of $f_t(x)$ can be computed.

Finally, equation (4) was derived for an infinitesimal shock Δm . In the data, large shocks are not only the easiest to identify but also the most likely to alter the timing of price changes. Inference about the relative importance for shock pass-through of price changes that are predetermined versus those that are triggered or cancelled may thus depend on the magnitude of the shock. One can decompose the initial pass-through to a shock of arbitrary

size as

$$\frac{\Delta\pi_t}{\Delta m} = \mathcal{A}_t + \mathcal{E}_t + \mathcal{O}_t(\|\Delta m\|), \quad (5)$$

where $\mathcal{O}_t(\|\Delta m\|)$ is the sum, scaled by Δm , of all terms of order two or higher in the Taylor-series expansion of $\pi_t(\Delta m)$ around $\Delta m = 0$. The terms \mathcal{A}_t and \mathcal{E}_t are as defined in equation (4). In particular, the intensive margin is the frequency of price changes that would have been observed *in the absence of the shock*. The term $\mathcal{O}_t(\|\Delta m\|)$ converges to zero as $\Delta m \rightarrow 0$. Importantly, it equals zero whenever all price adjustments are predetermined. For this reason, our empirical implementation of equation (5) using observed shocks, which is presented in section 3.1, lumps together \mathcal{E}_t and $\mathcal{O}_t(\|\Delta m\|)$. We will refer to any price movement that contributes to \mathcal{E}_t or $\mathcal{O}_t(\|\Delta m\|)$ as an adjustment *along* the extensive margin.

2.3 The Revelation Principle and the Distribution of Price Changes

Under the revelation principle, individual reset prices are observed whenever posted prices are adjusted. For example, Bills and Klenow (2004) report an average frequency of price changes of 26 percent in the U.S. CPI in the mid-1990s. Applying the principle to these data implies that $p_{i,t}^*$ is observed about a quarter of the time. The revelation principle also leads to new interpretations of the distribution of price changes. For items experiencing a price adjustment, we have $\Delta p_{i,t} = -x_{i,t}$. The distribution of price changes thus maps into the distribution of deviations from individual reset prices that prevailed for price adjusters.

Alternatively, $\Delta p_{i,t}$ equals the cumulative change in the individual reset price since the last nominal adjustment. Hence, for a firm changing its posted price after keeping it constant for τ periods, $\Delta p_{i,t} = p_{i,t}^* - p_{i,t-\tau}^*$. As such, the distribution of price changes can be used to extract information on how price pressure builds over time at the item level. For instance, one can condition this distribution on the number of periods since the last price adjustment (we use this approach in section 4). These observations suggest that the distribution of price changes is a richly informative object and that replicating it in macro models is a key step towards ensuring consistency with microeconomic facts.⁸

These interpretations come with some qualifications. First, Chevalier and Kashyap (2011) present empirical evidence that the price of competing brands may be jointly determined by retailers, so that it may be difficult to analyze individual price decisions separately from those of their close substitutes. Second, there could be environments in which both the timing

⁸See Eden (2001) for an early investigation of how the shape of the distribution of consumer price changes differs between low and high inflation. For U.S. evidence on consumer prices, see Klenow and Kryvtsov (2008), Klenow and Malin (2011), and Berger and Vavra (2011). Calibrations to the distribution of price changes have appeared recently in the literature (e.g., Midrigan [2011] and Costain and Nakov [2011])

and size of price adjustments are predetermined; for example, if firms followed price plans or pre-announced price changes. Price adjustments that do not coincide with a reoptimization obscure the inference about the set of firms adjusting their posted prices in response to shocks. That said, there is limited support for widespread use of pre-announcements, at least at the retail level, and of price plans by firms. Fabiani *et al.* (2006) report that price reviews are more common than price changes among European firms. Alvarez, Lippi, and Paciello (2011) argue that adjusting prices without reoptimizing them is a suboptimal strategy in low-inflation environments. Finally, the individual reset price may not be unique; for instance, when firms follow mixed pricing strategies.⁹ For all situations described above, the revelation principle does not hold with the consequence that individual price changes need not equal the amount of price pressure having accrued since the last adjustment.

2.4 Real Rigidities

We have so far abstracted from real rigidities, which dampen the response of individual reset prices to nominal shocks. Several authors have argued that real rigidities are essential for sticky-price models to generate the observed inertia in aggregate inflation and output.¹⁰ Attempts to infer their importance from micro price data have yielded mixed results.¹¹ We will not seek to reconcile the micro and macro evidence on real rigidities, but simply stress that key properties of equation (4) extend to environments where they are present. To this end, we follow CE in assuming that aggregate reset price inflation is described as

$$\pi_t^* = (1 - a) \Delta m_t + a\pi_t. \quad (6)$$

The parameter a controls the extent to which firms trade-off raising their price in line with the price of their competitors versus matching the rate of money growth, Δm_t . This money growth term should be interpreted as standing for a host of nominal shocks impacting π_t^* , such as nominal wages or the nominal exchange rate. The elasticity a is an index of real rigidities; the smaller is a , the faster the response of individual reset prices to the aggregate shock. The process described by equation (6) should not be seen as a general description of

⁹A multiplicity of optimal prices can arise when the profit function is very flat because firms trade-off the unit markup and the number of consumer purchases. See Eden's (1994) model of uncertain and sequential trade and the search model of Head *et al.* (forthcoming).

¹⁰See Blanchard and Fisher (1989) and Ball and Romer (1990) for early expositions. Christiano, Eichenbaum, and Evans (2005), and Smets and Wouters (2007) argue, as do many others, that the inclusion of real rigidities in DSGE models improves their ability to account for observed aggregate economic dynamics.

¹¹Bils, Klenow, and Malin (forthcoming) note that CPI inflation since the turn of the 1990s is too volatile and transient to be explained by standard sticky-price models, even absent real rigidities. Burstein and Hellwig (2007) and Gopinath and Itskhoki (2011) find moderate amount of real rigidities in retail prices and trade prices respectively, but the accompanying macroeconomic effects are limited.

π_t^* but as a local approximation taken at a particular point in time.¹²

As stated in CE, the presence of real rigidities makes the index of macroeconomic flexibility a nonlinear function of the intensive and extensive margins,

$$F_t^{macro} = \lim_{\Delta m \rightarrow 0} \frac{\Delta \pi_t}{\Delta m} = \frac{(1-a)(\mathcal{A}_t + \mathcal{E}_t)}{1-a(\mathcal{A}_t + \mathcal{E}_t)}. \quad (7)$$

This function is strictly increasing in $\mathcal{A}_t + \mathcal{E}_t$, is bounded between 0 and 1 whenever $\mathcal{A}_t + \mathcal{E}_t \in (0, 1)$, and is decreasing in the extent of real rigidities (i.e., $\frac{\partial}{\partial a} \frac{\Delta \pi_t}{\Delta m} < 0$).¹³ Hence, the main implication of real rigidities is that they dampen the transmission of the shock to individual reset prices. The initial shift in the distribution of deviations from individual reset prices that accompanies a shock Δm is now

$$\Delta \pi_t^* = \left(\frac{1-a}{1-a(\mathcal{A}_t + \mathcal{E}_t)} \right) \Delta m,$$

which is less than Δm whenever $\mathcal{A}_t + \mathcal{E}_t$ is less than 1. Importantly for our empirical analysis, the revelation principle continues to hold: Individual reset prices are revealed through price adjustments and the size of price changes corresponds to the price pressure accumulated since the previous adjustment. Moreover, as was the case in our baseline framework without real rigidities, the extensive margin may add substantially to the flexibility of the price level.

3 Extensive Margin Adjustment to Large Shocks

Our first strategy to assess the importance of adjustment along the extensive margin stems from the following observation: If the timing of all price changes was predetermined, then the initial impact of a shock to π_t^* would be to shift the distribution of individual price changes laterally by the size of the shock. Aside from this translation, the shape of the distribution would be preserved. One can thus measure the importance of adjustment along the extensive margin by comparing the observed distribution of price changes to an estimate of the distribution that would have been observed in the absence of the shock (the “counterfactual distribution”). Although this counterfactual distribution is not observed, one can often infer

¹²Burstein and Hellwig (2007) provide microfoundations for the reduced-form parameter a . In their environment, firms have a CES demand function with elasticity θ , use production functions with decreasing returns in labor of the form $y_i = z_i (l_i)^\alpha$, and face nominal wages determined by $W_t = (M_t)^{1-\gamma} (P_t)^\gamma$. Their linearized solution around the frictionless steady-state has $a = 1 - \frac{1-\alpha\gamma}{\alpha+\theta-\alpha\theta}$.

¹³While intuitive, this latter property does not hold in all environments. Dotsey and King (2005) present an example in which an increase in real rigidities raises the flexibility of the price level. In their menu-cost model, the negative impact on F_t^{macro} of an increase in a is more than offset by the positive impact of a rise in $\mathcal{A}_t + \mathcal{E}_t$ as more firms find it profitable to incur the fixed cost of adjusting prices.

its shape by considering the distribution that prevailed prior to the shock. This section formalizes these ideas and then applies them to the study of the Mexican peso collapse in late 1994 and to the Mexican VAT hikes of April 1995 and January 2010.

3.1 Inference from the Distribution of Price Changes

Let $\mu_t(\cdot)$ and $\tilde{\mu}_t(\cdot)$ be measures representing the observed and counterfactual distributions of price changes, respectively. These measures have a mass point at 0 corresponding to the fraction of items whose price is unchanged. They are otherwise equal to the density of individual price changes. Suppose that an *observable* shock Δm raises all individual reset prices by $\Delta\pi_t^*$ upon impact. We can rewrite observed inflation from equation (3) as

$$\pi_t = - \int (x - \Delta\pi_t^*) \Lambda(x - \Delta\pi_t^*) f_t(x) dx = \int \Delta p_{i,t} d\mu_t(\Delta p_{i,t}).$$

The above equality uses the revelation principle to connect deviations from individual reset prices to observed price adjustments. Absent the shock, inflation would have been

$$\tilde{\pi}_t = \int \Delta p_{i,t} d\tilde{\mu}_t(\Delta p_{i,t}).$$

The difference between π_t and $\tilde{\pi}_t$ is the initial boost to inflation attributable to the shock, $\Delta\pi_t$. Adding and subtracting the inflation contribution of predetermined price changes, $\int \Delta\pi_t^* d\tilde{\mu}(\Delta p_{i,t}) = \widetilde{f}r_t \Delta\pi_t^*$, performing a change of variable, and reorganizing terms, we get

$$\frac{\Delta\pi_t}{\Delta m} = \widetilde{f}r_t \frac{\Delta\pi_t^*}{\Delta m} + \frac{1}{\Delta m} \int \Delta p_{i,t} (d\mu(\Delta p_{i,t}) - d\tilde{\mu}(\Delta p_{i,t} - \Delta\pi_t^*)). \quad (8)$$

The first and second terms on the right-hand side capture the contribution to the index of macroeconomic flexibility of adjustment along the intensive and the extensive margin, respectively. The shock initially shifts the distribution of predetermined price changes by $\Delta\pi_t^*$, resulting in a boost to inflation of $\widetilde{f}r_t \Delta\pi_t^*$. The shock may also trigger or cancel price adjustments, in which case the observed distribution of price changes will differ from the counterfactual distribution shifted by $\Delta\pi_t^*$. Our decomposition attributes any such difference to an adjustment along the extensive margin.

If we knew $\Delta\pi_t^*$, then computing the contribution of adjustment along each margin would be straightforward given an estimate of the counterfactual distribution. Absent knowledge of π_t^* , we can nevertheless compute bounds on the importance of adjustment along the extensive margin. We pursue two strategies to achieve this objective.

First, in our “full-pass-through” approach, we assume full immediate pass-through of

the shock to individual reset prices ($\Delta\pi_t^*/\Delta m = 1$), thus ruling out real rigidities. With estimates of $\Delta\pi_t/\Delta m$ and \widetilde{fr}_t in hand, we then compute the contribution of adjustment along the extensive margin in equation (8) as a residual. To see how this approach provides a lower bound, note that given $\Delta\pi_t/\Delta m$ and \widetilde{fr}_t , the larger is $\Delta\pi_t^*/\Delta m$, the larger will be the importance of adjustment along the intensive margin. Assuming full immediate pass-through to π_t^* of the shock thus minimizes the importance of adjustment along the extensive margin.

In our second approach, we assume that price adjustments triggered or cancelled by the shock are not subject to a selection effect. In such a case, the initial impact of the shock is to shift the counterfactual distribution of price changes by $\Delta\pi_t^*$ and to scale it by a factor fr_t/\widetilde{fr}_t . This situation is similar to what would happen in a Calvo model in which the probability of price adjustment, while exogenous to the firm, varies with the state of the economy. For this reason, and to highlight the model-dependence of this computation, we refer to this approach as “Calvo+.” In the absence of the shock, inflation would be given by $\widetilde{\pi}_t = \widetilde{fr}_t \widetilde{dp}_t$, where \widetilde{dp}_t is the average size of nonzero price changes. Following a shock Δm , and absent real rigidities, the average nonzero price change would increase by Δm and the frequency of price changes would rise to fr_t , so that inflation would equal $\pi_t = fr_t (\widetilde{dp}_t + \Delta m)$. The boost to inflation due to the shock can be written as

$$\Delta\pi_t = \widetilde{fr}_t \Delta m + (fr_t - \widetilde{fr}_t) (\widetilde{dp}_t + \Delta m). \quad (9)$$

Given the observed and the counterfactual distribution of price changes (i.e., with knowledge of fr_t , \widetilde{fr}_t , \widetilde{dp}_t , and $\Delta\pi_t$), one can recover Δm and the respective contributions to $\Delta\pi_t/\Delta m$ of adjustment along the intensive and the extensive margins.

The approaches described above to recover the importance of adjustment along the extensive margin are applicable to the study of the initial response to well-identified aggregate shocks. More generally, one may wonder whether observed price behavior can be used to recover a time series of aggregate reset price inflation and of the importance of adjustment along the extensive margin. In appendix C, we illustrate the challenges of doing so using a related method proposed by *Bils, Klenow, and Malin (forthcoming)*.

3.2 The Late-1994 Peso Devaluation

Prior to the collapse of the peso in late 1994, Mexico was operating under a crawling peg system in which the exchange rate acted as the economy’s *de facto* nominal anchor. Facing escalating pressure on its foreign exchange reserves, the government announced a 15-percent devaluation of the currency on December 19, 1994. The measure proved insufficient and

was abandoned three days later in favor of a free-floating system. A week after the initial devaluation, the exchange rate had lost about 40 percent of its value vis-à-vis the U.S. dollar. Annualized inflation, which had hovered around 7 percent in 1994, jumped to more than 40 percent in early 1995. The devaluation is a particularly interesting shock because it was broadly unexpected and its timing is clear. Moreover, its occurrence late in December means that the price of most items in the CPI had already been collected for that month.

The upper panel of figure 1 shows the distribution of monthly price changes observed in January 1995 along with the distribution that prevailed 12 months earlier, which we use as our counterfactual distribution.¹⁴ We do not depict the mass points at zero because they do not contribute to inflation. The fraction of nonzero price changes doubled from 24.9 percent in January 1994 to 50.7 percent in January 1995, pointing to a major role of the extensive margin in the adjustment to the macro shock. The actual distribution lost some of its mass of negative price changes relative to the counterfactual, especially in the -10 percent to 0 percent range, while gaining significantly more mass on the positive side. The jump in the frequency of price changes was observed across all major groups of products and is perhaps clearest among product categories whose frequencies were initially low to moderate. Processed food and nonenergy industrial goods witnessed increases in the frequency of price changes of 30 percentage points or more. The distribution for unprocessed food, with its pre-shock frequency of price changes around 40 percent, already featured an important role for the intensive margin as a large number of price changes were predetermined. The arrival of the shock pushed the frequency up to about 55 percent.

We compute our two sets of lower bounds to gauge the importance of adjustment along the extensive margin. The first bound posits full immediate pass-through of the nominal exchange rate devaluation, Δe , to the price of imported final consumption items and imported intermediate inputs going into the production of final consumption items. If there are no real rigidities, the change in the optimal reset prices is $\Delta\pi^* = \xi \cdot \Delta e$, where ξ measures the importance of imports in the consumption basket. Based on input-output tables, Burstein, Eichenbaum, and Rebelo (2005) estimate the total import content of Mexican consumption expenditures around that period to be 10.9 percent (and a direct import content only half as large), a figure reflecting Mexico's low openness at the time. Setting $\xi = 0.109$ and $\Delta e = 0.5$ (roughly the peso depreciation in the month that followed its collapse), we get that individual reset prices should have jumped 5 percentage points under full pass through. The second bound is based on equation (9).

¹⁴We use the distribution of price changes 12 months earlier as our counterfactual to account for seasonal repricing, which is especially noticeable for services in January. The results are broadly similar when we perform the analysis using the distribution observed in the fourth quarter of 1994 as the counterfactual.

As seen in table 2, both approaches suggest that adjustment along the extensive margin was the dominant channel. Under the full-pass-through method, the extensive margin accounts for over two thirds of the initial price level response. The Calvo+ method provides a similar lower bound (63 percent). Table 2 also provides estimates by special groups of product using the same value of ξ . With the exception of unprocessed food, all special groups of items suggest contributions of the extensive margin in excess of 75 percent. The relatively small share for unprocessed food likely reflects the initially high frequency of price changes (38.4 percent) which, all else equal, tends to boost the role of the intensive margin. In addition, the import content of unprocessed food items may have been higher than 10.9 percent, which would tend to raise the lower bound on the extensive margin. Finally, we note that the shape of the actual distributions of price changes displayed in figure 1 appears inconsistent with the random selection of items whose price change is triggered by the shock. In particular, the positive skewness increased following the shock, which is suggestive of a role for the selection effect in the extensive margin, contrary to the assumption behind the Calvo+ method.

Our full-pass-through method assumed that the devaluation was the only shock to individual reset prices in late 1994. However, the rise in the price level in 1995 was much larger than implied by the devaluation alone, hinting that other factors also pushed up individual reset prices. Some of these factors arguably had limited impact initially. Notably, monetary policy was tight in early 1995 as the central bank pushed up overnight rates to contain the outflow of capital. In addition, labor costs did not accelerate until late 1995. Also consistent with a somewhat moderate initial response of individual reset prices is the change in inflation expectations. According to a survey of private forecasters conducted by the Bank of Mexico (reported by Capistrán and López-Moctezuma [2010]), respondents surveyed in January and February 1995 expected consumer prices to rise 25 percent over the course of the year, roughly half the observed increase that year but significantly more than the 7 percent rise experienced in the twelve months to December 1994. As an alternative gauge of the amount of price pressure, we recomputed our bounds assuming that the initial shock to reset prices was 18 percentage points. This alternative scenario, also reported in table 2, implies that almost a third of the shock was passed-through to prices upon impact, with the extensive margin making a significant contribution in most groups of products.

To put our bound estimates into perspective, recall that the extensive margin is zero whenever the timing of all price adjustments is predetermined. The working paper version of CE further shows that, as a rule of thumb, the extensive margin approximately accounts for two-third of the index of macroeconomic flexibility in models featuring a smooth adjustment hazard that is increasing in the (absolute) size of deviations and is zero if no price pressure

is present. Our bound estimates derived from the revision to inflation forecasts are an intermediate case between these two benchmarks, whereas our bounds obtained under full exchange rate pass-through are aligned with CE's rule of thumb.

On a related note, micro price studies have documented the presence of seasonal patterns in the timing of consumer price adjustments for many product categories. Several authors (e.g., Dhyne *et al.* [2005]) have associated such patterns to features of time-dependent pricing models and to fixed-duration contracts in particular. However, a preference for implementing price changes at particular times of the year needs not imply that the timing of price changes is exogenous to the firm. The behavior of services prices in the wake of the peso crisis illustrates this point. From 1995 to 2000, a quarter of these prices were adjusted every January, a figure almost twice as large as in other months of the year (13 percent). As the inflationary consequences of the peso crisis drew to an end, the January frequency of price changes stepped down to below 15 percent in 2001 and stayed near that level thereafter. This step down offers further evidence that the number of firms adjusting their price is responsive to aggregate conditions, consistent with an economically important role of adjustment along the extensive margin.

3.3 Hikes in the Mexican Value-Added Tax

Changes in VAT are relatively simple to study because their timing and size are observed by economic agents. Mexican firms must include the VAT and mandated duties in their posted prices. Changes in VAT affect effective mark-ups over costs, creating an incentive for price adjustments. About a third of items in the Mexican CPI excluding housing rents are subject to either the VAT or special duties. Exempt items include most education services, food at home excluding beverages, patented drugs, and books and periodicals. Items subject to special duties include gasoline, phone lines, tobacco products, and alcoholic beverages. The most recent VAT hike occurred on January 1, 2010, when the rate rose by one percentage point throughout Mexico. This shock was much smaller than the devaluation and thus less likely to present strong nonlinear effects (i.e., $\mathcal{O}_t(\|\Delta m\|)$ in equation (5) is likely small). Firms had a few price collection periods to prepare for its implementation. The VAT hike also coincided with a rise in special duties on a few products. A more substantial 5-percentage point hike took place amid the peso crisis on April 1, 1995, when the Mexican government, faced with an urgent need for revenues, increased the rate from 10 to 15 percent. Its large size aside, two features make the 1995 hike particularly interesting. First, it was decreed on March 18, giving retailers little notice before its enactment. Second, firms located in the touristic regions of Baja California and Quintana Roo, and within a narrow corridor along

the country's southern and northern international borders, were exempt from the hike. We will use these regions as a control group to analyze the impact of the hike.

Figures 2 and 3 show the observed distributions of price changes associated with the January 2010 and April 1995 VAT hikes, respectively. For the 2010 hike, our counterfactual distribution is the average density of price changes in the month of January during the years 2003 to 2007. For the 1995 hike, our counterfactual distribution is the one that prevailed that month in regions not subject to the increase. This regional difference approach helps control for macroeconomic shocks other than the VAT hike that likely influenced pricing decisions at the time, notably the sharp contraction in economic activity.

For both hikes, we find strong responses of the frequency of price changes. Price changes among taxable items were twice as frequent in January 2010 (38.5 percent) than in January of 2003 to 2007 (average of 17.9 percent). In April 1995, 75.6 percent of taxable items in regions subject to the hike experienced a price adjustment, compared to 48.0 percent in regions exempt from the hike. As is apparent from figures 2 and 3, a large proportion of price changes clustered around 1 percent in 2010 and 5 percent in 1995. Many firms also seized the opportunity to raise prices by more than the hike, providing evidence that price pressure from other sources was being released in the process. Note that these relatively large price adjustments triggered by the shock are especially important contributors to the initial pass-through. For items exempted from the VAT hikes, such as food products, the observed and counterfactual distributions of price changes had similar shape during both VAT hike episodes.

Under the assumption of full immediate pass-through of the VAT hike, the price of taxable items should have risen 0.90 percent in 2010 and 4.45 percent in 1995. As reported in table 3, the observed rate of inflation for taxable items in 2010 was 0.65 percentage point higher than the counterfactual rate, consistent with an index of macroeconomic flexibility of about 75 percent. The initial pass-through rate was especially high for taxable nonenergy industrial goods (83.6 percent) but only about a third for taxable services. The difference in inflation for taxable items in April 1995 between regions subject to and exempt from the hike is consistent with a somewhat lower index of 62.8 percent. However, this estimate likely understates the initial pass-through rate in April 1995. Inflation was running higher in exempt regions in early 1995, consistent with border regions experiencing greater price pressure from the devaluation. If we add the inflation differential for non-taxable items observed in April 1995 to the inflation response of taxable items, then we obtain an initial pass-through rate closer to 80 percent.

Table 3 also reports lower bounds on the relative importance of adjustment along the extensive margin. For the 2010 hike, the full-pass-through method suggests that at least

three quarters of the observed jump in $\Delta\pi$ was attributable to adjustment along the extensive margin, a finding that holds for both goods and services. The corresponding lower bounds for 1995 are noticeably smaller at about a quarter or less. This result is unsurprising in light of the high frequency of price changes under the counterfactual scenario, which implies that the timing of a large number of price adjustments was determined ahead of the tax hike. These results offer an interesting contrast between the sources of adjustment to the two VAT hikes. While both episodes shared similar degrees of initial pass-through, price adjustment in the low-inflation environment of 2010 operated to a greater extent via the extensive margin—despite a smaller shock—than in the high-inflation environment of 1995.¹⁵

We also note that several implications of the Calvo+ lower bound method are counter-intuitive. Absent a selection effect, Δm is revealed by the difference between the observed and counterfactual average (nonzero) price change. This difference was negative for some groups of products, notably services, following the VAT hikes, leading to the unappealing implication that the shock was deflationary. And for categories with positive estimates of Δm , we sometimes find that the index of macroeconomic flexibility is greater than one. Such an overshooting is at odds with the data because we find no evidence of inflation payback (or, for that matter, continued pass-through) in the months that followed the hikes. We interpret these counterintuitive implications as the data rejecting the absence of selection effects in the response to the VAT hike, as posited by the Calvo+ approach.

4 Some Evidence of a Selection Effect

Adjustment along the extensive margin could be especially relevant for macro price stickiness if items with large deviations from their individual reset price are more likely than others to have the timing of their price adjustment altered by shocks. This section first documents indirect manifestations of such a selection effect on the observed distribution of price changes, and then attempts a more direct assessment by studying how a firm’s pricing decisions relate to those of its local competitors.

4.1 Price Pressure and the Distribution of Price Changes

One consequence of the presence of a selection effect is that the distribution of deviations should remain relatively compact. This observation has testable implications for the shape of the distribution of nonzero price changes. Absent a selection effect, the size of (nonzero)

¹⁵Our Mexican sample does not allow us to explore asymmetries in price adjustments to VAT increases and decreases. Karadi and Reiff (2010) report greater pass-through for VAT hikes than for VAT cuts in Hungarian data.

individual price changes should equal, on average, the amount of aggregate reset price inflation having accrued since the last adjustment. Also, absent a selection effect, the dispersion of individual price changes should rise as idiosyncratic shocks pile up. The data provide little empirical support for either phenomenon.

We use the massive repricing of items associated with the April 1995 Mexican VAT hike to look for a drift in the mean price change conditional on the number of periods since the last adjustment (a statistic called the “duration” or the “age of the price” in the literature). Although we do not observe aggregate reset price inflation directly, we know that it was substantial at the time because price adjustments were frequent and the CPI rose 40 percent in the 12 months that followed the hike. We consider only items that experienced a price change in April 1995, so that any pressure on individual reset prices stemming from the VAT hike and other sources should have been released that month. We then look at the first price adjustment that followed the hike conditional on the duration of the price. For example, the 3-month-duration distribution uses only items that experienced a price change in April 1995 and had their next price change in July 1995. Such a conditioning ensures that items have similar degrees of cumulated aggregate reset price inflation given the timing of their first price adjustment following the VAT hike.

As figure 4 shows, the distributions of price changes are remarkably similar across durations. For all special groups of products considered, we find no apparent rise in the mean nonzero price change in the first six months following the hike. For instance, the average price change among nonenergy industrial goods was roughly 10 percent whether items had their first adjustment one month, three months, or six months after the VAT hike. The rise in the price index of nonenergy industrial goods differed much over these horizons, however, at 7 percent after one month and at almost 20 percent after six months. Our findings are similar for other groups of products. A related observation is that the average price change taking place shortly after the VAT hike is larger than the amount of cumulated inflation, whereas the average price change taking place several periods after the VAT hike is smaller than the amount of cumulated inflation. This behavior is consistent with early price changers having initially more price pressure to release than others in the sample due to idiosyncratic factors, and late price changers initially benefiting from an offsetting of aggregate reset price inflation by idiosyncratic shocks, thus limiting the extent of the deviation from their individual reset price.

To gauge the degree of similarity across the distributions at various durations, we compute Kolmogorov-Smirnov statistics to test the hypothesis that the samples of nonzero price changes used to compute the distributions at various durations are drawn from the same population. In the vast majority of cases, we cannot reject at the 5-percent significance

level that pairs of the distributions shown in figure 4 are statistically different.¹⁶ One may suspect that the absence of rejection is due to the low power of the Kolmogorov-Smirnov test, especially given that the number of usable observations declines rapidly with the duration considered. However, the test would have easily rejected the null of no difference in nearly all cases if the mean of the distributions had drifted by the amount of cumulated inflation.

Low-inflation environments arguably provide better conditions to identify any drift in the dispersion of nonzero price changes as idiosyncratic shocks accumulate. Figure 5 presents the distributions in the U.S. consumer prices for four special groups of products. We find no obvious increase in the dispersion of price changes as a function of duration, consistent with a selection effect limiting the size of price adjustments as idiosyncratic shocks accumulate. If anything, some groups of products display a small decrease in the dispersion of price changes conditional on the duration. Arguably, our distributions do not control for heterogeneity in price-setting practices, which could imply, for example, that items with relatively elevated idiosyncratic noise choose to reprice more often than those facing less volatility. Nevertheless, the findings are consistent with that reported by Campbell and Eden (2010) and Klenow and Kryvtsov (2008), who control for such heterogeneity.

4.2 Local Competition and the Adjustment Hazard

We next investigate how an item’s price adjustment probability relates to the deviation from its individual reset price. An immediate difficulty in pursuing this objective is that the deviation is typically not observed unless there is a price adjustment. There are two approaches in the literature for dealing with this hurdle. The first approach is to parametrize the shape of the adjustment hazard to target moments of some aggregate variables of interest (e.g., Caballero and Engel [1993a and 1993b]). It has the benefit of not requiring the identification of individual reset prices but comes at the cost of ignoring rich micro data information. The second approach, which we follow below, is to proxy the deviation using information from observables. This approach has notably been employed to study car purchase decisions by Eberly (1994) and Attanasio (2000), and hiring decisions by Caballero, Engel, and Haltiwanger (1997).

Applications of this latter approach to the study of pricing decisions have been constrained by the lack of micro data that can be used to proxy individual reset prices. We note two exceptions. Using weekly scanner data from a large U.S. retailer, Eichenbaum,

¹⁶The Kolmogorov-Smirnov test assumes equal weights on the observations used to construct the distributions, whereas our distributions weigh observations according to their relative spending share in the sample. Given that our objective is largely illustrative, we calculate the test statistics as if all observations had the same weight.

Jaimovich, and Rebelo (2011) show that the probability of observing a change in an item’s “reference” price (defined as the modal price in the quarter) is increasing in the deviation from the average mark-up over the vendor cost (measured at the UPC-store level). Their estimates imply a potent selection effect: a 5-percentage-point increase in the deviation from the average markup raises the probability of adjusting the reference price during a given week by over 10 percentage points. A related finding is that deviations from the average markup are small, with 90 percent of items having an absolute deviation of 10 percentage points or less.

The other notable exception, which we follow below, is Campbell and Eden (2010), who use weekly scanner data from two small Midwestern cities. They report that the probability of observing a price change is increasing in the deviation between an item’s price and the average price of local competitors selling the same UPC. A rationale for their approach is that individual reset prices, when measured at the UPC-market level, may comove strongly due to similarities in costs and the degree of local competition. Indeed, we will provide evidence of limited dispersion in the level of prices across stores. There are also limitations to this approach. Deviations from the average price of local competitors abstract from idiosyncratic factors influencing individual reset prices. And even if firms shared the same individual reset price, the deviation may imperfectly proxy for the actual amount of price pressure because the average price of local competitors only gradually reflects common shocks due to nominal rigidities.

4.2.1 Proxying for the Deviation

We use the SymphonyIRI Marketing dataset to investigate pricing decisions and local competition. As appendix A details, this dataset contains UPC-level information on weekly sales and prices of U.S. grocery stores and drug stores. It allows us to control for the geographic location and to identify stores belonging to the same retail chain. The sample size is unusually large at about 300 billion individual price observations per year. The dataset covers staple food (e.g., carbonated beverages, condiments, and cereals) and personal care products (e.g., toilet paper and laundry detergent). We converted the price series to a monthly frequency, as explained in appendix A.

To construct an estimate of the deviation, we follow Campbell and Eden (2010) in defining the average price of store i ’s local competitors in month t ,

$$\bar{p}_{-i,t} = \sum_{s \neq i} \omega_{-i,s,t} p_{s,t}.$$

The weight $\omega_{-i,s,t}$ is the share of total UPC sales by item i ’s local competitors that is

accounted for by store s on a yearly basis. We then compute the deviation from $\bar{p}_{-i,t}$ prevailing at the beginning of the period, $\hat{x}_{i,t} = p_{i,t-1} - \bar{p}_{-i,t}$. There could be factors leading to permanent differences in the level of prices across stores, even conditioning on the UPC and market. For example, the Chicago-area grocery chain Dominick’s Finer Foods uses a four-tier system to set the level of prices across its stores in order to account for differences in consumer price sensitivity and the degree of local competition. For this reason, we use demeaned time series of the deviation unless otherwise indicated.

As section 2.3 mentions, only price adjustments coinciding with a reoptimization should be comprised in the intensive and the extensive margins. Accordingly, in addition to using posted prices, we consider a “regular” price series excluding one-month temporary price drops and a “reference” price series computed as the modal posted price observed during a 13-week period centered around the 15th day of the month. Our objective is not to dismiss sales and nonreference prices as channels for the transmission of shocks. On the contrary, there is mounting evidence that these prices are responsive to aggregate conditions, although the extent of this response remains the subject of ongoing debate.¹⁷ Instead, we use these alternative price series to provide statistics under a wider range of assumptions regarding the set of price adjustments coinciding with a reoptimization. Appendix A details the construction of these series.

4.2.2 Local Price Dispersion and the Nonparametric Adjustment Hazard

We first use our estimates $\hat{x}_{i,t}$ to document the importance of dispersion in the level of prices across stores at the UPC-market level.¹⁸ We sort $\hat{x}_{i,t}$ from all UPCs and markets with sufficient observations into 1-percentage-point bins, pooling together observations from all months. The distributions weigh equally all UPC-market combinations. As a first step, observations for a UPC-market combination are also weighted uniformly to highlight price dispersion across stores. The upper panel of figure 6 shows the resulting distributions of deviations for posted, regular, and reference prices before demeaning $\hat{x}_{i,t}$. The distributions are clearly skewed to the right of zero: About 10 percent of observations for posted prices and regular prices have $\hat{x}_{i,t} < 0$, a proportion that doubles to 20 percent for reference prices. The explanation for this skewness is that total UPC sales within local markets tend to be dominated by a small number of stores with relatively low prices. The distributions also have

¹⁷See Klenow and Malin (2011) for a recent survey and several new facts, and Chevalier and Kashyap (2011) for evidence that multi-product retailers may adjust the frequency and intensity of sales in response to aggregate shocks.

¹⁸Consistent with the CE decomposition, $\tilde{x}_{i,t}$ measures the deviation *before* an item’s price adjustment decision, whereas previous studies of price dispersion (e.g., Reinsdorf 1994) focus on the deviation *after* price adjustments take place. The shape of the distributions is little changed when we adopt this alternative timing.

a relatively high density at or near zero due to some UPC-market combinations displaying little if any dispersion in the level of prices.¹⁹ The lower panel of figure 6 reports the distributions after demeaning $\hat{x}_{i,t}$ by its average over time. These distributions are relatively tight, which suggests that fluctuations in the level of prices are somewhat limited once one accounts for permanent differences across stores.

We note at the outset that some of the observed price dispersion is not due to nominal rigidities hampering price adjustment in response to shocks, but is rather traced back to firms' own pricing decisions. The upper panel of figure 7 illustrates this fact by showing how prices at the edges of the distribution tend to be relatively young. The average age of posted, regular, and reference prices peaks near 5 months, 6 months, and 10 months, respectively, for $\hat{x}_{i,t}$ near zero. The average age then falls steadily as we consider increasingly large absolute deviations from the average price of local competitors. In the case of posted and regular prices, the average age of items with an absolute deviation around 20 percent is roughly 40 percent smaller than that of items with a deviation near zero. The relative age difference is even larger for reference prices. These findings are consistent with those of Campbell and Eden (2010), though obtained with a much larger sample, and caution against associating all forms of price dispersion with resource misallocation. Consequently, we will take this feature of the data into account in our subsequent analysis.

The middle panel of figure 7 plots the nonparametric adjustment hazard, $\hat{\Lambda}(\hat{x}_{i,t})$, obtained by computing the price change frequency for each 1-percentage point bin. Unsurprisingly, $\hat{\Lambda}(\hat{x}_{i,t})$ is highest for posted prices, which are relatively flexible, and lowest for reference prices, which are relatively sticky. More importantly and consistent with the presence of a selection effect, $\hat{\Lambda}(\hat{x}_{i,t})$ is increasing in the absolute deviation from the average price of local competitors. One may suspect that this phenomenon is driven by temporary sales and promotions, which can cause posted prices to be temporarily located on the edges of the distribution of deviations. However, the V shape is preserved when we exclude sales and nonreference price changes. For instance, the probability of observing a reference price change leaps from 7 percent when the item's price equals the average reference price of its local competitors, to between 20 percent and 30 percent when its (absolute) deviation reaches 20 percent.

The bottom panel of figure 7 shows that the median firm adjusts its reference price by the full size of its price gap vis-à-vis local competitors (i.e., $\Delta p_{i,t} \approx -\hat{x}_{i,t}$). A similar conclusion holds for posted prices and regular prices (not shown). That said, there is some heterogeneity

¹⁹The spike near zero diminishes when we increase the minimum number of stores required for a UPC-market combination to be included in the sample or when exclude stores belonging to the same chain as store i from the calculation of $\bar{p}_{-i,t}$. Our central finding of limited price dispersion remains, however.

in the size of price changes conditional on $\hat{x}_{i,t}$, as evidenced by the 10th and 90th percentile lines reported in the panel. This variation suggests that, while $\hat{x}_{i,t}$ is a roughly unbiased estimate of the actual deviation, $x_{i,t}$, it misses other factors influencing individual reset prices.

Figures 8 and 9 provide some evidence that the shape of $\hat{\Lambda}(\hat{x}_{i,t})$ is robust to alterations to our baseline methodology. First, it retains its V shape when we compute it for narrower product categories, as illustrated in figure 8 for salty snacks, carbonated beverages, cold cereal, and frozen dinners. Second, we allow for the possibility that pricing decisions are made at the chain level rather than at the store level by excluding stores belonging to the same chain as retailer i from the computation of $\bar{p}_{-i,t}$. The upper panel of figure 9 shows that the resulting adjustment hazard is only a bit flatter than our benchmark case for reference prices. The findings are qualitatively similar for posted prices and regular prices when we control for chains (not shown). Third, figure 9 also presents the nonparametric adjustment hazard obtained when the deviation is constructed using only the average price of the local competitors that have reset their price over the previous six months. In this case, $\hat{\Lambda}(\hat{x}_{i,t})$ is a bit steeper than in our benchmark case. Finally, the lower panel of figure 9 reports $\hat{\Lambda}(\hat{x}_{i,t})$ conditional on the age of the price. While the V shape is preserved at all durations considered, the level of the estimated adjustment hazard declines with the age of the price, consistent with negative duration dependence in the data.

4.2.3 Parametric Estimation of the Adjustment Hazard

The nonparametric nature of our analysis so far has precluded us from controlling for various factors that could affect the shape of the adjustment hazard function, such as seasonal repricing and a selection bias by which items with large deviations are drawn from UPC-market combinations with relatively flexible prices. To assess whether these elements impact our findings, in particular the V shape of the adjustment hazard, we estimate linear probability models with item fixed effects in the spirit of Campbell and Eden (2010). We focus on reference prices to further limit the risk that sales, promotions, and other transitory price movements bias our estimate of $\Lambda(x)$, and UPC-store fixed effects are also included. Our specification is

$$I_{(\Delta p_{i,t} \neq 0)} = \beta_{i,0} + \beta_1^{\text{neg}} \hat{x}_{i,t}^{\text{neg}} + \beta_1^{\text{pos}} \hat{x}_{i,t}^{\text{pos}} + \Gamma' Z_{i,t} + \varepsilon_{i,t},$$

where $I_{(\Delta p_{i,t} \neq 0)}$ is an indicator variable that item i 's price has changed, $\hat{x}_{i,t}^{\text{neg}}$ is $\hat{x}_{i,t}$ whenever $\hat{x}_{i,t} < 0$ and zero otherwise, $\hat{x}_{i,t}^{\text{pos}}$ is similarly defined for positive deviations, and $Z_{i,t}$ is a vector of control variables that include period dummies, the age of the price, and a measure

of store size (total yearly revenues). $\hat{x}_{i,t}^{\text{neg}}$ and $\hat{x}_{i,t}^{\text{pos}}$ allow the adjustment hazard to have different slopes for negative and positive deviations. We also considered higher-order terms but their economic significance was minimal. We cluster the standard errors at the store level and, given the expansive size of the IRI Marketing dataset, run the regressions at the product category-market level. We only include in our sample items from UPC-market combinations that have at least 10 observations.

The first three columns of table 4 display the estimated coefficients for three product category-market combinations: salty snacks in New York City, carbonated beverages in Los Angeles, and frozen dinners in Boston. All slope coefficients are statistically significant and increasing in the (absolute) size of positive and negative deviations. In addition, the slopes are comparable in magnitude to those obtained in our nonparametric exercise. As was the case earlier, the results point to a steeper adjustment hazard for negative deviations than positive ones, suggesting that relatively low prices are especially unlikely to persist for long.²⁰

We also ran regressions with duration-specific dummies to determine whether the shape of the adjustment hazard is driven by young prices. The results reported in table 5 show that this is not the case. The coefficients on the duration-specific dummies are economically small and often not statistically significant, indicating that the age of prices is not an important determinant of the slope of the adjustment hazard function. The lack of any improvement in the goodness of fit relative to the benchmark regressions in table 4 is consistent with this conclusion.

4.2.4 Local Competition and the Index of Macroeconomic Flexibility

Our benchmark nonparametric hazard has proven robust to controlling for several elements unrelated to the selection effect that could influence its slope. Consistent with the limited amount of price dispersion across stores shown in figure 6, we see our regression results as evidence that the timing of pricing decisions is sensitive to deviations from individual reset prices, and that adjustment along the extensive margin may play a role at the macroeconomic level. If we believe that the deviation from the price of local competitors ($\hat{x}_{i,t}$) and our estimate $\hat{\Lambda}(\hat{x}_{i,t})$ are good proxies for the deviation from the actual individual reset price ($x_{i,t}$) and adjustment hazard function ($\Lambda(x_{i,t})$), respectively, then we have all the elements needed to estimate the intensive and the extensive margins in equation 4 directly on the micro data. Specifically, the intensive margin can be obtained by integrating $\hat{\Lambda}(\hat{x}_{i,t})$ over the distribution of $\hat{x}_{i,t}$, and the extensive margin can be recovered by integrating the product

²⁰We also ran separate regressions for price increases and price decreases (not reported). We found that the magnitude of the negative deviation ($\hat{x}_{i,t} < 0$) has a large impact on the probability of a price increase, but almost no impact on the likelihood of price decreases. The reverse is true for positive deviations.

of $\hat{x}_{i,t}$ and the derivative of $\hat{\Lambda}(\hat{x}_{i,t})$ over the distribution of $\hat{x}_{i,t}$.

Table 6 shows our estimates of \mathcal{A} and \mathcal{E} when we perform such an exercise. We recover the slope of $\hat{\Lambda}(\hat{x}_{i,t})$ separately for positive and negative deviations with linear regressions using the point estimates for each 1-percentage point bin in figure 7 as observations. Absent real rigidities, the index of macroeconomic flexibility ranges from 0.13 for reference prices to 0.37 for posted prices. About 30 percent of these index values is due to the extensive margin, making this margin an economically important channel of price adjustment irrespective of whether one uses posted, regular, or reference prices. If we instead assume moderate real rigidities ($a = 0.6$) similar to those estimated on retail data by Burstein and Hellwig (2007), then the estimated indexes of macroeconomic flexibility roughly halve. Although these results imply greater macro price stickiness, it does not alter our view about the importance of the extensive margin to F^{macro} .

There is admittedly much uncertainty surrounding these estimates. Importantly, they rely on an imperfect measure of the true deviation from individual reset prices. Whether this measure leads us to underestimate or overestimate the slope of the adjustment hazard is unclear. On the one hand, by omitting idiosyncratic factors, we add noise to the deviation that could bias downward the slope of the adjustment hazard. The importance of the extensive margin in table 6 is also near or below the lower bounds derived in section 3 in the case of adjustment to large shocks. On the other hand, sluggish adjustment of the price of local competitors to shocks could bias upward the slope of the nonparametric adjustment hazard function. For these reasons, we see these estimates as suggestive that the extensive margin is an important channel for macro price adjustment, but more work remains to be done to refine these estimates and broaden the set of products to which they apply.

5 Conclusion

In this paper, we have sought to connect micro price stickiness and macro price stickiness by distinguishing between price changes whose timing is determined ahead of shocks and price changes whose timing is altered by shocks. We have discussed the assumptions under which observed price behavior can be used to infer the importance of each type of price changes for aggregate inflation. We have found compelling evidence that some shocks alter the timing of price changes, contributing significantly to the flexibility of the price level. Using the terminology of Caballero and Engel (2007), this evidence of state-dependent behavior points to an important role for the extensive margin in the initial response of inflation to shocks.

Our findings have several implications for macroeconomic modelling. First, researchers primarily interested in fitting macro facts should be careful when claiming that their models

are consistent with micro facts. The current generation of macro models is still a long way from capturing the richness of pricing strategies employed by firms; some simplification is unavoidable. But, as our findings make clear, models featuring no extensive margin abstract from an economically important channel of adjustment and their calibration should take that aspect into account. Our results also suggest that micro-level price stickiness is at most a moderate contributor to the transmission mechanism. Moreover, rapid initial pass-through of the shocks covered in our study seems mostly incompatible with the presence of strong real rigidities, a conclusion echoing that of Bils and Klenow (2004) and Bils *et al.* (forthcoming) based on the dynamics of sectoral U.S. CPI inflation series.

Obviously, our work leaves several questions unanswered. We have considered only a subset of sectoral and aggregate shocks that share the characteristic of being relatively easy to identify. Micro price adjustment to other types of aggregate shocks—notably monetary shocks—could be more sluggish. Also, there continues to be a lack of microeconomic data on both costs and local competition, which could help refine estimates of individual reset prices between price adjustment periods. Moreover, micro-level price evidence on the importance of real rigidities, which is important for refining estimates of adjustment along the extensive margin, remains constrained by limited data availability.

References

- [1] Alvarez, Fernando, Francesco Lippi, and Luigi Paciello. 2011. “Optimal Price Setting with Observation and Menu Costs.” *Quarterly Journal of Economics* 126, no.4:1909-1960.
- [2] Álvarez, Luis J. and Ignacio Hernando. 2004. “Price Setting Behaviour in Spain: Stylised Facts using Consumer Price Micro Data.” Working Paper Series 416, European Central Bank.
- [3] Attanasio, Orazio P. 2000. “Consumer Durables and Inertial Behaviour: Estimation and Aggregation of (S,s) Rules for Automobile Purchases.” *Review of Economic Studies* 67, no.4:667-96.
- [4] Baharad, Eyal and Benjamin Eden. 2004. “Price Rigidity and Price Dispersion: Evidence from Micro Data.” *Review of Economic Dynamics* 7, no.3:613-641.
- [5] Ball, Laurence M., and David Romer. 1990. “Real Rigidities and the Non-neutrality of Money.” *Review of Economic Studies* 57, no.2:183–203.

- [6] Barsky, Robert B., Christopher L. House, and Miles S. Kimball. 2007. "Sticky-Price Models and Durable Goods." *American Economic Review* 97, no. 3:984-998.
- [7] Barro, Robert J. 1972. "A Theory of Monopolistic Price Adjustment." *Review of Economic Studies* 39, no.1:17-26.
- [8] Berger, David and Joseph Vavra. 2011. "Dynamics of the U.S. Price Distribution." Yale University.
- [9] Bils, Mark and Peter J. Klenow. 2004. "Some Evidence on the Importance of Sticky Prices." *Journal of Political Economy* 112, no.5:947-985.
- [10] Bils, Mark, Peter J. Klenow, and Benjamin A. Malin. (forthcoming). "Reset Price Inflation and the Impact of Monetary Policy Shocks," *American Economic Review*.
- [11] Blanchard, Oliver J. and S. Fisher. 1989. *Lectures on Macroeconomics*. Cambridge: MIT Press.
- [12] Bronnenberg, Bart J., Michael W. Kruger, and Carl F. Mela. 2008. "Database paper: The IRI Marketing Data Set." *Marketing Science* 27, no.4:745-748.
- [13] Burstein, Ariel T. 2006. "Inflation and Output Dynamics with State-Dependent Pricing Decisions." *Journal of Monetary Economics* 53, no.7:1235-1257.
- [14] Burstein, Ariel, Martin Eichenbaum, and Sergio Rebelo. 2005. "Large Devaluations and the Real Exchange Rate." *Journal of Political Economy* 113, no.4:742-784.
- [15] Burstein, Ariel and Christian Hellwig. 2007. "Prices and Market Shares in a Menu Cost Model." NBER Working Papers 13455, National Bureau of Economic Research.
- [16] Caballero, Ricardo J. and Eduardo M.R.A. Engel. 1993a. "Microeconomic Adjustment Hazards and Aggregate Dynamics." *Quarterly Journal of Economics* 108, no.2:359-383.
- [17] Caballero, Ricardo J. and Eduardo M. R. A. Engel. 1993b. "Microeconomic Rigidities and Aggregate Price Dynamics." *European Economic Review* 37, no.4:697-711.
- [18] Caballero, Ricardo J. and Eduardo M. R. A. Engel. 1999. "Explaining Investment Dynamics in U.S. Manufacturing: A Generalized (S,s) Approach." *Econometrica* 67, no.4:783-826.
- [19] Caballero, Ricardo J. and Eduardo M.R.A. Engel. 2007. "Price Stickiness in Ss Models: New Interpretations of Old Results." *Journal of Monetary Economics* 54, (Supplement):100-121.

- [20] Caballero, Ricardo J., Eduardo M.R.A. Engel, and John Haltiwanger. 1997. "Aggregate Employment Dynamics: Building from Microeconomic Evidence." *American Economic Review* 87, no.1:115-137.
- [21] Calvo, Guillermo A. 1983. "Staggered Prices in a Utility-Maximizing Framework." *Journal of Monetary Economics* 12, no.3:383-398.
- [22] Campbell, Jeffrey R. and Benjamin Eden. 2010. "Rigid Prices: Evidence from U.S. Scanner Data." Working Paper Series WP-05-08, Federal Reserve Bank of Chicago.
- [23] Caplin, Andrew S. and Daniel F. Spulber. 1987. "Menu Costs and the Neutrality of Money." *Quarterly Journal of Economics* 102, no.4:703-25.
- [24] Capistrán, Carlos and Gabriel López-Moctezuma. 2010. "Forecast Revisions of Mexican Inflation and GDP Growth." Working Paper 2010-11, Banco de México.
- [25] Carlton, Dennis W. 1986. "The Rigidity of Prices." *American Economic Review* 76, no.4:637-58.
- [26] Carlton, Dennis W. 1989. "The Theory and the Facts of How Markets Clear: Is Industrial Organization Valuable for Understanding Macroeconomics?" *Handbook of Industrial Organization*, ed. by R. Schmalensee & R. Willig, 1 ch.15:909-946.
- [27] Cecchetti, Stephen G. 1986. "The Frequency of Price Adjustment: A Study of the Newsstand Prices of Magazines." *Journal of Econometrics* 31, no. 3:255-274.
- [28] Chevalier, Judith A. and Anil K. Kashyap. 2011. "Best prices." NBER Working Paper 16680.
- [29] Christiano, Lawrence J., Martin Eichenbaum, and Charles L. Evans. 2005. "Nominal Rigidities and the Dynamic Effects of a Shock to Monetary Policy." *Journal of Political Economy* 113, no.1:1-45.
- [30] Costain, James and Anton Nakov. 2011. "Distributional Dynamics under Smoothly State-Dependent Pricing." *Journal of Monetary Economics* 58, no.6-8:646-665.
- [31] Dhyne, Emmanuel, Luis J. Álvarez, Hervé Le Bihan, Giovanni Veronese, Daniel Dias, Johannes Hoffmann, Nicole Jonker, Patrick Lünemann, Fabio Rumler, and Jouko Vilmunen, 2005. "Price Setting in the Euro Area: Some Stylized Facts from Individual Consumer Price Data," Working Paper 524, European Central Bank.

- [32] Dotsey, Michael and Robert G. King. 2005. "Implications of State-dependent Pricing for Dynamic Macroeconomic Models." *Journal of Monetary Economics* 52, no.1:213-242.
- [33] Eichenbaum, Martin, Nir Jaimovich, and Sergio Rebelo. 2011. "Reference Prices and Nominal Rigidities." *American Economic Review* 101, no.1:234-262.
- [34] Eberly, Janice C. 1994. "Adjustment of Consumers' Durables Stocks: Evidence from Automobile Purchases." *Journal of Political Economy* 102, no.1:403-36.
- [35] Eden, Benjamin. 1994. "The Adjustment of Prices to Monetary Shocks When Trade Is Uncertain and Sequential." *Journal of Political Economy* 102, no.3:493-509.
- [36] Eden, Benjamin. 2001. "Inflation and Price Adjustment: An Analysis of Microdata." *Review of Economic Dynamics* 4, no.3:607-636.
- [37] Fabiani, Silvia, Martine Druant, Ignacio Hernando, Claudia Kwapil, Bettina Landau, Claire Loupias, Fernando Martins, Thomas Mathä, Roberto Sabbatini, Harald Stahl, and Ad Stokman. 2006. "What Firms' Surveys Tell Us about Price-Setting Behavior in the Euro Area." *International Journal of Central Banking*, September:3-48.
- [38] Gagnon, Etienne. 2009. "Price Setting during Low and High Inflation: Evidence from Mexico." *Quarterly Journal of Economics* 124, no.4:1221-1263.
- [39] Golosov, Mikhail and Robert E. Lucas Jr. 2007. "Menu Costs and Phillips Curves." *Journal of Political Economy*, 115:171-199.
- [40] Gopinath, Gita and Oleg Itskhoki. 2010. "Frequency of Price Adjustment and Pass-Through." *Quarterly Journal of Economics* 125, no.2:675-727.
- [41] Gopinath, Gita and Oleg Itskhoki. 2011. "In Search of Real Rigidities." NBER Chapters, *NBER Macroeconomics Annual 2010* 25:261-309.
- [42] Head, Allen, Lucy Qian Liu, Guido Menzies, and Randall Wright. (forthcoming). "Sticky Prices: a New Monetarist Approach." *Journal of the European Economic Association*.
- [43] Kara, Engin. 2011. "Understand and Modelling Reset Price Inflation." Discussion Paper 11.623. University of Bristol.
- [44] Karadi, Peter and Adam Reiff. 2010. "Inflation Asymmetry, Menu Costs and Aggregation Bias – A Further Case for State Dependent Pricing." Working Papers 20103, Magyar Nemzeti Bank.

- [45] Kashyap, Anil K. 1995. "Sticky Prices: New Evidence from Retail Catalogs." *Quarterly Journal of Economics* 110, no.1:245-74.
- [46] Klenow, Peter J. and Oleksiy Kryvtsov. 2008. "State-Dependent or Time-Dependent Pricing: Does It Matter for Recent U.S. Inflation?" *Quarterly Journal of Economics* 123, no.3:863-904.
- [47] Klenow, Peter J. and Benjamin A. Malin. 2011. "Microeconomic Evidence on Price-Setting." *Handbook of Monetary Economics*, Volume 3, Chapter 6, in B. M. Friedman and M. Woodford (editors), pages 231-284.
- [48] Lach, Saul and Daniel Tsiddon. 1992. "The Behavior of Prices and Inflation: An Empirical Analysis of Disaggregated Price Data." *Journal of Political Economy* 100, no.2:349-89.
- [49] Levy, Daniel, Dongwon Lee, Haipeng Chen, Robert J. Kauffman, and Mark Bergen. 2011. "Price Points and Price Rigidity." *Review of Economics and Statistics* 93, no.4:1417-1431.
- [50] Mackowiak, Bartosz and Frank Smets. 2008. "On Implications of Micro Price Data for Macro Models." Working Paper 960, European Central Bank.
- [51] Mankiw, N. Gregory and Ricardo Reis. 2002. "Sticky Information Versus Sticky Prices: A Proposal To Replace The New Keynesian Phillips Curve." *Quarterly Journal of Economics* 117, no.4:1295-1328.
- [52] Midrigan, Virgiliu. 2011. "Menu-Costs, Multi-Product Firms and Aggregate Fluctuations." *Econometrica* 79, no.4:1139-1180.
- [53] Nakamura, Emi and Jón Steinsson. 2008. "Five Facts about Prices: A Reevaluation of Menu Cost Models." *The Quarterly Journal of Economics* 123, no.4:1415-1464.
- [54] Reinsdorf, Marshall. 1994. "New Evidence on the Relation between Inflation and Price Dispersion." *American Economic Review* 84, no.3:720-731.
- [55] Rotemberg, Julio J. 2011. "Fair Pricing." *Journal of the European Economic Association* 9, no.5:952-981.
- [56] Sims, Christopher A. 2003. "Implications of Rational Inattention." *Journal of Monetary Economics* 50, no.3:665-690.

- [57] Sheshinski, Eytan and Yoram Weiss. 1977. "Inflation and Costs of Price Adjustment." *Review of Economic Studies* 44, no.2:287-303.
- [58] Smets, Frank and Rafael Wouters, 2007. "Shocks and Frictions in US Business Cycles: A Bayesian DSGE Approach," *American Economic Review* 97, no.3:586-606.
- [59] Taylor, John B. 1980. "Aggregate Dynamics and Staggered Contracts." *Journal of Political Economy* 88, no.1:1-23.
- [60] Varian, Hal R. 1980. "A Model of Sales," *American Economic Review* 70, no.4:651-659.
- [61] Woodford, Michael. 2008. "Inattention as a Source of Randomized Discrete Adjustment." mimeo, Columbia University.
- [62] Woodford, Michael. 2009. "Information-Constrained State-Dependent Pricing." *Journal of Monetary Economics* 56, (Supplement):S100-S124.
- [63] Wulfsberg, Fredrik. 2009. "Price Adjustments and Inflation - Evidence from Norwegian Consumer Price Data 1975-2004." Working Paper 2009/11, Norges Bank.

Appendix A. Data Description

The datasets used in this paper have been described in earlier work, so we shall concentrate on the features that are most relevant for our analysis.

Mexican CPI Database

Gagnon (2009) constructed the Mexican micro CPI dataset for the period January 1994 to December 2004 using monthly price and item substitution lists published by the Bank of Mexico. We extended his sample period back to July 1993 and forward to December 2010. Price lists were not available electronically for 1993; the observations were manually coded by a data entry firm using scans of the original documents made by Mexico’s Archivo General de la Nación.

The dataset excludes product categories whose prices are regulated (e.g., taxi fares, phone services, gasoline, and tuition fees) or reported as a sectoral index (e.g., housing, utilities, and insurance). The sample covers 54 percent of Mexican consumer price expenditures prior to the basket update of July 2002, and about 61 percent thereafter. The number of usable monthly observations ranges from 21,000 in 1993 to 57,000 in 2010. Prices are inclusive of sales as long as these sales are conditional on the purchase of a single item. There is no flag in the dataset indicating that an item is on sale but the application of filters to remove V-shaped price patterns suggests that sales are less prominent than in the U.S. CPI.

U.S. CPI Database

The Bureau of Labor Statistics (BLS) makes available most of the micro data behind the official U.S. CPI on a restricted-access basis through its CPI-Research Database. This database excludes housing rents, whose index is computed separately due to differences in sampling and treatment. With the exceptions of food, energy, and a few additional product categories, item prices are collected every other month in all metropolitan areas but the largest three (New York City, Los Angeles, and Chicago), where price collection takes place monthly for all items. The database starts in January 1988 and we extracted data through December 2009. We restrict the sample to the largest three metropolitan areas, leaving us with between 12,000 and 19,000 observations per month. The individual observations are weighted using the same procedure and product category weights as BKM.²¹ We classified the product categories according to the United Nations *Classification of Individual Consumption According to Purpose* (COICOP) in order to compute statistics for special groups of products. For additional details on this dataset, see the BLS Handbook of Methods, Bils and Klenow (2004), Klenow and Kryvtsov (2008), and Nakamura and Steinsson (2008).

SymphonyIRI Group Scanner Database

²¹We thank them for sharing these weights with us.

The IRI Marketing dataset includes scanner data from U.S. grocery stores and drugstores. Its content is detailed in Bronnenberg, Kruger, and Mela (2008). An observation corresponds to a specific item sold by a given store in a particular week. Available information includes total revenue from the sale of the item and the number of units sold. As is customary with scanner data, the unit price is obtained by dividing total revenue by the quantity sold. The number of usable observations in the dataset is enormous at about 300 billion per year.

The dataset has several appealing features. First, observations are collected frequently. Second, the sample covers a relatively long time span, January 2001 to December 2007, that allows us to look at price dynamics. Third, information is available for 31 food and personal care product categories, such as beer, household cleaners, and milk. Fourth, the geographical coverage—50 U.S. markets—is more extensive than that of other scanner datasets used in the literature, and includes several retailers within each market. To study pricing decisions in competitive environments, we restrict the sample to Boston, Chicago, Houston, Los Angeles, New York, Philadelphia, San Diego, and Washington D.C.. These markets have between 30 and 97 stores. One limitation of the dataset is that it does not contain information about costs.

We applied a number of filters to the data to make them suitable for our analysis. First, we censored fractional price observations. For various reasons (use of membership cards, price changes during the week, etc.), dividing total revenue by the number of units sold occasionally yields a price with fractional cents (e.g., \$3.7485). For New York City, fractional prices represent less than 0.2 percent of posted prices, and a negligible proportion of reference prices; censoring fractional prices is thus mostly inconsequential for our results. Second, in some applications, we filtered out temporary sales, which we define as a price drop that is offset within two weeks by a price increase of equal magnitude. Third, we considered a slight variant of the reference price filter of Eichenbaum *et al.* (2011). Specifically, the reference price of a given item in week t corresponds to the mode of the posted price over a 13-week centered window. Fourth, we converted weekly statistics to a monthly frequency by selecting weekly observations encompassing the 15th day of every month. Fifth, we require a minimum of 10 observations (stores) in constructing the average price of local competitors, $\bar{p}_{-i,t}$. Finally, an item must be present in the sample at least 24 months to be included in the analysis.

Appendix B. Adjustment along the Intensive Margin

The frequency of price change is approximately equal to the intensive margin and, provided real rigidities are not too strong, offers a lower bound on the index of macroeconomic flexibility. For the revelation principle to apply, only price adjustments coinciding with a reoptimization should be comprised in the intensive margin. For this reason, we report alternative measures of the average frequency that exclude sales and nonreference prices changes. These alternative measures provide a range of estimates for the intensive margin under widely used assumptions regarding the set of price adjustments coinciding with a reoptimization.

The top of table 1 reports the average frequency of price changes in the CPI excluding shelter in the three largest U.S. metropolitan areas. According to Klenow and Kryvtsov (2008), items representing 36.2 percent of consumer expenditures experience a price adjustment every month. This statistic suggests that, absent strong real rigidities, nominal shocks are initially passed through rapidly to individual reset prices even if no adjustment along the extensive margin were to take place. The average frequency of price changes slides to a still-elevated 29.9 percent when one excludes price changes flagged by the BLS as related to sales and promotions. Filtering out nonreference price changes is more consequential. Klenow and Malin (2011) find an average frequency of 14.6 percent when they define the reference price as the modal price over a 13-month window centered on the current month, implying that reference prices are considerably stickier than regular prices. Whether one should ignore all nonreference price changes is debatable, however. Klenow and Malin (2011) show that price changes exhibit considerable novelty: Every month, the price of a quarter of items in the U.S. CPI is adjusted to a level not seen over the previous 12 months. Also, some frequently occurring prices could be chosen because consumers find them more attractive than others (e.g., \$9.99 versus \$10.47), in which case some of the stickiness in reference prices could be due to features of consumer demand rather than rigidity in pricing strategy.²² Finally, Eichenbaum *et al.* (2011) show that replacement costs also exhibit reference behavior. It is thus plausible that reference price behavior reflects to some degree a similar feature of individual reset prices.

In the bottom of table 1, we present related statistics for the IRI Marketing database. Although its product coverage is restricted to food and personal care product, the frequency statistics are similar to the U.S. CPI. The monthly average frequency is 37.2 percent for posted prices and 25.6 percent after filtering out V-shaped price drops. Monthly reference prices changes, at 13.5 percent, are less frequent but, as was the case with CPI prices, scanner prices exhibit considerable novelty.

²²See Levy *et al.* (2011) for evidence that some digits are overrepresented in posted prices.

Appendix C. The Extensive Margin and Bils-Klenow-Malin Reset Price Inflation

Imputing individual reset prices between adjustment periods is a delicate task. With only price information at hand, one does not know if an item’s price change is releasing pressure generated by a single large shock or accumulated gradually from various sources. In a recent paper, Bils, Klenow, and Malin (forthcoming, henceforth “BKM”) propose a method that uses the behavior of items changing their price to infer the amount of price pressure building up for other items in the sample. The method works under specific assumptions about the data-generating process that commonly hold in models in which the timing of price changes is exogenous. It is employed to recover a time series for the common component of individual reset price inflation whose behavior is then used to assess the empirical relevance of the initial assumptions. This appendix briefly reviews this method, shows how the identification is informed by the CE decomposition, and then discusses the challenges of applying it to assess the importance of adjustment along the extensive margin.

BKM’s Identification Method

BKM estimate item i ’s individual reset price in period t as follows

$$p_{i,t}^{*BKM} = \begin{cases} p_{i,t} & \text{if } p_{i,t} \neq p_{i,t-1} \\ p_{i,t-1}^* + \pi_t^{*BKM} & \text{if } p_{i,t} = p_{i,t-1} \end{cases} . \quad (10)$$

The individual reset prices of an item whose posted price is unchanged is obtained by incrementing the previous-period imputed value by an estimate of aggregate reset price inflation, π_t^{*BKM} . This estimate corresponds to the average change in $p_{i,t}^{*BKM}$ of items whose posted price is adjusted in period t . A time series for π_t^{*BKM} is constructed by initializing individual reset prices and then recursively computing π_t^{*BKM} . The dependence of π_t^{*BKM} on the initial conditions quickly fades as price adjustments occur. Equation (10) can be alternatively written as

$$p_{i,t}^{*BKM} = \begin{cases} p_{i,t} & \text{if } p_{i,t} \neq p_{i,t-1} \\ p_{i,t-\tau} + \sum_{s=0}^{\tau-1} \pi_{t-s}^{*BKM} & \text{if } p_{i,t} = p_{i,t-1} \end{cases} ,$$

where τ is the number of periods since item i ’s last price adjustment. This data-generating process differs from that assumed in equation (1), which implies that item’s i individual reset

price evolves according to

$$p_{i,t}^* = \begin{cases} p_{i,t} & \text{if } p_{i,t} \neq p_{i,t-1} \\ p_{i,t-\tau} + \sum_{s=0}^{\tau-1} \pi_{t-s}^* + \sum_{s=0}^{\tau-1} v_{i,t-s} & \text{if } p_{i,t} = p_{i,t-1} \end{cases}. \quad (11)$$

The term $\sum_{s=0}^{\tau-1} v_{i,t-s}$ captures the accumulation of idiosyncratic shocks since the last price adjustment. Comparing the above two equations, it is apparent that BKM's method abstracts from the presence of idiosyncratic shocks. These shocks play no role in aggregate price dynamics for models in which the timing of adjustments is exogenous to the firms, such as the popular Calvo (1983) and Taylor (1980) models. As we now illustrate, abstracting from idiosyncratic shocks can create a wedge between π_t^{*BKM} and π_t^* when these shocks are present and firms adjust along the extensive margin.

BKM's Identification and the CE Decomposition: an Approximation

For ease of exposition, consider an economy that starts in a steady state with $\pi_t^{*BKM} = \pi_t^* = \bar{\pi}$ and in which actual individual reset prices evolve according to equation (11). Suppose that all individual reset prices are perturbed by a small one-time impulse Δm_t prior to price adjustment decisions in period t . Let fr_t and dp_t denote the initial response of the average frequency and size of (nonzero) price changes, respectively. As in section 3.1, we denote the variables under the counterfactual scenario of no shock using a “ $\tilde{\cdot}$ ”. The inflation innovation attributable to the shock in the initial period can be written as

$$\Delta\pi_t = fr_t dp_t - \tilde{fr}_t \tilde{dp}_t.$$

Klenow and Kryvtsov (2008) show that nearly all the variation in U.S. CPI inflation over the past two decades is attributable to movements in dp_t while movements in fr_t are relatively small and only weakly correlated with inflation. Using this observation, we approximate fr_t and \tilde{fr}_t by the average frequency, \overline{fr}_t , to get

$$\Delta\pi_t \approx \overline{fr}_t \left(dp_t - \tilde{dp}_t \right) = \overline{fr}_t \Delta\pi_t^{*BKM}.$$

The last equality uses the fact that BKM's procedure imputes any movement in the average size of nonzero price changes to a movement in aggregate reset price inflation. Finally, using equation (4) and $\mathcal{A}_t \approx \overline{fr}_t$, we obtain

$$\Delta\pi_t^{*BKM} \approx \left(1 + \frac{\mathcal{E}_t}{\mathcal{A}_t} \right) \Delta m_t. \quad (12)$$

In short, BKM’s method overestimates the innovation to reset price inflation by a factor that depends on the importance of the extensive margin relative to the intensive margin. In the absence of adjustment along the extensive margin ($\mathcal{E}_t = 0$), π_t^{*BKM} would be an unbiased estimator of π_t^* . One implication is that π_t^{*BKM} is overly volatile relative to π_t^* whenever $\mathcal{E}_t/\mathcal{A}_t > 0$. Another implication is that the extra $(\mathcal{E}_t/\mathcal{A}_t) \Delta m_t$ wrongly imputed to the individual reset price of nonadjusters in period t needs to be offset in subsequent periods by increments to π_{t+i}^{*BKM} summing up to negative $(\mathcal{E}_t/\mathcal{A}_t) \Delta m_t$. A rapid offsetting can help generate uncorrelated or negatively persistent measured aggregate reset price inflation, as found by BKM and Gopinath and Itskhoki (2011). Figure 10 illustrates these effects in a baseline menu-cost model à la Golosov and Lucas (2007) in which $\mathcal{E}_t/\mathcal{A}_t$ is about 2.²³ Upon impact of a 1-percent shock to individual reset prices, the BKM procedure imputes a change in individual reset prices of nonadjusters of about 3 percent. The procedure quickly corrects this overestimation in subsequent periods as firms responding to the shock with a delay release less price pressure than initially imputed.

We stress that the bias in BKM’s method is not due to the extensive margin in itself but rather to the *joint* presence of idiosyncratic shocks and the asymmetric effect of the shock on the probability of price change of items with positive and negative deviations.²⁴ A positive aggregate shock triggers the release of price pressure due to idiosyncratic factors through the selection effect, but BKM’s procedure is not designed to disentangle that pressure from that accruing to the common component of individual reset prices.

BKM are well aware that their identifying assumptions do not hold for general data-generating processes. Indeed, their objective is precisely to test the empirical relevance of their assumptions by studying the behavior of reset price inflation series calculated on the micro data. In their 2009 NBER working paper, they pursue this objective notably by applying their method to series generated from baseline Calvo and menu-cost models calibrated to match CPI inflation dynamics. They then compare the predicted reset price

²³The model assumes a symmetric Ss band, a process for individual reset prices as in equation (11), and normally distributed idiosyncratic shocks. Aggregate reset price inflation is set to the average monthly U.S. CPI inflation excluding shelter from 1988 to 2007. The width of the Ss band and the variance of idiosyncratic innovations are calibrated to match an average frequency and average absolute magnitude of nonzero price changes of 25 percent and 10 percent, respectively.

²⁴In particular, BKM’s procedure is consistent when the data are generated from the Caplin and Spulber (1987) model for which all price adjustments occur along the extensive margin through the selection effect. That model has no idiosyncratic shocks, so there is no confusion that price adjustments reflect solely price pressure attributable to aggregate shocks. The method is also consistent when the data are generated from a Calvo model with idiosyncratic shocks for which the exogenous probability of price changes varies in response to aggregate conditions. Although this model has no selection effect, it still has an extensive margin due to variation in the frequency of price changes. In both of these examples, the frequency of price changes is sensitive to the size of the shock. The approximation of the frequency of price changes by a constant used to derive equation (12) would not be appealing in these environments.

inflation series to that estimated on CPI micro data. The estimated series is highly volatile and exhibits either no or negative persistence. These features are most closely replicated by their baseline menu-cost model with no strategic complementarities. This model entails a major role for adjustment along the extensive margin in explaining U.S. inflation dynamics, a conclusion that echoes the findings obtained using the alternative approaches in our paper.

However, at least three factors other than the extensive margin could create spurious volatility and negative persistence in π_t^{*BKM} . As with $\mathcal{E}_t > 0$ discussed above, these factors imply that the behavior of price adjusters is not representative of that of nonadjusters. First, the method is sensitive to sample size because it leverages the behavior of a minority of price adjusters to infer the price pressure accruing to all items. Any sampling uncertainty or coding mistakes in the subset of adjusters will thus be imputed to nonadjusters. Second, sectoral shocks may be confused with aggregate shocks. BKM deal with this issue by estimating separate reset price inflation series for 64 groups of products, but we see a risk of accentuating biases due to sample size. Third, the response of individual reset prices to aggregate shocks may be asymmetric across items in ways that correlate with the frequency of price changes. For instance, Gopinath and Itskhoki (2010) show that frequent adjusters pass-through a larger share of exchange rate movements than infrequent adjusters in a sample of U.S. trade prices. Kara (2011) provides a theoretical example in which frequent adjusters are more responsive to transitory shocks than infrequent adjusters. We believe that further work on these aspects could help shed further light on the importance of adjustment along the extensive margin for U.S. inflation dynamics.

Table 1: Standard measures of the intensive margin in the U.S. CPI and the IRI Marketing database

U.S. CPI Database	Weekly frequency (percent)	Monthly frequency (percent)	Sample period
<i>Posted prices</i> ^a	n.a.	36.2	1/1988 – 1/2005
<i>Regular prices</i> ^a	n.a.	29.9	1/1988 – 1/2005
<i>Reference prices</i> ^b 13-month window	n.a.	14.6	1/1988 – 10/2009
<i>Novel prices</i> ^b	n.a.	25.0	1/1988 – 10/2009
IRI Marketing Database	Weekly frequency (percent)	Monthly frequency (percent)	Sample period
<i>Posted prices</i>	22.6	37.2	1/2001 – 12/2007
<i>Regular prices</i> ^c	18.1	25.6	1/2001 – 12/2007
<i>Reference prices</i> 13-week window	4.0	13.5	1/2001 – 12/2007
<i>Novel prices</i>	n.a.	23.8	1/2001 – 12/2007

Notes: (a) Source: Klenow and Kryvtsov (2008). Regular prices correspond to posted prices excluding sales and promotions as flagged by the BLS. (b) Source: Klenow and Malin (2011). Novel prices are defined as prices that have not been observed for at least 12 months. An item's reference price is defined as the modal price over a centered 13-month window. (c) Regular prices exclude price drops returning to their original level within 2 weeks. The reference price is defined as the modal price over a centered window.

Table 2: Lower bounds on the share of initial pass-through attributed to adjustment along the extensive margin during the late-1994 Mexican peso devaluation

Bound method	Initial pass-through ($\Delta\pi/\Delta m$, percent)	Share attributed to extensive margin (percent)
Full pass-through ($\Delta e = 50\%$)		
posted prices	84.7	70.5
unprocessed food	72.9	47.4
processed food	85.4	75.2
nonenergy industrial goods	95.9	84.8
services	57.8	84.5
Full pass-through (forecast revision)		
posted prices	30.8	18.9
unprocessed food	26.5	-44.9
processed food	31.0	31.7
nonenergy industrial goods	34.9	58.1
services	21.0	57.4
Calvo +		
posted prices	67.5	63.0
unprocessed food	60.1	36.2
processed food	83.9	74.7
nonenergy industrial goods	64.2	77.3
services	46.2	80.6

Notes: The “full pass-through” method first assumes full immediate pass-through of a 50% devaluation to individual reset price based on a total import content of consumption equal to 10.9%, as estimated by Burstein *et al.* (2005). It then assumes that individual reset prices rose as much as the revision to the mean inflation forecast for the calendar year 1995 observed in a Bank of Mexico survey at the turn of 1995. The “Calvo+” method assumes no real rigidities and the random selection of items whose price adjustment is triggered by the shock.

Table 3: Lower bounds on the share of initial pass-through attributed to adjustment along the extensive margin during the January 2001 and April 1995 VAT hikes

	Initial pass-through ($\Delta\pi/\Delta m$, percent)	Share attributed to extensive margin (percent)
January 2010 hike		
<i>Full pass – through</i>		
posted prices	72.3	75.2
nonenergy industrial goods	83.6	75.3
services	34.8	66.2
<i>Calvo +</i>		
posted prices	266.9	93.3
nonenergy industrial goods	104.0	80.1
services	–38.8	130.3
April 1995 hike		
<i>Full pass – through</i>		
posted prices	62.8	23.5
nonenergy industrial goods	67.8	15.0
services	41.3	24.7
<i>Calvo+</i>		
posted prices	–249.1	119.3
nonenergy industrial goods	134.4	57.1
services	–356.1	108.7

Notes: The “full pass-through” method full immediate pass-through of the VAT hike to individual reset prices of taxable items. The “Calvo+” method assumes no real rigidities and the random selection of items whose price adjustment is triggered by the shock. Only taxable items were used in the computation of the statistics.

Table 4: Probability of Price Adjustment

		New York City	Los Angeles	Boston
		Salty snacks	Carbonated beverages	Frozen dinner entrees
		(1)	(2)	(3)
Regressor	Coef.			
$\hat{x}_{i,t}^{\text{neg}}$	β_1^{neg}	-1.220 (0.029)	-0.979 (0.018)	-0.891 (0.053)
$\hat{x}_{i,t}^{\text{pos}}$	β_1^{pos}	0.665 (0.035)	0.574 (0.015)	0.495 (0.042)
R^2		0.11	0.06	0.07
N		1,056,906	938,349	396,471

Notes: Fixed effect (store-UPC) linear probability regression model for the monthly change in reference prices across different categories and markets:

$$I_{(\Delta p_{i,t} \neq 0)} = \beta_{i,0} + \beta_1^{\text{neg}} \hat{x}_{i,t}^{\text{neg}} + \beta_1^{\text{pos}} \hat{x}_{i,t}^{\text{pos}} + Z'_{i,t} \Gamma + \varepsilon_{i,t},$$

where $I_{(\Delta p_{i,t} \neq 0)}$ is an indicator variable that a reference price change has occurred, $\hat{x}_{i,t}^{\text{neg}}$ equals $\hat{x}_{i,t}$ if $\hat{x}_{i,t} < 0$ and zero otherwise (with $\hat{x}_{i,t}^{\text{pos}}$ similarly defined for positive deviations), and $Z_{i,t}$ is a vector of control variables that includes monthly dummies, the age of the price, and a measure of store size (total yearly revenues). Standard errors (in parentheses) are corrected for heteroskedasticity and clustered at the store level. N is the number of monthly observations from January 2001 to December 2007.

Table 5: Probability of a Price Adjustment by Spell Duration

		New York City	Los Angeles	Boston
		Salty	Carbonated	Frozen dinner
		snacks	beverages	entrees
		(4)	(5)	(6)
Regressor	Coef.			
$\hat{x}_{i,t}^{\text{neg}}$	β_1^{neg}	-1.263 (0.030)	-1.084 (0.021)	-0.928 (0.062)
$\hat{x}_{i,t}^{\text{pos}}$	β_1^{pos}	0.698 (0.038)	0.586 (0.019)	0.576 (0.050)
$I_{(4 < D \leq 8)} \hat{x}_{i,t}^{\text{neg}}$	β_2^{neg}	0.217 (0.025)	0.180 (0.023)	0.154 (0.092)
$I_{(4 < D \leq 8)} \hat{x}_{i,t}^{\text{pos}}$	β_2^{pos}	-0.008 (0.018)	-0.031 (0.023)	-0.020 (0.045)
$I_{(8 < D \leq 12)} \hat{x}_{i,t}^{\text{neg}}$	β_3^{neg}	0.049 (0.047)	0.220 (0.022)	0.112 (0.116)
$I_{(8 < D \leq 12)} \hat{x}_{i,t}^{\text{pos}}$	β_3^{pos}	-0.014 (0.023)	0.068 (0.035)	-0.155 (0.067)
$I_{(D > 12)} \hat{x}_{i,t}^{\text{neg}}$	β_4^{neg}	0.160 (0.024)	0.337 (0.023)	-0.003 (0.088)
$I_{(D > 12)} \hat{x}_{i,t}^{\text{pos}}$	β_4^{pos}	-0.160 (0.024)	-0.061 (0.024)	-0.203 (0.048)
R^2		0.12	0.06	0.06
N		1,056,906	938,349	396,471

Notes: Fixed effect (store-UPC) linear probability regression model for the monthly change in reference prices across different categories and markets:

$$I_{(\Delta p_{i,t} \neq 0)} = \beta_{i,0} + \beta_1^{\text{neg}} \hat{x}_{i,t}^{\text{neg}} + \beta_1^{\text{pos}} \hat{x}_{i,t}^{\text{pos}} + \sum_{d=2}^4 \beta_d^{\text{neg}} I_{(D_{i,t} \in \Upsilon_d)} \hat{x}_{i,t}^{\text{neg}} + \sum_{d=2}^4 \beta_d^{\text{pos}} I_{(D_{i,t} \in \Upsilon_d)} \hat{x}_{i,t}^{\text{pos}} + Z'_{i,t} \Gamma + \varepsilon_{i,t},$$

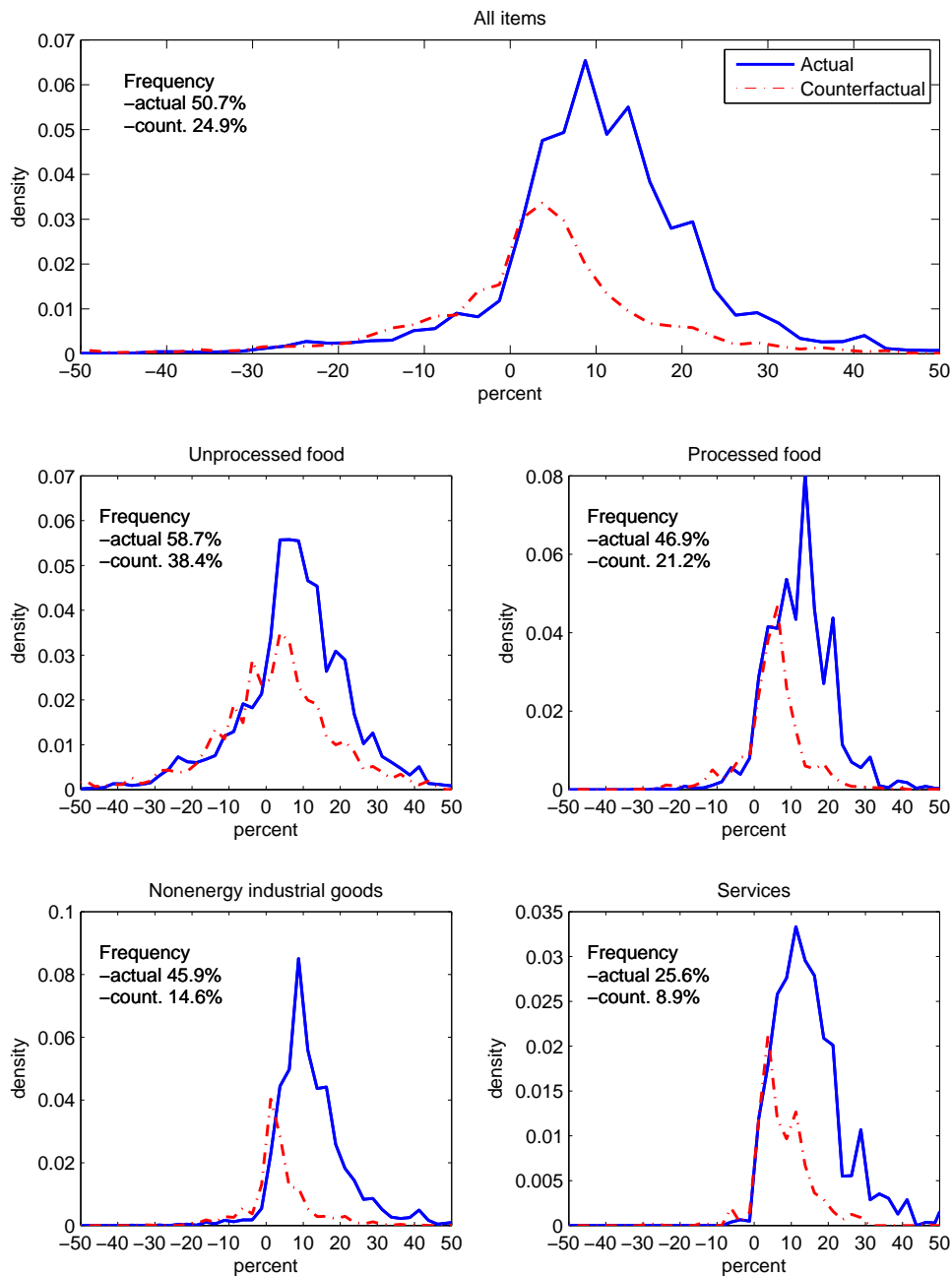
where $I_{(\Delta p_{i,t} \neq 0)}$, $\hat{x}_{i,t}^{\text{neg}}$, and $\hat{x}_{i,t}^{\text{pos}}$ have been defined in Table 4. $I_{(D_{i,t} \in \Upsilon_d)}$ is an indicator variable that the duration of the price spell $D_{i,t}$ belongs to age group Υ_d , where the age groups considered are 4 to 8 months, 9 to 12 months and more than 12 months. $Z_{i,t}$ is a vector of control variables that includes monthly dummies and a measure of store size (total yearly revenues). Standard errors (in parentheses) are corrected for heteroskedasticity and clustered at the store level. N is the number of monthly observations from January 2001 to December 2007.

Table 6: Index of Macroeconomic Flexibility

	\mathcal{A}_t	\mathcal{E}_t	F_t^{macro}	
			$a = 0$	$a = 0.6$
<i>Posted Prices</i>	0.27	0.10	0.37	0.19
<i>Regular Prices</i>	0.18	0.08	0.25	0.12
<i>Reference Prices</i>	0.09	0.04	0.13	0.06

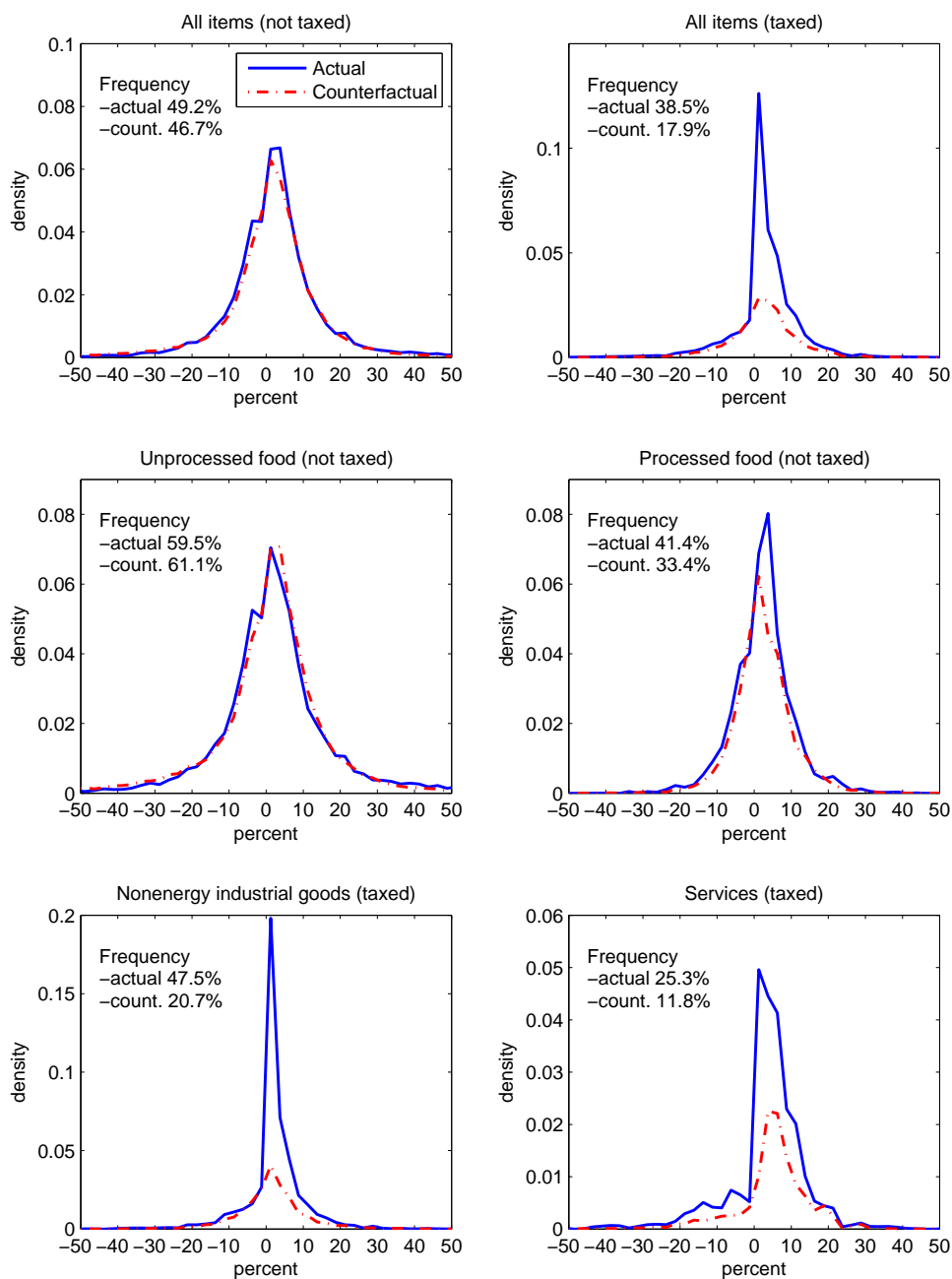
Notes: This table reports estimates of the intensive and the extensive margins based on equation 7 for the IRI Marketing dataset. We use deviations from the average price of local competitors to proxy for deviations from individual reset prices and to estimate a nonparametric adjustment hazard function. The index of macroeconomic flexibility is computed given no real rigidities ($a = 0$) and moderate real rigidities ($a = 0.6$)

Figure 1: Initial impact of the Mexican peso devaluation on the distribution of price changes



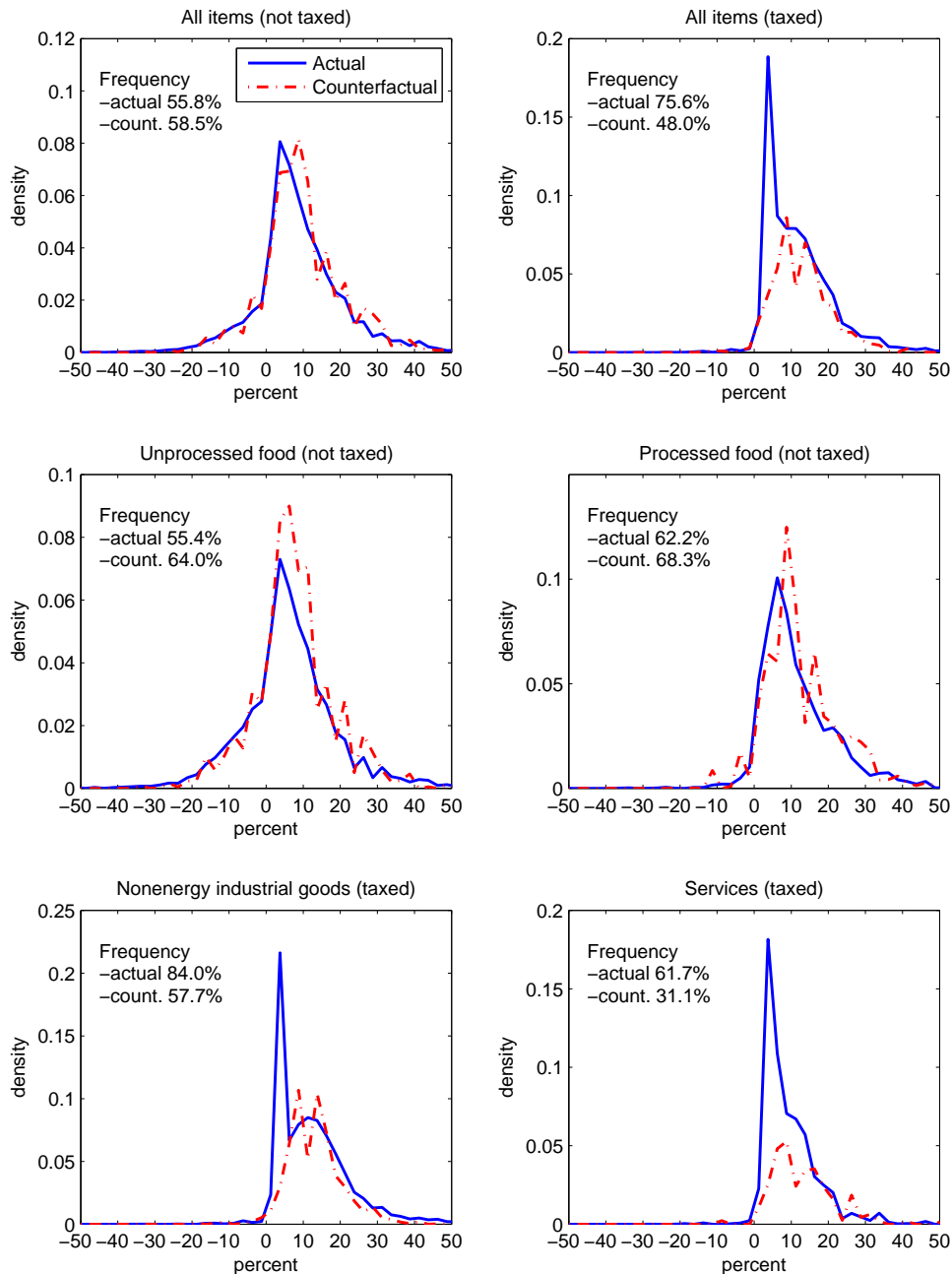
Notes: This figure shows the distribution of nonzero price changes in the Mexican CPI observed in January 1995 (the “actual” distribution) and in January 1994 (the “counterfactual” distribution) for special groups of products. Observations are grouped into bins of 2.5 percentage points and weighted by their relative importance in the CPI. The inserts in the panels report the monthly frequency of price changes.

Figure 2: Initial impact of the January 2010 1-percent hike in the Mexican VAT on the distribution of price changes



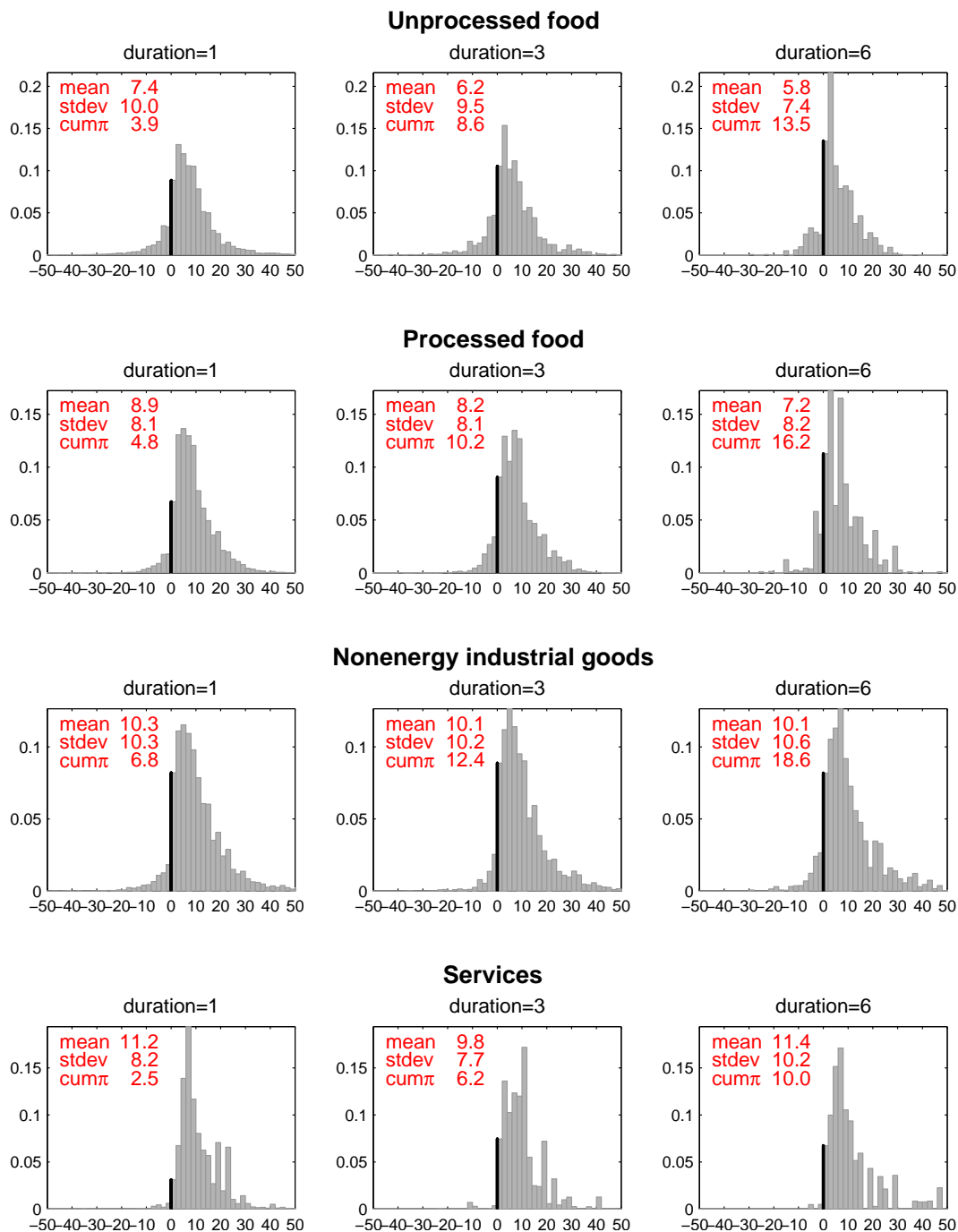
Notes: This figure shows the distribution of nonzero price changes in the Mexican CPI observed in January 2010 (the “actual” distribution) and an average of distributions observed in January from 2003 to 2007 (the “counterfactual” distribution) for special groups of products. Observations are grouped into bins of 2.5 percentage points and weighted by their relative importance in the CPI. Inserts in the panels report the monthly frequency of price changes.

Figure 3: Initial impact of the April 1995 5-percent hike in the Mexican VAT on the distribution of price changes



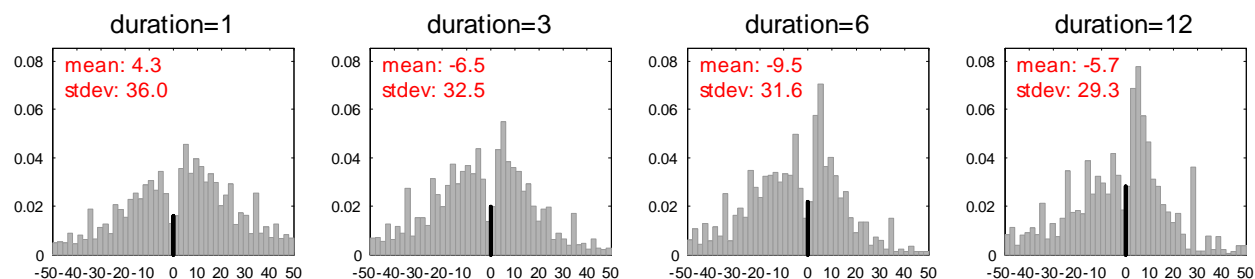
Notes: This figure shows the distribution of nonzero price changes in the Mexican CPI observed in April 1995 in regions subject to the VAT hike (the “actual” distribution) and in regions not subject to the VAT hike (the “counterfactual” distribution) for special groups of products. Observations are grouped into bins of 2.5 percentage points and weighted by their relative importance in the CPI. Inserts in the panels report the monthly frequency of price changes.

Figure 4: Distribution of nonzero price changes in the Mexican CPI conditional on a price change in April 1995

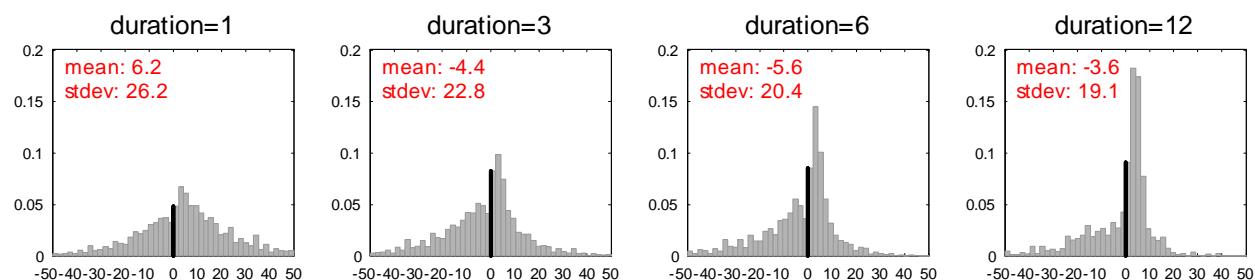


Notes: This figure shows the distributions of first nonzero price changes in the Mexican CPI conditional on a nonzero price change in April 1995 and the duration (in months). The upper-left corner of each panel reports the mean (in percent), its standard deviation (in percentage points), and the cumulated inflation in the special group since April 1995 (in percent).

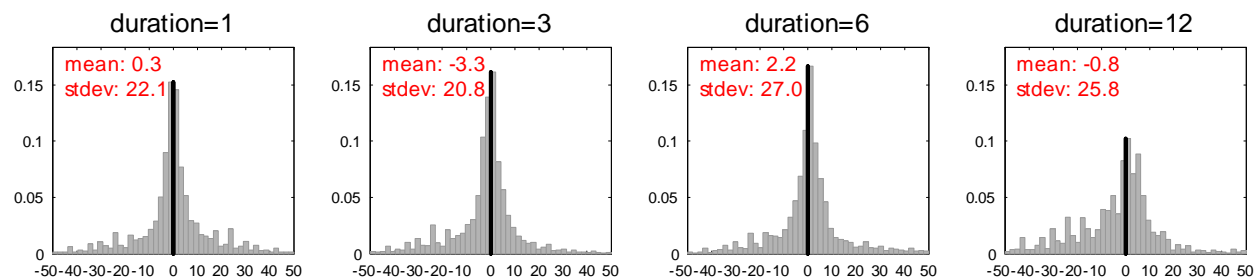
Unprocessed food



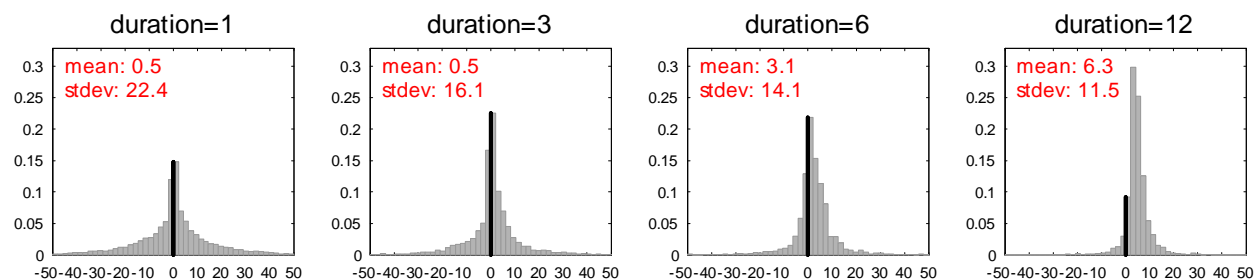
Processed food



Nonenergy industrial goods

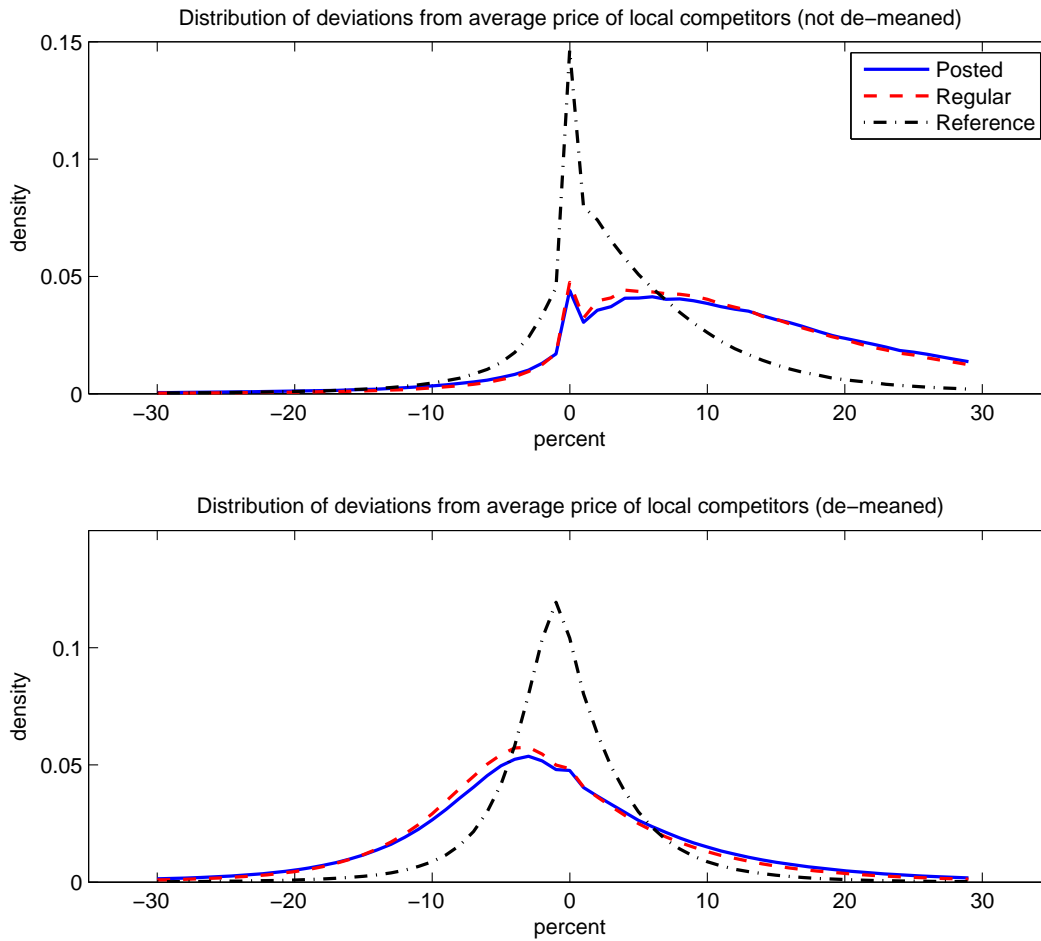


Services



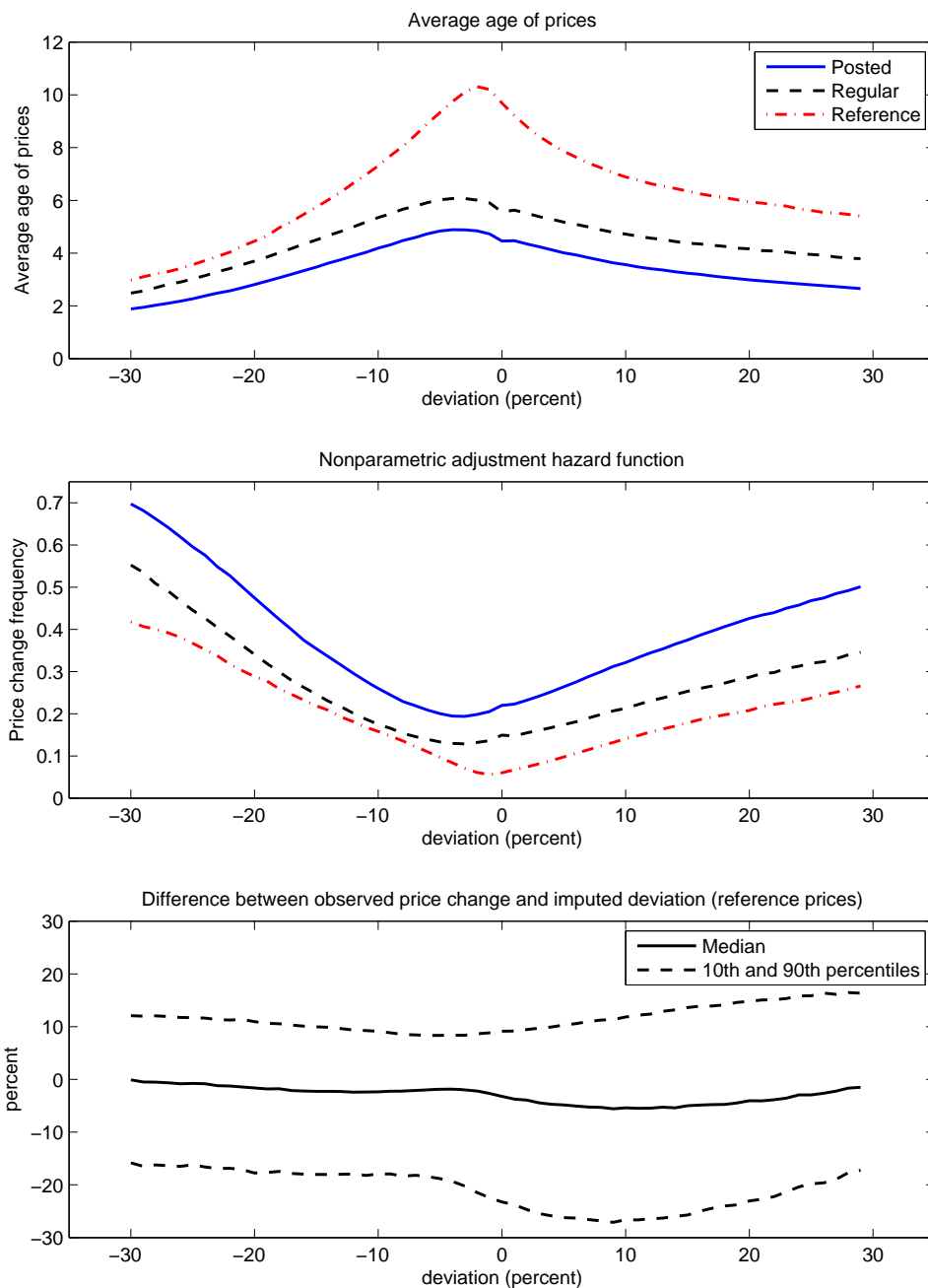
Notes: This figure shows the distribution of nonzero posted price changes in the U.S. CPI conditional on the duration (in months) since the last price change. The sample period is January 1988 to August 2010.

Figure 6: Deviation from the average posted price of competitors and individual price adjustments



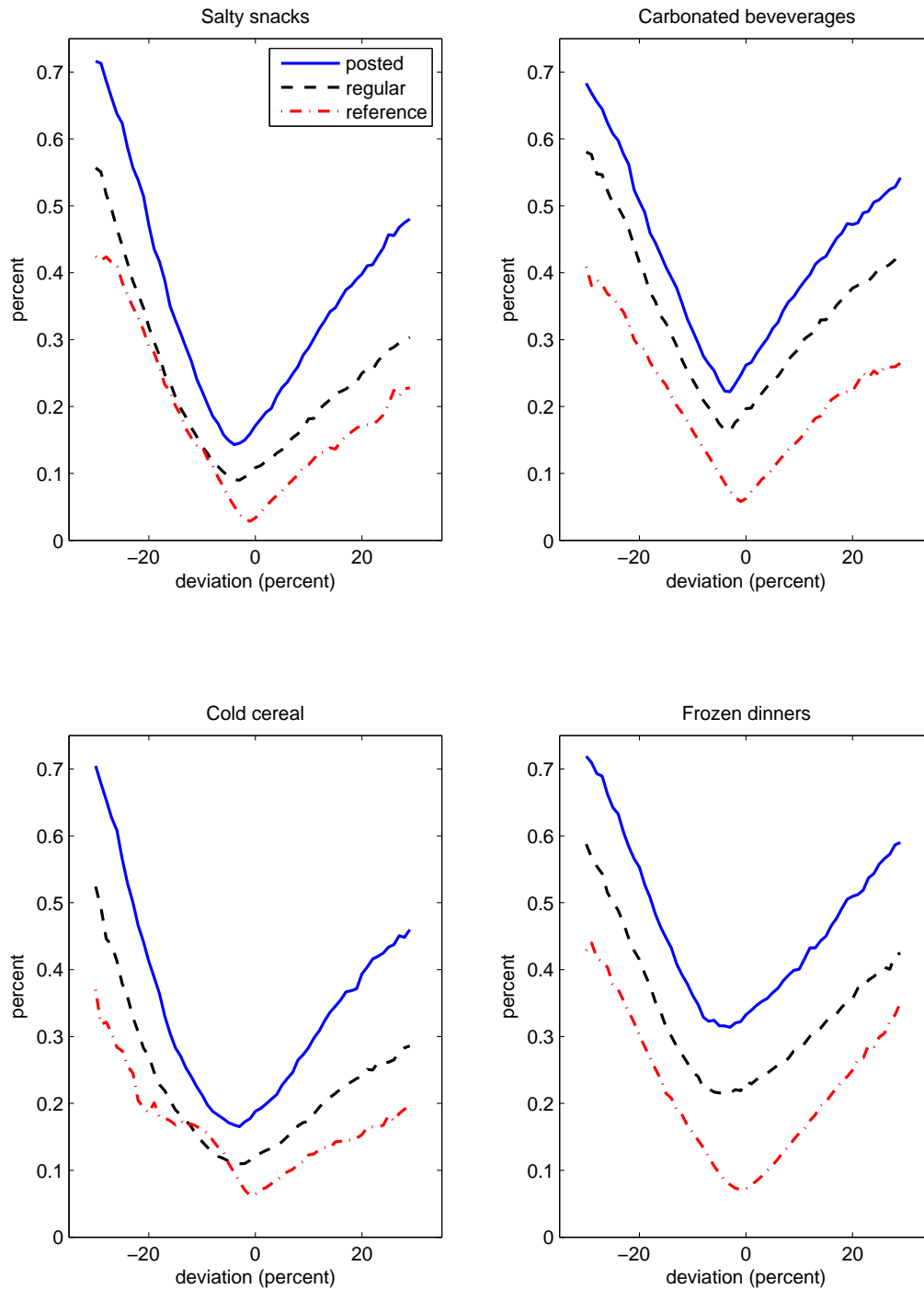
Notes: The upper and lower panels show the distribution of deviations from the average price of local competitors, computed at the UPC-market level in the IRI Marketing dataset, before and after removing item fixed effects to account for permanent differences in the level of prices across stores.

Figure 7: Deviation from the average reference price of competitors and individual price adjustments



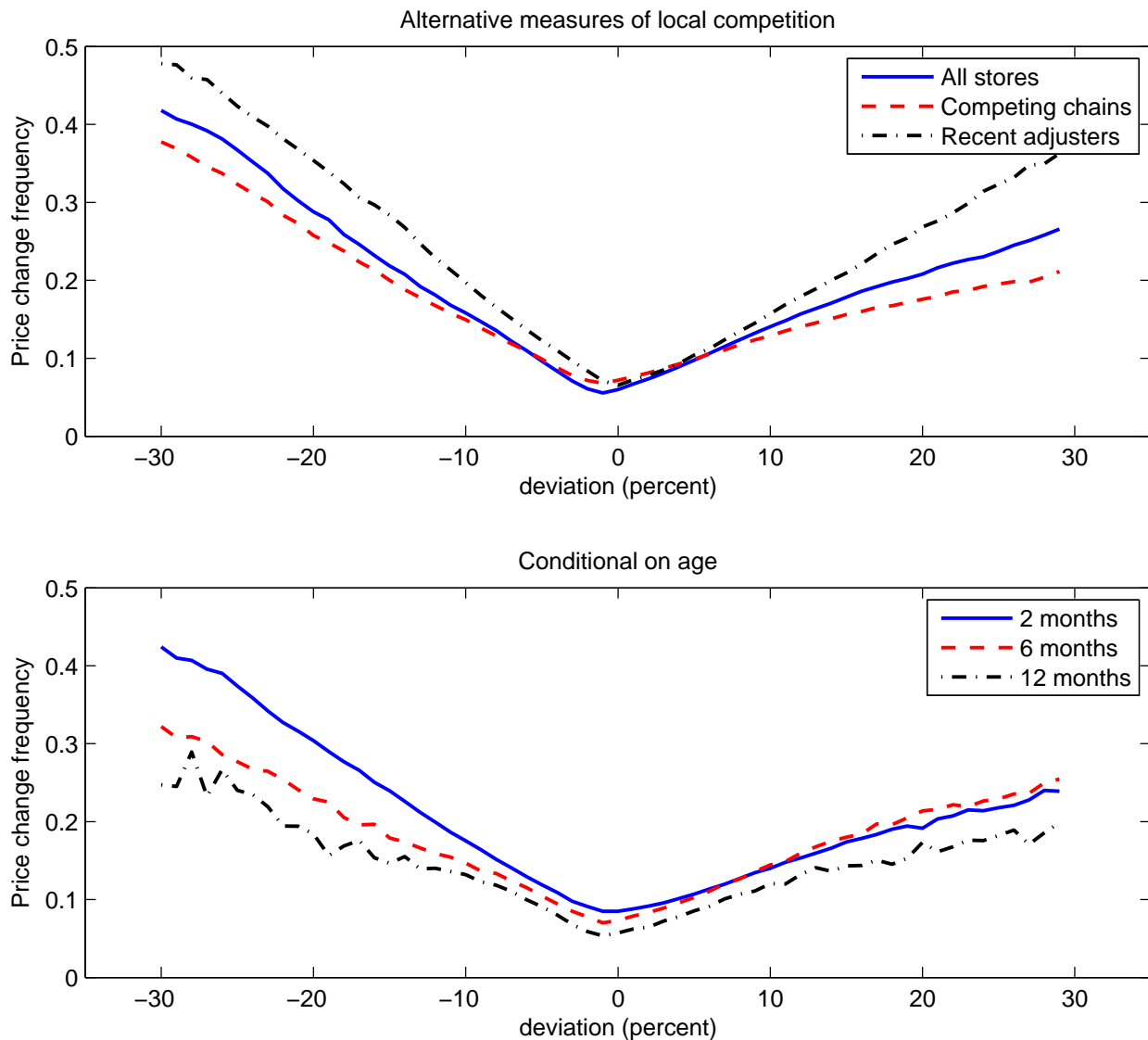
Notes: The upper panel shows the average age of monthly posted, regular, and reference prices in the IRI Marketing dataset conditional on the (demeaned) deviation from the corresponding average price of local competitors. The middle panel shows the fraction of items experiencing a price change during the month conditional on the deviation. The lower panel shows the median difference between the observed price change ($\Delta p_{i,t}$) and the imputed price pressure ($-\tilde{x}_{i,t}$), along with the 10th and 90th percentiles differences.

Figure 8: Nonparametric adjustment hazard function for four product categories



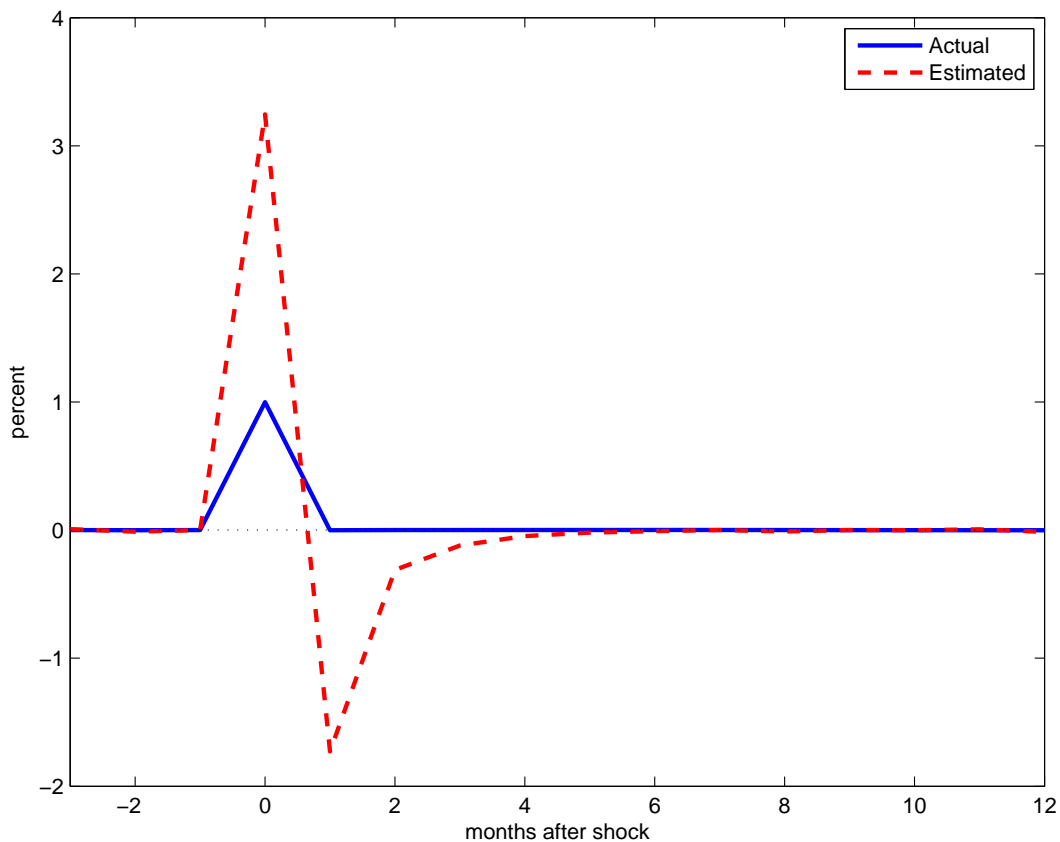
Notes: The figure shows the monthly probability of observing a change in the reference price conditional on the (demeaned) deviation from the average reference price of local competitors for four product categories in the IRI Marketing dataset.

Figure 9: Nonparametric adjustment hazard conditional on age and alternative measures of local competition



Notes: The upper panel shows the probability of a reference price change conditional on alternative measures of the (demeaned) deviation from the prices of local competitors. The measures use either all other stores (“All stores”), stores belonging to competing chains (“Competing chains”), or retailers that have adjusted their price over the current or previous six months (“Recent adjusters”). The lower panel shows the probability of a reference price change as a function of the deviation from the average price of competitors, conditional on the duration since the last price change. The data source is the IRI Marketing dataset .

Figure 10: Estimated aggregate reset price inflation using BKM's methodology in response to a 1-percent shock to actual aggregate reset price inflation (menu-cost model)



Notes: This figure applies BKM's methodology for identifying aggregate reset price inflation to the study of a 1-percent jump in the level of individual reset prices in a baseline menu-cost model. The model assumes a symmetric Ss band, a process for individual reset prices as in equation (11), and normally distributed idiosyncratic shocks. The model is calibrated to match an average frequency of price changes of 25 percent and an average size of price changes of 10 percent.