

NBER WORKING PAPER SERIES

SUBSIDIZED CONTRACEPTION, FERTILITY, AND SEXUAL BEHAVIOR

Melissa S. Kearney  
Phillip B. Levine

Working Paper 13045  
<http://www.nber.org/papers/w13045>

NATIONAL BUREAU OF ECONOMIC RESEARCH  
1050 Massachusetts Avenue  
Cambridge, MA 02138  
April 2007

The authors thank Adam Sonfield, Ted Joyce, and seminar participants at the University of Maryland, the University of Connecticut, the University of Virginia, the University of Chicago, Suffolk University, George Washington University, the Rand Corporation, The Brookings Institution, and the 2006 APPAM meetings in Madison, WI for helpful comments. We also thank Stanley Henshaw, Kosali Simon, Adam Sonfield, and Christopher Rogers for their assistance in obtaining some of the data used in our analysis. Rebecca Vichniac and Daniel Theisen provided outstanding research assistance. Any views expressed are those of the authors alone. The views expressed herein are those of the author(s) and do not necessarily reflect the views of the National Bureau of Economic Research.

© 2007 by Melissa S. Kearney and Phillip B. Levine. All rights reserved. Short sections of text, not to exceed two paragraphs, may be quoted without explicit permission provided that full credit, including © notice, is given to the source.

Subsidized Contraception, Fertility, and Sexual Behavior  
Melissa S. Kearney and Phillip B. Levine  
NBER Working Paper No. 13045  
April 2007  
JEL No. I18,J13

**ABSTRACT**

This paper examines the impact of recent state-level Medicaid policy changes that expanded eligibility for family planning services to higher income women and to Medicaid clients whose benefits would expire otherwise. We begin by establishing that the income-based policy change led to a substantial increase in the number of program recipients. We then examine Vital Statistics birth data from 1990 to 2003 and determine that it also reduced overall births to non-teens by about two percent and to teens by over four percent. Our estimates suggest a nearly nine percent reduction in births to women age 20-44 made eligible by the policy change. We supplement our state-level analysis with an investigation of individual-level data from the 1988, 1995, and 2002 National Surveys of Family Growth (NSFG) to examine the impact of these policies on sexual behavior and contraceptive use. Evidence from this analysis suggests that the reduction in fertility associated with raising income thresholds for eligibility was accomplished via greater use of contraception. Our calculations indicate that allowing higher income women to receive federally-funded family planning cost on the order of \$6,800 for each averted birth.

Melissa S. Kearney  
Department of Economics  
University of Maryland  
3105 Tydings Hall  
College Park, MD 20742  
and NBER  
kearney@econ.umd.edu

Phillip B. Levine  
Department of Economics  
Wellesley College  
Wellesley, MA 02481  
and NBER  
plevine@wellesley.edu

## I. INTRODUCTION

Roughly one-third of all births between 1997 and 2002 in the United States were unintended by the mother based on data available from the National Center for Health Statistics (2005).<sup>1</sup> This rate skyrockets to almost three-quarters for births to teens. A popular response to such jarring statistics is to increase access to family planning services that can help provide the means necessary to reduce unintended childbearing. In fact, a 2006 public opinion poll found that 89 percent of American adults believe that people “should have more access to information about birth control options,” and 81 percent believe that “providing people with access to birth control is a good way to prevent abortions” (Wall Street Journal Online, 2006).

On its face it might seem obvious that providing contraception to women will reduce the number of unwanted pregnancies and births. Of course, behavioral responses to policy changes are rarely so straightforward. Women may choose not to take advantage of the services and many who do would have obtained contraception privately otherwise. Women may also increase their level of sexual activity, canceling out the effectiveness of any increased use of contraception. Ultimately, the impact on behavior is an empirical question.

In this paper, we provide evidence on this point by examining recent expansions of eligibility for Medicaid family planning services to women who would not otherwise be covered. Between December 1993 and March 2007, 25 states received waivers from the federal government to extend this coverage (Guttmacher Institute, 2007a). We evaluate the effectiveness of these waivers in reducing births, as well as their impact on abortions, sexual activity, and contraceptive use. Because these policies were introduced in different states at different times, we are able to employ quasi-experimental methods to identify a causal

---

<sup>1</sup> The concept and measurement of an unintended pregnancy are somewhat controversial (cf. Santelli, 2003), so this statistic should be interpreted with some caution.

connection. We implement these methods using a wide array of data sources, including Vital Statistics birth data, abortion data from the Guttmacher Institute and microdata from the 1988, 1995, and 2002 National Surveys of Family Growth (NSFG) regarding sexual activity and contraceptive use. We also confirm that these waivers increased the number of women receiving Medicaid-funded family planning services using data from the Centers for Medicaid and Medicare Services (CMS).

The results of our analysis show that one type of these waivers, those that increase income limits for eligibility, were particularly effective. We show that these policies dramatically increased the number of women receiving Medicaid-funded family planning services. We go on to demonstrate that they reduced overall births to non-teens by about two percent and to teens by over four percent. Scaling these estimates by the estimated proportion of women in a state made eligible, we find that births to newly-eligible non-teens fell by almost nine percent. Our analysis of individual-level data from the NSFG implies that the reduction in fertility associated with income-based waivers is attributable to greater contraceptive use; we find no evidence of an effect on sexual activity. Based on the cost per recipient of family planning services, we find that each birth avoided cost on the order of \$6,800.

## **II. BACKGROUND**

### *A. Literature Review*

Though advocacy groups, politicians, and much of the public appears to be optimistic about the potential to decrease rates of unwanted births and abortions by expanding access to contraception, there is very little empirical evidence to date supporting this notion. Kirby (1997 and 2001) provides two extensive reviews of the literature on the effectiveness of teen pregnancy prevention programs in the United States, focusing on experimental and quasi-experimental

analyses.<sup>2</sup> Although his 1997 review concludes that “there is remarkably little research evidence” to support the conclusion that family planning services prevent teen pregnancies, his 2001 review is somewhat more optimistic. There he reports some evidence that programs offering a large number of services, including family planning, may be effective. DiCenso, et al. (2002) provides a similar review of programs like this in a larger set of developed countries. They conclude that the types of programs “evaluated to date do not delay the initiation of sexual intercourse, improve use of birth control among young men and women, or reduce the number of pregnancies in young women.” Paton (2002) uses quasi-experimental methods to examine the impact of a policy implemented in the United Kingdom in which parental consent was required before family planning services could be provided to those under the age of 16. He finds no evidence that this restriction on family planning access had any impact on pregnancies or abortions.<sup>3</sup>

The Medicaid expansion policy that we evaluate differs from previously reviewed “pregnancy prevention” programs in that it was not limited to teenagers. It was broad-based, affecting women in multiple states and varied locales, as opposed to a single community initiative aimed at reducing pregnancy among a very specific teen population. Furthermore, the policy change is specifically about expanded access to family planning services, as opposed to a range of services including educational or job training. Finally, the waivers were directed at women who were not at the very bottom of the income distribution. On the one hand, such women may be more responsive to such interventions. On the other hand, they may be more

---

<sup>2</sup> There also have been previous studies examining the relationship between geographic measures of contraceptive access and sexual outcomes (cf. Lundberg and Plotnick, 1990; Mellor, 1998; and Averett, et al., 2002). In general, these studies differ from ours in emphasis and scope and, furthermore, the sources of identifying variation are arguably not independent of the demand for contraception.

<sup>3</sup> There is a substantial literature on the relationship between contraceptive access and fertility in developing countries (cf. Gertler and Molyneaux, 1994 and 2000, and Pritchett, 1994). The baseline fertility rates and previous exposure to contraception in many of these countries is so different from that in the U.S. that it is unreasonable to expect the results from this literature to generalize to the U.S. context.

likely to have been using contraception previously, paid for either through a private health insurance employer or out-of-pocket. Therefore, past evidence does not adequately inform the issue of the effectiveness of the Medicaid family planning expansions.

Going back further in time provides an example of expanded contraceptive access that has had a significant impact on women's fertility. Recent evidence has examined the introduction of the birth control pill in 1960 and the laws which regulated teens' access to it through the 1960s and 1970s. Bailey (2006) reports that as states relaxed restrictions on teens' ability to obtain the pill, the likelihood of experiencing a first birth by age 22 fell by 16 percent. Although this intervention is considerably different than that which we explore, it does suggest that it is possible for greater contraceptive access to reduce fertility.

To date, only one study of which we are aware (Edwards, et al., 2003, which was reported in Gold, 2004) has explored the impact of Medicaid family planning waivers directly. This study examines the impact of family planning waivers granted to six states, but it has serious methodological weaknesses. In particular, the authors estimate the number of births averted based upon the deviation from pre-waiver birth levels within each state; no control group is used to provide an idea of what would have happened to birth rates in the state had no waiver been granted. Our study corrects this methodological flaw using quasi-experimental methods to examine the impact on births, as well as examining all antecedent behavior.

### *B. Institutional Details*

Historically, the main source of public support for family planning services in the United States has been Title X of the Public Health Service Act (commonly referred to as Title X), introduced in 1970. This program is still an important source of public funds for family planning

services, but its budget has shrunk considerably in real terms over the past couple of decades.<sup>4</sup> The Medicaid system has also provided access to family planning services to its clients since 1972, but the stringent eligibility requirements to receive Medicaid meant that historically only the very low-income and only women with children had access to these services. A series of expansions in the 1980s extended eligibility for pregnancy-related care, including family planning services for 60 days post-partum.<sup>5</sup>

Between 1994 and 2001, federal Medicaid spending on family planning more than doubled, increasing from \$332 million to \$770 million. It rose from 46 percent of total federal spending on family planning to 61 percent. During this time the federal government allowed states to implement programs that offer family planning services to women whose incomes would have been too high under the existing Medicaid program or to women who otherwise would have lost Medicaid eligibility, typically post-partum.<sup>6</sup> These waivers allow states to offer the full range of family planning services it offers to its regular Medicaid recipients to additional women. Family planning services provided include a full range of contraceptive methods as well as associated examinations and laboratory tests. The federal government reimburses the state Medicaid program for 90 percent of these services and supplies. States may include other related care in their package of benefits, including treatment for STDs, but these services are reimbursed by the federal government at the regular rate, which ranges from 50 percent to 76 percent of cost

---

<sup>4</sup> Other sources of public funding are the Federal Social Services Block Grant, the federal Maternal and Child Health (MCH) Block Grant, the Temporary Assistance to Needy Families (TANF) program, and state funds, including funds from the State Children's Health Insurance Program (S-CHIP). Title X and Medicaid represent the largest share of total federal expenditures.

<sup>5</sup> In addition, adolescents have had access to family planning services through the State Children's Health Insurance Program (SCHIP), which was implemented in the late 1990s. Despite the coverage of family planning provided by SCHIP, Gold and Sonfield (2001) report that the take-up rate of this provision among adolescents is quite low, in part because of the lack of confidentiality in their provision.

<sup>6</sup> To obtain a Medicaid family planning waiver from the federal government, a state must demonstrate budget neutrality. Waiver applications typically show this by estimating the number of women who will be served, simulating the reduction in births that will result (i.e. multiplying the number served by estimates of the efficacy of contraception), and then calculating savings in areas like Medicaid payments for births and welfare payments.

(Frost, Sonfield, and Gold 2006). Seventeen states cover abortion under their Medicaid program, but federal funds may not be used for abortion and hence abortion services are not provided under these waiver provisions.

Beginning with South Carolina in 1993 and most recently with Texas at the end of 2006, 25 states have applied for and received waivers to extend eligibility for these family planning services to women who would not otherwise be covered. Table 1 lists the provisions enacted in each state along with the dates they were approved and implemented. Eight states currently have waiver policies in place to extend coverage to women who would otherwise lose the 60-day postpartum coverage of family planning services. Two other states extend coverage of family planning services for up to two years and five years for women who would lose Medicaid eligibility for any reason, not just post-partum. For the remainder of this analysis, we will collectively refer to these two types as duration waivers. An additional 17 states have been granted waivers to extend Medicaid family planning services based solely on income, regardless of categorical eligibility requirements (e.g. having a dependent child); this income threshold is set to 133 percent of the federal poverty line in one state, 185 percent of the federal poverty line in eight states, and to 200 percent of the poverty line in the remaining seven states. We refer to these 17 policies as income-based waivers. Both South Carolina's and New York's waivers extend coverage to both women losing eligibility post partum as well as women under the income threshold.

### **III. THE IMPACT OF WAIVERS ON THE NUMBER OF PUBLIC FAMILY PLANNING RECIPIENTS**

Before examining the impact of waivers on fertility outcomes, we undertake an analysis to determine whether the policy change increased the number of women who received Medicaid



family planning services. If more people are not going through the front door of the Medicaid-funded family planning provider, then it is unlikely that the program had any behavioral effects.

Although this is a useful first step in our analysis, it is important to consider two important limitations in interpreting its results: crowd out and spillover. Crowd-out refers to the possibility that some women who receive family planning services through the Medicaid program after the waiver would have used privately provided family planning services in the absence of a waiver. This merely changes the form of payment, not the services provided, and should have no behavioral impact. Spillover refers to the possibility that the introduction of a waiver increases program awareness and increases visibility of family planning clinics, which increases the take-up of services among women who were previously eligible for Medicaid family planning services but not receiving them. In this instance we might see an increase in contraceptive use and a corresponding fertility response that is greater than that due to newly-eligible women alone. Identifying the impact of the policy on overall contraceptive use in light of both crowd out and spillover issues would require data on all women's use of family planning services; unfortunately no such data are available.

Instead we make use of publicly-available data from the Medicaid Statistical Information System (MSIS) of the Centers for Medicare and Medicaid Services (CMS), the basic source of state-submitted eligibility and claims data on the Medicaid population. State-by-state tables are available for fiscal years 1999 to 2002 that contain information on the number of Medicaid beneficiaries with family planning claims. We obtained comparable data for the years 1992 and 1998 from the older national HFCA-2082 tables.<sup>7</sup> Finding an effect on service receipt from these

---

<sup>7</sup> We are grateful to Kosali Simon for sharing these data with us. These aggregated statistics are not available separately for teens. A visual inspection of these data indicated a handful of data points which clearly represent errors. States with a steady state positive value of recipients suddenly equal zero or very near zero and then revert to values comparable to the earlier values. We chose to recode as missing all states where the proportion of women

data is a necessary, but not sufficient condition in identifying any behavioral effects that may have resulted from the introduction of the waivers.

We use these data to estimate a simple Ordinary Least Squares regression of the proportion of women 15-44 receiving Medicaid family planning services on indicator variables for the implementation of income-based and duration-based waivers along with state and year fixed effects. In its simplest form, this approach is equivalent to a difference-in-difference estimator. We also add to these regressions a full set of control variables (described in more detail subsequently), holding constant other state-level policy changes and changes in demographic characteristics of state populations over time. Finally, we experiment with alternative forms of trends within states over time, including no state-specific trends as well as linear and quadratic state-specific trends.

Table 2 reports the results of this analysis. Column 1 provides the 1992 (prior to any waiver) values of the proportion of women 15-44 receiving Medicaid family planning services in states that implemented income and duration waivers by 2002 (the last year of data availability). The results indicate that 4.6 and 3.7 percent of women were receiving those services in the two respective types of states. These estimates provide a reference point to help interpret the magnitude of the results from this regression analysis.

The regression estimates reported in the remainder of the table provide clear evidence that income-based waivers increased the number of women receiving family planning services through the Medicaid program. The coefficient estimates from all three specifications indicate that the number of recipients increased tremendously, on the order of 2 to 3 times depending

---

15-44 receiving Medicaid family planning services fell below .05 percent. We also tested the sensitivity to the precise cut-off used, but found that it had negligible effects on the results. In total, we recoded 23 observations to missing.

upon specification, in response to an income-based waiver. Later in the paper we describe a procedure for estimating the percentage of the female population ages 20-44 that would be newly eligible for Medicaid family planning services under these waivers and obtain an average figure across states of 22.5 percent. Combining the results here of a 5 to 10 percentage point increase in the share of the population receiving Medicaid family planning services, this implies an average take-up rate was in the vicinity of 22 to 44 percent among those whose eligibility was affected by the policy.

Once state trends are added, duration based waivers also are estimated to have a modest impact on benefit receipt, but these estimates are not statistically significant. Given the size of the estimates, we interpret these results as ruling out large effects, but not ruling out something less than that.

We conclude from this analysis that we have at least established a basis to further examine the impact of these policy changes, and particularly income-based waivers, on behavioral outcomes. The potential for crowd-out of privately-funded contraceptive use means that the increase in the number of Medicaid family planning recipients need not have led to any change in contraceptive behavior or fertility outcomes. This is an empirical question that we address subsequently.

#### **IV. ESTIMATING THE IMPACT ON BIRTHS AND ABORTIONS**

##### *A. Econometric Methodology*

To investigate the impact of expanded eligibility for Medicaid family planning services on births and abortions, we use quasi-experimental methods exploiting the variation across states in the timing of program implementation, as detailed in Table 1. Specifically, we begin our analysis by estimating Ordinary Least Squares regression models of the form:

$$\ln Y_{st} = \beta_0 + \beta_1(\text{inc. waiver})_{st} + \beta_2(\text{dur. waiver})_{st} + \beta_3 X_{st} + \gamma_s + \gamma_t + \varepsilon_{st} \quad (1)$$

In this model,  $Y_{st}$  is defined alternatively as the birth or abortion rate in state  $s$  at time  $t$ . The regressors of interest,  $\text{inc. waiver}_{st}$  and  $\text{dur. waiver}_{st}$ , equal 1 if an income-based or duration-based Medicaid family planning waiver is implemented in state  $s$  at time  $t$  and equals 0 otherwise.<sup>8</sup> We modify this specification to include state-specific linear and quadratic time trends to control for the possibility of a spurious correlation between the introduction of waivers and trends in fertility outcomes across states. All regressions are weighted by the state population for the relevant population subgroup.<sup>9</sup>

It is also important that these regressions control for other observable state-specific factors that might have changed over time, including other relevant policy changes. During the period we focus on, these include important changes to abortion restrictions (parental notification/consent, waiting periods, and Medicaid funding of abortion), the welfare system (maximum AFDC/TANF benefit for a family of three, a welfare reform indicator, and a “family cap” indicator), and other Medicaid policies (an indicator for “S-CHIP” implementation).<sup>10</sup> In addition, a number of states introduced mandates requiring health insurance coverage of contraception. We include indicator variables representing whether or not these policies were in place in each state/year.<sup>11</sup> In addition, we include the state unemployment rate to control for differences in local labor market conditions that may affect women’s decisions/opportunity cost

---

<sup>8</sup> In the year in which the waiver was passed the regressors are equal to a fraction between (0,1) based on the number of months the waiver was in effect.

<sup>9</sup> All models are estimated both with and without weighting; results are qualitatively similar across models.

<sup>10</sup> See Levine (2004) for a description of abortion law changes. Information on welfare reform policies were obtained from three sources: (1) a technical report of the Council of Economic Advisers (1999); (2) an Urban Institute report written by Gallagher, et al. (1998); and (3) a report by Crouse (1999), prepared for the U.S. Department of Health and Human Services, which summarizes information contained in a report of the U.S. Department of Health and Human Services (1997). S-CHIP implementation dates were obtained from the CMS website <<http://www.cms.hhs.gov/schip/enrollment/fy2000.pdf>>, accessed September 2005. Data on welfare benefit levels were obtained from Council of Economic Advisers (1997) and Rowe, et al., (2004), Rowe and Russell (2004), and Rowe and Versteeg (2005).

<sup>11</sup> We are grateful to Adam Sonfield at the Guttmacher Institute for providing us with data on these policies.

regarding having children. Finally these regressions include a set of the average demographic characteristics, including the age and race composition, educational attainment, and marital status of women in the state/year.<sup>12</sup>

We estimate this equation separately for teens and for non-teens as well as for population subgroups distinguished by age, race/ethnicity, and educational attainment. Our set of “treatment states” is comprised of the seven states that implemented income-based waivers (Alabama, Arkansas, California, New Mexico, Oregon, South Carolina, and Washington) and duration-based waivers (Arizona, Delaware, Florida, Maryland, Missouri, New York, Rhode Island, and South Carolina) during our sample period.<sup>13</sup> For models including only teens, we drop observations from Alabama and New Mexico because the waiver policies in these states explicitly excluded females under the age of 19.<sup>14</sup>

### *B. Data*

We use several sources of data to estimate these models, where the different data sources are necessary to capture different components of fertility-related behavior. For births, we use Vital Statistics natality data aggregated to the state-level. These birth data are very well measured in the aggregate as well as for several population subgroups, including by state of residence, age, race/ethnicity, and educational attainment.<sup>15</sup> The Census Bureau also provides

---

<sup>12</sup> We estimated these variables using data from the outgoing rotation group files from the Current Population Survey, available from the National Bureau of Economic Research.

<sup>13</sup> Both New York and Virginia implemented their waivers in the last quarter of the final year in the sample period and are not considered treatment states for the purpose of this discussion or figures; in the regressions the waiver indicator associated with the state observation is set equal to 0.25 in the final year.

<sup>14</sup> One important consideration in quasi-experimental analyses like this is the potential for policy endogeneity (Besley and Case, 2000). In this case, one might expect that locations having greater trouble with unwanted pregnancies may be more likely to adopt more aggressive family planning policies. The bias in such an environment, however, would go in the direction of finding a positive relationship between, say, teen childbearing and family planning, not a negative one, as we are finding. Moreover, in our subsequent analysis of contraceptive use, we introduce a triple-difference identification strategy using those who are ineligible as an in-state control group. This approach should reduce the likelihood that policy endogeneity is driving our results.

<sup>15</sup> Vital Statistics data on births are also available by maternal marital status, but these data are not reliably measured due to the imputation of marital status, often based on the last names of the parents, in some states and changes in

population estimates by state/year by age, gender, and race/ethnicity, so we can combine these two sources of data to generate birth rates for these subgroups. We use data on weeks of gestation to convert the dating of births from their year of occurrence to the year of their conception.<sup>16</sup> We start with births that occur in 1990 through 2003 (the most recent year available at the time we began this study) and convert them to births that were conceived in 1990 through 2002. All other explanatory variables are merged onto these data to correspond to the year of conception.

Data on abortions come from the Guttmacher Institute. Their abortion data is obtained from surveys of abortion providers, inquiring about the number of procedures performed in the past year (or in the year before that). These data are generally recognized as the most accurate available. Abortion counts are recorded by the location of the provider, however, not the state of residence of the women having abortions. The Guttmacher Institute takes advantage of other available data from the Centers for Disease Control (CDC) to generate abortion counts by state of residence. CDC data tends to provide an undercount of the number of abortions provided,<sup>17</sup> but those data include information on the state of occurrence of the abortion and the state of residence of the woman. Guttmacher uses these data to transform their occurrence-based data to residence-based data; we use those data in our analysis.<sup>18</sup> During our sample period, they are available for 1991, 1992, 1996, 1999, and 2000. Similarly, for teen abortions Guttmacher has adopted a set of assumptions designed to create a set of estimated teen abortion rates by state of

---

the method of recording marital status during the sample period (see the 1997 Technical Appendix from the Vital Statistics of the United States: Natality). Due to this limitation, we have chosen to omit an analysis using these data.

<sup>16</sup> The weeks of gestation variable contains some missing data. For those births missing this information, we assumed that the pregnancy lasted 40 weeks, which was the modal value in these data.

<sup>17</sup> AGI abortion counts average 15 percent higher than those obtained by CDC (Alan Guttmacher Institute, 1997).

<sup>18</sup> These data have been graciously provided to us by Stanley Henshaw at AGI.

residence for the years 1992, 1996, 1999, and 2000 (Henshaw, 1997; Henshaw and Feivelson, 2000; and Guttmacher Institute, 2006); we use these data as well.

### *C. Descriptive Statistics*

Descriptive statistics regarding national trends in births and abortions can be found in published sources. For all women of childbearing age, the birth rate fell slightly in the early 1990s, but has been reasonably stable since then (Martin, 2005). The abortion rate, on the other hand, has fallen steadily over the period (Finer and Henshaw, 2003). In 1991, 26.3 abortions were performed for every 1,000 women of childbearing age (15-44), but that level fell to 21.3 in 2000 (the latest year for which Guttmacher Institute data are available). For teens, the birth rate in the U.S. has fallen dramatically since the early 1990s, starting that decade at over 60 births per 1,000 women aged 15-19 and falling to a rate of 41.6 in 2003 (Guttmacher Institute, 2006). At the same time, the teen abortion rate has fallen from 35.2 abortions per 1,000 women aged 15-19 in 1992 to a rate of 24.0 in 2000.

Note that this is the period that waivers were introduced. Of course, it would be premature to draw any conclusions from these aggregated statistics regarding whether these patterns of behavior could be attributed to the expansion of eligibility for Medicaid family planning services in particular states. We turn our attention to an econometric analysis of this question in the following section.

### *D. Results*

Before reporting the results of our full econometric analysis, we begin with Figures 1 and 2, which displays trends in birth rates for all non-teens and teens, respectively, for states that are

distinguished by their waiver status.<sup>19</sup> In Figure 1 we see that birth rates for non-teens in states with no waivers have been trending upward relative to the levels in the two types of waiver states. These differential patterns start before any waivers were introduced and highlight the importance of holding constant state trends. The observed pattern also suggests that the underlying trend is potentially best described by a quadratic functional form. There does not seem to be any dramatic decline in birth rates among non-teens in waiver states in later years relative to the non-waiver states. This does not rule out the existence of a treatment effect, but it does suggest that any such effect is unlikely to be very large at an aggregate level. Birth rates for teens (Figure 2), on the other hand, appear to have dipped in states that implemented income-based waivers in the middle of our sample period. This large decline precedes the waivers introduced in Arkansas, California, and South Carolina by a year or two and is unlikely to be attributable to the waiver directly. Again, the differential trends across states highlight the need to control for this in the econometric models that we estimate.

Table 3 reports estimates from regression models of the form of equation (1), where the dependent variable represents the log of the birth rate (top panel) and the log of the abortion rate (bottom panel). Results are presented for teens and non-teens separately for births and for teens and all women (mostly non-teens) for abortions. We report models that include no state-specific linear trends as well as linear and quadratic trends to examine the sensitivity of the results to these alternative specifications.

The results provide strong evidence that income-based family planning waivers reduce births, particularly for teens. For teens and non-teens in models without state-specific trends, births are estimated to fall by about 7.1 percent and 5.3 percent, respectively. As predicted

---

<sup>19</sup> In these figures, we have treated New York and South Carolina as income-based waiver states based on our subsequent analysis indicating that income-based waivers had a much larger impact on the number of family planning recipients than duration waivers.



earlier, including state trends reduces the size of the estimated effects to 4.7 percent and 1.7 percent. Quadratic trends have little impact on the estimates; these waivers are found to reduce births by 4.2 percent and 2.0 percent for teens and non-teens, respectively.

The results for duration waivers are less robust. The point estimates are close to zero and statistically insignificant for teens. When estimated among non-teens, all point estimates are negative, and are statistically significant for non-teens in models with no trends and linear state trends, but statistically insignificant in the model with quadratic state trends. We believe that these findings are suggestive that these waivers might have an impact on reducing fertility for non-teens, but the evidence is not sufficient to strongly support that conclusion. For the remainder of the analysis we focus more of our attention on income-based waivers.

The bottom panel of Table 3 conducts similar analyses regarding abortion rates. Because we have more data available for women 15-44 than we do for teens, we estimate models for women 15-44, rather than for non-teens, 20-44. Data limitations, described earlier, reduce the sample size of available state/year cells relative to that in the birth regressions, particularly for teens. The results of this analysis provide little evidence of an impact on abortion rates attributable to the introduction of a family planning waiver. The problem is largely about imprecision; standard errors of 10 percent or more suggest that the impact on abortion rates would have to be enormous before one could reject a null hypothesis of no effect. For women 15-44, standard errors are somewhat smaller, but they are still large enough that only very large effects could be statistically significant. The point estimates are sensitive to empirical specification and never large enough to be significant. This is not conclusive evidence that family planning waivers have little or no effect on abortions, but rather it indicates that we are unable find any evidence in support of such an effect.

Table 4 extends our analysis of the impact on birth rates by examining different population subgroups (Columns 1 and 2). All results reported here are based on specifications that include state-specific quadratic trends. When women are differentiated by their age, we see that income-based waivers have the largest impact on women 18-19 and 20-24 years of age. Estimates for other age groups are not statistically significant. By race, there are differences in point estimates for the impact of income-based waivers, but these differences are not statistically significant.

The bottom panel of the table examines births to women with different levels of educational attainment. For this analysis, we use the natural log of the number of births to women in each category because we do not have relevant population numbers to create birth rates. We also focus on women 20-44 because so many teens are still enrolled in school.<sup>20</sup> The results of this analysis indicate that the impact of income-based waivers decreases with educational attainment. Because eligibility for these waivers is negatively correlated with educational attainment, as discussed subsequently, these findings provide additional support for the notion that our results are identifying a causal impact.

The remainder of the table incorporates the fact that not all women are eligible for the benefits associated with, in particular, an income-based waiver. Duration-based waivers are also targeted at particular population subgroups (women who recently had a child and would otherwise have to give up their benefits), but identifying those subgroups is very difficult in large-scale, publicly available data. On the other hand, we are able to use microdata from the 2000 Census to approximate the fraction of a state's female population in different population

---

<sup>20</sup> We also restricted the sample period used for this analysis to 1992-2001 because a few states do not have births by educational attainment recorded in the Vital Statistics data for 1990, 1991, and 2002.

subgroups who would be made eligible by an income-based waiver.<sup>21</sup> We can use these calculated eligibility rates to scale our earlier estimates of the impact of these waivers and arrive at a simulated impact on the eligible population.<sup>22</sup> We restrict this exercise to the population of women 20-44 because it is not clear how to assign eligibility to a teen based on recorded household income.

The results of this analysis are reported in Columns 3 and 4 of Table 4. Column 3 reports the percentage of women estimated to be eligible for income-based waivers in each population subgroup (other than teens). For all non-teens, income-based waivers increased the reach of Medicaid family planning services to additional 22.5 percent of the women. This statistic ranged from 14 percent in the state of Washington to 42 percent in New Mexico. Younger women, non-white women, and less-educated women were considerably more likely to be eligible for benefits under an income-based waiver. Column 4 reports the ratio of the coefficient estimates in Column 1 to the estimated percentage made eligible by an income-based waiver in Column 3. This ratio reflects an estimate of the impact of the waiver on the eligible population. We estimate that births fell by almost nine among all eligible women and by up to 15 percent for women 20-24.

---

<sup>21</sup> The eligibility calculations are based upon the eligibility criteria described in Broaddus, et al. (2002). They begin by determining whether a woman's income and family structure would enable her to receive Medicaid in the absence of a waiver and then calculates her income-based eligibility in the presence of the waiver. Our eligibility measure is the increment to the fraction of women eligible in each waiver state. We make no pretense of thoroughly coding eligibility as a function of the complete set of state rules regarding detailed aspects of family income and asset holdings.

<sup>22</sup> An alternative approach would be to include in the regression an interaction term between estimated eligibility and the waiver indicator variable. Our first attempt to do so included this interaction term along with the waiver indicator, but without any time-series variability in our eligibility measure, the results were not estimated with a great deal of precision. Our second attempt included the interaction term without the waiver indicator. The results of that analysis provided point estimates that were virtually identical to those we report in Column 4 with t-statistics very similar to those reported in Column 2. Our view is that this exercise is doing little more than the scaling that we described and that reporting it this way is a more accurate description of our methods.

## V. ESTIMATING THE IMPACT ON SEXUAL ACTIVITY AND CONTRACEPTIVE USE

### A. Econometric Methodology

To investigate the impact of the expansion of eligibility for Medicaid family planning services on individual behavior, we apply quasi-experimental methods very similar to those described above to our sample of women from the NSFG. We specify a reduced-form relationship between the implementation of waiver policies and individual-level outcomes. Specifically, we estimate linear probability models of the following form:<sup>23</sup>

$$Y_{ist} = \phi_o + \phi_1(\text{inc. waiver})_{st} + \phi_2(\text{dur. waiver})_{st} + \gamma_s + I(1995) + I(2002) + X_{ist} + \varepsilon_{ist} \quad (2)$$

The dependent variable  $Y_{ist}$  is defined alternatively as an indicator for whether an individual engaged in sexual intercourse in the past three months, whether a sexually-active individual did not use birth control at last intercourse in the past three months, and whether an individual had unprotected sex in the past three months (the interaction of the other two binary outcome variables). We estimate these linear probability models for all women and for population subgroups. Estimated standard errors are adjusted for clustering at the state level. We weight all regressions by NSFG sampling weights.

The  $X$ -vector includes indicators for age category, race/ethnicity, marital status, category of educational attainment, and whether the respondent has children. State level variables are mainly the same as those described earlier in our analysis using Vital Statistics data.<sup>24</sup> As before, in regressions run specifically for teenagers, we drop observations from the states of Alabama and New Mexico because the waiver policies in these states explicitly excluded females under the age of 19.

---

<sup>23</sup> All results are qualitatively insensitive to the choice of linear probability models rather than probit models.

<sup>24</sup> Because we only have three years of data in the NSFG, we do not control for the full set of policies included in the state-level analysis, because there is not enough variation in some of these variables. For example, every state in the data has an S-CHIP policy implemented by 2002 and none do in 1988 or 1995. This policy is thus completely characterized by the indicator variables for survey year.

We can also augment this model incorporating a woman’s eligibility status for an income-based waiver.<sup>25</sup> In contrast to our analysis of Vital Statistics data described earlier, with microdata we can estimate for each individual whether or not they would be eligible for this type of waiver and can interact this measure of eligibility with an income-based waiver indicator variable representing the status of the policy in each woman’s state/year of residence:

$$Y_{ist} = \phi_o + \phi_1(\text{inc. waiver})_{st} + \phi_2(\text{inc. waiver}_{st} \cdot \text{elig}_{ist}) + \phi_3(\text{dur. waiver})_{st} + \gamma_s + I(1995) + I(2002) + X_{ist} + \varepsilon_{ist} \quad (3)$$

In this formulation, the income-based waiver indicator variable holds constant other broad factors that may be occurring in income-based waiver states following the waiver and the interaction terms highlights whether or not the behavior of those directly affected by the waivers changes in response. This is a triple-difference estimation strategy. Because we are concerned about imputing eligibility for teens based on the difficulty of measuring their income, we use this approach for non-teens only.

### *B. Data*

To examine sexual activity and contraceptive use, we use data from the 1988, 1995, and 2002 cycles of the National Survey of Family Growth (NSFG). These surveys interviewed 8,450, 10,847, and 7,643 women between the ages of 14 and 45 in the three survey years, respectively.<sup>26</sup> The samples are non-representative in that they over-sample teens and other groups of women, but sampling weights are provided to correct for this. State identifiers are

---

<sup>25</sup> Conducting a similar exercise for duration-based waivers is complicated by the complexity of predicting eligibility for waivers of this type. To do so, one would need to know Medicaid coverage in the period following each birth (in states with post-partum based policies) and the woman’s income at that time to determine whether she would have had to go off of Medicaid without the waiver. The NSFG does inquire about Medicaid coverage at the time of delivery of each child, but has no retrospective income measure. Using current income as a proxy for income at the time of birth, we were only able to identify 50 women in these data whose deliveries were covered by Medicaid, whose current income would make her otherwise ineligible for family planning services after the post-partum period expired, and whose most recent birth occurred in a state with a duration-based waiver in place at the time. As a result, we chose not to report an analysis incorporating simulated eligibility for a duration-based waiver.

<sup>26</sup> The 2002 survey also includes information on men, but with just one year of data and only cross-sectional methods available to us, we chose not to use these data.

required for this analysis and are not included on public use NSFG files, but they are available to researchers with permission from the National Center for Health Statistics.<sup>27</sup>

### *C. Descriptive Statistics*

Descriptive statistics regarding sexual activity and contraceptive use for all women and for teens for the years 1988, 1995, and 2002 are reported in Table 5. These statistics update those reported in Levine (2001). In 2002, 36 percent of teens and 72 percent of women age 15-44 had sexual intercourse in the three months prior to the survey. The large majority of sexually active women practice contraception; 17 percent of sexually-active teenagers and 24 percent of sexually active women failed to use contraception at their last intercourse.<sup>28</sup> Although levels of sexual activity are similar across racial/ethnic groups, there are very significant differences in rates of contraceptive use, particularly for teens.

These data reveal some noteworthy trends in sexual behavior and contraceptive use among teenagers over this time period. (There are no obvious trends among women age 15-44.) Rates of sexual activity have declined for all teens, particularly for black, non-Hispanic teens. Fewer teens fail to use contraception now than in the past, although Hispanics still have a higher rate of non-use in 2002 than they did in 1988. With less sexual activity and more contraceptive use, it is not surprising that teen birth rates have been falling. This is further borne out in the statistics showing that that fewer teens are both sexually active and not using contraception in the bottom panel of the table.

### *D. Results: Sexual Activity and Contraceptive Use*

Table 6 reports the estimated coefficients of interest from equation [2] for teens and non-teens and equation [3] for non-teens only for the three dependent variables – sex in past three

---

<sup>27</sup> All analyses using these state identifiers need to be performed in their Research Data Center in Hyattsville, MD. We thank Christopher Rogers for his assistance in using these data.

<sup>28</sup> Table A1 details the types of contraceptive methods that women in the 2002 NSFG used.

months, no birth control during last intercourse in the past three months, and unprotected sex in the past three months. The results in the top panel (from equation [2]) for non-teens indicates that there was no statistically significant impact of the waivers on the likelihood of sex in the past three months, but that income-based waivers increased the likelihood of contraceptive use among sexual active women. We are unable to conclude much regarding the behavior of teens alone because of the magnitude of the standard errors.

The bottom panel of the table switches to a triple difference identification strategy that incorporates predicted eligibility for income-based waivers, as in equation [3]. For all non-teens, we see that there is little evidence suggesting that sexual activity is affected, but we continue to find evidence of increased use of contraception. Over 5 percent fewer sexually active women failed to use contraception at their last intercourse and 3.5 percent fewer women could be identified as having unprotected sex in the past three months.<sup>29</sup> Both estimates are significant at the 5 percent level. These results suggest that the reason that birth rates fell in response to income-based family planning waivers is because they increase the use of contraception.

## **VI. DISCUSSION**

### *A. Estimate of Cost per Birth Avoided*

Since waiver programs require federal expenditures to cover the cost of the family planning services provided, a reasonable question is how much these services cost per birth avoided. We can integrate our estimates along with outside information regarding the estimated cost per program participant to arrive at this figure. According to the Guttmacher Institute

---

<sup>29</sup> We attempted to reconcile this estimate with the estimated reduction in births obtained from Vital Statistics, but we ultimately concluded that such a comparison required too many unverifiable assumptions and the results of this exercise were sensitive to the parameter values we chose. In theory, if we had complete data on the likelihood of becoming pregnant in a given month in the absence of contraception (incorporating both biological capacity and frequency of sexual activity) and the intensity of contraceptive use along with its failure rate, we could simulate how an increase in the likelihood of using contraception would alter birth rates. Unfortunately, our measure of contraceptive use – contraception at last intercourse in the past three months – is insufficient for that purpose.

(2007b), public spending on family planning services totaled \$1.26 billion in FY 2001. According to Frost, et al. (2004), 6.7 million women received services at publicly provided family planning clinics in 2001. This means that the average cost per woman served is \$188. Of course, the cost estimate that we really need is the marginal cost of providing additional services to women brought into the program in the presence of waivers, but no such evidence exists. Instead, we will assume that there is a constant marginal cost and continue to use this \$188 figure.

We can combine this figure with the results provided in this paper to provide a ballpark estimate of the cost of these services per birth avoided. Our analysis of MSIS data on Medicaid family planning receipt showed that income-based waivers increased the percentage of women receiving services by 5.4 percentage points (Table 2 – model with quadratic trends). This means that for every 1,000 women of childbearing age, 54 more obtained family planning through Medicaid after the waiver than before. The birth rate in those states in 1992, before the waivers, stood at a level of about 74 births per 1,000 women. Our estimates in Table 3 suggest that income-based waivers reduced births by 2 percent, or about 1.5 births per year per 1,000 women. Combining these two estimates, we conclude that one birth was avoided for every 36 additional Medicaid family planning recipients. At \$188 per recipient, this means that the cost of avoiding one additional birth through an income-based waiver is roughly \$6,800. Earlier in the paper, we estimated that income-based family planning waivers had a 22 to 44 percent take-up rate. This means that one birth was avoided for every 82 to 164 women made eligible.

#### *B. Impact of Waivers Compared to Other Interventions*

An alternative framework for thinking about the impact of these waivers is to compare the reduction in fertility associated with them to that associated with other policy changes that



could accomplish this goal. First, it is important to recognize that past attempts to increase contraceptive use generally have not been successful in reducing teen fertility, as described earlier. Second, the most recent policy measure aimed at reducing nonmarital and/or teen fertility is welfare reform.<sup>30</sup> In previous work we have found that family cap policies implemented as part of welfare reform in the early and mid 1990s were not effective at reducing birth rates among targeted women (Kearney 2004, Levine 2002.) In their extensive review of studies examining the impacts of welfare reform policies more generally, Grogger and Karoly (2005) conclude that “there is little evidence that welfare reform as a whole lowers childbearing” (p. 196).

More broadly, researchers have examined the incentive role of the welfare system on teen and nonmarital childbearing. Moffitt (1998) reviews this literature and reports that while no consensus exists on the magnitude of the impact, the wide range of point estimates across studies does suggest that there is some positive causal relationship between welfare benefits and the likelihood of female headship. This suggests some role, potentially quite modest, for lowering rates of fertility through a reduction in benefits. Third, from a more historical perspective, abortion legalization in the early 1970s was one policy change that led to a significant reduction in (presumably unwanted) fertility, particularly among teens. Levine, et al. (1999) finds that abortion legalization reduced overall fertility by 4 percent and teen fertility by 12 percent.<sup>31</sup> With the exception of the greater impact associated with a radical policy change like abortion

---

<sup>30</sup> It was an explicit goal of the Personal Responsibility and Work Opportunity Reconciliation Act (PRWORA) of 1996 to reduce the incidence of out-of-wedlock childbearing.

<sup>31</sup> These estimates are probably somewhat misleading because they incorporate travel between states that occurred during the period in which abortion was legal in some states, but not others. Levine, et al. estimates that if there were no travel between states (i.e. moving from a total ban on abortion to legal abortion), the overall birth rate would have fallen by over ten percent. Presumably, taking travel into account in estimating the teen fertility effect would also lead to a substantially higher estimate.

legalization, our estimates indicate that family planning waivers represent a relatively successful attempt at reducing rates of (presumably unwanted) births.

### *C. Contribution to Decline in Teen Fertility Rate*

Earlier, we discussed the fact that teen fertility rates declined dramatically since the early 1990s, falling from a rate of 60.3 births per 1,000 women aged 15-19 in 1990 to a rate of 43.0 in 2002 (Guttmacher Institute, 2006). We also know that the introduction of an income-based family planning waiver is estimated to reduce the teen birth rate by 4.2 percent (in a model with quadratic state trends). Although the impact of the waivers was substantial, they clearly can explain very little of the downward trend in teen fertility. Over our sample period, only 22 percent of teens live in the seven states instituting income-based waivers by 2002. This means that the national teen birth rate would be predicted to decline by  $.22 \cdot .042 \cdot 60.3 = .56$ , or 3 percent of the overall decline.

## **VII. CONCLUSION**

This study took advantage of the quasi-experiment inherent in the waiver process that allowed some states to expand access to contraception for some women. We began by presenting evidence that these income-based waivers did indeed increase the number of women receiving family planning services through Medicaid by two to three times. We then reported the results of models for teens and non-teens, which showed that births fell as a result. Income-based waivers were found to reduce births by 1.7 to 2 percent for non-teens and 4.2 to 4.7 percent for teens. Incorporating information on predicted increases in eligibility brought about by state income-based waiver policies, we estimate that births fell by 8.9 percent among newly-eligible women age 20-44. We further document that this impact can be attributed to increased contraceptive use among sexually-active women.

We used the results of our analysis to show that income-based family planning waivers reduced one birth for every 36 additional Medicaid family planning recipients. Combining this with external information regarding the cost of family planning provision, we estimate the cost of preventing an unwanted birth to be around \$6,800. Based on our review of other interventions designed to reduce unwanted births, this seems like a relatively effective policy intervention.

## References

- Averett, Susan L., Daniel I. Rees, and Laura Argys. 2002. "The Impact of Government Policies and Neighborhood Characteristics on Teenage Sexual Activity and Contraceptive Use." *American Journal of Public Health*. 92(11): pp. 1773-1778.
- Bailey, Martha J. 2006. "More Power to the Pill: The Impact of Contraceptive Freedom on Women's Life Cycle Labor Supply." *Quarterly Journal of Economics*. 121(1): pp. 289-320.
- Besley, Timothy and Anne Case. 2000. "Unnatural Experiments? Estimating the Incidence of Endogenous Policies" *Economic Journal* 110(467): F672-F694
- Broadus, Matthew, Shannon Blaney, Annie Dude, Jocelyn Guyer, Leighton Ku, and Jaia Peterson. 2002. *Expanding Family Coverage: States' Medicaid Eligibility Policies for Working Families in the Year 2000*. Washington, DC: Center on Budget and Policy Priorities.
- Council of Economic Advisers. 1997. "Technical Report: Explaining the Decline in Welfare Receipt, 1993-1996." Washington, D.C.: Executive Office of the President of the United States.
- Council of Economic Advisors. 1999. "Technical Report: Economic Expansion, Welfare Reform, and the Decline in Welfare Caseloads: An Update." Washington, D.C.: Executive Office of the President of the United States.
- Crouse, Gil. 1999. "State Implementation of Major Changes to Welfare Policies, 1992-1998." Washington, D.C.: Office of Human Services Policy, Assistant Secretary for Planning and Evaluation, U.S. Department of Health and Human Services.
- DiCenso, Alba, Gordon Guyatt, A. Willan, and L. Griffith. 2002. "Interventions to Reduce Unintended Pregnancies among Adolescents: Systematic Review of Randomized Controlled Trials." *British Medical Journal*. 324 (7351): 1426-1434.
- Edwards, Joanna, Janet Bronstein, and Kathleen Adams. 2003. *Evaluation of Medicaid Family Planning Demonstrations*. Alexandria, VA: The CNA Corporation.
- Finer, Lawrence B. and Stanley K. Henshaw. 2003. "Abortion Incidence in the U.S. in 2000." *Perspectives on Sexual and Reproductive Health*. 35(1): 6-15.
- Frost Jennifer J., Adam Sonfield, and Rebecca Benson Gold. 2006. "Estimating the Impact of Expanding Medicaid Eligibility for Family Planning Services," Occasional Report, New York: Guttmacher Institute, No. 28.
- Frost, Jennifer J., Lori Frohwirth, and Alison Purcell, 2004. "The Availability and Use of Publicly Funded Family Planning Clinics: U.S. Trends, 1994-2001." *Perspectives on Sexual and Reproductive Health*. 36 (5): pp. 206-215.

- Gallagher, L. Jerome, Megan Gallagher, Kevin Perese, Susan Schreiber, and Keith Watson. 1998. *One Year after Federal Welfare Reform: A Description of State Temporary Assistance for Needy Families (TANF) Decisions as of October 1997*. Washington D.C.: Urban Institute, Occasional Paper Number 6.
- Gertler, Paul J. and John W. Molyneaux. 1994. "How Economic Development and Family Planning Programs Combined to Reduce Indonesian Fertility," *Demography* 31(1) (February): 33-63.
- Gertler Paul J. and John W. Molyneaux. 2000. "The Allocation and Impact of Planning Program Inputs in Indonesia," *Population Development Review*, Vol. 26 (Sup) pp. 61-88.
- Gold, Rachel Benson. 2004. "Doing More for Less: Study Says State Medicaid Family Planning Expansions are Cost-Effective." *The Guttmacher Report on Public Policy*. 7(1): 1-2.
- Gold, Rachel Benson and Adam Sonfield. "Reproductive Health Services for Adolescents under the State Children's Health Insurance Program." *Family Planning Perspectives* 33(2): pp. 81-87.
- Grogger, Jeffrey and Lynn A. Karoly. 2005. *Welfare Reform: Effects of a Decade of Change*. Cambridge, Massachusetts: Harvard University Press.
- Guttmacher Institute. 1997. *Issues in Brief: The Limitations of U.S. Statistics on Abortion*. New York: Alan Guttmacher Institute.
- Guttmacher Institute. 2006. *U.S. Teenage Pregnancy Statistics: National and State Trends and Trends by Race and Ethnicity*. New York: Alan Guttmacher Institute.
- Guttmacher Institute. 2007a. "State Medicaid family planning eligibility expansions," *State Policies in Brief*, New York: Guttmacher Institute, June 2006, [http://www.guttmacher.org/statecenter/spibs/spib\\_SMFPE.pdf](http://www.guttmacher.org/statecenter/spibs/spib_SMFPE.pdf). (accessed March 28<sup>th</sup>, 2007).
- Guttmacher Institute. 2007b. *Public Funding for Contraceptive, Sterilization and Abortion Services, FY 1980-2001*. <http://www.guttmacher.org/pubs/fpfunding/index.html> (accessed March 28th, 2007).
- Henshaw, Stanley K. Teenage Abortion and Pregnancy Statistics by State, 1992. *Family Planning Perspectives*. Vol. 29, No. 3 (May/June 1997). pp. 115-122.
- Henshaw, Stanley K. and Dina J. Feivelson. "Teenage Abortion and Pregnancy Statistics by State, 1996. *Family Planning Perspectives*. Vol. 32, No. 6 (November/December 2000). pp. 272-280.
- Kearney, Melissa S. "Is There an Effect of Incremental Welfare Benefits on Fertility Behavior? A Look at the Family Cap" *Journal of Human Resources*, 2004, 39(2): 295-325.

Kirby, Douglas. 1997. *No Easy Answers: New Research Findings on Programs to Reduce Teen Pregnancy*. Washington, DC: National Campaign to Prevent Teen Pregnancy.

Kirby, Douglas. 2001. *Emerging Answers: New Research Findings on Programs to Reduce Teen Pregnancy*. Washington, DC: National Campaign to Prevent Teen Pregnancy.

Levine, Phillip B. 2001. "The "Sexual Activity and Birth Control Use of American Teenagers," *An Economic Analysis of Risky Behavior among Youths*. Jonathan Gruber, editor. Chicago: University of Chicago Press.

Levine, Phillip B. 2002. "The Impact of Social Policy and Economic Activity Throughout the Fertility Decision Tree." National Bureau of Economic Research working paper 9021.

Levine, Phillip B. 2004. *Sex and Consequences: Abortion, Public Policy, and the Economics of Fertility*. Princeton, NJ: Princeton University Press.

Levine, Phillip B., Douglas Staiger, Thomas J. Kane, and David J. Zimmerman. 1999/ "Roe v. Wade and American Fertility." *American Journal of Public Health*. pp. 199-203.

Lundberg, Shelly and Robert D. Plotnick, 1990. "Effects of State Welfare, Abortion and Family Planning Policies on Premarital Childbearing Among White Adolescents" *Family Planning Perspectives*. 22 (6): 246-251+275.

Martin, Joyce A., Brady E. Hamilton, Paul D. Sutton, Stephanie J. Ventura, Fay Menacker, and Martha L. Munson. 2005. "Births: Final Data for 2003." *National Vital Statistics Reports*. 54(2).

Mellor, Jennifer M. 1998. "The Effect of Family Planning Programs on the Fertility of Welfare Recipients: Evidence from Medicaid Claims." *Journal of Human Resources*. 33 (4): pp. 866-895.

Moffitt, Robert. 1998. "The effect of welfare on marriage and fertility." In *Welfare, the family, and reproductive behavior*, ed. R. Moffitt, Washington DC: National Academy Press: 50-97.

Molyneaux, John W. and Paul J. Gertler. 2000. "The Impact of Targeted Family Planning Programs in Indonesia." *Population and Development Review* 26: 61-85.

National Center for Health Care Statistics. *Fertility, Family Planning, and Reproductive Health of U.S. Women: Data from the 2002 National Survey of Family Growth*. Vital and Health Statistics Series 23, Number 5. Hyattsville, MD: December 2005.

Paton, David. 2002. "The Economics of Family Planning and Underage Conceptions." *Journal of Health Economics*. 21 (2): 207-225.

Pritchett, Lant H. "Desired Fertility and the Impact of Population Policies," *Population and Development Review* 20(7) (March): 1-55.

Rowe, Gretchen, Kevin McManus, and Tracy Roberts. 2004. *The Welfare Rules Databook: State Policy as of July 2001*. Washington, D.C.: The Urban Institute.

Rowe, Gretchen with Victoria Russell. 2004. *The Welfare Rules Databook: State Policy as of July 2002*. Washington, D.C.: The Urban Institute, October.

Rowe, Gretchen with Jeffrey Versteeg. 2005. *The Welfare Rules Databook: State Policy as of July 2003*. Washington, D.C.: The Urban Institute

Santelli, John, Roger Rochat, Kendra Hatfield-Timajchy, Brenda Colley Gilbert, Kathryn Curtis, Rebecca Cabral, Jennifer S. Hirsh, Laura Schieve, and Other Members of the Unintended Pregnancy Working Group. 2003. "The Measurement and Meaning of Unintended Pregnancy." *Perspectives on Sexual and Reproductive Health*. Vol. 35, No 2. pp. 94-101.

U.S. Department of Health and Human Services. *Setting the Baseline: A Report on State Welfare Waivers*. 1997. Washington, D.C.: Office of Human Services Policy, Assistant Secretary for Planning and Evaluation, U.S. Department of Health and Human Services.

Wall Street Journal Online, "Large Majorities Support More Access to Birth Control Information, and Agree that it is a Good Way to Prevent Abortions." *Wall Street Journal Online: Health Care Poll*. Vol. 5, No. 10: June 22, 2006.

Figure 1: Trend in Non-Teen Birth Rates by Waiver Status

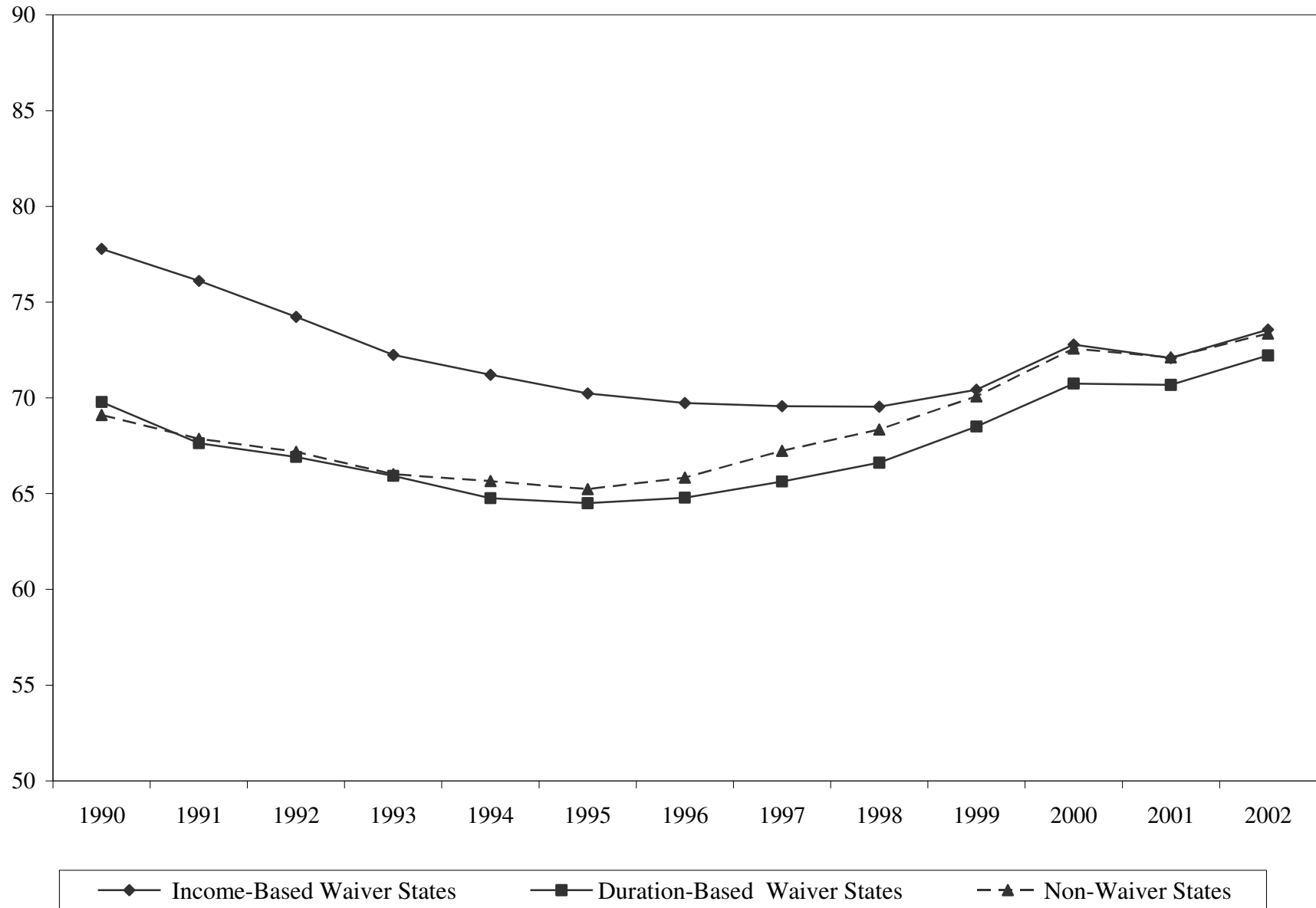




Figure 2: Trend in Teen Birth Rates by Waiver Status

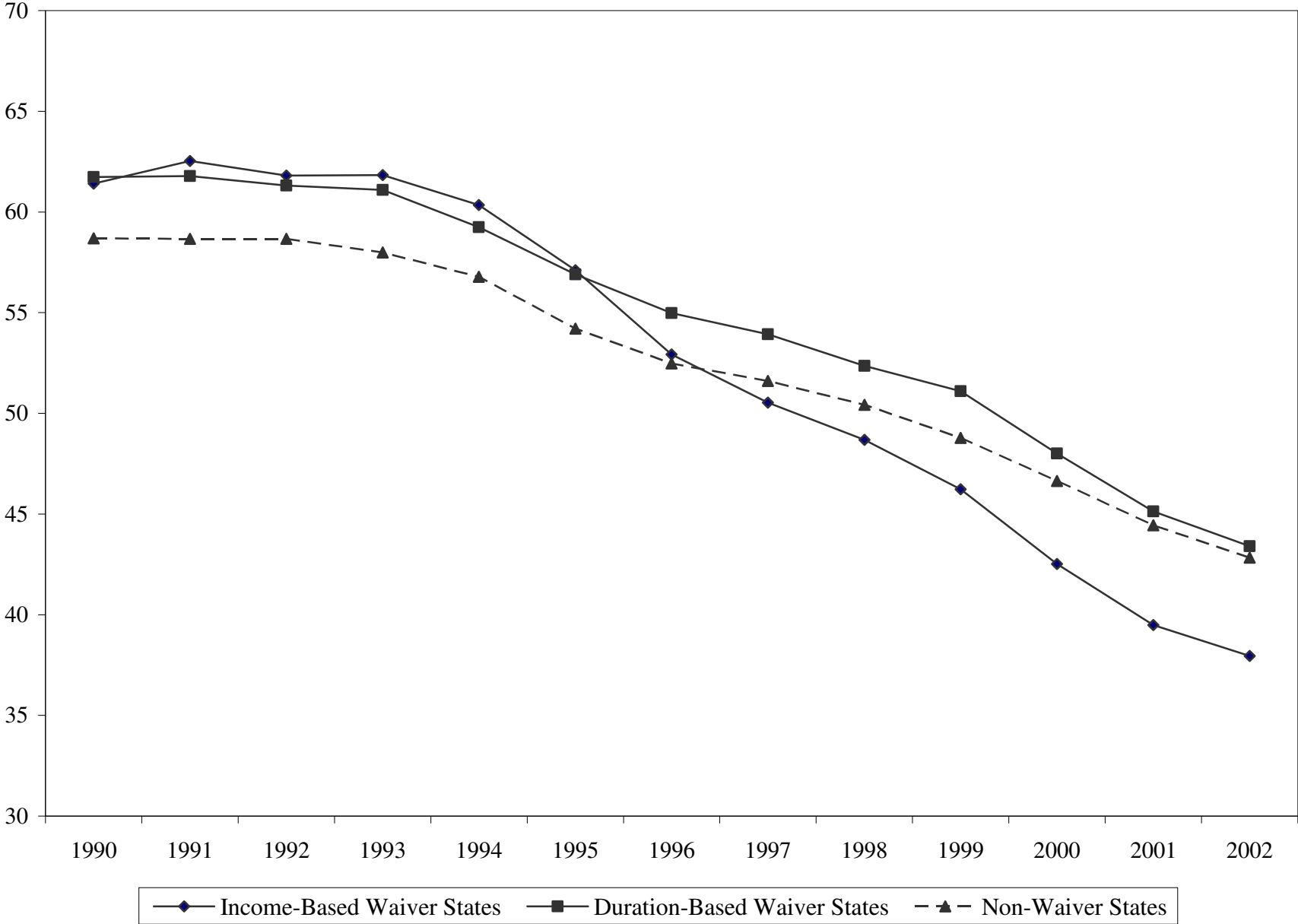


Table 1: States with Section 1115 Medicaid Family Planning Waivers

State	Date approved	Date implemented	Basis for Eligibility		
			Losing Coverage Postpartum	Losing Coverage for Any Reason	Based Solely on Income (FPL)
Alabama	7/1/2000	10/1/2000			133% of poverty
Arizona	4/1/1995	8/1/1995	2 years		
Arkansas	6/18/1996	9/1/1997			200%
California	1/1/1997	1/1/1997			200%
Delaware	5/17/1995	1/1/1996		2 years	
Florida	8/23/1998	9/1/1998	2 years		
Illinois	6/23/2003	4/1/2004		5 years	
Iowa	1/10/2006	2/1/2006			200%
Louisiana	6/6/2006	7/1/2006			200%
Maryland	12/5/1994	2/1/1995	5 years		
Michigan	3/1/2006	7/1/2006			185%
Minnesota	7/20/2004	7/1/2006			200%
Mississippi	1/31/2003	10/1/2003			185%
Missouri	4/29/1998	2/1/1999	1 year		
New Mexico	8/1/1997	7/1/1998			185%
New York	9/27/2002	10/1/2002			200%
New York	9/27/2002	10/1/2002	2 years		
North Carolina	11/5/2004	11/5/2005			185%
Oklahoma	11/5/2004	4/1/2005			185%
Oregon	10/14/1998	1/1/1999			185%
Rhode Island	11/1/1993	8/1/1994	2 years		
South Carolina	1/1997	7/1/1997			185%
South Carolina	12/1993	7/1/1994	2 years		
Texas	12/21/2006	1/1/2007			185%
Virginia	7/22/2002	10/1/2002	2 years		
Washington	3/6/2001	7/1/2001			200%
Wisconsin	6/14/2002	1/1/2003			185%

*Notes:* Waivers in Alabama, Illinois, Louisiana, Michigan, New Mexico, North Carolina, and Oklahoma are restricted to individuals age 19 and older. The dates for California correspond to policies funded by the state; federal financing of these waiver policies commenced two years later. Sources: Frost, et al. (2006), [http://www.guttmacher.org/statecenter/spibs/spib\\_MFPW.pdf](http://www.guttmacher.org/statecenter/spibs/spib_MFPW.pdf) (accessed 9/28/05), <http://www.cms.hhs.gov/medicaid/waivers/waivermap.asp> (accessed 9/28/05), and Guttmacher Institute (2006) <[http://www.guttmacher.org/statecenter/spibs/spib\\_SMFPE.pdf](http://www.guttmacher.org/statecenter/spibs/spib_SMFPE.pdf)> (accessed 9/2/06).

Table 2: Impact of Waivers on the Number of Medicaid Family Planning Clients as a Proportion of the Female Population Age 15-44

	Mean Proportion Medicaid FP Clients in 1992 (1)	No State Trends (2)	Linear State Trends (3)	Quadratic State Trends (4)
Income-Based Waiver	0.046	0.116 (0.027)	0.088 (0.024)	0.053 (0.013)
Duration-Based Waiver	0.037	-0.006 (0.007)	0.013 (0.011)	0.012 (0.008)
Neither	0.044	---	---	---
Number of Observations	---	538	538	538

*Notes:* Columns (2) to (4) report results from separate regressions where the dependent variable is the proportion of the female population age 15-44 who received Medicaid family planning services. All regressions control for state and year fixed effects, the state unemployment rate, the maximum welfare benefit for a family of three in the state-year, and whether the following policies were in place in the respondent's state at the beginning of the survey year – welfare family cap, TANF, SCHIP, Medicaid coverage of abortion, abortion parental notification requirements, abortion delay rules, and mandated private health insurance coverage of family planning services. They also control for the percent of the state-year female population in the following demographic groups: married, white, Hispanic, four education groups, and age 15-17, 18-19, 20-24, 25-29, 30-34, and 35-39. All regressions are weighted by the population of women age 15 to 44 in the state and year. Standard errors are adjusted for clustering at the state level. Data on Medicaid family planning beneficiaries for the years 1999-2002 are from the Medicaid Statistical Information System (MSIS), downloaded from <http://www.cms.hhs.gov> in December 2006. Comparable data for 1992-1998 comes from national HFCA-2082 tables, graciously provided to us by Kosali Simon.

Table 3: Impact of Medicaid Family Planning Waivers on Births and Abortions for Teens and Non-Teens

	Teens (15-19)			Births: Non-Teens (20-44) Abortions: All Women (15-44)		
	No State Trends	Linear State Trends	Quadratic State Trends	No State Trends	Linear State Trends	Quadratic State Trends
Births						
Income-Based Waiver Implemented	-0.071 (0.024)	-0.047 (0.013)	-0.042 (0.014)	-0.053 (0.012)	-0.017 (0.009)	-0.020 (0.009)
Duration-Based Waiver Implemented	0.002 (0.020)	-0.008 (0.015)	0.014 (0.010)	-0.016 (0.008)	-0.016 (0.009)	-0.007 (0.006)
Number of Observations	637	637	637	663	663	663
Abortions						
Income-Based Waiver Implemented	-0.085 (0.065)	0.064 (0.102)	0.175 (0.159)	-0.039 (0.035)	0.121 (0.055)	0.075 (0.087)
Duration-Based Waiver Implemented	0.010 (0.055)	-0.073 (0.065)	-0.040 (0.138)	0.064 (0.049)	0.012 (0.048)	-0.071 (0.090)
Number of Observations	196	196	196	255	255	255

*Notes:* Each column represents the results from separate regressions on the log of the birth or abortion rate in models that also include the following control variables: the unemployment rate, indicators for whether welfare reforms were implemented (including pre-TANF waivers) and for whether the reforms included a family cap, the maximum AFDC/TANF benefit for a family of three, an indicator for whether S-CHIP was implemented in the state, indicator variables for whether there are laws restricting abortion access by creating mandatory delays, requiring some form of parental involvement for minors, and restriction on Medicaid funding for abortions, an indicator for whether states have comprehensive contraception coverage, variables measuring the percentage of the state's population that is married, white, Hispanic. Regressions for women 20-44 also include the following education and age controls: high school dropout, high school graduate, attended some college and between the ages of 15-17, 18-19, 20-24, 25-29, 30-34, and 35-39. For the teenage regressions, observations from Alabama and New Mexico are dropped from the analysis sample because these states implemented income-based waivers that explicitly did not apply to women under the age of 19. All regressions are weighted by the relevant population of women in the state and year. Standard errors are reported in parenthesis and are adjusted for clustering at the state level.

Table 4: Impact of Medicaid Family Planning Waivers on Overall Births and Births of Eligible Women, by Demographic Group

	Income-Based Waiver (1)	Duration-Based Waiver (2)	Estimated % Made Eligible by Income-Based Waiver (3)	Impact of Income-Based Waiver on Eligible Women in Group (4)
<i>Age group</i>				
Age 15-17	-0.012 (0.014)	0.019 (0.011)	---	---
Age 18-19	-0.068 (0.018)	0.014 (0.016)	---	---
Age 20-24	-0.051 (0.021)	0.014 (0.016)	34.4	-0.148
Age 25-34	-0.009 (0.006)	-0.001 (0.009)	21.9	-0.041
Age 35-44	-0.007 (0.013)	-0.013 (0.008)	18.1	-0.039
Age 20-44	-0.020 (0.009)	-0.007 (0.006)	22.5	-0.089
<i>Race/ethnicity</i>				
White, non-Hispanic	-0.010 (0.007)	-0.006 (0.008)	19.3	-0.041
Black, non-Hispanic	-0.013 (0.021)	0.002 (0.008)	32.1	-0.040
Hispanic	-0.029 (0.010)	0.029 (0.023)	31.2	-0.093
<i>Education</i>				
High School Dropouts	-0.038 (0.013)	-0.052 (0.022)	36.8	-0.103
High School Graduates	-0.028 (0.009)	-0.015 (0.007)	27.0	-0.104
Some College	-0.003 (0.008)	-0.010 (0.015)	20.3	-0.015
College Graduates	-0.007 (0.007)	-0.016 (0.008)	10.1	-0.069

Notes: Each row in Columns 1 and 2 represents the results from separate regressions where the dependent variable is the log of the birth rate (by age and race) or the log of the number of births (by education) in models that all include state-specific quadratic trends. In Column 3, statistics reflect the estimated percentage of the population that is eligible for income-based waivers in those states with such waivers in the 2000 Census. Statistics in Column 4 reflect the simulated impact of income-based waivers on the eligible population, which is the coefficient in Column 1 divided by the percentage (divided by 100) in Column 3. See notes to Table 3 for additional X variables in all regressions and other comments.

Table 5: Sexual Activity and Contraception Use by Race/Ethnicity

	Ages: 15-19			Ages: 15-44		
	1988	1995	2002	1988	1995	2002
Sexual Activity in Past 3 Months						
All	0.43	0.40	0.36	0.78	0.77	0.72
White NH	0.43	0.40	0.38	0.79	0.79	0.74
Black NH	0.51	0.46	0.35	0.79	0.77	0.68
Hispanic	0.31	0.45	0.31	0.72	0.73	0.70
No Contraception Use during Last Intercourse in Past Three Months (Conditional on Sexual Activity)						
All	0.23	0.32	0.17	0.22	0.25	0.24
White NH	0.20	0.30	0.11	0.20	0.23	0.21
Black NH	0.32	0.30	0.26	0.28	0.29	0.31
Hispanic	0.31	0.47	0.37	0.28	0.32	0.31
Sexually Active in Past Three Months and No Contraception Used at Last Intercourse						
All	0.10	0.12	0.06	0.17	0.19	0.17
White NH	0.09	0.11	0.04	0.16	0.18	0.16
Black NH	0.16	0.14	0.09	0.22	0.22	0.21
Hispanic	0.10	0.20	0.12	0.20	0.23	0.22

Source: National Survey of Family Growth (NSFG)

Table 6: Impact of Waivers on Sexual Activity and Contraceptive Use

	Sex in past 3 months (1)	No Birth Control During Last Intercourse in Past 3 Months (2)	Unprotected Sex in Past 3 Months (3)
Non-Teens (20-44): n = 23,123			
Income-Based Waiver	0.045 (0.028)	-0.064 (0.029)	-0.043 (0.025)
Duration-Based Waiver	-0.001 (0.029)	0.013 (0.029)	0.009 (0.024)
Teens (15-19): N = 3,800			
Income-Based Waiver	-0.178 (0.053)	0.002 (0.128)	-0.022 (0.048)
Duration-Based Waiver	-0.196 (0.055)	0.048 (0.073)	-0.009 (0.031)
Non-Teens (20-44): n = 23,123			
Income-Based Waiver	0.043 (0.025)	-0.051 (0.029)	-0.034 (0.024)
Income-Based Waiver* Predicted Eligibility	0.009 (0.026)	-0.054 (0.018)	-0.035 (0.017)
Duration-Based Waiver	-0.004 (0.029)	0.011 (0.029)	0.008 (0.025)

*Notes:* The top two panels report the results of estimating equation (2) with indicator variables for a main waiver effect for each type of waiver included in the model. For non-teen women, we additionally estimate a model that interacts an indicator for an income-based waiver with another variable indicating whether the individual is predicted to be covered by the waiver. These regressions are reported in the third panel. Standard errors are adjusted for clustering at the state level and are reported in parenthesis. All regressions control for the following individual demographics: age group (where appropriate), race/ethnic group (where appropriate), education group (except for teens), marital status, and whether the respondent has any children living in her household. All regressions also control for the state-year unemployment rate, the maximum welfare benefit for a family of three in the state-year, whether a welfare family cap was in place in the respondent's state at the beginning of the survey year, year effects, and state fixed effects. Observations are weighted by NSFG survey weights. For the teenage regressions, observations from Alabama and New Mexico are dropped from the analysis sample because these states implemented income-based waivers that explicitly did not apply to women under the age of 19.

Appendix Table 1: Form of Last Birth Control among Sexually Active Women

	Percent using any method at last intercourse	Percent of women using method, conditional on contraceptive use					
		Natural methods	Condom	Pill	Female Insert	DepoProvera/ Norplant	Sterile (either partner)
		(1)	(2)	(3)	(4)	(5)	(6)
All women (n=18,602 )	74.3	6.1	19.6	28.4	5.4	2.9	37.6
Teens (n=1,410 )	74.2	6.2	40.9	44.6	1.6	6.2	0.5
Non-teens (n=17,192 )	74.3	6.1	17.7	26.9	5.7	2.6	40.9
Unmarried (n=7,816 )	77.4	5.8	25.4	38.9	4.4	4.4	21.1
Less than HS (n= 3,221 )	68.3	4.4	13.8	17.2	4.9	4.3	55.3
White non-Hispanic (n=11,017 )	76.8	6.1	18.5	29.2	5.4	2.2	38.6
Black non-Hispanic (n= 4,503 )	69.7	3.8	20.5	27.6	4.6	5.3	38.3
Hispanics (n= 2,502 )	65.1	7.3	22.0	25.9	5.6	5.8	33.3
No Children in Household (n= 6,530 )	72.7	6.2	25.6	44.0	4.7	2.2	17.3
Children in Household (n=12,072 )	75.2	6.1	16.0	19.0	5.8	3.4	49.8