

NBER WORKING PAPER SERIES

MONETARY POLICY AND THE VOLATILITY
OF REAL EXCHANGE RATES IN NEW ZEALAND

Kenneth D. West

Working Paper 10280
<http://www.nber.org/papers/w10280>

NATIONAL BUREAU OF ECONOMIC RESEARCH
1050 Massachusetts Avenue
Cambridge, MA 02138
January 2004

The initial version of this paper was drafted during my tenure as Professorial Fellow of Monetary Economics at the Reserve Bank and Victoria University of Wellington, whose hospitality I gratefully acknowledge. Neither institution is responsible for the conclusions expressed in the paper. I thank the National Science Foundation for financial support, Danica Irvine and Dean Minot for excellent research assistance, the editor and two anonymous referees for helpful comments, and John McDermott, participants in the Reserve Bank of New Zealand's Professorial Workshop in Monetary Policy, and many Reserve Bank economists for helpful discussions. The views expressed herein are those of the authors and not necessarily those of the National Bureau of Economic Research.

©2004 by Kenneth D. West. All rights reserved. Short sections of text, not to exceed two paragraphs, may be quoted without explicit permission provided that full credit, including © notice, is given to the source.

Monetary Policy and the Volatility of Real Exchange Rates in New Zealand

Kenneth D. West

NBER Working Paper No. 10280

January 2004

JEL No. E520, F310, F410

ABSTRACT

The relationship between interest rates and exchange rates is puzzling and poorly understood. But under some standard assumptions, interest rates can be adjusted to smooth real exchange rate movements at the possible price of increased volatility in other variables. In New Zealand, estimates made under some generous suppositions about what monetary policy is able to accomplish suggest that decreasing real exchange rate volatility by about 25% would require increasing output volatility by about 10-15%, inflation volatility by about 0-15% and interest rate volatility by about 15-40%.

Kenneth D. West

Department of Economics

University of Wisconsin

1180 Observatory Drive

Madison, WI 53706

and NBER

kdwest@wisc.edu

I. INTRODUCTION

The primary goal of monetary policy in New Zealand is price stability. But that is not the sole mandate of the Reserve Bank of New Zealand. Recent Policy Targets Agreements have also called on the Bank to “avoid unnecessary instability in output, interest rates and the exchange rate.”

Thus the Bank is directed to make output, interest rates and the exchange rate variables of interest beyond the usefulness of these variables for understanding and forecasting inflation, perhaps interpretable as a direction to trade off price stability with stability in these other variables. This paper considers the possibility of using interest rate policy to trade exchange rate stability against stability in other variables. It makes two points. Section 2 of the paper reminds the reader that the relationship between interest rate policy and exchange rates is quite uncertain. Specifically, I remind the reader of the empirical failure of “uncovered interest parity.” In light of such a failure, it will likely be difficult in practice to use interest rate adjustments to stabilize exchange rates with any precision.

The rest of the paper follows a considerable literature that ignores the reminder just noted. It embeds a standard interest parity relationship between interest rates and exchange rates in a linear macro model. It uses counterfactual calculations to supply rough quantitative estimates of that tradeoff, focusing on stability of real exchange rates on the one hand vs. stability of output, inflation and interest rates on the other. The point estimates suggest that decreasing real exchange rate volatility by about 25% would require increasing output and inflation volatility by roughly 10% and interest rate volatility by roughly 20%.

The estimates are derived from a simple linear model that is broadly consistent with both

textbook and New Keynesian models. The mechanism the Bank is assumed to use to stabilize real exchange rates is to adjust interest rates in response to transitory movements in exchange rates, with interest rate hikes (cuts) coming in response to transitory depreciations (appreciations) of the New Zealand dollar.

Three cautionary notes. First, these estimates are likely to be optimistic ones. This is not only because the model assumes that interest rate adjustments affect exchange rates in a reliable and well understood way. As well, and at a more prosaic level, the computations assume away a host of other practical problems: they assume that the Bank knows the steady state level of the real exchange rate, that the Bank can react to exchange rate movements as quickly as exchange rates react to interest rate movements, that excellent data on output and inflation are available contemporaneously, and so on. So in practice a 25% reduction in real exchange rate volatility is likely to be associated with greater increases in volatility of other variables than stated above.

Second, this paper does not consider the desirability of explicitly targeting real exchange rate movements. As indicated above, statements in recent Policy Targets Agreements serve as my motivation to estimate a tradeoff. I will refer to estimates of changes in volatility as the “price” paid for targeting real exchange rate movements. Of course, the appropriate measure of any tradeoff is one of utility and not volatility. The utility function to interpret the estimates is to be supplied by the reader. See among others Benigno and Benigno (2000), Clarida et al. (2001), and Kollman (2002) for formal analyses of the welfare properties of monetary rules in open economies.

Third, the fact that the focus of this paper is on real exchange rate stabilization should not be interpreted as an assertion that such stabilization is the only or even most important way

exchange rates might affect monetary policy. In a small open economy like New Zealand's, exchange rates, both real and nominal, are central to understanding and forecasting the evolution of inflation and output. I take this point as given, and consider the separate question of the cost of real exchange rate stabilization.

Section 2 of the paper notes the uncertainty of the link between interest rates and exchange rates. Section 3 presents the model. Section 4 presents empirical results. Section 5 concludes. An Appendix includes some algebraic details.

2. UNCERTAIN INTEREST PARITY

For countries with roughly similar inflation rates, exchange rate changes are hard to predict. In my view, they are even harder to predict than are stock price changes, which are notoriously difficult to predict. Indeed, a vast literature studying exchange rate prediction has concluded that the best single predictor of the exchange rate next period—tomorrow, next week, next month, maybe even next year—is the exchange rate this period. One generally cannot do better than a “no change” forecast for exchange rates. The seminal reference is Meese and Rogoff (1983); a recent update is Cheung et al. (2002).

Those unfamiliar with the exchange rate models may think this “random walk” result is precisely what is predicted by classic efficient markets theory as expounded by Samuelson (1965). But in fact this is not the case. Explaining why not will take us to the “uncovered interest parity” relationship that is the central link between interest rates and exchange rates in macroeconomic models such as the one developed and estimated in this paper.

Recall that the essence of Samuelson's (1965) model is not that asset prices changes are

unpredictable but that asset *returns* are unpredictable. Samuelson explicitly noted that if an asset pays a dividend in a given time period, the asset's return (sum of dividend and price change) will be unpredictable only if there is, on average, an offsetting movement in the asset price. For equity returns, for example, this means that the day a stock goes ex-dividend, its price should fall, on average, by the amount of the dividend. And indeed this implication has been found to be more or less consistent with the behavior of U.S. stock price data (an early reference is Elton and Gruber (1970)), at least once one takes into account complications induced by taxes and transactions costs.

The reader may wonder what a discussion about dividends has to do with exchange rates. It is of course true that holding foreign currency does not automatically entitle one to earn money labeled "dividends." But from the point of view of Samuelson's (1965) efficient markets theory, interest payments on nominally riskless government debt play precisely the role of dividends. To see why, let us define the following notation:

(2.1) i_t : interest rate in New Zealand,

i_t^* : interest rate in foreign country,

s_t : log nominal exchange rate, measured as \$NZ/foreign currency,

E_t : mathematical expectations conditional on a period t information set.

I follow the convention that a higher value of s_t denote a weaker (depreciated) currency.

In the notation of (2.1), uncovered interest parity may be written:

$$(2.2) \quad i_t = i_t^* + E_t s_{t+1} - s_t.$$

The left hand side is the return from investing in domestic (New Zealand) bonds. The right hand side is the expected return from the following investment: convert from New Zealand dollars to foreign currency, buy the foreign bond that pays i_t^* , convert the proceeds back to New Zealand dollars. If investors are risk neutral, as assumed by Samuelson (1965), equality of expected returns should hold, and equation (2.2) follows. (For example, if the New Zealand interest rate i_t is (say) 4 percent higher than the foreign interest rate i_t^* , then our hypothetical investor must expect that by investing abroad he will earn 4 percent via depreciation of the New Zealand dollar [$E_t s_{t+1} - s_t = .04$].) Alternatively, investors cannot expect to make money by borrowing at rate i_t and investing abroad. In (2.2), the expected asset price change is $E_t s_{t+1} - s_t$, while the net “dividend” is $i_t^* - i_t$; Samuelson’s (1965) model says that the total return $i_t^* - i_t + E_t s_{t+1} - s_t$ is unpredictable.

Observe that uncovered interest parity (2.2) states that exchange rate changes are predictably related to interest rate differentials; according to uncovered interest parity, exchange rates do *not* follow a random walk. I began this section by noting that exchange rate changes are unpredictable, which means in particular that they are not well predicted by interest rate differentials. This is illustrated by Figures 1(a)-1(c), which present scatterplots of begin of quarter 90 day interest rate differentials (horizontal axis) with subsequent quarterly percentage changes in nominal exchange rates (vertical axis), for the New Zealand dollar versus the currencies of Australia (Figure 1a), Japan (1b) and the U.S. (1c). The sample period is 1986:2-2003:1. The interest rate differentials are expressed at quarterly rates. Were uncovered interest

parity to hold, the dots would be scattered around a forty five degree line. No such pattern is evident. Indeed, the point estimate of correlation between the two series is *negative* for the U.S. and Japan, and the estimated positive correlation for Australia is insignificantly different from zero. A vast literature finds similar results. See Lewis (1995) for a general survey and Razzak and Margaritis (2002) for recent New Zealand evidence.

So fitting the historical data requires the addition of variables to (2.2). In the empirical work presented below, I take the tack of appending a serially correlated shock, call it u_{rt} ; the “ r ” stands for “risk premium:”

$$(2.3) \quad i_t - i_t^* = E_t s_{t+1} - s_t + u_{rt}.$$

In this empirical work, I use historical data and regression residuals to construct a series for u_{rt} (and other unobserved shocks, though such shocks are not important at the moment). When I trace out the effects of alternative interest rate policies, I assume that the time series for u_{rt} is invariant to such policies. That is, *ceteris paribus*, movements in i_t lead one-to-one to movements in expected exchange rate depreciation, where one of the *cetera* held fixed is u_{rt} . This may not be a good assumption, but it arguably is as good as any. A good assumption about how u_{rt} will change as monetary policy changes requires a good model for the shock u_{rt} . We do not have such a model. Possible explanations for u_{rt} include a risk premium generated as the usual covariance with the market portfolio (e.g. Backus et al. (2001)) or misperceptions about determinants of exchange rates (e.g., Gourinchas and Tornell (2002)). Each explanation has substantial empirical or theoretical difficulties.

The lesson to be drawn is that the results about to be developed and presented need to be interpreted with an unusual amount of caution.

3. THE MODEL

A. Specification

The model is broadly consistent with recent New Keynesian work on monetary policy in small open economies, such as Galí and Monacelli (2002). An IS curve, a Phillips curve, a monetary policy rule and an interest parity equation are specified for New Zealand. These are forward looking, with all dynamics and persistence due to serial correlation in exogenous shocks. As well, exogenous processes are posited for foreign (rest of world) output, inflation and interest rates.

For convenience, I refer to a foreign “country”, although the empirical work defines the foreign country as a trade weighted average of several foreign countries. Define the following notation in addition to that defined in (2.1):

(3.1) y_t = output gap in New Zealand, y_t^* = output gap in foreign country;

p_t, p_t^* : log price levels (CPI);

π_t, π_t^* : inflation (first difference of log consumer price level);

$q_t = s_t - (p_t - p_t^*)$: log real exchange rate;

I repeat that I follow the convention in which an increase in the exchange rate (real or nominal) corresponds to a depreciation rather than appreciation of the New Zealand dollar.

The IS and Phillips curve equations are:

$$(3.2) \quad y_t = \alpha_{y^*} y_t^* + \alpha_q q_t - \alpha_r (i_t - E_t \pi_{t+1}) + u_{y_t}$$

$$(3.3) \quad \pi_t = \beta_\pi E_t \pi_{t+1} + \beta_y y_t + u_{\pi_t}$$

In (3.2) and (3.3), u_{y_t} and u_{π_t} are exogenous shocks, which in the empirical work will be serially correlated. Here and throughout I suppress constant terms.

The IS curve (3.2) can be justified in either of two related ways. The first is as a textbook open economy aggregate demand curve. In this case, α_y and α_q are positive and reflect the responsiveness of net exports to movements in foreign output y_t^* and the real exchange rate q_t ; α_r is negative. A second is from New Keynesian models with certain assumptions about preferences, risk sharing and purchasing power parity. For example, in Galí and Monacelli (2002), which assumes that uncovered interest parity and instantaneous purchasing power parity, (3.2) holds with α_{y^*} and α_q functions of preference parameters and $\alpha_r=0$; in the particularly simple case of logarithmic preferences, $\alpha_{y^*}=1$, $\alpha_q > 0$ is increasing in the share of foreign produced goods in New Zealand consumption, and u_{y_t} depends on the level of productivity in New Zealand relative to the foreign country.

Equation (3.3) again is consistent with both textbook and New Keynesian models. In textbooks, $\beta_\pi=1$; in the Calvo sticky price model, β_π is a little less than 1. In either, β_y is positive. In both textbook and New Keynesian models, the measure of inflation that appears in the Phillips curve is domestic rather than overall inflation π_t . The use of overall inflation is a shortcut that allows me to avoid modeling the pass through of exchange rates to prices. Explicit

modeling of pass through is an important task for future research.

I assume that monetary policy in New Zealand is adequately captured by a Taylor rule with a serially correlated shock u_{mt} :

$$(3.4) \quad i_t = \gamma_\pi \pi_t + \gamma_y y_t + \gamma_q q_t + u_{mt}$$

In (3.4), $\gamma_\pi > 1$, $\gamma_y \geq 0$ and $\gamma_q \geq 0$. The use of actual inflation is for consistency with work at the Reserve Bank (see Drew and Plantier (2000) and Plantier and Scrimgeour (2002)). From a technical point of view, I could proceed if expected inflation were in the monetary policy rule (3.4) as suggested by Huang et al. (2001); whether use of expected inflation generates substantively different results remains to be seen. A similar statement applies to the output gap.

The term in the real exchange rate γ_q is key to this study. To interpret this term, begin by noting that I sidestep altogether any questions about *levels* of variables, to focus on variability. Let me temporarily restore the levels, by rewriting (3.4) as follows:

$$(3.4)' \quad i_t - E_t \pi_{t+1} = \text{natural real interest rate} + (\gamma_\pi - 1)(E_t \pi_{t+1} - \text{inflation target}) + \gamma_y (\log \text{GDP} - \log \text{potential output}) + \gamma_q (q_t - \text{equilibrium value of } q_t) + u_{mt}.$$

We see in (3.4)' that this reaction function, which was also used in Clarida et al. (1998) and Engel and West (2002), allows the monetary authority to lean against the transitory movements in the real exchange rate. The larger is γ_q , then, the more does monetary policy attempt to lean against such transitory movements. (Whether it is reasonable to allow reaction to

contemporaneous real exchange rates is discussed briefly below.) The empirical work proceeds essentially by tracing out how variations in γ_q affect volatility of output, inflation, interest rates and the real exchange rate.

In this empirical work, I abstract altogether from thorny questions about the determinants of the quantities present in (3.4)' but not (3.4) (i.e., the natural real interest rate, inflation target, potential output and equilibrium value of the real exchange rate). The empirical work relies on the Bank's staff to construct potential output and the equilibrium real exchange rate, and assumes the other quantities are constants, set equal to the mean value in the sample. It is technically feasible to use other deterministic models (trends, or step functions, for example) rather than constants, but I did not do so.

The next equation is interest parity (2.3), but written in real form, and with an exogenous risk premium shock u_{rt} :

$$(3.5) \quad i_t - i_t^* - (E_t \pi_{t+1} - E_t \pi_{t+1}^*) = E_t q_{t+1} - q_t + u_{rt}.$$

Equation (3.5) is obtained by subtracting $E_t \pi_{t+1} - E_t \pi_{t+1}^* \equiv E_t p_{t+1} - p_t - (E_t p_{t+1}^* - p_t^*)$ from both sides of (2.3).

Note that the current values of i_t and q_t appear in the monetary rule (3.4) and in interest parity (3.5). The model will be solved under the assumption that the quarterly interest rate can be set to react to the contemporaneous real exchange rate, even while the exchange rate is reacting to interest rate movements. There are at least two reasons why one might find it objectionable to allow the current value of the exchange rate in the monetary policy rule. The

first is one familiar from recent literature on Taylor rules, namely, that data on price levels, which are required to compute a real exchange rate, are not available contemporaneously.

The second reason, which is probably more important for the present study, is that it is questionable that the monetary authority can react to the exchange rate (equation (3.4)) as rapidly as the exchange rate reacts to monetary policy (one interpretation of equation (3.5)). Specifically, with a monetary rule in the form (3.4), it is possible for the monetary authority to achieve very low variability in the real exchange rate by setting γ_q very high relative to γ_π and γ_y . Of course, the same applies to inflation when γ_π is set very high relative to γ_y and γ_q , or to output when γ_y is set very high relative to γ_π and γ_q . But the implication may be tolerable for variables like inflation and output, in that these variables move relatively sluggishly in the intervals between monetary policy decisions. But it is difficult to argue that exchange rates move sluggishly between interest rate decisions. This suggests a bound on the Bank's ability to lower variability in exchange rates, a bound that may not be well captured in a model that (as just stated) allows interest rates to react to exchange rates as rapidly as exchange rates react to interest rates. So for this reason as well the results presented here likely understate the cost of achieving a given reduction in exchange rate volatility.

To return to the model: equations (3.2) -(3.5) are four equations in seven variables: the four New Zealand variables y_t , π_t , i_t and q_t and the three foreign variables y_t^* , π_t^* , and i_t^* . To close the model requires three more equations. I do not attempt to model the three foreign variables, but instead assume simply that they follow exogenous processes:

$$(3.6) \quad y_t^* = u_{yt}^*$$

$$(3.7) \quad \pi_t^* = u_{\pi t}^*$$

$$(3.8) \quad i_t^* = u_{it}^*$$

B. The monetary policy rule and volatility trade-offs

Is there indeed a cost to stabilizing the real exchange rate? Might it be that setting $\gamma_q > 0$ leads to greater stability in not only the real exchange rate but also in output, inflation and interest rates? These questions are prompted by the observation that optimal control typically requires a response to all state variables. So even if the Reserve Bank were interested only in inflation stability, it could in principle achieve greater inflation stability with an interest rate rule that responds not only to output and inflation but also to the real exchange rate. If the inflation stabilizing choice involves a positive γ_q , as assumed above, then the additional term in q_t will be beneficial rather than costly in terms of inflation volatility.

The aim of this paper is to use the data to supply an answer to the questions at the beginning of the preceding paragraph. But in simplified versions of the model, it is possible to answer the question analytically. And even in simplified versions, the answer is: it depends. Whether a monetary rule expanded to include a term $\gamma_q q_t$ lessens or exacerbates volatility in other variables depends on variances of shocks and parameter values. Rather than catalog the dependence exhaustively, let me illustrate with two examples. I worked through both examples in a simplified setting in which all shocks are i.i.d. (not plausible empirically, but tractable analytically). The aim is to distinguish the implications for volatility of the real exchange rate q , output y , inflation π and the interest rate i of $\gamma_q > 0$ vs. $\gamma_q = 0$.

Consider first the response to a positive shock to the risk premium u_{rt} . For both $\gamma_q = 0$ and

for $\gamma_q > 0$, the impact effect of this shock is for q_t , y_t , π_t and i_t to rise. This is intuitive: an increase in exchange rate risk causes the currency to depreciate, which in turn is associated with a rise in output and inflation. For both $\gamma_q = 0$ and $\gamma_q > 0$, the monetary rule (3.4) causes interest rates to rise in response. But for $\gamma_q > 0$, interest rates respond more strongly. The stronger interest response means that, in equilibrium, the responses of q_t , y_t and π_t are less for $\gamma_q > 0$ than for $\gamma_q = 0$. Thus the rule with $\gamma_q > 0$ lessens volatility of y and π (and of course q) but increases volatility of i .

As a second example, consider instead the effect of positive IS shock u_{yt} , interpreted in Galí and Moncaelli (2002) as an increase in productivity in the home country (New Zealand, in the present application) relative to abroad. For both $\gamma_q = 0$ and for $\gamma_q > 0$, q_t falls (appreciation), y_t , π_t and i_t rise. The effects on q_t , y_t and π_t are intuitively expected; the rise in i_t is necessary to maintain interest parity. The equilibrium increase in i_t is less for $\gamma_q > 0$ than for $\gamma_q = 0$ (because q_t falls). So volatility of i_t is lower for $\gamma_q > 0$. Consequently, volatility of y_t and π_t increases.

These two examples illustrate that one cannot tell a priori whether the addition of the term γq_t to the monetary policy rule will lessen or increase volatility of other variables. For the effect on volatility of output, inflation and interest rates is directly opposite for the two shocks:

	Volatility more (+) or less (-) for $\gamma_q > 0$ than for $\gamma_q = 0$?			
	i	y	π	q
Risk premium shock	+	-	-	-
IS shock	-	+	+	-

The volatility of q is unambiguously lessened by including γq_t in the monetary rule. The previous analysis illustrates that whether inclusion of the term lessens or increases volatility of other variables depends on the variances of the shocks and on model parameters. Even in an

i.i.d. world, one would have to turn to data to decide the sign of the change in volatility of output, inflation and interest rates. (N.B.: the point of this subsection is illustration, and *not* development of a complete set of comparative statics results that could be used to interpret the empirical results. In presentation of results, I will have occasion to refer to this subsection only to remind the reader that real exchange rate smoothing may result in either increases or decreases of volatility of other variables.)

C. Model solution and identification

Define the (7×1) vectors X_t and U_t as

$$(3.9) \quad X_t \equiv (y_t, \pi_t, i_t, q_t, y_t^*, \pi_t^*, i_t^*)', \quad U_t \equiv (u_{yt}, u_{\pi t}, u_{it}, u_{rt}, u_{yt}^*, u_{\pi t}^*, u_{it}^*)'.$$

With suitable definitions of (7×7) matrices A_1 and A_0 , the system (3.2)-(3.8) may be written as

$$(3.10) \quad A_1 E_t X_{t+1} + A_0 X_t = U_t.$$

The form of the solution to (3.10) depends on the nature of the shock process U_t . It is easily seen from (3.10), for example, that if U_t is i.i.d., then one solution is X_t i.i.d., with $X_t = A_0^{-1} U_t$ and $E_t X_{t+1} = 0$. Clearly if this model is to pick up serial correlation that is manifest in aggregate data, the shock U_t will have to be serially correlated. An assumption that is technically manageable, and leads to serial correlation in X_t that is roughly what we see in the data, is that U_t follows a vector autoregression of order 1:

$$(3.11) \quad U_t = \Phi U_{t-1} + W_t.$$

Here, Φ is the (7×7) matrix of autoregressive coefficients Φ and W_t is the serially uncorrelated (7×1) vector of innovations in U_t .

It may be shown that (3.10) and (3.11) imply that X_t also follows a vector AR(1), say

$$(3.12) \quad X_t = FX_{t-1} + V_t.$$

Here, F depends on both the parameters of the model embedded in A_0 and A_1 (that is, on α_{y^*} , α_q , β_π , β_y , γ_π , γ_y , γ_q) and the serial correlation parameters Φ ; the serially uncorrelated shock V_t is a linear transformation of the shock vector W_t , with the parameters of the transformation again dependent on both the model parameters and Φ . See the Appendix.

Clearly one can estimate F and the variance-covariance matrix of V_t by least squares. The strategy I take to identify the model is to assume values for the model parameters α_{y^*} , α_q , β_π , β_y , γ_π , γ_y , γ_q , and let the data tell me what values of the serial correlation matrix Φ and the variance-covariance matrix of W_t are consistent with the estimates of F and $EV_t V_t'$. The values I impose on the model parameters are ones that are presumed to apply during the period of estimation. For example, I set the monetary policy parameter γ_q to zero on the thought that exchange rate smoothing has not played a detectable role in New Zealand monetary policy during my sample. At any rate, given the assumed values, one can map the estimates of F and of the variance-covariance matrix of V_t into estimates of Φ and of the variance-covariance matrix of W_t . I allow Φ to be unrestricted—that is, I do not attempt restrictions conventional in calibration

work, such as univariate AR(1) processes for all shocks. My aim is to well-capture the dynamic behavior of the data, recognizing since all the dynamics are in the shocks I provide an accounting but not an economic explanation of the persistence in the data.

I also do not attempt to test for or impose unit roots or cointegrating relations (though this setup in principle allows Φ to have eigenvalues with unit modulus). Rather, I take it as a priori reasonable that the variables here are stationary, though mean reversion might be quite slow.

To trace out the effects of alternative policies to smooth exchange rates, I vary γ_q in (3.4), holding fixed other model parameters and the serial correlation matrix Φ . This allows me to solve for how F and V_t would have varied, had the Reserve Bank of New Zealand followed a policy with alternative parameters. (Formulas are in the Appendix.) To summarize variation in F and V_t , I report implied standard deviations around steady state of New Zealand interest rates, output, inflation and the real exchange rate. My presumption is that if the variations in policy are suitably modest, serial correlation parameters and steady state values can reasonably be held fixed while policy parameters are varied. And similarly for the model parameters in the IS and Phillips curves. By construction, variations in γ_q will not affect standard deviations of foreign variables, since y_t^* , π_t^* and i_t^* by assumption evolve exogenously (equations (3.6)-(3.8)).

4. EMPIRICAL RESULTS

A. Data

The data are quarterly, 1992:1-2002:3. Specific variables (names from the Bank's model or data series given in quotes when applicable) are:

y (NZ output gap: “gap”): the output gap

π (NZ inflation): headline CPI inflation

i (NZ interest rate: “r90d”): 90 day bank bill rate

q (real exchange rate: “z”): five country trade weighted index, constructed with GDP deflators

y^* (foreign output gap: “gaprow”): fourteen country trade weighted output gap

π^* (foreign inflation: “cpirow”): five country trade weighted CPI

i^* (foreign interest rate): five country trade weighted 90 day interest rates

In q , π^* and i^* , the five countries are: Australia, United States, United Kingdom, Germany/Euro area and Japan. In y^* , the fourteen countries are: United States, Japan, Germany, France, United Kingdom, Italy, Canada, Australia, China, Hong Kong, Malaysia, Singapore, South Korea, and Taiwan.

Figure 2 plots the data from 1986-2002, with a vertical line denoting the start of the 1992 sample that I use. Note that the scale in the graphs is different; interest rates i and inflation π generally are higher in New Zealand than in the foreign country (i^* and π^*). Note as well that the exchange rate series is plotted in levels, but appears in logs in the regressions.

The figure suggests that the data are generally slowly mean reverting. Indeed, one reason for beginning the sample in 1992 rather than 1986 was to avoid having to model the downward trend in New Zealand inflation π and interest rates i . But even in the post-1992 sample, the figures suggest that mean reversion has been more honored in the breach than in the observance for some variables, including in particular the foreign interest rate i^* and the New Zealand output

gap y . The empirical work implicitly interprets the seeming trend in these variables as a reflection of a small sample, since this work assumes the data are stationary around a constant mean. Alternative treatments of trends would be desirable, but are not considered in this paper.

B. VAR Results

The estimates of the first order vector autoregression in $(y_t, \pi_t, i_t, q_t, y_t^*, \pi_t^*, i_t^*)'$ is reported in Table 1. Predictably, lagged dependent variables typically earn coefficients that are numerically large and statistically significant, with the peculiar exceptions of inflation π_t and foreign inflation π_t^* . As one would expect, there is more evidence that foreign variables Granger cause New Zealand variables than vice versa: π_t^* Granger causes π_t (t-value of $0.37/0.11 \approx 3.4$) and i_t^* Granger causes i_t (t-value of $0.32/.12 \approx 2.7$). The New Zealand output gap y_t does Granger cause the foreign output gap (t-value of $.09/.04 \approx 2.3$), perhaps a manifestation of what Bank economists have described to me as a tendency for the New Zealand output gap to have led the foreign output gap in recent years. The real exchange rate is statistically significant in the inflation and interest rate equations with numerically small coefficients of 0.05 and -0.02.

Most other coefficients are numerically small and statistically insignificant, suggesting a population value of zero or thereabouts; such zeroes would be rationalized in the model described in section 2 by a particular pattern of zeroes in the matrix Φ (defined in 3.11).

(We do see some nonzero coefficients on variables other than own lags in the equations for the foreign variables y_t^* , π_t^* and i_t^* . To clarify, such nonzero coefficients in the equations for foreign variables are rationalized by multivariate linkages between the various shocks. For example, let us use the estimates in Table 1 and the formulas in the Appendix to construct the equation for the exogenous process for foreign inflation π_t^* (defined in (3.7)). Then the result

happens to be

$$(4.1) \quad u_{\pi t}^* = 0.06u_{y_{t-1}}^* - 0.43u_{\pi_{t-1}}^* - 0.14u_{m_{t-1}}^* + 0.04u_{r_{t-1}}^* + 0.94u_{y_{t-1}}^* - 0.50u_{\pi_{t-1}}^* + 0.62u_{i_{t-1}}^* + w_{\pi t}^*$$

[Standard errors not available.] Unsurprisingly, the large coefficients on $u_{y_{t-1}}^*$ and $u_{i_{t-1}}^*$ are associated with large coefficients on y_{t-1}^* and i_{t-1}^* in the π_t^* equation reported in Table 1.)

C. Effects of alternative monetary policy rules

Alternative values for the parameters α_{y^*} , α_q , α_r , β_π , β_y , γ_π , γ_y , and γ_q are presented in Table 2. My aim is to choose values more or less consistent with the structural models used at the RBNZ. My understanding is that one or more RBNZ models use a within-quarter elasticity of the New Zealand output gap with respect to world output of 1.5, with respect to the real exchange rate of about 0.15—hence the values for α_{y^*} and α_q . These models find it difficult to find a within-quarter effect of the interest rate, but there is some evidence that the elasticity may be as high as 0.5, so I set $\alpha_r=0$ or $\alpha_r=0.5$. (Of course, even with $\alpha_r=0$ monetary policy affects output: given time series for foreign variables y_t^* , π_t^* and i_t^* , equations (3.2)-(3.5) determine the values of y_t , π_t , i_t and q_t simultaneously.) Setting $\beta_\pi=0.99$ is consistent with quarterly calibration of the Calvo model, and, more generally, with a more or less long run vertical Phillips curve. The value $\beta_y=0.1-0.2$ is consistent with my understanding of estimates of the short run slope of the Phillips curve in New Zealand. The monetary policy parameters ($\gamma_\pi=1.5$, $\gamma_y=0.5$ and $\gamma_q=0$) seem, I am told, to do as good a job as any if New Zealand monetary policy is to be described via a Taylor rule (Drew and Plantier (2000) and Plantier and Scrimgeour (2002)).

Panel A of Table 3 reports actual standard deviations of the data. The other panels of

Table 3 report the results of varying γ_q , the reaction coefficient on the real exchange rate in the monetary policy rule (3.4). Panel B reports detailed results for parameter set A. As γ_q increases, the volatility of q of course falls. According to the estimates, if γ_q had been set to 0.07—a value consistent with some of the estimates for G7 countries in Clarida et al. (1998)—the volatility of q would have fallen by 24%, from 10.94 to 8.34. The price paid for a smoother exchange rate is an 11% increase in output volatility (from 1.55 to 1.72), a 2% increase in inflation volatility (from 1.13 to 1.16) and a 18% increase in interest rate volatility (from 1.58 to 1.98). (These are standard deviations centered around steady state values—around long run equilibrium real exchange rate, potential output, target inflation, and average interest rate. And—to repeat an important point already made in the introduction—it is the welfare effects of exchange rate targeting, and not volatility per se, that is the appropriate metric to measure the desirability of targeting.)

To facilitate interpretation, I present results for other specifications when γ_q has been set at a value that decreases volatility of q by about 25%. Results for all three parameter sets are given in Table 3C; the results for parameter set A repeat what is in panel B. The results are broadly consistent across parameter sets.

The results may be contrasted with those of Brook and Stephens (2002) and Lam (2003). Brook and Stephens (2002) use the Reserve Bank’s FPS model to consider the effect of adding to that model’s reaction function a term that smooths real exchange rates. Brook and Stephens do not present standard deviations. But they interpret some impulse responses as suggesting that such smoothing would induce “significantly” greater volatility in inflation, while yielding less volatility in not only real exchange rates but perhaps interest rates as well.

Lam (2003) builds on Hunter (2001) in using a calibrated version of Svensson's (2000) open economy model. His estimates vary widely across specifications. In one set of results (top panel of Table 3 on p10 of Lam (2003)), reducing real exchange rate variability by 15% causes the variability of other variables to skyrocket: the standard deviation of inflation more than triples, that of output increases by 50%, that of the nominal interest rate doubles. (This panel only present results for a reductions in real exchange rate variability of 15% or less.) In two other sets of results (middle and bottom panels of Table 3 on p10 of Lam 2003), reducing real exchange rate variability by 25% causes the standard deviations of inflation and output to increase by perhaps 5-20%, while that of the interest rate falls by about 15-20%. (Recall from the discussion in section 3 that even in this paper's model, an attempt to smooth exchange rates can lessen interest rate volatility as well, depending on the source of shocks.)

These results seem broadly consistent with those presented here, in the sense of suggesting a substantial volatility cost would be paid for smoothing real exchange rates. There is, however, an uncomfortably wide range of results (would interest rates be more or less variable if exchange rates were smoothed?). This underscores the imprecision of our understanding of the terms of the tradeoff between real exchange rate stability and stability of other variables.

5. CONCLUSIONS

The simple model used in this paper delivers rough estimates of the cost of using interest rate policy to smooth real exchange rate movements. The cost is measured in terms of increased volatility of inflation, output and interest rates. Specifically, it is estimated that a 25% fall in the

standard deviation of the real exchange rate can be accomplished at the price of increases in the standard deviations of output of about 10-15%, of inflation volatility by about 0-15% and of interest rate volatility by about 15-40%.

The empirical work abstracts from well-known difficulties with uncovered interest parity, assuming that whatever shocks to interest parity occurred during the sample would have also occurred had the Bank been following an alternative interest rate policy. As well, the model is highly simplified and stylized, for example not distinguishing between domestic and overall inflation. Finally, the model makes assumptions that quite likely lead to an understatement of the cost to the RBNZ of exchange rate stabilization. Specifically, the model assumes that the RBNZ knows the equilibrium value of the real exchange rate, and can react to exchange rate movements as quickly as the exchange rate reacts to interest rate movements. A priority for future research is relaxation of such assumptions. This would lead to higher costs associated with any given level of real exchange rate smoothing.

APPENDIX

This appendix presents formulas linking the reduced form and structural equations.

Those equations are repeated here for convenience:

$$(A.1) \quad \text{Structural equations: } A_1 E_t X_{t+1} + A_0 X_t = U_t, \quad U_t = \Phi U_{t-1} + W_t, \quad E W_t W_t' = \Omega_W,$$

$$(A.2) \quad \text{Reduced form equations: } X_t = F X_{t-1} + V_t, \quad E V_t V_t' = \Omega_V.$$

To solve for reduced form parameter matrix F and shock V_t given the structural parameters A_1, A_0, Φ and Ω_W , guess a solution of the form

$$(A.3) \quad X_t = D U_t,$$

where D is a matrix to be determined. Upon using (A.3) and (A.3) led one period in (A.1), we obtain

$$(A.4) \quad A_1 D \Phi + A_0 = I,$$

which can be used to solve for D . Upon combining (A.2) and (A.3), we see that

$$(A.5) \quad F = D \Phi D^{-1}, \quad V_t = D W_t.$$

To work from the reduced form to the structure: given A_1 and A_0 , whose values are imposed a priori, and least squares estimates \hat{F} and $\hat{\Omega}_V$, the solutions for $\hat{\Phi}$ and $\hat{\Omega}_W$ are:

$$(A.6) \quad \hat{D} = (A_1 \hat{F} + A_0)^{-1}, \quad \hat{\Phi} = \hat{D}^{-1} \hat{F} \hat{D}, \quad \hat{\Omega}_W = \hat{D}^{-1} \hat{\Omega}_V \hat{D}^{-1'}.$$

REFERENCES

- Backus, David K., Silverio Foresi and Chris I. Telmer, 2001, "Affine Term Structure Models and the Forward Premium Anomaly," *Journal of Finance* LVI(1), 279-304.
- Benigno, Gianluca and Pierpaolo Benigno, 2000, "Monetary Policy Rules and the Exchange Rate," manuscript, London School of Economics.
- Brook, Anne-Marie and Dominick Stephens, 2002, "Reducing Exchange Rate Cycles: Are We Prepared to Accept a Wider Range of Inflation Outcomes?," manuscript, Reserve Bank of New Zealand.
- Cheung, Yin-Wong; Menzie D. Chinn; and, Antonio Garcia Pascual, 2002, "Empirical Exchange Rate Models of the Nineties: Are Any Fit to Survive?" mimeo, Department of Economics, University of California B Santa Cruz.
- Clarida, Richard, Jordi Galí and Mark Gertler, 1998, "Monetary Policy Rules in Practice: Some International Evidence," *European Economic Review* 42(6), 1033-1068.
- Clarida, Richard, Jordi Galí and Mark Gertler, 2001, "Optimal Monetary Policy in Open versus Closed Economies: An Integrated Approach," *American Economic Review* 91(2), 248-252.
- Drew, Aaron and L. Christopher Plantier, 2000, "Interest Rate Smoothing in New Zealand and other Dollar Bloc Countries," manuscript, Reserve Bank of New Zealand.
- Elton, Edwin J. and Martin J. Gruber, 1970, "Marginal Stockholder Tax Rates and the Clientele Effect," *Review of Economics and Statistics* 52(1), 68-74.
- Engel, Charles and Kenneth D. West, 2002, "Taylor Rules and the Deutchemark-Dollar Real Exchange Rate," manuscript, University of Wisconsin.
- Galí, Jordi and Monacelli, Tommaso, 2002, "Monetary Policy and Exchange Rate Volatility in a Small Open Economy," manuscript, Boston College.
- Gourinchas, Pierre-Olivier and Aaron Tornell, 2002, "Exchange Rate Dynamics, Learning and Misperception," National Bureau of Economic Research Working Paper No. 2002.
- Huang, Angela, Margaritis, Dimitri and David Mayes, 2001, "Monetary Policy Rules in Practice: Evidence from New Zealand," *Multinational Finance Journal* 5(3), 175-200.
- Hunter, Leni, 2001, "A Small Model of the New Zealand Economy," manuscript, Reserve Bank of New Zealand.
- Kollmann, Robert, 2002, "Monetary Policy Rules in the Open Economy: Effects on Welfare and Business Cycles," *Journal of Monetary Economics* 49(5), 989-1015.

Lam, Zac, 2003, "Exchange Rates in the Central Bank's Loss Function," unpublished manuscript, Reserve Bank of New Zealand.

Lewis, Karen, 1995, "Puzzles in International Financial Markets," 1913-1971 in G. Grossman and K. Rogoff (eds), Handbook of International Economics, vol. III, Amsterdam: Elsevier.

Meese, Richard A., and Kenneth Rogoff, 1983, "Empirical Exchange Rate Models of the Seventies: Do They Fit Out of Sample?," *Journal of International Economics* 14(1), 3-24.

Plantier, L. Christopher and Dean Scrimgeour, 2002, "Estimating a Taylor Rule for New Zealand with a Time Varying Neutral Real Rate," manuscript, Reserve Bank of New Zealand.

Razzak, Weshah A. and Dimitri Margaritis, 2002, "Uncovered Interest Parity: The Puzzle of the U.S. Dollar," manuscript, University of Waikato.

Samuelson, Paul A., 1965, "Proof that Properly Anticipated Prices Fluctuate Randomly," *Industrial Management Review*, 6(2), 41-49.

Svensson, Lars E. O., 2000, "Open Economy Inflation Targeting," *Journal of International Economics* 50(1), 155-183.

Table 1

Estimates of Vector Autoregression

Dependent variable	Regressors							Summary Statistics	
	y_{t-1}	π_{t-1}	i_{t-1}	q_{t-1}	y_{t-1}^*	π_{t-1}^*	i_{t-1}^*	\bar{R}^2	s.e.
y_t	0.96 (0.09)	-0.19 (0.12)	-0.03 (0.11)	0.01 (0.01)	-0.24 (0.20)	0.01 (0.09)	-0.10 (0.13)	0.80	0.70
π_t	0.13 (0.12)	-0.21 (0.15)	0.12 (0.14)	0.05 (0.02)	0.25 (0.25)	0.37 (0.11)	-0.19 (0.16)	0.40	0.88
i_t	0.19 (0.09)	0.07 (0.11)	0.58 (0.10)	-0.02 (0.01)	0.28 (0.19)	0.05 (0.09)	0.32 (0.12)	0.82	0.67
q_t	-1.05 (0.33)	-0.05 (0.42)	-0.36 (0.39)	0.93 (0.05)	2.43 (0.72)	0.50 (0.33)	-0.31 (0.47)	0.95	2.53
y_t^*	0.09 (0.04)	0.04 (0.05)	-0.13 (0.05)	-0.01 (0.01)	0.78 (0.08)	-0.02 (0.04)	0.03 (0.05)	0.83	0.29
π_t^*	0.19 (0.14)	-0.33 (0.18)	-0.13 (0.17)	0.01 (0.02)	1.02 (0.30)	-0.31 (0.14)	0.54 (0.20)	0.35	1.07
i_t^*	0.01 (0.04)	0.16 (0.05)	-0.11 (0.05)	-0.01 (0.01)	0.00 (0.09)	0.05 (0.04)	0.96 (0.06)	0.91	0.32

Notes:

1. The data are quarterly, 1992:II-2002:III.

2. Variable definitions: y =output gap, i =interest rate, π =inflation, q =real exchange rate, “*” denotes foreign variables.

Table 2

Model parameters

	α_{y^*}	α_q	α_r	β_π	β_y	γ_π	γ_y	γ_q
A	1.5	0.15	0.0	.99	0.1	1.5	0.5	0.0
B	1.5	0.15	0.5	.99	0.1	1.5	0.5	0.0
C	1.5	0.15	0.0	.99	0.2	1.5	0.5	0.0

Notes:

1. For variables defined in notes to Table 1, and with “ u ” denoting a shock, the equations of the model are as follows. IS curve: $y_t = \alpha_{y^*} y_t^* + \alpha_q q_t - \alpha_r (i_t - E_t \pi_{t+1}) + u_{yt}$; Phillips curve: $\pi_t = \beta_\pi E_t \pi_{t+1} + \beta_y y_t + u_{\pi t}$; monetary policy: $i_t = \gamma_\pi \pi_t + \gamma_y y_t + \gamma_q q_t + u_{mt}$.

Table 3

Standard Deviations Under Alternative Monetary Policy Parameters, 1992-2002

A. Standard deviations under actual policy

-----Standard deviation of-----				
q	y	π	i	
10.94	1.55	1.13	1.58	

B. Standard deviations under hypothetical alternative policies, parameter set A

Parameter Set	γ_q	-----Standard deviation of-----			
		q	y	π	i
A.	0.00	10.94	1.55	1.13	1.58
	0.01	10.47	1.58	1.13	1.62
	0.05	8.95	1.68	1.14	1.78
	0.07	8.34	1.72	1.16	1.86
	0.10	7.56	1.78	1.19	1.98

C. Cost of Lowering Real Exchange Rate Volatility by About 25%, Alternative Parameter Sets

Parameter Set	γ_q	Percentage increase in standard deviation			
		q	y	π	i
A	0.07	-24	11	2	18
B	0.06	-26	14	3	16
C	0.08	-24	9	13	40

Notes:

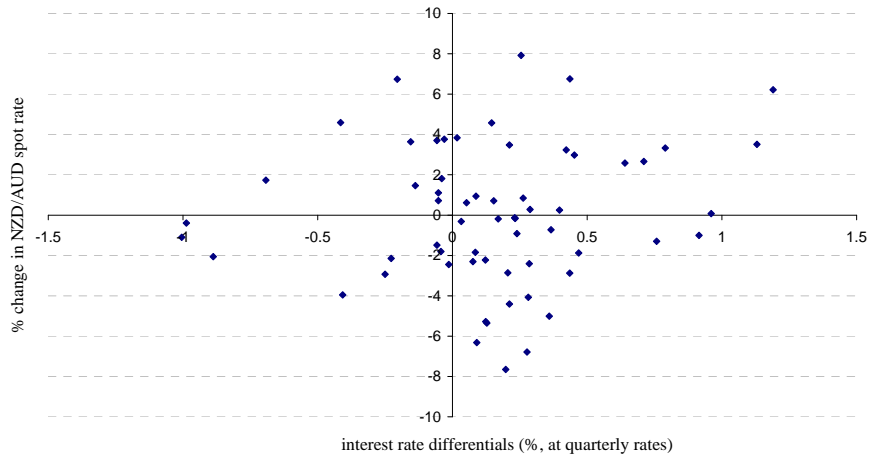
1. Variable definitions are given in Table 1.

2. γ_q is the coefficient on the real exchange rate in the monetary rule (2.4), $i_t = \gamma_\pi \pi_t + \gamma_y y_t + \gamma_q q_t + u_{mt}$. The standard deviations in the $\gamma_q=0$ line of panel B match those in panel A by construction, because it is assumed that during the estimation period, the rule was followed with $\gamma_q=0$.

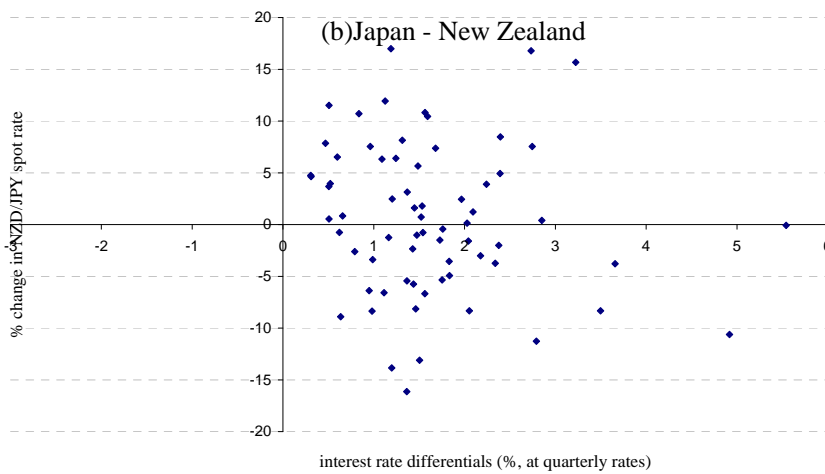
3. The negative sign in the q column in panel 3C means that the volatility of q has fallen.

Figure 1
Interest Differentials vs. Subsequent Changes in Nominal Exchange Rates

(a) Australia - New Zealand



(b) Japan - New Zealand



(c) United States - New Zealand

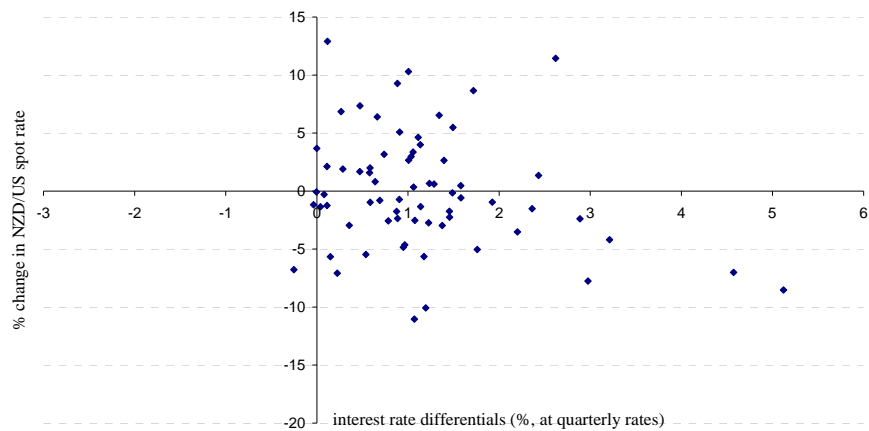


Figure 2: Basic Data

