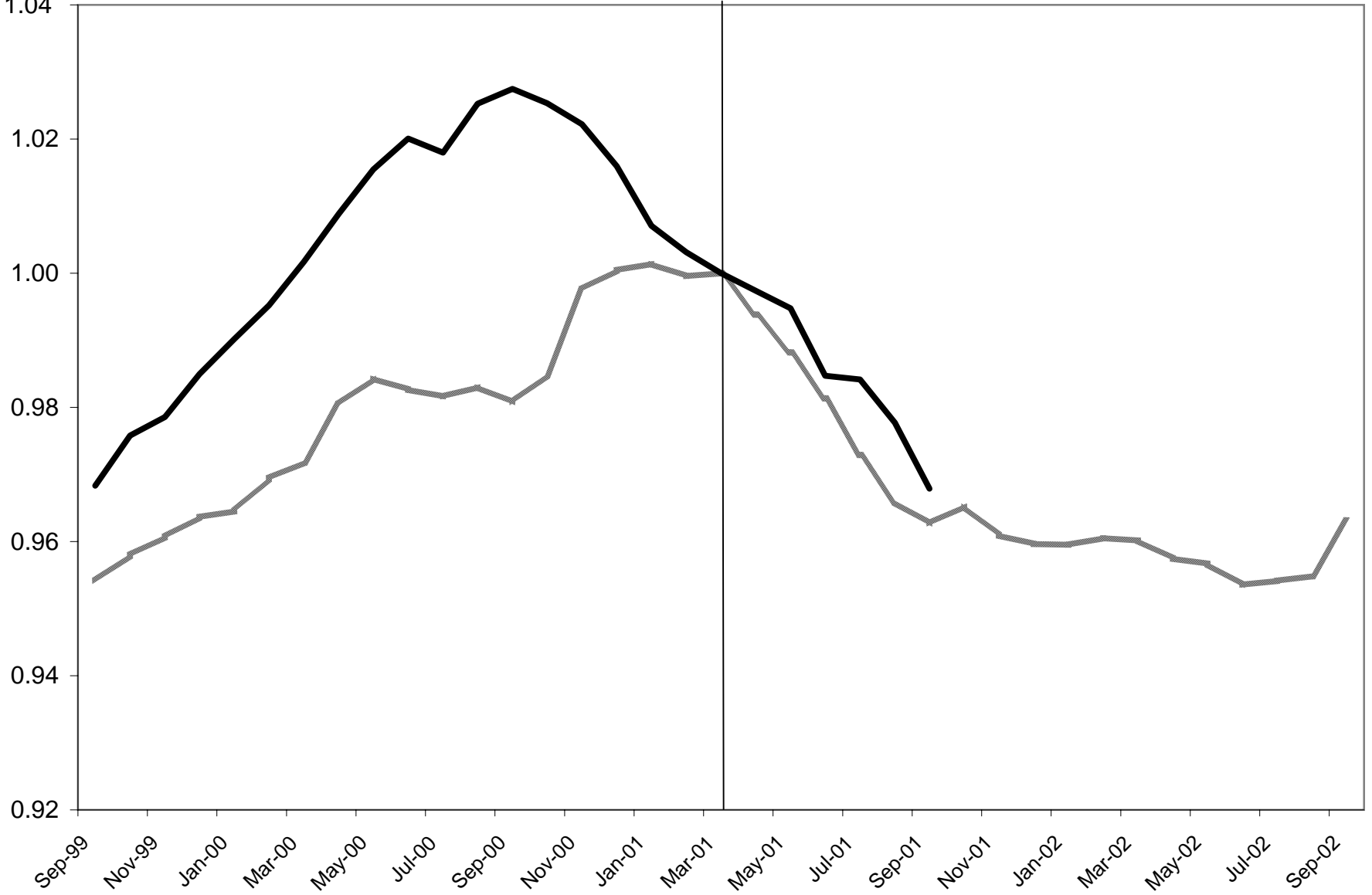
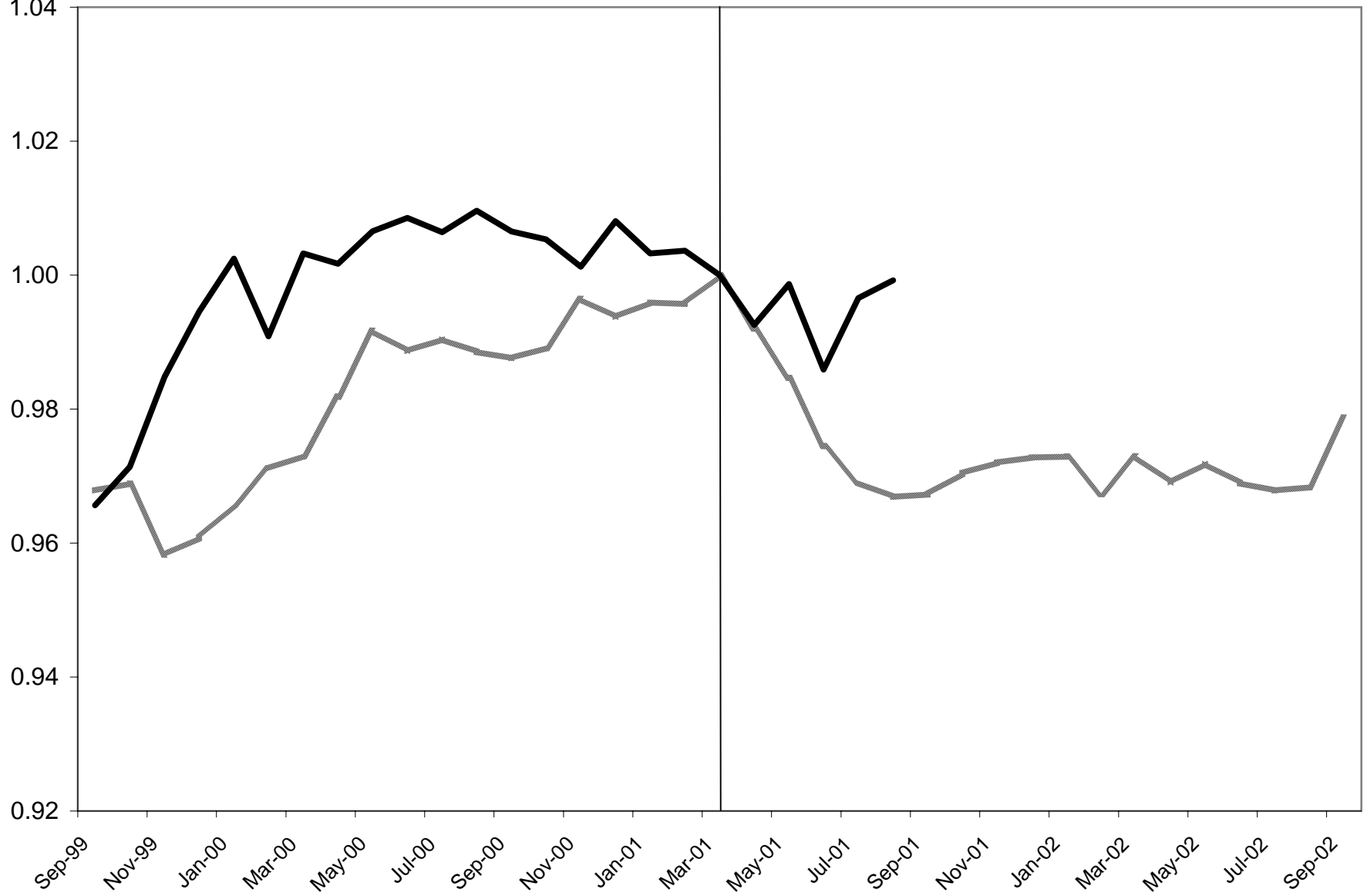


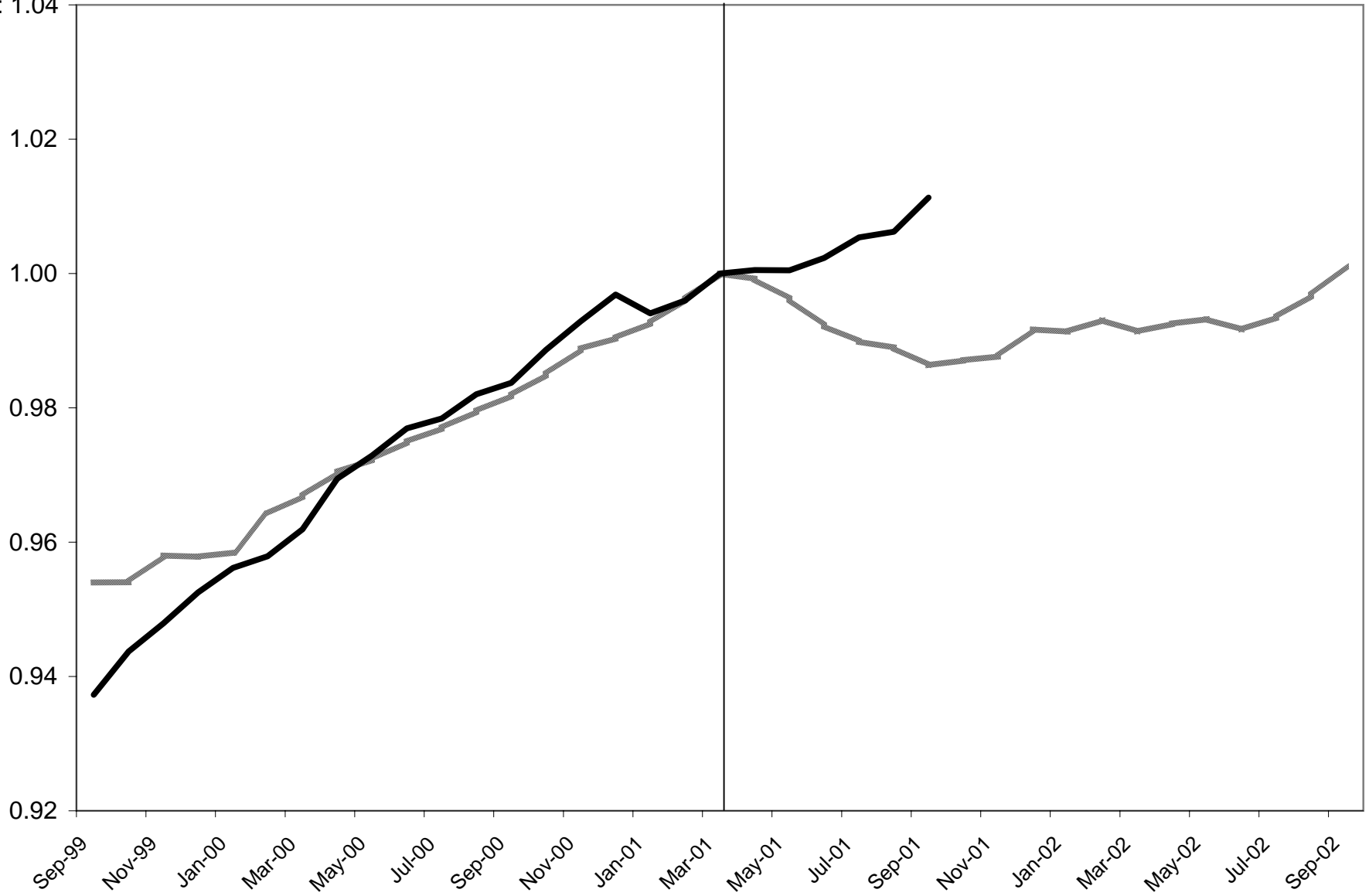
IP: 1.04



Sales: 1.04



Income: 1.04



Data By Peak

Peak		Trough	
1960	4	1961	2
1969	12	1970	11
1973	11	1975	3
1980	1	1980	7
1981	7	1982	11
1990	7	1991	3
2001	3		

	1960-61					1969	
	172				288		
	1	2	3	4	1	2	
	IP	Emp	Trade	Income	IP	Emp	
-18	32.914	51378			58.154	67783	
-17	33.883	51814			58.065	68003	
-16	33.925	51986			58.227	68219	
-15	34.431	52408	208096	1669	58.448	68365	
-14	35.105	52568	211037	1677.9	58.564	68603	
-13	35.611	52883	213685	1692.5	59.321	68855	
-12	36.37	53132	216266	1704.6	59.509	69161	
-11	36.917	53422	219204	1718.1	59.869	69272	
-10	36.96	53584	219908	1724	60.252	69542	
-9	36.075	53663	218391	1720.8	60.724	69791	
-8	34.852	53220	213742	1711.6	60.501	69948	
-7	34.81	53257	213261	1711.4	60.272	70180	
-6	34.557	53196	213431	1713.8	60.861	70498	
-5	34.768	53509	213178	1725.7	61.182	70668	
-4	36.917	54040	219879	1744.6	61.323	70799	
-3	37.887	54185	222747	1753.6	61.309	70833	
-2	37.55	54414	221322	1754.3	61.327	70993	
-1	37.212	54287	219359	1755.3	60.749	70941	
0	36.917	54634	220796	1761	60.586	71127	
1	36.875	54362	216691	1765.1	59.464	71018	
2	36.412	54276	217116	1763.6	59.425	71165	
3	36.285	54214	215763	1764.5	59.348	71347	
4	36.243	54198	215823	1761.8	59.195	71251	
5	35.864	54063	217833	1762.7	59.126	70993	
6	35.822	53982	216412	1768.6	58.935	70905	
7	35.316	53845	215038	1757.7	59.08	70969	
8	34.642	53577	214392	1745.7	58.974	70789	
9	34.684	53534	208995	1760.4	58.568	70857	
10	34.642	53380	210197	1760.3	57.396	70416	
11	34.852	53510	213518	1768.3	57.049	70296	

12	35.569	53462	213113	1774.2	58.359	70666
13	36.117	53677	215618	1783.9	58.808	70718
14	36.622	53916	219597	1799.6	58.696	70657
15	37.044	54027	217915	1804.1	58.632	70746
16	37.381	54222	222896	1812.1	58.961	70936
17	37.339	54285	224417	1816.6	59.26	71129
18	38.055	54376	226539	1836.4	59.509	71163

	IP	Emp	Trade	Income		IP	Emp
-18	0.891568	0.940403				0.959859	0.952986
-17	0.917816	0.948384				0.95839	0.956079
-16	0.918953	0.951532				0.961064	0.959115
-15	0.93266	0.959256	0.942481	0.947757		0.964711	0.961168
-14	0.950917	0.962185	0.955801	0.952811		0.966626	0.964514
-13	0.964623	0.96795	0.967794	0.961102		0.979121	0.968057
-12	0.985183	0.972508	0.979483	0.967973		0.982224	0.972359
-11	1	0.977816	0.99279	0.975639		0.988166	0.97392
-10	1.001165	0.980781	0.995978	0.978989		0.994487	0.977716
-9	0.977192	0.982227	0.989108	0.977172		1.002278	0.981217
-8	0.944064	0.974119	0.968052	0.971948		0.998597	0.983424
-7	0.942926	0.974796	0.965873	0.971834		0.994817	0.986686
-6	0.936073	0.973679	0.966643	0.973197		1.004539	0.991157
-5	0.941788	0.979408	0.965498	0.979955		1.009837	0.993547
-4	1	0.989128	0.995847	0.990687		1.012165	0.995389
-3	1.026275	0.991782	1.008836	0.995798		1.011933	0.995867
-2	1.017147	0.995973	1.002382	0.996195		1.012231	0.998116
-1	1.007991	0.993649	0.993492	0.996763		1.00269	0.997385
0	1	1	1	1		1	1
1	0.998862	0.995021	0.981408	1.002328		0.981481	0.998468
2	0.986321	0.993447	0.983333	1.001476		0.980837	1.000534
3	0.982881	0.992312	0.977205	1.001988		0.979566	1.003093
4	0.981743	0.99202	0.977477	1.000454		0.977041	1.001743
5	0.971477	0.989549	0.98658	1.000965		0.975902	0.998116
6	0.970339	0.988066	0.980145	1.004316		0.972749	0.996879
7	0.956632	0.985558	0.973922	0.998126		0.975143	0.997779
8	0.938375	0.980653	0.970996	0.991312		0.973393	0.995248
9	0.939513	0.979866	0.946552	0.999659		0.966692	0.996204
10	0.938375	0.977047	0.951996	0.999602		0.947348	0.990004
11	0.944064	0.979427	0.967037	1.004145		0.94162	0.988317
12	0.963486	0.978548	0.965203	1.007496		0.963242	0.993519
13	0.97833	0.982483	0.976548	1.013004		0.970653	0.99425
14	0.992009	0.986858	0.99457	1.021919		0.968805	0.993392
15	1.00344	0.98889	0.986952	1.024475		0.967748	0.994643

16	1.012569	0.992459	1.009511	1.029018	0.973179	0.997315
17	1.011431	0.993612	1.0164	1.031573	0.978114	1.000028
18	1.030826	0.995278	1.02601	1.042817	0.982224	1.000506

9-70

1973-75

		335				
3	4	1	2	3	4	4
Trade	Income	IP	Emp	Trade	Income	
324435	2572	64.537	73341	370383	2936.4	
327531	2588.6	64.745	73643	371999	2910.4	
321947	2597.5	64.648	73636	369689	2957.5	
326453	2609.3	65.529	73929	378551	2988.4	
330874	2613.3	66.248	74115	385061	3001.9	
333727	2624.1	67.199	74527	390376	3044.5	
330632	2633.4	68.003	74881	397844	3068.5	
330640	2634.2	68.649	75235	403150	3088.9	
331155	2643.9	68.703	75474	408285	3083.2	
332373	2656.2	69.653	75908	408923	3100.6	
333810	2665.3	69.634	76137	407290	3103.1	
333580	2674.8	69.889	76312	405605	3106	
333389	2683.9	70.185	76516	404305	3127.3	
333483	2698	70.722	76738	403498	3139.2	
337101	2715.7	71.161	76758	408997	3153.2	
338728	2720.7	71.12	77018	400545	3142	
342646	2726.6	71.666	77164	403310	3163.8	
337902	2726.8	71.933	77502	413655	3194.2	
337279	2729.9	71.959	77833	420346	3204.9	
333028	2725.6	70.823	77992	414720	3198.2	
333324	2727.1	69.843	77953	415094	3164.7	
329429	2733.9	69.569	78177	413057	3143.3	
327764	2739.1	69.887	78177	414454	3120.9	
331324	2741	69.757	78261	411433	3102.4	
332651	2735.5	70.573	78407	413244	3110.8	
333006	2749.5	70.792	78434	411802	3114.7	
332852	2756.1	70.465	78517	410860	3125.5	
332274	2755.3	70.219	78478	406875	3109.8	
328817	2732.4	70.511	78498	403428	3103.6	
323298	2729	69.999	78569	396520	3108.1	

333558	2733.7	67.991	78238	392277	3080.1
336826	2762.4	65.164	77565	380778	3063.1
338707	2762.2	63.47	77145	379822	3045.8
340112	2771.8	62.453	76742	377367	3027.1
341962	2779.5	61.343	76419	366032	3024.9
343632	2789.8	61.911	76298	369699	3022.3
348351	2788.2	61.718	76459	369614	3038.4

Trade	Income	IP	Emp	Trade	Income
0.961919	0.942159	0.896858	0.942287	0.881138	0.916222
0.971098	0.94824	0.899748	0.946167	0.884983	0.908109
0.954542	0.9515	0.8984	0.946077	0.879487	0.922806
0.967902	0.955823	0.910644	0.949841	0.90057	0.932447
0.98101	0.957288	0.920635	0.952231	0.916057	0.936659
0.989469	0.961244	0.933851	0.957524	0.928702	0.949952
0.980292	0.964651	0.945024	0.962073	0.946468	0.95744
0.980316	0.964944	0.954002	0.966621	0.959091	0.963805
0.981843	0.968497	0.954752	0.969692	0.971307	0.962027
0.985454	0.973003	0.967954	0.975268	0.972825	0.967456
0.989715	0.976336	0.96769	0.97821	0.96894	0.968236
0.989033	0.979816	0.971234	0.980458	0.964931	0.969141
0.988467	0.98315	0.975347	0.983079	0.961839	0.975787
0.988745	0.988315	0.98281	0.985931	0.959919	0.9795
0.999472	0.994798	0.98891	0.986188	0.973001	0.983868
1.004296	0.99663	0.988341	0.989529	0.952894	0.980374
1.015913	0.998791	0.995928	0.991405	0.959471	0.987176
1.001847	0.998864	0.999639	0.995747	0.984082	0.996661
1	1	1	1	1	1
0.987396	0.998425	0.984213	1.002043	0.986616	0.997909
0.988274	0.998974	0.970594	1.001542	0.987506	0.987457
0.976726	1.001465	0.966787	1.00442	0.98266	0.980779
0.971789	1.00337	0.971206	1.00442	0.985983	0.97379
0.982344	1.004066	0.969399	1.005499	0.978796	0.968018
0.986278	1.002051	0.980739	1.007375	0.983104	0.970639
0.987331	1.00718	0.983782	1.007722	0.979674	0.971856
0.986874	1.009597	0.979238	1.008788	0.977433	0.975225
0.985161	1.009304	0.97582	1.008287	0.967953	0.970327
0.974911	1.000916	0.979877	1.008544	0.959752	0.968392
0.958548	0.99967	0.972762	1.009456	0.943318	0.969796
0.988968	1.001392	0.944857	1.005203	0.933224	0.96106
0.998657	1.011905	0.905571	0.996557	0.905868	0.955755
1.004234	1.011832	0.88203	0.991161	0.903594	0.950357
1.0084	1.015349	0.867897	0.985983	0.897753	0.944522

1.013885 1.018169
1.018836 1.021942
1.032827 1.021356

0.852472 0.981833 0.870787 0.943836
0.860365 0.980278 0.879511 0.943025
0.857683 0.982347 0.879309 0.948048

1980				1981-82			
409					427		
1	2	3	4	5	1	2	3
IP	Emp	Trade	Income		IP	Emp	Trade
80.18	87037	458758	3588.7		81.87	90729	469898
80.379	87324	464741	3606.5		81.933	90876	465478
80.777	87434	463680	3621.6		81.908	90995	454879
81.186	87797	467817	3640.2		80.311	90780	445141
81.651	88249	469844	3652.5		78.322	90316	439442
81.953	88559	472359	3675.5		77.329	89974	438177
81.566	88728	467192	3680.1		76.833	89676	443706
82.181	88985	464984	3694.9		77.734	89964	446904
82.409	89426	478440	3711.6		78.885	90046	456317
81.637	89363	465532	3681.8		79.453	90334	465847
82.58	89681	475838	3686.3		80.735	90550	466157
82.6	89955	470980	3697		81.135	90774	467308
82.001	90019	470384	3699.2		80.436	91003	470153
81.67	90159	471201	3705.8		80.821	91095	468215
81.73	90149	468541	3703.9		81.187	91206	463378
82.07	90360	467141	3724		80.644	91219	463637
81.663	90466	467318	3739.1		81.32	91142	460358
81.491	90617	465953	3752.4		81.83	91285	459143
81.87	90729	469898	3751.6		82.554	91410	460199
81.933	90876	465478	3737.8		82.184	91320	458356
81.908	90995	454879	3719.6		81.519	91191	455203
80.311	90780	445141	3688.2		80.897	91216	449017
78.322	90316	439442	3664.5		79.765	91014	445546
77.329	89974	438177	3665.9		78.87	90831	439778
76.833	89676	443706	3648.8		77.601	90448	437464
77.734	89964	446904	3657.1		79.274	90474	444447
78.885	90046	456317	3668.1		78.72	90337	444802
79.453	90334	465847	3720.9		77.977	90031	445304
80.735	90550	466157	3749.3		77.38	89965	447596
81.135	90774	467308	3772.2		77.121	89703	441250

80.436	91003	470153	3774.3	76.488	89380	439549
80.821	91095	468215	3761	76.084	89177	435519
81.187	91206	463378	3766.4	75.526	88995	436360
80.644	91219	463637	3751.1	74.9	88787	431869
81.32	91142	460358	3759.2	74.701	88649	433045
81.83	91285	459143	3781.5	74.086	88675	431855
82.554	91410	460199	3825	75.666	88826	440096

IP	Emp	Trade	Income	IP	Emp	Trade
0.979358	0.959307	0.976293	0.956579	0.991715	0.99255	1.021076
0.981788	0.962471	0.989025	0.961323	0.992478	0.994158	1.011471
0.98665	0.963683	0.986767	0.965348	0.992175	0.99546	0.98844
0.991645	0.967684	0.995571	0.970306	0.97283	0.993108	0.967279
0.997325	0.972666	0.999885	0.973585	0.948737	0.988032	0.954896
1.001014	0.976083	1.005237	0.979715	0.936708	0.984291	0.952147
0.996287	0.977945	0.994241	0.980941	0.9307	0.981031	0.964161
1.003799	0.980778	0.989542	0.984886	0.941614	0.984181	0.97111
1.006584	0.985639	1.018178	0.989338	0.955556	0.985078	0.991565
0.997154	0.984944	0.990709	0.981395	0.962437	0.988229	1.012273
1.008672	0.988449	1.012641	0.982594	0.977966	0.990592	1.012947
1.008917	0.991469	1.002303	0.985446	0.982811	0.993042	1.015448
1.0016	0.992174	1.001034	0.986033	0.974344	0.995548	1.02163
0.997557	0.993718	1.002773	0.987792	0.979008	0.996554	1.017419
0.99829	0.993607	0.997112	0.987285	0.983441	0.997768	1.006908
1.002443	0.995933	0.994133	0.992643	0.976864	0.997911	1.007471
0.997472	0.997101	0.994509	0.996668	0.985052	0.997068	1.000346
0.995371	0.998766	0.991605	1.000213	0.99123	0.998633	0.997705
1	1	1	1	1	1	1
1.00077	1.00162	0.990594	0.996322	0.995518	0.999015	0.995995
1.000464	1.002932	0.968038	0.99147	0.987463	0.997604	0.989144
0.980958	1.000562	0.947314	0.983101	0.979928	0.997878	0.975702
0.956663	0.995448	0.935186	0.976783	0.966216	0.995668	0.968159
0.944534	0.991679	0.932494	0.977156	0.955375	0.993666	0.955626
0.938476	0.988394	0.94426	0.972598	0.940003	0.989476	0.950597
0.949481	0.991568	0.951066	0.974811	0.960268	0.98976	0.965771
0.96354	0.992472	0.971098	0.977743	0.953558	0.988262	0.966543
0.970478	0.995646	0.991379	0.991817	0.944558	0.984914	0.967634
0.986137	0.998027	0.992039	0.999387	0.937326	0.984192	0.972614
0.991022	1.000496	0.994488	1.005491	0.934189	0.981326	0.958824
0.982484	1.00302	1.000543	1.006051	0.926521	0.977792	0.955128
0.987187	1.004034	0.996418	1.002506	0.921627	0.975572	0.946371
0.991658	1.005257	0.986125	1.003945	0.914868	0.973581	0.948198
0.985025	1.005401	0.986676	0.999867	0.907285	0.971305	0.93844

0.993282	1.004552	0.979698	1.002026
0.999511	1.006128	0.977112	1.00797
1.008355	1.007506	0.979359	1.019565

0.904874	0.969795	0.940995
0.897425	0.97008	0.938409
0.916564	0.971732	0.956317

1990-91							
		535					663
4		1	2	3	4		1
Income	6	IP	Emp	Trade	Income	7	IP
3751.6		99.827	106993	596857	4944.6		140.392
3737.8		99.038	107244	590334	4949.4		141.481
3719.6		99.968	107438	586820	4963.1		141.879
3688.2		100.213	107637	592172	4955.6		142.808
3664.5		99.583	107738	589532	4934.4		143.569
3665.9		99.407	107838	587714	4947.6		144.291
3648.8		98.424	107933	581686	4954.1		145.234
3657.1		98.824	108048	596452	4959.1		146.266
3668.1		98.623	108178	592273	4952.8		147.228
3720.9		98.171	108290	586555	4962.2		147.896
3749.3		98.56	108571	591801	4986.8		147.595
3772.2		99.032	108692	593757	4995.9		148.65
3774.3		98.572	108946	589119	5004.8		148.973
3761		99.081	109263	597872	5029.6		148.66
3766.4		99.559	109461	601356	5031.3		148.206
3751.1		98.959	109499	594426	5055.9		147.3
3759.2		99.35	109790	599256	5045.7		146.013
3781.5		99.33	109869	600805	5054.1		145.443
3825		99.284	109707	597586	5075.2		144.987
3844.2		99.477	109543	603597	5050		144.607
3840		99.613	109457	592499	5044.6		144.227
3830.3		99.064	109274	589958	4997.6		142.771
3826.9		97.748	109074	582984	4995.3		142.689
3817.3		97.171	108965	576916	5001.2		141.754
3801.4		96.693	108759	573114	4946.3		140.33
3810.3		95.929	108500	576506	4945.2		
3811.9		95.046	108330	573173	4950.4		
3830.9		95.379	108145	584467	4960.8		
3835.5		96.12	108107	589261	4958.2		
3812.8		97.244	108200	586622	4986.7		

3797	97.321	108131	594279	4971.1	
3795.8	97.445	108215	591775	4971.5	
3786.1	98.375	108223	594306	4981.3	
3781	98.28	108209	594906	4958.9	
3781.9	98.143	108115	592980	4969.6	
3794.6	97.51	108121	585431	4993.9	
3792.9	97.613	108084	596771	4991.6	1.027492

Income	IP	Emp	Trade	Income		IP
0.98081	1.005469	0.975261	0.99878	0.974267	Sep-99	0.968308
0.977203	0.997522	0.977549	0.987865	0.975213	Oct-99	0.975819
0.972444	1.006889	0.979318	0.981984	0.977912	Nov-99	0.978564
0.964235	1.009357	0.981132	0.99094	0.976434	Dec-99	0.984971
0.958039	1.003012	0.982052	0.986522	0.972257	Jan-00	0.99022
0.958405	1.001239	0.982964	0.98348	0.974858	Feb-00	0.9952
0.953935	0.991338	0.98383	0.973393	0.976139	Mar-00	1.001704
0.956105	0.995367	0.984878	0.998102	0.977124	Apr-00	1.008821
0.95898	0.993342	0.986063	0.991109	0.975883	May-00	1.015457
0.972784	0.98879	0.987084	0.981541	0.977735	Jun-00	1.020064
0.980209	0.992708	0.989645	0.990319	0.982582	Jul-00	1.017988
0.986196	0.997462	0.990748	0.993593	0.984375	Aug-00	1.025264
0.986745	0.992829	0.993063	0.985831	0.986129	Sep-00	1.027492
0.983268	0.997955	0.995953	1.000479	0.991015	Oct-00	1.025333
0.98468	1.00277	0.997758	1.006309	0.99135	Nov-00	1.022202
0.98068	0.996727	0.998104	0.994712	0.996197	Dec-00	1.015953
0.982797	1.000665	1.000757	1.002795	0.994187	Jan-01	1.007076
0.988627	1.000463	1.001477	1.005387	0.995843	Feb-01	1.003145
1	1	1	1	1	Mar-01	1
1.00502	1.001944	0.998505	1.010059	0.995035	Apr-01	0.997379
1.003922	1.003314	0.997721	0.991487	0.993971	May-01	0.994758
1.001386	0.997784	0.996053	0.987235	0.98471	Jun-01	0.984716
1.000497	0.984529	0.99423	0.975565	0.984257	Jul-01	0.98415
0.997987	0.978718	0.993237	0.965411	0.985419	Aug-01	0.977701
0.99383	0.973903	0.991359	0.959049	0.974602	Sep-01	0.96788
0.996157	0.966208	0.988998	0.964725	0.974385	Oct-01	
0.996575	0.957314	0.987448	0.959147	0.97541	Nov-01	
1.001542	0.960668	0.985762	0.978047	0.977459	Dec-01	
1.002745	0.968132	0.985416	0.986069	0.976947	Jan-02	
0.99681	0.979453	0.986263	0.981653	0.982562	Feb-02	
0.99268	0.980228	0.985634	0.994466	0.979488	Mar-02	
0.992366	0.981477	0.9864	0.990276	0.979567	Apr-02	
0.98983	0.990844	0.986473	0.994511	0.981498	May-02	
0.988497	0.989888	0.986345	0.995515	0.977085	Jun-02	

0.988732	0.988508	0.985489	0.992292	0.979193	Jul-02
0.992052	0.982132	0.985543	0.97966	0.983981	Aug-02
0.991608	0.983169	0.985206	0.998636	0.983528	Sep-02

2001-

2	3	4
Emp	Trade	Income
129410	822904	6471.4
129863	827808	6515.9
130093	839259	6545
130365	847549	6576.6
130668	854291	6601.8
130843	844396	6613.7
131441	854938	6641.5
131683	853618	6693.7
131909	857758	6717.3
131969	859468	6745.2
131899	857657	6755.6
131837	860389	6780.5
132046	857751	6792.2
132145	856748	6825.9
132279	853255	6855.5
132367	859045	6883
132428	854960	6863.6
132595	855289	6876.9
132654	852185	6904.5
132489	845838	6908
132530	851040	6907.9
132431	840153	6920.6
132449	849281	6941.6
132395	851524	6947.6
132182		6982.7
131767		

1 1.009627 1.011326

			Average			
Emp	Trade	Income	IP	Emp	Trade	Income
0.975545	0.96564	0.937273	0.954138	0.960466	0.967841	0.954007
0.97896	0.971395	0.943718	0.957957	0.964135	0.968888	0.954018
0.980694	0.984832	0.947933	0.960689	0.965864	0.958244	0.958002
0.982745	0.99456	0.952509	0.963641	0.968698	0.960791	0.957834
0.985029	1.002471	0.956159	0.964542	0.97028	0.965695	0.95844
0.986348	0.99086	0.957883	0.969426	0.972811	0.971138	0.964213
0.990856	1.003231	0.961909	0.971793	0.974958	0.973006	0.966846
0.99268	1.001682	0.969469	0.980491	0.978032	0.981825	0.970417
0.994384	1.00654	0.972887	0.984314	0.980828	0.991663	0.972286
0.994836	1.008546	0.976928	0.982634	0.983161	0.988651	0.974924
0.994309	1.006421	0.978434	0.981616	0.984073	0.990436	0.976984
0.993841	1.009627	0.982041	0.983028	0.9862	0.98853	0.979468
0.995417	1.006531	0.983735	0.980789	0.988117	0.987574	0.98184
0.996163	1.005354	0.988616	0.984826	0.990852	0.989139	0.984974
0.997173	1.001256	0.992903	0.997596	0.993306	0.996441	0.988778
0.997836	1.00805	0.996886	1.00043	0.994854	0.993724	0.990387
0.998296	1.003256	0.994076	1.001416	0.996737	0.995903	0.992636
0.999555	1.003642	0.996003	0.999564	0.997609	0.995686	0.996162
1	1	1	1	1	1	1
0.998756	0.992552	1.000507	0.993798	0.999112	0.992011	0.999173
0.999065	0.998656	1.000492	0.988165	0.998963	0.98463	0.996212
0.998319	0.985881	1.002332	0.981317	0.999053	0.974474	0.992238
0.998455	0.996592	1.005373	0.9729	0.997255	0.969027	0.989859
0.998048	0.999224	1.006242	0.965901	0.995291	0.966875	0.988935
0.996442		1.011326	0.962702	0.993591	0.967239	0.986339
0.993313			0.965253	0.993564	0.970415	0.987086
			0.960903	0.992145	0.972015	0.987644
			0.959621	0.99178	0.972787	0.991685
			0.959532	0.990538	0.972897	0.991332
			0.960518	0.990881	0.967311	0.993079
			0.960137	0.99062	0.972922	0.991361
			0.957474	0.989883	0.969023	0.992517
			0.956702	0.989454	0.971872	0.99323
			0.953547	0.988761	0.968956	0.991632

0.954147	0.988574	0.967861	0.993496
0.95483	0.989278	0.968321	0.996757
0.963137	0.990429	0.978743	1.001154

Complete Historical Data, Sources:

Employment: <http://stats.bls.gov/ces/home.htm> series EES00000001, Total Nonfarm Employment - Seasonally Adjusted

Industrial production: <http://www.federalreserve.gov/releases/G17/table2a.htm>

Manufacturing and trade sales: Table A0M057 (Manufacturing and trade sales - mil. Chain 1996\$) from globalindicators.org/US/Data/bci.01b.cfm

Income: Personal income less transfer payments, billions of 1996 dollars, <http://www.globalindicators.org>

Year	Month	Obs	IP	Emp	Sales	Income
1946	1	1	17.827	39721		
1946	2	2	16.942	39193		
1946	3	3	18.712	40183		
1946	4	4	18.374	40858		
1946	5	5	17.7	41248		
1946	6	6	18.796	41551		
1946	7	7	19.428	41955		
1946	8	8	20.144	42466		
1946	9	9	20.524	42749		
1946	10	10	20.903	42959		
1946	11	11	21.029	43229		
1946	12	12	21.156	43314		
1947	1	13	21.409	43497		
1947	2	14	21.535	43578		
1947	3	15	21.662	43621		
1947	4	16	21.493	43501		
1947	5	17	21.577	43544		
1947	6	18	21.577	43685		
1947	7	19	21.451	43682		
1947	8	20	21.577	43784		
1947	9	21	21.746	44001		
1947	10	22	21.957	44176		
1947	11	23	22.252	44313		
1947	12	24	22.336	44519		
1948	1	25	22.462	44667		
1948	2	26	22.504	44501		
1948	3	27	22.252	44624		

1948	4	28	22.294	44293
1948	5	29	22.673	44647
1948	6	30	22.968	44879
1948	7	31	22.968	45062
1948	8	32	22.884	45039
1948	9	33	22.715	45162
1948	10	34	22.884	45065
1948	11	35	22.589	45069
1948	12	36	22.378	45022
1949	1	37	22.167	44624
1949	2	38	21.957	44417
1949	3	39	21.535	44136
1949	4	40	21.409	44112
1949	5	41	21.114	43814
1949	6	42	21.072	43592
1949	7	43	21.029	43418
1949	8	44	21.24	43479
1949	9	45	21.451	43699
1949	10	46	20.65	42805
1949	11	47	21.198	43142
1949	12	48	21.577	43491
1950	1	49	21.957	43469
1950	2	50	22.041	43192
1950	3	51	22.757	43824
1950	4	52	23.516	44260
1950	5	53	24.064	44574
1950	6	54	24.78	44952
1950	7	55	25.581	45360
1950	8	56	26.382	46024
1950	9	57	26.213	46301
1950	10	58	26.382	46528
1950	11	59	26.34	46653
1950	12	60	26.803	46752
1951	1	61	26.887	47230
1951	2	62	27.056	47531
1951	3	63	27.182	47794
1951	4	64	27.225	47760
1951	5	65	27.14	47805
1951	6	66	27.014	47913
1951	7	67	26.592	47925
1951	8	68	26.34	47794
1951	9	69	26.508	47748
1951	10	70	26.466	47825

1951	11	71	26.677	48027
1951	12	72	26.845	48122
1952	1	73	27.14	48227
1952	2	74	27.309	48493
1952	3	75	27.393	48416
1952	4	76	27.14	48509
1952	5	77	26.887	48474
1952	6	78	26.634	48125
1952	7	79	26.213	47999
1952	8	80	27.899	48686
1952	9	81	28.91	49085
1952	10	82	29.205	49434
1952	11	83	29.795	49719
1952	12	84	29.964	49937
1953	1	85	30.048	50045
1953	2	86	30.217	50273
1953	3	87	30.47	50382
1953	4	88	30.596	50314
1953	5	89	30.765	50358
1953	6	90	30.638	50389
1953	7	91	31.017	50382
1953	8	92	30.849	50271
1953	9	93	30.217	50226
1953	10	94	29.964	50108
1953	11	95	29.247	49825
1953	12	96	28.531	49625
1954	1	97	28.32	49341
1954	2	98	28.405	49276
1954	3	99	28.236	49046
1954	4	100	28.067	49039
1954	5	101	28.236	48852
1954	6	102	28.32	48791
1954	7	103	28.362	48689
1954	8	104	28.32	48643
1954	9	105	28.362	48765
1954	10	106	28.7	48828
1954	11	107	29.163	49103
1954	12	108	29.542	49234
1955	1	109	30.217	49354
1955	2	110	30.596	49523
1955	3	111	31.312	49851
1955	4	112	31.692	50104
1955	5	113	32.197	50404

1955	6	114	32.24	50693
1955	7	115	32.492	50811
1955	8	116	32.45	50929
1955	9	117	32.661	51103
1955	10	118	33.209	51323
1955	11	119	33.293	51507
1955	12	120	33.42	51714
1956	1	121	33.63	51863
1956	2	122	33.335	52093
1956	3	123	33.335	52228
1956	4	124	33.588	52232
1956	5	125	33.293	52365
1956	6	126	32.998	52433
1956	7	127	31.987	51746
1956	8	128	33.293	52382
1956	9	129	34.052	52439
1956	10	130	34.347	52674
1956	11	131	34.052	52752
1956	12	132	34.557	52908
1957	1	133	34.431	52808
1957	2	134	34.768	53003
1957	3	135	34.726	53062
1957	4	136	34.262	53053
1957	5	137	34.136	52996
1957	6	138	34.22	52941
1957	7	139	34.431	52972
1957	8	140	34.431	52913
1957	9	141	34.136	52816
1957	10	142	33.63	52663
1957	11	143	32.83	52482
1957	12	144	32.197	52307
1958	1	145	31.607	52003
1958	2	146	30.933	51441
1958	3	147	30.554	51142
1958	4	148	30.048	50807
1958	5	149	30.343	50770
1958	6	150	31.144	50801
1958	7	151	31.607	50911
1958	8	152	32.24	51113
1958	9	153	32.535	51355
1958	10	154	32.914	51378
1958	11	155	33.883	51814
1958	12	156	33.925	51986

1959	1	157	34.431	52408	208096	1669
1959	2	158	35.105	52568	211037	1677.9
1959	3	159	35.611	52883	213685	1692.5
1959	4	160	36.37	53132	216266	1704.6
1959	5	161	36.917	53422	219204	1718.1
1959	6	162	36.96	53584	219908	1724
1959	7	163	36.075	53663	218391	1720.8
1959	8	164	34.852	53220	213742	1711.6
1959	9	165	34.81	53257	213261	1711.4
1959	10	166	34.557	53196	213431	1713.8
1959	11	167	34.768	53509	213178	1725.7
1959	12	168	36.917	54040	219879	1744.6
1960	1	169	37.887	54185	222747	1753.6
1960	2	170	37.55	54414	221322	1754.3
1960	3	171	37.212	54287	219359	1755.3
1960	4	172	36.917	54634	220796	1761
1960	5	173	36.875	54362	216691	1765.1
1960	6	174	36.412	54276	217116	1763.6
1960	7	175	36.285	54214	215763	1764.5
1960	8	176	36.243	54198	215823	1761.8
1960	9	177	35.864	54063	217833	1762.7
1960	10	178	35.822	53982	216412	1768.6
1960	11	179	35.316	53845	215038	1757.7
1960	12	180	34.642	53577	214392	1745.7
1961	1	181	34.684	53534	208995	1760.4
1961	2	182	34.642	53380	210197	1760.3
1961	3	183	34.852	53510	213518	1768.3
1961	4	184	35.569	53462	213113	1774.2
1961	5	185	36.117	53677	215618	1783.9
1961	6	186	36.622	53916	219597	1799.6
1961	7	187	37.044	54027	217915	1804.1
1961	8	188	37.381	54222	222896	1812.1
1961	9	189	37.339	54285	224417	1816.6
1961	10	190	38.055	54376	226539	1836.4
1961	11	191	38.645	54622	229691	1854.3
1961	12	192	38.982	54744	230859	1863.2
1962	1	193	38.645	54709	230804	1857
1962	2	194	39.277	55018	230443	1866.7
1962	3	195	39.488	55107	233980	1879.4
1962	4	196	39.572	55459	234209	1891.5
1962	5	197	39.53	55514	234597	1894.9
1962	6	198	39.446	55561	234181	1900.8
1962	7	199	39.825	55643	234435	1909.9

1962	8	200	39.867	55778	235555	1911.8
1962	9	201	40.12	55849	236167	1914.2
1962	10	202	40.162	55912	237736	1917.9
1962	11	203	40.331	55936	241304	1928.8
1962	12	204	40.331	55918	237272	1937.9
1963	1	205	40.626	55935	238737	1931.2
1963	2	206	41.09	56055	243203	1935.8
1963	3	207	41.343	56153	244085	1944.5
1963	4	208	41.722	56454	246581	1951.2
1963	5	209	42.228	56513	244740	1959.4
1963	6	210	42.354	56563	247666	1971.7
1963	7	211	42.185	56688	250509	1972.6
1963	8	212	42.27	56823	247739	1980.8
1963	9	213	42.691	56962	248722	1994.2
1963	10	214	42.986	57152	251942	2006.5
1963	11	215	43.197	57126	250112	2010
1963	12	216	43.112	57252	254128	2025
1964	1	217	43.492	57269	256664	2025.6
1964	2	218	43.787	57603	257396	2043
1964	3	219	43.787	57732	255743	2052.1
1964	4	220	44.503	57784	259700	2064.2
1964	5	221	44.756	57975	262674	2077.4
1964	6	222	44.883	58121	261992	2086.8
1964	7	223	45.178	58311	264513	2096.8
1964	8	224	45.473	58510	263902	2113.3
1964	9	225	45.641	58798	267737	2122.6
1964	10	226	45.009	58691	263253	2125.5
1964	11	227	46.4	59114	265805	2139.2
1964	12	228	46.948	59335	274134	2159.3
1965	1	229	47.453	59398	274522	2160.3
1965	2	230	47.748	59683	273760	2170.9
1965	3	231	48.38	59864	279945	2180.9
1965	4	232	48.591	60124	280876	2190.8
1965	5	233	48.97	60363	279032	2204.9
1965	6	234	49.35	60595	278768	2211.7
1965	7	235	49.813	60860	283154	2225.9
1965	8	236	50.024	61085	283437	2237.7
1965	9	237	50.15	61367	279733	2255.9
1965	10	238	50.656	61578	287210	2280
1965	11	239	50.867	61882	291338	2297
1965	12	240	51.499	62230	293238	2308.8
1966	1	241	52.005	62386	296481	2312.8
1966	2	242	52.342	62720	296138	2322.6

1966	3	243	53.058	63087	301542	2333.2
1966	4	244	53.143	63317	299421	2333.9
1966	5	245	53.648	63560	296521	2341.8
1966	6	246	53.901	63978	300802	2356.6
1966	7	247	54.196	64185	297076	2368.3
1966	8	248	54.238	64344	298976	2375.5
1966	9	249	54.744	64433	300599	2381.4
1966	10	250	55.123	64655	302266	2392.9
1966	11	251	54.744	64854	300215	2401.7
1966	12	252	54.87	65076	302811	2397.8
1967	1	253	55.129	65215	303255	2419
1967	2	254	54.504	65208	302091	2417.5
1967	3	255	54.197	65338	304279	2426.6
1967	4	256	54.708	65323	304080	2427.1
1967	5	257	54.231	65478	303831	2430.8
1967	6	258	54.224	65654	306088	2440.3
1967	7	259	54.1	65831	304110	2452.1
1967	8	260	55.137	65964	308195	2462.1
1967	9	261	55.047	66089	309283	2464.4
1967	10	262	55.496	66111	307137	2461
1967	11	263	56.289	66591	315410	2475.3
1967	12	264	56.896	66776	322423	2499.7
1968	1	265	56.834	66606	319189	2502.4
1968	2	266	57.038	67029	318183	2522.5
1968	3	267	57.216	67132	320551	2535.2
1968	4	268	57.299	67417	319915	2544.9
1968	5	269	57.942	67495	322157	2560.1
1968	6	270	58.154	67783	324435	2572
1968	7	271	58.065	68003	327531	2588.6
1968	8	272	58.227	68219	321947	2597.5
1968	9	273	58.448	68365	326453	2609.3
1968	10	274	58.564	68603	330874	2613.3
1968	11	275	59.321	68855	333727	2624.1
1968	12	276	59.509	69161	330632	2633.4
1969	1	277	59.869	69272	330640	2634.2
1969	2	278	60.252	69542	331155	2643.9
1969	3	279	60.724	69791	332373	2656.2
1969	4	280	60.501	69948	333810	2665.3
1969	5	281	60.272	70180	333580	2674.8
1969	6	282	60.861	70498	333389	2683.9
1969	7	283	61.182	70668	333483	2698
1969	8	284	61.323	70799	337101	2715.7
1969	9	285	61.309	70833	338728	2720.7

1969	10	286	61.327	70993	342646	2726.6
1969	11	287	60.749	70941	337902	2726.8
1969	12	288	60.586	71127	337279	2729.9
1970	1	289	59.464	71018	333028	2725.6
1970	2	290	59.425	71165	333324	2727.1
1970	3	291	59.348	71347	329429	2733.9
1970	4	292	59.195	71251	327764	2739.1
1970	5	293	59.126	70993	331324	2741
1970	6	294	58.935	70905	332651	2735.5
1970	7	295	59.08	70969	333006	2749.5
1970	8	296	58.974	70789	332852	2756.1
1970	9	297	58.568	70857	332274	2755.3
1970	10	298	57.396	70416	328817	2732.4
1970	11	299	57.049	70296	323298	2729
1970	12	300	58.359	70666	333558	2733.7
1971	1	301	58.808	70718	336826	2762.4
1971	2	302	58.696	70657	338707	2762.2
1971	3	303	58.632	70746	340112	2771.8
1971	4	304	58.961	70936	341962	2779.5
1971	5	305	59.26	71129	343632	2789.8
1971	6	306	59.509	71163	348351	2788.2
1971	7	307	59.336	71219	344339	2789.9
1971	8	308	58.992	71220	346503	2805.4
1971	9	309	59.951	71527	349623	2808.1
1971	10	310	60.399	71532	349865	2817.5
1971	11	311	60.656	71734	355780	2832.2
1971	12	312	61.356	71996	359102	2855.4
1972	1	313	62.719	72303	362898	2873.2
1972	2	314	63.15	72525	358981	2887.7
1972	3	315	63.67	72808	365632	2903.1
1972	4	316	64.689	73061	368116	2924.4
1972	5	317	64.537	73341	370383	2936.4
1972	6	318	64.745	73643	371999	2910.4
1972	7	319	64.648	73636	369689	2957.5
1972	8	320	65.529	73929	378551	2988.4
1972	9	321	66.248	74115	385061	3001.9
1972	10	322	67.199	74527	390376	3044.5
1972	11	323	68.003	74881	397844	3068.5
1972	12	324	68.649	75235	403150	3088.9
1973	1	325	68.703	75474	408285	3083.2
1973	2	326	69.653	75908	408923	3100.6
1973	3	327	69.634	76137	407290	3103.1
1973	4	328	69.889	76312	405605	3106

1973	5	329	70.185	76516	404305	3127.3
1973	6	330	70.722	76738	403498	3139.2
1973	7	331	71.161	76758	408997	3153.2
1973	8	332	71.12	77018	400545	3142
1973	9	333	71.666	77164	403310	3163.8
1973	10	334	71.933	77502	413655	3194.2
1973	11	335	71.959	77833	420346	3204.9
1973	12	336	70.823	77992	414720	3198.2
1974	1	337	69.843	77953	415094	3164.7
1974	2	338	69.569	78177	413057	3143.3
1974	3	339	69.887	78177	414454	3120.9
1974	4	340	69.757	78261	411433	3102.4
1974	5	341	70.573	78407	413244	3110.8
1974	6	342	70.792	78434	411802	3114.7
1974	7	343	70.465	78517	410860	3125.5
1974	8	344	70.219	78478	406875	3109.8
1974	9	345	70.511	78498	403428	3103.6
1974	10	346	69.999	78569	396520	3108.1
1974	11	347	67.991	78238	392277	3080.1
1974	12	348	65.164	77565	380778	3063.1
1975	1	349	63.47	77145	379822	3045.8
1975	2	350	62.453	76742	377367	3027.1
1975	3	351	61.343	76419	366032	3024.9
1975	4	352	61.911	76298	369699	3022.3
1975	5	353	61.718	76459	369614	3038.4
1975	6	354	62.522	76388	372937	3044.6
1975	7	355	62.889	76626	374789	3047.6
1975	8	356	64.009	76980	379186	3075.7
1975	9	357	64.674	77188	380094	3088
1975	10	358	64.991	77499	380558	3103.3
1975	11	359	65.602	77619	380000	3114.3
1975	12	360	66.133	77915	384025	3117.4
1976	1	361	66.848	78326	393533	3143.8
1976	2	362	68.036	78606	395261	3168.1
1976	3	363	67.869	78819	398249	3185.2
1976	4	364	68.133	79134	400154	3205.5
1976	5	365	68.911	79192	399712	3218.3
1976	6	366	68.957	79258	404625	3218.8
1976	7	367	69.363	79485	404907	3234.2
1976	8	368	69.76	79581	406306	3246.7
1976	9	369	69.987	79842	407482	3252.9
1976	10	370	70.226	79842	402674	3255
1976	11	371	71.396	80141	409369	3284.6

1976	12	372	71.965	80338	419974	3295.7
1977	1	373	72.362	80517	417235	3294.9
1977	2	374	72.415	80794	422908	3307.1
1977	3	375	73.256	81221	428024	3322.2
1977	4	376	74.295	81610	427506	3328.6
1977	5	377	75.037	81977	427776	3347
1977	6	378	75.604	82381	431635	3355.8
1977	7	379	75.642	82760	432810	3372.1
1977	8	380	75.932	82974	433525	3382.2
1977	9	381	76.33	83431	435117	3408.5
1977	10	382	76.17	83661	438376	3441.6
1977	11	383	76.213	84031	440379	3462.9
1977	12	384	75.915	84271	446215	3479.6
1978	1	385	75.66	84464	432554	3470.4
1978	2	386	75.669	84808	442474	3491
1978	3	387	76.43	85338	446917	3518.7
1978	4	388	79.03	86083	460457	3551
1978	5	389	79.072	86404	460019	3555.3
1978	6	390	79.945	86811	462569	3576.3
1978	7	391	80.18	87037	458758	3588.7
1978	8	392	80.379	87324	464741	3606.5
1978	9	393	80.777	87434	463680	3621.6
1978	10	394	81.186	87797	467817	3640.2
1978	11	395	81.651	88249	469844	3652.5
1978	12	396	81.953	88559	472359	3675.5
1979	1	397	81.566	88728	467192	3680.1
1979	2	398	82.181	88985	464984	3694.9
1979	3	399	82.409	89426	478440	3711.6
1979	4	400	81.637	89363	465532	3681.8
1979	5	401	82.58	89681	475838	3686.3
1979	6	402	82.6	89955	470980	3697
1979	7	403	82.001	90019	470384	3699.2
1979	8	404	81.67	90159	471201	3705.8
1979	9	405	81.73	90149	468541	3703.9
1979	10	406	82.07	90360	467141	3724
1979	11	407	81.663	90466	467318	3739.1
1979	12	408	81.491	90617	465953	3752.4
1980	1	409	81.87	90729	469898	3751.6
1980	2	410	81.933	90876	465478	3737.8
1980	3	411	81.908	90995	454879	3719.6
1980	4	412	80.311	90780	445141	3688.2
1980	5	413	78.322	90316	439442	3664.5
1980	6	414	77.329	89974	438177	3665.9

1980	7	415	76.833	89676	443706	3648.8
1980	8	416	77.734	89964	446904	3657.1
1980	9	417	78.885	90046	456317	3668.1
1980	10	418	79.453	90334	465847	3720.9
1980	11	419	80.735	90550	466157	3749.3
1980	12	420	81.135	90774	467308	3772.2
1981	1	421	80.436	91003	470153	3774.3
1981	2	422	80.821	91095	468215	3761
1981	3	423	81.187	91206	463378	3766.4
1981	4	424	80.644	91219	463637	3751.1
1981	5	425	81.32	91142	460358	3759.2
1981	6	426	81.83	91285	459143	3781.5
1981	7	427	82.554	91410	460199	3825
1981	8	428	82.184	91320	458356	3844.2
1981	9	429	81.519	91191	455203	3840
1981	10	430	80.897	91216	449017	3830.3
1981	11	431	79.765	91014	445546	3826.9
1981	12	432	78.87	90831	439778	3817.3
1982	1	433	77.601	90448	437464	3801.4
1982	2	434	79.274	90474	444447	3810.3
1982	3	435	78.72	90337	444802	3811.9
1982	4	436	77.977	90031	445304	3830.9
1982	5	437	77.38	89965	447596	3835.5
1982	6	438	77.121	89703	441250	3812.8
1982	7	439	76.488	89380	439549	3797
1982	8	440	76.084	89177	435519	3795.8
1982	9	441	75.526	88995	436360	3786.1
1982	10	442	74.9	88787	431869	3781
1982	11	443	74.701	88649	433045	3781.9
1982	12	444	74.086	88675	431855	3794.6
1983	1	445	75.666	88826	440096	3792.9
1983	2	446	75.49	88758	438242	3792.5
1983	3	447	76.242	88946	445592	3806.6
1983	4	448	77.197	89211	445551	3809.5
1983	5	449	78.128	89497	452475	3833.7
1983	6	450	78.568	89886	464100	3845.3
1983	7	451	79.961	90313	463853	3879.1
1983	8	452	81.035	89973	463095	3872.3
1983	9	453	82.418	91088	470182	3912.6
1983	10	454	83.068	91408	475334	3953.6
1983	11	455	82.986	91727	480212	3974.8
1983	12	456	83.41	92110	489106	4013.9
1984	1	457	85.144	92524	492267	4040.9

1984	2	458	85.01	93043	492002	4079.7
1984	3	459	85.948	93312	492423	4109.1
1984	4	460	86.405	93650	495151	4143.5
1984	5	461	86.902	93952	499063	4157.2
1984	6	462	87.294	94325	503502	4195.3
1984	7	463	87.47	94647	500813	4224.2
1984	8	464	87.458	94885	500687	4256.2
1984	9	465	87.337	95186	500070	4295.7
1984	10	466	86.928	95499	502168	4262.9
1984	11	467	86.999	95829	506626	4292.2
1984	12	468	86.61	95997	507232	4318
1985	1	469	86.914	96249	505965	4320.4
1985	2	470	87.662	96397	507688	4322.9
1985	3	471	87.883	96734	512132	4337.5
1985	4	472	88.026	96896	511607	4335
1985	5	473	88.227	97163	517534	4338.1
1985	6	474	88.01	97280	508974	4351.4
1985	7	475	87.627	97465	509951	4348
1985	8	476	88.151	97696	519219	4361
1985	9	477	88.682	97878	520612	4364.8
1985	10	478	87.916	98098	515812	4397.7
1985	11	479	88.419	98286	519587	4391
1985	12	480	0	98500	516811	4427.5
1986	1	481	89.612	98599	524579	4410.8
1986	2	482	88.972	98718	521595	4435.6
1986	3	483	88.076	98796	522104	4478.2
1986	4	484	88.749	98974	532617	4481.2
1986	5	485	88.551	99096	527509	4482.4
1986	6	486	88.247	98973	530893	4483.5
1986	7	487	88.534	99276	534030	4492.8
1986	8	488	88.783	99435	534789	4508.1
1986	9	489	88.7	99747	547476	4512.8
1986	10	490	89.499	99980	539744	4509.1
1986	11	491	89.942	100145	538090	4515.7
1986	12	492	90.772	100394	549355	4538.3
1987	1	493	90.196	100543	532012	4540.2
1987	2	494	91.24	100772	551202	4557.5
1987	3	495	91.583	101005	551731	4575.4
1987	4	496	91.958	101367	550147	4567.8
1987	5	497	92.361	101564	549229	4593.6
1987	6	498	93.159	101713	551970	4600.5
1987	7	499	93.721	102047	556757	4621.6
1987	8	500	93.828	102266	554302	4651.3

1987	9	501	93.743	102430	560411	4657.1
1987	10	502	95.014	102980	559765	4689.9
1987	11	503	95.29	103200	558214	4711.1
1987	12	504	95.855	103544	562944	4762.9
1988	1	505	95.926	103623	561659	4735.4
1988	2	506	96.243	104046	568007	4759.1
1988	3	507	96.259	104311	577105	4767.5
1988	4	508	96.816	104537	574010	4778.3
1988	5	509	96.891	104811	575812	4784.1
1988	6	510	96.96	105132	581457	4800.1
1988	7	511	97.593	105400	579099	4820.1
1988	8	512	98.117	105599	579434	4825.9
1988	9	513	97.766	105814	581726	4835.2
1988	10	514	98.035	106091	586242	4863.7
1988	11	515	98.771	106368	588505	4870.1
1988	12	516	99.275	106691	596176	4910
1989	1	517	99.827	106993	596857	4944.6
1989	2	518	99.038	107244	590334	4949.4
1989	3	519	99.968	107438	586820	4963.1
1989	4	520	100.213	107637	592172	4955.6
1989	5	521	99.583	107738	589532	4934.4
1989	6	522	99.407	107838	587714	4947.6
1989	7	523	98.424	107933	581686	4954.1
1989	8	524	98.824	108048	596452	4959.1
1989	9	525	98.623	108178	592273	4952.8
1989	10	526	98.171	108290	586555	4962.2
1989	11	527	98.56	108571	591801	4986.8
1989	12	528	99.032	108692	593757	4995.9
1990	1	529	98.572	108946	589119	5004.8
1990	2	530	99.081	109263	597872	5029.6
1990	3	531	99.559	109461	601356	5031.3
1990	4	532	98.959	109499	594426	5055.9
1990	5	533	99.35	109790	599256	5045.7
1990	6	534	99.33	109869	600805	5054.1
1990	7	535	99.284	109707	597586	5075.2
1990	8	536	99.477	109543	603597	5050
1990	9	537	99.613	109457	592499	5044.6
1990	10	538	99.064	109274	589958	4997.6
1990	11	539	97.748	109074	582984	4995.3
1990	12	540	97.171	108965	576916	5001.2
1991	1	541	96.693	108759	573114	4946.3
1991	2	542	95.929	108500	576506	4945.2
1991	3	543	95.046	108330	573173	4950.4

1991	4	544	95.379	108145	584467	4960.8
1991	5	545	96.12	108107	589261	4958.2
1991	6	546	97.244	108200	586622	4986.7
1991	7	547	97.321	108131	594279	4971.1
1991	8	548	97.445	108215	591775	4971.5
1991	9	549	98.375	108223	594306	4981.3
1991	10	550	98.28	108209	594906	4958.9
1991	11	551	98.143	108115	592980	4969.6
1991	12	552	97.51	108121	585431	4993.9
1992	1	553	97.613	108084	596771	4991.6
1992	2	554	98.099	108077	598272	5018.8
1992	3	555	98.966	108119	600680	5019.4
1992	4	556	99.695	108301	604683	5028.1
1992	5	557	99.953	108495	599422	5044.3
1992	6	558	99.708	108541	605741	5048.2
1992	7	559	100.431	108595	613853	5039
1992	8	560	100.152	108741	604088	5035.6
1992	9	561	100.544	108807	612487	5049.6
1992	10	562	101.266	108941	614966	5079.8
1992	11	563	101.781	109119	616014	5100.2
1992	12	564	101.792	109266	625603	5088.5
1993	1	565	102.162	109502	627170	5112.1
1993	2	566	102.684	109816	626366	5111.6
1993	3	567	102.853	109749	622406	5088.4
1993	4	568	103.197	110055	625622	5115.5
1993	5	569	102.678	110398	626613	5135.7
1993	6	570	102.948	110539	632406	5125.7
1993	7	571	103.171	110744	629346	5124.4
1993	8	572	103.011	110957	632571	5145.2
1993	9	573	104.124	111204	638204	5140.4
1993	10	574	104.425	111525	640930	5149.4
1993	11	575	104.866	111780	644218	5164.5
1993	12	576	105.695	112034	646255	5190.8
1994	1	577	105.907	112302	646991	5166.2
1994	2	578	106.212	112532	652909	5224
1994	3	579	107.087	112982	663780	5246.9
1994	4	580	107.63	113350	660284	5260.3
1994	5	581	108.525	113697	661882	5292.9
1994	6	582	109.01	113980	667958	5286.3
1994	7	583	109.627	114333	665030	5288.6
1994	8	584	110.003	114673	680734	5298.7
1994	9	585	110.154	114980	677787	5328.3
1994	10	586	110.741	115235	682960	5374.1

1994	11	587	111.512	115641	688977	5373.7
1994	12	588	112.64	115918	694151	5394.9
1995	1	589	113.259	116235	697218	5410.4
1995	2	590	113.2	116523	693295	5408.6
1995	3	591	113.384	116679	693050	5410.1
1995	4	592	113.144	116864	687864	5418.8
1995	5	593	113.576	116830	692929	5412.8
1995	6	594	114.022	117024	699608	5433.4
1995	7	595	113.575	117138	691337	5440.7
1995	8	596	115.088	117444	705342	5446.4
1995	9	597	115.75	117664	704480	5467.2
1995	10	598	115.337	117789	704848	5478.4
1995	11	599	115.718	117946	710618	5504.1
1995	12	600	115.869	118118	713986	5516.5
1996	1	601	115.648	118031	706859	5500.5
1996	2	602	116.922	118501	713246	5546.5
1996	3	603	116.779	118767	713601	5563.1
1996	4	604	118.068	118925	719986	5568.5
1996	5	605	119.037	119269	725464	5594.3
1996	6	606	119.989	119546	722044	5633.6
1996	7	607	119.936	119754	727746	5633.5
1996	8	608	120.616	120041	730244	5659.8
1996	9	609	121.228	120172	732477	5682.2
1996	10	610	121.192	120439	738211	5673.7
1996	11	611	122.379	120711	743672	5691
1996	12	612	122.881	120916	738316	5715.8
1997	1	613	123.457	121108	715601	5723.1
1997	2	614	124.752	121423	725226	5747.8
1997	3	615	125.043	121749	724004	5773.5
1997	4	616	125.764	122025	729129	5786.4
1997	5	617	126.162	122288	726443	5813.8
1997	6	618	126.862	122540	733928	5836.3
1997	7	619	127.701	122844	745467	5856.5
1997	8	620	128.816	122924	739273	5893.5
1997	9	621	129.548	123323	746450	5912.8
1997	10	622	130.346	123668	746289	5945.4
1997	11	623	131.083	123952	749785	5987.6
1997	12	624	131.5	124271	753905	6015.7
1998	1	625	131.969	124535	757031	6063.5
1998	2	626	131.997	124743	764366	6104.4
1998	3	627	132.45	124912	769521	6137.8
1998	4	628	133.069	125180	769382	6154
1998	5	629	133.61	125548	768609	6188.7

1998	6	630	132.658	125768	769376	6215.5
1998	7	631	132.505	125836	767056	6235.5
1998	8	632	135.295	126237	771925	6265.2
1998	9	633	134.888	126453	779009	6282.5
1998	10	634	135.512	126696	786093	6304.3
1998	11	635	134.984	126940	789056	6362.1
1998	12	636	135.09	127286	798879	6339.8
1999	1	637	135.912	127431	795076	6364.2
1999	2	638	136.313	127864	806435	6380.9
1999	3	639	137.294	128031	810186	6392
1999	4	640	137.433	128292	806173	6394.7
1999	5	641	138.373	128476	815092	6423.1
1999	6	642	138.605	128740	816862	6459.2
1999	7	643	139.671	129018	821626	6471.9
1999	8	644	140.278	129224	827509	6493.5
1999	9	645	140.392	129410	822904	6471.4
1999	10	646	141.481	129863	827808	6515.9
1999	11	647	141.879	130093	839259	6545
1999	12	648	142.808	130365	847549	6576.6
2000	1	649	143.569	130668	854291	6601.8
2000	2	650	144.291	130843	844396	6613.7
2000	3	651	145.234	131441	854938	6641.5
2000	4	652	146.266	131683	853618	6693.7
2000	5	653	147.228	131909	857758	6717.3
2000	6	654	147.896	131969	859468	6745.2
2000	7	655	147.595	131899	857657	6755.6
2000	8	656	148.65	131837	860389	6780.5
2000	9	657	148.973	132046	857751	6792.2
2000	10	658	148.66	132145	856748	6825.9
2000	11	659	148.206	132279	853255	6855.5
2000	12	660	147.3	132367	859045	6883
2001	1	661	146.013	132428	854960	6863.6
2001	2	662	145.443	132595	855289	6876.9
2001	3	663	144.987	132654	852185	6904.5
2001	4	664	144.607	132489	845838	6908
2001	5	665	144.227	132530	851040	6907.9
2001	6	666	142.771	132431	840153	6920.6
2001	7	667	142.689	132449	849281	6941.6
2001	8	668	141.754	132395	851524	6947.6
2001	9	669	140.33	132182		6982.7
2001	10	670		131767		
2001	11	671				
2001	12	672				

2002	1	673
2002	2	674
2002	3	675
2002	4	676
2002	5	677
2002	6	678
2002	7	679
2002	8	680
2002	9	681
2002	10	682
2002	11	683
2002	12	684