

# PANEL ON COVID-19

---

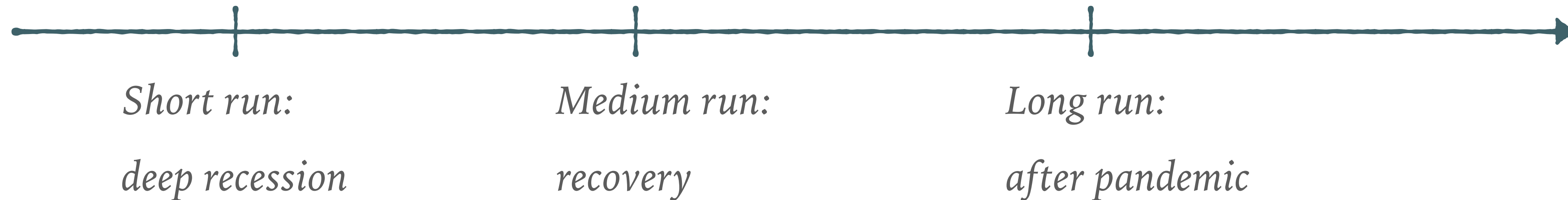
*Veronica Guerrieri*  
*NBER-EFG*





# MACROECONOMIC EFFECTS OF THE PANDEMIC

---



▶ Guerrieri, Lorenzoni, Straub, Werning (2020):

**pandemic = asymmetric shock to high-contact intensive sectors**

▶ A pandemic can be a **Keynesian supply shock** = propagates to other sectors through **demand shortages**

▶ Two key ingredients:

1. complementarities across sectors (through preferences or input-output linkages)
2. incomplete markets

# THREE SOURCES OF SCARRING EFFECTS

---

1. Households' balance sheets
2. Job destruction
3. Business exit

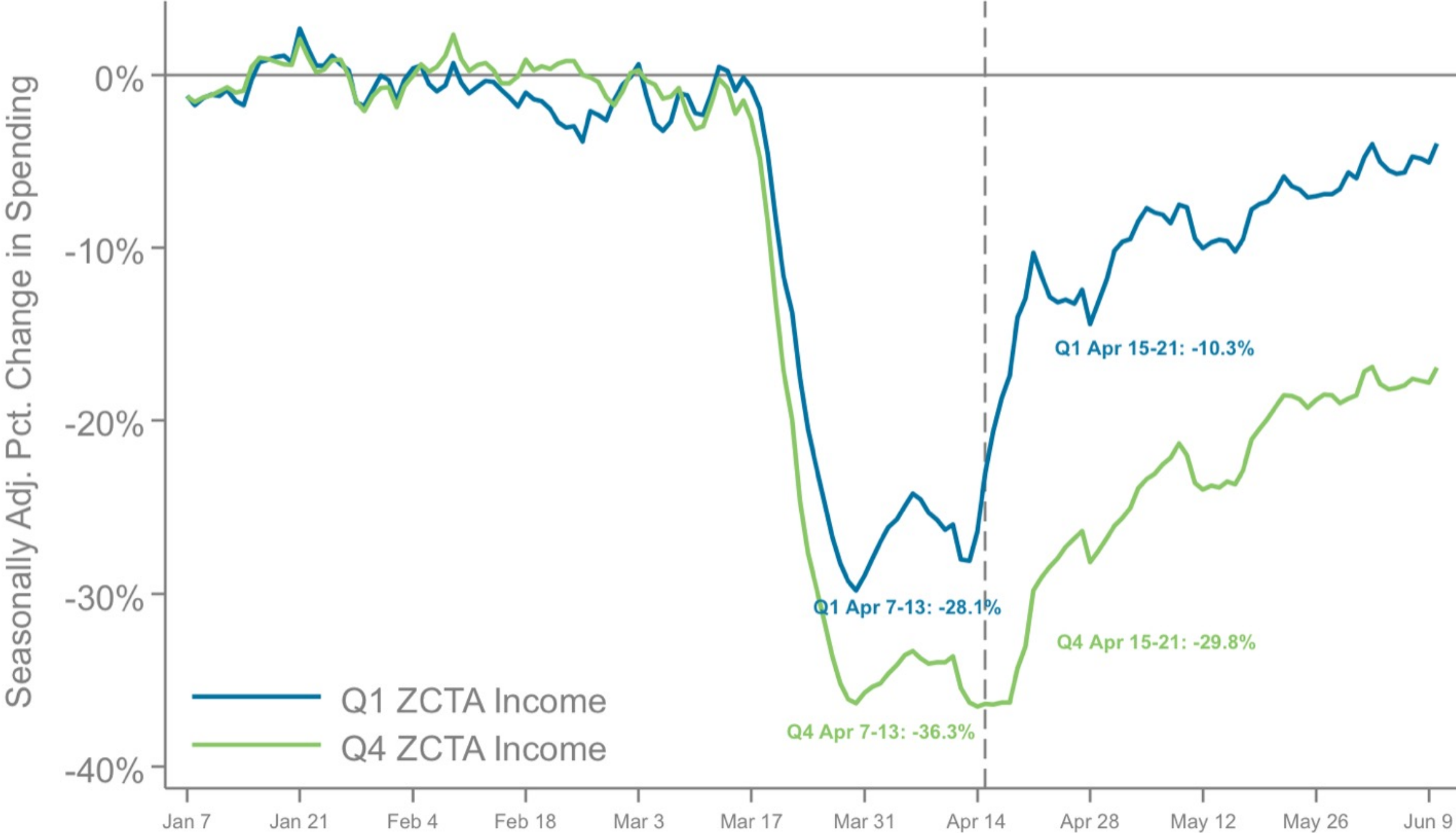
# HOUSEHOLDS' BALANCE SHEETS

---

- ▶ Key question: how much of the shortages in demand are due to sectoral complementarities and how much to incomplete markets?
- ▶ If incomplete markets effects are strong, rich households end up doing more precautionary savings and poor households increase their debt
- ▶ When the recovery starts, the poor with high MPC won't be able to catch up quickly with demand...
- ▶ **Targeted transfers** can help both dampening the demand shortage and speeding up the recovery by reducing debt accumulation of poor households!
- ▶ **Forbearance** avoids loss of borrowing capacity for consumers
- ▶ CARES Act includes both and seems to have worked well so far...

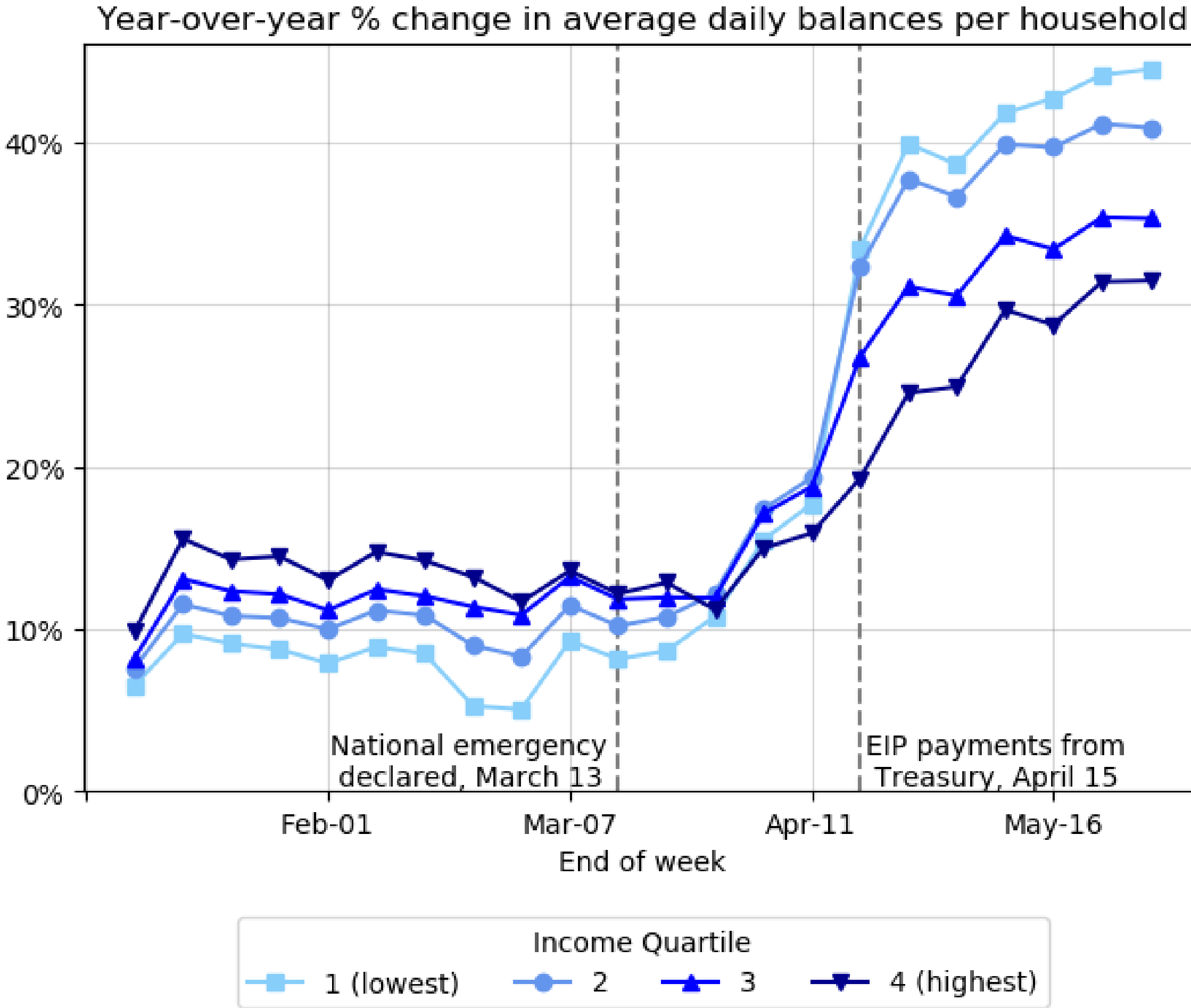
# SOCIAL INSURANCE AT WORK

## A. Seasonally Adjusted Spending Changes by Income Quartile



Chetty, Friedman, Hendren, Stepner, Opportunity Insights Team (2000)

# CHECKING ACCOUNT BALANCES



Cox, Farrell, Ganong, Grieg, Noel, Vavra, Wong (2020)

# LABOR HOARDING TO PRESERVE JOB MATCHES

---

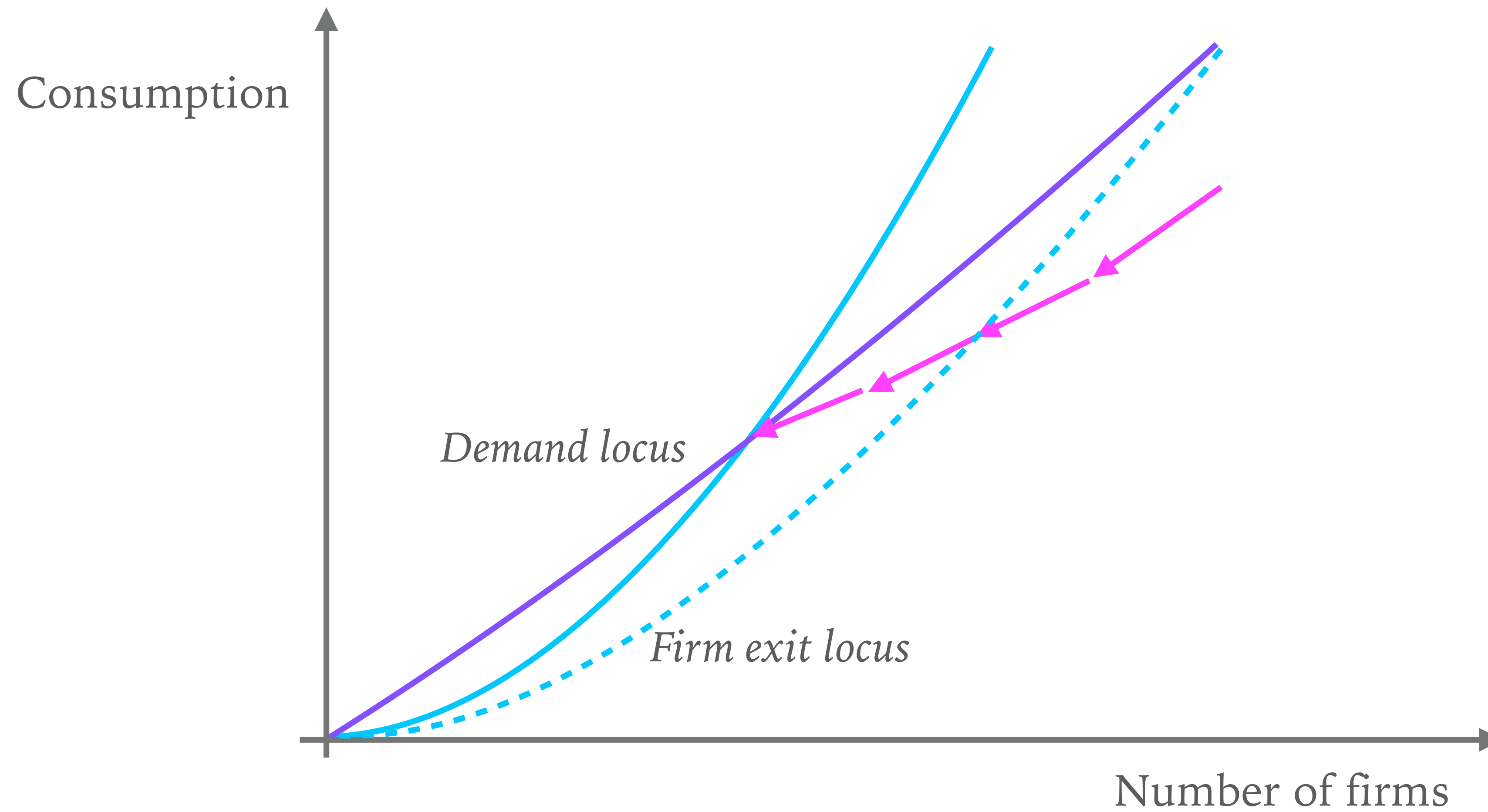
- ▶ Another drag for the recovery are the potential losses from job destructions
- ▶ Labor hoarding iff

$$-w + \frac{1}{R}V_1 \geq 0$$

- ▶ **Incentivize labor hoarding** may help both with social insurance and with a faster recovery!
- ▶ Examples of policies in this direction: Kurzarbeit, Cassa Integrazione, PPP, Main Street Lending
- ▶ Possible negative effect: slow down structural transformation...

# BUSINESS EXIT CASCADES AND DYNAMICS

---





# BUSINESS EXIT CASCADES AND DYNAMICS

---

