

This PDF is a selection from a forthcoming volume from the National Bureau of Economic Research

Volume Working Title: The Economic Consequences of Demographic Change in East Asia, NBER-EASE
Volume 19

Volume Editor / Conference Organizer: Takatoshi Ito and Andrew Rose, editors

Volume Publisher: University of Chicago Press

Volume URL: http://www.nber.org/books/ito_08-2

Conference Date: June 19-21, 2008

Title: Japan's Unprecedented Aging and Changing Intergenerational Transfers

Author: Naohiro Ogawa, Andrew Mason, Amonthep Chawla, Rikiya Matsukura

Date Received: April 1, 2009

URL: <http://www.nber.org/chapters/c8160>

3/5/2009

Japan's Unprecedented Aging and Changing Intergenerational Transfers

Naohiro Ogawa

Population Research Institute, Nihon University

Andrew Mason

University of Hawaii at Manoa

and

Population and Health Studies, East-West Center

Amonthep Chawla

Population and Health Studies, East-West Center

and

Population Research Institute, Nihon University

Rikiya Matsukura

Population Research Institute, Nihon University

An earlier version of this paper was presented at the NBER-TCER-KDI conference on "The Demographic Transition in the Pacific Rim", held during June 19-21, 2008, in Seoul, Republic of Korea

Abstract

This paper analyzes some of the important impacts of Japan's unprecedented population aging on its postwar economy, by drawing heavily upon the computed results of the NTA-Japan project, ranging from the first and second demographic dividends to the lifecycle reallocations. We also shed light on the rapidly changing roles of public and familial support systems for the elderly in Japan, that have evolved together with the family organizational transformation and the rapid development of the social security system over the past several decades.

One of the principal findings of this paper is that an effective use of the demographic dividends, particularly the accumulated second demographic dividend which is likely to remain substantial for the next few decades, appears to be an attractive policy option for Japan to place its future economic growth on a steady path. Another important finding derived from this study is that, since the bursting of the bubble economy in the early 1990s, Japanese elderly persons have been informally playing the role of the society's safety net in providing financial assistance to their adult children and/or grandchildren through the traditional familial transfer mechanism.

Introduction

In 2005 the total world population exceeded 6.5 billion people, which is almost double the size observed in 1965 (United Nations, 2007). The annual growth rate of the world population, however, has been declining continuously during the past four decades; as opposed to its peak value of 2.02 percent during 1965-1970, the current annual growth rate is estimated at 1.17 percent. With the emergence of slower population growth in the latter half of the 20th century, the world demographic outlook of today is substantially different from the one of only a few decades ago.

Slowing global population growth has been induced primarily by a significant decline in fertility over the past few decades. In 1965-1970, there were only 8 countries with below-replacement fertility (a total fertility rate of less than 2.1 children per woman), a number that increased to 68 by 2000-2005. Moreover, in terms of the population share, as shown in Figure 1, only 8.4 percent of the world's population lived in countries with below-replacement fertility in 1965-1970, as compared to 42.7 percent in 2005-2010. It is projected that more than half of the world population will live in countries with a fertility rate below the replacement level in the second half of the 2010s (United Nations, 2007).

At present, the majority of these low-fertility countries are in the developed regions. It should be emphasized, however, that the number of countries in developing regions with below-replacement fertility has also been increasing at a phenomenal rate in recent years. It grew from nil to 24 developing countries/areas over the past four decades under consideration. Fourteen of these 24 countries/areas belong to Asia. Three Asian countries/areas with below-replacement fertility (Hong Kong, Macao, and the Republic of Korea) are currently classified in the category of lowest-low fertility (i.e. those with a TFR below 1.3). In fact, East Asia's fertility is now lowest in the entire world (McDonald, 2008).

Parallel to the worldwide decline in fertility, marked mortality improvements have been achieved in most of the world. Approximately a half of the world's population succeeded in meeting the ICPD Program of Action goal of reaching a higher-than-seventy-years life expectancy at birth for both sexes in 2000-2005. In many industrialized nations, life expectancy at birth is rapidly approaching 80 years. In East Asia, Hong Kong, Macao, and Japan have already surpassed the 80-year level.

As a result of these rapid fertility and mortality transformations, population age

distributions are being transformed, with a relative increase in the numbers of elderly and a relative decrease in the numbers of young. Thus, the 21st century is likely to become the century of population aging (Lutz, Sanderson, and Scherbov, 2004).

In many countries, both developed and developing, the age structure shifts are generating a wide range of disruptions at both societal and familial levels. At the societal level, many governments, mainly in developed regions, are concerned about adverse effects of population aging on various socio-economic dimensions, ranging from their national productivity, labor supply and its quality, savings and capital formation, to the financial sustainability of their pension schemes and health care programs. At the familial level, couples are having fewer children later in their lives. Marriage is delayed, more may never marry, and divorce is on the rise. More people are living alone and more elderly couples are living independently from their children. These family-level demographic developments are affecting the ways in which family members interact with each other, especially in providing support to their elderly parents and children (Ermisch, 2003).

By and large, these general observations apply to contemporary Japan. Its postwar fertility decline was the earliest to occur in the non-Western world, and was also the most rapid among all industrialized nations. Japan's longevity is currently at the highest level in the contemporary world. As a consequence, Japan's population has been aging extremely fast over the past several decades, and its proportion aged 65 and over is currently the highest in the world. Japan's social structure and family organization differ substantially from those in developed nations in the West (Hodge and Ogawa, 1991; Ogawa and Retherford, 1993, 1997; MacKellar, 2003; Ogawa, Retherford, and Matsukura, 2008). For these reasons, Japan has already faced, and most likely will continue to encounter a variety of problems, both serious and unique, as it adjusts to population aging and adjusts resources allocated to a rapidly growing elderly population.

After reviewing some key features of Japan's demographic dynamics during the postwar period, we discuss the impact of population aging on both public and familial intergenerational transfers in Japan during the last few decades. We then describe some vital features of Japan's socioeconomic system that have been affected by rapid population aging with important implications for the welfare of the elderly over the foreseeable future. Japan's ability to cope with population aging will be governed by public and familial systems of intergenerational transfers. We will rely on new estimates for Japan for 1984-2004 generated as part of an international project called "National Transfer Accounts (NTA)". In the final section, we consider some policy options available to 21st-century Japan for coping with its unprecedented

population aging.

We confine the scope of this paper specifically to the Japanese context. However, Japan's experiences in population aging and its policy development may provide a useful base for analyzing important policy issues related to population aging in a number of developing countries, particularly those in Asia, which are currently undergoing rapid age structural transformations. Moreover, in the face of its fast postwar economic development, Japan still retains some of its traditional cultural values, which is why the Japanese model may be of relevance to policy makers in the developing regions who are interested in establishing a comprehensive approach by combining the best of traditional and modern values in providing care and support to the elderly.

Rapid Demographic Transition in Postwar Japan

(a) Falling fertility and mortality

Japan's fertility transition began in the early part of the 20th century with gradual fertility reduction (Hodge and Ogawa, 1991). After World War II, however, the tempo of the reduction became extremely rapid. Following a short baby boom period (1947-1949), Japan's TFR declined by more than 50 percent from 4.54 to 2.04 children per woman during 1947-1957. This 50-percent reduction of fertility over the 10-year period is the first such experience in documented history.

Thereafter, there were only minor fluctuations around the replacement level until the first oil crisis occurred in 1973, triggering a series of restructuring in the Japanese economy, which, in turn, slowed down the pace of Japan's economic growth. Parallel to this, Japan's fertility level started to fall again, as presented in Figure 2. By the mid-1990s, Japan's TFR declined below 1.5 children per women, with the value of TFR for 2005 plummeting to 1.26, lowest in postwar time, before the rebound to 1.32 in 2006 and 1.34 in 2007. This post-1973 decline is referred to by some demographers as Japan's second demographic transition (Ogawa and Retherford, 1993; Retherford and Ogawa, 2006; Ogawa, Retherford, and Matsukura, 2008).

In line with these changes in TFR, the birth cohort size varied considerably over time, as depicted in Figure 2. During the baby boom period, there were, on average, approximately 2.7 million births per year, but by 1957, the number of births decreased to 1.6 million. In the early 1970s, however, despite the low fertility rate, the number of births increased to more than 2 million, as an "echo" effect of the baby boom, or the often called "second-generation baby boomers". Since then, births have again trended downward, reaching slightly less than 1.1

million in 2007. This represents a 60 percent decline in the annual number of births from record levels reached in the late 1940s.

Japan's fertility has attracted a great deal of attention from both inside and outside the country. In contrast, relatively limited attention has been paid to the speed of Japan's post-war mortality transition. In 1950-1952, life expectancy at birth was 59.6 years for men and 63.0 years for women. In 2007, male life expectancy at birth reached 79.2 years to become the third highest in the world, following Iceland (79.4 years) and Hong Kong (79.3 years), and female life expectancy rose to 86.0 years, the highest in the world, followed by Hong Kong (85.4 years) and France (84.1 years). Moreover, between 1950-52 and 2007, life expectancy at age 65 grew to a substantial extent, from 11.4 to 18.6 years for men and from 13.4 to 23.6 years for women, which implies a marked increase in the retirement period and in the joint survival to older ages for both husbands and wives.

The remarkable increase in life has influenced many aspects of Japan economy. Insurance companies have reduced premiums substantially for the first time in 11 years (The Asahi Shimbun, 2007). The composition of sales by Japanese life insurance companies have shifted in response to longer life expectancy, lower childbearing, and rising divorce. In 2008, for the first time ever, outstanding annuity and medical insurance policies, rather than life insurance contracts, constituted more than half of the products sold by Japanese life insurance companies (The Nikkei, 2008a).

A remarkable feature of aging is rapid growth in the number of centenarians. The average annual growth rate, 13 percent over the period 1963-2007, exceeds that of any other age group in Japan.

In Figure 3, the data on the average age of the 30 oldest deaths in each year over the period 1950~2006 are plotted separately for men and women. The average age of the 30 oldest deaths increased substantially over the second half of the 20th century for both sexes; in 2006 the average age of the 30 oldest deaths was 107.6 years for men and 109.9 years for women. More importantly, the plotted trends of the 30 oldest deaths indicate that the tempo of life prolongation accelerated for both sexes since the mid-1960s, a few years after the implementation of universal health coverage.

(b) Population decline and aging

Although the number of elderly in Japan has been increasing rapidly, the number of

children, those under age 15, has been declining for 27 consecutive years; Japan now has fewer children than at any time since 1908 (Washington Post, 2008). The overall size of Japan's population began declining from the end of 2005. According to a population projection based on the most recent version of the population-economic-social security model constructed by the Nihon University Population Research Institute (Ogawa et al., 2003), the total population is expected to decrease to 121.1 million persons in 2025, a 5.2 percent reduction from 2005.

Changes in age structure and other important demographic data are reported in Table 1. The proportion of the population aged 65 and older increased from 4.9 percent in 1950 to 20.2 percent in 2005, and is projected to increase to 31.0 percent in 2025. Japan's population will likely continue to be the world's oldest national population for the next twenty years. More importantly, the Japanese population will reach the world's highest level of aging at an unprecedented rate, as discussed elsewhere (Ogawa and Retherford, 1997; Ogawa et al., 2003). Compared with such European countries as Sweden and Norway, the tempo of aging in Japan is approximately three times as fast. Furthermore, the percentage of the 65+ population that is 75 and older is projected to increase from 40.9 percent in 2005 to 59.6 percent in 2025. Comparing NUPRI projections and recent United Nations (2007) projections reveals that Japan's concentration in the 75+ age group is likely to be by far the highest in the world in 2025, followed by Sweden (52.1 percent) and Italy (51.8 percent).

Changing Economic Growth Performance and Public Transfer Programs

(a) Macroeconomic growth

During World War II, Japan's productive capacity was utterly shattered. In 1959, Japan's per capita GNP was only US\$153, lower than that of Mexico (US\$181) or the Philippines (US\$172). By the end of the 1950s, however, Japan's real per capita income had recovered to prewar levels. During the 1960s, Japan's real GDP grew at a phenomenal rate of about 11 percent per annum. After the oil crisis of 1973, as mentioned earlier, Japan's economic growth performance became significantly less impressive. In the mid-1980s, the Japanese economy entered the bubble economy phase. Its investment boom ended abruptly in the second half of 1990 and a number of leading banks and other financial institutions became insolvent. Government debt has been accumulating at an alarming rate, reaching US\$8.49 trillion in 2008. Debt has more than doubled during the last ten years, and relative to GDP is by far the worst among industrialized nations. Japan's international competitiveness has deteriorated very quickly. In the early 1990s its economy ranked first in terms of international competitiveness, but it fell to the 22nd place in 2008 (IMD, 2008). In view of these prolonged economic problems, some economists call the 1990s "Japan's lost decade" (Yoshikawa, 2001).

Japan has undertaken many important structural reforms of its economy, but its mandatory retirement policy is an extreme case as compared with other industrialized nations (Clark, Ogawa, Lee, and Matsukura, 2008). The proportion of firms having mandatory retirement rules has been increasing, not decreasing. The Japanese government is currently attempting to encourage firms to increase the mandatory retirement age to 65. The *Law Concerning Stabilization of Employment of Older Persons*, passed in 2004, requires firms to increase the age of mandatory retirement to 65. However, no penalties are imposed for noncompliance (Japan Institute of Labour Policy and Training, 2004).

Despite its mandatory retirement policies, the elderly have high labor participation rates by international standards (Ogawa, Lee, and Matsukura, 2005; Matsukura, Ogawa, and Clark, 2007). In 2000, the labor force participation rate for elderly Japanese men aged 65 and over was greater than 30 percent. In sharp contrast, the corresponding figure for developed countries in Europe was below 10 percent and was 18 percent for the United States. Similarly, Japanese women are more likely to continue working than older women in Europe and the United States.

(b) Old-age pension and medical care plans

As Japan recovered from the shambles of World War II, it established universal pension and medical care schemes in 1961. Since then, Japan's social security system has grown remarkably. Between 1961 and 2005, the share of social security benefits increased from 4.9 to 23.9 percent of the national income (National Institute of Population and Social Security Research, 2007). Moreover, the proportion of the social security expenditure allotted to the pension schemes increased from 22.7 percent in 1964 to 52.7 percent in 2005, while the corresponding value for the medical schemes declined from 54.4 to 32.0 percent. Owing to population aging, as well as the maturity of the old-age pension schemes, the relative share of pension benefits paid out in national income has been on an upward trend in recent years.

Japan undertook major reforms of its public pension schemes in 2004. One of the primary objectives was to fix the level of future contributions increasing the transparency for younger workers, but reducing the benefits considerably. The government introduced a mechanism to automatically balance benefit levels according to future changes in the population age structure. The goal was to avoid repeated reforms and to restore the younger generations' trust in government pension schemes. This may be regarded as a paradigm shift in Japan's social security provisions (Sakamoto, 2005). As a consequence of the 2004 reform, the replacement rate for the Japanese public pension declined considerably, and is projected to fall to 50.2 percent by 2023, after which, it is assumed, will remain unchanged up to 2050.

Such downward adjustments of benefits have been clearly reflected in the expectations of Japanese. According to a national survey on the economic life of the elderly undertaken by the Cabinet Office in January-February 2007 (The Nikkei, 2008b), 56.9 percent of respondents aged 55 and over (including baby boomers nearing the mandatory retirement age) stated that their pension benefits would fall short of their living expenses from age 60. In the 2002 round of this survey, the proportion of those who held this pessimistic view was 46.6 percent.

The second major component of social security benefits is medical. Subject to Japan's economic growth performance, the coverage in medical insurance plans has been revised on a periodic basis. Despite the changes that have taken place in the past few decades, the absolute amount of financial resources allotted to medical care services has been rising. One of the problems that have set Japan apart from other industrialized nations is an extremely long period of hospitalization (Ogawa et al., 2007). In 2005 it was 35.7 days, which is the longest among the 19 OECD countries, followed by 13.4 days in France (OECD, 2007).

In response to the upward spiral in medical care costs, the government of Japan implemented the Long-term Care Insurance Scheme (LCIS) in 2000 with a view to reducing the average duration of hospitalization for inpatient care by facilitating in-home care. The LCIS is expected to alleviate the care-giving burden to be placed upon family members, many of whom are middle-aged women (Ogawa and Retherford, 1997). Because the expenditure for the LCIS had grown at an alarming rate since its inception, the scope of its services was critically reviewed and downgraded in 2006 with a view to curbing future costs.

In April 2008, the government implemented a new medical insurance scheme specifically for senior citizens aged 75 and older as another step toward curbing the nation's mushrooming medical costs. Under this new medical scheme, premiums are automatically deducted from pension payouts. However, because premiums have actually become higher under the new scheme for a certain segment of the targeted elderly age group, a possible revision of the new scheme has already become an urgent political issue.

Weakening Familial Support and Abrupt Normative Shifts

As distinct from developed countries in the West, multigenerational living arrangements are still fairly common in Japan (Ogawa and Ermisch, 1996; Ogawa, Retherford, and Matsukura, 2008). Although three-generational households persist in Japan, the proportion of elderly living

with adult children is declining and with it the potential for family support for the elderly. As shown in Figure 4, the proportion of those aged 65 and over coresiding with their adult children declined from 70 percent in 1980 to 43 percent in 2005. In addition, the index called the familial support ratio (expressed as the ratio of women aged 40-59 to elderly persons aged 65-79) is expected to decline substantially over the next 20 years. The value of this index was 1.30 in 1990, and is projected to be 0.65 in 2010, a 50 percent decline. The present value of this index is the lowest in the entire world and is expected to continue to be so for another 20 years.

Apart from these demographic transformations, value shifts among the Japanese people have been dramatic. These value changes are well captured in the data gathered in the *National Survey on Family Planning* series, conducted every other year from 1950 to 2004 by the Mainichi Newspaper (Population Problems Research Council, 2004). Since the first round of the survey, except for a few rounds, a question regarding dependence on children for old-age security had been directed to currently married women of reproductive age who have at least one child. In addition to these time-series data obtained by the Mainichi Newspaper, we have extended the time span, as depicted in Figure 5, by utilizing data collected in the *National Survey on Work and Family*, undertaken by the Nihon University Population Research Institute in 2007.

The precoded responses were as follows: (1) “expect to depend on children,” (2) “do not expect to depend on children,” and (3) “never thought about it.” The proportion of respondents who expect to depend on their children declined almost continuously over the period 1950-2004. Almost two-thirds of Japanese married women in 1950 expected to depend on their children for old-age security, but only 9 percent in 2007 expected to do so. These long-term downward trends in parents’ expectations for familial support closely parallel the expansion of old-age public pensions since the early 1960s.

In the *National Survey* conducted by the Mainichi Newspaper since 1963, the question on the attitude of married women towards taking care of their aged parents was asked in successive rounds. The precoded response categories are as follows: (1) “good custom,” (2) “natural duty as children,” (3) “unavoidable due to inadequacy of public support resources,” and (4) “not a good custom.” We have also supplemented these time-series data compiled by the Mainichi with the data gathered by Nihon University. As indicated in Figure 5, the proportion of those who chose one of the first two response categories (“good custom” and “natural duty as children”) was stable over the period 1963-1986. From 1986 to 1988, however, a sudden decline occurred. In the years leading up to 2007, the proportion of married women of reproductive age who

chose one of these two response categories was, by and large, declining.

Obviously, these demographic and socioeconomic transformations in postwar Japan have been affecting the pattern and mode of intergenerational transfers over time. To analyze these changes in intergenerational transfers, we will draw heavily upon some of the principal findings recently generated from the National Transfer Account (NTA) project for Japan. A detailed explanation of NTA's basic concept, the crucial computational assumptions used, and the definitions of key variables are available on the NTA home page (<http://www.ntaaccounts.org>).

Population Aging, Intergenerational Transfers, and Two Demographic Dividends

The economic lifecycle is fundamental to understanding the macroeconomic effects of population aging. As has been recently discussed elsewhere (Bloom and Williamson, 1998; Mason, 2001, 2005; Mason and Lee, 2006, 2007), the divergence between production and consumption interacts with changing population age structure to generate a demographic dividend, which has been substantial but transitory in Asia. Mason and Lee have shown that a second and sustainable dividend is possible due to increased accumulation of physical or human capital (Lee and Mason forthcoming; Mason, 2007; Mason and Lee, 2007). One of the key components of the NTA system is detailed information pertaining to the lifecycle of production (labor income) and consumption. This information can be used to calculate the economic support ratio and quantify the extent to which per capita income has been influenced by changes in the working share of the population, i.e., the first demographic dividend. The economic lifecycle also provides key information for modeling the second demographic dividend, as explained below.

Fertility decline leads to the first demographic dividend because the population in the working ages increases relative to non-working ages. This is incomplete, however, because gains depend both on what is produced at each age and what is consumed. The first demographic dividend arises because the population is concentrated in ages during which production exceeds consumption. Measuring the dividend in growth terms, the first demographic dividend is positive when the rate of growth of the number of effective producers exceeds the rate of growth in the number of effective consumers (Mason, 2007).

Figure 6 shows estimates of age-profiles of per capita consumption, both private and public sectors combined, and per capita production (labor income) in five selected years, namely, 1984, 1989, 1994, 1999, and 2004. These profiles have been estimated by drawing upon private-sector

data from five rounds of the *National Survey of Family Income and Expenditure* (NSFIE) from 1984~2004, carried out by the Statistics Bureau of Japan, and public-sector data for the corresponding five years gleaned from various government publications. The estimates are expressed in terms of 2000 prices using the GDP deflator.

A few points of interest emerge from this graphical exposition. First, as expected, throughout the time periods under review, there are sizeable income-consumption deficits at both young and older lifecycle stages. These lifecycle deficits must be funded with reallocations coming largely from the surplus of income generated at the lifecycle surplus stage.

Second, the age at which an average individual shifts from a net consumer to a net producer gradually increased from 24 in 1984 and 1989 to 25 in 1994 and to 26 in 1999 and 2004. A number of factors contributed to the upward trend in the crossing age: (1) earnings profiles, (2) hours worked, (3) women's labor force participation and the availability of child-care and old-age leave schemes, (4) sectoral shifts in the labor force, (4) higher enrolment rates in tertiary education, and (5) a marked increase in freeters (those aged 15-34 who lack full-time employment or are unemployed) and NEETs (those not currently engaged in employment, education or training).

At the other end of the lifecycle, the age transition from a net producer to a net consumer rose marginally from 58 in 1984 and 1989 to 59 in 1994, 1999, and 2004. The persistency of the crossing age at the later stage of life cycle can be traced to Japan's mandatory retirement age of 60. The length of time in the cross-section when individuals are producing more through their labor than they are consuming ranged from 33 to 34 years, only to two-fifths of the average length of life in present day Japan.

Third, labor income increased substantially between 1984 and 1994 reflecting the substantial economic growth during the "bubble economy" phase. The age profiles of per capita production changed little between 1994 and 2004 reflecting the influence of "Japan's lost decade". The growth in labor income that occurred during the entire twenty year period is concentrated in the prime working ages. Labor income below age 25 or above age 65 was essentially constant or declined.

Fourth and more importantly, the age-profiles of per capita consumption rose almost continuously, particularly at the younger and older ages. Of particular note is the emergence of an upward sloping consumption curve among those aged 65 and over in 2004. This is accounted

for by the implementation of Long-term Care Insurance (LTCI) starting from the year 2000. In-home care for the frail elderly, which had until then been informally provided by their family members, became formalized as a part of the market economy. As a result, Japan's per capita consumption profiles have been increasingly similar to those in Finland, the United States, Sweden, and Costa Rica among the NTA member countries.

How and why the economic lifecycle is changing in Japan is an important issue, but the concern here is the affects of age structure given the age patterns of consumption and labor income observed in Japan. This analysis is based on an average of the five sets of profiles shown in Figure 6. The age-specific values, shown in Figure 7, are used as weights to calculate the effective number of producer and the effective number of consumers over the period 1925-2025. The ratio (producers over consumers) is the economic support ratio. The first demographic dividend is defined as the annual growth rate of the economic support ratio, which measures the change in output per effective consumer due solely to changes in age structure (Figure 8). For 34 consecutive years from 1945 to 1979, the effective number of producers grew more rapidly than the effective number of consumers in Japan. The magnitude of the positive first demographic dividend was large, adding just over one percent per year to economic growth during the rapid economic growth of the 1960s and the early 1970s.

As has been the case with other developed countries, Japan's first demographic dividend lasted for a few decades, but proved inherently transitory in nature. Since the mid-1990s the effective number of producers has been growing more slowly than the effective number of consumers, the economic support ratio has been declining, and the first dividend has turned decidedly negative. This change is a direct consequence of population aging.

The same demographic forces that produce an end to the first dividend may lead to a second demographic dividend. Implicit in the large gap between consumption and production at old ages is the lifecycle demand for wealth. To support consumption in old-age that greatly exceeds production, lifecycle pension wealth in one of two forms must be accumulated. One form is transfer wealth or the net present value of public and private transfers. The second form is assets, which consists of capital, land, foreign assets, etc. As a population ages, the demand for lifecycle pension wealth increases substantially. In part, this occurs because the duration of retirement is longer due to increase life expectancy and, in part, this occurs because of changes in the age composition of the population. If the demand for wealth is met by expanding transfer wealth, then population aging leads to large implicit debts imposed on future generations. If countries rely on capital accumulation to meet the retirement needs of the elderly, population

aging provides a powerful incentive to accumulate capital and other assets. A key point is that in countries that rely on transfers, both public and familial, in meeting the retirement needs of the elderly, the second demographic dividend will not emerge. While the first dividend is purely accounting-oriented, the second dividend consists of both compositional and behavioral effects (Mason, 2007; Ogawa and Matsukura, 2007; Mason and Lee 2007). The second dividend is affected not only by the numbers of the elderly persons relative to younger persons, but also by the extent to which consumers and policy makers are forward-looking and respond effectively to the demographic changes that are anticipated in the years ahead. When life expectancy is increasing, for example, the impetus for accumulating wealth is stimulated, which, in turn, leads to a permanent increase in income. To summarize, if capital accumulation rather than familial or public transfer programs dominate the age reallocation systems for supporting the elderly, population aging may yield a second demographic dividend due to higher rates of saving and capital intensification of the economy.

Compared with the first dividend, measuring the second dividend is difficult, in part because the accumulation of wealth is intrinsically forward looking. The demand for wealth depends on expectations about the future that can not be directly measured. In the present study, we have followed a relatively simple partial equilibrium method. As fully discussed elsewhere (Mason, 2007), the second dividend is defined as the growth rate of productivity or output per labor income that arises because of an increase in the demand for assets as a consequence of population aging.

The estimates of the second demographic dividend over the period 1960-2035 are shown in Figure 9. Japan's second demographic dividend is very high in the 1980s, generating almost one and half percentage points of additional economic growth. Beginning from the 1990s, the second demographic dividend fluctuates to a considerable extent, with a trough in the 2010s, followed by a small upsurge in the 2020s. These oscillations occur primarily because the second-generation of baby boomers enters the age group 50 years old and over, in which they are expected to save at a high rate.

Undoubtedly, depending on how the Japanese elderly utilize or allocate their current and future accumulated wealth, the Japanese economy's future scenarios will be substantially different. Numerous banks and life insurance companies are aware of this phenomenon and have recently been paying great attention to the baby boomers from 1947 to 1949, who are now approaching their mandatory age of retirement. They have already contributed greatly to creating both first and second demographic dividends over the course of Japan's demographic

transition after World War II, and they are expected to enjoy the fruits of the second demographic dividend during their retirement life, as hinted in Figure 9.

Figure 10 plots the age profile of asset holding in Japan in 1999 among those aged 60 and over. Using the 1999 round of NSFIE, we have estimated their age-specific stock of real and financial assets. In addition, we have computed the present value of the expected future stream of public pension benefits. The detailed computational procedure and assumptions employed are available elsewhere (Ogawa and Matsukura, 2007). A quick glance at this graph reveals that the Japanese elderly are wealthy. At age 60, the total amount of assets an average person owns is more than 50 million yen, or US\$0.5 million. In fact, they are wealthier than what this graph shows, because private pensions are not included in the computation. In addition, familial transfers are also not included in Figure 10, but they are discussed below.

A striking feature of the graph is that the present value of public pension benefits to be paid to the elderly is greater than that of real assets at a relatively early stage of retirement life, but the latter exceeds the former by a great margin at a later stage of retirement life. A possible explanation is that the liquidation of real assets such as land and housing is crucial for very old persons, particularly those who are living alone. There seems to be a substantial potential for developing various financial schemes such as the reverse mortgage plan. These are cross-section estimates, however, so that other explanations may be important.

An additional feature of the demand for wealth in Japan is that the preference for land has declined considerably over the last 15 years or so, during “Japan’s lost decade”. According to various rounds of the *National Opinion Survey on Land Issues* conducted by the Ministry of the National Land and Transportation, the proportion of those aged 60 and over who thought that land was a better asset than financial assets such as savings and securities declined from 63 percent in 1994 to 37 percent in 2007 (Figure 11). This suggests that an increasing proportion of the Japanese elderly need more information regarding investment opportunities. Caution should be exercised, however, with regard to the lack of appropriate knowledge pertaining to various financial markets. According to a recent report released by the OECD (2005), 71 percent of the population aged 20 and over have no knowledge about investment in equities and bonds, 57 percent have no knowledge of financial products in general, and 29 percent have no knowledge about insurance, pensions, and tax. The ongoing global financial crisis will surely influence preferences and knowledge over the coming years.

To cope with these problems, the Financial Services Agency of the Japanese Government

implemented the Financial Instruments and Exchange Law, effective from September 30, 2007. This financial business law aims at enhancing investor protection by tightening the rules for financial institutions' sales of stocks, investment trusts and other products that could cause holders to suffer a loss of principal. As a result, in order to avoid possible regulatory trouble, one of the major banks decided not to sell risk instruments to customers 80 and over unless they can demonstrate sufficient knowledge of investing or are accompanied by other family members at the time of purchase (The Nikkei 2007). The large bank requires that customers aged 70 and over receive explanation concerning the risks involved at least twice before they purchase an investment trust or variable annuities. Another leading bank has recently begun the practice of visiting customers aged 90 and over once every three months, even if their products do not suffer any losses.

Changing Pattern of Lifecycle Deficits and Lifecycle Reallocations

The effect of population aging on the accumulation of assets will depend on the system for reallocating resources across age. The NTA system provides a comprehensive framework for estimating consumption, production, and resource reallocations by age. NTA measures intergenerational flows for a certain period of time (usually a calendar or fiscal year), and its flow account is governed by the following expression:

$$\underbrace{Y^l(x) + Y^A(x) + \tau^+(x)}_{\text{Inflows}} = \underbrace{C(x) + S(x) + \tau^-(x)}_{\text{Outflows}}$$

where Y^l = labor income, Y^A = asset income, τ^+ = transfer received, C = consumption, S = saving, and τ^- = transfer given. It should be noted that this flow identity holds for each age x as well as the whole economy.

Rearranging the terms, the lifecycle deficit, namely, the difference between consumption and labor income, $C(x) - Y^l(x)$, must be equal to the inter-age flows or reallocations that come in the following two forms: net transfers, $\tau(x) = \tau^+(x) - \tau^-(x)$, and asset-based reallocations, $Y^A(x) - S(x)$.

$$\underbrace{C(x) - Y^l(x)}_{\text{Lifecycle deficit}} = \underbrace{\tau^+(x) - \tau^-(x)}_{\text{Net transfers}} + \underbrace{Y^A(x) - S(x)}_{\text{Asset-based reallocations}}$$

Age reallocations

The age reallocations can be further disaggregated into public-sector and private-sector age reallocations. That is,

$$C(x) - Y^l(x) = [\tau_g^+(x) - \tau_g^-(x)] + [\tau_f^+(x) - \tau_f^-(x)] + [Y^{Ag}(x) - S_g(x)] + [Y^{Af}(x) - S_f(x)]$$

where subscripts, g and f , refer to “public” and “private” age reallocations, respectively.

Before we proceed to the discussion of computational results, we would like to caution the reader about the following two points. First, both ‘familial transfers’ and ‘private transfers’ are used interchangeably in this paper; both of the terms refer to transfers coming from other family members of the same or different households. Second, the private transfers presented here are limited to current transfers. Capital transfers, e.g., bequests and *inter vivos* capital transfers, are not included.

It is also important to note that the estimated values for the totals are adjusted to match aggregates from National Income and Product Accounts (NIPA), thus insuring consistency with NIPA. Labor income, however, does not exactly correspond to the NIPA counterpart, because the income of those self-employed (mixed income) includes returns to labor and capital. Based upon the result derived from one of the recent studies (Gollin, 2002), we have opted to allocate two-thirds of this income to labor and one-third to capital.

Figure 12 presents the changing pattern of three components of the age reallocations for 1984 to 2004. The three components consist of reallocations through assets, net public transfers, and net private transfers. All values are measured in terms of 2000 constant prices and on an annual basis. Panel A presents age reallocations for 1984, Panel B for 1994, and Panel C for 2004.

There are many important changes in age reallocations over this twenty year period. First, the impact of the rapid growth of the elderly population upon transfers is very clear. Net total transfers to those 65 and older increased by three times from 1984 to 2004. The increase is entirely a consequence of net public transfers to the elderly grew 4.4 times in real terms. In contrast, the amount of net familial transfers to the elderly declines by 75% during the same period. Assets have become extremely important for the elderly population - asset-based reallocations increased by 10 times in real terms during 1984-2004. Despite such phenomenal growth of asset-based reallocations, net public transfers dominated asset-based reallocations for the elderly population in 2004.

Second, despite a large decline in the young population, net transfers to those aged 0-19 grew by 9 percent during the two decades. The composition of the net transfers changed

appreciably over time. Net public transfers to this age group rose by 35 percent in real terms, while net familial transfers declined by 7 percent.

Third, though relevant tables are omitted, on a per capita basis, net public transfers to both elderly and young persons both doubled, over the period in question. More importantly, while the amount of net familial transfers to the young population during the two decades rose by 34 percent, there was a 70-percent decline for the elderly population.

Fourth, net public transfers are negative for the productive age groups 20-59 with the peak shifting right-ward (to higher ages) over time, reflecting the influence of population aging (Figure 12). In 2004, the peak occurred approximately at age 57, while in the earlier years the peak occurred between ages 40 to 50. On a per capita basis, however, the peak of the tax burden remained relatively stable in the vicinity of age 55 during the period under consideration.

Fifth, the role of asset-based reallocations became increasingly important over time particularly for the elderly, as can be clearly seen from the three panels of Figure 12. Although asset-based reallocations occur in both private and public sectors, the amount of asset-based reallocations in the private sector has consistently dominated those in the public sector. Furthermore, a positive asset-based reallocation implies that people receive asset income in excess of their saving. In 2004, for instance, positive asset-based reallocations reach their peak when people are in their 60s, and are comprised largely of the return to private assets (e.g., property income). In contrast, the small negative asset-based reallocation at young ages in 1984 occurred mainly owing to public saving exceeding public asset income.

Sixth, a careful examination of the three panels reveals that net familial transfers are negative among relatively young elderly persons. This phenomenon is particularly pronounced in 2004 among the elderly in their 60s and 70s (Panel C of Figure 12). The financial assistance relatively young elderly persons provided to their adult children and/or grandchildren exceeded the monetary assistance the young elderly received. The magnitude of negative net familial transfers for relatively young elderly rose during the period of “Japan’s lost decade” in which the unemployment rate remained at a very high level and labor income hardly grew at all in either nominal and real terms. The data displayed in Figure 13 further substantiates the validity of this interpretation: all age groups received positive net intra-household transfers from the age group 60-74.

Moreover, according to a nation-wide survey undertaken by the Nihon University

Population Research Institute in April 2007, the proportion of the survey respondents in their 40s who had received financial assistance from their parents over the previous 12 months was approximately 50 percent higher than that of those who had provided financial assistance to their parents. These results suggest that despite the fact that multigenerational coresidence has been eroding over the past few decades, the Japanese elderly are still playing a vital role in providing financial support for their offspring when the latter encounter economic difficulties. Although older persons in Japan are often considered a liability for the country, they are actually playing a key role as a safety net. For this reason, they should be considered latent assets in contemporary Japanese society. Ironically, filial norms among the middle-aged have been deteriorating since the late 1980s as displayed in Figure 5, and this could be interpreted as partial evidence that elderly parents, despite such deterioration, still, to a considerable extent, remain altruistic toward their children and grandchildren.

Further to our discussion with regard to Figure 13, we have also plotted net familial transfers to the elderly by age and year in Figure 14. The data show an upward shift of the age at which net familial transfers to the elderly become positive. Over the period of two decades, that age rose from 63 years old in 1984, to 64 years old in 1989, 71 years old in 1994, 74 years old in 1999, and 77 years old in 2004. These upward shifts over time seem to be closely related to the improved pension benefits due to the maturity of the pension schemes, but causality is difficult to infer here. It is also interesting to observe in Figure 14 that for any given cohort, the importance of familial transfers does not increase much as the cohort members age. The ratio of net familial transfers to life cycle deficits for the elderly who turned 65 in 1984 remained virtually unchanged, around 0.15, over the subsequent 15 years, until they reached age 80 in 1999. Similar observations are applicable to those who were 70 and 75 in 1984. These plotted results indicate that from a cohort perspective, there is virtually no age gradient. This seems to be accounted for by the inter-cohort differentials in old-age pension maturity levels, which are heavily affected by the age of each cohort at which the universal coverage of public pension schemes was implemented.

In Figure 15, we have plotted the change in the pattern of funding consumption among the two elderly groups (65+ and 85+) from 1984 to 2004. Among those 65 and over, the role of public pensions was becoming increasingly important. In contrast, as has been already mentioned, familial transfers were becoming less important over time. Surprisingly, in 2004, the share of net familial transfers in funding consumption among the elderly aged 65 and over virtually disappeared, although a substantial proportion of the elderly in this age group were still coresiding with their adult children. It should be emphasized, however, that the inflow of

familial transfers from the younger population is still significant among those aged 85 and over. This may be largely due to the fact that the elderly of this old age group receive a relatively limited amount of pension benefits as a result of (1) their shorter contribution period and (2) the dominance of women receiving a survivor's pension in this very old age group.

Moreover, the data plotted in Figure 15 indicate the share of asset-based reallocations has been growing substantially over time, particularly among the relatively young elderly, which is consistent with our earlier discussion in connection with Figure 10. In the case of those aged 65 and over, the proportion of consumption funded by asset-based reallocations grew from 14 percent in 1984 to 36 percent in 2004.

It is also worth remarking that the share of public transfers in the form of medical care services rose to a considerable extent, especially between 1999 and 2004, which is in agreement with our earlier discussion concerning the rise of per capita consumption among the elderly depicted in Figure 6. It is also interesting to observe in Figure 15 that, although declining over time, the share of labor income is considerable, which is consistent with the high labor force participation rate among the elderly population in contemporary Japan.

Concluding Remarks

In this paper, we have analyzed some of the important impacts of Japan's unprecedented population aging on its postwar economy, by drawing heavily upon estimates from the NTA-Japan project, ranging from the first and second demographic dividends to lifecycle reallocations. We have also shed light on the rapidly changing roles of public and familial support systems for the elderly in Japan, that have evolved together with the family organizational transformation and the rapid development of the social security system over the past several decades.

As extensively discussed in the literature, Japan's demographic landscape in the 21st century is extremely gloomy. In hope of raising marital fertility to alleviate the burden of rapid population aging on the economy, the Japanese government has formulated and implemented a series of pronatalist programs and policies since the early 1990s (Ogawa and Retherford, 1993; Retherford and Ogawa, 2006). And yet, despite such strenuous efforts, the country's fertility remains very low. Judging from the extensive experience of many industrialized countries in the West, there is no apparent panacea for restoring fertility to the replacement level. Moreover, the use of immigration measures is inconceivable in contemporary Japanese society. In view of the

results of various recent opinion surveys on the importation of unskilled foreign workers to Japan, it seems safe to say that the introduction of a large-scale immigration policy in Japan is a rather remote possibility. In contrast to this, although the awareness of the two demographic dividends is still fairly limited in Japan, their effective use, particularly that of the accumulated second demographic dividend which is likely to remain substantial for the next few decades, appears to be an attractive policy option for Japan to resume steady economic growth.

One crucial question remains: how can Japanese elderly make use of their accumulated wealth? Depending upon where they invest their financial resources, Japan's future economic growth performance is prone to differ considerably. If Japanese elderly persons are provided with sufficient knowledge about the dynamics of the financial market, they may have a good potential for investing their accumulated assets possibly outside Japan. Moreover, the timing of the first demographic dividend for selected Asian countries varies considerably, as presented in Figure 16. As examined earlier, Japan's first dividend ended in 1979. In contrast, in the case of China, for instance, the first dividend lasts for 41 years from 1973 to 2014. In an era of globalization, the healthier and wealthier among the Japanese elderly will have the opportunity to invest their assets in a dynamically growing Chinese economy, and bring financial gains back to Japan. Obviously, to facilitate such international transactions, proper institutional and legal arrangements need to be developed to protect elderly investors.

In contemporary Japan, the elderly are generally considered to be liabilities. However, the analyses developed in this paper indicate that the Japanese elderly represent a powerful asset to keep the country on a sound and steady growth path in the years to come. Furthermore, over the past decade or so, they have been informally playing the role of the society's safety net by providing financial assistance to their adult children and grandchildren suffering from financial difficulties.

In addition, as discussed elsewhere (Ogawa and Matsukura, 2007), the number of healthy elderly persons in Japan is expected to increase significantly in the years ahead, and their educational attainment will be higher than that of the elderly in the past. In other words, Japan's future elderly will possess a substantial proportion of both the country's human and financial resources.

Before closing this paper, it seems appropriate to offer a few words of caution concerning the interpretation of some of the numerical results computed from the NTA-Japan project. First, as pointed out earlier, bequests and other capital transfers are an important flow not included in

the present paper. Estimating these flows is a difficult task but one that we hope to address in future work.

Second, although private-sector information derived from the five rounds of the *National Survey of Family Income and Expenditure* (NSFIE) from 1984~2004 is one of the most vital inputs in the NTA-Japan project, the data derived from the NSFIE have limitations. For instance, although there are significant seasonal variations in the consumption pattern, each round of the NSFIE covers only three months of the year (i.e., from September to November). Therefore, familial transfers in the form of wedding gifts, monetary contributions in case of death, financial assistance for university tuitions and housing, etc. may be rather poorly captured in the survey, which makes the estimates of familial transfers less reliable. Despite these data limitations, adult children are almost certainly contributing substantially less to their elderly parents through familial transfers than in 1984.

Acknowledgements

Research for this paper was funded by two grants from the National Institute of Health, NIA R01-AG025488 and AG025247. This work was also supported by a grant obtained by the Nihon University Population Research Institute from the “Academic Frontier Project for Private Universities”, a matching fund subsidy from MEXT (Ministry of Education, Culture, Sports, Science and Technology), 2006-2010. Furthermore, the authors are grateful to the UNFPA (RAS5P203) and the Japan Medical Association for their financial assistance.

References

- Bloom, David E., and Jeffrey G. Williamson. 1998. Demographic transitions and economic miracles in emerging Asia. *World Bank Review* 12: 419-456.
- Clark, Robert L., Naohiro Ogawa, Sang-Hyop Lee, and Rikiya Matsukura. 2008. Older workers and national productivity in Japan. *Population Development Review* supplement to vol. 34: 257-274.
- Ermisch, John. 2003. *An Economic Analysis of the Family*. New Jersey: Princeton University Press.
- Gollin, Douglas. 2002. Getting income shares right. *Journal of Political Economy* 110: 458-474.
- Hodge, Robert, and Naohiro Ogawa. 1991. *Fertility Change in Contemporary Japan*. Chicago: University of Chicago Press.
- International Institute for Management Development. 2008. *IMD World Competitiveness Yearbook 2008*. Lausanne.
- Japan Institute of Labour Policy and Training. 2004. *Law Concerning Stabilization of Employment of Older Persons*.
- Lutz, Wolfgang, Warren Sanderson, and Sergei Scherbov. 2004. *The End of World Population Growth in the 21st Century: New Challenges for Human Capital Formation and Sustainable Development*. London and Sterling, VA: Earthscan.
- Mason, Andrew (ed.). 2001. *Population Change and Economic Development in East Asia: Challenges Met, and Opportunities Seized*. Stanford: Stanford University Press.
- Mason, Andrew. 2007. Demographic transition and demographic dividends in developed and developing countries, *United Nations Expert Group Meeting on Social and Economic Implications of Changing Population Age Structure*, New York: United Nations, 81-102.
- Mason, Andrew, and Ronald Lee. 2006. Reform and support systems for the elderly in developing countries: capturing the second demographic dividend. *Genus* 62, 2: 11-35.
- Mason, Andrew, and Ronald Lee. 2007. Transfers, capital and consumption over the demographic transition. In Robert L. Clark, Naohiro Ogawa, and A. Mason (eds.), *Population Aging, Intergenerational Transfers and the Macroeconomy*. Northampton, Massachusetts: Edward Elgar, 128-162.
- MacKellar, Landis. 2003. The predicament of population aging: a review essay. *Vienna*

Yearbook of Population Research 2003: 73-99.

McDonald, Peter. 2008 forthcoming. Explanations of low fertility in East Asia in comparative perspective. In Gavin Jones (ed.), *Ultra-low Fertility in Pacific Asia: Trends, Causes and Policy Dilemma*. London: Taylor and Francis.

Matsukura, Rikiya, Naohiro Ogawa, and Robert L. Clark. 2007. Analysis of employment patterns and the changing demographic structure of Japan. *The Japanese Economy* 34: 82-153.

National Institute of Population and Social Security Research. 2007. *Social Security Benefits for Fiscal Year 2007*.

Organisation of Economic Co-operation and Development. 2005. *Recommendation on Principles and Good Practices for Financial Education and Awareness*. Paris: OECD.

Organisation of Economic Co-operation and Development. 2007. *OECD Health DATA 2007*. Paris: OECD.

Ogawa, Naohiro. 2003. Japan's changing fertility mechanisms and its policy responses. *Journal of Population Research* 20: 89-106.

Ogawa, Naohiro. 2005. Population aging and policy options for a sustainable future: the case of Japan. *Genus* 61: 369-410.

Ogawa, Naohiro and Robert D. Retherford. 1993. The resumption of fertility decline in Japan: 1973-92, *Population and Development Review* 19, 4: 703-741.

Ogawa, Naohiro and Jeffrey F. Ermisch. 1996. Family structure, home time demands, and the employment patterns of Japanese married women. *Journal of Labor Economics* 14: 677-702.

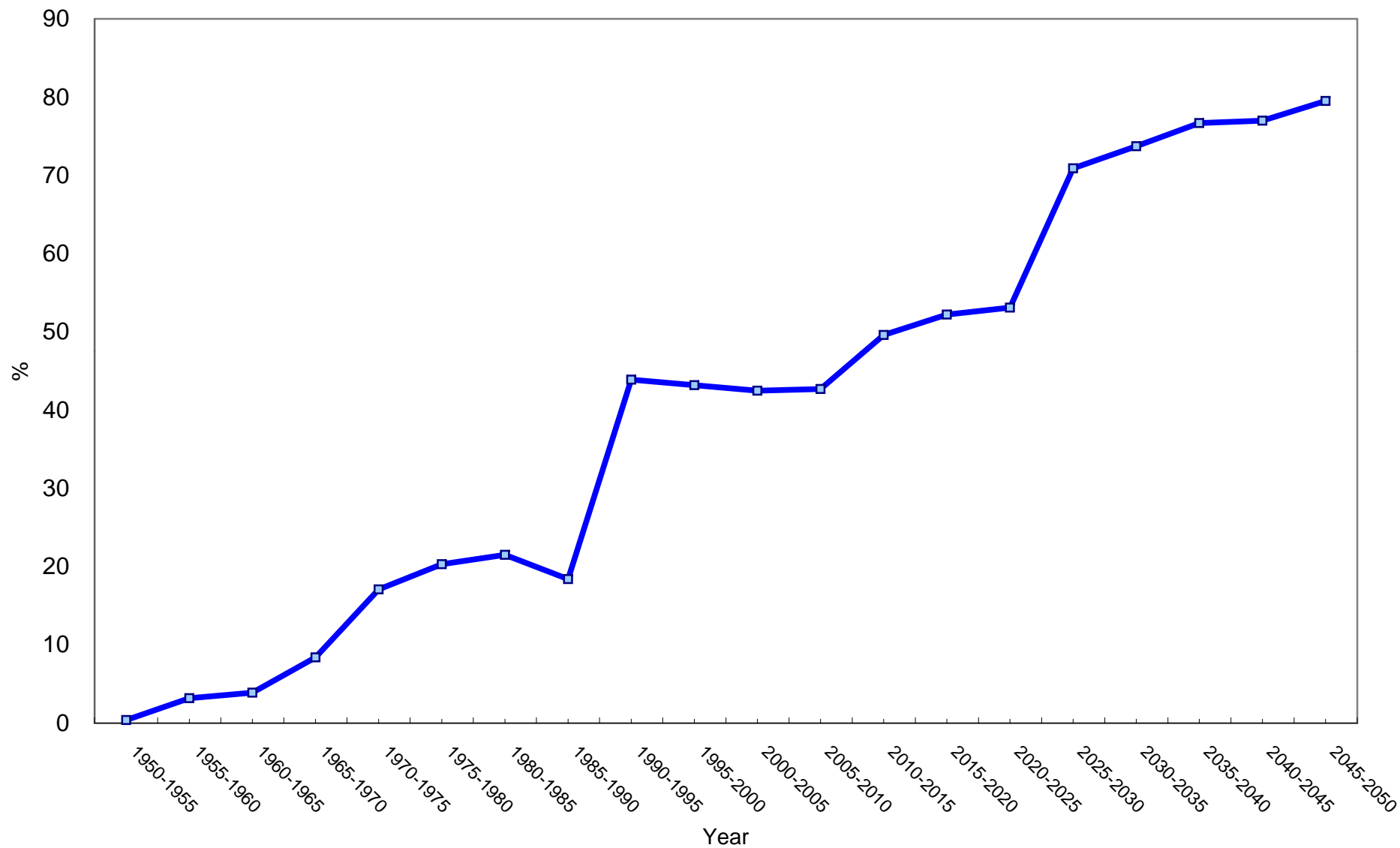
Ogawa, Naohiro and Robert. D. Retherford. 1997. Shifting costs of caring for the elderly back to families in Japan, *Population Development Reviews* 23, 1: 59-94.

Ogawa, Naohiro, Makoto Kondo, Masao Tamura, Rikiya Matsukura, Tomiko Saito, Andrew. Mason, Shripad Tuljapurkar, and Nan Li. 2003. *Long-term Perspectives for Japan: An Analysis Based on A Macroeconomic-Demographic-Social Security Model with Emphasis on Human Capital*. Tokyo: Nihon University Population Research Institute.

- Ogawa, Naohiro, Sang-Hyop Lee, and Rikiya Matsukura. 2005. Health and its impact on work and dependency among the elderly in Japan. *Asian Population Studies* 1: 121-145.
- Ogawa, Naohiro and Rikiya Matsukura. 2007. Ageing in Japan: the health and wealth of older persons, *United Nations Expert Group Meeting on Social and Economic Implications of Changing Population Age Structures*, New York: United Nations, 199-220.
- Ogawa, Naohiro, Andrew Mason, Maliki, Rikiya Matsukura, and Kazuro Nemoto. 2007. Population aging and health care spending in Japan: public- and private-sector responses. In R.L.Clark, N. Ogawa, and A. Mason (eds.), *Population Aging, Intergenerational Transfers and the Macroeconomy*. Northampton, Massachusetts: Edward Elgar, 192-223.
- Ogawa, Naohiro, Robert D. Retherford, and Rikiya Matsukura. 2008 forthcoming. Japan's declining fertility and policy responses. In Gavin Jones (ed.), *Ultra-low Fertility in Pacific Asia: Trends, Causes and Policy Dilemma*. London: Taylor and Francis.
- Population Problems Research Council. 2004. *National Survey on Population, Families and Generations*. Tokyo: Mainichi Newspapers.
- Retherford, Robert D., and Naohiro Ogawa. 2006. Japan's baby bust: causes, implications, and policy responses. In Fred R. Harris (ed.), *The Baby Bust: Who Will Do the Work? Who Will Pay the Taxes?* Lanham: Rowman & Littlefield Publishers, Inc., 5-47.
- Sakamoto, Junichi. 2005. Population challenges and social security—the case of Japan. Paper presented at the Forum on Population and Development in East Asia, May 16-17, in Beijing, China.
- The Asahi Shimbun. 2007. Life insurance premiums to drop in April. March 10.
- The Nikkei, 2007. Law prompts banks to heighten protection for elderly customers. October 1.
- The Nikkei, 2008a. Annuity, medical insurance contracts top life policies. June 24.
- The Nikkei. 2008b. 57% say pension payouts not enough for living expenses. May 13.
- United Nations. 2007. *World Population Prospects: The 2006 Revision*. New York: United Nations.
- Washington Post. 2008. Japan steadily becoming a land of few children. May 6.

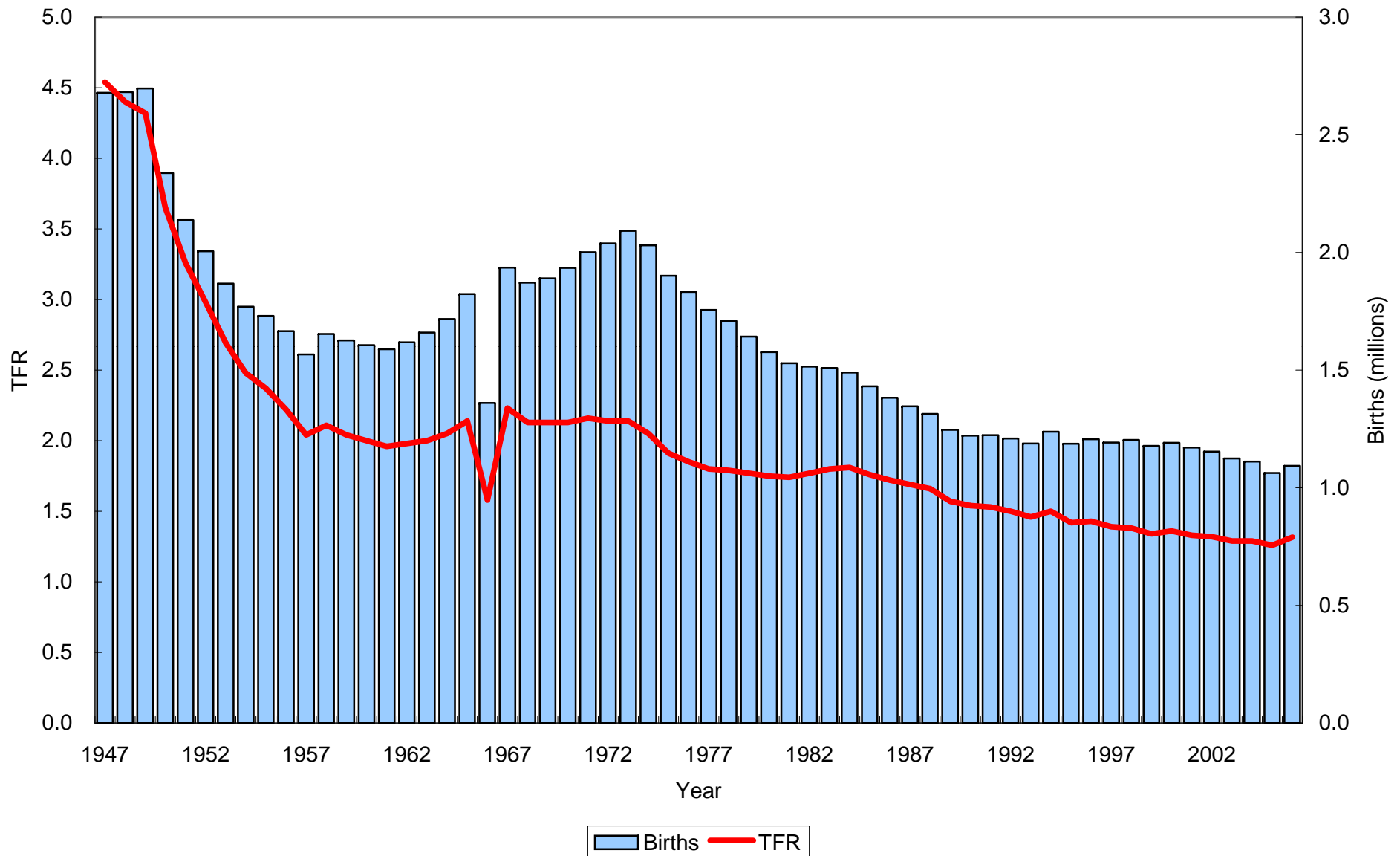
Yoshikawa, Hiroshi. 2001. *Japan's Lost Decade*. Tokyo: International House of Japan.

Figure 1. Proportion of population with below-replacement fertility in the world population: 1950-2050



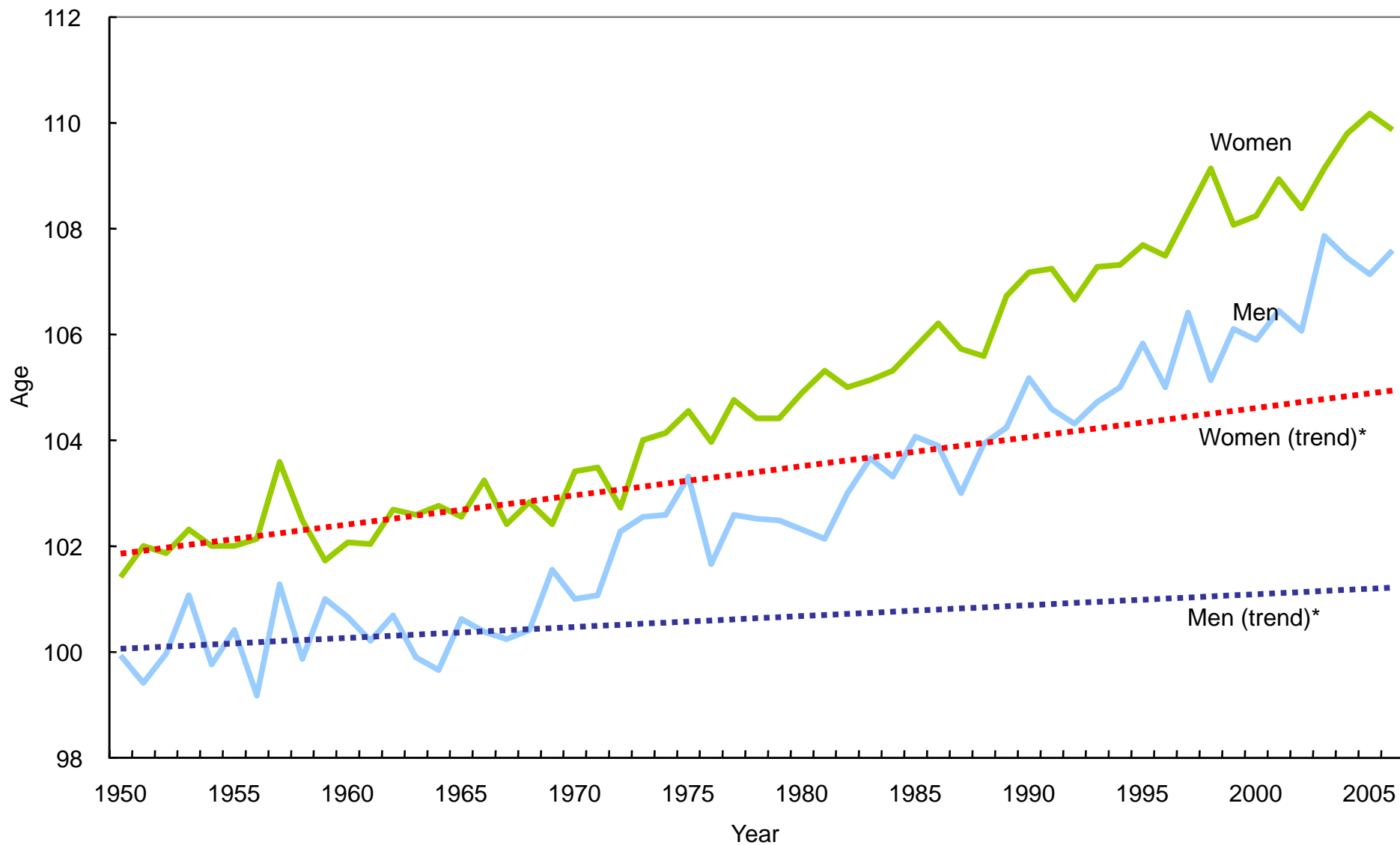
Source: United Nations, *Population Prospects* 2006, 2007.

Figure 2. Trends in number of births and TFR: Japan, 1947-2006



Source: Ministry of Health, Labour and Welfare, *Vital Statistics*, various years.

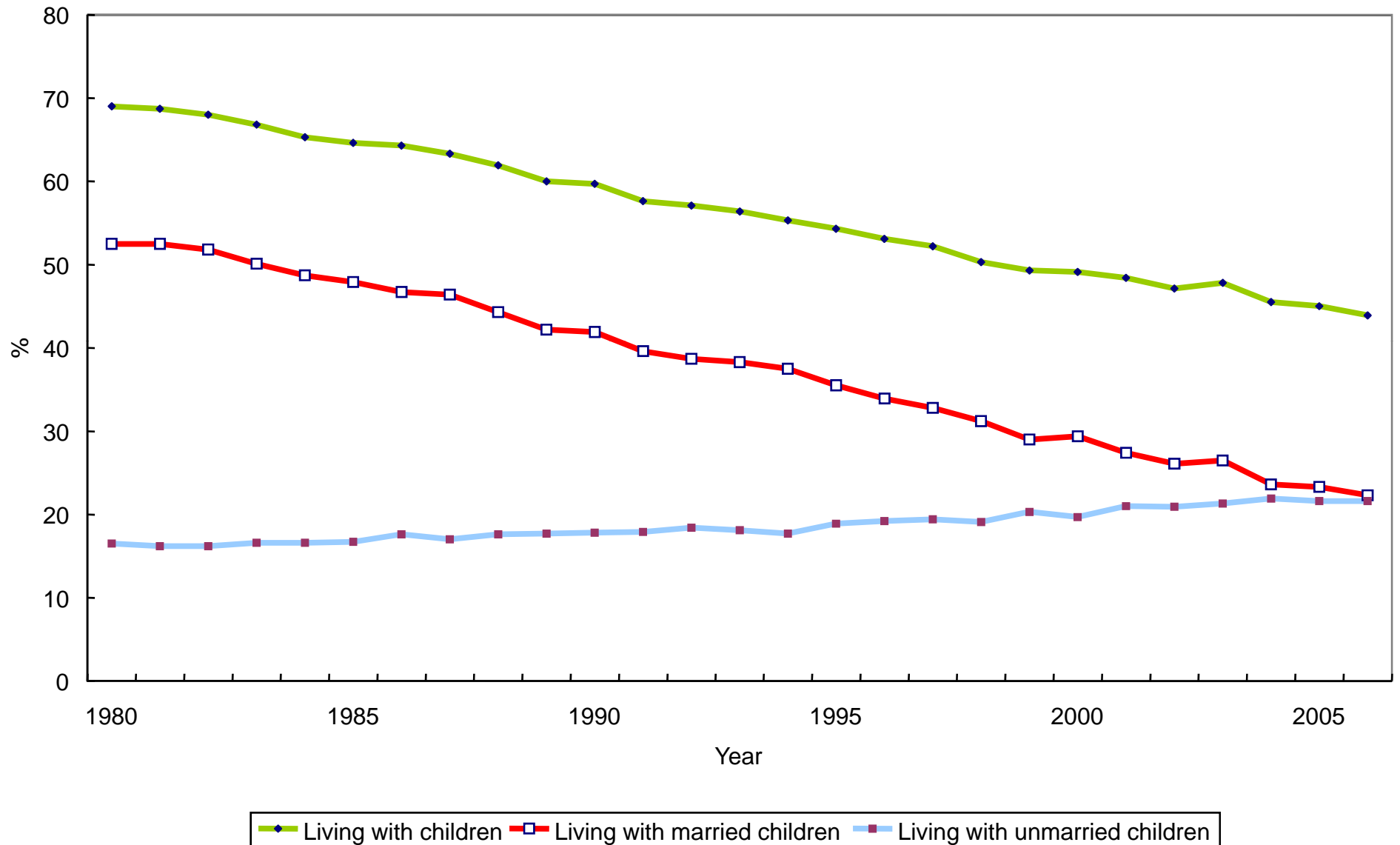
Figure 3. Change in average age of death among 30 oldest persons by sex:
Japan, 1950-2006



* The trend lines for men and women have been estimated on the data from 1950 to 1968.

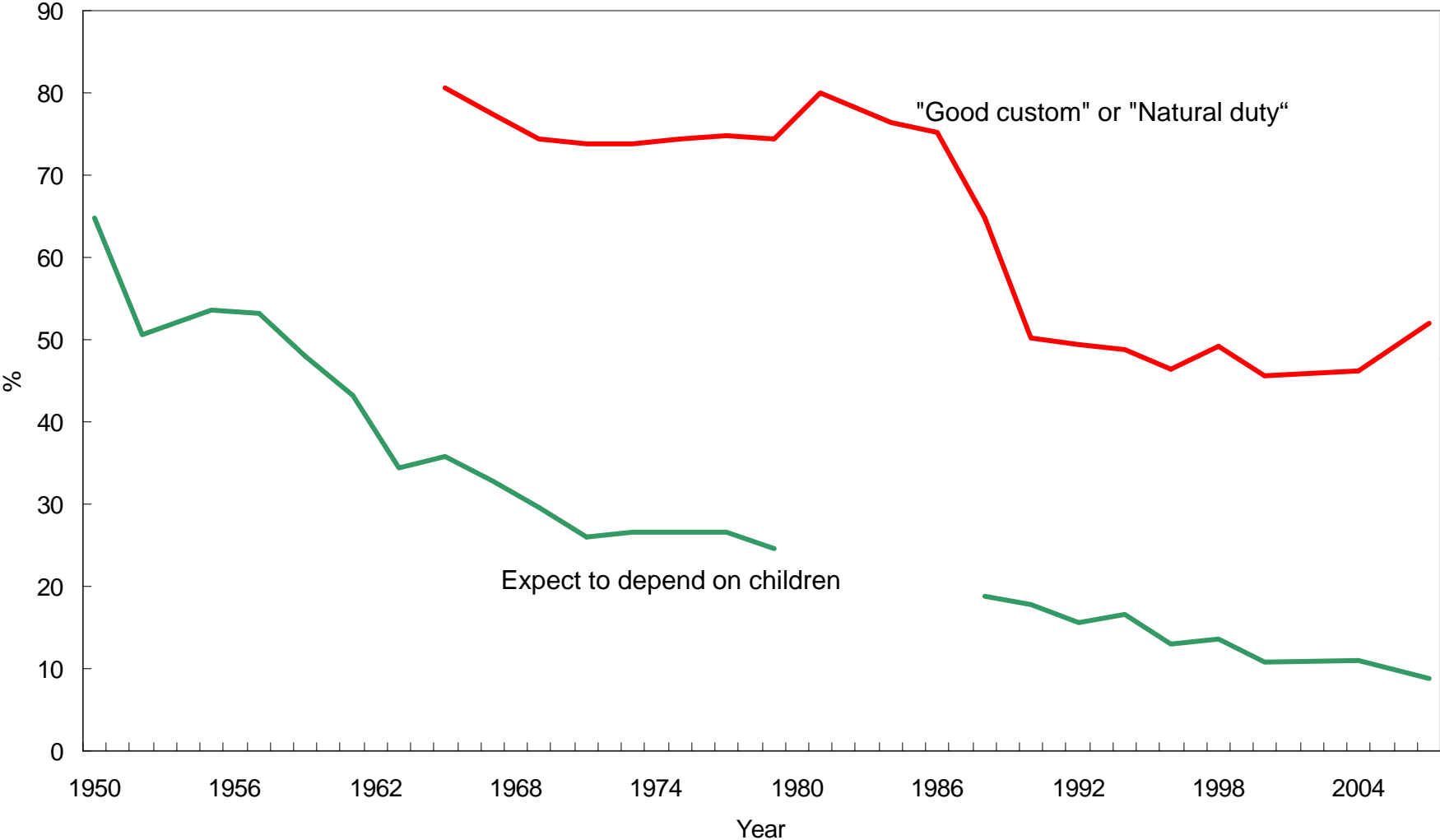
Source: Ministry of Health, Labour and Welfare, *Vital Statistics*, various years.

Figure 4. Change in proportion of those age 65 and over coresiding with their adult children: Japan, 1980-2006



Source: Ministry of Health, Labour and Welfare, *Comprehensive Survey of Living Conditions of the People: Health and Welfare*, various years.

Figure 5. Trends in values and expectations about care for the elderly: Japan, 1950-2007



Sources: Mainichi Newspapers of Japan, *Summary of Twenty-fifth National Survey on Family Planning, 20005*.

Mainichi Newspapers of Japan, *Summary of the 2004 round of the National Survey on Population, Families and Generations, 2004*.

Nihon University Population Research Institute, *National Survey on Work and Family, 2007*.

Figure 6. Age-specific profiles of per capita consumption and production: Japan, 1984-2004

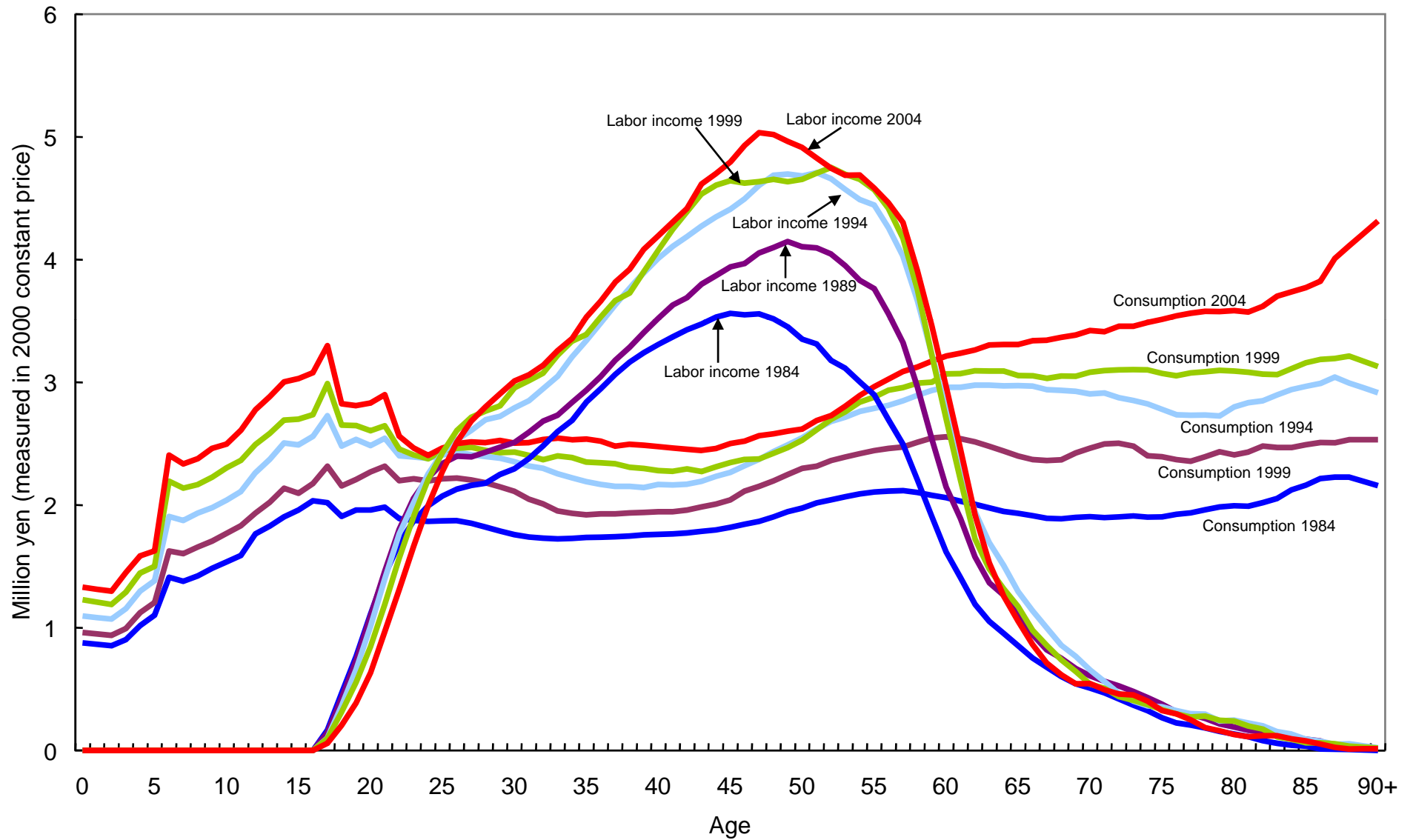


Figure 7. Average age-specific profiles of per capita consumption and production: 1984-2004

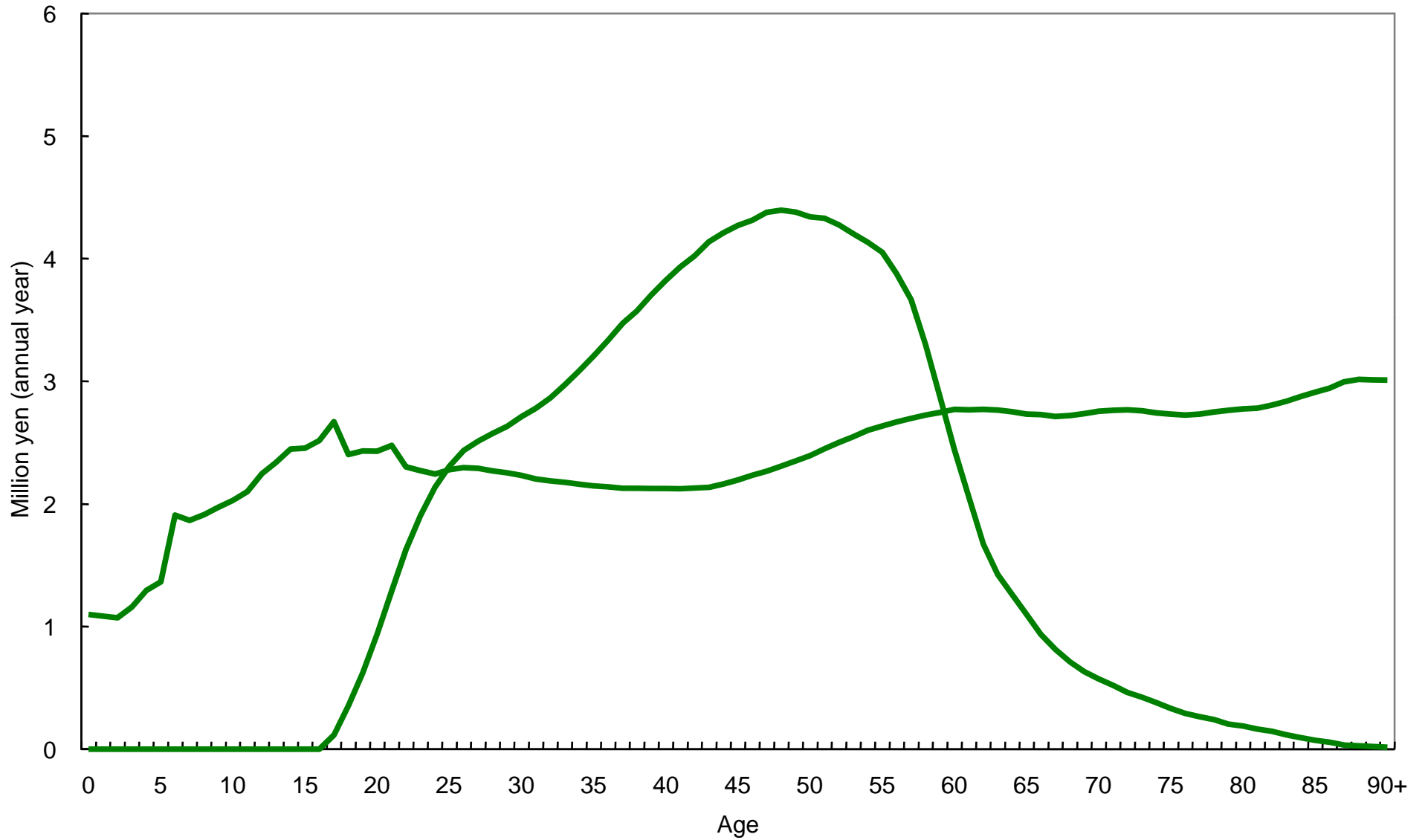


Figure 8. Trend in first dividend: Japan, 1925-2025

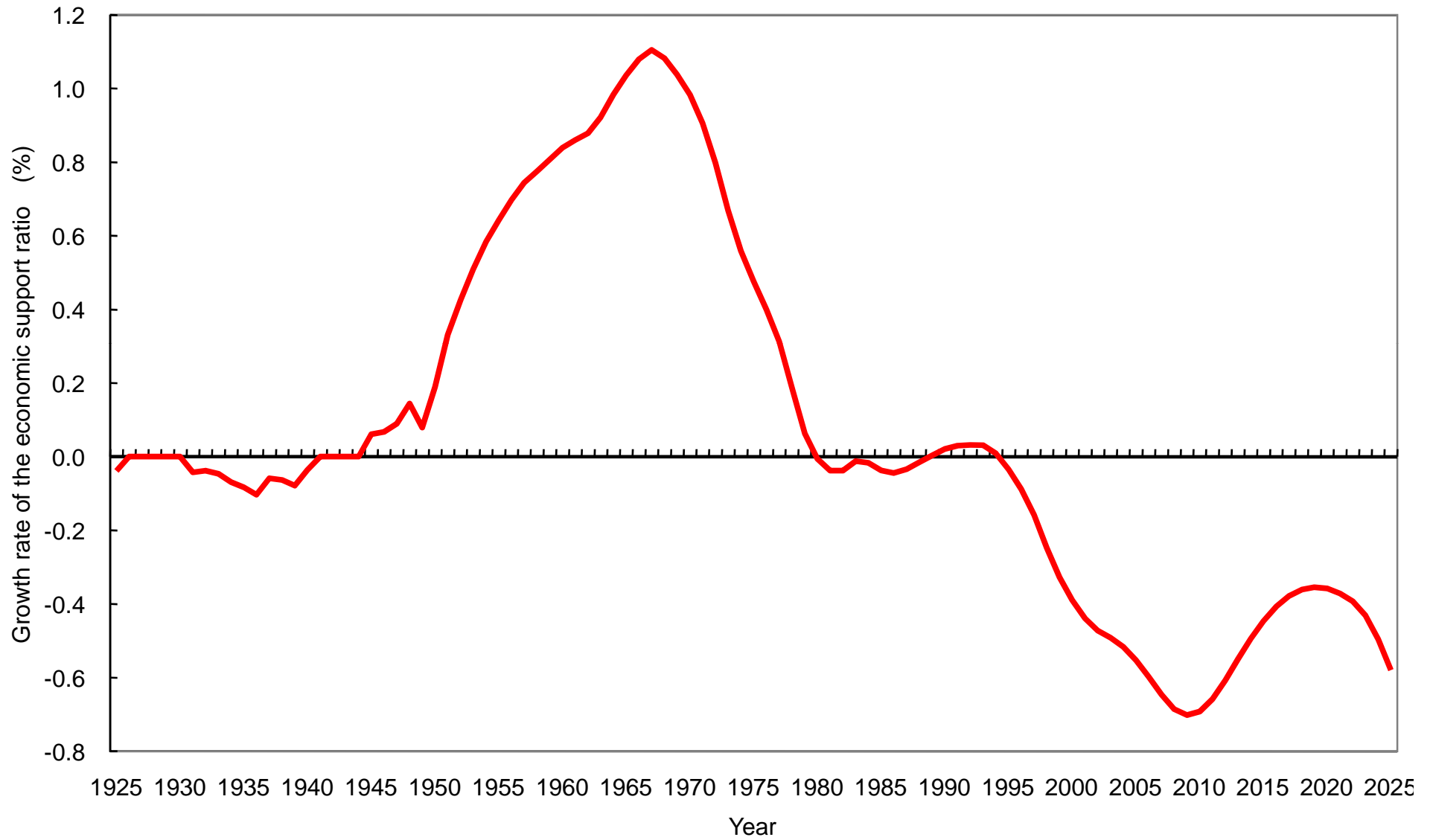


Figure 9. Trend in second dividend: Japan, 1960-2035

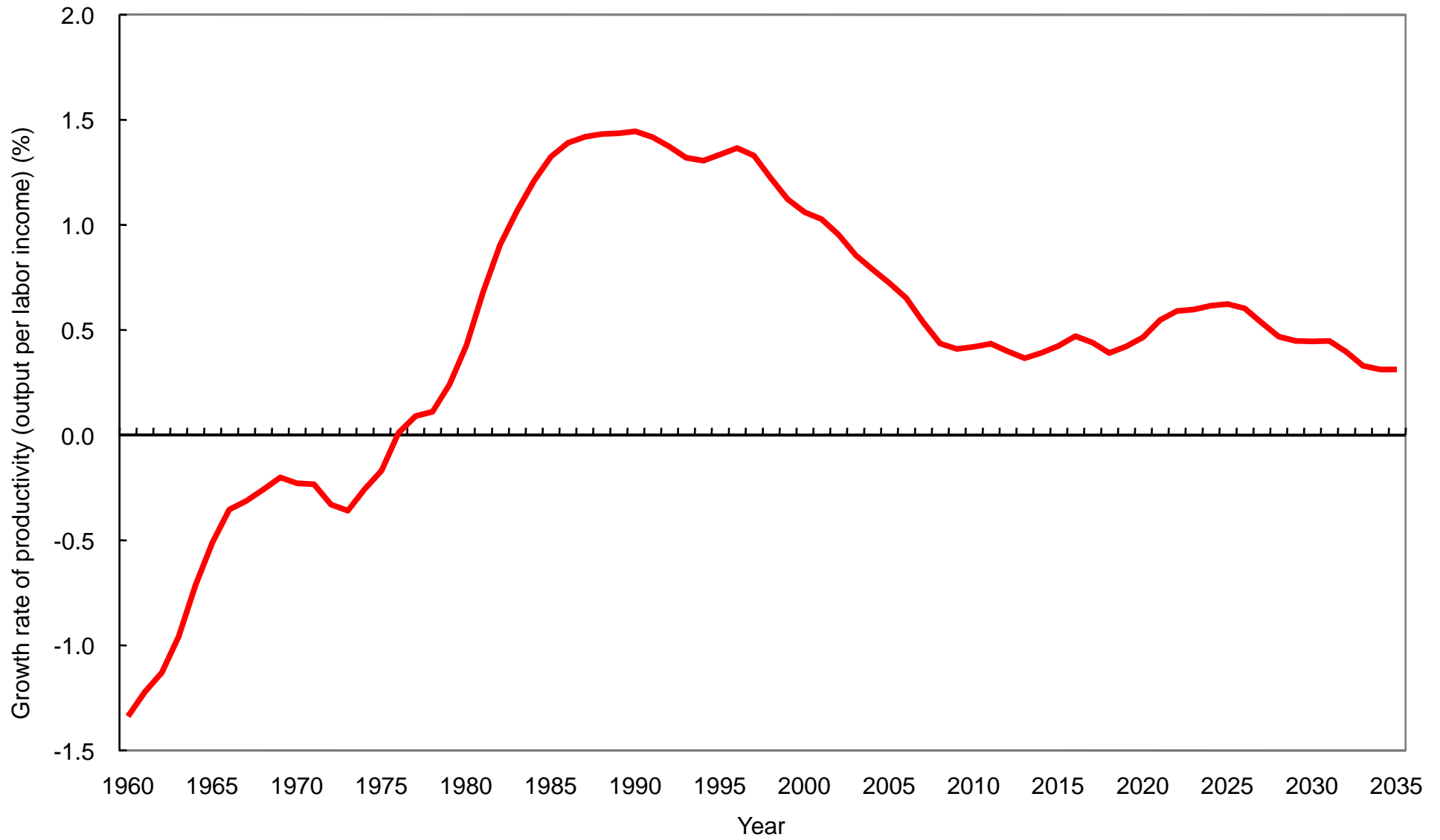


Figure 10. Age profile of asset and pension wealth transfers in Japan, 1999

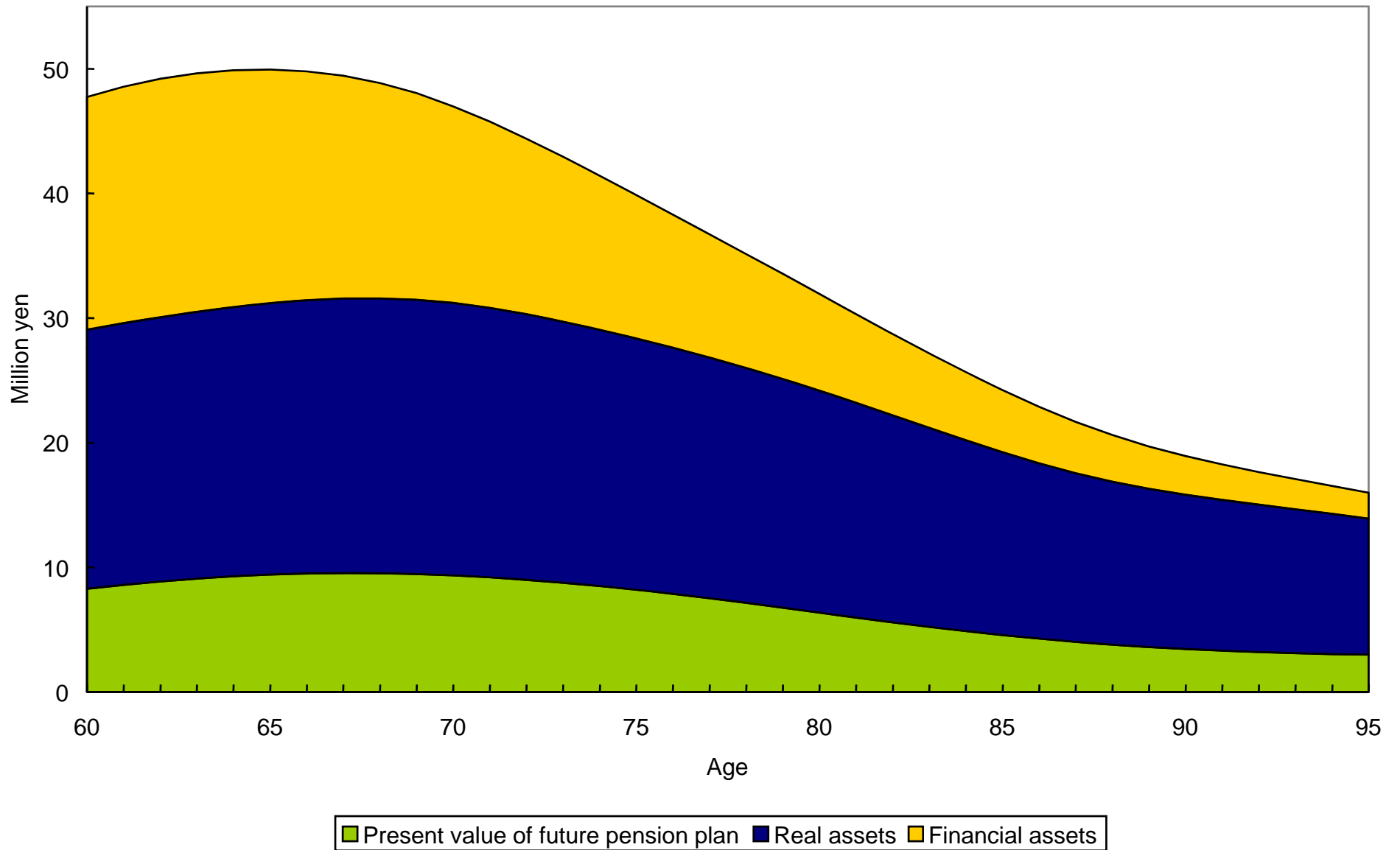
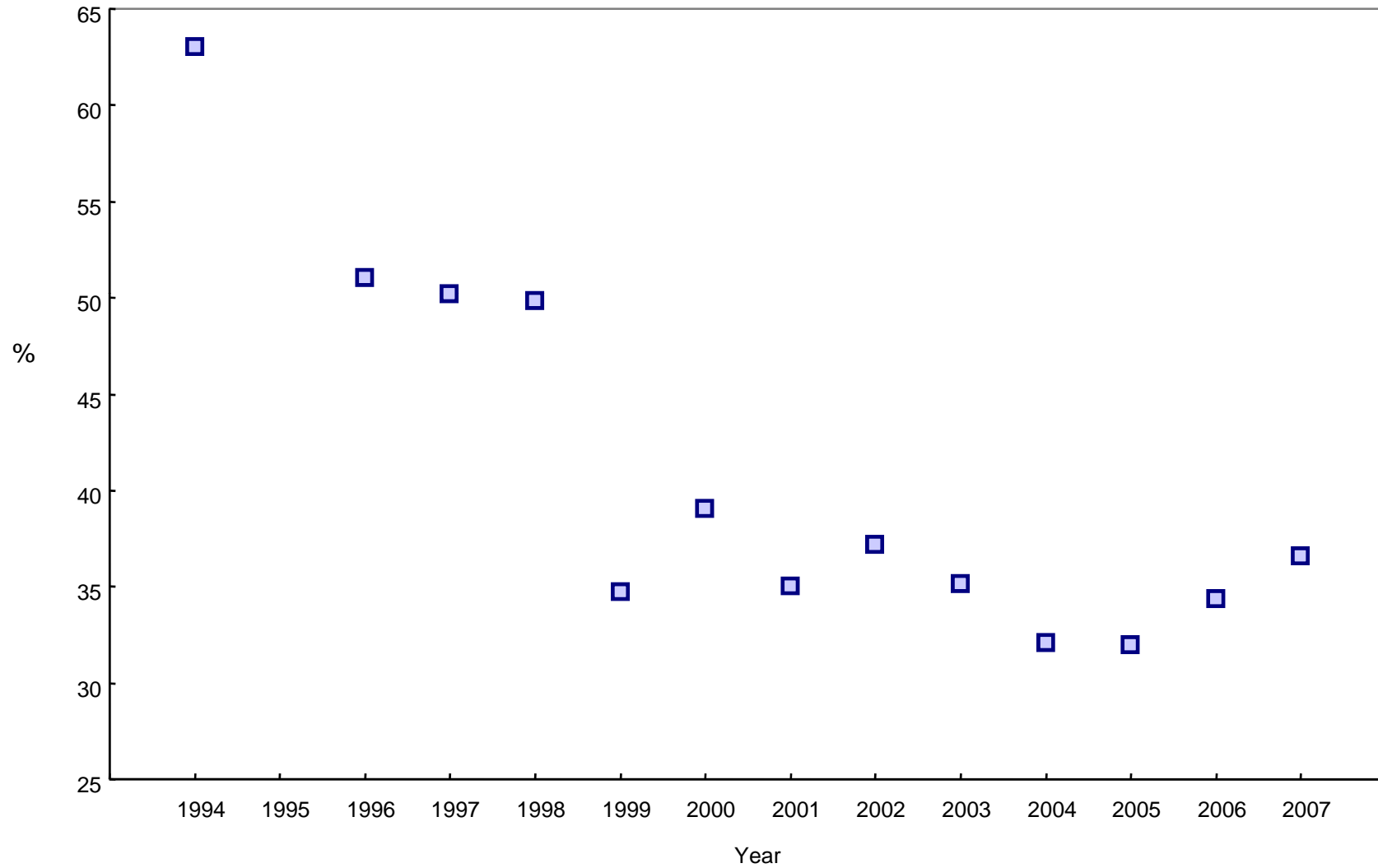


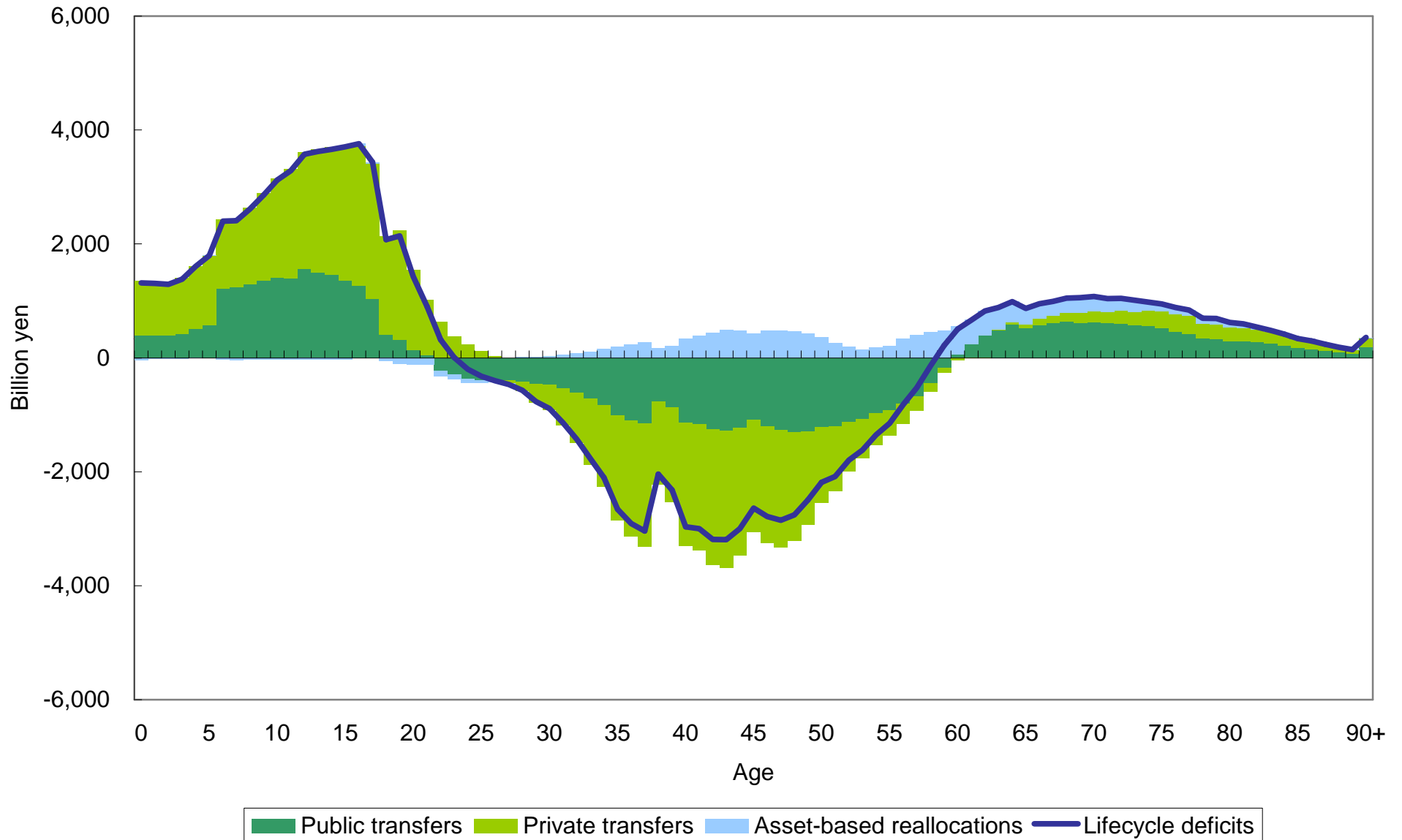
Figure 11. Changing preference for land as an assets among the elderly aged 60 and over:
Japan, 1994-2007



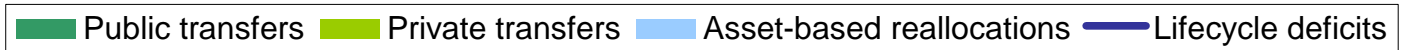
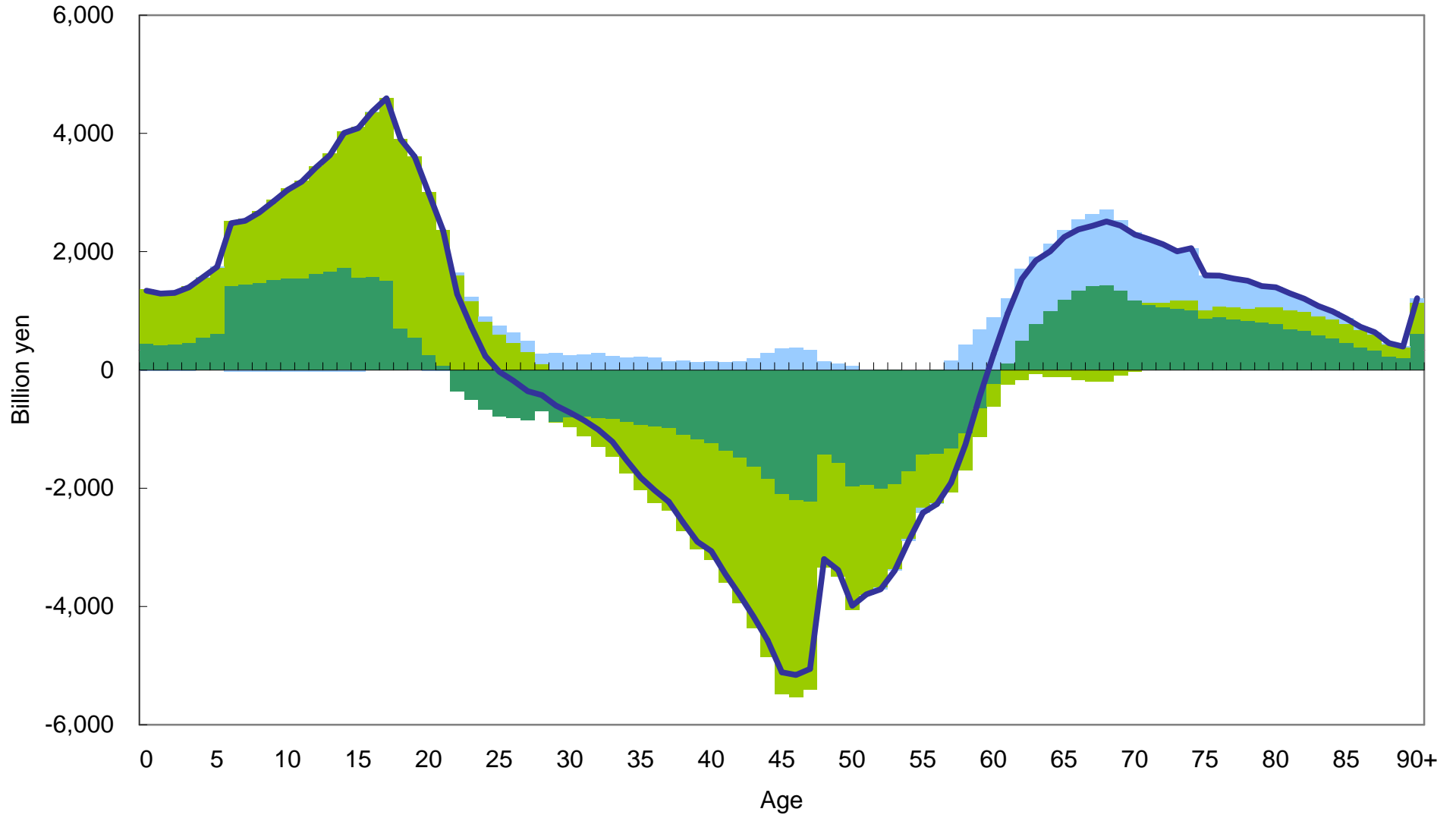
Source: Ministry of Land, Infrastructure, Transport and Tourism, National Opinion Survey on Land Issues, 2007.

Figure 12. Changing pattern of three components of reallocations: Japan, 1984-2004

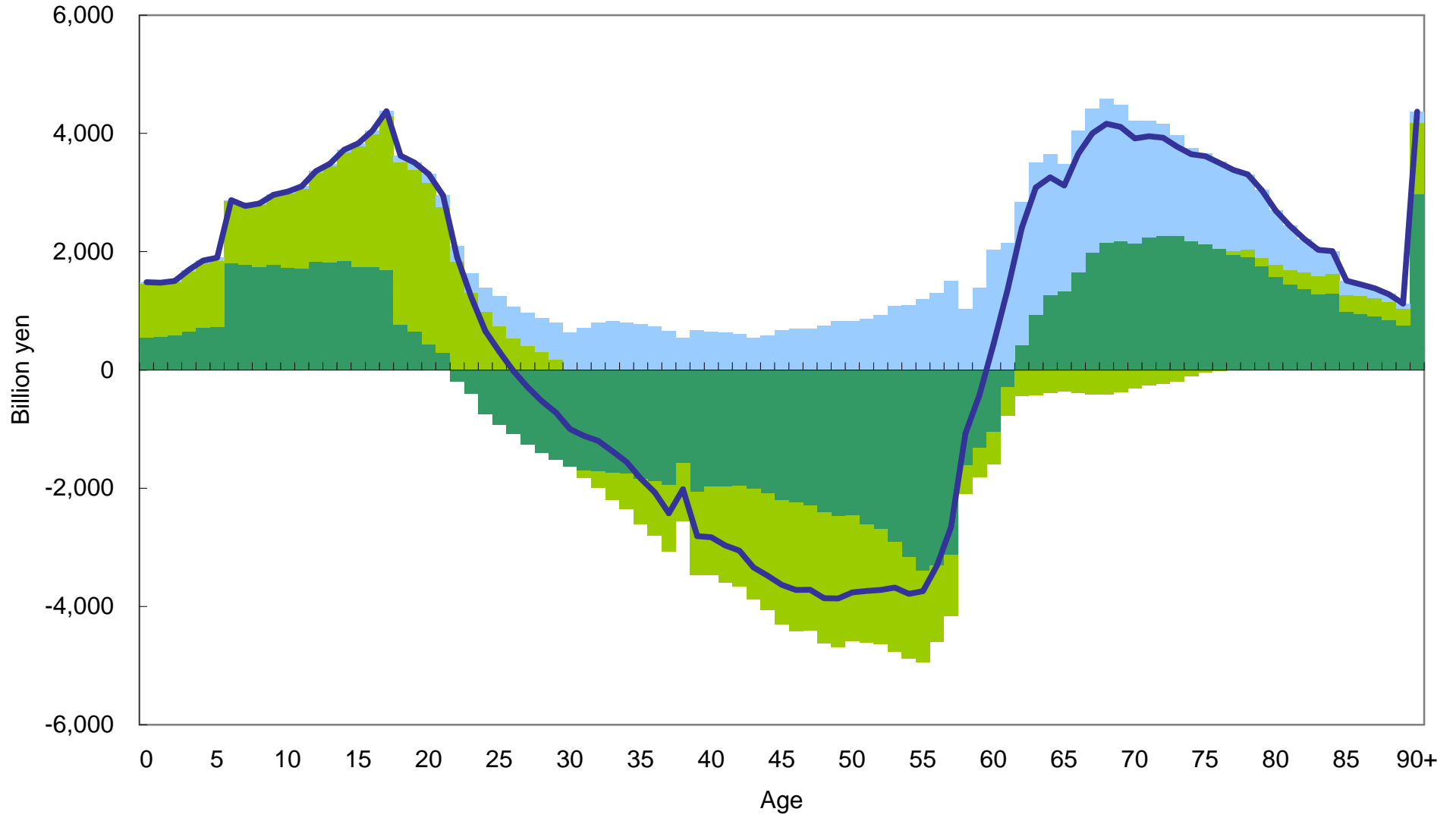
Panel A: 1984



Panel B: 1994



Panel C: 2004



Public transfers Private transfers Asset-based reallocations Lifecycle deficits

Figure 13. Net per capita intra-household transfers between broad age groups, 2004

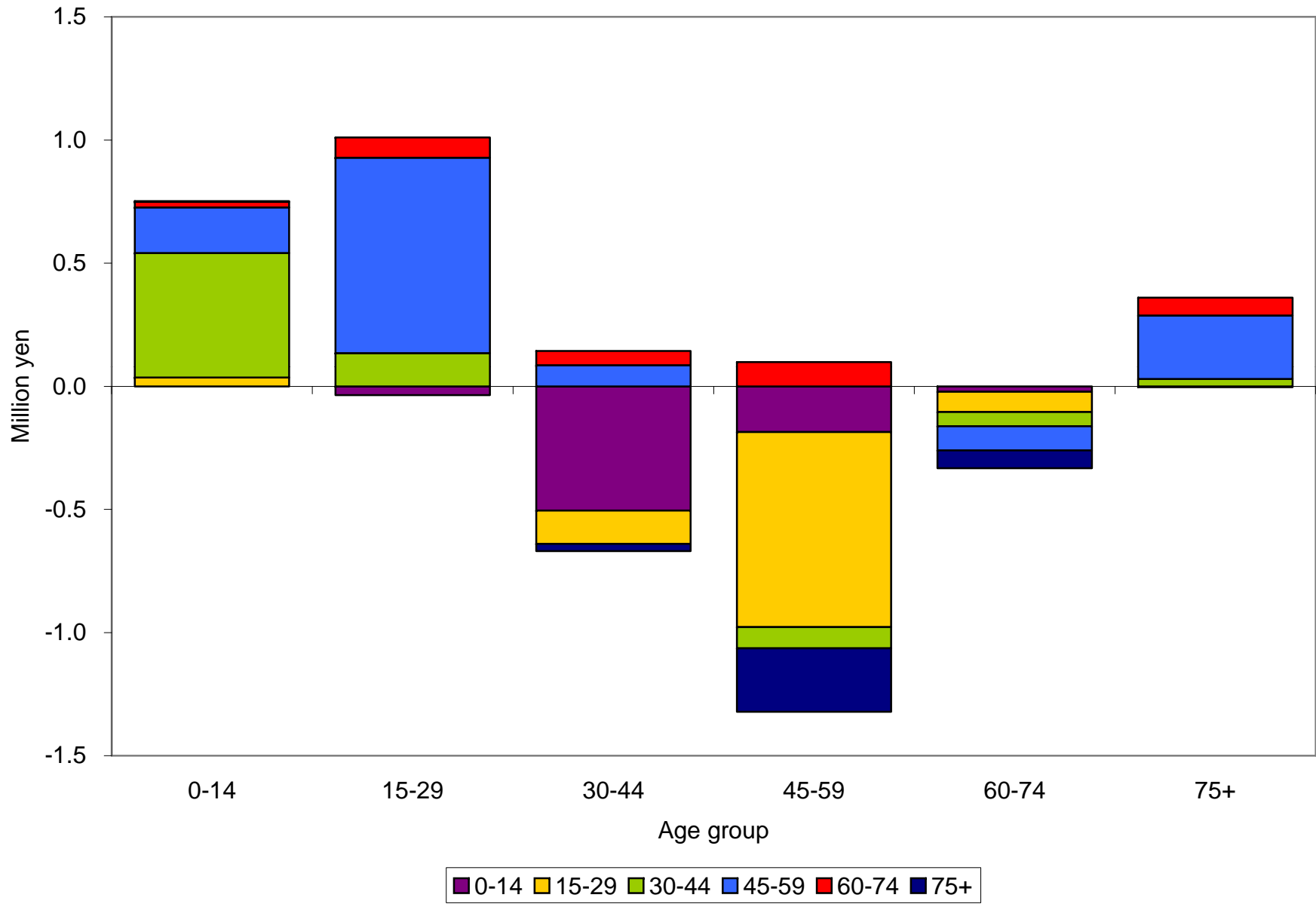


Figure 14. Net familial transfers, 65 and older: Japan, 1984-2004

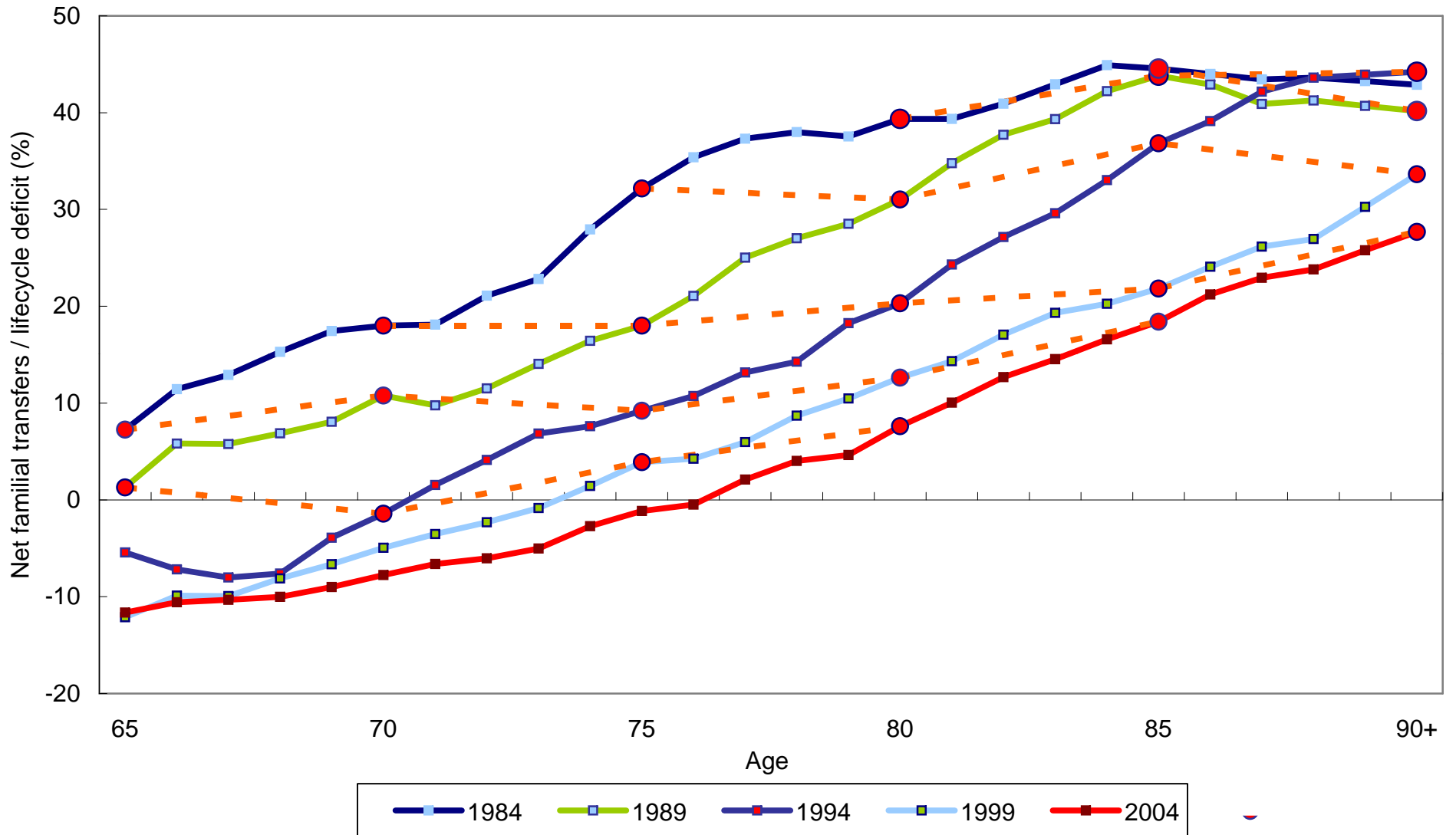


Figure 15. Change in the pattern of financing consumption among the two elderly groups: Japan, 1984-2004

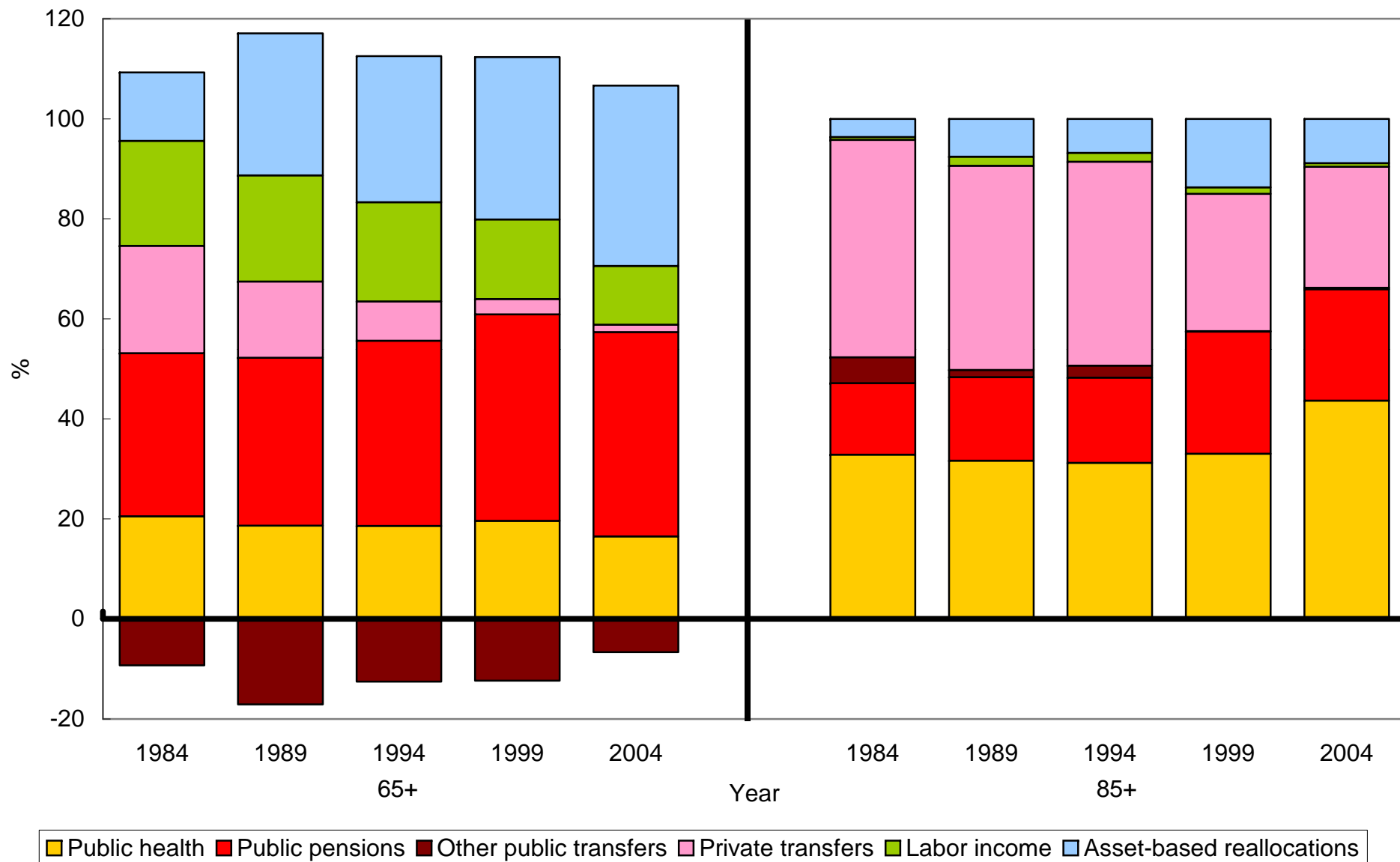


Figure 16. First demographic dividend in selected Asian countries, 1950-2050

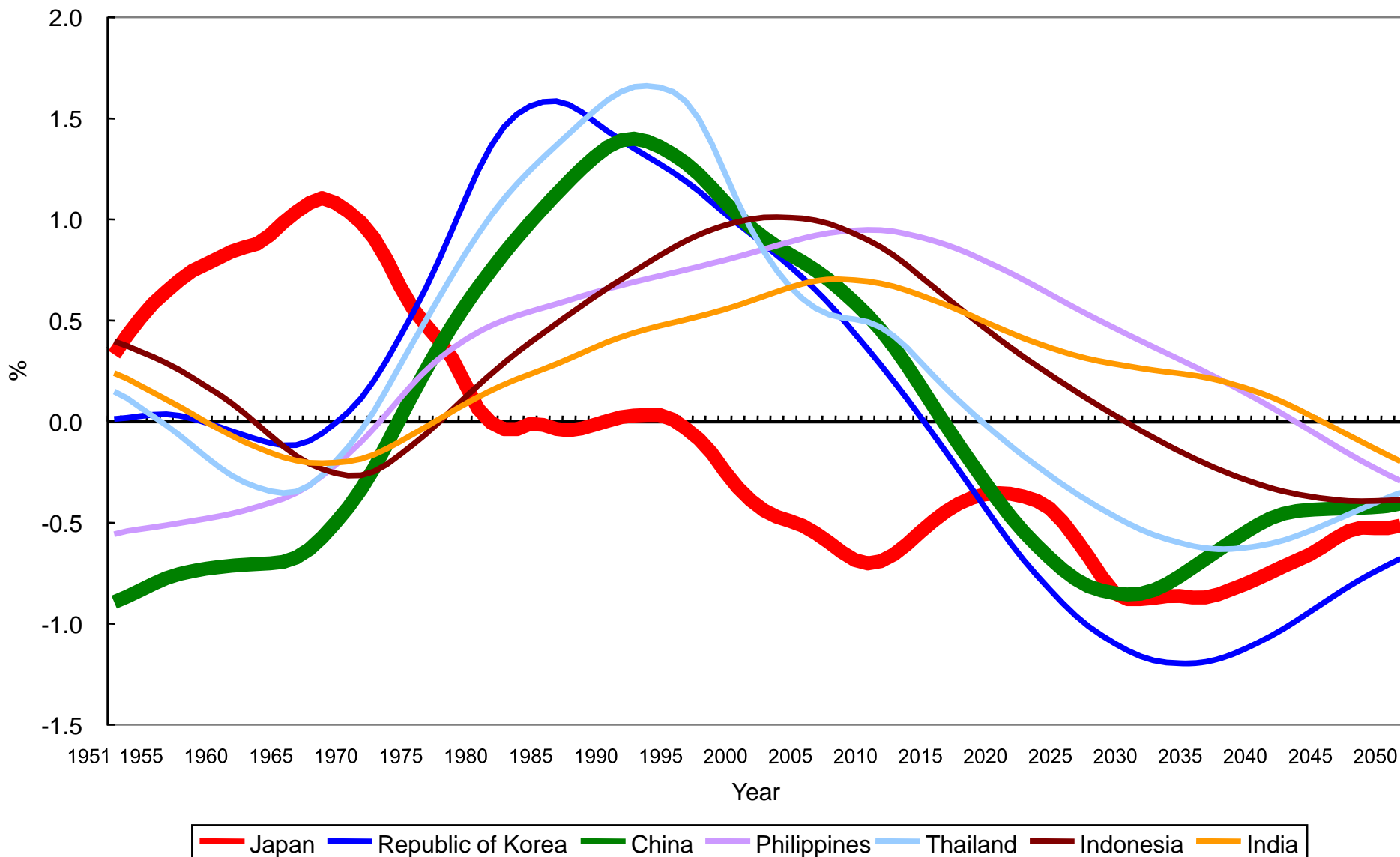


Table 1. Population change in Japan: 1950-2025

Year	Total population (1000 persons)	0-14(%)	65+(%)	Total Fertility Rate	Total Dependency Ratio	75+/65+(%)	Women 40-59/65-84
1950	83200	35.4	4.9	3.65	67.5	25.7	1.82
1955	89276	33.4	5.3	2.37	63.1	29.2	1.81
1960	93419	33.0	5.7	2.00	60.4	30.4	1.80
1965	98275	25.6	6.3	2.14	46.8	30.3	1.77
1970	103720	23.9	7.1	2.13	44.9	30.2	1.69
1975	111940	24.3	7.9	1.91	47.6	32.0	1.60
1980	117060	23.5	9.1	1.75	48.4	34.4	1.48
1985	121049	21.5	10.3	1.76	46.7	37.8	1.40
1990	123611	18.2	12.1	1.54	43.5	40.1	1.30
1995	125570	16.0	14.6	1.42	50.4	39.3	1.10
2000	126926	14.6	17.4	1.36	46.9	40.9	0.91
2005	127449	13.8	20.2	1.25	50.6	45.1	0.77
2010	127013	13.0	23.0	1.24	55.6	48.0	0.65
2015	125603	12.1	26.9	1.24	63.2	48.4	0.59
2020	123235	11.0	29.5	1.24	67.6	52.1	0.57
2025	120094	10.2	31.0	1.28	70.0	60.0	0.56

Sources: Statistics Bureau, Population Census, various year.

Nihon University Population Research Institute Population Projection, 2003