

This PDF is a selection from an out-of-print volume from the National Bureau of Economic Research

Volume Title: Short-Term Macroeconomic Policy in Latin America

Volume Author/Editor: Jere R. Behrman and James Hanson, eds.

Volume Publisher: NBER

Volume ISBN: 0-88410-489-3

Volume URL: <http://www.nber.org/books/beh79-1>

Publication Date: 1979

Chapter Title: Index

Chapter Author: Jere R. Behrman, James Hanson

Chapter URL: <http://www.nber.org/chapters/c4353>

Chapter pages in book: (p. 356 - 370)

Ag

Al

Al

Al

A

A

A

Index

- Aggregate demand. *See also* Demand equation, 134, 135-136
and inflation, 227, 228-229, 233-234, 235-240
models using in developing countries, 3
and urban unemployment, 12
- Aggregate supply. *See also* Supply for Argentina, 148-150
for Brazil, 148-150
equation, 134-136
- Aggregation, in developing countries, 3-4
- Agricultural sector
and inflation, 230-231
in Chile, 230, 234
in Latin America, 240
in Latin America, inelastic supply in, 227-228
value added increase, 328
- Agriculture, 11
and demand, 238, 239, 240
in Latin America, 230
in Nicaragua, 85
in Panama, 47-53
- Ando, Albert, 4, 5, 22
- Arboledo, H., 40
- Argentina
aggregate supply for, 148-150
data for, 144-145
economy of, and Phillips curve, 201-225
and exchange rates, 221-222
expectations for, 206-211, 218-222
expected inflation in, and Phillips curve, 205-211
expected prices for, 145-148
and foreign sector, 15
Gelbard period in, 212-214, 218-220
incomes policy in, and Phillips curve, 211-215, 218-222
inflation dynamics for, 153-157, 159-163
Krieger-Vasena period in, 212-214, 218-220
model for, 144-163
nominal income, 150-153
output dynamics for, 153-157, 159-163
political trends in, 210-211
price dynamics for, 153-157, 159-163
unions in, and Phillips curve, 211-215, 219
- Assets, 22-24
- Autoregressive integrated average (ARIMA) process, 140, 154, 164*n.2*
- Balance of payments
and capital utilization, 338-346
monetary model of, 258-278
in Nicaragua, 97-98, 101
and shocks, 259
surplus, 24
- Balboa, and U.S. dollar, 41, 67-68
- Bananas, as exports, 43, 304-305
- Banco de Mexico, 119
- Banking system, of Nicaragua, 93-94, 99-100
- Banks, central, 269-274
- Barro, Robert J., 14
on money and output in Mexico, Colombia, and Brazil, 177-199
- Beans, 49

- Beef, exports, 306
- Behrman, Jere, 2
on using econometric models in developing countries, 1-33
Panamanian model, 39-81
- Beltran del Rio, Abel, on econometric forecasting for Mexico, 115-132
- BID Capital Markets program, 24
- Birnberg, Thomas, 18
- Blinder, Alan, 4
- Blitzer, Charles R., 1, 2
- Bonds, government. *See* Government bonds
- Borts, George H., 14, 20
on the monetary approach to the balance of payments, 257-288
- Branson, William, 5, 22
- Brazil
aggregate supply for, 148-150
data for, 144-145
exchange rate of, 193
expected prices for, 145-148
inflation dynamics for, 153-154, 158-163
model for, 144-163
money growth in, 193-197
nominal income, 150-153
output in, 153-154, 158-163, 174-194-197
price dynamics for, 153-154, 158-163
shifts worked, 313
- Brodersohn, Mario S., 14
on the Phillips Curve and the Argentine economy, 201-225
- Bruno, M., 84
- Budget constraints, 270
- Cagan hypothesis of adaptive expectations, 138
- Canal Zone, 42, 46
- Capacity utilization, 2
- Capital,
cost of, 18
formation, in INCAE model of Nicaragua, 84-85
markets in developing countries, 17-18
social overhead. *See* Social overhead capital
utilization in Latin America, 311-352
working, 320, 350
- Central America. *See also* individual countries
balance of payments, 292
- Common Market (MCCA), 86, 293
exports, 301-307
imports to, 299-301
gross domestic product changes in, 297-299
model of external dependence of, 289-309
- Central Bank of Nicaragua, 83, 88, 89, 112
and money levels, 92
regulation by, 93
- Chenery, M.B., 84
- Chicken, 50, 51
- Chile, 26
agricultural sector, inelastic supply in, 227
Behrman's study of, 5
capital utilization in, 316, 321
Corbo's study of, 31n.11
exchange rates, 21-22
exports, 21-22
and foreign sector, 15
Harberger model of inflation in, 229, 240-241
imports, 19
inflation in, 227-255
investment in, 18
model of, 13-14, 30
prices in, 231-232, 243-249
shifts worked in, 338
wages in, 14, 65
- Chilean Klein-Saks stabilization program, 31n.7
- Christ, Carl, 25
- Clark, Sara, 22
- Coffee, exports, 49, 301-303
- Collinearity, problem of, 141-142
- Colombia
capital utilization in, 316
data quality in, 193
exchange rates in, 189
exports, 21, 22
and foreign sector, 15
imports, 21
money growth in, 178-179, 189-192
output in, 179, 192-193
- Common Market, in Central America, 86, 293
- Construction, in Panama, 55, 56, 57
- Consumer price index, in Panama, 62
- Consumption
in developing countries, 16-17
function, 16
private, in Panama, 57-58
- Corn, 48, 51, 52

Cost
ca
ex
Cod
Cre
ar
fl
ir
Cyc
Da
fi
fi
ii
P
E
d
De
a
De
De
Di

D

- Costa Rica, 303
 capital utilization in, 316
 exports, 292
- Cotton, exports, 303-304
- Credit,
 and capital utilization, 325, 349-350
 flow of in Nicaragua, 90
 in Panama, 43, 51, 58-60
- Cyclical downturns, underutilized capacity in, 2
- Data
 for Argentina, 144-145
 for Brazil, 144-145
 improving base, 3
 Panamanian agricultural, 51
 problems, 5, 17
 quality of in Colombia, 193
- Demand, 2
 aggregate. *See* Aggregate demand
 and agriculture, 238, 239, 240
 and capital utilization, 324-325
 for exports in Nicaragua, 90
 and output, 6
 total, in Panama, 57-60
- Demand deposits, in Panama, 68, 69
- Demand-pull variables, 240-241
- de Pablo, Juan Carlos, 220
- Developed countries
 financial markets in, 22-24
 growth in, 2
 import equations in, 19-20
 lags in, 113n.4
 models, 3, 6, 26-27, 115
 product market and aggregate demand in, 16
- Developing countries
 consumption in, 16-17
 demand in, 2
 export equation in, 20-22
 government expenditure in, 18-19
 growth in, 2
 investment in, 17-18, 58
 lags in, 113n.4
 tax equations in, 24-25
 using models of, 1-30
- Díaz Alejandro, Carlos F., 20, 22, 222
- Diemex-Wharton EFA Model V (Mexico), 116-132
- Disaggregation, need for in developing countries, 25-26
- Disequilibrium system, 20
- Downing, Luis Durán, an econometric model for Nicaragua-Dusol, 83-114
- Dusol model of Nicaragua, 83-114
 "The Dynamics of Inflation in Chile," (Harberger), 228-229
- Eckaus, R.S., 15
- Econometric models, predictive accuracy evaluations, 115
- Eggs, 50, 51
- Elasticities of substitution, 2
- El Salvador, 98, 293, 301, 304
 exports to, 291
- Employment, and capital utilization, 334-338. *See also* Unemployment
- Entrepreneurs, in Latin America, 321-322
- Equities, 22
- Errors
 in exchange rate, 186-187
 of prediction in Diemex-Wharton model (Mexico), 119-129
- Exchange rate, 4, 19
 in Argentina, 221-222
 in Brazil, 193
 in Chile, 21-22
 in Colombia, 189
 errors, 186-187
 and exports, 21
 floating, 272-274, 281-282
 and inflation, 15
 Mexico/U.S., 180
 and price, 258
- Expectations. *See also* Forecast; Prediction
 for Argentina, 206-211, 218-222
 Cagan hypothesis of adaptive, 138
 forming, 138-140, 141, 178
 and predictions, 138
 rational, 142-143
 algebra of, 169-173
 hypothesis of, 138
- Export(s), 17
 of bananas, 304-305
 of beef, 306
 from Central America, 301-307
 to Central America, 289-308
 of coffee, 301-303
 to Costa Rica, 292
 of cotton, 303-304
 to El Salvador, 291
 equation in developing countries, 20-22
 function in SIECA model of Nicaragua, 87-88
 to Guatemala, 291
 to Honduras, 291-292
 to Nicaragua, 90, 292

- nontraditional, 21
- Panamanian, 43-47, 60, 277
- predictive errors for Mexico, 124
- promotion, 348
- of sugar, 305-306
- of timber, 306-307
- traditional, 21
- Fernandez, Roque B., 14
 - on output-inflation tradeoff in Argentina and Brazil, 133-176
- Financial markets
 - in developed countries, 22-24
 - and foreign sector, 23
- Financial system, in Nicaragua, 92-94, 99-100
- Fiscal policy
 - in developing country model, 27-28
 - and inflation, 239, 240
- Fiscal Reform of 1974 (Mexico), 125
- Fishing, Panamanian, 43-44
- Food
 - processing, in Panama, 52-53
 - relative prices of, 230, 231, 232, 238, 242, 243, 253-254n.25
- Forecast(ing). *See also* Expectations; Prediction
 - errors, in Nicaragua-Dusol model, 110-112
 - mechanical, 129
- Forecast time horizon, 125
- Foreign exchange, 281-282
- floating rates, 272-274
- Foreign investments, 18
- Foreign sector, 4
 - and financial markets, 23
 - and government expenditures, 19
 - importance of in developing countries, 14-16
 - and stabilization, 17, 20-21
 - and taxes, 25
- Foreign securities, 22
- Free Zone of Colon, 42, 43, 46
- Friedman, Milton, 77, 153, 154, 177, 201
- García, M. Jorge, 65
- Gilbard period in Argentina, 212-214, 218-220
- GNP projections model, 328-334, 340-346
- Goncalves, A.C., 150, 159
- Goodness of fit, 260
 - in Nicaragua-Dusol model, 107-109
- Goods
 - basic agricultural in Panama, 47
 - home, 262-263, 264-265
 - nontraded and money demand, 261
- Government
 - and exchange rates, 272-274, 281-282
 - and inflation, 239, 240
 - Government bonds, 22
 - Government expenditures
 - in developing countries, 18-19
 - and foreign sector, 19
 - in Panama, 42
 - Government revenues, in Panama, 42
- Gradualism, 158, 162
 - in Central America, 297-299
 - predictive errors for Mexico, 123-124
- Growth, 2
 - and capital utilization, 327-334
- Guatemala, 301, 304
 - exports, 291
- Hansen, Bent, 3, 4, 30, 135
- Hanson, James A., 14, 20, 193
 - on the monetary approach to the balance of payments, 257-288
 - on using econometric models in developing countries, 1-33
- Harberger, Arnold, 227, 228-229
- Harberger model, 229, 238-239, 240-241, 242
- Harrod-Domar models, 1
- Heller, Walter W., 20
- Higgins, Benjamin, 20
- Hines, A.G., 202
- Hoarding. *See* Saving
- Honduras, 98, 293, 301, 305, 307
 - exports, 291-292
- Housing, in Panama, 55, 56, 57, 58-60
- Human capital, formation of, 4
- Identities, used in Panamanian model, 69-70
- Import(s)
 - and capital utilization, 325
 - to Central America, 299-301
 - function, 16
 - liberalization, 348-349
 - to Panama, 60, 277
 - predictive errors for Mexico, 125
 - and prices, 15-16, 283-184n.11
 - quantitative restrictions on, 19-20
- INCAE model of Nicaragua, 84-86
- Income
 - from capital, 24
 - determination models, 28-30
 - disposable, 24

- nominal, in Argentina and Brazil, 150-153
- per capita, in Latin America, 58
- Income policy, in Argentina, 211-215, 218-222
- Industrial sector
 - and employment, 334-335, 338
 - Panamanian, 53-55
 - value added increase, 328
- Inflation
 - and aggregate demand, 227, 228-229, 233-234, 235-240
 - and agricultural sector, 230-231
 - in Argentina, 148-149, 153-162, 205-222
 - in Brazil, 148-149, 153-162
 - in Chile, 227-255
 - and exchange rate, 15
 - and government policy, 239, 240
 - in Latin America, 227-255
 - and monetary policy, 229
 - in Nicaragua, 90
 - and output, 133-176
 - and relative prices, 3
 - and unemployment, 157, 201
 - in United States, 25
- Information, lack of in developing countries, 3
- Interest rates
 - and consumption, 17, 58
 - and financial markets, 23-24
 - in Latin America, 319
 - in Panama, 43, 58, 68, 69
- International Financial Statistics, 144
- Investment
 - in developing countries, 17-18, 58
 - function, 16
 - in Panama, 58-60
- Israel economy of, 84
- Johnson, Harry G., 14, 43
- Keynsian economics, and Latin America, 312, 326, 330
- Keynsian model, and Phillips curve, 201
- Krieger-Vasena period in Argentina, 212-214, 218-220
- Labor, 3, 6
 - dualism of, 11-14
 - demand for in Panama, 66-67
 - supply and demand INCAE model of in Nicaragua, 85
- Labor-to-capital ratio, in traditional sector, 11
- Lag(s)
 - in developed and developing countries, 113n.4
 - one-year, 178
- Lagged variables, use of in SIECA model of Nicaragua, 86-87
- Land tenure, and Latin American inflation, 230
- Latifundia, 230
- Latin America. *See also* individual countries
 - agricultural sector, 227-228, 230
 - capital utilization in 311-352
 - inflation in, 227-255
 - interest rates in, 319
 - and Keynesian economics, 326, 330
 - money supply in, 249n.3
 - per capita income in, 58
 - price levels in, 14
 - shifts worked in, 313-318, 322-323, 336-338
 - tariffs in, 319-320
 - unemployment in, 312
 - wage rate in, 319
- Lewis, W. Arthur, 11
- Lipsey, Robert, 135, 201
- Lucas, Robert, 4, 6, 14, 133, 135, 177, 197
- MacBean, Alasdair J., 20, 21
- Machinery and equipment, Panama's investment in, 58-60
- McKinnon, Ronald I., 21
- Macroeconometric model, 134-143
- Mallon, Richard D., 222
- Marginal product, in traditional sector, 11
- Marginal propensity to consume (MPC), in SIECA model of Nicaragua, 87
- Markups, and price determination, 13
- Mathieson, Donald J. 21
- Mexico
 - econometric forecasting for, 115-132
 - errors predicting
 - exports, 124
 - gross domestic product, 123-124
 - imports, 125
 - prices, 125
 - Fiscal Reform of, 1974, 125
 - and government spending, 183
 - interest rates in, 124
 - money growth in, 178-185
 - output in, 179, 185-189
 - and U.S. economic activity, 185
 - and U.S. exchange rate, 180

362 Index

- Mikesell, Raymond F., 19
Minifundia, 230
Minimum Standard Model of Nicaragua, 88
Modern sector
 foreign investment in, 18
 market orientation of, 11
Monetarism
 approach to balance of payments, 257-282
 and Chilean inflation, 233-234, 240-249
 on Latin American inflation, 227-229, 233, 238-249
 in United States, 249n.3
Monetary policy, 23
 and developing country model, 27-28
 and inflation, 229, 239, 240
 in Panama, 41-42, 43, 67-69
 and price level, 257-258, 260-263
Monetary shocks, and output, 177-178
Money, 22
 demand for
 and price level, 229, 259-260
 and untraded goods, 261
 growth
 in Brazil, 193-197
 in Colombia, 178-179, 189-192
 in Mexico, 178-185
 influences on, 178-179
 as shock absorber, 264-265, 267-269
 supply, 14, 263-269
 determining, 140, 164-165n.3
 in Latin America, 249n.3
 and price level, 143
 vs. prices, 243-249
Modigliani, Franco, 17
Multiplier runs, for Panamanian model, 73-77
Musalem, Alberto, 22
Muth, John F., 134, 138

National accounts, in Nicaragua, 99, 101
National income
 determination models, 1-30
 determining, 3
Nerlove, Marc, 51
Nerlovian agricultural supply model, 51
Nicaragua, 304
 agriculture in, 85
 balance of payments in, 97-98, 101
 banking system, 93-94, 99-100
 credit flow in, 90
 Dusol econometric model of, 83-114
 forecasting errors in, 110-112
 goodness of fit in, 107-109
 stability in, 109-110
 exports, 90, 292
 financial system, 92-94, 99-100
 INCAE model of, 84-86
 capital formation in, 84-85
 labor supply and demand in, 85
 production function in, 84-85
 inflation rate in, 90
 Minimum Standard Model of, 88
 national accounts in, 99, 101
 price levels in, 90
 private sector, 98-99, 101
 public sector, 94-97, 100-101
 SIECA model, 86-88
 export function, 87-88
 lagged variables in, 86-87
 marginal propensity to consume in, 87

ODEPLAN, 26
O'Donnell, Guillermo, 215
Oligopolies, 320
 and prices, 232
Ordinary least squares estimation technique, 40
Output
 in Argentina, 148-149, 153-162
 in Brazil, 148-149, 153-162, 174, 194-197
 in Colombia, 179, 192-193
 and demand, 6
 and exchange rate errors, 186-187
 and inflation, 133-176
 in Mexico, 179, 185-189
 predicting, 3

Panama
 agricultural production in, 43-44, 47-52
 Behrman and Vargas's model of, 5
 consumption in, 57-58
 credit in, 43
 exports, 43-47, 60
 bananas, 43
 petroleum products, 44-46
 of services, 46-47
 of shrimp, 43-44
 fishery, 43-44
 food processing in, 52-53
 government expenditures in, 42
 government revenues in, 42

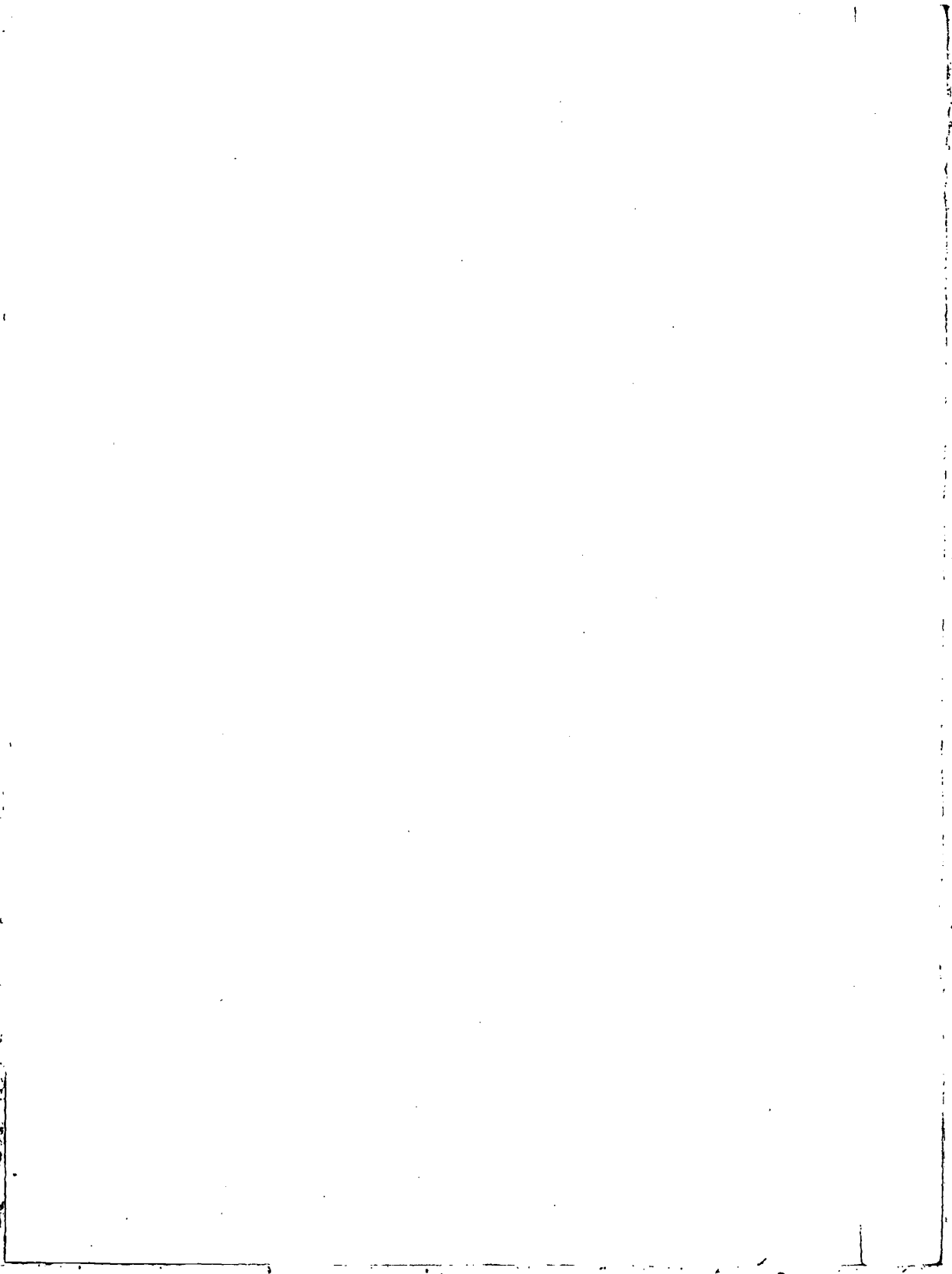
- imports, 60
 - petroleum products, 46
- industrial sector, 53-55
- interest rates in, 43, 58, 68, 69
- investment in, 58-60
- labor demand in, 66-67
- and monetary model of balance of payments, 276-278
- monetary policy in, 41-42, 43, 67-69
- prices in, 14, 60-62
 - government set, 42-43
- service sectors, 55-57
- supply functions, 47-53
- taxes in, 42
- total demand in, 57-60
- unemployment in, 64-65
- wages in, 63-67
 - determination of, 14
 - minimum, 43, 65
- Panamanian model, 25, 30, 39-81
 - credit variables in, 18
 - identities used in, 69-70
 - imports in, 20
 - and monetary policy changes, 27, 28
 - multiplier runs, 73-77
 - value added, 46
 - within-sample simulations, 70-72
- Papanek, Gustav, 19
- Peru
 - capital utilization in, 316, 321
 - shifts worked in, 313, 338
- Petroleum products, Panamanian, 44-46
- Phelps, Edmund S., 177, 201
- Phillips, A.W., 201
- Phillips curve, 14, 148, 201-202
 - and Argentine economy, 203-221
 - and expected inflation, 205-211
 - and income policy, 211-215, 218-222
 - simple version of, 203-205
 - and unions, 215-217, 219
- using, 162
- variables used, 202-203
- Policymaking, using econometric models for, 3
- Polynomial distributed lags, 40
- Portfolio equilibrium equation, 134, 136-137
- Prediction. *See also* Expectations; Forecast(ing)
 - errors of in Diemex-Wharton model (Mexico), 119-129
 - and expectations, 138
- Price index, determining, 13
- Price levels
 - in Chile, 13-14
 - and demand for money, 229, 259-260
 - and imports, 15-16
 - in Latin America, 14
 - and monetary policy, 257-258, 260-263
 - and money supply, 143
 - in Nicaragua, 90
 - in Panama, 14, 65
 - and wages, 6, 65
- Prices
 - in Argentina, 145-148, 153-162, 203, 206-222
 - in Brazil, 145-148
 - in Chile, 231-232
 - downward inflexibility of, 230
 - and exchange rates, 258
 - of imports, 283-284*n.11*
 - and markup, 13
 - vs. money supply, 243-249
 - in Panama, 60-62
 - government set, 42-43
 - of products, 50-51
 - predictive errors for Mexico, 125
 - relative, 3
 - and unions, 250*n.9*
 - and wages, 250*n.9*
 - world, and Central America, 307
- Private sector, in Nicaragua, 98-99, 101
- Production function, Nicaragua, in INCAE model, 84-85
- Product markets, dualism, 11-14
- Product prices, Panamanian, 50-51
- Public sector, in Nicaragua, 94-97, 100-101
- Resnick, Stephen, 18
- Reynolds, Clark, 18
- Rosenstein-Rodan, Paul N., 4, 18
- Rural sector, employment in, 13
- Rural-urban migration, 12, 31*n.16*
- Sargent, Thomas, 133, 134, 136
- Saving(s)
 - effect of, 264-265, 267-269, 270
 - private, 24
- Schydrowsky, Daniel M., 2
 - on capital utilization in Latin America, 311-355
- Securities, 269, 270
 - foreign. *See* Foreign securities
- Services, Panamanian, 46-47
- Service sector
 - and employment, 336, 338
 - Panamanian, 55-57
 - value added increase, 328
- Sheahan, John, 22

- Shifts, worked in Latin America, 313-318, 322-323, 336-338
- Shocks, and balance of payments, 258
- Shrimps, 43-44
- SIECA model of Nicaragua, 86-88
- Sims test, 240, 243-244, 247
- Single shifting, 318
in Latin America, 312
- Siri, Gabriel, minimodel of external dependence of Central American economies, 289-309
- Small country model, of monetary approach to balance of payments, 258-282
- Social overhead capital, 4, 18
- Solis, José Félix, and econometric model for Nicaragua-Dusol, 83-114
- Solow, Robert, 4, 210
- Solow-Tobin analysis, 149
- Sourille, Juan V., 222
- Stabilization, 2
and export values, 20-21
and foreign sector, 20-21
- Stability, of Nicaragua-Dusol model, 109-110
- Stagflation, 156
- Stavrou, J., 40
- Structuralism
on Chilean inflation, 231-249
and export values, 20
on Latin American inflation, 227-228, 229-249
- "Structuralist-monetarist" controversy, 2
- Structural reform, 231
- Substitution
elasticities, 2
in modern sector, 11
- Sugar, exports, 50, 51, 305-306
- Suppliers
vs. aggregate demand, 135
and price changes, 137
- Supply, 2
aggregate. *See* Aggregate supply and capital utilization, 338, 340
functions, Panamanian, 47-53
inelastic, in Latin American agricultural sector, 227-228
- Tarantelli, F., 17
- Tariffs, 19
in Central America, 292
in Latin America, 319-320
- Tax(es)
and capital utilization, 349
in developing countries, 24-25
on foreign sector, 25
function equation, 24-25
in Panama, 42
- Taylor, Lance, 77
- Timber, exports, 306-307
- Tobacco, 49, 51, 52
- Tobin, James, 22
- Tourism, in Panama, 46
- Trade policy, 320, 322, 325-326
and capital utilization, 348-349
- Traditional sector
market orientation of, 11
wages in, 11-14
- Transfer functions, deriving for prices, 175-176
- Transportation, in Panama, 55, 56, 57
- Unemployment, 6. *See also* Employment
in Argentina, 203, 204-222
and inflation, 157, 201
in Latin America, 312
in Panama, 64-65
in traditional sector, 11
urban, 11-12, 31n.16
- Unions, 11
in Argentina, 211-215, 219
and prices, 250n.9
and wages, 202
- United States
government spending in, 183
inflation in, 25
and Mexico
economic activity, 185
exchange rate, 180
monetarism in, 249n.3
money influences in, 178-179
one-year lag in, 178
- U.S. dollar, in Balboa, 67-68
- Value added, in Panama, 46, 53, 55
- Vargas, Juan Rafeal, Panamanian model, 39-81
- Venezuela, shifts worked, 313
- Villanueva, Javier, 215
- Wachter, Susan M., 3
on structuralism and monetarism, 227-255
- Wage(s)
in Argentina, 203-222
and capital utilization, 350-351
determination of
in Chile, 14
in Latin America, 14
in Panama, 14

and foreign sector, 15
minimum, in Panama, 43, 65
in modern sector, 11-14
in Panama, 43, 63-67
and prices, 250n.9
rate, in Latin America, 319
in traditional sector, 11-14
and unemployment, 6
and unions, 202

Wallace, Neil, 133, 134, 136
Walras' law, 235
Wholesale price index, in Panama, 62
Within sample simulations of Pan-
amanian model, 70-72
World Bank model of Nicaragua, 88

Zinzer, James E., 19



About the Editors

Jere R. Behrman is a Professor and Chairperson of Economics at the University of Pennsylvania. His primary research interest is in applied economic analysis of the domestic and international aspects of economic development. His secondary research interests include international trade, more generally and economic distribution in the United States. He has considerable international experience, particularly in Latin America. He has served as a consultant or research associate for the World Bank, Wharton Econometric Forecasting Associates, the National Bureau of Economic Research, SIECA, ILPES, UNDP, UNCTAD, INCAE, AID, ECIEL, NSF, ODC, HIID, the Ford Foundation, The Rockefeller Foundation, and Central Banks, Planning Agencies, and ministries for various governments. He is author or co-author of *Macroeconomic Policy in a Developing Country*; *The International Economic Order*, *Economic Development*, and *International Commodity Agreements*; *Econometric Modeling of World Commodity Policy*; *International Commodity Agreements: An Evaluation of the UNCTAD Integrated Programme*; *Socioeconomic Success: A Study of the Effects of Genetic Endowments, Family Environment and Schooling*; *Econometric Models of World Agricultural Commodity Markets*; *Foreign Trade Regimes and Economic Development*; and *Supply Response in Underdeveloped Agriculture*. He also has published in the *American Economic Review*, *Econometrica*, *The Journal of Political Economy*, *The International Economic Review*, *Cuadernos de Economía*, and other professional journals and collections of papers.

James A. Hanson is an associate professor of economics and chairman of the Latin American studies committee at Brown University. His experience in Latin America includes work in Venezuela under

the auspices of the Yale Growth Center, in Colombia and Panamá with the national planning agencies and as consultant to the BID, and the U.N. Economic Commission for Latin America, where he served as director of research for the Instituto Latino Americano de Planificación Económica y Social. He also has been a Fulbright lecturer in Ecuador and Uruguay. At present, he is editor of the *American Economic Association, Papers and Proceedings*. In addition to *Growth in Open Economies*, he has published articles in the *American Economic Review*, *Economic Inquiry*, *Economic Development and Cultural Change*, *Journal of Economic Studies*, *Cuadernos de Economía* and *Desarrollo Económico*.

About the Contributors

Robert Barro is professor of economics at the University of Rochester and was consultant to the Departamento Nacional de Planeación de Colombia. He has written extensively on money, hyperinflation, nonmarket clearing macroeconomic models, and most recently monetary effects in rational expectations models.

Abel Beltrán del Rio is director of the Wharton—DIEMEX project and has written extensively on econometric models of Latin American economies, especially Mexico.

George Borts is professor of economics at Brown University, editor of the *American Economic Review* and has written extensively on international finance, investment and trade.

Mario Brodersohn is a member of the Instituto Torcuato Di Tella in Buenos Aires, has served as a consultant for the ILO and PREALC, and written extensively on problems of employment and macroeconomic policy in Argentina and other Latin American economies.

Luis Duran Downing is a member of the Departamento de Estudios Económicos del Banco Central de Nicaragua.

Roque Fernandez was a staff member of ILPES and the IMF and has written extensively on econometric analysis and on inflation in Latin America. He is presently a member of the Centro de Estudios Macroeconomicos de Argentina in Buenos Aires.

Daniel Schydlosky is professor of economics and associate director of the Center for Latin American Development Studies at Boston

370 *About the Contributors*

University. He has written extensively on macroeconomic problems of Latin American countries and effective protection.

Gabriel Siri is director of the Study Unit for Integration and Development of the Permanent Secretariat of the General Treaty for Central American Integration (SIECA).

José Félix Solís is a member of the Departamento de Estudios Economicos del Banco Central de Nicaragua.

Juan Rafael Vargas is a staff member of the Study Unit for Integration and Development of the Permanent Secretariat of the General Treaty for Central American Integration (SIECA).

Susan Wachter is an associate professor of finance in the Wharton School of the University of Pennsylvania and has written extensively on structural inflation in Latin America.