

This PDF is a selection from an out-of-print volume from the National Bureau of Economic Research

Volume Title: Essays on Interest Rates, Vol. 2

Volume Author/Editor: Jack M. Guttentag, ed.

Volume Publisher: NBER

Volume ISBN: 0-87014-224-0

Volume URL: <http://www.nber.org/books/gutt71-2>

Publication Date: 1971

Chapter Title: Front Matter to "Essays on Interest Rates, Vol. 2"

Chapter Author: Jack M. Guttentag

Chapter URL: <http://www.nber.org/chapters/c3996>

Chapter pages in book: (p. -33 - -10)

Essays on Interest Rates

VOLUME II

Edited by

JACK M. GUTTENTAG



New York

1971

NATIONAL BUREAU OF ECONOMIC RESEARCH

Distributed by Columbia University Press New York & London

Copyright © 1971 by National Bureau of Economic Research

All Rights Reserved

L.C. Card No. 77-79936

Printed in the United States of America

ISBN: 0-87014-224-0



Essays on Interest Rates

NATIONAL BUREAU OF ECONOMIC RESEARCH

Number 93, General Series

2,005,950

Vol 2
V2.

National Bureau of Economic Research, Inc.

Essays on interest rates. Edited by Jack M. Guttentag & Phillip Cagan. New York, National Bureau of Economic Research; distributed by Columbia University Press, 1969-71.

2 v. illus. 24 cm. (National Bureau of Economic Research. General series, no. 88, 93) \$10.00 (v. 1); \$15.00 (v. 2)

Vol. 2 edited by J. M. Guttentag.

Includes bibliographical references.

1. Interest and usury—U. S.—Addresses, essays, lectures. I. Guttentag, Jack M., 1923— ed. II. Cagan, Phillip, ed. III. Series: National Bureau of Economic Research. General series, no. 88, (etc.).

HG1623.U5E8

332.8'20973

77-79936

MATERIAL SUBMITTED BY PUBLISHER.

National Bureau of Economic Research

OFFICERS

Arthur F. Burns, *Honorary Chairman*
Theodore O. Yntema, *Chairman*
Walter W. Heller, *Vice Chairman*
John R. Meyer, *President*
Thomas D. Flynn, *Treasurer*
Douglas H. Eldridge, *Vice President-Executive Secretary*

Victor R. Fuchs, *Vice President-Research*
F. Thomas Juster, *Vice President-Research*
Hal B. Lary, *Vice President-Research*
Robert E. Lipsey, *Vice President-Research*
Edward K. Smith, *Vice President*
Joan R. Tron, *Director of Publications*

DIRECTORS AT LARGE

Atherton Bean, *International Multifoods Corporation*
Joseph A. Beirne, *Communications Workers of America*
Arthur F. Burns, *Board of Governors of the Federal Reserve System*
Wallace J. Campbell, *Foundation for Cooperative Housing*
Erwin D. Canham, *Christian Science Monitor*
Robert A. Charpie, *The Cabot Corporation*
Solomon Fabricant, *New York University*
Frank W. Fetter, *Hanover, New Hampshire*
Eugene P. Foley, *Dreyfus Corporation*
Eli Goldston, *Eastern Gas and Fuel Associates*
Crawford H. Greenewalt, *E. I. du Pont de Nemours & Company*
David L. Grove, *International Business Machines Corporation*

Walter W. Heller, *University of Minnesota*
Vivian W. Henderson, *Clark College*
John R. Meyer, *Yale University*
J. Irwin Miller, *Cummins Engine Company, Inc.*
Geoffrey H. Moore, *Bureau of Labor Statistics*
J. Wilson Newman, *Dun & Bradstreet, Inc.*
James J. O'Leary, *United States Trust Company of New York*
Robert V. Roosa, *Brown Brothers Harriman & Co.*
Boris Shishkin, *American Federation of Labor and Congress of Industrial Organizations*
Lazare Teper, *International Ladies' Garment Workers' Union*
Donald B. Woodward, *Riverside, Connecticut*
Theodore O. Yntema, *Oakland University*

DIRECTORS BY UNIVERSITY APPOINTMENT

Moses Abramovitz, *Stanford*
Charles H. Berry, *Princeton*
Francis M. Boddy, *Minnesota*
Tom E. Davis, *Cornell*
Otto Eckstein, *Harvard*
Walter D. Fisher, *Northwestern*
R. A. Gordon, *California*
Robert J. Lampman, *Wisconsin*

Kelvin J. Lancaster, *Columbia*
Maurice W. Lee, *North Carolina*
Lloyd G. Reynolds, *Yale*
Robert M. Solow, *Massachusetts Institute of Technology*
Henri Theil, *Chicago*
Thomas A. Wilson, *Toronto*
Willis J. Winn, *Pennsylvania*

DIRECTORS BY APPOINTMENT OF OTHER ORGANIZATIONS

Emilio G. Collado, *Committee for Economic Development*
Thomas D. Flynn, *American Institute of Certified Public Accountants*
Nathaniel Goldfinger, *American Federation of Labor and Congress of Industrial Organizations*
Harold G. Halcrow, *American Agricultural Economics Association*
Douglas G. Hartle, *Canadian Economics Association*

Walter E. Hoadley, *American Finance Association*
Douglass C. North, *Economic History Association*
Charles B. Reeder, *National Association of Business Economists*
Murray Shields, *American Management Association*
Willard L. Thorp, *American Economic Association*
W. Allen Wallis, *American Statistical Association*

DIRECTORS EMERITI

Percival F. Brundage
Gottfried Haberler

Albert J. Hettinger, Jr.

George B. Roberts
Joseph H. Willits

SENIOR RESEARCH STAFF

Gary S. Becker
Charlotte Boschan
Phillip Cagan
James S. Earley
Solomon Fabricant
Milton Friedman
Victor R. Fuchs

Raymond W. Goldsmith
Jack M. Guttentag
Daniel M. Holland
F. Thomas Juster
C. Harry Kahn
John F. Kain
John W. Kendrick

Irving B. Kravis
Hal B. Lary
Robert E. Lipsey
John R. Meyer
Jacob Mincer
Ilse Mintz
Geoffrey H. Moore*

M. Ishaq Nadiri
Nancy Ruggles
Richard Ruggles
Anna J. Schwartz
Robert P. Shay
George J. Stigler
Victor Zarnowitz

* On leave.

Relation of the Directors to the Work and Publications of the National Bureau of Economic Research

1. The object of the National Bureau of Economic Research is to ascertain and to present to the public important economic facts and their interpretation in a scientific and impartial manner. The Board of Directors is charged with the responsibility of ensuring that the work of the National Bureau is carried on in strict conformity with this object.

2. The President of the National Bureau shall submit to the Board of Directors, or to its Executive Committee, for their formal adoption all specific proposals for research to be instituted.

3. No research report shall be published until the President shall have submitted to each member of the Board the manuscript proposed for publication, and such information as will, in his opinion and in the opinion of the author, serve to determine the suitability of the report for publication in accordance with the principles of the National Bureau. Each manuscript shall contain a summary drawing attention to the nature and treatment of the problem studied, the character of the data and their utilization in the report, and the main conclusions reached.

4. For each manuscript so submitted, a special committee of the Board shall be appointed by majority agreement of the President and Vice Presidents (or by the Executive Committee in case of inability to decide on the part of the President and Vice Presidents), consisting of three directors selected as nearly as may be one from each general division of the Board. The names of the special manuscript committee shall be stated to each Director when the manuscript is submitted to him. It shall be the duty of each member of the special manuscript committee to read the manuscript: If each member of the manuscript committee signifies his approval within thirty days of the transmittal of the manuscript, the report may be published. If at the end of that period any member of the manuscript committee withholds his approval, the President shall then notify each member of the Board, requesting approval or disapproval of publication, and thirty days additional shall be granted for this purpose. The manuscript shall then not be published unless at least a majority of the entire Board who shall have voted on the proposal within the time fixed for the receipt of votes shall have approved.

5. No manuscript may be published, though approved by each member of the special manuscript committee, until forty-five days have elapsed from the transmittal of the report in manuscript form. The interval is allowed for the receipt of any memorandum of dissent or reservation, together with a brief statement of his reasons, that any member may wish to express; and such memorandum of dissent or reservation shall be published with the manuscript if he so desires. Publication does not, however, imply that each member of the Board has read the manuscript, or that either members of the Board in general or the special committee have passed on its validity in every detail.

6. Publications of the National Bureau issued for informational purposes concerning the work of the Bureau and its staff, or issued to inform the public of activities of Bureau staff, and volumes issued as a result of various conferences involving the National Bureau shall contain a specific disclaimer noting that such publication has not passed through the normal review procedures required in this resolution. The Executive Committee of the Board is charged with review of all such publications from time to time to ensure that they do not take on the character of formal research reports of the National Bureau, requiring formal Board approval.

7. Unless otherwise determined by the Board or exempted by the terms of paragraph 6, a copy of this resolution shall be printed in each National Bureau publication.

(Resolution adopted October 25, 1926, and revised February 6, 1933, February 24, 1941, and April 20, 1968)

Advisory Committee on the Interest Rate Study

In the planning and review of its studies of interest rates, the National Bureau has benefited from the advice and guidance of this committee. The committee's concurrence with the views expressed in this report, however, is not to be assumed. The members of the committee are:

W. Braddock Hickman* (chairman), Federal Reserve Bank of Cleveland
Julian D. Anthony, Hartford Life Insurance Company
Daniel H. Brill, Commercial Credit Company
Lester V. Chandler, Atlanta University
W. A. Clarke,** W. A. Clarke Mortgage Company
George T. Conklin, Jr., The Guardian Life Insurance Company of America
Milton Friedman, The University of Chicago
Raymond W. Goldsmith, Yale University
Sidney Homer, Salomon Brothers & Hutzler
Norris O. Johnson, University of Maine
Robert G. Link, Federal Reserve Bank of New York
Roger F. Murray, Teachers Insurance and Annuity Association
James J. O'Leary, United States Trust Company of New York
Roy L. Reiersen, Bankers Trust Company
Eli Shapiro, Harvard University
Henry C. Wallich, Yale University
Kenneth M. Wright, Life Insurance Association of America
C. Richard Youngdahl, Aubrey G. Lanston & Co., Inc.

* W. Braddock Hickman was chairman of the Committee until his death on November 29, 1970.

** W. A. Clarke was a member of the Committee until his death on February 8, 1965.



Contents

Acknowledgments	xxi
Introduction and Summary	xxiii
PHILLIP CAGAN Changes in the Cyclical Behavior of Interest Rates	3
STANLEY DILLER The Seasonal Variation of Interest Rates	35
MARK W. FRANKENA The Influence of Call Provisions and Coupon Rate on the Yields of Corporate Bonds	134
E. BRUCE FREDRIKSON The Geographic Structure of Residential Mortgage Yields	187
AVERY B. COHAN The Ex Ante Quality of Direct Placements, 1951-61	231
REUBEN A. KESSEL The Cyclical Behavior of the Term Structure of Interest Rates	337
THOMAS SARGENT Expectations at the Short End of the Yield Curve: An Application of Macaulay's Test	391
STANLEY DILLER The Expectations Component of the Term Structure	413
Index	435



Tables

1-1. Median Lead or Lag of Interest Rates at Reference Cycle Turns, Selected Periods	11
1-2. Arithmetic Average of Median Lags in Short and Long Rates at Selected Reference Peaks and Troughs Before and After World War I	13
1-3. Degree of Clustering of Cyclical Turns in Short and Long Rates, as Indicated by Variation in Lags at Selected Reference Peaks and Troughs	14
1-4. Median Lead or Lag of Bond Yields at Reference Cycle Turns for Periods of Falling and Rising Trend	15
1-5. Average Amplitude of Cyclical Phases for Selected Periods	18
1-6. Comparison Between Specific Cycle Phase Amplitudes for Which Severity of Corresponding Reference Cycle Phases Is Similar, Ratio of 1950's to 1920's	20
1-A. Timing and Amplitude of Specific Cycles in Interest Rates, 1878-1961	22
1-B. Amplitude of Movements in Interest Rates Over Reference Cycles, Change Between Peak and Trough Stages	28
2-1. Measures of the Relative Importance of the Seasonal Components of the Four Series of Short-Term Securities, 1948-65	61
2-2. Simple Correlation Coefficients Between the Seasonal Factors for Treasury Bill Rates and Those for Other Short-Term Rates for Selected Years	67
2-3. Suggested Periods for Adjusting Short-Term Series	72
2-4. Measures of the Relative Importance of the Seasonal Components in the Variation of Yields on Long-Term Bonds, 1948-65	74
2-5. Variance of Seasonal Factors for Selected Years for All Securities Considered	78
2-6. Coefficients Among the Seasonal Factors in 1957 for All the Long-Term Securities Considered	79

2- 7. Coefficients Among the Seasonal Factors in 1953 for All the Long-Term Securities Considered	81
2- 8. Coefficients Among the Seasonal Factors in 1965 for All the Long-Term Securities Considered	82
2- 9. Average Seasonal Factors for Yields on Long-Term Securities for Selected Years	83
2-10. Suggested Periods for Accepting Seasonally Adjusted Interest Rate Series	94
2-11. Summary Statistics for Kuznets' Amplitude-Ratio Method Regressions, 1948-56	98
2-12. Seasonal Factors of Treasury Bill Rates for July and December Computed for the Original and the Seasonally Adjusted Series, and the Kuznets' Method	99
2-13. Seasonal Factors of Treasury Bill Rates for Selected Years Computed for the Original and the Seasonally Adjusted Series, and the Kuznets' Method	102
2-14. Costs and Returns of Arbitrage for Twenty-Year Securities Between Seasonal Peaks and Troughs Under Certain Hypothetical Conditions	108
2-15. Differential in the Trend-Cycle Values Between Nine- to Twelve-Month and 91-Day Treasury Securities for June Through November, 1948-65	114
2-16. Regression of Seasonal Factors of Treasury Bill Rates on Those of Money Supply, 1948-65	122
2-17. Regression of Seasonal Factors of Treasury Bill Rates on Those of Money Supply and Total Bills Outstanding, 1948-65	122
2-18. Multiple Regression Statistics for the Pooled Data of the Seasonal Factors of Treasury Bill Rates on Those of the Money Supply and the Total Number of Bills Outstanding, All Months, 1948-65	124
2-19. Multiple Regression Statistics for the Variance of the Seasonal Factors of Treasury Bill Rates on Those of Money Supply and Total Bills Outstanding, 1948-65	125
2-20. Multiple Regression Statistics for the Pooled Data of the Seasonal Factors for Money Supply on Those of Treasury Bill Rates and Total Bills Outstanding, All Months, 1948-65	126
3-1. Publicly Offered Utility Bonds Issued in 1953 and Called in 1954-55, by Quality Rating and Coupon Rate	143
3-2. Regression of Yield Spread on Explanatory Variables, 3 $\frac{3}{4}$ to 5 $\frac{3}{4}$ Per Cent Coupon Bonds, 1957-66	158
3-3. Regression of Yield Spread on Explanatory Variables, for Bonds With Given Coupon Rates	160
3-4. Classification of New A, Aa, and Aaa Utility Issues With Deferrals, 1957-65	167

3-5. Average Yield Spreads for New A, Aa, and Aaa Utility Bonds, Callable Issues Compared to Issues With Refunding Deferments, 1957-66	168
3-6. Average Yield Spreads on Seasoned Aa-Aaa Utility Bonds, Callable Issues Compared to Issues With Deferments of Two Years or More, by Coupon Rate, 1957-66	171
3-A. Average First-of-Month Yields on Seasoned Long-Term Callable Aa-Aaa Public Utility Bonds, by Coupon Rate, 1957-66	173
3-B. Spreads Between Average First-of-Month Yields on Seasoned Long-Term Callable Aa-Aaa Public Utility Bonds and Similar Bonds With Refunding Deferments of Two Years or More, by Coupon Rate, 1957-66	180
3-C. First-of-Month Yield on New Issues, Callable Aa Public Utility Bonds, 1956-66	186
4-1. Average Interest Rate on Residential Mortgages Outstanding by Region, for Selected Years, 1890-1960	194
4-2. Interregional Yield Differential Measured by Effective Interest Rate Minus Yield Differential Measured by Contract Rate	198
4-3. Change in Yield Differential Between Paired Cities From Inclusion of Risk Variables	204
4-4. Distribution of Mean Effective Interest Rates on All Loans in 100 Metropolitan Areas, by Geographic Areas, May-December 1963	206
4-A1. States Included in Regions	214
4-A2. Mean Effective Interest Rate for States, Grouped by Region, Loan Purpose, and Lender Type	215
4-A3. Average Terms on Conventional Residential Mortgage Loan by Loan Purpose and Type of Lender for 18 Principal Metropolitan Areas Combined, May-December, 1963	220
4-A4. Standard Deviation of Average Contract Terms in 18 Metropolitan Areas	221
4-A5. Coefficient of Multiple Determination and Standard Error of the Estimate for Successive Regression Steps, by Loan Purpose and Region and Lender Type; Dependent Variable Is Effective Interest Rate	222
4-A6. Coefficient of Multiple Determination and Standard Error of the Estimate for Successive Regression Steps, by Loan Purpose and Region and Lender Type; Dependent Variable Is Contract Interest Rate	224
4-A7. Mean Effective Interest Rate on Conventional Residential Mortgage Loans by Loan Purpose and Region and Lender Type, May-December, 1963	226
4-A8. Mean Contract Interest Rate on Conventional Residential	

Mortgage Loans by Loan Purpose and Region and Lender Type, May-December, 1963	227
4-A9. Frequency Distribution of Mean Effective Interest Rates on Conventional Residential Mortgage Loans in 100 Metropolitan Areas, by Loan Purpose, May-December, 1963	228
4-A10. Frequency Distribution of Mean Effective Interest Rates on Conventional Residential Mortgage Loans in 100 Metropolitan Areas, by Type of Lender, May-December, 1963	229
4-A11. Yield Differential Before Inclusion of Risk Variable Less Yield Differential After Inclusion of Risk Variable	230
4-A12. Coefficients for Dummy Variables Representing SMSAs, for All Loans, by Type of Lender and Loan Purpose; Dependent Variable Is Effective Interest Rate	231
4-A13. T Values for Coefficients in Appendix Table 4-A12	233
4-A14. Effective Interest Rate Differential Based Upon Multiple Regression Analysis, Between Loans on Boston Properties and Loans in 17 Other SMSAs	234
4-A15. Coefficients for Dummy Variables Representing SMSAs, for All Loans, by Type of Lender and Loan Purpose; Dependent Variable Is Contract Interest Rate	235
4-A16. T Values for Coefficients in Appendix Table 4-A15	237
4-A17. Contract Interest Rate Differential Based Upon Multiple Regression Analysis, Between Loans on Boston Properties and Loans in 17 Other SMSAs	238
4-S1. Mean Effective Interest Rate, Selected Cities, by Loan Purpose and Lender Type Category	239
4-S2. Mean Contract Interest Rate, Selected Cities, by Loan Purpose and Lender Type Category	242
4-S3. Average Fees and Charges, Selected Cities, by Loan Purpose and Lender Type Category	245
4-S4. Average Loan/Value Ratio, Selected Cities, by Loan Purpose and Lender Type Category	248
4-S5. Mean Purchase Price, Selected Cities, by Loan Purpose and Lender Type Category	251
4-S6. Mean Loan Amount, Selected Cities, by Loan Purpose and Lender Type Category	254
4-S7. Average Maturity, Selected Cities, by Loan Purpose and Lender Type Category	257
4-T1. Mean Effective Interest Rate, Selected Cities, by Type of Lender and Loan Purpose	260
4-T2. Mean Contract Interest Rate, Selected Cities, by Type of Lender and Loan Purpose	263
4-T3. Mean Fees and Charges, Selected Cities, by Type of Lender and Loan Purpose	266
4-T4. Average Loan/Value Ratio, Selected Cities, by Type of Lender and Loan Purpose	269

4-T5. Mean Purchase Price, Selected Cities, by Type of Lender and Loan Purpose	272
4-T6. Mean Loan Amount, Selected Cities, by Type of Lender and Loan Purpose	275
4-T7. Average Maturity, Selected Cities, by Type of Lender and Loan Purpose	278
5- 1. Illustration of Calculation on Hypothetical Issue, of Probability of Repayment in Full and on Time	283
5- 2. Industrial Direct Placements, Weighted Average Simple Probabilities, Quarterly, 1951-61	296
5- 3. Public Utility Direct Placements, Weighted Average Simple Probabilities, Quarterly, 1951-61	296
5- 4. Finance Company Direct Placements, Weighted Average Simple Probabilities, Quarterly, 1951-61	297
5- 5. Weighted Probabilities to Maturity, All Series, 1951-61	299
5- 6. Direct Placements, Return on Long-Term Governments Divided by Computed Return on Direct Placement of Fixed Characteristics, Quarterly, 1951-61	303
5- 7. Return on Long-Term Governments Divided by Return on Moody's Aaa's and Baa's, Quarterly, 1951-61	308
5- 8. Deliveries, Total Commitments, and New Commitments of Direct Placements to Corporate Borrowers, Quarterly, 1951-61	312
5- 9. Industrial Direct Placements, Regression of Compound Probabilities on Total Outstanding Commitments and Various Quality Variables, Significant Coefficients and Standard Errors	316
5-10. Public Utility Direct Placements, Regression of Compound Probabilities on Total Outstanding Commitments and Various Quality Variables, Significant Coefficients and Standard Errors	316
5-11. Direct Placements, Weighted Average Compound Probabilities, Quarterly	318
5-12. Direct Placements, Calculation of Adjustment for Differential Call Deferment Between Direct Placements and Long-Term Governments	320
5-13. Direct Placements, Weighted Average Simple Probabilities Adjusted for Differential Call Deferment and Weighted Average Compound Probabilities Adjusted for Differential Call Deferment and for the Volume of Financing, Quarterly, 1951-61	324
5-14. Estimated Simple Probabilities for Industrials and Utilities by Agency Rating, 1900-43	328
5-15. Hickman-Fraire Sample of Corporate Bonds, Estimated Ex Ante and Realized Probabilities, 1900-43	332
5-16. Hickman-Fraire Sample of Corporate Bonds, Derivation of Mean Market Rating for Utilities, 1900-43	333

5-17. Hickman-Fraire Sample of Corporate Bonds, Derivation of Mean Market Rating for Industrials, 1900-43	333
5-18. Hickman-Fraire Sample of Corporate Bonds, Comparison of Estimated Simple and Compound Ex Ante Probabilities With "Realized" Simple and Compound Probabilities, 1900-43	334
6-1. Meiselman's Error Term and Forecast Revisions	352
6-2. Distribution of Errors in Predicting Treasury Bill Rates	356
6-3. Correlation of Forecast Revisions With Errors as Defined by Meiselman, 1958-61	368
6-4. Coefficients Between Weekly Seasonal Factors in Treasury Bill Rates, 1959-61	371
7-1. Estimated Phase of Cross-Spectrum Between j -Week and One-Week Bills	404
7-2. Regression of Phase Statistics on Angular Frequency, All Frequencies	406
7-3. Regression of Phase Statistics on Angular Frequency, Selected Frequencies	408
8-1. Direct and Indirect Estimates of the Error-Learning Coefficients and the Forecasting Weights, and Estimates of the Significance of the Differences Between the Direct and Indirect Estimates, Annual Data, 1901-54	421
8-2. Statistics Computed From the Regression of the Expected Change of Future Spot Rates on the Level of the Current One-Period Spot Rate, Durand Data, Annual Observations, 1900-54	423
8-3. Partitioned Relationship Between the Index of Industrial Production and the Forward Rates, Treasury Data, Quarterly Observations, 1949-64	427
8-4. Partitioned Relationship Between the Dow Jones Index of Industrial Stock Prices and the Forward Rates, Treasury Data, Quarterly Observations, 1949-64	428
8-5. Ratios of Mean Square Errors and of Their Random Component of Forecasts Relative to Benchmark Forecasts, Treasury Data, Quarterly Observations, 1949-64	430
8-6. Selected Statistics From the Regression of Target Spot Rates on the Extrapolative and Autonomous Components of the Forecasts, Treasury Data, Quarterly Observations, 1949-64	431

Charts

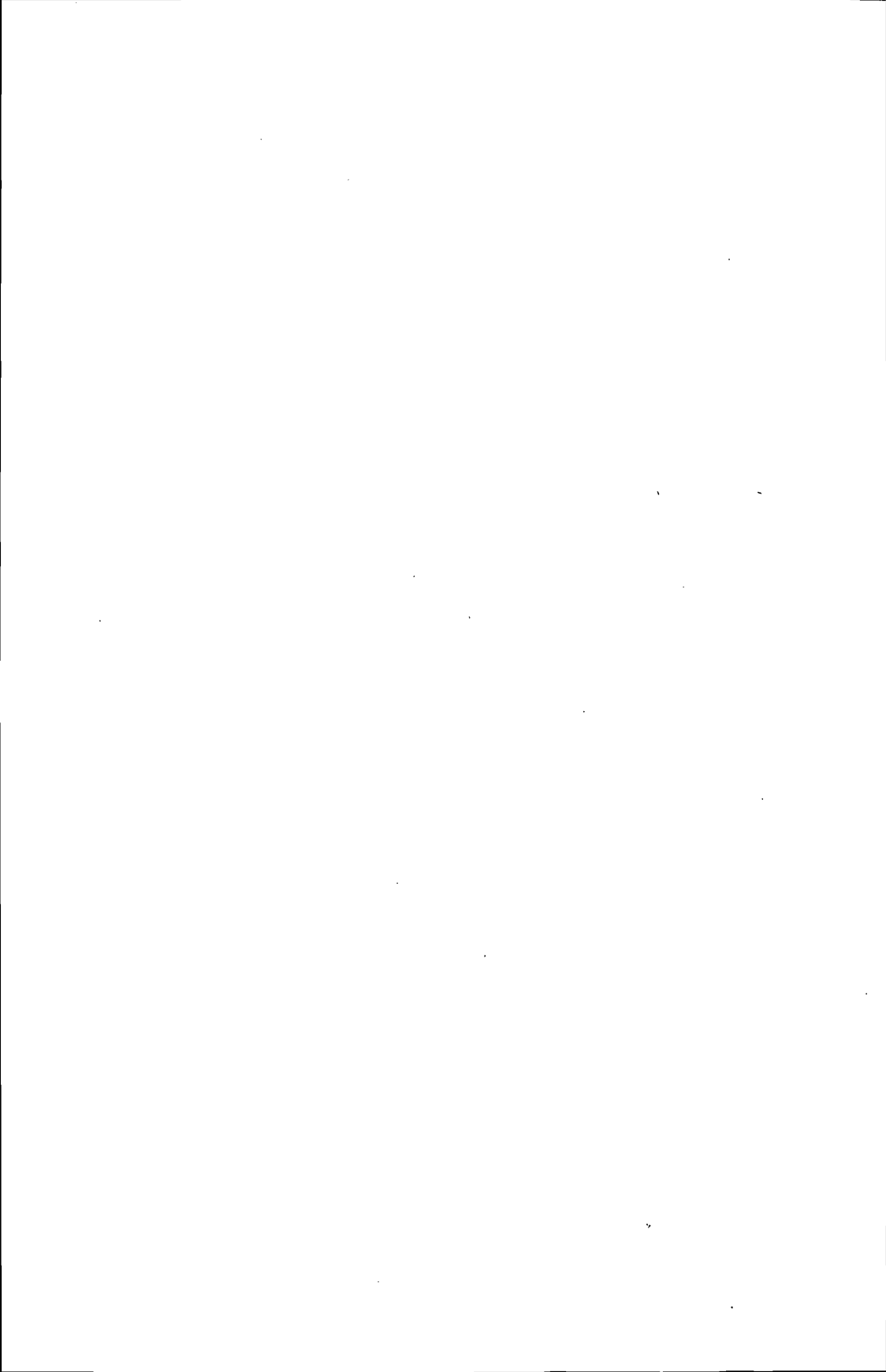
1-1. Chronology of Specific Cycles in Interest Rates Compared With Reference Cycles	6
1-2. Cyclical Patterns of Interest Rates, Nine Reference Cycle Stages	9
2-1. Seasonal Factors on Short-Term Securities for Selected Years	38
2-2. Seasonal Factors for Yield on Call Money, Macaulay's Series, 1915	39
2-3. Seasonal Factors for Bankers' Acceptance Rates and Yields on Municipal Bonds, Highest Rating, 1958	43
2-4. Variance of Seasonal Factors of Yields on U.S. Government Securities, 1948-65	44
2-5. Seasonal Factors for Yields on Selected Long-Term Securities, 1954	46
2-6. Seasonal Factors for Yields on Corporate and Industrial Bonds, Highest Rating, 1952 and 1957	47
2-7. SI Ratios and Seasonal Factors for Treasury Bill Rates, 1948-65	64
2-8. Variation of Monthly Factor Curves and SI Ratios of Treasury Bill Rates, 1948-65	65
2-9. SI Ratios and Seasonal Factors for Bankers' Acceptance Rates, 1948-65	68
2-10. SI Ratios and Seasonal Factors for Commercial Paper Rates, 1948-65	69
2-11. SI Ratios and Seasonal Factors for Yields on Nine- to Twelve-Month U.S. Government Securities, 1948-65	71
2-12. Seasonal Factors for Short-Term Interest Series, 1948-65	73
2-13. SI Ratios and Seasonal Factors for Yields on Long-Term U.S. Bonds, 1948-65	84
2-14. SI Ratios and Seasonal Factors for Yields on U.S. Government Three- to Five-Year Securities, 1948-65	86
2-15. SI Ratios and Seasonal Factors for Yields on Municipal Bonds, Highest Rating, 1948-65	88

2-16. SI Ratios and Seasonal Factors for Yields on Corporate Bonds, Lowest Rating, 1948-65	90
2-17. SI Ratios and Seasonal Factors for Yields on Corporate Bonds, Lowest Rating, One Month at a Time, 1948-65	91
2-18. Seasonal Factors for Long-Term Interest Rates, 1948-65	92
2-19. Original and Seasonally Adjusted Series of Treasury Bill Rates, 1948-65	96
2-20. Unmodified SI Ratios, Original and Implicit Seasonal Factors, and Kuznets' Factors for Treasury Bill Rates	103
2-21. SI Ratios, Original and Implicit Seasonal Factors, and Kuznets' Factors for Treasury Bill Rates, Selected Years	104
2-22. Seasonal Factors for Treasury Bill Rates, Money Supply, and Total Treasury Bills Outstanding, 1948-65	117
3-1. Yield Differentials, Callable Aa-Aaa Utility Bonds With Specified Coupon Rates Less Bonds With Coupons of $2\frac{3}{4}$ to $2\frac{7}{8}$ Per Cent, 1957-67	147
3-2. Yield Differentials, Callable Aa-Aaa Utility Bonds With Specified Coupon Rates Less Bonds With Coupons of $2\frac{3}{4}$ to $2\frac{7}{8}$ Per Cent, Selected Months	148
3-3. Yield Differentials, Callable Aa-Aaa Utility Bonds With Specified Coupon Rates Less Bonds With Coupons of $2\frac{3}{4}$ to $2\frac{7}{8}$ Per Cent, January 1957-September 1961	149
3-4. Yield Differentials on Callable Aa-Aaa Utility Bonds: Bonds With Coupon Rate of $4\frac{1}{2}$ Per Cent Less Bonds With Coupon Rates of $2\frac{3}{4}$ to $2\frac{7}{8}$ Per Cent, 1957-67	156
4-1. Distribution of Effective Interest Rate for All Loans by Geographic Area, 100 Metropolitan Areas	205
5-1. Industrial Direct Placements, Weighted Average Simple Probabilities, Quarterly, 1951-61	297
5-2. Public Utility Direct Placements, Weighted Average Simple Probabilities, Quarterly, 1951-61	298
5-3. Finance Company Direct Placements, Weighted Average Simple Probabilities, Quarterly, 1951-61	298
5-4. Industrials, Weighted Average Probabilities to Maturity, Quarterly, 1951-61	301
5-5. Utilities, Weighted Average Probabilities to Maturity, Quarterly, 1951-61	301
5-6. Finance Companies, Weighted Average Probabilities to Maturity, Quarterly, 1951-61	302
5-7. Industrials, Yield on Long-Term Governments Divided by Computed Yield on Fixed Characteristic Direct Placements, Quarterly, 1951-61	305
5-8. Public Utilities, Yield on Long-Term Governments Divided by	

Computed Yield on Fixed Characteristic Direct Placements, Quarterly, 1951-61	305
5-9. Finance Companies' Issues, Yield on Long-Term Governments Divided by Computed Yield on Fixed Characteristic Direct Placements, Quarterly, 1951-61	306
5-10. Return on Long-Term Governments Divided by Return on Moody's Aaa's or Baa's, Quarterly, 1951-61	307
5-11. Deliveries, New Commitments, and Total Commitments of Direct Placements, Quarterly, 1951-61	314
5-12. Industrials, Weighted Average Probabilities to Maturity, Adjusted for Volume Effect and for Effect of Both Volume and Differential Call Deferment, Quarterly, 1951-61	326
5-13. Public Utilities, Weighted Average Probabilities to Maturity, Adjusted for Volume Effect and for Effect of Both Volume and Differential Call Deferment, Quarterly, 1951-61	326
5-14. Finance Companies, Weighted Average Probabilities to Maturity, Adjusted for Volume Effect and for Effect of Both Volume and Differential Call Deferment, Quarterly, 1951-61	327
6-1. Marginal Rates of Interest With Stable Expectations	347
6-2. Average Yield as a Function of Term to Maturity, Durand Data, 1900-54	351
6-3. Market Expectations of Future 91-day Bill Rates	361
6-4. Forward and Spot One-Year Rates on Government Securities	365
6-5. Yields of U.S. Government Securities, 1920-63	376
6-6. Yields of U.S. Government Securities, 1954-61	377
6-7. "Normal" or Average Yield Curve	380
6-8. Yield Curve at Cyclical Troughs	381
6-9. A Flat Yield Curve	382
6-10. Yield Curve at Cyclical Peaks	382
6-11. Effects of Alternative Expectations of Falling Rates Upon the Shape of Yield Curves	383
6-12. Yields of U.S. Government Securities, 1942-53	385
7-1. Spectral Density of Call Rate, 1890-1913	394
7-2. Spectral Density of Time Rate, 1890-1913	394
7-3. Coherence Between Time and Call Rate	395
7-4. Phase of Cross-Spectrum Between Call and Time Rates	395
7-5. Gain of Cross-Spectrum Between Time and Call Rates	396
7-6. Spectrum of Three-Week Bill Rate	403

Figures

2-1.	50
2-2.	118



Acknowledgments

The essays in this volume have benefited from the support of the Life Insurance Association of America, as well as computer time contributed by IBM and the University of Pennsylvania. Support for this project was also supplied by general funds of the National Bureau.

The editors are most appreciative of the assistance of H. Irving Forman in preparing the charts, and of Virginia Meltzer in editing the papers and handling the production arrangements.

They also wish to thank the members of the National Bureau Board Reading Committee: R.A. Gordon, Robert V. Roosa, and Eugene P. Foley.

