

This PDF is a selection from an out-of-print volume from the National Bureau of Economic Research

Volume Title: The Role of Agriculture in Economic Development

Volume Author/Editor: Erik Thorbecke, ed.

Volume Publisher: NBER

Volume ISBN: 0-87014-203-8

Volume URL: <http://www.nber.org/books/thor70-1>

Publication Date: 1970

Chapter Title: Front matter, "The Role of Agriculture in Economic Development"

Chapter Author: Erik Thorbecke

Chapter URL: <http://www.nber.org/chapters/c3359>

Chapter pages in book: (p. -10 - 0)

THE ROLE OF AGRICULTURE
IN ECONOMIC DEVELOPMENT

UNIVERSITIES-NATIONAL BUREAU
CONFERENCE SERIES

1. Problems in the Study of Economic Growth
(in mimeograph)
2. Conference on Business Cycles
3. Conference on Research in Business Finance
4. Regularization of Business Investment
5. Business Concentration and Price Policy
6. Capital Formation and Economic Growth
7. Policies to Combat Depression
8. The Measurement and Behavior of Unemployment
9. Problems in International Economics
(February 1958 Supplement to the *Review of
Economics and Statistics*)
10. The Quality and Economic Significance of Anticipations Data
11. Demographic and Economic Change in Developed Countries
12. Public Finances: Needs, Sources, and Utilization
13. The Rate and Direction of Inventive Activity: Economic
and Social Factors
14. Aspects of Labor Economics
15. Investment in Human Beings
16. The State of Monetary Economics
17. Transportation Economics
18. Determinants of Investment Behavior
19. National Economic Planning
20. Issues in Defense Economics
21. The Role of Agriculture in Economic Development

The Role of Agriculture in Economic Development

A CONFERENCE
OF THE UNIVERSITIES-NATIONAL BUREAU
COMMITTEE FOR ECONOMIC RESEARCH

Erik Thorbecke

IOWA STATE UNIVERSITY

Editor



NATIONAL BUREAU OF ECONOMIC RESEARCH
NEW YORK 1969

Distributed by COLUMBIA UNIVERSITY PRESS
NEW YORK AND LONDON

Copyright © 1969, National Bureau of Economic Research
All Rights Reserved
L.C. Card: 78-79876
SBN 87014-203-8
Printed in the United States of America

National Bureau of Economic Research

OFFICERS

Arthur F. Burns, *Honorary Chairman*
Theodore O. Yntema, *Chairman*
Walter W. Heller, *Vice Chairman*
John R. Meyer, *President*
Donald B. Woodward, *Treasurer*

Donald S. Shoup, *Director of Research Services and Planning*

Victor R. Fuchs, *Vice President-Research*
F. Thomas Juster, *Vice President-Research*
Douglas H. Eldridge, *Vice President-Administration*
Hal B. Lary, *Director of International Studies*

DIRECTORS AT LARGE

Joseph A. Beirne, *Communications Workers of America*
Arthur F. Burns, *The White House, Washington, D.C.*
Wallace J. Campbell, *Foundation for Cooperative Housing*
Erwin D. Canham, *Christian Science Monitor*
Robert A. Charpie, *The Cabot Corporation*
Solomon Fabricant, *New York University*
Frank W. Fetter, *Hanover, New Hampshire*
Eugene P. Foley, *Dreyfus Corporation*
Marion B. Folsom, *Rochester, New York*
Eli Goldston, *Eastern Gas and Fuel Associates*
Crawford H. Greenewalt, *E. I. du Pont de Nemours & Company*

David L. Grove, *IBM Corporation*
Walter W. Heller, *University of Minnesota*
Vivian W. Henderson, *Clark College*
John R. Meyer, *Yale University*
J. Irwin Miller, *Cummins Engine Company, Inc.*
Geoffrey H. Moore, *Bureau of Labor Statistics*
J. Wilson Newman, *Dun & Bradstreet, Inc.*
James J. O'Leary, *United States Trust Company of New York*
Robert V. Roosa, *Brown Brothers Harriman & Co.*
Boris Shishkin, *AFL-CIO*
Lazare Teper, *ILGWU*
Donald B. Woodward, *Riverside, Connecticut*
Theodore O. Yntema, *Oakland University*

DIRECTORS BY UNIVERSITY APPOINTMENT

Moses Abramovitz, *Stanford*
Charles H. Berry, *Princeton*
Francis M. Boddy, *Minnesota*
Tom E. Davis, *Cornell*
Otto Eckstein, *Harvard*
Walter D. Fisher, *Northwestern*
R. A. Gordon, *California*

Robert J. Lampman, *Wisconsin*
Maurice W. Lee, *North Carolina*
Lloyd G. Reynolds, *Yale*
Robert M. Solow, *Massachusetts Institute of Technology*
Henri Theil, *Chicago*
T. A. Wilson, *Toronto*

Willis J. Winn, *Pennsylvania*

DIRECTORS BY APPOINTMENT OF OTHER ORGANIZATIONS

Emilio G. Collado, *Committee for Economic Development*
Thomas D. Flynn, *American Institute of Certified Public Accountants*
Nathaniel Goldfinger, *AFL-CIO*
Harold G. Halcrow, *American Agricultural Economics Association*

Walter E. Hoadley, *American Finance Association*
Douglass C. North, *Economic History Association*
Murray Shields, *American Management Association*
George Cline Smith, *National Association of Business Economists*
Willard L. Thorp, *American Economic Association*
W. Allen Wallis, *American Statistical Association*

DIRECTORS EMERITI

Percival F. Brundage
Harold M. Groves
Gottfried Haberler

Albert J. Hettinger, Jr.
Harry W. Laidler

George B. Roberts
Harry Scherman

George Soule
Jacob Viner
Joseph H. Willits

SENIOR RESEARCH STAFF

Moses Abramovitz
Gary S. Becker
Phillip Cagan
(on leave)
Alfred H. Conrad
James S. Earley
Solomon Fabricant
Milton Friedman
Victor R. Fuchs
Raymond W. Goldsmith
Jack M. Guttentag
Daniel M. Holland
F. Thomas Juster
C. Harry Kahn

John W. Kendrick
Irving B. Kravis
Hal B. Lary
Robert E. Lipsey
John R. Meyer
Jacob Mincer
Ilse Mintz

Geoffrey H. Moore
(on leave)
Nancy Ruggles
Richard Ruggles
Robert P. Shay
George J. Stigler
Victor Zarnowitz

**Relation of National Bureau Directors
to Publications Reporting Conference Proceedings**

Since the present volume is a record of conference proceedings, it has been exempted from the rules governing submission of manuscripts to, and critical review by, the Board of Directors of the National Bureau.

(Resolution adopted July 6, 1948, as revised
November 21, 1949, and April 20, 1968)

Universities—National Bureau Committee for Economic Research

This committee is a cooperative venture of universities and the National Bureau. Its guiding objective is the encouragement of economic research on problems susceptible of objective treatment and of sufficiently broad scope to merit attention by institutions serving a scientific and public interest.

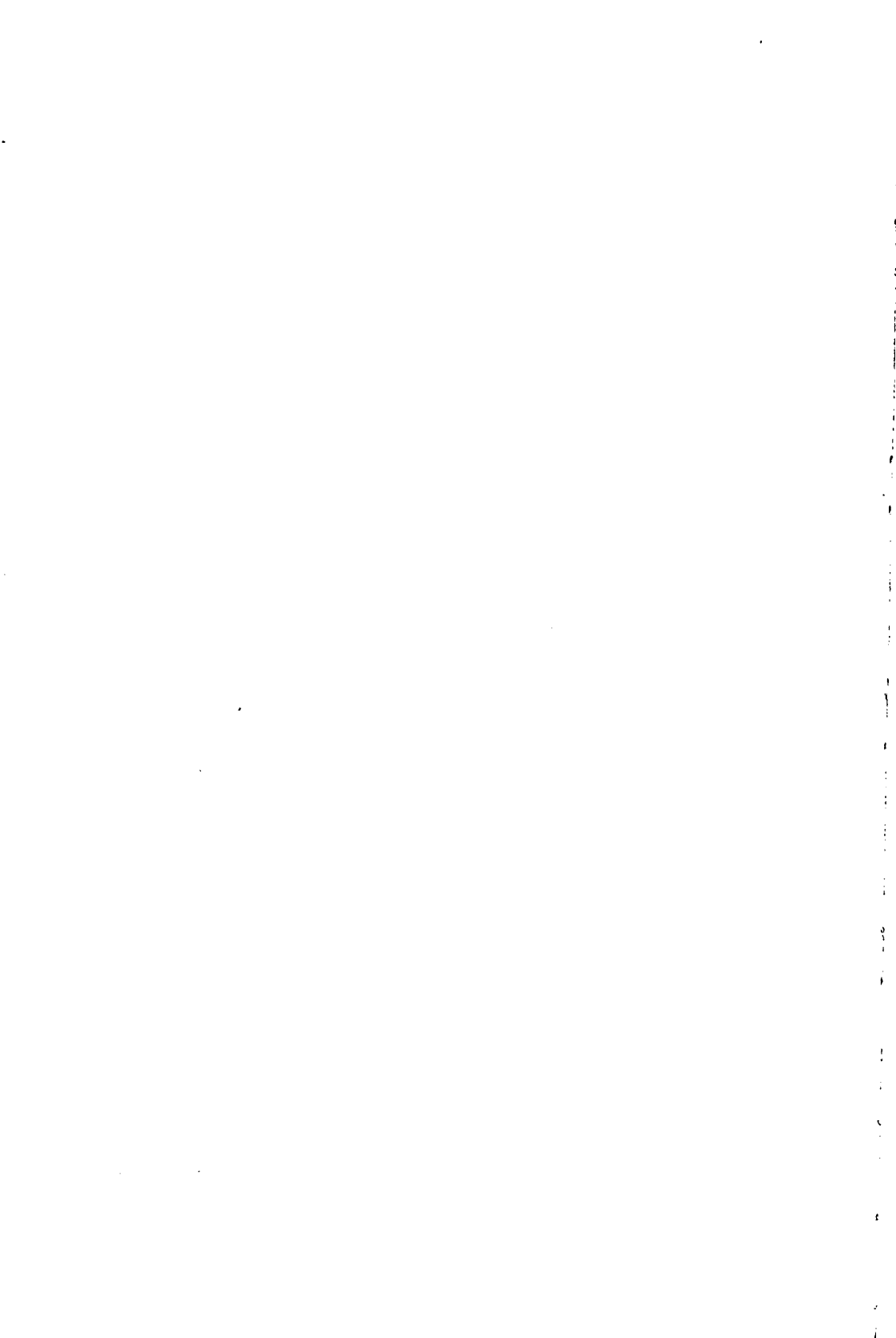
Participating universities and their present representatives are:

Buffalo, <i>Daniel Hamberg</i>	New York, <i>Bruno Stein</i>
California, Berkeley, <i>Albert Fishlow</i>	North Carolina, <i>Henry A. Latané</i>
California, Los Angeles, <i>William R. Allen</i>	Northwestern, <i>Richard B. Heflebower</i>
Carnegie-Mellon University, <i>Michael Lovell</i>	Ohio State, <i>Paul G. Craig</i>
Chicago, <i>H. Gregg Lewis</i>	Pennsylvania, <i>Almarin Phillips</i>
Columbia, <i>Phillip Cagan</i>	Pittsburgh, <i>Jacob Cohen</i>
Cornell, <i>Richard Selden</i>	Princeton, <i>Albert Rees</i>
Duke, <i>John Blackburn</i>	Queens, <i>David C. Smith</i>
Harvard, <i>James S. Duesenberry</i>	Rochester, <i>Richard N. Rosett</i>
Illinois, <i>Marvin Frankel</i>	Stanford, <i>Moses Abramovitz</i>
Indiana, <i>Robert W. Campbell</i>	Texas, <i>Wendell C. Gordon</i>
Iowa State, <i>Dudley G. Lockett</i>	Toronto, <i>Donald C. MacGregor</i>
Johns Hopkins, <i>Carl F. Christ</i>	Vanderbilt, <i>Rendigs Fels</i>
Massachusetts Institute of Technology, <i>Edwin Kuh</i>	Virginia, <i>G. Warren Nutter</i>
McGill, <i>Earl F. Beach</i>	Washington (Seattle), <i>Yoram Barzel</i>
Michigan, <i>Harvey E. Brazer</i>	Washington (St. Louis), <i>Hyman P. Minsky</i>
Michigan State, <i>Robert F. Lanzillotti</i>	Wisconsin, <i>Leonard W. Weiss</i>
Minnesota, <i>James M. Henderson</i>	Yale, <i>Richard Ruggles</i>
New School for Social Research, <i>Philip Nelson</i>	National Bureau of Economic Research, <i>Geoffrey H. Moore</i>

Members at large are:

Raymond T. Bowman	Martin R. Gainsbrugh	Herbert Stein
G. A. Elliott	Burton H. Klein	George J. Stigler
	Walter S. Salant	

The officers of the Universities—National Bureau Committee are: Carl F. Christ (Johns Hopkins University), Chairman; Walter S. Salant (Brookings Institution), Vice-Chairman; and Robert P. Shay (Columbia University), Secretary. The members of the Executive Committee are: Moses Abramovitz (Stanford University), Carl F. Christ, Rendigs Fels (Vanderbilt University), James M. Henderson (University of Minnesota), Geoffrey H. Moore (National Bureau of Economic Research), Almarin Phillips (University of Pennsylvania) and Walter S. Salant.



CONTENTS

Introduction	ERIK THORBECKE	3
--------------	----------------	---

AGRICULTURE IN THE WORLD ECONOMY

Prospects for Agricultural Trade of Less Developed Countries	LOUIS M. GOREUX	15
A Regional Model of Agricultural Development	J. A. C. BROWN	75
<i>Comment by Karl A. Fox</i>		93
Toward a Policy Model of World Economic Development with Special Attention to the Agricultural Sector	KARL A. FOX	95

THE RELATIONSHIP BETWEEN AGRICULTURE AND OTHER SECTORS

Agriculture in the Open Economy	JOHN C. H. FEI and GUSTAV RANIS	129
<i>Comment by W. Arthur Lewis</i>		159
<i>Reply by John C. H. Fei and Gustav Ranis</i>		163
Relationships between Agriculture, Nonagriculture, and Foreign Trade in the Development of Argentina and Peru	ERIK THORBECKE AND ALFRED J. FIELD	165
<i>Comment by Clark W. Reynolds</i>		213
<i>Reply by Erik Thorbecke and Alfred J. Field</i>		217
A Programming Model for a Dual Economy	JAN SANDEE	219
<i>Comment by Dale W. Jorgenson</i>		231

TRANSFORMATION OF TRADITIONAL AGRICULTURE

Comparative Study of Transformation of Agriculture in Centrally Planned Economies: The Soviet Union, Eastern Europe and Mainland China	JERZY F. KARCYZ	237
<i>Comment by John M. Montias</i>		266
<i>Reply by Jerzy F. Karcz</i>		274

The Transferability of the Japanese Pattern of Modernizing Traditional Agriculture KAZUSHI OHKAWA AND BRUCE F. JOHNSTON WITH APPENDIX NOTE BY JOHN COWNIE	277
<i>Comment by T. H. Lee</i>	303
The Transformation of Agriculture in a Presently Semi- Industrialized Country: The Case of Brazil WILLIAM H. NICHOLLS	311
<i>Comment by G. Edward Schuh</i>	379
Agricultural Planning: The Peruvian Experience HYLKE VAN DE WETERING	387
<i>Comment by Walter P. Falcon</i>	446
Index	451