

This PDF is a selection from an out-of-print volume from the National Bureau of Economic Research

Volume Title: The Labor Force in War and Transition: Four Countries

Volume Author/Editor: Clarence D. Long

Volume Publisher: UMI

Volume ISBN: 0-87014-351-4

Volume URL: <http://www.nber.org/books/long52-1>

Publication Date: 1952

Chapter Title: Front matter, The Labor Force in War and Transition Four Countries

Chapter Author: Clarence D. Long

Chapter URL: <http://www.nber.org/chapters/c3129>

Chapter pages in book: (p. -10 - 0)

# The Labor Force in War and Transition Four Countries

*What! a young knave, and begging!  
Is there not wars? Is there not employment?  
Doth not the King lack subjects?*

FALSTAFF

CLARENCE D. LONG

*Professor of Economics  
The Johns Hopkins University*

OCCASIONAL PAPER 36

NATIONAL BUREAU OF ECONOMIC RESEARCH, INC.

1952

*This paper owes much to the careful work of my assistants, Esther McPherson Donahue and Susan Dischka. H. Irving Forman drew the charts. Martha Anderson edited the manuscript. Arthur F. Burns, Solomon Fabricant, Thor Hultgren, Frederick C. Mills, Geoffrey H. Moore, Theodore W. Schultz, Boris Shishkin, George Stigler, and Leo Wolman read the manuscript at one stage or another and made comments in keeping with the best traditions of the National Bureau.*

CLARENCE D. LONG

Price: \$1.00

Copyright, 1952, by National Bureau of Economic Research, Inc.  
1819 Broadway, New York 23, N. Y. All Rights Reserved  
Typography by Oscar Leventhal, Inc.  
Printing by Basso Printing Corporation  
*Library of Congress Catalog Card Number: 52-6745*

OFFICERS

1952

Harry Scherman, *Chairman*  
C. C. Balderston, *President*  
Percival F. Brundage, *Vice-President*  
George B. Roberts, *Treasurer*  
W. J. Carson, *Executive Director*

DIRECTORS AT LARGE

Donald R. Belcher, *American Telephone and Telegraph Company*  
Oswald W. Knauth, *Beaufort, South Carolina*  
Simon Kuznets, *University of Pennsylvania*  
H. W. Laidler, *Executive Director, League for Industrial Democracy*  
Shepard Morgan, *New York City*  
C. Reinold Noyes, *Princeton, New Jersey*  
George B. Roberts, *Vice-President, National City Bank*  
Beardsley Ruml, *New York City*  
Harry Scherman, *Chairman, Book-of-the-Month Club*  
George Soule, *Bennington College*  
N. I. Stone, *Consulting Economist*  
J. Raymond Walsh, *New York City*  
Leo Wolman, *Columbia University*  
Theodore O. Yntema, *Vice President-Finance, Ford Motor Company*

DIRECTORS BY UNIVERSITY APPOINTMENT

E. Wight Bakke, *Yale*  
C. C. Balderston, *Pennsylvania*  
Arthur F. Burns, *Columbia*  
G. A. Elliott, *Toronto*  
Frank W. Fetter, *Northwestern*  
H. M. Groves, *Wisconsin*  
Gottfried Haberler, *Harvard*  
Clarence Heer, *North Carolina*  
R. L. Kozelka, *Minnesota*  
Paul M. O'Leary, *Cornell*  
T. W. Schultz, *Chicago*

DIRECTORS APPOINTED BY OTHER ORGANIZATIONS

Percival F. Brundage, *American Institute of Accountants*  
Frederick C. Mills, *American Statistical Association*  
S. H. Ruttenger, *Congress of Industrial Organizations*  
Murray Shields, *American Management Association*  
Boris Shishkin, *American Federation of Labor*  
Donald H. Wallace, *American Economic Association*  
Frederick V. Waugh, *American Farm Economic Association*  
Harold F. Williamson, *Economic History Association*

RESEARCH STAFF

Arthur F. Burns, *Director of Research*  
Geoffrey H. Moore, *Associate Director of Research*  
Moses Abramovitz  
Harold Barger  
Morris A. Copeland  
Daniel Creamer  
David Durand  
Solomon Fabricant  
Milton Friedman  
Millard Hastay  
W. Braddock Hickman  
Leo Wolman  
F. F. Hill  
Thor Hultgren  
Simon Kuznets  
Clarence D. Long  
Ruth P. Mack  
Frederick C. Mills  
Raymond J. Saulnier  
Lawrence H. Seltzer  
George J. Stigler

RELATION OF THE DIRECTORS  
TO THE WORK AND PUBLICATIONS  
OF THE NATIONAL BUREAU OF ECONOMIC RESEARCH

1. The object of the National Bureau of Economic Research is to ascertain and to present to the public important economic facts and their interpretation in a scientific and impartial manner. The Board of Directors is charged with the responsibility of ensuring that the work of the National Bureau is carried on in strict conformity with this object.

2. To this end the Board of Directors shall appoint one or more Directors of Research.

3. The Director or Directors of Research shall submit to the members of the Board, or to its Executive Committee, for their formal adoption, all specific proposals concerning researches to be instituted.

4. No report shall be published until the Director or Directors of Research shall have submitted to the Board a summary drawing attention to the character of the data and their utilization in the report, the nature and treatment of the problems involved, the main conclusions and such other information as in their opinion would serve to determine the suitability of the report for publication in accordance with the principles of the National Bureau.

5. A copy of any manuscript proposed for publication shall also be submitted to each member of the Board. For each manuscript to be so submitted a special committee shall be appointed by the President, or at his designation by the Executive Director, consisting of three Directors selected as nearly as may be one from each general division of the Board. The names of the special manuscript committee shall be stated to each Director when the summary and report described in paragraph (4) are sent to him. It shall be the duty of each member of the committee to read the manuscript. If each member of the special committee signifies his approval within thirty days, the manuscript may be published. If each member of the special committee has not signified his approval within thirty days of the transmittal of the report and manuscript, the Director of Research shall then notify each member of the Board, requesting approval or disapproval of publication, and thirty additional days shall be granted for this purpose. The manuscript shall then not be published unless at least a majority of the entire Board and a two-thirds majority of those members of the Board who shall have voted on the proposal within the time fixed for the receipt of votes on the publication proposed shall have approved.

6. No manuscript may be published, though approved by each member of the special committee, until forty-five days have elapsed from the transmittal of the summary and report. The interval is allowed for the receipt of any memorandum of dissent or reservation, together with a brief statement of his reasons, that any member may wish to express; and such memorandum of dissent or reservation shall be published with the manuscript if he so desires. Publication does not, however, imply that each member of the Board has read the manuscript, or that either members of the Board in general, or of the special committee, have passed upon its validity in every detail.

7. A copy of this resolution shall, unless otherwise determined by the Board, be printed in each copy of every National Bureau book.

*(Resolution adopted October 25, 1926 and revised February 6, 1933 and February 24, 1941)*

2,005,990

National Bureau of Economic Research, Inc.

**Long, Clarence Dickinson, 1908-**

The labor force in war and transition, four countries.

New York, National Bureau of Economic Research, 1952.

61 p. illus. 23 cm. (National Bureau of Economic Research, Occasional paper 36)

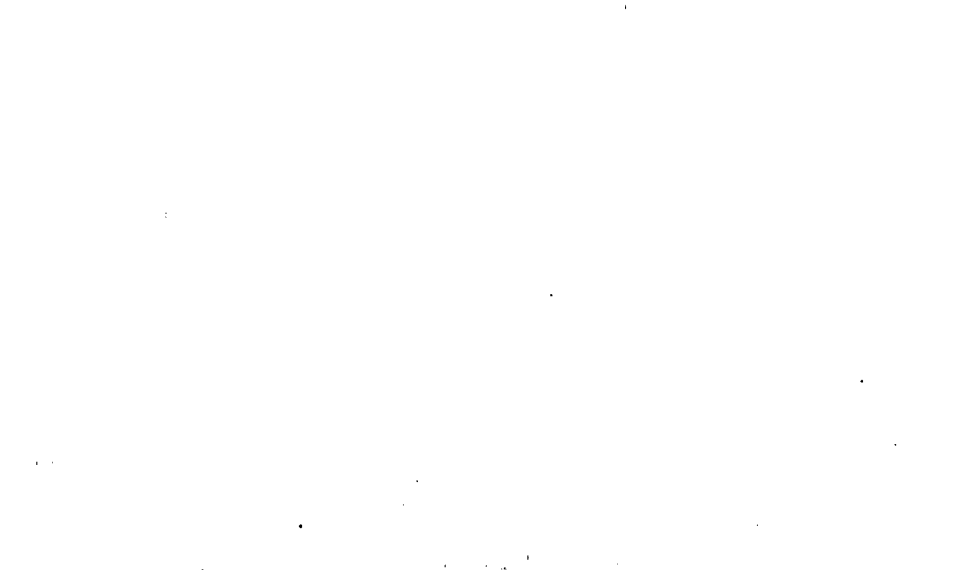
1. Labor supply. 2. World War, 1939-1945—Manpower. I. Title.

H11.N2432 no. 36

331.112

52-6745 †

MATERIAL SUBMITTED BY PUBLISHER.



2,005,990

National Bureau of Economic Research, Inc.

**Long, Clarence Dickinson, 1908-**

The labor force in war and transition, four countries.

New York, National Bureau of Economic Research, 1952.

61 p. Illus. 23 cm. (National Bureau of Economic Research, Occasional paper 36)

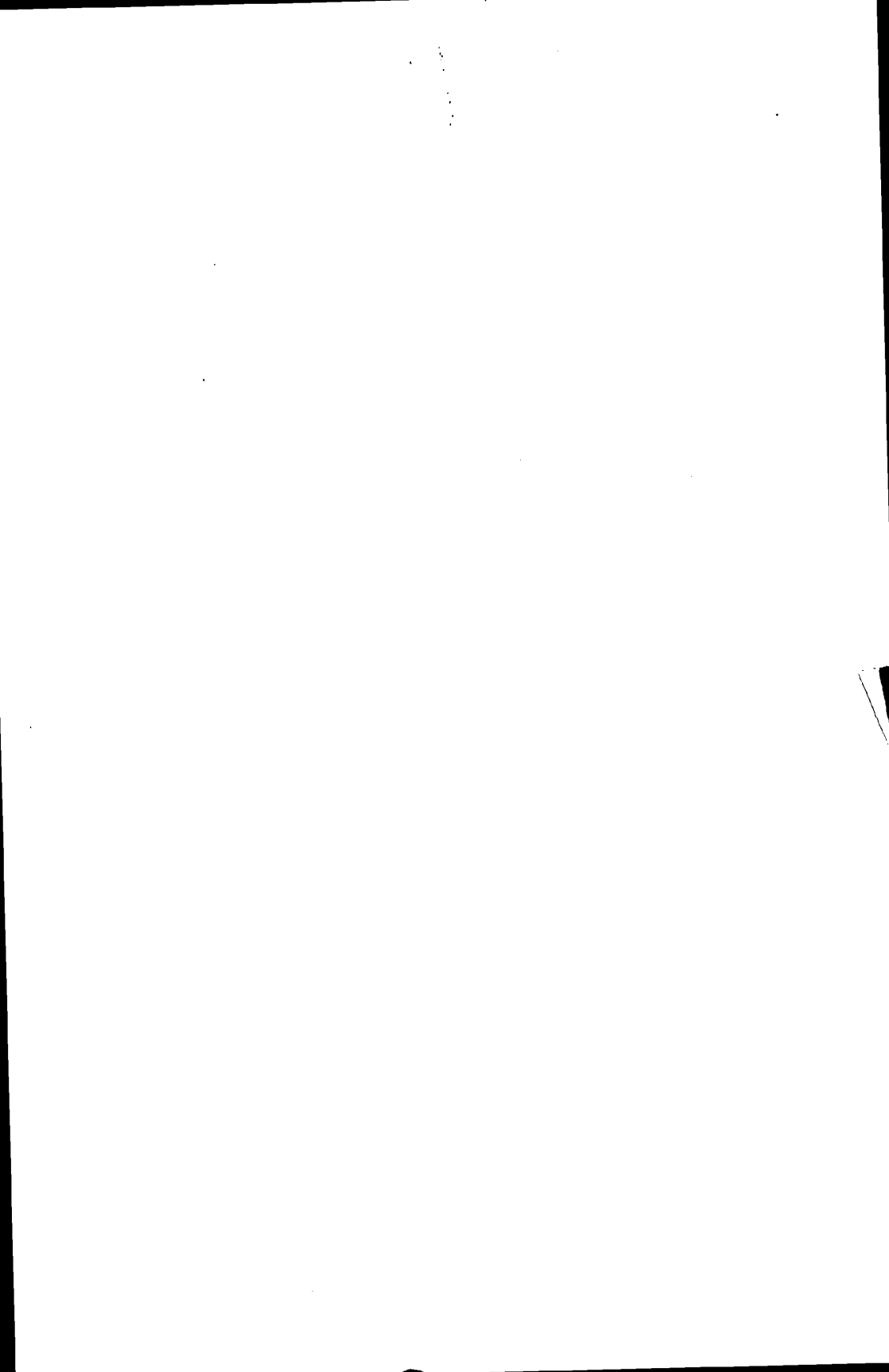
1. Labor supply. 2. World War, 1939-1945--Manpower. i. Title.

H11.N2432 no. 36

331.112

52-6745 †

MATERIAL SUBMITTED BY PUBLISHER.



## CONTENTS

1	Summary	1
2	The Labor Force before World War II	5
	Labor Force Concept and Coverage	6
3	The Labor Force in Mobilization: United States, Great Britain, Germany	8
	Mid-1939 to the Invasion of Russia	9
	To the Triumph in North Africa	18
	To the Victory in Europe	22
	Labor Force, Armed Forces, and Unemployment	25
4	The War Peak: United States, Great Britain, Canada, Germany	32
	Wartime Additions by Age and Sex Earning Groups	36
5	Weakness of German Manpower Policy Explained	37
6	Increase in Hours during World War II: United States	45
7	Demobilization	46
8	The Korean War and Possibilities for Further Expansion	48

### TABLE

1	Labor Force by Employment and Military Status: Four Countries, Both Sexes 14 and Older	16
2	Additions to Employment and Labor Force by Sources: Both Sexes 14 and Older	18
3	Need for Females in Housework Based on Population to be Cared for: United States, April 1940-1951	28
4	Need for Houseworkers as Factor Determining Size of Female Labor Force: United States, April 1940-1951	30
5	Peak Excess of World War II Labor Force (including armed forces) over Prewar or Early War	34
6	Peak Excess of World War II Labor Force (including armed forces) per 1,000 Population of Similar Age and Sex	37
7	Additions of Females to Labor Force in World War II and Two Factors Accounting for Them	40

8	Allotments and Allowances to Dependents of Armed Force Members: United States, Great Britain, Canada, Germany	42
9	Wartime Gain in Equivalent Fulltime Employment due to Increase in Hours (parttime and overtime combined): United States, April 1940-1946	46
10	Change in Equivalent Fulltime Employment due to Change in Extent of Parttime: United States, April 1940-1945	47
11	Wartime Gain in Equivalent Fulltime Employment due to Overtime: United States, April 1940-1945	47
12	Labor Force in Early Wartime by Employment and Military Status: Both Sexes 14 and Older, United States, April	49
A1	Labor Force by Employment and Military Status: United States, 1940-1951; Quarterly Averages, All Data except Armed Forces Adjusted for Seasonal Variation	52

#### CHART

1	Labor Force, Armed Forces, and Unemployed	9
2	Civilian Employment by Industrial Divisions, World War II	14
3	Armed Forces and Labor Force, Annual Increases, World War II: United States	26
4	Females Needed in Housework Based on Population to be Cared for: United States, April 1940-1951	29
5	Female Labor Force and Number Available: United States, April 1940-1951	31
6	Ratio of Labor Force to Armed Force Increases and Annual Decreases in Unemployment: United States, April 1940-1945	32
7	Labor Force per 1,000 Population 14 and Older, World War II	33