

This PDF is a selection from an out-of-print volume from the National Bureau of Economic Research

Volume Title: Trends in Employment in the Service Industries

Volume Author/Editor: George J. Stigler

Volume Publisher: UMI

Volume ISBN: 0-87014-058-2

Volume URL: <http://www.nber.org/books/stig56-1>

Publication Date: 1956

Chapter Title: Front matter, Trends in Employment in the Service Industries

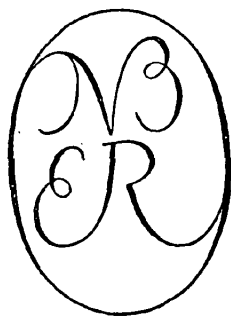
Chapter Author: George J. Stigler

Chapter URL: <http://www.nber.org/chapters/c2820>

Chapter pages in book: (p. -22 - 0)

Trends in Employment in the Service Industries

BY GEORGE J. STIGLER
Columbia University



A STUDY BY THE
NATIONAL BUREAU OF ECONOMIC RESEARCH, NEW YORK

PUBLISHED BY
PRINCETON UNIVERSITY PRESS, PRINCETON

1956

Copyright © 1956, by Princeton University Press
London: Geoffrey Cumberlege, Oxford University Press
All Rights Reserved

L.C. CARD 56-8390

Printed in the United States of America
by Princeton University Press, Princeton, New Jersey

TRENDS IN EMPLOYMENT
IN THE SERVICE INDUSTRIES

NATIONAL BUREAU OF ECONOMIC RESEARCH

NUMBER 59, GENERAL SERIES

OP 2,002,180

Stigler

er, George Joseph, 1911-
Trends in employment in the service industries. Princeton
, Princeton University Press, 1958.
xviii, 167 p. diagrs., tables. 24 cm. (National Bureau of Economic
Research. General series, no. 59)
"A study by the National Bureau of Economic Research, New
rk."

Bibliographical footnotes.

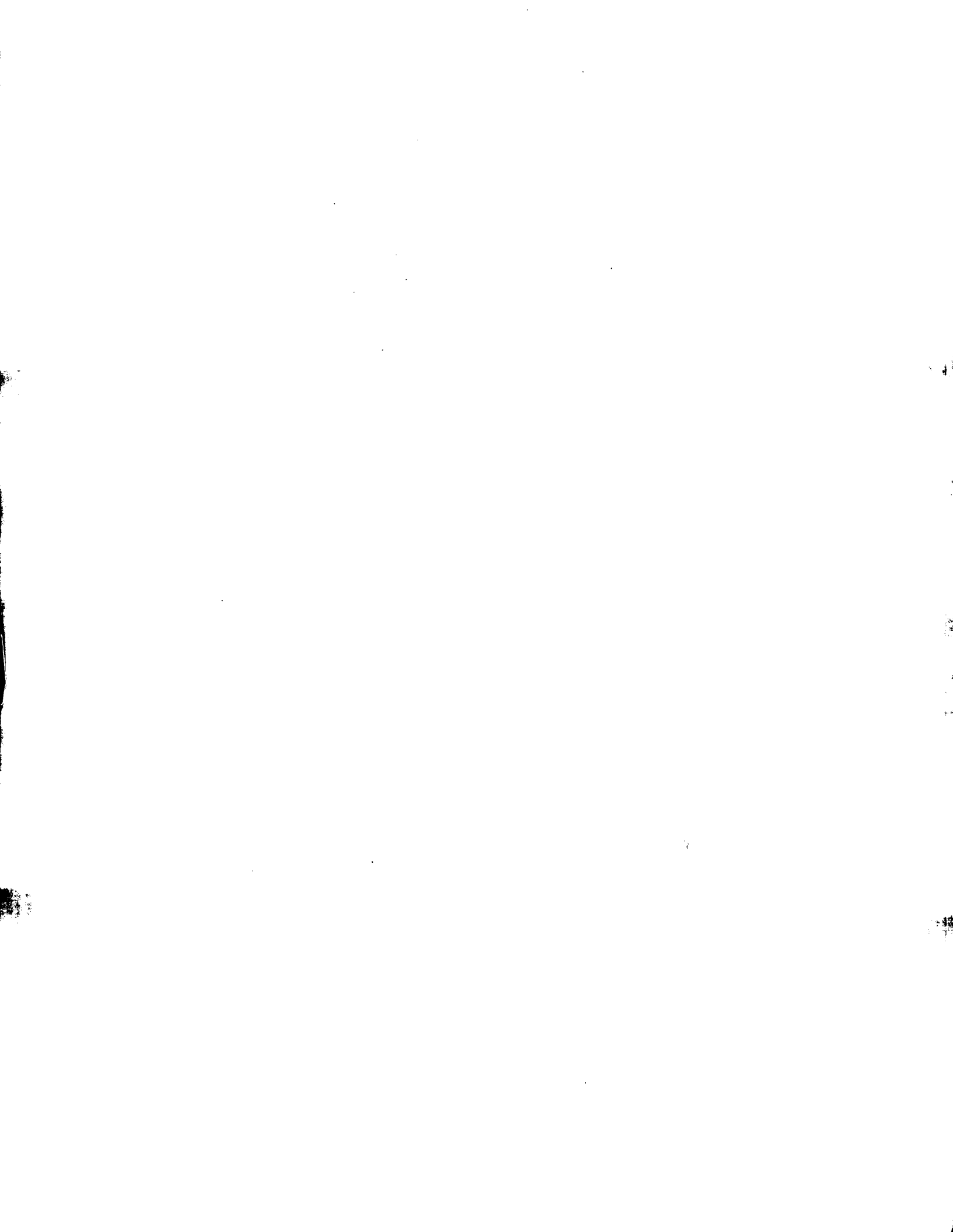
1. Service industries—U. S. 2. Labor and laboring classes—U. S.—
I. Title. (Series)

D5718.S46U57 339.4 56-8300

HD 5718

(Material submitted by publisher.)

K



INTERNAL WORK ORDER

DATE 8/28/74

BOOK

FILM

OP BOOK NO. 2,002,180 70

BILLING INSTRUCTIONS / NO CUSTOMER

Stigler, George Joseph.

Trends in employment in the service industries.

Princeton, Princeton University Press,

SUBMITTED

1956.

(National Bureau of Economic Research. General series, no. 59).

SERIES: National Bureau of Economic Research.

MIC. ONLY

56-8390-Ordered HD5718.

VOL.	S/P	F/O	UNIT S	PAGES	BINDS	FIG.	TITLE/DESC.	PRICE
				187	1			10.00
								11-5.00

LANGUAGE IF FOREIGN _____

CONTRACT September 14, 1973

ROYALTY TO: National Bureau of Economic Res.

ADDRESS _____

RESTRICTIONS NONE

1098 R.R. (IBM)

CAMERA INSTRUCTIONS

CAN BOOK BE CUT? NO
 FORMAT: 2A 2B 1A 1B
 REDUCTION RATIO 13:1
 ROLL NUMBER _____ VOLTS OPERATOR _____
 EXP. _____

DATE	PERMISSIONS	INITIALS
	ACK.	
8/9/74	CONTRACT TO: rec'd book from publisher	aak
	F/U	

20% RUSH/OUR EXPENSE 20% RUSH/CUSTOMER EXPENSE

INVOICE: _____ COPIES WANTED; VOUCHER: _____

P.O. NO. _____ PAID: _____

CUSTOMER INSTRUCTIONS NOT TAXABLE

NO. COPIES _____ XEROG. FILM FICHE

BOOK PAPER DUPLEX PAPER

BINDING: PAPER CLOTH

SILVERPRINTS _____ SUGG. ER _____ 13X1 _____

TO SEARCHING

BOOK/FILM REQUEST TO:

Book in good condition

TO INSPECTION

Due 9/15/74 PUB.

1

National Bureau of Economic Research

1956

OFFICERS

Harry Scherman, *Chairman*
Gottfried Haberler, *President*
George B. Roberts, *Vice-President and Treasurer*
W. J. Carson, *Executive Director*

DIRECTORS AT LARGE

Wallace J. Campbell, *Director, Cooperative League of the USA*
Solomon Fabricant, *New York University*
Albert J. Hettinger, Jr., *Lazard Frères and Company*
Oswald W. Knauth, *Beaufort, South Carolina*
H. W. Laidler, *Executive Director, League for Industrial Democracy*
Shepard Morgan, *Norfolk, Connecticut*
George B. Roberts, *Vice-President, The First National City Bank of New York*
Beardsley Ruml, *New York City*
Harry Scherman, *Chairman, Book-of-the-Month Club*
George Soule, *Bennington College*
N. I. Stone, *Consulting Economist*
J. Raymond Walsh, *New York City*
Joseph H. Willits, *Director, The Educational Survey, University of Pennsylvania*
Leo Wolman, *Columbia University*
Donald B. Woodward, *Vick Chemical Company*
Theodore O. Yntema, *Vice-President—Finance, Ford Motor Company*

DIRECTORS BY UNIVERSITY APPOINTMENT

E. Wight Bakke, <i>Yale</i>	Gottfried Haberler, <i>Harvard</i>
Arthur F. Burns, <i>Columbia</i>	Clarence Heer, <i>North Carolina</i>
Melvin G. de Chazeau, <i>Cornell</i>	R. L. Kozelka, <i>Minnesota</i>
G. A. Elliott, <i>Toronto</i>	C. Arthur Kulp, <i>Pennsylvania</i>
Frank W. Fetter, <i>Northwestern</i>	T. W. Schultz, <i>Chicago</i>
H. M. Groves, <i>Wisconsin</i>	Jacob Viner, <i>Princeton</i>

DIRECTORS APPOINTED BY OTHER ORGANIZATIONS

Percival F. Brundage, *American Institute of Accountants*
Harold G. Halcrow, *American Farm Economic Association*
S. H. Ruttenberg, *Congress of Industrial Organizations*
Murray Shields, *American Management Association*
Boris Shishkin, *American Federation of Labor*
Willard L. Thorp, *American Economic Association*
W. Allen Wallis, *American Statistical Association*
Harold F. Williamson, *Economic History Association*

RESEARCH STAFF

Solomon Fabricant, *Director of Research*
Geoffrey H. Moore, *Associate Director of Research*
Moses Abramovitz
Morris A. Copeland
David Durand
Milton Friedman
Raymond W. Goldsmith
Millard Hastay
W. Braddock Hickman
Daniel M. Holland
Thor Hultgren
John W. Kendrick
Simon Kuznets
Clarence D. Long
Ruth P. Mack
Ilse Mintz
G. Warren Nutter
Lawrence H. Seltzer
George J. Stigler
Leo Wolman
Herbert B. Woolley

RELATION OF THE DIRECTORS
TO THE WORK AND PUBLICATIONS
OF THE NATIONAL BUREAU OF ECONOMIC RESEARCH

1. The object of the National Bureau of Economic Research is to ascertain and to present to the public important economic facts and their interpretation in a scientific and impartial manner. The Board of Directors is charged with the responsibility of ensuring that the work of the National Bureau is carried on in strict conformity with this object.

2. To this end the Board of Directors shall appoint one or more Directors of Research.

3. The Director or Directors of Research shall submit to the members of the Board, or to its Executive Committee, for their formal adoption, all specific proposals concerning researches to be instituted.

4. No report shall be published until the Director or Directors of Research shall have submitted to the board a summary drawing attention to the character of the data and their utilization in the report, the nature and treatment of the problems involved, the main conclusions and such other information as in their opinion would serve to determine the suitability of the report for publication in accordance with the principles of the National Bureau.

5. A copy of any manuscript proposed for publication shall also be submitted to each member of the Board. For each manuscript to be so submitted a special committee shall be appointed by the President, or at his designation by the Executive Director, consisting of three Directors selected as nearly as may be one from each general division of the Board. The names of the special manuscript committee shall be stated to each Director when the summary and report described in paragraph (4) are sent to him. It shall be the duty of each member of the committee to read the manuscript. If each member of the special committee signifies his approval within thirty days, the manuscript may be published. If each member of the special committee has not signified his approval within thirty days of the transmittal of the report and manuscript, the Director of Research shall then notify each member of the Board, requesting approval or disapproval of publication, and thirty additional days shall be granted for this purpose. The manuscript shall then not be published unless at least a majority of the entire Board and a two-thirds majority of those members of the Board who shall have voted on the proposal within the time fixed for the receipt of votes on the publication proposed shall have approved.

6. No manuscript may be published, though approved by each member of the special committee, until forty-five days have elapsed from the transmittal of the summary and report. The interval is allowed for the receipt of any memorandum of dissent or reservation, together with a brief statement of his reasons, that any member may wish to express; and such memorandum of dissent or reservation shall be published with the manuscript if he so desires. Publication does not, however, imply that each member of the Board has read the manuscript, or that either members of the Board in general, or of the special committee, have passed upon its validity in every detail.

7. A copy of this resolution shall, unless otherwise determined by the Board, be printed in each copy of every National Bureau book.

*(Resolution adopted October 25, 1926 and revised February 6, 1933
and February 24, 1941)*

*OTHER NATIONAL BUREAU REPORTS IN THIS SERIES
DEALING WITH PRODUCTION, EMPLOYMENT, AND
PRODUCTIVITY IN AMERICAN INDUSTRY*

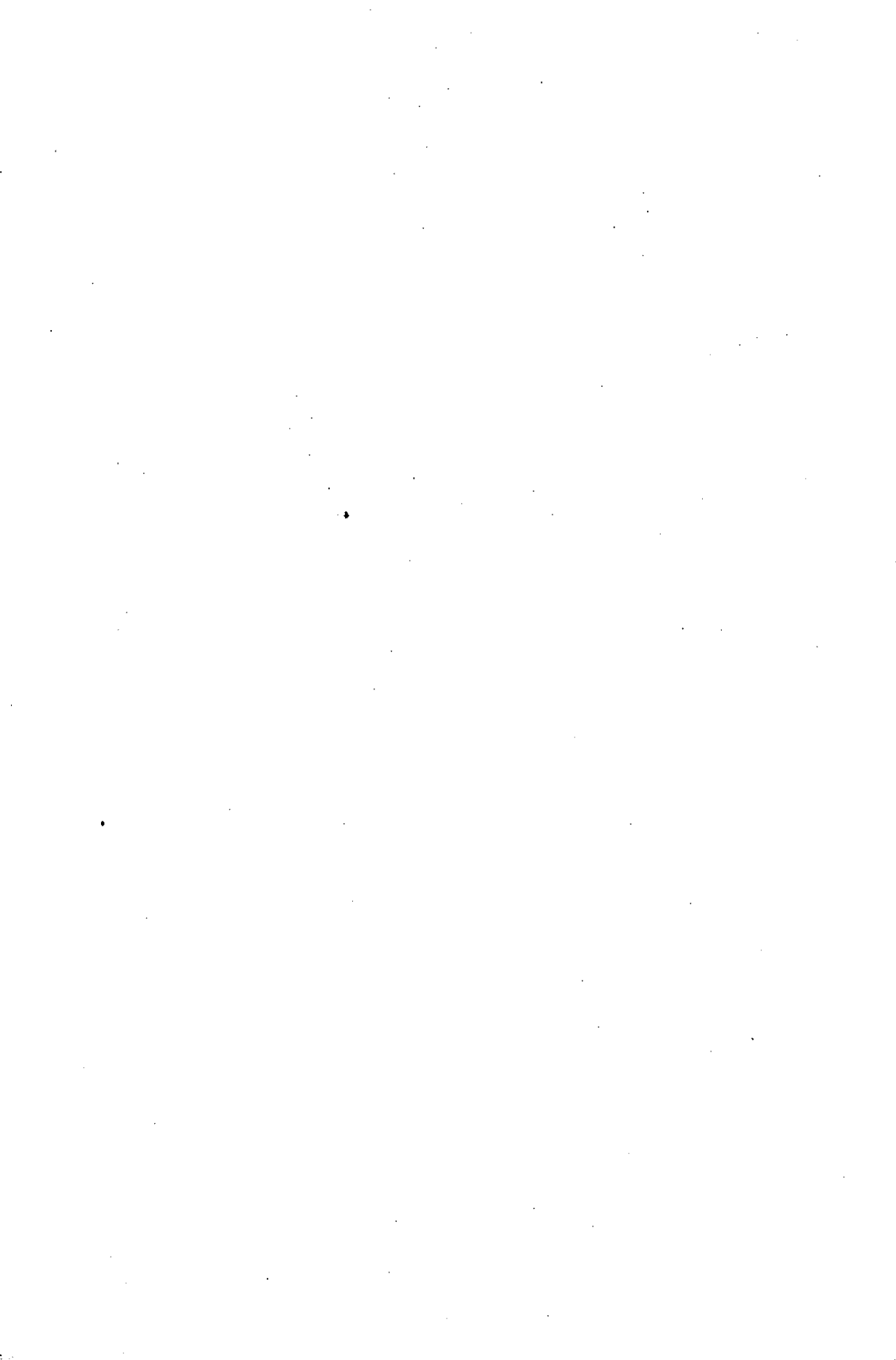
BOOKS

- | | |
|---|--|
| *The Output of Manufacturing Industries, 1899-1937 (1940) | Solomon Fabricant |
| *Employment in Manufacturing, 1899-1939: An Analysis of Its Relation to the Volume of Production (1942) | Solomon Fabricant |
| *American Agriculture, 1899-1939: A Study of Output, Employment and Productivity (1942) | Harold Barger and
Hans H. Landsberg |
| *The Mining Industries, 1899-1939: A Study of Output, Employment and Productivity (1944) | Harold Barger and
Sam H. Schurr |
| Output and Productivity in the Electric and Gas Utilities, 1899-1942 (1946) | J. M. Gould |
| Trends in Output and Employment (1947) | George J. Stigler |
| The Transportation Industries, 1889-1946: A Study of Output, Employment and Productivity (1951) | Harold Barger |
| The Trend of Government Activity in the United States since 1900 (1952) | Solomon Fabricant |
| Distribution's Place in the American Economy since 1869 (1955) | Harold Barger |

OCCASIONAL PAPERS

- | | |
|---|--------------------|
| *Manufacturing Output, 1929-1937 (1940) | Solomon Fabricant |
| *The Relation between Factory Employment and Output since 1899 (1941) | Solomon Fabricant |
| *Productivity of Labor in Peace and War (1942) | Solomon Fabricant |
| Labor Savings in American Industry, 1899-1939 (1945) | Solomon Fabricant |
| Domestic Servants in the United States, 1900-1940 (1946) | George J. Stigler |
| The Rising Trend of Government Employment (1949) | Solomon Fabricant |
| Employment and Compensation in Education (1950) | George J. Stigler |
| Productivity and Economic Progress (1952) | Frederick C. Mills |
- * Out of print.

The study upon which this volume and the previously issued reports as listed above are based was made possible by funds granted by The Maurice and Laura Falk Foundation of Pittsburgh. The Falk Foundation is not, however, the author, publisher, or proprietor of this publication, and is not to be understood as approving or disapproving by virtue of its grant any of the statements made or views expressed therein.



PREFACE

The National Bureau studies of employment and output first covered manufacturing, then mining, agriculture, and public utilities and transportation. The large remaining area, generally described as the service industries, has been partially surveyed in studies of government, trade, and, on a more modest scale, domestic service and education. This final essay deals with the service industries as a whole, and attempts to give some—although all too little—depth to the survey by dealing in more detail with selected industries.

I have profited by the suggestions of Harold Barger, David Blank, Solomon Fabricant, and Thor Hultgren. I must express my debt to Jack Farkas for performing most of the statistical work. The charts were drawn by H. Irving Forman.

GEORGE J. STIGLER



CONTENTS

Preface	ix
1. The Growth of the Service Industries	3
1. The Trend of the Service Industries	5
2. The Public Economy	9
2. A Historical Preface	14
1. Population	14
2. The Progress of Communication	20
3. Income	24
Technical Appendix: Budget Data and Consumption Trends	26
1. Employment in Service Industries	26
2. Food Consumption	41
3. Composition of Total Expenditures	42
3. The Classification and Characteristics of Service Industries	47
1. The Scope of the Service Industries	47
2. The Classification of Service Industries	49
Type of Buyer	49
Categories of Consumer Expenditure	50
Private vs. Public Activities	53
3. Characteristics of the Service Industries	53
Type of Business Organization	53
Labor Characteristics	55
Conclusion	59
4. Retail Trade	61
1. The Growth of Trade	61
2. Kinds of Business and Forms of Organization	63
Chain Stores	67
Department Stores	72
Mail-Order Stores	73
3. Factors in the Rising Employment in Trade	77
The Composition of Retail Output	78
Income	80
Urbanization	82
Other Population Changes	86
4. Conclusion	88

CONTENTS

5. Routine Personal Services	90
1. Domestic Service	93
Income	95
Population Characteristics	97
Technology	100
The Supply of Servants	100
2. Barber and Beauty Shops	101
6. The Professional Service Industries	106
1. Trends in Numbers	106
Numbers in the Professions	106
2. Recruitment and Business Organization	111
Law	111
Medicine	113
College Teachers	116
Military Officers	120
3. Professional Income	124
Age	125
Size of Community	126
Professional Training	127
Salary and Rank	128
Miscellaneous Factors	129
Inequality	130
The Trend of Incomes	132
7. The Business Services	138
1. Employment Trends in the Business Service Industries	139
2. Wholesale Trade	142
The Growth of Wholesale Trade	143
The Functions of the Wholesaler	146
The Independent Wholesaler	147
Appendix	152
8. Factors in the Trend of Employment in the Service Industries	157
1. Technology	157
2. Specialization	159
3. Income	160
4. Population Characteristics	162
5. The Supply of Labor	164
Index	167

TABLES

1. Percentage Composition of Expenditures of English Working Families, 1794 and 1937-1938	3
2. Average Income and Expenditures of Massachusetts Working Families, 1874-1875, 1901, and 1935-1936	4
3. The Labor Force in the Service Industries, 1870-1950	6
4. Labor Force in Service Industries as Per Cent of Total and Nonagricultural Labor Force, 1870-1950	7
5. Percentage Use of National Resources by Selected Service Industries, 1950	10
6. Government Employment by Industry, 1950	11
7. The Labor Force in Service Industries and in Government Employment, 1900-1950	12
8. Percentage Distribution of Rural and Urban Population, 1860-1950	16
9. Population Characteristics, 1860-1950	18
10. Net Immigration and Population Growth, 1870-1950	19
11. Average Annual National Income, 1869-1953	25
12. Income Elasticities of Urban Families, 1919, 1935-1936, and 1941	27
13. Percentage of Income Spent on Services by Families with \$1,500 Income, 1919, 1935-1936, and 1941	40
14. Changes in Per Capita Consumption of Twenty Foods from 1923-1925 to 1946-1948, Actual and Predicted	43
15. Percentage Changes in Consumer Expenditures, 1935-1936 to 1948	44
16. Service Industries and Their 1950 Employment	48
17. Employment in Service Industries by Categories of Consumer Expenditure, 1950	52

TABLES

18. Types of Business Organization and Their Shares of Receipts, 1945	54
19. Types of Business Organization and Their Share of Receipts in Service Industries, 1945	56
20. Average Number of Workers per Establishment and Percentage of Proprietors in the Labor Force, Various Industries, Selected Years	57
21. Educational Training and Sex of Labor Force in Selected Industries, 1940	59
22. The Labor Force in Trade, 1900-1950	62
23. The Labor Force in Eating and Drinking Places, 1900-1950	63
24. Percentage Distribution of Employment in Retail Trade by Kind of Business, 1929-1948	66
25. Chain Store Organizations, 1929-1948	71
26. Sales per Employee in Selected Lines of Retail Trade, 1939	72
27. Percentage Composition of Finished Consumer Goods, 1869-1949	78
28. Retail Expenditures per Family by Income Class, 1935-1936	83
29. Food Consumed and Purchased per Family, by Income Class, 1935-1936	84
30. Expenditures per Person of Urban Families with per Capita Incomes of \$800, 1941	87
31. The Growth of the Labor Force in Selected Non-professional Service Industries, 1900-1950	91
32. Employment in Power Laundries and Cleaning and Dyeing Establishments, 1899-1948	92
33. Percentage of Income Payments Received by Upper 1 Per Cent of Recipients, 1940	97
34. Family Expenditures for Household Service, by Income Class, 1935-1936	98

TABLES

35. Barbers, Hairdressers, etc., 1900-1950	101
36. Family Expenditures for Personal Care, by Income Class, 1935-1936	103
37. Number and Earnings (Full-Time) of Barbers in Selected States, 1948, by Apprenticeship Period	105
38. College-Trained Persons as a Percentage of All Members of Selected Occupations, 1940	107
39. Number of Persons in Selected Professions, 1900-1950	108
40. Enrollments in Institutions of Higher Education, 1900-1950	110
41. Lawyers by Type of Employment, 1951	113
42. Medical Schools and Their Graduates, 1900-1952	114
43. Distribution of Physicians by Type of Organization, 1949	115
44. Percentage Composition of Educational and General Income of Colleges, Universities, and Technical Schools, 1950	118
45. Military Officers by Educational Institution from Which Graduated, 1950	121
46. Faculty Degrees and Experience, United States Military Academy, 1953	122
47. Active Military Officers by Rank, 1949	124
48. Mean Net Income of Nonsalaried Physicians, 1949, and Lawyers in Independent Practice, 1947, by Size of Community	127
49. Salaries of Army Officers by Rank, 1929, 1949, and Allowances	129
50. Median Salaries of Teachers in Land Grant Institutions by Rank, 1929, 1940, 1950 Salaries	129
51. Earnings of Independent Practitioners and Salaries of College Teachers and Commissioned Army Officers, 1929-1952	134

TABLES

52. Incomes in Selected Professions Relative to General Labor Force, 1929 and 1949	137
53. Labor Force in Selected Business Service Industries, 1930-1950	139
54. The Labor Force in Finance, Insurance, and Real Estate, 1910-1950	140
55. Premiums of Insurance Companies, 1869-1950	141
56. Employment and Sales in Wholesale Trade, 1929-1948	143
57. Per Cent of Manufactures Wholesaled by Manufacturers, 1909-1947, Based on Assumption That Manufacturers' Share in Each Industry Was Constant at 1939 Level	149
58. Per Cent of Selected Consumer Goods Distributed by Independent Wholesalers and Advertising Expenditures as a Per Cent of Manufacturers' Sales, 1939	151
59. Shares of Retail Sales Made by Chain Stores and Share of Goods Sold by Independent Wholesalers, 1939	151

CHARTS

1. Population of the United States, 1860-1950, Showing Total Population, Population under 15 Years of Age and Population 60 Years of Age and Over 15
2. Percentage Distribution of Population by Community Size United States, 1860-1950, England and Wales, 1871-1951 17
3. Wheat Prices by State 21
4. Advertising Receipts of Newspapers, Periodicals and Radio, and Population Growth; 1867-1950 23
5. Expenditures of Urban Families in the U.S. on Laundry Sent Out, by Income, 1919, 1935-36, 1941 28
6. Expenditures of Urban Families in the U.S. on Barbers and Beauty Parlors by Income, 1919, 1935-36, 1941 29
7. Expenditures of Urban Families in the U.S. on Physicians and Oculists by Income, 1919, 1935-36, 1941 30
8. Expenditures of Urban Families in the U.S. on Dental Care, by Income, 1919, 1935-36, 1941 31
9. Expenditures of Urban Families in the U.S. on Other Medical Care, by Income, 1919, 1935-36, 1941 32
10. Expenditures of Urban Families in the U.S. on Movies, by Income, 1919, 1935-36, 1941 33
11. Expenditures of Urban Families in the U.S. on Other Amusements, by Income, 1919, 1935-36, 1941 34
12. Expenditures of Urban Families in the U.S. on Church Contributions, by Income, 1919, 1935-36, 1941 35
13. Expenditures of Urban Families in the U.S. on Gifts Other than Church Contributions by Income, 1919, 1935-36, 1941 36
14. Average Annual Expenditures by Urban Families in the U.S. on Life Insurance by Income, 1919, 1941 37

CHARTS

15. Expenditures of Urban Families in the U.S. on Servants, by Income, 1919, 1935-36, 1941	38
16. Expenditures of Urban Families in the U.S. on Food Outside Home, by Income, 1935-36, 1941	39
17. Dealers in Retail Trade, 1870-1940	65
18. Growth of Combination Grocery Chains, 1913-1950; Volume of Sales	68
19. Growth of Variety Store Chains, 1906-1950; Volume of Sales	69
20. Growth of Chain Stores, Number of Stores, 1900-1948	70
21. Department Store Sales, 1890-1950	74
22. Mail Order Sales, 1891-1950	76
23. Relation Between Per Cent of Labor Force in Trade and Per Capita Income, 1919-1950	81
24. The Growth of Selected Nonprofessional Service Industries, 1899-1950	93
25. Personal Consumption Expenditures on Barber Shop and Beauty Parlor Services, and Disposable Personal Income, 1929-1950	104
26. Growth in Four Selected Professions, 1900-1950	109
27. Cost of Living Index and Average Annual Tuition Fees in Arts Colleges, 1900-1953	119
28. Relationship of Age to Income for Four Professions	126
29. Lorenz Curves of Salaries of Physicians, Lawyers, Army Commissioned Officers and College Teachers in Land-Grant Institutions and of Net Income of Independent Practitioners in Law, Medicine and Dentistry, 1947-1950	131
30. Lorenz Curves of Net Income of Non-Salaried Lawyers, 1941, 1947 and Non-Salaried Physicians, 1941, 1949	133
31. Earnings of Independent Practitioners; Salaries of College Teachers and Army Commissioned Officers and Cost of Living Index, 1908-1952	136