

This PDF is a selection from an out-of-print volume from the National Bureau of Economic Research

Volume Title: Policies to Combat Depression

Volume Author/Editor: Universities-National Bureau Committee for Economic Research

Volume Publisher: NBER

Volume ISBN: 0-87014-198-8

Volume URL: <http://www.nber.org/books/univ56-1>

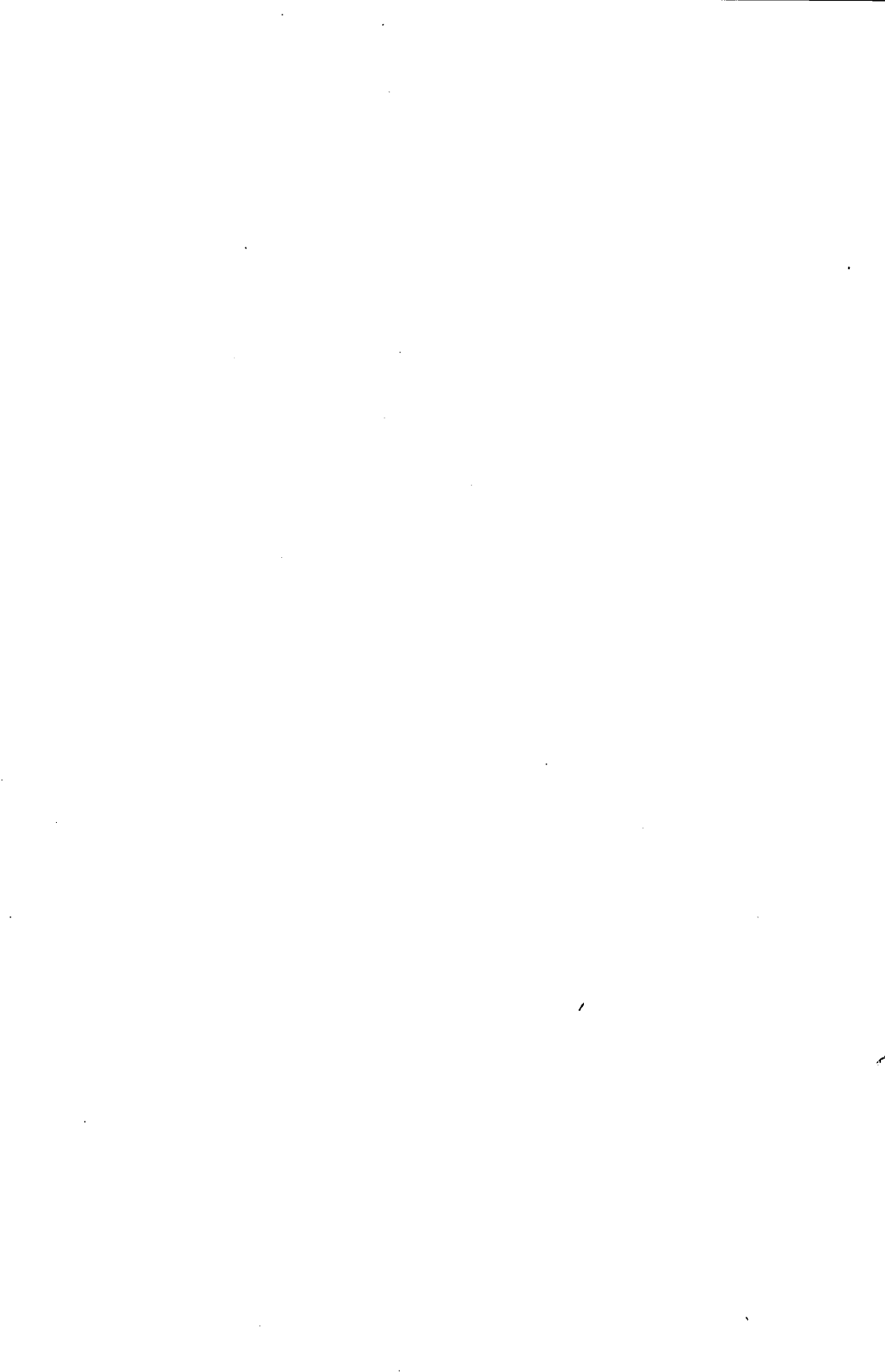
Publication Date: 1956

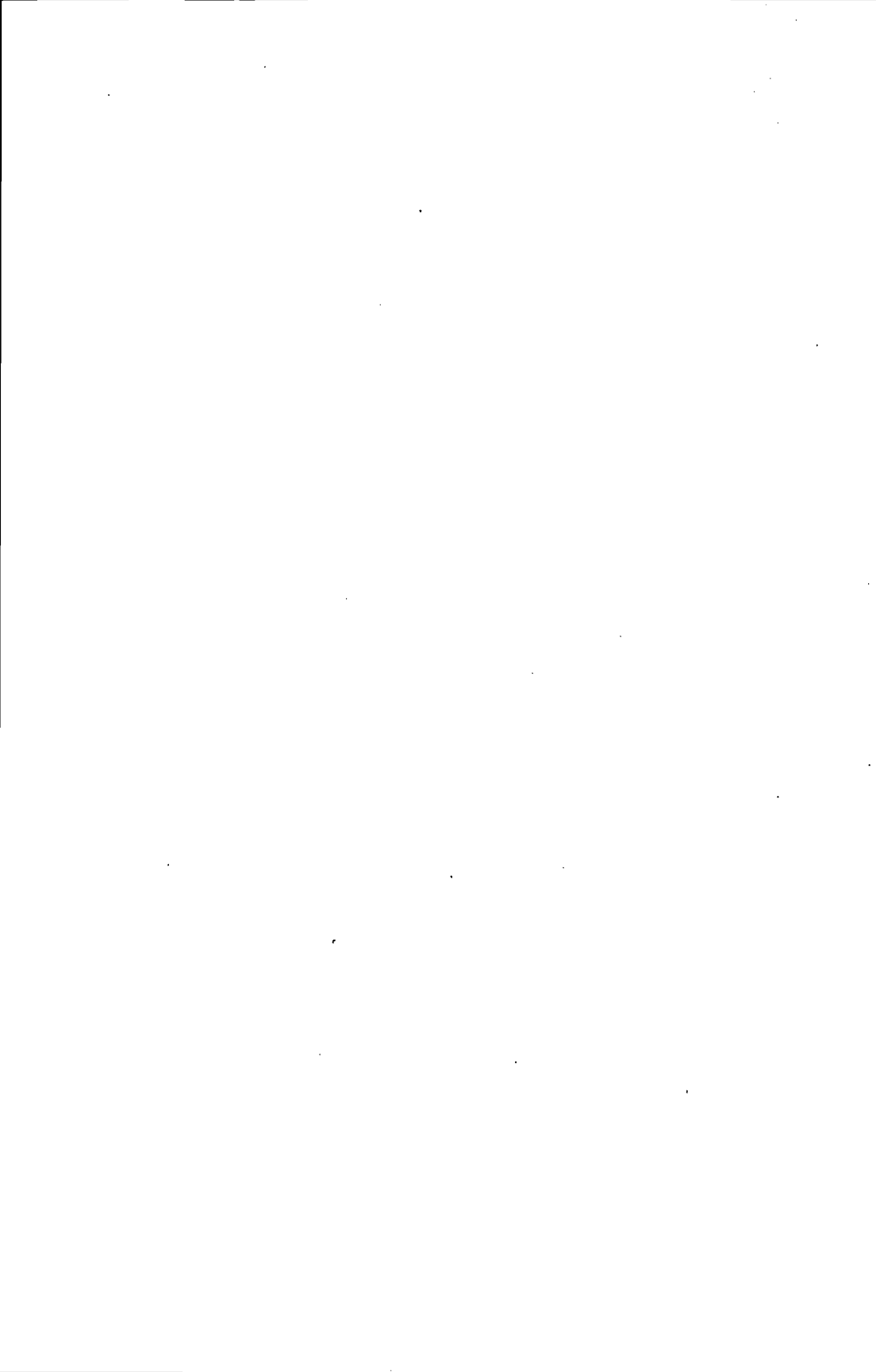
Chapter Title: Front matter, Policies to Combat Depression

Chapter Author: George J. Stigler, Chairman, Universities-National Bureau Committee for Economic Research

Chapter URL: <http://www.nber.org/chapters/c2795>

Chapter pages in book: (p. -12 - 0)





## **POLICIES TO COMBAT DEPRESSION**

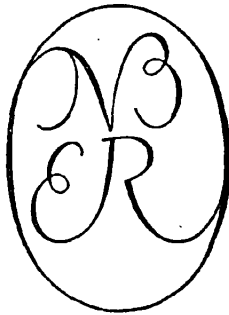
NATIONAL BUREAU OF ECONOMIC RESEARCH

*Special Conference Series*

1. Problems in the Study of Economic Growth (mimeographed)
2. Conference on Business Cycles
3. Conference on Research in Business Finance
4. Regularization of Business Investment
5. Business Concentration and Price Policy
6. Capital Formation and Economic Growth
7. Policies to Combat Depression
8. The Measurement and Behavior of Unemployment (in press)

# Policies to Combat Depression

A CONFERENCE OF THE  
UNIVERSITIES-NATIONAL BUREAU COMMITTEE  
FOR ECONOMIC RESEARCH



A REPORT OF THE  
NATIONAL BUREAU OF ECONOMIC RESEARCH, NEW YORK



PUBLISHED BY  
PRINCETON UNIVERSITY PRESS, PRINCETON

1956

Copyright © 1956, by Princeton University Press  
London: Geoffrey Cumberlege, Oxford University Press

L.C. CARD 55-10681

Printed in the United States of America  
by Vail-Ballou Press, Inc., Binghamton, N.Y.

# NATIONAL BUREAU OF ECONOMIC RESEARCH

## OFFICERS, 1955

Harry Scherman, *Chairman*  
Gottfried Haberler, *President*  
George B. Roberts, *Vice-President and Treasurer*  
W. J. Carson, *Executive Director*

## DIRECTORS AT LARGE

Wallace J. Campbell, *Director, Cooperative League of the USA*  
Solomon Fabricant, *New York University*  
Albert J. Hettinger, Jr., *Lazard Frères and Company*  
Oswald W. Knauth, *Beaufort, South Carolina*  
H. W. Laidler, *Executive Director, League for Industrial Democracy*  
Shepard Morgan, *Norfolk, Connecticut*  
George B. Roberts, *Vice-President, The First National City Bank of New York*  
Beardsley Rumml, *New York City*  
Harry Scherman, *Chairman, Book-of-the-Month Club*  
George Soule, *Bennington College*  
N. I. Stone, *Consulting Economist*  
J. Raymond Walsh, *New York City*  
Joseph H. Willits, *Director, The Educational Survey, University of Pennsylvania*  
Leo Wolman, *Columbia University*  
Donald B. Woodward, *Vick Chemical Company*  
Theodore O. Yntema, *Vice-President-Finance, Ford Motor Company*

## DIRECTORS BY UNIVERSITY APPOINTMENT

E. Wight Bakke, <i>Yale</i>	Gottfried Haberler, <i>Harvard</i>
Arthur F. Burns, <i>Columbia</i>	Clarence Heer, <i>North Carolina</i>
Melvin G. de Chazeau, <i>Cornell</i>	R. L. Kozelka, <i>Minnesota</i>
C. A. Elliott, <i>Toronto</i>	C. Arthur Kulp, <i>Pennsylvania</i>
Frank W. Fetter, <i>Northwestern</i>	T. W. Schultz, <i>Chicago</i>
H. M. Groves, <i>Wisconsin</i>	Jacob Viner, <i>Princeton</i>

## DIRECTORS APPOINTED BY OTHER ORGANIZATIONS

Percival F. Brundage, *American Institute of Accountants*  
S. H. Ruttenberg, *Congress of Industrial Organizations*  
Murray Shields, *American Management Association*  
Boris Shishkin, *American Federation of Labor*  
W. Allen Wallis, *American Statistical Association*  
Frederick V. Waugh, *American Farm Economic Association*  
John H. Williams, *American Economic Association*  
Harold F. Williamson, *Economic History Association*

## RESEARCH STAFF

Solomon Fabricant, <i>Director of Research</i>	
Goffrey H. Moore, <i>Associate Director of Research</i>	
Moses Abramovitz	John W. Kendrick
Harold Barger	Simon Kuznets
Morris A. Copeland	Clarence D. Long
David Durand	Ruth P. Mack
Milton Friedman	Ilse Mintz
Raymond W. Goldsmith	G. Warren Nutter
Millard Hastay	Raymond J. Saulnier
W. Braddock Hickman	Lawrence H. Seltzer
Daniel M. Holland	George J. Stigler
Thor Hultgren	Leo Wolman

Herbert B. Woolley



RELATION OF NATIONAL BUREAU DIRECTORS TO  
PUBLICATIONS REPORTING CONFERENCE PROCEEDINGS

Since the present volume is a record of conference proceedings, it has been exempted from the rules governing submission of manuscripts to, and critical review by, the Board of Directors of the National Bureau. It has, however, been reviewed and accepted for publication by the Director of Research.

*(Resolution adopted July 6, 1948  
and revised November 21, 1949)*

UNIVERSITIES-NATIONAL BUREAU COMMITTEE FOR  
ECONOMIC RESEARCH

This Committee is a cooperative venture of universities and the National Bureau. Its guiding objective is the encouragement of economic research on problems susceptible of objective treatment and of sufficiently broad scope to merit attention by institutions serving a scientific and public interest.

George J. Stigler, Chairman  
*Columbia University*

Gardner Ackley, Vice-Chairman  
*University of Michigan*

Moses Abramovitz, *Stanford University*

M. A. Adelman, *Massachusetts Institute of Technology*

V Lewis Bassie, *University of Illinois*

Francis M. Boddy, *University of Minnesota*

Raymond T. Bowman, *University of Pennsylvania*

John B. Condliffe, *University of California*

James S. Earley, *University of Wisconsin*

G. Heberton Evans, Jr., *The Johns Hopkins University*

Solomon Fabricant, *National Bureau of Economic Research*

Milton S. Heath, *University of North Carolina*

Richard B. Heflebower, *Northwestern University*

Edgar M. Hoover, *Washington, D.C.*

Elizabeth E. Hoyt, *Iowa State College of Agriculture and Mechanic Arts*

A. D. H. Kaplan, *The Brookings Institution*

Dexter M. Keezer, *McGraw-Hill Publishing Company*

M. Slade Kendrick, *Cornell University*

H. Gregg Lewis, *University of Chicago*

Adolph Lowe, *New School for Social Research*

D. C. MacGregor, *University of Toronto*

Donald Marsh, *McGill University*

Oskar Morgenstern, *Princeton University*

Eastin Nelson, *University of Texas*

William H. Nicholls, *Vanderbilt University*

Richard Ruggles, *Yale University*

Arthur Smithies, *Harvard University*

Harold M. Somers, *University of Buffalo*

Joseph J. Spengler, *Duke University*

Emanuel Stein, *New York University*

M. C. Urquhart, *Queen's University*

Rutledge Vining, *University of Virginia*



## CONTENTS

Introduction, by Herbert Stein	3
<b>TYPES OF DEPRESSIONS AND PROGRAMS TO COMBAT THEM</b>	<b>7</b>
R. A. Gordon	
C O M M E N T	
Elmer C. Bratt	22
Maurice W. Lee	23
<b>A CASE STUDY: THE 1948-1949 RECESSION</b>	<b>27</b>
Benjamin Caplan	
C O M M E N T	
Martin Bronfenbrenner	53
Wesley Lindow	57
<b>STRUCTURE AND STABILITY: THE ECONOMICS OF THE NEXT ADJUSTMENT</b>	<b>59</b>
K. E. Boulding	
C O M M E N T	
Gerhard Colm	74
<b>THE STABILIZING EFFECTIVENESS OF BUDGET FLEXIBILITY</b>	<b>77</b>
David W. Lusher	
C O M M E N T	
Samuel M. Cohn	90
Benjamin Caplan	100
Gerhard Colm	104
A. G. Hart	106
Melvin I. White	111
C. Harry Kahn	114
Daniel M. Holland	115
Charles L. Schultze	117
Reply by Holland	119
<b>YIELD OF THE INDIVIDUAL INCOME TAX DURING A RECESSION</b>	<b>123</b>
Joseph A. Pechman	
C O M M E N T	
Paul J. Strayer	145

## CONTENTS

THE CORPORATE INCOME TAX IN A DEPRESSION	149
Richard Goode	
COMMENT	
Richard A. Musgrave	170
STABILIZING STATE AND LOCAL FINANCE	175
Clarence Heer	
COMMENT	
C. Harry Kahn	191
Melvin I. White	196
SOCIAL SECURITY PROGRAMS AND ECONOMIC STABILITY	205
Ida C. Merriam	
THE ROLE OF MONETARY POLICY IN COMBATING DEPRESSION	237
Summary of a paper by Robert V. Roosa	
HOUSING POLICIES TO COMBAT DEPRESSION	241
Leo Grebler	
COMMENT	
David M. Blank	255
SELF-LIQUIDATING PUBLIC WORKS TO COMBAT DEPRESSION	257
Wilfred Owen	
COMMENT	
Sidney G. Tickton	290
Wesley Lindow	293
THE CONTRIBUTION OF FARM PRICE SUPPORT PROGRAMS TO GENERAL ECONOMIC STABILITY	295
Karl A. Fox	
COMMENT	
James T. Bonnen	349
Reply by Fox	354
STABILIZATION OF INTERNATIONAL COMMODITY PRICES	357
D. Gale Johnson	
COMMENT	
Wilfred Malenbaum	370
INTERNATIONAL CURRENCY AND RESERVE PLANS	377
Robert Triffin	
COMMENT	
William A. Salant	404
INDEX	413