

This PDF is a selection from an out-of-print volume from the National Bureau of Economic Research

Volume Title: Income from Independent Professional Practice

Volume Author/Editor: Friedman, Milton and Simon Kuznets

Volume Publisher: NBER

Volume ISBN: 0-87014-044-2

Volume URL: <http://www.nber.org/books/frie54-1>

Publication Date: 1954

Chapter Title: Indexes

Chapter Author: Milton Friedman, Simon Kuznets

Chapter URL: <http://www.nber.org/chapters/c2336>

Chapter pages in book: (p. 581 - 600)

	PHYSICIANS (1)	DENTISTS (2)	LAWYERS (3)	CERTIFIED PUBLIC ACCOUNTANTS (4)	CONSULTING ENGINEERS (5)	ALL PERSONS, EARNERS, OR NON- RELIEF FAMILIES (6)
ADMISSIONS TO						
Profession	2		3			
Professional schools						
ARITHMETIC MEAN						
U. S.						
Final estimates	11, B3	11, B5	B8	11, B10		
Avg. for period	7, 11, 16, 17, 18, 29	7, 11, 16, 17, 18, 29	16, 17, 18	7, 11, 16, 17, 18		
Standardized with respect to						
Region	18	18	18	18		
Size of community	17, 29	17, 29	17	17		
Original estimates	16, B1, B2	16, B4	16, B6, B7	16, B9	10, B11	8, 17, 18
Avg. for period					10, 17, 18	7
By type of practice						
Standardized with respect to	36, 37, 43					
Region						
Size of community						
Indices	64	64	64	64	18	
By organization or type of practice	36, 37, B1C				17	
By size of community	34	36	47, B6c	47, B9c	64	64
Avg. for period	45					
By years in practice	55, 34					
Indices	67					
Standardized with respect to size						
of community	44		68	68	68	
By regions						
Final estimates	B3		B8			
Avg. for period	18, 29		18			
Standardized with respect to size						
of community	29					
Original estimates	B1a, B2	B4a	B6a, B7	B9a	B11a	18
Avg. for period					18	
By size of community	25					
Percentage change	66	66	66	66		66

TABULAR INDEX (Cont.)

	PHYSICIANS (1)	DENTISTS (2)	LAWYERS (3)	CERTIFIED PUBLIC ACCOUNTANTS (4)	CONSULTING ENGINEERS (5)	ALL PERSONS, EARNERS, OR NON- RELIEF FAMILIES (6)
<i>By size of community classes</i>						
Final estimates	B 3	B 5	B 8	B 10		
Avg. for period	16, 17	16, 17	16, 17	16, 17		
Original estimates	B 1b, B 2	B 4b	B 6b, B 7	B 11b	17	
Avg. for period				16, 17		
By regions	25					
By type of practice	34					
Avg. for period	43					
By years in practice	34					
Percentage change	65	65	65	65		
<i>By years in practice</i>	32	32	32			
By size of community	34					
By type of practice	35, 34					
<b>COEFFICIENT OF VARIATION</b>						
U. S.	15, 59, B 1	15, B 4	15, 49, B 6	15, 49, B 9	15, 49, B 11	
Avg. for period	B 12	B 12	B 12	B 12	B 12	
Standardized with respect to						
Region	22	22	22	22	22	22
Size of community	21	21	21	21	21	21
<i>By organization or type of practice</i>						
By regions	39, B 1c	40	49, B 6c	49, B 9c	49, B 11c	
Avg. for period	B 1a	B 4a	B 6a	B 9a	B 11a	
By size of community classes	22, B 12a	22, B 12a	22, B 12a	22, B 12a	22, B 12a	
Avg. for period	B 1b	B 4b	B 6b	B 9b	B 11b	21
By type of practice	21, B 12b	21, B 12b	21, B 12b	21, B 12b	21, B 12b	
<b>CORRELATION ANALYSIS</b>						
Analysis of variance ratio	59	59	59	59		
Constants of regression equations	60	60	60	60	60	
Correlation coefficients	56	56	56	56	56	
Correlation table		55				
Rank difference correlation coefficients	20	20	20	20	20	20

DISTRIBUTION OF INCOME			
U. S.	B 1a	B 4a	B 11a
By organization or type of practice	B 1c		B 11c
By regions	B 1a	B 4a	B 11a
By scholastic rating			
By size of community classes	B 1b	B 4b	B 11b
DISTRIBUTION OF PRACTITIONERS			
By organization or type of practice	41, 42		
By age, by size of community	35		
By regions	41		
By size of community	41, 42		
By years in practice	45		
By years in practice	33		
INTERQUARTILE DIFFERENCE			
U. S.	13, 39, B 1	13, B 4	13, 49, B 11
By organization or type of practice	39, B 1c	40	49, B 11c
By regions	B 1a	B 4a	B 11a
By size of community classes	B 1b	B 4b	B 11b
MEDIAN			
U. S.	10, 12, 38, B 1	10, 12, B 4	10, 12, 48, B 11
By organization or type of practice	38, B 1c	40	48, B 11c
By regions	B 1a	B 4a	B 11a
By size of community classes	B 1b	B 4b	B 11b
By type of school attended			
By years in practice	32	32	30
METHOD OF SELECTING SAMPLES			
NUMBER OF PERSONS	4	4	4
U. S.			
Covered by			
Correlation analysis	56	56	56
Samples	4, 10, B 1, B 2	4, 10, B 4	4, 10, B 11
In profession	1	1	1
By organization or type of practice	37, B 1c		46, B 11c
By size of community	34, 45	46, B 6c	46, B 9c
By years in practice	33, 34		53

TABULAR INDEX (Cont.)

	PHYSICIANS (1)	DENTISTS (2)	LAWYERS (3)	CERTIFIED PUBLIC ACCOUNTANTS (4)	CONSULTING ENGINEERS (5)	ALL PERSONS, EARNERS, OR NON- RELIEF FAMILIES (6)
<i>By regions</i>	B 1a, B 2	B 4a	B 6a, B 7	B 9a	B 11a	
<i>By size of community classes</i>	25	B 4b	B 6b, B 7	B 9b	B 11b	
<i>By regions</i>	B 1b, B 2					
<i>By type of practice</i>	25					
<i>By years in practice</i>	34, 43, B 1c					
<i>By years in practice</i>	34					
<i>By organization or type of practice</i>	35					
<i>By size of community</i>	34					
QUARTILES						
U. S.	12, 38, B 1	12, B 4	12, 48, B 6	12, 48, B 9	12, 48, B 11	
<i>By organization or type of practice</i>	38, B 1c	40	48, B 6c	48, B 9c	48, B 11c	
<i>By regions</i>	B 1a	B 4a	B 6a	B 9a	B 11a	
<i>By size of community classes</i>	B 1b	B 4b	B 6b	B 9b	B 11b	
RATIO OF QUARTILES						
U. S.	13	13	13	13	13	
<i>By organization or type of practice</i>	39	49	49	49	49	
RELATIVE INTERQUARTILE DIFFERENCE						
U. S.	15, 39, B 1	15, B 4	15, 49, B 6	15, 49, B 9	15, 49, B 11	
<i>Avg. for period</i>	B 12	B 12	B 12	B 12	B 12	
Standardized with respect to						
Region	22	22	22	22	22	22
Size of community	21	21	21	21	21	21
<i>By organization or type of practice</i>	39, B 1c	40	49, B 6c	49, B 9c	49, B 11c	
<i>By regions</i>	B 1a	B 4a	B 6a	B 9a	B 11a	
<i>Avg. for period</i>	22, B 12a	22, B 12a	22, B 12a	22, B 12a	22, B 12a	
<i>By size of community classes</i>	B 1b	B 4b	B 6b	B 9b	B 11b	
<i>Avg. for period</i>	21, B 12b	21, B 12b	21, B 12b	21, B 12b	21, B 12b	
STANDARD DEVIATION						
U. S.	15, 39, B 1	15, B 4	15, 49, B 6	15, 49, B 9	15, 49, B 11	
<i>By organization or type of practice</i>	39, B 1c	40	49, B 6c	49, B 9c	49, B 11c	
<i>By regions</i>	B 1a	B 4a	B 6a	B 9a	B 11a	
<i>By size of community classes</i>	B 1b	B 4b	B 6b	B 9b	B 11b	

# Author Index

- Adams, B. L., 36  
Arant, H. W., 36
- Baker, K. L., 41  
Bevan, A. D., 12  
Bierring, W. L., 12  
Byrnes, T. W., 41
- Capen, S. P., 13  
Carson, Daniel, 68, 366  
Clark, C. E., 34  
Clark, H. F., 86, 145, 146, 149, 150, 151, 412
- Davis, H. T., 67  
Dodd, P. A., 164, 472, 473  
Douglas, W. O., 34  
Dunbar, C. E., Jr., 34
- Eden, T., 346  
Edwards, A. M., 3, 82
- Fisher, A. G. B., 91  
Fisher, R. A., 339, 350  
Flexner, Abraham, 9  
Fraser, Andrew, Jr., 45, 486, 487  
Friedman, Milton, 115, 223, 227, 452
- Garrison, L. K., 31, 38, 60, 237, 241, 483, 484  
Gibrat, R., 67  
Gies, W. J., 9, 21, 24
- Harno, A. J., 34  
Harriss, C. L., 131  
Hinrichs, A. F., 486  
Horack, H. C., 34  
Hotelling, Harold, 331
- Isaacs, Marvin, 40
- King, W. I., 67, 79  
Kinnane, C. H., 35  
Kirkwood, M. R., 35
- Knauth, O. W., 67, 79  
Kneeland, Hildegard, 73  
Knibbs, G. H., 78  
Kuznets, Simon, 3, 68, 76, 366
- Lasken, Herman, 168, 418  
Leland, R. G., 8, 11, 144, 145, 162, 231, 232, 257, 259, 263, 267, 270, 271, 273, 274, 275, 420, 422, 424, 449, 453, 455, 475  
Leven, Maurice, 5, 21, 122, 138, 140, 146, 147, 186, 228, 241, 246, 264, 265, 267, 269, 299, 416, 417, 420, 442, 443, 461, 462, 463, 466, 469, 473  
Lewis, S. R., 23  
Lorenz, M. O., 73  
Lyon, E. P., 12
- Macaulay, F. R., 66, 67, 79  
Marshall, Alfred, 89, 90, 97, 129  
Martin, J. L., 162, 191, 381  
Mill, J. S., 92  
Miller, J. A., 12  
Mitchell, Wesley C., 67, 79, 141  
Molitor, F. A., 44  
Moore, G. H., 349  
Myers, B. D., 15
- Nathan, R. R., 162, 191, 381  
Nissley, W. W., 42  
Noyes, C. R., 181
- Pareto, Vilfredo, 66  
Pearson, E. S., 346  
Penrose, E. F., 164, 472, 473  
Phillips, O. J., 35  
Pinkham, C. B., 12, 18
- Reed, A. Z., 31, 33, 34, 36  
Rogers, J. G., 32, 35  
Rypins, Harold, 12, 18
- Secrist, Howard, 331  
Shafroth, Will, 38

Shea, F. M., 37  
Slifer, Walter, 47  
Smith, Adam, 83, 129  
Smith, Y. B., 35

Teiser, Sidney, 35  
Thomas, R. P., 6, 26, 164, 168, 449, 453,  
483  
Timmons, G. D., 23

Wallbank, S. T., 35  
Wallis, W. A., 349

## AUTHOR INDEX

Walsh, J. R., 84, 85, 86, 87, 90, 91, 92  
Walters, Raymond, 12  
Weiskotten, H. C., 264, 278  
Wickser, P. J., 35  
Wilbur, R. L., 9, 12  
Wormser, I. M., 35

Yates, F., 339, 346  
Yntema, D. B., 66

Zappfe, F. C., 14

# Subject Index

- Accountancy
  - Examination, percentage passing, 41
  - Salaried practice predominant, 296
- Accountants
  - Admitted to practice, 42
  - As salaried employees, 120, 262, 295-7
  - Distinction between certified and noncertified, 40
  - Distribution by organization of practice, 39
  - Function of, 39-40
  - Number of, 119
    - Adjusted for overrepresentation of firm members, 56
    - Reporting income, 281
  - Percentage of
    - In firms, 260
    - In salaried positions, 39
  - Training requirements, 40-1, 42
  - see also* Tabular index
- Accountants, firm members
  - Coefficient of variation, 289
- Income of
  - By size of community, 293
  - Compared with individual practitioners, 282
  - Temporal change in, 389-90
- Number reporting income, adjusted for bias, 281
- Percentage of, 281, 282
- Accountants, income of
  - Adjusted for overrepresentation of firm members, 56, 435-8
  - Level, 99-100, 102-3
  - Regional differences, 225
  - Size of community differences, 225
  - Variability, 111-5, 116-8, 139-40, 141
  - see also* Income, temporal change in; Tabular index
- Accountants, individual practitioners
  - Coefficient of variation, 289
  - Income of
    - By size of community, 282, 293
    - Temporal change in, 389
- Admissions, *see* Tabular index
- Age at death
  - Nonprofessional workers, 149
  - Professional workers, 149
- Analysis of variance ratio
  - Affect of nonnormality on, 346-9
  - Affect of unequal variance on, 341-6
  - Test of linearity of regression, 338-9
- Arithmetic mean
  - Use in supply curve, 157
  - see also* Tabular index
- Australia, distribution of income in, 78
- Bar examination, percentage passing, 37-9
- Biases in samples
  - Distribution of firm incomes, 107, 289
  - Inclusion of salaried employees, 52, 414-5
  - Misinterpretation by respondents, 53, 445-6
- Nonrandomness by states
  - Lawyers, 55, 419, 21
  - Physicians, 53, 419-21
- Overrepresentation
  - Firm members, 55-6, 430-8
  - Prominent practitioners, 56, 429-30
  - Specialists, 54, 429-30
- Possible sources of, 50, 411-2
- Refusal ratio, 439-45
- Selection of usable questionnaires, 446-8
- Trend in income, 51-2
- Underrepresentation
  - Dentists, nonmembers, 54, 415-9
  - Engineers with low incomes, 57
  - Lawyers in large communities, 55, 425-9
  - Physicians in small communities, 53, 421-5



- California dentists, income of, 475-7
- California lawyers, percentage firm members, 294
- California physicians, income of, 472-5  
 By type of practice, 246, 264-5  
 By years in practice, 246
- Certified public accountants  
 Number, 119  
*see* Accountants
- Citizenship required for professional practice  
 Dentistry, 23  
 Medicine, 18, 19
- Clark's estimates  
 Discounted value of earnings, 86  
 Present value of earnings, 87
- Coefficient of correlation, *see* Correlation coefficient
- Coefficient of variation  
 Corrected for bias in firm incomes, 289  
 Defined, 66  
 Regional differences in  
 Compared with size of community differences, 215-9  
 Relation to income, 322-5  
 Size of community differences in  
 Compared with regional differences, 215-9  
 Compared with relative interquartile difference, 213-9  
 Professions, 206-7, 212  
 Public, 206, 212  
*see also* Tabular index
- Committee on Costs of Medical Care  
 Income of dentists, 467-72  
 Income of physicians, 228, 264-5, 461-7
- Competition, effect on income, 138-9, 256
- Complete specialists  
 Compared with general practitioners, 269  
 Concentration of  
 In large communities, 268  
 In young age groups, 276-7  
 In California, 475  
 Income of  
 Average, 264  
 By size of community, 273  
 Compared with general practitioners, 274, 279  
 Compared with partial specialists, 264, 274, 279  
 Standardized with respect to years in practice and size of community, 277  
 Percentage of, 263  
 By size of community, 269-71  
 By years in practice, 271, 276  
 In California, 267  
 Regional differences in income eliminated, 273-4  
 Size of community differences in income eliminated, 273-6  
 Variability of income, 267-8  
*see also* Physicians, by type of practice
- Consulting engineers  
 Functions, 43-4  
 Number, 119  
*see* Engineers
- Consumer, type of  
 As determinant of proportion in salaried practice, 3-4, 295  
 Effect on stability of professional income, 304  
 In small communities, 292  
 Served by  
 Business professions, 261-2  
 Curative professions, 260
- Correction factor applied to dental incomes  
 Alternative ratios, 153, 418  
 Selection of, 415-9
- Correlation analysis, *see* Tabular index
- Correlation coefficient  
 Compared with partial correlation coefficient, 308-9  
 Consecutive and nonconsecutive years, 307-8  
 Measure of stability of relative income status, 301-9  
 Professions compared, 303  
 Statistical significance, 303-4  
 Unweighted and weighted, 318
- Costs  
 Dental training, 143-4  
 Medical training, 143-5  
 Professional training, 84-7, 91-2, 149

## Demand

- Dentistry, 164-72
- Medicine, 161-3
- Professional services, 132-4, 155-73

## Dental course, length of, 22, 23

## Dental schools

- Admissions to, 22
- Number, 22

## Dental students, number of, 24

## Dental training

- Development in, 21
- Length of; effect on income, 125-6
- Requirements for licensure, 23

## Dentistry

- Group practice of, 261
- Length of working life in, 143

## Dentists

## By type of practice

- Distribution, 21, 146, 263
- Incomes compared, 264

## Length of working life, 146

## Members of A.D.A.

- Percentage by regions, 228
- Percentage of all dentists, 54, 415-7

## Number of, in relation to physicians, 29-30, 133, 234-5

## Percentage general practitioners, 146

## Restriction of samples to members of A.D.A.

- Correction of mean income, 54-5, 103, 153, 416-8
- Effect on frequency distribution, 418-9
- Effect on median, 106-7
- Effect on quartiles, 106-7

## Salaried, 262

- Percentage of, 120, 260

*see also* Tabular index

## Dentists and physicians compared, 29-30, 111-2, 118-37, 142-8, 154, 229-35

## Dentists, income of

- Adjusted to include nonmembers of A.D.A., 54-5, 103, 416-8
- Affected by geographic location, 123
- Affected by years in practice, 123
- Average for last three years of practice, 146
- By year of graduation, 122
- By years in practice, 240
- In California, 475-7
- In Minnesota, 481-3

- In relation to physicians, 111-2, 118-37, 142-8, 154, 229-35
- Level of, 99-100, 102, 103

## Median, 111

## Members of A.D.A. compared with nonmembers, 54, 415-7

## Present value of, 143, 145

## Regional differences in, 232, 233-4

## Reliability of data tested, 467-72, 475-7, 481-3

Variability, 111-5, 116-8, 139, 140  
*see also* Income, temporal change in; Tabular indexDistribution of income, *see* Tabular indexDistribution of practitioners, *see* Tabular indexEarnings, discounted value of, *see* Clark's estimatesEarnings, present value of, *see* Walsh's estimates

## Engineering, salaried practice in, 296

## Engineers

## As salaried employees, 262

## Number of, 57, 119

## Percentage in firms, 260

## Training received, 44-5

*see also* Tabular index

## Engineers, firm members

## Coefficient of variation, 289

## Income of, 283, 294

## Temporal change, 389-90

## Engineers, income of

## Affected by fluctuations in construction, 368

## Level of, 102, 103

## Regional differences, 225

## Reliability of data tested, 486-8

## Size of community differences, 225

Variability, 111-5, 116-8, 139-40, 141  
*see also* Income, temporal change in; Tabular index

## Engineers, individual practitioners

## Coefficient of variation, 289

## Income of, 283, 294

## Temporal change in, 389-90

## Equilibrium difference, 126, 131, 132-5

## Measured by supply and demand curves, 159-60

## Equipment

## Cost of, 145

## Sharing of, 261

- Family income  
 Compared with individual income, 76-8  
*see also* National Resources Committee estimates
- Final estimates, 103  
*see also* Tabular index
- Firm members  
 Concentration in large communities, 280  
 Distribution  
   By region, 290  
   By size of community, 290  
 Income of, 282, 290-1  
 Percentage of, 281-2  
   By years in practice, 294  
   Decrease in, 282  
 Regional differences, 290-1  
 Relative income status, 280-1  
 Size of community differences, 290-1  
 Specialization among, 279-81  
 Variability of income, 289  
*see also* Accountants, firm members; Engineers, firm members; Lawyers, firm members
- First quartile, 66  
*see also* Tabular index
- Foreign schools, requirements for medical graduates, 18
- Foreign medical students, *see* Medical Students, foreign
- Gainfully occupied, income of, 368
- General practitioners  
 Compared with complete specialists, 269  
 Income of  
   Average, 264  
   By size of community, 273  
   Compared with complete specialists, 274, 279  
   Compared with partial specialists, 264, 274, 279  
   Standardized, 277  
 Percentage of, 263  
   By size of community, 269-71  
   By years in practice, 276  
 Regional differences in income, 273-4  
 Size of community differences in income, 273-6  
 Variability of income, 267-8  
*see also* Physicians, by type of practice
- Group practice of medicine, 261
- Health insurance, 261
- Hospitalization, 261
- Income, components of, 327, 328, 352, 353  
 Income, distribution of, *see* Distribution of income  
 Income, temporal change in  
   By organization of practice, 387-90  
   By region, 379-84  
   By size of community, 373-9  
   By type of practice, 384-6  
   Contrasted with demand, 368  
   Determinants of, 365  
   Pattern of, 365-8  
   Professions and all gainfully occupied compared, 368  
   Professions compared, 368-9
- Independent practice  
 Compared with salaried practice, 3, 296  
 Number in, 3
- Individual practitioners  
 Income in small communities, 290-1  
 Regional differences, 290-1  
 Size of community differences, 290-1  
 Variability of income, 289  
*see also* Accountants, individual practitioners; Engineers, individual practitioners; Lawyers, individual practitioners
- Interest rate in computing present values, 147, 151
- Internship required, 10  
 Foreign students, 18
- Interquartile difference  
 Defined, 66  
*see also* Tabular index
- Law  
 Course, length of, 33  
 Limitations to admission to practice, 35-7  
 Schools, number of, 32, 35  
 Students, number of, 35
- Lawyers  
 As salaried employees, 262  
 Distribution by organization of practice, 31

Lawyers, *Continued*

- Number of, 34
  - Adjusted for biases, 55, 56
  - Percentage in firms, 260
  - Training requirements, 31
  - see also* Tabular index
- Lawyers, firm members and individual practitioners compared
  - Coefficient of variation, 289
  - Income, 282-3
    - By size of community, 293-4
    - Temporal change in, 387-90
- Lawyers, income of
  - Adjusted for
    - Nonrandomness, 55, 419-21
    - Overrepresentation of firm members, 56, 430-35
    - Underrepresentation of large communities, 55, 425-9
  - Affected by
    - Extent of education, 236
    - Law school grades, 237
    - Type of school attended, 236
  - By years in practice, 243, 294-5
  - In New York County, 484-6
  - In Wisconsin, 483-4
  - Level of, 99-100, 102-3
  - Regional differences, 225
  - Reliability of data tested, 483-6
  - Variability of, 111-5, 116-8
  - see also* Income, temporal change in; Tabular index
  - Length of training, 4, 10-11, 22-3, 34, 40-1, 44, 83, 149
    - Effect on choice of profession, 83, 125-7
  - Length of working life, 149-50
  - Level of income, relative position of professions, 99-100
  - Limitation of entry, medical schools, 11-5, 135-7
  - Logarithmic normal curve, 67
  - Lorenz curve, 72-3
  - Mean income
    - Professions compared, 99
    - see also* Tabular index
  - Median
    - Defined, 66
    - Professions compared, 100
    - see also* Tabular index
  - Medical course, length of, 9

## Medical schools

- Applications to, 14
- Limitation of entry into, 11-5, 135-7
- Number of, 9
- Requirements for admission to, 9
- Requirements for degree, 10
- Medical license, examination for
  - Percentage failing, 19-20
  - Requirements for admission to, 17-8
- Medical students
  - Foreign, requirements imposed on, 18-20
  - Number of, 9
  - Number studying abroad, 17
  - Premedical training, 10-11
- Medical training
  - Length of, 10-11
    - Effect on income, 125-6
  - Required for license, 10
- Medicine, group practice of, 261
- Michigan physicians, 479-80
- Minnesota dentists, 481-3
- Mobility in the professions, 175-8, 188-9, 196-7
- National Resources Committee estimates
  - Average income, 69
  - Compared with
    - D.O.C. samples, 76
    - NBER estimates, 78-80
  - Family and individual incomes compared, 76-8
  - Groups covered, 68
  - Income differences among communities, 81, 183-9
  - Shortcomings in, 69-71, 75-6, 80, 81
  - Variability of income, 71-2
  - see also* Nonrelief families
- Net income from independent practice, defined, 50
- New York County lawyers, 239, 241, 484-6
- Nonpecuniary factors affecting choice of profession, 130-2
- Nonrelief families
  - Distribution by size of community, 183
  - Income of, compared with professions, 68-80, 183-9
  - see also* Tabular index
- Number in independent practice, 3, 4
  - see also* Tabular index

- Organization of practice, *see* Lawyers, Accountants, and Engineers, firm members and individual practitioners; Tabular index
- Pareto Law, 66-7
- Partial correlation coefficient  
 Compared with correlation coefficient, 308-9  
 Professions compared, 308
- Partial specialists  
 Income of  
 Average, 264  
 By size of community, 273  
 Compared with complete specialists, 264, 274, 279  
 Compared with general practitioners, 264, 274, 279  
 Standardized, 277  
 Percentage of, 263, 276  
 Regional and size of community differences in income eliminated, 273-6  
 Variability of income, 267-8  
*see also* Physicians, by type of practice
- Per capita, *see* Public; Tabular index
- Permanent component  
 Defined, 325  
 Discussed and measured, 326-38
- Physicians  
 Age, by size of community, 256-8  
 As salaried employees, 262  
 Competition in small communities, 256  
 Concentration in large communities, 256-8  
 Length of working life, 146  
 Number of  
 Adjusted for nonrandomness, 53-4, 419-21  
 In relation to dentists, 29-30, 133, 234-5  
 In relation to total population, 11  
 Percentage in salaried practice, 120, 260  
 Training requirements, *see* Medical training  
 Young, 256-9  
*see also* Tabular index
- Physicians and dentists compared, 29-30, 111-2, 118-37, 142-8, 154, 229-35
- Physicians, by type of practice  
 By years in practice, 276-8  
 In California, 472-5  
 Income of, 264  
 Affected by size of community, 274  
 By size of community, 247-55  
 By years in practice, 245, 246-55  
 Committee on Costs of Medical Care, 264-5  
 In California, 246, 264-5  
 Standardized, 277  
 Temporal change, 384-6  
 Percentage distribution, 8, 263, 475  
*see also* Complete specialists; General practitioners; Partial specialists; Tabular index
- Physicians, by years in practice  
 By type of practice, 276-8  
 Complete specialists, by size of community, 271  
 Distribution, 123, 243  
 Income, 240, 277  
*see also* Tabular index
- Physicians, income of  
 Adjusted for nonrandomness of samples, 53-4, 419-21  
 Affected by  
 Geographic location, 123  
 Training, 278-9  
 Years in practice, 123  
 By size of community, 273  
 By type of practice, 262-79  
 By years in practice, 237-60  
 In California, 246, 264-5, 472-5  
 In Michigan, 479-80  
 In relation to dentists, 111-2, 118-37, 142-8, 154, 229-35  
 In Wisconsin, 478-9  
 In Utah, 480-1  
 Level of, 99-100, 102-3  
 'Life cycle,' 246  
 Median, 111  
 Regional differences, 223-4, 233  
 Committee on Costs of Medical Care, 228  
 Relation between gross and net, 267  
 Reliability of date tested, 461-7, 472-5, 477-81  
 Size of community differences, 187-8, 223-4, 259-60  
 Variability of, 111-5, 116-8, 139, 140  
*see also* Income, Temporal change in; Tabular index

- Population shift, effect on medical income, 259
- Professional career, development of, 237-40
- Professional income  
 Compared with nonprofessional, 67-8, 71-5, 81, 82, 83-4, 87-8, 93-4, 180-9, 197-9  
 Compensation for added expense, 83  
 Nonpecuniary factors affecting, 88  
 Present value, 149  
 Regional differences, 188-99, 232  
 Size of community differences, 180-9  
*see also* income entries for various professions
- Professional training  
 Cost of, 84-7, 91-2, 149  
 Investment in, 89-90  
 Length of, 83
- Professional workers, number of, 82
- Professions  
 Choice of, 92-3, 95-7  
 Definition of, 3  
 Entry into, limited, 88-9, 97-9  
 Number in, 46  
 Training requirements, 4
- Public, income of  
 Compared with professions, 183-99  
 Regional differences, 189-99  
 Size of community differences, 183-9  
*see also* National Resources Committee estimates
- Quartiles, *see* First quartile; Third quartile; Tabular index
- Quasi-permanent factor  
 Defined, 352, 353  
 Interpreted, 355-64
- Ratio of quartiles, *see* Tabular index
- Regional differences in income  
 Dentists, 232  
 Physicians, 232  
 Physicians and dentists compared, 234  
 Ranks used in measuring, 222  
*see also* Tabular index
- Regions  
 Income by, *see* Tabular index  
 Size of community composition, 229  
 States included, 179
- Regression analysis, 309-33  
*see also* Analysis of variance
- Relative interquartile difference  
 Compared with coefficient of variation, 213-9  
 Regional differences, 215, 218  
 Size of community differences, 212-3, 213-9  
*see also* Tabular index
- Reliability of data tested, 448-88
- Samples compared with one another, 455-61
- Samples compared with other studies, 461-88  
 Dentists, 467-72, 475-7, 481-3  
 Engineers, 486-8  
 Lawyers, 483-6  
 Physicians, 461-7, 472-5, 477-81
- Samples compared with universe, 448-55
- Salaried practice  
 As step toward independent practice, 296  
 Compared with independent practice, 3, 296  
 Predominant in accountancy and engineering, 296  
 Variability of income, 297-8
- Samples  
 Biases in, *see* Biases in samples  
 Collection of, 47, 50, 411-2; *see also* Tabular index  
 Coverage of, 47  
 Information obtained from, 49-50  
 Reliability of, 57-62
- Services rendered  
 Affecting type of specialization, 260-2  
 By physicians and dentists, 261  
 Volume of, 368
- Size of community classes, 179  
 Regional composition, 229  
 Income by, *see* Tabular index
- Size of community differences in income  
 Physicians, 273  
 Ranks used in measuring, 222  
*see also* Tabular index
- Sliding scale, 138
- Specialists, certification of, 279
- Specialists, complete, *see* Complete specialists
- Specialists, partial, *see* Partial specialists

- Specialization, development of, 260, 263-4
- Stability of relative income status, *see* Correlation coefficient
- Standard deviation, 66, 319-22; *see also* Tabular index
- Standard error of difference between medical and dental incomes, 152
- Standardized averages, 229-32
- Ineffective as precise measures, 233
- Physicians by type of practice, 273-6, 277  
*see also* Tabular index
- Supply
- Dentistry, 164-72
- Medicine, 161-3
- Professional services, 155-73
- Third quartile, 66  
*see also* Tabular index
- Training
- Cost of, 84-7, 91-2, 143-5, 149
- Effect on physicians' incomes, 278-9
- Requirements, 4, 10
- Transitory component
- Defined, 325
- Discussed and measured, 326-38
- Fallacy in application, 331-2
- In linear regressions, 332-3
- In nonlinear regressions, 334-5
- Interpretation of, 326-7
- Measurement of, 327-31
- Professions compared, 332-8
- Type of practice, *see* Physicians by type of practice; Dentists by type of practice
- Utah physicians, 480-1
- Variability, absolute, 66
- Variability of income
- Accountants and engineers compared, 139-10, 141
- Annual, 105-15
- Effect on choice of profession, 127-30
- For long periods, 115-8
- Medicine and dentistry compared, 139, 140
- Professions
- Compared with public, 80, 203
- Regional differences, 203
- Relative position, 111
- Size of community differences, 203
- Public, 203
- Regression analysis, 319-25
- Relation to income level, 372
- Temporal change in, 369-71, 372  
*see also* Coefficient of variation; Interquartile difference; Ratio of quartiles; Relative interquartile difference; Standard deviation
- Walsh's estimates
- Cost of training, 84-7
- Present value of earnings, 84-7
- Procedure compared with NBER, 86-7
- Shortcomings in, 86-7
- Weights used for standardized averages, 229-32
- Wisconsin lawyers, 239, 241, 483-4
- Wisconsin physicians, 478-9
- Years in practice, effect on income level, 309

## SOME NATIONAL BUREAU PUBLICATIONS

### PROSPECTIVE AND RECENT BOOKS

<i>Personal Income during Business Cycles</i> Daniel Creamer	(in press)
<i>Mortgage Lending Experience in Agriculture</i> Lawrence A. Jones and David Durand	(in press)
<i>Long-Range Economic Projection: Studies in Income and Wealth, Volume Sixteen</i> Conference on Research in Income and Wealth	(in press)
<i>Short-Term Economic Forecasting: Studies in Income and Wealth, Volume Seventeen</i> Conference on Research in Income and Wealth	(in press)
<i>Minimum Price Fixing in the Bituminous Coal Industry</i> Waldo Fisher and Charles M. James	(in press)
<i>Business Concentration and Price Policy</i> Universities-National Bureau Committee for Economic Research	(in press)
<i>The Frontiers of Economic Knowledge</i> (1954) Arthur F. Burns	410 pp., \$5.00
<i>Regularization of Business Investment</i> (1954) Universities-National Bureau Committee for Economic Research	512 pp., 8.00
<i>Shares of Upper Income Groups in Income and Savings</i> (1953) Simon Kuznets	768 pp., 9.00
<i>The Volume of Corporate Bond Financing since 1900</i> (1953) W. Braddock Hickman	464 pp., 7.50
<i>Wesley Clair Mitchell: The Economic Scientist</i> (1952) Arthur F. Burns (ed.)	398 pp., 4.00
<i>A Study of Moneyflows in the United States</i> (1952) Morris A. Copeland	620 pp., 7.50
<i>The Trend of Government Activity in the United States since 1900</i> (1952) Solomon Fabricant	288 pp., 4.00
<i>Federal Grants and the Business Cycle</i> (1952) James A. Maxwell	136 pp., 2.00
<i>Commercial Bank Activities in Urban Mortgage Financing</i> (1952) Carl F. Behrens	152 pp., 2.50
<i>Studies in Income and Wealth, Volume Fifteen</i> (1952) Conference on Research in Income and Wealth Eight papers on size distribution of income	240 pp., 3.50
<i>Conference on Research in Business Finance</i> (1952) Universities-National Bureau Committee for Economic Research	360 pp., 5.00

### ALL OCCASIONAL PAPERS IN PRINT AND IN PRESS

<i>3 Finished Commodities since 1879: Output and Its Composition</i> (1941) William H. Shaw	25
--	----

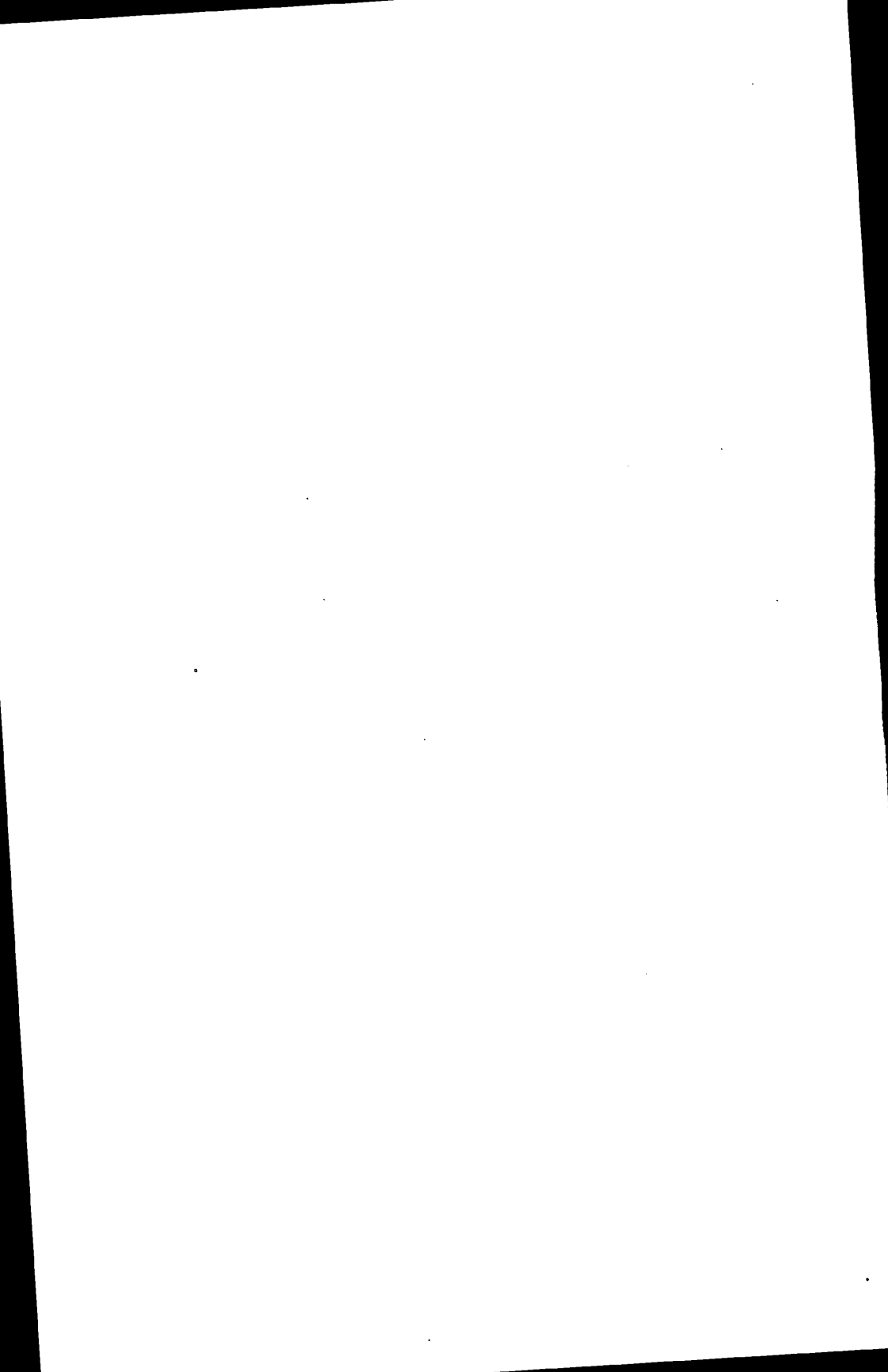


5	<i>Railway Freight Traffic in Prosperity and Depression</i> (1942) Thor Hultgren	\$ .25
10	<i>The Effect of War on Business Financing: Manufacturing and Trade, World War I</i> (1943) Charles H. Schmidt and Ralph A. Young	.50
11	<i>The Effect of War on Currency and Deposits</i> (1945) Charles R. Whittlesey	.35
12	<i>Prices in a War Economy: Some Aspects of the Present Price Structure of the United States</i> (1943) Frederick C. Mills	.50
13	<i>Railroad Travel and the State of Business</i> (1943) Thor Hultgren	.35
14	<i>The Labor Force in Wartime America</i> (1944) Clarence D. Long	.50
15	<i>Railway Traffic Expansion and Use of Resources in World War II</i> (1944) Thor Hultgren	.35
17	<i>National Product, War and Prewar</i> (1944) Simon Kuznets	.50
18	<i>Production of Industrial Materials in World Wars I and II</i> (1944) Geoffrey H. Moore	.50
19	<i>Canada's Financial System in War</i> (1944) Benjamin H. Higgins	.50
20	<i>Nazi War Financing and Banking</i> (1944) Otto Nathan	.50
22	<i>Bank Liquidity and the War</i> (1945) Charles R. Whittlesey	.50
23	<i>Labor Savings in American Industry, 1899-1939</i> (1945) Solomon Fabricant	.50
24	<i>Domestic Servants in the United States, 1900-1940</i> (1946) George J. Stigler	.50
25	<i>Recent Developments in Dominion-Provincial Fiscal Relations in Canada</i> (1948) J. A. Maxwell	.50
27	<i>The Structure of Postwar Prices</i> (1948) Frederick C. Mills	.75
28	<i>Lombard Street in War and Reconstruction</i> (1949) Benjamin H. Higgins	1.00
29	<i>The Rising Trend of Government Employment</i> (1949) Solomon Fabricant	.50
30	<i>Costs and Returns on Farm Mortgage Lending by Life Insurance Companies, 1945-1947</i> (1949) R. J. Saulnier	1.00
31	<i>Statistical Indicators of Cyclical Revivals and Recessions</i> (1950) Geoffrey H. Moore	1.50
32	<i>Cyclical Diversities in the Fortunes of Industrial Corporations</i> (1950) Thor Hultgren	.50
33	<i>Employment and Compensation in Education</i> (1950) George J. Stigler	1.00

34	<i>Behavior of Wage Rates during Business Cycles</i> (1950) Daniel Creamer	\$1.00
35	<i>Shares of Upper Income Groups in Income and Savings</i> (1950) Simon Kuznets	1.00
36	<i>The Labor Force in War and Transition: Four Countries</i> (1952) Clarence D. Long	1.00
37	<i>Trends and Cycles in Corporate Bond Financing</i> (1952) W. Braddock Hickman	.75
38	<i>Productivity and Economic Progress</i> (1952) Frederick C. Mills	.75
39	<i>The Role of Federal Credit Aids in Private Residential Construction</i> (1953) Leo Grebler	1.00
40	<i>Transport and the State of Trade in Britain</i> (1953) Thor Hultgren	1.50
41	<i>Capital and Output Trends in Manufacturing Industries, 1880-1948</i> (1954) Daniel Creamer	1.50
42	<i>The Share of Financial Intermediaries in National Wealth and National Assets, 1900-1949</i> (1954) Raymond W. Goldsmith	1.50
43	<i>Trends and Cycles in Capital Formation by United States Railroads, 1870-1950</i> Melville J. Ulmer	(in press)
44	<i>The Growth of Physical Capital in Agriculture, 1870-1950</i> Alvin S. Tostlebe	(in press)
45	<i>Capital and Output Trends in Mining Industries, 1870-1948</i> Israel Borenstein	(in press)

ALL TECHNICAL PAPERS IN PRINT

3	<i>Basic Yields of Corporate Bonds, 1900-1942</i> (1942) David Durand	.50
4	<i>Currency Held by the Public, the Banks, and the Treasury, Monthly, December 1917-December 1944</i> (1947) Anna Jacobson Schwartz and Elma Oliver	.75
5	<i>Concerning a New Federal Financial Statement</i> (1947) Morris A. Copeland	1.00
7	<i>Factors Affecting the Demand for Consumer Instalment Sales Credit</i> (1952) Avram Kisselgoff	1.50
8	<i>A Study of Aggregate Consumption Functions</i> (1953) Robert Ferber	1.50
9	<i>The Volume of Residential Construction, 1889-1950</i> (1954) David M. Blank	1.50
10	<i>Factors Influencing Consumption: An Experimental Analysis of Shoe Buying</i> Ruth P. Mack	(in press)



## HOW TO OBTAIN NATIONAL BUREAU PUBLICATIONS

The National Bureau of Economic Research is a nonprofit membership corporation organized to make impartial studies in economic science.

Its books are published and distributed (since April 1, 1953) by Princeton University Press; its *Occasional Papers* and *Technical Papers* are published and distributed by the National Bureau itself.

Publications may be obtained either on contributing subscriptions or by purchase.

A contributor of \$25 or more a year is entitled to receive a complimentary copy of each current publication — *books*, *Occasional Papers*, *Technical Papers*, and the *Annual Report* — in advance of release to the public and, in addition, is entitled to a one-third discount on all National Bureau publications purchased.

An associate contributor of \$10 a year receives a complimentary copy of each *Occasional Paper*, *Technical Paper*, and the *Annual Report*, and is entitled to a one-third discount on all publications purchased. Only the following are eligible to become associates; teachers, students, and libraries in recognized educational institutions; members of scientific societies or of private nonprofit research agencies.

A contributor of \$4 receives the next five *Occasional Papers* (or, if desired, any *Technical Paper* issued during this period may be substituted) and the *Annual Report*.

Contributions to the National Bureau are deductible in calculating federal income taxes.

**NON-CONTRIBUTORS** should send orders for *books* to:

Princeton University Press  
Princeton, New Jersey

**NON-CONTRIBUTORS** should send orders for *Papers* and requests for the *Annual Report* directly to:

**CONTRIBUTORS** should send all orders for *books* and *Papers*, and requests for the *Annual Report* directly to:

**NATIONAL BUREAU OF ECONOMIC RESEARCH, INC.**  
261 Madison Avenue  
New York 16, N. Y.

