

This PDF is a selection from an out-of-print volume from the National Bureau of Economic Research

Volume Title: Philanthropy and Public Policy

Volume Author/Editor: Frank G. Dickinson, ed.

Volume Publisher: UMI

Volume ISBN: 0-87014-468-5

Volume URL: <http://www.nber.org/books/dick62-1>

Publication Date: 1962

Chapter Title: Front matter, Philanthropy and Public Policy

Chapter Author: Frank G. Dickinson

Chapter URL: <http://www.nber.org/chapters/c1988>

Chapter pages in book: (p. -16 - 0)

Philanthropy and Public Policy

FRANK G. DICKINSON, *Editor*

Conference on Philanthropy

Sponsored by

National Bureau of Economic Research

and

Merrill Center for Economics

NATIONAL BUREAU OF ECONOMIC RESEARCH

1962

DISTRIBUTED BY COLUMBIA UNIVERSITY PRESS

New York and London

Copyright © 1962 by
National Bureau of Economic Research, Inc.
261 Madison Avenue, New York 16, N. Y.

All Rights Reserved

LIBRARY OF CONGRESS CATALOG CARD NUMBER: 62-20569

Price: \$3.50

Printed in the United States of America

National Bureau of Economic Research, Inc.
**Conference on Philanthropy, Merrill Center for Economics,
 1961.**

Philanthropy and public policy. Sponsored by National Bureau of Economic Research and Merrill Center for Economics. Frank G. Dickinson, editor. (New York, National Bureau of Economic Research, 1962.

x, 145 p. diagrs., tables. 23 cm.

Bibliographical footnotes.

1. Endowments. i. Dickinson, Frank Greene, 1899- ed.
 ii. National Bureau of Economic Research. iii. Amherst College.
 Merrill Center for Economics, Southampton, N. Y. iv. Title.

HV25.C7 1961

361.73

62-20569

MATERIAL SUBMITTED BY PUBLISHER.

2,005,979

National Bureau of Economic Research, Inc.
**Conference on Philanthropy, Merrill Center for Economics,
1961.**

Philanthropy and public policy. Sponsored by National Bureau of Economic Research and Merrill Center for Economics. Frank G. Dickinson, editor. (New York, National Bureau of Economic Research, 1962.

x, 145 p. diagrs., tables. 23 cm.

Bibliographical footnotes.

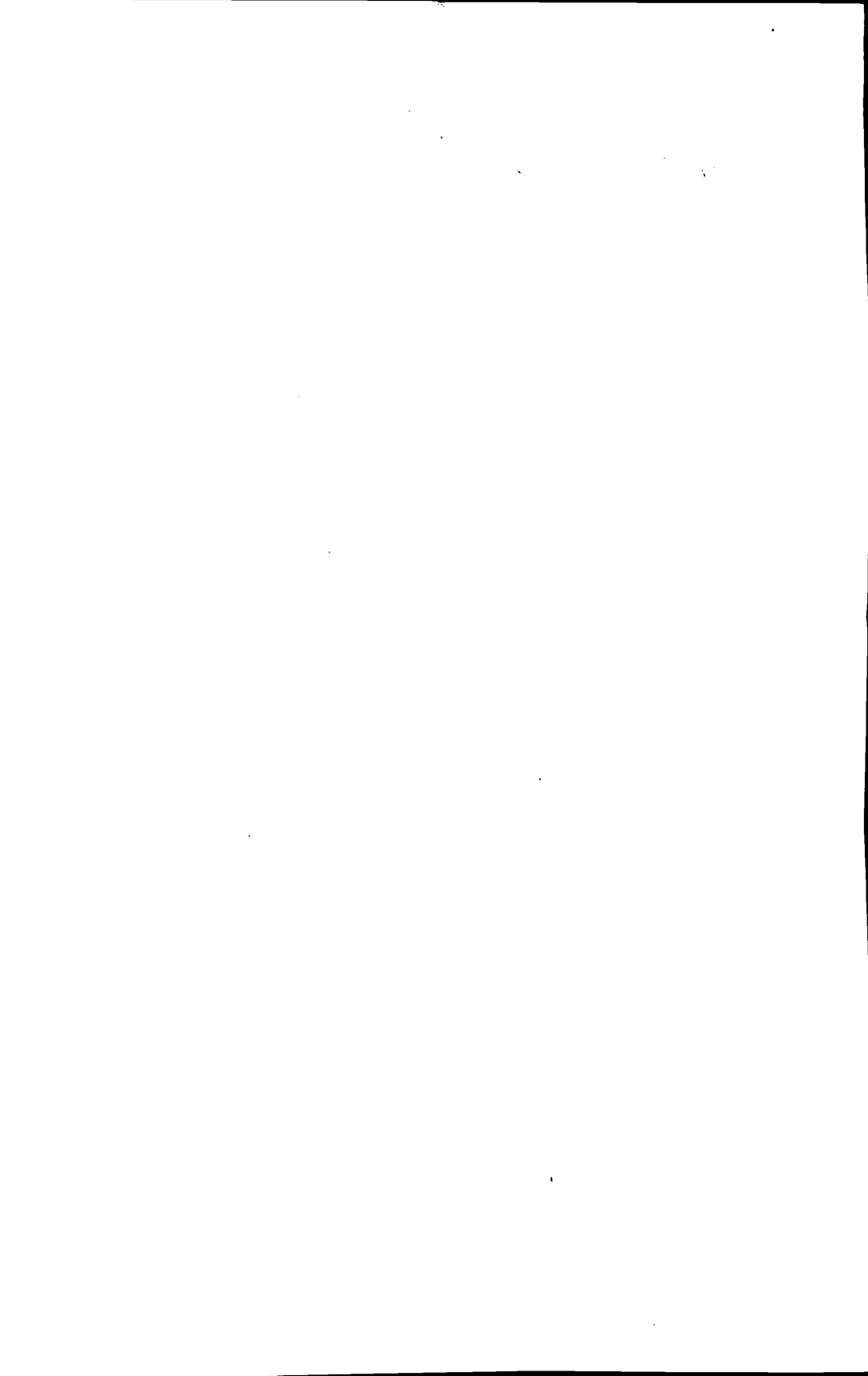
I. Endowments. I. Dickinson, Frank Greene, 1890- ed.
II. National Bureau of Economic Research. III. Amherst College.
Merrill Center for Economics, Southampton, N. Y. IV. Title.

HV25.C7 1961

361.73

62-20569

MATERIAL SUBMITTED BY PUBLISHER.



NATIONAL BUREAU OF ECONOMIC RESEARCH
1962

OFFICERS

Harold M. Groves, *Chairman*
Arthur F. Burns, *President*
Albert J. Hettinger, Jr., *Vice President*
Donald B. Woodward, *Treasurer*
Solomon Fabricant, *Director of Research*
Geoffrey H. Moore, *Associate Director of Research*
Hal B. Lary, *Associate Director of Research*
William J. Carson, *Executive Director*

DIRECTORS AT LARGE

Robert B. Anderson, *New York City*
Wallace J. Campbell, *Nationwide Insurance*
Erwin D. Canham, *Christian Science Monitor*
Solomon Fabricant, *New York University*
Marion B. Folsom, *Eastman Kodak Company*
Crawford H. Greenewalt, *E. I. du Pont de Nemours & Company*
Gabriel Hauge, *Manufacturers Hanover Trust Company*
A. J. Hayes, *International Association of Machinists*
Albert J. Hettinger, Jr., *Lazard Frères and Company*
Nicholas Kelley, *Kelley Drye Newhall Maginnes & Warren*
H. W. Laidler, *League for Industrial Democracy*
George B. Roberts, *Larchmont, New York*
Harry Scherman, *Book-of-the-Month Club*
Boris Shishkin, *American Federation of Labor and Congress of Industrial Organizations*
George Soule, *South Kent, Connecticut*
Joseph H. Willits, *Armonk, New York*
Donald B. Woodward, *A. W. Jones and Company*
Theodore O. Yntema, *Ford Motor Company*

DIRECTORS BY UNIVERSITY APPOINTMENT

V. W. Bladen, <i>Toronto</i>	Walter W. Heller, <i>Minnesota</i>
Arthur F. Burns, <i>Columbia</i>	Maurice W. Lee, <i>North Carolina</i>
Lester V. Chandler, <i>Princeton</i>	Lloyd G. Reynolds, <i>Yale</i>
Melvin G. de Chazeau, <i>Cornell</i>	Paul A. Samuelson, <i>Massachusetts</i>
Frank W. Fetter, <i>Northwestern</i>	<i>Institute of Technology</i>
R. A. Gordon, <i>California</i>	Theodore W. Schultz, <i>Chicago</i>
Harold M. Groves, <i>Wisconsin</i>	Willis J. Winn, <i>Pennsylvania</i>
Gottfried Haberler, <i>Harvard</i>	

DIRECTORS BY APPOINTMENT OF OTHER ORGANIZATIONS

Percival F. Brundage, *American Institute of Certified Public Accountants*
Harold G. Halcrow, *American Farm Economic Association*
Theodore V. Houser, *Committee for Economic Development*
S. H. Ruttenberg, *American Federation of Labor and Congress of Industrial Organizations*
Murray Shields, *American Management Association*
Willard L. Thorp, *American Economic Association*
W. Allen Wallis, *American Statistical Association*
Harold F. Williamson, *Economic History Association*

DIRECTORS EMERITI

Shepard Morgan, *Norfolk, Connecticut*
N. I. Stone, *New York City*

**RELATION OF NATIONAL BUREAU DIRECTORS TO
PUBLICATIONS REPORTING CONFERENCE PROCEEDINGS**

Since the present volume is a record of conference proceedings, it has been exempted from the rules governing submission of manuscripts to, and critical review by, the Board of Directors of the National Bureau. It has, however, been reviewed and accepted for publication by the Director of Research.

(Resolution adopted July 6, 1948, as revised November 21, 1949)

Participants in Conference on Philanthropy

F. Emerson Andrews, *The Foundation Library Center*
Vaughn D. Bornet, *The RAND Corporation*
Kenneth E. Boulding, *University of Michigan*
James M. Buchanan, *University of Virginia*
Merle Curti, *University of Wisconsin*
Frank G. Dickinson, *National Bureau of Economic Research*
Richard Eells, *General Electric Company*
Solomon Fabricant, *National Bureau of Economic Research*
Leigh Gerdine, *Washington University*
Eli Ginzberg, *Columbia University*
Robert H. Hamlin, *Harvard University*
Covington Hardee, *Clark, Carr & Ellis, New York City*
Edward J. Kane, *Princeton University*
Thomas Karter, *Department of Health, Education, and Welfare*
Herbert E. Klarman, *Hospital Council of Greater New York*
Robert H. MacRae, *Welfare Council of Metropolitan Chicago*
James N. Morgan, *University of Michigan*
Natalie Naylor, *National Bureau of Economic Research*
Ralph L. Nelson, *National Bureau of Economic Research*
Ray M. Peterson, *The Equitable Life Assurance Society of the United States*
Eustace Seligman, *Sullivan and Cromwell, New York City*
Maud Seligman, *New York City*

Participants in Conference on Philanthropy

Clarice Brows Thorp, *The Merrill Center for Economics*

Willard L. Thorp, *Amherst College*

W. Homer Turner, *U.S. Steel Foundation, Inc.*

William S. Vickrey, *Columbia University*

Colston E. Warne, *Amherst College*

John H. Watson, III, *National Industrial Conference Board*

W. Rulon Williamson, *Washington, D. C.*

Joseph H. Willits, *Armonk, New York*

Donald Young, *Russell Sage Foundation*

Contents

PREFACE	<i>Frank G. Dickinson</i>	ix
AN ECONOMIST'S VIEW OF PHILANTHROPY	<i>Solomon Fabricant</i>	1
THE GROWTH OF PRIVATE AND PUBLIC PHILANTHROPY	<i>Frank G. Dickinson</i>	11
ONE ECONOMIST'S VIEW OF PHILANTHROPY	<i>William S. Vickrey</i>	31
NOTES ON A THEORY OF PHILANTHROPY	<i>Kenneth E. Boulding</i>	57
HOSPITALS AND PHILANTHROPY	<i>Eli Ginzberg</i>	73
PHILANTHROPY AND THE BUSINESS CORPORATION, EXISTING GUIDELINES—FUTURE POLICY	<i>Covington Hardee</i>	103
HIGHLIGHTS OF THE CONFERENCE	<i>Frank G. Dickinson</i>	111
THE POOR LAW REVISITED	<i>Willard L. Thorp</i>	129

Preface

THE National Bureau of Economic Research in cooperation with the Merrill Center for Economics held a conference on philanthropy at the Merrill Center, Southampton, Long Island, from June 26 through June 30, 1961; the conference was continued by the latter through July 7. Willard L. Thorp, Director of the Merrill Center, was chairman of the eighteen sessions held.

The conference was organized to examine economic aspects of philanthropy with particular attention to public policy. The scope of the conference is indicated in the following suggestive questions which were included in a statement sent in advance to the conferees:

What is the appropriate "division of labor" among government, the market, and private philanthropy, in meeting human needs most effectively? Have the appropriate lines of division changed; do they continue to change; in what direction should they change? Should government continue to subsidize (or encourage) private philanthropy through the various provisions of the tax system (for example, tax exemption of property and of income; inclusion of philanthropic contributions among deductions for personal and corporate tax purposes)? Should government expand or contract its direct support, or alter the ways in which it directly supports private philanthropy? What of the respective roles of the federal, state and local governments? Should philanthropy, for purposes of governmental support, be redefined in any way? In what directions should private philanthropy concentrate its efforts, taking account of past and prospective expansion of govern-

Preface

mental activities and of market developments (private insurance, etc.)? What media of giving should be favored by private givers?

Five papers prepared for the conference and two earlier papers (by Fabricant and Dickinson) were sent to the conferees for use as background materials, but not for formal discussion at the conference. One of these, "Voluntarism in America—Attitudes and Behavior," by James N. Morgan, presenting data on contributions to church, charity, and other individuals as well as attitudes toward interfamily support, will be largely printed in *Income and Welfare in the United States*, to be published by McGraw-Hill in 1962. After the conference, Willard L. Thorp prepared a paper entitled "The Poor Law Revisited." His paper, the other six papers, and my brief digest of what was said at the conference comprise this volume.

Special acknowledgment is made to Amherst College and the Merrill Center for Economics, and especially to the Director and Assistant Director of the Center, Willard L. Thorp and Clarice Brows Thorp, for cosponsoring the conference and for permitting us to utilize the discussions of both weeks; to the Russell Sage Foundation which aided in financing the conference; to the authors of the papers and the participants in the conference; and to Edward J. Kane, who served as rapporteur and whose mimeographed summaries of the individual sessions proved helpful. The preparation of the volume was greatly aided also by the extensive notes taken at each session by Natalie Naylor. H. Irving Forman drew the charts.

It is our hope that these papers will illuminate this ill-defined area of our economy and stimulate economists and others to delve much deeper into a dynamic subject which is not bounded by market forces.

FRANK G. DICKINSON

*Northern Illinois University
DeKalb, Illinois*

Philanthropy and Public Policy

