

This PDF is a selection from an out-of-print volume from the National Bureau of Economic Research

Volume Title: Capital in Transportation, Communications, and Public Utilities: Its Formation and Financing

Volume Author/Editor: Melville J. Ulmer

Volume Publisher: UMI

Volume ISBN: 0-870-14102-3

Volume URL: <http://www.nber.org/books/ulme60-1>

Publication Date: 1960

Chapter Title: Preface and Table of contents to "Capital in Transportation, Communications, and Public Utilities: Its Formation and Financing"

Chapter Author: Melville J. Ulmer

Chapter URL: <http://www.nber.org/chapters/c1488>

Chapter pages in book: (p. -23 - 0)

## P R E F A C E

THIS study grew out of a general inquiry into the secular growth of capital undertaken by the National Bureau of Economic Research in 1950. It was made possible by a generous grant from the Life Insurance Association of America.

It is a pleasure to acknowledge, and express gratitude for, the many debts incurred in the course of this study. The manuscript was read by Moses Abramovitz, Solomon Fabricant, Michael Gort, Simon Kuznets, and Geoffrey H. Moore, all of whom offered valuable suggestions. Periodic meetings during the planning stages made possible a fruitful exchange of views, also, with Morris A. Copeland, Daniel Creamer, Raymond W. Goldsmith, Leo Grebler, and Alvin S. Tostlebe. I had the benefit of useful comments from several Directors of the National Bureau—M. G. de Chazeau, Oswald W. Knauth, and Harold F. Williamson. In the extensive preliminary task of constructing statistical estimates, I was fortunate to have the competent assistance of Celia Gody. Milton Abelson and John Coleman also contributed to the statistical work in its earlier stages. I am grateful, also, for the skillful draftsmanship and imagination of H. Irving Forman, who prepared the charts, and for the editorial assistance of Mary Phelps and Emilie M. Hatfield. As with any strenuous and sustained effort, the sympathetic support of one's family and friends is vital. I acknowledge that in this regard my wife and children performed with extraordinary forbearance.

All the authors of the monographs in this series had the benefit of the aid of the Advisory Committee on the Study of Capital Formation and Financing, which assisted in drafting plans for the over-all inquiry and reviewed the final manuscripts. The committee was composed of Leo Wolman, Chairman; Sherwin C. Badger, Donald R. Belcher, Claude L. Benner, Percival F. Brundage, Arthur F. Burns, W. Braddock Hickman, Edgar M. Hoover, DeLong H. Monohan, and Geoffrey H. Moore.

MELVILLE J. ULMER

*Gilmanton, I.W.  
New Hampshire*



# CONTENTS

FOREWORD, by Simon Kuznets	ix
PREFACE	xvii
1. THE BACKGROUND	1
Framework and Objectives	1
Types of Patterns	2
The Time Factor	3
Characteristics of the Industries	4
The Data	6
2. THE GENERAL SECULAR PATTERN	10
An Over-All View, 1870-1950	11
A Model Pattern	20
Significance of the Model	22
3. VARIATIONS IN SECULAR PATTERNS	24
Capital Flows	26
The Stock of Capital	37
Declining Relative Rates of Growth	37
Output	41
Application of the Model Pattern	51
4. TRENDS IN CAPITAL COEFFICIENTS	62
Principal Concepts and Their Relationships	62
The Data	64
The Aggregative Trend	65
Individual Industries	74
5. FACTORS UNDERLYING LONG-TERM TRENDS: OUTPUT	77
The Vacuum Effect	78
Output and National Aggregates: The Vigorous	
Industries	80
Retarding Influences	86
Output and National Aggregates: Retarded and	
Declining Industries	89
6. FACTORS UNDERLYING LONG-TERM TRENDS: CAPITAL- PRODUCT RATIOS AND CAPITAL FORMATION	93
Determinants of Trends in the Capital-Product	
Ratio	93
Some Aspects of the Variation among Industries	101

CONTENTS

The Role of Wages and Interest	107
Secular Trends in Investment: Some Concluding Observations	110
7. LONG CYCLES	115
The Measurement of Long Cycles	115
The Pattern of Long Cycles	117
Comparison with Other Economic Segments	133
Some Theoretical Considerations	135
8. THE EVOLUTION OF FINANCIAL STRUCTURES	143
The Flow of Money Capital	143
The Statistical Setting	149
The Sources and Uses of Capital Funds	154
The Anatomy of Internal Financing	157
Long-Term Debt and Equity	168
Appendix: The Derivation of the Equation for the Rate of Internal Financing	170
9. RÉSUMÉ AND PROSPECT	174
The Secular Pattern of Capital Formation	174
Secular Trends in Production	178
Capital Coefficients	179
Underlying Factors	180
Output	180
Capital-Product Ratios	184
Capital Formation	186
Long Cycles	187
Finance	188
The Outlook	189
APPENDIXES	201
A. ON THE DERIVATION AND ACCURACY OF CAPITAL FORMATION DATA	203
Tests of Accuracy	203
Gross Capital Formation	204
Deflation	210
Net Capital Expenditures and Capital Consumption	213
An Illustration: The Derivation of Data for the Railroads	218
Book Value of Road and Equipment	218
Content	218

CONTENTS

Derivation	219
Gross Capital Expenditures	220
Content	220
Derivation of Current Dollar Estimates	220
Exclusion of Land	223
Deflation	223
Capital Consumption	224
Original Cost Dollars	224
Current Dollars	226
Constant Dollars	229
Net Capital Expenditures	229
Current and Constant Dollars	229
Value of Road and Equipment	229
Constant Dollars	229
Current Dollars	230
B. NOTES AND TABLES ON THE DERIVATION OF CAPITAL FORMATION DATA FOR ALL REGULATED INDUSTRIES	231
C. TABLES ON THE DERIVATION OF CAPITAL FORMATION DATA FOR RAILROADS	255
D. NOTES AND TABLES ON THE DERIVATION OF CAPITAL FORMATION DATA FOR ELECTRIC LIGHT AND POWER	293
E. NOTES AND TABLES ON THE DERIVATION OF CAPITAL FORMATION DATA FOR TELEPHONES	367
F. NOTES AND TABLES ON THE DERIVATION OF CAPITAL FORMATION DATA FOR STREET AND ELECTRIC RAILWAYS	391
G. NOTES AND TABLES ON THE DERIVATION OF CAPITAL FORMATION DATA FOR LOCAL BUS LINES	437
H. TABLE ON THE DERIVATION OF CAPITAL FORMATION DATA FOR ALL OTHER REGULATED INDUSTRIES	451
I. NOTES AND TABLES ON THE DERIVATION OF OUTPUT AND CAPITAL-PRODUCT RATIOS FOR ALL REGULATED INDUSTRIES AND COMPONENTS	455
J. SOURCES AND USES OF FUNDS	501
K. TABLES PRESENTING NINE-YEAR MOVING AVERAGES OF THE DATA ON CAPITAL FORMATION, OUTPUT, AND CAPITAL-PRODUCT RATIOS FOR ALL REGULATED INDUSTRIES AND COMPONENTS	519
INDEX	543



## TABLES

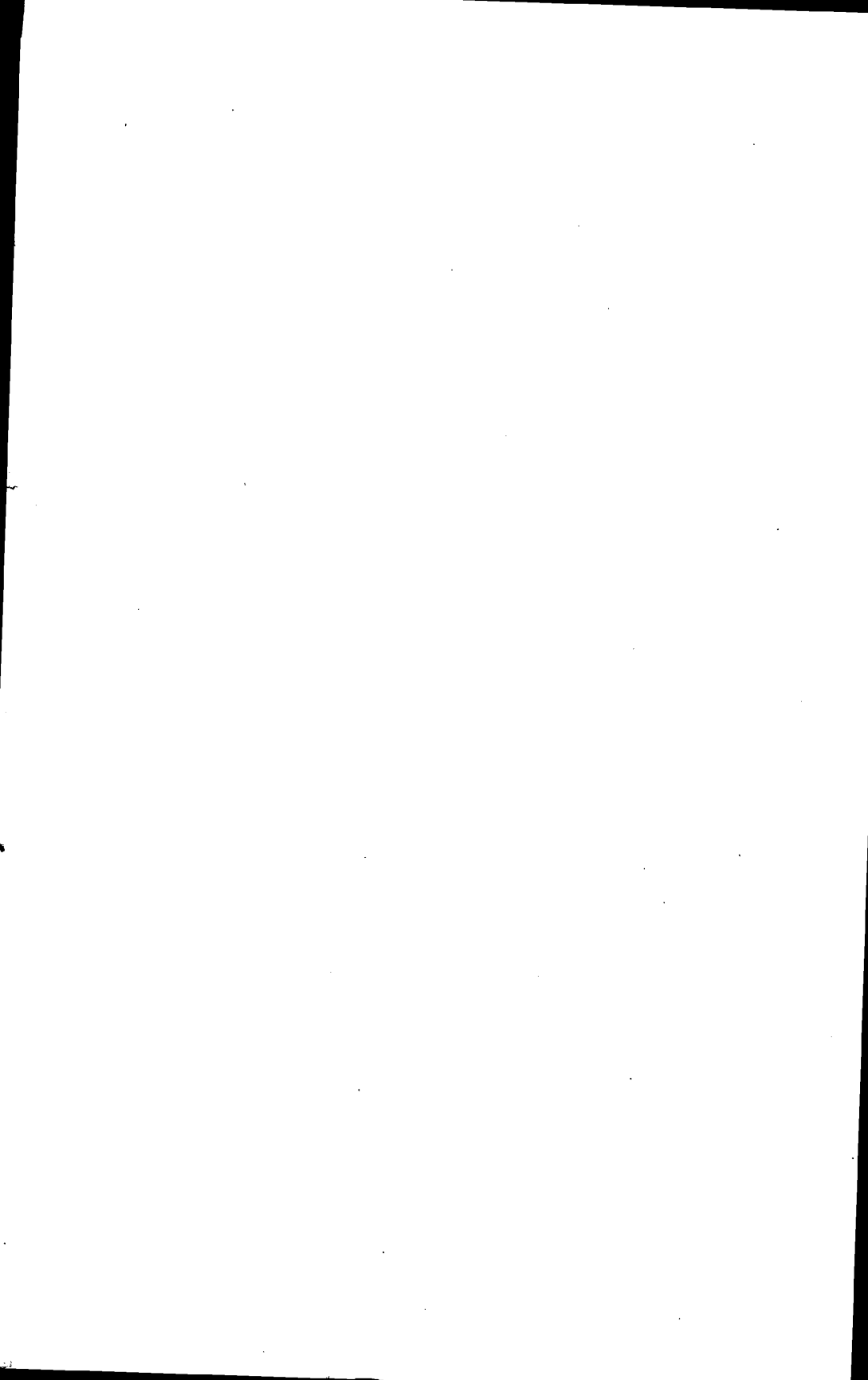
1. Annual Average Capital Formation of All Regulated Industries, by Twenty-Year Periods	11
2. Annual Average Capital Formation of All Regulated Industries in Nine-Year Periods, Selected Dates	12
3. Annual Average Capital Formation of All Regulated Industries during Long Cycles, Dated from Nine-Year Moving Averages	13
4. Annual Average Capital Consumption of All Regulated Industries, by Decades	15
5. Percentage Changes in Constant Dollar Value of Plant and Equipment and of Output, All Regulated Industries	18
6. Annual Average Percentage Increases in Constant Dollar Value of Plant and Equipment, All Regulated Industries, during Long Cycles	18
7. Percentage of Total for All Regulated Industries Accounted for by Each Component in Stock of Reproducible Capital and Capital Formation, Selected Decades	25
8. Percentage of Total for All Regulated Industries Accounted for by Each Component in Output	26
9. Net Capital Formation, All Regulated Industries and Components, Annual Averages by Decades, 1870-1949	33
10. Net Capital Formation, Component Regulated Industries, Nine-Year Averages, 1876-1950	34
11. Gross Capital Formation, 1929 Prices, All Regulated Industries and Components, Annual Averages for the Decades, 1870-1950	36
12. Capital Consumption, 1929 Prices, All Regulated Industries and Components, Annual Averages for the Decades 1870-1950	36
13. Average Annual Percentage Changes in Constant Dollar Value of Plant and Equipment during Long Cycles, All Regulated Industries and Components	38
14. Percentage Changes in Constant Dollar Value of Plant and Equipment, by Decades, 1870-1950, Component Regulated Industries	39
15. Output per Annum, Component Regulated Industries, 1929 Dollars, Nine-Year Averages, 1886-1950	42
16. Average Changes in Output, per Annum, All Regulated Industries and Components, 1886-1950	44
17. Percentage Changes in Output, by Decades, Component Regulated Industries, 1886-1950	52

TABLES

18. Key Dates in Pattern of Secular Growth of Capital, All Regulated Industries and Components	57
19. Key Dates in Pattern of Secular Growth of Output, All Regulated Industries and Components	59
20. Ratios of National Income Originating in Regulated Industries to Operating Revenues, Current Dollars, Selected Years, 1890-1946	65
21. Marginal Capital-Product Ratio, All Regulated Industries and Components, Selected Periods	73
22. Output of Vigorously Growing Industries in Relation to National Income and Population	82
23. Nine-Year Averages of Urban Population Income	85
24. Output of Retarded and Declining Industries in Relation to National Income and Population	90
25. Relationship between Level and Magnitude of Decline in Capital-Product Ratios, Selected Industries	102
26. Capital-Product Ratios and Relative Importance of Labor Costs in Steam Railroads and Manufacturing, 1899, 1919, and 1939	104
27. Nine-Year Averages of Indexes of Capital-Product Ratios, Output per Man-Hour, and Capital-Labor Ratios for Steam Railroads and Electric Light and Power (1939 = 100)	105
28. Capital-Product Ratio, Labor Productivity, and Capital-Labor Ratio in Manufacturing and Mining; Wages in Manufacturing; and Interest Rates, 1880-1948	108
29. Capital-Product Ratios for Steam Railroads, Wages of Railroad Employees, and Interest Rates	109
30. Value of Plant and Equipment of the Regulated Industries as Percentage of Net National Product, 1870-1950	111
31. Gross Capital Formation of the Regulated Industries as Percentage of National Gross Capital Formation, 1876-1950	112
32. Per-Capita Value of Plant and Equipment, Regulated Industries and Components, 1929 Dollars, 1870-1950	113
33. All Regulated Industries: Dates, Duration, and Amplitude of Long Cycles in Gross Capital Formation, Based on Nine-Year Moving Averages	118
34. Steam Railroads: Dates, Duration, and Amplitude of Long Cycles in Gross Capital Formation, Based on Nine-Year Moving Averages	120

TABLES

35. Electric Light and Power: Dates, Duration, and Amplitude of Long Cycles in Gross Capital Formation, Based on Nine-Year Moving Averages	121
36. Telephones: Dates, Duration, and Amplitude of Long Cycles in Gross Capital Formation, Based on Nine-Year Moving Averages	122
37. All Other Utilities: Dates, Duration, and Amplitude of Long Cycles in Gross Capital Formation, Based on Nine-Year Moving Averages	123
38. All Regulated Industries: Dates, Duration, and Amplitude of Long Cycles in Gross Capital Formation, Based on Annual Data	124
39. Steam Railroads: Dates, Duration, and Amplitude of Long Cycles in Gross Capital Formation, Based on Annual Data	125
40. Electric Light and Power: Dates, Duration, and Amplitude of Long Cycles in Gross Capital Formation, Based on Annual Data	126
41. Telephones: Dates, Duration, and Amplitude of Long Cycles in Gross Capital Formation, Based on Annual Data	127
42. Street and Electric Railways: Dates, Duration, and Amplitude of Long Cycles in Gross Capital Formation, Based on Annual Data	128
43. All Other Utilities: Dates, Duration, and Amplitude of Long Cycles in Gross Capital Formation, Based on Annual Data	129
44. Long Cycle Turning Points in Selected Series	133
45. All Regulated Industries: Value of Plant and Equipment, Capital Formation, and Capital Consumption, Current Dollars, Nine-Year Moving Averages	147
46. Sources and Uses of Funds, Steam Railroads, 1880-1949: Percentage Distributions	150
47. Sources and Uses of Funds, Electric Light and Power, 1881-1950: Percentage Distributions	151
48. Sources and Uses of Funds, Telephones, 1877-1950: Percentage Distributions	152
49. Sources and Uses of Funds, Street and Electric Railways: Percentage Distributions	153
50. Net Rate of Capital Flow and Rate of Capital Consumption, Selected Components	160
51. Comparison of Actual and Hypothetical Rates of Financing	163



## APPENDIX TABLES

B-1. Value of Plant and Equipment, Capital Formation, and Capital Consumption, All Regulated Industries, Annual Data, 1870-1951	235
B-2. Gross Capital Expenditures, Excluding Land, Current Dollars: All Regulated Industries, 1939-1950	238
B-3. Gross Capital Expenditures, Excluding Land, Current Dollars: All Regulated Industries, 1919-1938	239
B-4. Estimated Gross Capital Expenditures for Motor Transportation and Transportation Services, 1919-1938	240
B-5. Ratio of Gross Capital Expenditures for Motor Transportation to the Value of Business Motor Vehicle Factory Sales, 1939, 1945-1949	241
B-6. Book Values, Excluding Land: All Transportation, Communications, and Public Utilities, Selected Dates, 1880-1948	242
B-7. Capital Assets, Excluding Land: Transportation, Communications, and Public Utilities, 1948	244
B-8. Book Value of Plant and Equipment, Manufactured Gas	245
B-9. Gross Capital Expenditures, Excluding Land, Current Dollars: All Regulated Industries, 1870-1918	246
B-10. Derivation of Cost Indexes for Capital Stock, Capital Formation, and Capital Consumption, All Regulated Industries, 1870-1950	248
B-11. Capital Consumption, 1929 Dollars, All Transportation, Communications, and Public Utilities, Selected Dates, 1870-1922	251
B-12. Capital Consumption, 1929 Dollars: All Regulated Industries, 1870-1950	252
C-1. Value of Road and Equipment, Capital Formation, and Capital Consumption, Steam Railroads, Annual Data, 1870-1950	256
C-2. Derivation of Book Value of Road and Equipment of Steam Railroads, 1891-1951	259
C-3. Derivation of Book Value of Road and Equipment of Steam Railroads, 1860, and 1869-1890	262
C-4. Derivation of Gross Capital Expenditures by Steam Railroads in Current Dollars, 1912-1950	264

APPENDIX TABLES

C-5. Derivation of Gross Capital Expenditures of Steam Railroads from Samples in Selected Years	266
C-6. Book Value of Road and Equipment and Gross Capital Expenditures of Steam Railroads in Selected States, Year Ending June 30, 1914	267
C-7. Estimation of Gross Capital Expenditures from Control Samples, Year Ending June 30, 1914	267
C-8. Derivation of Track Mileage, Steam. Railroads, 1869-1911	268
C-9. Derivation of Gross Capital Expenditures, Including Land, by Steam Railroads, 1870-1912	270
C-10. Derivation of Gross Capital Expenditures, Excluding Land, by Steam Railroads, 1870-1950	272
C-11. Derivation of Index of Cost of Road and Equipment of Steam Railroads, 1840-1950	274
C-12. Derivation of Capital Consumption by Steam Railroads in Original Cost Dollars, 1870-1950	278
C-13. Derivation of Original Cost of Road and Equipment, and Retirements, 1870-1916	280
C-14. Derivation of Reproduction Cost New of Road and Equipment, Excluding Land and Landrights, of Steam Railroads in Selected ICC Reporting Years	282
C-15. Derivation of Capital Consumption by Steam Railroads in Current Dollars, for Selected Years	283
C-16. Derivation of Retirements by Steam Railroads in Current Dollars, 1870-1949	284
C-17. Derivation of Reproduction Cost New of Road and Equipment of Steam Railroads, Excluding Land and Landrights, in Current Dollars, 1870-1951	288
C-18. Derivation of Capital Consumption by Steam Railroads in Current Dollars, 1870-1950	290
C-19. Derivation of Reproduction Cost Less Depreciation of Road and Equipment of Steam Railroads, January 1, 1937	292
D-1. Value of Plant and Equipment, Capital Formation, and Capital Consumption, Electric Light and Power, Annual Data, 1881-1950	320
D-2. Derivation of Book Value of Plant and Equipment, Electric Light and Power, Specified Dates, 1898-1922	322
D-3. Adjustment of Data for Value of Plant and	

APPENDIX TABLES

Equipment to Exclude Value of Land, Electric Light and Power	323
D-4. Derivation of Rate of Increase in Size per Station, Electric Light and Power, 1881-1902	324
D-5. Distribution by Five-Year Intervals of Plant and Equipment Totals for 1898 and 1902, Electric Light and Power	326
D-6. Derivation of Construction Cost Index, 1880-1911, and 1921-1923, Electric Light and Power	327
D-7. Derivation of Index of Cost of Construction Materials, Electric Light and Power, 1879-1889	328
D-8. Derivation of Distribution of Retirements, by Age of Equipment, Electric Light and Power	329
D-9. Estimated Distribution of Retirements of Equipment, by Dates of Installation, Electric Light and Power	329
D-10. Estimated Retirements and Gross Increase in Value of Plant and Equipment, Electric Light and Power	330
D-11. Estimated Retirements, Electric Light and Power Facilities, 1898-1932	331
D-12. Gross Capital Expenditures, Current Dollars, Electric Light and Power, 1881-1922, Selected Intervals	332
D-13. Gross Capital Expenditures, Current Dollars, Electric Light and Power, 1881-1902	333
D-14. Derivation of Estimated Generating Capacity, Electric Light and Power, 1902-1912	334
D-15. Gross Capital Expenditures, Current Dollars, Electric Light and Power, 1902-1912	335
D-16. Gross Capital Expenditures, Current Dollars, Electric Light and Power, 1913-1920	336
D-17. Gross Capital Expenditures, Current Dollars, Electric Light and Power, 1921-1937	337
D-18. Gross Capital Expenditures, Electric Light and Power, 1937-1950	338
D-19. Derivation of Construction Cost Index, Electric Light and Power, 1911-1951	339
D-20. Index of Construction Costs, Electric Light and Power, 1881-1950	341
D-21. Capital Consumption, 1929 Dollars, Electric Light and Power, 1881-1936	342
D-22. Value of Plant Additions Placed in Service, Electric Light and Power, 1937-1950	344

APPENDIX TABLES

D-23. Capital Consumption, 1929 Dollars, Electric Light and Power, 1937-1950	345
D-24. Capital Consumption, Original Cost Prices, Electric Light and Power, 1881-1950	346
D-25. Recorded Depreciation Charges and Computed Capital Consumption, Original Cost Prices, Electric Light and Power, 1912-1950	348
D-26. Value of Electric Light and Power Plant and Equipment Owned by Electric Utilities and User-Owned, 1929 Dollars, 1882-1951	349
D-27. Value of Electric Light and Power Plant and Equipment Owned by Electric Utilities and User-Owned, Current Dollars, 1882-1951	352
D-28. Gross Capital Expenditures, Current Dollars, Electric Light and Power Privately Owned and Publicly Owned Utilities, 1880-1950, Five-Year Averages	354
D-29. Gross Capital Expenditures, Current Dollars, Publicly Owned Plants except Federal, Electric Light and Power, Specified Intervals, 1881-1922	355
D-30. Gross Capital Expenditures, Current Dollars, Publicly Owned Plants except Federal, Electric Light and Power, Five-Year Intervals, 1881-1922	356
D-31. Gross Capital Expenditures, Current Dollars, Electric Light and Power, Publicly Owned Plants except Federal, 1923-1950	357
D-32. Gross Capital Expenditures, Current Dollars, Federal Plant, Electric Light and Power, 1921-1950	358
D-33. Value of Plant and Equipment, Publicly Owned Electric Light and Power Plants, 1929 Dollars, 1881-1949	359
D-34. Electric Light and Power Generating Capacity, Private and Public Utilities and User-Owned Facilities, 1900-1951	362
D-35. Ratios of Value of Electric Light and Power Plant and Equipment per Unit of Capacity, User-Owned to Utility-Owned, 1900, 1910, and 1920	363
D-36. Ratios of Value of User-Owned Electric Light and Power Plant and Equipment to Utility-Owned Plant and Equipment, 1900-1950	364
E-1. Value of Plant and Equipment, Capital Formation and Capital Consumption, Telephones, Annual Data, 1880-1950	374

APPENDIX TABLES

E-2. Gross Capital Expenditures, Current Dollars, Telephones, 1913-1950	376
E-3. Derivation of Value of Plant and Equipment, Telephones, December 31, 1880	378
E-4. Derivation of Value of Plant and Equipment, Original Cost Dollars, Telephones, 1880-1917	379
E-5. Depreciation Rates, Telephones, 1880-1950	380
E-6. Derivation of Relationship between Retirements and Depreciation, Original Cost Dollars	381
E-7. Gross Capital Expenditures, Current Dollars, Telephones, 1880-1912	382
E-8. Derivation of Plant and Equipment Cost Indexes, 1915-1950, Telephones	384
E-9. Derivation of Plant and Equipment Cost Index, 1878-1915, Telephones	385
E-10. Derivation of Capital Consumption, 1880-1917, 1880 Dollars	386
E-11. Derivation of Retirements, 1880 Dollars, 1917-1950	388
E-12. Derivation of Capital Consumption, 1917-1950, 1880 Prices	390
F-1. Value of Road and Equipment, Capital Formation, and Capital Consumption, Street and Electric Railways, Annual Data, 1870-1951	405
F-2. Gross Capital Expenditures, Street and Electric Railways, 1922-1941	408
F-3. Gross Capital Expenditures, Street and Electric Railways, 1942-1950	410
F-4. Gross Capital Expenditures Including Land, Street and Electric Railways, 1902 and 1907	412
F-5. Book Values, Street and Electric Railways, Selected Years, 1870-1902	413
F-6. Gross Capital Expenditures, Including Land and Including Power Departments, Street and Electric Railways; Selected Years, 1870-1913	414
F-7. Gross Capital Expenditures Excluding Land, but Including Power Departments, Street and Electric Railways; Selected Years, 1870-1913	415
F-8. Adjustment of Capital Expenditures to Exclude Power Departments: Ratio of Gross Capital Expenditures of Street Railway Light and Power Departments to Total Electric Light and Power Expenditures	416

## APPENDIX TABLES

F-9. Adjustment of Gross Capital Expenditures, Street and Electric Railways, to Exclude Expenditures for Power Departments	417
F-10. Gross Capital Expenditures, Street and Electric Railways, 1881-1889 and 1907-1922	418
F-11. Index of Construction Costs, Street and Electric Railways, 1850-1950	420
F-12. "Physical Life" Depreciation Rates, Street and Electric Railways	422
F-13. Gross Physical Assets in 1929 Dollars, Street and Electric Railways, 1870-1902	424
F-14. Gross Physical Assets in 1929 Dollars, Street and Electric Railways, 1907, 1912, 1917	426
F-15. Gross Physical Assets in 1929 Dollars, Street and Electric Railways, Selected Years, 1917-1950	427
F-16. Capital Consumption by "Physical Life" Depreciation, Street and Electric Railways, 1870-1950	428
F-17. Total Accrued Depreciation, Street and Electric Railways, 1902 and 1949	430
F-18. Derivation of Rate of Obsolescence, Street and Electric Railways, 1871-1902, and 1903-1949	432
F-19. Capital Consumption in 1929 Dollars, Street and Electric Railways, 1870-1950	434
G-1. Value of Plant and Equipment, Capital Formation, and Capital Consumption, Local Bus Lines, Annual Data, 1910-1951	440
G-2. Gross Capital Expenditures, Local Bus Lines, 1942-1950	442
G-3. Gross Capital Expenditures, Local Bus Lines, Affiliates of Street and Electric Railways, 1922-1941	443
G-4. Gross Capital Expenditures, Independent Local Bus Lines, 1910-1939	444
G-5. Gross and Net Investment, Bus Companies, New York City, 1909-1939	446
G-6. Gross Capital Expenditures, Current Dollars, Local Bus Lines, 1910-1950	447
G-7. Index of Cost of Plant and Equipment, Local Bus Lines, 1910-1950	448
G-8. Capital Consumption, Local Bus Lines, 1929 Dollars, 1910-1950	450
H-1. Value of Plant and Equipment, Capital Formation, and Capital Consumption, All Other Regulated Industries, Annual Data, 1870-1950	452

APPENDIX TABLES

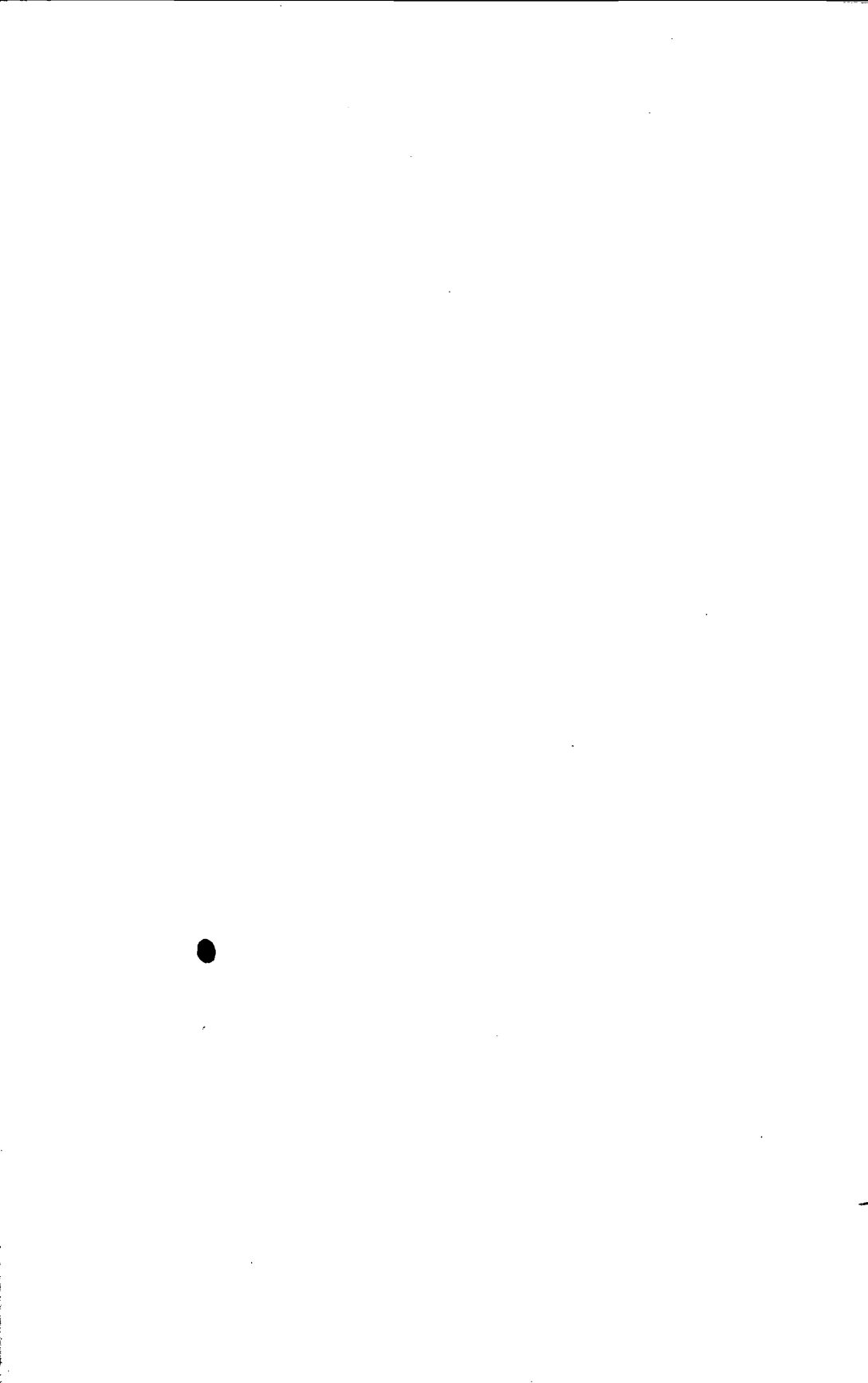
I-1. Output and Capital-Product Ratios, All Regulated Industries, Annual Data, 1890-1950	458
I-2. Derivation of Output, Total Utilities: Transportation Output, 1890-1950	460
I-3. Derivation of Output, All Regulated Industries: Transportation Output, 1941-1946	462
I-4. Derivation of Output, All Regulated Industries: 1929 Operating Revenues, Transportation Industries	463
I-5. Derivation of Output, All Regulated Industries: Output, Communications, and Public Utilities, 1890-1950	464
I-6. Derivation of Output, Total Utilities: Manufactured and Natural Gas Output Index, 1899-1950	466
I-7. Derivation of Output, All Regulated Industries: Manufactured and Natural Gas Output, 1943-1950	467
I-8. Derivation of Output, All Regulated Industries: Operating Revenues, Communications and Public Utilities, 1929-1950	468
I-9. Derivation of Output, All Regulated Industries: Telephones, Operating Revenues, 1929-1950	469
I-10. Derivation of Output, All Regulated Industries: Electric Light and Power, Operating Revenues, 1929-1950	470
I-11. Derivation of Output, All Regulated Industries: Gas Sales, 1929-1950	471
I-12. Derivation of Output, All Regulated Industries: Book Values of Plant and Equipment, Communications and Public Utilities	471
I-13. Output and Capital-Product Ratios, Steam Railroads, Annually, 1880-1950	472
I-14. Derivation of Output, Steam Railroads: Index of Output, 1880-1890	474
I-15. Derivation of Output, Steam Railroads: Index, 1939-1950	475
I-16. Output and Capital-Product Ratios: Electric Light and Power, Annually, 1887-1950	476
I-17. Derivation of Output, Electric Light and Power: Index, 1887-1912	478
I-18. Derivation of Output, Electric Light and Power: Index, Selected Years, 1932-1950	480

APPENDIX TABLES

I-19. Derivation of Output, Electric Light and Power: Index, 1932-1950	481
I-20. Output and Capital-Product Ratios, Telephones, Annually, 1890-1950	482
I-21. Derivation of Output, Telephones: Index, 1890-1937	484
I-22. Output and Capital-Product Ratios, Street and Electric Railways, Annually, 1890-1950	486
I-23. Derivation of Output, Street and Electric Railways: Passenger Traffic, 1890-1950	488
I-24. Derivation of Output, Street and Electric Railways: Freight Car-Miles, Electric Railways, 1902-1950	490
I-25. Derivation of Output, Street and Electric Railways: 1890-1926	491
I-26. Derivation of Output, Street and Electric Railways: Revenue Passengers, Street and Electric Railways and Local Bus Lines, 1937-1950	493
I-27. Output and Capital-Product Ratios, Local Bus Lines, Annually, 1922-1950	494
I-28. Derivation of Output, Local Bus Lines: Revenue Passengers, Local Bus Lines, 1922-1937	495
I-29. Output and Capital-Product Ratios, All Other Transportation and Utilities, Annually, 1890-1950	496
I-30. Annual Changes in Output, All Regulated Industries and Components, 1880-1950	498
J-1. Sources and Uses of Funds: All Railroads, 1880-1916	502
J-2. Sources and Uses of Funds: Class I Railroads and Their Lessors, 1914-1949	504
J-3. Sources and Uses of Funds: Electric Light and Power Companies, 1881-1937	507
J-4. Sources and Uses of Funds: Class A and B Electric Light and Power Companies, 1938-1950	509
J-5. Sources and Uses of Funds: Telephone Industry, 1891-1912	512
J-6. Sources and Uses of Funds: Bell Telephone System, 1913-1950	514
J-7. Sources and Uses of Funds: Street and Electric Railway Companies	517
K-1. Nine-Year Moving Averages of Value of Plant and Equipment, 1929 Dollars, All Regulated Industries and Components, 1874-1947	520

APPENDIX TABLES

K-2. Nine-Year Moving Averages of Gross Capital Expenditures, 1929 Dollars, All Regulated Industries and Components, 1874-1946	522
K-3. Nine-Year Moving Averages of Capital Consumption, 1929 Dollars, All Regulated Industries and Components, 1874-1946	524
K-4. Nine-Year Moving Averages of Net Capital Expenditures, 1929 Dollars, All Regulated Industries and Components, 1874-1946	526
K-5. Nine-Year Moving Averages of Value of Plant and Equipment, Current Dollars, All Regulated Industries and Components, 1874-1947	528
K-6. Nine-Year Moving Averages of Gross Capital Expenditures, Current Dollars, All Regulated Industries and Components, 1874-1946	530
K-7. Nine-Year Moving Averages of Capital Consumption, Current Dollars, All Regulated Industries and Components, 1874-1946	532
K-8. Nine-Year Moving Averages of Net Capital Formation, Current Dollars, All Regulated Industries and Components, 1874-1946	534
K-9. Nine-Year Moving Averages of Output, All Regulated Industries and Components, 1884-1946	536
K-10. Capital-Product Ratios, All Regulated Industries and Components, Based on Nine-Year Moving Averages, 1884-1946	538
K-11. Annual Changes in Nine-Year Moving Averages of Output, All Regulated Industries and Components, 1885-1946	540



## CHARTS

1. Value of Plant and Equipment and Capital Formation, All Regulated Industries, 1929 Dollars, 1870-1951	17
2. Output and Changes in Output, All Regulated Industries, 1929 Dollars, 1880-1950	19
3. Model Pattern of Secular Growth in Industry	21
4. Value of Road and Equipment and Capital Formation, Steam Railroads, 1929 Dollars, 1870-1951	27
5. Value of Plant and Equipment and Capital Formation, Electric Light and Power, 1929 Dollars, 1881-1951	28
6. Value of Plant and Equipment and Capital Formation, Telephones, 1929 Dollars, 1880-1951	29
7. Value of Road and Equipment and Capital Formation, Street and Electric Railways, 1929 Dollars, 1870-1951	30
8. Value of Plant and Equipment and Capital Formation, Local Bus Lines, 1929 Dollars, 1910-1951	31
9. Value of Plant and Equipment and Capital Formation, All Other Utilities and Transportation, 1929 Dollars, 1870-1951	32
10. Output and Changes in Output, 1929 Dollars, Steam Railroads, 1880-1950	45
11. Output and Changes in Output, 1929 Dollars, Electric Light and Power, 1887-1950	46
12. Output and Changes in Output, 1929 Dollars, Telephones, 1890-1950	47
13. Output and Changes in Output, 1929 Dollars, Street and Electric Railways, 1890-1950	48
14. Output and Changes in Output, 1929 Dollars, Local Bus Lines, 1922-1950	49
15. Output and Changes in Output, 1929 Dollars, All Other Utilities, 1890-1950	50
16. Capital-Product Ratios, All Regulated Industries, 1880-1950	66
17. Capital-Product Ratios, Steam Railroads, 1880-1950	67
18. Capital-Product Ratios, Electric Light and Power, 1887-1950	68
19. Capital-Product Ratios, Telephones, 1890-1950	69
20. Capital-Product Ratios, Street and Electric Railways, 1890-1950	70

## CHARTS

21. Capital-Product Ratios, Local Bus Lines, 1922-1950	71
22. Capital-Product Ratios, All Other Utilities and Transportation, 1890-1950	72
23. Indexes of the Cost of Plant and Equipment of the Regulated Industries and the Wholesale Prices of All Commodities, 1870-1950	144
24. Gross Capital Formation, All Regulated Industries, 1874-1946	145
25. Gross and Net Capital Formation, All Regulated Industries, Current Dollars, 1874-1946	146
26. Value of Plant and Equipment, All Regulated Industries, Current Dollars, 1874-1947	148

## APPENDIX CHARTS

A-1. Comparison of Gross Capital Formation in Constant Dollars, Steam Railroads, 1912-1928, Reported and Interpolated	205
A-2. Comparison of Gross Capital Formation in Current Dollars, Electric Light and Power, 1921-1932, Reported and Estimated	209
A-3. Gross Capital Formation in Current Dollars, Telephones, 1913-1936, Reported and Estimated	211
A-4. Comparison of Price Indexes, Experimental and Final Series, 1916-1934, Nine-Year Moving Averages	212
A-5. Comparison of Capital Consumption, Steam Railroads, 1870-1950, Final and Experimental Series	215
A-6. Net Capital Formation in Constant Dollars, and Changes in Track and Equipment, Steam Railroads, Nine-Year Moving Averages, 1874-1946	216

CAPITAL IN TRANSPORTATION,  
COMMUNICATIONS, AND PUBLIC UTILITIES:  
ITS FORMATION AND FINANCING

