

This PDF is a selection from an out-of-print volume from the National Bureau of Economic Research

Volume Title: A Disequilibrium Model of Demand for Factors of Production

Volume Author/Editor: M. Ishaq Nadiri and Sherwin Rosen

Volume Publisher:

Volume ISBN: 0-87014-261-5

Volume URL: <http://www.nber.org/books/nadi73-1>

Publication Date: 1973

Chapter Title: Introductory pages, including Preface, to "A Disequilibrium Model of Demand for Factors of Production"

Chapter Author: M. Ishaq Nadiri, Sherwin Rosen

Chapter URL: <http://www.nber.org/chapters/c1246>

Chapter pages in book: (p. -25 - -9)

A Disequilibrium Model of Demand
for Factors of Production

M. ISHAQ NADIRI

National Bureau of Economic Research and
New York University

AND

SHERWIN ROSEN

National Bureau of Economic Research and
University of Rochester



National Bureau of Economic Research

NEW YORK

1973

Distributed by Columbia University Press

NEW YORK AND LONDON

Copyright © 1974 by National Bureau of Economic Research
All rights reserved

Library of Congress card number: 73-81541

ISBN: 0-87014-261-5

Printed in the United States of America

15972

A Disequilibrium Model of Demand
for Factors of Production

NATIONAL BUREAU OF ECONOMIC RESEARCH
NUMBER 99
GENERAL SERIES

NATIONAL BUREAU OF ECONOMIC RESEARCH

OFFICERS

Arthur F. Burns, *Honorary Chairman*
Walter W. Heller, *Chairman*
J. Wilson Newman, *Vice Chairman*
John R. Meyer, *President*
Thomas D. Flynn, *Treasurer*
Douglas H. Eldridge, *Vice President-Executive Secretary*

Victor R. Fuchs, *Vice President-Research; Co-director, NBER-West*
Edwin Kuh, *Director, Computer Research Center*
Hal B. Lary, *Vice President-Research*
Robert E. Lipsey, *Vice President-Research*
Sherman J. Maisel, *Co-director, NBER-West*
Geoffrey H. Moore, *Vice President-Research*
Edward K. Smith, *Vice President*

DIRECTORS AT LARGE

Atherton Bean, *International Multifoods Corporation*
Joseph A. Beirne, *Communications Workers of America*
Arthur F. Burns, *Board of Governors of the Federal Reserve System*
Wallace J. Campbell, *Foundation for Cooperative Housing*
Erwin D. Canham, *Christian Science Monitor*
Emilio G. Collado, *Exxon Corporation*
Solomon Fabricant, *New York University*
Eugene P. Foley, *Montrou Securities, Inc.*
Eli Goldston, *Eastern Gas and Fuel Associates*
David L. Grove, *International Business Machines Corporation*
Walter W. Heller, *University of Minnesota*
Vivian W. Henderson, *Clark College*

John R. Meyer, *Harvard University*
J. Irwin Miller, *Cummins Engine Company, Inc.*
Geoffrey H. Moore, *National Bureau of Economic Research*
J. Wilson Newman, *Dun & Bradstreet, Inc.*
James J. O'Leary, *United States Trust Company of New York*
Alice M. Rivlin, *Brookings Institution*
Robert V. Roosa, *Brown Brothers Harriman & Co.*
Boris Shishkin, *Washington, D.C.*
Arnold M. Soloway, *Jamaicaway Tower, Boston, Massachusetts*
Lazare Teper, *International Ladies' Garment Workers' Union*
Donald B. Woodward, *Riverside, Connecticut*
Theodore O. Yntema, *Oakland University*

DIRECTORS BY UNIVERSITY APPOINTMENT

Moses Abramovitz, *Stanford*
Gardner Ackley, *Michigan*
Charles H. Berry, *Princeton*
Francis M. Boddy, *Minnesota*
Otto Eckstein, *Harvard*
Walter D. Fisher, *Northwestern*
R. A. Gordon, *California*
Robert J. Lampman, *Wisconsin*

Maurice W. Lee, *North Carolina*
Almarin Phillips, *Pennsylvania*
Lloyd G. Reynolds, *Yale*
Robert M. Solow, *Massachusetts Institute of Technology*
Henri Theil, *Chicago*
William S. Vickrey, *Columbia*
Thomas A. Wilson, *Toronto*

DIRECTORS BY APPOINTMENT OF OTHER ORGANIZATIONS

Eugene A. Birnbaum, *American Management Association*
Thomas D. Flynn, *American Institute of Certified Public Accountants*
Nathaniel Goldfinger, *American Federation of Labor and Congress of Industrial Organizations*
Harold G. Halcrow, *American Agricultural Economics Association*
Walter E. Hoadley, *American Finance Association*

Philip M. Klutznick, *Committee for Economic Development*
Roy E. Moor, *National Association of Business Economists*
Douglass C. North, *Economic History Association*
Willard L. Thorp, *American Economic Association*
W. Allen Wallis, *American Statistical Association*
Robert M. Will, *Canadian Economics Association*

DIRECTORS EMERITI

Percival F. Brundage
Frank W. Fetter
Gottfried Haberler

Albert J. Hettinger, Jr.
George B. Roberts

Murray Shields
Joseph H. Willits

SENIOR RESEARCH STAFF

Gary S. Becker
Charlotte Boschan
Phillip Cagan
Stanley Diller
Solomon Fabricant
Milton Friedman
Victor R. Fuchs
J. Royce Ginn
Raymond W. Goldsmith

Michael Gort
Michael Grossman
F. Thomas Juster
John F. Kain
John W. Kendrick
Irving B. Kravis
Edwin Kuh
William M. Landes
Hal B. Lary

Robert E. Lipsey
Sherman J. Maisel
Benoit B. Mandelbrot
John R. Meyer
Robert T. Michael
Jacob Mincer
Ilse Mintz
Geoffrey H. Moore
M. Ishaq Nadiri

Nancy Ruggles
Richard Ruggles
Anna J. Schwartz
Robert P. Shay
Edward K. Smith
George J. Stigler
Victor Zarnowitz

RELATION OF THE DIRECTORS
TO THE WORK AND PUBLICATIONS
OF THE NATIONAL BUREAU OF ECONOMIC RESEARCH

1. The object of the National Bureau of Economic Research is to ascertain and to present to the public important economic facts and their interpretation in a scientific and impartial manner. The Board of Directors is charged with the responsibility of ensuring that the work of the National Bureau is carried on in strict conformity with this object.

2. The President of the National Bureau shall submit to the Board of Directors, or to its Executive Committee, for their formal adoption all specific proposals for research to be instituted.

3. No research report shall be published until the President shall have submitted to each member of the Board the manuscript proposed for publication, and such information as will, in his opinion and in the opinion of the author, serve to determine the suitability of the report for publication in accordance with the principles of the National Bureau. Each manuscript shall contain a summary drawing attention to the nature and treatment of the problem studied, the character of the data and their utilization in the report, and the main conclusions reached.

4. For each manuscript so submitted, a special committee of the Directors (including Directors Emeriti) shall be appointed by majority agreement of the President and Vice Presidents (or by the Executive Committee in case of inability to decide on the part of the President and Vice Presidents), consisting of three Directors selected as nearly as may be one from each general division of the Board. The names of the special manuscript committee shall be stated to each Director when the manuscript is submitted to him. It shall be the duty of each member of the special manuscript committee to read the manuscript. If each member of the manuscript committee signifies his approval within thirty days of the transmittal of the manuscript, the report may be published. If at the end of that period any member of the manuscript committee withholds his approval, the President shall then notify each member of the Board, requesting approval or disapproval of publication, and thirty days additional shall be granted for this purpose. The manuscript shall then not be published unless at least a majority of the entire Board who shall have voted on the proposal within the time fixed for the receipt of votes shall have approved.

5. No manuscript may be published, though approved by each member of the special manuscript committee, until forty-five days have elapsed from the transmittal of the report in manuscript form. The interval is allowed for the receipt of any memorandum of dissent or reservation, together with a brief statement of his reasons, that any member may wish to express; and such memorandum of dissent or reservation shall be published with the manuscript if he so desires. Publication does not, however, imply that each member of the Board has read the manuscript, or that either members of the Board in general or the special committee have passed on its validity in every detail.

6. Publications of the National Bureau issued for informational purposes concerning the work of the Bureau and its staff, or issued to inform the public of activities of Bureau staff, and volumes issued as a result of various conferences involving the National Bureau shall contain a specific disclaimer noting that such publication has not passed through the normal review procedures required in this resolution. The Executive Committee of the Board is charged with review of all such publications from time to time to ensure that they do not take on the character of formal research reports of the National Bureau, requiring formal Board approval.

7. Unless otherwise determined by the Board or exempted by the terms of paragraph 6, a copy of this resolution shall be printed in each National Bureau publication.

*(Resolution adopted October 25, 1926 and revised February 6, 1933,
February 24, 1941, April 20, 1968, and September 17, 1973)*

Contents

Preface	xv
Introduction	xix
<i>1. Nature of the Problem and Relation to the Literature</i>	1
A. General Considerations	1
B. Time-Series Employment Models	2
C. Investment Models	6
i. Output and Interest Elasticities	6
ii. The Neoclassical Model of Investment	7
D. An Example	10
<i>2. The Structure of the Model</i>	13
A. Input Demand Functions	13
i. Specification of Input Prices	16
ii. The Long-Run Demand Functions	19
B. Short-Run Adjustments	24
i. Costs of Adjustment: Theoretical Considerations	25
ii. Some Qualifications	27
iii. Characterization of Disturbances	29
C. Restrictions on Adjustment Coefficients	32
D. Dynamic Properties of the System	34
E. Comparison with Other Models: Theoretical Considerations	36
<i>3. Characteristics of the Data</i>	40
A. Construction of the Variables	40
i. Labor Variables	42
ii. Capital Stock	42
iii. Rental Prices	42
iv. Inventories	42
v. Utilization Rates	42
B. Properties of the Data	43
<i>4. Estimation of the Model: Total Manufacturing</i>	55
A. Problems of Estimation	56
B. Structural Estimates	58

C. The Goodness of Fit and Forecasting Performance	68
D. Response Characteristics of the Model	73
i. Computational Methods	73
ii. Stability	78
E. Long-Run Response	78
5. <i>Experimentations in Specification</i>	81
A. Sensitivity of Structural Estimates to Specification	81
B. Analysis of Residuals: Cross Correlation	91
C. Reduced Form Estimation	94
6. <i>Disaggregated Results</i>	101
A. Structural Estimates	101
i. Overview	101
ii. Short-Run Elasticities	132
iii. Own Adjustments	134
iv. Cross Adjustments	136
B. Dynamic Properties	139
i. Distributed Lags	139
ii. Long-Run Elasticities	154
C. Summary	159
7. <i>Further Observations, Summary, and Conclusions</i>	160
A. Interindustry Differences	160
B. Comparisons with the Literature: Empirical Results	162
C. Summary and Conclusions	167
Appendix A. Industrial Classification	175
Appendix B. Descriptive Statistics of Quarterly Time Series for Individual Industries and Industry Aggregates	177
Appendix C. Estimated Structure of the Model	184
Appendix D. Glossary of Important Symbols	189
Appendix E. References	191
Index	197

Tables

3.1	Description of Data: Seasonally Adjusted Quarterly Averages for Total Manufacturing	44
4.1	Estimated Structure of Model (4.1) for Total Manufacturing	59
4.2	Direction Effect of Exogenous Variables and Adjustment Coefficients	66
4.3	Forecast Performance Indexes for Model (4.1) for Total Manufacturing	69
4.4	Long-Run Elasticities for Total Manufacturing	79
5.1	Regression Results of Auxiliary Equations (5.1), (5.2), and (5.3) for Predicting the Level of Sales of Total Manufacturing	84
5.2	Matrix of Simple Correlation Among Current and Lagged Residuals of Equation (2.3)	92
5.3	Regression Results of Cross Correlation of Residuals of Model (4.1)	93
5.4	Lag Distribution from Time Domain Regressions of the Dependent Variables on Past and Current Values of Sales	96
5.5	Lag Distribution from Time Domain Regressions of the Dependent Variables on Past, Current, and Future Values of Sales	98
5.6	Lag Distribution from Time Domain Regressions of the Dependent Variables on Current and Future Values of Sales	99
<i>Estimated Structure of Model (4.1) for Individual Industries, 1954I-1967IV, and Industry Aggregates, 1948I-1967IV:</i>		
6.1	Total Durables	103
6.2	Primary Iron and Steel	104
6.3	Primary Nonferrous Metal	105
6.4	Electrical Machinery and Equipment	106
6.5	Machinery Except Electrical	107
6.6	Motor Vehicles and Equipment	108
6.7	Transportation Equipment Excluding Motor Vehicles	109
6.8	Stone, Clay, and Glass Products	110
6.9	Other Durables	111
6.10	Total Nondurables	112
6.11	Food and Beverages	113

Tables

Estimated Structure of Model (4.1) for Individual Industries, 1954I-1967IV, and Industry Aggregates, 1948I-1967IV (cont.):

6.12	Textile Mill Products	114
6.13	Paper and Allied Products	115
6.14	Chemical and Allied Products	116
6.15	Petroleum and Coal Products	117
6.16	Rubber Products	118
6.17	Other Nondurables	119
6.18	Own-Adjustment Coefficients of Dependent Variables in Individual Manufacturing Industries	135
6.19	Frequency of Statistically Significant Cross Effects of Model (4.1) for Individual Manufacturing Industries	138
6.20	Largest and Smallest Characteristic Roots of $(I - \beta)$ Matrix, by Industry	155
6.21	Long-Run Price Elasticities, by Industry	156
6.22	Long-Run Trend Elasticities, by Industry	157
6.23	Long-Run Sales Elasticities, by Industry	158
7.1	"Short-Run" Scale Effects, Production Worker Employment, and Hours of Work in Total Manufacturing, Full Model	165

Descriptive Statistics of Quarterly Time-Series Data, 1953I-1967IV:

B.1	Total Durables, Primary Iron and Steel, and Primary Nonferrous Metal	178
B.2	Electrical Machinery and Equipment, Machinery Except Electrical, and Motor Vehicles and Equipment	179
B.3	Transportation Equipment Excluding Motor Vehicles; Stone, Clay, and Glass; and Other Durables	180
B.4	Total Nondurables, Food and Beverages, and Textile Mill Products	181
B.5	Paper and Allied Products, Chemical and Allied Products, and Petroleum and Coal Products	182
B.6	Rubber Products and Other Nondurables	183
C.1	Predictive and Structural Tests of Model (4.1), Total Manufacturing, 1948I-1967IV and 1968I-1970II	184

Estimated Structure of Model (4.1), Total Manufacturing Sector:

C.2	With Forecasted Sales Variable	185
C.3	Without Utilization Rate	186
C.4	With Forward Values of Sales and Wages	187
C.5	With Forward Values of Sales	188

Charts

Quarterly Data, 1947I-1970II:

3.1	Stock of Production Workers (Y_1)	46
3.2	Hours of Work per Week of Production Workers (Y_2)	47
3.3	Deflated Capital Stock (Y_3)	48
3.4	Utilization Rate (Y_4)	49
3.5	Manufacturers' Total Inventories in Constant Dollars (Y_5)	50
3.6	Stock of Nonproduction Workers (Y_6)	50
3.7	Deflated Shipments (S)	51
3.8	Hourly Earnings per Week of Production Workers (w)	51
3.9	User Cost of Capital (c)	52
3.10	Relative Prices (w/c)	52
3.11	Manufacturers' New Orders in Constant Dollars (N)	53
3.12	Manufacturers' Unfilled Orders in Constant Dollars (ou)	53
3.13	Ratio of Manufacturers' Unfilled Orders to Shipments (ou/S)	54

Quarterly Data, 1948I-1967IV:

4.1	Actual and Estimated Values of the Stock of Production Workers	60
4.2	Actual and Estimated Values of Hours of Work of Production Workers	61
4.3	Actual and Estimated Values of Deflated Capital Stock	62
4.4	Actual and Estimated Values of the Utilization Rate	63
4.5	Actual and Estimated Values of Manufacturers' Total Inventories in Constant Dollars	64
4.6	Actual and Estimated Values of the Stock of Nonproduction Workers	65

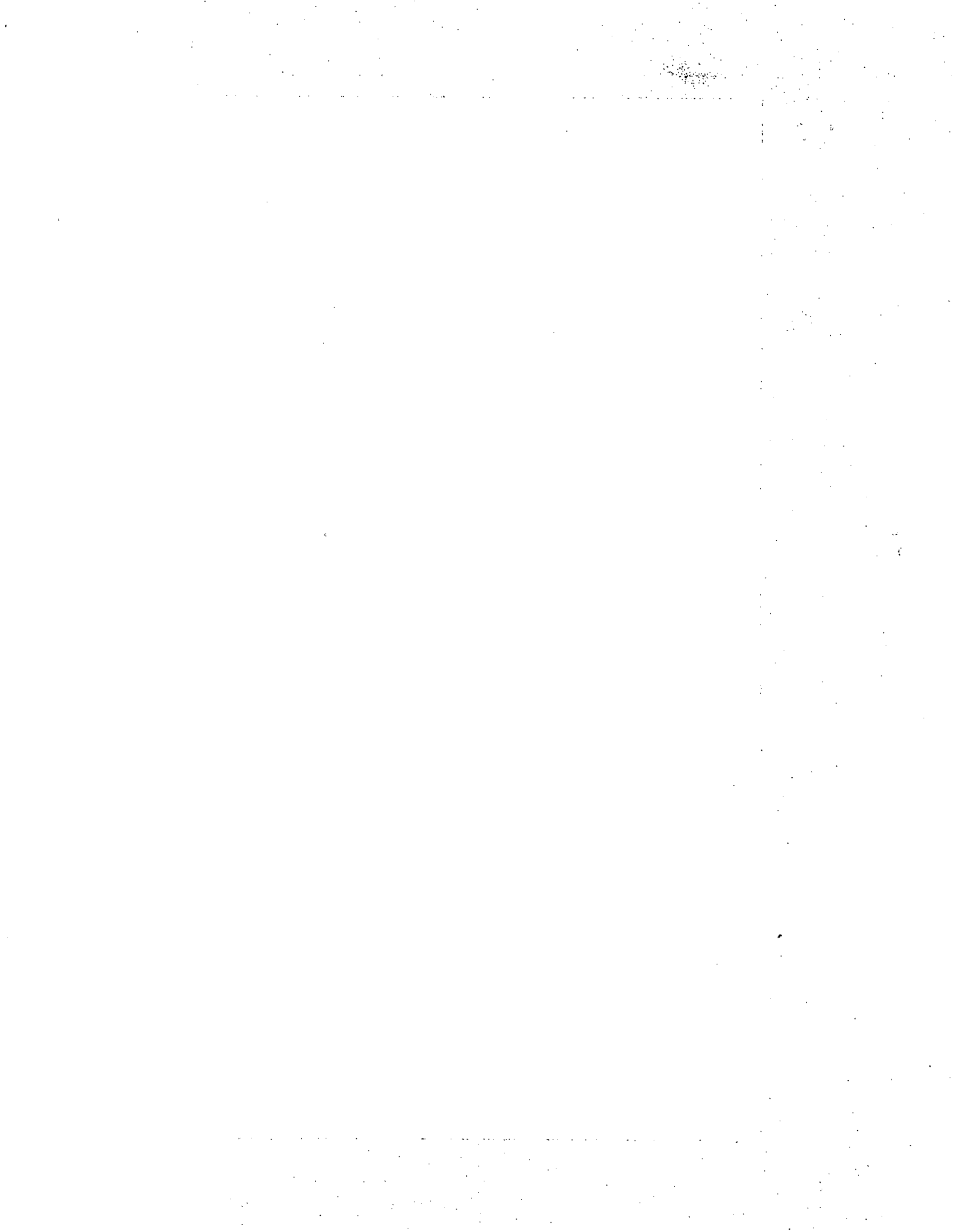
Quarterly Data for Total Manufacturing, 1968I-1970II:

4.7	Actual and Forecast Values of the Stock of Production Workers, Weekly Hours, and Capital	71
-----	--	----

	<i>Quarterly Data for Total Manufacturing, 1968I-1970II (cont.):</i>	
4.8	Actual and Forecast Values of the Utilization Rate, Total Inventories, and the Stock of Nonproduction Workers	72
	<i>Total Durables, Quarterly Data, 1948I-1967IV:</i>	
6.1	Actual and Estimated Values of the Stock of Production Workers	120
6.2	Actual and Estimated Values of Hours of Work of Production Workers	121
6.3	Actual and Estimated Values of Capital Stock	122
6.4	Actual and Estimated Values of the Utilization Rate	123
6.5	Actual and Estimated Values of Total Inventories	124
6.6	Actual and Estimated Values of the Stock of Nonproduction Workers	125
	<i>Total Nondurables, Quarterly Data, 1948I-1967IV:</i>	
6.7	Actual and Estimated Values of the Stock of Production Workers	126
6.8	Actual and Estimated Values of Hours of Work of Production Workers	127
6.9	Actual and Estimated Values of Capital Stock	128
6.10	Actual and Estimated Values of the Utilization Rate	129
6.11	Actual and Estimated Values of Total Inventories	130
6.12	Actual and Estimated Values of the Stock of Nonproduction Workers	131

Figures

1.1	Untitled	11
4.1	Implied Distributed Lag Responses to a Unit Sales Impulse, Based on Model (4.1)	76
5.1	Implied Distributed Lag Responses to a Unit Output Impulse, Based on 1969 Model	82
	<i>Implied Distributed Lag Responses to a Unit Sales Impulse:</i>	
5.2	Based on Model (5.1)	86
5.3	Based on Estimates Untransformed for Serial Correlation	87
5.4	Based on Model (4.1), Omitting the General Utilization Rate	88
5.5	Based on Actual Current and Future Sales	89
	<i>Distributed Lag Responses to a Unit Sales Impulse:</i>	
6.1	Durable Goods	140
6.2	Nondurable Goods	141
6.3	Primary Iron and Steel	143
6.4	Primary Nonferrous Metal	144
6.5	Electrical Machinery and Equipment	145
6.6	Machinery Except Electrical	146
6.7	Motor Vehicles and Equipment	147
6.8	Stone, Clay, and Glass Products	148
6.9	Other Durables	149
6.10	Textile Mill Products	150
6.11	Paper and Allied Products	151
6.12	Petroleum and Coal Products	152
6.13	Other Nondurables	153



PREFACE

THE behavior of capital investment and employment patterns in time-series data has been an active area of research in economics for many years, undoubtedly because of the importance of these phenomena for understanding and controlling business cycles. Research in the area has intensified in the past decade, with the emergence of better data and the realization that investment and employment variations may be best understood in terms of a modification of the theory of the firm. The modification largely consists of explicit recognition that there are costs associated with changes in the stocks of inputs as well as with changes in the intensity of their use. Under these circumstances, rational decision-making requires taking into account the effect of current decisions on future events, for there are strong incentives to minimize costs of change through production smoothing, reducing the period-to-period variance of input stocks by spreading out such changes over an extended horizon. By providing a link between present and future, this approach introduces a dynamic element into the theory of the firm that the static constructs of short- and long-run cost functions lack. It focuses attention away from the question of which inputs are to be regarded as fixed or variable over the period spanned by the data, and toward the role of inventories of both output and inputs and of utilization rates, and the dynamic linkages between input changes during the adjustment process. We hope to have provided new evidence on these important and interesting relationships in this study.

A great deal of research under the auspices of the National Bureau has pointed toward the development of dynamic models of the variety illustrated in this monograph. In particular, mention must be made of

Wesley Mitchell's¹ view of the behavior of costs in the generation of business cycles and empirical work by Thor Hultgren² in documenting that behavior for the case of labor costs. Further work by Hultgren³ and also by Solomon Fabricant⁴ traced systematic patterns of productivity over the course of business cycles and raised questions difficult to resolve on the basis of the customary distinctions between the short run and the long run. Finally, Gerhard Bry's⁵ investigation of variations in the length of the work week naturally lead toward input inventory and capacity considerations in the theory of demand for factors of production. Though sometimes only implicitly, elements of all these works are to be found in our model, and our research certainly could not have proceeded as it did without them.

Our collaboration began in 1967-68, when we both held research fellowships at the National Bureau and decided to pool our efforts. From the beginning, many persons contributed to the completion of this volume, and we are greatly indebted to all of them. Geoffrey Moore, then director of research, and Victor Fuchs, then in charge of the fellowship program, gave much encouragement to our initial plans. At a later stage John Meyer made a number of important suggestions regarding model design. George Borts, Solomon Fabricant, Robert Lucas, Marc Nerlove, Arthur Treadway, and Neil Wallace offered many useful suggestions and criticism of the work at various times. A staff reading committee consisting of Robert Eisner, Franklin Fisher, and Christopher Sims provided a volume of constructive criticism that materially improved the manuscript. Robert Lipsey was also very helpful in this connection. We are also thankful for the valuable comments of the Board of Directors' reading committee: Otto Eckstein, Nathaniel Goldfinger, and Robert M. Solow. Our thanks also are due to Emilio G. Collado for his observations on the manuscript.

This study benefited greatly from highly competent assistance. Most of

1. Wesley C. Mitchell, *Business Cycles: The Problem and Its Setting*, New York, NBER, 1927.

2. Thor Hultgren, *Changes in Labor Cost During Cycles in Production and Business*, Occasional Paper 74, New York, NBER, 1960.

3. Thor Hultgren, *Cost, Prices, and Profits: Their Cyclical Relations*, New York, NBER, 1965.

4. Solomon Fabricant, *Basic Facts on Productivity Change*, Occasional Paper 63, New York, NBER, 1959.

5. Gerhard Bry, *The Average Workweek as an Economic Indicator*, Occasional Paper 69, New York, NBER, 1959.

the data processing and computations were supervised admirably by Veena Bhatia, Morris Harf, and Susan Johnson. They were assisted at one time or another by Margaret Crump, Jennifer Michaels, and Selma Seligsohn. Rose Ferro provided very efficient and conscientious typing and secretarial assistance. We are very grateful to Ester Moskowitz for editing the manuscript. H. Irving Forman's expert draftsmanship contributed immeasurably to the presentation of the material in this book.

Financing for the study was provided partly from grants to the National Bureau by the Alfred P. Sloan Foundation and the Alex C. Walker Educational and Charitable Foundation for the Bureau's studies on productivity, employment, and price levels, and partly from the general funds of the National Bureau.